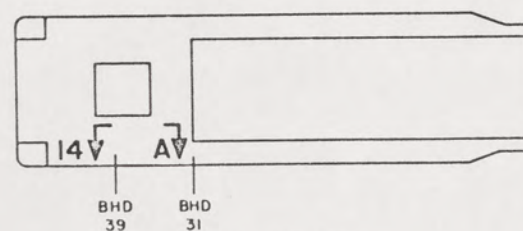


NOTES:

- THIS DRAWING HAS BEEN DEVELOPED FROM SHIPCHECK INFORMATION FOR ACCOMPLISHING THE INSTALLATION OF MODIFICATIONS TO THE BATTERY BOX FOUNDATION ON LCM-8, MOD-1.
- ALL FABRICATION WELDING AND INSPECTION TO BE IN ACCORDANCE WITH NAVSEA 0920-LP-014-5010, WELD SIZES BASED ON USE OF AWS A5.1, CLASS E7018 ELECTRODES FOR LC STEEL TO LC STEEL.
- EQUIPMENT AND WORKMANSHIP SHALL BE IN ACCORDANCE WITH USCG AND ABS REGULATIONS.
- REPAIR ALL PAINT DAMAGED BY THIS INSTALLATION AND PAINT ALL NEW STEEL IN ACCORDANCE WITH U.S. ARMY TECHNICAL BULLETIN TB43-0144.
- MATERIAL ORDERED ON THIS DRAWING IS NOT INTENDED TO BE RESTRICTIVE. SUBSTITUTION OF EQUAL QUALITY MATERIAL MAY BE MADE EXCEPT ITEMS MARKED GFE.
- SLIGHT DEVIATIONS FROM DIMENSIONS SHOWN ARE PERMISSIBLE TO SUIT ACTUAL CONDITIONS FOUND ABOARD THE VESSEL.
- COMPONENTS SHOWN BY SOLID, HEAVY LINES ARE NEW AND ARE TO BE INSTALLED IN ACCORDANCE WITH THIS DRAWING. PHANTOM LINES INDICATE EXISTING COMPONENTS INSTALLED BY DRAWINGS REFERENCED AS NOTED.
- BATTERY BOX AND COVER SHALL BE MADE FROM 3/8" PLYWOOD, REF. VIEW 12-C, SHEET 2. BOX SHALL BE FIBERGLASS SPRAYED AND GELCOAT PAINTED (GREY) INSIDE AND OUTSIDE. EACH BATTERY (2) SHALL BE SUPPORTED WITH HEOPRENE RUBBER SHEET, 3/4" THICK ON BOTTOM SURFACE. BATTERY BOX MAY BE PURCHASED FROM "CHAMBERS INDUSTRIAL SUPPLY, INC. 5608 SALMEN (ELMWOOD INDUSTRIAL PARK), HARAHAN, LA, 70123-2245".

REFERENCE DRAWINGS APPLICABLE TO HULL NUMBERS 8540 THRU 8560 AND 8580 THRU 8618		
NO.	DRAWING NO.	TITLE
1	13226E9464	LCM-8, MOD-1 MISC STRUCTURAL DETAILS
2	145-4510914	LCM-8, MOD-1 HULL PLATING SIDE/INBOARD LONGITUDINAL BULKHEAD

REFERENCE DRAWINGS APPLICABLE TO HULL NUMBERS 8520 THRU 8539		
NO.	DRAWING NO.	TITLE
1	13226E9464	LCM-8, MOD-1 MISC STRUCTURAL DETAILS
2	145-2534200	LCM-8, MOD-1 HULL PLATING SIDE/INBOARD LONGITUDINAL BULKHEAD



KEY VIEW

VIEW 5-A
SCALE NONE

THIS DRAWING APPLIES
TO HULL NUMBERS
8520 THROUGH 8560 AND
8580 THROUGH 8618 ONLY

GFE	YARD	QTY	DESCRIPTION	UNIT	COML	MATERIAL		
		1	BATTERY BOX W/COVER (SEE NOTE B)		COML	VARIOUS		
	10	2	ANGLE, 2" X 2" X 1/4" STK		ASTM A36	STEEL		
	9	2	FLAT BAR, 1/4" X 1 1/2" X 1 3/4" L		ASTM A36	STEEL		
	8	2	RD BAR, 3/8" DIA X 14" L		ASTM A36	STEEL		
	7	1	FLAT BAR, 1/4" X 1 1/2" X 20" L		ASTM A36	STEEL		
	6	2	NUT, PLAIN, WING, 3/8-16 UNC-2B			STEEL		
	5	4	ANGLE, 2" X 2" X 1/4" STK		ASTM A36	STEEL		
	4	1	ANGLE, 3" X 2" X 1/4" STK		ASTM A36	STEEL		
	3	1	ANGLE, 3" X 2" X 1/4" STK		ASTM A36	STEEL		
	2	1	FLAT BAR, 1/4" X 4"		ASTM A36	STEEL		
	1	2	ANGLE, 3" X 2" X 1/4" STK		ASTM A36	STEEL		
SUPPLIER	ITEM NO.	PSCM	DWG SIZE	PART OR IDENTIFYING NO.	QTY REQD	NOMENCLATURE OR DESCRIPTION	SPECIFICATION	MATERIAL

UNLESS OTHERWISE SPECIFIED DIM/TOLERANCES ARE:
FRACTIONS 1/8
ONE PLACE () 1/16
TWO PLACE () 1/32
THREE PLACE () 1/64
DECIMALS 1/16

DO NOT SCALE THIS DRAWING
FOR INTERPRETATION OF DRAWING DIMENSIONS THIS APPLIES
REMOVE EDGES AND BREAK SHARP EDGES
SHARP EDGES - 10
FILLET EDGES - 10
MATERIAL

DRAWN BY: KL
CHECKED BY: C.T. Pado
DATE: 15 MAR 85
CONTRACT NO.

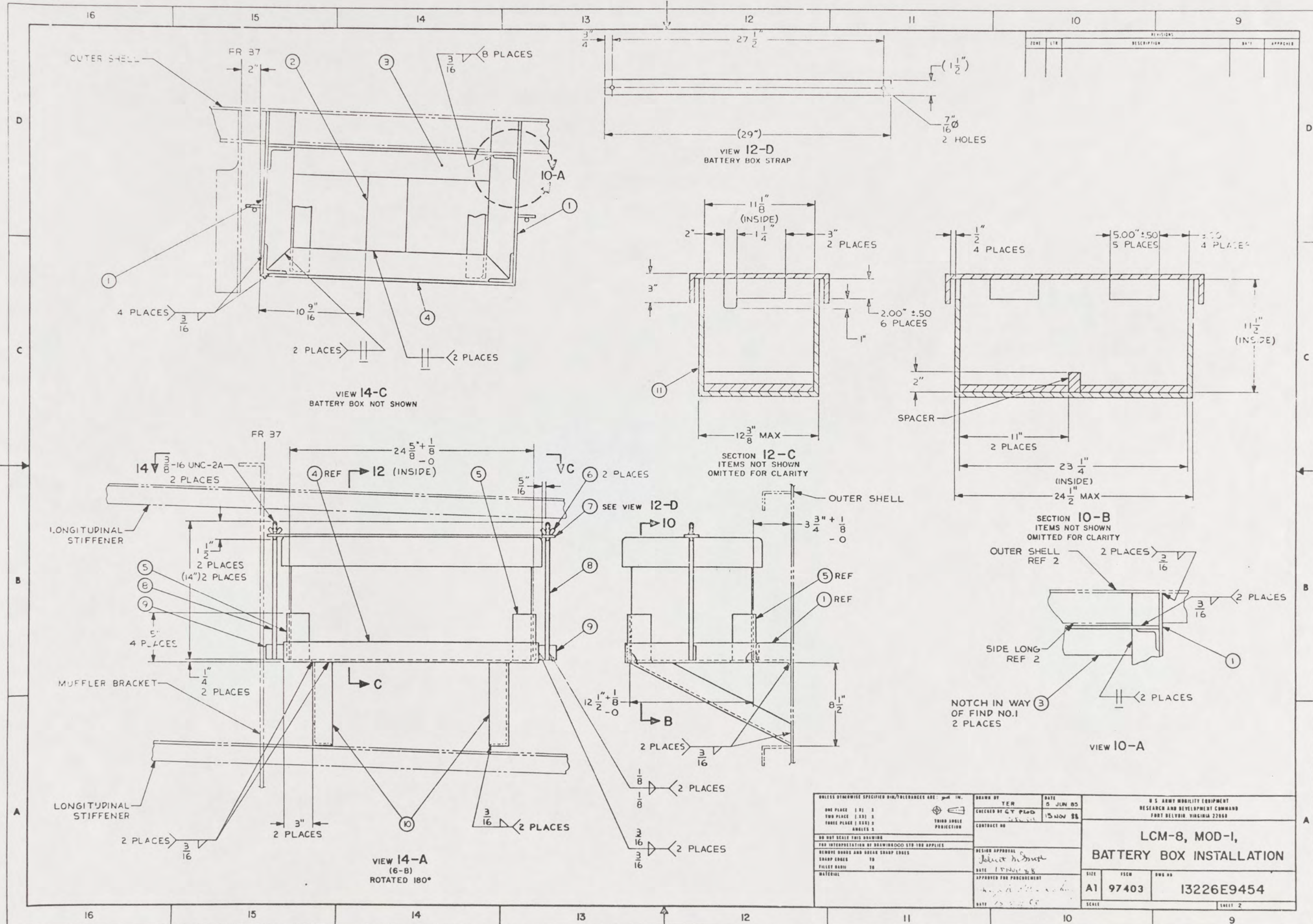
DESIGN APPROVAL:
Jolice h. Drott
DATE: 15 MAR 85
APPROVED FOR PROCUREMENT:
DATE: 15 MAR 85

U.S. ARMY MOBILITY EQUIPMENT
RESEARCH AND DEVELOPMENT COMMAND
FORT BELLEVILLE, ILLINOIS 62208

LCM-8, MOD-1,
BATTERY BOX INSTALLATION

SIZE: A1
PSCM: 97403
DWG NO: 13226E9454
SCALE: NONE
SHEET 1 OF 2

19



REVISIONS			
NO.	DATE	DESCRIPTION	BY

UNLESS OTHERWISE SPECIFIED DIM/TOLERANCES ARE: $\frac{1}{16}$ IN. MIN.		DRAWN BY: TER		DATE: 5 JUN 55		U.S. ARMY MOBILITY EQUIPMENT RESEARCH AND DEVELOPMENT COMMAND, FORT BELVOIR, VIRGINIA 22060	
ONE PLACE (1) 0.1	TWO PLACE (2) 0.05	THREE PLACE (3) 0.01	FOUR PLACE (4) 0.005	CHECKED BY: CY PLD	DATE: 15 NOV 55	LCM-8, MOD-1, BATTERY BOX INSTALLATION	
THIRD ANGLE PREDICTION				CONTRACT NO.			
DO NOT SCALE THIS DRAWING				DESIGN APPROVAL: <i>John H. Smith</i>		SIZE: A1 PSCN: 97403 DWA NO: 13226E9454	
FOR INTERPRETATION OF DRAWING GO TO 100 APPLIES				DATE: 15 NOV 55			
REMOVE BURRS AND BREAK SHARP EDGES TO FILLET BURRS TO MATERIAL				APPROVED FOR PROCUREMENT: <i>John H. Smith</i>		SCALE: SHEET 2	

20