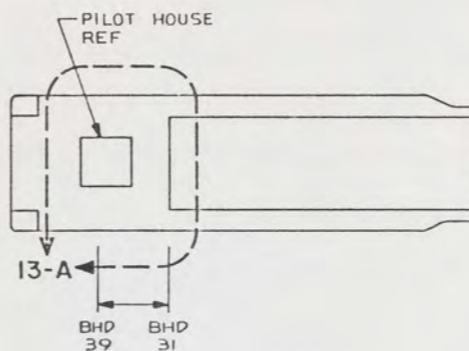


NOTES

1. TEMPLATE FLOORPLATES AND FLOOR SUPPORT PATTERN TO SUIT ARRANGEMENT OF MACHINERY, EQUIPMENT AND FOUNDATIONS.
2. EQUIPMENT AND WORKMANSHIP SHALL BE IN ACCORDANCE WITH USCG AND ABS REGULATIONS.
3. REPAIR ALL PAINT DAMAGED BY THIS INSTALLATION AND PAINT ALL NEW STEEL IN ACCORDANCE WITH U.S. ARMY TECHNICAL BULLETIN "843-0144".
4. SLIGHT DEVIATIONS FROM DIMENSIONS SHOWN ARE PERMISSIBLE TO SUIT ACTUAL CONDITIONS FOUND ABOARD THE VESSEL.
5. NON-DIMENSIONED CUTOUTS APPEAR IN GENERAL AREA OF PIPES, TUBING AND EQUIPMENT. LOCATE CUTOUTS TO SUIT ACTUAL CONDITIONS FOUND ABOARD THE VESSEL.
6. ALUMINUM WELDING TO BE IN ACCORDANCE WITH MIL-STD-27B.
7. STEEL FABRICATION WELDING AND INSPECTION TO BE IN ACCORDANCE WITH NAVSEA 9500-LP-014-5010. WELD SIZES BASED ON USE OF AWS A5.1, CLASS E7018 ELECTRODES FOR LC STEEL TO LC STEEL.
8. COMPONENTS SHOWN BY SOLID, HEAVY LINES ARE NEW, ORDERED AND INSTALLED IN ACCORDANCE WITH THIS DRAWING. LIGHT, BROKEN OR PHANTOM LINES INDICATE COMPONENTS EXISTING OR ORDERED ON AND INSTALLED BY DRAWINGS REFERENCED AS NOTED.
9. FLOOR PLATING SHALL BE RAISED TO CLEAR PROPULSION SHAFTING PORT AND STARBOARD USING VIEW 13-A AS A GUIDE.
10. SPACE FLOOR PLATE SCREWS, FIND NO. 57, APPROXIMATELY 10.00 APART.

REFERENCE DRAWINGS APPLICABLE TO HULL NUMBERS 8540 THRU 8560 AND 8580 THRU 8618		
NO.	DRAWING NO.	TITLE
1	145-4510913	LONGITUDINAL TRUSSES
2	145-4510915	BOTTOM PLATING
3	145-4510918	FRAMING SECTIONS
4	13226E9448	LCM-8, MOD-1, ENGINE FOUNDATIONS
5	13226E9456	LCM-8, MOD-1, MODIFICATION BILGE PIPING SYSTEM
6	145-4510921	BULKHEADS AND TRANSOM DETAILS
7	145-4510934	BITTS, CHOCKS, LIFE LINES AND LADDERS

REFERENCE DRAWINGS APPLICABLE TO HULL NUMBERS 8520 THRU 8539		
NO.	DRAWING NO.	TITLE
1	145-2534193	LONGITUDINAL TRUSSES
2	145-2534201	BOTTOM PLATING
3	145-2534194	FRAMING SECTIONS
4	13226E9448	LCM-8, MOD-1, ENGINE FOUNDATIONS
5	13229E2253	LCM-8, MOD-1, BILGE SYSTEM PIPING ARRANG.
6	145-2534195	BULKHEADS AND TRANSOM DETAILS
7	145-2534246	BITTS, CHOCKS, LIFE LINES AND LADDERS



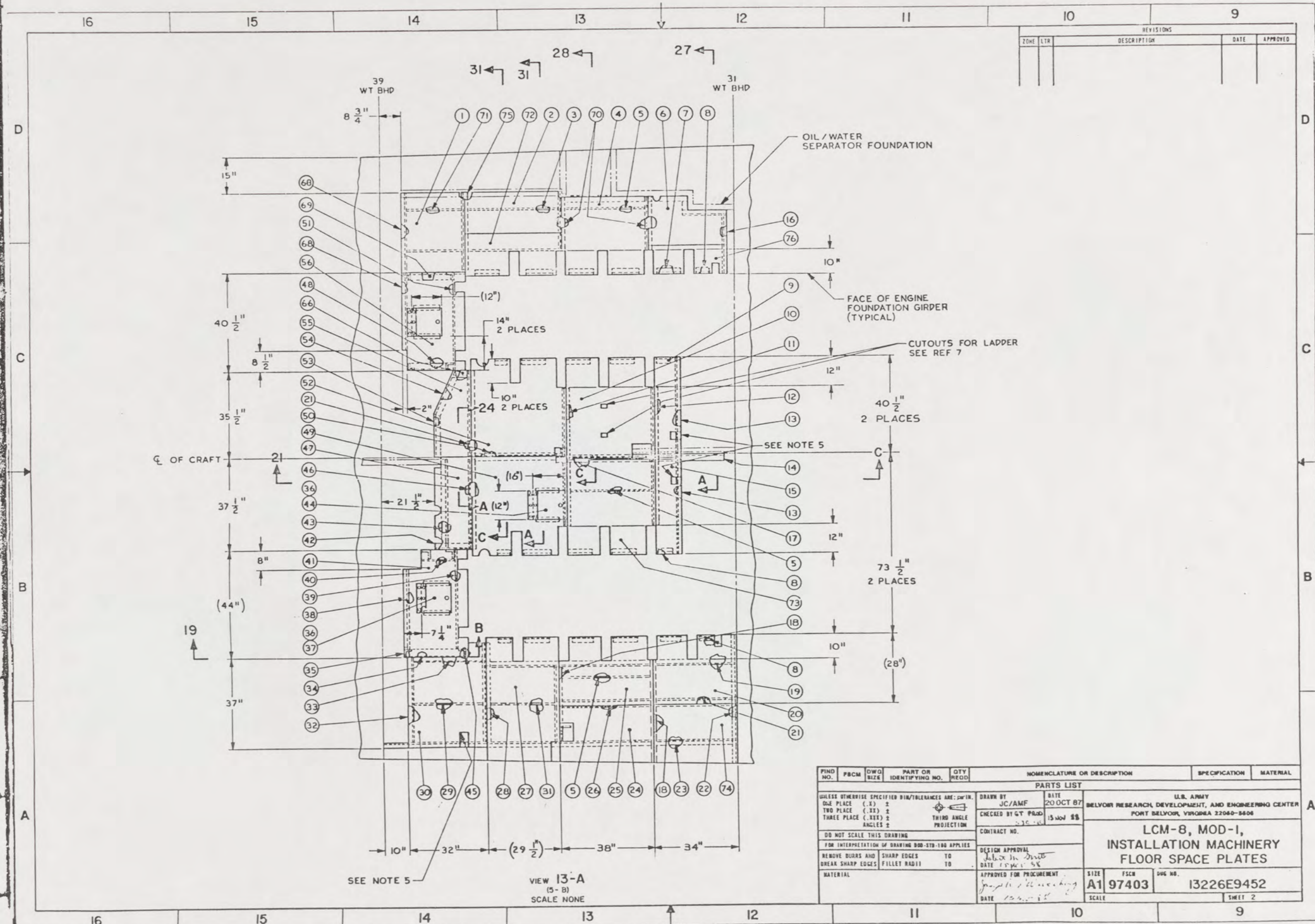
KEY PLAN 5-B
SCALE NONE

THIS DRAWING APPLIES
TO HULL NUMBERS
8520 THROUGH 8560 AND
8580 THROUGH 8618 ONLY

YARD	FIND NO.	FSCM	QTY REQD	PART OR IDENTIFYING NO.	SPECIFICATION	MATERIAL
77			1	ANGLE, 3/16 X 1 1/2 X 1 1/2 X 15 LG	ASTM A36	STEEL
76	6061-T6		1	FLOOR PLATE, DIAMOND TREAD, 3/16 X 12 X 32	ASTM B632	AL ALY
75			1	ANGLE, 1/4 X 2 1/2 X 2 1/2 X 22 LG	ASTM A36	STEEL
74	6061-T6		1	FLOOR PLATE, DIAMOND TREAD, 3/16 X 28 X 34 LG	ASTM B632	AL ALY
73	6061-T6		1	FLOOR PLATE, DIAMOND TREAD, 3/16 X 36 X 40 LG	ASTM B632	AL ALY
72	6061-T6		1	FLOOR PLATE, DIAMOND TREAD, 3/16 X 16 X 30 LG	ASTM B632	AL ALY
71	6061-T6		1	BAR, 1/4 X 2 X 23 LG	ASTM B221	AL ALY
70			2	ANGLE, 3/16 X 1 1/2 X 1 1/2 X 22 LG	ASTM A36	STEEL
69			1	ANGLE, 1/4 X 2 1/2 X 2 1/2 X 26 LG	ASTM A36	STEEL
68			2	ANGLE, 3/16 X 1 1/2 X 1 1/2 X 32 LG	ASTM A36	STEEL
67	6061-T6		6	BAR, 3/16 X 1 1/2 X 12	ASTM B221	AL ALY
66			1	ANGLE, 1/4 X 2 1/2 X 2 1/2 X 6 LG	ASTM A36	STEEL
65			1	ANGLE, 3/16 X 1 1/2 X 1 1/2 X 20 LG	ASTM A36	STEEL
64			2	ANGLE, 3/16 X 1 1/2 X 1 1/2 X 9 LG	ASTM A36	STEEL
63			2	ANGLE, 3/16 X 1 1/2 X 1 1/2 X 13 LG	ASTM A36	STEEL
62			2	ANGLE, 3/16 X 1 1/2 X 1 1/2 X 7 LG	ASTM A36	STEEL
61	MS35649-2254	18		NUT, HEX., 250-20 UNC-28		CRES
60	MS35338-139	18		WASHER, LOCK-SPRING, 1/4 NOM SIZE		CRES
59	MS35307-305	18		SCREW, CAP, HEX, NO., 250-20 UNC-2A X .63 LG		CRES
58			1	ANGLE, 3/16 X 1 1/2 X 1 1/2 X 12 LG	ASTM A36	STEEL
57	MS1957-79	AR		SCREW, MACH, PAN HD., 250-20 UNC-2A X .50 LG		CRES
56	6061-T6		1	FLOOR PLATE, DIAMOND TREAD, 3/16 X 26 X 40 1/2	ASTM B632	AL ALY
55	6061-T6		1	FLOOR PLATE, DIAMOND TREAD, 3/16 X 16 X 35 1/2	ASTM B632	AL ALY
54			1	ANGLE, 3/16 X 1 1/2 X 1 1/2 X 20 LG	ASTM A36	STEEL

YARD	FIND NO.	FSCM	QTY REQD	PART OR IDENTIFYING NO.	SPECIFICATION	MATERIAL
53			1	ANGLE, 3/16 X 1 1/2 X 1 1/2 X 18 LG	ASTM A36	STEEL
52	6061-T6		1	FLOOR PLATE, DIAMOND TREAD, 3/16 X 38 X 41	ASTM B632	AL ALY
51			1	BAR, 1/4 X 2 X 40 1/2 LG	ASTM A36	STEEL
50			1	ANGLE, 1/4 X 2 1/2 X 2 1/2 X 35 LG	ASTM A36	STEEL
49	6061-T6		1	FLOOR PLATE, DIAMOND TREAD, 3/16 X 38 X 35	ASTM B632	AL ALY
48			1	ANGLE, 1/4 X 2 1/2 X 2 1/2 X 24 LG	ASTM A36	STEEL
47	6061-T6		1	FLOOR PLATE, DIAMOND TREAD, 3/16 X 16 X 37 1/2	ASTM B632	AL ALY
46			1	ANGLE, 1/4 X 2 1/2 X 2 1/2 X 37 LG	ASTM A36	STEEL
45			4	ANGLE, 1/4 X 2 1/2 X 2 1/2 X AR L	ASTM A36	STEEL
44	6061-T6		1	FLOOR PLATE, DIAMOND TREAD, 3/16 X 12 X 16	ASTM B632	AL ALY
43			1	ANGLE, 1/4 X 2 1/2 X 2 1/2 X 36	ASTM A36	STEEL
42			1	ANGLE, 1/4 X 2 1/2 X 2 1/2 X 14 3/4 LG	ASTM A36	STEEL
41	6061-T6		1	FLOOR PLATE, DIAMOND TREAD, 3/16 X 26 X 44	ASTM B632	AL ALY
40			1	ANGLE, 1/4 X 2 1/2 X 2 1/2 X 14 LG	ASTM A36	STEEL
39	6061-T6		1	BAR, 1/4 X 2 X 41 1/2 LG	ASTM B221	AL ALY
38	6061-T6		1	BAR, 1/4 X 2 X 33 1/2 LG	ASTM B221	AL ALY
37	6061-T6		2	FLOOR PLATE, DIAMOND TREAD, 3/16 X 12 X 12	ASTM B632	AL ALY
36	MS35826-12C	3		HINGE, 2 1/2" OPEN X .060 X 12" LG		CRES
35			4	ANGLE, 1/4 X 2 1/2 X 2 1/2 X AR L	ASTM A36	STEEL
34			1	ANGLE, 1/4 X 2 1/2 X 2 1/2 X 26 LG	ASTM A36	STEEL
33			1	ANGLE, 1/4 X 2 1/2 X 2 1/2 X 29 1/2 LG	ASTM A36	STEEL
32			1	ANGLE, 3/16 X 1 1/2 X 1 1/2 X 35 1/2 LG	ASTM A36	STEEL
31	6061-T6		1	BAR, 1/4 X 2 X 26 LG	ASTM B221	AL ALY
30	6061-T6		1	FLOOR PLATE, DIAMOND TREAD, 3/16 X 32 X 42	ASTM B632	AL ALY
29	6061-T6		1	BAR, 1/4 X 2 X 29 1/2 LG	ASTM B221	AL ALY
28			1	ANGLE, 1/4 X 2 1/2 X 2 1/2 X NO LG	ASTM A36	STEEL
27	6061-T6		1	FLOOR PLATE, DIAMOND TREAD, 3/16 X 29 1/2 X 52	ASTM B632	AL ALY
26			1	ANGLE, 1/4 X 2 1/2 X 2 1/2 X 36 1/2 LG	ASTM A36	STEEL
25	6061-T6		1	FLOOR PLATE, DIAMOND TREAD, 3/16 X 28 X 38	ASTM B632	AL ALY
24	6061-T6		1	FLOOR PLATE, DIAMOND TREAD, 3/16 X 24 X 38	ASTM B632	AL ALY
23			1	ANGLE, 3/16 X 1 1/2 X 1 1/2 X 144 LG	ASTM A36	STEEL
22			1	ANGLE, 3/16 X 1 1/2 X 1 1/2 X 62 LG	ASTM A36	STEEL
21			2	ANGLE, 1/4 X 2 1/2 X 2 1/2 X 35" LG	ASTM A36	STEEL
20	6061-T6		1	FLOOR PLATE, DIAMOND TREAD, 3/16 X 28 X 34	ASTM B632	AL ALY
19			1	ANGLE, 3/16 X 1 1/2 X 1 1/2 X 102 LG	ASTM A36	STEEL
18			2	ANGLE, 1/4 X 2 1/2 X 2 1/2 X 31 LG	ASTM A36	STEEL
17			1	ANGLE, 1/4 X 2 1/2 X 2 1/2 X 38 LG	ASTM A36	STEEL
16			1	ANGLE, 3/16 X 1 1/2 X 1 1/2 X 24 LG	ASTM A36	STEEL
15	6061-T6		1	FLOOR PLATE, DIAMOND TREAD, 3/16 X 10 1/2 X NO 1/2	ASTM B632	AL ALY
14			1	ANGLE, 1/4 X 2 1/2 X 2 1/2 X 28 LG	ASTM A36	STEEL
13			2	ANGLE, 3/16 X 1 1/2 X 1 1/2 X 40 1/2 LG	ASTM A36	STEEL
12			1	ANGLE, 1/4 X 2 1/2 X 2 1/2 X 40 1/2 LG	ASTM A36	STEEL
11			2	ANGLE, 1/4 X 2 1/2 X 2 1/2 X 27 LG	ASTM A36	STEEL
10	6061-T6		1	FLOOR PLATE, DIAMOND TREAD, 3/16 X 36 X 41 1/2	ASTM B632	AL ALY
9	6061-T6		1	FLOOR PLATE, DIAMOND TREAD, 3/16 X 10 1/2 X 41 1/2	ASTM B632	AL ALY
8			7	ANGLE, 3/16 X 1 1/2 X 1 1/2 X 5 LG	ASTM A36	STEEL
7			10	ANGLE, 3/16 X 1 1/2 X 1 1/2 X 10 LG	ASTM A36	STEEL
6	6061-T6		1	FLOOR PLATE, DIAMOND TREAD, 3/16 X 20 X 32	ASTM B632	AL ALY
5	6061-T6		3	BAR, 1/4 X 2 X 33 LG	ASTM B221	AL ALY
4	6061-T6		1	FLOOR PLATE, DIAMOND TREAD, 3/16 X 35 X 31	ASTM B632	AL ALY
3	6061-T6		1	BAR, 1/4 X 2 X 36 1/2 LG	ASTM B221	AL ALY
2	6061-T6		1	FLOOR PLATE, DIAMOND TREAD, 3/16 X 17 1/2 X 39	ASTM B632	AL ALY
1	6061-T6		1	FLOOR PLATE, DIAMOND TREAD, 3/16 X 26 X 32	ASTM B632	AL ALY

<p>UNLESS OTHERWISE SPECIFIED DIM/TOLERANCES ARE IN IN.</p> <p>ONE PLACE () ± .005</p> <p>TWO PLACE () ± .0025</p> <p>THREE PLACE () ± .0015</p> <p>FOUR PLACE () ± .0010</p> <p>DO NOT SCALE THIS DRAWING</p> <p>FOR INTERPRETATION OF DIMENSIONS SEE THE APPLICABLE</p> <p>SHARP EDGES AND VEE SHARP EDGES</p> <p>SHARP EDGES — TO</p> <p>FILLET RADIUS — TO</p> <p>MATERIAL</p>	<p>DESIGNED BY: EJR</p> <p>ENGINEERED BY: G.T. 0500</p> <p>DATE: 15 Nov 84</p> <p>CONTRACT NO. 37C 2C</p> <p>DESIGN APPROVAL: <i>Patricia M. Smith</i></p> <p>DATE: 15 Nov 84</p> <p>APPROVED FOR PROCUREMENT: <i>Joseph H. ...</i></p> <p>DATE: 15 Nov 84</p>	<p>U.S. ARMY MOBILITY EQUIPMENT RESEARCH AND DEVELOPMENT COMMAND FORT BELVOIR, VIRGINIA 22060</p> <p>LCM-8, MOD-1, INSTALLATION MACHINERY FLOOR SPACE PLATES</p> <p>SIZE: 1500</p> <p>SCALE: NONE</p> <p>97403</p> <p>13226E9452</p> <p>SHEET 1 OF 4</p>
--	--	---

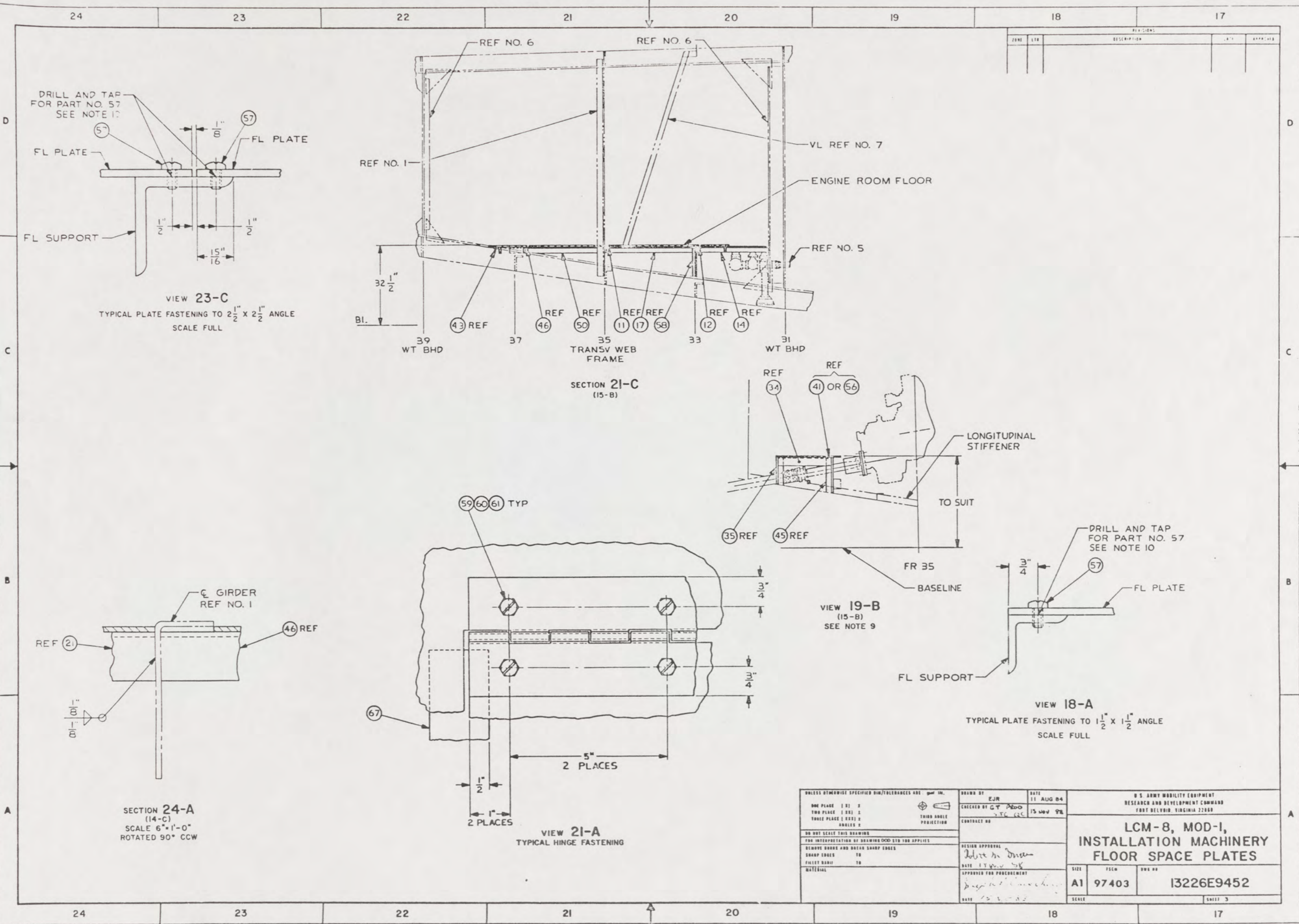


REVISIONS				
ZONE	LTR	DESCRIPTION	DATE	APPROVED

PIN	FROM	QTY	PART OR IDENTIFYING NO.	QTY REQD	NOMENCLATURE OR DESCRIPTION	SPECIFICATION	MATERIAL
PARTS LIST							
UNLESS OTHERWISE SPECIFIED DIM/TOLERANCES ARE: 20/10				DRAWN BY JC/AMF			
ONE PLACE (.X) ±				DATE 20 OCT 87			
TWO PLACE (.XX) ±				CHECKED BY GT PRG			
THREE PLACE (.XXX) ±				DATE 15 NOV 88			
ANGLES ±				THIRD ANGLE PROJECTION			
DO NOT SCALE THIS DRAWING							
FOR INTERPRETATION OF DRAWING DIM-STD-100 APPLIES							
REMOVE BURRS AND SHARP EDGES TO				DESIGN APPROVAL			
BREAK SHARP EDGES FILLET RADIUS TO				DATE 15 NOV 88			
MATERIAL				APPROVED FOR PROCUREMENT			
				DATE 15 NOV 88			
SIZE A1		FSCN 97403		DUG NO. 13226E9452		SHEET 2	

VIEW 13-A
(5-B)
SCALE NONE

H



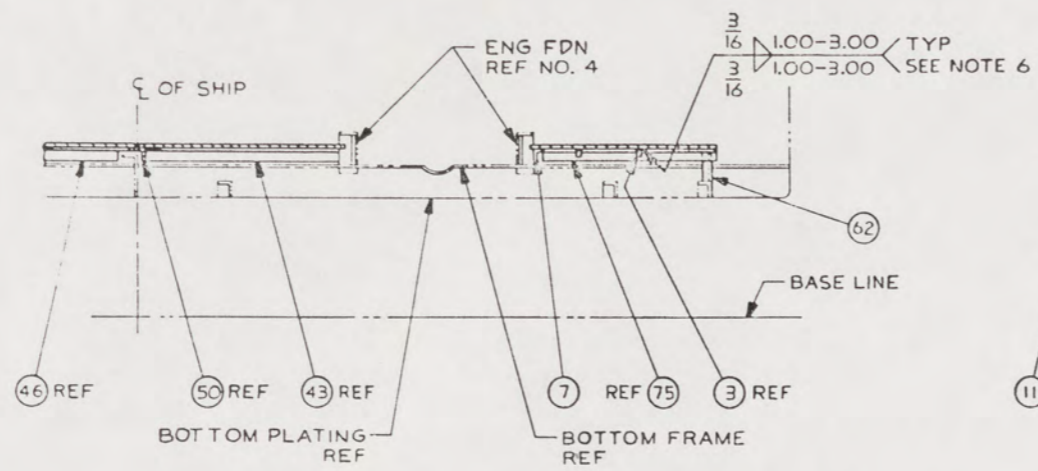
ZONE	STR	DESCRIPTION	DATE	APPROVED

UNLESS OTHERWISE SPECIFIED DIMENSIONS ARE IN INCHES.		DRAWN BY EJR	DATE 11 AUG 84	U.S. ARMY MOBILITY EQUIPMENT RESEARCH AND DEVELOPMENT COMMAND FORT BELVOIR, VIRGINIA 22060	
ONE PLACE 1 01 2	TWO PLACE 1 001 2	CHECKED BY G.T. P... J.T.C. G.C.	15 NOV 98	LCM-8, MOD-1, INSTALLATION MACHINERY FLOOR SPACE PLATES	
THREE PLACE 1 0001 2	FOUR PLACE 1 00001 2	CONTRACT NO.			
DO NOT SCALE THIS DRAWING	FOR INTERPRETATION OF DIMENSIONS SEE THE APPLICABLE	DESIGN APPROVAL <i>[Signature]</i>		SIZE A1	PAGE NO. 97403
REMOVE BURRS AND BREAK SHARP EDGES	SHARP EDGES TO	DATE 11 NOV 98			
FILLET RADIUS TO	MATERIAL	APPROVED FOR PURCHASEMENT <i>[Signature]</i>			
		DATE 15 NOV 98			

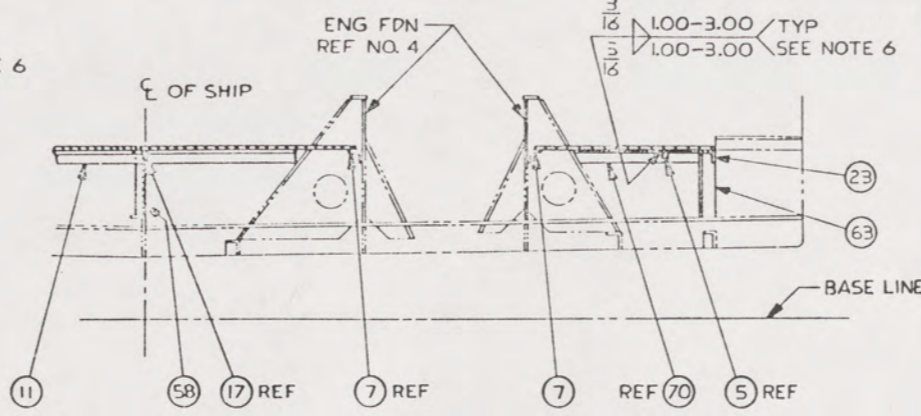
15

32 31 30 29 28 27 26 25

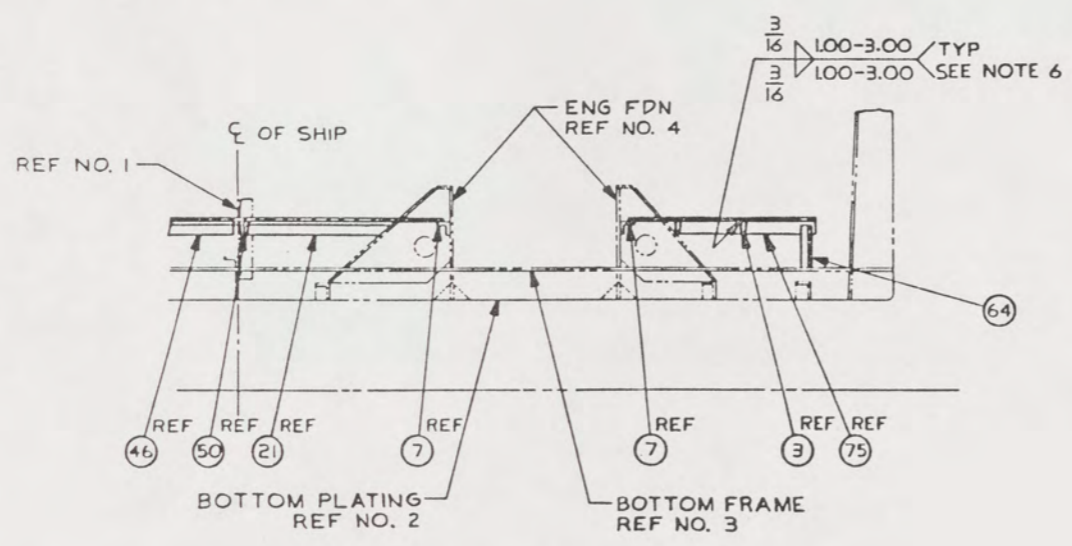
REVISIONS		DATE	APPROVED



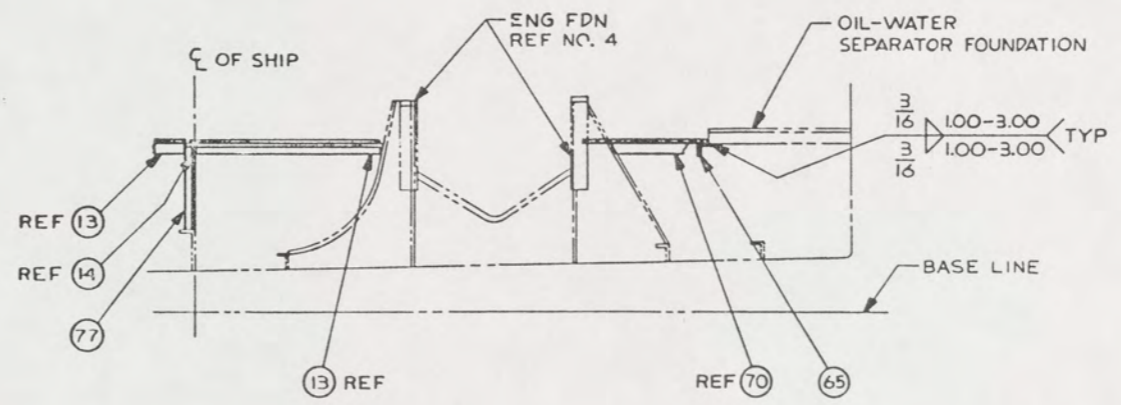
SECTION 31-C
(14-D)
ROTATED 90° CW
FR 37



SECTION 28-C
(13-D)
ROTATED 90° CW
FR 35



SECTION 31-A
(13-D)
ROTATED 90° CW
FR 36



SECTION 27-A
(12-D)
ROTATED 90° CW
FR 32

16

UNLESS OTHERWISE SPECIFIED DIM/TOLERANCES ARE \pm IN.		DRAWN BY EJR	DATE 15 AUG 64	U.S. ARMY MOBILITY EQUIPMENT RESEARCH AND DEVELOPMENT COMMAND FORT BELVOIR, VIRGINIA 22060	
ONE PLACE (0.01)	3	CHECKED BY DT PDD	DATE 15 NOV 68	LCM-8, MOD-1, INSTALLATION MACHINERY FLOOR SPACE PLATES	
TWO PLACE (0.02)	3	CONTRACT NO.			
THREE PLACE (0.001)	3	DESIGN APPROVAL <i>John H. Smith</i>		SIZE A1	PAGE NO. 97403
FOUR PLACE (0.0001)	3	DATE OF PRODUCTION 15 NOV 68		APPRECIATION NO. 13226E9452	
NO DIM SCALE THIS DRAWING		MATERIAL		SCALE	SHEET 4

32 31 30 29 28 27 26 25