

THE WEATHER

Cloudy and colder tonight and Sunday with rain or snow in east portion tonight and on the coast Sunday. Cold wave in east and central portions. Fresh to strong N. winds.

DAILY REFLECTOR

MORE THAN A NEWSPAPER - AN INSTITUTION

NEWS FOR THE READER - RESULTS FOR ADVERTISERS

"TRUTH IN PREFERENCE TO FICTION"

Vol. 87 No. 10

GREENVILLE, N. C., SATURDAY AFTERNOON, DECEMBER 20, 1924

Price 5 Cents

NIGHT COMMISSION HOST TO OFFICIALS ADJOINING CITIES

Accomplishments of Local Commission Praised by Visitors At Oyster Roast Last Night

Praise of the efficient service being rendered by the Greenville water and electric power plants and a suggestion as to the linking together of the larger plants in eastern North Carolina with a view of developing the territory electrically were the chief topics discussed in a number of important talks last night at an oyster roast here when the Greenville Water and Light Commission entertained the officials of Greenville and representatives of other towns in the immediate section.

Following the arrival of guests from Wilson, Bethel, Robersonville, Williamston and Winterville, there was an inspection of the Greenville plant, after which all partook of a delightful oyster roast.

Mayor D. M. Clark of this city, master of ceremonies, called upon representatives of the other towns for a few brief remarks. Mayor's Fountain Cox of Winterville; John Rook of Bethel, and G. H. Cox of Robersonville, all of which places receive their electric lights and power from the Greenville plant, were high in their praise of the efficient service being rendered them and the great savings which their towns had enjoyed since giving up their operation of their individual plants to become a part of the Greenville system.

Mr. Dick Grantham of Wilson, spoke highly of what was being accomplished by the Greenville plant and followed with an expression of hope that the cities of eastern North Carolina could get together on a plan for the linking together of their plants into one big unit in the interest of the best possible service at the lowest possible cost and the development of this section of the state from an electrical standpoint. Mr. Grantham's remarks were supplemented by those of Mayor Haswell of Williamston, who praised what had already been accomplished in this line and setting forth the possibilities throughout the community through greater electrical development.

The talks of the visitors were followed by those from members of the Greenville Water and Light Commission and Board of Aldermen. Reports given out by Superintendent Swartz furnished the information that the city of Greenville had been in darkness only twelve minutes during nearly three years. From July 1, 1922 to July 1, 1923, the local plant was shut down for a period of nine minutes, while during the year ending July 1, 1923, the plant operated with only a loss of two minutes. Since July of this year, there has been a loss of only one minute by the plant and this loss was occasioned by the switching from one machine to another at two o'clock one morning in October. This record brought much praise from the visitors and "is one of which the citizens of Greenville should be justly proud," they declared.

Says Feasible Way To Secure Bridge Is Counties Contribute

Elizabeth City, Dec. 20.—The State Highway Commission could not pay enough money in one project to erect the proposed bridge over the lower part of the Chowan river. It had the additional \$35,000,000 bond issue, according to W. L. Cochran, counsel for the commission who spoke to a group of citizens of that section this week. Mr. Cochran expressed himself in favor of erection of the bridge but said that he did not believe that the legislature could be persuaded to make a special appropriation for this purpose. He said that the most feasible way to get the bridge would be to have the counties that will profit most by its erection to contribute to its cost.

Telegrapher on Trial as Girl's Slayer.



VENA MOORE & C. A. ROARK.

C. A. Roark, Detroit telegrapher, is on trial for his life as the alleged slayer of pretty Miss Vena Moore, who was employed in the same office. Roark has maintained complete silence concerning the tragedy. His young wife is prostrated, but hopes he will be absolved.

BETHEL MAN DIES FROM AUTO WRECK

Accident Occurred on Hard Surfaced Road Near Conetoe Late Thursday Evening

John Simonds, 28 years old, who resided about a mile from Bethel, died early this morning in a Tarboro hospital as a result of injuries received Thursday when his car collided with another car on the hard-surfaced road near Conetoe and overturned.

Simonds was returning from Tarboro, according to reports of the accident, and collided with a car driven by a negro as it came upon the highway at a cross roads. Simonds car ran off the road and turned over three times, it was said.

Simonds, who lost his wife a little more than a year ago is survived by one small child.

R. O. King Resigns His Position With Associated Press

Raleigh, Dec. 20.—Robin O. King, for the past eighteen years correspondent for the Associated Press, has acquired an interest in the Carolina Jeffersonian, a weekly publication of this city, and will assume his duties as managing editor of that publication on January 1.

Mr. King today tendered his resignation to the Associated Press, after serving that organization since 1905.

Morrison Paroled Marston Stillwell Remainder of Term

Raleigh, Dec. 20.—Governor Cameron Morrison has paroled Marston Stillwell of Burke county for the remainder of his term, he having served one year of a two year sentence.

Stillwell was convicted at the December term 1923 of the Superior court of Burke county of a statutory offense. His parole was recommended, the Governor said, by R. L. Huffman, the solicitor who prosecuted him, and other county officers. His family is said to need him.

NORFOLK-SOUTHERN DEPOT FARMVILLE DESTROYED BY FIRE

Origin of Fire Believed to Have Been in Trash to Rear of Warehouse; Two Box Cars Also Destroyed

The Norfolk-Southern depot, both passenger rooms and freight warehouse, of Farmville, was destroyed by fire Friday afternoon at 1 o'clock. The fire, it is believed, was caused by some one throwing a match into some trash under the platform to the rear of the warehouse.

The fire was not discovered until it had gained such headway that it was impossible to control it. The flames were carried by the wind to two box cars which were standing in close proximity to the depot, and they were totally destroyed.

The fire had its origin to the rear of the warehouse because it was in that immediate section that the flames were first seen. An effort was made despite the heat and smoke to remove the baggage which consisted of college girls and boys' trunks and traveling salesman's trunks, but to no avail as the fire had gained such a headway before it was discovered.

The estimated loss could not be ascertained. Neither was information available as to the amount of insurance on the buildings.

Local Tobacco Market Closes for the Holidays

The Greenville tobacco market closed yesterday for the Christmas holidays and will re-open on Monday, January 12. The market has sold for the season 27,204,604 pounds at an average of \$24.31. For the week ending December 19, the market sold 1,216,128 pounds.

The season has without a doubt been one of the most successful since the opening of the local market. The co-operation of the buyers, warehousemen, and farmers has made this possible, and with the continued co-operation the market at the close of the season will have an enviable reputation.

Considering the disadvantages caused by the heavy rains during the summer months which damaged the tobacco, the average made have been most satisfactory. The sales have attracted people from adjoining counties and States and the market has gained many new friends.

Mr. K. W. Cobb, secretary and treasurer of the Greenville Tobacco Board of Trade, estimates that there are yet to be sold nearly 1,500,000 pounds. At the close of yesterday's sales the market was stronger than at any time since Thanksgiving, and it is expected that the January sales will be even stronger.

Jews to Celebrate Feast of Chanukah For Eight Days

Raleigh, Dec. 20.—Beginning Sunday, December 21, Jews throughout North Carolina will follow the custom of those of the same faith throughout the world and for eight days will celebrate the Feast of Chanukah.

At the synagogue throughout the state a candle will be lighted each night until eight have been lighted. This will represent the Feast of Light, which is in commemoration of the miracles and acts of salvation performed by the forefathers by the medium of the Holy Spirit.

Death Rate From Cancer On Increase In United States

Washington, Dec. 20.—The death rate from cancer increased in the United States in 1923 while the fight against the disease made progress. A total of 100,000 deaths was reported by the Bureau of Health Statistics last year, an increase of 5,816 over the 94,184 reported in 1922 or a rate of per 100,000 of 39.4 against 38.8 in 1922.

Government Report on Ginnings.

Ginnings 12,796,000 vs. 9,549,015 and in 1920 10,876,263. Ginned Dec. 1, 12,325,025 vs. 9,243,380 and in 1920 10,141,293 ginned Dec. 1 to 13, 5,571,000 vs. 3,056,335 and in 1920 734,970, crop lint government estimate 13,153,000 vs. 10,140,000 and in 1920 10,440,000.

RELATIVE STRENGTH OF AMERICAN NAVY MAY YET BE LEARNED

Those Desiring Investigation of Navy Status See Hope for Desired Information Through Britten Bill

Washington, Dec. 20.—Members Congress favoring investigation of the relative condition of the American Navy were entering their hopes today on the Britten bill to construction, as a vehicle to hearings from the House Naval Committee which would satisfy their aims in the investigation.

The bill was introduced by Representative Britten, ranking Republican of the Naval Committee, coincident with the passage by the House late yesterday of the naval supply bill carrying nearly \$300,000,000 for activities already authorized.

The bill automatically being referred to the Naval Committee Representative Britten, said the hearings to be held would serve to develop the information showing just where the American Navy now stands with regard to 5-5-3 ratio provision of the Arms Treaty. In addition to the building four scout cruisers at a cost of \$11,100,000 among other items the bill would authorize the elevation of the turret guns on thirteen battle-ships, aggregating a cost of \$6,500,000.

GOMPERS WILL IS FILED FOR PROBATE WASHINGTON TODAY

Will of the Late Labor Leader Leaves Bulk of His Estate to Sons and Granddaughters

Washington, Dec. 20.—The will of Samuel Gompers, filed today for probate, left the bulk of his estate to his sons and granddaughters and directed that only the minimum amount allowed by law should be paid the widow.

Dated November 8, 1924, the will was accompanied by a mutilated copy of another made previously torn and across the face of which was written I cancel and revoke this will.

Under the cancelled will executed September 21, 1921, the labor leader after providing for a number of special bequests had left the bulk of his estate to his widow, Gertrude A. Gompers to whom he was married April 6, 1921. The last will declared that the payment allowed under law should be made "provided Mrs. Gompers is my lawful wedded wife at the time of my death and if not she shall not receive any part of my estate whether real, personal or mixed."

Mrs. Gompers was Gertrude Nease, of New York, at the time of her marriage her age was given as 28 years.

Under the laws of the District of Columbia dower rights of a widow may not be taken away by a will. The will bequeaths \$400 each to six organizations for the purchase of an American flag by each. The organizations are American Federation of Labor, Cigar Makers Local 141 of New York, Dawson Lodge of Masons, Washington; Washington Lodge of Elks and New York Lodge of Elks. The remainder of the estate the value of which was not given is bequeathed to his granddaughters in equal shares. Samuel J. Gompers was named executor.

SABRE SLAYER HELD DESPITE FATHER'S PLEA.



GEORGE SHAW, MRS. H. H. BRADY & DRUCE A. SHAW

George Shaw, of Oak Park, Ill., fashionable suburb of Chicago, has been charged with the murder of his wealthy father, Bruce A. Shaw, inventor and author, slain with a sabre while the son was gin-mad, according to police. Mrs. Hazel Howard Brady, divorcee, whom younger Shaw took home with him after a drunken orgy at a roadhouse, police allege, testified at the inquest. Bruce Shaw was attacked after he upbraided his son. With his last breath he pleaded for his son, who, he said, had been shell-shocked in France and was not accountable for his murderous impulses.

FIRE TAKES LIVES OF TWO SMALL CHILDREN

Detroit, Mich., Dec. 20.—An overturned stove which set fire to a home in Ferndale, a suburb, took the lives of Mildred Whitman, two years old, and John F. Johnson, three years old, today and caused the burning of three other children one of whom is not expected to live.

Episcopal Sunday School Will Present Christmas Program

The St. Paul's Episcopal Sunday School will present the following program Sunday morning at 9:15 o'clock. The public is extended a cordial invitation to attend.

Hymn No. 79, "It Came Upon the Midnight Clear," School.

Opening Prayers, Creed and Psalm, Superintendent.

Recitation, "Ring the Bells," Charlotte Butner.

Recitation, "A Christmas Folk-Song," Mae Hearn.

Recitation, "It's Me," Frank Wooten.

Song, "O Little Town of Bethlehem," Four Children, Misses Charlotte Butner, Mary Elizabeth Ferguson, Gladys Weppeler and Agnes Gaskins.

Recitation, "A Warning," Imogene Ricks.

Recitation, "At Christmastide," Agnes Gaskins.

Recitation, "The Christ Child," Mary, Elizabeth Ferguson.

Recitation, "The Christmas Guest," Gladys E. Weppeler.

Hymn No. 544, "Silent Night," School.

Address on Christmas, Superintendent.

Announcements.

Closing prayer and Benediction, Rector.

Recessional Hymn No. 83, "Thou Didst Leave," School.

CHARTERS GRANTED

Raleigh, Dec. 20.—The office of the Secretary of State has issued the following charters:

The Warren Company, incorporated, Prospect Hill, general merchandise retailers, with authorized capital of \$50,000 and \$8,500 subscribed by F. R. Warren and V. L. Warren, Prospect Hill, and Irving Warren, Mebane.

Sterling Grocery Company, Wilmington, wholesale, with authorized capital of \$10,000 and \$10,000 subscribed by J. T. Gresham, Warsaw, R. B. Shepard, Wilmington, and W. F. Brooks, Marion, South Carolina.

Tuxedo Club, incorporated, Winston-Salem, libraries, pool tables, reading rooms, baths, pleasure etc., with authorized capital of \$5,000 and \$1,202 subscribed E. L. Crouch, Oscar H. Rothrock and G. C. Thompson, all of Winston-Salem.

FREEZING WEATHER BEFORE MONDAY IS BUREAU FORECAST

Western States Are Emerging From Five Days' Icy Grip of Winter Which is Moving Eastward

Washington, Dec. 20.—Predictions for mostly fair weather with considerable cloudiness in the Washington forecast district during the next 36 hours were announced by the Weather Bureau today. However, local snows are probable in the lower lake regions and rains in Florida with probable rains or snows in portions of the South Atlantic states and along the east gulf coast.

Temperatures will continue to fall tonight throughout the Eastern and Southeastern states and the cold weather will remain for several days. Freezing temperatures are probable as far south as extreme northern Florida tonight and central Florida by Monday. Cold wave warnings were sent out Friday to all sections of the Appalachian mountain district.

CHRISTMAS AT WHITE HOUSE TO BE QUIET

Chicago, Dec. 20.—The icy grip of winter was slowly releasing the far west and Rocky Mountain regions today while it was heightened in the middle western states and began developing in the east. Although nearly normal temperatures have been reached in most of the cold area in the past 24 hours, days will shape before wire and rail communications, which were virtually paralyzed in some sections resume usual operations.

Meanwhile the toll of lives continues to mount as deaths from fires caused by overheating quiet this year because of the death Fire departments in the middle west during the past twelve months of ten cities have answered hundreds of calls during the cold wave. Considerable suffering has been felt among the poor but relief organizations have not reported to have been overtaxed by the demand for aid.

Warm winds are forecast to bring relief to the Pacific coast after a zero weather in the northwest and heavy frosts in California necessitated the smudge pots and nipped the angel hutes. Rising mercury and fair skies were reported in Montana and Colorado, the last of the Rocky Mountain states to feel relief after the five days of bitter cold. A man and a woman froze to death in the Butte district.

Dallas, Texas, Dec. 20.—A blizzard hadpennated the Texas and east and lower Rio Grande regions today demolishing wire communications and probably doing great damage to the citrus fruit crops in the Brownsville section according to the local weather bureau. A temperature of 23 degrees prevailed in Brownsville with a fast falling in Galveston and Houston. Brownsville and Beaumont are practically isolated so far as wire communications are concerned.

Assessed Value Property Twin City Placed \$122,377,187

Winston-Salem, Dec. 20.—Assessed value of the property in the city of Winston-Salem is placed at \$122,377,187 by City Tax Collector R. R. Kinney.

The tax rate is \$1.10 making the total tax to be collected by this city in 1924 run about \$1,159,005, it is estimated. The assessed value in 1923 was \$107,420,818 and the tax rate was 95 cents giving a total revenue of \$1,027,328.06.

Pastor's Summer School Will Open At Trinity June 10

Durham, Dec. 18.—The Pastor's Summer School of Trinity College will open here on June 10, 1925, it has been decided by the Board of Directors of the Trinity College Summer School. Professor H. E. Spence, head of the department of religious education of the college, will continue to direct the affairs of the school. Pastors from throughout the state gather here every summer for this special school, it was said, and the directors are planning extensive preparations for the next session.

Mr. J. A. Applewhite will conduct services at Fleming's school house Sunday morning at 11 o'clock. The public is invited to attend.

JUST 3 DAYS TO SHOP

The Daily Reflector

Established 1882
Every Afternoon Except Sunday
David J. Whitchard, Jr., Owner and Publisher

Telephone 56
Entered at the Post Office at Greenville, N. C.,
as second class mail matter
SUBSCRIPTION RATES
One year \$5.00
Six months 2.50
Three months 1.25
One month .30
One week (by carrier) .20
One week 15
Subscriptions will be discontinued at expiration
of time paid for

MEMBER ASSOCIATED PRESS
The Associated Press is exclusively entitled
to the use for republication of all news dispatches
credited to it, or not otherwise credited in this
paper and also the local news published herein
All rights of republication of special dispatches
is also reserved.

ACT OR GET OUT

Despite all that has been said regarding
the failure of the Greenville Chamber of
Commerce to function, the organization is
still a dead institution and unless there is a
change in attitude on the part of the board
of directors it will remain in its present state.

During the months of inactivity the officials
have received a number of applications for
the position of secretary for the organization,
many of the applicants being qualified to carry
on the work and ready to begin as soon as
their selection is approved by the board of
directors.

Realizing that the situation is one that
should have immediate attention if Green-
ville is to go forward as she should, the offi-
cers called for a meeting of the board of di-
rectors to hire a secretary on Thursday night
of last week. Each member of the board was
seen and requested to be at the meeting and
each appeared enthusiastic over the possibili-
ty of activity on the part of the Chamber of
Commerce becoming a reality. The hopes of
those, who heard that a secretary was to be
employed and work for the city's good to
begin, soared high at the apparent enthusi-
asm of the board but when the night for the
meeting arrived these hopes were again shat-
tered for there appeared at the meeting only
three persons including the president of the
organization. After two hours of waiting,
during which time efforts were made to get

in touch by telephone with other members of
the board with the hope of securing a quorum,
those three present gave up in despair and
went home and the Chamber of Commerce
was no more a reality than it has been for sev-
eral months past.

We understand that the president has called
another meeting of the board of directors
for the purpose of employing a secretary to
carry on the work of the commerce body. It
is to be hoped that the member of the board
will realize that as citizens of Greenville,
chosen by members of the Chamber of Com-
merce to direct the affairs of that organiza-
tion they have a duty to perform and will be
on hand when the hour of the next meeting
arrives. In the present progressive age there
is no room in the line of march for half-hearted
or disinterested action and if the members
of the board of directors of the Chamber of
Commerce are not interested enough in the
future of their city to put their shoulders to
the wheel of progress and help to move it on
toward greater prosperity, they should step
down and out and turn their places of re-
sponsibility over to those who realize that
community progress and prosperity mean
greater individual prosperity and happiness
in the end.

THE POWER IN UNITY

A greater Eastern North Carolina made
possible by the joining together of the power
plants of the larger cities of the section and
development of the surrounding territory as
suggested in impromptu talks by representa-
tives of the various towns and cities present
at the municipal oyster roast here last night is
a topic that is well worth serious considera-
tion by the officials and citizens throughout
the entire section.

Such a step is the only means by which
the community will be able to combat the
great power monopolies which will sooner or
later attempt to get control of this section
the same as in other sections of this and other
southern states. In communities where
these power monopolies have gained con-
trol the tax payers in the end have suffered
through higher taxes and exorbitant rates
and while we have time and the facilities to
prevent such an occurrence in Eastern North
Carolina we should begin to give the matter
serious consideration.

RADIO PROGRAM
FOR TOMORROW
(Courtesy of Radio Digest)

Program for Dec. 21.
KFGZ Berrien Springs (270) 7
Christmas story; 8:15 hymns; 8:30
solos, duets; 8:50 violinist; 9 soprano
9:15 sermon.
WEEI Boston (305) 6:20-10 mu-
sical.
WEEI Chicago (270) 7-9 artists
WGR Buffalo (319) 6:15 services.
WGN Chicago Tribune (370) 9 en-
semble.
KYW Chicago (536) Sunday eve-
ning club services.
WLS Chicago (345) 6:30 organ;
7-8 Salvation army band.
WLW Cincinnati (423) 7:30 ser-
mon; 8:30 concert.
WHK Cleveland (283) 7 chapel
services; 8 concert.
WOC Davenport (484) 8 services;
9:30 musical.
WHODes Moines (526) 7:30-9 cor-
netist, artists.
WCX Detroit Free Press (547)
6:15 services.
WKB Kansas City (411) 3:45 a. m.
Christian church; 8:45 p. m. ser-
vices; 12 popular program.
WDAF Kansas City Star (411)
classical music.
KNX Hollywood (337) 10 orche-
stra; 11 saxophone band.
KTHS Hot Springs (375) 8:30 con-
cert.

NOTICE

Take notice that certificate of de-
posit Number 593, issued by the
Bank of Conetoe, Conetoe, North
Carolina, July 12th 1924, to R. H.
Brady, R. F. D. No. 2, Bethel, North
Carolina in the amount of \$1500.00
has been lost by the owner. The
finder is requested to return said
certificate of deposit to the owner, or
to the Bank of Conetoe, Conetoe,
North Carolina.

This, 2nd day of Dec. 1924.
R. H. BRADY,
Owner of Certificate of Deposit.
Bank of Conetoe, Conetoe, N. C.
Bank issuing certificate of deposit.
John Hill Taylor, Atty., Farmville,
North Carolina. 2 2tw 1w

EXECUTRIX NOTICE

Having qualified as executrix of
the estate of J. Marshall Cox, de-
ceased, late of Pitt county, N. C.,
this is to notify all persons having
claims against the estate of the de-
ceased to exhibit them to Sam. G.
Worthington, attorney, at his office
in Greenville, N. C., on or before the
1st day of December 1925 for this
notice will be pleaded in bar of their
recovery. All persons indebted to
said estate, will please make imme-
diate settlement.

This the 24th day of Nov. 1924.
MRS. J. MARSHALL COX,
Executrix of J. Marshall Cox.
Sam G. Worthington, Atty. 25 1tw6wks

I want to express my appreciation
to those who are co-operating to
this extent. Every member of our
Sunday school loves it and is interest-
ed in seeing it grow. If we will con-
tinue to pray and do personal work
we will see continuous growth, not
only in numbers but spiritually. As
we grow in spirit and love for our
Sunday school we will grow even
stronger in love for our Saviour
Jesus Christ. His is the greatest of
all and we should in turn give to
him our greatest love. We can do
this in our Sunday School. Pray a
little more, work a little more, co-
operate a little more and we will
love a great deal more.

I have asked the help of every
member of our school during this
week, and I am satisfied that each
one will be happy tomorrow, with me
in seeing the result of their efforts.
Don't let up until the very last
minute. Some of our best work can
be done tomorrow morning. Get up
a little earlier and get in touch with
someone and see that they attend
Sunday school, promptly at 9:15. If
necessary drive by for them. There
are a number who will go to Sunday
school if they have a way to ride.
Call on any member of our school
for the use of their automobile. This
is the way Jesus would have us use
our cars. We will appreciate hav-
ing it more.

Please come on time, 9:45 so that
we can put in a full hour. We need
to start on time to close on time.
Strangers and visitors are cordially
invited to meet with us. We will
make you feel at home. Remember
we start promptly at 9:45 o'clock.
J. B. KITTRELL, Supt.

BICYCLES
BICYCLES
We handle the Rambler Bicycles,
the best on the market, with rust
proof spokes in them, also second-
hand Bicycles.
SKITTLETHARPE
Bicycle Repair Shop
Just Below Flanagan Buggy Co.
East 4th St.

YOU CAN'T REAT
ELECTRIC
COOKERY

Why not turn the Holi-
day Cooking From
Drudgery To a Pleasure
by Installing an Elec-
tric Range Today.
Open Evenings
Water & Light
Commission

BRUNSWICK RADIOLA HERE
Look, that Brunswick Radiola is here!
Nothing compares with it. Have gotten
in touch with London, Spain, and Italy for
the last six nights during international con-
test. Come in and look it over.
LAUGHINGHOUSE-MORTON MUSIC
COMPANY

WHAH Iowa City (184) 9:0-9:30
hymns.
WOS Jefferson (410.9) 7:30 re-
ligious services.
KFI Los Angeles (469) 8:45 talk
9 orchestra; 10 one act plays; 11
orchestra.
KJS Los Angeles (360) 8 vesper
service; 10 sermon, sacred music.

SALE OF VALUABLE FARM
PROPERTY.

Under and by virtue of authority
conferred upon us in a deed of trust
executed by Israel E. Hardee and
wife, Emma E. Hardee, on the 1st
day of June 1923, and recorded in
Book of Mortgage, 111, at page
549 in Pitt county, we will on Satur-
day, the 17th day of January, 1925,
at 12 o'clock noon, at the court house
door in Greenville, sell at public
auction for cash to the highest bid-
der the following land to-wit:
Four certain tracts or parcels of
land situated in Chicod Township,
Pitt County, North Carolina, to-wit:
FIRST TRACT: Adjoining the
lands of W. L. Smith and J. A. Wil-
liams on the North and north east,
the lands of J. E. Hardee on the east,
the lands of J. J. Oakley on the
south and southwest and the Harring-
ton land on the West and more spe-
cifically described as follows:
Beginning at a stake on the west
side of the New Bern and Greenville
Road and runs with the line of J. E.
Hardee south 4 west 90 poles to a
stake, thence with the line of J. J.
Oakley south 74 west 119 poles to a
stake, thence again with line of J.
J. Oakley, N. 13 east 81 poles to cor-
ner thence with the line of the Har-
rington land north 56 west 194 poles
to corner of Clay Root Swamp Drain-
age Canal, thence with the Clay Root
Swamp Drainage Canal north 44-20
east 107.9 poles to corner of the J. A.
Williams land, thence with the line
of J. A. Williams and I. E. Hardee
south 51 E. 10.3 poles, then south
53-30 east 195.8 poles to the begin-
ning, containing 1387 acres, by ac-
tual survey of W. C. Dreshbach, C.
E., January 1923 and being the home
place of I. E. Hardee.

SECOND TRACT: Adjoining the
lands of H. C. Venters heirs on the
north, the land of W. B. Bland on
the east, the lands of H. C. Venters,
now C. E. Venters on the south, the
lands of G. W. Venters on the west
and more specifically described as
follows:
Beginning at an old cotton gin
corner, Wallowhilly Adams corner,
and runs with the line of H. C. Ven-
ters, now C. E. Venters, north 89-30
east 22 chains, to a large white oak,
W. B. Bland and I. E. Hardee corner,
thence with the line of W. B. Bland
north 20 west 5.3 chains to Ernie W.
Bland oak another corner of said W. B.
Bland and I. E. Hardee, thence with
the line of H. C. Venters heirs south
89-30 west 32 chains to a corner I. E.
Hardee and G. W. Venters, thence
with the line of G. W. Venters south
20 east 5.8 chains to the beginning,
containing 18 acres by actual survey
of W. C. Dreshbach, C. E., January,
1923.

THIRD TRACT: Bounded by the
old Washington road on the north
\$1000.00, a certain lot or parcel of
land lying and being in the town of
Ayden, county of Pitt, state of North
Carolina, described as follows:
Beginning at a stake G. W. Ven-
ters corner, and runs with the line
of H. C. Venters north 76 east 8 4-5
chains to stake on new road, thence
with the new road north 5 1-2 east
2.5 chains, then north 15 1-2 east 7
chains to stake, on the old Washing-
ton road, thence with said road as
follows: S. 71 west 4.10 chains, then
south 80 1-2 west 2 1-2 chains, then
north 88-50 west 2 chains then north
82 west 3 4-5 chains to corner of
garden, G. W. Venters corner, then
with the line of G. W. Venters south
7 east 10 chains and 32 links to the
beginning, containing 9.5 acres by
a actual survey of W. C. Dreshbach, C.
E., January 1923.

FOURTH TRACT: Adjoining the
lands of G. W. Venters on the north,
the lands of G. W. Venters on the
east, the lands of H. C. Venters on
the south and south east, and the
lands of G. W. Venters on the west,
and more specifically described as
follows:
Beginning at two black gums, cor-
ner of G. W. Venters tract and run-
ning with G. W. Venters tract south 12
east 80 links, then south 30 east
3.16 chains then south 56 east 2.37
chains, then south 49 east 3.26 chains
then S. 36 1-2 east 4.3 chains to
H. C. Venters corner at a small ditch,
thence with ditch on H. C. Venters'
line south 54 west 3.3 chains, south
62 1-2 west 1.18 chains, south 36
west 3 chains to head of said ditch,
then south 33 west 7 1-2 chains to
fork of three ditches, then south 34
1-2 west 1.85 chains to creek, then
south 57 1-2 west 4 1-2 chains, then
south 20 west 1.17 chains to stake
at fork west ditch, then with ditch
north 55 west 15 1-5 chains to stake
on canal, thence with canal north 39
west 5 chains to white oak at G. W.
Venters Jr., old line then north 88
east 6.37 chains, then north 5 west
1.81 chains then north 45 east 17.87
links, then north 9 1-2 east 5.25
chains, then north 73 1-2 east 5.8
links to the beginning, containing
17.5 acres by actual survey of W. C.
Dreshbach, C. E., January 1923.

This sale is made by reason of
failure of Israel E. Hardee and wife,
Emma E. Hardee, to pay off and
discharge the indebtedness secured
by said deed of trust to the north-
Carolina Joint Stock Land Bank of
Durham.
This, the 10th day of Dec. 1924.
FIRST NATIONAL TRUST
19 1tw4wks

NOTICE OF FORECLOSURE
UNDER MORTGAGE
North Carolina, Pitt County.
By virtue of the authority vested
in me as executor of the will of Guil-
ford Jackson and contained in a cer-
tain mortgage deed from A. L. Jack-
son and wife, Rosa Jackson, executed
a Guilford Jackson to secure a cer-
tain debt evidenced by ten certain
notes or notes, I will proceed to sell
the highest bidder for cash at the
court house door in the town of
Greenville at 12:00 o'clock noon on
the 31st day of December, 1924 in
order to apply the proceeds of said

sale to the discharge of said indebt-
edness and the cost, the following
described tract or parcel of land:
Lying and being in Contentnea
township, county of Pitt and State
of North Carolina and more parti-
cularly described as follows: Bound-
ed by the lands of R. E. Jackson on
the east, on the north by lands of
B. T. Heath, on the south by lands
of Lavenia Jackson and R. E. Jack-
son, on the west by land of A. L.
Jackson; the same being the land
conveyed to A. L. Jackson by Guil-
ford Jackson and wife of even date
containing 50 acres more or less. Of
record in the office of the Register
of Deeds of Pitt county in Book Q
10, page 144.
This Dec. 1, 1924.

N. B. HILL,
Executor of Will of Guilford Jack-
son deceased.

NOTICE OF SALE.

By virtue of the power contained
in a certain decree made by Honora-
ble J. E. Harrington, clerk of the
Superior Court of Pitt County in a
cause entitled W. B. Wilson, Frank
Wilson, Susie E. Wilson and other
heirs at law of Martha E. Wilson,
deceased, ex-parte, the undersigned
will expose to public sale upon the
property hereinafter described, at
12:00 o'clock noon on Monday, Jan-
uary 5, 1925, to the highest bidder,
the following described lot or parcel
of land:
Situated in the town of Greenville
and on the south side of Dickinson
Avenue and east side of Sutton's
Lane. Bounded on the north by
Dickinson Avenue, on the west by
Sutton's Lane, on the south by the
lot of S. T. White, and on the east
by the lot of J. F. King, containing
approximately one-quarter of an acre
and being known as the home-place
of the late Martha E. Wilson. This
property fronts approximately 60 or
62 feet on Dickinson Avenue and ap-
proximately 150 to 165 feet on Sut-
ton's Lane.

TERMS OF SALE: This property
can be purchased either for all
cash or for on third cash and the
balance due and payable in one and
two years from date with six per
cent (6 per cent) interest upon the
deferred payments, said deferred pay-
ments to be secured by a real estate
mortgage upon said property.
This the 2nd day of Dec. 1924.
FRANK WILSON,
Commissioner.
2 1tw4wks

NOTICE OF SALE OF HOUSE
AND LOT (AYDEN, N. C.)

Under and by virtue of the power
of sale contained in that mortgage
deed, executed and delivered by J.
Anderson and wife, Roland Grace
Anderson to Sam White on March
15th, 1922, and duly registered in
Book K-14 at page 73 in the office of
the register of deeds of Pitt county,
and in pursuance of an order of re-
lease by reason of raise of bid at last
sale, the undersigned will on
Friday, December 26th, 1924 at
12 o'clock, noon
at the court house door of Pitt coun-
ty, subject to a prior mortgage in
favor of the Bank of Ayden for
\$1000.00, a certain lot or parcel of
land lying and being in the town of
Ayden, county of Pitt, state of North
Carolina, described as follows:
On the south side of West Second
street and adjoining the lots of Mrs.
Lydia Sumrell on the west; a big
ditch and the Bank of Ayden on the
south; R. C. Coward on the east;
and Second street on the north; said
lot being 70 feet wide on Second
street and 150 feet deep and being
the same lot purchased by J. J. An-
derson from E. D. Little.
This December 10th, 1924.
SAM WHITE,
Mortgagee,
J. S. BROWN,
Owner of Debt.
James L. Evans, Atty. 12 1tw2wk

NOTICE OF SALE OF VALUABLE
CITY PROPERTY.

Under and by virtue of the power
of sale contained in that deed of
trust, executed and delivered by J.
Jenkins and wife Lela P. Jenkins
to James L. Evans, trustee, on the
16th day of January 1922, to secure
the payment of the indebtedness
therein described, the said deed of
trust being duly registered in Book
H-14, at page 483 in the office of the
Register of Deeds of Pitt county,
default having been made in the pay-
ment of said indebtedness and the
owner thereof having demanded a
foreclosure sale, the undersigned will
on
Monday, January 5th, 1925 at 12
o'clock, Noon
expose to sale to the highest bidder
for cash before the court house door
of Pitt county, that certain real es-
tate situated in the town of Green-
ville, county of Pitt, state of North
Carolina, more particularly describ-
ed and defined as follows:
Beginning at an iron stake on
Third street 80 feet east of the north
east corner of Lot No. 127 in the
plan of the said town of Greenville,
Simon J. Waters' southeast corner;
and runs thence in a southerly course
with Simon J. Waters' line 135 feet
to an iron stake; thence a westerly
course with said Simon J. Waters'
line 60 feet to the line of lot No. 127
of the said town, the Harris line;
thence a southerly course with the
Harris and Jenkins' line 121 feet to
Dr. Zeno Brown's line; thence in an
easterly course with the said
Brown's line about 140 feet to Reade
street; thence in a northerly course
with Reade street 256 feet to Third
street; thence in a westerly direction
with Third street 58 1-2 feet to the
beginning, being part of the S. J.
Nobles property and the same that
was allotted to Florence L. Moya in
the Division of the lands of S. J.
Nobles as shown in the Division of
Land Book 3 at page 78 in the office
of the clerk of the Superior Court
of Pitt county, and being the same
and identical property conveyed to
the said J. J. Jenkins by M. C. Moya
and wife Florence L. Moya by deed
dated November 6th, 1919 and duly
registered in Book C-13 at page 45
in the office of the Register of Deeds
of Pitt County, to which reference is
hereby directed for more accurate
description.
This December 3rd, 1924.
JAMES L. EVANS,
Trustee.
3 1tw4wks

SALE OF REAL PROPERTY

By virtue of a power of sale con-
tained in that certain mortgage from
Georgia A. Edmond and William
Edmond to P. M. Simmons, J. A.
Battle and W. P. Norcott, bearing
date of Jan. 8, 1923, and duly re-
corded in the office of the register
of deeds of Pitt county in book W-14
page 22, and default having been
made in the payment of the indebt-
edness secured therein, the undersig-
ned will on Saturday, December 27,
1924, at 12 o'clock, noon, before the
court house door, in the town of
Greenville, N. C., sell at public auc-
tion to the highest bidder for cash,
the following described real estat-
e to-wit:
Lying just outside of the corpor-
ate limits and south of the Town
of Greenville, N. C., beginning at
the Southwest corner of Higgs
Broas' lots on Pitt street as extends,
thence in a southerly direction about
52 feet with the East boundary of
said Pitt street to a branch, thence
down said branch 125 feet to a
stake, thence in a northerly direction
parallel to Pitt street 52 feet, thence
in a westerly direction with Higgs
Broas' line to the corner at the
beginning.
This the 24th day of Nov. 1924.
P. M. SIMMONS,
J. A. BATTLE,
W. P. NORCOTT,
Mortgagees.
24 1tw4w

AT THE LOCAL
CHURCHES

Immanuel Baptist
Sunday School at 9:45 a. m.
Victor Davis, superintendent Sunday
School.
Professor H. E. Austin will speak
to us at the 11 o'clock service.
Let us have a large attendance at
both the Sunday School and to hear
Professor Austin. We extend a cor-
dial invitation to visitors and stran-
gers to worship with us.
There will be no evening services at
this church.

St. Paul's Episcopal
The Rev. J. E. W. Cook, Rector
Fourth Sunday in Advent.
7:30 a. m.—Holy Communion.
9:45 a. m.—Bible Class and Sunday
School. Special Christmas program.
11:00 a. m.—Morning Prayer and
Sermon. Subject: "The Deity of
Christ." (iii) "The Doctrine of the
Church."
6:30 p. m.—Young Peoples' Meeting,
conducted by the Rector.
7:30 p. m.—Evening prayer and ser-
mon. Subject—"The Deity of Christ."
(IV) "The Difference it Makes."
Wednesday, Christmas Eve, at 11
p. m.—Holy Communion and Address
by the Rector.
Thursday, Christmas Day, at 10:30
a. m.—Morning Prayer and Sermon.
Subject: "Immanuel? The Knight
Templars of the city will attend this
service in a body.
Friday, St. Stephen, Martyr. Litany
and address 7:30 p. m.
Saturday, St. John, Evangelist. Holy
Communion 10:00 a. m.
A cordial invitation to all these
services of the church.

Memorial Baptist
Sunday School Is
Growing in Number
Our attendance last Sunday was
larger than the Sunday before. This
is the result of personal work and

Memorial Baptist
Leland W. Smith Pastor.
J. B. Kittrell, Supt. S. S.
R. W. Gorman, President B. Y. P. U.
At the morning hour the pastor will
speak on "His Unspeakable Gift"
(Christmas Sermon). There will be
appropriate music.
At the evening hour the choir will
present a Christmas Cantata "The
World's Redeemer."
A most cordial invitation is extend-
ed to all to attend these services.
The Sunday School will meet prompt-
ly at 9:45 a. m.
The B. Y. P. U. meets at 6:45 p. m.
On Tuesday evening of next week
the annual Christmas celebration for
the Sunday School will take place.

Sunday school 11 a. m.
Jarvis Memorial Methodist.
V. P. Scoville, pastor.
Sunday school at 9:45. J. H. Rose,
Supt.
Christmas service at 11 a. m. The
sermon will fit the occasion.
At 7:30 p. m. there will be a
"White Christmas" service, with a
program by the children of the Sun-
day School. All are asked to bring
an offering for the poor of either
clothing, food or money.
The League will meet as usual.
We cordially invite you to worship
with us.

Christian Church.
Lee Sadler, minister.
9:45 Bible School. W. E. Hooker,
Supt.
11:00 a. m. Sermon by the pastor.
Subject: "Christmas."
Endeavor Societies at regular
places and hours.
7:30 Sermon by the pastor. Sub-
ject: "My Redeemer and My Lord."
Christmas music at both morning
and evening worship. Everybody
welcome.

BRUNSWICK RADIOLA HERE
Look, that Brunswick Radiola is here!
Nothing compares with it. Have gotten
in touch with London, Spain, and Italy for
the last six nights during international con-
test. Come in and look it over.
LAUGHINGHOUSE-MORTON MUSIC
COMPANY

LOCALS

Miss Frances Moseley will return home Sunday afternoon from New York city, where she has been attending school.

Mr. Phil Boo, of Winston Salem, was here today.

Mr. Edwin Wilkinson is home from Wake Forest, where he has been attending school.

Miss Mildred Barnes, of Wilson, spent today with Mrs. Curtis Perkins.

Mr. Ed Blalock, of Kinston, spent today here.

Mr. Foster Young, of Wilson, was here today.

Messrs. Horace Mabe and Edward Moors are spending the week-end in Wadesboro.

Mr. Charles Skinner will return tonight from Woodbury Forest, Va., where he is attending school.

Mr. and Mrs. Lee, Hannah are spending the week-end in Rocky Mount.

Miss Alice Lee, teacher returned today from Gainesville, Ga., for the holidays.

Mr. J. J. Laughinghouse, of Oriental, is spending a few days in the city.

Miss Sarah Gulley, who is attending school in Greensboro, is at home for the holidays.

Mr. and Mrs. N. C. Everett, of Robersonville, were here yesterday.

Mr. W. J. Nichols arrived yesterday from Richmond, Va., to spend the holidays.

Messrs. Hank James, Harry Brown and Joseph Moyer, arrived last night from Chapel Hill to spend the holidays.

Mr. Elmer Hardee who is attending school at Asheville has arrived to spend the Christmas holidays with his parents, Mr. and Mrs. D. W. Hardee.

Mr. C. Heber Forbes, Jr., who is attending school at Bedford, Va., has arrived to spend the holidays with his parents, Mr. and Mrs. C. H. Forbes, Sr.

Misses Elizabeth Gaskins and Elizabeth Bost, who are attending school in Greensboro, are spending the holidays with their parents in this city.

Messrs. Zeno Brown and Will Whitbee, students of the U. N. C. Chapel Hill, have arrived to spend the holidays with their parents in this city.

Dr. and Mrs. John D. Humber of San Francisco, Calif., will arrive this afternoon to spend the holidays with their parents, Mr. and Mrs. R. L. Humber, and Mr. and Mrs. E. B. Higgs.

Miss Alice Critcher, who is teaching in High Point, is at home for the holidays.

DR. C. L. OUTLAND RETURNS FROM RALEIGH AFTER ATTENDING MEET

Dr. C. L. Outland returned last night from Raleigh where he has been for the past few days attending a Health Officers' Institute, which was given under the direction of the State Board of Health. The work was in charge of Dr. Moeck, a specialist in

Public Health Administration. One of the main subjects discussed was the prevention of Diphtheria by the toxin-anti-toxin method, and also by practical demonstration of the value of the Schick test to determine whether or not a child is susceptible to typhoid. Dr. Outland says that at an early date Schick testing will be started in Pitt County.

CHRISTMAS CANTATA MEMORIAL BAPTIST CHURCH SUNDAY P. M.
A Christmas Cantata "The World's Redeemer" will be presented by the choir of the Memorial Baptist church Sunday evening at 7:30 o'clock. The public is cordially invited.

Those taking part in the Cantata are Mrs. Morton, Mrs. Cater, Miss Ernestine Forbes, Messrs. W. T. Lipscomb, Jr., E. E. Rawl, and W. W. Lee. Mrs. J. I. Fleming is organist and director.

MR. W. E. SMITH AND MISS HELEN MATTOCKS ENTERTAINS JR. B. Y. P. U.

Mr. W. E. Smith, president of the Senior B. Y. P. U. of the Immanuel Baptist church and Miss Helen Mattocks, leader of the Junior B. Y. P. U., entertained the members of the Junior B. Y. P. U., last evening at a delightful Christmas party in the Sunday School rooms. The rooms were attractively decorated with holly, Christmas wreaths, and other Christmas suggestions.

Upon arrival the twenty guests were given a cordial welcome by the host and hostess.

The most enjoyable feature of the evening's entertainment was the Christmas tree, from which each guest received a stocking and a gift. An enjoyable hour was spent in eating the contents of the stockings and telling Christmas stories.

RESOLUTION OF RESPECT TO FRANKLIN D. FOXHALL

Whereas the Tobacco Board of Trade, of Greenville, in a special session has learned of the death of Franklin D. Foxhall, one of its charter members, and desirous of expressing its appreciation of his life, service, and association with the Board of Trade, and

Whereas the said F. D. Foxhall was a member of the Tobacco Board of Trade from its inception and has for thirty years or longer been engaged in the tobacco warehouse business in Greenville and for that period of time has been associated with those who began the market, and was a large factor in making the market, and

Whereas F. D. Foxhall, was respected and honored as a true, clean, and upright gentleman by all who knew and were associated with him in business or otherwise.

Therefore, be it resolved by the Tobacco Board of Trade:

First: That we, the Tobacco Board of Trade, as an organization and as individuals hereby express the feeling of our great loss and sorrow at the death of his said member.

Second: That we express to his widow and his family our sympathy.

Third: That copies of these resolutions be furnished his widow and the newspapers.

C. W. SCHUFF,
W. Z. MORTON,
R. B. SUGG,
Committee.

NOTICE TO CONTRACTORS.

Sealed bids for the grading and structures on Project "E," Ayden to Ridge Springs, 4.1 miles, will be received by the Pitt County Highway Commission at Greenville, N. C., until 12:30 p. m. December 22nd 1924 when they will be opened and read. No bids will be received after the above hour. The work will consist of



Christmas Cheer Smith Electric Co.

Let National Mazda Lamps help make this Christmas bright and cheery for you. Make sure that you have no empty sockets. See that the proper National Mazda Lamp is in every one of your lighting fixtures and portables.

GIVE LIGHTING GIFTS FOR CHRISTMAS

OPEN EVENINGS

the following approximate quantities:

- Grading:
 - Clearing: 2.5 acres.
 - Grubbing: 1.5 acres.
 - Drainage Ditches 355.0 Cu. Yds.
 - Common Excavation 8,260 Cu. Yds.
 - Borrow Excavation 9,200 Cu. Yds.
 - Hauling and Laying Pipe as follows:
 - 355 Lin. Ft. 18" R. C. Pipe or 355 Lin. Ft. 18" T. C. Pipe.
 - 230 Lin. Ft. 24" R. C. Pipe or 320 Lin. Ft. 24" T. C. Pipe.
 - 32.5 Lin. Ft. 30" R. C. Pipe or 32.5 Lin. Ft. 30" T. C. Pipe.
 - 65 Lin. Ft. 36" R. C. Pipe or 65 Lin. Ft. 36" T. C. Pipe.
 - 74.0 Cu. Yds. Headwalls Class "B" Concrete.

Structures:
212.0 Cu. Yds. Class "A" Concrete.
15,799 Lb. Reinforcing Steel in Place.
26,320 Lb. Structural Steel in Place.
580 Lin. Ft. Unvented Timber Piling.

Plans and specifications can be had by applying to the office of the Engineer at Greenville, N. C. Plans will be completed by Wednesday the 14th of December.

Certified check for the sum of \$200.00 will be required to accompany each bid. If contractor bids on both Structures and Road Way check for \$400.00 should accompany bid.

Contractors may bid on all or any part of the above work.

The right is reserved to reject any or all bids or to accept any bid deemed best for the county.

By order of the Pitt County Highway Commission.
W. H. DAHL, JR.,
Chairman, Greenville, N. C.
W. B. ROGERS, JR.,
Engineer, Greenville, N. C.
Dec. 15, 1924. 15 every day this w.

NOTICE OF SALE

Under and by virtue of the power and authority contained in that certain deed of trust made by W. E. Braxton to N. W. Galloway, trustee, of record in Book C-14 page 128, in the office of the Register of Deeds of Pitt County, North Carolina, default having been made in the payment thereon, I, the undersigned will offer for sale and sell to the highest bidder, for cash, at the courthouse door in Greenville, at noon, on Wednesday, December 30th, 1924, the following described property:

That tract of land adjoining the lands of Howell Hudson, H. E. Edwards, D. S. Tucker and Peter Branch, containing 110 acres more or less, and known as the home place of the late J. G. Laughinghouse, and being the land upon which he resided when he died, and being all the lands he owned at the time of his death.

This November 28th, 1924.
N. W. OUTLAW,
Trustee.

Arthur P. Corey, Atty. 28 Htw4ks

ADMINISTRATOR'S NOTICE.

Having qualified as administrator of the estate of Cherry Blount, deceased, late of Pitt County, North Carolina, this is to notify all persons having claims against the estate of said deceased to exhibit them to the undersigned at Greenville, North Carolina, on or before the first day of December, 1924, or this notice will be pleaded in bar of their recovery.

All persons indebted to said estate will please make immediate payment. This December 1, 1924.
JAMES L. EVANS,
Administrator of Cherry Blount.
L. Htw4ks

LAND SALE.

By virtue of the power of sale contained in that certain deed of trust, executed and delivered by W. L. Melayhorn and wife to James L. Little, trustee, on the 2nd day of January, 1918, which deed of trust was duly recorded in the office of the Register of Deeds of Pitt County in Book P-12, page 104, the undersigned trustee will sell for cash, before the court house door in Greenville, on Monday, the 29th day of December, 1924,

the following described lands:

FIRST TRACT: Situated in Georgetown township, adjoining the land of James Day on Jonathan Lane, J. A. Smith and other, beginning in the center of the road, James Dawson's corner and runs with said Lane, Dawson's line N. 13 1/2 E. 104 1/2 poles to his corner; thence with said Dawson's line S. 79 1/2 E. 131-14 1/2 poles to his corner; thence with Lane's line S. 6 1/2 W. 23 1/2 poles to J. A. Smith's corner; thence with said Smith line M. 79 to W. 61-11-25 poles to his corner; thence with said Smith's line S. 23 1/2 W. 79 1/2 poles to his corner; thence with said Smith's line N. 43 1/2 W. 34 1/2 poles to his corner; thence with said Smith's line S. 24 1/4 W. 79 poles to the road; thence with road N. 13 1/2 E. 13 poles; thence with road N. 12 1/4 W. 14 poles; thence with road N. 2 1/2 W. 6 poles; thence with road N. 45 W. 55 1/2 poles to the beginning, containing 31 1/2 acres, more or less.

SECOND TRACT: Situated in Georgetown township, adjoining the lands of J. A. Smith, E. Lang and others, beginning in the center of road near or at J. A. Smith's corner and runs with said Smith's line N. 32 1/2 E. 112 poles to E. Lang's corner; thence with E. Lang's line N. 27 1/2 E. 40 poles to a stake; thence S. 31 1/2 poles to the road; thence with the road N. 22 W. 6 1/2 poles; thence with the road N. 30 1/2 W. 24 1/2 poles to the beginning, containing 30 acres, more or less.

THIRD TRACT: Also another tract adjoining the lands of W. L. Melayhorn, Jonathan Lane, J. W. Quinberry & Bro., and J. C. Coan, containing 40 acres, more or less. Also one acre in at hard bed next to Quinberry & Bro's land.

For an accurate description of these lands reference is hereby made to said deed of trust.

Said sale is made for the purpose of satisfying the indebtedness incurred in said deed of trust, default having been made in the payments.

This November 28th, 1924.
JAMES L. LITTLE,
Trustee.

F. G. James & Son, Atty. 29 Htw4ks

NOTICE OF LAND SALE.

Under and by virtue of that deed of trust executed to me by K. E. Belcher and wife Lucy Belcher, on the 29th day of January, 1921, and recorded in the office of the Register of Deeds of Pitt County, in Book Y-13, at page 223, I shall offer for sale, at public auction, to the highest bidder, for cash, at the court house door, in the Town of Greenville, on Monday, the 22d day of December, 1924, at 12 o'clock noon, the following described parcel of real estate, being a long and situated in the Town of Fayetteville, county of Pitt, and State of North Carolina, to-wit:

Beginning on the North side of Home Avenue and the intersection of Fields Street, running with Fields Street 240 feet; thence at right angles and parallel with Home Avenue running 150 feet; thence at right angles and parallel with Fields Street running 240 feet to Home Avenue; thence with Home Avenue 150 feet to the beginning, together with all buildings standing and improvements upon said property.

This November 14th, 1924.
W. R. WILLIAMS, Trustee.
Allison Drive, Atty. 22 Htw4ks

NOTICE OF SALE.

Under and by virtue of the power and authority contained in that certain deed of trust from J. A. Mills, Sr., and wife, Rebecca Mills to J. L. Simmons, Trustee, dated October 29, 1921, recorded in Book C-14, at page 502, Pitt County Registry, default having been made in the payment of the indebtedness thereby secured, the undersigned will offer for sale, on Friday, January 2, 1925, between the hours of 12 m. and 1 p. m., offer for sale to the highest bidder for cash at the court house door in the city of Greenville, Pitt County, North Carolina, the land and premises described in said deed of trust, more particularly described as follows, to-wit:

Beginning at the corner of lot 1, a large pine on the line of a branch and runs with lot No. 1, south 1/2 and 104 1/2 poles to a stake; thence south 1/2 west 1/2 to a stake, second corner of lot No. 1, thence south 1/2 west 1/2 to a stake, corner of lot No. 2, thence with that lot north 1/2 west 1/2 to a stake, bounded by said pine; thence with another line of lot No. 2, and lot No. 3, north 1/2 west 1/2 to a stake in a field, corner of lot No. 7 in the line of lot No. 3, thence with lot No. 3 west 1/2 west 1/2 to a stake on a branch, corner of lot No. 3, thence down the run of said branch to the beginning, containing three, one acre, more or less, being lot No. 2 in the division of the late J. J. Hardee, land as recorded in the Clerk's office of Pitt County, the life estate of J. J. Hardee being conveyed and being the same land conveyed to C. H. Mills by Raymond Hardee, by deed dated October 23rd, 1917, and recorded in Book C-1, page 588, Pitt County Registry.

This 2nd day of Dec., 1924.
J. L. SIMMONS,
Trustee.

LAND SALE.

By virtue of the power of sale contained in that certain deed of trust executed and delivered by Daniel Daniel and wife, Susan Daniel to J. B. James, trustee, on the 25th day of January 1918, which deed of trust was duly recorded in the office of the Register of Deeds of Pitt County in Book M-2, page 11, the undersigned trustee will sell at public auction for cash, before the court house in Greenville on

Monday, December 29th, 1924, the following described lands, to-wit:

FIRST TRACT: Being a part of the H. W. Brown land and being at the corner of the W. E. Lewis and J. E. Warren land; thence running east with Warren's line to J. A. Taylor's line; thence north with said line to a ditch, Giles Hardee's line; thence with said ditch to a bridge in a path; thence with said ditch and path southwest to the James line; thence south with James line to the beginning. Containing 30 acres, more or less.

SECOND TRACT: Beginning at Jesse Andrews' corner and running north with his line to the line of the Evelyn Lumber Company and W. E. Lewis; thence with their line 70 yards to an iron stake; thence south

30 yards to an iron stake; thence south

30 yards to an iron stake; thence south

30 yards to an iron stake; thence south

30 yards to an iron stake; thence south

30 yards to an iron stake; thence south

30 yards to an iron stake; thence south

30 yards to an iron stake; thence south

30 yards to an iron stake; thence south

30 yards to an iron stake; thence south

30 yards to an iron stake; thence south

30 yards to an iron stake; thence south

30 yards to an iron stake; thence south

30 yards to an iron stake; thence south

30 yards to an iron stake; thence south

30 yards to an iron stake; thence south

30 yards to an iron stake; thence south

30 yards to an iron stake; thence south

30 yards to an iron stake; thence south

30 yards to an iron stake; thence south

30 yards to an iron stake; thence south

30 yards to an iron stake; thence south

30 yards to an iron stake; thence south

30 yards to an iron stake; thence south

30 yards to an iron stake; thence south

30 yards to an iron stake; thence south

30 yards to an iron stake; thence south

30 yards to an iron stake; thence south

30 yards to an iron stake; thence south

30 yards to an iron stake; thence south

and parallel with the first line about 200 yards to the Briley line; thence to the beginning, containing 5 acres of wood land.

Said sale is made by reason of default having been made in the payment of the indebtedness secured in said deed of trust, and the holders of said indebtedness requesting sale.

This November 28th, 1924.
J. B. JAMES,
Trustee.

F. G. James & Son, Atty. 25 Htw4ks

PUBLICATION OF SUMMONS

North Carolina, Pitt County, In the Superior Court

W. C. Chance, Administrator of the Estate of James Hardee, deceased, Nannie Chance, Ada Short, Joe Hardee, Charlie Hardee, and Mahala Hardee, vs.

Henry Hardee and James Hardee. The defendant Henry Hardee and James Hardee will take notice that a special proceeding entitled as above has been commenced in the Superior Court in Pitt County, North Carolina, for the purpose of obtaining an order to sell the lands of James Hardee, deceased, to make assets with which to pay the indebtedness of the said James Hardee, deceased, and the said defendants will further take notice that they are required to appear at the office of the clerk of the Superior Court of Pitt County, North Carolina on Thursday the 18th day of December 1924 in the court house in said county of Pitt and State of North Carolina and answer or demur to the petition filed this day in this cause or the plaintiff will apply to the court for the relief demanded in said petition.

This 17th day of Nov. 1924.
J. P. HARRINGTON,
Clerk Superior Court Pitt County.
19 Htw4ks

Christmas Gifts
Don't Make Your Final Selection of Presents Until You Visit the

Gift Shop
In Singer Sewing Machine Office. Just received an additional line of attractive novelties.

PRACTICAL GIFTS FOR Christmas

GET THEM AT The Dry Goods Shop

Dickinson Avenue

Notice!

Is hereby given that the Taxpayers of Pitt County can take their tax notices to either of the different banks of the county, deposit the amount of their taxes and receive a receipt from the bank for their tax, thereby saving the trouble of having to come to the Sheriff's Office to pay their taxes. Please come in and pay your taxes as early as possible. We will appreciate it very much if you will come or take it to your bank at once.

Yours truly,

A. C. Jackson

SHERIFF PITT COUNTY

LET US SUGGEST—
A box of his favorite Cigars—
A Carton of his favorite Cigarettes—
A fine Pipe—
Just received—our Holiday shipment of
NORRIS EXQUISITE CANDY
In 1—2—3—5 Pound Boxes.
"Remember Everybody Likes Candy."
PROCTER CIGAR AND NEWS STAND
We Will Deliver or Post for You.

Gifts for Christmas
Electrical Gifts for All
Most beautiful of all Gifts that you can select. Electrical pleasures all and proves a most lasting remembrance of your best Christmas thoughts. Our selection will please you.
Especially notable are our Fixtures, Lamps, Electric Irons, Curling Irons, Waffle Irons, Hot Plates, Toasters, Percolators, Flash Lights, Table Stands, Heaters, Vacuum Cleaners and Rayco Projectors.
ELECTRIC SERVICE & SUPPLY CO.
Dickinson Ave. Phone 605

Say It With A Tax Receipt
FOR YOUR TOWN TAXES
J. O. Duval
Town Tax Collector

SAY IT WITH A "GOLF" PRESENT
For a suitable present for "Him," make it something in the "Golf" line. I have a complete collection from which to make your selection.
L. A. NEWNHAM

CHRISTMAS
FRUITS — VEGETABLES
NUTS AND CANDIES
Shelled and Unshelled Pecans,
Shelled and Unshelled Walnuts,
Shelled and Unshelled Almonds,
Shelled and Unshelled Hazel Nuts,
Shelled and Unshelled Brazil Nuts,
Sweet Florida Oranges, 75c peck as long as they last.
Anything in Fruits, Candies, Nuts and Vegetables.
Do Your Christmas Shopping Here.
Curry's Fruit Store
Dickinson Ave., Phone 371
SUBSCRIBE TO THE REFLECTOR



When home is mentioned we always think of a devoted wife or mother.

In fact home is one of life's highest ideals.

If you are a man reading this you should be earnestly thinking how you can give your family a home of its own.

If you are a woman, you should be planning how you can help to make the dream of home come true.

Home ownership isn't beyond the average family under our plan.

After the savings invested with us have totalled to a moderate amount, you are in line for a home loan on terms that are about the same as rent.

Without any obligation whatever, we would like to talk it over with you.

THE HOME BUILDING & LOAN ASSOCIATION

105 Evans St. Phone 49

Today -- WHITE'S THEATRE -- Today

JACK HOXIE IN "GALLOPING ACE"—A 100 per cent Western. Comedy, "Should Landlords Live?"—Also "TEN SCARS MAKE A MAN"—10 and 25c

An appealing story of Mother-Love Against a background of the "Big City." "The City That Never Sleeps" MONDAY—With Ricardo Cortez, Louise Dresser and Kathlyn Williams. Lower Floor 35c, Bal. 25c, Chil. 10c

THURSDAY, CHRISTMAS—GLORIA SWANSON IN—"HER LOVE STORY"—BY MARY ROBERTS RINEHART

Markets

(Furnished by J. W. Cobb) LIVERPOOL COTTON Middling 1333; Good Middling 1383; Receipts 17,000 of which 12,700 were American. Sales 3,000 of which 1,800 were American. The market closed Jan. 1300; Mar. 1315; May 1324; July 1326; Oct. 1294; Dec. 1309.

Table with columns: Open, High, Low, Close. Rows for Jan, Mar, May, July, Oct, Dec. Market closed quiet; spots off 5. Middling 2375.

Table with columns: Open, High, Low, Close. Rows for Jan, Mar, May, July, Oct, Dec. Closed quiet, spots off 5; mid. 2395.

GRAIN MARKET

Table with columns: Open, High, Low, Close. Rows for WHEAT and CORN. Includes OATS data at the bottom.

WEEK-END FIGURES

Preliminary foreign crop estimates in bales of 500 pounds: India 5,46,000 vs. 4,287,000. Egypt 1,232,000 vs. 1,213,000. Brazil 600,000 vs. 719,000. Total 3 countries 6,961,000 vs. 6,179,000.

LAND SALE

By virtue of a decree of the Superior Court of Pitt county, made in Special Proceedings No. 2583, entitled, "W. W. Colville et als. vs. Russell Buck et als." the undersigned commissioner will sell for cash at public auction, before the court house in Greenville on Monday, the 19th Day of January, 1925, the following described tract of land:

"THE CITY THAT NEVER SLEEPS"—WHERE IS IT?

At White's Theatre of course, it's James Cruze's newest Paramount production and features Ricardo Cortez, Louise Dresser, Kathlyn Williams and Virginia Lee Corbin. The story is by Leroy Scott. Walter Woods and Anthony Coldewey wrote the scenario.

SALE OF REAL ESTATE

Under and by virtue of power of sale contained in that certain mortgage executed on the 9th day of May 1913 by Isom Richardson and wife Nanny Richardson to B. T. Cox, same being of record in Book E-10, page 558 of the Pitt county registry, default having been made in the payment of same, the undersigned will offer for sale, for cash, before the court house door in Greenville on Saturday, the 3rd day of January, 1925, the following described property:

Situated in Winterville township on the east side of the A. C. L. railroad, about 1-2 mile south of Winterville. Beginning at a stake in the corner of Isaac Richardson's land, thence south with the railroad 60 yards, thence east with Charlie Richardson's line to J. B. Carroll's line, thence north with said J. B. Carroll's line to a stake, thence west with Isaac Richardson's line to the beginning, containing 3-4 of an acre more or less.

December 2, 1924. B. T. COX, Mortgagee. Sam O. Worthington, Atty.

NOTICE OF DISSOLUTION

To whom it may concern: This is to certify that the firm of H. L. Hodges & Co., composed of H. L. Hodges and W. H. Dail, Jr., doing business on 5th street in the town of Greenville, N. C., has been this day dissolved by mutual consent of said parties. H. L. Hodges buying W. H. Dail's interest in the firm of H. L. Hodges & Co. All accounts due the firm of H. L. Hodges & Co. should be paid to H. L. Hodges, and all outstanding obligations of said firm are assumed and will be paid by H. L. Hodges, who will continue to conduct the business at the same place.

SALE OF VALUABLE FARM PROPERTY

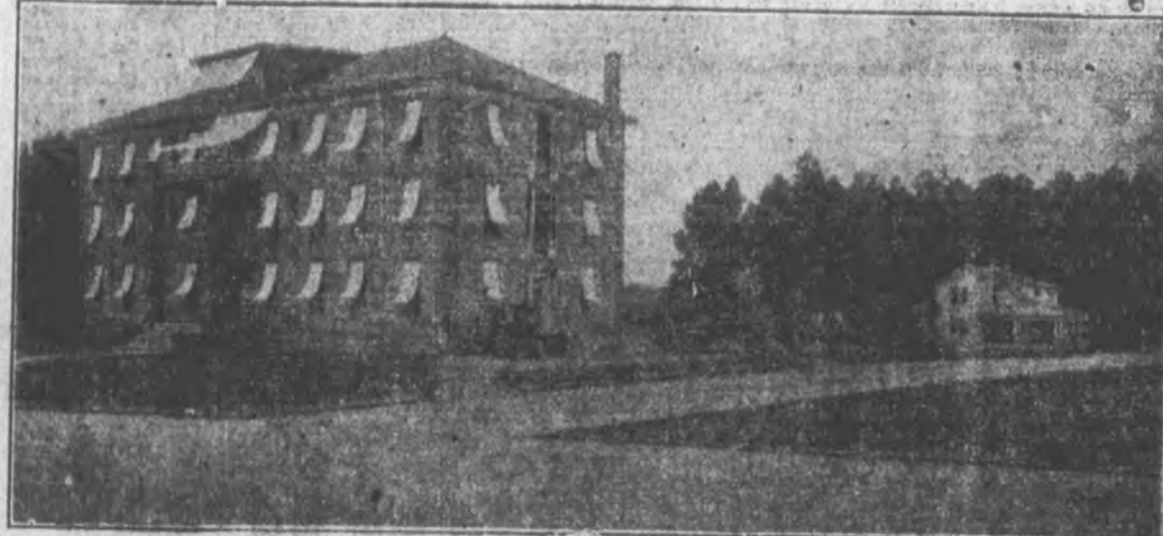
Under and by virtue of the authority conferred upon us in a deed of trust executed by Mrs. Dora V. Warren (Widow) on the 3rd day of April 1923, and recorded in book of mortgages B-15, page 240, of Pitt county, we will on Saturday the 17th day of January 1925, at 12 o'clock noon at the court house door in Greenville, sell at public auction for cash to the highest bidder the following land, to-wit: That certain tract or parcel of land situated in Falkland Township, Pitt county, N. C., bounded on the north by Jug Branch, on the east by the Greenville-Falkland county road, on the south by the lands of Ivey Foreman and the Branch, and on the west by the lands of Walter Johnson, "The Gay Farm" and Jug Branch, and more specifically described as follows: Beginning at the bridge on the Greenville-Falkland county road, and runs with said road as follows: South 33 west 570; south 7-15 west 383 feet; south 24 east 374 feet; south 43-15 east 300 feet; south 40-30 east 200 feet; south 30 east 548 feet; south 23-15 east 470 feet; south 24-30 east 1896 feet south 11-30 east 484 feet to Ivey Foreman corner, thence with

the line of Ivey Foreman South 71-30 west 1312 feet to corner in branch, thence the various courses of the branch as follows: South 18 west 227 feet; south 6 east 176 feet; south 20 east 219 feet to corner in Jug Branch; south 44 west 161 feet; south 62-20 west 125 feet; south 56-15 west 125 feet; then south 25 west 38 feet to gum in branch, then north 56-25 west 759 feet to iron stake, then with the line of the Walter Johnson "Gay Farm" north 33-35 east 2062 feet to iron stake on county road, then south 64-30 east 135 feet to bridge on county road, thence the various courses of Jug Branch as follows: North 9 west 165 feet; north 47-30 west 100 feet; north 34 west 113 feet; north 4 west 100 feet; north 20-30 west 117 feet; north 6-30 west 75, north 5-30 east 100 feet; north 15 west 100 feet; north 15-30 east 100 feet; north 27-30 east 100 feet; north 7-30 east 100 feet; north 20-15 west 95 feet; north 39 west 100 feet; north 4 west 100 feet north 21 west 100 feet; north 53 west 100 feet; north 43-30 west 100 feet; north 60 west 100 feet; north 37-30 west 141 feet; north 71-30 west 118 feet; north 17 west 114 feet; north 25-15 west 138 feet; north 29-30 west 196 feet; north 25-45 west 70 feet; north 65 west 155 feet; north 17-15 west 249 feet; north 38-30 west 160 feet; north 29 east 120 feet; north 21 west 113 feet; north 20-15 east 351 feet; north 16-30 east 151 feet; north 77 east 200 feet; north 27-30 east 158 feet; south 67-30 east 125 feet; south 79-30 east 134 feet to bridge on the Greenville-Falkland county road, the beginning, containing 80 acres by actual survey made by Henry L. Rivers, Civil Engineer, March 1923.

This sale is made by reason of the failure of Mrs. Dora V. Warren (widow) to pay off and discharge the indebtedness secured by said deed of trust to the North Carolina Joint Stock Land Bank of Durham. This the 10th day of Dec. 1924. FIRST NATIONAL TRUST CO., Trustee. 19 1tw4wks Durham, N. C.

LET HAPPERSBERGER

Repair your watch and you'll always be on time Located Speight Cotton Office If a Boy loves a Girl, that's His business; If a Girl loves a Boy, that's Her business; If they love each other, that's their business. Cleaning and Pressing is our Business. Give us a trial is all we ask City Tailoring Co. Phone 584



PITT COMMUNITY HOSPITAL AND NURSES HOME

Open for patients and class nurses after June 1st, 1924. Modern hospital construction, equipment and service. Capacity forty beds. Private rooms with bath. Distinct Medical and Surgical Services. Two whole time physicians in attendance. Laboratory for quick service to doctors. A superintendent nurse, a Night superintendent nurse, a Surgical superintendent nurse, a graduate nurse's registry. VISITING HOURS—Morning 10 to 12, afternoon 2 to 5, evening, 7 to 9.

GIVE HER CANDY

We have just gotten in a fresh shipment of attractively boxed Candies. A very appropriate gift for the most fastidious.

HORNE-STATON DRUG CO. Phone 186—Prompt and Efficient Service

Grand Theatre KINSTON, N. C. FRIDAY NIGHT, DEC. 26

Brightest, Danciest, musical hit of the year—Brimful of romance and ragtime-jingling music-hurricane dancing and pretty girls.

Edith Stevenson, well-known young lady of Kinston is a member of the company.

Advertisement for 'MY CHINA DOLL' featuring Barbara Bronell and the Brilliant Company. Includes text: 'LE COMTE & FLEISHER PRESENT THE GORGEOUS SPECTACLE OF BEAUTY & FASHION' and 'A SENSATION IN MUSIC, SONG AND DANCE'.

PRICES:—plus tax—Mail orders now. 75c, \$1.00, \$1.50 and \$2.00. Seats on sale Tuesday, 10 a. m., Grand Box Office. THIS SHOW DOES NOT PLAY GREENVILLE

Wants

CONKLIN'S, ALL OUR COALS and weights are guaranteed. Ask anyone that uses our coal. Our customers make our sales. 20-11

BEST QUALITY VEAL AND BEEF at all times. Call 82-34. Greenville Market. 19 6t

FORT RENT TWO STORY HOUSE on 8th street, desirable location. Apply P. O. Box 339. 18, 19, 20, 22p.

FOR SALE—LIMITED AMOUNT of milk deliveries made morning and evening. Phone 245-J. 136tp

FOR RENT—5 ROOM BUNGALOW bath, garage, large garden. 8th street. Possession February 1st. \$45 W. B. Wilson. 15tf

BUY YOUR CORNED HAM FOR Christmas from us. Call 82 for any cut of fresh native pork. Greenville Market Co. 12 6t

FOR RENT—TO RIGHT PARTIES, four newly painted furnished bed rooms upstairs, bath on same floor. Board if desired. Apply in person to 400 E. 8th street. 17 tf

SEMI-ANTHRACITE EGG COAL once used always used. Phone Conklin's, 375W. 20-11

CABBAGE PLANTS Thorough bred Frost Proof Early Jersey Wakefield and Charleston Wakefield Cabbage Plants for sale at the following prices: Twenty-five cents per one hundred. Three hundred for 60c. Six hundred for \$1. One thousand to ten thousand and \$1.25 per thousand. Ten thousand and over \$1 per thousand. Can fill orders of any size. F. O. B. Greenville. L. C. Arthur, Greenville, N. C.

FOR RENT—JANUARY 1st, Modern bungalow on 9th St., 6 rooms, bath and garage. Apply at this office. 19 tf

LOST—1 KEY RING CONTAINING about 12 keys, bearing a name plate of L. E. Brown. Finder return to Water & Light Office. 19 2t.

PHONE CONKLIN'S FOR SUPERIOR Red Ash, lump and egg size. 20-11

FOR RENT—TWO-STORY HOUSE on Sutton Lane. 7 rooms, 2 baths, garage. Apply to W.M. Moore. 20 2t pd

FOR RENT—OFFICES IN REFLECTOR Building. Heat and lights. Apply at this office. 1f

ATTENTION WINTERVILLE!—A resident of Winterville accepted wrong handbag on check No. 28. Please return to Cherry Hotel, Wilson, N. C., and receive his own. 19 3t

BEST CUTS OF BEEF ROAST 20-25 cents pound, roast veal 25-30 cents. Call 82. Greenville Market 19 6t

FOR SALE—DELICIOUS RAPPANNOCK OYSTERS. Strictly Cash. No deliveries. Turnage & Winslow. 21 tf

FOR RENT—7 ROOM DWELLING also bath and all modern conveniences, corner 9th and Reede Sts. F. V. Johnston. 11 tf

FOUR SALE—JERSEY AND CHARLESTON Wakefield cabbage plants. F. V. Johnston near Community Hospital. 11 tf

NOTICE—I HAVE MOVED MY OFFICE next door to my former office in the Wooten Building, next to Telephone office. S. T. Hicks. 26 tf

TWO BEDROOMS AND GARAGE for rent Jan. 1st. Mrs. J. G. Taylor. 317 E. 8th St. Telephone 554-J. 16 6tp

WE SOLICIT YOUR PATRONAGE and guarantee satisfaction. Quick and prompt service at all times. Greenville Damp Wash. N. W. and Ferrell Jackson and Paul A. Scott, cleaning and pressing done on short notice. Office phone 602; residence phone 488-J. 7tf

CALL PHONES 475-660 FOR NICE dressed chickens, fries and nice lamb and veal chops, also pork sausage, country style daily. Give us a trial. Williams & Waldrop. 17 tf

CASH PRICES, SWEET POTATOES \$1.00, gun shells, white powder 90c, and \$1, black powder 75c, English walnuts 40c, 2 lbs. for 75c. Butter nuts 20c per lb. Select raisins 1 lb. package 25c. Select oranges 25 per doz. 40 and 50c. oranges \$3.65 per box, raisins, per box \$3.25. Candy of all kinds 20 to 75c per lb. W. E. Warren. 17 6t

FOR RENT—THREE FURNISHED rooms for light housekeeping to couple without children. Hot bath included. Located within two blocks of five points. Call phone 547. 17 8t

CONKLIN'S COALS IN STOCK—Smokeless Low Volatile. New River large lump for stoves or grates. New River Rom for furnaces. Semi-Smokeless Medium Volatile. Superior Red Ash large lump for grates or stoves. Superior Red Ash egg lump stove or furnaces. Semi-Anthracite egg for furnaces, stoves or grates. Splints High Volatile. Snow Ball, large hard block for stoves or grates, soft structure large lumps stoves or grates. Soft structure, egg for stoves, grates or furnaces. Call us for expert advice on your heating problems. Phone number 375W, Evans St., Norfolk & Southern tracks. 20-11

"COLLEGE VIEW" Lot 50 x 110 ft. Water, lights, sewer. Near Mrs. Alice Keel and all schools. \$1500. Terms. L. J. SMITH Insurance and Real Estate. No 306 Evans St., Phone 303.

R. T. COX JEFFERSON STANDARD LIFE INSURANCE CO District Agent

Let the Cafeteria Solve Your Eating Problems. Good foods on order at all times. Hot Rolls and Pies A SPECIALTY

CONKLIN'S COAL—WOOD Phone 375-W Evans St. & N. S. Track

Advertisement for Scientific Plumbing featuring a cartoon character and text: 'WE KNOW YOU'LL BE SATISFIED—ONCE OUR PLUMBING YOU HAVE TRIED'.

Congleton's Cattle Plumber Scientific plumbing is the sort of profession that we're well versed in. We can plan for your home a heating system or sanitary drainage that will add to the health and comfort possibilities of your place of residence. Why not get in touch with us? Phone L. G. CONGLETON 117 Cotanch St. Phone 650 Next to Exide Battery Service Co.

Don't Miss It! - Valuable Woods-Land

TO BE SOLD AT AUCTION— MONDAY, DECEMBER 22, 1924 —AT 10:30 A. M. PART OF THE MOORE LAND, now owned by A. F. and R. L. Brooks, located on Greenville-Grimesland hard surfaced road, just across the road from Major Mills. This tract contains 32 and 2-10 acres with an abundance of wood and quite a bit of mill timber. Just 15 minutes ride from Greenville. TERMS OF SALE—One-third cash, balance to become due and payable in 1, 2, 3, 4, and 5 years after date of sale with 6 per cent interest on deferred payments. SALE TO BE CONDUCTED ON PROPERTY RAIN OR SHINE. DON'T FAIL TO ATTEND

N. O. WARREN SELLING AGENT FOR A. F. & R. L. BROOKS