



# THE DAILY REFLECTOR

D. J. WHICHARD, Editor.

EVERY AFTERNOON [except Sunday

Entered at the Post Office at Greenville, N. C., as Second-Class Mail Matter.

### SUBSCRIPTION RATES.

One year \$3.00  
One month .25  
One week .10

Delivered in town by carriers without extra cost.

Advertising rates are liberal and can be had on application to the editor or at the office.

We desire a live correspondent at every Postoffice in the county, who will send in brief items of news as it occurs in each neighborhood. Write plainly and only on one side of the paper.

THURSDAY, JULY 27, 1899.

The Atlantic Coast Line is credited with furnishing the best "Jim Crow" car service of any railroad in the State. The service some of the railroads give is really a sham.

The committee investigating the management of the agricultural department and the penitentiary are making some bad discoveries. There has been gross misappropriation of funds. J. L. Ramsay, who was Secretary of the Board of Agriculture, is a star witness at the investigation.

Some of our exchanges are raising their voices against the practice of bicyclists taking children on the front of their wheels when they ride. The Asheville Citizen says "it should be stopped by law. If an individual of mature years wants to ride a wheel such individual has the right to do so, but no one has the right to take a child too young to realize its danger, and therefore, too young to object, and subject it to the peril of a bicycle ride." The Charlotte Observer mentions the man who rocks the boat, he who blows down the muzzle of a gun, and he who rides a bicycle with a baby in front of him, as all belonging to the same class.

Bonds issued by North Carolina towns and cities have brought surprisingly high prices lately. Money is evidently cheaper than it has been in years, perhaps cheaper than it ever has been. Brokers bought Raleigh bonds at a price netting them considerably less than four per cent. interest. This indicates that it is becoming more difficult for a man to acquire enough money to retire upon. Time was when six per cent could be readily had upon large investments. Now the investor of \$100,000 considers himself fortunate if he so places his money that he can get three and a half. That is to say, that whereas \$40,000 was a sufficient sum for a competence one must now have \$80,000. Perhaps, too, the general demand for city bonds indicates a growing decrease of faith in stocks etc. Men are looking for certainties. Stocks go up and down like mercury. At any rate these recent North Carolina sales indicate that some of our towns have splendid credit, notwithstanding the epidemic of repudiation that broke out in our State two years ago.—Biblical Recorder.

Don't Tobacco Spit and Smoke Your Life Away. To quit tobacco easily and forever, be magnetic, full of life, nerve and vigor, take No-To-Bac, the wonder-worker, that makes weak men strong. All druggists, 50c or \$1. Cure guaranteed. Booklet and sample free. Address Sterling Remedy Co., Chicago or New York.

## HEYLYN'S COSMOGRAPHY.

Work of Which Only Two Copies Remain.

An Old Geographical History of the World—its Most Interesting Part Relates to America.

A Boston paper recently announced the sale of a copy of Heylyn's Cosmography, published in 1677, and stated that it was the only copy of the work extant. This assertion, however, is not true, for Mr. E. A. Kent, of the firm of Kent & Stuchfield, of this city, has a copy of this valuable work in an excellent state of preservation. It was given him by his father, and is a valued heirloom in the family.

The book, as its name implies, is a geographical history of the world, written by Peter Heylyn and published in London, according to the title page, 220 years ago, by Andrew Clark for Philip Chetwind and Anne Seile. It is a large, strongly bound volume, printed in old-fashioned English, and divided into four books.

The first book contains the chirography, and history of Italy, the Alpine provinces, France, Spain and Britain, with the isles thereof; the second book of Belgium, Germany, Denmark, Swethland, Muscany, Poland, Hungary, Dalmacia, Dacia, Greece, with the isles thereof; the third book Greater and Lesser Asia and all principal provinces, kingdoms seas and isles; while the fourth and last book relates to Africa and all the principal kingdoms, provinces and isles, and America. The spelling of the above names is given as in the book.

The most interesting portion of the work is that relating to America, of which comparatively little was known at that time. In the opening chapter he bounds it as follows: America, the fourth and last part of the world, is bounded on the east by the Atlantic ocean and Virginian seas, by which it is parted from Europe and Africa, which seas the mariners call the Mare Yel Noordt; on the west by the Pacific ocean, which mariners call Mare Del Zur, which divides it from Asia; on the south by what is a part of Terra Australis Incognita, from which it is separated by a long and narrow strait called the Streight of Magellan. The north bounds of it hitherto not so well discovered that we can certainly affirm it to be island or continent."

It will be seen by the above that Australia was believed to reach to the Straits of the Magellan.

The maps, which are dated 1663, are very complex and covered with a multiplicity of names. The contour of South America is given very accurately, but that of North America is scarcely recognizable. The Massachusetts, and Virginia, and Florida coasts are fairly good and many of the names of capes, rivers and towns are the same which they now have. However, the Gulf of St. Lawrence is shown to extend from the ocean along the northern edge of New England to a point about where Chicago now stands, and here nearly joins the southern point of Hudson's bay. The great lakes are not designated. Santa Fe, N. M., is placed on about the same latitude as New England, while California is the name given to what is now known as Lower California, and is represented as a great island, its northern end extending up into the Terra Incognita.

Heylyn gives the general name of Peruana to the northern and Mexicana to the southern continent. His maps display a tendency to recklessness in the profusion of great rivers indicated, many as large as the Nile and flowing complacently through the mountains and valleys alike.

According to this work the scheme of a canal to cut the Isthmus of Panama was conceived at that early date. He says: "Some have thought of turning these two peninsulas into perfect islands by cutting through the isthmus. Certain it is that many have motioned to the council of Spain to do this, and thus shorten the voyage to China and Malucca."

The reasons given for not undertaking the scheme were either lack of money or danger from giving pirates too good an opportunity. With fine sarcasm Heylyn adds that probably they did not desire to endanger the lives of the few remaining natives they had permitted to live by putting them to work.

In the role of a Munchausen Heylyn is a success. He asserts that the land is "blest with such an abundance of gold that they find in many of the mines more gold than earth," and that the natives, not regarding it greedily, exchange it for iron implements. He also states that the most valuable gems are found in abundance; that the land is plentiful of spices and fruits, and such creatures as the old world never knew. Among the latter are "hogs with talons sharp as razors and the navel on the ridge of their backs." Many other equally strange and terrible creatures are described.

Of the natives he asserts that their religion is idolatry, or worse, and their chief god the devil, whom they call Menitto.

A complete chronology of the kings of Mexico from the year 1322 is given and the source of the Nile river is designated at the very point where Stanley discovered it.—Denver Times.

## SIDE COMBS NOW A NECESSITY.

They Are Made in Costly Shell and Amber for Women of Wealth.

Despite the fact that small sidecombs for the hair come in such cheap imitations at present, and are so universally worn as to be positively common, they are an absolute necessity for the prevailing mode of hair dressing. It is impossible to maintain the broad effect at the side, which is de rigueur to-day without the aid of these combs, and though a fashionable woman cries out against a fashion which can be so easily copied by her less favored sisters, from a money point of view, she has no alternative but to accept the side comb, though in such a style and at such a price as to render it inaccessible to the woman whose pocket-book is not well filled.

The large jewelry stores, whose patrons are among the Four Hundred, have showcases filled with these beautiful little combs, and importers and manufacturers are constantly devising new styles, new methods of decoration, new shapes and new materials, from gold to shell.

The latest and most popular combs are small, of shell amber, and handsomely decorated with anely cut steel. Sometimes the steel is merely a narrow band of steel; again it is arabesque, or pointed, or rounded, or a series of fleur-de-lis or clover leaves. The variety is limitless, and as they are expensive and not very easily copied in a cheaper comb, they are considered very chic.

The matron or maiden possessing a stock of unset gems has her combs of gold or silver set with precious stones, and many women who are known to be the owners of beautiful jewels and who would never be suspected of wearing an imitation gem buy the almost perfect counterparts of their real gems, which are shown in the shops, in order to preserve their more expensive combs. They urge in explanation that the combs are so apt to fall out of the soft, fluffy rolls of hair.

Amber combs just at present seem to be more in favor than the darker shell, especially for a woman with moderately light or real blond hair. The most up-to-date ones are studded with colored stones for evening wear, and if carefully chosen to harmonize or contrast with the color of the hair these brilliant ornaments are very becoming.—Chicago Tribune.

### RAG RUGS.

Instructions for Those Who Cannot Make Them.

Quite satisfactory rugs may be knit or sewn together from rags, but the most durable rag rugs are those woven with warp. Old ingrain carpets, woolen goods of any kind or description may be woven into rugs or carpeting. Excellent rag carpets are also made out of cotton. Cotton carpets of this kind are more durable than those made of wool, and they are lighter. The dust can be shaken out of them more readily, and if necessary they can be put into a wash tub and thoroughly cleaned. They are, therefore, more useful than woolen rag carpets in the kitchen. Cotton rags should be cut about an inch or three-quarters of an inch wide. It makes considerable difference whether they are cut evenly. They may be cut on the bias or straight. Almost every housewife understands how to cut rags for rugs. These special directions are given for "a subscriber" who asked for them: Woolen rags should be cut considerably narrower than cotton. Thinner woolen rags are cut about three-quarters or half an inch wide, heavy coatings narrower, though they must not be so narrow that they will pull apart. Sew rags together firmly. Good linen thread should be used to sew them, or heavy cotton.

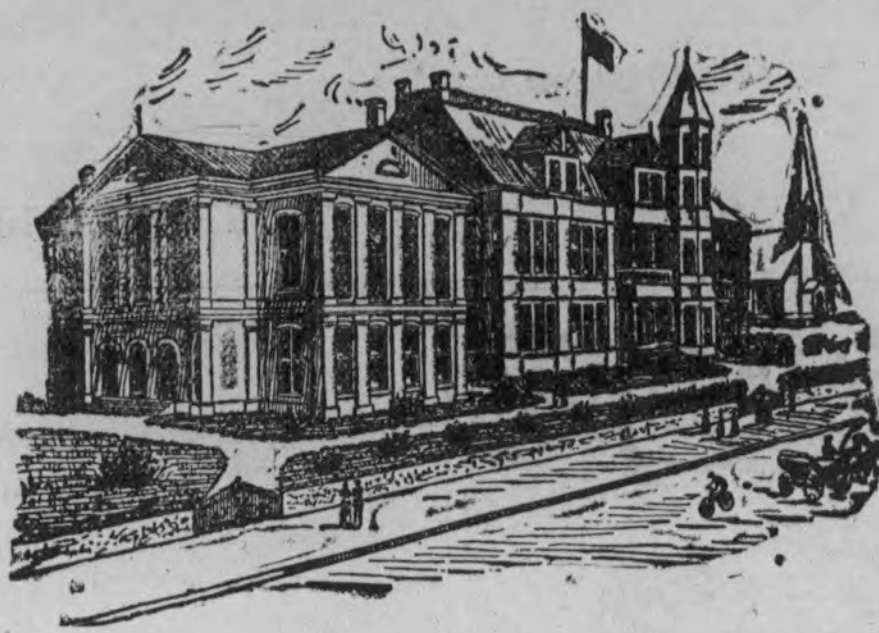
Silk rags make very pretty portieres. These curtains are woven with linen warp, and the weaver who provides this warp will charge about 65 cents a yard for his material and work. In a very short time scraps of ribbons, neckties and old silk gowns accumulate. They can be cut into rags about the width of cotton and the pounds grow. It requires about five pounds of silk rags to make a curtain a yard and a half wide by three and a half long. White ribbon and silks of light colors work in well in the "hit and miss" patterns in which the curtains are woven.—N. Y. Tribune.

### The First Royal Woman Doctor.

Marie Amelle, of Portugal, enjoys the distinction of being the first woman of royal birth who has acquired the honorable right to add the letters M. D. to the "Regina" that follows her name. After a couple of years of hard and serious study, pursued under disadvantages of no ordinary character, since every moment of a queen's time is supposed to belong to the nation, and to be taken up by the manifold duties pertaining to her lofty station, she has just succeeded in passing with flying colors the difficult examination which entitles her to practice as a physician. Empresses, queens and princesses of the blood have on many occasions distinguished themselves in connection with the nursing of sick and wounded, as well as with the organization and management of hospitals; but Marie Amelle, the daughter of the late Comte de Paris, is the first lady born to the purple to become actually a full-fledged doctor of medicine.—Philadelphia Press.

## EDUCATIONAL.

### OAK RIDGE INSTITUTE.



The Largest and Best Equipped Fitting School in the South. Classical, Scientific, Commercial. 275 students last year. North West of Greensboro, Piedmont Region, 1013 feet above sea level. State championship in Football, Baseball, and Track Athletics for many years among the preparatory schools. Terms reasonable, considering advantages and facilities offered. 95th annual session opens August 22nd. For beautiful catalogue address,

J. A. & M. H. HOLT.

### HORNER MILITARY SCHOOL

OXFORD, N. C.

The Cheapest School in the South for the advantages offered. Sends to University and College a larger per cent of its students than any other school in the State. Special course preparatory to Annapolis and West Point.

### LITTLETON FEMALE COLLEGE Littleton, D. C.

Board, Laundry, Full Literary Tuition and Library fee \$132. for the entire scholastic year. To those applying in time above may be reduced to \$112. by one hour's work per day in Industrial Department. The 17th annual session begins SEPTEMBER, 20th, 1899. For catalogue address REV. J. M. RHODES, A. M. President.

### THE UNIVERSITY OF D. C.

Widest patronage and fullest equipment in its history. Faculty 38; Students 495; 3 Academic Courses; 3 Elective Courses; 3 Professional Schools, in Law, in Medicine and in Pharmacy. New buildings, Water Works, Splendid Libraries, Laboratories, Etc.

Advanced Classes open to women. Tuition \$60 a year; Board \$8 a month. Ample opportunity for self-help. Scholarships and Loans for the needy. Free tuition for teachers. Summer School for Teachers. 24 instructors, 147 students. Total enrollment 644. For Catalogue address

PRESIDENT ALDERMAN, Chapel Hill, N. C.

### TRINITY COLLEGE.

Forty-fifth year opens Wednesday, September 6th. Largest endowment of any College in the South. Completest Gymnasium in the State. Board \$6.50 to \$10.00 per month. Loan Scholarships for worthy young men. Young women admitted to all classes. Send for Catalogue to

PRESIDENT KILGO, Durham, N. C.

—ESTABLISHED 1875.—

### S. M. Schultz,

WHOLESALE & RETAIL

Prepared buckwheat, fancy Ponce molasses, side meat, hams, shoulders, coffee, sugar, flour, tobacco, snuff, cigars, cigarettes, cheroots, Elgen butter, mountain butter, full cream cheese, macaroni, sausage, oat flakes, hominy flakes, cottonseed meal and hulls, cotton seed bought at 12 1/2 cents per bushel.

D. M. FERRY GARDEN SEEDS. STANDARD Sewing MACHINES. 100 BAGS SALT.

BEDSTEDS, BUREAUS, MATTRESSES, CHAIRS, Etc. AT ROCK BOTTOM PRICES. Come to see

SAM M. SCHULTZ Phone 55.

### The State Normal and Industrial College OF NORTH CAROLINA

Offers to young women thorough literary, classical, scientific, and industrial education and special pedagogical training. Annual expenses \$90 to \$130; for non-residents of the State \$150. Faculty of 30 members. More than 400 regular students. Has matriculated about 1,700 students, representing every county in the State except one. Practice and Observation School of about 250 pupils. To secure board in dormitories, all free-tuition applications should be made before August 1st. Correspondence invited from those desiring competent trained teachers.

For catalogue and other information address, PRESIDENT McIVER, Greensboro, N. C.

### PEACE INSTITUTE, RALEIGH, N. C.

One of the best female schools in the South, and the cheapest for advantages given. Send for catalogue. JAMES DINWIDDIE, M. A.

### Great

Reduction ON OUR SPRING LINE OF

LAWNS-PIQUES-DUCKS

Linens, White Goods &c.

COME and get some of the bargains I am offering.

R. B. JARVIS & BRO

# DIRECTORY.

## CHURCHES.

**EPISCOPAL.**—Sunday-school 9:30 a. m. W. B. Brown, superintendent. Divine service and sermon every Sunday morning and evening. Evening prayer Wednesdays at 7:30 P. M., and Litany Fridays at 10 A. M., Rev. I. A. Canfield, Minister in Charge.

**BAPTIST.**—Services every Sunday, morning and evening. Prayer-meeting Thursday evening. Rev. A. W. Setzer, pastor. Sunday-school 9:30 a. m. C. D. Rountree, superintendent.

**METHODIST.**—Services every Sunday, morning and evening. Prayer meeting Wednesday evening. Rev. N. M. Watson, pastor. Sunday school 3 p. m. W. F. Harding, superintendent.

**PRESBYTERIAN.**—Services third Sunday, morning and evening. Rev. J. B. Morton, pastor. Sunday-school 3 p. m. J. R. Moore superintendent.

**CATHOLIC.**—No regular services.

## LODGES

**A. F. & A. M.**—Greenville Lodge, No. 284, meets first and third Monday evening. R. Williams, W. M. J. M. Reuss, Sec. I. O. O. F.—Covenant Lodge, No. 17. Meets every Tuesday evening. D. D. Overton, N. G. F. M. Hodges, Sec.

**K. of P.**—Tar River Lodge, No. 93, meets every Friday evening. J. L. Fleming, C. C.; S. C. Carr, K. of R. and S.

**R. A.**—Zeb Vance Council, No. 1696, meets every Thursday evening. W. B. Wilson, R. M. R. Lang, Sec.

**Jr. O. U. A. M.**—Meets every Wednesday night at 7:30, in I. O. O. F. hall. A. D. Johnson, Councillor.

**A. O. A.**—Egyptian Council, No. 6, meets every first and third Thursday nights in Odd Fellows Hall. J. Z. Gardner Worthy Chief; D. S. Smith, Sec.

**I. O. H.**—Greenville Conclave No. 540, meets every second and fourth Monday nights in Odd Fellows Hall. W. B. Wilson Archon; D. S. Smith Sec.

## WILMINGTON & WELDON R. R. AND BRANCHES AND ATLANTIC COAST LINE RAILROAD COMPANY OF SOUTH CAROLINA. CONDENSED SCHEDULE.

TRAINS GOING SOUTH.										
DATED	No. 23		No. 35		No. 103		No. 41		No. 49	
June 4, 1899.	Daily	Daily	Daily	Daily	Sunday	Daily	Daily	Daily	Daily	Daily
	AM	PM	PM	PM	AM	AM	PM	AM	PM	PM
Leave Weldon	11 50	9 43								
Ar Rocky Mount	12 55	10 36								
Leave Tarboro	12 21	6 00								
Lv Rocky Mount	1 00	10 36	6 45	2 40	12					
Leave Wilson	1 58	11 14	7 10	6 20	2 40					
Leave Selma	2 55	11 57								
Lv Fayetteville	4 30	1 10								
Ar Florence	7 25	3 15								
			PM	AM						
Ar Goldsboro			7 50							
Lv Goldsboro						7 61	3 21			
Lv Magnolia						8 09	4 25			
Ar Wilmington						9 45	5 50			
TRAINS GOING NORTH.										
	No. 78	No. 102	No. 103	No. 32	No. 40	No. 46				
	Daily	Daily	Sunday	Daily	Daily	Daily				
	AM	PM	AM	PM	AM	PM				
Lv Florence	9 40			7 45						
Lv Fayetteville	12 30			9 45						
Leave Selma	1 56			10 54						
Arrive Wilson	2 35			11 31						
		AM		PM	AM	PM				
Lv Wilmington				7 00	9 45					
Lv Magnolia				8 34	11 19					
Lv Goldsboro			5 15	9 45	12 30					
		PM		AM	PM	PM				
Leave Wilson	2 35	5 43	11 31	1 35	1 16					
Ar Rocky Mount	3 30	6 15	12 07	11 35	1 33					
Arrive Tarboro			7 04							
Leave Tarboro	12 21									
Lv Rocky Mount	3 30		12 00							
Ar Weldon	4 42		1 00							

Train on the Scotland Neck Branch Road leaves Weldon 3 35 p. m., Halifax 4 15 p. m., arrives Scotland Neck at 5 08 p. m., Greenville 6 57 p. m., Kinston 7 55 p. m., returning leaves Kinston 7 50 a. m., Greenville 8 52 a. m., arriving Halifax at 11 15 a. m., Weldon 11 33 a. m., daily except Sunday.

Trains on Washington Branch leave Washington 8 10 a. m. and 2 30 p. m., arrive Parmele 9 10 a. m. and 4 00 p. m., returning leave Parmele 9 35 a. m. and 6 30 p. m., arrive Washington 11 00 a. m. and 7 30 p. m., daily except Sunday.

Train leaves Tarboro daily except Sunday at 5 30 p. m., Sunday 4 15 p. m., arrives Plymouth 7 40 p. m., 6 10 p. m., returning, leaves Plymouth daily, except Sunday, 7 50 a. m., and Sunday 9 00 a. m., arrives Tarboro 10 05 a. m., 11 00 a. m., Train on Midland N. C. Branch leaves Goldsboro daily, except Sunday, 7 45 a. m., arriving Smithfield 8 10 a. m., returning leaves Smithfield 9 00 a. m., arrives at Goldsboro 10 25 a. m.

Train on Nashville Branch leave Rocky Mount at 9 30 a. m., 3 40 p. m., arrive Nashville 10 10 a. m., 4 03 p. m., Spring Hope 10 40 a. m., 4 35 p. m., returning leave Spring Hope 11 00 a. m., 4 55 p. m., Nashville 11 32 a. m., arrive at Rocky Mount 11 45 a. m., 6 00 p. m., daily except Sunday.

Train on Clinton Branch leaves Warsaw for Clinton daily, except Sunday, 8 10 a. m. and 4 15 p. m., returning leaves Clinton at 7 00 a. m. and 10 25 a. m.

Train No. 78 makes close connection at Weldon for all points North daily, all rail via Richmond.

**H. M. EMERSON,** Gen'l Pass. Agent  
**J. R. KENLY,** Gen'l Manager.  
**T. M. EMERSON,** Traffic Manager

ALL KINDS OF  
**SECOND HAND GOODS**  
Bought and Sold  
on Commission.  
Cast off Clothing, Shoes and Hats a Specialty. We can dispose of the goods and return the money in 5 to 15 days. Reference exchanged.

**WE CLEAN AND PRESS SUITS FOR 50 CTS.**

Swiss cleaned, Dyed and Pressed for \$1.25. We guarantee them to look perfectly new. Ladies' Dresses cleaned 50c Cleaned and Dyed, \$1.

**HARRIS' STEAM DYE WORKS,**  
RALEIGH, N. C.

**Southern Railway.**  
THE STANDARD RAILWAY OF THE SOUTH.  
Direct Line to all Points.

**Texas, California, Florida, Cuba and Porto Rico.**

Strictly FIRST CLASS Equipments on all through and Local Trains; Pullman Palace Sleeping Cars on all Night Trains; Fast and Safe Schedules.

Apply to Ticket Agents for Time Tables, Rates and General Information, or address,

**R. L. VERNON,** T. P. A.,  
Charlotte, N. C.  
**F. R. DARBY,** C. P. & T. A.,  
Asheville, N. C.

No trouble to answer questions.  
**J. S. GARDNER,** J. M. GARDNER, W. A. TUCKER  
V. P. & G. V. Traf. Man' G. P. A.  
WASHINGTON, N. C.

**BARBERS.**  
**J. NOBLES,**  
FASHIONABLE BARBER.  
On Third street, next door to H. A. White. Good clean work guaranteed. Under white management.

**GREENVILLE SHAVING PARLOR,**  
Conducted by—  
**HENRY MOYE.**  
Cleaning clothes a specialty. Can be found in the Bernard building.

**A. B. PENDER,**  
FASHIONABLE BARBER,  
Can be found below Five Points. Next door to Reflector office.

**JAMES A. SMITH,**  
TONSORIAL ARTIST,  
Patronage solicited. Cleaning, Dyeing and Pressing Gents' clothes a specialty.

**HERBERT EDMUNDS,**  
FASHIONABLE BARBER,  
Special attention given to cleaning gentlemen's clothes.

**H. W. WHICHARD**  
(Successor to W. R. Whichard.)  
—DEALER IN—

**General Merchandise**  
**Whichard, N. C.**

The Stock complete in every department and prices as low as the lowest. Highest market prices paid for country produce.

## TICKET BUYERS.

Some Come on Them, Others Depart.

E. B. Ficklen left this morning for a trip over in Virginia.

Mrs. A. J. Griffin left this morning to visit relatives in Washington.

Mr. and Mrs. B. E. Parham returned Wednesday evening from Durham.

Mrs. L. I. Moore came home Wednesday from a visit to Rocky Mount and Wilson.

Miss Laura McGuire, of Suffolk, arrived Wednesday evening to visit Mrs. F. G. Whaley.

J. D. Garden, of Henderson, has taken a position here as bookkeeper for Roberts & Ficklen.

James Harper, of Kinston, spent Wednesday here and returned home on the evening train.

Misses Ella and Hattie Moseley, of Kinston, who were visiting the Misses Harding, returned home Wednesday evening.

Miss Lilly Jennings, of Lynchburg, who has been visiting Mrs. Ivy Smith in this county, took the train here Wednesday for Kinston.

Mrs. R. W. King and children came home on this morning's train from a trip to Seven Springs. Mr. King drove through the country.

H. M. Hardee left this morning for New York to purchase new goods. Charlie Wilkinson, one of his salesmen, accompanied him to assist in making the selections.

Mayor J. G. Moye left this morning for Cary to spend a few days with relatives. During his absence from town Alderman J. L. Wooten will act as Mayor pro tem.

Solicitor L. I. Moore reached home Wednesday evening from a trip to California. He reports a fine trip but says no place he has seen can equal Eastern North Carolina.

George Gary, of Henderson, who has been spending a few days here with his brothers, left this morning for Timmonsville, S. C., where he has a position with the American Tobacco Co.

**Beauty is Blood Deep.**  
Clean blood means a clean skin. No beauty without it. Cascarets, Candy Cathartic clean your blood and keep it clean, by stirring up the lazy liver and driving all impurities from the body. Begin to-day to banish pimples, boils, blotches, blackheads, and that sickly bilious complexion by taking Cascarets,—beauty for ten cents. All drug stores, satisfaction guaranteed, 10c, 25c, 50c.

**Safely Housed**  
We are in our new quarters and invite you to come and see us. We will continue to sell

**GENERAL MERCHANDISE**  
at the lowest price possible. We can save you money.

**J. C. Cobb & Son**

**Sour Stomach**  
"After I was induced to try **CASCARETS**, I will never be without them in the house. My liver was in a very bad shape, and my head ached and I had stomach trouble. Now, since taking Cascarets, I feel fine. My wife has also used them with beneficial results for sour stomach."  
JOS. KREHLING, 1221 Congress St., St. Louis, Mo.

**CANDY CATHARTIC**  
**Cascarets**  
TRADE MARK REGISTERED  
REGULATE THE LIVER

Pleasant, Palatable, Potent, Taste Good, Do Good, Never Sicken, Weakens, or Gripe, 10c, 25c, 50c.  
... CURE CONSTIPATION. ...  
Selling Remedy Company, Chicago, Montreal, New York, 318  
**NO-TO-BAC** Sold and guaranteed by all druggists to **CURE** Tobacco Habit.

# The Reflector Book Store

Has on hand a full supply of

**THE STANDARD BOTTLES FOR PAUL'S INKS AND MUCILAGE**

Automatic Ink Stand that will not spill when upset. Absolutely non-evaporating.

**THE MOST IMPORTANT INVENTION IN THIS LINE EVER ACCOMPLISHED.**

Never spill when turned over.

10 cts. per bottle. 10 c Wire stand 5c. 5 & 10 cents.

You may never but Should you ever want

## JOB - PRINTING

Give us a call.

## Reflector Job Printing Office.

—ANYTHING FROM A—  
**Visiting Card**  
TO A  
**Full Sheet Poster.**

## The Eastern Reflector

**TWICE-A WEEK**  
Is only \$1 a year and contains the news every week, and gives information to the farmers, especially those growing tobacco, that is worth many times more than the subscription price.

## The Daily Reflector

Gives the home news every afternoon at the small price of 25 cents a month. Are you a subscriber? If not, you ought to be.

# THE DAILY REFLECTOR

(WEATHER BULLETIN.)

Showers onight and Friday.

WEATHER YESTERDAY.	
Maximum	86
Minimum	75
Mean	80½
Rainfall (24 hours to 6 p. m.)	.15

## GREAT Midsummer Sale

ALL SUMMER GOODS of every description will be sold during the remainder of July at about

### One-half Price.

We are determined to close them out at once to make room for Fall goods. Now is the time to secure the best bargains from us.

We have just received a new line of—

### MATTINGS.

All kinds of house furnishings at lowest prices.



WANT A COOK STOVE?

There is but one best "Buck's Great White Enamel line"—is the flag that serves to distinguish them from all others.

Respectfully,

HIGGS & TAFT.

# Special Shoe Sale.

During the month of July we will make a special offering of several lots of **SHOES & OXFORDS** at Greatly Reduced Prices in order to reduce our stock.

**Lot 1.** MEN'S FRENCH ENAMELED PATENT LEATHER SHOES, Sizes 6½ to 7½ Regular \$5.00 values Special Price for this sale **\$2.50**

**Lot 2.** MEN'S RUSSET VICI BALS, Fine Soft Stock sizes 6½ to 7½, Regular \$3.50 values. Special sale price **\$2.00**

**Lot 3.** Ladies' Black Oxfords Assorted Styles. Only a few sizes in each style left. Regular \$2.00 and \$3.00 values. Special sale price **\$1.50 and \$2.00**

**Lot 4.** Ladies' Black Oxfords Assorted Styles. Broken sizes. If you can get a fit you have made a Bargain when you buy them at 65c and \$1.00. Regular \$1.00 and \$1.50 values.

**Lot 5.** Misses' Black Oxfords All kinds, broken lots Shoes that were sold at \$1.25. Special sale price **75 cents**

The above line of shoes will be arranged on a counter to themselves. Come early and ask to see our shoe counter.

Yours to please,

# J. B. CHERRY & CO.

## BLOOD TELLS.

YES, it is the index to health. If you have bad blood you are likely to learn that you have Rheumatism, one of the most horrible diseases to which man kind is heir. If this disease has just begun its work, or if you have been afflicted for years, you should at once take the wonderful new cure.

### RHEUMACIDE

Thousands have been cured. The summer season is the best time to take a rheumatic remedy. Nature will then aid the medicine in effecting a permanent, constitutional cure. People with bad blood are subject to catarrh, indigestion and many other diseases. To be healthy the blood must be pure. RHEUMACIDE is the Prince of blood purifiers. Sold at Wooten's Drug Store. \$1.

## TYPE AND PRESS.

### WHO WANTS IT?

### SPEAK QUICK.

THE REFLECTOR recently purchased two printing office outfits and has a quantity of surplus material that will be sold cheap. There is a cylinder press large enough to print a nine column paper, in splendid condition, and a quantity of Small Pica, Long Primer, Brevier and Nonpariel body type. We can furnish a complete outfit large enough for a six or seven column paper.

Specimens of the body type are shown in this advertisement, the type being taken from the case just as it runs, so it shows for itself how well it prints. This is the Small Pica size of which there is 1 pair of cases.

Then here is a paragraph set from the Long Primer size. We have 4 pairs of these cases. In buying this type you do not get something that is worn out and cast aside, but a good serviceable type, capable of much wear.

Here is something a little smaller, Brevier size. There are 2 pairs of these and it is a bargain for somebody interested in printing. It may not come but once in a lifetime that an opportunity is given for buying type as cheap as we will sell these lots.

## LITTLE DROPS OF WATER

Make a Pond—Little Drops of News Make a Paper.

Get your ground ready for turnip seed.

Cantaloupes are retailing for a cent apiece.

Fresh Butter, Cheese and Shredded Coco nut at S. M. Schultz's.

One man in town possesses fourteen dogs, all of them bird dogs.

No man knows how successful he will be in advertising until he tries.

It is to be hoped that a day or two more will clear up the bad weather.

You need not want the weather to stick any closer to you than this kind does.

Don't forget you laundry. Leave your packages at H. M. Hardee's Store.

A new lot of the Parker Fountain Pens, several styles, at Reflector Book Store.

It is going to be a fine trip, the Band Excursion to Ocracoke Saturday. Don't fail to go.

The weather tried to keep fair today and when the sun did get a clear shake it was sizzling hot.

Saturday is the day for the Band Excursion to Ocracoke. Give the boys a big crowd and have a good time.

Some of the boys are telling it on Policeman Billie Smith that he is waiting to come out in his new uniform Sunday.

Something every young man should consider is that nobody thinks more highly of him than he does of himself.

The third base ball nine of Tarboro came down this morning to play a game this afternoon with the Greenville kids.

Uniforms for the policemen have arrived and the officers are out in them. The uniforms were furnished by Frank Wilson.

The Greenville base ball team will go to Kinston on the freight tomorrow afternoon to play another game with the Kinston team.

You know the best when you see it. That is our kind.

HUGH SHEPPARD, Agent Wilmington Steam Laundry

You not only have a fine trip at small expense but you will encourage the Band by going on the excursion to Ocracoke Saturday.

Every business man, bookkeeper and agent needs a good fountain pen. The Parker Pen leads all others. Find them at Reflector Book Store.

LOG HAULERS.—We have about 4,000,000 feet of logs which we want hauled by contract.

THE MACCLESFIELD Co., Tarboro, N. C.

Strause Brothers have moved their office out to their new factory building. They have had an office down town while the building was going up.

WOOD CUTTERS.—We want to let a contract to cut 2,000 cords of pine wood.

THE MACCLESFIELD Co., Tarboro, N. C.

Those who go on the Band Excursion to Ocracoke Saturday will have an opportunity of going over to Portsmouth and witness a drill by the crew of the life saving station.

LOST.—Many golden opportunities have been lost by those who suffer from rheumatism. By taking Rheumacide now they will be permanently and positively cured.

You will get \$2 worth of music on the Band Excursion to Ocracoke, but that price includes the round trip fare also, with the privilege of returning any time before September if you wish to stay longer than the excursion.

SAW MILLS—TIMBER.—We have about six million feet of pine timber which we want sawn and kiln dried by contract. Parties interested will please correspond with.

THE MACCLESFIELD Co., Tarboro, N. C.

## Special Announcement

TO OUR FRIENDS AND PATRONS.

We take pleasure to inform you that we have recently added to our stock



RICH'S PATENT "Julia Marlowe" Shoes and Oxfords

ELASTIC GORING OVER INSTEP.

Original in design. Attractive in appearance and Perfect Fit—Fascinate and Captivate the wearer At First Trial.

Probably no shoes have ever been introduced that have made so many friends in so short a time.

### A Few

### Points

wherein the Julia Marlowe styles differ from other shoes.

They fit like a glove. They never pinch the foot. They are beautiful in design. They fit high or low instey. They yield to every action of the foot. They conform in vital points to the shape of the wearer's foot instead of pressing the foot into the shape of the shoe.



TRY A PAIR... they are sure to please you.

A beautiful line of Samples of **CARPETS!** to select from just arrived. **SAM T. WHITE,**

The Monarch of Strength is



**LION COFFEE.**

(ABSOLUTELY PURE.)

Its strength comes from its purity. It is all pure coffee, freshly roasted, and is sold only in one-pound sealed packages. Each package will make 40 cups. The package is sealed at the Mills so that the aroma is never weakened. It has a delicious flavor, incomparable strength. It is a luxury within the reach of all.

Premium List in every package. Cut out your Lion's Head and get valuable premiums free.

If your Grocer

does not have Lion Coffee in his store, send us his name and address that we may place it on sale there. Do not accept any substitute. WOOLSON SPICE CO., Toledo, Ohio.

## THE BEST IN TOWN!

Is what my customers say of my

**FRUIT CREAM.**

My Soda Fountain is running in full blast. Come to me and keep cool. **BRYAN'S DRUG STORE.**

ALL PRESCRIPTIONS promptly and carefully filled.

R. L. DAVIS, PRESIDENT.

R. A. TYSON, Vice-President. J. L. LITTLE, Cashier. RE-ORGANIZED JUNE 15TH, 1896.

STATEMENT OF THE **BANK OF GREENVILLE, GREENVILLE, N. C.**

AT THE CLOSE OF BUSINESS JUNE 30TH, 1899.

Resources.	Liabilities.
Loans and Discounts : \$75,651.63	Capital stock paid in : \$23,000.00
Overdrafts : : : : 1,962.84	Undivided Profits less
Furniture and Fixtures : 1,540.85	Expenses paid 3,698.87
Cash Items : : : : 112.39	Deposits subject to chk : 84,757.65
Cash : : : : 16,647.32	Due Banks and Bankers : 286.54
Due from Banks : : : : 17,272.27	Cashiers' chks outstanding 1,651.10
Rev. Stamps : : : : 206.86	
<b>\$113,394.16</b>	<b>\$113,394.16</b>

Careful attention given to all business entrusted to us.