

# THE DAILY REFLECTOR

D. J. WHICHARD, Editor and Owner.

TRUTH IN PREFERENCE TO FICTION.

TERMS : 25 Cents a Month.

Vol. 8.

GREENVILLE, N. C., THURSDAY AUGUST 11, 1898.

No. 1135

## NEW STOCK CLEAN STOCK

We have opened in the store, formerly occupied by D. D. Hasket, with a full line of

DRY GOODS, NOTIONS,  
HATS, SHOES.

Heavy and Fancy  
GROCERIES

We have opened to sell goods, and have put our prices down to the lowest figure to move them out. We will make it to your interest to trade with us.

**R. B. JARVIS & BRO.**

GREENVILLE, N. C.

## GREENVILLE MALE ACADEMY.

The next session of this school will begin on Monday, Sept. 5th, 1898.

Terms are as follows:  
Primary English per month \$2.00  
Intermediate \$2.75  
Higher \$3.00  
Languages (each) \$1.00

No effort will be spared to do first class work.

Will be glad to have your boys. For particulars, see or address  
W. H. RAGSDALE,  
July 29, 1898. Principal.

## Tetter on the Hands.

For several years I was a sufferer from Tetter on my hands. It would come in little watery pimples, and the itching was almost more than I could stand. The skin was tender and the itching would swell so I could hardly bend my fingers. Sometimes my hands would become perfectly raw from the scratching or breaking of the pimples. When I was in this condition I tried one-half dozen bottles of Mrs. Joe Person's Remedy and some Wash in 1884, and by the time I took it my hands were cured, and I am now well of the trouble. It has since broken out a little at times, but not enough to inconvenience me or make me try more medicine. I am now well.

M. E. KING.

Burlington, N. C., May 27, 1896.

FOR SALE BY  
J. N. L. WOOTEN,  
Greenville, N. C.

We will offer

## Great Reduction

on our stock

## FOR CASH

to make room for Fall Goods. See our prices on Shoes and Dry Goods. These to hold good until August 26th 1898.

**J. C. COBB & SON.**

## A FIGHT NEAR MANILA

New York, August 9.—A copyright cablegram from Manila bay, August 4th via Hong Kong, August 9th, to The Evening World, gives the following particulars of the fighting near Malate on the night of July 31st:

General Greene's forces, numbering 4,000 men, had been advancing and entrenching. The arrival of the third expedition filled the Spaniards with rage and they determined to give battle before Camp Dewey could be reinforced. The trenches extended from the beach, 300 yards to the left flank of the insurgents.

Sunday was the insurgent first day and their left flank withdrew, leaving the American right flank exposed. Companies A and E, of the Tenth Pennsylvania and Utah battery, were ordered to reinforce the right flank.

In the midst of a raging typhoon, with a tremendous downpour of rain, the enemy's forces, with 3,000 men, attempted to surprise the camp. Our pickets were driven in and the trenches assaulted.

The brave Pennsylvania men never flinched, but stood their ground under a withering fire. The alarm spread and the First California regiment, with two companies of the Third artillery, who fight with rifles, were sent up to reinforce the Pennsylvanians. The enemy were on top of the trenches when these reinforcements arrived, and never was the discipline of the regulars better demonstrated than by the work of the Third artillery, under Captain O'Hara.

Nothing could be seen but flashes of Mauser rifles. Our men ran right up to attacking Spaniards and mowed them down with regular volleys.

The Utah battery, under Captain Young, covered itself with glory. The men pulled their guns through mud axle deep. Two guns were sent around in flank and poured in a destructive enfilading fire. The enemy was repulsed and retreated in disorder. Our infantry had exhausted its ammunition and did not follow the enemy.

Not an inch of ground was lost, but the scene in the trenches was one never to be forgotten.

During flashes of lightning the dead and wounded could be seen lying in blood-red water, but neither the elements of heaven or the destruction of man could ring a cry of protest from the wounded. They encouraged their comrades to fight, and handed over their cartridge belts.

During the night the Spanish scouts were seen carrying off the dead and wounded of the enemy.

The American dead were buried next day in the convent of Maracaban.

## How Spaniards Get the News.

When Sampson and Schley destroyed Cervera's fleet at Santiago and took 1,600 Spanish prisoners, the captives then heard the first news about Dewey having destroyed the Spanish fleet at Manila two months previous. It has been the practice of the Spanish government to keep its subjects ignorant of the results of the war or else give out false reports making them believe that every engagement resulted in a Spanish victory. Here is an extract from a telegram from Manila which shows the kind of news the Spanish troops over there get:

It is alleged in a dispatch officially published here that Germany is combining with Russia to prevent the capture of Manila and that therefore Admiral Dewey and General Merritt will refrain from attacking the city, that the American resources are exhausted, that Admiral Cervera on issuing from Santiago harbor, was victorious and captured Admiral Samp-

son, afterward bombarding American ports; that the Cherokees and the negroes in the United States have rebelled; that President McKinley has been mobbed; that Admiral Cervera is at Singapore; that he is going to land in the south Philippines, that the allied Spanish fleet will annihilate Admiral Dewey and, finally, that the climate is decimating the American soldiers."

## DEPOT FACILITIES.

Increasing Freights Require More Room

Since the railroad came to Greenville and the depot was first built it has been necessary to enlarge the building twice to provide accommodation for the increasing freight handled at this point. As the tobacco market has grown there has been a corresponding increase in mercantile interests, and the two combined have caused freight shipments and receipts to enlarge very rapidly until even with the additions made to warehouse space at the depot there is a want of room for conveniently handling these freights. While at the depot this morning THE REFLECTOR reporter went through the warehouse and found it full of freight, principally merchandise, and this with the tobacco season and preparation for fall business barely started. If freights are so large this early that the warehouse is full, it may be expected that when tobacco shipments reach their height and fall goods are coming in sure enough, there will not be near sufficient room for handling these advantageously.

THE REFLECTOR is not going to undertake to dictate to the railroad officials, but believe if they would build another warehouse exclusively for tobacco shipments and leave the present one to be used for merchandise freights it would inure greatly to their own interests here as well as be very advantageous to the tobacco market and business of the town. Of course it must be as gratifying to the railroad authorities as it is to our own people to see the business of Greenville enlarging, both being mutually benefited thereby. So far as our observation has gone the Atlantic Coast Line has always manifested a willingness to provide ample accommodations for shippers, and is ready to do its part to enhance the business interests of the towns it reaches. Our Chamber of Commerce and Tobacco Board of Trade might co-operate with the railroad in the matter of increased depot facilities and all would be benefited.

## Store Broken Into

Wednesday night sometime between midnight and daybreak some one broke into the dry goods store of Frank Wilson by prying open one of the rear windows. Just how much the robber got away with is not known, but some good are missing.

## Cotton Lower.

The Bureau report issued the 10th of this month places the condition of the crop at 91 per cent, against 87 per cent for last year. In consequence of this improved condition there has been a decline of several points in price.

## Bethel High School.

The Fall Term begins on  
MONDAY SEPT. 5 1897

This is a school of high grade for both sexes. Only first class teachers will be employed, and very thorough work will be done.

The best discipline will be maintained. Board from \$8 to \$10 per month

## RATES OF TUITION.

Primary	\$1.25 to \$1.50
Intermediate	\$2.00 to 2.50
High School	3.00 to 3.50
Music	3.50

A discount of 8 per cent will be allowed when cash is paid in advance for a whole term.

For further information see or address  
Z. D. McWHORTER Principal,  
Bethel N. C.

More Goods for Less Money  
or More Goods for the Same  
Money than any House.

## CLOTHING

In quality great  
Such patterns elate  
At the prices we state.  
Patterns rare and in-

tense,  
As bargains they're im-  
mense  
You invest good judg-  
ment and sense.

Take look at my styles,  
They came many miles  
They keep you in smiles  
No better clothes,  
Than this line we sup-

pose,  
From sheep ever arose.

## CLOTHING.

FRANK WILSON

THE KING CLOTHIER.

## LANG'S STOCK AT COST.

I have purchased the entire  
stock of M. R. Lang and will  
close them out

AT COST

Many of the goods will be  
sold, even

BELOW COST

The goods will not be mov-  
ed to my store, but will be closed  
out at Lang's store as fast as  
possible.

**H. M. HARDEE.**

J. WHICHARD, Editor.

EVERY AFTERNOON (except Sunday)

Second-Class Mail Matter

SUBSCRIPTION RATES

One year \$3.00
One month .25
One week .10

Delivered in town by carriers without extra cost.

Advertising rates are liberal and can be had on application to the editor or at the office.

We desire a live correspondent at every Postoffice in the county, who will send in brief items of news as it occurs in each neighborhood.

THURSDAY, AUGUST 11, 1898.

DEMOCRATIC NOMINEES

FOR JUDGES SUPERIOR COURT.

- First District - George H. Brown, Jr., of Beaufort.
Second District - Henry R. Bryant, of Ocracoke.
Fifth District - Thomas J. Shaw, of Guilford.
Sixth District - Oliver H. Allen, of Lenoir.
Seventh District - Thomas A. McNeill, of Robeson.
Eleventh District - W. A. Hoke, of Lincoln.

FOR SOLICITOR

- Third District - Larry I. Moore, of Pitt.

Don't Tobacco Spit and Smoke Your Life Away. To quit tobacco easily and forever, be magnetic, full of life, nerve and vigor, take No-To-Bac.

DEMOCRATIC CONGRESSIONAL CONVENTION

A Convention of the Democratic party of the First Congressional Districts hereby called to meet at Edenton, N. C., on August 30, 1898, at 3 P. M., for the purpose of nominating a candidate for Congress and to transact such other business as shall come before it.

We notice a call for a mass meeting of Republicans of this county to be held here on Saturday, August 20th, is being circulated. The call is signed by eighty-four negroes and says it is "for the purpose of obtaining Republican sentiment and instituting plans for the reorganization of the party &c."

The Populist and Republican committees appointed to arrange for fusion in the county of Halifax met Tuesday and after a seven hours stormy session the Republicans kicked the Populists out, telling them that the Republicans had the votes and would take the offices and that they had no further use for them.

Educate Your Bowels With Cascarets. Candy Cathartic, cure constipation forever. 10c, 25c. If C. C. C. fail, druggists refund money.

What Ella Wheeler Thinks

Ella Wheeler Wilcox writes: "The young woman who kissed Mr. Hobson saluted heroism. She would have done the same had the hero been a heroine. She forgot sex in sentiment. It is doubtful if Mr. Hobson was equally forgetful. He, no doubt, forgot that he was a hero, and remembered that he was a man."

A Girl Train-Dispatcher

The new train-dispatcher of the Chattanooga Southern railway is Miss Edith Jarnagin, a girl of twenty, who has been an expert telegrapher for five years. Telegraphy was one of the first occupations entered by Western and Southern women, and many of them have also been station agents, rising to such commands from efficiency at the telegraph desk.

To Cure Constipation Forever. Take Cascarets Candy Cathartic. 10c or 25c. If C. C. C. fail to cure, druggists refund money.

Temperance is making wonderful progress. Twenty years ago, says the Chicago Interior, it was often true that young men who drank beer or wine, or even whiskey in moderation, might be advanced to places of great trust and responsibility.

Three months ago State Chairman Holton said he would soon put the Republican uniform on the Populists. Harry Skinner, who was here yesterday, had it on, gold lace, trust buttons, corporation spurs and all. But "there are others." No honest Populist will wear it, Mr. Holton! - Raleigh News and Observer.

Beauty Is Blood Deep.

Clean blood means a clean skin. No beauty without it. Cascarets, Candy Cathartic clean your blood and keep it clean, by stirring up the lazy liver and driving all impurities from the body.

The issue in North Carolina is white supremacy and honesty and decency in the administration of public affairs, in State and county. The success of the Democratic party alone can and will assure these things; therefore every vote cast against Democratic nominees means a desire for the continuation of Russell-Butlerism in the State, negro domination in a large number of the counties, and of the dishonesty and scandals which characterize our public institutions.

Sour Stomach

"After I was induced to try CASCARETS, I will never be without them in the house. My liver was in a very bad shape, and my head ached and I had stomach trouble. Now, since taking Cascarets, I feel fine. My wife has also used them with beneficial results for sour stomach."



Pleasant, Palatable, Potent, Taste Good, Do Good, Never Sicken, Weaken, or Gripes, 10c, 25c, 50c. CURE CONSTIPATION. Sterling Remedy Company, Chicago, Montreal, New York. 318

NO-TO-BAC Sold and guaranteed by all druggists to CURE Tobacco Habit.

ESTABLISHED 1858

SAMUEL M. SCHULTZ Dealer in -

Pork Sides, Shoulders

Farmers and Merchants buying their year's supplies will find it to their interest to get our prices before purchase elsewhere. Our stock is complete in all branches.

Tobacco, Snuff, Cigar Flour, Sugar, etc.

Always at lowest market prices as we buy direct from manufacturers

FURNITURE

Always on hand and sold at prices to suit the time. Our goods are all bought and sold for CASH therefore, have no risk to run we sell at a close margin.

S. M. SCHULTZ.

School Books at Half Price.

All kinds of books bought, sold and exchanged, SCHOOL and LAW books a specialty. New books at Publisher's prices. Send for Catalogues.

SOUTHERN BOOK EXCHANGE, 127-129 Fayetteville St., Raleigh, N. C. Phone 253B 225c.

BOB GREENE & CO

UNDERTAKER FUNERAL DIRECTORS AND EMBALMERS

We have just received a new hearse and the nicest line of Coffins and Caskets, in wood, metallic and cloth ever brought Greenville.

We are prepared to embalming in all its forms. Personal attention given to conducting funerals and bodies entrusted to our care will receive every mark of respect.

Our prices are lower than ever. We do not want monopoly by court competition.

We can be found at any and times in the John Flaagan Buggy Co's building.

BOB GREENE & CO.

Barbers.

E. PENDEE,

FASHIONABLE BARBER

Can be found below Five Points, next door to Reflector office.

A. S. SMITH,

TONSORIAL ARTIST.

GREENVILLE, N. C.

Shampooing, Cleaning, Dyeing, Pressing Gents Clothes a specialty.

HERBERT EDMUNDS, FASHIONABLE BARBER.

Special attention given to cleaning gentlemen's clothes.

S. J. NOBLE, TONSORIAL ARTIST

On Main street near W. C. Hines' Only barber shop now conducted by white workmen.

COTTON

Below are Norfolk prices of cotton and peanuts for yesterday, as furnished by Cobb Bros. & Commission Merchants of Norfolk.

Table with 2 columns: Cotton grades (Good Middling, Middling, Low Middling, Good Ordinary, Low-steady) and prices.

PEANUTS

Table with 2 columns: Peanut grades (Prime, Extra Prime, Fancy, Spanish, Low-steady) and prices.

DIRECTORY

CHURCHES

BAPTIST - Services every Sunday, morning and evening. Prayer meeting Thursday evening. Rev. A. W. Setzer, Pastor. Sunday school 9:30 A. M. C. D. Rountree, Superintendent.

CATHOLIC - No regular services. EPISCOPAL - Services fourth Sunday, morning and evening. Lay services second Sunday morning. Rev. A. Greaves, Rector. Sunday school 9:30 A. M. W. B. Brown, Superintendent.

METHODIST - Services every Sunday, morning and evening. Prayer meeting Wednesday evening. Rev. N. M. Watson, Pastor. Sunday school 9:30 A. M. A. B. Ellington, Superintendent.

PRESBYTERIAN - Services third Sunday, morning and evening. Rev. J. B. Morton, Pastor. Sunday school 9:30 A. M. E. B. Ficklen, Superintendent.

LODGES.

A. F. & A. M. - Greenville Lodge No. 284 meets first and third Monday evening. R. Williams, W. M. J. M. Reuss, Sec'y.

L. O. O. F. - Covenant Lodge No. 17 meets every Tuesday evening. W. F. Burch, N. G. D. D. Overton, Sec.

K. of P. - Par River Lodge No. 93, meets every Friday evening. Dr. E. A. Moyer, Jr., C. C. B. E. Parham, K. of R. and S.

R. A. - Zeb Vance Council No. 1673 meets every Thursday evening. W. L. Wilson, R. M. R. Lang, Sec.

The State Normal and Industrial College

Offers the young women of the State thorough professional, literary, classical, scientific, and industrial education. Annual Expenses \$90 to \$130. Faculty of 30 members. More than 400 regular students. Has matriculated about 1,500 students, representing every county in the State except two.

Correspondence invited from those desiring competent trained teachers. For catalogue and other information, address, PRES. McIVER, GREENSBORO, N. C.

Atlantic Coast Line

Schedule in Effect April 12th, 1898

Departures from Wilmington.

NORTHROND.

Passenger - Due

9:00 a. m. Magnolia 10:46 a. m. Warsaw 11:00 a. m. Goldsboro 12:05 a. m. Rocky Mount 12:55 p. m. Tarboro 2:45 p. m. Weldon 4:33 p. m. Petersburg 6:22 p. m. Richmond 7:15 p. m. Norfolk 8:05 p. m. Washington 10:30 p. m. Baltimore 11:00 a. m. Philadelphia 3:50 a. m. New York 6:53 a. m. Boston 3:00 p. m.

DAILY No. 40 - Passenger - Due Mag

7:15 p. m. Warsaw 8:55 p. m. Warsaw 9:10 p. m. Goldsboro 10:10 p. m. Wilson 11:06 p. m. Tarboro 6:45 a. m. Rocky Mount 11:57 p. m. Weldon 1:42 a. m. Norfolk 10:30 a. m. Petersburg 3:14 a. m. Richmond 4:00 a. m. Washington 7:41 a. m. Baltimore 9:03 a. m. Philadelphia 11:25 a. m. New York 2:03 p. m. Boston 9:00 p. m.

SOUTHERND.

DAILY No. 55 - Passenger - Due Lake

4:00 p. m. Waccamaw 5:09 p. m. Chadbourne 5:41 p. m. Marion 6:43 p. m. Florence 7:25 p. m. Sumter 9:10 p. m. Columbia 10:30 p. m. Denmark 6:12 a. m. Augusta 7:55 a. m. Macon 11:15 a. m. Atlanta 12:25 p. m. Charleston 10:50 p. m. Savannah 1:50 a. m. Jacksonville 7:30 a. m. St. Augustine 10:20 a. m. Tampa 5:25 p. m.

ARRIVALS AT WILMINGTON -

FROM THE NORTH.

DAILY No. 49 - Passenger - Boston

5:50 P. M. 7:10 p. m. New York 9:00 p. m. Philadelphia 12:05 a. m. Baltimore 12:50 a. m. Washington 4:30 a. m. Richmond 9:05 a. m. Petersburg 10:00 a. m. Norfolk 11:52 a. m. Tarboro 12:12 p. m. Rocky Mount 12:47 p. m. Wilson 2:37 p. m. Goldsboro 3:20 p. m. Warsaw 4:17 p. m. Magnolia 4:24 p. m.

DAILY No. 51 - Passenger - Leave

3:00 p. m. Boston 12:00 night, New York 9:30 a. m. Philadelphia 12:09 p. m. Baltimore 2:25 p. m. Washington 3:46 p. m. Richmond 7:30 p. m. Petersburg 8:12 p. m. Norfolk 2:20 p. m. Weldon 9:4 a. m. Tarboro 3:61 p. m. Rocky Mount 5:40 a. m. Leave Wilson 6:22 a. m. Goldsboro 7:01 a. m. Warsaw 7:53 a. m. Magnolia 8:05 a. m.

DAILY No. 51 - Passenger - Leave

except New Bern 9:00 a. m. Jacksonville 10:26 a. m. This train 12:15 P. M. arrives at Walnut street.

FROM THE SOUTH.

DAILY No. 54 - Passenger - Leave

12:20 P. M. Tampa 8:10 a. m. Sanford 3:27 p. m. Jacksonville 7:40 p. m. Savannah 1:45 night, Charleston 6:23 a. m. Columbia 6:00 a. m. Atlanta 8:20 a. m. Macon 9:00 a. m. Augusta 3:30 p. m. Denmark 4:25 p. m. Sumter 5:08 a. m. Florence 9:58 a. m. Marion 10:36 a. m. Chadbourne 11:38 a. m. Lake Waccamaw 7:59 a. m.

Train on Scotland Neck Branch Road

leaves Weldon 3:55 p. m., Halifax 4:30 p. m., arrives Scotland Neck at 5:20 p. m., Greenville 6:57 p. m., Kinston 7:55 p. m. Returning, leaves Kinston 7:50 a. m., Greenville 8:52 a. m. Arriving Halifax at 11:18 a. m., Weldon 11:23 a. m. daily except Sunday.

Trains on Washington branch leave

Washington 8:20 a. m., and 2:20 p. m. Leaves Parrale 9:10 a. m., and 4:00 p. m. Tarboro 9:45 a. m., returning leaves Parrale 3:30 p. m., Parrale 9:35 a. m. 6:20 p. m., arrives Washington 11:30 a. m., and 7:20 p. m. Daily except Sunday. Connects with trains on Land Neck Branch.

Train leaves Tarboro, N. C. via Albemarle & Raleigh R. R. daily except Sunday, at 5:30 p. m., Sunday 4:15 P. M.; five Plymouth 7:40 P. M., 6:10 p. m. returning leaves Plymouth daily except Sunday, 7:50 a. m., Sunday 9:00 a. m., arrive Tarboro 10:55 a. m. and 11:00

Train on Midland N. C. branch leave

Goldsboro daily, except Sunday, 7:10 a. m. arriving Smithfield 8:30 a. m. Returning leaves Smithfield 9:00 a. m., arrive at Goldsboro 10:25 a. m.

Trains on Latta branch, Florence

leaves Latta 6:40 p. m. arrive Dunbar 11:50 p. m. Clio 8:05 p. m. Returning leaves Clio 6:10 a. m. Dunbar 6:30 a. m. arrive Latta 7:50 a. m. daily except Sunday.

Train on Clinton Branch leaves

Weldon for Clinton daily, except Sunday 11:20 a. m. and 4:15 p. m. Returning leaves Clinton at 7:00 a. m. and 8:00

Train No. 78 makes close connection

Weldon for all points north, all rail via Richmond, also at Rocky Mount with Norfolk and Carolina R. R. for Norfolk and all points North via Norfolk.

E. M. EMERSON Gen'l Pass. Agent

R. L. DAVIS, Pres't  
A. TYSON, Vice-Pres. J. L. LITTLE, Cash er  
REORGANIZED JUNE 15th, 1896.

STATEMENT OF THE

**The Bank of Greenville,  
GREENVILLE, N. C.**

At the Close of Business July 14th, 1898.

Resources.	Liabilities.
Loans and Discounts, ... \$58,803.51	Capital stock paid in... \$23,000.00
Due from Banks, ... 4,943.47	Undivided Profits less
Furniture and Fixtures, ... 1,517.75	Expenses paid, ... 1,115.75
Cash Items, ... 954.57	Dividends unpaid, ... 30.00
Cash, ... 24,355.79	Deposits subject to check, 64,420.74
	Due Banks, ... 610.41
	Cashiers checks outstanding, 1,397.19
<b>\$90,575.09</b>	<b>\$90,575.09</b>

**SEVEN SPRINGS**

**UNDER NEW MANAGEMENT**

The Finest of all Mineral Waters. Endorsed by prominent physicians and all who have used it.

A Positive cure for Indigestion, Dyspepsia, Inflammation, and nervous Prostration. Infalible cure for Gravel and Stone in the Bladder. A peerless climate, right in the midst of pine and oaks and towering hills.

The Buildings and Grounds have been put in thorough Repair.

POST OFFICE:  
SEVEN SPRINGS.

R. R. DEPOT:  
LAGRANGE.

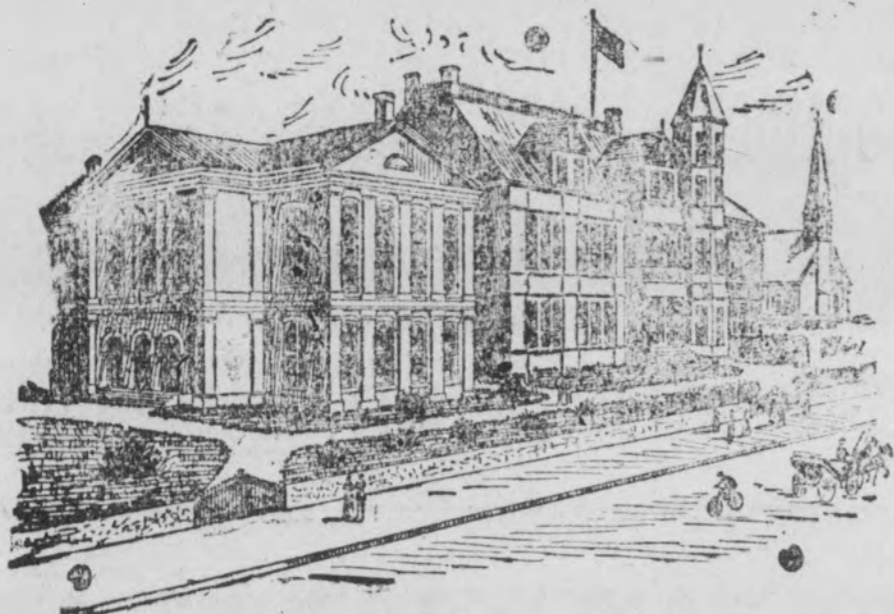
PHONES FROM HOTEL TO LAGRANGE

Board per day \$1.50 per week \$7.00; per month \$25.00. Special rates given to families for the season. Livery stables furnish the best team for driving. Good barber in the hotel. Reduced rates on the A. & N. and W. & W. railroad.

G. F. SMITH, PROPRIETOR.  
Address all correspondence to W. M. UZZELL, Manager.

**EDUCATIONAL.**

**OAK RIDGE INSTITUTE.**



NEARLY 50 YEARS OF CONTINUOUS SUCCESS.  
279 Students last year.

The largest and best equipped private fitting school in the South.

English, the Classics, Mathematics, Book-keeping, shorthand, Telegraphy, Typewriting. Terms reasonable. For catalogue, address

J. A. & M. H. HOLT, Oak Ridge, N.C.

**The North Carolina  
College of Agriculture  
and Mechanic Arts**

Will re-open September 1898, with improved equipment in every department. Twenty-three experienced specialists in Faculty. Full courses in Agriculture, Science, Civil, Mechanical, Electrical Engineering. Expenses very moderate.

For catalogue address  
Pres. A. Q. HOLLADAY  
Raleigh N. C.

**Trinity College**

Openers ages, Courses in English Language and Lit., Philos., Ancient and Modern Language. History, Sociology, Mathematical study, Bible, Law and Political Science. Men admitted to all courses on \$6. The largest institution of full cost in the state.

Board fare 50 to \$10.00 per month. Tuition, \$50.00 a year.

Next session opens September 7, 1898. For catalogue, address,

J. C. KILGO,  
Durham, N. C.

**THE UNIVERSITY.**

Largest patronage and fullest equipment in its history. Faculty, 38; Students, 508; 3 Academic Courses; 3 Elective Courses; 3 Professional Schools, in Law, Medicine and Pharmacy.

Advanced classes open to women. Tuition \$60 a year; Board \$8 a month. Ample opportunities for self-help Scholarships and loans for the needy summer school for 10 to 24 instructors. 185 students. Total enrollment

For catalogue, address,  
PRES. ALDERMAN

**1793 Bingham School**

Established in 1793.  
Maj. R. BINGHAM,  
A. M., LL. D., Supt.  
1898 Military; U. S. Army  
Officer detailed.

**SHEVILLE,**

**A N. C.**

**Greenville School**

for Young Ladies.

Will be held in the College Building near the depot.

Number Limited not to Exceed 50.

L. L. Hargrave, Prin.

Fall term begins Thursday, Sept 1st '98

Rates of Tuition.

1st to 4th Grades (inclusive per month)	\$2.00
English & Mathematic courses per month	3.00
Latin, Greek, French, each per month	1.00
Music—Piano, Theory and Harmony per month	3.00
Elocution—Individual Lessons per month	2.50

Terms payable monthly. Pupils taking both Music and Literary course will be allowed 10 per cent discount.

We hope to merit the substantial support and full confidence of those interested in true education and respectfully invite you to make your arrangements at once to enter your girls at our school. Any further desired information will be gladly given.

**TO CONSTRUCT A HOTBED.**

Select a Place Where the Soil is Well Drained.

Flower-growers who enjoy bringing into bloom different varieties of flowers earlier in the season than their less ambitious friends will find in a hotbed of moderate size a great help. In it seed may be sown direct, and the plants allowed to remain until sufficiently large and matured to transplant into the open ground or to pot.

First select a location where the surface of the soil is well drained, and where the bed may have a southern, sunny exposure. Then a frame must be constructed of dimensions to suit the maker, but governed largely by the size and number of sash to be used on top. The height of the frame at the back should be thirty-six inches, and at the front, thirty inches, the sides sloped to suit, so that the sash, when laid on the top, will fit the edges closely and be at a good slant to shed the rain. This frame may be constructed of very ordinary, cheap, rough lumber, as little or no part of it is exposed to view. When the frame is completed, from a stable haul a quantity of good, fairly dry manure, and fill the bed with it. After the bed is filled, tread the manure down as solidly as possible, which should reduce the pile to a depth of about eighteen inches. If necessary add more manure to make the pile in the bed eighteen inches all over, and level it as well as possible. It is quite necessary that the manure be packed solidly in the bed, and it is better to have it moderately dry, as the heat will be of a more lasting character and not so fierce if put in in that state. The bed is then ready for the soil, which should be of a light, fairly rich, and somewhat porous nature. Place over the manure a layer of soil about four inches deep, not more, and smooth the surface over evenly.

Bank manure around the bed on the outside to help hold the heat and keep out the cold, and then place the sash on top. After a few days the temperature will begin to rise, and the bed will be ready for operation. The seed may be sown directly into the soil in such a manner as may suit the operator. The temperature must be regulated by raising and lowering the sash for ventilation, and this part must be closely watched, especially on bright sunny days when the heat generated through the glass will be considerable. Keep the temperature as near sixty degrees as possible, which is a good mark for most plants.

**The Best Tomato.**

A grower of tomatoes who has had several years of experience in raising new seedlings, as well as in testing all varieties as introduced, says that the way for every grower to get the variety best suited to his locality is to raise a few plants of a dozen or so of the best varieties and plant them near each other; from the crop select the finest specimens, those having the fewest seeds, the finest color, and which are borne on the most thrifty and productive vines, and to continue this selection on the same lines from year to year and he will soon obtain several varieties which will answer his requirements. Tomatoes cross readily, so that when the perfect variety is once obtained all other sorts should be abolished or at least not planted near it.

**Cultivating Horse Radish.**

Horse-radish is grown from small pieces of the root four to eight inches long. For cultivation in the garden, the ground is prepared as for other crops and the pieces of roots are planted in rows from two to three feet apart and 15 to 18 inches apart in the row. Mark off the ground and make a small hole with a dibble or planting stick and set so that the upper end is slightly below the surface. Press the soil firmly about the root, keep the ground free from weeds and cultivate as beans or cabbage. The soil should be rich and in good condition. The horse-radish is dug in the fall during the cool moist weather after other crops have been taken care of. The earth is all shaken from the roots and these are stored in houses or pits, to be marketed during the winter.

**Success With Strawberries.**

To secure the greatest yield from any variety of strawberry, the preparation of the land is an essential feature. Strawberries may be grown on nearly all kinds of soil, that most favorable to produce quality as well as quantity being a heavy, sandy loam. Any considered excellent corn land will be found well suited to the strawberry. It is desirable that the ground should have been in hood crops the year previous to setting.

**The Gardener's Bumble Bee.**

It is estimated that a single toad destroys in a year insects which if they had lived might have damaged crops to the extent of about \$20. The practice of collecting and colonizing toads in gardens is thought to be commendable.

**Benefit of Green Manuring.**

Green manuring with peas has increased the yield of potatoes in one-third.

**SEE THAT?**

What is it?

It is a picture of the celebrated

**Parker Fountain Pens**

Best in use. The outfit of no business man is complete without one.

**The Reflector Book Store**

has a nice assortment of these Fountain Pens also a beautiful line of Pearl Handle Gold Pens. You will be astonished when you see them and learn how very cheap they are.

You may never  
But should you ever

**Want Job Printing**

come to see us.

**Reflector Job Printing Office.**

Anything from a

Visiting Card

Full sheet Poster

The Daily Reflector

Gives the home news every afternoon at the small price of 25 cents a month. Are you a subscriber? If not you ought to be.

be Eastern Reflector.

TWICE-A-WEEK.

is only \$1 a year and contains the news every week, and gives information to the farmers, especially those growing tobacco, that is worth many times more than the subscription price.

# DAILY REFLECTOR.

## Weather Bulletin.

Rain tonight and Friday.



NEVER IMITATED IN QUALITY

### THE EXCELLENCE OF SYRUP OF FIGS

is due not only to the originality and simplicity of the combination, but also to the care and skill with which it is manufactured by scientific processes known to the CALIFORNIA FIG SYRUP Co. only, and we wish to impress upon all the importance of purchasing the true and original remedy. As the genuine Syrup of Figs is manufactured by the CALIFORNIA FIG SYRUP Co. only, a knowledge of that fact will assist one in avoiding the worthless imitations manufactured by other parties. The high standing of the CALIFORNIA FIG SYRUP Co. with the medical profession, and the satisfaction which the genuine Syrup of Figs has given to millions of families, makes the name of the Company a guaranty of the excellence of its remedy. It is far in advance of all other laxatives, as it acts on the kidneys, liver and bowels without irritating or weakening them, and it does not gripe nor nauseate. In order to get its beneficial effects, please remember the name of the Company.

CALIFORNIA FIG SYRUP CO.

SAN FRANCISCO, Cal. LOUISVILLE, Ky. NEW YORK, N. Y.

How is your laundry in this kind of weather? Lamp, en? Send it to the Wilmington Steam Laundry and it will be done up right. Shipments sent off every Wednesday morning.

HUGH SHEPPARD.

## BRIEF REFLECTIONS

Just the Kind of News You Are Looking For

Services in the Baptist church to-night.

Fresh Country Butter received today at S. M. Schultz's.

Another supply of those cheap Bagster's Teachers' Bibles, at Reflector Book Store.

Ice Cream every day. Orders for any quantity by measure promptly filled. W. C. Hines, Phone 24.

The John Flanagan Buggy Company shipped three of their fine buggies to Richmond today.

During the storm Wednesday afternoon lightning struck a house down near the river, doing one end of it considerable damage.

An account of the Sub Rosa reception was handed in today too late for printing this issue of THE REFLECTOR. It will appear tomorrow.

### Buy tickets.

The Atlantic Coast Line has had notices put up about the depot that fares paid on the train will be at a higher rate than the price paid for tickets. Passengers should get tickets from the agent before getting on the train.

### Story of Ben Hur.

Notwithstanding the unfavorable weather a good sized audience was at Germania hall Wednesday night, in attendance upon Capt. Rider's illustrated lecture on Ben Hur. And all present thoroughly enjoyed and appreciated it. At the very beginning Capt. Rider caught the attention of the audience and so entertainingly did he narrate the story that he held into the finish. The pictures were good and added much in impressing the lecture.

## ON PAROLE.

These Come and Go at Will

J. R. Carson, of Bethel, was here today.

H. P. Strause left Wednesday for Smithfield.

R. L. Smith returned Wednesday evening from Richmond.

W. G. Lutz came home Wednesday evening from Littleton.

F. S. Maulsby returned Wednesday evening from Fayetteville.

Col. Harry Skinner returned Wednesday evening from Raleigh.

Frank and Durwood Wilson left this morning to visit relatives at Conetoe.

Mrs. H. H. Wilson, of Kinston, came over this morning to visit relatives near town.

Miss Mattie Russell, of Washington, arrived Wednesday evening to visit Miss Besse Jarvis.

B. F. Menning, of Winterville, passed through this morning going to Baltimore to buy new goods.

Rev. E. C. Glenn, of Raleigh, came down Wednesday evening to visit friends and left this morning.

I. A. Sugg, Jr., came home Wednesday evening from Macon, Ga., where he had been attending a business college.

J. A. Robinson and family have moved to Greenville. We are sorry to lose them from Scotland Neck and commend them to the good people of Greenville. Our best wishes go with them.—Scotland Neck Commonwealth

### GRIMESLAND LETTER

GRIMESLAND, N. C. Aug. 3rd 1898.

Robt Greene was in town Sunday.

W. M. Moore is changing his ware room which will add much to the looks of his store.

Mrs. J. O. Proctor and children returned home Friday from a visit near Williamston.

Grimesland is not dead yet, she has two good Sunday schools.

We will have three sermons here next Sunday, two in the M. E. church one at 11 A. M. and one at 8 P. M. At 4 P. M. Bro Booth, the Missionary Baptist minister of Washington will fill his regular appointment here.

J. O. Proctor went to Mt. Pleasant Sunday to attend the yearly meeting.

John W. Mayo has just returned from near Jamesville where he has been spending a few days with his best girl. He is all smiles. Better go again John.

J. O. Proctor & Bro. are building a large house to keep new buggies in. They will keep a full supply on hand all the time.

Furnie Powell opened business here last week.

Our people are talking of going to Oeracoke Saturday night.

J. F. Proctor is much better this week.

Rev. N. L. Seabolt is having the M. E. church painted this week.

Right many of our people went to the picnic at Yankee Hall last Friday.

The new dwelling of W. M. Moore came very near catching on fire yesterday.

Dr. Jones went to Greenville yesterday on business.

## OSMUND HOUSE

GREENVILLE, N. C.

We are now in the W. H. White house on Dickinson avenue prepared to furnish board and rooms Terms moderate. For further information apply to

W. F. MORRILL, Prop.

## TO-DAY'S MARKETS

NEW YORK FUTURES.

COTTON	Opening	Noon	Close
August.	5.83		5.85
October.	5.92	5.90	5.92
January.	6.01	6.00	6.00

LIVERPOOL.

August and September.		
Opening	Close	One
3.23	3.23	Quiet

### For Congress

I hereby announce myself a candidate for Congress in the First District, subject to the action of the Populist convention.

S. V. LAUGHINGHOUSE

### Miss Pepper's

Private School.

Miss Pepper announces the opening of her school on

MONDAY, SEPT. 5, 1898.

Kindergarten, Primary and Intermediate grades, Voice training, Elocution and Physical Culture Careful attention given to the individual development of each pupil Terms reasonable Patronage solicited

# W. O. Barnhill,

## GENERAL REPAIR SHOPS

GREENVILLE, N. C.



Vehicles, all kinds of Machinery, Gins and Farming Implements repaired on short notice. Carts, Wagons, Brackets Posts, Balisters, etc., made to order. Shops on Dickinson Avenue. Phone 47.

### MUSIC PUPILS.

I desire a class of pupils in instrumental Music, beginning Monday, Sept. 5th. Terms made known on application. Lessons will be given to pupils in their home if preferred. MISS MARY ALICE MOYE

# Your Attention Please.

We have just thrown on our counters a beautiful line of

## Summer Dress Goods and Shoes

which will be sold at low figures.

C. T. MUNFORD, Next Door to the Bank Greenville

## GREAT REDUCTION!

### IN Lawns, Dimitys, Wash Goods

and all Summer Goods. My goods are all fresh and of the latest styles. A call will convince you. Remember this is a great reduction.

H. C. HOOKER

## WE HAVE JUST RECEIVED

our new line of

## Spring and Summer Goods

and will be glad to have you for our customer

DRY GOODS AND NOTIONS The prettiest line ever

SHOES - SLIPPERS of every size, Best assortment under

We also carry a complete line of Hats, Caps, Clothing Furniture, Hardware and GENERAL MERCHANDISE.

Agent for Geo. A. Clark's Spool Cotton. Lime and Builders Material a specialty.

ALFRED FORBES.

# The Grand MIDSUMMER SALE.

Is on. Now is the time to BUY GOODS CHEAP. We want to give you bargains for the cash. Our

## Summer Goods

are cut to such a price as to please you and make us popular. All we ask is that you look at the GOODS and we will name prices that will make them go.

Remember we carry complete stocks in each of our departments

We can furnish everything you need to wear from the sole of your foot to the top of your head. Do you want to furnish your home? If so, we are the people for you to see as we carry a complete stock of

## House Furnishing Goods

and our prices are low.

Be convinced by examining the goods at

J. B. CHERRY & CO