

DAILY REFLECTOR.

D. J. WHICHARD, Editor.

EVERY AFTERNOON (EXCEPT SUNDAY)

Entered as Second-Class Mail Matter

SUBSCRIPTION RATES

One year, \$3.00
One month, .25
One week, .10
Delivered in town by carriers without extra cost.

We desire a live correspondent at every postoffice in the county, who will send in brief items of news as it occurs in each neighborhood. Write plainly and only on one side of the paper

FRIDAY, FEBRUARY 18, 1898.

THE JANITORSHIP EXAMINATION.

Col. Fairbrother Tells in Advance How it Will be Conducted and Prints a List of Questions to be Answered.

The civil service examination for a government janitor at Statesville, N. C., next week, is exciting the people greatly, and a great time is expected.

When it comes to securing a janitor for its Federal buildings, the government does not pick up any man who wants a job—but it ascertains by a systematic course if the applicant is the man for the place. The blank can be obtained at Washington, D. C., and can be filled out and taken to the city—each applicant being obliged to deliver the blank in person, and remain in Washington 30 days in order that he could answer any question that the committee could not understand on the blank so filled. The questions are rather intricate and they show beyond all doubt that the government wants a man who is qualified to act as janitor of the buildings. The questions which are to be answered are:

Do you think you are fitten for janitor? Your age. Place of birth. was you born twins or just so? Are you in favor of the free and unlimited coinage of silver at the ratio of 16 to 1 without the aid or consent of any nation on earth—and how long have you been feeling this way? Do you endorse Mormonism, and if so, do you endorse it with or without the polygamy clause? If you were cleaning a window by blowing your breath on the glass, how much corn likker would it take to do the work at a distance of say 6 feet? How much at a distance of 12 feet? How much North Carolina corn likker would it take to cause your breath to melt glass at the distance named? In scrubbing a floor do you pull the mop to you or push it from you? If not, why not, and when? What are the cardinal colors of the rainbow? Are you color blind or do you see doub'e? Are you addicted to the habit of railroad passes? Have you a romantic passion for rum? Have you that tired feeling? Do you put the cat out at nights? What is your normal respiration and are you addicted to shop lifting? Who is Governor of North Carolina, and who, outside of Josephus Daniel, is the greatest man in the State? Have you a birth mark or any other distinguishable traits?—Fairbrother's Farrago.

Another baby's body found on a vacant lot in the Harlem district of New York, makes the twenty-first corpse of infants discovered in that neighborhood within six weeks.

Armament and Pensions.

The following indicates the relation between our pension expenditures and the military expenses of the great Powers of Europe.

Italian army, \$54,000,000.
Austrian army, \$70,000,000.
British army, \$90,000,000.
German army, \$120,000,000.
French army, \$138,000,000.
Russian army, \$142,000,000.
U. S. pensioners, \$150,000,000

This comparison does not show the full extent to which our military burdens exceed those of the staggering nations of the Old World, for in addition to our army of pensioners we have to support another army of soldiers. If the cost of army, navy and pensions for all countries were combined it would be found that the American expenditures for warlike purposes were by far the heaviest in the world.—N. Y. Journal.

A Patriot for Profit

A colored veteran who had become weary waiting on prosperity, approached a citizen and asked:

"Boss, is dey still fightin' in Cuba?"

"Oh, yes."

"En does dey pay mens money ter go dar en fight fer um?"

"I think so. Do you want to enlist?"

"Yes, sub; I thought I would."

"Why, they'd butcher you over there!"

"Ispec' dey would, sub, but I rather be killed in Cuba, wid a belly full, dan starve ter death nachully in de Nunited States!"

Death at a pin Factory

Saturday a week ago, at the Woodruff and Smith pin factory near Roaring Gap hotel, a horrible death occurred. Eli Willard, one of the employees, was caught in the shafting and whirled to death in a moment. His arm was broken, his leg torn loose and the back part of his head knocked off leaving the brains to ooze out. It required some time to disentangle the mutilated and mangled body.—Wilkesboro Chronicle

It has always been our idea that the State and National government should be run with as little cost to the people as possible, but the new tangled way of doing things by our modern selfish bosses is to run things at the greatest possible cost. They say the best way to make people prosperous is to tax them to the utmost and spend money as though it grew upon the trees or fell like manna from the heavens. They are reformers with a vengeance.—Lexington Dispatch.

The total production of manufactured tobacco for home use in the United States during the calendar year ending December 31, 1897, was 171,700,486 pounds, an increase of 31,063,870 pounds over 1896; cigars, 4,173,573,833, an increase of 46,843,815; cigarettes, including little cigars, 4,170,091,880, an increase of 68,283,880; snuff, 13,779,374 pounds, an increase of 1,141,508 pounds. In others words, progress in all branches of tobacco manufacturing.—Winston Tobacco Journal.

A Spanish newspaper says that two descendants of Christopher Columbus are now inmates of a poorhouse in Cadiz. Columbus was treated very shabbily in Spain before he died. The fate of his descendants only furnishes a new proof that a great man's posterity cannot expect to live upon the fame of his achievements.

Corn.

The value of the corn crop in the United States is double the value of the wheat crop: but the producers of corn are not satisfied: They have never been able to convince any considerable proportion of the world's bread-eaters that corn should take a place beside rice and wheat as a proper staple of human food.

A convention of corn growers are now assembled in Chicago to devise means of spreading abroad a sort of corn evangel. If European nations could be prevailed upon to practically abandon the use of rye bread, and if the northern Asiatics could be made to know that life did not altogether depend upon the result of the rice harvest corn would be a welcome and cheap substitute. The great difficulty is in properly preparing it for human consumption. In the form of pork, beef and whiskey, and to a limited extent as a food for cattle, the corn growers have been able to find foreign buyers; but there is no demand at all proportioned to the capacity of supply. We trust that the delegates to the Chicago convention may be able to push the way for their great product side by side with American cotton.

If we can fill the bellies and clothe the backs of the nations, what more could we ask?—Philadelphia Record.

Tongue Twisters.

The popularity of Peter Piper's celebrated peck of pickled peppers will probably never wane as a spare to catch the tongue that would fain be agile; but the test has formidable rivals. The following short sentences, as their authors maintain, do wonders in baffling the ordinary powers of speech: "Gaze on the gay gray brigade." "The sea ceaseth, and it sufficeth us." "Sav, should such a shapely sash shabby stitches show?" "Strange strategic statistics." "Give Grimes Jim's gilt gig whip." "Sarah in a shawl shoveled soft snow slowly." "A cup of coffee in a copper coffee cup."—Louisville Dispatch.

The Skull and Teeth Sold

On Haw river, about seven miles from Burlington, there was some time ago a considerable overflow and the banks were washed up right much. At one place, which is supposed to have been an Indian burying ground, the washout was more apparent. Several citizens of Burlington went up purposely to see the curiosities, and one of them found a complete human skeleton. The skull and teeth were solid, but the remainder of the bones went to dust as soon as they were exposed to the air. Various Indian relics have been found near the same place.

The Farmer

Throughout the world the farmer is the only worker who has not been legislated for. When the American farmer sees statute books cumbered with minute and voluminous regulations to prevent workmen from toiling too many hours he thinks of his labor from before sunrise till after sunset.—New York Commercial-Advertiser.

Let the farmers make food supplies for homemarkets and then let local consumers give preference to home-made supplies and there will be profit and satisfaction to both producer and consumer and general benefit to the community.

VICK'S SEEDS
VICK'S GARDEN GUIDE
VICK'S ILLUSTRATED MAGAZINE

DIRECTORY.

BAPTIST—Services every Sunday, morning and evening. Prayer meeting Thursday evening. Rev A. W. Setzer, Pastor. Sunday school 9:30 A. M. C. D. Rountree, Superintendent.
CATHOLIC—No regular services.
EPISCOPAL—Services fourth Sunday, morning and evening. Lay services second Sunday morning. Rev. A. Greaves, Rector. Sunday school 9:30 A. M. W. B. Brown, Superintendent.
METHODIST—Services every Sunday, morning and evening. Prayer meeting Wednesday evening. Rev. N. M. Watson, Pastor. Sunday school 9:30 A. M. A. B. Ellington, Superintendent.
PRESBYTERIAN—Services third Sunday, morning and evening. Rev. J. B. Morton, Pastor. Sunday school 9:30 A. M. E. B. Ficklen Superintendent.

LODGES.

A. F. & A. M.—Greenville Lodge No 284 meets first and third Monday evening. J. M. Reuss W. M. L. I. Moore, Sec.
I. O. O. F.—Covenant Lodge No. 17 Meets every Tuesday evening. J. V. Johnson N. G. L. H. Pender, Sec.
K. of P.—Far River Lodge No. 93, meets every Friday evening. H. W. Whedbee, C. C. A. B. Ellington K. of R. and S.
R. A.—Zeb Vance Council No. 1696 meets every Thursday evening. W. L. Wilson, R. M. R. Lang, Sec.
K. of H.—Insurance Lodge No. 1169 meets every Friday evening. John Flanagan, D. Henry Sheppard, R. A. L. of H. Pitt Council 236 meets every Thursday night. J. B. Cherry C. W. B. Wilson, Sec.

Cotton and Peanut.
Below are Norfolk prices of cotton and peanuts for yesterday, as furnished by Cobb Bros. & Commission Merchants of Norfolk

Table with 2 columns: Item and Price. Rows include Good Middling, Middling, Low Middling, Good Ordinary, and various Peanut prices.

T. H. BATEMAN PRACTICAL TIN AND SHEET IRON WORKER.

Offers his services to the citizens of Greenville and the public generally.

ROOFING, GUTTERING, Spouting and Stove Work, a specialty.

Satisfaction guaranteed or no charges made. Tobacco Pipes made in season. Shop on Dickinson Avenue.

W. B. Rodman, W. Densie Grimes Washington, N. C. Greenville, N. C.
RODMAN & GRIMES ATTORNEYS AT LAW, Greenville N. C. Practice wherever services are desired.

Barbers.

S. J. NOBLES, TONSORIAL ARTIST On Fourth street near Postoffice Only Barber shop in town conducted by white workmen

A. B. PENDER, FASHIONABLE BARBER, Can be found below Five Points, next door to Redactor office.

JAMES A. SMITH, TONSORIAL ARTIST, GREENVILLE, N. C. Patronage solicited. Cleaning, Dyeing and Pressing Gents Clothes a specialty

HERBERT EDMUNDS, FASHIONABLE BARBER, special attention given to cleaning

New Bern Fair

FEB. 28 TO MAR. 5. '98

Better and more attractive than ever. New Features Throughout

Fine - Racing.

Purses Aggregate \$4,000

Liberal Premiums in all departments The exhibits of Fish, Oysters, Game, Live Stock, Poultry and Agricultural Products will be the finest ever displayed The Ladies Department is unusually large

The Greatest of all Attractions

Free! Free!!

THE KEMP SISTERS'

Hippodrome and Wild West Shows.

A thrilling and realistic exhibition of Wild Frontier life, enacted by Genuine Western Cow Boys and Girls with the ponies, mustangs and trappings of every day life in the far West. The entire performance takes place on the race track every afternoon during the fair, and is absolutely free. Don't miss seeing it For premium list or other information address the Secretary

GEORGE GREEN, NEW BERN, N. C

Greenville Market.

Corrected by S. M. Schultz.

Table with 2 columns: Item and Price. Rows include Butter, Western Sides, Sugar cured Hams, Corn, Corn Meal, Flour, Family, Lard, Oats, Sugar, Coffee, Salt per Sack, Chickens, Eggs per doz, Beeswax per, and Cotton Seed per bushel.

GREENVILLE

Male Academy.

The next session of the school will open on

MONDAY SEPT. 2, 1897

and continue for 10 months.

The terms are as follows:

Table with 2 columns: Level and Price. Rows include Primary English per mo., Intermediate, Higher, and Languages (each).

The work and discipline of the school will be as heretofore.

We ask a continuance of your liberal patronage.

W. H. RAGSDALE.

Atlantic Coast Line

Schedule in Effect Jan. 17th, 1897.
Departures from Wilmington.

NORTHBOUND.

DAILY No 48—Passenger—Due Mar-
2.35 a. m. nolia 11.02 a. m. Warsaw 11.15
a. m. Goldsboro 12.05 a. m. Wil-
son 12.55 p. m. Rocky Mount
1.40 p. m. Tarboro 2.45 p. m.
Weldon 4.33 p. m. Petersburg
6.22 p. m. Richmond 7.15 p. m.
Norfolk 8.05 p. m. Washing-
ton 11.30 p. m. Baltimore 1.06
a. m. Philadelphia 3.50 a. m.
New York 6.53 a. m. Boston
3.00 p. m.

DAILY No 40—Passenger Due Mar-
7.15 p. m. nolia 8.55 p. m. Warsaw 9.10
p. m. Goldsboro 10.10 p. m.
Wilson 11.06 p. m. Tarboro
6.45 a. m. Rocky Mount 11.57
p. m. Weldon 1.42 a. m. Nor-
folk 10.30 a. m. Petersburg
3.14 a. m. Richmond 4.66 a. m.
Washington 7.41 a. m. Balti-
more 9.03 a. m. Philadeiphi-
11.25 a. m. New York 2.03 a.
m. Boston 9.00 p. m.

SOUTHBOUND.

DAILY No 55—Passenger Due Lake
40 p. m. Waccamaw 5.09 p. m. Chad-
bourn 5.41 p. m. Marion 6.43 p.
m. Florence 7.25 p. m. Sum-
ter 9.10 p. m. Columbia 10.30
p. m. Denmark 6.12 a. m. August-
ta 7.55 a. m. Macon 11.15 a. m.
Atlanta 12.25 p. m. Charles-
ton 10.50 p. m. Savannah 1.50
a. m. Jacksonville 7.30 a. m.
St. Augustine 10.30 a. m. Tam-
pa 5.25 p. m.

ARRIVALS AT WILMINGTON— FROM THE NORTH.

DAILY No. 49.—Passenger—Boston
5.50 P. M. 1.03 p. m. New York 9.00 p. m.
Philadelphia 12.05 a. m. Balti-
more 2.50 a. m. Washington
4.30 a. m. Richmond 9.05 a. m.
Petersburg 10.00 a. m. Nor-
Weldon 11.52 a. m. Tarboro
12.12 p. m. Rocky Mount 12.47
p. m. Wilson 2.37 p. m. Golds-
boro 3.20 p. m. Warsaw 4.1
p. m. Magnolia 4.24 p. m.

DAILY No. 41.—Passenger—Leave
5.50 A. M. Boston 12.00 night, New
York 9.30 a. m. Philadelphia
12.09 p. m. Baltimore 2.25 p. m.
Washington 3.46 p. m. Rich-
mond 7.30 p. m. Petersburg
8.12 p. m. Norfolk 2.20 p. m.
Weldon 9.43 p. m. Tarboro
6.01 p. m. Rocky Mount 5.40
a. m. Leave Wilson 6.22 a. m.
Goldsboro 7.01 a. m. Warsaw
7.53 a. m. Magnolia 8.05 a. m.

DAILY No. 51—Passenger—Leave
except New Bern 9.00 a. m. Jackson-
ville 10.26 a. m. This train
12.15 P. M. arrives at Walnut street.

FROM THE SOUTH.

DAILY No. 54—Passenger—Leave
1.20 P. M. Tampa 8.10 a. m. Sanford 3.27
p. m. Jacksonville 7.40 p. m.
Savanna 1.45 night. Charles-
ton 6.23 a. m. Columbia 6.00
a. m. Atlanta 8.20 a. m. Macon
9.00 a. m. Augusta 3.30 p. m.
Denmark 4.25 p. m. Sumpter
8.08 a. m. Florence 9.58 a. m.
Marion 10.36 a. m. Chadbourn
11.38 a. m. Lake Waccamaw
12.09 a. m.

Train on Section Neck Branch Road
leaves Weldon 3.55 p. m. Halifax 4.30
p. m., arrives Scotland Neck at 5.20 p.
m., Greenville 6.37 p. m., Kinston 7.55
p. m. Returning leaves Kinston 7.50
a. m., Greenville 8.52 a. m. Arriving
Halifax at 11.18 a. m., Weldon 11.33 a. m.
daily except Sunday.

Trains on Washington Branch leave
Washington 8.20 a. m. and 2.20 p. m.
arrives Pamlico 9.10 a. m. and 4.00 p.
m., Tarboro 9.45 a. m., returning leaves
Tarboro 3.30 p. m., Pamlico 9.35 a. m.
and 6.20 p. m., arrives Washington
11.00 a. m. and 7.20 p. m. Daily ex-
cept Sunday. Connects with trains on
Scotland Neck Branch.

Train leaves Tarboro, N. C. via Alber-
marle & Raleigh R. R. daily except Sun-
day, at 5.30 p. m., Sunday 4.15 P. M.
arrives Plymouth 7.40 P. M., 6.10 p. m.
turning leaves Plymouth daily except
Sunday, 7.50 a. m., Sunday 9.00 a. m.,
arrives Tarboro 10.05 a. m. and 11.00

Train on Midland N. C. branch leaves
Goldsboro daily, except Sunday, 7.10 a.
m. arriving Smithfield 8.30 a. m. Re-
turning leaves Smithfield 9.00 a. m., ar-
rives at Goldsboro 10.25 a. m.

Trains on Latta branch, Florence R.
& leave Latta 6.40 p. m. arrive Dunbar
7.50 p. m. Olio 8.05 p. m. Returning
leave Olio 6.10 a. m. Dunbar 6.30 a. m.
arrive Latta 7.50 a. m. daily except Sun-
day.

Train on Clinton Branch leaves War-
saw for Clinton daily, except Sunday,
11.20 a. m. and 4.15 p. m. Returning
leaves Clinton at 7.00 a. m. and 3.00 p. m.

Train No. 78 makes close connection
at Weldon for all points daily, all rail via
Richmond, also at Rocky Mount with
Norfolk and Carolina R. R. for Norfolk
and all points North via Norfolk.

H. M. EMERSON,
Gen'l Pass. Agent

EMERSON, Traffic Manager
KENT, Gen'l Manager.

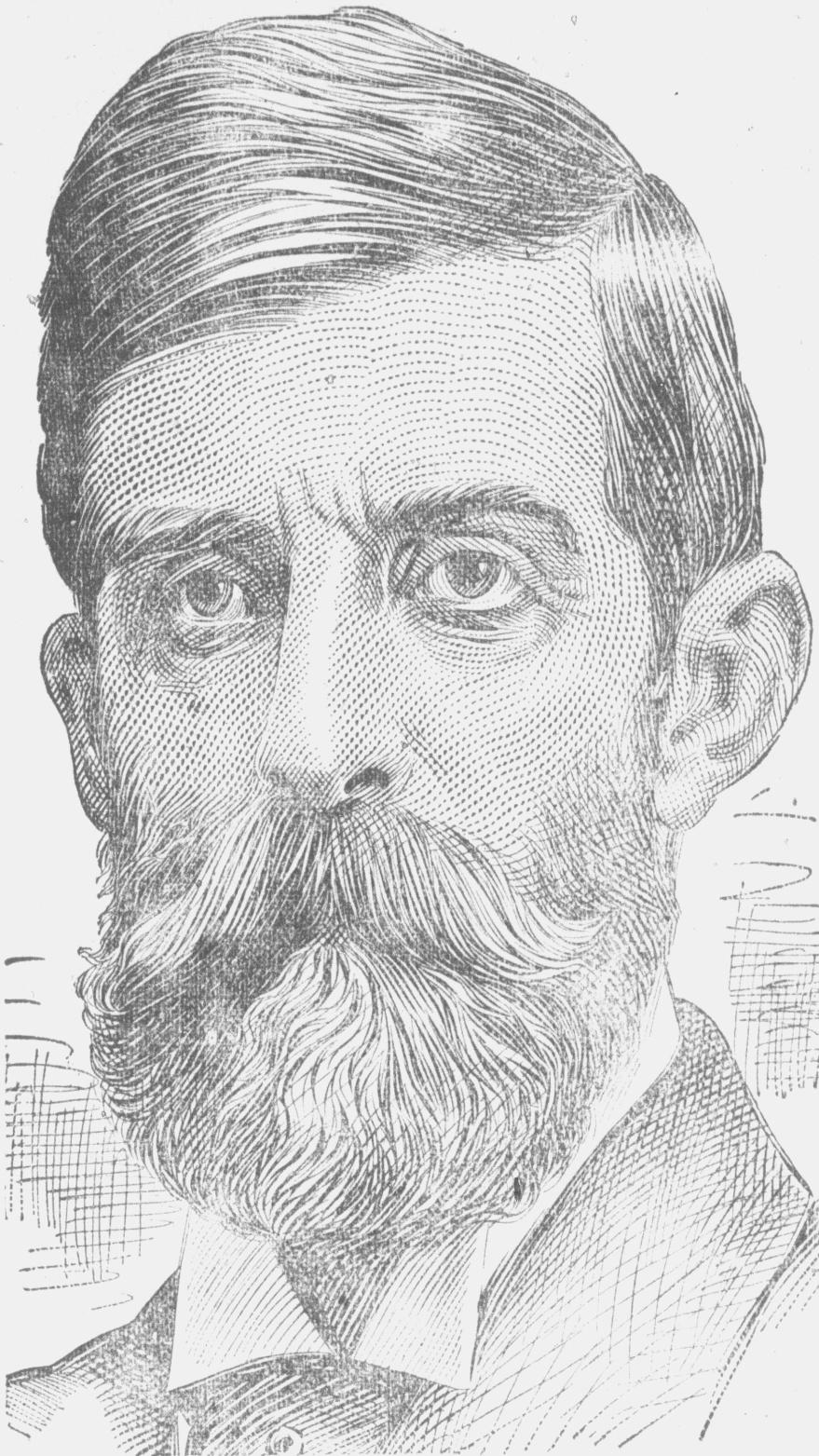
ALL ABOUT

A handsomely illustrated book of
200 pages descriptive of Texas and
the resources of that great state
will be mailed to any address on
receipt of eight cents to cover post-
age.

D. J. PRICE
G. P. & T. A. I. & G. N. R. A.
Palestine, Texas.
East Texas lands are attracting
considerable attention. Mention
this.

THE MAYOR OF LINCOLN N. J.

Mr. Drake Feels it His Duty to Recommend Paine's Celery Compound



The youngest and most bustling city
in the United States.—

Founded last April, Lincoln boasts a
sewerage system, electric lights, macad-
amized roads, trolley cars, telephone
franchise and a water plant.

From a hamlet to a town—to a city,
in this incredibly short time, Lincoln
has grown with the wonderful progres-
siveness looked for only in the West—
a splendid example of the indomitable
pertinacity of one strong man.

Like most forceful men, Mayor Drake
must see results before giving his ap-
proval; but when convinced he speaks
out his mind without fear or favor of
any one.

There is no hesitation among Mayor
Drake's friends in saying that Paine's
celery compound has been of the utmost
help in enabling him to do a prodigious
amount of work, and to get rid of that
insomnia that at one time resulted from
every prolonged effort. Mayor Drake
himself says:

Lincoln, Middlesex Co., N. J.

Oct. 30, 1897.

Wells, Richardson & Co.,

Gentlemen—I have been getting
Paine's celery compound from a local
druggist. After sixteen hours' work
each day, I sleep eight hours each night
like a baby, and attribute much of the

strengthening of my nerves to Paine's
celery compound. Yours truly,
SILAS D. DRAKE.

Nothing demoralizes the health soon-
er or more completely than even the
occasional loss of sleep. To start a new
day with the brain unrefreshed is like
trying to keep a worn out horse up to
work with the whip instead of by feed-
ing. The incessant brain activity is as
if the skull were laid bare and the sur-
face of the brain were struck lightly
every few seconds and without a sign
of a "let up."

Thus sleeplessness imperceptibly, but
no less surely, destroys the brain cells
that are the sources of mental power
and the health of every organ of the
body.

Paine's celery compound gets the
nervous system out of this dangerous
rut of sleeplessness. It supplies nour-
ishment to the nervous tissues faster
than they are worn out, and does not
let the nutrition of these delicate parts
get low enough to bring on insomnia.

One of the earliest evidences of the
final success of Paine's celery compound
in curing debility, nervousness, sleep-
lessness and derangements of liver and
kidneys is the increased appetite, the
clearer skin, and that indescribable
precursor of health, a feeling of "well
being" that takes the place of the tired,
languid, melancholy condition.

What London Drinks.

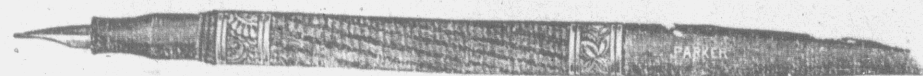
In a recent case at the Kensington
petty sessions the well known re-
freshment contractors, Messrs.
Spiers & Pond, caterers to the Vic-
torian exhibition, were summoned
at the instigation of the Kensington
vestry for selling a sample of brandy
and two samples of whisky which
were not of the nature, substance
and quality of the article demanded.
The defense set up was the extraor-
dinary one that in one case a bar-
maid had emptied into the brandy
and whisky decanters the remaining
portion of a glass of whisky and
water left on the counter by custom-
ers. In the case of the other sample
the barmaid had, in consequence of
a complaint which had been made
to her that the stock of the bar un-
der her charge was unsatisfactory,

put water into the siphon which sup-
plied the tap from which the sample
of whisky was purchased. The bench
inflicted a penalty of £15. Apart
from the fact that the spirits were
adulterated, the practice of empty-
ing the leavings of customers' glasses
into the vessels holding the spirits
for public supply is a disgusting
and filthy and dangerous one, and
the vestry of Kensington deserve
the unqualified thanks of the
public for the action which they
took.—London Lancet.

Very Birdlike.

"Do you believe in the adage,
'Riches have wings?'"
"Yes," replied the man who is
worried by the trusts; "but that
doesn't prevent their being cooped
up by some man now and then."

SEE THAT?



What Is It?

It is a picture of the celebrated

PARKER FOUNTAIN PENS

Best in use The outfit of no business man is
complete without one.

The Reflector Book Store

has a nice assortment of these Fountain Pens
also a beautiful line of Pearl Handle Gold Pens,
You will be astonished when you see them and
earn how very cheap they are.

You may never,

But should you ever

Want Job Printing

Come to see us.

Reflector Job Printing Office.

Anything from a

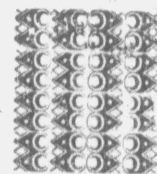
Visiting Card

—TO—

Full sheet Poster.

The Daily Reflector

Gives the home news
every afternoon at the
small price of 25 cents a
month. Are you a sub-
scriber? If not you
ought to be.



The Eastern Reflector.

TWICE-A-WEEK.

Is only \$1 a year. It
contains the news every
week, and gives informa-
tion to the farmers, es-
pecially those growing
tobacco, that is worth
many times more than
the subscription price.

DAILY REFLECTOR.

JUDICIOUS ADVERTISING.

Creates many a new business.
Enlarges many an old business.
Preserves many a large business.
Revives many a dull business.
Rescues many a lost business.
Saves many a failing business.
Secures success to any business.

TRAIN AND BOAT SCHEDULES.

Passenger and mail train going north, arrives 8:52 A. M. Going south, arrives at 6:57 P. M.
North Bound Freight, arrives 9:50 A. M., leaves 10:10 A. M.
South Bound Freight, arrives 2:00 P. M., leaves 2:15 P. M.
Steamer Tar River arrives from Washington Monday, Wednesday and Friday, leaves for Washington Tuesday, Thursday and Saturday.

To "advertise judiciously," use the columns of the REFLECTOR.

Weather Bulletin.

Rain, clearing Saturday evening or night, warmer Saturday morning.

NO CURE—NO PAY.
That's the way all druggists sell GROVES TASTELESS CHILL TONIC for Chills, Fever and all forms of Malaria. It is simply Iron and Quinine in a tasteless form. Chills, love it. Adults prefer it to bitter, nauseating Tonics. Price, 50c.

When the hour hand points to nine, Have your washing on the line.



\$500.00 GUARANTEE. ABSOLUTELY HARMLESS.
Will not injure hands or fabric.
No Washboard needed. Can use hard water same as soft. Full Directions on every package. An 8-oz. package for 5 cts. or 6 for 25 cts.
Sold by retail grocers everywhere.
"When the Hour Hand Points to Nine, Have Your Washing on the Line."

NINE O'CLOCK WASHING TEA.

Recommended by the best house-keepers for Clothes Washing, Dish Washing, House Cleaning.
5 Cts Package. Try it.
For sale by
J. B. CHERRY & CO.

JUST THE NEWS

The Reflector Gives What You Are Looking For

Lent begins next Wednesday.
Knights of Pythias meet tonight.
Daughters of Rebekah meet tonight.
Looks like bad weather is going to strike us again.
The Goldsboro tobacco market has closed for the season.
The Maine question—how come our war ship to blow up?

Cotton Seed Meal and Seed Oats cheap at S. M. Schultz.

The public school here for the colored race will open the first of March.

Miss Lillian Cherry gave a delightful party at her home Wednesday evening.

The Fayetteville Observer says forest fires in Cumberland county during the last few days have done immense damage.

Manager W. S. Atkins returned today from Snow Hill where he has been rattling in a telephone connection with Greenville.

Have your laundry ready to go off Wednesday morning. You get the best work done at the Wilmington Steam Laundry.

W. F. PREDEY, Agent.

Mapping the Town.

An agent of the Sanborn Map Company is here taking drawings for a new insurance map of the town. To get the necessary distances and location of buildings he often has to go in yards. We mention this so that if any of our people see a stranger viewing their premises closely in the next few days they may know what he is doing without having to consume his time in making explanations.

WANTED—UPRIGHT and faithful gentlemen or ladies to travel for responsible, established house in North Carolina. Monthly \$65.00 and expenses. Position steady. Reference. Enclose self-addressed stamped envelope. The Dominion Company, Dept. K. Chicago.

ON THE GO.

Names of People You Know

M. F. Turnage is quite sick.
Burwell Riddick went to Suffolk today.
Mrs. R. H. Horne went to Parmele today.
T. C. Wooten, of Snow Hill, was here today.
J. J. Satterthwaite, of Pactolus, was in town today.

District Attorney C. M. Bernard went to Raleigh today.

B. C. Pearce came in this morning from a trip down the road.

Sheriff W. H. Harrington went to Raleigh today to take Mr. Spencer Harris to the asylum.

Misses Willie and Sallie Boone, of Winton, who have been visiting Mrs. J. A. Dupree, returned home today.

Still a Mystery

The destruction of the battleship Maine in the harbor of Havana continues to be the absorbing topic of interest and discussion, but the cause of the disaster is still a mystery. Thursday's papers gave views of different government officials and prominent people in various parts of the country, but these are individual opinions drawn from reports that have come from the seat of the trouble. Many of these opinions lean to the side of accident, while others express the belief that Spanish treachery was at the bottom of it. The government has ordered an immediate expert investigation, and nothing short of the report on this investigation will give the true situation.

Lover's Mad Deed

SHELBY, N. C., Feb. 16.—Yesterday evening about nine miles from here, the saddest tragedy the county has ever known took place. Sid Grigg, 17-years-old, loved Ella Williams, aged 16. Young Grigg's love was unreturned, and Ella refused to run away and marry him. Yesterday evening while on her way home from school with two little brothers Griggs rose from the side of her path, where he was in waiting, and with a pistol shot his sweetheart through the breast. She fell fatally wounded, but, not satisfied, he shot her twice while lying on the ground dying. Then with the same pistol he blew the top of his own head off, and died at once. Both will be buried today in the same grave yard.

Both belonged to good families, and the tragedy has caused great sadness and sympathy.—Special to News and Observer.

The passenger train gets worse. It was an hour and a half late last night.

FOR SALE.

House and Lot. Six rooms, dining room and kitchen attached Good well water on lot J. J. CHERRY.

AT WHOLESALE ONLY.

- 50000 LBS MEAT,
- 3000 LBS LARD,
- 500 BARRELS FLOUR,
- 200 BOXES TOBACCO,
- 100 CASES BAKING POWDERS,
- 100 CASES SOAP,
- 100 CASES LYE,
- 100 CASES WASHING POWDERS,
- 25 SACKS COFFEE.

We also have in stock Sugar, Butter, Cheese, Canned Goods, Snuff, Wrapping Paper and Bags and many other things to numerous to mention. Send us your orders. Mail orders receive prompt attention. Agents for Standard Oil Co.

The Greenville Supply Co.

ELMWOOD DAIRY

We wish to inform our many friends and patrons that the capacity of Elmwood Dairy has just been very much enlarged and improved. We are now prepared to promptly fill all orders at the following prices, goods delivered at your door:
Elmwood Butter, . . . 25 cts a pound
Sweet Milk, 25 cts a gallon.
Sour Milk, 3 cts a quart.
Pure Cream, 25 cts a quart.

JAMES & WILEY BROWN, Proprietors.

R. L. DAVIS, Pres't. J. L. LITTLE, Cash er
R. A. TYSON, Vice-Pres. REORGANIZED JUNE 15th, 1896.

STATEMENT OF THE
The Bank of Greenville,
GREENVILLE, N. C.
At the Close of Business Dec. 15th, 1897.

RESOURCES.		LIABILITIES.	
Loans and Discounts	\$42,904.87	Capital stock paid in	\$23,000.00
Over Drafts	1,650.67	Undivided Profits	3,797.57
Premium on Stock	1,000.00	Deposits subject to Check	103,294.55
Due from Banks	44,598.00	Due to Banks	199.00
Furniture and Fixtures	1,515.25	Cashiers Checks outstanding	\$67.38
Current expenses	2,136.57	Time Certificates of Deposit	\$960.00
Cash Items	7,857.51		
Cash on hand	30,455.77	Total	\$132,118.61
Total	\$132,118.61		

We study carefully the separate needs of our patrons, and shall be glad to have your account, promising every accommodation consistent with good banking.

TO-DAY'S MARKETS.

As Reported by
The GREENVILLE SUPPLY CO.,
Cotton Buyers

Wholesale Grocers

Cotton sold in Greenville, 5 9-16

NEW YORK.			
COTTON	Opening	Noon	Close.
March	5.97 1/2	5.98	6.00
May	6.04	6.06	6.06
August	6.15	6.15	6.15
CHICAGO.			
WHEAT	Opening	Noon	Close
May	103 1/4	102 1/2	103 1/2
PORK.			
May	1112 1/2	1100	1095
RIBS.			
May	527 1/2	525	525

We have a large
STOCK OF
FALL AND WINTER
GOODS
just arrived. Come in
see us.

OATS HAY AND FLOUR

A SPECIALTY

J. C. COBB & SON

Here I Am!

I wish to inform my many patrons and the public that they can now find me in the

NEW - MARKET - HOUSE

where I am ready to cater to all their needs in the way of

TABLE SUPPLIES.

I keep the best Fresh Meats, Sausage, Fresh and Salt Fish, nice Groceries, &c. Send me your orders. Goods delivered promptly anywhere in town.

E. M. MCGOWAN.
Phone 41.

BOB GREENE & CO

UNDERTAKER

FUNERAL DIRECTORS AND EMBALMERS.

We have just received a new line of Caskets, in wood, metal and cloth ever brought to Greenville.

We are prepared to handle all its forms.

Personal attention given to conducting funerals and bodies entrusted to our care will receive every mark of respect.

Our prices are lower than ever. We do not want monopoly but invite competition.

We can be found at any and all times in the John Flanagan Buggy Co's building.

BOB GREENE & CO.



ESTABLISHED 1875
SAM M. SCHULTZ

—Dealer in—
Pork, Sides, Shoulders

Farmers and Merchants buying their year's supplies will find it to their interest to get our prices before purchase elsewhere. Our stock is complete in all its branches.

Flour, Sugar, Coffee

Always at lowest market prices

Tobacco, Snuff, Cigar

as we buy direct from manufacturers

A complete stock of

FURNITURE

always on hand and sold at prices to suit the times. Our goods are all bought and sold for CASH therefore, having no rise to run we sell at a close margin.

S. M. SCHULTZ.