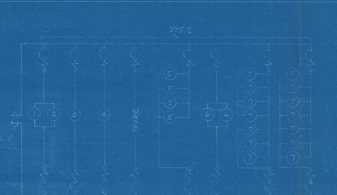
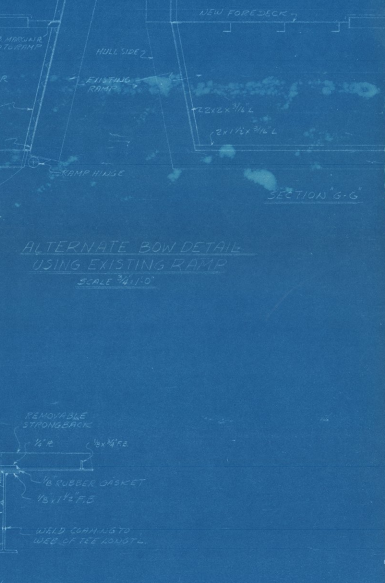
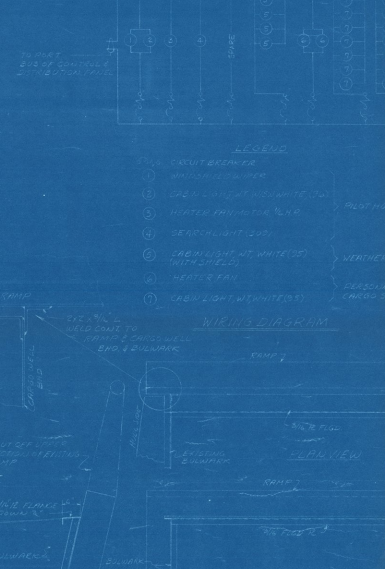
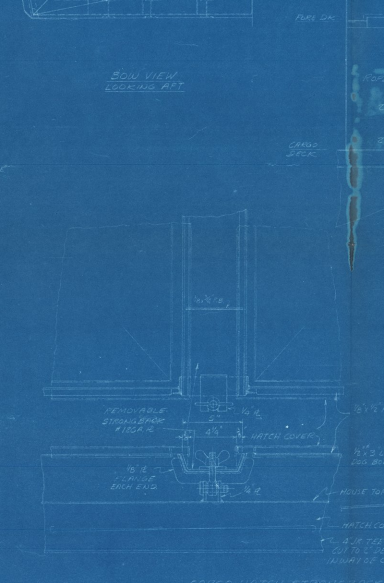
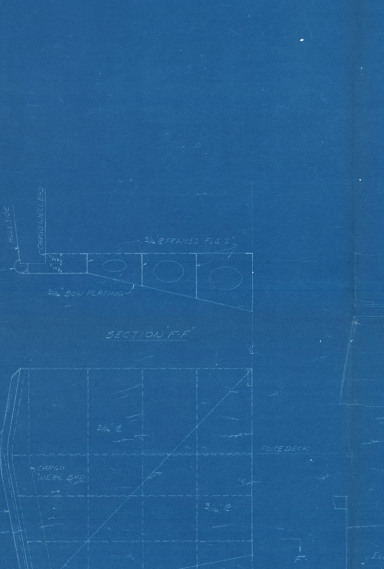
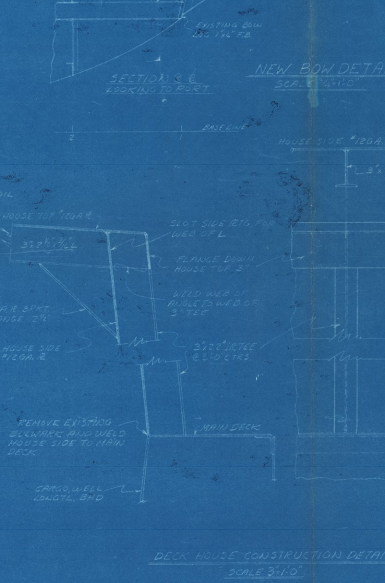
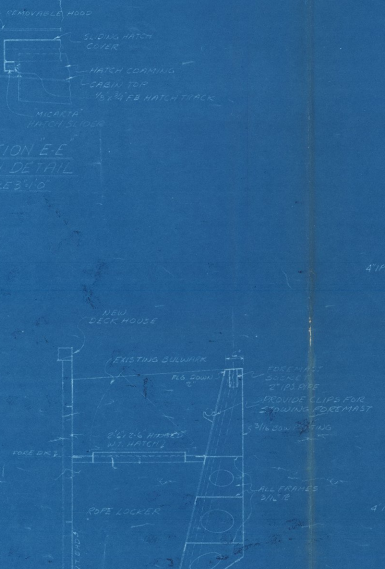
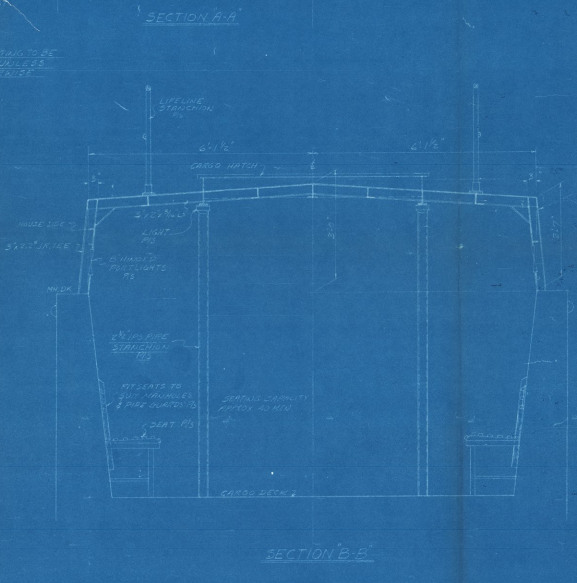
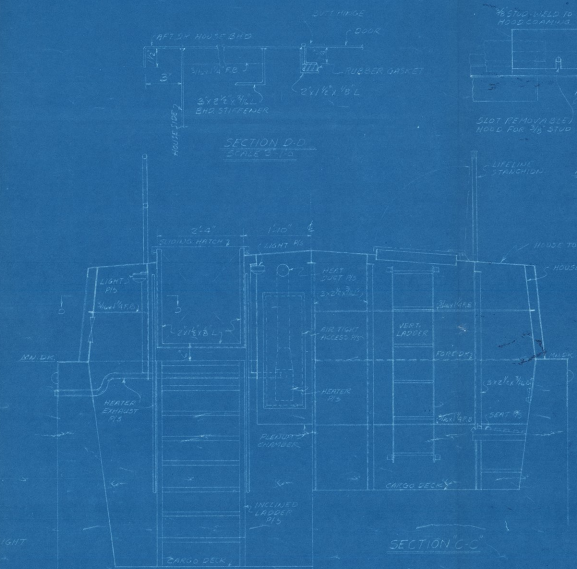


PROFILE
SCALE 1/4" = 1'-0"



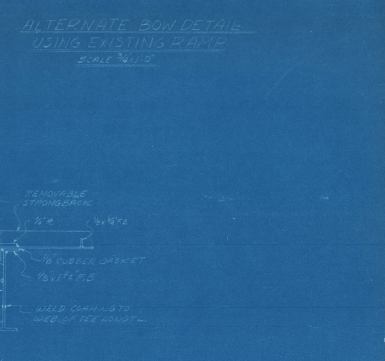
| REFERENCE | | |
|-----------|-------------------------|--------------------|
| NO. | TITLE | SHIP'S PLAN NUMBER |
| 1 | GENERAL NOTES | 2430336 |
| 2 | DECK HOUSE CONSTRUCTION | 2430336 |
| 3 | DECK HOUSE ELECTRICAL | 2430336 |
| 4 | DECK HOUSE MECHANICAL | 2430336 |

ELECTRICAL SYSTEM NOTES

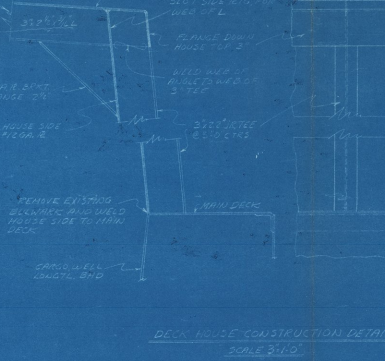
1. ALL ELECTRICAL WORK SHALL BE IN ACCORDANCE WITH THE LATEST EDITION OF THE NATIONAL ELECTRICAL CODE (NEC) AND THE NATIONAL FIRE ALARM CODE (NFPA).
2. ALL ELECTRICAL WORK SHALL BE DONE BY LICENSED ELECTRICIANS.
3. ALL ELECTRICAL WORK SHALL BE DONE IN ACCORDANCE WITH THE SHIP'S ELECTRICAL SYSTEM MANUAL.
4. ALL ELECTRICAL WORK SHALL BE DONE IN ACCORDANCE WITH THE SHIP'S ELECTRICAL SYSTEM MANUAL.
5. ALL ELECTRICAL WORK SHALL BE DONE IN ACCORDANCE WITH THE SHIP'S ELECTRICAL SYSTEM MANUAL.
6. ALL ELECTRICAL WORK SHALL BE DONE IN ACCORDANCE WITH THE SHIP'S ELECTRICAL SYSTEM MANUAL.
7. ALL ELECTRICAL WORK SHALL BE DONE IN ACCORDANCE WITH THE SHIP'S ELECTRICAL SYSTEM MANUAL.
8. ALL ELECTRICAL WORK SHALL BE DONE IN ACCORDANCE WITH THE SHIP'S ELECTRICAL SYSTEM MANUAL.
9. ALL ELECTRICAL WORK SHALL BE DONE IN ACCORDANCE WITH THE SHIP'S ELECTRICAL SYSTEM MANUAL.
10. ALL ELECTRICAL WORK SHALL BE DONE IN ACCORDANCE WITH THE SHIP'S ELECTRICAL SYSTEM MANUAL.

GENERAL NOTES

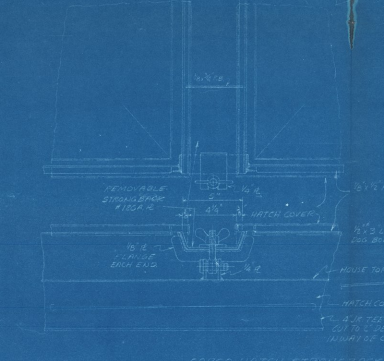
1. REMOVE EXISTING DECK HOUSE ON DECK 1.
2. REMOVE EXISTING DECK HOUSE ON DECK 2.
3. REMOVE EXISTING DECK HOUSE ON DECK 3.
4. REMOVE EXISTING DECK HOUSE ON DECK 4.
5. REMOVE EXISTING DECK HOUSE ON DECK 5.
6. REMOVE EXISTING DECK HOUSE ON DECK 6.
7. REMOVE EXISTING DECK HOUSE ON DECK 7.
8. REMOVE EXISTING DECK HOUSE ON DECK 8.
9. REMOVE EXISTING DECK HOUSE ON DECK 9.
10. REMOVE EXISTING DECK HOUSE ON DECK 10.



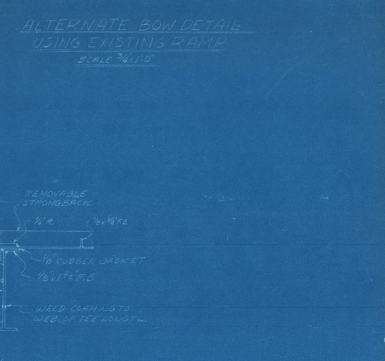
ALTERNATE BOW DETAIL USING EXISTING BOW
SCALE 3/4" = 1'-0"



NEW BOW DETAIL
SCALE 3/4" = 1'-0"



DECK HOUSE CONSTRUCTION DETAIL
SCALE 3/4" = 1'-0"



CARGO HATCH STROGHBACK DETAIL
SCALE 3/4" = 1'-0"

2430336

| DEPARTMENT OF THE NAVY | | BUREAU OF SHIPS | | WASHINGTON, D. C. | |
|------------------------|--|---------------------|--|---|--|
| DRAWING | | LAYOUT OF SHIPS | | CONVERSION TO PERSONNEL AND CARGO CARRIER | |
| OFFICIAL SIGNATURE | | DATE | | DATE | |
| APPROVED | | DATE | | DATE | |
| CONTRACT | | BUREAU OF SHIPS NO. | | REV. | |
| GUIDANCE PLAN | | LCM 6 145 2430336 | | 1 | |
| | | SCALE - AS NOTED | | | |

LCM(6) C 53943, 935, 69692 + 468

1960