

CONTINUES FROM PREVIOUS PAGE

with despair. "It's like looking at a murder," Quentrell Jefferson said as he watched the news at a church in Lafayette, 125 miles west of New Orleans. "The first time is bad. After that, you numb up."

The water poured over and through sandbags, gravel and soil that had been used to temporarily patch breaks in the Industrial Canal levee, said Dan Hitchens, a spokesman with the Corps of Engineers. Around mid-afternoon, he said the water did not appear to be rising anymore.

He said that the Corps could not immediately reach the spot to repair it, but that pumps would be turned on to help remove the water.

Col. Richard Wagenaar, Corps of Engineers district chief in New Orleans, said the overtopping of the levees would set back repairs at least three weeks. He said, nevertheless, June is still the target for getting the levees back to pre-Katrina levels.

The breach came as Rita began lashing the Gulf Coast with rain and wind and up to 500,000 people in southwestern Louisiana headed north on jammed roads. State police said flooding in coastal Lafourche and Terrebonne parishes forced street closings by midday.

Rita was expected to come ashore early Saturday somewhere near the Texas-Louisiana line. There were fears it would stall, dumping as much as 25 inches of rain.

Forecasters said the hurricane could bring 3 to 5 inches of rain to New Orleans - dangerously close to the 6 inches Army engineers say could overwhelm the patched levees. Another fear was that a strong storm surge would push water through the walls.

Because of the approaching storm, authorities called off the search for bodies, and Katrina's death toll across the Gulf Coast stood at 1,078, including 841 in Louisiana.

A mandatory evacuation order was in effect for the part of New Orleans on the east bank of the Mississippi, including the Ninth Ward. A spokeswoman for Mayor Ray Nagin said officials believed the neighborhood had been cleared of residents.

Just to the east, St. Bernard Parish - heavily flooded by Katrina - water from the new breach was threatening from one side and a storm surge along a bayou was lapping at the top of a levee on the other.

Mark Madary, a St. Bernard Parish councilman, said houses that were under 12 feet of water after Katrina would probably get an additional 3 feet. He accused the Army Corps of Engineers of not rebuilding the levee properly. "Everybody's home's been crushed, and let's hope their dreams aren't," he said.

Associated Press writers Michelle Roberts and Mary Foster in New Orleans, Julia Silverman in Lafayette, La., and Doug Simpson in Baton Rouge, La., contributed to this report.

LAST LINE OF DEFENSE: HOPING THE LEVEES HOLD

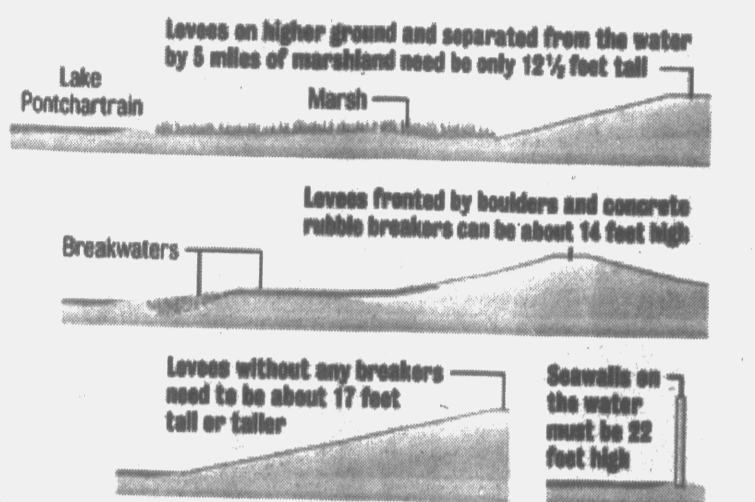
Army Corps of Engineers officials say hurricane levees in the New Orleans area will protect residents from a Category 3 hurricane moving rapidly over the area. But computer models indicate even weaker storms could find chinks in that armor.

BARRIERS OF EARTH AND CONCRETE

Levees and floodwalls that protect against flooding from both the Mississippi River and hurricanes are built by the Army Corps of Engineers and are maintained by local levee districts. The corps and the local districts share the construction cost of hurricane levees, while the Mississippi River levees are a federal project. Local levee districts also build and maintain nonfederal, lower-elevation levees with construction money from each district's share of property taxes and state financing.

HEIGHT ISN'T EVERYTHING

Different factors permit Lake Pontchartrain levees of varying elevations to withstand an 11 1/2 foot storm surge plus several feet of waves:



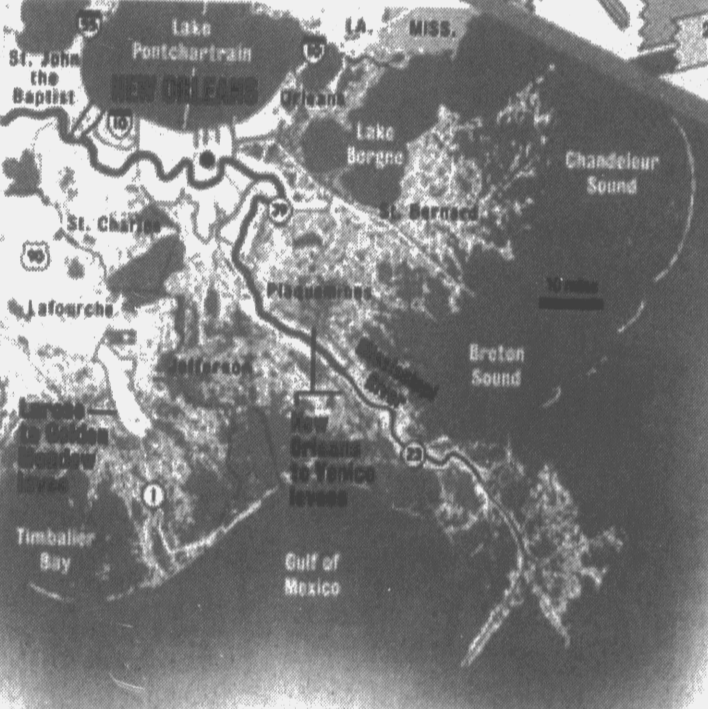
LEVEES AND FLOODWALLS

- Mississippi River
- Hurricane protection
- Interior parish

Notes: Levee and floodwall elevations are drawn with an extremely exaggerated vertical height but are in proportion to each other. Numbers on specific sections represent average heights in feet above sea level.



THE LEVEE SYSTEM:



FARTHER SOUTH

Residents and businesses in developed areas along bayous and the Mississippi River have successfully argued that the benefits of building levees around their communities outweigh the costs of construction.

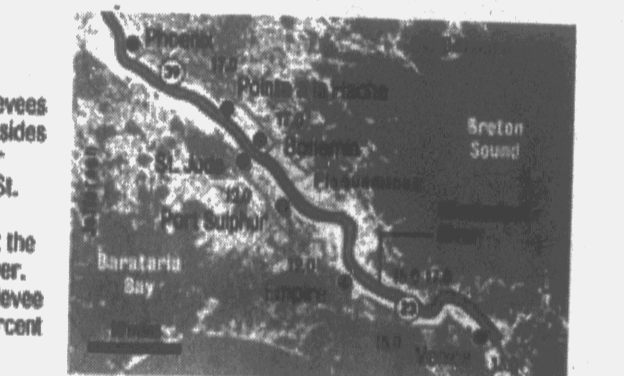
LAROSE TO GOLDEN MEADOW LEVEE

This 40-mile ring levee encircles residential and commercial developments along Bayou Lafourche. Parts of the levee are being raised to counteract subsidence.



NEW ORLEANS TO VENICE LEVEES

There are 37 miles of levees in this project on both sides of the Mississippi River between Phoenix and St. Jude to the north and Bohemia and Venice at the southern end of the river. Different pieces of the levee are 60 percent to 99 percent complete.



LEVEE HOT SPOTS AROUND NEW ORLEANS:

1 ST. CHARLES PARISH



Construction of a new drainage structure west of Louis Armstrong International Airport is part of an incomplete 10-mile levee from the Bonnet Carre Spillway to the parish line, five miles inland from Lake Pontchartrain. Computer models indicate storm surge from smaller hurricanes would flood populated areas toward the river through gaps.

2 ST. CHARLES-JEFFERSON PARISH LINE



This 5-foot to 10-foot wall of sandbags and sheet piling runs south of Airline Drive to the Mississippi River levee near the airport. Surge water from the lake could pool along the river levee and pour over this barrier into Jefferson Parish and New Orleans, according to computer models.

3 WEST BANK



More than 60 miles of levees and floodwalls from east of the Harvey Canal to west of Lake Cataouatche - including this stretch of completed floodwall and yet-to-be-raised levee along Bayou Segnette State Park - are years from completion. Small hurricanes can push water from Timbalier and Barataria bays into West Bank neighborhoods.

4 JEFFERSON-ORLEANS PARISH LINE



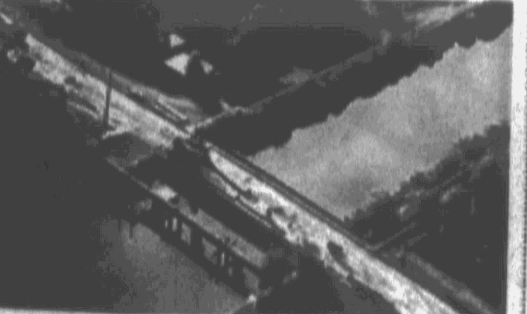
Chesterfield Street passes through a low levee from Monticello Avenue in Jefferson Parish into New Orleans near the city's water plant. Computer models indicate this is the likely spot for floodwater to enter the city from St. Charles and Jefferson parishes during hurricanes.

5 JEFFERSON-ORLEANS PARISH LINE



The Hammond Highway bridge over the 17th Street Canal is being replaced with a new, hurricane-resistant structure. Huge sandbags are kept nearby to plug this hole in the hurricane protection for Jefferson and Orleans parishes.

6 NEW ORLEANS



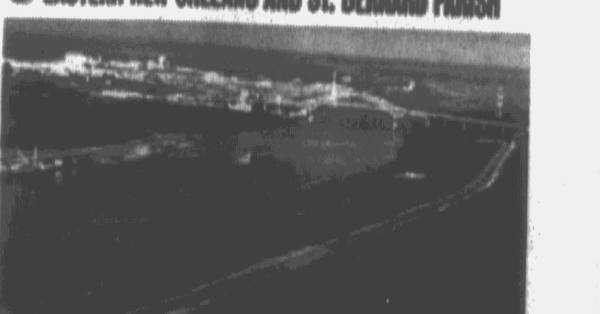
The Filmore Avenue bridge over the London Avenue Canal is being replaced with a new span with floodwalls. Until its completion, only sandbags will stop hurricane surge from pouring into city neighborhoods.

7 ST. BERNARD-PLAQUEMINES PARISH LINE



A computer model indicates storm surge could overtop a V-shape area where levees meet at the parish line near the Caernarvon Freshwater Diversion Project along the east bank of the Mississippi River.

8 EASTERN NEW ORLEANS AND ST. BERNARD PARISH



Computer models indicate surge from Lake Borgne might rise in the Mississippi River-Gulf Outlet and overtop New Orleans levees near the Paris Road bridge and a section of levee in St. Bernard during a hurricane.

Community Voices

From the Desk of Mrs. Beatrice Maye



Mrs. Beatrice Maye
LEADERSHIP

"Leadership" is a word on everyone's lips. The young attack it and the old grow wistful for it. Parents have lost it and police seek it. Experts claim it and artists spurn it, while scholars want it.

Philosophers reconcile it (as authority) with liberty and theologians demonstrate its compatibility with conscience. Everybody agrees that there is less of it than there used to be. Leadership is the pivotal force behind successful organizations and that to create vital and viable organizations, leadership is necessary to help organizations develop a new vision of what they can be, then mobilize the organization change toward new vision. Some great leaders are Moses, Pericles, Julius Caesar, Jesus Christ, Gandhi, Dr. Martin Luther King, Jr., Archbishop Desmond Tutu, Nelson Mandela, and Winston Churchill among many others. Management vs. Leadership: Managers are people who do things right and leaders are people who do the right thing. Let's get rid of management! People do not want to be managed. They want to be led. Ask your horse. You can lead your horse too water, but you cannot

manage him to drink. If you want to manage someone, manage yourself. Do that well and you will be ready to stop managing. And start leading. Leadership involves communication. Communication creates meaning for people. It is the only way any group, small or large, can become aligned behind the overarching goals of an organization. Talent, genius, education will not make leaders, but persistence and determination are omnipotent. Leaders might use five skills:

1. The ability to accept people as they are, not as you would like them to be.
2. The capacity to approach relationships and problems in terms of the present rather than the past, though we can learn from the past.
3. The ability to treat people who are close to you with the same courteous attention that you extend to strangers and casual acquaintances. We tend to take for granted those to whom we are closest.
4. The ability to trust others, even if the risk seems great.
5. The ability to do without

constant approval and recognition from others. It should not really matter how many people like leaders. The important thing is the quality of work that results from collaborating with them. It is the large part of a leader's job to take risks. To the successful leader, failure is a beginning, the springboard of hope. To worry puts obstacles in the way of clear thinking.

Effective leadership negates protest, grievance, and career change as well as resignation and apathy. Lao Tzu said, "To lead, we must follow."

Practice Advice for Daughters

Perennial advice for teenagers preparing to go to college -

See Mrs May Page 11

North Carolina Central University Rolls Out New Eagle Logos

DURHAM, NC - North Carolina Central University (NCCU) unveiled its new eagle logo designs Friday during a celebration that included music, food and fun.

"The NCCU Eagles will enter the 2005 season with a fresh new mascot design to reflect the energy, enthusiasm and confidence of an institution on the rise in a dynamic city and state," said Chancellor James H. Ammons.

In support of NCCU's new logo designs, a total of 14 restaurants in the Durham and Chapel Hill areas, helped to promote the new logos by having their staff wear T-shirts on Friday.

The participating restaurants included: Chicken Hut, Burger King, Symposium Cafe, Golden Corral, Kentucky Fried Chicken, Carolina Ale House, Roy's Country Kitchen, Idea's Coffee House, Amante Gourmet Pizza, Dillard's Bar-B-Que, O'Charley's and Mama Dip's Kitchen.

In 2004, Ammons appointed a committee to develop a new eagle mascot design. The charge of the Committee, chaired by Sharon Saunders, special assistant to the chancellor for Public Relations, and Atty. Kaye Webb, university general counsel, was to develop a design that NCCU constituents and the general



Greenville Mayor Don Parrot and East Carolina University's Chancellor, Dr. Steve Ballard flank Dr. Sallye McKee the new assistant to the Chancellor for Institutional Diversity at the university during a recent affair to officially welcome Dr. McKee on board.

public would like and identify with as being a symbol or trademark of NCCU athletics and the university.

Before each meeting, committee members were asked to share each round of proofs with their colleagues for discussion at the meet-

ings. This new mascot design is intended for use as a coordinating symbol for all sports-related and school spirit activities of the University. The seal remains the university primary logo.



Left to right: Renee Clark, president, NCCU's student government association; Mr. Cressie H. Thigpen, NCCU Board of Trustees member; Mrs. Kay T. Thomas, NCCU Board of Trustees member; Mr. Robert C. Williams, chairman, NCCU Board of Trustees; Chancellor James H. Ammons; Mr. William "Bill" Hayes, NCCU's athletic director; Mr. William "Bill" Bell, mayor, City of Durham; Mr. William G. Smith, member of the UNC Board of Governors; Ms. Norma D. Perway, director, NCCU's office of alumni relations; and Dr. Beverly Washington Jones, provost and vice chancellor for academic affairs, present NCCU's new eagle logos.

Tuskegee Airmen: Still Making a Difference

"Tarboro Resident Milton Bullock-The Golden Platter takes Airmen on a journey down memory lane"

ORLANDO, FL - For those attending the Tuskegee Airmen's 34th National Convention August 19th, it was un-like any they'd seen in many, many years and Milton Bullock was there to witness the historical event. As for Bullock, a resident of Edgecombe County, NC and one of the original members of the Platters who now resides in Tarboro it became a lifetime event.

Bullock recently became an honorary member of the Wilson V. Eagleson Tuskegee Airmen Chapter of Goldsboro and was the featured celebrity guest performer for the occasion along with famed millionaire attorney Willie Gary, who was the featured keynote speaker.

With some 88 surviving Tuskegee Airmen of the original legendary 992 attending, this year's grouping was comprised of pilots, operation officers, intelligence officers, meteorologists, engineering officers, flight surgeons, aircraft and engine

mechanics, armament specialists, radio repairmen, parachute riggers, con-

for their rooms. But after relishing this "feaster" they decided to stay late and



Bullock



trol tower operators, and administrators and others that formed support services for the air force squadron. That night, these African American WWII heroes would get their treasured memories rekindled with the selected, nostalgic music Bullock had planned for them.

Bullock would dedicate his very first song (performed a cappella style) to all the women, wives and widows with an old "Ink Spots" favorite—"To Each His Own". Traditionally, right after the awards keynote speaker segment, they usually make a straight line

enjoy the entertainment.

The proof was in the pudding as they say; for there were so many senior couples on the floor in their 60's, 70's and 80's even the young folk in attendance were startled with amazement. Coordinator for the 2005 Tuskegee Airmen Convention, Col. Len Nevels, (USAF), said — "that seeing this (our elderly enjoying the moment) was more enjoyable than the awards segment." Bullock said that the event "would be

See Tuskegee Page 11



Re-Elect Pat Dunn

City Council At-Large Seat

Working for All of Greenville

Paid for by Shirley Martin, Treasurer, Campaign to Elect Pat Dunn



To Buy, Rent, or Sell Real Estate, Call the...

D. D. Garrett Agency

"Serving Eastern North Carolina Since 1946"

Call us if you need someone to collect your rent and manage your property. Several nice building lots...

We handle Conv., HUD, VA, FHA Financing Realtor • Notary Public • Accounting

606 Albemarle Avenue

Greenville, NC 27834

(252) 757-1692 or (252) 757 - 1162

Fax Number (252) 757-0018



Hamilton Inn & CONFERENCE CENTER

830-4800

Affordable Housing Rates
Weekly \$175.00 Daily \$32.95
Pay As You Go... No Lease To Sign... No Credit Check...

- Spacious Fully Furnished Rooms with Private Baths
- Telephone, Cable with HBO
- All Utilities
- Free Parking
- Indoor Heated Pool & Courtyard
- Maid Services

GUESTS COMING FOR THE HOLIDAYS??
Now is the time to reserve your rooms - Deposit required

COLLEGE STUDENTS WELCOMED!

702 S. Memorial Drive Greenville, NC 27834
Ofc: (252) 830-4800 Fax: (252) 758-1284 Web: www.hamiltoninnnc.com

"Our Banquet Facilities are ideal for Business Meetings, Wedding Receptions, Graduations, Events, Family Reunions, Frat & Sororities Functions or any Festive Occasions..."



CAROLINA EAST MALL LOCATION ONLY!

STORE CLOSING!

ALL CLEARANCE NOW

60% OFF

LOWEST TICKETED PRICE

PLUS 3 DAYS ONLY (Now Through Sat!)

SAVE AN EXTRA... 10% OFF

All Clearance Dresses, Ladies' Designer, Better & Moderate Sportswear, All Clearance Home Decor

Famous Maker Knit Top Original \$35.00 Ticketed \$16.00 YOU SAVE \$19.00

NEW PRICE CUT

50% OFF

LOWEST TICKETED PRICE

All Comforters, Duvets, Bed In A Bag, Throws and Decorative Pillows

NEW PRICE CUT

50% OFF

LOWEST TICKETED PRICE

Ladies' Sandals & Hosiery, Men's & Ladies' Athletic Shoes, Men's Sandals, All Kid's Shoes, and Men's Dress Shirts

NEW PRICE CUT

60% OFF

LOWEST TICKETED PRICE

All Jewelry, Men's Ties and All Men's Accessories

ENTIRE STORE AT LEAST... 40% TO 60% OFF

EXCLUDES COSMETICS, FRAGRANCES & SELECTED VENDORS

THIS LOCATION ONLY
CAROLINA EAST MALL
HWY. 11 • GREENVILLE

STORE HOURS: MON.-SAT. 10AM-9PM
SUN. 1-6PM

We accept Visa, MasterCard, American Express, Discover and Belk Card. All Sales Final. Cosmetics, Fragrances and Watches in Fine Jewelry are excluded. Promotions and coupons advertised for on-going Belk stores will not be accepted at this location. We will accept returns on merchandise sold prior to 8/1/05 with receipt. We will no longer be able to offer alterations, gift wrap and charge card.