

# THE 'M' VOICE

FREE

What You See Is, Is What You Get, What You Read Is What You Know & Save — Eastern North Carolina's Minority Voice

GREENVILLE, NORTH CAROLINA 27834

THURSDAY SEPTEMBER 15-WEDNESDAY, SEPTEMBER 21, 1988-THE 'M' VOICE

## Marriott settles for \$40 grand in cornrow braided hairstyle dispute

By JESSE H. WALKER

A Black reservations agent at the JW Marriott Hotel in Washington, D.C. who was almost fired for refusing to un-braid her cornrow hairstyle has received \$40,000 in damages from Marriott Corp., settling a discrimination complaint filed with the D.C. Office of Human Rights.

Marriott paid the money to Pamela Mitchell late last month, according to The Washington Times, which obtained a copy of the settlement agreement. The hotel corporation also agreed to pay an additional

\$15,000 in legal fees to Eric Steele, an attorney for Mitchell. "It sends a signal that has to be welcomed to the civil rights community. When a corpor-

ation is held financially accountable, we hope that has a chilling effect on other corporations who might engage in similar practices," said Colleen O'Connor, a spokeswoman for the American Civil Liberties Union headquarters offices here in New York City.

"She (Mitchell) was humiliated and part of the damage assessment has to be the duress she was put under," said O'Connor.

The four-page agreement ends a controversy sparked in December when Mitchell was told to remove her cornrows, a multi-braided hairstyle worn primarily by Black women, or face termination on Christmas Eve. After Mitchell filed a complaint with the Human Rights

Office, Marriott told her she could keep her part-time job and reversed its anti-braid policy.

In April, however, the D.C. agency ruled that there was cause to believe that Marriott had unlawfully discriminated against Mitchell and other female employees by refusing to let them wear cornrows. The ruling was believed to be the first in the nation to deal with the issue of whether anti-cornrow policies are discriminatory.

In exchange for receiving the monetary damages, Mitchell has agreed to withdraw the discrimination complaint and refrain from pushing the issue in court.

Under the settlement, Marriott also is required to clarify to all employees at the JW Marriott the policy of allowing corn-

rows by posting notices on bulletin boards and stuffing notices in payroll checks.

Hyatt Hotels & Resorts also is embroiled in controversy over cornrows. In May, the U.S. Equal Employment Opportunity Commission ruled that Hyatt discriminated against Black women by carrying out such a policy, a policy the Hyatt hotel chain reversed last fall.

The EEOC ruling stemmed from a complaint filed by Cheryl Tatum and Cheryl B. Parahoo, two former employees at the Hyatt Regency Crystal City who were told to remove their cornrows or wear a wig. A settlement conference between Hyatt and the former employees is scheduled later this month, according to their lawyer.



**NOT JUST ANOTHER TRUCKER!** . . . Mr. Curtis Cummings, President and Chief-Executive Officer of Cummings Trucking Company may service the entire United States with his trucks, but still finds the time to spend with his lovely wife, the former Phyllistine Morgan of Fountain. The couple resides in Greenville and were seen recently at a social gathering in Pitt County. Cummings Trucking Company has the newest high-tech 18-wheelers on the road and will pick-up and deliver anywhere in America. Blow that horn Bro. Cummings and yall keep on truckin'!!

## Shaw University receives Omega Psi Phi Fraternity award

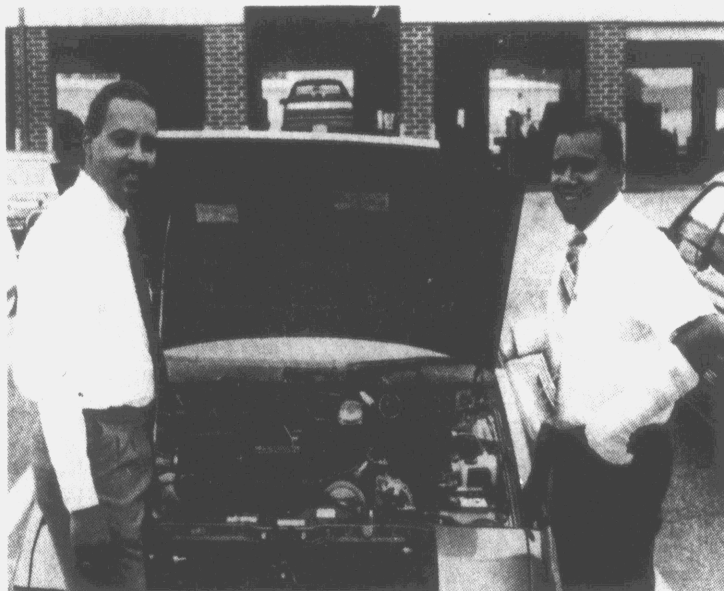
The 65th Grand Conclave of the Omega Psi Phi Fraternity, Inc., convened in Dallas, Texas July 23-29, 1988. The theme for the week's deliberations and activities was "The Family, education, economics and citizenship empowered by our cardinal principles"—Manhood, Scholarship, Perseverance and Uplift.

Sunday, July 24, 1988 was declared "Salute to Historically Black Colleges and Universities Day." The recognitions were made to extol the historically black colleges and universities for their education of thousands of Americans, including many Omega members who have made substantial contributions to the betterment of mankind, to treasure historically black colleges and universities that have continually elevated thousands of persons who otherwise would not have received a post-secondary education and to compliment these institutions that sometimes do not receive the admiration,

support, respect and recognition which is due them for the tremendous contributions they have made to America and to the world.

Dr. Talbert O. Shaw, president of Shaw University, accepted a plaque presented by the fraternity on behalf of Shaw University which reads, in part, "For significant contributions to the education of Black Americans—and to the betterment of mankind as a whole."

When asked about this signal honor, Dr. Shaw said, "The Omega Psi Phi Fraternity was the first fraternity founded on an historically black college campus and has been at the vanguard of financial support for black higher education. I accept this plaque with sincere appreciation and gratitude and dedicate myself to the perpetuation of the goals of this fraternity. I hope that other Afro-American organizations will continue this example set by the Omega Psi Phi Fraternity."



**WE'VE GOT WHAT YOU NEED** . . . When it comes to cars at Joe Cullipher Subaru, Brother Freddie White, left, who is the service manager; and new car salesman John Deaver can fix you up with the right kind of car and the right kind of deal with the right kind of service when you need it. Bailey Tucker (not pictured) can tell that these brothers are right ON! time when it comes to having a fresh ride. Call or come by Today!!

## The Black Preachers and the Black Church must play their rightful roles

By Jim Rouse

If Black America is to be saved, the Black Preachers and the Black Church will have to assume their rightful roles.

The gospel of right and wrong must be preached and lived from the pulpit. We live in an era of "Monkey see, monkey do."

The Black Preacher must speak out against the moral decay of our society. They must tear down the mistaken notion that anything goes. We must as Church people proclaim the truth and not deny that we need to be revived and turn back to God in fullness and rededication.

We must be willing to let Black folks understand that there is no "Big I's" or no "little you's" in the

sight of God for out of one blood we were all created.

It's amazing that we see wisdom every day and still do not understand what is happening in this life. Simply stated no man is above or beneath another man. We all come into the world with nothing and we will take nothing with us.

Believe it or not, but I have never seen a Brinks Truck following a hearse to a cemetery.

Black folks remember when you respect yourselves and each other; let's teach our children to respect authority. Let us stop being instruments of disharmony and become instruments of peace.

Let us build up, not tear down, let us become real neighbors and watch out for each other.

Black Preachers you have the power or so you say that you have, so use it to chase the dope pushers out of the Black community.

Protect our children from the pitfalls that are waiting to destroy them by educating the parents and the congregation.

Black church, become a power house of prayer. Do not be ashamed to call a spade. Teach Black parents to let their children be children. Stop dressing eight, nine and ten year olds as if they were adults.

Give your girls dolls to play with that they can put on a shelf.

We cannot afford for our little girls to continue to have babies before wisdom. We must train our sons that they are just as responsible for a new life coming as the girl that they have violated. Speak out against these old men that prey on our youth. It is our business, because we are our brothers' keeper.

## Warren attends Legislative Study Committee meeting

Representative Ed N. Warren attended the Legislative Study Committee meeting on Tourism's Growth and Effect in Boone. The topics discussed were:

1. The possibility of establishing regional director positions within the Division of Travel and Tourism to serve as liaisons between the state and local chambers, travel bureaus, and tourism development authorities.

2. The need for additional funds to support North Carolina state parks.

3. The feasibility of creating permanent tours within various regions of the state, such as a governor's tour of the east to

highlight homes of former North Carolina governors.

4. The need for more welcome centers in highly traveled areas.

5. The importance of improvements to North Carolina's highways, airports, ferries and bridges.

Among those who made presentations to the committee were Hugh Morton, Sr., owner of Grandfather Mountain, Robert Sand, Vice-chancellor of Development at Appalachian State University, and Tony Seamon, Chairman of the State Travel Council. Representative Warren is chairman of the House Committee on Tourism and Growth.

## Letter to the Editor

To the editor:

Your Sunday editorial comment titled "Vigilance" may have been an accurate assessment given from the point of view of a non-participating third party. But the idea at the Pitt County Board of Elections monitoring itself isn't practical from the standpoint of those of us who worked hard to win an election only to have its results nullified by sloppy and careless administrative procedures. Federal observers during the Oct. 11 runoff would ensure some degree of added trust in the process. What harm could that do? And, besides, why should voters put their total trust in our board after all that has been revealed about its handling of the previous election?

The comments in the editorial which discount the possibility of racial bias as a factor in the electoral process are predictable and difficult to refute. Racial bias, by its very nature is extremely hard to prove, even when clearly recognized.

In your previous editorials, support for a new election was made clear. I would have thought that any measures intended to ensure fairness in the new election, including federal observers, would attract your support as well. From the perspective of a participant, believe me, if ever federal observers were needed to help restore faith in local balloting, now is the time.

Michael Garrett, campaign manager  
Committee to Elect D.D. Garrett County Commissioner

## Is Sheriff Tyson senile?

By C. A. Dawson

The story begins when a jilted lover whose ex-girlfriend is working at the Pitt County Sheriff's Department calls the sheriff's department and wants to speak to no one but Sheriff Ralph Tyson. He explains to Sheriff Tyson that one of his married deputies is in bed with his dispatcher.

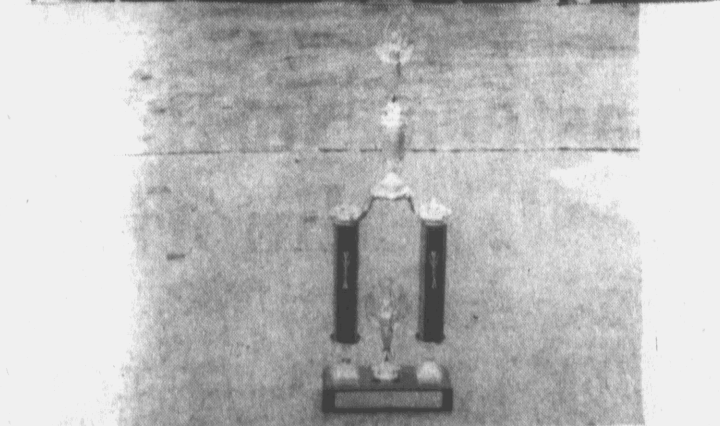
The sheriff then asks this man to show him to the home of the

young lady so he can see for himself if this is true. The sheriff and the informant arrive at the young lady's home but they find nothing. Upon leaving the premises, the informant breaks out the young lady's car window while the sheriff watches. The young lady goes to take out a warrant but is fired from the department.

Unbelievable, but a true story.



**CONCERNED** . . . (from left to right) Brother James Chapman; Greenville City Councilwoman, Lorraine Shinn; Jim Polk, Assistant to Governor Martin; and Carl Byrd are shown at a recent gathering of key black folks expressing their needs for the Eastern NC Region during this year's election. Black folks will play a vital role in electing the right candidates. If we are to move ahead into the next century, we will have to vote the right folks into office and these people are concerned.



**BRINGING HOME THE GOLD** . . . The Isserettes are shown at the Greenville Trailways bus station returning from their trip out west to compete in the national competition. The trip was successful for our young ladies. They took third place out of one hundred or more competing for trophies and cash prizes. The Black Community should feel very proud of these young ladies. We salute you. May the future be bright for each of you and the parents who encourage them.





The  
Mrs. Beatrice  
Maye Column

Lateness and absenteeism are two of industry's biggest problems. Anyone who knows a sure cure for them could sell the secret and retire in luxury. It's hard enough to schedule work efficiently even when everyone shows up. And when people are unexpectedly late or absent, adjustments have to be made at the last minute. These makeshift

changes are usually costly and inefficient. There is, of course, no final solution. Like death and taxes, lateness and absenteeism will always be with us. Nevertheless, there are things a supervisor can do to minimize the problem. One is to be sure, through personal contact and explanation, that everyone appreciates the prob-

lems that lateness and absence create. Some people believe it's nobody's business but their own. They must be helped to see that their actions affect the entire group, that they are part of a team. When they are late or absent, they're letting the others down. It's important too for the person who supervises others to practice promptness and regularity as well as preach them. Regular hours set a good example for everyone. Employees feel better about complying when they know that what's good for the gander is good for the goose, too. Also, take more time to appreciate the work people do when they are not absent. Show them how much you count on them. People who feel needed and wanted, who know that their presence on the job is important, are less apt to be late or absent. If excessive lateness or absenteeism continues, probe for deeper reasons. Is the job too boring? Has it lost its challenge? If so, what can you do to remedy the situation? You will never solve these problems completely. You can, however, develop a constructive approach that holds them to a minimum. "It is one of the most beautiful compensations of this life that no man can sincerely try to help another without helping himself". Emerson How do you motivate people to produce, to do a better job? The answer, say motivational experts, is by fulfilling these five needs: ....Economic security. Workers

should feel that their time and effort will be fairly rewarded. ....Emotional security. Management must create a climate in which employees "trust" their superiors, and feel that their jobs contribute to a worthwhile goal. ....Recognition. Employees should feel that good work will be appreciated and praise. ....Self-expression. We live in a democracy and none of us should feel that we surrender that heritage when we enter our place of employment. Employees should have the right to communicate ideas, suggestions, fears, and opinions to their superiors without fear of retaliation ....Self-respect. This is imply the need to be treated as an individual, as a human being, not a statistic. When You ask people to do something, be sure to also tell them why. It's well worth the time and effort. It's very easy for a busy person to fall into the habit of simply telling people to do things without further explanation. It seems like the quickest and easiest way to get things done. But it's rarely the best way. When you ask someone to do something, take time to explain why. It's excellent habit with a lot of good side effects. Explaining why you want something done automatically removes the curse of "bossiness". When there's a good reason why something ought to be done, it puts you in the position of simply making a logical, reasonable request. It completely removes the bad taste that comes from "ordering people around". When you explain why, you also lessen the chance of error. People who understand why they're doing something are less apt to foul it up.

And if the situation changes, so that the action is no longer required, they'll have sense enough to stop. If they don't understand, they'll have no choice but to go blindly ahead doing what you told them to. Explaining the reason for your request is a compliment to the people you've asked to carry it out. It shows that you think it's important that they..should understand what they're doing and be able to use their heads. You also put them in a position to make suggestions, and these can be very helpful. People aren't robots or push buttons. The more you can trust them like intelligent human beings with good brains in their heads, the better results will be. Sure, there are times when the reason is so obvious to everyone that it isn't worth mentioning. And there are also times of emergency when people have to do what they are told and pronto! But the general rule still stands: "When you ask someone to do something, explain why". "God gave us two ears but only one mouth. Some people say that's because he wanted us to spend twice as much time listening as talking. Others claim it's because he knew listening was twice as hard as talking. "Team spirit is what gives so many companies an edge over their competitors". George L. Clements "Quality is never an accident: it is always the result of intelligent effort". John Ruskin Fr: The Economics Press

**Greenville alumna re-elected president of honor society**  
Ann E. Garrett Robinson, of New Haven, Connecticut, has been reelected national President of Psi Beta, the honor society in psychology for community and junior colleges. Dr. Robinson is professor of psychology at South Central Community College in New Haven, Connecticut. The mid-August announcement was made by Psi Beta officials in Atlanta at a meeting held jointly with the meeting of the American Psychological Association. "I look forward to working closely with the APA and all national organizations that address the needs of our psychology students and of our sponsoring psychology faculty members in community and junior colleges." Dr. Robinson said. During her first term as president, Robinson:: successfully guided Psi Beta to affiliation with the American Psychological Association. Affiliation talks were also opened with the American Association of Community and Junior Colleges. Psi Beta, Inc., is a federation of college societies that promote student interest in psychology. Before becoming national president of Psi Beta in 1987, Robinson served two terms as vice-president of the northeastern reunion. Robinson was first appointed to South Central Community College in New Haven in 1972. She is currently on leave and a postdoctoral research fellow in Afro-American Studies at Yale University. During the Psi Beta meeting in Atlanta, President Robinson presented the Founders Day awards to a psychology student in Iowa for outstanding community service and to a psychology student in California for outstanding empirical research. "These awards honor our founders, Ruth Cousins and Carol Tracy," Robinson said. "They bear witness that we remember our heritage, value good psychology teachers, and recognize excellence in our psychology students." Robinson herself received the Meritorious Teaching Award from the state of Connecticut in May 1988, an honor that carried a thousand-dollar consideration. Robinson recently assembled materials on the life and times of the Reverend Charles D. Walker, a figure in the Harlem renaissance of the 1930s and "the first black man on Wall Street." A ceremony in November 1988 marked the deposition of this Walker Collection at the Schomburg Center of the New York City Public Library. Robinson is also the author of the musical play "Clowns and Clouds of Destiny". A lyrical evocation of emancipation in the Civil (Continued on page 7)

"Serving Our District Well"

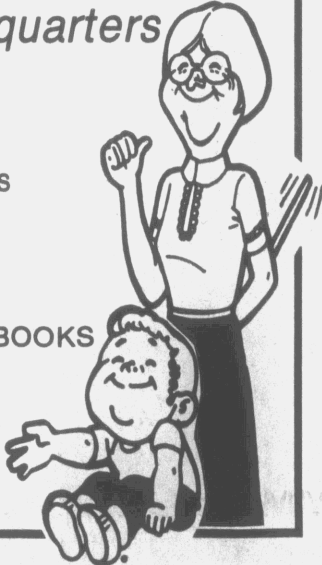
RE-ELECT  
SENATOR **TOM TAFT**  
**STATE SENATE**  
Democrat

Back to School Supplies Headquarters

- Notebooks
- Paper
- Pencils
- Ink Pens
- Book Bags
- Stationery
- Rulers
- Calculators

Swift Office Supplies

SCHOOL • STATIONERY • CARDS • BOOKS  
1000 WEST FIFTH STREET  
GREENVILLE, NC 27834  
TELEPHONE 830-0567



*The Pride & Joy  
of Eastern North Carolina  
Is Back!!*

**Joy 1340 AM  
WOOW**

*Your Community  
Station*

**Eastern North Carolina's  
ONLY Minority Voice!!**

**TUNE US IN!!**

**USED TIRES  
ALL SIZES**

Prices From \$8.00 to \$18.00 Each  
We Mount & Balance \$4.00 Each  
Buy 3 & Get 4th FREE  
GUARANTEED  
Come By and See . . .

For Your Next Tires

Washington St. — Behind Evans Seafood Market

*Dick Gregory's*  
SLIM-SAFE  
**BAHAMIAN  
DIET®**

Diet The Slim-Safe Way And Use  
A Proven Product

FOR MORE INFORMATION CALL 757-1037  
★ Business Opportunities Available ★



**Margaux's - Your FRESH  
Seafood Restaurant.**

WE HAVE THE ABSOLUTE FRESHEST SELECTIONS AVAILABLE  
CALL TODAY FOR OUR DAILY AND EVENING SPECIALS!!  
MONDAY, TUESDAY, AND WEDNESDAY NIGHTLY FEATURES FROM \$6.95 to \$8.95  
Mention this ad and have a smooth glass of M.J. Vallejo wine on US!!

✓ New & Exciting Menus ✓ Relaxing Family Atmosphere  
✓ New & Comfortable Decor

Just What You've Been Waiting for In Greenville  
COME SEE AND TASTE THE ELEGANCE

**Margaux's**  
Great Steaks and Seafood

Lunch: Monday-Friday 11:30-2:00  
Dinner: Monday-Thursday 5:30-9:30  
Friday & Saturday 5:30-10:00

Telephone  
752-7566  
706 South Evans Street

All ABC Permits



# What's Up?

## RUNOFF ELECTION

D. D. Garrett and James H. Dupree will square off again in a second Democratic runoff for Pitt County Commissioner.

Only voters in Consolidated District A will vote during the election. The district includes the Belvoir, Bethel and Carolina precincts, and Greenville precincts 1, 3, 4, 5, 6, 7 and 8.

The registration deadline for the new election is September 12.

Garrett initially defeated Dupree by two votes in the May 31 runoff, but Dupree filed complaints citing election irregularities in two precincts.

## SICKLE CELL MONTH

Greenville Mayor Edward E. Carter proclaimed September as "Sickle Cell Month" in the city and urged citizens to become more informed and involved in the education, treatment and care of people with sickle cell disease.

An inherited blood disorder, the Sickle Cell Disease strikes many blacks.

## GYMNASTICS CLUB

The Gymnastics Club for Children is having a phone-in registration. Some class times have changed because other classes have been filled. For more information call 752-9432 or 355-3232.

## VOTER REGISTRATION

The League of Women Voters of Greenville-Pitt County will sponsor a voter registration drive October 1 at Pitt Plaza. For more information, call Sue Wilson at 355-6861.



## OUTSTANDING STUDENT

Sonya Ruffin has been selected as an outstanding college student of America. This achievement is gained through academics and extra curricular activities. Sonya is being considered for one of the many scholarships given by this committee.

Sonya is the daughter of the very proud Jesse and Katherine Ruffin. She will return to North Carolina State University to continue her education.

The Pitt County Agricultural Extension Service will conduct wreath workshops September 13 and October 20 at the extension office.

Afternoon sessions are from 1:30 p.m. to 4 p.m. each day, and evening sessions are from 7 p.m. to

9 p.m. Judy Hubert of Pantego will conduct the classes and will provide all supplies.

A fee is required to register for the course. For more information, call the service at 830-6370. Deadline for registration is Tuesday.



## SUBSCRIBE

YOUR

**VOTE**  
IS NEEDED

**STUART SHINN**  
**PITT**  
COUNTY COMMISSIONER

Paid For By Stuart Shinn

## Pitt County Memorial Hospital

### ASSISTANT VICE PRESIDENT of FINANCE

Pitt County Memorial Hospital, a 550\* bed acute care teaching hospital is presently recruiting for an Assistant Vice President of Finance. Position requires a 4-year degree in Accounting or related with 3-5 years of financial experience in an administrative capacity. Preference will be given to CPAs, MBAs, and candidates with healthcare experience. Responsibilities include assisting in the planning and management of hospital fiscal affairs and annual budget of \$137 million. Excellent salary and benefits package. For consideration, send resume and salary history to:

Employment Office  
PITT COUNTY  
MEMORIAL HOSPITAL  
P.O. Box 6028  
Greenville, NC 27834  
800-346-4307  
919-551-4556

EOE/AA

Application deadline is September 30, 1988.

## ENCR-ABSW elected officers for 1988-1990

On June 5th, ENCR-ABSW elected officers for 1988-1990. The new officers are: Irv Moore, Jr. President; Barbara Brockett-Fenner, Vice President; Alma Gilmore, Secretary; Dorothy Robinson, Assistant Secretary; Addie Everett, Treasurer; Thelma Ellis, Parliamentarian; and Shelly

BLOOD DRIVE FOR SICKLE CELL. September is Sickle Cell Month. On Tuesday, September 6th, individuals can donate blood in the name of a person with sickle cell. The blood drive is from 12-6 p.m. at the Moose Lodge. For further information, contact Mildred Council.

## WNCT-TV 9

Roy H. Park Broadcasting, Inc.  
P.O. Box 898  
Greenville, N.C. 27835-0898

**THE CHALLENGE** airing the correct commercial at the right time on the right day.

**THE METHOD** maintaining the computerized in-house media inventory and facilities systems.

**THE JOB** Media Assistant.

**THE PLACE** Traffic Department at WNCT-TV.

Apply in person at WNCT-TV, 3221 Evans Street Extension, Greenville.

EOE

## The Shoe Outlet

201 West 9th Street  
(Next door to Evans Seafood)

**Stride Rite Shoes**  
**For Children**  
Reg. 22.50-46.00

Our Price **3 to 15.00**  
(Factory Returns)

*Shoes for the Entire Family*



## FOR SALE:

**Satellite Available**

*Repair • Installation*

*• Will Check It Out •*

CALL: Mon. - Fri. 9 a.m. - 5 p.m.

**757-0365**

**757-0425**

## BACK TO SCHOOL

- ✓ Student Lamps
- ✓ Globes
- ✓ Attache' Cases

**TAFF**

OFFICE EQUIPMENT CO., INC.  
Your Office & School Supply Store  
569 S. Evans Street, Greenville, N.C.  
752-2175

"Over 40 Years"

**Finally!!**



Beautiful Black Christmas Cards Are  
Now Available in Greenville &  
Pitt County

Order Today  
& Receive Them Today

Call Greg at:  
**758-7134**

Box of 15 ONLY \$8.50

Single Cards Available for \$1 Each

## Heilig-Meyers Annual Carpet Sale!!

**Last Day of Sale is September 30th**

**5 Attractive, Subtle Multi-Tones To Choose From**

**3M Scotchgard® Stain-Release® treatment, saxony style with continuous filament nylon.**

**Call Any of Our Friendly Sales Staff For A Free Estimate**



SALE IN EFFECT AT ALL AREA STORES!

**USE  
YOUR  
CREDIT**

518 E. Greenville Blvd.  
Greenville  
756-4145



# Faces & Places



## RED OAK CONVENIENT MART

1508 Greenville Blvd.

- ★ Cold Beverages ★
- ★ Breakfast Sandwiches ★
- ★ Cheese Burgers ★
- ★ Hot Dogs ★
- ★ Friendly Service ★

"Serving Our District Well"

RE-ELECT

SENATOR

**TOM TAFT**  
**STATE SENATE**

Democrat

## Mitchell's Beauty Salon

303 S. Mills Street  
Winterville, NC

Call Today  
Phone: 756-5904

Barbara R. Mitchell, Owner  
Valerie A. Burney  
Mary A. Garriss

"Your Beauty Is Our Business"



## MEAT SPECIAL

Sept. 1st Thru Sept. 30th

— ALL MEATS PREPARED UNDER N.C.D.A. INSPECTIONS —

1/2 Beef cut and wrap	1.35 lb.
Hind cut and wrap	1.55 lb.
Front cut and wrap	1.30 lb.
T-Bone Steak . . . . 10 lbs.	26.90
Sirloin Steak . . . . 10 lbs.	20.90
Rib Steak . . . . 10 lbs.	20.90
Round Steak . . . . 10 lbs.	17.90
Chuck Steak . . . . 10 lbs.	13.90
Rib-Eye Steak . . . . 10 lbs.	35.90
Rib Stew Beef . . . . 10 lbs.	11.90
Boneless Stew Beef . . . 10 lbs.	17.90
Ground Beef . . . . 10 lbs.	14.00
Red Potatoes . . . . 50 lbs.	9.00
Beef Patties (3 oz.) . . . 10 lbs.	13.00
Beef Ribs for Bar-B-Q . . 10 lbs.	15.90
Turkey Wings . . . . 10 lbs.	4.90
Jamestown All Meat Hotdogs . 10 lbs.	10.50
Cypress Bacon Gwaltney (6) 1 lb. pks	4.79

Call In Orders For FAST SERVICE!

All Meats Guaranteed

All Beef — Western

All Pork — Native

No Limit on Purchases

CALL IN YOUR ORDER

It Will Be Ready

Ham Hocks Smoked . . . 10 lbs.	11.90
Country Sausage Dry . . . 10 lbs.	19.90
Links, Sausage . . . 10 lbs.	13.50
Bulk, Sausage . . . 10 lbs.	12.80
Pork Neck Bones . . . 10 lbs.	4.90
Pork Tails (Corned) . . . .	.89 lb.
Country Side Pepper Coated . . . .	1.09
Pork Front Feet . . . 10 lbs.	4.90
Pork Chittling, Raw . . . 10 lbs.	5.50
Pork Chittling, Cooked . . . 10 lbs.	10.40
Pork Brisket Ribs . . . 10 lbs.	5.50
John Morrell Bacon . . . (6) 1 lb. packs	4.99
Pork Chop, frozen . . . 10 lbs.	16.90
Pork Salt Side (Small) . . . .	1.09 lb.
Slab Bacon Slice . . . 10 lbs.	11.90
Slab Bacon Whole . . . .	1.04 lb.
Pork Spareribs . . . Frozen . . 30 lbs.	29.70
Fresh Pork Shoulder . . . .	1.09 lb.
Lard, 25 lb. Pail (Smithfield) . . . .	10.95
Pork Chops Center Cut Frozen . 10 lbs.	19.90
Country Ham Hocks . . . 10 lbs.	11.90
Corn Bread Sticks (12 doz.) . . . .	8.00
Pork Spare Riblet . . . 10 lbs.	10.90
Jimmie Hickory Smoke . . . 10 lbs.	13.60
Jimmie Brown Links . . . 10 lbs.	13.80
Pork Smoked Shoulder . . . .	1.29 lb.
Pork Spareribs . . . 10 lbs.	10.90

## YOU'LL SAVE MORE DURING OUR BIG PORK SALE

Turkey Neck . . . . 10 lbs.	4.90
Pork Chop, end cut . . . 10 lbs.	13.90
Pork Neck Bone, Whole . . . 30 lbs.	10.90
Pork Brisket Bones . . . 10 lbs.	5.50
Pig Front Feet . . . . 30 lbs.	10.50
Bologna, Stick-All Meat . . . .	1.19 lb.
Smoked Ham Bone . . . 10 lbs.	8.90
Fresh Pork Shoulder . . . .	1.09 lb.
Fresh Pork Back Bone . . . .	1.29 lb.
Fresh Pork Hams . . . .	1.09 lb.
Fillet Trout . . . .	1.49 lb.
Pork Spare Rib (Corned) . . . .	1.19 lb.

A PACK	B PACK
10 lb. T. Bone Stk.	10 lb. Sirloin Stk.
10 lb. Ground Beef	10 lb. Grd. BF. Pattys
10 lb. Chicken Whole	10 lb. Smoked Sausage
10 lb. Pork Chops	10 lb. Fryers
40 lb. for \$59.95	40 lb. for \$49.95
C PACK	D PACK
10 lb. Rib Stk.	10 lb. Chitlins
10 lb. Hot Dogs	10 lb. Pork Spare Ribs
10 lb. Chicken Leg 1/4	10 lb. Chicken Wings
10 lb. BBQ Beef Ribs	10 lb. Pork Sausage
40 lb. for \$45.95	40 lb. for \$35.95

Open

MONDAY THRU SATURDAY

8:00 A.M. — 6:00 P.M.

## Pollard Trading Post

100 Pollard Street

Behind Fred Webb's Grain Mill  
Greenville, North Carolina

PHONE 758-2277

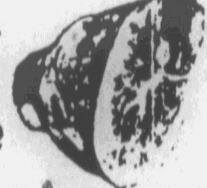
Owner and Operator

George Whitley

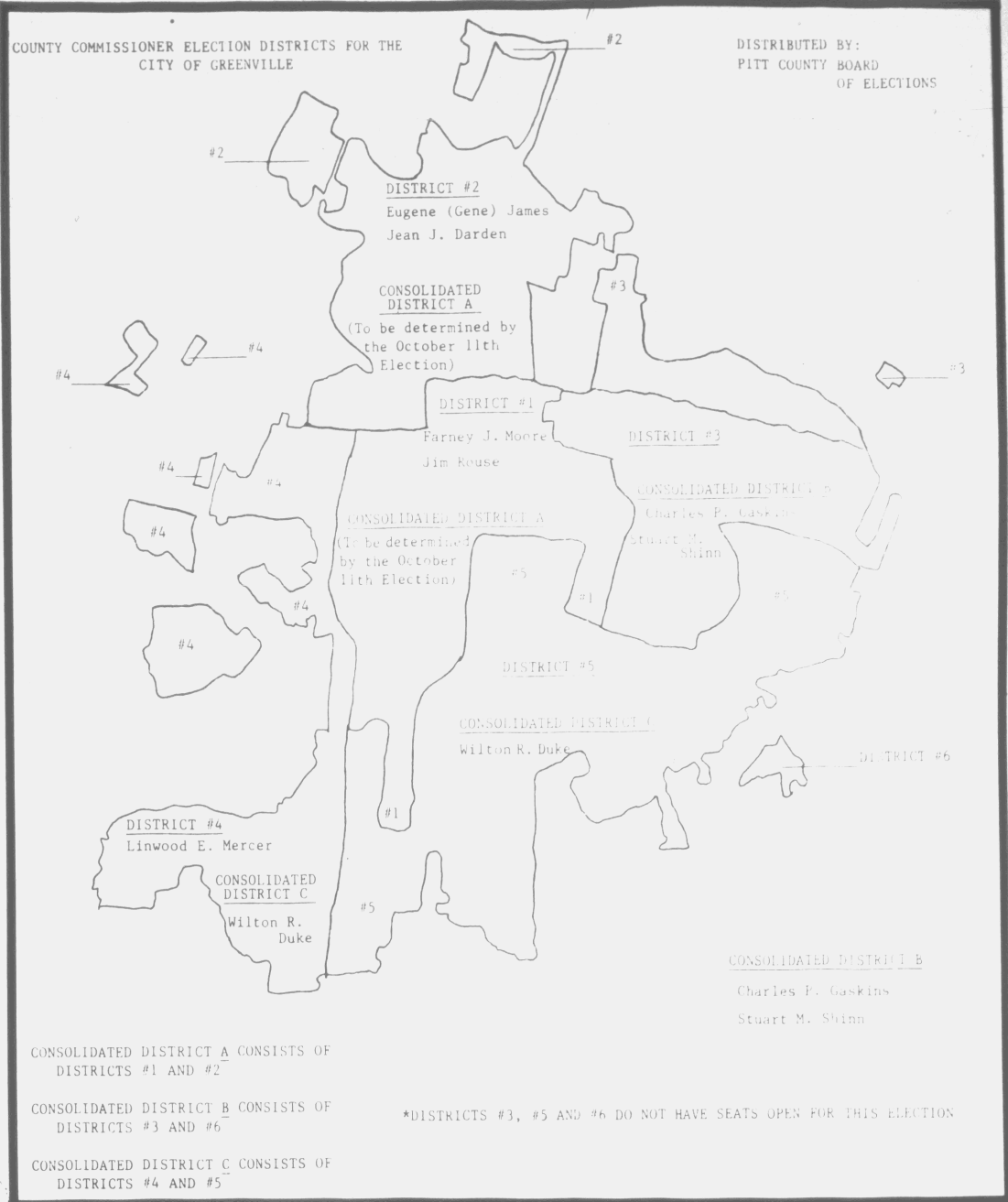
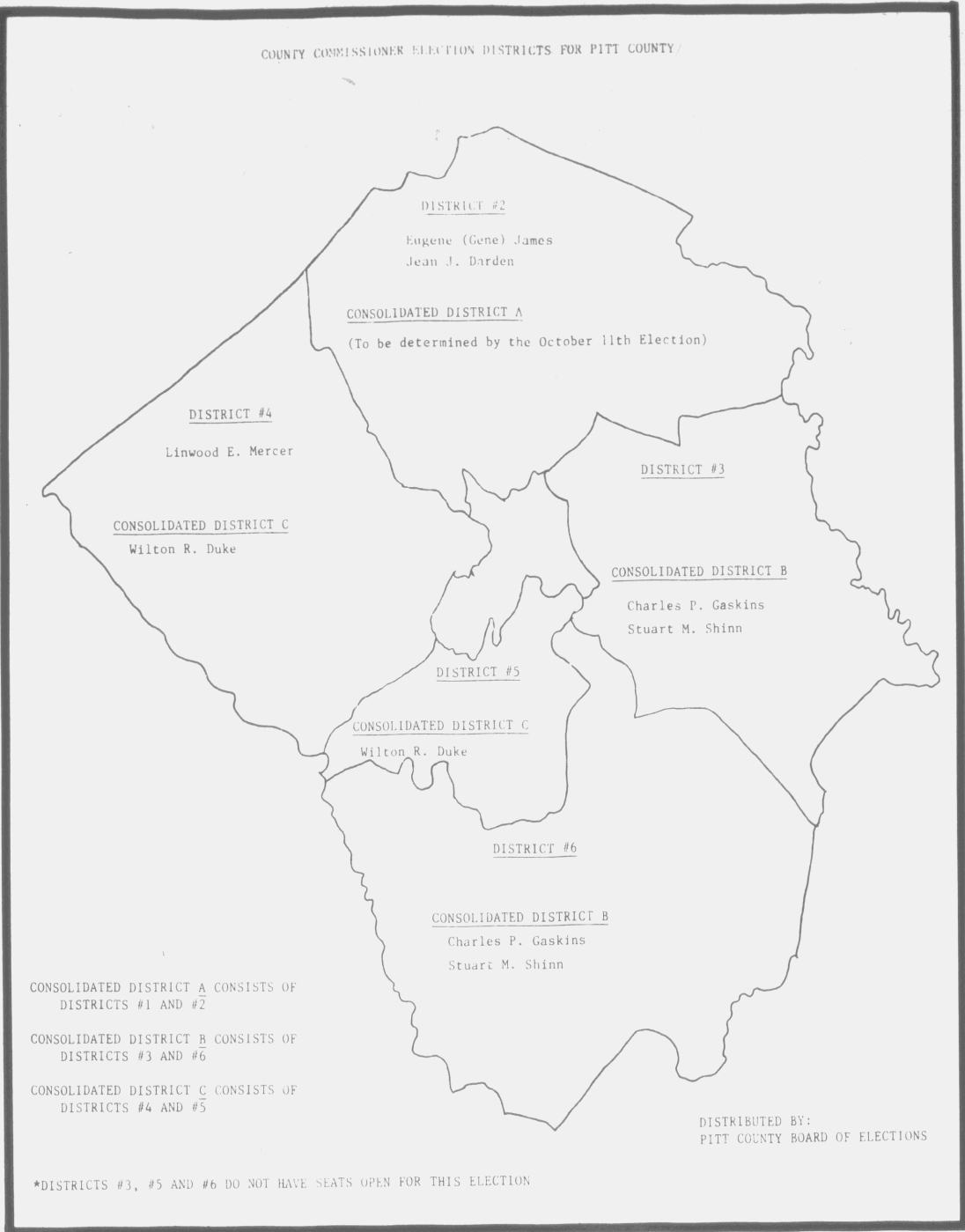


MEAT MAKES THE MEAL!

FOOD STAMPS ACCEPTED







Support the Advertisers of  
The "M" Voice

## Pardon Our Mess

While our main building is being renovated, our first floor and drive-thru window are closed and our parking lot is filled with construction vehicles and supplies. Do yourself a favor -- instead of coming to the office to pay your utility bill, just mail it, use our convenient automatic Bank Draft program or pay it at one of the following local banks:

- \* Barclays of N.C.
- \* Branch Banking & Trust Co.
- \* ECU Student Bank
- \* First Citizens Bank & Trust Co.
- \* First Federal Saving & Loan
- \* Peoples Bank & Trust Co.
- \* Planters National Bank & Trust Co.
- \* Wachovia Bank & Trust

If you have any questions, please call Greenville Utilities at 752-7166.

*We're Remodeling to Serve You Better!*

Greenville



Utilities

### NOTICE OF NEW SECOND DEMOCRATIC PRIMARY FOR DISTRICT A COUNTY COMMISSIONER TO BE HELD IN PITT COUNTY COMMISSIONER DISTRICT A ON OCTOBER 11, 1988

Pursuant to Order of the State Board of Elections dated August 26, 1988, there will be a new Second Democratic Primary for District A County Commissioner conducted within said District in the County of Pitt, North Carolina, on October 11, 1988, for the purpose of nomination of County Commissioner for District A, which is a combination of Districts 1 and 2.

Only DEMOCRATIC VOTERS RESIDING IN CONSOLIDATED DISTRICT A WILL BE ELIGIBLE TO VOTE IN THE SAID NEW SECOND DEMOCRATIC PRIMARY FOR NOMINATION OF DISTRICT A COUNTY COMMISSIONER.

Said new Second Democratic Primary will be conducted on October 11, 1988, and the voting places in District A will be open between the hours of 6:30 a.m. and 7:30 p.m. The precinct voting places within District A are as follows:

BELVOIR  
BETHEL  
CAROLINA  
GREENVILLE NO. 1  
GREENVILLE NO. 3  
GREENVILLE NO. 4  
GREENVILLE NO. 5  
GREENVILLE NO. 6  
GREENVILLE NO. 7  
GREENVILLE NO. 8

The registration deadline for said new election will be September 12, 1988. Qualified Democratic voters within District A who have registered on or before September 12, 1988 shall be entitled to vote in the new election.

Voters who register after the registration books close for said new election will not be eligible to vote on October 11, 1988, but will be eligible to vote in the November election, and thereafter. Registration is continuous.

Absentee ballots for said new Second Democratic Primary for District A County Commissioner in Pitt County will be available as soon as practicable.

Voters should check registration cards to determine the County Commissioner District in which they reside. Questions concerning registration and district assignment should be directed immediately to the Elections Office located at 201 East Second Street, Greenville, N.C. The telephone number is 830-4121. This will avoid inconvenience and delay on election day for voters and poll workers.

Voter registration books will be open to public inspection by any registered voter of Pitt County between the hours of 9:00 a.m. and 5:00 p.m. Monday through Friday at the elections office, 201 East Second Street, Greenville, N.C., and such shall be Challenge Days.

The Registrars, Judges and other Election Officials appointed by the Pitt County Board of Elections will serve as Election Officials for said new Second Democratic Primary for Pitt County Commissioner District A in the ten (10) voting places in District A set out above.

This the 31st day of August, 1988.

NELSON B. CRISP, CHAIRMAN, PITT COUNTY BOARD OF ELECTIONS

## Builder's BARGAIN CENTER

1700 Dickinson Ave. • Greenville • 758-7061

Shingles (#2) \$9.95 sq. and up; Paper rapped colors  
\$12.95; Black \$13.95

Reject Plywood - 5/8" \$6.25; 3/4" \$6.95  
Hardboard Siding (#2) 8" x 16' - \$2.89; 12" x 16' -  
\$4.69; 4' x 8' - \$9.63

15 LB. Felt \$4.95; 90 LB. Roll Roofing \$7.95  
5V Tin - 8' \$5.49; 10' \$6.85; 12' \$7.30

Greenville

758-7061

"We Buy when you need it  
Therefore we can give  
you a Better Deal"

**Gorham's  
Auto  
Sale**

Donald and Carolyn  
Gorham

3110 S. Memorial Dr.  
Greenville, NC 27834

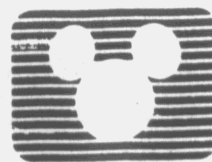
Res. 919-355-2706  
Bus. 919-756-2706

### Hannah's Convenient Mart



5th & 14th Streets  
Greenville

When you run out . . . run  
in for your cold sodas,  
bread & cold beer, wine, etc.  
Manager, Lindburgh C. Joyner



The Disney Channel  
SEPTEMBER

A trio of Krypton villains threaten  
havoc on Earth.



Christopher Reeve,  
Gene Hackman and  
Margot Kidder in  
**SUPERMAN II**



Greenville Cable TV

Call 756-5677 Today!

EXCLUSIVE!

World television premiere of the  
Disney hit film!



**BENJI  
THE HUNTED**

An unusual story of love and courage as  
Benji, lost in the woods,  
confronts his mortal enemies.

FREE  
INSTALLATION  
Thru  
September 30th



SUPPORT THE ADVERTISERS  
OF THE 'M' VOICE

"Serving Our District Well"

RE-ELECT

SENATOR **TOM TAFT**  
**STATE SENATE**  
*Democrat*

Pitt County  
Memorial Hospital

INTERNAL AUDITOR

Pitt County Memorial Hospital, a 550+ bed acute care teaching hospital is presently recruiting for a newly created position of Internal Auditor. This highly responsible position reports directly to the Senior Vice President/COO. Responsibilities will include examining the controls, records, financial statements and other reports; measuring the compliance of policies, plans and procedures to verify adherence to accounting principles; and assisting in safeguarding assets and recommends efficiency and productivity standards.

The candidate selected for this challenging position will possess a 4 year degree in Accounting or Business Administration. Previous experience must come from a minimum of 3 years actual audit work (internal or external) with other experience in financial accounting. A CPA with Big 8 accounting experience and/or hospital experience desirable.

PCMH provides a starting salary commensurate with experience and outstanding benefits. For consideration, please send resume and salary history to: Employment Office, PITT COUNTY MEMORIAL HOSPITAL, P.O. Box 6028, Greenville, NC 27834, 1-800-346-4307 or 919-551-4556.

Application deadline is September 30, 1988.

EOE/AA

CAREER OPPORTUNITIES

Performs responsible professional duties in the development, production, and implementation of internal and external communications of the City organization. Administers public information program to include annual reports, press releases, news articles, pamphlets, employee newsletter, cable programming, speakers bureau, and related activities.

Must have excellent written and oral communication skills and good working knowledge of the municipal operations and procedures.

B.S. degree in journalism, communications, public relations, or related field and 2-3 years responsible experience.

Salary range: \$19,364.80 - \$24,190.40.

Apply by 5:00 p.m., Friday, September 16, 1988, to the City of Greenville, Personnel Department, 201 W. 5th Street, P.O. Box 7207, Greenville, NC 27835-7207.

EOE/AA M/F/H

The DOPEBUSTERS

The DOPEBUSTERS emerged out of the long tradition of community service of the NATION OF ISLAM in the capital city of our nation. Washington, D.C. in response to pleas from citizens besieged by drug dealers in the Mayfair Mansions housing development. Through a unique combination of Love, Faith and Disciplined action, the criminal Dopebusters were successful in eliminating drugs from Mayfair Mansions. Now is time for the Dopebusters program to be introduced to the entire nation.

Thus, the 1st Annual Dopebusters Walk-A-Thon is designed to raise necessary funds to establish a National Dopebusters Campaign Against Drugs. If you would like to know how you can help—read further

WALK-A-THON OVERVIEW

On Saturday, September 24th, The DOPEBUSTERS will have its Annual National Dopebusters Walk-A-Thon. The Walk will take place in over 10 cities across the nation. Thousands of people will participate in this Walk Against Drugs.

Each city will target at least 1,000 walkers to participate.

Thousands of Brochures, Sponsor sheets, and Posters will be distributed to advertise this event and enlist walkers.

As a sponsor, your name will become a household name and a symbol against drugs in your community.

We, the Dopebusters, would like you to be on the Team in this premier event. Included is a mutual benefit package which outlines the benefits to your organization as well as to the Dopebusters. The greatest benefit will be to the community, who will be comforted in knowing that we have join our forces together to fight drugs!

The first step is to formulate a Team. Let's get together and discuss the possibilities.

We want our youth back! We need to re-train and reeducate them. We need to provide them with an alternative to drugs!!!

\*present to sponsor, along with mutual benefit package.

Benefit To Sponsor

1. Advertising - sponsors get their name put on over 10,000 pieces of Walk-A-Thon information, i.e. Sponsor sheets, T-shirts, Brochures and Posters that will be mailed to people all over the city.

2. Goodwill - the Sponsors gets the opportunity to be associated with an event who's goal is to knock out the problems of drugs in the community. People will begin to associate the sponsor with helping the community.

3. Community Responsibility - radio, T.V. station and some businesses have community affairs departments, where they set aside

monies to promote their business through community service with T.V. and radio stations they are mandated to do community service projects.

4. Honorary Chairperson - there is only one Honorary Chairperson: It is the representative of the radio station or business who provides the most publicity and monies to offset the cost of the Walk-A-Thon. This position is honorary because this person does not actually work on the project. The Honorary Chairperson should begin the Walk and attend the collection party. This looks good for the Chairperson as well as the Station.

1. Receive free advertising (radio, T.V.) necessary to ensure publicity of the event. Public Service Announcements (PSA) are to be sent to all radio, T.V. and news media some will advertise the event even if they do not sponsor it.

2. Local Mosque gets the opportunity to push the program of the Nation of Islam. People will be calling in and dropping by to pick up sponsor sheets.

3. Sponsors pay for printing of T-shirts, prizes and refreshments for Walkers.

4. Sponsor provides Honorary Chairperson (best if radio or other popular personality) to continually advertise the Walk-A-Thon.

5. Participate in Talk Shows pushing the program of the Nation of Islam.

For Walk-A-Thon on Sept. 24, 1988 Target: 500 Walkers

1. Stationary (based on 1000)  
a. Sponsor Sheets ..... 60.00  
b. Flyers ..... 60.00  
c. Posters  
d. Check Point Cards ..... 60.00  
e. Registration Cards ..... 50.00  
f. Walk Numbers  
g. Envelopes ..... 52.00  
h. Route Map ..... 50.00  
TOTAL ..... 332.00

Note: Route numbers can be made and Posters have been negotiated when designed.

2. Equipment  
a. Telephone ..... 49.95  
b. Answering Machine ..... 99.00  
c. Installation of NEW line ..... 67.00  
d. Post Office Box ..... 39.00  
TOTAL ..... 254.95

3. Logistics

a. City and Park Permit Application ..... 25.00  
b. Rescue Squad (All you need is an EMT available)  
c. Port-A-John .. 58.00 per day  
d. Beverages/Food  
e. T-Shirts ..... 5.75 ea.

4. Prizes  
a. Video Tape Machine ..... 350.00  
b. Cassette Players ..... 150.00  
c. Others (to be determined)  
TOTAL ..... 500.00

5. No Cost Considerations

a. Determine Route (will start at Thomas Foreman Park)  
b. Collection Party, Date & Address

c. PS Announcements to local Media (free on Radio, TV, Newspaper)

d. Security (at least 15)

e. Volunteers (at least 20)

f. EMT = Emergency Medical Technician (must be licensed)

WALK-A-THON - A Walk-A-Thon is a fundraiser where Walkers (participants) raise monies by obtaining pledge for each mile they walk.

SPONSOR - Three types of Sponsor(s)

National Sponsor - Underwrites the cost of the event at the National level so that each city has similar printing, T-shirts, or prizes (i.e. Clean N Fresh, Soft Sheen, Johnson Products)

Local Sponsor - Underwrites costs of event in one city.

Could provide cost for advertising, printing, prize package, T-shirts.

Also provides Honorary Chairperson.

Individual Sponsor - A person or business that gives the individual walker a certain amount of money for each mile they walk.

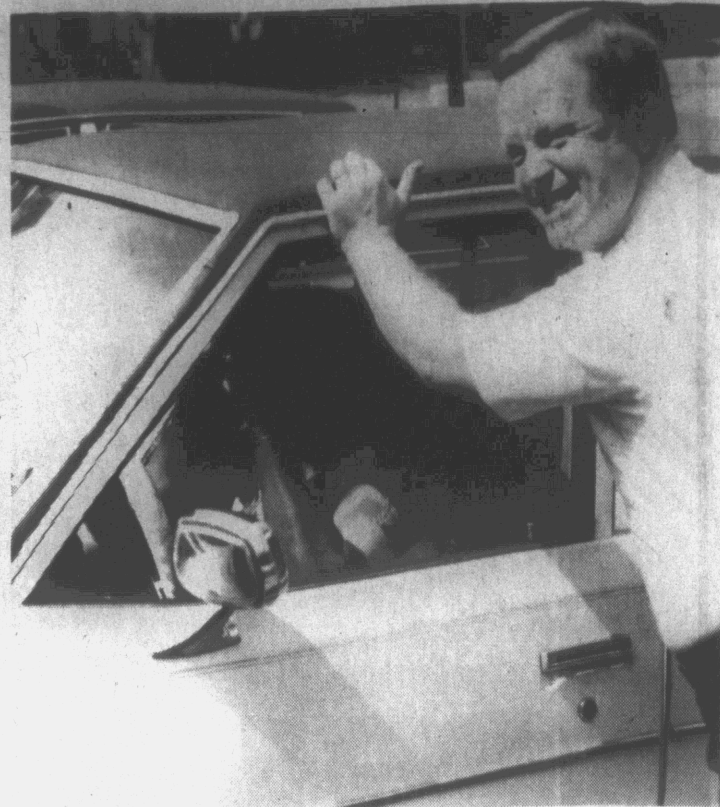
Sponsor Sheet - List of individual sponsors for each Walker.

SAMPLE See Attached Copy TIPS FOR THE SPONSOR SHEET

1) Be sure to have the Sponsor print his Name, Address (including zip code) and telephone number on Sponsor Sheet. This can be used for a later mailing list.

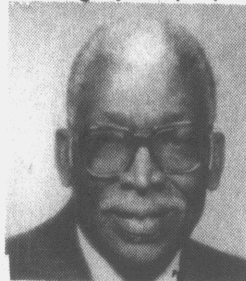
2) Be sure "Total Pledged" column is filled in so that the sponsor will know how much money he is committed to pay you.

3) Since you know you are going to "Walk" the Ten (10) miles, encourage the sponsors to pay their pledge in advance. It will be much easier to collect most of your



APPRECIATION . . . Charles Overton, owner of Overton Supermarket is shown greeting some of his customers. Overton Supermarket is independently owned by the Overton family, who were born and reared in Greenville and support local farmers with fresh vegetables as well as Charles Overton is a proud sponsor of the Black Community's new radio station WOOW. Look for the free shopping spree coming at you real soon.

Call us if you need someone to collect your rent and manage your property.



TO BUY, RENT, OR SELL  
REAL ESTATE, CONTACT



**D.D. GARRETT**  
**AGENCY**

606 Albemarle Ave.  
Since 1946

757-1162

757-1692

★ ATTENTION ★  
**WOOW**  
Grand Opening

*Cermonies Will Take Place  
At Evans Street Mall*

**Coming Soon**  
**African Festival on the Mall**

☆ *African Dancing* ☆ *Games* ☆  
☆ *Booths* ☆ *Live Music* ☆  
☆ *Gospel Singing* ☆

**Black Businesses on Display**  
**Free Soda - Hot Dogs**

**Live Broadcast Speakers**  
**From Peoples Bank**

**Vice President, Denton Hardee**  
**Famer's Home Administration**  
**Bill Dansey, Mayor Ed Carter**  
**Jim Rouse, Owner of WOOW**  
**& The 'M' Voice Newspaper**  
**& Many Others**

★ **Carolina Grill** ★  
**Restaurant**

"DOWN HOME COOKING"



CAROLINA  
SPECIAL  
Every Day  
Special  
Barbecue  
Neckbones  
Fish

Only **\$2.60**  
**Breakfast**  
**99¢**

**OWNERS MELVIN & SANDRA MCLAWHORN**  
**OPEN 6 AM**  
**Cold Beer**

**\$2.60 Lunch — Choice of Meat & 2 Veggies.**  
907 Dickinson Ave. Greenville 752-1188

**PERFORMING**  
**ARTS**

The Performing Arts Series

**The Ohio Ballet**  
Wednesday, October 12, 1988

**Wynton Marsalis**  
Tuesday, November 1, 1988

**The Atlanta Symphony**  
Thursday, November 17, 1988

**NY Gilbert & Sullivan Players**  
in

**Pirates of Penzance**  
Monday, January 30, 1989

**The Polish National**  
**Radio Orchestra**  
Wednesday, February 22, 1989

**The E.C.U. and**  
**North Carolina Symphonies**  
**with Karen Shaw**  
Sunday, March 19, 1989

**Cabaret**  
Monday, March 20, 1989

**The Acting Company in**  
**Love's Labour's Lost**  
Monday, April 10, 1989

**Nadja Salerno-Sonnenberg**  
Thursday, April 20, 1989

The Chamber Music Series

**Buswell - Parnas - Luvial Trio**  
Monday, October 3, 1988  
**National Gallery of Art Vocal Ensemble**  
Monday, November 14, 1988



**Tokyo String Quartet**  
Thursday, March 16, 1989  
**Oregon**  
Wednesday, April 5, 1989

**EAST CAROLINA UNIVERSITY**

Phone Order:  
(919) 757-8811, ext. 288  
11:00 a.m.-6:00 p.m.  
Monday-Friday

Mail to: Central Ticket Office  
Mendenhall Student Center

East Carolina University  
Greenville, N.C. 27858-4353

NAME \_\_\_\_\_ DATE \_\_\_\_\_  
ADDRESS \_\_\_\_\_  
CITY \_\_\_\_\_ STATE \_\_\_\_\_ ZIP CODE \_\_\_\_\_  
DAY TELEPHONE \_\_\_\_\_ EVENING TELEPHONE \_\_\_\_\_  
PLEASE MAKE CHECK PAYABLE TO CENTRAL TICKET OFFICE  
VISA \_\_\_\_\_ MASTERCARD \_\_\_\_\_ ACCOUNT NUMBER \_\_\_\_\_  
EXPIRATION DATE \_\_\_\_\_ AUTHORIZING SIGNATURE \_\_\_\_\_  
Reserve My Seat in Wright Auditorium Section \_\_\_\_\_  
Hendrix Theatre Section \_\_\_\_\_

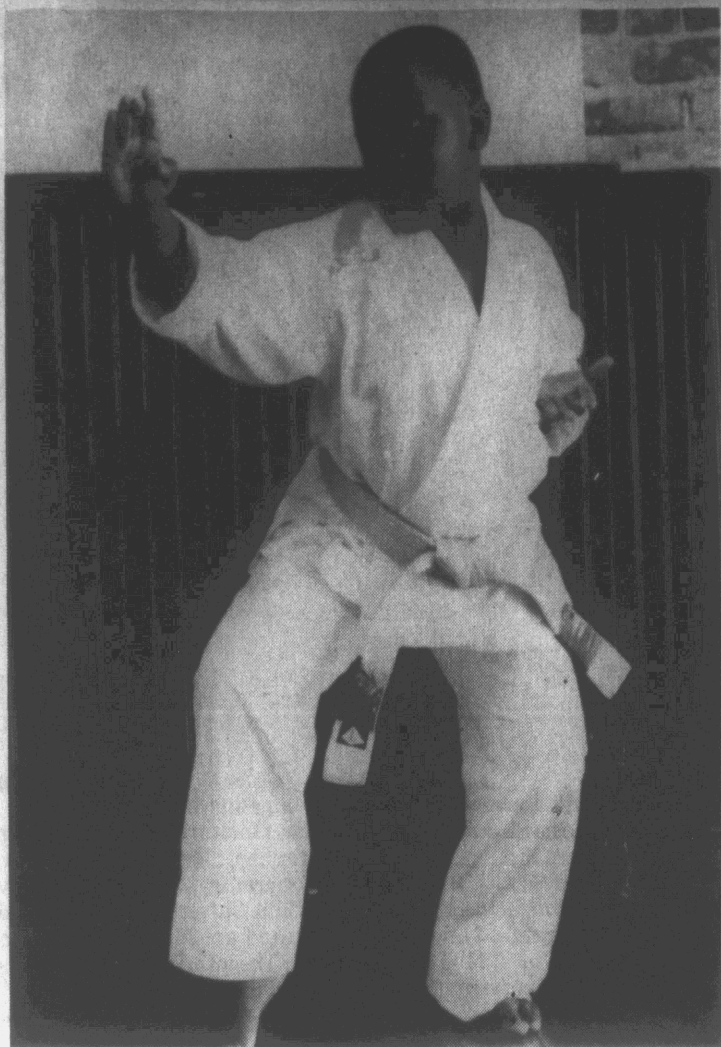
Subscribers may purchase THE PERFORMING ARTS SERIES in one of two ways. They may purchase all ten events, or they may choose seven of the events as part of our SELECT YOUR OWN PERFORMING ARTS SERIES. THE CHAMBER MUSIC SERIES may be purchased only as a group.

PERFORMING ARTS SERIES (ALL TEN EVENTS)	Quantity	Cost	Total Cost
Patio	1	\$10	
Faculty Staff	1	\$10	
ECU Student Youth	1	\$10	
SELECT YOUR OWN PERFORMING ARTS SERIES	Quantity	Cost	Total Cost
Patio	1	\$10	
Faculty Staff	1	\$10	
ECU Student Youth	1	\$10	
Check the Seven Events of your Choice			
One Ballerina Magazine	<input type="checkbox"/>		
Faculty Magazine	<input type="checkbox"/>		
Faculty Sympathy	<input type="checkbox"/>		
Faculty Sympathy	<input type="checkbox"/>		
Faculty Sympathy	<input type="checkbox"/>		
Faculty Sympathy	<input type="checkbox"/>		
Faculty Sympathy	<input type="checkbox"/>		
Faculty Sympathy	<input type="checkbox"/>		
CHAMBER MUSIC SERIES (FOUR EVENTS)	Quantity	Cost	Total Cost
Patio	1	\$10	
Faculty Staff	1	\$10	
ECU Student Youth	1	\$10	
Subtotal			
Handling Fee			\$0
Amount Enclosed			

(Continued on page 8)



# PITT COUNTY SCHOOL NEWS



ANTWOINE BRITT

Second grader Antwoine Britt, 7, is certainly a model student. The son of Mr. James Jr. and Mrs. Aletha Mae Nobles Britt, of the Midgette-Anderson Field on Stantonsburg Road near Farmville is on his way to becoming a full fledge Green Belt Martial Arts Expert.

Of the seven stages in Karate, Antwoine is at stage four shortly after a year of practicing. In his home and at the Bill McDonald Karate Studio on Dickinson Avenue, there are numerous trophies of all sizes that show where he has won in competitions. But wait, there's more!!

When Antwoine is not sparring with an opponent, he's on the Principal's List at Bruce Falkland Elementary School; or maybe he is studying his favorite subjects, math and science or maybe he's trying to accomplish his goal of becoming a profes-

sional football player. Then if he's not doing any of the above, you could probably find him at his piano lessons or in his bedroom listening to his favorite singer, L.L. Cool Jay or some other rap songs.

After talking with his father, Bro. James Britt, Jr., you kinda' get the feeling that he is proud of his son. Bro. Britt says he is careful not to put too much pressure on Antwoine, but notes that it is Antwoine who is very bright and is not afraid to venture out and try new things. He says is he fails at something he tries, he'll just keep trying until he succeeds.

Sherrie and Blackie, Antwoine's two Dobberman Pinchers are also proud of him and so are we at the Minority Voice. Keep up the good work, Antwoine. (And Mr. and Mrs. Britt.)

## Honor Society (Continued from page 2)

War period. Ebony magazine has saluted Robinson for her study of the three wives of Booker T. Washington. In New Haven, Connecticut, Robinson is known as a regular and popular contributor to the 'As I See It' column of The New Haven Register.

Robinson was, three decades ago, one of the first black women in American clinical psychology. In 1954, she received here undergraduate degree in psychology from North Carolina Central University in Durham, NC and in 1957, her masters in clinical psychology from Wayne State University in Detroit. She then interned in August, Maine, and was subsequently certified by the sttes of Maine and Indiana, where she practiced.

Robinson entered the field of community college education in the 1970s and in 1975, earned a doctorate from Nova University

in Fort Lauderdale, Florida, which specialized in encouraging work in this field. Her dissertation studied the effects of community service by students as a factor in their perception of alienation, academic roles, and course satisfaction.

In New Haven, Robinson is active in Newhallville community work and chairs the board of deaconesses of Immanuel Baptist Church. She participates in many national and international groups, including Alpha Kappa Alpha, a benefactive sorority.

Robinson is the mother of two university students and the wife of Charels E. Robinson, a Yale professor.

Robinson is the daughter of George F. and Mamie Garrett of 1300 Ward Street in Greenville, North Carolina. Robinson carries on a family tradition of teaching, journalism, and community service.

## OBITUARY

### WILKERSON

On Tuesday, August 9, 1988, in Newark, New Jersey, God called home Mrs. Sallie Ann Wilkerson Black to rest. She was born to Steven and Caroline Satterwhite Wilkerson on July 7, 1888 in Granville County.

She joined the New Hope Granville Baptist Church at an early age. Later she was united in holy matrimony to the late Andrew Black.

She later became a member of the Church of God in Christ Jesus where she remained faithful as long as her health allowed.

She leaves to mourn four sons, Cecro Black of Oxford, NC; James Black and Peter Black of Newark, NJ; and John Black of Roxboro, NC; four daughters, Bertha Thorpe of Oxford, Essie Thorpe and Mary Barnett of Orange, NJ and Rosa Ella Featherstone of Newark, NJ. Sixty-three grandchildren, ninety-one great-children, thirty-one great great-grandchildren. One brother, Elijah Wilkerson of Oxford; two sisters, Mrs. Ida Clayton of Akron, Ohio and Mrs. Sara Webb of Timberlake, NC. Four sons-in-law, Calvin Thorpe and Elmore Thorpe, both of Oxford, Willie J. Featherstone of Newark, NJ and Samuel Barnett of Orange, NJ; four daughters-in-law, Lizzy B. Black of Oxford, Gladys Black and Mary Marcellar Black of Roxboro and Mary Black of Orange, NJ; and a number of nieces, nephews, other relatives and friends.

ATTEND  
CHURCH  
SUNDAY!

Your Real Choice Is On November 8th

## BILL DANSEY

### STATE SENATE

A Strong Foundation  
For The Future

Paid for by The Dansey For Senate Campaign

"Serving Our District Well"

RE-ELECT

SENATOR **TOM TAFT**  
STATE SENATE

Democrat

COMING IN SEPTEMBER

ON  Greenville Cable TV,


cinemax  
**VANTAGE**  
Performances

LEGENDARY PERFORMERS IN NEVER-BEFORE-SEEN FOOTAGE  
**OTIS REDDING**

Don't miss the premiere of a unique new music series. Cinemax Vantage Performances featuring music legends in never before seen performance footage. This month we see the one and only Otis Redding at the height of his career at the Monterey Pop Festival. Also, a 1960s Memphis sound that made Redding classics such as "Shake Your Tail Feather" and "Loving You." MAX Sept. 17 20 22 25 26 28

UPCOMING SHOWS  
JOHN LENNON  
JIMI HENDRIX  
JIM MORRISON

Call 756-5677 Today!

## Westend Laundrymat

1414 W. 14th Street

★ Attendant On Duty ★

★ Weekend Specials ★

EVERY CUSTOMER'S FIRST DRY IS FREE!!

Heavy  
Duty  
WashersExtra Large  
Hot  
Dryers

Clean Facilities

## Hair Unlimited

"For the Look . . .

that gets the Looks"

August  
Special:  
FREE  
Hot Oil  
Treatment  
or Hair  
Trim With  
Relaxer!105 N. Lee Street  
Ayden, NC 28513  
(919) 746-2286HOURS  
Until 5 PM Evenings  
All Day SaturdaySpecial for the  
Summer Fashions . . .  
Hair Weaving • Curls  
Relaxers  
Introducing the Body WaveA Full Service Unisex  
Beauty Salon  
**MAGGIE KNIGHT**  
Owner/Stylist

## Don't Let The Smooth Taste Fool You!!

NEW PREMIUM  
MALT LIQUOR  
Available In Our Area  
Now . . . From  
**ANHEUSER-BUSCH**  
Inc.



# HARRIS

## SUPERMARKETS

### BELLS-FORK-SQUARE

### DISCOUNT

ON EVERYTHING BUT QUALITY

"WHERE SHOPPING IS A PLEASURE"

We Reserve The Right To Limit Quantities  
We Accept Food Stamps and WIC Vouchers

PRICES GOOD THRU SATURDAY!

## PORK PROCESSING CENTER

1/5th SLICES GENUINE OLD FASHION

COUNTRY HAMS ... \$2<sup>99</sup>

FRESH LINK

SAUSAGE ... \$1<sup>89</sup>

BONELESS SMOKED

PORK CHOPS ... \$2<sup>99</sup>

AIR DRY

SAUSAGE ... \$1<sup>99</sup>

GENUINE HICKORY SMOKED

SAUSAGE ... \$1<sup>99</sup>

FRESH

SOUSE OR C-LOAF ... \$1<sup>39</sup>

PURE COOKED CHITTERLINGS AVAILABLE

HAVING A PIG PICKIN'?

Whole BBQ pigs available (Call in advance to place orders). We have all your BBQ needs, charcoal, vinegar, red pepper, salt, sugar, cups, plates, forks, napkins, etc. in economy sizes. Plus, our deli can supply you with cole slaw and potato salad.

AVAILABLE IN ALL HARRIS SUPERMARKET LOCATIONS





**TOUCH DOWN!!** . . . ECU Football starting Quarterback, Travis Hunter (#5) decides to take time to show off some fancy footwork as he boosts the Pirates scoring edge over Tennessee Tech. The Pirates travel to South Carolina Saturday to take on the Gamecocks of USC. Hunter, a junior from Florida, is anticipating a thrilling repeat performance.



**COSMETOLOGISHT CHAPTER NO. 24** . . . will convene their monthly meeting beginning Monday, September 12th, at the home of Mrs. Ann Barnes at 2 p.m. They are looking forward to doing greater things this year. Pictured front row, left to right, are Mrs. Annie L. Cohen, president; Mrs. Fannie Jenkins, vice-president; Maudie Williams, secretary; and Shirley Bennisson, asst. secretary. Second row, Lucy Barnhill, chaplin; Ann Barnes; Brenda Weathington, advisor; Ann Early; Lillie Shiver, treasurer. Third row, Mary Corey, Shirley Latham and Clara Barnhill. Members not pictured are Marie Neal, Helen Bridges, Delois Williams, Mary Farmer, Delois Jones, Magalena Stevens, Theresa Ward. The club is still accepting new members. Meetings are held every first Monday from September to June.

**DOPEBUSTERS** (Continued from page 6)

money in advance than a after the Walk.

4) Get as many sponsors as you can, xerox more sponsor forms if necessary.

5) Minimum sponsorship is \$1.00 per mile (anything less can be taken as a donation and put in the "public appeal can project").

6) Note that on your sponsor sheet, in case of rain, one mile counts for five miles.

The Walker would only have to walk two miles in bad weather and still collect monies for the original mileage.

7) For persons under 18 years, parent must give permission to

walk. Do not let children walk without an adult.

Call 757-0425  
For Your  
Advertising  
Needs!!

2 GREENVILLE LOCATIONS

- 601 Dickinson Ave.
- 2808 E. Tenth St.

Greenville, N.C.

NEW

Whites

For Credit Charges At

JOHN Q. PUBLIC

WE HONOR

MasterCard VISA

'YOUR GROWING FAMILY DEPT. STORE'

You Are Invited..

TO OUR...  
CUSTOMER APPRECIATION DAYS

SEPT. 15TH THRU 17TH

AS A SPECIAL WAY OF SAYING THANKS, DURING CUSTOMER APPRECIATION DAYS WE WILL OFFER MANY OF OUR FAMOUS NAME BRANDS AT DISCOUNT PRICES.

<div>ALL LADIES' SWEATERS</div> <div>20% OFF</div>	<div>LADIES BLUE DENIM CHIC AND LEE JEANS</div> <div>20% OFF</div> <div>THUR., FRI., SAT.</div>	<div>MENS HUSH PUPPIES BRAND SHOES</div> <div>\$27<sup>88</sup></div> <div>SEVERAL SUG. RETAIL STYLES \$38.00</div>	<div>MENS DUCK HEAD PANTS</div> <div>\$16<sup>88</sup></div> <div>SUG. RETAIL \$24.99</div> <div>SIZES 28-42</div>
<div>LADIES soft spots</div> <div>10% OFF</div> <div>SEPT. 15TH - 17TH</div>	<div>LADIES DINGO BOOTS by ACME</div> <div>\$29<sup>88</sup></div> <div>WORLDS LARGEST BOOT CO.</div>	<div>MENS DINGO BOOTS by ACME</div> <div>\$59<sup>99</sup></div> <div>SAVE \$10.00</div> <div>WORLDS LARGEST BOOT CO.</div>	<div>A legend in jeans.® Wrangler</div> <div>WESTERN CUT PRE-WASHED</div> <div>\$19<sup>88</sup></div> <div>SUG. RETAIL \$29.99</div> <div>STR. LEG OR BOOT CUT</div>
<div>DREAM FIT PANTY HOSE</div> <div>99¢ PR.</div> <div>3-DAYS ONLY OUR REG. \$1.39</div>	<div>CONVERSE</div> <div>ALL STAR CANVAS BASKETBALL SHOES HI TOP OR LO TOP</div> <div>\$17<sup>88</sup></div> <div>SUG. RETAIL \$27.95</div> <div>WHITE OR BLACK</div>	<div>NIKE</div> <div>\$5<sup>00</sup> OFF</div> <div>Reg. Price</div> <div>DURING CUSTOMER APPRECIATION DAYS.....LADIES, MENS OR CHILDS</div>	<div>MENS LEE JEANS</div> <div>\$16<sup>88</sup></div> <div>SUG. RETAIL \$29.99</div> <div>OUR REG. DISC. PRICE \$22.88</div> <div>SIZES 28-42</div>
<div>TIMEX WATCHES</div> <div>20% OFF</div> <div>THUR. - FRI. - SAT.</div>	<div>FRUIT OF THE LOOM TEE SHIRTS PKG. OF 3</div> <div>MENS.....\$4<sup>99</sup></div> <div>BOYS.....\$3<sup>99</sup></div>	<div>3 DAYS ONLY! ALL JORDACHE MERCHANDISE</div> <div>EXTRA 10% OFF</div> <div>ALREADY REDUCED PRICES</div>	<div>BIG BEN by Wrangler</div> <div>10% OFF</div> <div>THUR. - FRI. - SAT.</div>

NEW

Whites

Mon., Thurs. 9:30-5:30, Fri. & Sat. 9:30-6:00

DOWNTOWN

Corner Dickinson Ave. & Reade Circle

Mon.-Sat. 9:00 To 8:00; Sunday 1-6

EASTGATE PLAZA

2808 East Tenth Street

'YOUR GROWING FAMILY DEPT. STORE'

Register Now For The Fall Semester

AT

The Wooten School of Music

Greenville, N.C.

Learn To Play Church-Gospel Music

Within Six Weeks

Yes, you can learn to play for your church choir or gospel group in just six weeks. The Wooten School of Music has adapted a unique chord system that promises you to be playing at the end of your very first lesson.

For further details write:

WOOTEN'S SCHOOL OF MUSIC

1012 West Fifth Street

Greenville, North Carolina 27834

Where Learning Music is a Joy and a Pleasure

757-1023 757-1135

Greenville Parks & Recreation

YOUTH

Program: FLAG FOOTBALL- Basic fundamentals of flag football and games. Location: Eppes Recreation Center and South Greenville Center. Ages: 9-12 (boys). Dates: September 19-October 26. Days & Times: Monday & Wednesday, 3:45-5:00 PM. Fee: \$3.00. Registration Date: September 12. UNLIMITED REGISTRATION

Program: YOUTH BASKETBALL - An organized youth basketball program that is held at the Elm Street Gym, South Greenville Gym, and Eppes Recreation Center. Ages as of April 1, 1989 will determine your proper age division.

Girls: Ages 9-12 - Will meet from 3:45 - 4:45 PM on Mondays & Wednesdays beginning Monday, November 28. Boys: ages 9-10 (Pee Wee) - Will meet from 3:45 - 4:45 on Tuesdays & Thursdays beginning Tuesday, November 29. Boys: Ages 11-12 (Midget) - Will meet 4:45 - 5:45 PM on Tuesdays & Thursdays beginning Tuesday, November 29. Boys: Ages 13-14 (Junior) - Will meet from 4:45 - 5:45 PM on Mondays & Wednesdays beginning Monday, November 28. Boys: Ages 15-18 (Senior) - Will meet from 3:30 - 4:45 PM on Fridays at the Elm Street Gym beginning Friday, December 2. Games will be played at J.H. Rose High School. Fee: \$10.00. Registration Date: Begins October 24-26 from 3:00-6:00 PM at the gym of your choice. Call 830-4543 for more information. LIMITED REGISTRATION

Program: ICE CREAM FLING BING - Ice cream back to school party including bingo and frisbee contest. Location: Eppes Center, South Greenville Center, Jaycee Park, & Greenville Aquatics & Fitness Center. Ages: School age. Date: Wednesday, August 24 at 7 PM. Fee: None. UNLIMITED REGISTRATION

Program: YOUTH SOCCER - Fundamental soccer skills stressed with games following. Location: Eppes Recreation Center. Ages: 6-14. Dates: September 20-October 28. Days & Times: Tuesdays & Thursdays, 3:45-5:00 PM. Fee: None. Registration Date: September 13 at Eppes Recreation Center. UNLIMITED REGISTRATION

Program: CHEERLEADING - Basic cheers will be taught and group will cheer for boys flag football games. Location: Eppes Recreation Center. Ages: 9-12. Dates: September 19-October 26. Days & Times: Monday & Wednesday, 3:45-5:00 PM. Fee: None. Registration Date: September 14 Call 830-4548 for more information. UNLIMITED REGISTRATION

Program: CHEERLEADING - Girls will learn chants, cheers and other routing. Location: South Greenville Center. Ages: 9-14. Dates: September 19-October 26. Days & Times: Monday & Wednesday, 3:45-5:00 PM. Fee: \$3.00. Registration Date: September 12-16. Call 830-4548 for more information. LIMITED REGISTRATION

VARIOUS ADULT PROGRAMS

Program: BIBLE CLASS - Instructor is Martha Tyson. Location: South Greenville. Dates: Year Round. Days & Times: Wednesdays, 9-11:45 AM. Fee: None. LIMITED REGISTRATION

Program: SPECIAL POPULATIONS HALLOWEEN CARNIVAL - A morning filled with games and activities for the handicapped youngsters. Location: South Greenville Gym. Days & Times: Friday, October 28 from 10-11:30 AM. Fee: None. Registration Date: October 28. LIMITED REGISTRATION

Program: RECESS - After school program for mentally handicapped adolescents. Location: Elm Street Gym. Age: 11-20.

Program: LADIES EXERCISE - Various exercises for slimming and trimming. Instructor is Sheila Lucas Simmons. Location: South Greenville Center. Ages: 18 & Over. Dates: September 6 to March 10. Days & Times: Tuesday & Thursday from 7-8:30 PM. Fee: \$5.00 for eight weeks. Registration Date: Any time. LIMITED REGISTRATION. Call 830-4548 for more information.

Program: EVENING LADIES EXERCISE - General routine exercise and aerobic program designed for women of all ages. Instructor is Cassandra Tyson. Location: Eppes Recreation Center. Ages: 18 & Over. Dates: October 1-December 23. Days & Times: Monday & Wednesday, 7-8:15 PM. Fee: \$4.00. Registration Date: Anytime. LIMITED REGISTRATION. Call 830-4548 for more information.

Program: SOUTHSIDE SENIOR CITIZENS CLUB - Location: South Greenville Center. Days & Times: First Monday of each month at 2-3:30 PM. Fee: \$1.00 membership fee. Call 830-4548 for more information.

Program: ADULT BASIC EDUCATION - Designed for school dropouts to further their education and work toward their general diploma. Instructor is Gina Carlton. Location: South Greenville Center. Ages: 18 & Over. Dates: September to June. Days & Times: Monday thru Thursday from 9:00-12:00 Noon. Fee: None. Registration Date: Call 830-4548 for registration and more information. LIMITED REGISTRATION

Program: SEWING - For advanced sewers. Instructor is Mary Forline. Location: South Greenville. Dates: September to November and December to March. Days & Times: Tuesdays, 10-2 PM. Fee: \$25.00. Registration Date: September Call 830-4548 for more information. LIMITED REGISTRATION





**GO, PIRATES, GO!!** ... Was all you could hear as these people and gold fans, (left to right) Brothgers Vernon Jackson, Gary Chapman, Martin Perkins, Byron of Budweiser, Tony Perkins and Mike Smith enjoyed the splendid performance by the ECU Pirate Football Squad. Over 29,000 pirate fans docked at Ficklen Stadium to witness the clobbering of Tennessee Tech. **GO PIRATES!!**

## Proclamation of Sickel Cell Disease

Sickle-cell disease is an inherited blood disorder that causes great suffering and economic strain, particularly among Black Americans. Blood cells affected by the disease assume a sickle shape, causing lifelong anemia and debilitation. Complications may include pain, infections, and chronic disability.

One out of every 294 non-white children born in North Carolina has sickle cell disease, while one out of every ten carries the sickle cell trait.

While no cure for this disease exists, treatment is available to help those with sickle cell disease lead more productive and rewarding lives. The North Carolina

Sickle Cell Syndrome Program, local health departments, federal and other state agencies work closely together to provide high quality education, testing, screening, counseling, follow-up, referral, and medical services.

Support for research on the treatment, management and cure for this disorder is vital to improving the health and quality of life of persons with sickle cell disease.

NOW, THEREFORE, I, Edward E. Carter, Mayor of the City of Greenville, North Carolina, do hereby proclaim September, 1988 as **SICKLE CELL MONTH** in the City of Greenville and urge all our citizens to become more informed

and involved in the education, treatment and care of people with sickle cell disease.

IN WITNESS WHEREOF, I have hereunto set my hand and caused the Great Seal of the City of Greenville to be affixed this the 22nd day of August, 1988.

The Eastern North Carolina Regional Association of Black Social Workers (ENCR-ABSW) will have its regular monthly meeting on Wednesday, September 14, 1988 at 7:00 p.m. t Cornerstone Baptist Church located on Allen and Stantonsburg Road in Greenville.

(Continued on page 12)

### HELP WANTED WNCT-TV

Has three (3) full time positions opened:

One (1) Production Assistant - person should be able to operate studio camera, master control, audio & other related equipment. TV production background helpful but not essential.

Two (2) Director Positions - person should be able to direct local news, production background helpful.

Send resume to PO Box 898, Greenville, NC 27834

EOE

### Fitch, Butterfield & Wynn Attorneys At Law

Greenville Office  
301 S. Evans, Suite 401  
830-1900

Wilson Office  
615 E. Nash  
291-6500

Extensions

Raleigh - 829-0911 • Rocky Mount - 446-ATTY

★ Personal Injury  
★ Real Estate

★ Wills  
★ Criminal

Over Twelve Years Of Dedicated Service



MILTON F. FITCH, JR.



G.K. BUTTERFIELD, JR.



JAMES WYNN, JR.



LEELAND Q. TOWNS



REGINALD SCOTT

"Your Friends-In-Law"

## EVANS SEAFOOD MARKET

Now Celebrating Our  
40th Anniversary  
Now Under New Ownership!

### FRESH FISH DAILY

- SWORDFISH
- RED SNAPPER
- TILEFISH
- GROUPER
- FLOUNDER
- TUNA
- SHRIMP
- SOFT CRABS
- SCALLOPS
- OYSTERS
- LOBSTER
- CLAMS

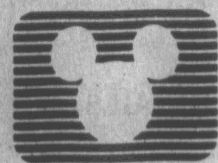
FISH — OYSTERS  
SHRIMP — CRAB MEAT

"Large Variety of  
Fresh & Frozen Seafood"

**752-2332**

203 West 9th St. • Greenville, NC

Serving Pitt &  
Surrounding Counties  
Since 1948



The Disney Channel  
SEPTEMBER

Call 756-5677  
Today!

Disney Night Time presents  
THE BEST OF HOLLYWOOD



Legendary Leading Ladies

Bette Davis in  
**ALL ABOUT EVE**  
The Academy Award-winning classic about an opportunistic girl's devotion to a famous Broadway star.

Regularly  
\$10.00

NOW ONLY

\$7.95  
Per Month

Save \$2.05

FREE Installation  
Thru  
September 30th



Greenville Cable TV

## OVERTON'S

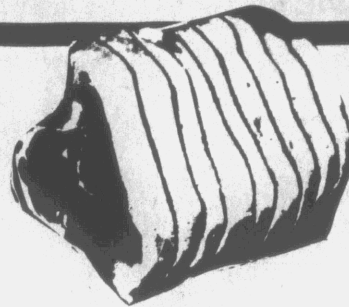
211 Jarvis Street  
OPEN Monday Thru Saturday 8 AM - 8 PM  
Sundays 1 PM - 6 PM

PRICES EFFECTIVE WEDNESDAY thru SATURDAY  
SEPTEMBER 7 — SEPTEMBER 10, 1988

LOIN END  
PORK ROAST

**99¢**

LB.  
SLICED FREE!!!



FRESH FRYER  
LEG QUARTERS

**38¢**

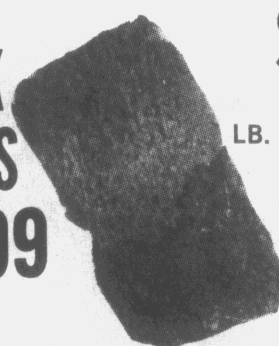
Limit 2 W/\$10.00  
Food Order

FRESH  
CUBE STEAK

**\$1.99**

10 LB.  
NECK  
BONES

**\$2.99**



LUTER'S SMITHFIELD  
REG. THICK OR THIN

BACON

**\$1.19**

FRESH FROZEN  
SPARERIBS

**\$1.29**

LB.



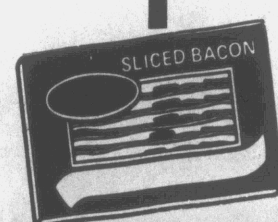
OSCAR MAYER ALL MEAT

WEINERS

BUY 1, GET 1 FREE

**\$2.29**

1 LB. PKG.



Welcome Back ECU  
Students & Faculty

ICE CREAM  
SANDWICHES

WELCH'S

GRAPE JUICE

ALL 2 LITER

PEPSI

PAIGE GIANT

PAPER TOWELS

DUDLEY FARM

APPLE JUICE

FAB GIANT SIZE (Limit 1 W/\$10.00 Food Order)

DETERGENT

JACK RABBITT

POP CORN

GREEN GIANT

FROZEN FOOD

KINGSFORD

CHARCOAL

TOTINO'S ALL VARIETIES

PIZZAS



**99¢**

**79¢**

**99¢**

**99¢**

**99¢**

**\$1.99**

**99¢**

**79¢**

**69¢**

**\$2.49**

**79¢**

**79¢**

**79¢**

FRESH RED  
POTATOES

**\$1.00**

5 LB.

FRESH BAKING  
POTATOES

**99¢**

PKG. OF 5

SEEDLESS WHITE  
GRAPES

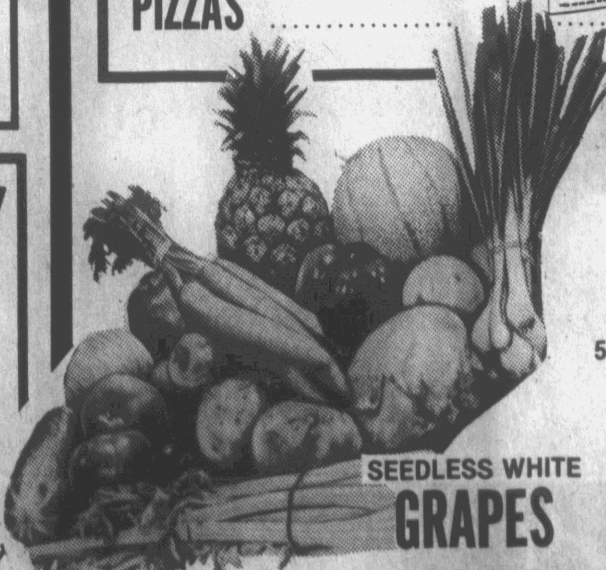
**69¢**

LB.

YELLOW  
ONIONS

**79¢**

3 LB. BAG





# Sickle Cell Teleconference

**SUBJECT:** Bridging the Gap: Comprehensive Care for North Carolina's Sickle Cell patients and their families.

**OBJECTIVES:** To describe the Program and services of the North Carolina Sickle Cell Syndrome Program and outline the model of care.

To initiate discussion between Public and private provider of care to sickle cell patients on areas of collaboration.

**WHERE/WHEN:** Wednesday October 6th 1988 1-3 P.M.  
College of the Albemarle  
Elizabeth City, North Carolina  
Pitt Community College  
Greenville, North Carolina  
Coastal Carolina Community College  
Jacksonville, North Carolina  
Craven Community College  
New Bern, North Carolina  
Wilmington, North Carolina  
Halifax Community College

Weldon, North Carolina  
**SPONSORED BY:** North Carolina Department of Human Resources Division of Health Services Sickle Cell Syndrome Program (919) 733-0385

**PROVIDED FOR:** Physicians nurses, and other health professionals allied health providers social workers and other human service providers persons interested in sickle cell. To register call (919) 733-0385.

**VOTE**  
for  
**JIM ROUSE**

**Pitt County  
Board of Commissioners**

**District I  
November 8, 1988**

*"Together We Can Make  
The Difference"*

**Paid for by the committee to elect  
Jim Rouse for Commissioner District I**



**PIRATES ON THE GO . . .** Shown is WOOW Radio and the Chief Editor of The 'M' Voice, Jeff Savage with the Pirate Mascott at an ECU Football game.

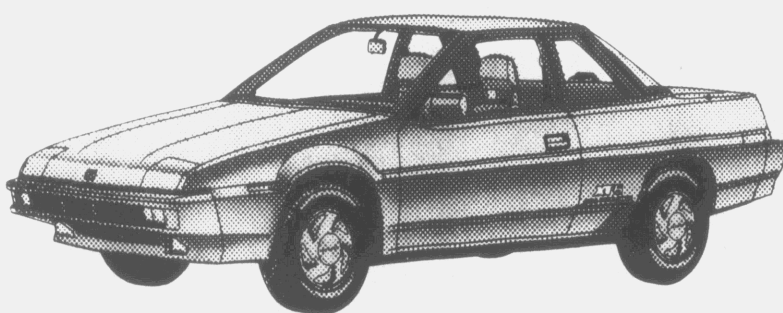
## NOTICE PUBLIC SALE

**ALL NEW SUBARUS  
\$100 UNDER INVOICE!**

### 1988 XT 6

Stock # 1167, Full time 4 wheel drive

DEALER LIST PRICE	<b>\$18,980</b>
SUBARU DISCOUNT	<b>-3,479</b>
FACTORY REBATE	<b>-1,000</b>
<b>SALE PRICE</b>	<b>\$14,501</b>



### GL 10 STATIONWAGON

Stock # 1236

DEALER LIST PRICE	<b>\$16,784</b>
SUBARU DISCOUNT	<b>-3,213</b>
FACTORY DISCOUNT	<b>-1,000</b>
<b>SALE PRICE</b>	<b>\$12,571</b>



### GL 10 TURBO

Stock # 1182, 4 door sedan

DEALER LIST PRICE	<b>\$17,342</b>
SUBARU DISCOUNT	<b>-3,473</b>
FACTORY REBATE	<b>-1,000</b>
<b>SALE PRICE</b>	<b>\$12,869</b>



### GL 4 DOOR

DEALER LIST PRICE	<b>\$13,467</b>
SUBARU DISCOUNT	<b>-2,680</b>
FACTORY REBATE	<b>-700</b>
<b>SALE PRICE</b>	<b>\$10,087</b>



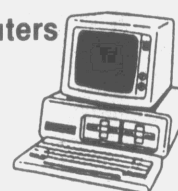
*Joe Cullipher*  
**SUBARU**

**605 W. Greenville Blvd. • Greenville, N.C. • 756-8885**  
**Sales Department Open Until 9:00 p.m.**

## Personal Computer Training

**By McCloud & Associates, Inc.**

Introduction to Microcomputers  
Lotus 1-2-3  
d-Base III-Plus  
Word Processing  
Training for Kids  
Special Topics in Microcomputers

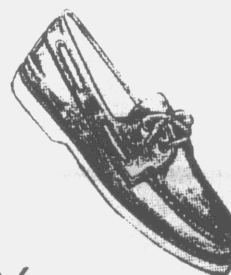


**To Strengthen your competitive position  
through Quality and Quantity training**

**Enrollment Limited, Please Register Early  
Call (919) 752-0120**

## Men's Shoes

By Allen Edmonds, Bass  
E.T. Wright, French Shiner  
Bostonian, Top Sider  
Nunn Bush & Stacy Adams  
& Others



All Priced **70% - 90%** Off Reg. Price  
(a good selection of large sizes)



### Brand Name Silk Ties

Reg. 13.50-15.00

Our Price **5 For \$20.00**  
Irregular Ties 2 For \$5

**The Shoe Outlet**  
Corner of Ninth & Washington Streets  
(next door to Evans Sealfood)

★ ★ ★ ★ ★ ★ ★ ★ ★ ★ ★ ★ ★ ★ ★ ★

## VAL-U-STOP



**WIN CARS AND CASH!!  
SEE STORE DISPLAY FOR DETAILS**

**LANCE POTATO CHIPS  
99¢**

**We Also Have . . .**

- Sun Country Wine Coolers - 89¢
- Schlitz Malt Liquor Bull 24 oz. - 1.19
- Bag of Ice - 85¢

**"BACK TO SCHOOL  
SUPPLIES"**

**• Plus A Whole Lot More!**

**Conveniently Located Near You At  
The Corner of Third St. & Memorial Dr.**

★ ★ ★ ★ ★ ★ ★ ★ ★ ★ ★ ★ ★ ★ ★ ★





**WE'RE NUMBER ONE!!** . . . Pirate Senior Flint McCallum from Rowland, NC proudly displays the No. 1 sign in the fourth quarter of last Saturday's impressive win over Tennessee Tech. The 191 pound defensive back believes ECU will win over all their games similar to this one. The final score was a whopping 52-13 victory for East Carolina.

## HELP WANTED

Greenville Housing Authority Has Job Opening For:

### RECEPTIONIST/TYPIST

Requires experience dealing with the public, 50 wpm typing. Starting salary is \$10,753.60. Test will be administered. Apply at Employment Security Commission, 3101 Bismark Ave., Greenville, NC 27834.

Deadline for accepting applications is September 28, 1988. — 8440577. An Affirmative Action/Equal Opportunity Employer and comply with Immigration Reform and Control Act of 1986.

**THIS IS YOUR PITT COUNTY VOTER CARD!**  
THIS VOTER CARD IS FURNISHED BY THE PITT COUNTY BOARD OF ELECTIONS FOR YOUR INFORMATION AND CONVENIENCE. Please check all information for accuracy. If you have moved from the address listed on your Voter Card, please complete reverse side and return as indicated to transfer your address. Transfers are subject to deadlines prior to each election. To ensure your eligibility to vote, call the Elections Office at 758-4683 for clarification or further information.

THIS CARD IS FOR YOUR INFORMATION AND TRANSFER ONLY AND WILL NOT BE REQUIRED TO BE SHOWN AT THE VOTING PLACE.

VOTER REGISTRATION CARD		PIT COUNTY	
NAME	John Doe	RESIDENCE	Route #1, Box 2
DATE OF BIRTH	000000	DATE OF BIRTH	000000
John Doe's signature		DATE OF SIGNATURE	

PLEASE SIGN AND REMOVE CARD FROM CARRIER

ONLY DEMOCRATS WHO RESIDE IN DISTRICT A will be eligible to vote in the new 2nd Democratic PRIMARY ON October 11. Portions of District A run through 10 precincts as follows:

BELVOIR  
BETHEL  
CAROLINA  
GREENVILLE #1  
GREENVILLE #3  
GREENVILLE #4  
GREENVILLE #5  
GREENVILLE #6  
GREENVILLE #7  
GREENVILLE #8

SOME OF THE RESIDENTS IN THE ABOVE NAMED PRECINCTS DO NOT LIVE IN DISTRICT A. SEE THE FOLLOWING MAPS OF DISTRICT A, WHICH IS A COMBINATION OF DISTRICTS 1 and 2, TO DETERMINE IF YOU LIVE IN DISTRICT A AND WILL BE ELIGIBLE TO VOTE.

## Series of meetings to honor NC Commissioner of Agriculture, Jim Graham

**RALEIGH** - A series of meetings honoring N.C. Commissioner of Agriculture Jim Graham has been scheduled for the next several weeks during September and October.

According to a spokesman for the commissioner, individuals and groups with farm associations want to show their appreciation for Graham's support for agriculture during his 24 years as commissioner of agriculture.

Graham is seeking a seventh, 4-year term for the post he has held since 1984.

The first meeting is a \$10 catfish fry, a political first Graham said, scheduled for Tuesday, September 6 in Winterville (Pitt Co.) a 6 p.m. in the Kiwanis Building.

Next is a chicken and pig barbecue

at the fairgrounds in Salisbury on Friday, September 9 at 6 p.m. Price \$10.

Beef barbecue is on the menu at Oak Summit Farms, Winston-Salem, set for 6 p.m., Friday, September 16. Beef costs a little more, \$20.

Asheville, at the Western N. C. Agricultural Center on October 1, will be the site of the next feed. Details are pending. Finally, a \$15 breakfast will be held at the State Fairgrounds in Raleigh, October 6 at 8 a.m.

For information and tickets, contact Deacon Bowie at Jim Graham for Commissioner of Agriculture Headquarters, 721 Tucker St., Raleigh. Phone (919) 834-2442.

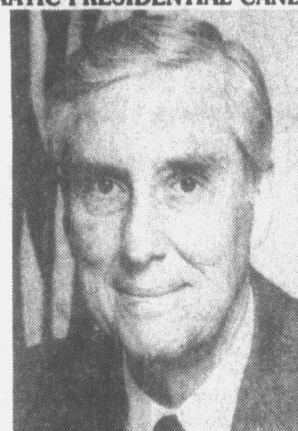
**FOR ALL YOUR ADVERTISING NEEDS  
CALL OUR SALES DEPARTMENT  
757-0425!!**

## COMING TO GREENVILLE FRIDAY



GOV. MICHAEL DUKAKIS  
DEMOCRATIC PRESIDENTIAL CANDIDATE

*This Is A  
Historical  
Event!!*

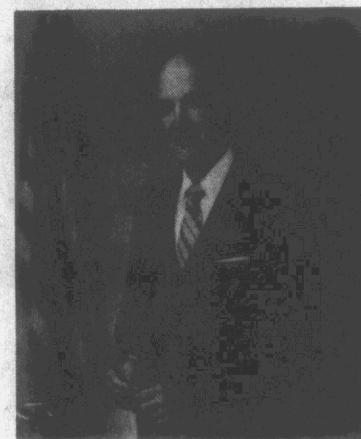


SEN. LLOYD BENSON  
DEMOCRATIC VICE-PRESIDENT CANDIDATE

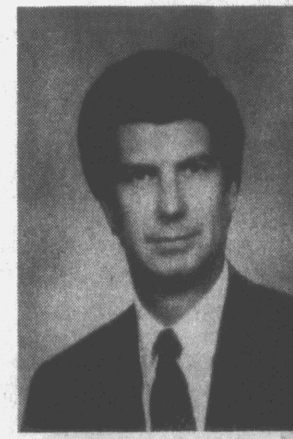
*Come  
Meet The  
Candidates*



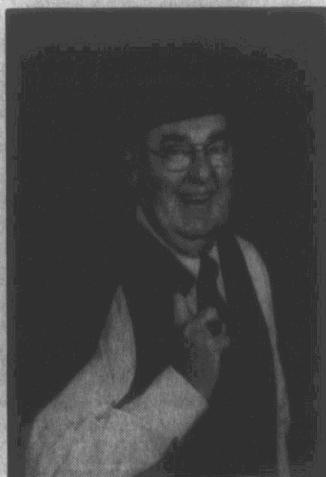
SEN. TOM TAFT  
9TH DISTRICT



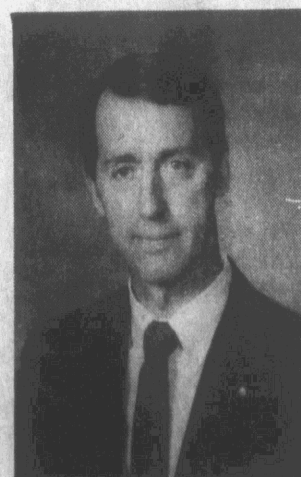
REP. ED N. WARREN  
6TH DISTRICT



REP. WALTER B. JONES, JR.  
6TH DISTRICT



JIM GRAHAM  
N.C. AGRICULTURAL COMMISSIONER



BOB ETHERIDGE  
DEMOCRATIC CANDIDATE FOR  
NC SCHOOL SUPERINTENDENT



LT. GOV. BOB JORDAN  
DEMOCRATIC GUBERNATORIAL CANDIDATE



REV. FARNEY MOORE  
CANDIDATE FOR SEAT B  
PITT CO. COMMISSIONERS

**This Friday,  
September 16, 1988  
12:30 PM  
Pitt County Courthouse  
Greenville, NC**

**BRING THE ENTIRE FAMILY**

**ACE  
Hardware**

**ACE  
BEST  
BUYS  
9/88**

**3.33**  
WHILE  
SUPPLIES  
LAST

As Advertised  
On  
National T.V.

**ACE  
Hardware**



**Ace Professional  
Grade Duck Tape**  
(A-600)  
(A-2904)  
2" x 60 yd. roll of strong, sticky & water-  
proof duck tape. It's America's most  
popular tape for household repairs.

YOUR CHOICE  
YOU  
PAY

**2.19**  
Each

WHILE  
SUPPLIES  
LAST

Less  
Rebate  
**-2.00**

Your  
Final  
Cost

**19¢**  
LIMIT



As Advertised  
On  
National T.V.

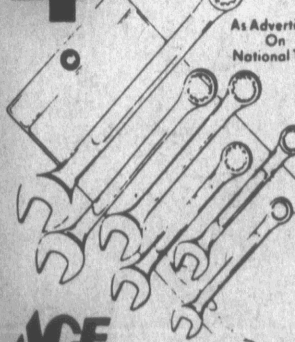


**Elmer's Silicone  
Rubber Sealer-10.3 Oz.**  
(E-910,911)  
(11454,11480)  
Clear or white silicone rubber sealer  
provides a permanently flexible seal.

**4.69**  
WHILE  
SUPPLIES  
LAST

As Advertised  
On  
National T.V.

**ACE  
Hardware**



**Ace 6-Pc.  
Combination Wrench Set**  
(25774,5)  
(25774,5)  
Drop-forged, chrome-plated steel  
wrench set in SAE or metric sizes.

**2.99**  
WHILE  
SUPPLIES  
LAST

As Advertised  
On  
National T.V.

**ACE  
Hardware**



**Ace 39 Gallon  
Trash & Lawn Bags**  
(A3039)  
(68574)  
30 jumbo size bags on easy tear-off  
roll. Super-tough and tear resistant.

**GARRIS  
EVANS  
Lumber Co., Inc.**

**ACE Lumber and  
Building Supply**

701 West 14th Street

Open Weekdays 8 to 5,  
Saturday 8 to Noon

**752-2106**



# Barrett receives degree in Mortuary Science

Congratulations to Bro. Quentin Barrett of Ayden, who recently graduated from Gaston-Jones Mortuary College in Atlanta, GA on August 8.

He received his degree in Mortuary Science and Funeral Service.

Barrett is a 1984 graduate of Ayden-Grifton High School in Ayden. He is the youngest of six children. His parents are Ms. Nanada Cox Gardner of Ayden and Mr. Elbert Cox of Washington, DC.

Quentin's future plans include returning to where he started at the Norcott and Company Funeral Homes of Ayden and Greenville to further his career. Congrats, Quentin.

# Proclamation

(Continued from page 9)

All members and potential members are encouraged to attend as we map out our future agenda. If you would like to join ENCR-ABSW, membership is \$30.00 a year. Join ENCR-ABSW today!!!

# Medley Chapel sponsoring trip to pottery

Medley Chapel C.M.E. Church of Bethel is sponsoring a trip to Williamsburg Pottery on Saturday, September 17.

The trip is \$20.00. Anyone interested in joining the group should contact Mrs. Lenaritha Sherrod.

# Airport expansion plan impacts Black Community

The proposed expansion of the Pitt-Greenville Airport has developed into the kind of problem that black citizens here have not often faced. Those living beneath the flight paths near the airport would be most directly effected by the proposed expansion. Around the nation issues about the environment have collided with concern about economic growth.

The conflict between quality-of-life and progress will now cause blacks in Pitt County to deal with an issue that has now come close

# What Is Seat 'A' All About

BY JIM ROUSE

Even if you don't pay much attention to politics, the long and complicated election process has taken place in Pitt County's race for Seat A of the County Commission is something that you've heard about by now.

With all the run-offs, recounts, hearings, and news stories; it's easy to lose sight on what the race for Seat A is all about. Some people believe that the race is about unfair decisions by the county election officials that caused D.D. Garrett not to be declared the winner of the Seat. Others see it as a contest for power on the Commission between residents of North West Greenville and those who live in Northern Pitt County, including Bethel. The fact is: Seat A was recently created in an agreement between Pitt County and the Federal Government intended to increase chances for blacks in

Districts 1 and 2 of electing a black representative for the County Board of Commissioners. The Seat A race is not only D.D. Garrett or any other individual. The race for Seat A is a test of whether or not blacks in Pitt County are united enough to accomplish something designed for their own good. D.D. Garrett hap-

pens to be the person who has endured the process to this point. On October 11, the new election for Seat A of the Pitt County Board of Commissioners will be held. On October 12th everyone will know exactly which people in Districts 1 and 2 are really united. That's what the race for Seat A is really all about!!

For All Your Advertising Needs Call Our Sales Department at 757-0425


**VOTE**  
for  
**JIM ROUSE**

Pitt County  
Board of Commissioners

**District I**  
November 8, 1988

*"Together We Can Make  
The Difference"*

Paid for by the committee  
to elect Jim Rouse for  
Commissioner District I





## HELP WANTED

### Construction Coordinator

Temporary employment as a construction and remodeling manager. Must have 5 years experience in general contracting and associated trades. Must be able to work with public and other employees. Previous demonstrated coordinator employment an asset. 2 year technical school with emphasis on construction trades desired. Must be schedule conscientious, capable of maintaining records, capable of reading blueprints and be people oriented. Applications being taken until 5 p.m. on 23 September 1988 at 1103 Broad Street, Greenville, North Carolina 27835. Bring resume. An Equal Opportunity Employer.

## SHAWN'S — NO. 1 & NO. 2

KEARNEY PARK/BROAD STREETS



Hamburgers .....	85¢
Cheeseburgers .....	95¢
Chitterling Tray .....	1.25
..... &	2.00
BBQ Sandwich .....	1.30
Small BBQ Tray .....	1.75
Large BBQ Tray .....	2.25

### Hot Foods

Hot Dogs — 3/\$1.00

2 Liter Minute Maid — \$.99

to home. Planes have ascended and descended over highly populated black neighborhoods for many years - ask anyone who lives in Riverdale. Lately, the number of flights have been increasing and the planes are somewhat bigger. Residents living in the area recognize the negative environmental impact of living near an expanded airport. Increased noise and the ever present possibility of a crash are examples of the environmental concerns that residents face. As if the environmental concerns aren't enough to be concerned with, the growth and progress side of the controversy are equally related to the black residents of neighborhoods near the airport. Within some of these neighborhoods are many of the unemployed and underemployed in our city. The low wage and seasoned job markets have forced many to earn salaries that don't support a decent standard of living. Only an expanded job market in the area will reverse that trend. Airport expansion supporters believe that if Greenville is to develop its growth potential, a bigger airport with bigger planes will be needed.

Ready or not, people who live in the vicinity of the Pitt-Greenville Airport will be measuring the impact of the decision to expand or not to expand the airport. Either way will affect the community.

# Warren attends tourism growth meeting

Representative Ed Warren attended the Legislative Study Committee Meeting on Tourism's Growth and Effect in Boone. The topics discussed were:

1. The possibility of establishing regional director positions within the Division of Travel and Tourism to serve as liaisons between the state and local chambers, travel bureaus, and tourism development authorities.
2. The need for additional funds to support North Carolina State Parks.
3. The feasibility of creating permanent tours within various regions of the state, such as a Governor's Tour of the east to highlight homes of former North Carolina governors.
4. The need for more welcome centers in highly traveled areas.
5. The importance of improvements to North Carolina's highways, airports, ferries, and bridges.

Among those who made presentations to the committee were Hugh Morton, Sr., owner of Grandfather Mountain, Robert Snead, Vice Chancellor of Development at Appalachian State University, and Tony Seamon, Chairman of the State Travel Council.

Representative Warren is chairman of the House Committee on Tourism and Growth.

## ROBERT L. WHITE

Attorney at Law

Uncontested Divorces .....	\$100
Uncontested Separation Agreements .....	\$100
• • •	
Hours by appointment including evenings and weekends	
• • •	
Fees do not include court cost or filing fees	
• • •	
106 HOWELL STREET GREENVILLE, NC 27834	
(919) 355-9111	

## The efficient way to total fitness.



**Exercise Most Major Muscles on Schwinn's Air-Dyne.** Unique moving hand levers let you exercise your upper body as pedal operation tones and builds your legs and hips. Schwinn's Air-Dyne™ is designed to provide the aerobic exercise you want to improve your cardiovascular system.

**Use it 20 Minutes Every Other Day.** That's all it takes on the Schwinn Air-Dyne to work toward and maintain total fitness. And you can do it in the convenience of your own home, whatever the weather.

**Backed by Schwinn's "No-Time-Limit" Warranty.** The Air-Dyne is guaranteed to be free from defects in materials and workmanship by the famous Schwinn "No-Time-Limit" warranty. Assembled and ready to take home from our showroom today.



**Come in for A Test Ride.**

- SCHWINN
- TREK
- RALEIGH
- CENTURION
- JAMIS
- (EARTH CRUISERS)
- PEUGEOT



## SCHWINN® AIR-DYNE™

530 COTANCHE STREET  
GREENVILLE, NC 27834  
(919) 757-1816 OR 757-3616  
1-800-682-7050  
DOWNTOWN GREENVILLE  
(Beside S & R Computers)  
MIKE MCWHIRT

## BICYCLE POST

INC.  
QUALITY BIKE  
SALES & SERVICE



# SERVISTAR

## The Spotlight's on Savings

Now thru Sat., Sept. 17

<b>GENERAL ELECTRIC</b>  <b>4-Pack Soft White Light Bulbs</b> Medium base soft white bulbs. 40W 60W, 75W or 100W. Stock up and save! #13257, 41028, 32, 36 <b>SPECIAL PRICE \$1.99</b> per 4-pack	<b>kwikset.</b>  <b>Tylo Entry Lockset</b> Standard deadbolt for all exterior doors. Turn button interior, key exterior. Full lip strike. 2 1/4" and 2 1/2" backsets available. #4007-3 <b>SPECIAL PRICE \$7.49</b>
<b>Aqua-Line</b>  <b>Two-Handle Kitchen Faucets</b> Washless faucet features 2 acrylic handles. For 3 hole sink, 8" centers. Easy to install. #TC1100, 400 <b>Without Spray \$24.99</b> <b>With Spray SPECIAL PRICE \$29.99</b>	<b>SERVISTAR</b>  <b>3/4" x 25' Chrome Tape Rule</b> Features ultra rigid tape, durable chrome case and blade locking mechanism for accurate readings. #F325 <b>SPECIAL PRICE \$5.99</b>
<b>SERVISTAR</b>  <b>8" Clamp Light with 6' Cord</b> 8" metal ball shade with 6' cord. Ideal for shop or #54170 <b>SPECIAL PRICE \$4.99</b>	<b>ELECTRIPAK</b>  <b>Decorative Dusk-To-Dawn Light</b> Features heavy cast aluminum housing. Dark bronze finish. Mercury vapor lighting costs 65% less to operate than comparable incandescent lighting. Photocell control, bulb, mounting hardware included. #SV175 <b>SPECIAL PRICE \$35.99</b>
<b>WERNER</b>  <b>Heavy-Duty Power Painter™</b> Handles difficult jobs like shingles, siding, stucco, brick. Adjustable spray control, two lifetime ceramic spray tips. Flexible tip extension for floors or ceilings. Easy to use #230 <b>SPECIAL PRICE \$79.99</b>	<b>SERVISTAR</b>  <b>Wheelbarrow</b> 4 cu. ft. rolled edge seamless tray. Wide profile pneumatic tire and steel wheel. Some assembly required. #5W <b>SPECIAL PRICE \$23.99</b>
<b>KNAUF &amp; VOGT</b>  <b>8" x 24" Glass Shelf</b> Decorative shelf features tempered glass with sturdy one-piece support that mounts almost anywhere. #89BR30624 <b>SPECIAL PRICE \$15.99</b>	<b>SERVISTAR</b>  <b>32-Gal. Roughneck Trash Can</b> Toughest, most durable trash container available. Endures sub-zero temperatures and steam cleanings. Tight fitting lid locks in odors. #2894 <b>SPECIAL PRICE \$9.99</b>
<b>Genova</b>  <b>CPVC Tubing</b> For hot or cold water. Corrosion-resistant vinyl. Copper pipe sizes. #50005, 7 1/2" x 10' SPECIAL PRICE \$1.49 3/4" x 10' SPECIAL PRICE \$2.99	<b>GENERAL ELECTRIC</b>  <b>Silicone II Window &amp; Door Sealant</b> Weatherproofs and insulates for up to 50 years. Won't crack, chip or peel. Use indoors or out. Clear or white. 10.3 oz. #5000, 10 <b>SPECIAL PRICE \$2.99</b>

Individual dealers may vary quantities. Individual dealers may not stock all items. Some items may require extra to ship and carry terms only.

Use your SERVISTAR Credit Card at participating stores.

## Hardware Lumber Home Centers

# SERVISTAR



## GLOBE HARDWARE CO.

120 West 5th St., Greenville, N.C.  
"A FULL STOCK HARDWARE STORE WITH OLD-FASHIONED SERVICE"  
FREE CUSTOMER PARKING  
LOT BESIDE STORE  
FREE DELIVERY-CHARGE  
ACCOUNTS WELCOMED

## SERVICES RENDERED

### Willing to Make Deliveries to Raleigh on Tuesdays & Thursdays.

For More Info Contact  
**Jeff Savage at 757-0425**