

The East Carolinian

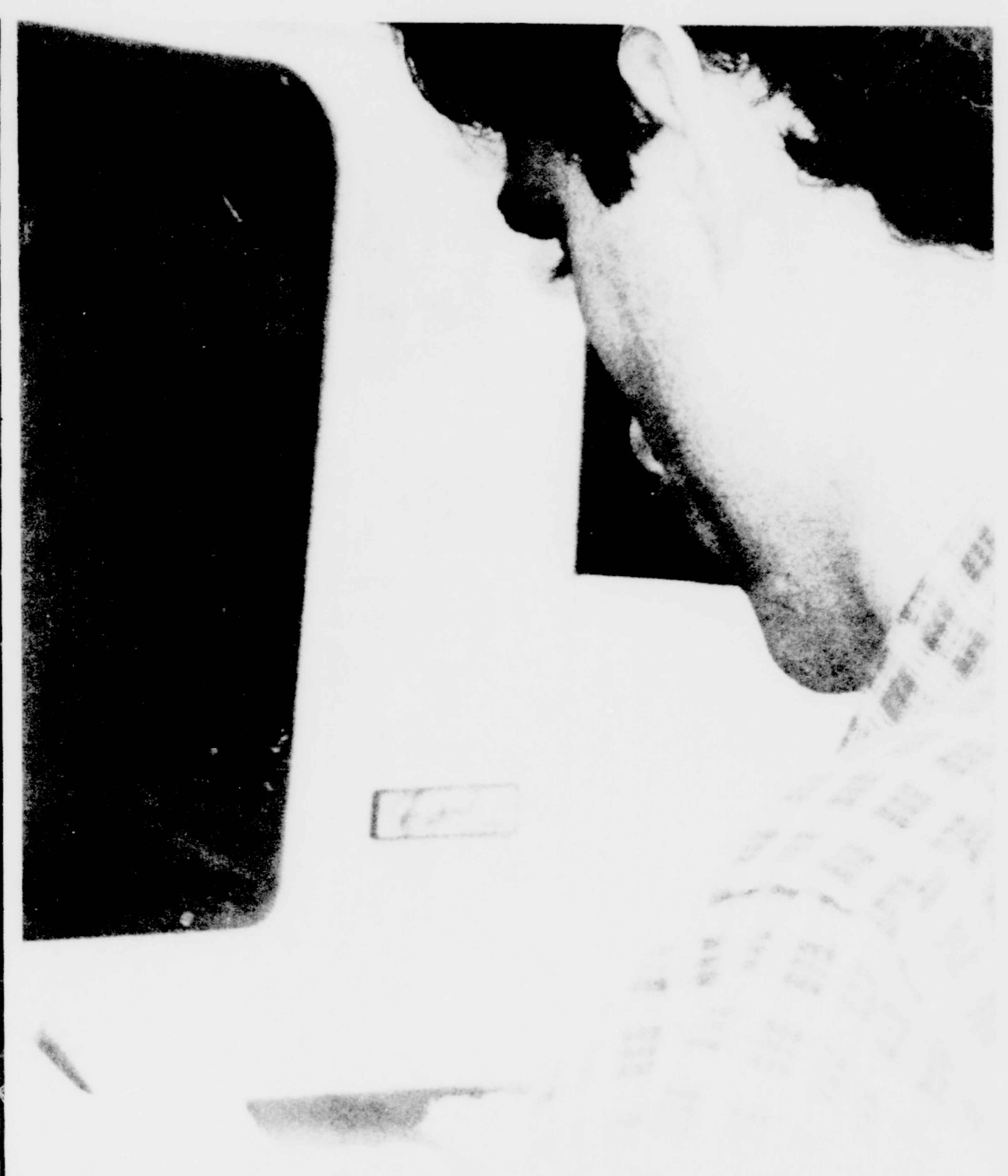
Serving the East Carolina campus community since 1925

Wednesday, November 6, 1985

UNIVERSITY CALENDAR Spring Semester 1986

(Actual class days: 14 Mondays, 15 Tuesdays, 14 Wednesdays,
14 Thursdays, 14 Fridays, 14 Saturdays)

| | |
|-------------------------------|---|
| December 11, Wednesday | Last day for persons holding a bachelor's degree to apply for admission to Graduate School for the spring semester |
| December 20, Friday | Last day for continuing students to pay or secure spring semester fees without penalty |
| January 8, Wednesday | If fees are not paid by 4:00 p.m., all schedules both graduate and undergraduate will be cancelled. |
| January 9, Thursday | Registration Day and Change Day |
| January 10, Friday | Change Day (Drop-Add) and Registration |
| January 13, Monday | Classes Begin, Schedule Changes, (Drop-Add), Late Registration (undergraduate and graduate students); Last day to apply for graduation in May |
| January 14, Tuesday | Last day for Drop-Add and Late Registration |
| February 21, Friday | Last day to drop a course or withdraw from school (undergraduate students) |
| March 9-16 (Sunday to Sunday) | Spring Recess |
| March 17, Monday | 8:00 a.m. — Classes resume |
| TO BE ANNOUNCED | Early Registration for fall semester and summer session 1986 |
| March 31, Monday | State Holiday; no classes |
| April 17, Thursday | Last day to remove incompletes given during fall semester, 1985 |
| April 29, Tuesday | Classes end |
| April 30, Wednesday | Reading Day |
| May 1, Thursday | Exams begin |
| May 8, Thursday | 11:00 p.m. — Exams for spring semester close |
| May 10, Saturday | Commencement |



With the aid of computers like the one above the on-line registration system makes registering for classes a far less time consuming process than the one that has confronted students in the past which sometimes required waiting in line for hours.

Instructions For Using On-Line System

Prior to using the on-line registration system, each student will develop a schedule containing no more than 18 hours of primary courses and no more than 15 hours of alternate courses that meets with his/her advisor's approval as indicated by the advisor's signature on the registration form. All "special permissions" (e.g. extra hours, majors only courses, instructor's permission, ect.) for course registration must be secured prior to using the on-line registration system.

Allocation of Registration Days will be as follows:

- Nov. 14-15 Graduating Seniors, Graduate Students, Petition Students and Seniors.
- Nov. 18-19 Juniors and those eligible prior to this period.
- Nov. 20-21 Sophomores and those eligible prior to this period.
- Nov. 22, 25-27 All students eligible.

Undergraduate students will be classified as to class standing as follows:

- 0-31 s.h. credit Freshmen
- 32-63 s.h. credit Sophomores
- 64-95 s.h. credit Juniors
- 96 or more s.h. credit Seniors

In order to smooth the distribution across terminals, students may declare a major or change a major at any time subject to current university policy and the policy of the receiving department.

Each unit with a terminal for on-line registration will schedule a minimum of four hours per day for registration during the entire registration period. The days and

hours of operation should be clearly posted. The terminals in the Registrar's Office will be open 8:00a.m. to 5:00p.m. during the entire registration period.

Students have access to all open terminals but they are strongly advised to use the following location depending on their classification.

- Declared Majors — Undergraduate Major Department
- General College Students, General College and Registrar's Office
- Petition Students Registrar's Office (required)
- Degree Graduate Students Major Department
- Non-Degree Graduate Students Registrar's Office
- Students Receiving V.A.

Benefits Registrar's Office (required)

- Evening College Students Registrar's Office

Procedures for terminal utilization will be as follows:

1. The student will present the registration form signed by the advisor (along with required special permissions) to the computer operator. No changes to the form will be allowed.
2. The operator shall use a maximum of 15 minutes to complete the regular session registration process.
3. The operator will enter the student's primary course request. If the requested schedule is possible, no further changes will be allowed.
4. If step 3 results in a partial

schedule, the operator will allow the student to choose other sections of primary course requests and/or alternate course requests. If a schedule is possible with the primary courses and alternates listed on the registration form and the student chooses not to accept the schedule, a partial schedule may not be obtained. No schedule will be obtained and the student will be instructed to return at a later time.

5. If the 15 minute time constraint is encountered or the list of primary and alternate courses is exhausted during step 4, the student will be given a partial schedule. The student should then consult with his/her advisor to identify additional courses and complete the registration process at a later time.

6. If a student does not receive a course because all sections are closed and the course is required for the student (no alternates allowed), the student may obtain a partial schedule and seek special permission to be added to the course from the department involved. Registration will be completed in the department granting such special permission.

A drop/add period will continue to be scheduled at the beginning of each semester. Students may change their schedules at that time with their advisor's approval if the change is precipitated by failing a course, not completing a prerequisite, completion of course since registration, course or section being cancelled or having a partial schedule.

Old System Inefficient New On-Line System Big Improvement

By ELIZABETH PAGE
Staff Writer

It is that time of the year again. Time to visit the advisor, and decide what classes are needed to graduate.

Fortunately, some students don't remember the hassle associated with the old process of preregistration — the lines, the cards, and the waiting. However, those who do remember the old system remember the fear of not getting the desired class, or the possibility of standing in drop/add for what seemed endless hours.

"Preregistration is a breeze compared to previous years," said Lisa Huggins a senior major-

ing in Communications, "I only wish that the system would have been here earlier."

According to Assistant Registrar Bobbie Austin, students as well as faculty like the new system, which has only been in effects since Spring 1985. "The new system is much quicker than the old system," said Austin, "the students just like it better."

One of the biggest problems with the old system of preregistration was the fact that the student didn't know if he got his course. Under the new system, the student knows whether or not he got his course immediately. "The only way a student wouldn't get a course is if

the section was cancelled," said Austin. "Knowing what course you have right away is the biggest advantage of the new system," added Austin.

Knowing what course a student has right away is not the only advantage of the system, according to the Austin. The new system also helps to eliminate those lengthy lines at drop/add. Under the new system, there are only a few ways that a student can go through drop/add. According to Austin, a student can go through drop/add only if he failed a course, didn't complete a prerequisite, previously completed the course, or an has an impartial schedule. "The only other way to

go through drop/add is to get special permission from Dean Baily, Dean of the General College," said Austin.

One of the problems of the system is the fact that it doesn't guard against a student getting a class without the proper prerequisites. Austin said that it is up to the student and his advisor to insure nothing like this happens. Plans in the future call for such a guard on the system, added Austin.

Students will find 50 terminals located on campus to serve their preregistration needs.

Regulations

An undergraduate student is not permitted to select courses which are more than one classification removed from the student's own classification. There are occasions on which exceptions to this regulation may be deemed desirable and necessary by the student's advisor and/or dean. The Registrar will honor exceptions two or more numbers either above or below the student's classification, if the registration or drop-add form contains the initials of the advisor and/or dean written on a line with the course that is involved in the regulation.

Senior-Graduate (5000 — 5999) courses are taught at the

graduate level primarily for graduate students; graduate students and senior majors will be admitted and selected junior majors and selected seniors from other areas may be admitted with the written consent of the chairperson of the department or dean of the school in which the course is offered. A unit may include 5000-level courses for undergraduate degree requirements.

Elective courses in any curriculum may be taken from any field and are decided upon with the approval of the adviser.

Special Registration Issue

| COURSE | SECT | COURSE DESCRIPTION | DAYS | TIME | CRSE |
|--------|------|---------------------|------|------|------|
| 1100 | 1100 | ILLUSTRATION I | | | |
| 1100 | 1100 | ILLUSTRATION II | | | |
| 1100 | 1100 | ILLUSTRATION III | | | |
| 1100 | 1100 | ILLUSTRATION IV | | | |
| 1100 | 1100 | ILLUSTRATION V | | | |
| 1100 | 1100 | ILLUSTRATION VI | | | |
| 1100 | 1100 | ILLUSTRATION VII | | | |
| 1100 | 1100 | ILLUSTRATION VIII | | | |
| 1100 | 1100 | ILLUSTRATION IX | | | |
| 1100 | 1100 | ILLUSTRATION X | | | |
| 1100 | 1100 | ILLUSTRATION XI | | | |
| 1100 | 1100 | ILLUSTRATION XII | | | |
| 1100 | 1100 | ILLUSTRATION XIII | | | |
| 1100 | 1100 | ILLUSTRATION XIV | | | |
| 1100 | 1100 | ILLUSTRATION XV | | | |
| 1100 | 1100 | ILLUSTRATION XVI | | | |
| 1100 | 1100 | ILLUSTRATION XVII | | | |
| 1100 | 1100 | ILLUSTRATION XVIII | | | |
| 1100 | 1100 | ILLUSTRATION XIX | | | |
| 1100 | 1100 | ILLUSTRATION XX | | | |
| 1100 | 1100 | ILLUSTRATION XXI | | | |
| 1100 | 1100 | ILLUSTRATION XXII | | | |
| 1100 | 1100 | ILLUSTRATION XXIII | | | |
| 1100 | 1100 | ILLUSTRATION XXIV | | | |
| 1100 | 1100 | ILLUSTRATION XXV | | | |
| 1100 | 1100 | ILLUSTRATION XXVI | | | |
| 1100 | 1100 | ILLUSTRATION XXVII | | | |
| 1100 | 1100 | ILLUSTRATION XXVIII | | | |
| 1100 | 1100 | ILLUSTRATION XXIX | | | |
| 1100 | 1100 | ILLUSTRATION XXX | | | |



per Pitcher
 Steamed Oysters 20¢ each
TURDAY
 Dinner Special
 Lasagne \$3.15

Deli Specials
 Ham 2.49 lb.
 One Cheese \$2.49



Richfood 1%
 Lowfat Milk
 1.59
 gallon jug

2/\$1.09
 Buns 8 ct. pkg.

DAY, NOVEMBER 9

Hooker Memorial Christian Church
 (Disciples of Christ)
 1111 Greenville Blvd. 756-2275

In essentials, *Unity*
 In non-essentials, *Freedom*
 In all things, *Love*

Special Classes For College Students
 9:45 a.m. Christian Education (all ages)
 11:00 a.m. Worship-Open Communion

Shop Nightly Till 9:00 The Plaza

Sturdy Cotton Duck
Flip Chairs
 \$100 Value **49.99**

High density foam covered with heavy cotton duck in assorted colors. Great for dorms, vacation homes, recreation rooms and more.

galleria
 Raleigh • Durham • Greensboro • Wilson • Greenville • Wilmington • Fayetteville

9:00 a.m. UNTIL 10:30 EAST BROOK RD. 758-7570

Scissorsmith
 Located Beside King & Queen

Hair Designs
 Complete Hair Care For Men & Women
 Specializing in Cutting Manicures & Eyebrow Waxing
 We Use Nexus Products

One Free Visit to the Tanning Booth With This Ad and A Haircut

Welcome All ECU Students!

STUDENT TEACHING - FEBRUARY 23 - MAY 2, 1986

| COURSE | SECT | COURSE DESCRIPTION | DAYS | TIME | CRSE |
|--------|------|---------------------|------|------|------|
| 1100 | 1100 | ILLUSTRATION I | | | |
| 1100 | 1100 | ILLUSTRATION II | | | |
| 1100 | 1100 | ILLUSTRATION III | | | |
| 1100 | 1100 | ILLUSTRATION IV | | | |
| 1100 | 1100 | ILLUSTRATION V | | | |
| 1100 | 1100 | ILLUSTRATION VI | | | |
| 1100 | 1100 | ILLUSTRATION VII | | | |
| 1100 | 1100 | ILLUSTRATION VIII | | | |
| 1100 | 1100 | ILLUSTRATION IX | | | |
| 1100 | 1100 | ILLUSTRATION X | | | |
| 1100 | 1100 | ILLUSTRATION XI | | | |
| 1100 | 1100 | ILLUSTRATION XII | | | |
| 1100 | 1100 | ILLUSTRATION XIII | | | |
| 1100 | 1100 | ILLUSTRATION XIV | | | |
| 1100 | 1100 | ILLUSTRATION XV | | | |
| 1100 | 1100 | ILLUSTRATION XVI | | | |
| 1100 | 1100 | ILLUSTRATION XVII | | | |
| 1100 | 1100 | ILLUSTRATION XVIII | | | |
| 1100 | 1100 | ILLUSTRATION XIX | | | |
| 1100 | 1100 | ILLUSTRATION XX | | | |
| 1100 | 1100 | ILLUSTRATION XXI | | | |
| 1100 | 1100 | ILLUSTRATION XXII | | | |
| 1100 | 1100 | ILLUSTRATION XXIII | | | |
| 1100 | 1100 | ILLUSTRATION XXIV | | | |
| 1100 | 1100 | ILLUSTRATION XXV | | | |
| 1100 | 1100 | ILLUSTRATION XXVI | | | |
| 1100 | 1100 | ILLUSTRATION XXVII | | | |
| 1100 | 1100 | ILLUSTRATION XXVIII | | | |
| 1100 | 1100 | ILLUSTRATION XXIX | | | |
| 1100 | 1100 | ILLUSTRATION XXX | | | |



GORDON'S GOLF & SKI SHOP
 264 By Pass (Beside G'ville TV & Appliance)

| Boots | SKIS |
|-----------------|-------------------|
| NORDICA 10% off | K2 10% off |
| SALOMAN 10% off | OLIN 10% off |
| LANGE 40% off | DYNASTAR 10% off |
| CABER 50% off | ROSSIGNOL 20% off |
| HANSON 80% off | HART 30% off |

(while they last)

SKY EQUIPMENT PACKAGES AVAILABLE IN ALL ABILITY RANGES

ALL SKI CLOTHING 20% - 50% OFF
 C.B. Jackets 35% off
 Men & Womens Skyr T-Necks NOW \$16.95 (reg. \$19.00)

*Special group of skis at BIG DISCOUNT

Where personal service is our speciality

KENTUCKY NUGGETS TASTE BETTER

In a recent survey, people who said they'd ever tried both McDonald's chicken nuggets and our Kentucky Nuggets, rated Kentucky Nuggets higher on taste. Kentucky Nuggets have our secret blend of 11 herbs and spices, so they taste great. Come in and try some chicken nuggets from the chicken experts.

WE BEAT McNUGGETS ON TASTE*

We Do Chicken Right.

| | | | |
|--|--|--|--|
| 6 Kentucky Nuggets This coupon good for 6 Kentucky Nuggets* and your choice of sauce. Limit one per customer. Customer pays all applicable sales tax. Offer Expires 12-31-85 .99¢ | 9 Kentucky Nuggets This coupon good for 9 Kentucky Nuggets* and your choice of sauce. Limit one per customer. Customer pays all applicable sales tax. Offer Expires 12-31-85 \$1.59 | 20 Kentucky Nuggets This coupon good for 20 Kentucky Nuggets* and your choice of sauce. Limit one per customer. Customer pays all applicable sales tax. Offer Expires 12-31-85 \$3.59 | Kentucky Nuggets Combo This coupon good for Six Kentucky Nuggets, Individual order of Kentucky Fried Large Soft Drink. Limit one coupon per customer. Customer pays all applicable sales tax. Offer Expires 12-31-85 \$1.99 |
|--|--|--|--|

Redeemable at the following locations:
 Greenville (2 locations) • 5th St. and Greenville Blvd. • 752-5184 • 756-6434
 • Kinston Wilson Goldsboro • Tarboro Williamston and • 2 locations in Jacksonville

BARNES CHARGE-VISA-AMERICAN EXPRESS
† Barnes *Jewelers*
 And Diamond Gallery

Spectacular
 Sale of Fine Jewelry

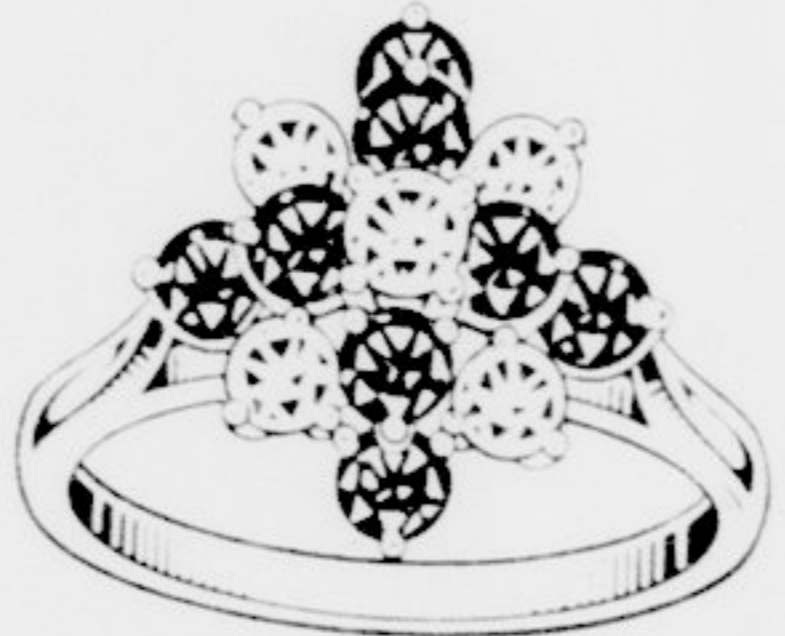
Our Variety Of Rings Including Men's, Ladies,
 Will Please Someone You Know!



LADIES DIAMOND TIFFANY
 SALE PRICE **\$499⁰⁰**
 25 Carats
 14 Karat Yellow Or White Gold 4 Or 6 Prongs

LADIES DIAMONDS
 Complemented With Genuine Rubies Mounted In
 14 Karat Yellow Gold Total Weight Of 1.20
 Cts.

SALE PRICE **\$750⁰⁰**



LADIES DIAMOND PENDANT AND PENDANT INSERT PENDANT
 25 Cts. And Diamond Insert 25 Cts. Complemented With A 14 Karat Yellow Or White Gold Chain.
 SALE PRICE **\$799⁰⁰**

LADIES MODERN DIAMOND BRIDAL SET
 65 Cts. Diamond Weight Mounted In 14 Karat Yellow Gold.

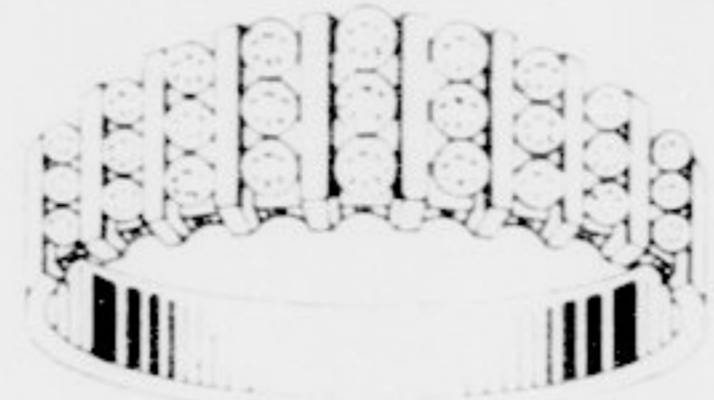
SALE PRICE **\$1525⁰⁰**



GENTS 3 DIAMOND RING
 With Total Weight Being 1.90 Cts. Mounted In 14 Karat Yellow Or White Gold.
 SALE PRICE **\$1550⁰⁰**

LADIES DIAMOND RING
 Insert Or Guard Total Weight 30 Karats Mounted In 14 Karat Yellow Or White Gold.

Price **\$550⁰⁰**



LADIES DIAMOND RING
 Anniversary Band With 27 Diamonds With A Total Weight Of 1.20 Mounted In 14 Karat Yellow Gold.
 SALE PRICE **\$1895⁰⁰**

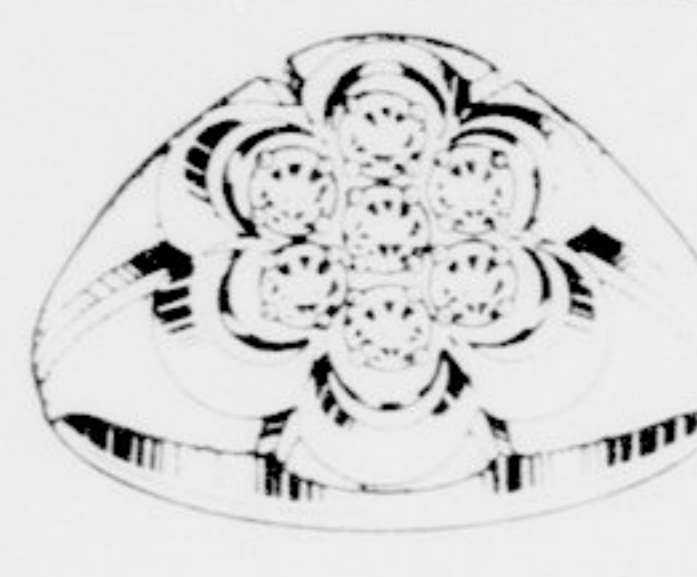
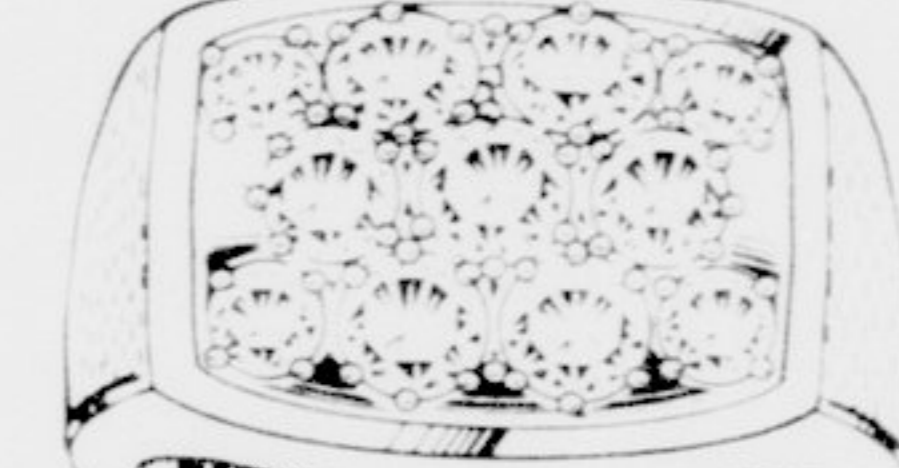
LADIES DIAMOND PENDANT TIFFANY
 Mounted In 14 Karat White Or Yellow Gold Complemented With 18 Inch 14 Karat Rope Chain 20 Ct.

SALE PRICE **\$299⁰⁰**



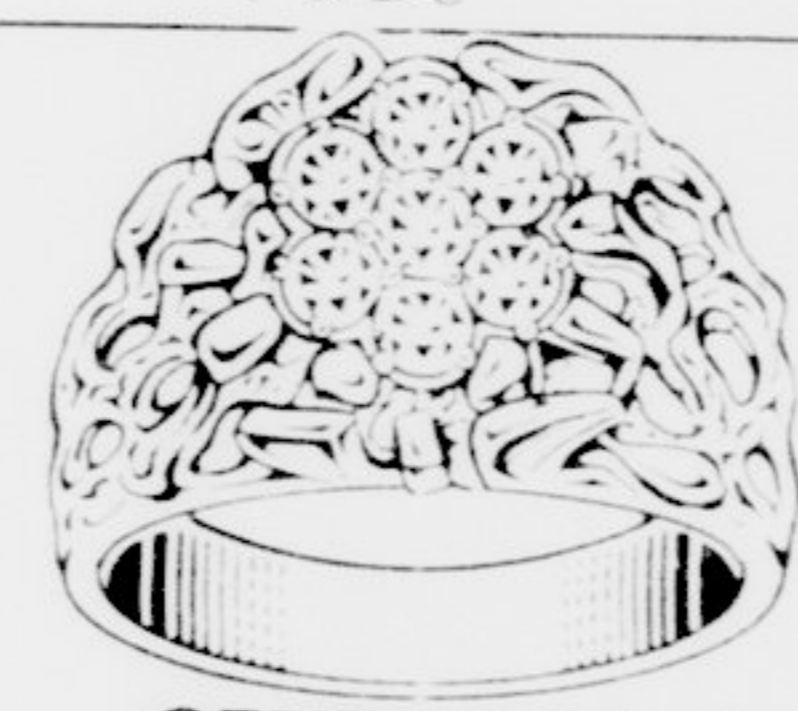
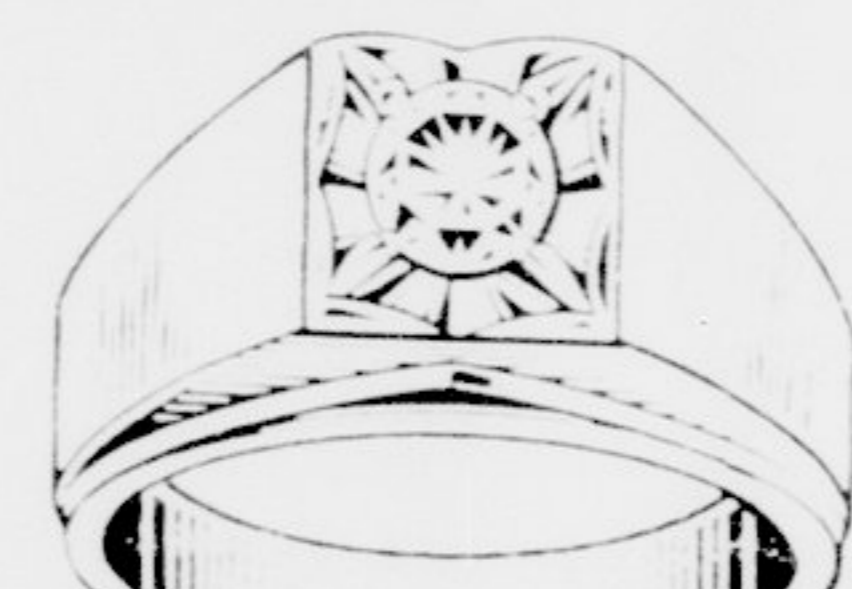
LADIES DIAMOND COCKTAIL RING
 With A Total Weight Of 1.50 Mounted In 14 Karat Yellow Gold.
 SALE PRICE **\$1950⁰⁰**

GENTS 3.00 CTS. DIAMOND RING
 Mounted In 14 Karat Yellow Gold.
 SALE PRICE **\$4900⁰⁰**



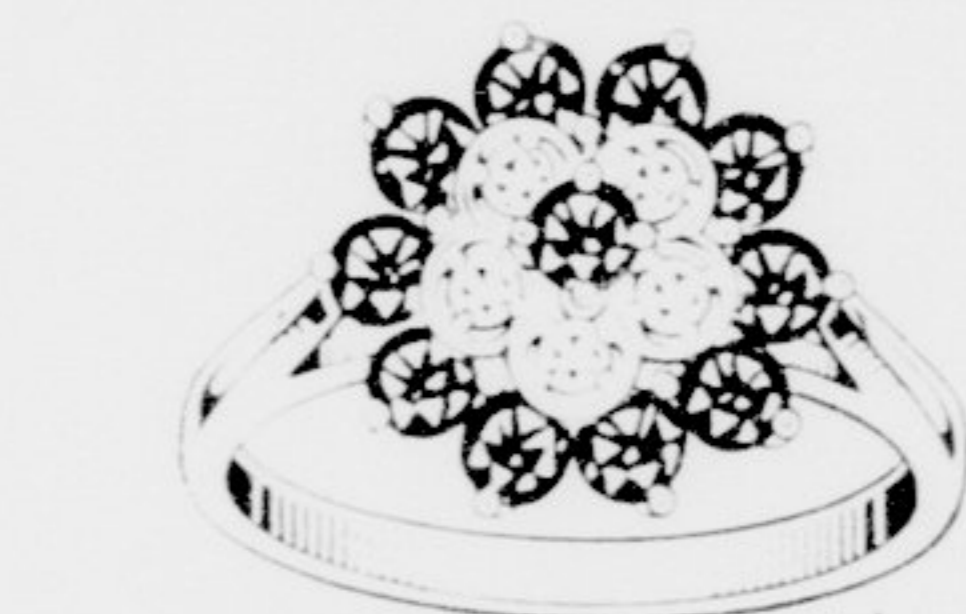
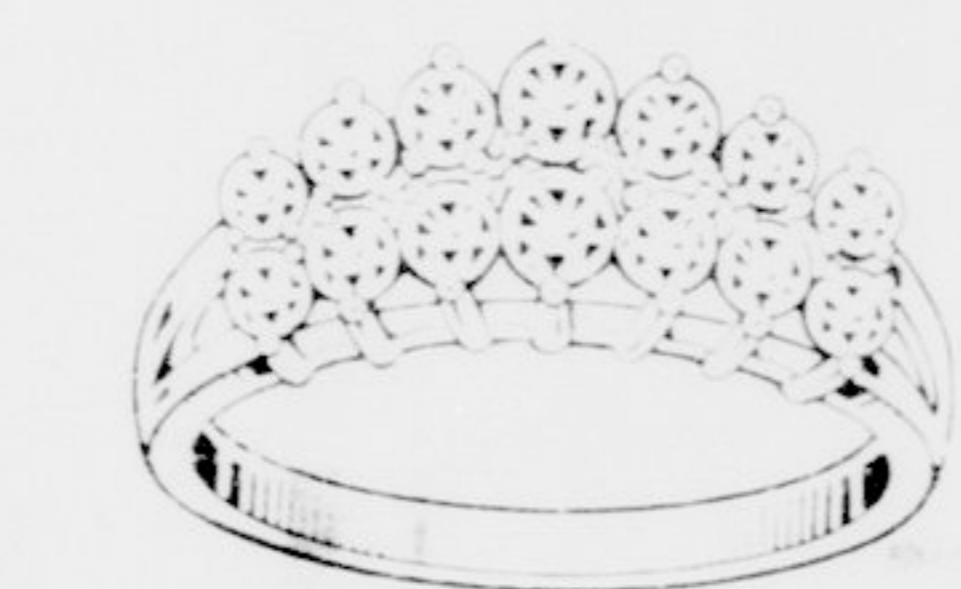
GENTS 1.00 CTS. DIAMOND SOLITAIRE
 Mounted In 14 Karat White Or Yellow Gold.
 SALE PRICE **\$3900⁰⁰**

GENTS .25 DIAMOND CLUSTER
 Mounted In 14 Karat Yellow Gold.
 Price **\$399⁰⁰**



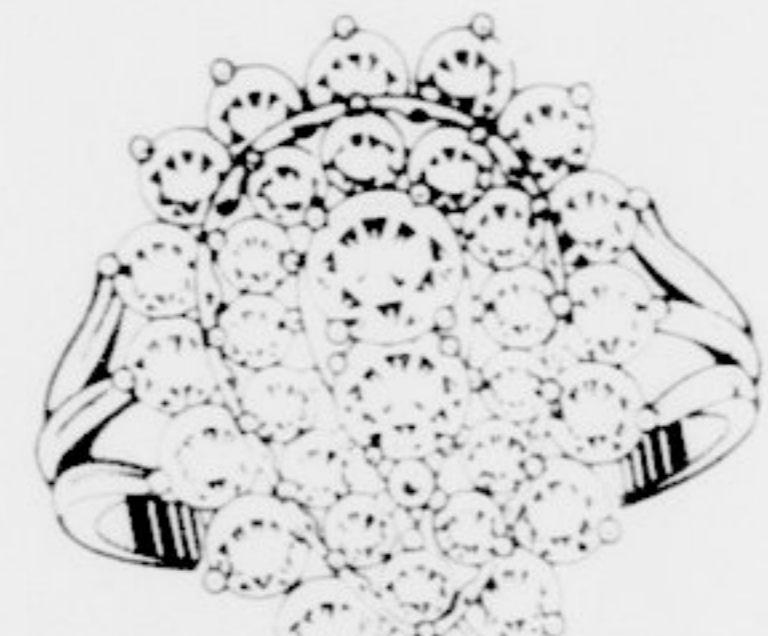
GENTS 1.00 CT. DIAMOND CLUSTER NUGGET RING
 Mounted In 14 Karat Yellow Gold. A Very Masculine Ring.
 SALE PRICE **\$1299⁰⁰**

LADIES 1.00 CT. DIAMOND ANNIVERSARY BAND
 Mounted In 14 Karat White Gold. Double Row Design.
 SALE PRICE **\$780⁰⁰**



LADIES DIAMOND AND RUBY RING
 Mounted In 14 Karat Yellow Gold. With A Total Gem Weight Of 3.00 Cts.
 SALE PRICE **\$999⁰⁰**

LADIES DIAMOND RING
 Surrounded By Genuine Rubies. Total Weight 1.35 Total Gem Weight Mounted In 14 Karat Yellow Gold.
 Price **\$650⁰⁰**

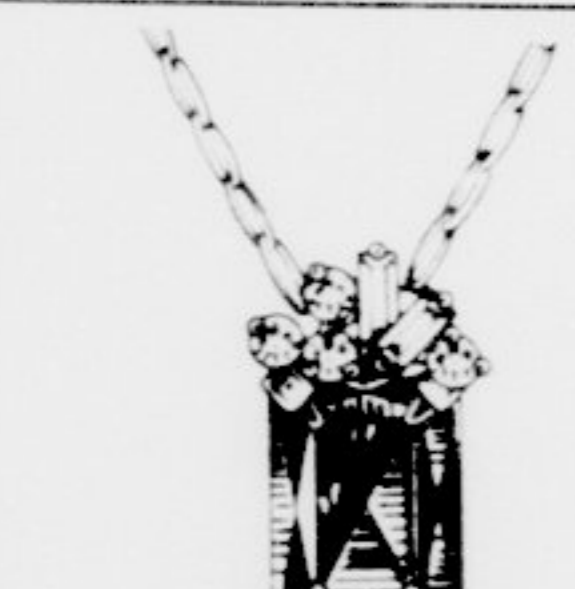


LADIES DIAMOND ANNIVERSARY BAND
 Mounted In 14 Karat Yellow Gold With A Total Weight Of 35 Cts.
 SALE PRICE **\$480⁰⁰**



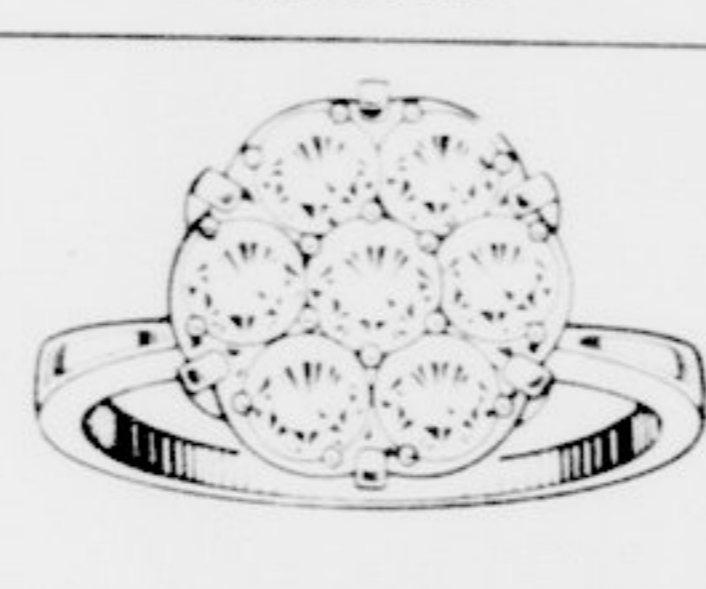
LADIES DIAMOND COCKTAIL RING
 Mounted In 14 Karat Yellow Gold With A Total Weight Of 50 Cts.
 SALE PRICE **\$750⁰⁰**

LADIES DIAMOND AND SAPPHIRE RING
 Mounted In 14 Karat Yellow Gold With Total Weight Of 1.15.
 SALE PRICE **\$1855⁰⁰**



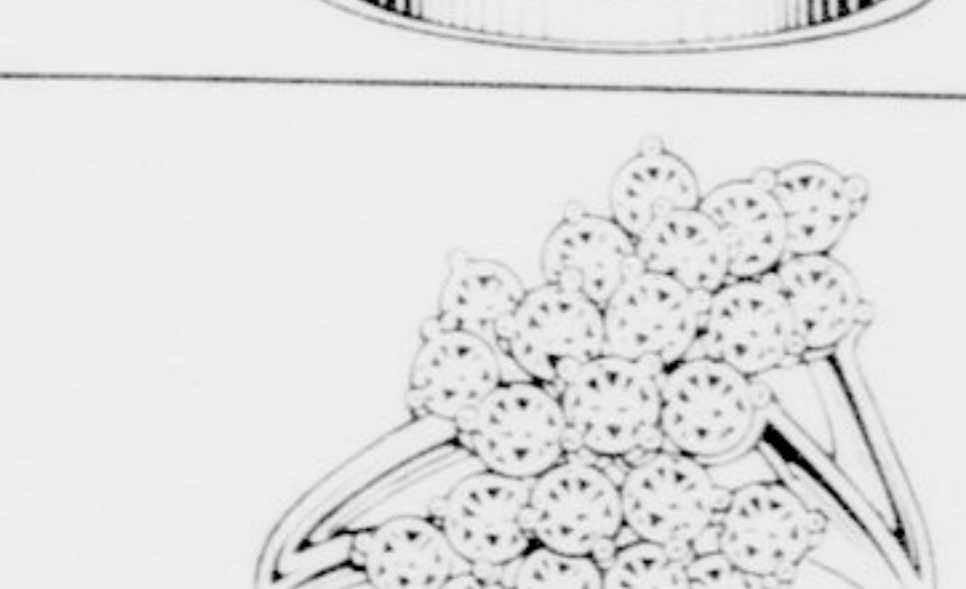
LADIES GENUINE GARNET PENDANT
 Complemented With Diamonds On An 18 Inch 14K Rope Chain.
 SALE PRICE **\$325⁰⁰**

GENTS DIAMOND CLUSTER RING
 Mounted In 14 Karat Yellow Or White Gold With Solid Back 1.00 Total Diamond Weight.
 SALE PRICE **\$1399⁰⁰**



LADIES DIAMOND CLUSTER RING
 Mounted In 14 Karat Yellow Or White Gold Total Weight Of 50 Cts.
 SALE PRICE **\$399⁰⁰**

LADIES DIAMOND WATERFALL
 Mounted In 14 Karat Yellow Or White Gold Total Weight Of 1.30 Cts.
 SALE PRICE **\$750⁰⁰**



LADIES DIAMOND COCKTAIL RING
 Mounted In 14 Karat White Gold With A Total Weight Of 4.00 Cts.
 SALE PRICE **\$4250⁰⁰**

SPECIAL
 14 Kt Gold Pierced EARRINGS
50% off
SPECIAL
EAR PIERCING \$2⁹⁹
 INCLUDING EARRINGS

All 14 KT. GOLD CHAINS
50% Off



On the premises appraisals by a certified G.I.A. graduate. On the premises repairs, ring sizing, stone setting, remounting, chain repairs, watch repairs, engraving, ear piercing.

BARNES CHARGE-VISA-AMERICAN EXPRESS
† Barnes *Jewelers*
 And Diamond Gallery
 Hours 10-9 Mon.-Sat. Closed Sunday
GREENVILLE THE PLAZA 756-6696 **KINSTON & JACKSONVILLE**

Charge accounts invited. Mastercard, Visa, American Express, Choice, Barnes convenient charge plan and layaway up to 24 months to pay.

Co

- Peppy 49cc engine gets over 100 mpg
- Smooth, quiet shaft drive — no chain to oil or adjust

STAN'S CYC
 801 DICKINSON AVENUE
 TEL 757-0592
 GREENVILLE, N.C. 27834

Let us entertain you

Come Join

SUNSHINE VIDEO
 756-43
 214 Arlington Blvd

Car Jewelry

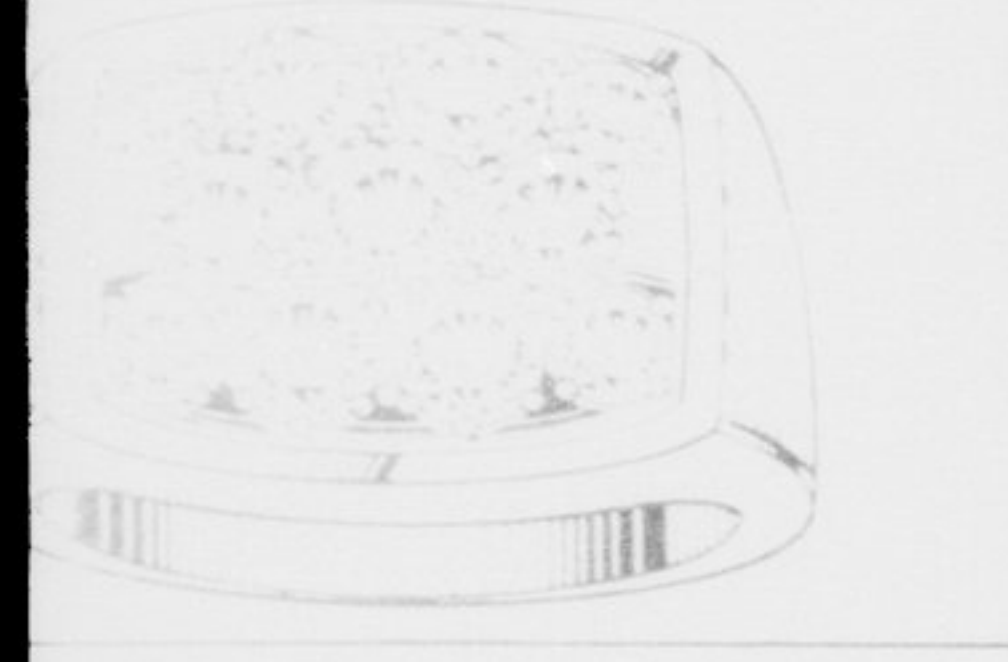


GENTS 3 DIAMOND RING

\$1550⁰⁰

GENTS 3.00 CTS. DIAMOND RING

\$4900⁰⁰



LADIES DIAMOND AND RUBY RING

\$999⁰⁰

LADIES DIAMOND AND SAPPHIRE RING

\$1855⁰⁰



LADIES DIAMOND COCKTAIL RING

\$4250⁰⁰



accounts invited, d. Visa, American Choice, Barnes charge plan and up to 24 months to

| | | | | | | | | | | | | | | | | | | | | | | | | | | | | | | | | | | | | | | | | | | | | | | | | | | | | | | | | | | | | | | | | | | | | | | | | | | | | | | | | | | | | | | | | | | | | | | | | | | | |
|------|------|------|------|------|------|------|------|------|------|------|------|------|------|------|------|------|------|------|------|------|------|------|------|------|------|------|------|------|------|------|------|------|------|------|------|------|------|------|------|------|------|------|------|------|------|------|------|------|------|------|------|------|------|------|------|------|------|------|------|------|------|------|------|------|------|------|------|------|------|------|------|------|------|------|------|------|------|------|------|------|------|------|------|------|------|------|------|------|------|------|------|------|------|------|------|------|------|------|------|
| 1001 | 1002 | 1003 | 1004 | 1005 | 1006 | 1007 | 1008 | 1009 | 1010 | 1011 | 1012 | 1013 | 1014 | 1015 | 1016 | 1017 | 1018 | 1019 | 1020 | 1021 | 1022 | 1023 | 1024 | 1025 | 1026 | 1027 | 1028 | 1029 | 1030 | 1031 | 1032 | 1033 | 1034 | 1035 | 1036 | 1037 | 1038 | 1039 | 1040 | 1041 | 1042 | 1043 | 1044 | 1045 | 1046 | 1047 | 1048 | 1049 | 1050 | 1051 | 1052 | 1053 | 1054 | 1055 | 1056 | 1057 | 1058 | 1059 | 1060 | 1061 | 1062 | 1063 | 1064 | 1065 | 1066 | 1067 | 1068 | 1069 | 1070 | 1071 | 1072 | 1073 | 1074 | 1075 | 1076 | 1077 | 1078 | 1079 | 1080 | 1081 | 1082 | 1083 | 1084 | 1085 | 1086 | 1087 | 1088 | 1089 | 1090 | 1091 | 1092 | 1093 | 1094 | 1095 | 1096 | 1097 | 1098 | 1099 | 1100 |
|------|------|------|------|------|------|------|------|------|------|------|------|------|------|------|------|------|------|------|------|------|------|------|------|------|------|------|------|------|------|------|------|------|------|------|------|------|------|------|------|------|------|------|------|------|------|------|------|------|------|------|------|------|------|------|------|------|------|------|------|------|------|------|------|------|------|------|------|------|------|------|------|------|------|------|------|------|------|------|------|------|------|------|------|------|------|------|------|------|------|------|------|------|------|------|------|------|------|------|------|

| | | | | | | | | | | | | | | | | | | | | | | | | | | | | | | | | | | | | | | | | | | | | | | | | | | | | | | | | | | | | | | | | | | | | | | | | | | | | | | | | | | | | | | | | | | | | | | | | | | | |
|------|------|------|------|------|------|------|------|------|------|------|------|------|------|------|------|------|------|------|------|------|------|------|------|------|------|------|------|------|------|------|------|------|------|------|------|------|------|------|------|------|------|------|------|------|------|------|------|------|------|------|------|------|------|------|------|------|------|------|------|------|------|------|------|------|------|------|------|------|------|------|------|------|------|------|------|------|------|------|------|------|------|------|------|------|------|------|------|------|------|------|------|------|------|------|------|------|------|------|------|
| 1101 | 1102 | 1103 | 1104 | 1105 | 1106 | 1107 | 1108 | 1109 | 1110 | 1111 | 1112 | 1113 | 1114 | 1115 | 1116 | 1117 | 1118 | 1119 | 1120 | 1121 | 1122 | 1123 | 1124 | 1125 | 1126 | 1127 | 1128 | 1129 | 1130 | 1131 | 1132 | 1133 | 1134 | 1135 | 1136 | 1137 | 1138 | 1139 | 1140 | 1141 | 1142 | 1143 | 1144 | 1145 | 1146 | 1147 | 1148 | 1149 | 1150 | 1151 | 1152 | 1153 | 1154 | 1155 | 1156 | 1157 | 1158 | 1159 | 1160 | 1161 | 1162 | 1163 | 1164 | 1165 | 1166 | 1167 | 1168 | 1169 | 1170 | 1171 | 1172 | 1173 | 1174 | 1175 | 1176 | 1177 | 1178 | 1179 | 1180 | 1181 | 1182 | 1183 | 1184 | 1185 | 1186 | 1187 | 1188 | 1189 | 1190 | 1191 | 1192 | 1193 | 1194 | 1195 | 1196 | 1197 | 1198 | 1199 | 1200 |
|------|------|------|------|------|------|------|------|------|------|------|------|------|------|------|------|------|------|------|------|------|------|------|------|------|------|------|------|------|------|------|------|------|------|------|------|------|------|------|------|------|------|------|------|------|------|------|------|------|------|------|------|------|------|------|------|------|------|------|------|------|------|------|------|------|------|------|------|------|------|------|------|------|------|------|------|------|------|------|------|------|------|------|------|------|------|------|------|------|------|------|------|------|------|------|------|------|------|------|------|

| | | | | | | | | | | | | | | | | | | | | | | | | | | | | | | | | | | | | | | | | | | | | | | | | | | | | | | | | | | | | | | | | | | | | | | | | | | | | | | | | | | | | | | | | | | | | | | | | | | | |
|------|------|------|------|------|------|------|------|------|------|------|------|------|------|------|------|------|------|------|------|------|------|------|------|------|------|------|------|------|------|------|------|------|------|------|------|------|------|------|------|------|------|------|------|------|------|------|------|------|------|------|------|------|------|------|------|------|------|------|------|------|------|------|------|------|------|------|------|------|------|------|------|------|------|------|------|------|------|------|------|------|------|------|------|------|------|------|------|------|------|------|------|------|------|------|------|------|------|------|------|
| 1201 | 1202 | 1203 | 1204 | 1205 | 1206 | 1207 | 1208 | 1209 | 1210 | 1211 | 1212 | 1213 | 1214 | 1215 | 1216 | 1217 | 1218 | 1219 | 1220 | 1221 | 1222 | 1223 | 1224 | 1225 | 1226 | 1227 | 1228 | 1229 | 1230 | 1231 | 1232 | 1233 | 1234 | 1235 | 1236 | 1237 | 1238 | 1239 | 1240 | 1241 | 1242 | 1243 | 1244 | 1245 | 1246 | 1247 | 1248 | 1249 | 1250 | 1251 | 1252 | 1253 | 1254 | 1255 | 1256 | 1257 | 1258 | 1259 | 1260 | 1261 | 1262 | 1263 | 1264 | 1265 | 1266 | 1267 | 1268 | 1269 | 1270 | 1271 | 1272 | 1273 | 1274 | 1275 | 1276 | 1277 | 1278 | 1279 | 1280 | 1281 | 1282 | 1283 | 1284 | 1285 | 1286 | 1287 | 1288 | 1289 | 1290 | 1291 | 1292 | 1293 | 1294 | 1295 | 1296 | 1297 | 1298 | 1299 | 1300 |
|------|------|------|------|------|------|------|------|------|------|------|------|------|------|------|------|------|------|------|------|------|------|------|------|------|------|------|------|------|------|------|------|------|------|------|------|------|------|------|------|------|------|------|------|------|------|------|------|------|------|------|------|------|------|------|------|------|------|------|------|------|------|------|------|------|------|------|------|------|------|------|------|------|------|------|------|------|------|------|------|------|------|------|------|------|------|------|------|------|------|------|------|------|------|------|------|------|------|------|------|

*PLUS 1 ADDITIONAL HOUR THRU...
 *PLUS 1 ADDITIONAL HOUR THRU...
 *PLUS 1 ADDITIONAL HOUR THRU...

CRUISE THE BAHAMAS DURING SPRING BREAK FOR ONLY \$313.75
 MARCH 7-10 or MARCH 13-16
 * Cruise from Ft. Lauderdale or Miami
 * Includes all meals, entertainment, taxes and gratuities
 * Based on quad occupancy
 * Limited number of cabins
CALL TRAVEL EXPRESS TODAY 752-16 63

East Carolina Coins & Pawn
 10th & Dickinson Ave.
WE BUY GOLD & SILVER INSTANT CASH LOANS
 All Transactions Confidential
BUY—SALE—TRADE
 752-0322
 Hours: 9:00 am-6:00 pm Mon.-Sat.
 Stereo Televisions, Cassettes Tapes, Musical Inst., 35mm Cameras, Bicycles

california concept
 "HAIR DESIGN CENTER"
 Welcome All ECU Students!
 AFFORDABLE PRICES
752-2967
 1100 CHARLES BLVD. GREENVILLE
 "The Cut Is The Style"

Commuter scooter

 QT50 \$599 plus tax
 • Peppy 49cc engine gets over 100 mpg
 • Smooth, quiet shaft drive — no chain to oil or adjust
 • Autolube mixes oil and gas automatically
 • Simple kick starting
 • Full street-legal instrumentation and lighting
STAN'S CYCLE CENTER
 801 DICKINSON AVENUE TEL 757-0592 GREENVILLE, N.C. 27834
YAMAHA
 Built for the fun of it.

Let us entertain you ...
Come Join The Club!

 1000's Of Movies For Sale Or Rent
 VHS & BETA FORMATS
SUNSHINE VIDEO, INC.
 756-4392
 214 Arlington Blvd. Greenville

WANTED by Student Stores
USED BOOKS
 Description: Comes in all sizes and colors. Some are expensive, some are light, some are heavy. Some used books are paperback, many are hardcover.
 Last Seen: In students' rooms, cars, lockers, closets.
 \$REWARDS: Cash!!! Amount depends on new retail price and if book will be needed for resale for spring semester. Up to 1/2 the new retail price in many cases.
 These fugitives from the retail book market should be considered valuable and proper care should be taken when taking them into custody.
STUDENT STORES Wright Building
 Owned and Operated by East Carolina University

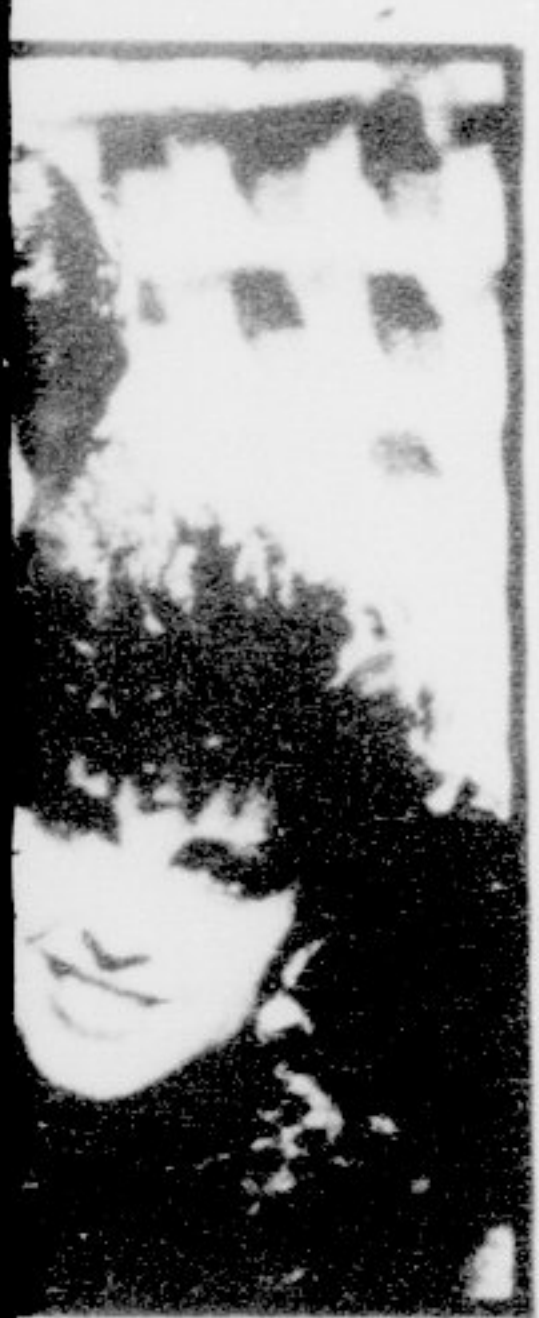
| DEPT. | COURSE | CREDIT | PREREQ. | SEMESTER | STATUS |
|-----------|----------|--------|---------|----------|---------|
| EDUCATION | EDUC 101 | 3 | | FALL | REGULAR |
| EDUCATION | EDUC 102 | 3 | | FALL | REGULAR |
| EDUCATION | EDUC 103 | 3 | | FALL | REGULAR |
| EDUCATION | EDUC 104 | 3 | | FALL | REGULAR |
| EDUCATION | EDUC 105 | 3 | | FALL | REGULAR |
| EDUCATION | EDUC 106 | 3 | | FALL | REGULAR |
| EDUCATION | EDUC 107 | 3 | | FALL | REGULAR |
| EDUCATION | EDUC 108 | 3 | | FALL | REGULAR |
| EDUCATION | EDUC 109 | 3 | | FALL | REGULAR |
| EDUCATION | EDUC 110 | 3 | | FALL | REGULAR |
| EDUCATION | EDUC 111 | 3 | | FALL | REGULAR |
| EDUCATION | EDUC 112 | 3 | | FALL | REGULAR |
| EDUCATION | EDUC 113 | 3 | | FALL | REGULAR |
| EDUCATION | EDUC 114 | 3 | | FALL | REGULAR |
| EDUCATION | EDUC 115 | 3 | | FALL | REGULAR |
| EDUCATION | EDUC 116 | 3 | | FALL | REGULAR |
| EDUCATION | EDUC 117 | 3 | | FALL | REGULAR |
| EDUCATION | EDUC 118 | 3 | | FALL | REGULAR |
| EDUCATION | EDUC 119 | 3 | | FALL | REGULAR |
| EDUCATION | EDUC 120 | 3 | | FALL | REGULAR |
| EDUCATION | EDUC 121 | 3 | | FALL | REGULAR |
| EDUCATION | EDUC 122 | 3 | | FALL | REGULAR |
| EDUCATION | EDUC 123 | 3 | | FALL | REGULAR |
| EDUCATION | EDUC 124 | 3 | | FALL | REGULAR |
| EDUCATION | EDUC 125 | 3 | | FALL | REGULAR |
| EDUCATION | EDUC 126 | 3 | | FALL | REGULAR |
| EDUCATION | EDUC 127 | 3 | | FALL | REGULAR |
| EDUCATION | EDUC 128 | 3 | | FALL | REGULAR |
| EDUCATION | EDUC 129 | 3 | | FALL | REGULAR |
| EDUCATION | EDUC 130 | 3 | | FALL | REGULAR |
| EDUCATION | EDUC 131 | 3 | | FALL | REGULAR |
| EDUCATION | EDUC 132 | 3 | | FALL | REGULAR |
| EDUCATION | EDUC 133 | 3 | | FALL | REGULAR |
| EDUCATION | EDUC 134 | 3 | | FALL | REGULAR |
| EDUCATION | EDUC 135 | 3 | | FALL | REGULAR |
| EDUCATION | EDUC 136 | 3 | | FALL | REGULAR |
| EDUCATION | EDUC 137 | 3 | | FALL | REGULAR |
| EDUCATION | EDUC 138 | 3 | | FALL | REGULAR |
| EDUCATION | EDUC 139 | 3 | | FALL | REGULAR |
| EDUCATION | EDUC 140 | 3 | | FALL | REGULAR |
| EDUCATION | EDUC 141 | 3 | | FALL | REGULAR |
| EDUCATION | EDUC 142 | 3 | | FALL | REGULAR |
| EDUCATION | EDUC 143 | 3 | | FALL | REGULAR |
| EDUCATION | EDUC 144 | 3 | | FALL | REGULAR |
| EDUCATION | EDUC 145 | 3 | | FALL | REGULAR |
| EDUCATION | EDUC 146 | 3 | | FALL | REGULAR |
| EDUCATION | EDUC 147 | 3 | | FALL | REGULAR |
| EDUCATION | EDUC 148 | 3 | | FALL | REGULAR |
| EDUCATION | EDUC 149 | 3 | | FALL | REGULAR |
| EDUCATION | EDUC 150 | 3 | | FALL | REGULAR |
| EDUCATION | EDUC 151 | 3 | | FALL | REGULAR |
| EDUCATION | EDUC 152 | 3 | | FALL | REGULAR |
| EDUCATION | EDUC 153 | 3 | | FALL | REGULAR |
| EDUCATION | EDUC 154 | 3 | | FALL | REGULAR |
| EDUCATION | EDUC 155 | 3 | | FALL | REGULAR |
| EDUCATION | EDUC 156 | 3 | | FALL | REGULAR |
| EDUCATION | EDUC 157 | 3 | | FALL | REGULAR |
| EDUCATION | EDUC 158 | 3 | | FALL | REGULAR |
| EDUCATION | EDUC 159 | 3 | | FALL | REGULAR |
| EDUCATION | EDUC 160 | 3 | | FALL | REGULAR |
| EDUCATION | EDUC 161 | 3 | | FALL | REGULAR |
| EDUCATION | EDUC 162 | 3 | | FALL | REGULAR |
| EDUCATION | EDUC 163 | 3 | | FALL | REGULAR |
| EDUCATION | EDUC 164 | 3 | | FALL | REGULAR |
| EDUCATION | EDUC 165 | 3 | | FALL | REGULAR |
| EDUCATION | EDUC 166 | 3 | | FALL | REGULAR |
| EDUCATION | EDUC 167 | 3 | | FALL | REGULAR |
| EDUCATION | EDUC 168 | 3 | | FALL | REGULAR |
| EDUCATION | EDUC 169 | 3 | | FALL | REGULAR |
| EDUCATION | EDUC 170 | 3 | | FALL | REGULAR |
| EDUCATION | EDUC 171 | 3 | | FALL | REGULAR |
| EDUCATION | EDUC 172 | 3 | | FALL | REGULAR |
| EDUCATION | EDUC 173 | 3 | | FALL | REGULAR |
| EDUCATION | EDUC 174 | 3 | | FALL | REGULAR |
| EDUCATION | EDUC 175 | 3 | | FALL | REGULAR |
| EDUCATION | EDUC 176 | 3 | | FALL | REGULAR |
| EDUCATION | EDUC 177 | 3 | | FALL | REGULAR |
| EDUCATION | EDUC 178 | 3 | | FALL | REGULAR |
| EDUCATION | EDUC 179 | 3 | | FALL | REGULAR |
| EDUCATION | EDUC 180 | 3 | | FALL | REGULAR |
| EDUCATION | EDUC 181 | 3 | | FALL | REGULAR |
| EDUCATION | EDUC 182 | 3 | | FALL | REGULAR |
| EDUCATION | EDUC 183 | 3 | | FALL | REGULAR |
| EDUCATION | EDUC 184 | 3 | | FALL | REGULAR |
| EDUCATION | EDUC 185 | 3 | | FALL | REGULAR |
| EDUCATION | EDUC 186 | 3 | | FALL | REGULAR |
| EDUCATION | EDUC 187 | 3 | | FALL | REGULAR |
| EDUCATION | EDUC 188 | 3 | | FALL | REGULAR |
| EDUCATION | EDUC 189 | 3 | | FALL | REGULAR |
| EDUCATION | EDUC 190 | 3 | | FALL | REGULAR |
| EDUCATION | EDUC 191 | 3 | | FALL | REGULAR |
| EDUCATION | EDUC 192 | 3 | | FALL | REGULAR |
| EDUCATION | EDUC 193 | 3 | | FALL | REGULAR |
| EDUCATION | EDUC 194 | 3 | | FALL | REGULAR |
| EDUCATION | EDUC 195 | 3 | | FALL | REGULAR |
| EDUCATION | EDUC 196 | 3 | | FALL | REGULAR |
| EDUCATION | EDUC 197 | 3 | | FALL | REGULAR |
| EDUCATION | EDUC 198 | 3 | | FALL | REGULAR |
| EDUCATION | EDUC 199 | 3 | | FALL | REGULAR |
| EDUCATION | EDUC 200 | 3 | | FALL | REGULAR |

THANKS * * * * *

WANT
would like to
contribution to the
ants who
our 1986 Spring
n Issue.
our readers
businesses that
Carolina University.
Semester!

**arges
signers**

enone Hairstyling
consultation



see the latest
Fashion
and the
Taming System
until 9 p.m.
756-6200

**0 OFF
RVICES!**



**FIND US BEHIND
QUINCY'S**
Phone: 355-29 46

**NOW AVAILABLE IN
PAPERBACK**

- World-Wide Concert Book
- LIVE AID**
- STEPHEN KING — Peter Straub

Tailsman
available at
Central Book & News
Greenville Square Shopping Center

Open 7 days a week 9:30-9:30

**PET
VILLAGE**

Good Selection of Reptiles
and Saltwater and Freshwater Fish

**We Carry A Complete Line
of Dog, Cat, and Fish Supplies**

Master Card and Visa are accepted and financing is
available.

511 EVANS ST.
GREENVILLE, N.C. 27834
PHONE 756-9222

**DONNA EDWARDS
Owner**

**CHRISTMAS BREAK
IS UPON US!**

Gift Ideas Abound
PANTANA BOB'S
has the answer
to your
Christmas
Shopping
dilemma...

- **SHIRTS**
(Long Sleeve and Short)
- **T-SHIRTS**
- **HATS**
- **SWEATSHIRTS**
(Available Soon)

All items available at **Marsh's**
SURF N SEA
200 E. Fifth Street

From The Staff of Pantana Bob's

Get Pantanasized

Buy Shirts Now for All
Members of the Family
and Don't Forget
Your Friends!

Pantana Bob's is a Private Club for Members and their Invited Guests.



**Come
Celebrate
This Semester's
Great Grades
at the
CROW'S NEST**

The Crow's Nest has created a new,
improved atmosphere for your din-
ing pleasure!

Complete Breakfast, Lunch,
and Dinner Meals
24 Hours A Day

**Great Food
Reasonable Prices**

Enjoy the Game Room and
Large Screen T.V.

Corner of 10th and Charles Blvd.
Phone 758-2446

(Now Available — Backgammon, Checkers,
Chess and Chinese Checkers)

We reserve the right to limit quantities.

EXTRA LOW PRICES

Prices in this ad good thru Sunday, November 10, 1985.

Win Up To **\$1,000.00** Pick Up A Bumper Sticker At Any Food Lion Store And Register To Win.

GROUND BEEF

Fresh Daily

78¢ Lb.

5 Lb. Pack Or More



MIXED FRYER PARTS OR LEG QUARTERS

Holly Farms Grade A **39¢** Lb.

New Crop Florida **99¢** Oranges 4 Lb. Bag

Fresh U.S. No. 1 White **\$1.29** Potatoes 20 Lb. Bag

BANANAS

Golden Ripe

5 Lbs. /

\$1



NATURAL LIGHT

\$4.79

12 pack - 12 oz. cans

OLD MILWAUKEE

\$2.29

6 pack - 12 oz. cans

Food Lion Macaroni & Cheese

7.25 oz.

4/1.00

PEPSI, DIET PEPSI, PEPSI FREE, DIET PEPSI-FREE,

\$1.15

2 liter

GWALTNEY BACON

\$1.29 Lb.

PORK LOINS

Fresh Cut Assorted Quarter

\$1.48 Lb.

FRESH COLLARDS

Green

39¢ Lb.

WESSON OIL

\$1.99

38 Oz.



MRS. FILBERT'S SPREAD

\$1.49

Family

3 Lb.

SCOTT TOWELS

\$1.99

3 Roll Pack

Aerobic SPEC

The holiday festivities Get Your Bo

Last Chance Holiday for the rest of

Look for upcoming ads for spring semester specials! **\$15**

417 Evans St. Dow



BUFFET

Mendenhall St

Monday-Friday

East Carolina Dir

| NO. | SECT | COURSE DESCRIPTION | CRS | TIME | CO-HIS |
|------|------|--------------------------|-----|----------------|--------|
| 1000 | WRTG | ADV. FICTION WRITING | 3 | TU 10:30-11:50 | C33 |
| 1001 | WRTG | ADVANCED FICTION WRITING | 3 | W 10:30-11:50 | C33 |
| 1002 | WRTG | ADV. WRITING | 3 | TH 10:30-11:50 | C33 |
| 1003 | WRTG | WRTG STUDIES SEM. I | 3 | F 10:30-11:50 | C33 |
| 1004 | WRTG | WRTG STUDIES SEM. II | 3 | S 10:30-11:50 | C33 |

| NO. | SECT | COURSE DESCRIPTION | CRS | TIME | CO-HIS |
|------|------|-----------------------|-----|----------------|--------|
| 1005 | WRTG | WRTG STUDIES SEM. III | 3 | SU 10:30-11:50 | C33 |
| 1006 | WRTG | WRTG STUDIES SEM. IV | 3 | M 10:30-11:50 | C33 |
| 1007 | WRTG | WRTG STUDIES SEM. V | 3 | TU 10:30-11:50 | C33 |

*BLOCK COURSE - MEETS JANUARY 15 - FEBRUARY 14, 1986
 *BLOCK COURSE - MEETS FEBRUARY 15 - MARCH 9, 1986

| NO. | SECT | COURSE DESCRIPTION | CRS | TIME | CO-HIS |
|------|------|------------------------|-----|----------------|--------|
| 1008 | WRTG | WRTG STUDIES SEM. VI | 3 | W 10:30-11:50 | C33 |
| 1009 | WRTG | WRTG STUDIES SEM. VII | 3 | TH 10:30-11:50 | C33 |
| 1010 | WRTG | WRTG STUDIES SEM. VIII | 3 | F 10:30-11:50 | C33 |


Aerobic Workshop SPECIAL

The holiday festivities are fast approaching
Get Your Body Ready!!
 Last Chance Holiday Shape-Up Special
 for the rest of the semester

Look for up-coming ads for spring semester specials! **\$15.00**

417 Evans St. Downtown 757-1608

You Could Be
Framed!



The eye site
 affordable fashion eyewear & contact lenses
 The Plaza Greenville, N.C. 756-9771

The Plaza Mall Hours 10-9 M-S
 E. Greenville Blvd. 355-5222

Style Shop

"For The Man Who Wants To Dress To Impress"

Get ready for those cold nights out. Come by the Style Shop and look at our leather coats, ski jackets and jean jackets. All brand names

**Cotler
 Rigolletto
 J. Park
 Ocean Pacific
 Heet
 Union Bay
 Lee**

10% off for all ECU students

Layaway now for Christmas

Go Pirates!



BUFFET DINING
 Mendenhall Student Union

Monday-Friday 11:00-2:00
 East Carolina Dining Services

SUB STATION II



"A Complete Meal On A Bun"

No. 1-19 Sandwiches include: lettuce, tomato, onion, oil, vinegar, oregano, salt and pepper
 Sandwiches also available on white, wheat, rye or pita bread.

OPEN 7 DAYS A WEEK
 ASK ABOUT OUR SUB CLUB & OUR 6 FT. PARTY SUB

DAILY & WEEKEND SPECIALS! **752-2183** SPECIALIZING IN LARGE BUSINESS ORDERS

215 E. 4th ST. CORNER OF 4th & READE Delivery Available GREENVILLE

| | |
|---|---|
| 10 Turkey and Cheese | 20 Pastrami on Rye and Cheese |
| 11 Tuna Fish and Cheese | 21 Ruben on Rye with Corned Beef |
| 12 All Cheese (Provolone, American and Swiss) | 22 Swiss Cheese, Mustard & Sauerkraut |
| 13 Salami, Cheese, Pepperoni and Ham | 23 Italian Meatball (in sauce) |
| 14 Roast Beef, Turkey and Cheese | 24 Italian Sausage with peppers (in sauce) |
| 15 Ham, Bologna and Cheese | 25 Cheese Steak |
| 16 Corned Beef and Cheese | 26 Cheese, Steak and Mushrooms |
| 17 Cappicola and Cheese | 27 Hot Dog |
| 18 Bologna, Ham, Cheese and Cappelicola | 28 Chef Sulu (lettuce, tomato, ham, turkey, cheese, peppers, pickles, egg crackers) |
| 19 SUPER SPECIAL: Salami, Bologna, Cheese, Turkey, Cappelicola, Ham and Pepperoni | 29 Italian Express (sausage and meatballs in sauce) |

SEE COUPON SECTION

COUPON: \$.50¢ off any lg. Sub, .25¢ off any sm. Sub. This coupon good with delivery

COUPON: \$1.00 Off SUPER SPECIAL no. 19. This coupon good with delivery

"Greenville's Finest Bakery for over 63 years"

DIENER'S BAKERY

752-5251 815 Dickinson Avenue DOWNTOWN

- ✓ Family Owned & Operated
- ✓ Within Walking distance from Girls' Dorm
- ✓ Baked Fresh Daily
- ✓ Pies: chocolate • lemon • apple • peach • French apple • sweet potatoe • lemon custard • blueberry • coconut custard • pecan
- ✓ Cakes: Carrot • spice • butternut • chocolate • caramel • pineapple • rum • banana • german chocolate
- ✓ Pastries: dough for chicken pastry • donuts • cream puffs • cookies • fudge • marzipan (seasonal) • cinnamon buns . . .
- ✓ Decorated cakes for all occasions.

Food Lion

SHIRTS

RDS

9

THE EAST CAROLINIAN...
 NOVEMBER 6, 1985...
 11...

OD

ailgate food

for \$250

752-0276

END

of The

ek Party

mission Friday
3:30 'til 7:30

\$50!

Paid Trip


esent To Win
ns 85c
DAY

ATTENTION ECU STUDENTS AND PROFESSORS


Remember — early reservations for holiday travel saves you money and time.

SPRING BREAK: Special student trips from \$375
Cruises, Mexico and Caribbean packages

Visit our downtown offices for brochures and professional handling of all your travel needs.



QUIXOTE TRAVELS, INC.
319 Cotanche Street
Greenville, N.C.
Phone 757-0234



CLIFF'S
Seafood House and Oyster Bar
Washington Highway (N.C. 33 Ext.) Greenville, North Carolina
Phone 752-3172
(Past Riverbluff Apts.)

| | |
|-----------------------|---------------|
| Flounder | \$3.25 |
| Popcorn Shrimp | \$3.25 |

Hours 4:30-9:30 Mon.-Sat.

— **NEWLY REMODELED** —

NEW & USED
Retaired Tires
\$7.00 & Up



SERVICE SPECIALS

— COUPON —
FILTER-LUBE
\$14.88

— COUPON —
4-Cylinder
\$29.95
6 and 8 cylinder
slightly higher

All size tires available.

CAR SHAKES? WE ELIMINATE \$14.88 For Alignment

Complete 5 Point Brake Safety \$5.50 Check
Includes readjusting and Fluid If Needed

OFFICIAL NORTH CAROLINA STATE INSPECTION STATION
WE SERVICE NATIONAL ACCOUNTS

BFGoodrich
TIRE CENTER

SATURDAY
7:00 A.M. - 1:00 P.M.
OPEN MON. - FRI.
8:00 A.M. - 5:30 P.M.

*“Consider us your car’s
Home Away From Home”*

Coggins Car Care
756-5244
320 West Greenville Blvd



FOSDICK'S
1890 SEAFOOD
2903 S. EVANS ST.
Dine In or Take Out
756-2011
Catering Services • Banquet Room Facilities

| | |
|--|--|
| <p>FREE Salad Bar with the purchase of any meal at FOSDICK'S 1890 SEAFOOD 2903 S. EVANS ST. 756-2011</p> | <p>FREE Cup of Clam Chowder with the purchase of any meal at FOSDICK'S 1890 SEAFOOD 2903 S. EVANS ST. 756-2011</p> |
| <p>\$1.00 OFF ANY MEAL At FOSDICK'S 1890 SEAFOOD 2903 S. EVANS ST. 756-2011</p> | <p>1/2 OFF ANY MEAL with the purchase of any meal of equal or greater value at FOSDICK'S 1890 SEAFOOD 2903 S. EVANS ST. 756-2011</p> |
| <p>10% Off Your Next Meal at FOSDICK'S 1890 SEAFOOD 2903 S. EVANS ST. 756-2011</p> | <p>10% Off Next Next Meal at FOSDICK'S 1890 SEAFOOD 2903 S. EVANS ST. 756-2011</p> |

CAROLINA EAST CENTER OFF HWY 11 NEAR PITT THEATRE

BEAU'S
NIGHTCLUB
756-6401

WED. NIGHTS:
Ladies' Zoo & Lockout!
25¢ wine & draft all nite long
Ladies only 8-10
Best in Dance Disco & Funk
Guys In at 10:00

THURS. NIGHTS: Learn how to shag nite!
Call 756-6401 for more info

FRI. NIGHTS:
WAM BAM END OF THEWEEK JAM!
Doors open 8:00
\$2.50 pitchers
\$1.00 tallboys
50¢ draft & wine
Best in Dance Disco & Funk

SAT. NIGHTS:
Featuring Steve Hardy, Charlie Byrd and Eddy Hemingway • Eastern N.C.'s best beach jocks.
Doors open 8:00
DADDY COOL pumps the Jams
On Wed. & Fri. Nights
Come on out and party with style at ECU's entertainment hotspot!!!!
It's BEAU'S, of course
BEAU'S, a private club for members and guests. All ABC permits

Call 756 6401 for specials

...MEN ...IN ...SOCIETY ...
...HEALTH ...STATISTICS ...
...INDUSTRIAL ...TECHNOLOGY ...
...TECHNOLOGY ...
...TECHNOLOGY ...

...TECHNOLOGY ...
...TECHNOLOGY ...
...TECHNOLOGY ...
...TECHNOLOGY ...
...TECHNOLOGY ...

...TECHNOLOGY ...
...TECHNOLOGY ...
...TECHNOLOGY ...
...TECHNOLOGY ...
...TECHNOLOGY ...

AT BARRE, LTD.
Dancewear Specialty Shop
Supplies for dance classes
Leotards Tights
Aerobic Wear
Costume Accessories
Stage Makeup

Hours
10:00-6:00 M-F
10:00-5:00 Sat

422 Arlington Blvd.
Greenville, N.C. 27834
(919) 756-6670

For Heads Only
Precision Haircutting for Men and Women

Melody Furci
Tina Furci
Beth Long


758-6190 201 E. 5th St.

Cool Weather Ahead!
We've got the BEST selection of sweats in town...

Prices Start at only **\$7.95**



U.B.E.
516 S. COTANCHE
GREENVILLE, N.C.



THIS BUD'S FOR YOU.

JEFFREY'S BEER AND WINE
North Greene Street 758-1515

Overton's Sports Center

*The World's Largest Water Sports Dealer —
And One of Eastern Carolina's largest Sporting Goods Store invites you to come by and see our selection of:*

**Water Sports — Snow Ski Apparel — Guns —
Hunting Supplies — And Shoes**


**SAVE WITH THIS AD!!
Save 10% off of Overton's
Already Low Prices
With this Coupon
(Guns Excluded)**

**Hours:
Mon-Fri 9-7
Sat. 8-6**

**111 Red Banks
Behind Ramada Inn
Greenville, N.C.**

Investors

A FEW AVAILABLE TODAY FOR RESALE. IF YOU BUILDING/SALE UNIT, CALL US NOW. UNITS AVAILABLE.



RINGGOLD
At The Campus East

- SALE AND RENTAL UNITS AVAILABLE
- LOCATED NEXT TO CAMPUS
- CALL TO ORDER AND DELIVERY
- EFFICIENTLY IN A SUBURBAN AREA
- FULLY FURNISHED AND AVAILABLE
- TARIFFS AND A/C UNITS AVAILABLE

WARD PROPER
919-758-1515

STUDENT

Workload too much alone? No free load with a super than a speeding powerful than a and loves to tackle

It's easy. It's IBM.

And now it's more affordable. It's made available through our education program. Turn a mid-term crisis into a long-term solution.

Wright B...
Owned and Operated by E...

...MILITARY BUSINESS

...FEDERAL AGENCIES ADMINISTRATION

...FOR THE STATE OF NORTH CAROLINA

...MILITARY BUSINESS

...FEDERAL AGENCIES ADMINISTRATION

...FOR THE STATE OF NORTH CAROLINA

Only Precision Haircutting Men and Women

Melody Furci
Tina Furci
Beth Long

6190 201 E. 5th St.

To Add Management Experience To Your Resume — Add Army ROTC To Your Schedule.



You've changed a lot of opinions since you entered college. You know a degree may be the door-opener for a future career. But you know a degree is no guarantee.

Today's job market demands more than a degree. Corporations look for "take charge" attitudes in their new executives.

So get a head start on your peers. They'll be competing with you for the best jobs later on.

Army ROTC provides a head start in leadership and management experience. With Army ROTC, you don't just read about it. You do it.

It's not too late to take charge. You can accomplish four years' work in two years.

To add experience to your resume contact:
Captain Alvin Mitchell in room 319, Erwin Hall
Or Call 757-6967 or 6974

ARMY ROTC. BE ALL YOU CAN BE.

Szechuan Garden

PRIVATE SPECIAL \$1.99*
LUNCHEON SPECIAL \$2.75

DINNER SPECIALS

| | |
|-------------------|------------------------------|
| Roast Pork | Sealeg and Beef with Chinese |
| Vegetables \$6.95 | Vegetables \$5.95 |

SUNDAY BUFFET \$3.95 All You Can Eat

Hot Ton or Egg Drop Soup
Chicken & Shrimp with Chinese Vegetables
Fried Chinese Chicken Wings
Szechuan Chow Mein
Sweet & Sour Pork
Young Chow Fried Rice

Mon-Thurs 11:30-9:30
FRI 11:30-10:30
SAT 5:00-10:30
SUN 12:00-9:30

757-1818 TAKE OUT ORDERS

SHAPING UP SPRING SEMESTER COULD SPICE UP YOUR LIFE!

SPRING SEMESTER RATE \$140.00

STUDENT HOURS

Mon-Fri:
6:00 AM - 4:45 PM
9:00 PM - 10:00 PM
Sat and Sun:
8:00 AM - 2:30 PM

HERE'S WHAT YOU GET:
aerobics • basketball • Nautilus
racquetball • 25 yard pool • lifecycles
free weights • volleyball • nursery
indoor track • juice bar and lounge

THINK HOW YOU'LL FEEL!
CALL OR STOP BY TODAY!
756-3395

Greenville Athletic Club
140 OAKMONT DRIVE
Open 7 Days A Week: Mon-Fri 6:00 a.m.-10:00 p.m., Sat & Sun 8:00 a.m.-7:00 p.m.

REGENCY HOUSE

CONDOS

WARD PROPERTY

THE ARBOR RESTAURANT

take advantage of the
All You Can Eat & Drink Special

The Arbor Restaurant

Crab Legs & Chablis
Sweet and Succulent Alaska
..... **\$10.95**

Shrimp and Chablis
Tender shrimp, fried, boiled
..... **\$10.95**

Beef & Burgundy
The best Prime Rib ever!
..... **\$10.95**

All specials include a stuffed potato and a trip to our 40 item bar.

Come and taste the difference.
We promise you won't be disappointed.

Weekend Specials
Served Friday & Saturday Nights

Arbor Restaurant
Located at the Ramada Inn
301 Greenville Blvd.
Greenville, NC 27834
756-2792

| | | | | | | | | | |
|------|-----|----|-----|------|-----|----|-----|-----------|-------|
| 3200 | 201 | NE | ADM | ASPT | DEV | HL | ETH | 1120-1200 | (L-5) |
| 3200 | 202 | NE | ADM | ASPT | DEV | HL | ETH | 1120-1200 | (L-5) |
| 3200 | 203 | NE | ADM | ASPT | DEV | HL | ETH | 1120-1200 | (L-5) |
| 3200 | 204 | NE | ADM | ASPT | DEV | HL | ETH | 1120-1200 | (L-5) |
| 3200 | 205 | NE | ADM | ASPT | DEV | HL | ETH | 1120-1200 | (L-5) |

| | | | | | | | | | |
|------|-----|------|-----|------|-----|-----|-----|-----------|-------|
| 3300 | 201 | PRAC | MEN | HLTH | NSG | CUR | ETH | 1420-2100 | (L-5) |
| 3300 | 202 | PRAC | MEN | HLTH | NSG | CUR | ETH | 1420-2100 | (L-5) |
| 3300 | 203 | PRAC | MEN | HLTH | NSG | CUR | ETH | 1420-2100 | (L-5) |
| 3300 | 204 | PRAC | MEN | HLTH | NSG | CUR | ETH | 1420-2100 | (L-5) |
| 3300 | 205 | PRAC | MEN | HLTH | NSG | CUR | ETH | 1420-2100 | (L-5) |

FREE EYEGLASS FRAMES
 WITH THE PURCHASE OF PRESCRIPTION LENSES
 Choose from our large selection of fashion frames

30 TO 60 % OFF
ALL FRAMES IN STOCK
 WITH PRESCRIPTION LENSES
 Must present coupon with order for discount
 Not Good With Other Advertised Specials
 COUPON EXPIRES NOV. 30, 1985

SOFT CONTACTS
\$59.00 PAIR



Gary M. Harris
 Licensed Optician

703 Greenville Blvd.
 Across From
 The Plaza



OPTICAL PALACE

OPEN 9-30 AM to 6 PM MONDAY THRU FRIDAY • PHONE 756-4204

**TUXEDOS
 BRIDAL GOWNS
 BRIDESMAIDS GOWNS**

after Six
 Oscar de la Renta
 Calvin Klein

Pierre Cardin
 Bill Blass
 Yves St. Laurent

Grooms Rental Free With 4 or More Groomsmen

Special Occasions
 Formals • Weddings • Costumes
 2745 E. 10th St. • 757-3747

OPEN 12-9 PM Mon-Thur
 10-5 Fri-Sat

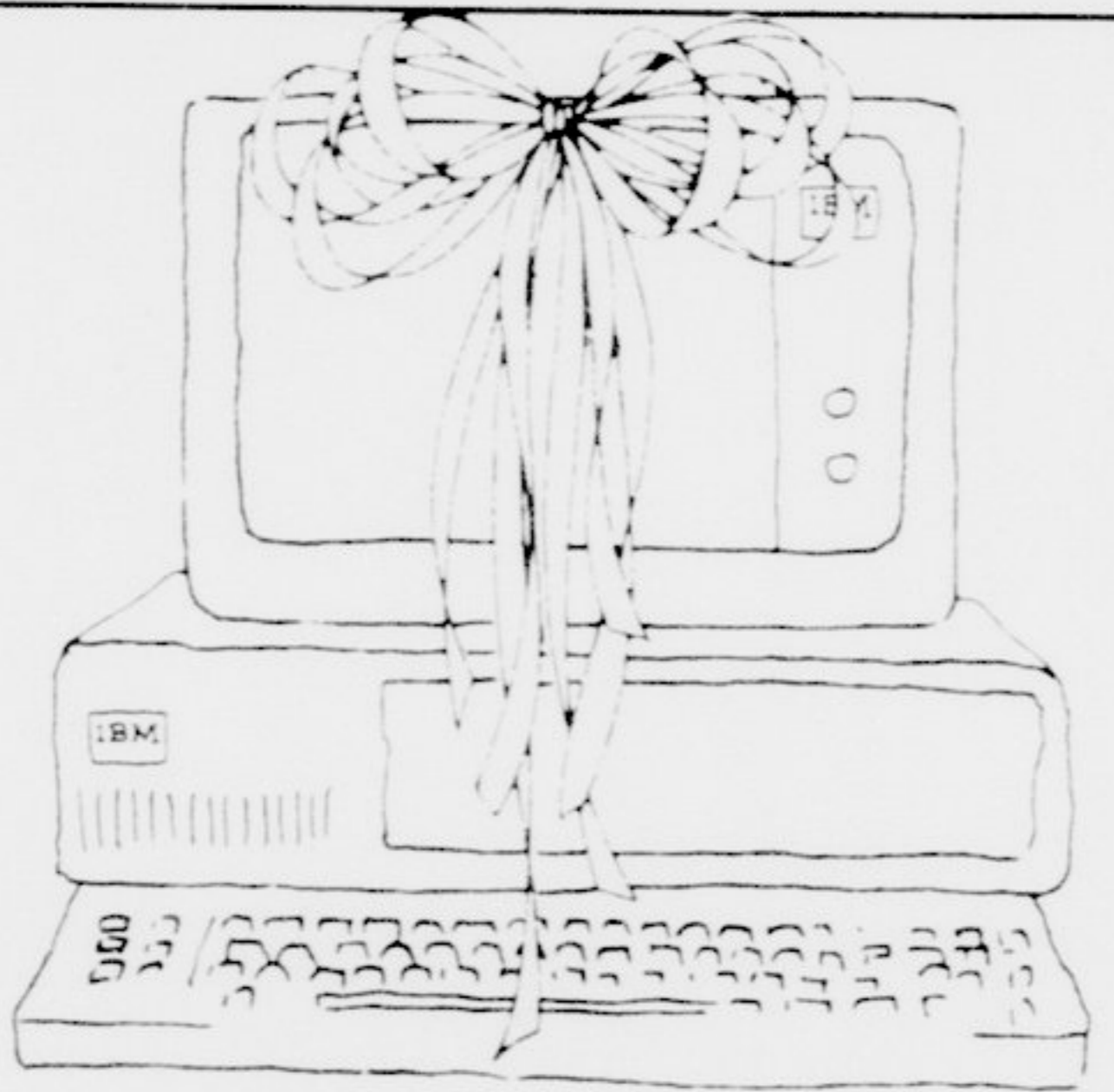
THAT PLACE ON FIFTH
 EATING ESTABLISHMENT



Serving Lunch 11:30-2:00
 Dinner 5-9
 Dinner 5-10 (Fri & Sat)

Specializing in Great Food!!

Located at 118 E. 5th Street



LOOKING FOR THE PERFECT GIFT?

If you could buy time, this is the closest you'll ever get. An IBM Personal Computer can polish and fine tune your output. As the quality of your time goes up — your commitment of time decreases. It will allow you to go home for the holidays — guilt free. That's a real gift!

**Student Stores
 Wright Building**

Owned and Operated by East Carolina University

They're All Natural




You can be sure any choice from our wide selection of natural food products is a quality item that has been carefully chosen because it meets our standards of freshness and purity. We believe food should be whole. That it remains as close to its natural state as possible to ensure all the valuable nutrients are intact.

down to earth
 NATURAL FOODS GROCERY
 756-3302
 The Plaza
 Mon-Sat 10-9

Chi
 a
 R

Taco B



830-1530

| NO. | COURSE DESCRIPTION | CREDIT | PREREQ. | SEM. | YR. | INSTR. | CLAS. |
|------|---------------------------------------|--------|---------|------|-----|--------|-------|
| 0996 | RESEARCH PROJECT | (3) | | | | | |
| 0997 | RESEARCH PROJECT | (3) | | | | | |
| 1000 | PHYS 1000 (45-00) & PHYE 27-1 (45-00) | (4) | | | | | |
| 1001 | PHYS 1001 | (3) | | | | | |
| 1002 | PHYS 1002 | (3) | | | | | |
| 1003 | PHYS 1003 | (3) | | | | | |
| 1004 | PHYS 1004 | (3) | | | | | |
| 1005 | PHYS 1005 | (3) | | | | | |
| 1006 | PHYS 1006 | (3) | | | | | |
| 1007 | PHYS 1007 | (3) | | | | | |
| 1008 | PHYS 1008 | (3) | | | | | |
| 1009 | PHYS 1009 | (3) | | | | | |
| 1010 | PHYS 1010 | (3) | | | | | |
| 1011 | PHYS 1011 | (3) | | | | | |
| 1012 | PHYS 1012 | (3) | | | | | |
| 1013 | PHYS 1013 | (3) | | | | | |
| 1014 | PHYS 1014 | (3) | | | | | |
| 1015 | PHYS 1015 | (3) | | | | | |
| 1016 | PHYS 1016 | (3) | | | | | |
| 1017 | PHYS 1017 | (3) | | | | | |
| 1018 | PHYS 1018 | (3) | | | | | |
| 1019 | PHYS 1019 | (3) | | | | | |
| 1020 | PHYS 1020 | (3) | | | | | |
| 1021 | PHYS 1021 | (3) | | | | | |
| 1022 | PHYS 1022 | (3) | | | | | |
| 1023 | PHYS 1023 | (3) | | | | | |
| 1024 | PHYS 1024 | (3) | | | | | |
| 1025 | PHYS 1025 | (3) | | | | | |
| 1026 | PHYS 1026 | (3) | | | | | |
| 1027 | PHYS 1027 | (3) | | | | | |
| 1028 | PHYS 1028 | (3) | | | | | |
| 1029 | PHYS 1029 | (3) | | | | | |
| 1030 | PHYS 1030 | (3) | | | | | |
| 1031 | PHYS 1031 | (3) | | | | | |
| 1032 | PHYS 1032 | (3) | | | | | |
| 1033 | PHYS 1033 | (3) | | | | | |
| 1034 | PHYS 1034 | (3) | | | | | |
| 1035 | PHYS 1035 | (3) | | | | | |
| 1036 | PHYS 1036 | (3) | | | | | |
| 1037 | PHYS 1037 | (3) | | | | | |
| 1038 | PHYS 1038 | (3) | | | | | |
| 1039 | PHYS 1039 | (3) | | | | | |
| 1040 | PHYS 1040 | (3) | | | | | |
| 1041 | PHYS 1041 | (3) | | | | | |
| 1042 | PHYS 1042 | (3) | | | | | |
| 1043 | PHYS 1043 | (3) | | | | | |
| 1044 | PHYS 1044 | (3) | | | | | |
| 1045 | PHYS 1045 | (3) | | | | | |
| 1046 | PHYS 1046 | (3) | | | | | |
| 1047 | PHYS 1047 | (3) | | | | | |
| 1048 | PHYS 1048 | (3) | | | | | |
| 1049 | PHYS 1049 | (3) | | | | | |
| 1050 | PHYS 1050 | (3) | | | | | |
| 1051 | PHYS 1051 | (3) | | | | | |
| 1052 | PHYS 1052 | (3) | | | | | |
| 1053 | PHYS 1053 | (3) | | | | | |
| 1054 | PHYS 1054 | (3) | | | | | |
| 1055 | PHYS 1055 | (3) | | | | | |
| 1056 | PHYS 1056 | (3) | | | | | |
| 1057 | PHYS 1057 | (3) | | | | | |
| 1058 | PHYS 1058 | (3) | | | | | |
| 1059 | PHYS 1059 | (3) | | | | | |
| 1060 | PHYS 1060 | (3) | | | | | |
| 1061 | PHYS 1061 | (3) | | | | | |
| 1062 | PHYS 1062 | (3) | | | | | |
| 1063 | PHYS 1063 | (3) | | | | | |
| 1064 | PHYS 1064 | (3) | | | | | |
| 1065 | PHYS 1065 | (3) | | | | | |
| 1066 | PHYS 1066 | (3) | | | | | |
| 1067 | PHYS 1067 | (3) | | | | | |
| 1068 | PHYS 1068 | (3) | | | | | |
| 1069 | PHYS 1069 | (3) | | | | | |
| 1070 | PHYS 1070 | (3) | | | | | |
| 1071 | PHYS 1071 | (3) | | | | | |
| 1072 | PHYS 1072 | (3) | | | | | |
| 1073 | PHYS 1073 | (3) | | | | | |
| 1074 | PHYS 1074 | (3) | | | | | |
| 1075 | PHYS 1075 | (3) | | | | | |
| 1076 | PHYS 1076 | (3) | | | | | |
| 1077 | PHYS 1077 | (3) | | | | | |
| 1078 | PHYS 1078 | (3) | | | | | |
| 1079 | PHYS 1079 | (3) | | | | | |
| 1080 | PHYS 1080 | (3) | | | | | |
| 1081 | PHYS 1081 | (3) | | | | | |
| 1082 | PHYS 1082 | (3) | | | | | |
| 1083 | PHYS 1083 | (3) | | | | | |
| 1084 | PHYS 1084 | (3) | | | | | |
| 1085 | PHYS 1085 | (3) | | | | | |
| 1086 | PHYS 1086 | (3) | | | | | |
| 1087 | PHYS 1087 | (3) | | | | | |
| 1088 | PHYS 1088 | (3) | | | | | |
| 1089 | PHYS 1089 | (3) | | | | | |
| 1090 | PHYS 1090 | (3) | | | | | |
| 1091 | PHYS 1091 | (3) | | | | | |
| 1092 | PHYS 1092 | (3) | | | | | |
| 1093 | PHYS 1093 | (3) | | | | | |
| 1094 | PHYS 1094 | (3) | | | | | |
| 1095 | PHYS 1095 | (3) | | | | | |
| 1096 | PHYS 1096 | (3) | | | | | |
| 1097 | PHYS 1097 | (3) | | | | | |
| 1098 | PHYS 1098 | (3) | | | | | |
| 1099 | PHYS 1099 | (3) | | | | | |
| 1100 | PHYS 1100 | (3) | | | | | |
| 1101 | PHYS 1101 | (3) | | | | | |
| 1102 | PHYS 1102 | (3) | | | | | |
| 1103 | PHYS 1103 | (3) | | | | | |
| 1104 | PHYS 1104 | (3) | | | | | |
| 1105 | PHYS 1105 | (3) | | | | | |
| 1106 | PHYS 1106 | (3) | | | | | |
| 1107 | PHYS 1107 | (3) | | | | | |
| 1108 | PHYS 1108 | (3) | | | | | |
| 1109 | PHYS 1109 | (3) | | | | | |
| 1110 | PHYS 1110 | (3) | | | | | |
| 1111 | PHYS 1111 | (3) | | | | | |
| 1112 | PHYS 1112 | (3) | | | | | |
| 1113 | PHYS 1113 | (3) | | | | | |
| 1114 | PHYS 1114 | (3) | | | | | |
| 1115 | PHYS 1115 | (3) | | | | | |
| 1116 | PHYS 1116 | (3) | | | | | |
| 1117 | PHYS 1117 | (3) | | | | | |
| 1118 | PHYS 1118 | (3) | | | | | |
| 1119 | PHYS 1119 | (3) | | | | | |
| 1120 | PHYS 1120 | (3) | | | | | |
| 1121 | PHYS 1121 | (3) | | | | | |
| 1122 | PHYS 1122 | (3) | | | | | |
| 1123 | PHYS 1123 | (3) | | | | | |
| 1124 | PHYS 1124 | (3) | | | | | |
| 1125 | PHYS 1125 | (3) | | | | | |
| 1126 | PHYS 1126 | (3) | | | | | |
| 1127 | PHYS 1127 | (3) | | | | | |
| 1128 | PHYS 1128 | (3) | | | | | |
| 1129 | PHYS 1129 | (3) | | | | | |
| 1130 | PHYS 1130 | (3) | | | | | |
| 1131 | PHYS 1131 | (3) | | | | | |
| 1132 | PHYS 1132 | (3) | | | | | |
| 1133 | PHYS 1133 | (3) | | | | | |
| 1134 | PHYS 1134 | (3) | | | | | |
| 1135 | PHYS 1135 | (3) | | | | | |
| 1136 | PHYS 1136 | (3) | | | | | |
| 1137 | PHYS 1137 | (3) | | | | | |
| 1138 | PHYS 1138 | (3) | | | | | |
| 1139 | PHYS 1139 | (3) | | | | | |
| 1140 | PHYS 1140 | (3) | | | | | |
| 1141 | PHYS 1141 | (3) | | | | | |
| 1142 | PHYS 1142 | (3) | | | | | |
| 1143 | PHYS 1143 | (3) | | | | | |
| 1144 | PHYS 1144 | (3) | | | | | |
| 1145 | PHYS 1145 | (3) | | | | | |
| 1146 | PHYS 1146 | (3) | | | | | |
| 1147 | PHYS 1147 | (3) | | | | | |
| 1148 | PHYS 1148 | (3) | | | | | |
| 1149 | PHYS 1149 | (3) | | | | | |
| 1150 | PHYS 1150 | (3) | | | | | |
| 1151 | PHYS 1151 | (3) | | | | | |
| 1152 | PHYS 1152 | (3) | | | | | |
| 1153 | PHYS 1153 | (3) | | | | | |
| 1154 | PHYS 1154 | (3) | | | | | |
| 1155 | PHYS 1155 | (3) | | | | | |
| 1156 | PHYS 1156 | (3) | | | | | |
| 1157 | PHYS 1157 | (3) | | | | | |
| 1158 | PHYS 1158 | (3) | | | | | |
| 1159 | PHYS 1159 | (3) | | | | | |
| 1160 | PHYS 1160 | (3) | | | | | |
| 1161 | PHYS 1161 | (3) | | | | | |
| 1162 | PHYS 1162 | (3) | | | | | |
| 1163 | PHYS 1163 | (3) | | | | | |
| 1164 | PHYS 1164 | (3) | | | | | |
| 1165 | PHYS 1165 | (3) | | | | | |
| 1166 | PHYS 1166 | (3) | | | | | |
| 1167 | PHYS 1167 | (3) | | | | | |
| 1168 | PHYS 1168 | (3) | | | | | |
| 1169 | PHYS 1169 | (3) | | | | | |
| 1170 | PHYS 1170 | (3) | | | | | |
| 1171 | PHYS 1171 | (3) | | | | | |
| 1172 | PHYS 1172 | (3) | | | | | |
| 1173 | PHYS 1173 | (3) | | | | | |
| 1174 | PHYS 1174 | (3) | | | | | |
| 1175 | PHYS 1175 | (3) | | | | | |
| 1176 | PHYS 1176 | (3) | | | | | |
| 1177 | PHYS 1177 | (3) | | | | | |
| 1178 | PHYS 1178 | (3) | | | | | |
| 1179 | PHYS 1179 | (3) | | | | | |
| 1180 | PHYS 1180 | (3) | | | | | |
| 1181 | PHYS 1181 | (3) | | | | | |
| 1182 | PHYS 1182 | (3) | | | | | |
| 1183 | PHYS 1183 | (3) | | | | | |
| 1184 | PHYS 1184 | (3) | | | | | |
| 1185 | PHYS 1185 | (3) | | | | | |
| 1186 | PHYS 1186 | (3) | | | | | |
| 1187 | PHYS 1187 | (3) | | | | | |
| 1188 | PHYS 1188 | (3) | | | | | |
| 1189 | PHYS 1189 | (3) | | | | | |
| 1190 | PHYS 1190 | (3) | | | | | |
| 1191 | PHYS 1191 | (3) | | | | | |
| 1192 | PHYS 1192 | (3) | | | | | |
| 1193 | PHYS 1193 | (3) | | | | | |
| 1194 | PHYS 1194 | (3) | | | | | |

RUSS (RUSSIAN)
 COLLEGE DESCRIPTION
 COURSE NUMBER
 COURSE TITLE
 CREDIT HOURS
 Prerequisite(s)
 Description of course
 Instructor
 Section Number
 Section Time
 Section Location

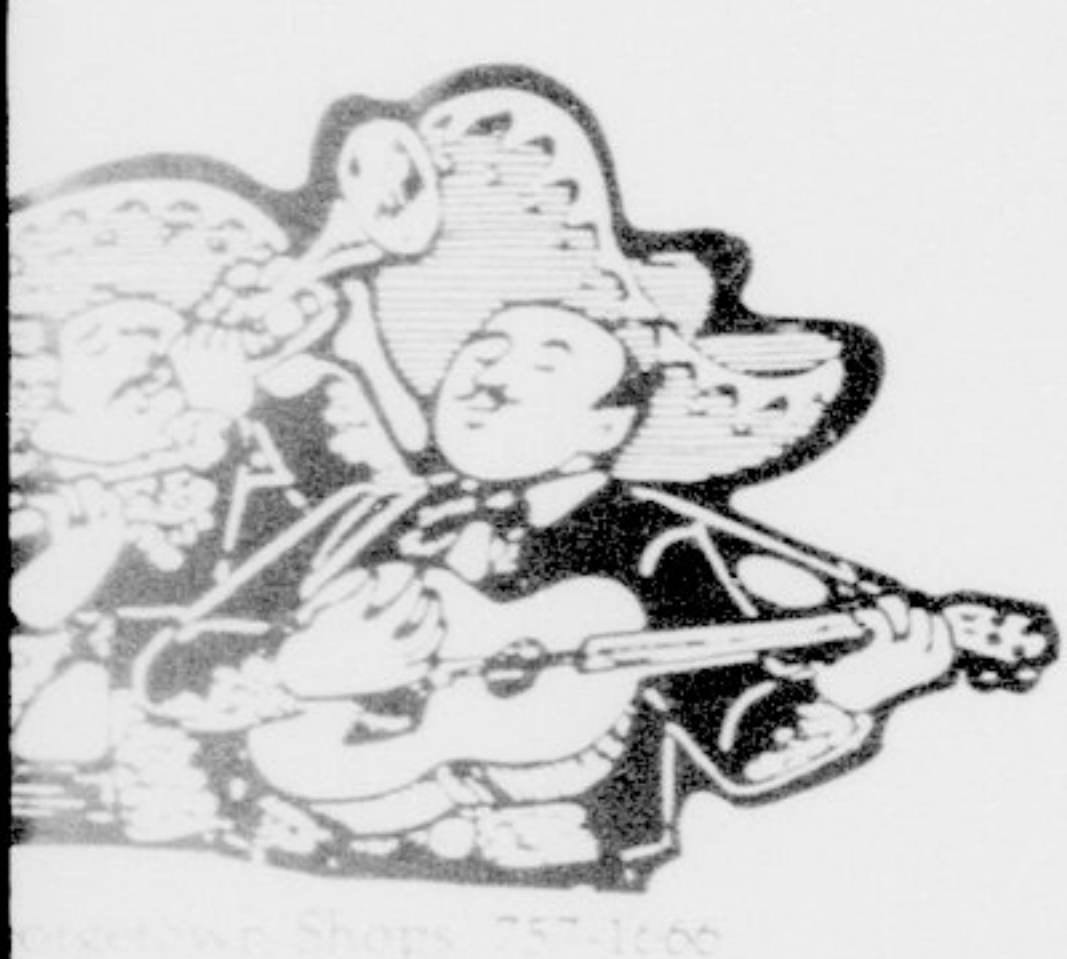
SCIENCE EDUCATION
 COLLEGE DESCRIPTION
 COURSE NUMBER
 COURSE TITLE
 CREDIT HOURS
 Prerequisite(s)
 Description of course
 Instructor
 Section Number
 Section Time
 Section Location

STUDENT TEACHING - FEBRUARY 15 - MAY 14, 1986
 COLLEGE DESCRIPTION
 COURSE NUMBER
 COURSE TITLE
 CREDIT HOURS
 Prerequisite(s)
 Description of course
 Instructor
 Section Number
 Section Time
 Section Location

SCIENCE EDUCATION
 COLLEGE DESCRIPTION
 COURSE NUMBER
 COURSE TITLE
 CREDIT HOURS
 Prerequisite(s)
 Description of course
 Instructor
 Section Number
 Section Time
 Section Location

SCIENCE EDUCATION
 COLLEGE DESCRIPTION
 COURSE NUMBER
 COURSE TITLE
 CREDIT HOURS
 Prerequisite(s)
 Description of course
 Instructor
 Section Number
 Section Time
 Section Location

MICOS
 Restaurant
 The Best
 Mexican Food
 Side of
 Grande
 7 Days a Week
 Lunch & Dinner



Fabricate TOO

Get Ready for Cool Weather

- Heavy Cotton Tops, Pants & Skirts
- Wool Sweaters & Ponchos
- Hat, mittens, gloves & tights
- Hand-crafted jewelry

Specializing in Natural Fiber Clothing for Women

116 E. 5th St. Mon-Sat 10:00-5:30
 Next Door to Book Barn 757-3944



RIBTACULAR
 ALL YOU CAN EAT . . .

RIBS!
RIBS!
RIBS!



Every Wednesday from now until Dec. 18th between 5:00 - 9:00 Darryl's 1907, Greenville, is celebrating the Holiday Season early with an ALL YOU CAN EAT FEAST of our tender, juicy beef ribs for the unbelievable price of \$7.95. We'll even include a free salad!

SO . . . COME AND GET A TASTE OF

DARRYL'S
 800 East 10th St., Greenville

Station Fee
 Squat Machines

SPEEDY REEDY'S

PIZZA

FAST, FREE DELIVERY
 (LIMITED DELIVERY AREA)

SPEEDY REEDY'S PIZZA
 2611 E. 10th St.

Foot Long Extra Thick Subs -- Hot or Cold
 8" Extra Thick Hoagies -- Hot or Cold

Please order by number

| | | | | |
|--|----|-----|------|------|
| 1. Cheese Steak...Tender thin slices of beef and provolone cheese. | 8" | 12" | 2.95 | 4.15 |
| 2. Cheese Steak w/mushrooms | | | 3.25 | 4.75 |
| 2. Pizza Sub... When a Pizza is too much. Ham, Salami, Pepperoni, mozzarella cheese and Pizza sauce, Hot only | | | 2.95 | 3.95 |
| 3. Turkey, Ham & Provolone, Delicious | | | 2.90 | 3.85 |
| 4. Italian Stallion...2 Hams, salami, Provolone cheese, Hot peppers | | | 2.95 | 4.15 |
| 5. All-American...Stacked Ham and cheese smothered with Provolone | | | 2.90 | 3.85 |
| 6. Turkey...Turkey Breast sliced thin (all white meat) with Provolone | | | 2.70 | 3.80 |
| 7. Roast Beef...Thin sliced Eye of Round, topped with Provolone cheese. | | | 2.95 | 4.15 |
| 8. Bologna...Budget special. Lots of Bologna and Provolone cheese | | | 2.35 | 3.15 |

Items:
 CHEESE
 REAL PEPPERONI
 FRESH MUSHROOMS
 ITALIAN SAUSAGE
 CANADIAN BACON
 GROUND BEEF
 GREEN PEPPERS
 ONIONS
 HOT PEPPERS
 BLACK OLIVES
 GREEN OLIVES

HAM
 ANCHOVIES
 EXTRA CHEESE
 THICK CRUST

FREE EXTRA CHEESE on every pizza!

PRICES:

| | 12" | 14" | 16" |
|--------------|-------|-------|-------|
| PLAIN CHEESE | 5.00 | 6.60 | 7.20 |
| 1 ITEM | 5.95 | 7.60 | 8.60 |
| 2 ITEMS | 6.90 | 8.60 | 10.00 |
| 3 ITEMS | 7.85 | 9.60 | 11.40 |
| 4 ITEMS | 8.80 | 10.60 | 12.80 |
| 5 ITEMS | 9.75 | 11.60 | 14.20 |
| 6 ITEMS | 10.70 | 12.60 | 15.60 |
| 7 ITEMS | 11.65 | 13.60 | 17.00 |
| 8 ITEMS | 12.60 | 14.60 | 18.40 |
| 9 ITEMS | 13.55 | 15.60 | 19.80 |
| DELUXE | 8.80 | 10.60 | 12.80 |
| VEGETARIAN | 9.75 | 11.60 | 14.20 |
| RUNNER | 9.75 | 11.60 | 14.20 |
| MARATHON | 13.55 | 15.60 | 19.80 |

TAX ALREADY INCLUDED

HOURS:
MON.-THURS 11 A.M.-12 MIDNIGHT
FRI. & SAT. 11 A.M.-2 A.M. SUN. 11 A.M.-1 A.M.
 we'll be serving SUB'S from 11 a.m. to 10 p.m. everyday!

FREE PEPSI'S WITH EVERY PIZZA

FREE GIFTS

ONLY WEDS. 6th 758-9999

AND THURS. 7th 758-9999



SPEEDY REEDY'S PIZZA WILL GIVE AWAY FREE GIFTS FROM 5 PM TO 11 PM EVERY HALF HOUR TO THE FIRST PERSON THAT CALLS CLOSEST TO THE HALF HOUR.

PRIZES TO BE GIVEN AWAY:
 MINI FM STEREO W/BELT CLIP AND FOAM CUSHIONED LIGHT WEIGHT HEADPHONES. SOLAR & BATTERY POWERED HAND CALCULATORS. SOLAR POWER CLOCK. CALCULATOR/RULER. DIGITAL L.E.D. ALARM CLOCK W/DESK LAMP. BACK PACK W/SPIRAL NOTEBOOK AND FILLER PAPER. ELECTRONIC DIGITAL ALARM CLOCK. SPEEDY REEDY'S PIZZA T-SHIRTS.

REMEMBER! WEDS. ONLY 6th THURS. 7th

