

# East Carolinian

East Carolina College

Volume XXXVII

GREENVILLE, N. C., TUESDAY, JANUARY 16, 1962

Number 17

## Holiday Fling Ends In Student Suspensions

### Violators Receive Severe Discipline Group Penalties

Four students were suspended for the remainder of this quarter and Spring Quarter following consideration of their cases by the Discipline Committee last Monday, January 8. A fifth student, involved circumstantially, was not penalized.

Case I. Two girls were charged:

with the breaking of three college regulations: 1. Failure to sign in within 30 minutes after arrival in Greenville. 2. Spending the night in men's apartment. 3. Visiting in a Greenville home without a invitation from the lady of the house.

The girls arrived in Greenville on the evening of January 2 and instead of reporting directly to their dorm went to visit three college men at the men's apartment. The girls maintain that they did not go there for the purpose of spending the night but only to have one last fling before returning to their classes. They talked with the fellows, played records, danced, and drank cokes.

Before the girls realized it, it was too late for them to get in their dorm. The girls decided that they would remain at the apartment for the night. They say they spent the night sitting up in chairs, that the evening was strictly a platonic one, and that no alcoholic beverages were consumed.

The girls appeared before the committee and admitted their guilt in the infraction of college rules.

The committee voted to suspend the girls for the remainder of this quarter and spring quarter. If the colleges sees fit to allow them to re-enter, they will be on strict probation

for the first full term that they are enrolled.

Case II. The college men in whose apartment the events of the preceding case took place were charged with permitting girls to spend the night in their apartment.

The men appeared before the committee and admitted that the girls did remain at their apartment overnight. After hearing the statements of each of them, the committee felt that one of them was a victim of circumstances and should not be penalized.

The committee voted to suspend two of the men for the remainder of this quarter and spring quarter. If the college sees fit to allow them to re-enter, they will be on strict probation for the first full term that they are enrolled.

Case III. The two men who were suspended in Case II were also before the committee on the charge of ungentlemanly conduct which would bring discredit to the name of the college. The two engaged in some scuffling in their apartment and broke some items of furniture. At the same time there were some additional loud noises from their apartment and someone in the neighborhood called the police.

When the police entered the apartment, they discovered some highway signs, which the men say were carried to their apartment by a young lady who is a former student. The men indicated that they were intending to turn the signs over to the police. The men appeared in court, were not charged with the larceny of the signs but were charged with the destruction of personal property and were permitted to settle out of court with their landlady.

The committee voted that should these men desire to re-enter East Carolina College they would be placed on probation for one quarter in addition to the penalty given in Case II. To be specific, they would be on probation for two full terms.

### College Changes Present Student Absence Policy

Students, as of January 15, will be personally responsible for reporting their excused absences. Because of increased enrollment, the excused cut list is becoming too large to be effective, and the administration has proposed a new procedure in handling excused absences.

After a legitimate absence the individual student will present an excuse to the appropriate dean's office (Dean of Men, Dean of Women). This must be done within one week after the student returns to class. An excused cut form with the student's name typed on the form will be given the student. The student will take this form to the classes which were missed and absences will be recorded as excused.

Only forms which have been dated and stamped by the Dean's Office will be accepted, and forms with erasures or which have not been typed will be invalid. An excused cut list will be used only when a large number of students leave the campus in a body (athletic teams, band, choir, glee clubs).

The Infirmary will give students slips when they leave the Infirmary which are to be taken to the Dean's Office, and an excused cut form will then be issued to the students.

Daily handling of excuses by the faculty and administration will greatly reduce the time required to take care of the excused cuts. Accuracy and efficiency should be increased. Cooperation in this endeavor is earnestly solicited by Dean James Mallory and Dean Ruth White.

Chi Beta Phi, honorary Science Fraternity, will have Dr. D. F. Fluke as guest speaker at their January 18 meeting, at 7:30 p.m. in Flanagan-317.

The topic of the talk will be "Radiation Biophysics". Anyone interested is invited to attend.

### Professor's Tests Uncover No Significant Radiation Traces

No significant amount of radiation fallout caused by last week's snow was detected in a series of tests conducted on campus by Dr. Frank Eller, science professor. The tests were carried out using Geiger counters as detection devices.

"The tests were conducted," Dr. Eller said, "to assure the people of the area that no danger from fallout has come as a result of the snow." He stated that he had tested for both Alpha and Beta rays.

Dr. Eller, chief radiation official for the Pitt County Civil Defense organization, conducted last fall a course in Radiation Monitoring for Pitt County. Approximately 100 men and women who completed the course were certified to use radiation detection devices.



"Would you care for a brandy, Darling?" invites Shirley Morse, Auntie Mame's girl-about-town actress friend. "It's so stimulating, you know."

## 'Auntie Mame' Hit Premieres Thursday

Minnie Gaster, in the role of Auntie Mame, will star in the College Playhouse's next presentation of the season, the Broadway comedy hit, "Auntie Mame."

(Scheduled for four performances, the comedy will be presented here January 18, 19, and 20 at 8:15 p.m. in McGinnis Auditorium, and then the Playhouse goes on the road for the fourth performance January 23 to the Base Theater at Camp Lejeune for an 8 p.m. show.)

Jerome Lawrence and Robert E. Lee's adaptation of the play is from the best-selling novel of the same name by Patrick Dennis.

The play presents Miss Gaster as an eccentric, flitty, mapcap woman engrossed in raising an orphan nephew through 18 years of hilarious, comedy situations. "Auntie Mame's" fast moving pace carries the rambling aunt from one odd adventure to another in a series of ageless episodes.

### Student NEA Issues Special Invitation

The Student National Education Association invites all students who are interested to attend a special meeting January 18, 1962, in Rawl Auditorium at 7:00 P.M.

Student teachers of Dr. Utterback in the English Department will have charge of the program which will be of valuable information for those who are to student teach.

The program will consist of a panel discussion on the various aspects of student teaching: (1) discipline (2) making lesson plans (3) assistance of the classroom supervisor and (4) maintaining a professional attitude.

Questions from the audience will be entertained after the panel discussion.

Costumes for the play will feature designs from the roaring 20's to the soaring 60's. One of the highlights is a visit to the ultra, exurbanite Connecticut family of the frivolous girl Auntie Mame's nephew wishes to marry. Liberal-minded Auntie Mame squelches the idea completely.

#### Biggest Cast

Though the whole comedy is magnitized by the scatterbrained Auntie Mame, there are in the play a number of other vivid characters — close to 50 in all, one of the biggest casts of any non-musical comedy of recent times.

Supporting Miss Gaster in the comedy attraction will be student actors, C. Thomas Jackson, as Auntie Mame's nephew; Shirley Morse, as Vera Charles, Mame's actress friend; William E. Rackley, as Beauregard Burnside, her good-natured Southern husband; Loretta Foster, as the nephew's nit-wit fiancée;

Reida Ann Poe, as Sally McDougall, a disagreeable Dixie belle; Jim Rockey, as Brian O'Bannon, Mame's erratic ghost writer for Mame's memoirs; Rachel Marshbourne, as Agnes Gooch, a frumpy secretary; and Howard Mallard, as the nephew's outrageous trustee, Mr. Babcock.

#### Rives Directing

Directing the play is Dr. Ralph H. Rives, and designing its numerous, far-ranging settings are Paul Minnis and Donald Sexauer of the art faculty.

Tickets will be on sale at the door for campus performances January 18 and 19. Tickets for the January 20 performance only may be obtained by writing Playhouse Ticket Bureau, Box 894, East Carolina College, and enclosing a stamped envelope. Prices are \$1 for adults and \$.50 for high school students.

## APO Schedules Annual White Ball Winter Dance

EC's largest winter quarter dance, the Alpha Phi Omega Annual White Ball, will be held Friday night, January 19, in Wright Auditorium from 8:30-11:30 p.m. Music for the semi-formal dance will be furnished by the Jimmy Burns Orchestra.

Tickets for the dance may be purchased from any APO member for \$2.00, stag or couple, or they may be purchased at the door Friday night. All proceeds from the White Ball will go to the Cripple Children's Fund.

The candidate receiving the most votes, at a penny a vote, will be crowned the 1962 White Ball queen during intermission by Miss Diana Foster, the APO fraternity sweetheart. Voting began yesterday in the College Union lounge and will continue through 5:00 p.m. Friday.

Heading the overall committee for the dance is Nathan Gay, and serving with him on other committees are: Decorations, David Smith; Entertainment, Hal Smith; Publicity, Jimmy Loggins and Ray Watson; and Flowers, Sam Worsley.



# East Carolinian

Published by the students of East Carolina College, Greenville, N. C.

Member  
Carolinas Collegiate Press Association  
Associated Collegiate Press

Patsy Elliott  
EDITOR

Keith Hobbs  
BUSINESS MANAGER

Co-Managing Editors	Monty Mills, Jean Peace
Associate Editor	Marcelle Vogel
Sports Editor	Richard Boyd
Feature Editor	Kaye Burgess
News Editor	Donna Bingham
Campus Editor	Bill Griffin
Review Editor	George Gardner
Cartoonists	Jay Arledge, Larry Blizzard
Photographer	Skip Wamsley
Reporters	Parker Chesson, Tony Katsias, Carol Euler, Kaye Burgess, Rosalie Vogel, Clifton Journigan, Kathryn Elaine Johnson, John Behr, Hilda Laton, Tom McAlister, Marion Moore, Cathy Shesso, Paulette Ward, Linda Daniels, Betsey Williamson, Carolyn Braxton, Alan T. Penn
Columnists	Jean Peace, George Gardner, Monty Mills, Larry Blizzard, J. Alfred Willis

OFFICES on the second floor of Wright Building.  
Telephone, all departments, PL 2-6101, extension 264.

## Men Students Resent Equal Punishment Rule

We fail to understand the attitude expressed by some of our male population when one of their sex, involved with a coed in breaking college regulations, appears before the Judiciary or Discipline Committee and receives punishment equivalent to that of the young lady.

(We make no particular reference to the case appearing on page 1.)

In general, it seems that a few men students find it distasteful to fall receptor to probation, suspension, or expulsion when a coed they might have influenced receives one of these penalties.

In a memorandum to the Men's Judiciary, there appears this statement, "In principle, East Carolina College endorses a single standard of conduct for all students. This in general emphasizes that any boy who is a party to an act involving a girl's probation, expulsion, or suspension will also receive the same penalty."

With knowledge of this principle, a male student should realize that whenever he is directly or indirectly responsible for or a party to a woman student breaking a regulation, he is subject to an identical penalty. Why, then, should he or his cohorts feel an injustice has been done?

## Burning Candle . . . Lack Of Thought

### 'Ridiculous' Rules Prevent Tragedies, Property Loss

By JEAN PEACE

A near tragedy was prevented last Sunday night in Umstead. Greenville firemen were called promptly and the blaze was quickly controlled. Damaged was estimated at \$200, but luckily no one was injured.

The flame from a candle in the window, caught the curtains, shade, and then a pillow on fire.

An open flame in any form is dangerous and should be handled cautiously. The student handbook lists rules and more rules that we sometimes overlook or often think ridiculous. These rules were written from experience, and there is a specific reason for each one.

Certainly everyone would like to have a toaster hot plate, and coffee maker in the room. Why does the administration forbid this? The wiring in the dormitories is not equipped to carry a load any heavier than it now carries. Overloading the circuit is dangerous with a possibility of total destruction to an entire building and the loss of many lives. We are all well acquainted with the condition of our older dormitories and know they are not modern and fireproof.

This is not a matter to be turned aside with little or no thought. We are now entering the adult world, and cannot be watched every moment as we once were. Although we may not possess the judgment and wisdom of our elders, we might find it to our advantage to think of safety for ourselves and

other students living in the dormitory.

Perhaps someday EC will provide kitchens in the dormitories where we may cook soup, toast sandwiches, and make coffee; but until that time, let's be careful.

## Freshman Beanies Stand On End From Trite Remarks

(ACP) — From the CAMPUS, Southern Methodist University come these "Remarks a freshman gets tired of hearing:"

"In your hands lies the future of the world and you must prepare for the role of leadership which you are to play."

"Now you take this card, see, and write your name . . ."

"Freshman where's your beanie?"

"For many of you, this will be your first . . ."

"You will find these days to be the best days of your life . . ."

"Participate in all you can. In this you realize college's fullest meaning."

"Confine your extra-curricular attitude rigidly."

"No, you can't take Marriage and Home 106 in your freshman year."

## Welfare Agency Expresses Warm Appreciation

We would like to express through the student newspaper our warm "thank you" to the Fraternities, Sororities, and Clubs that helped our agency during the Thanksgiving and Christmas Season.

This is the first year that the Child Welfare Division has had its own separate campaign, and East Carolina seemed to rally to our call. The Fraternities, Sororities, and Clubs who gave a Christmas basket, clothes, or party did more than bring joy to a child on Christmas morning. They added a step to a campaign to help some mother or child achieve a warm understanding and a confidence in love which both are going to need. We are sure that some of the families visited did not have broken windows, the earth for a floor, and the odor of unpleasant living, or at least we hope so. We are trying to help these families tear down the foundations of frustration, disillusionment and humiliation by encouraging families to share in the life of neighborhood and community. It is so easy to judge people in our own eyes, but the old Indian idea of "do not judge your brother until you have walked three days in his moccasins" is a good idea for understanding.

Although we may not have a complete list of all students that helped, we would like to mention a few that helped our children. Kappa Alpha Order, Lambda Chi Alpha, Sigma Phi Epsilon, Alpha Phi, Kappa Delta, Phi Omicron, and the Math Club.

May we also extend to these organizations and East Carolina College our wishes for a Happy New Year.

J. S. Grimes, III  
Director of Public Welfare  
Mrs. Barbara W. Howell  
Public Welfare Worker I  
William T. Gartman, Jr.  
Public Welfare Worker I

## 'Out Of Order' Sign Causes Various Student Reactions

(ACP) — "These stairs are out of order. Please use the elevator."

Thus read a sign placed by a student at the top of the first flight of stairs at Long Beach State College.

Reactions varied, says the FORTY-NINER: Brash students ignored the sign and bravely rushed on where wise men fear to tread. More cautious students assumed an attitude of look before you leap. They nonchalantly watched others go onward and upward, then calmly waited to hear reports of their fate.

Timid students, hearing no screams of anguish, seeing no one returning and finding themselves late for class, fearfully climbed on to learn that the sign carried no significance.

## 'Finny Business' At Utah U Makes Fish Glow Green In Light

(ACP) — The fish in the Union fishpond at the University of Utah wish students would "cut out all the finny business."

Recently the fish mysteriously turned a bright green. Chemists were called to test the pond water and the green dye was found to be nontoxic. Predictions were that the dye would cause the fish to glow when the lights were turned on at night.

## LITTLE MAN ON CAMPUS



## Vote Equal To Grain Of Sand?

### Buckley's Specious Polemic Encourages Inconsistencies

By J. ALFORD WILLIS

Tommy Mallison, local student senator, heard William F. Buckley, who is to appear here soon, while in Madison, Wisconsin, attending the National Student Association Congress. The speech Buckley gave, as reported by the Wisconsin State Journal, contained such specious polemics as these two:

1. "He accused the liberals of doing what they think best for society without an ample grass roots popular mandate . . ." Further on he added, "I do not believe in universal franchise any more than Washington did." Buckley said there should be certain educational qualifications . . .

In his book, *Up From Liberalism*, Buckley writes, "In America, an individual's vote on a matter of importance has about the weight of a grain of sand. Effective political freedom yields palpable results. It is the kind of freedom a man enjoys when his voice has a discernible effect on his political determination by which he is to live." So, is Buckley saying that what the liberals are doing best for society is not what he thinks best for society and what he thinks best for society should be done?

2. Another point where Buckley is inconsistent — "I do not believe in the breaking down of state rights, even for the sake of integrating the schools." He would use education and moral suasion." But the use of such techniques as education and moral suasion is what Buckley, in his book, accuses liberals of using to "indoctrinate" the students. Is Buckley saying that "indoctrination" is an infringement on academic freedom and is sinful because it is brain-washing when the liberals do it, but when Buckley indoctrinates it is good?

Yes, dear reader this is as much a polemic attack on Buckley as Buckley attacks on liberals. So before it gets too bitter let me end by saying that Buckley is for "freedom" and "individuality." In *Up From Liberalism* Buckley says that "welfare state" measures as exemplified by Social Security leads to slothfulness, economic ruin, and slavery. Instead "Let the individual keep his dollar — however few he is able to save — and he can indulge in houses, in doctors, in education, in groceries, in entertainment, in culture, in religion; give him the right of free speech or the

right to go to the polling booth at best he contributes to a negative determination, contributes a general rule an exigent rule.

Yes sir, boy! Make Social security voluntary. Social Security puts aside money for old age people who otherwise could not afford to do so. Naturally if it is voluntary, the people who join are the ones who could afford to and wouldn't join. And that the programs help out afford to join.

Yes sir! The Negro here in Greenville who makes from \$10 to thirteen dollars a week and to pay from five to ten dollars a week for house rent has all the money for groceries, entertainment, and culture. Why are people so free and independent that all of them are conservative?

John Randolph once made a comment on one of his opponent's speeches (naturally I am not playing Mr. Buckley) — "His words are like a rotten fish seen in moonlight, they shine and stink."

## Hawaiian Center Offers 21-Month Scholarships

Less than a month is left to apply for one of the most valuable scholarships available to American graduate students interested in Asia.

The East-West Center at the University of Hawaii is offering for the third year a 21-month scholarship that provides round-trip transportation, tuition, books and fees, housing and health insurance, a small personal allowance, and an academic stipend.

Students interested in promoting mutual understanding between Asia, the Pacific area and the United States may concentrate their efforts to three major programs: Student Scholarship Program, Institute of Advanced Studies, and International Training Agency.

Inquiries may be directed to the Director of Student Program, East-West Center, University of Hawaii, Honolulu 14, Hawaii.



## Society Sponsors Essay Contest

The Thomas Jefferson Society of the United States of America is sponsoring three prize essay contests for the year 1962. The essays must deal with the economic, political and religious ideas of Thomas Jefferson.

The contest, open to all students in colleges and universities, consists of a \$1000 prize for an essay on the topic "Thomas Jefferson and the Constitution of the United States."

Essays must be original, unpublished, and written by the contestant himself. Judges' decisions will rest on detailed knowledge, original contribution, and literary merit.

Each essay shall contain more than 6,000 words, exclusive of quotations. It must be typewritten in five copies sent to The National Director, The Thomas Jefferson Society of The United States, Hancock, New Hampshire. The deadline is February 1, 1962. Winners will be announced April 15.

Students who are interested in entering the contest may contact Mr. Tucker for detailed information.

## Tau Sigma Initiates 13 New Members

Thirteen students were formerly initiated as new members of Tau Sigma, honorary educational fraternity, January 6.

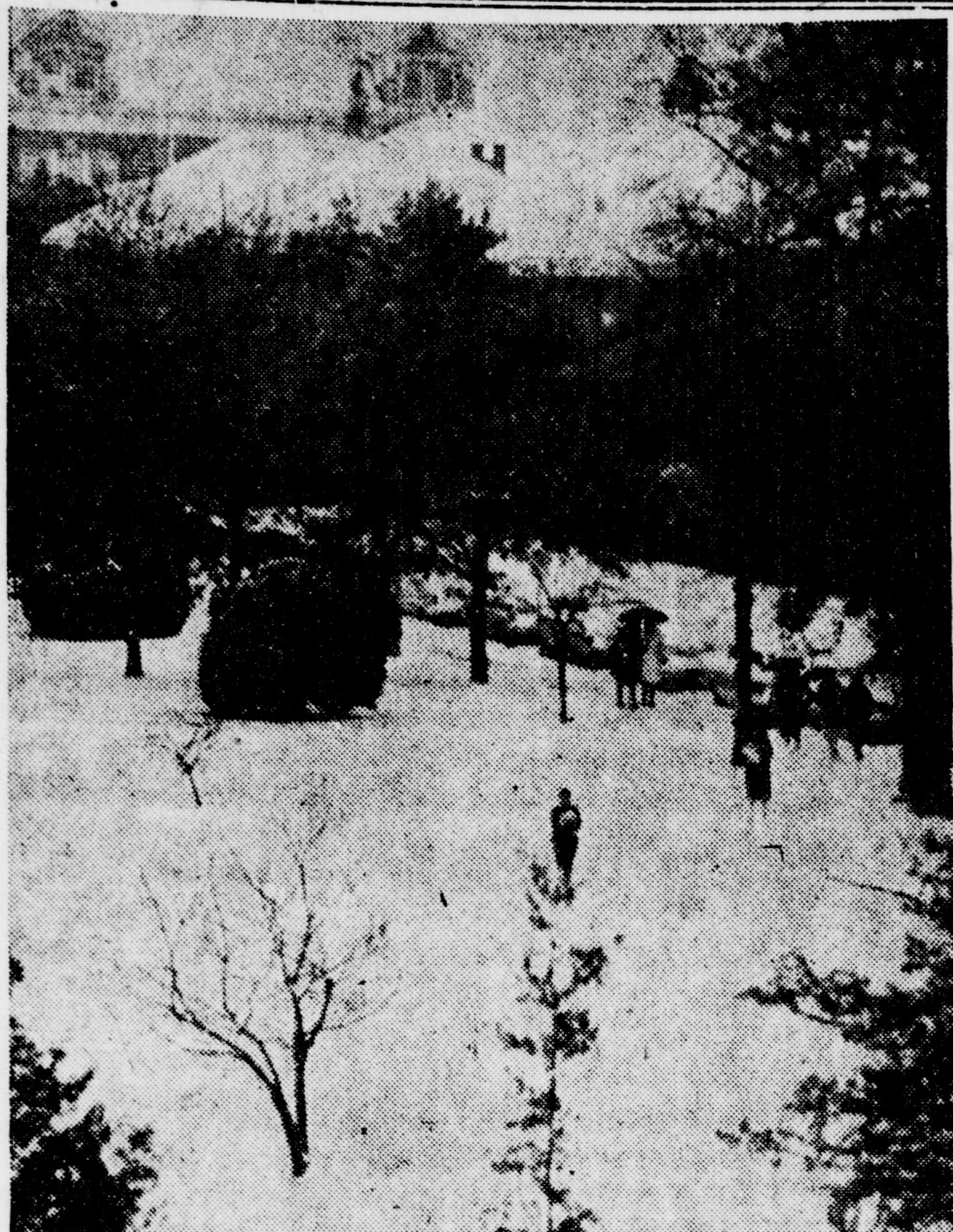
Featured speaker at the initiation dinner meeting was Dr. John Horne, Registrar and Director of Admissions.

Newly initiated members of Tau Sigma are Norma F. Bright, Judy Comer, Ken Congleton, Rhonda Dandiker, Linda Flowers, Virginia Griffin, Roland Norris, Judy Payne, Brenda Painter, Martha Price, Lois Robinson, Mary Virginia Stallings, and Judy Underwood.

## 'Buc Goat'



Tugger Tugwell, was one of the many "Buc Goats" who found time from studies to dress in "winter finery for the elite" and tumble helpless coeds in the snow. Looks pleased with himself, doesn't he?



FAMILIAR SURROUNDINGS . . . at least they were before the snowy flakes gave the campus a "new look" similar to a Currier & Ives Christmas card.

## State Department Offers College Student Summer Jobs

An exceptional ECC student may be chosen to fill a position with the U. S. Department of State this summer.

The State Department has established a summer intern program for college-trained young people interested in the conduct of foreign affairs.

Under this program 25 colleges and university students will be selected for summer work in the Department of State in Washington on the basis of background and interest.

### \$336 Per Month

The student selected will be appointed at the GS-4 level with a salary of \$4,040 per annum and will serve from June 15 through August 30.

One student will be chosen as the college's nominee. He must submit a 500 word essay with his application to be sent to the State

Department by March 1.

The nominee must be a citizen of the U. S., at least a junior, and have a B average or better. He must have a modern language proficiency or be in the second year of a modern language course. Effective writing ability and interest in a career in the field of foreign affairs are essential.

Any qualified and interested student should contact Dr. James H. Tucker, Dean of Student Affairs immediately.

## Audio-Visual Meet Scheduled

Our campus will be the meeting place for a hundred superintendents, supervisors, principals, and audio-visual co-ordinators, Thursday, January 18.

Twenty-two Eastern North Carolina public school administrative units will be represented at the all day session of discussions and demonstrations of communication materials useful for instructional purposes.

The workshop, sponsored by the North Carolina Committee on New Educational Media, is one of six scheduled from November, 1961 through April, 1962. Two sessions, with emphasis on classroom communication and visual aid, have been arranged for the program.

Mary Thomas Smith, supervising teacher at the Wahl-Coates Laboratory School, is chairman for the regional workshop.

Starts WEDNESDAY, Jan. 17

There Never Has Been A

Funnier Comedy!

**'BACHELOR FLAT'**

In Color -- Starring TUESDAY WELD

PITT Theatre

## Vogel, Burns Schedule Senior Music Recital

On Thursday, January 18, Marcelle Vogel and Jim Burns will present their Senior Music Recital at 3:00 p.m. in Austin Auditorium.

Marcelle, clarinetist and student of Mr. Herbert L. Carter, will present the following selections: "Sonata in F Major", adagio, and allegro, by Handel; Rondo Allegretto from "Sonata for Clarinet and Piano", by Wanzhal; "Le Petit Negre", by Debussy; and "Two Duets", by Hindemith. On the latter selection she will be assisted by Janet Wurst.

Betsy Orr, student of Mrs. Toll, will be her accompanist.

Jim "Scooby" Burns, trumpet student of Mr. Barry Shank, will perform the following: "Concerto for Trumpet", by Giannini; and "My Spirit Be Joyful", by Bach. Assisting him on the latter num-

ber will be Dale Blackwell, trumpet; and Ted Gossett, Organ.

Jim is accompanied by Rise Lindsay, graduate assistant.

Marcelle has been a member of the newspaper staff since she has attended East Carolina. She has also played in the College Bands and Orchestra, and has been a member of the College Choir. She is a member of Kappa Delta Sorority, and was recently selected as "Who's Who Among College Students in American Universities and Colleges."

Jim has been active in the music organizations on campus, being a member of the College Concert Band and Marching Band of which he was drum major. He has also performed in the College Orchestra and Choir, and is a member of Phi Mu Alpha, professional music fraternity. Jim is also leader of his own dance band, the Jimmy Burns Orchestra, which he formed this year.

## Methodist Youth Hold Conference

"The Church: Master's Mission, or Man's Mistake" will be the theme of a state conference of the Methodist Student Movement at High Point College, January 26-28. The three-day conference is to take place at Wesley Memorial Methodist Church.

### Students Invited

The conference is open to college students and nursing students who participate in units of the Methodist Student Movement, college presidents and chaplains, Women's Society of Christian Service, district secretaries of student work, pastors, and interconference commission members. Representatives of other denominations will also be present.

### Prominent Speaker

Guest speaker is to be The Rev. Jameson Jones, teacher at Garrett, the Methodist theological school at Evansville, Ill. The Rev. Mr. Jameson edited "Motive," the Methodist Student Movement magazine, for three years. He was president of the National Conference of Methodist Youth for two terms. Graduated from the University of Kentucky, Garrett and Vanderbilt, The Rev. Mr. Jones was one of the main speakers at the June session of the Western North Carolina annual conference.

The conference is being sponsored by the Interconference Commission on College and University Religious Work of the Methodist Church, through the Methodist Student Movement of North Carolina.

## EC Credit Union Declares Profit For Past Year

A dividend of 4½% for stockholders has been declared by the East Carolina College Credit Union.

Announcement of this distribution of profits for the year 1961 was made by Treasurer John Davis at the annual stockholders meeting of the Union which was held Saturday morning, January 13, in Austin. This marks the completing of the first full year of operation of the organization that was founded in May, 1960 with twelve members. At present there are 120 members and \$9,000 available for loans by faculty and staff members.

At the meeting, which was presided over by Dr. Ralph Brimley, Credit Union president, it was pointed out that in addition to paying dividends through earnings, the Credit Union also insures the life of each shareholder for the amount that he has in shares, as well as insuring his loans, so that in the event of his death repayment would not have to come from his estate.

The office of the Credit Union is located in the Mamie Jenkins Faculty-Alumni Building. All full-time employees of the College are eligible for membership. There is no provision for membership by ECC students.

## JANUARY CLEARANCE SALE

Men's and Women's Winter Merchandise

REDUCTIONS UP TO

**50 % OFF**

"Student Charge Accounts Invited"

*The College Shop*

222 E. 5th Street



## SPORTS REVIEW

By RICHARD BOYD



EC's basketball team does not return home until January 26, when the Bucs take on Western Carolina's Cata-mounds. This is a considerable time away from the home court for East Carolina, in that the last home game was the Elon contest which was won 67-65 by EC. Buc fans have seen their team in action at home only three times during the campaign, and Coach Smith's fine five responded with two victories in the three contest.

Until Saturday night's encounter with Lenoir Rhyne, EC had compiled a respectable 7-5 mark overall, and 4-2 record in league competition. Charlie Lewis was well out in front in the team scoring average, as the Kinston native was credited with a 17.5 scoring average per game. Bill Otte, with a 12.7 average, and Ben Bowes, with a 11.1 average were other Bucs averaging in double figures.

Speaking of Lewis, and his tremendous performance was something that most EC basketball followers anticipated. Charlie is a fine person on and off the court and one of the greatest team players that EC has had the fortune of having during the past several seasons. The Kinston native's ability on the court is aided by his one hundred per cent effort that he gives the team every game.

Actually, East Carolina's 1961-62 quint seems to be playing together better than most EC fives of the past. There is no great star, although Lewis has really been putting in his bid for all-conference honors. Ben Bowes from Burlington, is a 6-5 senior, and Co-Captain with Lewis. He is a good shot close to the basket, and a fine rebounder, as he utilizes his height to great advantage. Bill Otte, from New Jersey, is a 6-6 powerful man under the backboards, and Bill usually hits with consistency, as proven by his respected 12.7 scoring average.

Lacey West, from Asheboro, who also specializes as a good baseball player, is hitting close to 10 points per game. Lacey is usually a late starter, when it comes to getting the points. The 6-3 forward is a junior and is in his second year as a Buc starter; Lacey played considerably his freshman season. Two Buc freshmen with good promise are Richard Williams and Bill Brogden. Both have had nights when they have hit in the twenties in the scoring column. Neither player is tall, but both boys can hit good from the outside. Brogden is one of the better all-around players on the team, while Williams hits the nets effectively with either hand.

Dan Bowen, Russ Knowles, and Mal Boyette are the top reserves that Coach Smith depends a great deal upon. In fact, Bowen has started a few of the Pirate contests. One of the better shots on the team, Danny is handicapped by his lack of size; but being only 5-9, Danny is a scrappy competitor, who works good with the team. Knowles and Boyette are both tall and can hit the basket with effectiveness. Both players are over 6-3, with Boyette weighing over 200, and being one of the better rebounders on the team.

These Pirates have been improving as the year has progressed; A two game road trip proceeds the battle with WCC at home January 26. The Bucs have knocked-off three highly rated teams in Richmond, Lenoir Rhyne and Elon. Their 4-2 record before the game with LR Saturday night was a respectable one that placed the Bucs as one of the definite title contenders.

### Free Coaching Contributes To High Standard Of Play

## Charles Holliday Wins Table Tennis Finals

Charles Holliday won three straight games defeating Bowie Martin in the finals of the "Snow-bound" Open table tennis tournament held at the Greenville Table Tennis Club.

The tournament, held Saturday, January 13, was the first of its type to be held in Greenville. Holliday, who won the Men's Singles by defeating Martin, took double honors for the day by also teaming with Nelson Tugwell to defeat Fleetwood Lilley and Phil Somers in the doubles event.

Freshman Mike Harris won his

first tournament and trophy by easily defeating fellow freshman Jimmy Deason in the finals of the Novice event.

"It was evident that the calibre of play by the ECC students is again on the rise," noted Games Committee Chairman, Bowie Martin.

The club has four tables and free

coaching each night, and has been a major factor in many of the new players' fast rise in ability.

"The free coaching at the club and the new tables, combined with the table tennis facilities available in the College Union, and those in "A" dorm, should contribute to an even higher standard of play," continued Martin.

### Wallet Lost

A black ladies wallet has been lost by Mary Jo Lancaster. Anyone finding the wallet can contact Mary Jo through box 1438 or at 212 Garrett Hall.

## Greenville Table Tennis Club Holds First League Play

Greenville Table Tennis Club secretary Fleetwood Lilley has announced that the first league play of the season was held Thursday night, January 11 at the newly opened club at 815 B Dickinson Avenue.

League play is held every Thursday night and starts at 7:15. Players of all degrees of ability enjoy a night of fun and relaxation while participating in league competition.

Local players desiring to join the league may do so by meeting at the club on Thursday night prior to the starting time, or by coming up to the club during regular hours (7:00 to 11:00 p.m.) during the week. Players of all abilities are welcome.

First week standings:

1st—Team 7—Av.—666. Cap. Phil Somers, Melba Martin, Charles Holliday.

2nd—Team 1—Av.—556. Team 1—Cap: Bowie Martin, Rick Brewer, Jim Ulrick. Team 4—Cap. Fleet Lilley, Bernie Beloff, Kenneth Harris.

3rd—Team 3—Av.—444. Cap. Nelson Tugwell, Ben Willoughby, John Pollard. Team 2—Cap. Mike Harris, Rennie Clark, Hayward Adams.

4th—Team 5—Av.—333. Cap. Stan Marin, Bill Warsham, Dick Copple.

## ECC Returns Home Next Week To Face Western Carolina

### Cagers Lose To LR Bears 58-49 Score In Away Contest

EC sought to get back into the win column last night at the expense of Western Carolina's Cata-mounds in an away contest. The Bucs were beaten Saturday night by a strong Lenoir Rhyne team. The Bears, playing on their home court where they are rarely beaten, upended Coach Smith's eleven by a 58-49 margin.

Coach Smith's crew does not return home until January 26, when the Bucs face the same WCC five that they battled last night. Charlie Lewis, Ben Bowes, Bill Otte, and Lacey West, the four Pirate veterans, continue to set the Buc pace so far during the cage campaign. Freshmen Richard Williams and Bill Brogden have continued to shine throughout the season and their sparkling play has given EC an added lift during the season.

After the LR loss, the Buc record stood at 7-6 overall, and 4-3 in league competition.

Following the January 26 contest with WCC, the Bucs hit the road the next night to battle Pfeiffer. Then the EC five returns home again January 30, to play Appalachian's troublesome Apps. Coach Smith's quint plays Southern Conference representative VPI on February 2, at Blacksburg, Virginia, but returns home February 3, to battle ACC. Catawba, Elon, Pfeiffer, High Point, ACC, and Guilford follow in that order to

end the regular Buc season, the stage for the College Tournament at Lexington.

## Jorgensen To Lead Discussion At National Meeting

Dr. N. M. Jorgensen, Director of the Department of Health, Physical Education, and Recreation, will lead a discussion for directors of athletic departments at a national meeting in Louisville, Ky., March 22 and 23.

The meeting is sponsored by the Joint Committee on Physical Education representing the American Association for Health, Physical Education, and Recreation; the College Physical Education Association; and the National State Athletic Association.

Richard C. Larkins of Columbus, Ohio, Chairman of the Committee, has announced the program will feature discussion groups for university, college divisions, which will develop the theme "The Responsibility of the Educational Values of Athletics." Dr. Jorgensen will direct discussion in one of college groups.

## Semi Annual Clearance

• A Selected Group of Suits from our regular stock ... reduced

20% to 40%

• A Selected Group of Sport Coats from our regular stock ... reduced

20% to 40%

• A Group of Topcoats regular \$50.00 Now \$37.99

• A Group of Jackets 1-2 Price

• A Group of Sports Shirts 2 for \$5.00

**Offman's**  
MENS WEAR

### STATE Theatre

"PICNIC"

STARTS SUNDAY

Kim Novac -- Dilliam Holden

WEDNESDAY

Five Golden Hours

Ernie Kovacs -- Cyd Charisse

## DELICIOUS FOOD

SERVED 24 HOURS

Air Conditioned

## Carolina Grill

Corner W. 9th & Dickinson