

East Carolinian

East Carolina College

GREENVILLE, N. C., TUESDAY, DECEMBER 5, 1961

Number 11

\$260,000 Total Exceeds Original Stadium Goal

Funds being raised to build a new stadium now stand at \$260,000. President Leo W. Jenkins announced today.

"We are pleased and grateful for the financial support given to us in Greenville and Pitt County and by alumni and friends elsewhere," Dr. Jenkins commented. "We are also grateful for the tremendous benefits accruing as a result of this demonstration of a strong partnership that exists between the people of this area and the college."

He also expressed appreciation for the recent response of the college. Since the defeat of the state Bond Issue, they have made contributions to provide the sum of \$50,000 which was included among the ten items voted on November 7 and which would have been used for preparation of the new football field and for other work on the stadium site.

The \$260,000 already collected or pledged exceeds the original goal for contributions of \$200,000 when the fund drive began October 7. Further donations are expected to be received, even though the current total exceeds the \$250,000 originally estimated as the cost of the stadium.

Work has begun on the site for the stadium. Drainage lines have been installed. When final plans for the structure have been approved, construction will begin in 1962. It is expected that the stadium will be completed before the opening game of the football season next September.

Dr. Jenkins, discussing the new stadium, said that it will be "a center of activities not only for the college but for all of Eastern North Carolina." It will provide accommodations not only for athletic events but also for student convocations, citizens' rallies, outdoor sports, dramas, and musical performances; and public meetings of national significance, he said.

Chaperones Defunct at Dances

Monday evening the Student Government approved, as a recommendation to Dr. James Tucker, chaperones will not be required at SGA dances following the new policy in Wright Auditorium. The motion further stated that no chaperones will be required. This motion was recommended by the Council of the SGA.

The item discussed was the SGA supported organization to follow the SGA requisition order system. The SGA voted to withdraw the requisition if they failed to follow correct procedures. After much discussion, the motion was approved that the auditorium not be used for dances to practice their musical instruments.

Dr. Anderson, President of the SGA, announced to the SGA that he was resigning his position. He wishes of 'Uncle Sam'.

Stasavich Fills Vacancy

College Athletics Gain Outstanding Grid Mentor

By BILL GRIFFIN.

Clarence Stasavich, former football coach at Lenoir Rhyne College, has been hired as head football coach by East Carolina, President Jenkins announced last Monday.

Stasavich will fill the vacancy created when former coach Jack Boone was reassigned to a full time teaching position. He will begin his duties on January 1, 1962, for an annual salary of \$12,000. He will receive \$7,500 of this amount for work as a teacher in the department of physical education and the balance for his work as head football coach. No length of contract has been stated.

With his move to East Carolina, Stasavich ends a 16-year stay at Lenoir Rhyne, where he compiled one of the most outstanding records in the nation and led the Bears to nine championships in the Carolinas Conference, formerly known as the North State Conference.

Last year his Lenoir Rhyne team captured the National Association of Intercollegiate Athletics small college championship. The year before Stasavich was named NAIA coach of the year. He has also been elected to the Helms Athletic Foundation Hall of Fame. Stasavich employs the single wing type of offense and has

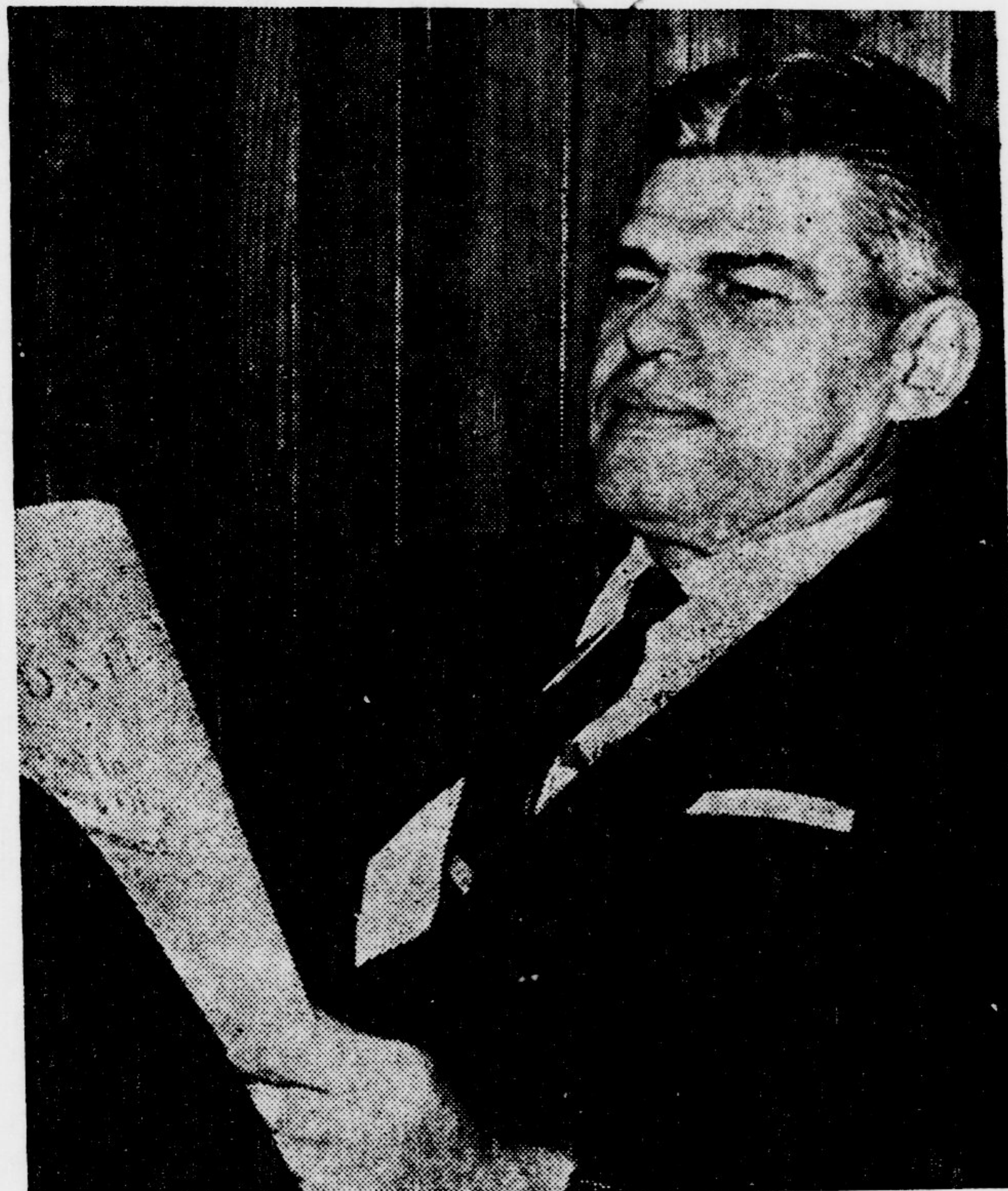
used it throughout his career to earn a record of 120-26-7. Of this type of attack he says, "I believe in offensive football and I think the single wing is the best way to move the football. I think more in terms of offense than I do in terms of defense."

Stasavich, originally from Georgetown, Illinois, received his B. S. degree from Lenoir Rhyne in 1935 and earned his M. A. degree at the University of North Carolina.

His first coaching position was at Campbell Junior College. After three years at Campbell, he enlisted in the Navy. On being discharged, he returned to Lenoir Rhyne as an assistant coach for four years and was appointed head coach in 1946.

Although football is his main claim to fame, Stasavich is also known for his work in the classroom and his interest in community affairs. When at Lenoir Rhyne, he was much in demand as a banquet speaker.

Here at East Carolina, he will have three associate coaches. They will be Sal Gero, Odell Welborn, and Ray Pennington, all of whom are presently on the coaching staff. Athletic Director N. M. Jorgenson said that there is a possibility that a fourth coach will be named later.



Clarence Stasavich

Sorority Presidents Brief 200 Prospective Winter Rushees

By CATHY SHESSO

Approximately 200 prospective rushees filled Austin Auditorium last Wednesday for the sorority convocation. The meeting was a kick-off for formal rush in January.

Rushees were briefed on the benefits of sorority life. Speakers for the evening were presidents or representatives of each sorority on

campus; Dean Ruth White, advisor to Panhellenic; and Mary Nell Shaw, president of Panhellenic Council.

Representing the sororities were: Ray Lane, president of Alpha Delta Pi; Kay Faucette, president of Alpha Phi; Janice Sessoms, Alpha Omicron Pi; Patsy Alexander, president of Alpha Xi Delta; Betty Hope Lane, president of Chi Omega; Judith Berry, Delta Zeta; Susie Street, president of Sigma Sigma Sigma; and Katherine Raynor, president of Kappa Delta.

Each representative enumerated several aspects of Greek life and explained the history of her sorority and its national and local objectives.

Dean White told the rushees several assets of being a Greek. Following the meeting she noted, "The turnout was very satisfying, and there are more girls than had been expected."

Red Cross Asks 200 Pint Quota

The Red Cross Bloodmobile will be on the East Carolina College campus at Wright Building, December 6, from 11:00 a. m. until 5:00 p. m. The quota for East Carolina College is 200 blood donors.

Dean James Mallory stated, "We, at East Carolina College, feel that the college can lead the way in getting the blood quota for Pitt County. From the many students attending the college, we should certainly be able to get 200 blood donors."

Any student in good health may give blood provided he or she is at least 18 years of age, weighs approximately 110 pounds or more, has not donated blood within the previous 8 weeks, has not had malaria within the past 2 years, or does not have a history of viral hepatitis (jaundice).

Written consent of a parent is required for donors between the ages of 18 and 21, unless they are married. Members of the SGA, ROTC and the fraternities and sororities will be distributed consent blanks prior to December 6, to mail to parents.

The widely acclaimed Columbus Boychoir of Princeton New Jersey, will appear in concert in Wright Auditorium at 8:15 p.m. on December 8. Doors will open at 7:15 p.m.

'Circuit' Poet Appears Tonight

Garrett Holds Reading

By JEAN PEACE

Tonight George Garrett will meet with East Carolina students in an informal poetry reading.

Garrett comes to EC through the recently organized "Poetry Circuit," which is under the sponsorship of the UNC Press in conjunction with the New York City Poetry Center.

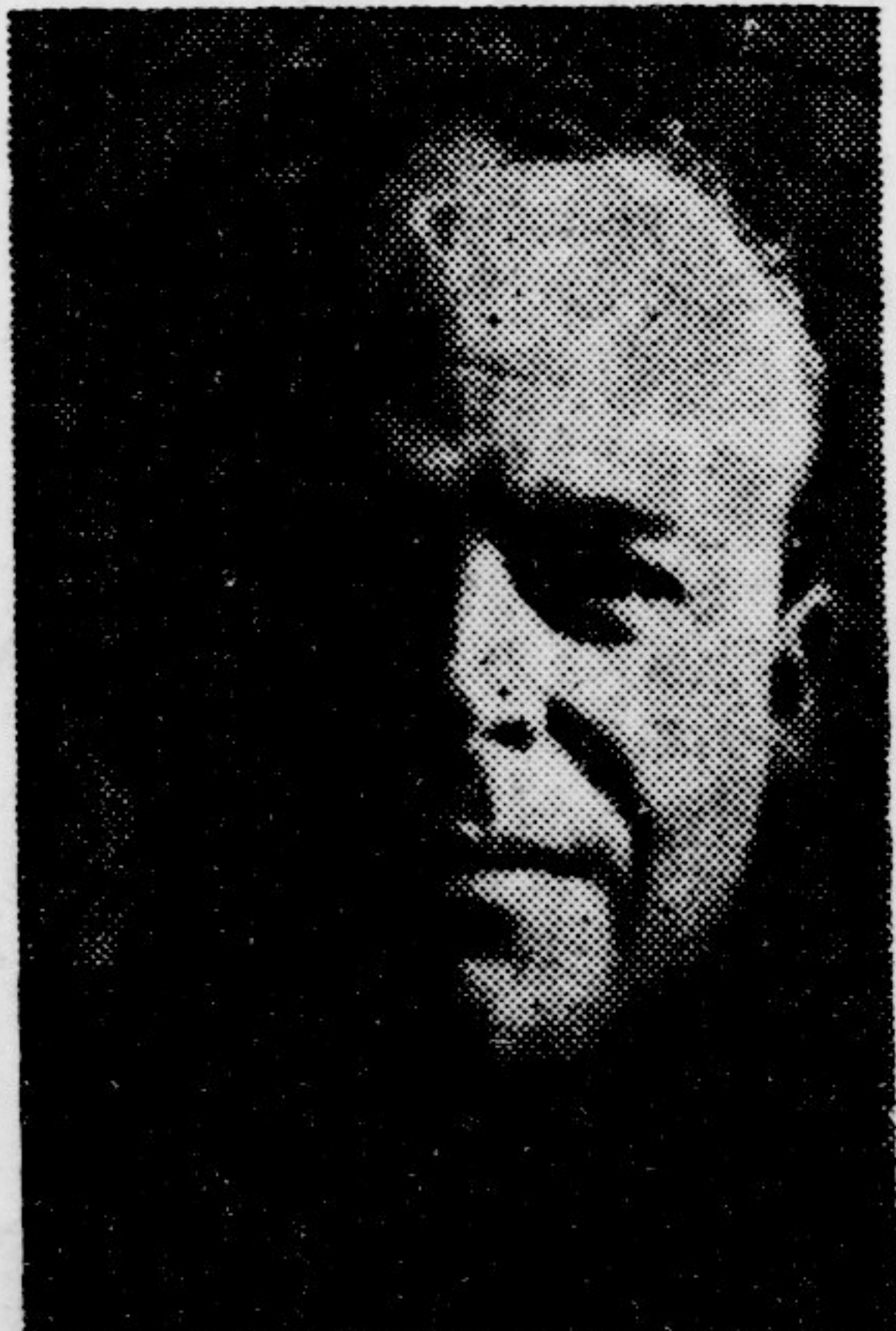
Garrett is a graduate of Princeton and has worked as a football coach, prospector for Texaco, bartender, soldier, college professor, and poet. At present he is a member of the faculty at Rice Institute in Texas. In 1959 he won the Grand Prix de Rome and the Sewanee Review Fellowship. He has been sponsored by a Ford Foundation Fellowship for study at the Alley Theater in Houston.

Garrett has published two novels, a book of short stories, three collections of poetry, the latest of which is "Abraham's Knife," and is the current poetry editor for the "Transatlantic Review."

Dr. James Poindexter heads the EC faculty committee arranging for Garrett's visit here. Ovid W. Pierce and Dr. Katherine White are serving on the committee with Dr. Poindexter.

Although the "Poetry Circuit" will subsidize young poets, the main purpose is to bring young poets and young audiences together. "Two young poets will visit the member schools each year," announced Howard Webber, director of the program and editor of the campus newspaper at UNC. Seven colleges in North Carolina

and one in Virginia are participating in the circuit program. Garrett will represent his poetry at each of these colleges within the next week. Participating schools are



George Garrett

UNC, State College, Womans College, Davidson, Wake Forest, Duke, East Carolina, and Hollins College in Virginia.

Garrett's poetry reading is scheduled for tonight at 7:30 p.m. in Austin Auditorium.

Float Symbolizes Stadium Appreciation

The student body was represented in Greenville's Christmas parade today at four o'clock.

The float, made in the shape of the James S. Ficklen Stadium, showed EC's appreciation for the Greenville citizen's interest and support during the stadium drive. Bill Eyerman headed construction of the float for the SGA.

NPC's Erroneous Decision Halts Sorority Progress

National Panhellenic Council made an erroneous decision several weeks ago when it extended the "no housing agreement" at East Carolina to cover the next four years. According to the agreement, seven EC sororities will not be allowed to buy or rent a house until this four year period is up.

Exactly what the reasons were for extending the agreement . . . we are not sure. Reports have stated that East Carolina women are not ready for sorority houses. This is absurd. Some fraternities on campus procured houses only months after they became nationally affiliated. To date none of them have been forced or found it necessary to give up their houses.

One sorority has shown the absurdity of this notion by successfully occupying a house since last Spring Quarter. For an example of the readiness of sororities, we need only note how well organized all eight of them have been since they first originated and first became nationals.

Progress in the sorority system at East Carolina will be stunted tremendously if this agreement is kept. What if the fraternities here had been bound by such an agreement . . . no houses for six years following national affiliation?

The ideals of brotherhood and sisterhood cannot be realized through short weekly meetings. Seven sororities now share an inadequate meeting room in the basement of Fleming dormitory where for an hour and a half each week they are supposed to transact all business and plans for various projects, etc.

The same sororities store rush and initiation equipment in inadequate cabinets in this room. Without houses, these groups must manage storage of secret materials and equipment which all Greeks have. We also understand that East Carolina women cannot afford sorority houses. Here again, we have a contradictory example right before our eyes. Surely sorority women here can afford houses as well as fraternity men. This idea from NPC is completely off base.

Sororities have the support of the college administration in purchasing houses. The staff is anxious for sororities to progress along this line . . . in keeping with the "key note", progress, at East Carolina. Then, too, would it not ease overcrowded dormitories to have some 250 women living in houses, This would make an entire dormitory such as Ragsdale, Fleming, Jarvis, or Wilson available to house coeds.

Sororities have been planning and preparing to acquire houses. No one could be more anxious . . . and now disillusioned at this latest decision of NPC than the sorority women, themselves.

How then, can this agreement be dissolved? Those sororities who wish to buy or rent a house immediately should work together, collaborate with their nationals in seeking approval, and together break the agreement, and thus, pave the way for those sororities that are still formulating plans for a house.

EC Deeply Grateful . . . Appreciative

Citizens Heal Bond Injuries

The overwhelming response of the citizens of Greenville to the James S. Ficklen Stadium fund finds us deeply grateful and appreciative. Meeting our first goal of \$200,000 would have been impossible without the support of the people in Greenville and Pitt County.

With the defeat of the November 7 bond issue, people in this area and various friends of the college responded to compensate for the \$50,000 lost with the election and needed to round out the necessary stadium funds. Not only did they meet this second goal, but they surpassed it by \$10,000. Although \$260,000 has been collected or pledged, further donations are likely to be received.

One man has worked untiringly for the realization of a new stadium . . . President Leo W. Jenkins. Much can be attributed to President Jenkins for the success of the stadium drive. In working with the Steering Committee, he set out to reach a goal and now can feel confident in the results of his efforts.

East Carolinian

Published by the students of East Carolina College, Greenville, N. C.

Member
Carolina's Conference Press Association
Associated Collegiate Press

| | |
|--|---|
| Patsy Elliott EDITOR | Keith Hobbs BUSINESS MANAGER |
| Managing Editor Monty Mills | Associate Editor Marcelle Vogel |
| Sports Editor Richard Boyd | Feature Editor Jean Peace |
| News Editor Donna Bingham | Campus Editor Bill Griffin |
| Review Editor George Gardner | Cartoonists Jay Arledge, Larry Blizzard |
| Photographer Skip Wamsley | |

Campaign Requires Student Minds, Money, And Time Fund Urges Student Commitment

By BETSEY WILLIAMSON

Money, time, and minds are urged for commitment by students throughout the nation to the Southern Students Freedom Fund. OBJECTIVE: fund raising campaign to meet the long range needs in the effort to attain civil rights for Negroes.

The SSFF campaign is a program of the Student Non-violent Coordination Committee. The SSFF was officially established on October, 1961 following the incidents in McComb, Mississippi which received nation-wide coverage and provided an example of the situation which dramatizes the problems in the South.

SNCC predicts a rise in needed funds next year, as the voter registration campaign hits high gear. voter registration resistance is expected particularly in Alabama, Mississippi, and South Carolina, the three states which have not so far taken efforts to integrate their schools.

SNCC personnel in the McComb area have already been harassed, beaten, and, most recently, shot at as they attempted to bring voter registration to the Delta counties on the Mississippi. As the campaign reaches other areas, arrest and beatings will become more frequent. Thus campaign needs will include a large amount of money readily available for bail, legal fees, travel costs, and, possibly, hospitalization and doctor fees.

Campaign Goal \$100,000

So far, the following seven organizations have pledged active participation: Americans for Democratic Action, Northern Student Movement Coordinating Committee, Students for a Democratic Society,

US National Student Association, Young Christian Students, Young Democrats and Young People's Socialist League. The World University Service has agreed to act as sponsor.

Four Phase Drive

The drive will be in four phases: (1) a crash program designed to raise \$5,000 to meet SNCC's immediate needs, this step is presently in process. (2) organizers will travel throughout the country to meet with campus and community groups and set up local campaigns, currently being organized. (3) actual fund raising campaigns by local groups. (4) a follow-up campaign in areas which were not reached or were unable to participate in the campaign.

Also work has begun on the itineraries for the organizers, and scheduling concerts and various public meetings.

Another important phase of the

campaign will be educational. many non-Southerners know about the South and its problems. However, there can be no successful movement in the South without the sympathy and support of people all over the country.

This campaign will not be easily or quickly accomplished. Nevertheless, the campaign is begun as the orientation of PURPOSE: to bring about a revolution which will remove explicit and implicit restrictions of the Negro.

The Negro seeks to be heard, obtain the right to work, and live with equal social status.

EC Now Member Of College Exam Board Association

Edward Nicholson, Director of Testing, announced that EC is a member of the College Examination Board.

Requirements for members include using one of the Board testing programs and being credited by the appropriate regional association.

Board membership entitles college to send representatives to Board meetings or to take part voting on matters of policy.

The College Board is a nonprofit organization composed of 350 colleges and universities, secondary schools and 38 educational associations.

The Board's activities include administering various college entrance exams, sponsoring numerous research projects concerning testing and psychology, and supporting the College Scholarship Service. Its newest activity, offering advanced placement programs, enable students to undertake college-level work in a secondary school. It also publishes informational guidance materials.

The college Board was set up to provide direction and research which will make easier the transition students must make from secondary schools to institutions of higher learning.

WWWS Features New Programming

Last week Campus Radio, WWWS, began a new quarter of operation on both AM and FM facilities.

Many changes in programming have been made which will be announced at a later date.

Students may listen at 570kc on the immediate campus and on their FM radios within a hundred mile radius at 91.3mc.

The staff of the station, headed by Jerry Winberry, is composed of college students.

Struggle For Leadership Follows Rayburn's Death

By JEAN PEACE

Two struggles for leadership are now in progress in the US Congress. Sam Rayburn, 21 year House leader, died leaving a powerful position open for debate. Within ten days after Rayburn's death, Senator Styles Bridges died in his sleep. Now the Republicans are seeking a new leader in the Senate.

With the passing of two key politicians, the fight is on. McCormack, a 69-year-old Democrat from Boston has held the number two post in his party in every Democratic Congress since 1940. Until recently no one had challenged McCormack's position. Albert Rains, 59-year-old Alabama Democrat let it be known he is challenging McCormack for the speaker's post. Bridges' death may open a liberal-conservative party quarrel. The problem at hand is to appoint a successor for his remaining term. Republican Governor Wesley Powell has been the frequently mentioned successor, but Bridges' wife is also a likely appointee.

Questions of Congressional posts will be settled by January 10, when the 87th Congress convenes for its second session. The settlements will not be made without fiery controversy.

Will the successors fill the vacancies as they were once occupied? Mrs. Eleanor Roosevelt commented, "Mr. Rayburn's gavel was always authoritative. It will be many a long year before people will cease to miss his presence . . . we hope that his example may inspire many others."

Former President Eisenhower

stated, "In his (Bridges') death the nation has suffered an irreparable loss."

Both Rayburn and Bridges were considered "middle-of-roaders." It is the general opinion of leading Congressmen that these two men supported the best policies, at times disregarding parties entirely. They were men who guided and directed legislation. Is there ever a replacement for a statesman?

LITTLE MAN ON CAMPUS



I'M STUCK ON A HOMEWORK PROBLEM, FREDA, - COULD I STOP BY AND SEE YOU FOR ABOUT 15 MINUTES?

Faculty Members Receive Promotions

Holt Announces Professorships

Seventeen faculty members have recently been promoted to professorships.

Dean Robert L. Holt announces the newly appointed professors of various departments as Dr. Tora Lomen, Dr. William H. Durham, Dr. W. W. Howell, School of Business; Dr. Mary Lois Staton, Education; Dr. Francis Adams, Dr. George Cook, Dr. Elizabeth Utterback, and Dr. J. A. Withey, English; Dr. Francis Pyne, Health and Physical Education; Dr. Thomas J. Harwood, Industrial Arts; Herbert L. Carter and Dr. Edmund Durham, Music; Dr. Mary Helms, Dr. Catherine Wilton, J. O. Derrick, and Dr. Frank Eller, Science; and Dr. John Howell, Social Studies.

Associate Professors

Promoted from assistant professors to associate professors are Dr. Leon Jacobson, Francis Lee Neal, Wesley Crawley, and Metz T. Gordley, Art; Alton Finch, School of Business; Dr. Rachel Kilpatrick, Dr. Francis Winkler, Dr. Hermine Caraway, Dr. Robert Rickert, and Dr. Katharine White, English; Mrs. Marguerite Perry, Foreign Languages; Miss Nell Stallings and James Mallory, Health and Physical Education; H. B. Monroe, Industrial Arts; John B. Davis and Milam Johnson, Mathematics; Donald Hayes, Gordon Johnson and James Parnell, Music; Dr. Ruby Bliss, Psychology; Dr. Shepard M. Faber and Dr. Clifford Knight,

Science; Dr. Herbert Paschal, Dr. Charles Price, and Dr. Lala Steelman, Social Studies; and Dr. Corinne Rickert, Director of Closed-Circuit Television.

Assistant Professors

Instructors promoted to assistant professorships are Donald Sexauer, Art; William Hart, Miss Francis Daniels, Mrs. Thadys Dewar, and Gorman Ledbetter, School of Business; Mrs. Louise Adams, Mrs. Antoinette Jenkins, and Mrs. Lena Reynolds, English; Odell Welborn, Miss Lorraine Graff, and Wendell Carr, Health and Physical Education; Oscar Brannon and Mrs. Mildred Derrick, Mathematics; Ralph Napp and Herbert Carlton, Social Studies.

Art Department Displays National Exhibition Of Prints

The Eighteenth National Exhibition of Prints is now on display in the Hallway Gallery in Rawl building. The Department of Art is sponsoring approximately fifty selected works from the Eighteenth National Exhibition of Prints which is circulated by the Library of Congress.

The exhibits in the show include etchings, serigraphs, engravings, wood cuts, acquaints, and works in mixed media. The prints consist of

a wide variety of abstract in color and in black and white. Some of the artists are considered the leading printmakers in this country, among them Letterio Calapai, director of Intaglio Workshop in New York City, who conducted a seminar for East Carolina art students on November 7.

A number of the prints have been chosen by the Pennell Fund Committee for the permanent collection of the Library of Congress.

'East Carolinian' Editor Announces Twice-Weekly

Following approval by the Publication Board, the East Carolinian debuts with this issue as a twice weekly. For the Winter Quarter, the Publications Board approved a twice weekly on a trial basis.

For this experiment, the staff will remain unchanged with a few minor exceptions. Salaries for the editorial staff will be unaffected by this change.

East Carolinian Editor, Patsy Elliott, has announced the different news deadlines. News for the Tuesday edition must be in the news office by 5:00 p.m. Friday. Only news occurring over the weekend will be accepted after this time. Weekend deadline is 5:00 p.m. Sunday.

Deadline for the Friday edition falls on Wednesday morning no later than 10:00 a.m.

The East Carolinian's first appearance was made on December 19, 1925. For 12 years it served the campus as a weekly newspaper.

This transition to a twice weekly is "an attempt to present to the campus a newspaper worthy of being published at East Carolina."

Fetsch Presents Piano Recital

On Thursday, December 7, Dr. Wolfgang Fetsch, of the Department of Music, will present a piano recital at 8:00 p.m. in Wright Auditorium.

His program will consist of the following selections: "Chromatic Fantasia and Fugue", by Bach; Sonata in E Minor, Op. 90", by Beethoven; and "Carnaval, Op. 9", by Schumann.

Other selections include: "Sonata" (1948), by Rozsa.

Dr. Fetsch has appeared extensively in recitals and concerts throughout the state. In the 1960 season, he appeared as soloist with the North Carolina Symphony Orchestra.

He has been a faculty member of the Department of Music since 1957. As a teacher of piano he worked previously with the U. S. Army Education Program for four years. He has taught in Japan, the University of Denver, and Indiana University.

Playhouse Presents Raleigh Performance

The College Playhouse recently presented "Christmas in Carolina" before the Society for the Preservation of Antiquities in Raleigh.

The performance was given at the Sir Walter Hotel during Culture Week.

Music was provided by the Men's Glee Club and pantomime by the Playhouse members.

Dr. J. A. Withey, director of the Playhouse, directed the production.

Director of Music was Charles Stevens of the Music Department.

National Teacher Exam Scheduled For February

E. M. Nicholson, Director of testing at the college, announces the National Teachers Examination February 10, 1962.

Prospective teachers in the EC area will then have the opportunity to take the test administered by Nicholson.

Application blanks and bulletins of information describing registration procedures and containing representative test questions may be obtained from Mr. Nicholson or directly from the National Teacher Examinations, Educational Testing Service, Princeton, New Jersey.

Applications must be mailed to Princeton so as to be received there not later than January 12, 1962.

Scores on the National Teacher Examinations are used by a large number of school systems and teacher education institutions throughout the country. The tests aid in evaluating the qualifications of prospective teachers.

At the one-day testing session a candidate may take the Common Examinations which include tests in Professional Information, General Culture, English Expression, and Nonverbal Reasoning.

In addition, each candidate may take one or two Optional Examinations which are designed to demonstrate mastery of subject matter in the fields in which the candidate is prepared.



"HAPPINESS CAN'T BUY MONEY"

I have asked the makers of Marlboro—an enterprising and aggressive group of men; yet at the same time warm and lovable; though not without acumen, perspicacity, and drive; which does not, however, mask their essential great-heartedness; a quality evident to all who have ever enjoyed the beneficence of their wares; I refer, of course, to Marlboro Cigarettes, a smoke fashioned with such loving care and tipped with such an easy-drawing filter that these old eyes grow misty when I think upon it—I have asked, I say, the makers of Marlboro—that aggregate of shrewd but kindly tobacconists, that cluster of hearty souls bound together by the profit motive and an unflagging determination to provide a cigarette forever flavorful and eternally pleasing—I have asked, I say, the makers of Marlboro whether I might use today's column to take up the controversial question: Should a coed share expenses on a date?

"Yes," said the makers simply. We all shook hands then and squeezed each other's shoulders and exchanged brave smiles, and if our eyes were a trifle moist, who can blame us?

To the topic then: Should a coed share expenses on a date? I think I can best answer the question by citing the following typical case:

Poseidon Nebenzal, a student at Oklahoma A and M, majoring in hides and tallow, fell wildly in love with Mary Ellen Flange, a flax weevil major at the same school. His love, he had



"Oh, foolish reaper! Why have you not told me before?"

reason to believe from Mary Ellen's sidelong glances and maidenly blushes, was not entirely unrequited, and by and by he mustered up enough courage to ask her the all-important question: "Will you wear my 4-H pin?"

"Yes," she said simply. They shook hands then and squeezed each other's shoulders and exchanged brave smiles, and if their eyes were a trifle moist, who can blame them?

For a time things went swimmingly. Then a cloud appeared. Mary Ellen, it seems, was a rich girl and accustomed to costly pleasures. Poseidon was bone-poor and he quickly ran out of money. Unable to take Mary Ellen to the posh places she fancied and too proud to tell her the reason, he turned surly and full of melancholy. Soon their romance, so promising at the beginning, was headed for a breakup. But at the last moment, Poseidon managed to blurt out the truth.

"Oh, beloved agrarian!" cried Mary Ellen, grappling him close. "Oh, proud husbandman! Oh, foolish reaper! Why have you not told me before? I have plenty of money, and I will contribute according to my ability."

Poseidon, of course, protested, but she finally persuaded him of the wisdom of her course. From then on they split all expenses according to their incomes. Rather than embarrass Poseidon by handing him money in public, a joint bank account was set up to allow him to write checks. Into this account each week they faithfully deposited their respective allowances—35 cents from Poseidon; \$2300 from Mary Ellen.

And it worked fine! They were happy—truly happy! And what's more, when they graduated they had a nice little nest egg—eight million dollars—with which to furnish a lovely apartment in Lubbock, Texas, where today they operate the local laundromat.

So you see? You too can salvage your failing romance if you will only adopt a healthy, sensible attitude toward money.

© 1961 Max Schulman

Lucre is no obstacle when it comes to popular-priced Marlboro, or to Marlboro's popularly priced partner in pleasure—the unfiltered, king-size Philip Morris Commander. Get aboard. You'll find long enjoyment for short money.

SELECT HIS or HER CHRISTMAS GIFT FROM

The College Shop

222 E. Fifth Street Greenville, N. C.

Distinctive Gift Wrapping Free

"CHARGE ACCOUNT INVITED"

THE Campus Corner

Cor. Fifth and Cotanche

Dedicated To . . .

A Young Man's Taste"

Starts WEDNESDAY

At The

STATE Theatre "Where The Boys Are"

FRIDAY Through THURS.

"Blue Hawaii"

SPORTS REVIEW

By RICHARD BOYD



Coach Boone Highly Successful At EC

One of the finest gentlemen in this part of the country has stepped down as head football mentor at EC. He put forth ten years of continuous hard labor to bring high grid fortunes to the East Carolina campus. Coach Jack Boone certainly succeeded in his mission to bring success to the football program of EC, this past season was no exception.

EC Lost Close Ones

Coach Boone was noted for having his eleven play their best against the best. It can be said that there was not any team that completely ran over East Carolina during the past season of gridiron action. For example, the Boonemen's losses in 61 varied with a small accumulation of points: WC, 7-6; Appalachian, 16-14; LR, 24-19; and Furman University, 29-8.

There were many strides during the ten year reign of Boone which improved EC's football program. He finished here with a winning record and a team in which he called, "His greatest in determination and desire."

Stasavich Brings Incredible Record To EC

Coach Boone's successor brings a record surpassed by very few in the nation to the East Carolina grid campus . . . seven championships in seven years.

However, how East Carolina will adjust to the famous Stasavich single wing formation remains to be seen. Lenoir Rhyne had the material for Stasavich to materialize into a "winner." EC has 5 to 7 veteran backs ready for 1962, and some capable offensive ends to catch the pigskin.

Stasavich's problem will be finding a good, solid tail-back who can throw and run, as well as an over-all team that can adjust to the new situation of the single wing. With terrific background, the 1962 Buc grid mentor seems to have unlimited capabilities in the coaching profession.

East Carolina will have a severe test for their new single wing formation next September, when the Bucs take on Richmond U. in Greenville. It will probably mark the use of a new stadium, a new grid "era" in East Carolina's ever expanding football program, whose next big goal is the Southern Conference.

Intramural Loop Begins

The Intramural Basketball competition is underway; play began November 29. The various teams and their schedule of play until the Christmas holidays is as follows:

Fraternity League

- 1—Phi Kappa Tau
- 2—Alpha Epsilon Pi
- 3—Pi Kappa Alpha
- 4—Sigma Phi Epsilon
- 5—Delta Sigma Phi
- 6—Lambda Chi Alpha
- 7—Alpha Phi Omega
- 8—Sigma Nu
- 9—Theta Chi
- 10—Kappa Alpha

Wednesday December 6

- 5 vs. 9 6:30
- 2 vs. 4 8:30
- 1 vs. 3 9:30

Monday, December 11

- 6 vs. 8 6:30
- 1 vs. 4 7:30
- 7 vs. 10 8:30

Wednesday, December 13

- 2 vs. 6 6:30
- 5 vs. 7 8:30
- 3 vs. 9 9:30

Independent League

- 1—Transfers
- 2—Golden 7
- 3—Almost Stars
- 4—Rinky Dinks
- 5—Country Gents
- 6—Unknowns

- 7—Foo-Foo
- 8—Phantoms
- 9—Football 5
- 10—Silver Eagles

Wednesday, December 6

- 2 vs. 4 8:30
- 1 vs. 3 9:30

Monday, December 11

- 5 vs. 9 6:30
- 6 vs. 8 7:30
- 7 vs. 10 8:30

Wednesday, December 13

- 1 vs. 4 6:30
- 2 vs. 6 7:30
- 3 vs. 9 9:30

Dorm League

- 1—New Dorm 1st Floor East
- 2—New Dorm 2nd Floor West
- 3—New Dorm 3rd Floor East
- 4—New Dorm 3rd Floor West
- 5—New Dorm 4th Floor East
- 6—New Dorm 4th Floor West
- 7—P. E. Majors
- 8—Jones Dorm 1st Floor East
- 9—Jones Dorm 4th Floor West
- 10—Team "X"

Wednesday, December 6

- 2 vs. 4 6:30
- 5 vs. 9 7:30
- 6 vs. 8 7:30

Monday, December 11

- 7 vs. 10 9:30
- 1 vs. 4 9:30

Wednesday, December 13

- 2 vs. 6 7:30
- 3 vs. 9 8:30

Diamonds For Xmas

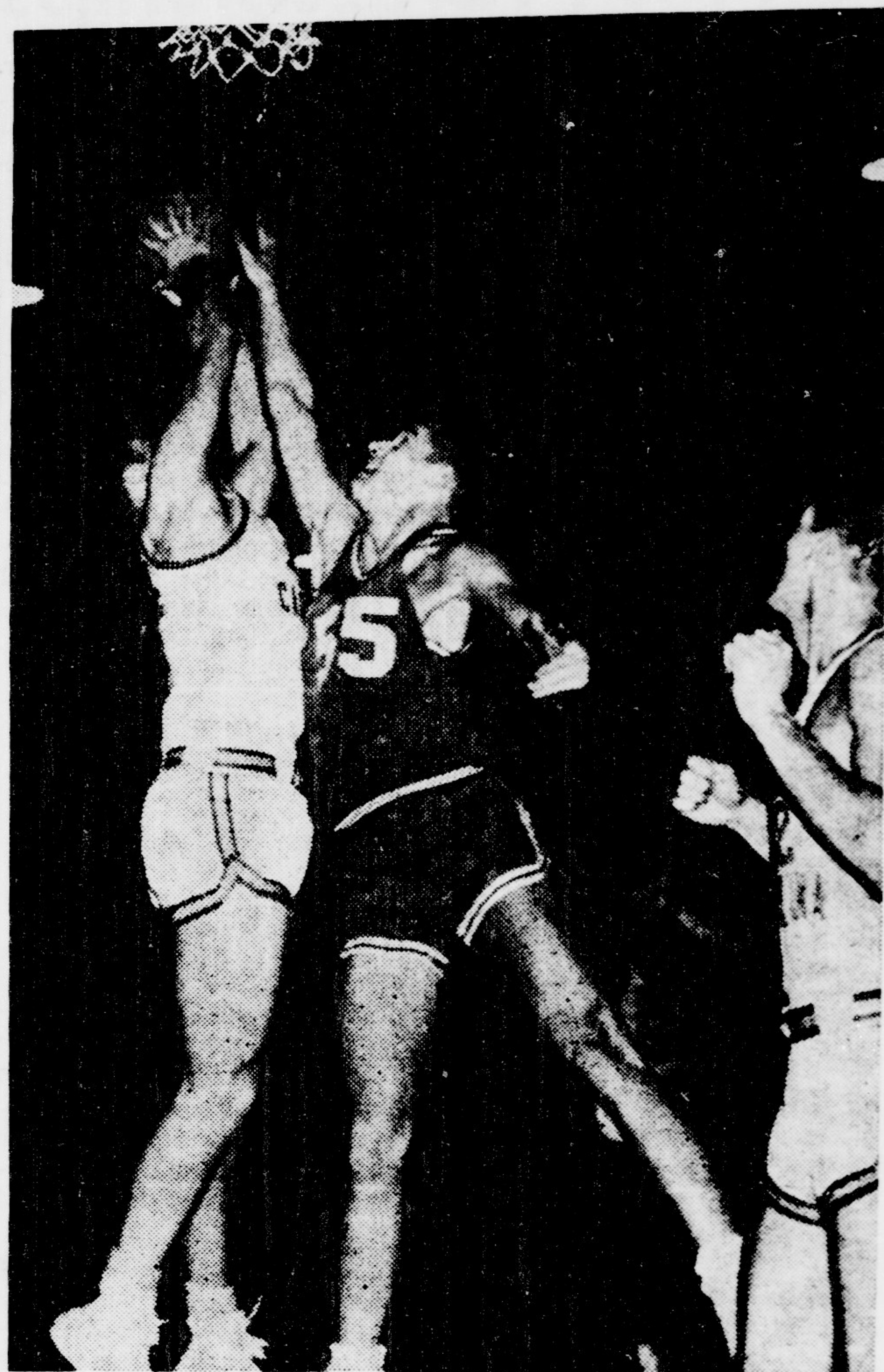
Pendants, Princess Rings, and Watches

See Our Special Christmas Selection

Lautares Brothers

414 Evans Street

Catawba Spoils Cage Opener



| Catawba | FG | T |
|-----------|----|-------|
| Dew | 0 | 3-4 |
| Johnson | 8 | 13-14 |
| Garrison | 1 | 6-6 |
| Snow | 7 | 13-14 |
| Forbis | 1 | 1-3 |
| Sessoms | 3 | 4-5 |
| Rhodes | 0 | 3-4 |
| Childress | 3 | 5-7 |
| Totals | 23 | 32-47 |

| East Carolina | FG | T |
|---------------|----|-------|
| Lowes | 5 | 4-4 |
| West | 2 | 9-11 |
| Otte | 6 | 1-3 |
| Lewis | 4 | 2-3 |
| Bowen | 2 | 1-2 |
| Williams | 6 | 10-12 |
| Boyette | 1 | 6-6 |
| Brogden | 1 | 2-2 |
| Penny | 0 | 0-0 |
| Totals | 27 | 20-33 |

By TONY KATSE

Catawba's experienced team held-off an EC rally during final moments of action to win a hard-earned 78-74 decision over the "fighting" Pirates in a game played last Friday night at the Memorial Gymnasium.

Sparked by Al Johnson and Roger Snow with 17 points, the visitors built an 8 point time lead, and were never taken by East Carolina during final half of action.

Richie Williams, a sharpshooting freshman, performed like a veteran in his first varsity role with 14 points. Ben Bowes and Bill Brogden scored 13 and 12 points respectively for the EC cagers.

SCENE of action last Friday night in Memorial Gymnasium. Catawba nipped the Bucs in their opener by 78-74.

Wrestling Team

The wrestling team has begun practice. The candidates for the Coach Welborn team are as follows: Bob Garrett, John Maldon, Jim Corbitt, Jim Rolan, Bernie Colardo, Bob Moody, Doug Ward, and veteran Robert Tugwell.

The latter has been assisting Coach Welborn with his duties. Tugwell stated, "Anyone is welcome to try out for the team this winter, whether experienced or inexperienced."

Piland, Gordon Honored

EC's two fine linemen, Clayton Piland and Chuck Gordon from Winton and Clayton respectively have been chosen for an all-conference and NAAU All-District 26 selections. Both players helped co-captain ECC to a 6-4 winning season.

Piland is a 6-1, 190 pound senior who has performed as a tackle for the Bucs offensively and defensively for the past four seasons. Bless-

ed with speed, agility, and strength, Piland is one of the better linemen in the South.

Gordon is a 6-0 200 pound senior who is married and is a veteran of the United States Army. Piland, Gordon is blessed with speed, agility, and strength. All-State candidate, the senior lineman, will go down as one of EC's all-time greats at his position.

SIC FLICS



"Every fraternity needs some kind of mascot..."

21 GREAT TOBACCOS MAKE 20 WONDERFUL SMOKES!
AGED MILD, BLENDED MILD - NOT FILTERED MILD - THEY SATISFY

