

Administration and Finance

Faculty Senate Budget Committee

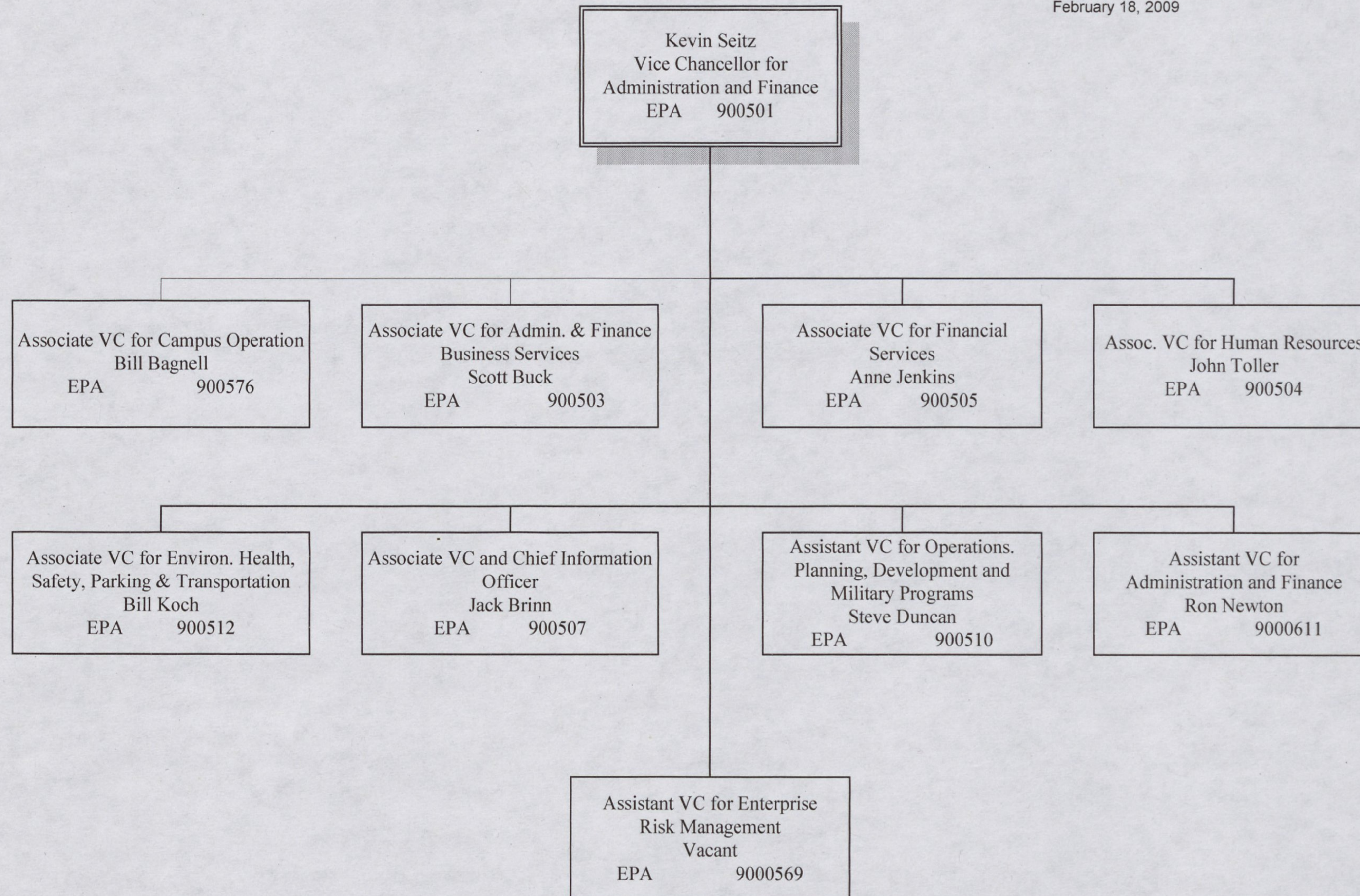
2/20/2009

Division Overview

- Over 800 employees
- Manage \$125+M budget
- Manage institutional as well as divisional funds
- Various funding sources
- Provide wide variety of services to the entire ECU community

Functional View

- Business Services
- Campus Operations
- Environmental Health and Safety
- Enterprise Risk Management
- Financial Services
- Human Resources
- Military Programs
- Parking and Transportation
- Information Technology



Administration and Finance Resource Profile

- All funds resource profile (2006/07)
 - State \$75M
 - Auxiliary \$35M
 - Endowment \$8.5M
 - Institutional trust \$1.7M
 - Overhead receipts \$3.8M
 - Scholarships, Fellowships, Restricted Professorships \$3.1M
- A & F profile includes “institutional resources” for example:
 - Utility budget
 - State endowment
 - Debt service fees and expenses
 - Capital funds

Administration and Finance Resource Profile (cont'd)

- Capital project financing
 - Obtain financing for non-appropriated projects
 - Manage state capital funds
- Significant auxiliary operations (bookstore, vending, print shop, materials management, parking, and central stores)
- Overhead Receipts (research facilities and administration) clearing account
- Auxiliary overhead
- Minor activity in:
 - restricted scholarships and fellowships
 - restricted professorships

Administration and Finance

Top 5 Funding Requirements

- **\$1.4M** Banner annual maintenance (\$280K each of the next 5 years)
- **\$2.0M** Career Banding support (250K each of the next 8 years)
- **\$1.215M** Recurring commitments paid from non-recurring funds (\$243K each of the next 5 years)
 - Annual audit charges
 - Bad debt charges
 - Credit card charges
 - Higher One annual charges
 - Voice over IP annual maintenance
- **\$500K** Reduce expenses for F & A and Auxiliary Overhead (\$125K each of the next 4 years)
- **\$250K** Implement mandates
 - Eagle
 - ERM
 - Background checks