

THE NEW SALEM  
LINCOLN LEAGUE

*Presents*



“Forever  
this Land”

A DRAMA OF LINCOLN AND NEW SALEM

The title is written in a large, elegant, cursive script. The word "Forever" is on the top line, and "this Land" is on the bottom line. The title is flanked by two single quotation marks. The background of the title area features a large, faint portrait of Abraham Lincoln, several five-pointed stars, and a small illustration of a covered wagon.

NEW SALEM STATE PARK-PETERSBURG, ILLINOIS  
SECOND SEASON-June 28 thru August 24-1952

**DRAMA...ROMANCE...HISTORY...**

# "Forever this Land"

\**Author*—Kermit Hunter, poet, musician, playwright, teacher, who also wrote "Unto These Hills" and "Horn in the West," both produced annually in North Carolina.

\**Advisor*—Samuel Selden, veteran authority on the outdoor theatre, director of "The Lost Colony" since its beginning in 1937.

\**Director*—William MacIlwinen, talented young actor and composer, who has directed such outdoor productions as "Twelfth Night" and "Of Thee I Sing."

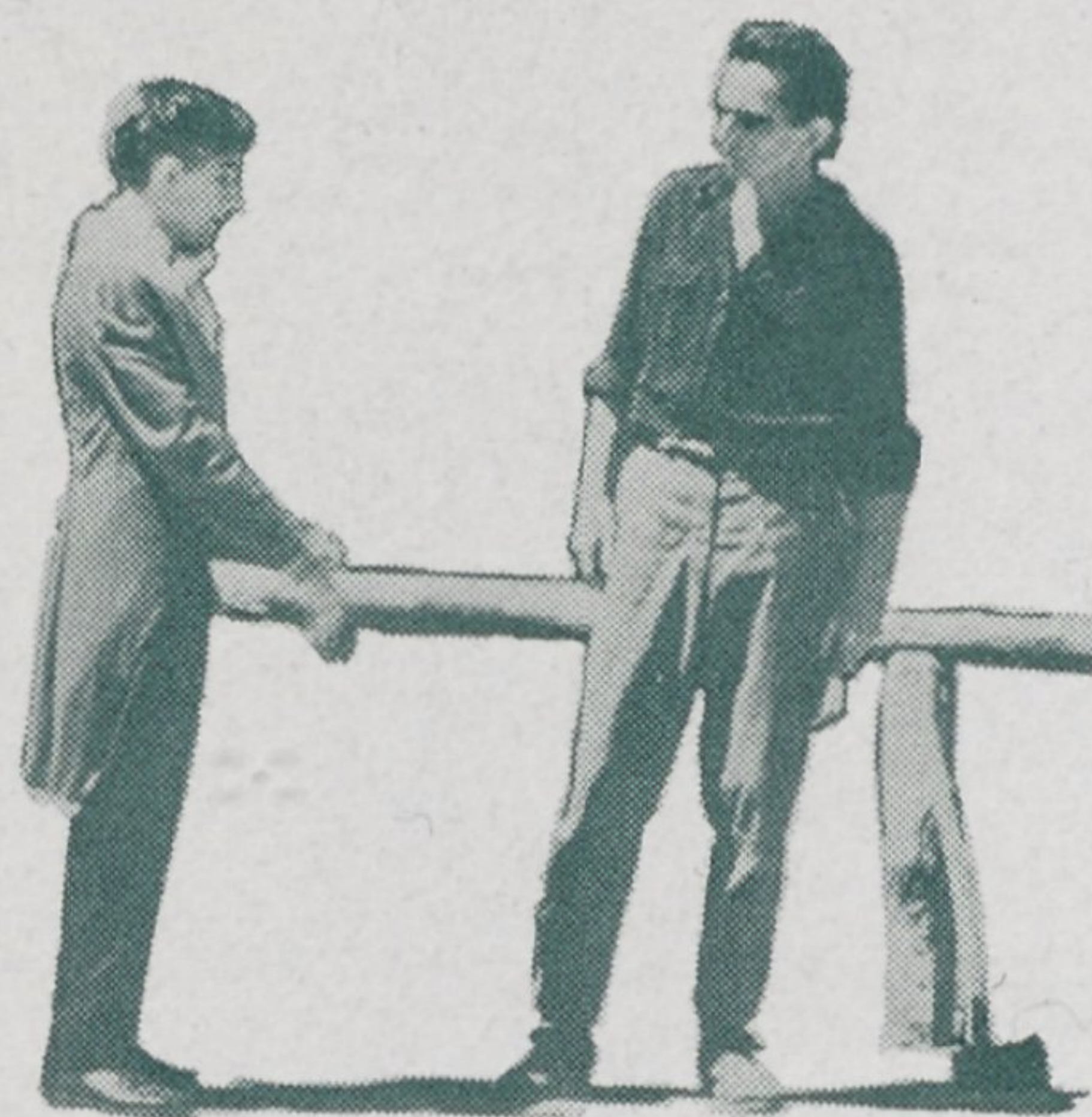
\**Producer*—The New Salem Lincoln League, of Petersburg, a non-profit civic organization whose purpose is to perpetuate the history and traditions of Lincoln's New Salem.

Performances: 8:10 (C.S.T.) nightly except Mondays.

June 28 - August 24, 1952



RECEIVING NATIONWIDE RECOGNITION...



# "Forever this Land"



KERMIT HUNTER'S SYMPHONIC DRAMA tells the story of six momentous years in the life of Abraham Lincoln and the forces of American destiny which helped shape him . . . tragedy, triumph, humor, pathos—all are combined in a deeply moving portrayal of pioneer Illinois in the 1830's . . . two acts, twelve memorable scenes, a cast of sixty experienced young Illinois actors and actresses and featuring a choir of sixteen matched voices.

FOREVER THIS LAND is also the story of the rise and decline of New Salem, a pioneer village whose history is almost completely encompassed in the brief period that Lincoln lived there . . . with the artistry of a master playwright, Author Kermit Hunter shows that New Salem was placed here on the Illinois prairie for one purpose, and that when its purpose was accomplished the village was permitted to die.

The first summer-long outdoor drama west of the Alleghenies, FOREVER THIS LAND opens its second successful season on Saturday evening, June 28, at 8:10 (C.S.T.) in Kelso Hollow Theatre at New Salem State Park. Performances will run without a break through July 6 and nightly thereafter except Mondays through August 24.



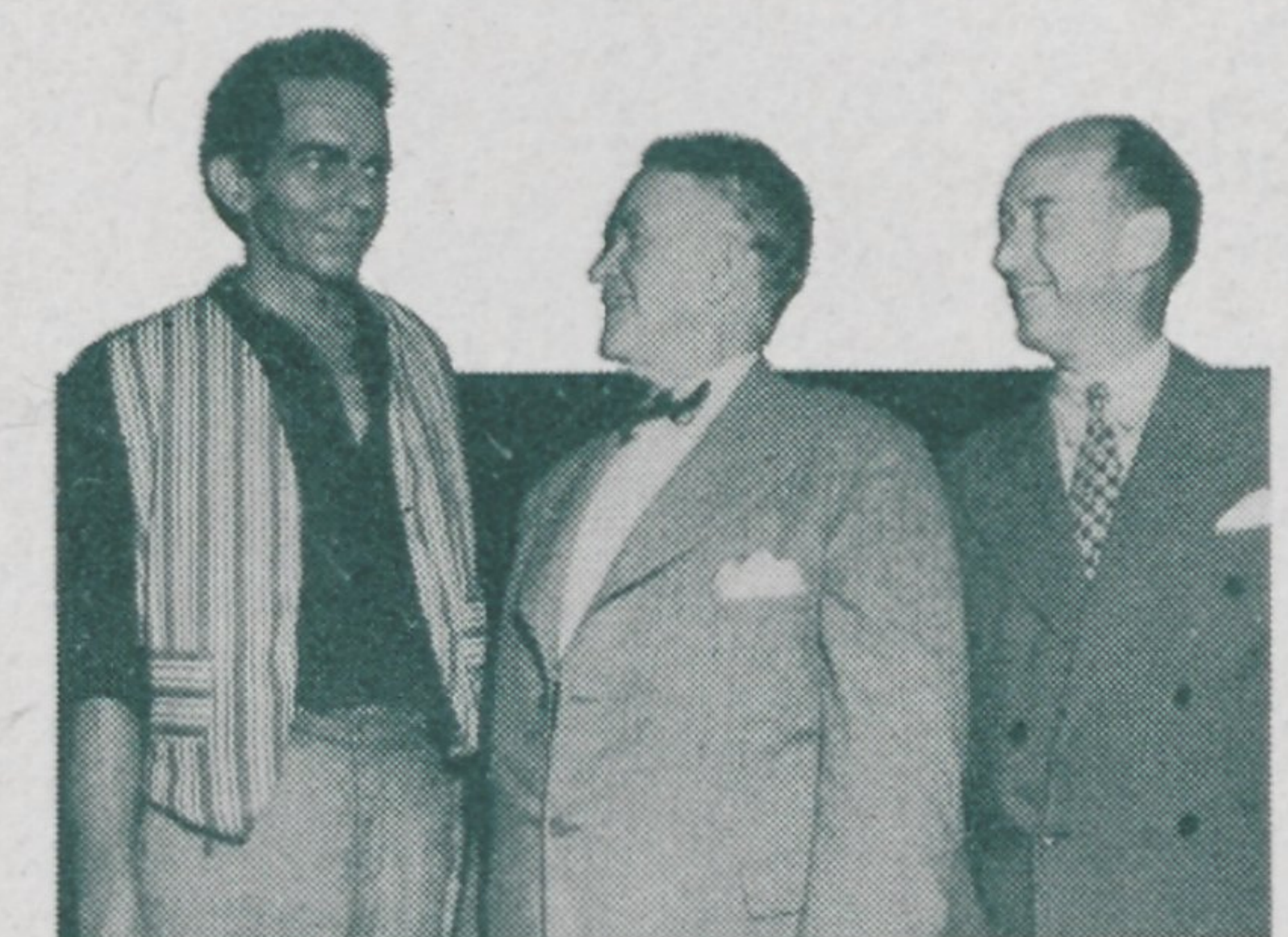
## NEW SALEM STATE PARK

New Salem State Park is one of the most impressive shrines in the nation. Here, reproduced in flawless authenticity—more than twenty buildings in all—is the village where Lincoln first left his imprint on the pages of history. It was here that he studied by the light of burning shavings in the fireplace of Henry Onstott's cooperage . . . it was here that he clerked in a store, suffered failure as a storekeeper, served as postmaster . . . here he met and loved Ann Rutledge . . . here he drilled with other volunteers before leaving to fight in the Black Hawk War . . . and it was from New Salem that he was first elected to public office as a representative in the State Legislature.

It can be safely said that the six years Lincoln lived in New Salem formed a turning point in his career. From the gangling rawboned youngster who came to the village in 1831, he left in 1837 safely embarked upon a career in law and statesmanship that even then showed indications of leading to the greater things to come.

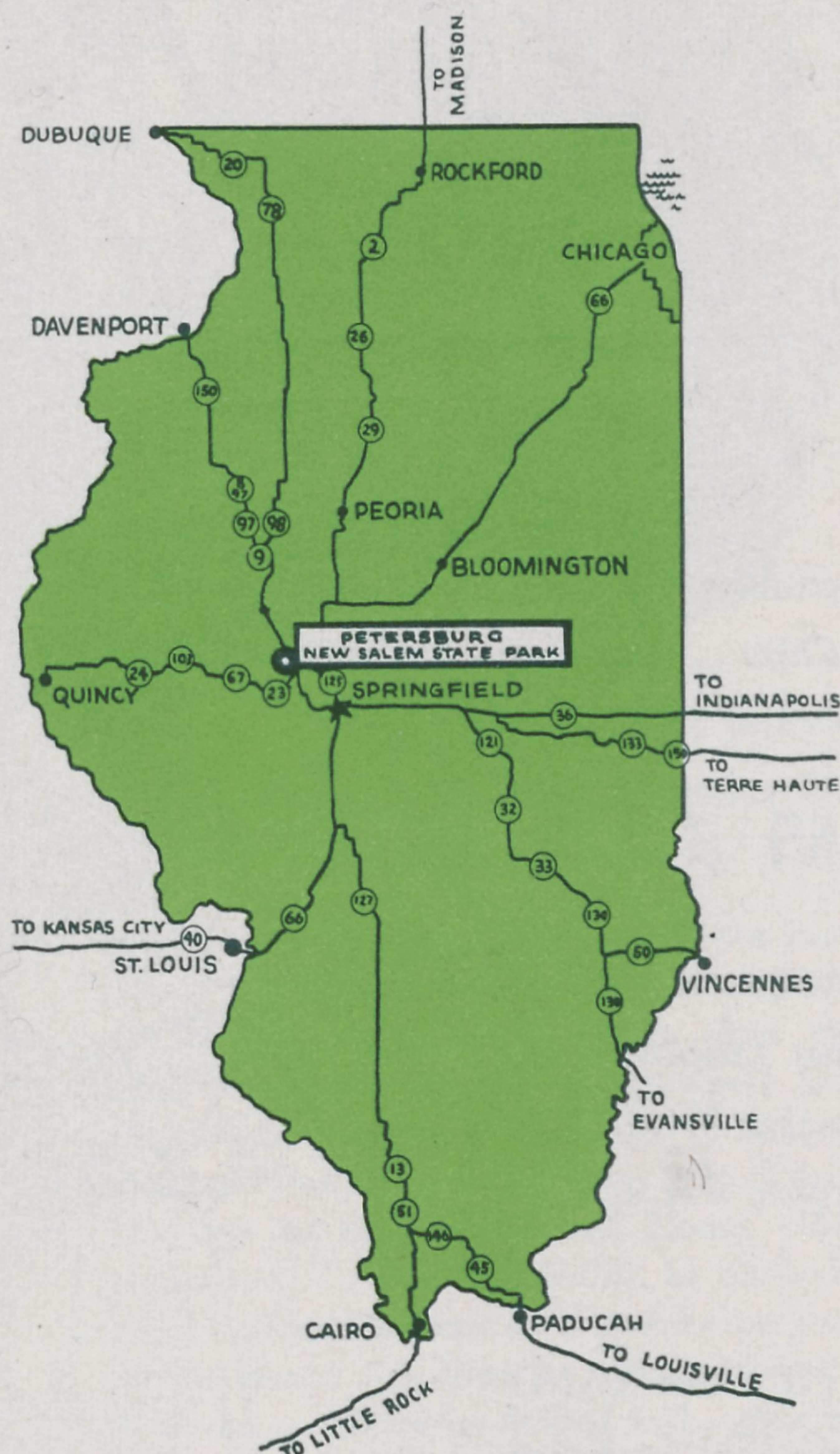


Kelso Hollow Theatre, a natural amphitheatre seating nearly 3,000 spectators. Reproductions of three buildings from New Salem village appear on the sixty-foot center stage.



Vice President Alben Barkley, attending a performance during the premiere season as guest of Governor Adlai Stevenson, chats with Harlington Wood, Jr., who portrayed Lincoln. Mr. Barkley termed the drama "magnificent."

# IT'S EASY TO GET TO NEW SALEM



## *"Forever this Land"* **SECOND BIG SEASON**

### TICKETS

General Admission tickets are on sale at the FOREVER THIS LAND box office, New Salem State Park, only on the day on which the tickets are to be used. Adults, \$1.80 and \$1.00; Children, 60 cents and 50 cents.

Reserved Seat tickets are on sale at key points in Springfield and Petersburg, and at the theatre box office. All reserved seats, \$2.40.

Advance Reservations may be obtained for reserved seats only. Address requests to FOREVER THIS LAND, Petersburg, Illinois.

### LODGING

Tourist accommodations near New Salem State Park are of the best . . . there are facilities within a 20 mile radius to care for more than 5,000 overnight visitors . . . advance accommodations may be obtained by writing FOREVER THIS LAND, Petersburg, Illinois.