

11-9-04

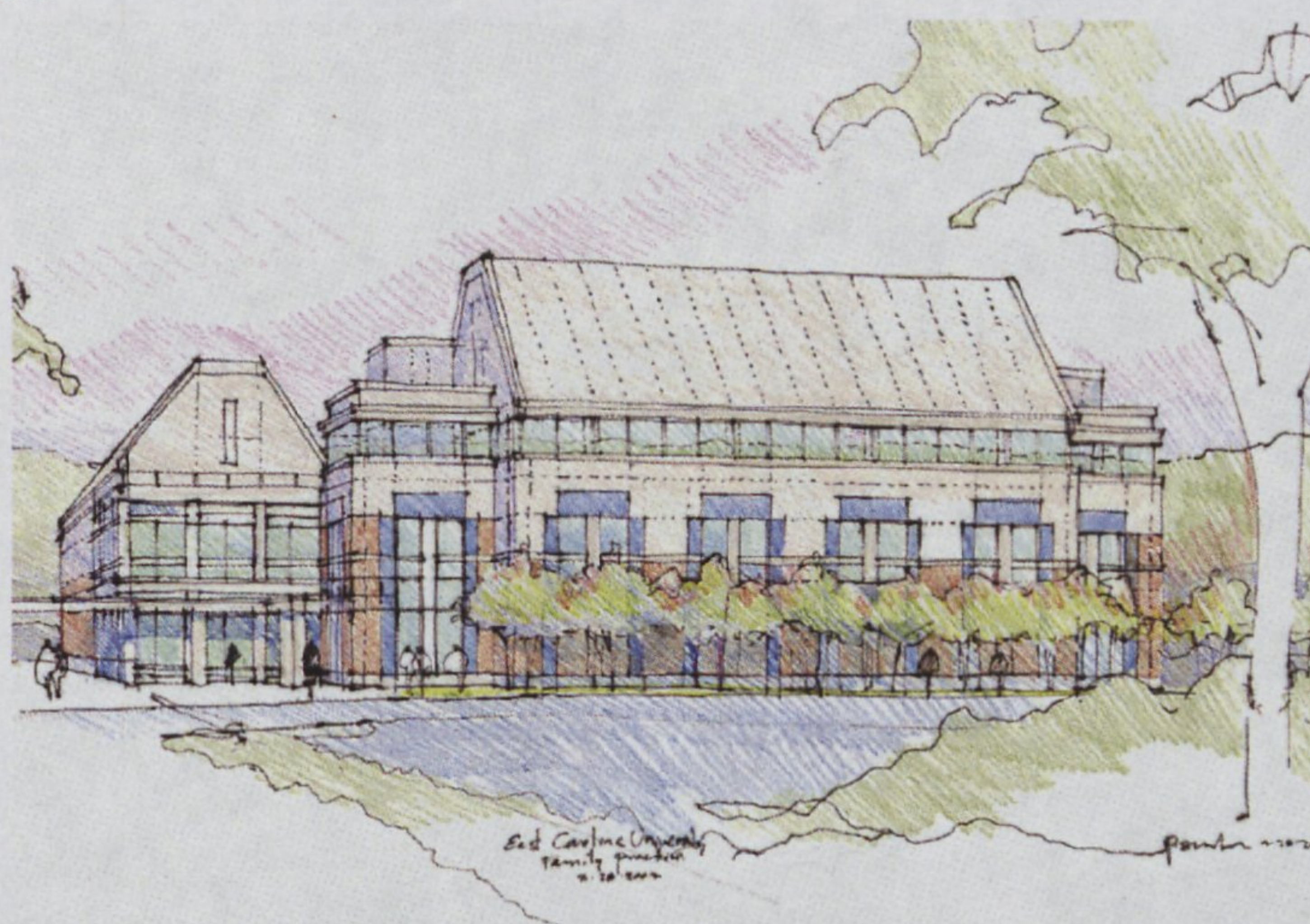
FAMILY PRACTICE CENTER Proposal

The North Carolina General Assembly founded the Brody School of Medicine at East Carolina University, with a stated mission to train Primary Care (Family Care) Physicians. Since that time, the School has been tremendously successful at encouraging its medical school graduates to remain in the State and provide access to healthcare for citizens of eastern North Carolina. In fact, over 75% of medical school graduates who complete their residency training in Family Medicine at our affiliated major teaching hospital (Pitt County Memorial Hospital in Greenville, under the direct supervision of the medical school faculty) remain in North Carolina to practice medicine. The vast majority provides critically needed care in rural and underserved communities.

Family physicians receive four years of medical school education followed by a minimum of three years of specialty training. If we are to encourage, recruit, and retain the best medical school students to Family Medicine careers, it is critical that they be trained in a state-of-the-art facility, motivated by the full scope and range of responsibilities the challenging discipline demands. Those students who are strongly mentored in such an environment are much more likely to become family physicians and remain in North Carolina.

Constructed in 1975, the current Eastern Carolina Family Practice Center has been the training home for more than 250 family doctors, most of who practice in North Carolina. In any accredited residency training program for Family Medicine, the "Center" is the centerpiece. The "Center" is as important to the training of Family Physicians as state-of-the-art operating rooms are to the training of surgeons. The Eastern Carolina Family Practice Center is out-dated, and overcrowded. This means that our Department of Family Medicine can no longer effectively compete in the recruitment of residents, fellows, and faculty. Likewise, inadequate facilities represent a challenge to delivery of quality care for our citizenry.

Any decline in the strength of Family Medicine is a serious threat to the health of our state and region. An April, 2004, study by Baicker, and Chandra, Assistant Professors of Economics from Dartmouth, and funded by the National Institute on Aging, shows that states with the highest number of "general practitioners" per 1000 patients rank significantly higher, both in terms of quality and cost-effectiveness of healthcare. Without a new Family Practice Center at the Brody School of Medicine, a population of people with some of the worst health indicators in the nation is going to be even more threatened. Funding for this critical initiative is sought during this fiscal year.



Pirate Club

11-9-04

East Carolina University Educational Foundation, Inc.
Statement of Cash Receipts and Expenditures
Two Months Ended August 31, 2004 and 2003

	<u>Two Months Ended 8/31/04</u>	<u>Two Months Ended 8/31/03</u>	<u>F/Y 2004-2005 Budget</u>
Receipts:			
Gifts-In-Kind	\$ - 0 - *	\$ - 0 - *	\$ 295,500
Unrestricted Contributions	258,819	391,320	3,800,000
Investment Income	4,188	5,920	26,800
Fund-Raisers - Net	12,259	36,603	165,000
Chapter Fund-Raisers - Net	34,703	21,144	124,000
Miscellaneous	27,195	27,812	110,100
Endowment Earnings Transfer	- 0 -	- 0 -	50,000
Total Receipts	<u>337,164</u>	<u>482,799</u>	<u>4,571,400</u>
Less Expenditures:			
Operating Expenditures:			
Gifts-In-Kind	- 0 - *	- 0 - *	89,500
Personnel	109,913	82,640	591,300
Capital Campaign Expenses	- 0 -	- 0 -	43,000
Other	66,868	56,359	445,100
Total Operating Expenditures	<u>176,781</u>	<u>138,999</u>	<u>1,168,900</u>
Less Expenditures on Behalf of			
ECU Athletics:			
Gifts-In-Kind	- 0 - *	- 0 - *	206,000
Unrestricted Scholarship Funding		- 0 -	2,800,700
Other	21,810	4,097	90,600
Note Principal & Interest	104,588	- 0 -	289,000
Total Expenditures on Behalf of			
ECU Athletics	<u>126,398</u>	<u>4,097</u>	<u>3,386,300</u>
Total Expenditures	<u>303,179</u>	<u>143,096</u>	<u>4,555,200</u>
Net Receipts Over (Under) Expenditures	<u>\$ 33,985</u>	<u>< \$ 339,703 ></u>	<u>\$ 16,200</u>

* Note, Gift-In-Kinds were not recorded for the first two months of Fiscal Year 2004-05 and 2003-04 respectively.

K

11-9-04

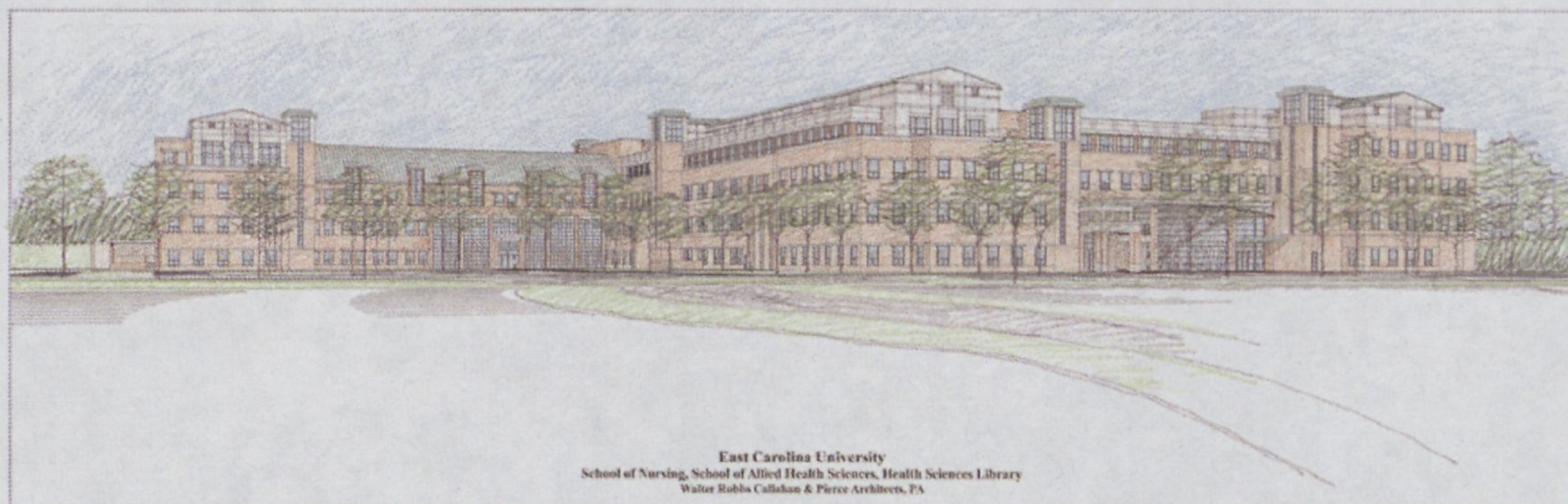
ACADEMIC HEALTH CENTER Status

East Carolina University is constructing a new facility to house the School of Nursing, School of Allied Health Sciences and a new Laupus Library in proximity to the existing Brody School of Medicine and our teaching hospital, the Pitt Memorial Hospital. This expansion will bring all the schools of the Division onto one consolidated campus. Ground breaking for the new facility was held in March, 2004 with an anticipated completion date expected in early 2006.

The Academic Health Sciences Campus will be a state-of-the-art facility, affording students and faculty access to resources that will create and refine cutting-edge medical, information, and communication technologies to deliver better services and improve human health. SMART Classrooms, wireless access, and user-friendly facilities will allow faculty, staff, and students to focus on content mastery.

This move to a centralized campus will enhance ECU's ability to train caregivers, conduct research and deliver clinical services as an interdisciplinary team in a supportive environment for faculty, staff, and students. Interdisciplinary teaching advances coordinated health care delivery. Such teaching requires an interdisciplinary, multidisciplinary, multi-departmental approach to health care. When co-located, the healthcare professional team, including physicians, nurses, allied health technicians, and health sciences librarians, will train together in an evidence-based approach to healthcare.

Designed by Walter, Robbs, Callahan & Pierce, Architects, PA of Winston-Salem, North Carolina, the \$58+ million project (\$55.536 million construction; \$3.0 utility infrastructure) is funded by the 2000 North Carolina Higher Education Bond initiative. Significantly, the skyrocketing costs of steel and copper potentially may consume the \$5.8 million identified for equipment and furniture. When completed by early 2006, the *Academic Health Sciences Center* will centralize health sciences education, foster a team approach to health care education, research and delivery, and serve as a strong economic driver for the region.



East Carolina University
School of Nursing, School of Allied Health Sciences, Health Sciences Library
Walter Robbs Callahan & Pierce Architects, PA