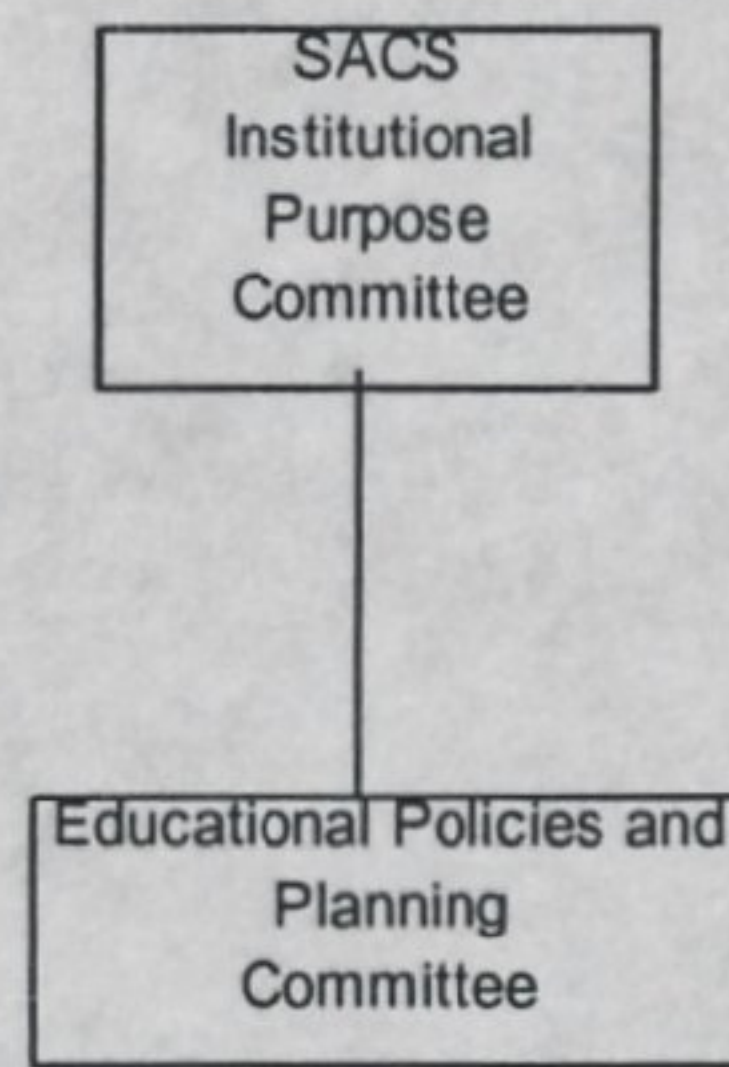


4-18-00

Faculty Senate

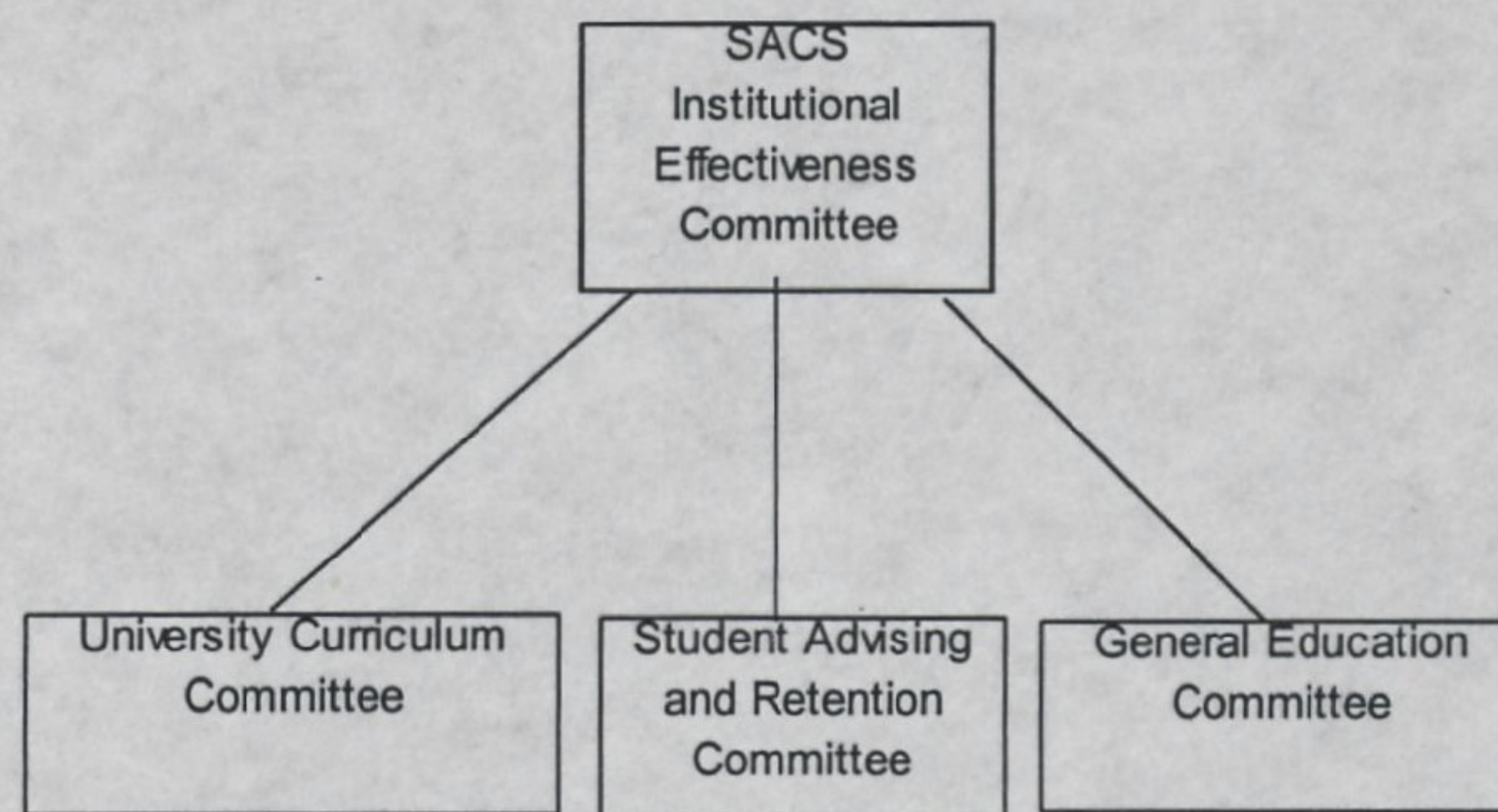
Relationships between Faculty Senate Committees & SACS Self-Study Committees

Compliance Committees



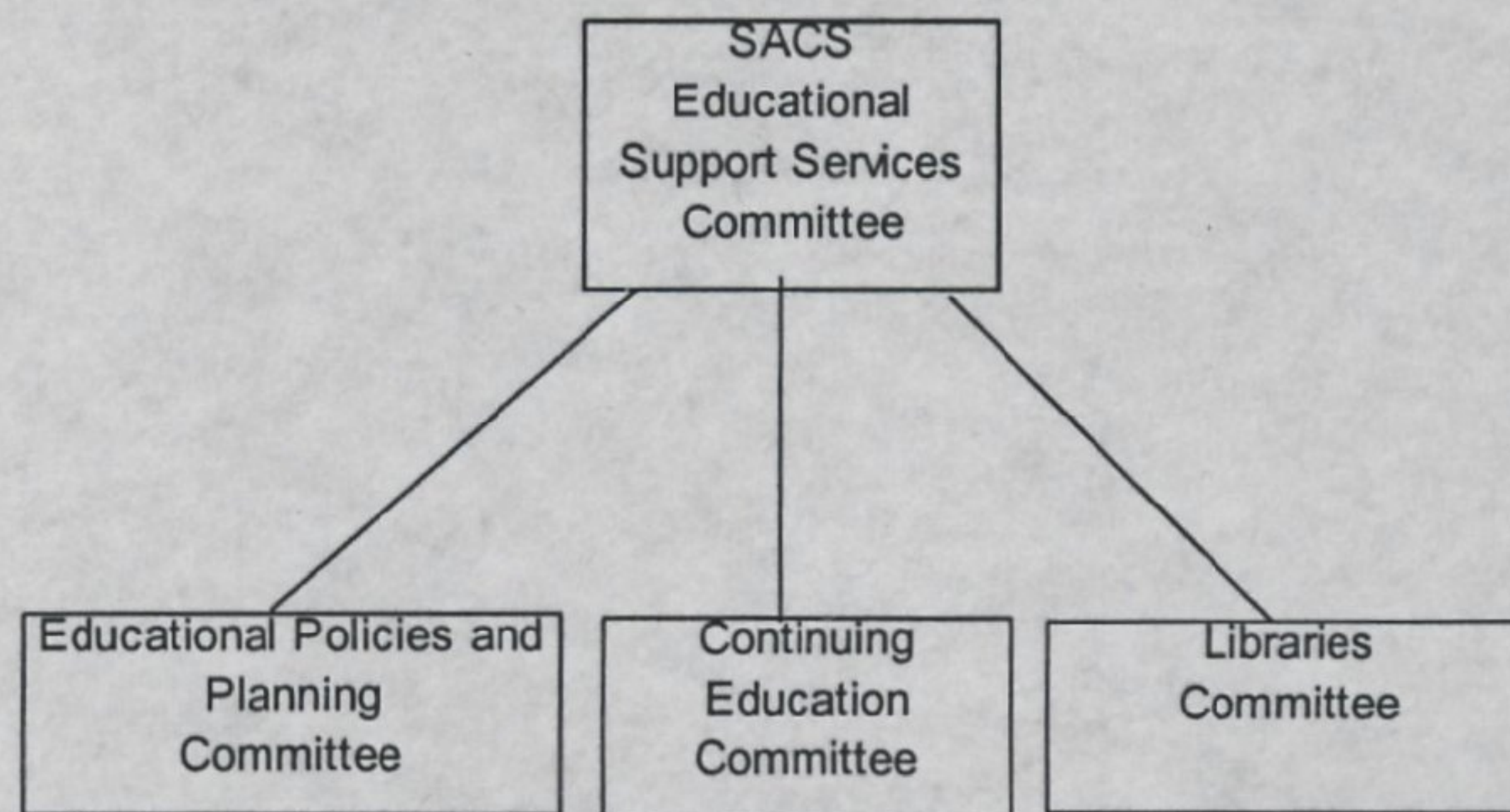
Institutional Purpose Committee Charge.

1. Review whether the vision statements within the operational plans of each office to determine how well units across campus are accomplishing the mission of the University.
2. Compare the review of institutional purpose to the "must" and "should" statements to determine their compliance and to formulate any necessary recommendations.



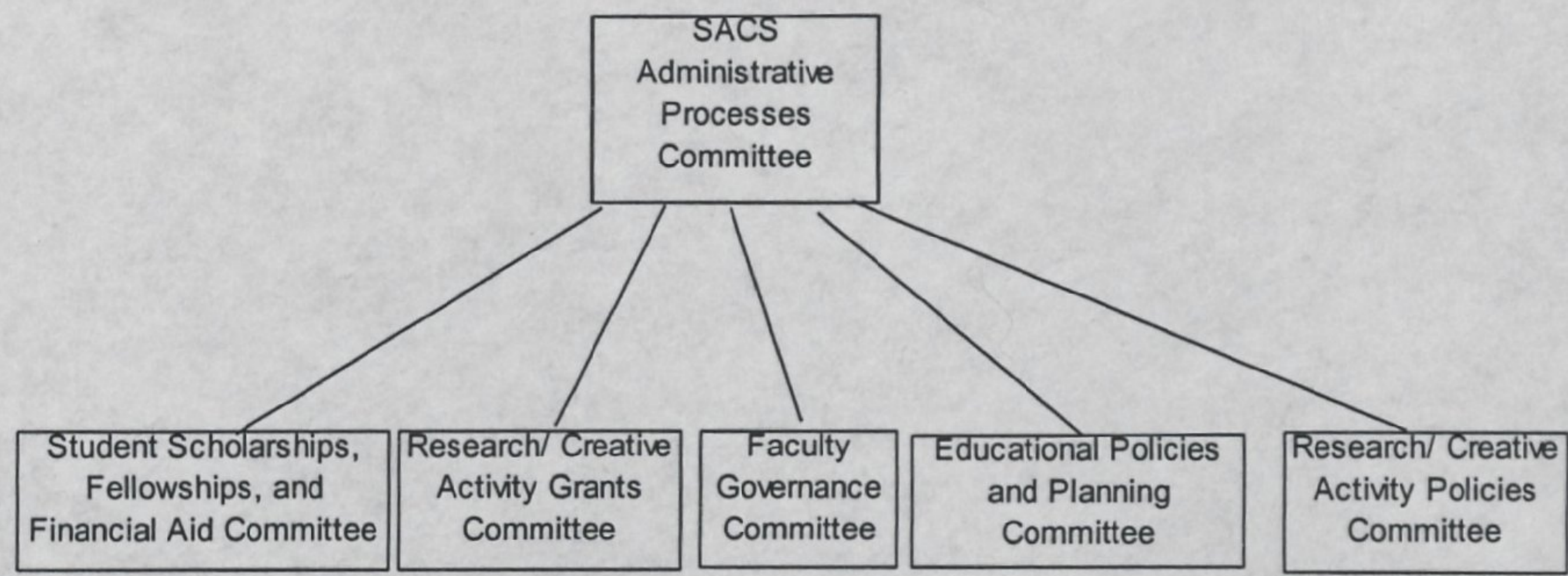
Institutional Effectiveness Committee Charge.

1. Review planning and evaluation processes for educational programs, administrative and educational support services, and institutional research.
2. Compare the strengths and weaknesses assessment to the "must" and "shoulds" statements to determine their compliance and to formulate any necessary recommendations.



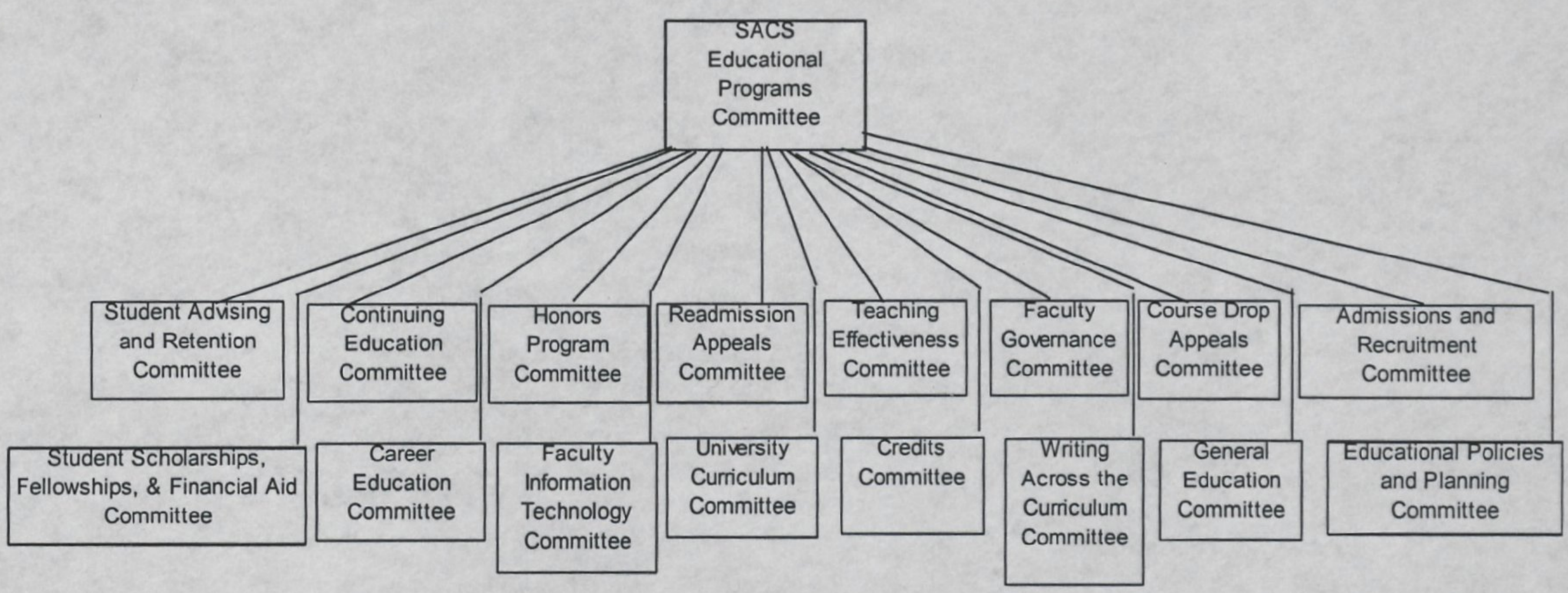
Educational Support Services Committee Charge.

1. Review the strengths and weaknesses of services supporting the University's educational purpose, including libraries, instructional support, computer services, and services to complement the social, moral, and physical development of students.
2. Compare the strengths and weaknesses assessment to the "must" and "shoulds" statements to determine their compliance and to formulate any necessary recommendations.



Administrative Processes Committee Charge.

1. Review the adequacy of governance and administrative structures as well as the availability and management of financial and physical assets to support the purpose of the university.
2. Review administrative offices, functions, and units to ensure goals have been established which derive from and support the purpose of the university; evaluate its success in achieving these goals, and use the evaluation in making appropriate modifications in resources, programs, and services.
3. Compare the above assessment to the "must" and "shoulds" statements to determine their compliance and to formulate any necessary recommendations.

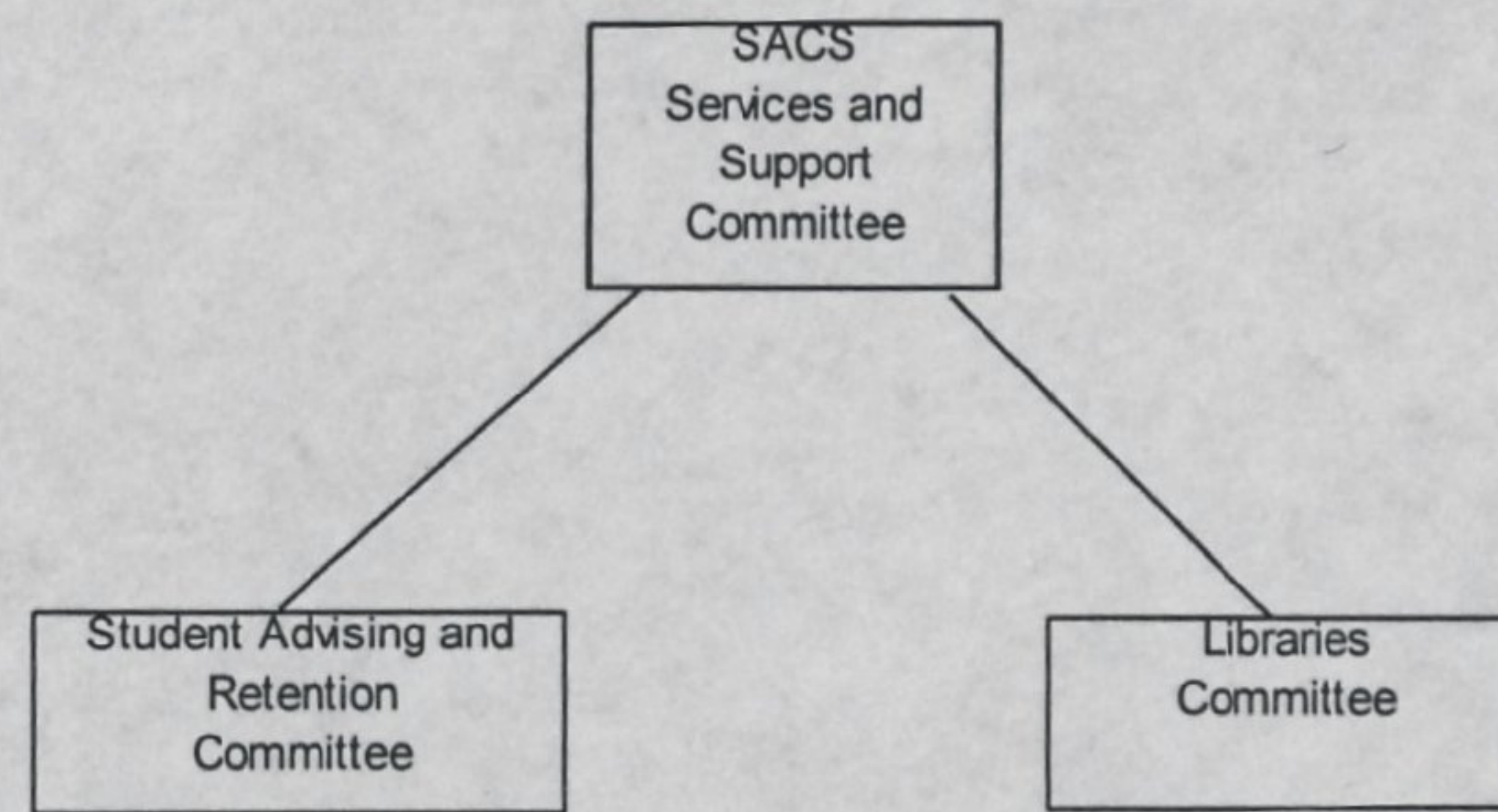


Educational Program Committee Charge.

1. Review whether the institution's focus of resources and energies on the education is consistent with its purpose.
2. Review each program or unit to determine if it establishes goals that derive from and support the purpose of the institution
3. Evaluate each program or unit's success in achieving these goals
4. Demonstrate the use of the evaluation in making appropriate modifications in resources, programs and services
5. Compare the review of resources and efforts tied to education of students to the "must" and "should" statements to determine their compliance and to formulate any necessary recommendations

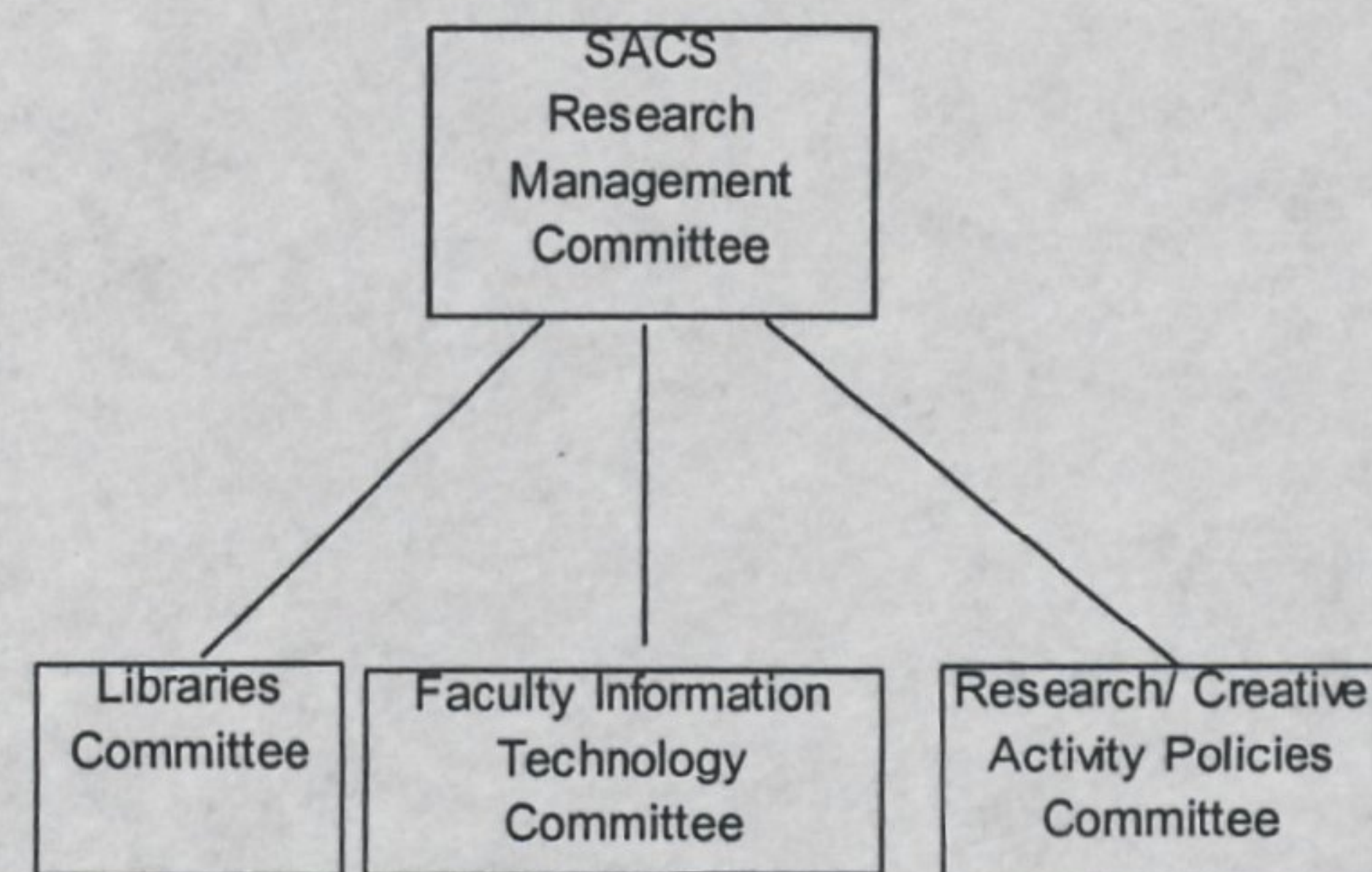
Relationships between Faculty Senate Committees & SACS Self-Study Committees

Strategic (Enhancement) Committees



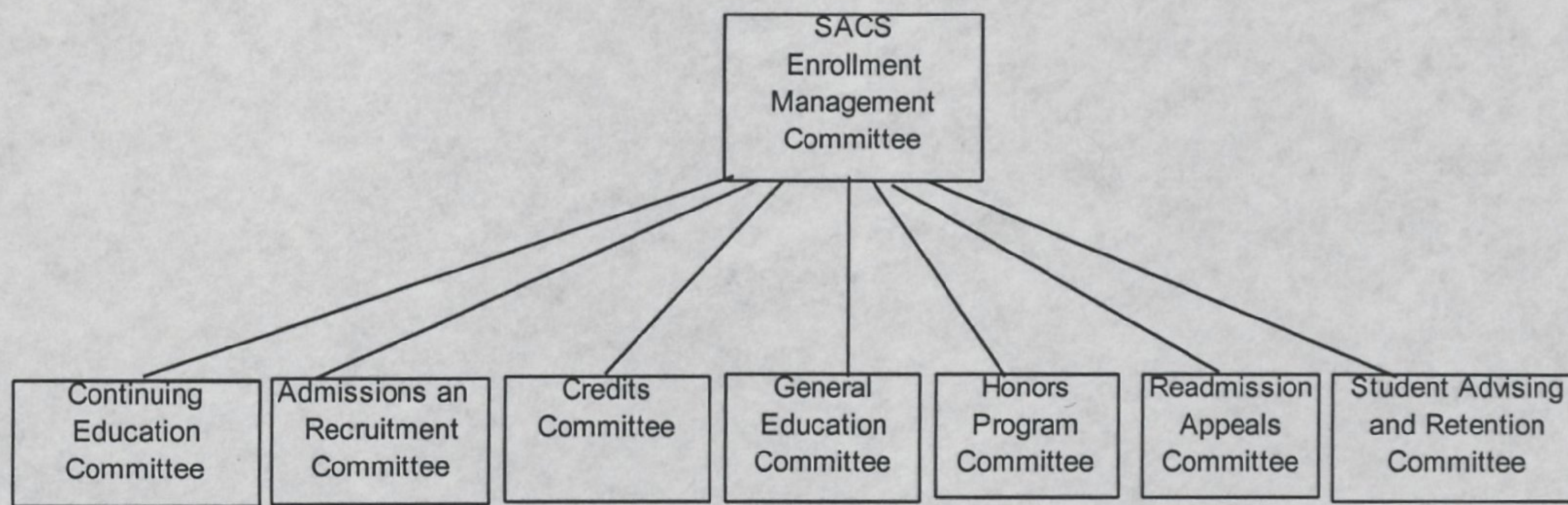
Services and Support Committee Charge.

1. Develop strategies to facilitate the delivery of service and support functions through the use of technology to accommodate growth and enhance quality.
2. Develop appropriate strategies for the development of the university's information technology and processes to facilitate the provision of its educational services, student services, and administrative functions.



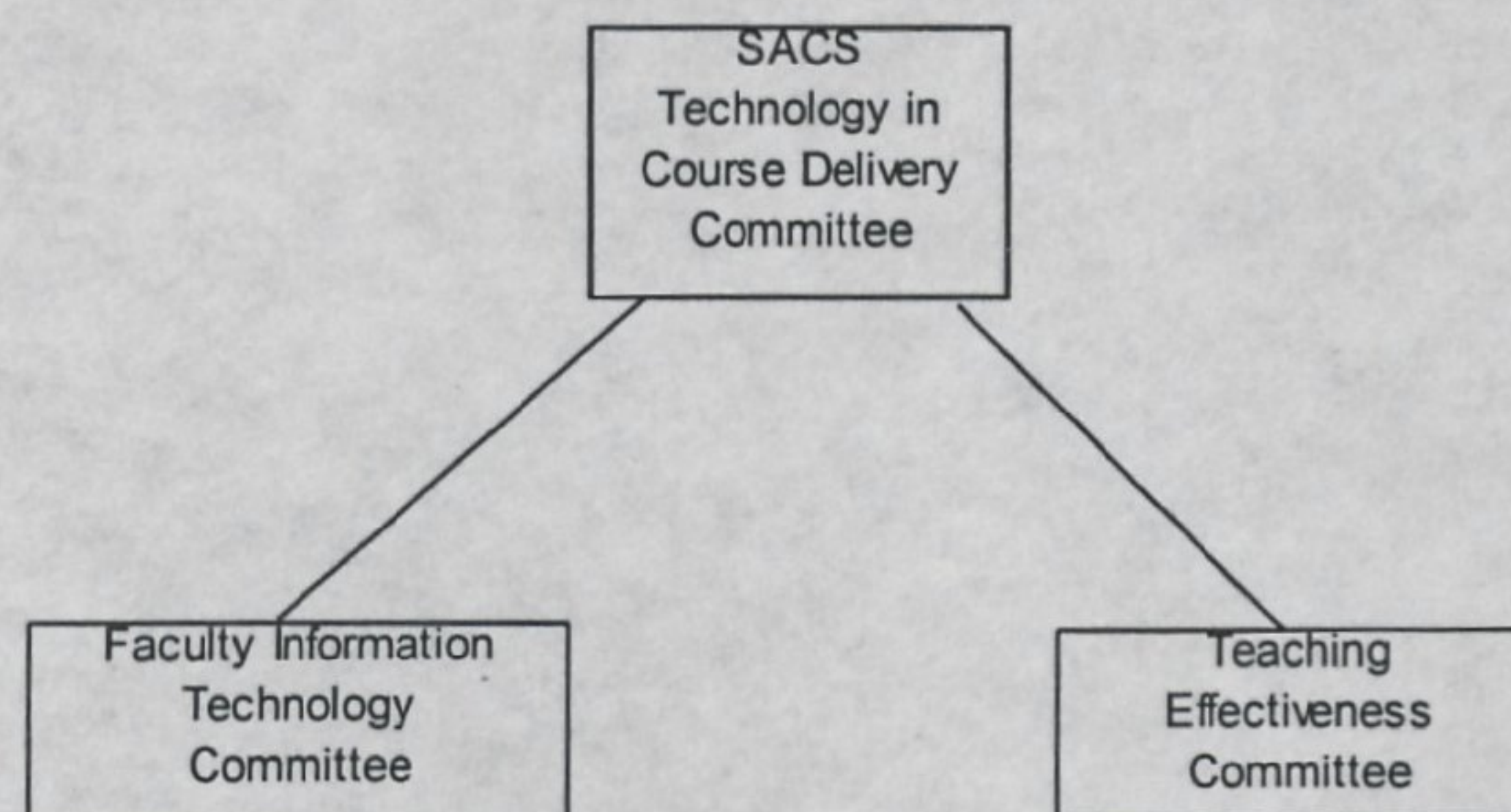
Research Management Committee Charge.

1. Develop strategies that lead to interdisciplinary efforts for centers of excellence to respond to changes in how scholarly activity is undertaken and how resources are accessed and managed.
2. Examine how the university focuses its resources and how to improve that process to address the quality challenge of the escalating costs of research and library support and the different ways in which scholarly activity, be it research or creative activity, is being conducted given technological advancements in communication.
3. Develop strategies to maintain and expand the information and communication infrastructure to facilitate the innovative use of information and communication technologies and methods by students and faculty.



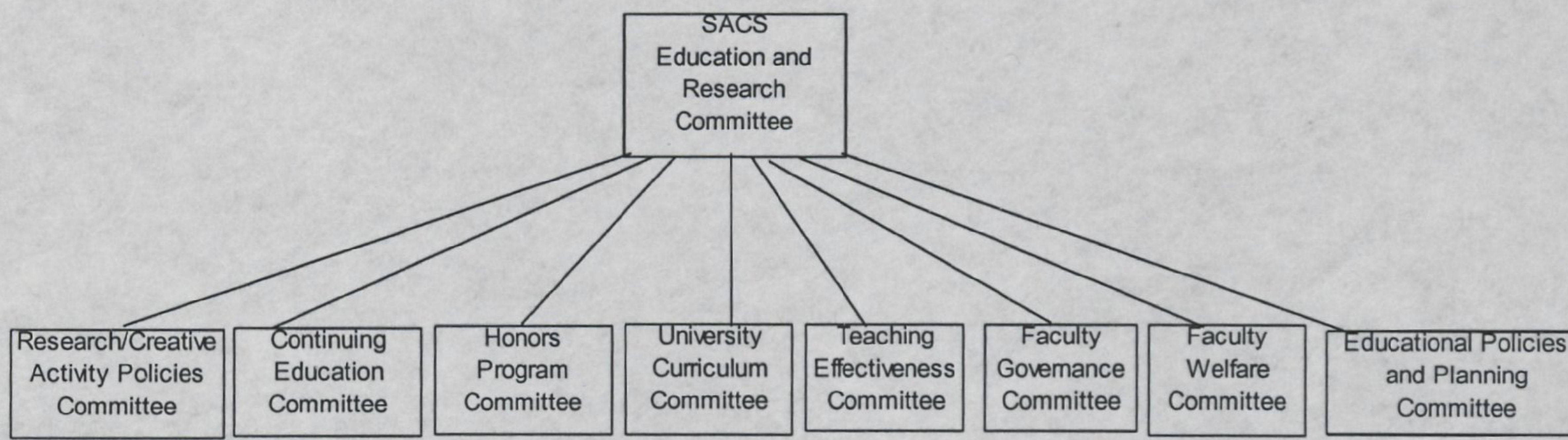
Enrollment Management Committee Charge.

1. Review the organizational structure of the institution and its planning process as well as the adequacy of academic programs offered and student services.
2. Develop strategies to achieve the desired quality of students, faculty, staff, and educational process during this anticipated growth period (an expected 40-50% enrollment increase over the next 9 years) given the potentially severe facility limitations.



Technology in Course Delivery Committee Charge.

1. Develop strategies to help alleviate space limitations while focusing on improved student education.
2. Develop strategies to respond to changes in course delivery and teaching methods as a result of technology.
3. Identify the best educational practices in distance education and how they can be applied to on-campus courses.
4. Propose creative use of technology to better serve the expected increase in students within the confines of limited office and classroom space.
5. Propose methods to help assess and implement effective ways of incorporating new information technologies into the educational process.



Education and Research Committee Charge.

1. Develop strategies to enhance quality undergraduate and graduate education while increasing research and doctoral programs.
2. Develop strategies to support changing faculty workloads adequately.
3. Review and develop reward structures that recognize the value of various roles and contributions.
4. Review the impact of proposed strategies to ensure appropriate balances of resources are allocated.