

NoCar
Rare
Oversize
LB
1927
E3x
1948
c. 2

the 1948 yearbook



East Carolina Teachers College



A Student Publication

TECOAN

Society Dance ... "The Family Portrait."



Homecoming ... Sadie Hawkins Day ... Soda

Sharp Breakfast ... Eight O'clock Pops.



Memories
Fresh
Coke
Dry Lake
Fishing
A
E

As The Days Pass By..

May the 1948 TECOAN bring back memories of four years well spent. To the seniors, may your steps of progress be firm and sure and not as footprints in the shifting sands of time.





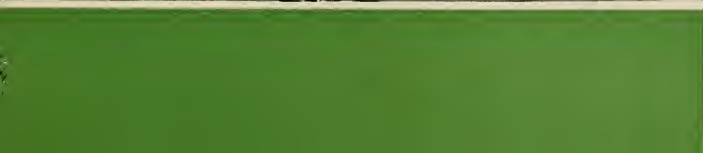
To Our Friend and Advisor

the **TECOAN** *of 1948*



In our struggle in life, too many people forget to live; they merely exist. They lack those priceless possessions that shine forth—without restraint—in a smile. But we have Dean Jenkins to thank for renewing our faith that in this tumultuous, sometimes unfriendly world there are still some who draw their abundant living from deep wells and who comfort by the warmth of their genuine smiles.

DR. LEO W. JENKINS *We Dedicate*



Dr. John Decatur Messick
President



Annie L. Morton
Dean of Women

Dr. Leo W. Jenkins
Academic Dean



THE



Growth in any endeavor requires effort. Satisfaction results from the realization of an achieved goal. Each new accomplishment marks a niche in the path of progress. There is always another frontier for the person with vision.

Your education has just begun. A foundation has been laid for the building of a super structure. Your future is in your own hands. As you attain objectives, your ambitions will multiply, your capacities will increase, and your life will grow richer and fuller. But in all your successes remember to have an abiding faith in the eternal Master who is always present in time of need.

East Carolina Teachers College is proud of you, and will be just as great a friend as you will let it be. We of the faculty wish to be remembered by you, and to share in the honors and prestige which will continuously attend your efforts.

DR. JOHN DECATUR MESSICK
President

You, the seniors, are to be congratulated for your willingness to accept the difficult and highly significant test of turning youth into productive citizens. Your future work will not be easy. The physical mental and spiritual requirements are so high that only a few of the many who try become teachers. You are among those few who have succeeded. The faculty and staff are proud of you and wish for you further success, health and happiness in all your future endeavors.

DR. LEO W. JENKINS
Academic Dean

Character is the most important attribute of a successful leader. There is no equivalent for it. It can have no substitute.

To inspire the oncoming generations to think rightly, to act honorably and to raise the level of thinking and living is the big job of the teachers of today.

ANNIE L. MORTON
Dean of Women

ADMINISTRATION

First Row: Dr. Howard J. McGinnis, Field Service; Dr. J. L. Oppelt, Administration and Supervision; Jean Lane, Art, Acting Director; Paul Powell, Art; Mrs. Bernice Wragge, Art; Norman Cameron, Business Education. Second Row: Audrey Dempsey, Business Education; Lena C. Ellis, Business Education; Dr. Carl Adams, Education and Psychology; Lucile Charlton, Education and Psychology; Dora E. Coates, Education and Psychology; Annie C. Newell, Education and Psychology.



Faculty of

Lucile Turner, English, Director; Mary Greene, English; Louise Greer, English; Lois Grigsby, English; Dr. M. N. Posev, English.



Mrs. D. E. Vornholt, English; Marguerite Austin, Foreign Language; Dr. Calvin Claudel, Foreign Language; Dr. P. W. Picklesimer, Geography, Director; J. B. Cummings, Geography.



Elwood Terry, Geography; Dr. N. M. Jorgensen, Health and Physical Education, Director; James Johnson, Health and Physical Education; Nell Stallings, Health and Physical Education; Thursa Steed, Health and Physical Education.



Mrs. Adelaide Bloxton, Home Economics, Director; Mabel Lacy, Home Economics; Ruth Lambie, Home Economics; Mary Poin Dexter, Home Economics; Virlyne Usry, Home Economics.



Wendell M. Smiley, Library Science, Director; Dale Bentz, Library Science; Margaret Sammon, Library Science; Elizabeth Walker, Library Science; Dr. P. C. Scott, Mathematics, Director.



Ellen R. Caldwell, Mathematics; John D. Reynolds, Mathematics; Louise Williams, Mathematics; Dr. Rudolph Willmann, Music Education, Director; Herbert Carter, Music Education.



East Carolina



Elizabeth Drake, Music Education; Dr. Karl V. Gilbert, Music Education; Dan Vornholt, Music Education; J. O. Derrick, Science.



Christine Wilton, Science; Dr. A. D. Frank, Social Studies, Director; Peter Babich, Social Studies; Dr. L. F. Brewster, Social Studies.



Dr. Beecher Flanagan, Social Studies; Dr. P. A. Toll, Social Studies; Alma Browning, Critic Teacher; Eunice McGee, Critic Teacher.



Ann Redwine, Critic Teacher; Ruth White, Assistant Dean of Women; Kathleen Venters, Dormitory Counselor; Mrs. Agnes Barrett, Secretary to the President.



Mrs. Mildred Owens, Assistant to the Treasurer; Camille B. Clark, Dietitian; Mrs. Clem Garner, Alumni Secretary; Mrs. Susie Webb, Secretary, Alumni Office.



Lloyd Bray, Manager Student Stores.

"From Eight 'til Five"

. Society Dance ... "The Family Portrait."



... Homecoming ... Sadie Hawkins Day ... Soda

Sharp Breakfast ... Eight Black Pops.



While Strolling

We speak to the same familiar people, remark about the usual rainy weather, admire the cam-





rom Class to Class...

*pus, and begin to realize, in
time, how much a part of the
college we have become.*





SENIOR CLASS

Left to Right: Elizabeth Carter, treasurer; Francis M. Coiner, president; Anne T. Cates, vice-president; Hennie Ruth Whichard, secretary.

MANY YEARS FROM NOW we will look back to the days of college life—the Soda Shop, a football game, the leaves on the campus in the Fall. Remembering this, we will understand that the books and papers of those bygone days were the arms and armor that protected us in the days of our never-ending futures.

SENIOR

First Row:

A. J. Abdalla Selma, N. C.

Science and Business Education

Louisburg College, 1, 2; Student Legislature, 1; Science Club, 2, 3; President Catholic Club, 4.

Eugenia Anderson Burlington, N. C.

Parsons Education

Point State Committee, 3; Student Legislature, 3; Association for Childhood Education, 3, 4; Y. W. C. A., 4.

Mercedes Ange Jamesville, N. C.

Art and English

Meredith College, 1; Commerce Club, 2; Art Club, 3, 4; Secretary, 3; Women's Chorus, 2, 3, 4; Associate Business Manager *Tecoa*, 3; Business Manager, 1; House Committee, 1.

Iris Gay Arnold Louisburg, N. C.

Grammar Grade Education

Poe Society, 1, 2; International Relations Club, 2, 3.

Alma L. Arrington Hollister, N. C.

Home Economics and Social Science

Home Economics Club, 1; Association for Childhood Education, 1; Y. W. C. A., 1, 2, 3, 4; Cabinet, 2, 3; President, 4; Presidents' School, Summer '47.

Second Row:

Anne Hope Atkinson Elizabethtown, N. C.

Home Economics and Science

Science Club, 1, 2, 3; Home Economics Club, 1, 2, 3; Poe Society, 1, 2; W. A. A., 1, 2; Y. W. C. A., 1, 2.

Mrs. Frances Sutton Bailey Kinston, N. C.

Physical Education and Social Science

Women's Athletic Association, 1, 2, 3, 4; Secretary, 2; Vice-President, 3; President, 4; Tennis Varsity, 1, 2, 3, 4; Softball Varsity, 3; Student Legislature, 1; Emerson Society, 1, 2, 3, 4; *Teco Echo* Representative, 3; House Committee, Summer, '46; Vice-President House Committee, Summer, '47; Senior Superlative.

Kathleen Barker Lumberton, N. C.

Business Education and Social Science

Coker College, 1, 2; Lanier Society, 3, 4; Secretary, 1; Y. W. C. A., 3, 4; Cabinet, 1; Commerce Club, 3; Vice-President House Committee, 4.

Clyde Myrell Barrett Conway, N. C.

Grammar Grade Education

Budget Committee, 2; House Committee, 3.

Frances Virginia Bass Wilmington, N. C.

Home Economics and Science

College Band, 1, 2, 3; Y. W. C. A., 1, 2; Women's Athletic Association, 1, 2, 3, 4; Cabinet, 2; Volleyball Varsity, 2; Softball Varsity, 2, 3; Science Club, 1, 2, 3, 4; President, 3; Home Economics Club, 2, 3, 4; Handbook Committee, 3.

Third Row:

Ann Battle Rocky Mount, N. C.

Home Economics and Social Science

Science Club, 1; Women's Athletic Association, 1, 2; Poe Society, 1, 2, 3, 4; *Tecoa* Class Representative, 3; Home Economics Club, 1, 4; House Committee, 2.

Nell Battle Rocky Mount, N. C.

Home Economics and Social Science

Science Club, 1; Y. W. C. A., 1, 2, 3, 4; Women's Athletic Association, 1, 2; Poe Society, 1, 2, 3, 4; Home Economics Club, 1, 4; Junior Class President; *Teco Echo* Class Representative, 2.

Lola Beacham Washington, N. C.

Science and Physical Education

Science Club, 1, 2, 3, 4; College Band, 1, 2, 3; English Club, 1; Y. W. C. A., 1; Women's Athletic Association, 1, 2, 3, 4; Wesley Foundation Council, 4.

Dorothy Bennett Edward, N. C.

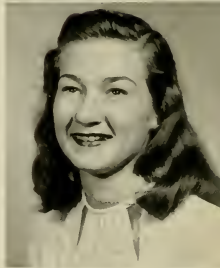
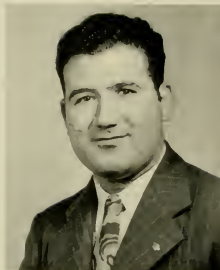
Business Education and Mathematics

Y. W. C. A., 1, 2, 3, 4; Secretary of Freshman "Y"; Chairman World Student Service Fund, 2; Vice-President, 3; Big Sister, 2, 3, 4; Math Club, 1, 2, 3, 4; Secretary and Treasurer, 2; Commerce Club, 1, 2, 3, 4; Pi Omnia, Pi, 2, 3, 4; Treasurer, 3; President, 4; Alumni Daughters and Sons, 2, 3; Poe Society, 2, 3, 4; Student Legislature, 3, 4; Senior Superlative.

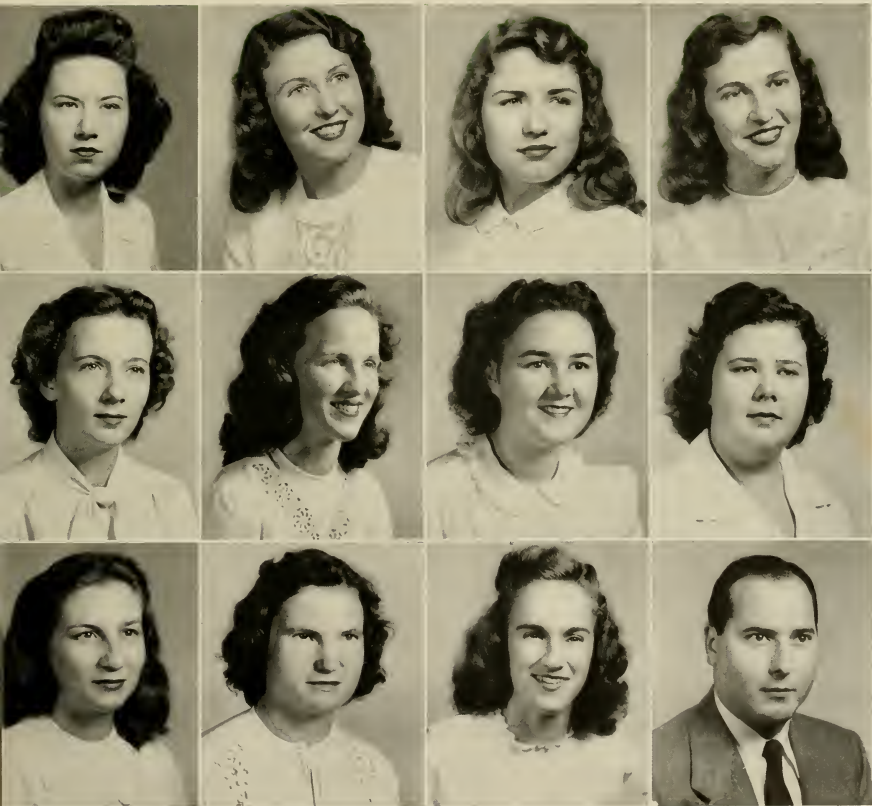
Belvin B. Beck, Jr. Lexington, N. C.

Business Education and Social Science

Phi Sigma Pi, 2, 3, 4; Commerce Club, 2, 3, 4; International Relations Club, 2, 3, 4; Veterans' Club, 3, 4; Senior Superlative.



CLASS



SENIOR

First Row:

Hubert B. Bergeron Spring Hope, N. C.

History and English
English Club, 2, 3, 4; Y. W. C. A., 1, 1; International Relations Club, 3, 4; *Teco Echo* Staff, 2; *Pieces o' Eight* Staff, 2; *Lanier Society*, 1, 2; *Wesley Foundation* Players, 3, 4; *Chi Pi* Players, 1, 2, 3, 4, *Clomid*, *Jane Eyre*, *You Can't Take It With You*, *Twin Beds*, 4; *Murder Has Been Arranged*, *Admirable Critchton*, Assistant Student Director, *I Remember Mama*, Student Director, *Snow White and the Seven Dwarfs*, Student Director, *Family Portrait*; Senior Superlatives.

Annie Maude Bivins Graham, N. C.

Home Economics and Science
Home Economics Club, 1, 2, 3, 4, President, 4; Science Club, 1, 2, 3, 4, Vice-President, 3; Y. W. C. A., 1, 2, 3; Handbook Committee, 1; Student Legislature, 4; John Wesley Spear Award, 3.

Christine Marie Bowen Ahoskie, N. C.

Primaries Education
Poe Society, 1, 2, 3, 4, Vice-President, 3; Y. W. C. A., 1, 2, 3; Women's Chorus, 1, 2, 3, 4; Association for Childhood Education, 1, 2, 3, 4; College Marshal, 1; Big Sister, 2; Assistant Editor *Pieces o' Eight*, 4; Treasurer of Women's Judiciary, 1.

Edith Bowles Greenville, N. C.

Business Education and Social Science

Edwards B. Bright Chocowinity, N. C.
Physical Education and Social Science
Jarvis Forensic Club, 1, 2, 3, 4, President, 3; Debate Team, 2, 3; International Relations Club, 3; Men's Athletic Association, 1, 2, 4.

Second Row:

Doris H. Brown Greenville, N. C.

Business Education and English

Helen Brown Magnolia, N. C.

Music and English

James E. Bullock Greenville, N. C.

History and English

Marion Burton Bethel, N. C.

Primaries Education
Association for Childhood Education, 1, 2, 3, 4; Y. W. C. A., 1, 2, 3, 4; Wesley Foundation, 2, 3, Vice-President, 3; Worship Chairman, 2; Vice-President House Committee, 3.

Margaret Elaine Carr Wallace, N. C.

Business Education and English
Commerce Club, 1, 2, 3, 4, Vice-President, 4; English Club, 1, 2, 3, 4; Beta Kappa Chapter of Pi Omega Pi, 3, 4; House Committee, Summer, '37; Treasurer Student Legislature, Summer, '37; Budget Committee, 4.

Third Row:

Ruth Carroll Raleigh, N. C.

English and Business Education

Elizabeth Tucker Carter Greenville, N. C.

Mathematics and History
Alumni Daughters and Sons, 4; Future Teachers of America, 4; Mathematics Club, 1, 2, 3, 4, Publicity Chairman, 3, Vice-President, 4; International Relations Club, 2, 3, 4; Secretary-Treasurer Women's Day Student Committee, 4; Treasurer Senior Class, Alpha Alpha Sigma, 4; College Orchestra, 1, 2, 3; Senior Superlatives.

H. Winfield Carter, Jr. Greenville, N. C.

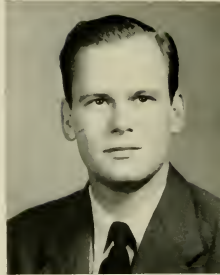
Mathematics and Science
College Orchestra, 1, 2; Delegate to Student Legislative Assembly, 2; Phi Sigma Pi, 1, 2, 3, 4; Mathematics Club, 1, 3, 4.

Ella Mae Cashwell Saxapahaw, N. C.

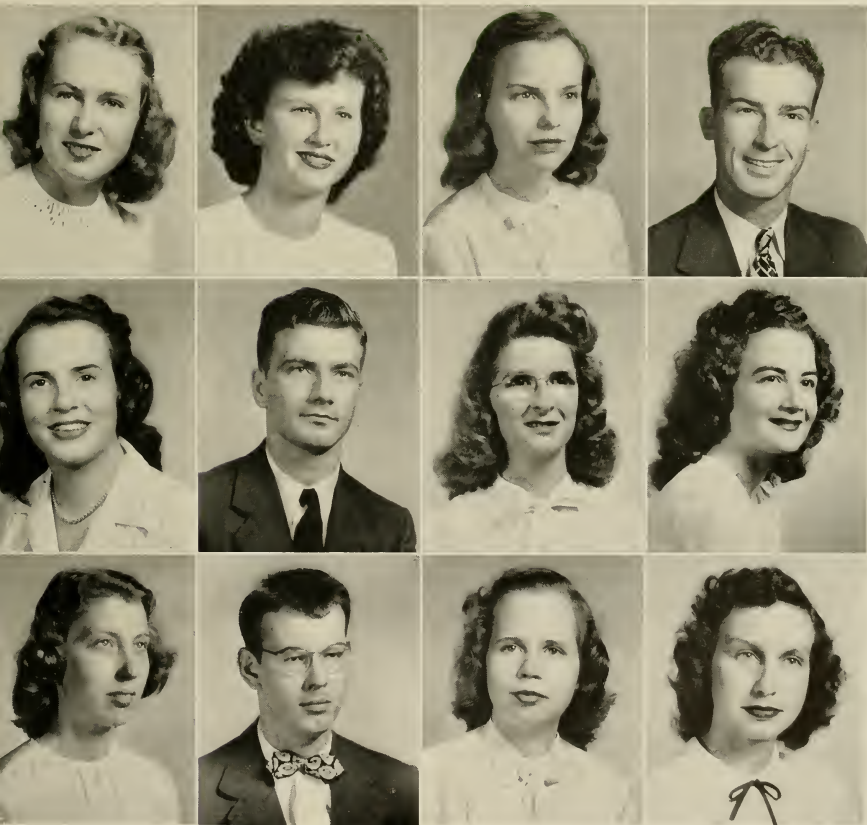
English and French
Co-Editor *Teco Echo*, 4, Managing Editor, 3, Editorial Staff, 1, 2; Editorial Staff *Pieces o' Eight*, 3; English Club, 2, 3, 4; Y. W. C. A., 1, 2, 3, 4; *Poe Society*, 3, 4; Elections Committee, 3; Jarvis Forensic Club, 2, 3, 4; International Relations Club, 2, 3; Phi Sigma Chapter of Sigma Pi Alpha, 2, 3, 4; Student Legislature, 4; Publications Board, 4; Executive Council, 4.

Louise Caviness Fuquay Springs, N. C.

Home Economics and Science
Home Economics Club, 1, 2, 3, 4; Y. W. C. A., 1, 2; *Lanier Society*, 1, 2, 3; Women's Athletic Association, 1, 2; Big Sister, 2; House Committee, 1, Vice-President, 2; Student Legislature, 2; Courtesy Card Committee, 3; State President of Home Economics Clubs, 4.



CLASS



First Row:

Annie Thompson Cates Hurdle Mills, N. C.

Grammar Grade Education

Amos O. Clark Greenville, N. C.

Business Education and English

Y. M. C. A., 1, 2; Men's Day Student Committee, 1, 2, 3; *Teco Echo* Staff, 2, 3, 4, Associate Editor, 2, 3, Art and Features, Summer, 3; Co-Editor-in-Chief, 4; Veterans Club, 3, 4; *Maistril*, 3; Publications Board, 4; Student Legislature, 4; Executive Council, 4; Pi Omega Pi, 3, 4; Phi Sigma Pi, 3, 4.

Francis Marion Coiner Newport News, Va.

English and History

Phi Sigma Pi, '43, '46, '47, Secretary, '46; Lanier Society, '41; Men's Judiciary, '41, Chairman, '42; Art Editor *Pieces of Eight*, '41, '42, Feature Editor, '42; *Teco Echo* Reporter, '41, Associate Editor, '46; Veterans Club, '46, '47, *Maistril*, '46; Student Legislature, '41, '42, '46, '47; International Relations Club, '41, '42; Vice-President House Committee, '46; Advisory Board, '46, '47; Constitution Committee, '46; President Senior Class, *Who's Who Among Students in American Colleges and Universities*, '47.

Dorothy Coltran Rougemont, N. C.

Primary Education

Louisburg College, 1, 2; Y. W. C. A., 3; Association for Childhood Education, 3, 4.

Mary Sue Cotton Kipling, N. C.

Home Economics and Social Science

Alpha Alpha Sigma, 2, 3, 4, President, 4; College Band, 1; Home Economics Club, 1, 2, 3, 4, Secretary, 3; Jarvis Forensic Club, 2, 3, 4; Poe Society, 1, 2, 3, 4; Student Legislature, Summer, '46, 4; Y. W. C. A., 2, 3, 4.

Second Row:

Mrs. Ann Satterwhite Cottrell Granville, N. C.

Home Economics and Science

Ann Cox Greenville, N. C.

English and Social Science

Paul U. Craver Lexington, N. C.

Business Education and Social Science

Y. M. C. A., 1, 2, 3, President, 2, 3; State Planning Board, 3; Wesley Foundation, 2; Student Legislature, 2, 3; Varsity Club, 2, 3; Alpha Alpha Sigma, 2, 3; Beta Kappa Chapter of Pi Omega Pi, 3; Cheerleader, 3; International Relations Club, 3; Veterans Club, 1, 2; Chi Pi Players, 3.

Mary Lou Daniel Stem, N. C.

Primary Education

Association for Childhood Education, 1, 2, 3, 4; Emerson Society, 1; Poe Society, 3, 4; Women's Chorus, 2, 3, 4; Chi Pi Players, 3, 4; Big Sister, 3.

Gordon Bell Davis Beaufort, N. C.

English and History

Treasurer Freshman Class; Y. M. C. A., 1, 2, Cabinet, 1, 2; Lanier Society, 1, 2; International Relations Club, 2, 3; *Teco Echo* Reporter, 3; English Club, 3, 4; Phi Sigma Pi, 2, 3, 4, Treasurer, 2, 3; Men's Judiciary, 2, 3, Chairman, 3; Vice-President House Committee, 2; Chi Pi Players, 3, 4; *Five Admirable Cricketers*, 1 *Remember Mama, Soon White and the Seven Dwarfs*, *The Family Portrait*; Wesley Foundation Council, 2, 3, 4, Treasurer, 3, President, 4; College Marshal, 3; *Who's Who Among Students in American Colleges and Universities*.

Third Row:

Doris Dawson Dunn, N. C.

Home Economics and Science

Home Economics Club, 1, 2, 3, 4; Poe Society, 2, 3; Y. W. C. A., 1, 2, 3, 4; College Choir, 1, 2, 3, 4.

Nancy Dilday Ahoskie, N. C.

Primary Education

Association for Childhood Education, 1, 2, 3, 4; Poe Society, 2, 3, 4, Secretary, 3; House Committee, 4; College Marshal, 4; Big Sister, 4.

Agnes Dillingham Burlington, N. C.

Social Science and English

Tilly Eakes Fuquay Springs, N. C.

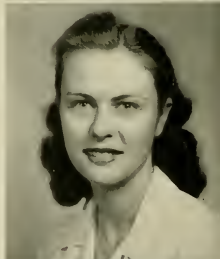
English and Social Science

Louisburg College, 1, 2; College Marshal, 4; *Senior Superlatives*.

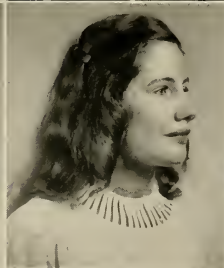
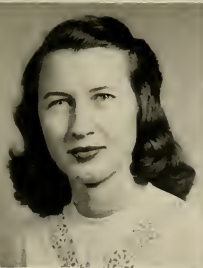
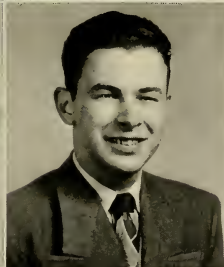
Marian Early Aulander, N. C.

Primary Education

Association for Childhood Education, 1, 2, 3, 4, Secretary and Treasurer, 3; Poe Society, 2, 3, 4; Marshal, 3; House Committee, 4; Elections Committee, 2, 3; Social Committee, 4.



CLASS





— Miss Sophie Fischel

Vaughan, North Carolina



Miss Marilyn Maxwell —

Greenville, North Carolina

First Row:

Geraldine Edwards Greenville, N. C.

College Band, 2, 3, 4; Music Education Club, 4; *Business Education and Music*
Commerce Club, 4.

Edna Jane Eldridge Dunn, N. C.

Business Education and History
Commerce Club, 1, 2, 3, 4.

Nell Rose Ellis Gatesville, N. C.

Science and Social Science
Museum Club, 1, 2, President, 2; House Committee, 2, 3, Secretary, 2, President, 3; Women's Judiciary, Summer, '47; Alpha Alpha Sigma, 2, 3, Vice-President, 3; International Relations Club, 1, 2, 3; Lanier Society, 1, 2, 3; Chi Psi Players, 1, 2, 3.

Della Evans Hertford, N. C.

Home Economics and Social Science
International Relations Club, 4; Home Economics Club, 1, 2, 3, 4; Y. W. C. A., 1, 2, 3.

Sophie Fischel Vaughan, N. C.

Physical Education and Social Science
Class President, 1; Student Legislature, 1; *Tecum* staff, 1, 2, 3; Emerson Society, 1, 2, 3, Marshal, 1, 2; Women's Athletic Association, 1, 2, 3, Cabinet, 1, Soccer Varsity, 2, Field Hockey Varsity, 2, Basketball Varsity, 2, 3, Head of Basketball, 1; Budget Committee, Summer, '46; House Committee, Summers, '45, '46; Secretary Student Legislature, Summer, '46; International Relations Club, 1, 2; Manager of Student Stores, Summer, '45; Y. W. C. A., 2; *Tecum Echo* Staff, 2; *Feature*, 3; Delegate to Columbia Scholastic Press Association Convention, 2.

Second Row:

Leon B. Fleming, Jr. Greenville, N. C.

Business Education and Music Education
College Choir, 1, 3; College Singers, 3, 4; Music Education Club, 3, 4; Commerce Club, 1, 2, 3, 4; Alumni Daughters and Sons, 1.

Ruth Kathleen Floyd Cerro Gordo, N. C.

Home Economics and Science

Jean Fodrie Beaufort, N. C.

Physical Education and Social Science
Louisburg College, 1, 2; Women's Athletic Association, 3, 4; Poe Societies, 3, 4; International Relations Club, 3, 4.

Frances Gardner Pikeville, N. C.

Grammar Grade Education

Marie Gentry Roxboro, N. C.

Grammar Grade Education

Third Row:

Virginia Doris Gibson Aberdeen, N. C.

Grammar Grade Education
Flora Mardonald College, 1, 2; Lanier Society, 3, 4.

Katheryn Gibson Wilmington, N. C.

Social Science and English

Mrs. Alma Lee Jones Grady Winterville, N. C.

Grammar Grade Education

Edna Rose Graham Turkey, N. C.

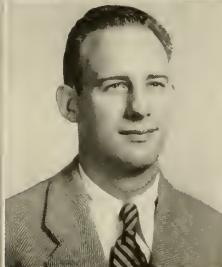
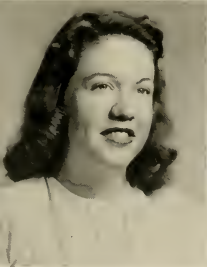
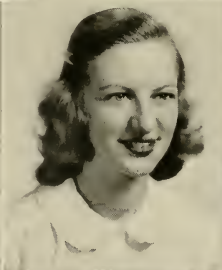
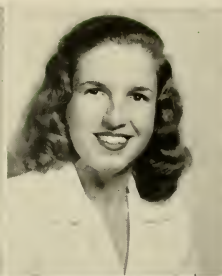
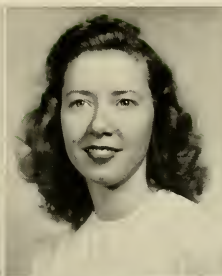
Business Education and History
Louisburg College, 1; Poe Societies, 2, 3; International Relations Club, 2, 3.

Wannie F. Gray Clarksburg, W. Va.

History and English



CLASS



SENIOR

First Row:

Mildred Griggs Point Harbor, N. C.

Primary Education
Association for Childhood Education, 1, 2, 3, 4; Emerson Society, 1, 2; Poe Society, 3, 4; Y. W. C. A., 1, 2, 3; Women's Chorus, 1, 2, 3, 4; Big Sister, 2, 3.

Dixie Lee Gurley Goldsboro, N. C.

Grammar Grade Education
Poe Society, 2, 3, 4; Y. W. C. A., 1, 2, 4; Association for Childhood Education, 1; Future Teachers of America, 2, 3, 4.

Lavina Harper Pikeville, N. C.

Home Economics and Social Science
Home Economics Club, 1, 2, 3; Chi Pi Players, 2, 3; Y. W. C. A., 1, 2, 3, Cabinet, 3; International Relations Club, 2, 3; House Committee, 2.

Miriam Harper Spring Hope, N. C.

Music and English
Chairman Wesley Foundation Players, 1; Wesley Foundation Council, 1; *Teco Echo* Staff, 1; Entertainment Committee, 1, 2, 3, 4; College Choir, 2, 3, 4, Secretary, 2; College Singers, 3, 4; College Band, 3; College Marshal, 3; Chi Pi Players, 4.

Hazel Marie Harris Greenville, N. C.

English and Social Science
Emerson Society, 2, 3, 4; Women's Chorus, 2; English Club, 3, 4; Science Club, 3; Y. W. C. A., 3; International Relations Club, 4.

Second Row:

Annie Doris Heath Kinston, N. C.

Grammar Grade Education
Y. W. C. A., 1, 4; College Choir, 2, 3; Art Club, 2, 3, 4, Publicity Chairman, 3, Secretary and Treasurer, 4; Chi Pi Players, 3, 4; Poe Society, 3, 4; Association for Childhood Education, 1; Big Sister, 2.

Juanita Herring Goldsboro, N. C.

Home Economics and Science
Science Club, 1, 2, 3, 4; Home Economics Club, 2, 3, 4; Big Sister, 2, 3.

Mrs. Ruth Beddard Herriott Winterville, N. C.

Business Education and History

Joseph Walker Hines Washington, N. C.

Mathematics and Social Science
Veterans Club, 1, 2; Mathematics Club, 2, 3; International Relations Club, 1, 2; Student Federalist Club, 3.

Margaret Honeycutt Clinton, N. C.

French and Physical Education

Third Row:

Keith C. Hudson Thomasville, N. C.

Science and Social Science

Mary Moseley Humphrey Kinston, N. C.

Home Economics and Science
Home Economics Club, 4; Science Club, 1, 2; Emerson Society, 1, 2, 3, 4, Secretary, 4.

Elsie Jenkins Wallace, N. C.

Home Economics and Social Science

Mrs. Georgia King Jenkins Durham, N. C.

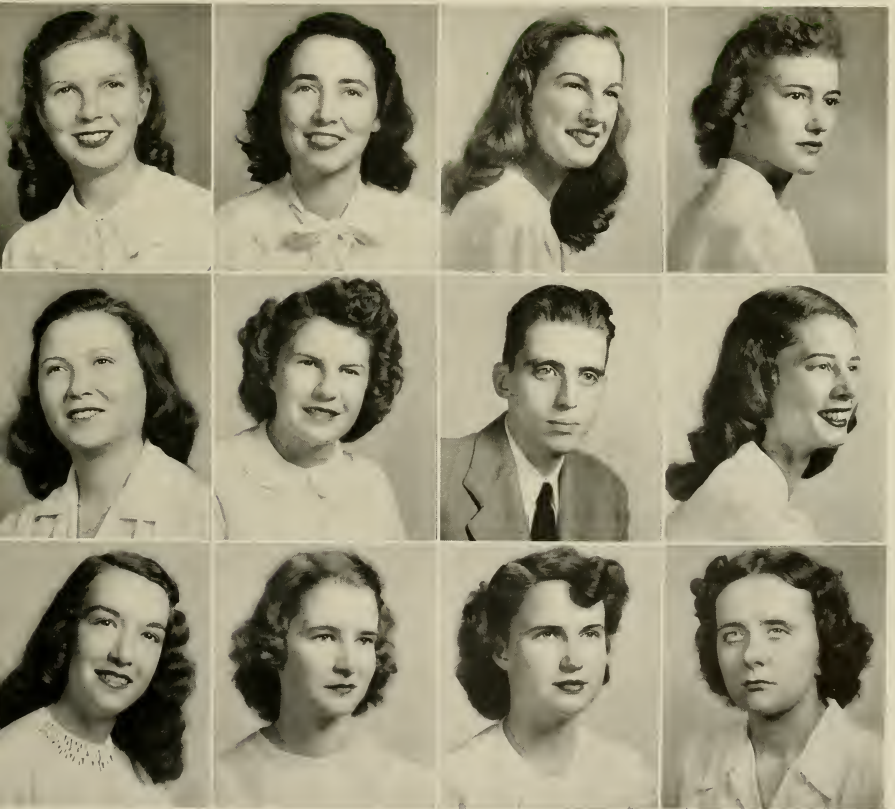
History and Mathematics
Student Legislature, 1, 2; Y. W. C. A., 1, 2, 3, 4, Treasurer Freshman "Y", Cabinet, 2; Lanier Society, 1, 2, 3; Mathematics Club, 1, 2, 3, 4; Vice-President Student Legislature, 3; *Who's Who Among Students in American Colleges and Universities*, 3.

Suzanne Jernigan Selma, N. C.

Social Science and English
International Relations Club, 2, 3, 4; Future Teachers of America, 2, 3; Women's Chorus, 2, 3, 4; Canterbury Club, 1, 2, 3, 4.



CLASS



SENIOR

First Row:

- Roxie Geraldine Johnson Rose Hill, N. C.
Home Economics and Science
- Ruth Johnson New Holland, N. C.
Business Education and English
- Commerce Club, 1, 2, 3, 4; *Teco Echo* Reporter, 2; Beta Kappa Chapter of Phi Omega Pi, 3, 4, Vice-President, 4; Y. W. C. A., 1, 2, 3; Budget Committee, 4.
- Josie Joyner Sharpsburg, N. C.
Science and Social Science
- Mathematics Club, 1; Y. W. C. A., 1; Science Club, 1, 2, 3, 4, Treasurer, 3, Vice-President, 4; International Relations Club, 3, 4.
- Jack E. Kimbrell Waxhaw, N. C.
Social Science and English
- Wingate Junior College, 1, 2; Student Legislature, 4; International Relations Club, 3, 4, President, 4; English Club, 3, 4; Jarvis Forensic Club, 1; College Choir, 3, 3; Y. W. C. A., 3, 4; Baptist Council, 4.
- Doris E. King St. Pauls, N. C.
Primary Education
- Y. W. C. A., 1, 2, 3, 4, Cabinet, 2; Association for Childhood Education, 2, 3, 4.

Second Row:

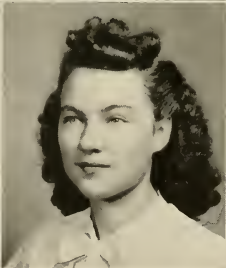
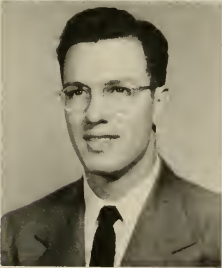
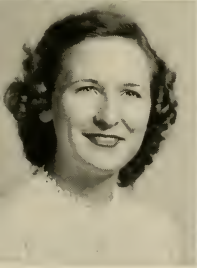
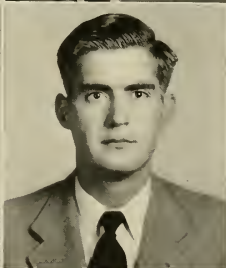
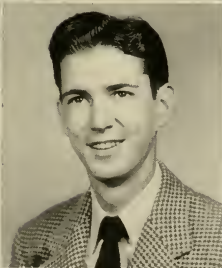
- Arline Koonce Richlands, N. C.
Home Economics and Social Science
- Home Economics Club, 2, 3, 4.
- Ruth Krank Poplar Branch, N. C.
English and History
- Y. W. C. A., 1, 2, 3, 4, Forum Chairman, 3; English Club, 2, 3, 4; Big Sister, 2; Elections Committee, 3; Advisory Board, 4; College Marshal, 3, 4; Student Legislature, 3, Summer, '47; Nominating Committee, 3; Delegate to National Student Association, 3; International Relations Club, 1, 2, 3, 4; Emerson Society, 2, 3; Poe Society, 4; Features, 4.
- Thomas G. Larkins Scotia, N. Y.
English and Social Science
- Teco Echo* Staff, 4; Secretary Men's Day Student Committee, 3, 4; English Club, 4.
- Joe Lassiter Conway, N. C.
Mathematics, Science, and Physical Education
- Y. M. C. A., 1, 2, 3, 4, Treasurer, 2; Chi Psi Players, 1, 2, Senior Play, '44; College Band, 1, 2, 3, 4, President, 4; College Choir, 1, 2; Mathematics Club, 1, 2; Science Club, 1; Phi Sigma Pi, 2, 3, Historian, 4; Basketball, 1, 2; Baseball, 1, 2; Men's Judiciary, 2; Chairman, 4; House President, 2, Vice-President, 4; College Dance Band, 2, 3, 4; Student Legislature, 4; Executive Council, 4; Handbook Committee Chairman, 4; Who's Who Committee, 4; Veterans Club, 3; Men's Athletic Association, 3, 4; Senior Superlative, *Who's Who Among Students in American Colleges and Universities*, 3.
- Ruth Muriel Lassiter Smithfield, N. C.
Science and Home Economics
- Home Economics Club, 1, 2, 3, 4, Publicity Chairman, 3, Constitution Chairman, 4; Science Club, 4; Art Club, 1, 2, 3; Publicity Chairman, 1, Secretary, 2, President, 3; Y. W. C. A., 1, 2, Big Sister, 2; Lanier Society, 1, 2; Handbook Committee, 3; Baptist Student Union, 1; Student Legislature, 2, 3; Senior Superlative.

Third Row:

- Rena Lowery Trenton, N. C.
Business Education and Mathematics
- Y. W. C. A., 1, 2, 3, 4, Secretary, 2; Mathematics Club, 1, 2, 3, 4; Mathematics Club, 1, 2, 3, 4, President, 4; Commerce Club, 1, 2, 3, 4; Emerson Society, 1, 2, 3, 4; Student Legislature, 4; Wesley Foundation, 1, 2.
- Corinne Manning Bethel, N. C.
Business Education and Mathematics
- Y. W. C. A., 1, 2; Mathematics Club, 2, 3, 4; *Teco Echo* Representative, 3, Social Chairman, 4; Commerce Club, 2, 3, 4, Treasurer, 3; Poe Society, 2, 3, 4; Big Sister, 3.
- Fred H. Martin Asheville, N. C.
Science and English
- Brevard Junior College, 1, 2; Vice-President Veterans Club, 3; House President, Summer, '46; Phi Sigma Pi, 3, 4; Jarvis Forensic Club, 4; Y. M. C. A., 3, 4; Science Club, 4; President Student Legislature, 3, 4, Summers, '46 and '47; Senior Superlative, *Who's Who Among Students in American Colleges and Universities*.
- Eleanor Glenn Mason Newport, N. C.
Business Education and Spanish
- W. C. U. N. C., 1; Commerce Club, 2, 3, 4; Phi Sigma Chapter of Sigma Pi Alpha, 3, 4.
- Marilynn Maxwell Greenville, N. C.
English and Music Education
- Lanier Society, 1; Emerson Society, 2, 3; Commerce Club, 1; Music Education Club, 2, 3; English Club, 1, 2, 3; Y. W. C. A., 1, 3, Big Sister, 2; Associate Editor *Teco Echo*, 2, Business Manager *Teco Echo*, Summer, '47; Poetry Editor *Pieces of Eight*, 2; Associate Editor *Tecoom*, 2; Editor *Tecoom*, 3; Who's Who Committee, 3; Chairman Publications Board, 3; Student Legislature, 3; Women's Chorus, 2; College Singers, 2, 3; Delegate to Columbia Scholastic Press Association Convention, 2; Features, 3; *Who's Who Among Students in American Colleges and Universities*.



CLASS





— Miss Mercedes Ange

Jamesville, North Carolina



Miss Hilda Riley —

Wilson, North Carolina

SENIOR

First Row:

- Mattie Harris Mayo Greenville, N. C.
Business Education and Mathematics
- Wiley S. Mayo, Jr. Mesic, N. C.
Science and Social Science
- Mrs. Ann W. Mercer Fountain, N. C.
Primary Education
- Louise Mewborn Hookerton, N. C.
English and History
 English Club, 2, 3, 4, Vice-President, 3, President, 1; International Relations Club, 2, 3, 4; Jarvis Forensic Club, 2; Lanier Society, 1, 2, 3, 4; Y. W. C. A., 1, 2, 3, 4.
- Della Jane Mobley Williamston, N. C.
Primary Education

Second Row:

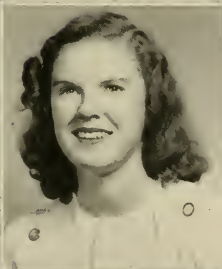
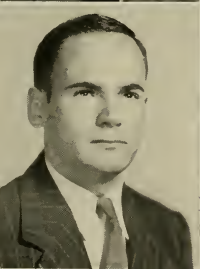
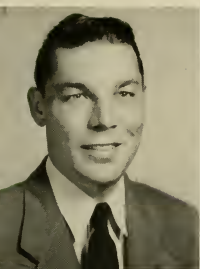
- Jocelyn Moore Delco, N. C.
Primary Education
- Tom Moseley Kinston, N. C.
Physical Education and History
- Lottie Murphy Warrenton, N. C.
Grammar Grade Education
 Y. W. C. A., 1, 4, Big Sister, 2; Association for Childhood Education, 3, 4, Secretary-Treasurer, 4; House Committee, 3, 4, Secretary, 4; Baptist Student Council, 4.
- Rebecca Murphy Henderson, N. C.
Physical Education and Mathematics
 Mathematics Club, 1, 2, 3, 4; Women's Athletic Association, 1, 2, 3, 4, Cabinet, 1, 2, 3; Volleyball Varsity, 2, 3, Basketball Varsity, 2, 3, Softball Varsity, 3; Poe Society, 1, 2; Alumni Daughters and Sons, 1, 2; Y. W. C. A., 4; President House Committee, 4; *Who's Who Among Students in American Colleges and Universities*.
- Betty Sue McGee Monroe, N. C.
Primary Education
 Y. W. C. A., 1, 2, 3; Lanier Society, 1, 2, 3; Association for Childhood Education, 1, 2, 3, 4, Publicity Director, 2, Corresponding Secretary, 3, Vice-President, 1; Student Legislature, 4; Women's Chorus, 2, 3, 4.

Third Row:

- Daphne Olena Pake Beaufort, N. C.
Home Economics and Social Science
 Flora Macdonald College, 1; Home Economics Club, 2, 3, 4; International Relations Club, 3, 4; Poe Society, 2, 3, 4, Secretary, 4; House Committee, 4.
- Jeannette O. Parker Sunbury, N. C.
Social Science and Geography
 Poe Society, 1, 2, 3, 4; International Relations Club, 1, 2, 3, 4.
- Mary Lee Parker Rocky Mount, N. C.
Music Education and English
 Meredith College, 1, 2; University of North Carolina, Summer, '46; Field Hockey Varsity, 3; Alumni Daughters and Sons, 3, 4; English Club, 4; College Choir, 3, 4; College Orchestra, 3; Music Education Club, 4.
- Mattie V. Parker Mount Olive, N. C.
Physical Education and Mathematics
 Women's Athletic Association, 1, 2, 3, 4, Volleyball Varsity, 2, Softball Varsity, 3, 4, Basketball Varsity, 3, 4, Field Hockey Varsity, 3; Y. W. C. A., 1, 2; Poe Society, 1, 2; Mathematics Club, 2.
- Myrtle Agnes Paul Pike Road, N. C.
Business Education and Social Science
 Lanier Society, 1, 2, 3, 4; Alpha Alpha Sigma, 3, 4, Secretary, 3; Commerce Club, 1, 2, 3, 4.



CLASS



SENIOR

First Row:

Myrtle Peedin Willow Springs, N. C.

Home Economics and Science
Home Economics Club, 1, 2, 3, 4; Lanier Society, 1, 2, 3, 4.

Evelyn Peele Lewiston, N. C.

Primary Education
House Committee, 2, 3; Vice-President, 3; Chairman Women's Judiciary, 4; Executive Council, 4; Emerson Society, 2, 3; Women's Athletic Association, 2, 3; Y. W. C. A., 2, 3, 4; Association for Childhood Education, 4; Women's Chorus, 3; Big Sister, 4.

Bernese Pender Goldsboro, N. C.

English and French

Nell Perry Louisburg, N. C.

Home Economics and Science
Home Economics Club, 1, 2, 3, 4; Science Club, 1, 2, 3, 4; Y. W. C. A., 1, 2, 3; Alumni Daughters and Sons, 1, 2, 3; President, 3; Student Legislature, 3; Big Sister, 2, 3; Baptist Student Union Council, Summer, '45.

Sarah Pickett Kenansville, N. C.

Physical Education and Business Education
Women's Athletic Association, 1, 2, 3; Emerson Society, 1, 2, 3, 4; Secretary, 3.

Second Row:

O. Beatrice Player Greenville, N. C.

Business Education and History

Rachel Pleasant Angier, N. C.

Music Education and Business Education
Music Education Club, 3, 4; Vice-President, 1; Women's Chorus, 2, 3, 4; College Band, 2, 3, 4; Commerce Club, 4; Lanier Society, 1, 2, 3, 4; President, 3; Marshal, 1; House Committee, 2, 3; Big Sister, 3.

Richard L. Powers St. Pauls, N. C.

English and Science

Annette Pridgen Warsaw, N. C.

English and Physical Education
English Club, 2, 3; Jarvis Forensic Club, 2, 3; Women's Athletic Association, 2, 3, 4; Business Manager Pieces of Eight, 4.

Patsy Pridgen Elm City, N. C.

Physical Education and Mathematics
Mathematics Club, 4; Women's Athletic Association, 1, 2, 3, 4; Cabinet, 4; Y. W. C. A., 1, 2, 3; Recreation Chairman, 2, 3; Women's Chorus, 2, 3, 4; Cheerleader, 2, 3, 4; College Marshal, 4; Big Sister, 2, 3, 4; Wesley Foundation Council, 2, 3; Chi Pi Players, 3.

Third Row:

Mildred Pruitt Danville, Va.

Business Education and English
Commerce Club, 1, 2, 3, 4; Pi Omega Pi, 3, 4; Historian, 3; Y. W. C. A., 1; Jarvis Forensic Club, 2, 3, 4; Vice-President, 2; Secretary and Treasurer, 3, 4; Secretary of Student Legislature, 4.

Issac N. Reynolds Columbia, N. C.

Business Education and English
Commerce Club, 1, 2, 3; Pi Omega Pi, 2, 3, 4; Historian, 4; Secretary International Relations Club, 4; Student Federalist Club, 4; Canterbury Club, 1, 2, 3; Treasurer, 3; English Club, 4; Director of News Bureau, Summer, '47; Veterans Club, 3, 4.

Hilda Gray Riley Wilson, N. C.

Primary Education
Lanier Society, 1, 2; *Teco Echo* Reporter, 1; *Poe Society*, 3, 4; Y. W. C. A., 1, 2, 3; Association for Childhood Education, 1, 2, 3, 4; Publicity Manager, 3; Big Sister, 2; *Teco Echo* Staff, 1, 2; Associate Editor, 2; Assistant Editor Pieces of Eight, 3; Editor, 4; Publications Board, 3, 4; Student Legislature, 4; *Features*, 4.

Emily Jean Roberson Parmele, N. C.

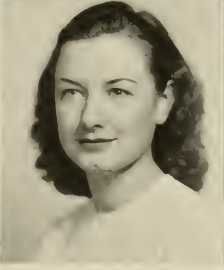
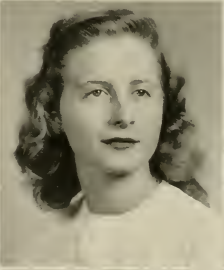
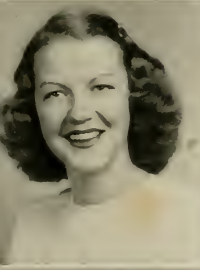
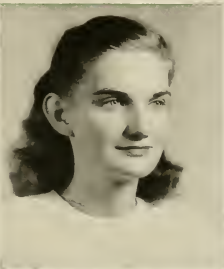
Home Economics and Social Science
Home Economics Club, 2, 3, 4; Y. W. C. A., 1, 2, 3; Cabinet, 3; *Poe Society*, 3; Wesley Foundation Council, 2, 3; International Relations Club, 4; Big Sister, 2.

Joyce Roberson Spring Hope, N. C.

Home Economics and Science



CLASS



SENIOR

First Row:

Mary Robinson Elizabethtown, N. C.

Science and Physical Education
Women's Athletic Association, 1, 2, 3, 4; Lanier Society, 1, 2, 3, 4; Y. W. C. A., 1.

Aubrey Rogers Manteo, N. C.

Business Education and Social Science
Oak Ridge Military Institute, 1, 2; Historian Student Legislature, 3, 4; Commerce Club, 3; Phi Sigma Pi, 3, 4; Catholic Students Club, 3; Vice-President Chi Pi Players, 3, 4; *The Admirable Cricketer*, 1; *Remember Mama, Snow White and the Seven Dwarfs*.

Janet Earle Rose Nashville, N. C.

Primary Education

Marie Rouse Greenville, N. C.

Business Education and Mathematics

J. Robert Russ, Jr. Washington, N. C.

Business Education and Science
Jarvis Forensic Club, 2, 3; Debating Team, 3; International Relations Club, 2, 3; Veterans Club, 2, 3; Commerce Club, 2, 3.

Second Row:

Leslie Earl Sadler Winterville, N. C.

Business Education and English
Veterans Club, 1, Historian, 1.

Betty Jean Sanders Jonesboro, N. C.

Grammar Grade Education

Earl L. Sawyer Jamesville, N. C.

Mathematics and Social Science
Y. M. C. A., 1, 2, 3; Secretaries, 2, 3; Phi Sigma Psi, 2, 3; Chi Pi Players, 1, 2, 3; Veterans Club, 1, 2, 3.

Annie Ruth Sealey Barnesville, N. C.

Home Economics and Science

Barbara Selby Dudley, N. C.

English and History
Foe Society, 1, 2, 3, 4; English Club, 1; International Relations Club, 3, 4; Women's Judiciary, Summer, '47; President Canterbury Club, 4.

Third Row:

Camilla Selby Engelhard, N. C.

English and Social Science
Women's Athletic Association, 1, 2; Lanier Society, 1, 2, 3, 4; Y. W. C. A., 1, 2, 3, 4; Commerce Club, 1, 2; Secretary Junior Class; Associate Business Manager Team, 3, 4; Circulation Manager *Pages w' Eight*, 4; Big Sister, 2; *Features*, 4.

Amos Sexton Montgomery, Ala.

Physical Education and Social Science

Mrs. Christine Gray Smith Kinston, N. C.

Science and Physical Education
Pearce College, 1; Vice-President Junior Class; Y. W. C. A., 2, 3, 4; Cabinet, 3; Delegate to Y. W. and Y. M. C. A. Southern Regional Conference, 3; Women's Athletic Association, 2, 3, 4; Cabinet, 3; Emerson Society, 2, 3, 4; Treasurer, 4; Basketball Varsity, 2, 3; Softball Varsity, 2, 3; Big Sister, 3; Science Club, 2, 3, 4; Publicity Chairman, 3.

Mrs. Edith Sutton Smith La Grange, N. C.

Primary Education

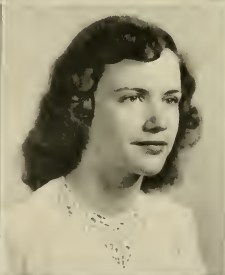
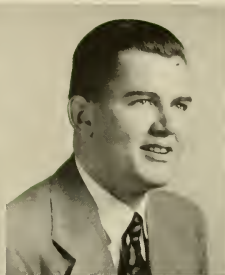
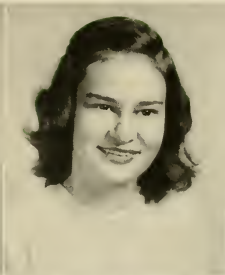
Jake Smith Greenville, N. C.

Science and Mathematics



E. C. T. C.

CLASS





Miss Camilla Selby

Engelhard, North Carolina



Miss Mattie Harris Mayo —

Greenville, North Carolina

SENIOR

First Row:

- James C. Smith Greenville, N. C.
English and Business Education
- Mary Speight Windsor, N. C.
Grammar Grade Education
 Future Teachers of America, 1, 2; Y. W. C. A., 3, 4; Alumni Daughters and Sons, 1, 2.
- Edith Starling Clinton, N. C.
Home Economics and Science
- Daisy Virginia Steele Winton, N. C.
Science and Mathematics
 Poe Society, 1, 2, 3, 4; *Tecum Reporter*, 2, President, 3; Y. W. C. A., 1, 2, 3, 4; Big Sister, 2; Junior Class *Tecum Echo Reporter*, Secretary Sophomore Class, Women's Chorus, 3, 4; Handbook Committee, 3; Student Legislature, 3; Vice-Chairman Women's Judiciary, 1; Executive Council, 4; Assistant Editor *Pieces o' Eight*, 4.
- Clarke Stokes Hertford, N. C.
Physical Education and History



Second Row:

- Elizabeth Sutton La Grange, N. C.
Primary Education
 Association for Childhood Education, 3, 4, Executive Board, 4, Historian, 4.
- Lillian Sanders Talton Zebulon, N. C.
Grammar Grade Education
 Campbell College, 1.
- Mrs. Peggy Adams Tatarski Reidsville, N. C.
Home Economics and Science
 Home Economics Club, 1, 2, 4; Cheerleader, 2; College Marshal, 3; Poe Society, 1; Y. W. C. A., 1, 2, 3; Senior Superlative.
- Fountain Taylor Richlands, N. C.
Mathematics and Science
- Leyta Ozell Taylor Robersonville, N. C.
Home Economics and Science



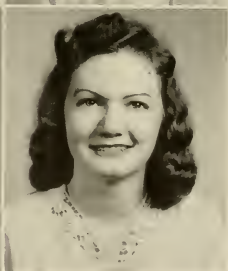
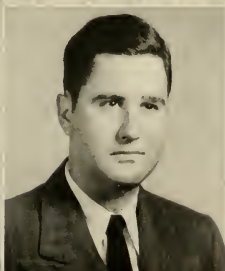
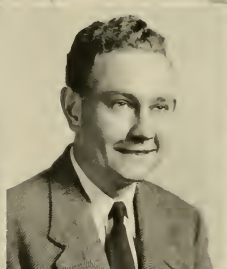
Third Row:

- Margaret Eleanor Taylor Richlands, N. C.
Mathematics and English
 Secretary and Treasurer Mathematics Club, 3, 4.
- Joe Tew Thomasville, N. C.
Business Education and Social Science
- John F. Thigpen, Jr. Williamston, N. C.
Science and Physical Education
 Mars Hill College, 1, 2; Phi Sigma Pi, 3, 4, President, 4; Varsity Club, 4; Student Legislature, 4; Manager of Baseball Team, 3; Senior Superlative, *Who's Who Among Students in American Colleges and Universities*.
- Margery Lee Thomas Warsaw, N. C.
Primary Education
 Y. W. C. A., 1, 2, 3, 4; College Choir, 1, 2; Business Staff *Tecum*, 2; Lanier Society, 1, 2; Poe Society, 3, 4, President, 4; Publications Board, 3; Social Committee, 3; Association for Childhood Education, 1, 2, 3, 4; Business Staff *Pieces o' Eight*, 3; Handbook Committee, 4; Women's Athletic Association, 1, 2, 3; Student Legislature, 4.
- Marjorie Louise Thomas Conetoe, N. C.
Primary Education
 International Relations Club, 1, 2; Emerson Society, 2, 3; Association for Childhood Education, 2, 3, 4; Baptist Student Union, 1, 2, 3, 4, Secretary, 4.



E. C. T. C.

CLASS



SENIOR

First Row:

Janice Trebuchon Jonesboro, N. C.

Primary Education

Elizabeth Trippe Greenville, N. C.

English and Social Science

English Club, 2, 3, 4; Chi Pi Players, 3, 4. *Snow White and the Seven Dwarfs, The Family Portrait; Jarvis Forensic Club, 2, 3, 4.*

Wanda Tyndall Pink Hill, N. C.

Music Education and French

Annie Crisp Warren Conetoe, N. C.

Business Education and History

International Relations Club, 1, 2, 3, 4; Commerce Club, 1, 2, 3, 4; Lanier Society, 1, 2, 3, 4.

Nell Marie Webster Leaksville, N. C.

Mathematics and Social Science

Lees-McRae College, 1, 2; Emerson Society, 3, 4. Vice-President, 1; Math Club, 3; College Choir, 1; College Marshal, 4.

Second Row:

Dorothy Wheeler Benson, N. C.

Home Economics and Social Science

Hennie Ruth Whichard Greenville, N. C.

Business Education and English

Secretary Freshman Class; Secretary Women's Day Student Committee, 1, Vice-President, 3; Women's Chorus, 1; English Club, 1, 2; Commerce Club, 1, 2; Canterbury Club, 1, 2, 3, 4; Pi Omega Pi, 2, 3, 4; Social Committee, 3, 4; Student Legislature, 3; College Choir, 3, 4, President, 4; *Snow White and the Seven Dwarfs; Secretary Senior Class; Senior Superlative, Who's Who Among Students in American Colleges and Universities.*

Mary Andrews Whichard Greenville, N. C.

Business Education and Spanish

Canterbury Club, 1, 2, 3, 4, Vice-President, 4; Day Student Committee, 1; Commerce Club, 1; Women's Chorus, 1, 2; Sigma Pi Alpha, 2, 3, 4, President, 3; Student Legislature, 1, 3; College Choir, 3, 4; College Singers, 3, 4.

Betty Jean Whitehurst Bethel, N. C.

Grammar Grade Education

Frances Young Whitehurst Bethel, N. C.

Grammar Grade Education

Third Row:

Marietta Whitfield Kinston, N. C.

Primary Education

Y. W. C. A., 1, 2, 3, 4; Association for Childhood Education, 3, 4, Executive Board, 4, Second Vice-President, 4.

Alma Lee Whitley Enfield, N. C.

Music Education and English

Alumni Daughters and Sons, 1, 2, 3, 4; Music Education Club, 3, 4; Courtesy Card Committee, 1, 2, Chairman, 2; Y. W. C. A., 3; College Band, 1, 2, 3; Women's Chorus, 1, 2, 3, 1; College Singers, 1, 3, 4; *Teco Echo Staff, 1, 2; Lanier Society, 1, 2, 3, 4.*

Beaufort Williams Inez, N. C.

Home Economics and Science

Associate Editor *Tecoco*, 1, 2, 3, 4; Home Economics Club, 1, 2, 3, 4, Vice-President, 2; Big Sister, 2, 3; Y. W. C. A., 1, 2; *Poe Society, 3, 4.*

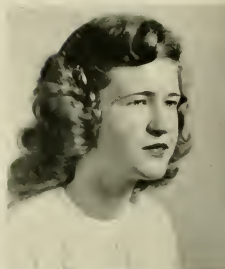
Mrs. Betty Cole Williams Forest City, N. C.

Business Education and Mathematics

Y. W. C. A., 1, 2, 3, 4, Cabinet, 2; Commerce Club, 1, 2, 3, 4; Math Club, 1, 2, 3, 4; Pi Omega Pi, 2, 3, 4; President House Committee, 3; Women's Judiciary, 3; College Marshal, 3; Lanier Society, 1, 2, 3, 4.

Ray Wooten Clinton, N. C.

Social Science and Physical Education



CLASS





— Miss Ruth Krank
Poplar Branch, North Carolina

East Carolina —

at night



WHO'S WHO

Among Students

First Row: Alma Arrington, Annie T. Cates, Francis M. Coiner, Gordon Davis, Nell Rose Ellis.



Second Row: Mrs. Georgia King Jenkins, Fred Martin, Mattie Harris Mayo, Mari-lynn Maxwell, Rebecca Mur-phy.



Third Row: Evelyn Peele, Dorothy Powell, Clarke Stokes, John Thigpen, Hen-nie Ruth Whichard.



n American Colleges and Universities



These students have distinguished themselves in scholarship, leadership, and citizenship. For their outstanding work this honor has been bestowed on them.

MRS. FRANCES S. BAILEY
Most Athletic Girl



BELVIN BECK
Best Dressed Boy



HUBERT BERGERON
Most Original



Senior

JOE LASSITER
Best Dancer, Best Looking Boy



RUTH LASSITER
Most Likely to Succeed



FRED MARTIN
Best Leader, and Friendliest Boy



Superlatives

ELIZABETH CARTER
Most Intellectual



TILLY EAKES
Best Dressed Girl



PEGGY HUNNECUTT
Most Popular, Best Dancer, and Best All-Round Girl





MATTIE HARRIS MAYO
Most Sincere

ANNETTE PRIDDEN
Most Studious

BARBARA SELBY
Wittiest

Senior



AMOS SEXTON
Most Athletic Boy

CLARKE STOKES
Most Popular and Best All-Round Boy

MRS. PEGGY A. TATARSKI
Prettiest

Superlatives



JOHN THIGPEN
Best Personality

HENNIE RUTH WHICHARD
Most Talented and Friendliest Girl



JUNIOR CLASS

Left to Right: Ann Beddard, secretary; John Heath, vice-president; June Bass, president; Nita Ballenger, treasurer.

THAT ONE LAST YEAR is getting closer, and we are beginning to feel that we have a great deal of work to do before we graduate. As we move on, we hope to make our last year the best.

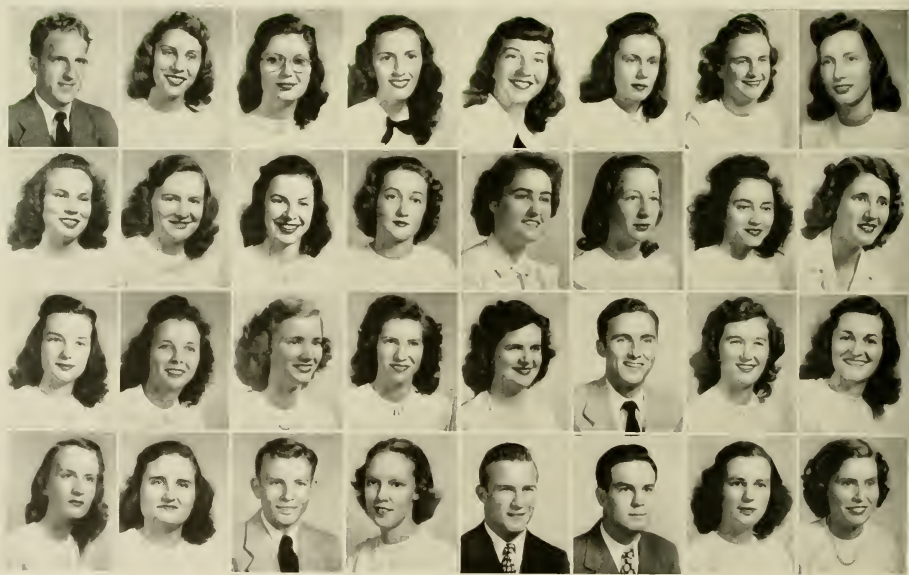
First Row: Edmond J. Acree, Rosa Asbell, Mary Lou Austin, Juanita Balenger, Jacqueline Barnhill, June Bass, Mary Ann Bass, Ruth Bass.

Second Row: Etta Bazemore, Sarah Bazemore, Ann Beddard, Bobbie Claire Bennett, Margaret Bickel, Hilda Blalock, Lucille Blalock, Mary Catherine Blue.

Third Row: Annie Lou Bobbitt, Ruby Lee Bordeaux, Jean Bostian, Martha Bowen, Mary Lou Bowen, Fenner Boyd, Brownie Bradshaw, Virginia Brandon.

Fourth Row: Corinne Braswel, Julia Bray, James Briley, Susan Brinson, Linwood Bryan, John Ballard, Eileen Peggy Burney, Grace Butler.

Junior



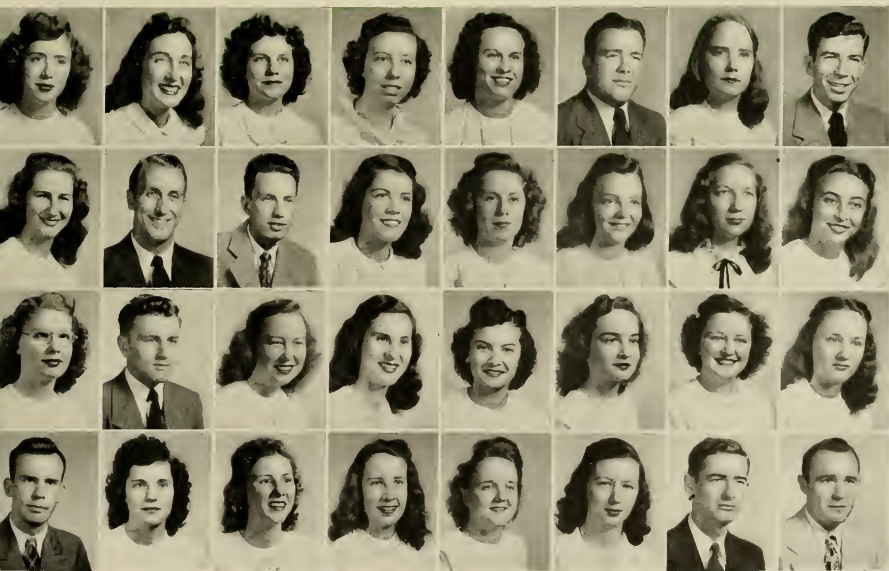
First Row: Mary Byrd, Rosemary Canady, Iola Carrowan, Anne Ford Carson, Margaret Cartledge, Robert Chinnis, Ellen Joyce Clark, Virgil Clark.

Second Row: Emily Cocke, Charles Connor, Carl Thomas Cox, Colleen Carrier, Shirley Currin, Frances Daniels, Lovestine Daughtry, Helen Davenport.

Third Row: Myrtle Davis, Raymond Jack Davis, Rockie Lee Davis, Foy Wray Dewar, Ruth Gray Edmundson, Emma Jean Edwards, Lucille Edwards, Sarase Edwards.

Fourth Row: William J. Edwards, Jr., Lucia B. Elliott, Mary E. Ellis, Sarah Jean Ellis, Louise Enzor, Audrey Feezor, Alton Finch, John D. Finch.

Class



First Row: Virginia Lee Floyd, Gerald Cox Frazelle, Kenneth Frazelle, Rachel Futrell, Helen G. Gaskins, Virginia Gaylord, Mary Alice Gay, Caro! Gore.

Second Row: Lucille Gray, Robert Alton Gray, Billie B. Greene, Sallie Joe Gurganus, Emma Gurley, Janice Haislip, William L. Hales, Milon Hamilton.

Third Row: La Verne Hardeson, Rose Hardison, Genora Jane Harris, Vera Scott Harris, John W. Heath, Gene B. Hedgepeth, Jean Bryan Hilton, Frances Hobgood.

Fourth Row: Edna Earle Holloman, Harritte Hooker, Margaret Howell, John Huff, Polly Ingold, Edith Ipock, Estelle Jernigan, Carolyn Jessup.

Junior



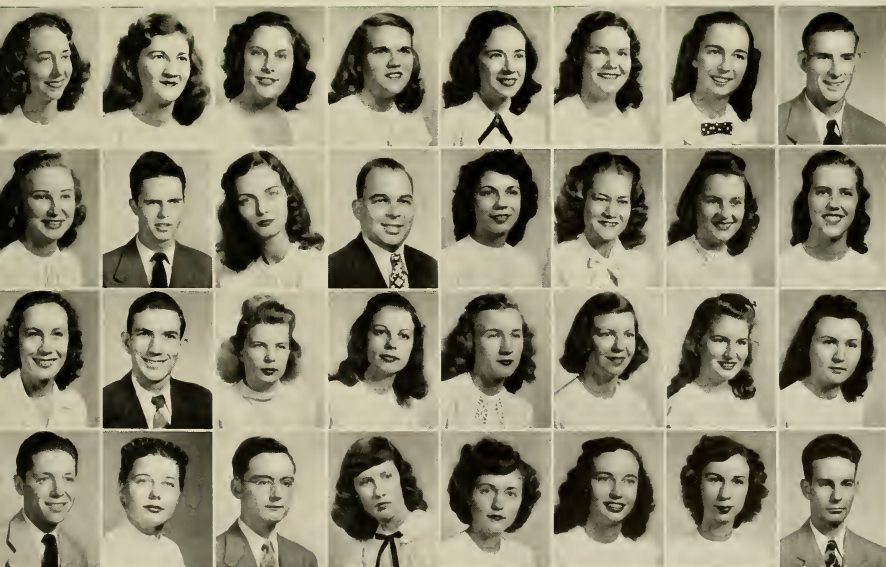
First Row: Martha Johnson, Ruby Mae Jones, Sammie Lou Jones, Thelma Joyner, Rosalie Kearney, Sophie Marie Kelly, Helen J. Kemp, Jesse Lamm.

Second Row: Margie Lamm, L. M. Lancaster, Sue Lanier, George Lassiter, Catherine Lawyer, Lucy Henry Layton, Margie Lewis, Christine Lilley.

Third Row: Myra Little, James F. Lockridge, Dolores Lokotzke, Nina Ruth Long, Lydia Long, Elizabeth Lowe, Audrey Mallard, Elna Mae Mangum.

Fourth Row: A. E. Manning, Lena Manning, Ruffin Manning, Lessie Mae Maready, Marion Martin, Margaret Matthews, Mary Matthews, Phillip Meekins.

Class



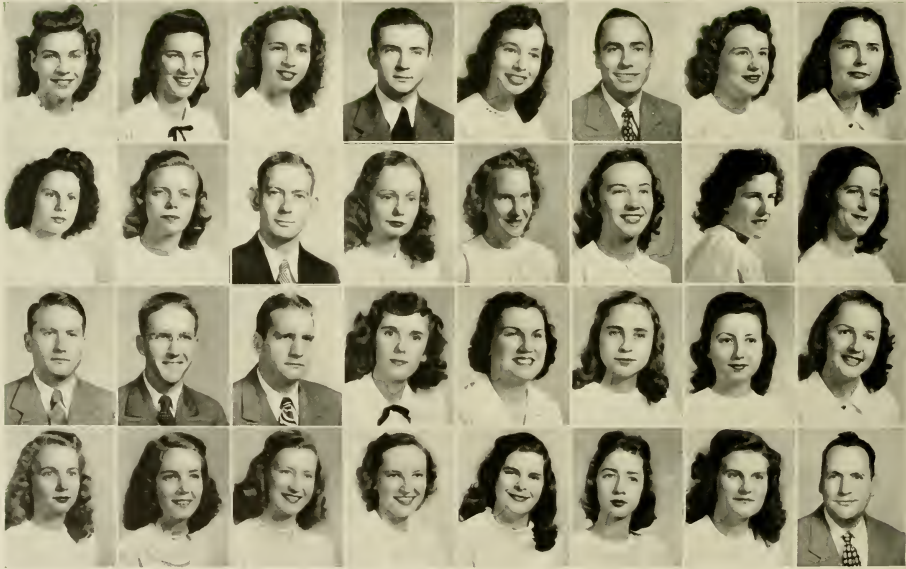
First Row: Lila Rose Melvin, Evelyn C. Mills, Mary Elizabeth Mills, Blanie Moye, Lois McCormick, Jesse McDaniel, Rageline McGranahan, Betsy McKenzie.

Second Row: Mary Elizabeth Nichols, Mildred Agnes Oakes, Eugene O'Neal, Carol Parker, Ophelia Parker, Shirley Parker, Virginia Partin, Mildred Patrick.

Third Row: Frances Peele, Gilbert Peel, Willard Pendleton, Enid Petteway, Josephine Pinnell, Susan W. Pitt, Marjorie Pollard, Carrie Sylvia Parter.

Fourth Row: Dorothy G. Powell, Hilda Lee Priest, Lynn Raper, Edith Rhodes, Helen Rich, Barbara Ridditt, Mary Robertson, R. G. Robertson.

Junior



First Row: John L. Roberson, Carolyn Roulfs, Betty Lou Saiced, Edna Sawyer, Elizabeth Sawyer, Marshall Scruggs, Marjorie Selby, Julia Senter.

Second Row: William Shelton, Mrs. Esther Moore Sheppard, Mae Sheppard, R. L. Shuford, Betty Mae Smith, Dean Smith, Mrs. Doris N. Smith, Lou Smith.

Third Row: Margaret E. Smith, Edna Mae Squires, Nell R. Stallings, Ruth Stevens, Bernice Stone, Blonnie Ellen Stott, Barbara J. Stovall, Gladys Talley.

Fourth Row: Richard Tarravechia, Mary Taylor, Mary Frances Taylor, Ruth Taylor, Dorothy Thomas, Frostie Thompson, Bernice G. Turner, Raymond Uzzell.

Class

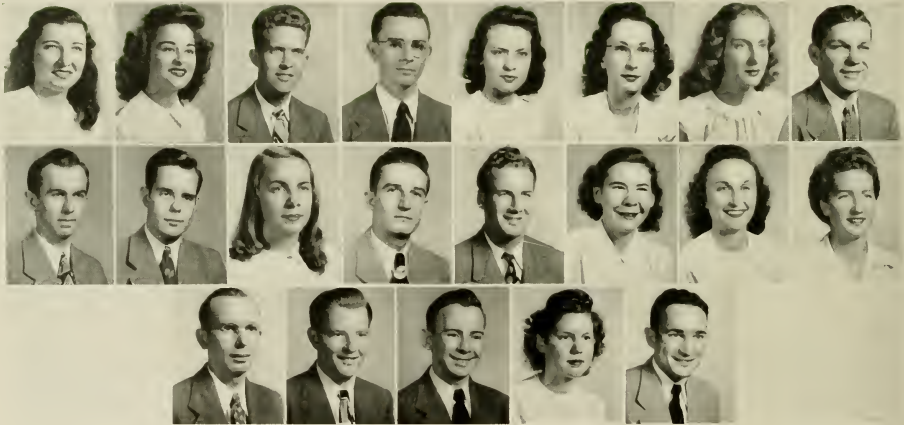


First Row: Mrs. Jessie Rose Waller, Marion Ward, Willie Warner, Calvin Warren, Earnestine Warren, Sue W. Weathers, Mary Weston, Robert D. Wheeler.

Second Row: Howard Whitehurst, Charles R. Williams, Nancy Wilson, Richard Wilson, Frank Winesette, Helen Winslow, Joann Winslow, Ann Winstead.

Third Row: Grover C. Wood, Wade Woodley, Jerome Worsley, Joyce Younce, John M. Young.

Junior Class







SOPHOMORE CLASS

Left to Right: Sullivan Nelson, treasurer; William Sutton, vice-president; Josephine Herring, secretary; Morris Hill, president.

WITH TWO YEARS REMAINING the Sophomores can look back at past mistakes and forward to greater success. We have proved our worth. Now, we are ready to continue growing.

Sophomores

First Row: Nina Abernathy, F. C. Adams, R. C. Adams, Jr., Maxine Anderson, Frances Andrews.

Second Row: Douglas Amerson, Jerry A. Amundson, Lloyd N. Bagley, Marshall Baines, Correll E. Bass.

Third Row: Jerry Bennett, Mildred Best, Myra P. Best, Frank T. Bonner, Ruth Bostian.

Fourth Row: Thomas C. Boykin, Roland C. Braswell, Jessie Brown Braxton, Virginia Brooks, Melba Ruth Browne.

Fifth Row: Rupert T. Browning, Jeanette Brumsey, William Earl Bryant, Paul J. Casey, Paul M. Casey.

Sixth Row: Thomas Edward Casey, W. F. Cherry, Doland R. Clark, Milton V. Clarke, Jane Cole.

Seventh Row: Lewis Collier, Floyd R. Collins, Velva M. Collins, Ernest Connelly, Johnny F. Corey.

Eighth Row: J. F. Cozart, Bettie Croom, James R. Croom, C. V. Cross, Jr., Edythe Grace Daniel.





First Row: William H. Daniel, Ruth M. Daughtie, Graham J. Davis, Robert M. Davis, William B. Davis.



Second Row: J. P. Dean, Maynard A. Dean, William H. Durham, Jr., William T. Early, Jr., Robert W. Eason.



Third Row: Lester Earl Edmundson, Howard Etheridge, Jack S. Everton, William H. Exum, Milton Fields.



Fourth Row: Frances Fischel, Samuel M. Fischel, Frances F. Flora, Rachel Floyd, William Fort.



Fifth Row: Roscoe Frazelle, Jimmy Fryar, Bill R. Fulp, Bruce Gay, Russell M. Gaylord.



Sixth Row: William C. Gay, Robert M. Glover, Carnie C. Gooding, Baxter Gray, Joe Gregory.



Seventh Row: Howard C. Grey, Joseph W. Griffin, James Hall, Walter F. Hannan, Paul M. Hansell.



Eighth Row: Ben Harper, Ben Hayes, Woodard Hayes, Jack Hedgepeth, Josephine Herring.

Sophomores

First Row: Ben S. Hester, George T. High, Aubrey K. Hill, Garland E. Hill, Morris L. Hill.



Second Row: Robert Hokum, Richard D. Holloman, Charles Jackson Howard, Craven Hughes, Dan Hunt.



Third Row: Myra Hunt, Richard J. Hunt, Leon W. Jackson, Walter M. Jackson, Hazel Jacobs.



Fourth Row: Benjamin James, James E. Jarvis, Javan Rogers, Sterling Johnston, Steven N. Johnston.



Fifth Row: Vernon Jones, Virginia Joyce, Carl L. Kinlaw, Warren Koonce, Chester Langley.



Sixth Row: Arah Lee, Charles Lee, Robert B. Lee, Coye Lewis, John W. Liles.



Seventh Row: Cletus M. Link, Mack Liversay, Joe Lynch, Kenneth Manning, Zack B. Manning.



Eighth Row: Carlton T. Marsh, Zack S. Matthews, Alton Mayo, Robert E. Midyette, James E. Montague.





First Row: C. H. Moore, William D. Moore, George E. Morris, Paul R. Morris, Annie M. Morton.



Second Row: Eloise B. Morton, Mary Moye, Cecil Murphy, Julian Murphy, Hubert Musselwhite.



Third Row: Robert T. McClaren, Jr., Robert L. McCoy, Elizabeth McDonald, Samuel G. Nelms, Luther S. Nelson.



Fourth Row: Curtis Nichols, Thad Nobles, Joan Oppelt, Bob Ostrander, Frederick C. Ourt.



Fifth Row: Lorene Owens, Esther Parker, Gilliam Parker, Betsy Parkerson, James C. Payne.



Sixth Row: Melbourne Pearson, A. H. Perry, Lewellyn Phillips, Noah Curtis Phipps, Louise Carolyn Phippen.



Seventh Row: William H. Pittman, Jr., Brian Porter, John Pournaras, Jean Powell, Marvis Price.



Eighth Row: Louise Pridgen, Aubrey W. Pridgen, Christine Badford, Milton Raynor, Jo Reynolds.

Sophomores

First Row: Winifred H. Richardson, Richard S. Ricks, Jr., E. H. Riddick, Sidney Riddick, Arthur Ritch.

Second Row: James Rodney Roberts, Ledyard Ross, Janice Sasser, Henry D. Satterwaite, Claude Sawyer.

Third Row: Elizabeth Schnereger, Henry B. Selby, Haywood C. Sellers, Hugh B. Sherrod, W. H. Skarren.

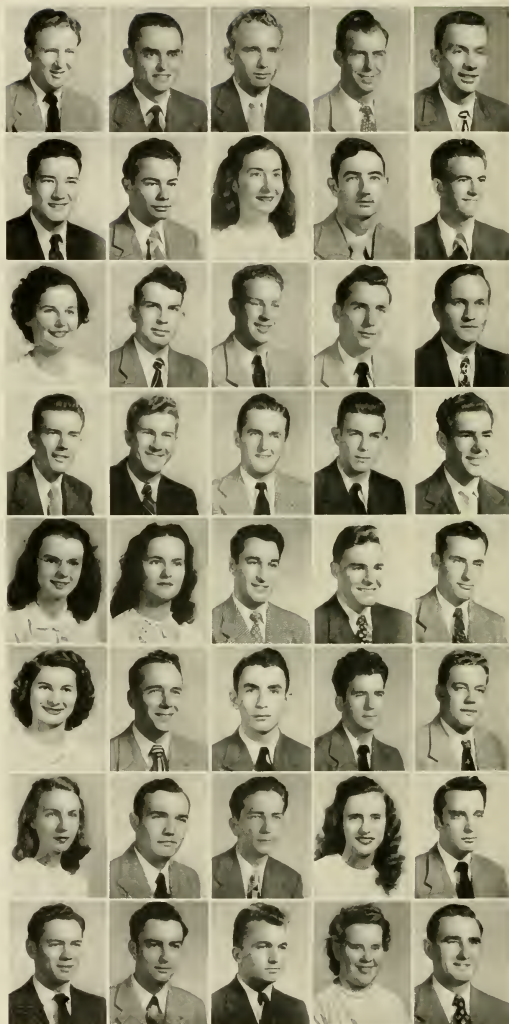
Fourth Row: Marvin Slaughter, G. W. Smith, Lieland Leroy Smith, John N. Smith, Robert S. Stallings.

Fifth Row: Peggy Steed, Lola Stephenson, Alan L. Stoddard, Edwin M. Strand, Hilton Styron.

Sixth Row: Dora Louise Suggs, Hugh I. Sutton, Jr., William Sutton, Herbert Taylor, Paul Taylor.

Seventh Row: Doris Teachey, Stanley Terrell, Jr., J. L. Thompson, Marjorie J. Thompson, William Tuttle.

Eighth Row: Marshall G. Warren, William P. Warren, James L. Waters, Geraldine C. Weathers, James O. Weeks.





First Row: Bernard C. West, Robert N. Weston, Virginia Whitehurst.



Second Row: Dorothy A. Whitfield, Norman Wicker, William D. Windley.



Third Row: Doris Willard, Edith Williams, Marjorie D. Williams.



Fourth Row: Laura Marie Williamson, Lemuel M. Williford, Curtis Wilson.



Fifth Row: John Wilson, Patricia A. Wilson, Johnny Winston.



Sixth Row: Micky Witherington, Charles E. Wood, J. D. Woodlief.



Seventh Row: Newsome Worsley, George E. Wynne, Ella Frances Vida.



Eighth Row: Bill Vincent, Bernard York, John D. Zeh.

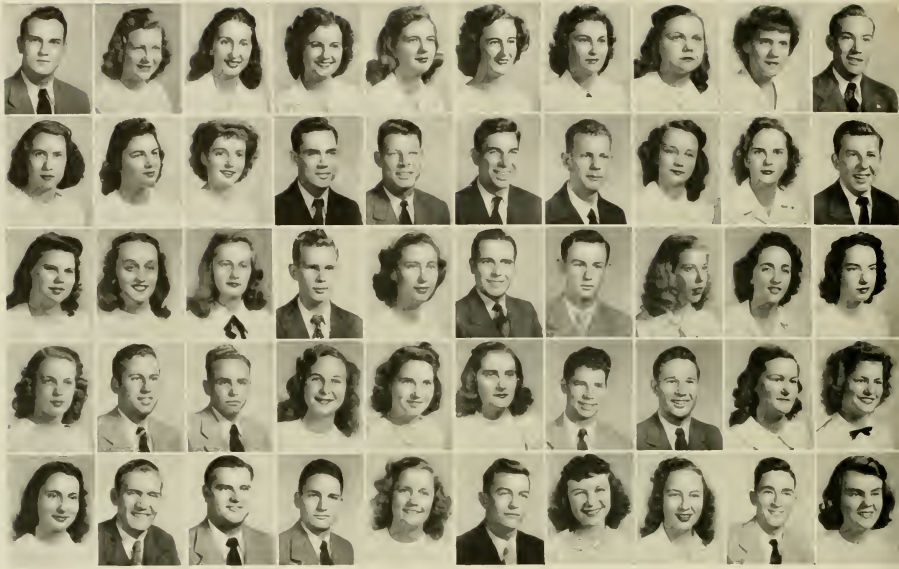


FRESHMAN CLASS

Left to Right: Gilbert Carroll, president; Tempe McIntyre, vice-president; Florence Boerckel, secretary; Billy Sutton, treasurer.

AT THE END OF OUR FIRST YEAR we realize that there is more to college than just attending classes. We are willing to learn—we are practically Sophomores.

Freshmen



First Row: Thomas Adams, Jane Hortense Albritton, Helen Alderman, Georgia Mae Allen, Evelyn Alphin, Margaret Marie Aycock, Mary Evangeline Baker, Sarah Sue Bartlett, Bessie Ray Bass, Johnny Beaman.

Second Row: Betty Catherine Beard, Ann C. Beatty, Margaret J. Bell, Thomas M. Benton, Allen Berry, Danny Berry, William Best, Louise Bizzell, Rachel Blackham, Jimmy Fryar.

Third Row: Velma Bland, Joanne Blue, Florence Boerckel, Frank Boddie, Kathryn Ann Bonner, Thomas F. Booth, Milton Bostic, Jacqueline Boyette, Maureen Brannon, Mary Lou Braxton.

Fourth Row: Grace Breedlove, Carol R. Britt, Paul C. Brittle, Lois Marie Britt, Audrey Louise Brooks, Polly Brown, Raymond E. Brown, Robert E. Brown, Ella Mae Brunton, Ellyn Buffkin.

Fifth Row: Ruby Lee Bullock, Charles Butler, Abner Butterworth, Horace Cahoon, Dorothy Frances Cain, Gilbert Carroll, Edith Marie Cartwright, Virginia Chapin, Frances S. Cheson, Ethel Reid Clements.

First Row: Reba Collier, Carl G. Conner, Peggy Jeannette Cooper, Junius Creech, Cloyce Lee Creel, Ray L. Cuddihy.



Second Row: W. F. Cuddihy, Joyce Loretta Currier, James N. Daniels, Bill Darby, Barbara Davis, Margaret Davis.



Third Row: Patricia Davis, Thomas W. Davis, Donald Denny, Allen Dewar, Helen H. Duncan, Jean Early.



Fourth Row: Mary Jack Eason, William Easterling, Ann Eays, Doris Edwards, J. B. Edwards, Mayhue Edwards.



Fifth Row: Lucille P. Ellis, Darrell Ernest, Mac Eure, Frances Everett, Roddy M. Everett, Betty Lou Everton.



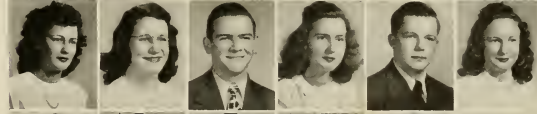
Sixth Row: William Farrell, Wilama Ferrell, Julia V. Ferrill, Minnie Jo Fisher, William H. Flanders, Mary W. Foye.



Seventh Row: Donald Freeman, Jane Fulghum, Nell Fulgham, Jane Gainey, Barbara N. Gardner, Robert H. Gaskins.



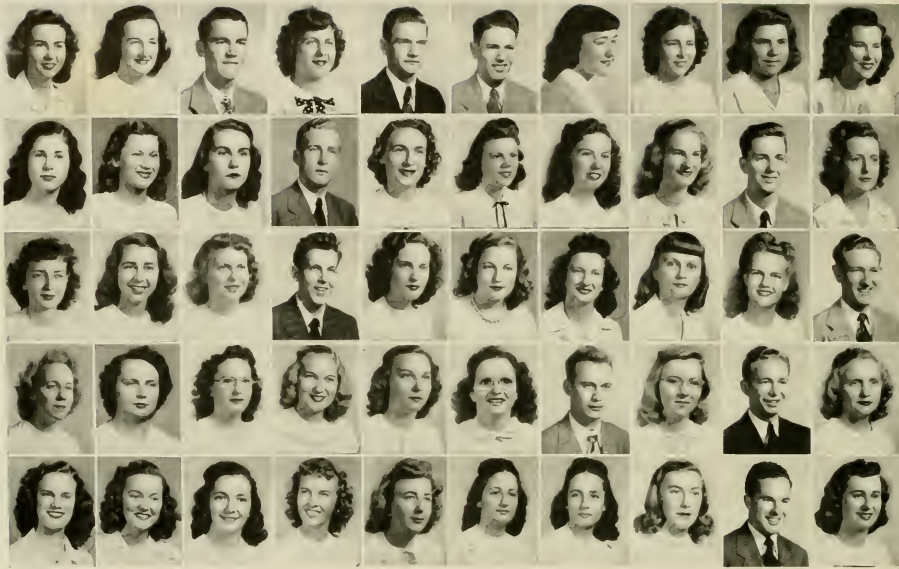
Eighth Row: Evelyn Gay, Elizabeth Glasgow, Philip R. Gorham, Sally Sue Graham, James Martin Gray, Lois Griffin.



Ninth Row: Gilder Grimes, Jack Gurganus, Jean Gurganus, Jean Harrington, Dorothy Harris, Walter H. Harris.



Freshmen



First Row: Kathleen Hartis, Peggy Jean Hart, Don Hatch, Margaret Jean Head, Howard Heath, Roland Heath, Louise Hines, Betsy Hinnant, Thelma Hinson, Marvis Elaine Hobbs.

Second Row: Ramona Hobgood, Lillian Hofer, Jean Holiday, Arthur Hollomand, Leslie B. Homan, Norman F. Hooper, Anne House, Faye Howard, Gene Hoyt, Annette Hughes.

Third Row: Dorothy H. Isles, Ella Jean Jackson, Jannie Jackson, Harry M. Jacobs, Jr., Virginia Mae Jernigan, Daphne Jilcott, Betty Sue Jones, Estelle Jones, Eupha Mae Jones, F. A. Jones, Jr.

Fourth Row: Hazel Gray Jones, Suzie Jones, Elizabeth Jordan, Shirley Kinlaw, Rachel S. Kirby, Lena Evelyn Kite, Leon V. Klutz, Evelyn F. Kornejy, Richard Krumel, Mary Ellen Lancaster.

Fifth Row: Amaryllis Lang, Florine M. Langston, Betty Jean Lewis, Edith M. Lewis, Frances Ann Lewis, Loraine Elizabeth Lewis, Lorese Mary Lewis, Nancy Lewis, Thomas J. Lindley, Mary Neal Lindsley.

First Row: Camille Lockamy, Elizabeth A. Long, Nancy Long, Annie Rose Mallard, Elizabeth Manning, Barbara Martin.

Second Row: Carolyn Mason, Margaret L. Mason, Bob Mays, Ruth Mewborn, Evelyn Michael, Joan Ellen Millar.

Third Row: Cornelia Mills, Peggy Monroe, Faye Moore, Margaret Annette Moore, Phoebe Moore, Violet Moore.

Fourth Row: Horace C. Morris, Lee Ray McDonald, Jr., Helen J. McLawhorn, Tempe Vaughn McIntyre, Charles W. McIver, Joyce Hardy Newell.

Fifth Row: James Nichols, Maynell Nichols, Anne Borden Nicholson, M a u d e Noe, Martha Kate Oakley, Marie Orr.

Sixth Row: Thelma Page, Richard Palmer, Thelma Ruth Parker, Alberta Parkhurst, Audrey Parks, William E. Parham.

Seventh Row: Anne Paschal, Lola O. Peedin, Irene Peele, Martha Pickett, Doris Pleasant, Joe Polilli.

Eighth Row: Bruce H. Pope, Jr., Florence B. Pope, Ola Porter, William R. Potter, Claudia Nanse Potts, Grace Powell.

Ninth Row: Elton Price, Anne Faye Pullen, David A. Qualls, James L. Ratledge, Louise Reece, Christine Register.



Freshmen



First Row: Elda Richmond, Annie Frances Riddick, Bill Robbins, Junius Rose, Lois H. Ross, Grace Rowe, Lucille Rowe, Virginia Rowles, Thelma E. Russ, Johnnie Mae Sawyer.

Second Row: Milton Sawyer, Ramona Sawyer, Charles K. Septer, Cleo Elizabeth Simons, Joseph B. Slaughter, Bertha Smith, Carl Smith, Carrie Mae Smith, Helen Loraine Smith, James D. Smith.

Third Row: John H. Smith, Lois Smith, Marie Smith, Sedalia Smith, Susan C. Smith, Joseph C. Speight, Willie M. Spivey, Dorothy Spruill, Jean Spruill, Alice C. Squires.

Fourth Row: Avis Faye Squires, Ruth Anne Stainback, Giles Ervin Stallings, Mildred Stapleford, Anne Starling, Janice Starling, John B. Stilley, Christine Strickland, Doris Stroud, Patsy Stroud.

Fifth Row: Pency Stewart, William E. Stevens, Beulah Grace Sugg, Wilton J. Sumner, Rachel L. Sutter, Billy Sutton, Patricia Sutton, Laura Frances Swain, Jack E. Swindell, Joyce Swinson.

1948

First Row: Russel Tatum, Alvin Taylor, Jean Taylor, Katherine Taylor, Vivian Taylor, Jack Teel, Jr.

Second Row: Alton Ray Thomas, Doris Mae Thomas, Laura Sue Thomas, Shirley Thornton, Roger Thrift, Mary Sue Todd.

Third Row: Bill Torrans, Frances Tucker, Jack Wallace, Maxine Warren, William Waters, Annette Watson.

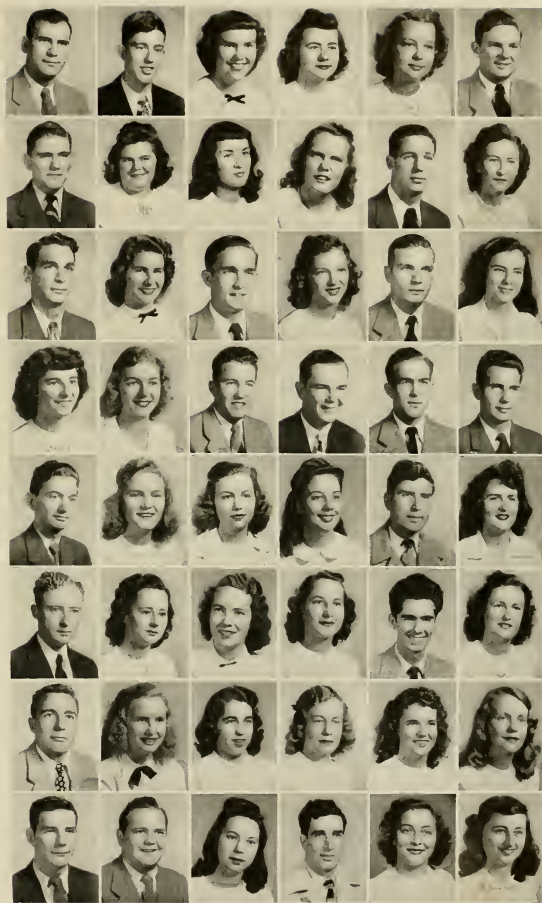
Fourth Row: Helen Watson, Betty Jane Wells, Walter Wells, C. B. West, O. G. Wheeler, Jr., Charles Whiteford.

Fifth Row: Jack K. White, Olene White, Eleanor Whitley, Irma Whitley, Robert L. Whitt, Barbara Jean Williams.

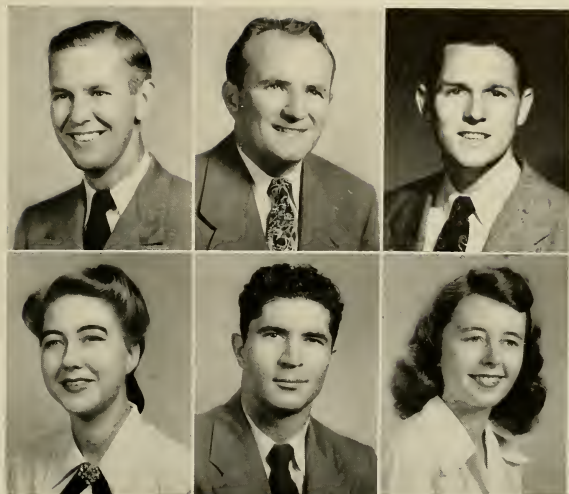
Sixth Row: Elmer E. Williams, Jr., Marjory Williams, Patricia Williams, Patty Williams, Alvin B. Willis, Joyce Willis.

Seventh Row: Buck Wilson, Dorothy Wilson, Frances Wilson, Margaret Wilson, Scottie Winstead, Bertha Winstead.

Eighth Row: Bobby Wrightenberg, Ralph S. Wright, Dorothy L. Vaughan, Francis Vergara, Frances Vincent, Nancy Zachary.







Graduate Students

First Row: Z. W. Frazelle, Everett Hudson, Douglas Jones.

Second Row: Mrs. Ann F. Wells, Joseph Williams, Mrs. Florence H. Warren.

the "After" Hours

... Society Dance ... "The Family Portrait."



... Homecoming ... Sadie Hawkins Day ... Sada

Sharp Remodeling ... Eight Black Pops ...



During Our

*We turn our interests to the
many organizations and clubs
that are a part of our college*





Leisure Time...

*life. With these we may
broaden our scope in any-
thing from debating to music.*





First Row: Fred Martin, Robert Shuford • Second Row: Evelyn Peele, Rebecca Murphy, Rena Lowery, Dorothy Bennett • Third Row: Audrey Feczko, Mattie Harris Mayo, June Bass, Nell Rose Ellis • Fourth Row: Ruby Lee Bordenaux, Alma Arrington, Ed Casey, Gilbert Carroll • Fifth Row: Lola Stephenson, Annie Maude Bivins, Ellen Joyer Clark, Sue Cotton • Sixth Row: Aubrey Rogers, Pally Ingold, Willie Warner, Marjorie Hill • Seventh Row: Marilyn Maxwell, Hilda Riley, A. J. Abdalla, Willard Pendleton • Eighth Row: John Pommaran, Mildred Pruitt, Amos Clark, Amos Sexton, Joe B. Tew • Ninth Row: Peggy McGlohan, Charles D. Connor, Melba R. Browne, Sue McGee, Jack Hedgepeth, Margery Lee Thomas, Peggy Ruess, Joe Acree, John F. Thigpen • Tenth Row: Colleen Carrier, Jack E. Kimbrell, Dorothy G. Powell, Paul U. Craver, Milton Clark.

Student Legislature



FRED MARTIN
President of the Student Legislature

Under a revised constitution the Student Legislature has grown into an organization that justly represents the student body. Its advance is marked with better co-operation and co-ordination of the various clubs and organizations toward promoting school spirit.

Women's Judiciary

The Women's Judiciary made up of eight members has as its main function the promotion and maintenance of high standards of conduct on the campus. These standards are upheld through the combined efforts of this body and the women students.



EVELYN PEELE
Chairman

Left to Right: Melba Browne, Nell Rose Ellis, Dassy Steele, Rebecca Murphy, Evelyn Peele, Frances Hodgeood, Lynn Raper, Christine Bowen, Myrtle Davis.

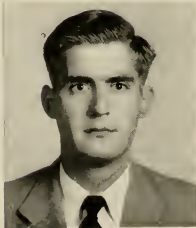


The purpose of the Men's Judiciary is to act as a judicial body in all matters concerning discipline of men students, and to support any movement on the campus for the betterment of the college and the students. The college had its record enrollment of men students this year; thus, the functions of the judiciary were greatly increased.



Left to Right: Clarke Stokes, Al Stoddard, Joe Gregory, Joe Lassiter, Jack Davis, Joe Acree.

Men's Judiciary



JOE LASSITER
Chairman

Handbook Committee

Left to Right: Sue McGee, Joe Lassiter, Annie Mande Bivens.



Entertainment Committee

Left to Right: Marian Ward, Virgil Clark, Dr. Charles Reynolds, Miss Ellen Caldwell, Miss Marguerite Austin, Jack Howard.



Budget Committee

Left to Right: Dorothy Powell, Marian Ward, John Fourstaras, Margaret Carr, Clyde Barrett.

Point System Committee

Left to Right: Milton Clark, Ann Waddard.

Standing Committees

Through the efforts of the committees, the students are provided with entertainments throughout the year, a handbook to help them learn about the college, and other works that keep the campus activities functioning smoothly.



Veterans' Club



First Row, left to right: Jack Hedgepeth, president; Paul Taylor, vice-president; Jack Howard, secretary; Ed Casey, treasurer; Bob Chinno, Will Pittman, Burke H. Parker, Bub Wheeler, Amos Clark, Garland Hill, Dr. Carl Adams • Second Row, left to right: James Johnson, Marshall Barnes, Milton Clark, Morris Hill, Raymond Sellers, Ben Harper, Dan Berry, Wilton Sumner, Stephen Johnson, Paul Casey • Third Row, left to right: John Ponnorasa, Jesse Lamm, Keith Kilpatrick, Tom Moseley, Hugh Sutton, Jack Davis, Jim Michaels, Newton Worsley, Douglas Amerson, Leland Smith • Fourth Row, left to right: Joe Hines, Fred Martin, Joe Tew, Victor Bell, Amos Sexton, Don Denny, Thomas Cox, Marshall Scruggs, Bill Hales • Fifth Row, left to right: Frank Maendley, Al Moore, John Smith, Robert Deans, Mac Eure, Allen Berry, Ike Davis.

The Veterans' Club of East Carolina was formed in the winter quarter of 1946, with the membership composed of the ex-service personnel connected with the college.

The club's purpose is two-fold: a social organization intended to inspire fraternal feeling among ex-servicemen and help in the solving of their problems; a constructive group interested in the advancement of scholastic and athletic achievement on the campus.

With 140 members the club plans activities that encompass the entire school year. Last year the club sponsored a dance and minstrel with the net profit going into the Athletic Scholarship Fund. The same activities are planned for this year.

Y. W. C. A.



First Row: Helen G. Gaskins, Myrtle C. Davis, Doris E. King, Grace Butler, Louise Mewborn, Nancy Fatts, Julia Bray, Alma Arrington, Jean Bastian, Frances Daniels, Lola Stephenson, Anne Hunsar, Grace Sugg, Hazel Jones • *Second Row:* Virginia Rowles, Ethel Clement, Ruby Lee Bordeaux, Sophia Maris Kelly, Lola Carrowan, Faye Howard, Peggy Monroe, Susan Smith, Ellen Joyce Clark, Ruby Mae Jones, Florence Boerckel, Evelyn Peele, Rebecca Murphy • *Third Row:* Rachel Floyd, Marion Burton, Lois Ross, Elma Mangum, Dorothy Frances Cain, Marjorie Pollard, Eupha Mae Jones, Marie Orr, Virginia Chapin, Genora Harris, Daphne Jilcott • *Fourth Row:* Bessie Ray Bass, Mary Lou Austin, Mary Lou Beaxton, Lola Griffin, Margaret Mason, Marie Aycock, Rachel Kirby, Shirley Parker, Elizabeth Wamble, Tempe McIntyre, Bernice Stone, Grace Daniel, Marjorie Thompson, Frances Wilson, Maxine Warren, Ann Fay-Pullen, Mary Ann Bass • *Fifth Row:* Doris Stroud, Kathryn Ann Bonner, Florence Pope, Evelyn Kite, Annie Bose Mallard, Jane Gainey, Sallie Bitt Wilson, Patricia Sutton, Elizabeth Jordan, Edith Rhodes • *Sixth Row:* Irene Peele, Laura Frances Swain, Dorothy Isles, Violet Moore, Christine Radford, Mildred Oakes, Louise Sugg, Mary Ann Happer, "Jo" Herring, Mae Sheppard, Virginia Partin.



ALMA ARRINGTON
President

One of the first organizations to begin on the campus, the Y. W. C. A., is functioning in all its original efficiency. The Friday night vespers, "Night Watch", the traditional Christmas program, the "Big Sister" program, the W. S. S. F. drive and Religious Emphasis week are all a part of the Y. W. C. A. program for the year.

The Young Men's Christian Association was first organized at East Carolina in the spring of 1939, and it continued until the war. It was reorganized in November 1946.

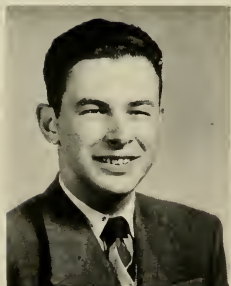
The Y. M. C. A. and the Y. W. C. A. jointly sponsor: vespers every Friday night, the drive for the World Student Service Fund, the White Gift Service each Christmas, Religious Emphasis Week, and Graduation Vespers in June. The Y. M. C. A. sends delegates to the various regional and sectional conferences with one of its members on the state planning board. This summer the organization plans to send its president to Presidents' School in New York.

The Y. M. C. A. is open to all men at East Carolina, either students or faculty, who declare themselves in sympathy with the purposes of the organization.

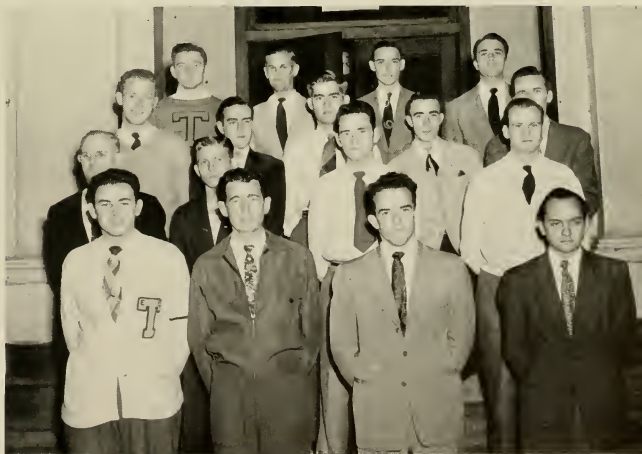
The pledge of the Y. M. C. A. is: "Having declared my intention of making the purpose of the Young Men's Christian Association my own personal program of allegiance and service. I hereby pledge myself to live by the principle of faith and service through Christ for which it stands."

Y
M
C
A

First Row, left to right: Paul Craver, president; Maynard Dean, vice-president; Earl Sawyer, secretary; Joe Brown, treasurer. • Second Row, left to right: Dr. Bercher Flanagan, James Belle, Tom Collins, Hubert Bergren • Third Row, left to right: Raywood Sellers, Kenneth Frazelle, Joe Lassier, Bill Durban, Jack Kimbrell • Fourth Row, left to right: Blaine Moye, Z. W. Frazelle, Gene Hedgepeth, John Pournaras.

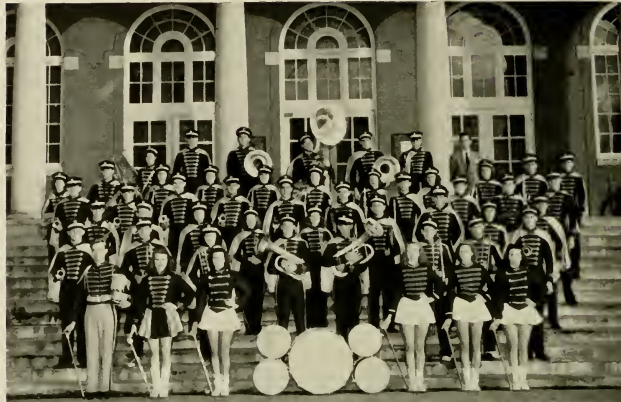


PAUL CRAVER
President



THE COLLEGE BAND

During the first part of the year the band started a campaign to get new uniforms. Their dreams have come true. Next year the band will be dressed as well as any other college band.



The Women's Chorus has continued to provide musical entertainment for the college. Their voices can be heard lifted in song at chapel services, concerts, and many other programs throughout the year.



THE WOMEN'S CHORUS

THE COLLEGIANS



During the short time that they have been organized the band has grown to be acclaimed one of the better dance bands in Eastern North Carolina. You name it—they can play it!



The College Choir to many students is one of their favorite classes. For a number of years and more to come the choir will continue to provide enjoyment for the students and others.

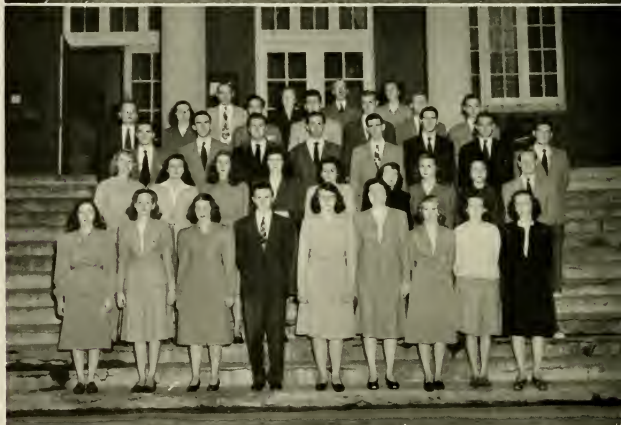
THE COLLEGE CHOIR

THE COLLEGE SINGERS

The College Singers were organized last year. In a short time they have built a reputation for providing programs of pleasure and beauty.



The purpose of the Music Education Club is to develop in its members a deeper knowledge and appreciation of music; and to stimulate an interest in music activities on the campus. The programs combine social activities with student participation, guest speakers, and discussions.



MUSIC EDUCATION CLUB

BRASS QUARTET



The Brass Quartet is made up of students who are interested in bettering their technique and learning more about the instruments in the brass family.

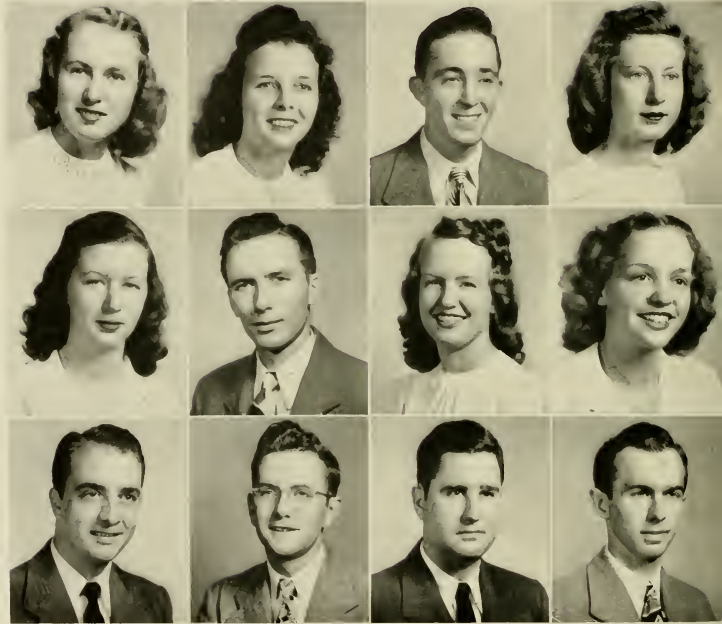


This group with the Brass Quartet was organized this year. With the growth of the music department the number of ensembles has increased.

WOODWIND QUARTET

Campus Leaders

E. C. T. C.

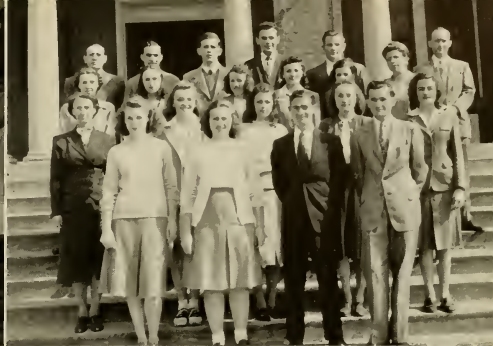


These are the leaders of the departmental clubs through whose efforts our organizations function efficiently.

First Row: Annie Maude Bivins, Home Economics Club; Ruby Lee Bordeaux, Sigma Pi Alpha; Thomas Ed Casey, Commerce Club; Sue Cotton, Alpha Alpha Sigma; Audrey Feczor, Science Club; Jack Kimbrell, International Relations Club; Louise McWhorn, English Club; Joan Oppelt, Music Education Club; John Pourzaras, Jarvis Forensic Club; Aubrey Rogers, Chi Pi Players; John Thigpen, Phi Sigma Pi; Howard Whitehurst, Future Teachers of America.



Tau Chapter of Phi Sigma Pi



Beta Kappa Chapter of Pi Omega Pi

Tau Chapter of Phi Sigma Pi

This chapter of the national education fraternity sponsors speakers with relationship to the education field. Representatives of the F.B.I., Dean's office, Treasurer's office have appeared before the group. A square dance and founders day banquet are annual events.

First Row: left to right: John Thigpen, president; Kenneth Frazelle, secretary; Gene Hedgepeth, treasurer; Frank Coince, Amos Clarke, Earl Sawyer ● *Second Row:* left to right: Dr. Beecher Flanagan, Aubrey Rogers, Gilbert Pele, Gordon Davis, Alton Finch, Calvin Warren ● *Third Row:* left to right: R. L. Shuford, Fred Martin, Helvin Beck, Joe Lassiter, Joe Aeree, Douglas Jones ● *Fourth Row,* left to right: Willie Warner, Garlon Bailey, Z. W. Frazelle, Raymond Uelle, Joe Brown, Joe Tew.

Beta Kappa Chapter of Pi Omega Pi

To promote scholarship and interest in business education is the chief purpose. Pi Omega Pi has as its minimum entrance requirement an average of a two in twenty-one quarter hours of business education and a "three" in other courses.

First Row, left to right: Ruth Johnson, Frostie Thomson, Alton Finch, Isaac Reynolds ● *Second Row,* left to right: Miss Velma Lowe, Frances Daniels, Nina Byth Long, Jo Ann Winslow, Margaret Carr ● *Third Row,* left to right: Miss Lena Ellis, Mildred Pruitt, Mattie Harris, Maxie Ruth, Richard, Ann Boddard, Miss Audrey Dempsey ● *Fourth Row,* left to right: Dr. E. R. Browning, Joe Tew, Amos Clarke, Paul Craver, Wade Woodley, Norman Cameron.

Alpha Alpha Sigma

This fraternity's purpose is to promote service and leadership in Social Science education. Sophomore, junior, and senior social science majors with a "three" average are eligible for membership.

First Row, left to right: Gladys Talley, Helen Winslow, Nell Rose Ellis, Sue Cotten ● *Second Row,* left to right: Dr. Beecher Flanagan, Paul Craver, Myrtle Paul.

Phi Sigma Chapter of Sigma Pi Alpha

Membership in the Sigma Pi Alpha is limited to those students who have an unusual interest in languages and who have an average of a "two" in foreign languages.

First Row, seated: Buby Lee Bordeaux, president; Frances Daniels, vice-president; Rosemary Canady, secretary-treasurer ● *Second Row,* left to right: Margaret Bickel, Peggy Steed, Mary A. Whichard, Patricia Lyon, Ella Cashwell, Christine Lilley, Mary Mills ● *Third Row,* left to right: Milton Fields, Dan Hunt, Alan Stoddard.

Alpha Alpha Sigma



Phi Sigma Chapter of Sigma Pi Alpha



Art Club

The Art Club conducted four work shops for the making of posters on the campus. A print exhibition from the Robert-Lee Galleries was one of our main events besides monthly gallery trips that supplemented our meetings.

Left to Right: Mercedes Ange, Annie Doris Heath, A. E. Manning, Mrs. Bernice Wagge, Dorothy Thom, Jimmy Jarvis, Miss Jean Lane.



Home Economics Club

Good things have come from the Home Economics Club this year—100% membership, the state president, and many interesting programs.

First Row, left to right: Annie Maude Rivers, president; Myrtle Davis, vice-president; Bernice Stone, secretary; Edna Squires, treasurer; Beaufort Williams, Sara Lou Edwards, Doris Dawson, Genora Harris. ● *Second Row, left to right:* Blonnie Stout, Helen Watson, Betsy Hinant, Marie Orr, Tempe McIntyre, Lucille Ellis, Reba Collier, Lavina Harper, Mrs. A. E. Blixson, Dorothy Cain. ● *Third Row, left to right:* Jo Pennell, Carrie M. Smith, Rachel Kirby, Cornelia Hill, Dean Smith, Avis Squires, Thelma Russ, Miss Mahel Lucy. ● *Fourth Row, left to right:* Carolyn Roulf, Louise Bizzell, Evelyn Gay, Louise Enzor, Frances Wilson, Grace Bevel Love, Julia Carawan, Doris Edwards, Lola Peeden, Ramona Hohgood, Elizabeth Manning. ● *Fifth Row, left to right:* Della Evans, Amaryllis Long, Wary Humphrey, Emily Robertson, Marie Smith, Helen Alderman, Ann Battle, Nell Battle, Juanita Herring, Miss Eunice McGee, Ann Atkinson, Betty Ellis. ● *Sixth Row, left to right:* Audrey Fezzer, Helen Gaskins, Sammie Jones, Edith Starling, Esther Parker, Evelyn Mills, Enid Pettway, Lessie Mae Mearby, Dorothy Wheeler, Margaret Dickson, Ernestine Warren, Nell Perry, Mrs. Peggy A. Tatarski. ● *Seventh Row, left to right:* Dorothy Ide, Laura Swain, Louise Cayless, Katherine Barnes, Doris Smith, Daphne Pake, Geraldine Johnson, Nita Ballenger, Elizabeth Wumble, Dorothy Vaughan, Lois McCormick, Jean Bostain, Frances Bass. ● *Eighth Row, left to right:* Mrs. Jesse Bose Waller, Marjorie Thompson, Lewellyn Phillips, Carol Gare, Harriett Hooker, Rachel Tutrell, Sue Cotten, Elizabeth Jordan, Margaret Moore, Nina Abernathy, Ruth Bass.



Science Club

During the fall the club gave a successful Sadie Hawkins Day dance. With this plus their efforts to bring modern scientific trends into their programs, they have made their club outstanding.

First Row, left to right: Audrey Fezzer, president; Josie Joyner, vice-president; Lola Stephenson, secretary-treasurer; Tom Callison, A. J. Madala, Anne Atkinson, Frances Bass, Lola Beacham, Dan Berry. ● *Second Row, left to right:* Annie Maude Rivers, Jean Bostain, Thelma Russ, James Briley, Francis Chesson, Reba Collier, Robert Davis, Thomas Davis, Faye Draper, Doris Edwards, Lucila Elliott. ● *Third Row, left to right:* Ben Harper, Juanita Herring, Morris Hill, Dan Hunt, Andrew Jenkins, Lynnwood Johnson, Rosalie Kearney, A. E. Livesey, Fred Martin, Luther Nelson, Nell Perry, Betty Doris Sanders. ● *Fourth Row, left to right:* Hayward Sellers, William Sutton, Fountain Taylor, Bernice Turner, Dixie Hunter Warren, Earl Sawyer, Mr. J. O. Derrick, Miss Christine Wilton, Lois McCormick, Lewellyn Phillips, Mrs. Christine Gray Smith, Helen Gaskins. ● *Fifth Row, left to right:* Max Garrell, Joe Toth, Frank Toothman.





Alumni Daughters and Sons Club

This club is growing with leaps and bounds! They help to keep their parents and other alumni up to the minute with news from their alma mater by helping prepare and mail the alumni bulletin and offering their services and banquets and other alumni events.

Seated, left to right: Marvis Elaine Hobbs, Mary Speight, Bertha Winstead, Marjorie Perry, Lois Ross, Mary Lee Parker, Elizabeth Carter, Jane Early, Sue Pitt ● *Second Row, left to right:* Patricia Sutton, Rosa Adell, Louise Stanley, Margaret Wilson, Elda Richmond, Evelyn Kornegay, Peggy Cooper, Dotmeagan Lane, Ellen Clark, Margaret Mason, Frances Hobgood, Anne Barden Nicholson, Ethel Clement, Peggy Sted, Alma Whitley, Enid Petteway.



Jarvis Forensic Club

A notable achievement of the Jarvis Forensic Club was the winning of "National Speaker" and "Big Ten Debate Teams" rating by Edward Bright and Gibbon McNeely at the Grand National Forensic Tournament.

First Row, left to right: John Fournaras, president; Bob Chimnis, vice-president; Mildred Pruitt, secretary-treasurer; Edward Bright, Ella Cashwell, Boh Ross, Milton Fields, Garland Hill, Fred Martin ● *Second Row, left to right:* Cecil Murphy, George Lassiter, George Morris, Morris Paul, Bill Durham, Annette Pridden, Charles Williams, Hilton Strom, Warren Jarvis, Lola Stephenson ● *Third Row, left to right:* Sue Cotton, Tom Musoley, Rosalie Kearney, Helen Gaskins, Gerry Amundson, Jack Kimbrell, Frank Toothman, Richard Holleman, Morris Hill, Dr. M. N. Pecos.



Teachers Playhouse

The players think their organization is one of the most active on the campus. Last year they gave three productions which were acclaimed, they modestly admit, as smash hits by both students and town folk. This year they hope to surmount last year's success with three more major productions.

First Row, left to right: Aubrey Rogers, vice-president; Lola Stephenson, secretary; Hubert Bergeron, Gordon Davis, Virgil Clark ● *Second Row, left to right:* Jack Howard, John Fournaras, A. E. Manning, Lena Manning ● *Third Row, left to right:* Ruth Carroll, Nell Rose Ellis, Elizabeth Tripp, Mary Lou Daniels, Annie Doris Heath, Iola Carowan ● *Fourth Row, left to right:* Charles Williams, George Morris, Ruth Bastian, Helen Winslow, Geraldine Amundson, Alton Finch, Tom Musoley, Milton Fields ● *Fifth Row, left to right:* Bill Durham, Marvin Slaughter, Milton Raynor.

International Relations Club

This club is for everybody, any and all students and faculty members. Under the sponsorship of the social studies department, they have internationally known speakers and group discussions for programs.

First Row, left to right: Fenner Boyd, Isaac Reynolds, Nick Fokakis, Jack Kimbrell, Dr. Leo W. Jenkins, Charles Butler, Suzanne Jerrigan, Mary Robertson • *Second Row, left to right:* Milton Clarke, Cecil Murphy, Haywood Sellers, Barbara Redditt, Gay Brown, Annette Hughes, Mary Wallace Fay, W. B. West, Jean Holliday, Anne Starling • *Third Row, left to right:* Milton Fields, James Briley, John Pournaras, Della Evans, Emily Roberson, Laura Rose, Lary Nulton, W. E. Marshall, Betty Jane Wells, Betty Catherine Beard • *Fourth Row, left to right:* Paul Marcus, L. E. Brewster, H. A. Coleman, E. C. Hollar, A. D. Frank, Peggy Steed, Pat Wallace, Margaret Bickel, Patricia Sutton, Frances Everett • *Fifth Row, left to right:* H. Winfield Carter, Elizabeth Carter, Scottie Winstead, Violet Moore, Rachel Kirby, Sue Weathers, Mary Lou Austin, Annie C. Warren, Lee Roy McDonald, Horace C. Morris • *Sixth Row, left to right:* A. E. Livesay, Carl Kinlaw, Mildred Oakes, Ruth Taylor, Anne Carson, P. A. Tall, James E. Fleming, James Collins, N. C. Phipps • *Seventh Row, left to right:* George Lusnier, George Morris, Ernest Connolly, Howard Etheridge, Paul Craver, Grover Wood, Steven Nables, Earl Edmundson, Samuel Fischek, Lewis Collier • *Eighth Row, left to right:* Marshal Strangis, Tom Cox, Leta Stephenson, Sarah Lou Edwards, Gay Arnold, Bob Eason, Joseph Hines, Kenneth Frazelle, Gene Hedgepeth • *Ninth Row, left to right:* Betty Lewis, "Mugs" Carver.



Association for Childhood Education

This club is a branch of the international, national, and state organization. It is its main purpose to work for the education and well-being of the child.

First Row, left to right: Ellen Clark, president; Sue McGee, vice-president; Lottie Murphy, secretary-treasurer; Christine Bowen, Marion Burton, Mary Lou Daniel, Emma Gurley, Lucille Blalock • *Second Row, left to right:* Helen Rich, Marietta Whitefield, Edith Smith, Hilda Riley, Evelyn Peeler, Jocelyn Moore • *Third Row, left to right:* Betty Jean Saunders, Elizabeth Sutton, Edna Sawyer, Barbara Sovell, Dorothy Thomas, Lillian Castor.



Future Teachers of America

The Robert H. Wright Chapter of F. T. A. is proud that it is honored among the seven chapters which have this year affixed the tenth gold seal to their charters. Pioneers have been these chapters in leading prospective teachers into active membership in the national and state association of "real" teachers; and the club happily celebrates its share in promoting the junior branch of the association.

First Row, left to right: Helen Rich, Thelma Joyner, Ellen Clark, Howard Whitehurst, Corinne Braswell • *Second Row, left to right:* Mary Ann Bass, Elizabeth Sawyer, Miss Emma Hooper, Marie Sheppard, Edith Rhodes • *Third Row, left to right:* Emma Gurley, Dixie Lee Gurley, Mary Speight.



Mathematics Club

Solve problems! This, as well as many other pleasant activities take place in this club. This year, the club plans to give a scholastic medal. Hats off to their new advisor, Dr. John O. Reynolds, whose keen interest will be a stepping stone to success.

First Row, left to right: Rena Lowrey, president; Elizabeth Carter, vice-president; Ann Beddard, Carl Conner, Z. W. Frazelle, Mary Alice Gay. • *Second Row, left to right:* Mattie Harris Mayo, Frostie Thomson, Julia Bray, M. G. Warren, Rebecca Murphy. • *Third Row, left to right:* Dr. John O. Reynolds, Miss Ellen R. Caldwell, John Robinson, Kenneth Frazelle.

Commerce Club

While browsing around in the basement of the Classroom Building, you can see them almost anywhere working on their dance, carnival or Business Education Conference.

First Row, left to right: Ed Casey, president; Margaret Cary, vice-president; Ann Beddard, secretary; Gene Hedgcock, treasurer; Douglas Anderson, Marie Aycock, Ruth Boston, Mary Lou Branton, Carl Britt, Melba Browne, Grace Butler, Paul Casey, Delorene Phibbs. • *Second Row, left to right:* Milton Clarke, Paul Craver, Colleen Carter, Shirley Curran, Frances Daniels, Lovestine Daugherty, Maynard Dean, Phiggins Dean, William Durham, Jane Early, J. B. Edwards, Howard Elderidge. • *Third Row, left to right:* Betty Lou Everton, William Fort, Kenneth Frazelle, Z. W. Frazelle, Howard Gray, Milton Hamilton, Jack Hedgcock, George High, C. J. Howard, John Howard, Richard Holloman, Edith Ipoek, Steven Johnston, Euphie Mae Jones, Sophia Kelly. • *Fourth Row, left to right:* Carl Kinlaw, Warren Koonce, Dotman Lane, Florine Langston, George Lassiter, Loraine Lewis, Lorise Lewis, John Liles, Nina Ruth Long, Rena Lowrey, Elma Mangum, Mary Matthews, Paul Morris, Frederick Overt, Margerite Perry, John Pournaras, Aubrey Pridgen, Anne Faye Pullen, Christine Radford. • *Fifth Row, left to right:* Leland Smith, Nell Stallings, Louise Suge, Patricia Sutton, Frostie Thompson, Mary Weston, Edith Williams, Jeann Winslow, Charles Woods, Wade Woodley, Newsome Worsley, Edythe Daniel, Carl Cox, Jean Bennett, Isaac Reynolds, Julia Bray, Mary Robinson, George Morris, Elizabeth Lowe, Esther Sheppard, Julian Murphy. • *Sixth Row, left to right:* William Warren, Cleus Link, Joe Lynch, C. T. Mason, Estelle Jones, Hazel Joricks, Polly Brown, Myrtle Paul, Ruth Johnson, Katherine Taylor, Lola Griffin, Beatrice Player, Lynn Ripper, Bob Russ, Mildred Pruitt, Marshall Scruggs, Annie Frances Riddick, Marvis Elaine Hobbs, Mary Alice Gay, Helen Kemp, Doris Brown, Joe Gregory. • *Seventh Row, left to right:* Loucile Nee, Jessie Pace, Edna Eldridge, Annie Warren, Robert McClaran, Nick Folkakis, Rachel Pleasant, Bennie Wickard, John McDonald, Norman Cameron, Lena Ellis, William Force, Audrey Dempsey, Velma Lowe, Elmer Browning.

English Club

Something new has been added—a new advisor—Miss Grigsby. Programs of various types pertaining to the field of English are held in the English Laboratory.

First Row, left to right: Louise Newburn, president; Josephine Herring, vice-president; Christine Lilley, secretary; Elizabeth Lowe, treasurer; Laura Williamson, Sylvia Porter, Marilynn Maxwell. • *Second Row, left to right:* Elma Mangum, Mary Lee Parker, Jo Ann Winslow, Geraldine Amundson, Ruby Lee Bordeaux, Bernese Pender, Ruth Taylor, Miss Louise Greer. • *Third Row, left to right:* Helen Winslow, Mildred Oakes, Martha Johnson, Jack Kinrell, Gordon Davis, Elizabeth Tripp, A. E. Manning, Bill Durham, Hubert Bergeron.

Publications

The Publications Board includes the editors-in-chief, business managers, and faculty advisors of the publications, the Dean of the College, the Director of Student Affairs, and the president of the college. These are the people who try to give the students the kinds of publications they want.



Hilda Riley



Annette Pridden



Marilyn Maxwell



Mercedes Ange



Ella Cashwell



Amos Clark



Betsy Parkerson



Dr. Leo W. Jenkins



Miss Mary Greene



Dr. Beecher Flanagan



The Teco Echo, 1948

Published bi-weekly, the *Teco Echo*, college newspaper, is a student publication. All students are eligible for membership on the staff of the paper. Associate editors of the editorial staff are appointed by the co-editors-in-chief. Each year members of the staff are selected to represent the college at a meeting of the Columbia Scholastic Press association in New York City. The college news organ is a member of various national collegiate press associations and has received excellent rating from these a number of times.



Top Circle: Ella Cashwell and Amos Clark, co-editors-in-chief.
Bottom Circle: Betsy Parkerson, business manager.

Seated, left to right: Charles Williams, Ella Cashwell, Amos Clark, Bernard West, Frances Andrews, Carl Conner ● *Standing, left to right:* Ellen Clark, Jimmy Jarvis, Jane Butler, Tom Larkins, Eild Petteway, Jack Hedgepeth, Estelle Jones, Jimmy Farelle, Patricia Davis.



The 1948 TECOAN

This is probably one of the first yearbook staffs to turn out two annuals in one year! Even with the millions of questions every day of "Where are the annuals?" and "Will we get the '48 *Tecoan* this year?" we have enjoyed it. We only hope you enjoy the annual.



Seated, left to right: Sophie Fischel, Marilyn Maxwell, Dr. Leo W. Jenkins, Mercedes Ange, Sue Lanier • *Standing, left to right:* Christine Radford, Yveta Collins, Mildred Best, Beaufort Williams, Camilla Selby.

Top Circle: Marilyn Maxwell, Editor-in-Chief.
Bottom Circle: Mercedes Ange, Business Manager.



While trying to compile this yearbook, the business staff has tortured the merchants, worried the budget office, and counted and recounted; but the editorial staff, well, they have lost sleep, pictures, typed material, fingernails, and friends.



Seated: Mildred Best and Sue Lanier • Standing: Sophie Fischel, Christine Radford, Camilla Selby, Beaufort Williams.

Left to Right: Marilyn Maxwell, Mercedes Ange, Dr. Leo W. Jenkins.

We hope that our work has not been in vain, and that in the years to come this yearbook will take you back to some of the happiest days of your life.



Left to Right: Christine Radford, Mildred Best, Beaufort Williams, Camilla Selby, Sophie Fischel, and Sue Lanier.

Pieces o' Eight 1948

Your college magazine, Pieces O' Eight, is of the students, by the students, and for the students. It is of the students, in the respect that it represents every phase of student ability in the most democratic way possible: by the students reveals that the magazine is compiled, produced, fought for and finally achieved by the efforts of hard work and creative ability; and last it is primarily for the students' enjoyment trying to give those who wish to do so a chance to expand.



Seated, left to right: Margaret Wilson, Richard Powers, Annette Pridgen, Hilda Riley, Milton Fields, Camilla Selby • Standing, left to right: Jimmy Fryar, Carol Parker, Haywood Sellers, Daisy Steele, Christine Bowen.

*Top Circle: Hilda Riley, Editor-in-Chief.
Bottom Circle: Annette Pridgen, Business Manager.*



The "After Assembly" Rush



Walking



Riding



Running



MRS. M. W. MAXWELL

Sponsor Tecoan Editor in Chief



MRS. W. C. ANGE

Sponsor Tecoan Business Manager

"The Fighting Pirates"

Society Dance ... "The Family Portrait."



Homecoming ... Sadie Hawkins Day ... Soda

Sweep Breakfast ... Eight Black Pops.



"Fifteen Rahs

*Just watching our teams at work
makes us prouder still of our
school. Intramural as well as*





or the Pirates"

*inter-collegiate sports have
grown and will continue to
grow.*



Varsity Club

The Varsity Club is made up of athletes who have earned letters for participation in varsity sports. Each member who earns one is given a sweater by the club. Each year the club sponsors its annual dance in honor of the Varsity Sweetheart who is chosen by the members from the girls on the campus.

First Row, left to right: Willard Pendleton, treasurer; R. B. Lee, Keith Kilpatrick, president; Jack Davis, vice-president • *Second Row, left to right:* Bob Miller, Ellie Fearing, Colin Peble, John Wyatt, John Thiipen, Paul Craver, Amos Sexton, Jack Everton, Jack Hedgepeth, James Briley • *Third Row, left to right:* C. O. McMullan, Zack Manning, Garlan Bailey, Blainie Mays, Dennis Basnight, Russell Gaylord, Everett Hudson, Jesse Laman • *Fourth Row, left to right:* Coach James Johnson, Frank Winsette, George Wynn, Clayton Morrisette, Doug James, C. R. Mays, Ahh Williams, Henry Brennan, M. Wetherington.



Men's Athletic Association

The Men's Athletic Association is open for all men who are interested in athletics and the betterment of physical education on the campus. The association strives for better health standards and better sportsmanship through intramural games during the year.

First Row, left to right: C. O. McMullan, John Wyatt, Ellie Fearing, Amos Sexton, Jack Hedgepeth, Willard Pendleton • *Second Row, left to right:* Joe Pollitt, Bay Wooten, Jack Davis, B. L. Shuford, John Thiipen, Edward Height • *Third Row, left to right:* Ohio Powell, Paul Craver, R. B. Lee, Garlan Little, Richard Bicks, Joe Lassiter • *Fourth Row, left to right:* James Johnson, F. F. Holscher, Edwin Averette, James Briley.



Women's Athletic Association Cabinet

"The purpose of the Women's Athletic Association is to encourage the spirit of play for its own sake, to work for the promotion of physical activities among the student body under the leadership and environmental conditions that foster health, physical efficiency, and to develop good citizenship." Every woman student on the campus is a member. The club has sixty active members with Miss Nell Stallings and Miss Thursa Steed as advisors.

Left to Right: Mary Robinson, Mrs. Frances S. Bailey, Fatsy Pridgen, Sarah Bazemore, Helen Duncan, Annette Pridgen, Emma L. Gurley, Evelyn Mills.



Athletics of East Carolina

What would college be without athletics? What would athletics be without cheerleaders? Throughout the various sports seasons the cheerleaders have kept up the school's spirit and encouraged the teams to win.

Left to Right: Clarke Stokes, Dean Smith, Henry Selby, Patsy Pridden, Paul Craver, Ann Beillard, Jimmy Fryae, Peggy Hunneycutt, Paul Upchurch.





FOOTBALL of

The Pirates' record for this year shows marked progress over the team's records in the past. Let's keep it up!

First Row: Frank Winsett, End; R. B. Lee, Tackle • Second Row: Henry Andrews, Guard; C. O. McMullan, Center • Third Row: Jack Davis, Back; Amos Sexton, Guard.

JAMES JOHNSON
Head Coach

Coaches: Left to Right: Ellie Fearing, James Johnson, Howard Porter, Pete Everett.



Nineteen Forty-Seven—Forty-Eight

When the school joined the North State Conference several valuable players were ineligible for varsity football. Even with the losses of the players the team ended its first year in the conference remarkably well with brighter prospects for future seasons.

JOHN WYATT
Captain



The Squad

Front Row, left to right: Bill Darby, Jack Davis, Allen Berry, Charles Connor, John Wyatt, Paul Walters, C. O. McMullen, Henry Andrews, R. B. Lee, Frank Winesette, Roger Thrift, Hubert Musselwhite • Middle Row: Publicity Director Jack Hedgepeth, Ike Davis, Bob Miller, Henry Borneman, Keith Kilpatrick, John Young, Garrell Bass, Amos Sexton, Victor Bell, Willard Pendleton, Ray Long, Zack Manning, Stanley Peele, Don McKenzie, Sam Stell, Charles Little • Back Row: Manager Dennis Basnight, Assistant Coach Howard Parter, Student Coach Pete Everette, Charles Byrd, Lew Bauer, Jim Micheals, Allen Dupree, Buck Wilson, Abh Williams, Franz Holscher, Junior Hayes, Joe Polilli, Milton Glover, Johnny Smith, Leonard Kilpatrick, Max Eire, Manager-Trainer George Jackson, Student Coach Ellie Fearing and Head Coach Jim Johnson.



THE PIRATES — ON



BILL DARBY
Back

Each member of the team has worked hard to give the students the kind of football they want. Throughout the season they displayed their sportsmanship and technique to a high degree.



RAY LONG
Guard



STAN PEELE
End



WILLARD PENDLETON
Center



BUCK WILSON
Center

TO VICTORY!

When the practice season opened, eighty hopefuls reported—the largest number in the school's history. Remember too, the team brought the Bohunk back to East Carolina by defeating A. C. 12-7.



JOHNNY SMITH
Back



HUBERT MUSSELWHITE
Back



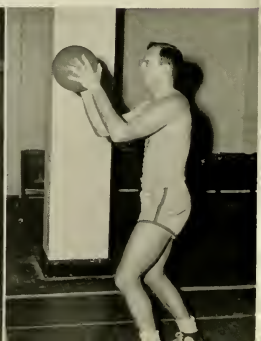


Coach Howard Porter giving instructions to Charlie Bill Moe.

PIRATES



Left to Right: Douglas Jones, Len Bauer, Frank Macnille, Larry James.



ON THE HARDWOOD

This year the Pirates brought the team into the first place position in the North State Conference. The season also brought several promising players to East Carolina. These Pirates really know how to handle that ball!



Left to Right: Managers Bill Hales, R. B. Lee and Jack Davis.

Left to Right: Jack Everton, Jack Wilson, Horace Cahoon, Mike Eure and Blainc Moye.



"The Girls' Day"

.. Society Dance ... "The Family Portrait."



.. Homecoming ... Sadie Hawkins Day ... Soda

Sharp Breakfast ... Eight (Black) Pops ...



Marjorie Thomas, *president*



Daphne Pake, *secretary*



Marshals: Herbert Taylor and Marion Ward.

POE

During the year the Poe Society presented speakers on Poe's life at their meetings to promote a better interest in his literature. With the other two societies, they sponsored a dance during the Winter quarter and gave receptions for the guests during the entertainment.



Jimmy Fryar, *treasurer*



Peggy Burnce, president



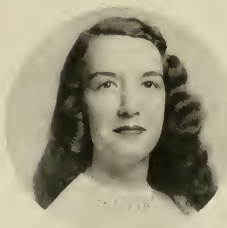
Nell Marie Webster, vice-president

EMERSON

An old saying is the nicest things come in small packages—which refers to the Emerson Society. This is a small group but an active one. As Ralph Waldo Emerson says: "Me too thy nobleness has taught, to master thy despair. The fountains of my hidden life, are through thy friendship fair."



Marshals: Josephine Herring and Eloise Morton.



Mary Humphrey, secretary



Mrs. Christine G. Smith

LANIER



Colleen Currier, president



Virginia Chapin, vice-president



Marshals: Seattle Harris, Beckie Lee Du-lis, and Rachel Pleasant.

The Lanier Society, named for the poet Sidney Lanier, has sought to further the mental, moral and social development of each member and to create a greater love for the best in literature, music and art. They began the work for the year by a friendly welcome to the Freshmen class with a party at the "Y" hut.



Kathleen Barker, secretary



Shirley Curran, treasurer

CHIEF MARSHAL

Miss Annie "Pat" Morton • CAROLINA BEACH, NORTH CAROLINA



MARSHALS

First Row: June Bass, Florence Boerckel, Frances Brown, Helen Brown, Anne Thompson Cates.



Second Row: Nancy Dilday, Tilly Eakes, Betty Ellis, Helen Gaskins, Esther Parker.



Third Row: Martha Pickett, Patsy Pridgen, Barbara Stovall, Nell Marie Webster, Nancy Wilson.



Nineteen Forty-Eight



Congratulations . . .

CLASS OF '48

BLOUNT-HARVEY COMPANY

"Eastern Carolina's Shopping Center"

The citizens of Greenville consider East Carolina Teachers College one of the community's greatest assets, and sincerely appreciate the value of having it in their midst.

Through their City Government and Chamber of Commerce, they extend hearty congratulations to the Student Body and Faculty for their achievements.

To the Graduates of the Class of 1948, and to the student body as a whole, they extend best wishes for success in future undertakings.

STUDENTS' SUPPLY STORES

- Book Store
- Soda Shop
- Stationery Store

Congratulations . . .

Seniors:—We are going to miss you—We are looking forward to the return of those of you who are coming back—To all of you we say:—

May you live as long as you like and have everything you like as long as you live.

BELK-TYLER COMPANY

"The Home of Better Values"

GREENVILLE, NORTH CAROLINA

*Best Wishes For Better Health
and Happiness*

**Carolina
Dairy**



GRADE
Milk & Ice Cream

Compliments of

Kares Brothers

Restaurant, Soda and News Service



"We Serve The Best"

Compliments of

**GUARANTY BANK
& TRUST CO.**



Established 1901. Time Tested, Safe,
Sound, Secure. Member Federal De-
posit Insurance Corporation. Capital
and Surplus—\$1,000,000.00.

*Congratulations to
The Seniors of 1948*

The Bootery

Quality Footwear

Greenville, North Carolina
New Bern, North Carolina
Washington, North Carolina

LAUTERES BROS., JEWELERS

Watches—Jewelry—China

Gifts, Watch and Clock Repairing

**HOTEL PROCTOR DINING
ROOM**

Featuring Popular Meals

Lunch 70c, Dinner \$1.25, Tarle de Hote
et a le carte Service

Compliments of

SCOTT'S DRY CLEANERS

Greenville, North Carolina

J. A. COLLINS AND SON

Furniture, Rugs, Stoves, and House
Furnishings

Try Us First

703 Dickinson Avenue
Greenville, North Carolina

**BOSTIC-SUGG FURNITURE
COMPANY, INC.**

Everything for the Home

Cash or Terms, Dial 2513

118 East Third St. Greenville, N. C.

Courtesy and Service Await you at

NORFOLK SHOE SHOP

Located off 5th Street, back of Old Towne
Inn on Cotanche Street

J. W. Bunch, Owner and Manager

PENNEY'S

Where the Nation Shops and Saves

EVERYTHING FOR THE ENTIRE
FAMILY

EFIRD'S DEPARTMENT STORE

In a Friendly City

"We Clothe the Entire Family"

Your Stationer

**CAROLINA
OFFICE EQUIPMENT CO.**

Printers, Stationers, Office Outfitters

Greenville, N. C.

Underwood Typewriters

Congratulations and Best Wishes

BISSETTE'S DRUG STORES

427 Evans Street

"Greenville's Finest Drug Store"

For The Best In Foods

HONEYCUTT'S MARKET

Compliments of

STAUFFER'S JEWELERS

Your Authorized Keepsake Diamond Dealer

Congratulations to

SENIORS OF 1948

SAIEED'S

Compliments of

WHITE'S STORES

Greenville, N. C. Washington, N. C.
Windsor, N. C. Ahoskie, N. C.
Scotland Neck, N. C. Mount Olive, N. C.

HOME FURNITURE STORE

"Right Price Furniture Store"

R. W. Davenport, Manager

701 Dickinson Ave. Greenville, N. C.

PEOPLE'S BAKERY

Patronize the College Soda Shop

BEST JEWELRY COMPANY

"Eastern Carolina's Leading Jewelers"

Established 1901. Honest Values
Prices That Defy Competition

"Your Jewelers"

Compliments of

LEE'S SPORT SHOP

"Everything for the Sportsman"

200 East Fifth St. Greenville, N. C.

Compliments of

C. HEBER FORBES

Greenville, North Carolina

Congratulations to the
GRADUATES OF 1948

**STATE BANK AND TRUST
COMPANY**

Compliments of

THE WAGON WHEEL

Short Orders Our Specialty

513 Dickinson Ave. Greenville, N. C.

Mr. Gentry Galloway Invites you to come
in and Dine at

OLDE TOWNE INN

Better known to students as O. T. I.

Congratulations and Best Wishes from

LOWE'S

Smart Apparel for Women

Greenville, North Carolina

TAFF OFFICE EQUIPMENT CO.

Remington Standard and Portable
Typewriters—New and Used

Compliments of

JOHN FLANAGAN BUGGY CO.

Your Ford, Lincoln, Mercury Dealer

Serving Greenville and Eastern Carolina

Since 1866

Congratulations to the

SENIOR CLASS OF 1948

MARGOLIS BROTHERS

Style Headquarters

Williamston, North Carolina

Visit

DIANA SHOP

For the Smartest in Junior Miss Fashions

Compliments of

BRODY'S

Ladies' Department Store

Greenville, N. C.

Congratulations from

PENDER'S STORE

DEE'S CLOTHING STORE

Men's and Women's Ready-To-Wear

Greenville, N. C.

Compliments of

J. KEY BROWN

Druggist

Five Points—Greenville, N. C.

School Supplies, Greeting Cards and
Stationery

A. B. ELLINGTON & CO.

426 Evans Street

*There's only one Williams for Your Smart
Apparel*

WILLIAMS' LADIES' STORE

Shop at

THE WATCH SHOP

205 East Fifth Street

GARRIS GROCERY

See Us First

Compliments of

MOSELY BROTHERS

INSURANCE

GREENVILLE FLORAL CO.

Phone 2827

315 Cotanche Street

Best Wishes from

**CLEM GARNER'S SERVICE
STATION**

WALLER AND SMITH

Photographers



OFFICIAL PHOTOGRAPHERS FOR *The Tecoan*



12 EAST HARGETT STREET

RALEIGH

NORTH CAROLINA



**CHARLOTTE
ENGRAVING
COMPANY**

Engravers and Designers of College Yearbooks

CHARLOTTE, N. C.



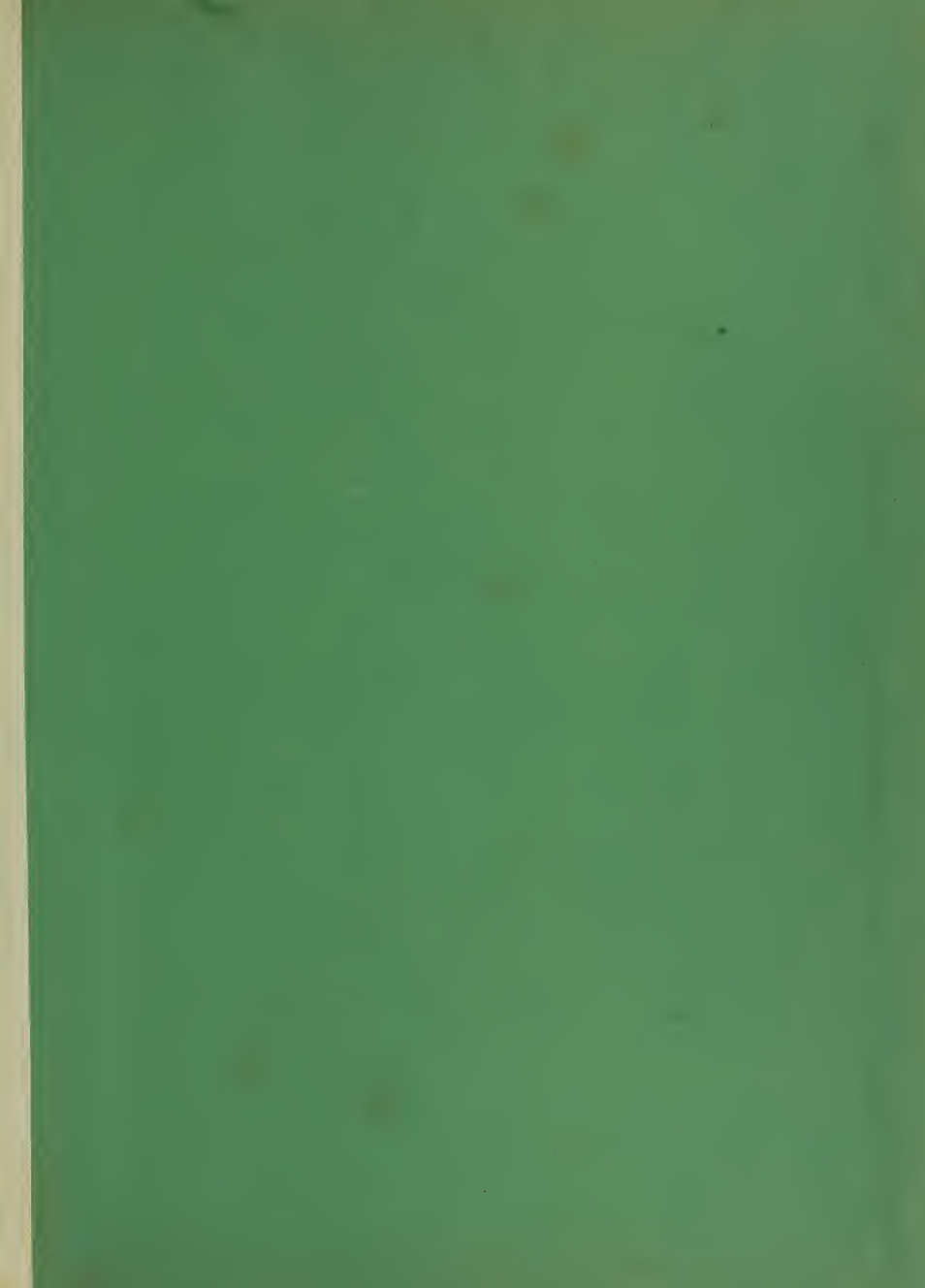


*The Lassiter
Press, Inc.*

Charlotte, North Carolina

SCHOOL PUBLICATIONS

PRINTERS OF YOUR
YEARBOOK



30372 0104 0240 9

