

NoCar  
Rare  
Oversize  
LB  
1927  
E3x  
1944



1944  
Teecon











THE TECOAN  
1944



*Christine Hellen*

EDITOR

*Dorothy Rae Davis*

BUSINESS MANAGER



# TECOAN

PUBLISHED BY THE STUDENT BODY OF  
EAST CAROLINA TEACHERS COLLEGE

GREENVILLE, NORTH CAROLINA

# 1944



## FOREWORD

WE SUBMIT to you the 1944 TECOAN so that in years to come you may pause to look backward—to reminisce as you grow older. We have attempted to portray life of the college and we hope that these portrayals will recall to you scenes that have become closely intertwined in your lives—and we hope, too, that they will cause you to relive the joyful days of college life at your dear Alma Mater.

Classes-Activities-Athletics-Features

# DEDICATION

TO MISS RUTH WHITE the students dedicate the 1944 TECOAN. The nature of her duties has brought her into contact with everyone of the students and it has been through her understanding, good judgment, and fairness to all that the students have learned to know, love, and respect her. She has been an inspiration to many and her splendid personality will always be a part of East Carolina Teacher's College.





*Miss Ruth White*

# IN MEMORIAM

WE DEDICATE THIS PAGE to the memory  
of William "Smut" Burks whom we will  
always remember for his outstanding  
leadership on the campus of East Carolina  
Teacher's College and, above all, for his  
winning personality.

*Born*

MARCH 26, 1921

*Died*

FEBRUARY 3, 1944





*Dining Hall*



*Cotton Hall*



*Classroom Building*

YOU HAVE BEEN TAUGHT to solve some hard problems while you have been with us. We trust that the power gained in the solution of these problems will enable you to overcome many of the difficulties which today confront both nations and individuals; some of these are the conquering and holding in check the arch enemies of freedom; the rehabilitation of wounded and war-worn soldiers and the reconstruction of a devastated world; the building up of an economic system that will prevent wars. The world is yours to fashion as you see fit. You have youth, ambition, training, tolerance, faith, devotion, and perseverance. May success be yours.

LEON R. MEADOWS, *President.*



*Dr. Leon R.  
Meadows*

# ADMINISTRATION



THE MESSAGE I wish to give you has been well expressed by Patience Strong when she says:

"One life and one alone we have to live upon this little earth. One life in which to learn so much—to seek and find and prose our worth. So waste no time on fruitless quests that get you nowhere in the end. The gold of Time is yours to squander or with care to use and spend."

ANNIE L. MORTON

PATRIOTISM MUST TRANSCEND selfishness and personalities. Loyalty must surpass expediency and personal ambition. Truth must ever be the paramount factor in the realization of freedom. Unbiased convictions based upon truth, honesty, and sincerity must be the sole guide of human life.

DR. HERBERT ReBARKER



# E. C. T. C.



DR. LUCILE TURNER  
*Direction of Instruction*  
*English*

DR. MEREDITH N. POSEY  
*English*

DR. B. B. BRANDT  
*Science*

MISS MAMIE E. JENKINS  
*English*

DR. DENVER E. BAUGHAN  
*English*

DR. W. S. DELOACH  
*Science*

MISS LOIS GRIGSBY  
*English*

DR. HERBERT REBARKER  
*Director of Instruction*  
*Mathematics*

DR. MARY CAUGHEY  
*Science*

MISS EMMA L. HOOPER  
*English*

MISS LOUISE WILLIAMS  
*Mathematics*

DR. CHRISTINE WILTON  
*Science*

MISS MARY H. GREEN  
*English*

DR. RONALD J. SLAY  
*Director of Instruction*  
*Science*

MISS HELEN FINCH  
*Nursery School*

# FACULTY



MRS. ETHEL R. WATTERS  
*Home Economics*

MISS MARGUERITE AUSTIN  
*Foreign Language*

DR. PAUL A. TOLL  
*Economics*

MISS MABEL LACY  
*Home Economics*

DR. A. D. FRANK  
*Director of Instruction*  
*History*

DR. P. W. PICKLESIMER  
*Director of Instruction*  
*Geography*

MISS PEARLE CHAPMAN  
*Home Economics*

DR. R. L. HILLDRUP  
*History*

MR. J. B. CUMMINGS  
*Geography*

MISS STELLA COX  
*Home Economics*

MR. E. C. HOLLAR  
*History*

DR. W. A. BROWNE  
*Geography*

MR. RALPH C. DEAL  
*Director of Instruction*  
*Foreign Language*

DR. BEECHER FLANAGAN  
*Economics*

MISS KATE W. LEWIS  
*Director of Instruction*  
*Art*





MISS MADELOE POWERS  
*Art*

DR. E. R. BROWNING  
*Director of Instruction  
Commerce*

MR. O. A. HANKER  
*Physical Education*

DR. KARL V. GILBERT  
*Director of Instruction  
Music*

MISS LENA C. ELLIS  
*Commerce*

MISS NELL STALLINGS  
*Physical Education*

MR. CHARLES FISHER  
*Music*

MISS AUDREY DEMPSEY  
*Commerce*

DR. CARL L. ADAMS  
*Director of Instruction  
Education and Psychology*

MISS LOIS V. GORRELL  
*Music*

MISS VELMA LOWE  
*Commerce*

DR. E. L. HENDERSON  
*Director of Instruction  
Administration and Supervision*

MISS GUSSIE KUYKENDALL  
*Music*

MRS. JOYCE HILL HALES  
*Commerce*

DR. HUBERT C. HAYNES  
*Education and Psychology*



# FACULTY



MISS LUCILLE CHARLTON  
*Education and Psychology*

MISS ANNIE C. NEWELL  
*Education*

MISS FRANCES WAHL  
*Principal  
Training School*

MISS ANNE L. REDWINE  
*Critic Teacher  
First Grade*

MISS RUTH FAISON  
*Critic Teacher  
First Grade*

MISS LUCY NULTON  
*Critic Teacher  
Second Grade*

MISS CHRISTINE JOHNSTON  
*Critic Teacher  
Second Grade*

MISS EUNICE MCGEE  
*Critic Teacher  
Third Grade*

MRS. LINDSAY SAVAGE  
*Critic Teacher  
Third Grade*

MISS ALMA BROWNING  
*Critic Teacher  
Fourth Grade*

MISS LOUISE GALPHIN  
*Critic Teacher  
Fourth Grade*

MISS ELIZABETH HYMAN  
*Critic Teacher  
Sixth Grade*

MISS CLEO RAINWATER  
*Critic Teacher  
Fifth Grade*

MISS RUTH MODLIN  
*Critic Teacher  
Fifth Grade*

MISS ESTELLE GREENE  
*Critic Teacher  
Mathematics*



MISS DEANIE BOONE HASKETT  
*Critic Teacher*  
*English*

MISS ALICE STRAWN  
*Critic Teacher*  
*Home Economics*

MISS MARGARET SAMMON  
*Assistant Librarian*

MISS JESSIE BELL LEWIS  
*Critic Teacher*  
*English*

MRS. CHRISTINE TRIPPE  
*Critic Teacher*  
*Science*

MISS ELIZABETH WALKER  
*Assistant Librarian*

MR. H. A. MCDOUGLE  
*Critic Teacher*  
*Music*

MR. ELMER ROBINSON  
*Critic Teacher*  
*Science*

MR. F. D. DUNCAN  
*Treasurer*

MISS ONA SHINDLER  
*Critic Teacher*  
*Music*

MR. R. B. STARLING  
*Critic Teacher*  
*History*

MRS. MILDRED OWENS  
*Bookkeeper*

MISS LOUISE SWANN  
*Critic Teacher*  
*Home Economics*

MR. WENDELL W. SMILEY  
*Librarian*

MISS HAZEL WILLIS  
*Secretary to Treasurer*

# FACULTY



MRS. JACK EDWARDS  
*Assistant Cashier*

MISS ANNIE L. MORTON  
*Dean of Women*

MISS STELLA GROGAN  
*Head Nurse*

MISS JANIE EAKES  
*Secretary to Treasurer*

MRS. ALEXANDER FAY SMITH  
*Assistant Dean*

MISS STOKES  
*Nurse*

MISS OLA S. ROSS  
*Assistant Registrar*

MISS RUTH WHITE  
*Counselor*

MRS. L. L. RIVES  
*Stewardess*

MISS TOMMIE LOU CORBITT  
*Secretary to Registrar*

MISS SALLIE NORWOOD  
*Counselor*

MRS. AGNES BARRETT  
*Secretary to President*



The  
Classes We Are In

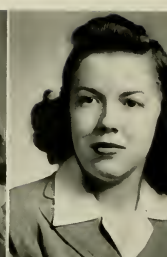


SENIORS



## SENIOR OFFICERS

DAVE OWENS . . . . . *President*  
 DOROTHY PEARSALL . . . . . *Vice-President*  
 MILDRED JOHNSON . . . . . *Secretary*  
 MARGARETTE RICKS . . . . . *Treasurer*



Lela Adams  
Jessilu Aman

Ruth Y. Allen  
Edna Earle Averette

Jennie C. Alston  
Aldine Barnhill

Viola Alston  
Annie Bartholomew

# SENIORS

LELA ADAMS . . . . . Blounts Creek, N. C.  
*English—Social Science*

Louisburg College, 1, 2; English Club, 4; Poe Society, 4; Alpha Sigma, 4.

RUTH Y. ALLEN . . . . . Creedmoor, N. C.  
*Commerce and English*

JENNIE C. ALSTON . . . . . Louisburg, N. C.  
*Home Economics and Science*

Louisburg College, 1, 2; Y. W. C. A., 3; Home Economics Club, 3; Emerson Society, 3, 4; Science Club, 4.

VIOLA ALSTON . . . . . Louisburg, N. C.  
*English—History*

Louisburg College, 1, 2; Y. W. C. A., 3; Y. D. C., 3, 4; International Relations Club, 4; Emerson Society, 3, 4; W. A. A., 3, 4.

JESSILU AMAN . . . . . Jacksonville, N. C.  
*Primary*

Association of Childhood Education, 2, 4; W. A. A., 2, 3; Y. W. C. A., 1, 2.

EDNA EARLE AVERETTE . . . . . Oxford, N. C.  
*Primary*

Campbell College, 1, 2; Y. W. C. A., 3, 4; B. S. U. Council, 1; Woman's Chorus, 3, 4.

ALDINE BARNHILL . . . . . Greenville, N. C.  
*Commerce and Mathematics*

Y. W. C. A., 4; M. S. A., 3; Mathematics Club, 3, 4; Commerce Club, 3; W. A. A., 4.

ANNIE BARTHOLOMEW . . . . . Spring Hope, N. C.  
*Physical Education and Commerce*

Commerce Club, 1, 2, 3, 4; W. A. A., 1, 2, 3, 4; Head of Field Hockey, 3; Treasurer W. A. A., 4; Alpha Iota Sorority, 2, 3, 4; Vice-President, 3, 4; Y. W. C. A., 2; Secretary Women's Judiciary, 4; Senior Superlative.





RENA BATEMAN  
Helen Louise Blanchard

ED BEDDINGFIELD  
Virginia Lee Bledsoe

BILLIE MARIE BENNETT  
Blennie Blue

GERTRUDE BERRY  
Alma Gray Bowden

# SENIORS

RENA BATEMAN . . . . . Ayden, N. C.

*Business Education and Mathematics*

Band, 1, 2, 4; Alpha Iota Sorority, 2, 3, 4; Historian, 3; Pi Omega Pi Fraternity, 4; Treasurer, 1; Commerce Club, 4; Mathematics Club, 4; Y. W. C. A., 4.

ED BEDDINGFIELD . . . . . Clayton, N. C.

*Science*

BILLIE MARIE BENNETT . . . . . Burnsville, N. C.

*Home Economics and Science*

Asheville College, 1, 2; "Y" Cabinet, 2; Y. W. C. A., 1, 2, 3, 4; Home Economics Club, 3, 4; Y. D. C., 3; Science Club, 3; Poe Society, 4; Student Cooperative Council, 4.

GERTRUDE BERRY . . . . . Timberlake, N. C.

*Grammar*

Mars Hill College, 1, 2; Y. W. C. A., 3, 4; Cabinet, 4; Association for Childhood Education, 1; Lanier Society, 4; Cotten House Committee, 4; B. S. U. Council, 4; Senior Class Representative for TECOAN.

HELEN LOUISE BLANCHARD . . . . . Wallace, N. C.

*Grammar*

Y. W. C. A., 1, 2, 3, 4; A. C. E., 2, 3, 4; Secretary-Treasurer, 4; Future Teachers of America, 4; Alumni Daughters and Sons, 1, 2, 3, 4; Y. W. A., 1, 2, 3, 4; Representative on "Study Conditions in Dormitory Committee," 3, 4.

VIRGINIA LEE BLEDSOE . . . . . New Bern, N. C.

*Physical Education and Commerce*

W. A. A., 1, 2, 3, 4; Cabinet, 3; President, 4; Young Democrat Club, 1; Varsity Field Hockey, 1, 2, 3, 4; Varsity Soccer, 1, 2, 3, 4; Varsity Basketball, 2; Head of Basketball, 3; Varsity Volley Ball, 2, 3, 4; Tennis, 2; Treasurer Student Cooperative Government Association, Summer, 3; House Committee, 4; Cheerleader, 4; Student Cooperative Council, 4.

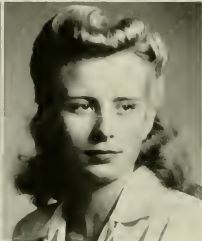
BLENNIE BLUE . . . . . Carthage, N. C.

*Grammar*

Y. W. C. A., 1, 2, 3, 4; Association for Childhood Education, 3, 4; P. S. A., 1, 2, 3, 4; Cabinet, 3, 4; W. A. A., 1.

ALMA GRAY BOWDEN . . . . . Portsmouth, Va.

*Home Economics and Social Science*



Kathryn Lassiter Boyd  
Norma Lyde Brown

Lillian Maitland Boyette  
Rosalie Brown

Virginia Dare Britton  
Georgia Bunch

Frances Brown  
Emily Burns

# SENIORS

KATHRYN LASSITER BOYD . . . Jackson, N. C.

*Home Economics and Science*

Home Economics Club, 1, 2; Science Club, 1, 2, 3; A Cappella Choir, 1, 2; Y. W. C. A., 2, 3; Methodist Student Council, 3; Young Democrat Club, 2, 3; W. A. A., 1.

LILLIAN MAITLAND BOYETTE . . . Ahoskie, N. C.

*Primary*

W. C. U. N. C., 1; W. A. A., 2, 3, 4, Secretary, 3; Tecoan Representative, 4; Association of Childhood Education, 3, 4; Child Welfare Chairman, 4; M. S. A., 2, 3, 4, Executive Board, 3, President, 4; Associate Business Manager Tecoan, 3, 4; President Student Cooperative Government Association, Sumner, 3; Drama Major, 2, 3; Interfaith Council, 4, Secretary, 4; Glee Club, 4; Entertainment Committee, 4; Varsity Basketball, 2; Senior Superlative, Features, Who's Who Among Students in American Universities and Colleges.

VIRGINIA DARE BRITTON . . . Pendleton, N. C.

*Grammar*

College Marshal, 1; Lanier Society, 2; W. A. A., 2, 3; Big Sister, 3; Varsity Basketball, 1.

FRANCES BROWN . . . Wilson, N. C.

*Music and History*

NORMA LYDE BROWN . . . Beaulville, N. C.

*Commerce and Social Science*

ROSALIE BROWN . . . Greenville, N. C.

*English and Music*

M. S. A., Cabinet, 1; Poe Society, 1, 2, 3, 4, Reporter, 2; Society Contest Play, 1; *Teco Echo*, 1, 2, 3, 4, Editor-in-Chief, 3, Associate Editor, 4; College Marshal, 4; Glee Club, 1, 2, 3, 4; Band, 2, 3; Chi Pi Players, 1, 2, 3, 4, Publicity Manager, 4; "Double Door," 2; English Club, 1, 2, 3, Reporter, 2; Jarvis Forensic Club, 1, 2, Reporter, 2; Cheerleader, 2, 3; *Pieces O' Eight*, 1, 2; Tecoan, 2; Y. D. C., 1, 2, 3; Representative to Student Legislature, 1, 2; Time Keeper, 1; Senior Superlative, Who's Who Among Students in American Universities and Colleges.

GEORGIA BUNCH . . . Hobbsville, N. C.

*Primary*

EMILY BURNS . . . Goldston, N. C.

*Home Economics and Science*



Mary Virginia Butt  
Murle Tucker Chapman

Ella Carawan  
Dixie Chappell

Verna Carraway  
Emma Grace Clark

Nell Louise Carter  
Sallie Marie Cobb

# SENIORS

MARY VIRGINIA BUTT . . . . . Aurora, N. C.

*Home Economics and Social Science*

Young Democrat Club, 1, 2, 3; Emerson Society, 3, 4; Y. W. C. A., 1, 2; W. A. A., 1, 2; Home Economics Club, 1, 2; Interfaith Council, 4; President Episcopal Auxiliary, 4; Member Episcopal Auxiliary, 1, 2, 3; Social Science Fraternity, 4; Proctor, 3.

ELLA CARAWAN . . . . . Swan Quarter, N. C.

*Home Economics and Social Science*

Home Economics Club, 1, 2, 3, 4, Secretary, 3; Lanier Society, 3, 4; W. A. A., 1, 2, 3, 4; Science Club, 2, 3, 4; Big Sister, 3.

VERNA CARRAWAY . . . . . Goldsboro, N. C.

*Science and Physical Education*

NELL LOUISE CARTER . . . . . Hobbsville, N. C.

*Home Economics and Science*

MURLE TUCKER CHAPMAN . . . . . Grifton, N. C.

*Primary*

Y. W. C. A., 1, 2; Emerson Society, 1, 2, 3, 4; W. A. A., 1, 2; Association of Childhood Education, 1, 2, 3, 4.

DIXIE CHAPPELL . . . . . Belvidere, N. C.

*Commerce and History*

W. A. A., 2, 3, 4, Cabinet, 4; Varsity Soccer and Field Hockey, 3; Commerce Club, 2, 3, 4; Y. W. C. A., 1, 2, 4; International Relationship Club, 2, 3, 4; Women's Judiciary, Treasurer, 4; Poe Society, 1, 2, 4; Pi Omega Fraternity, 3, 4.

EMMA GRACE CLARK . . . . . Everetts, N. C.

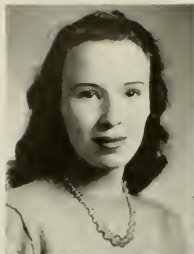
*Grammar*

Lanier Society, 2, 3, 4, Vice-President, 4; Young Democrat Club, 2; Y. W. C. A., 2, 3, 4; Association of Childhood Education, 3, 4; Future Teachers of America, 4; Alumni Daughters and Sons, 1, 2, 3, 4.

SALLIE MARIE COBB . . . . . Merry Hill, N. C.

*History and English*

Y. W. C. A., 1, 2; International Relations Club, 2, 3, 4, Vice-President, 3, President, 4; English Club, 2, 3; Student Cooperative Council, 4.



Elwanda Coker  
Garnette Cordle

Roena Elizabeth Collins  
Mary Elma Cox

Nina H. Cook  
Mary Alice Cozart

Mildred Copeland  
Elizabeth Creech

# SENIORS

ELWANDA COKER . . . . . Whitakers, N. C.  
*Commerce and Physical Education*

ROENA ELIZABETH COLLINS . . . Angier, N. C.  
*English and Social Science*

A Cappella Choir, 1, 2, 3, 4; Y. W. C. A., 3, 4; W. A. A., 3; Young Democrat Club, 2; Alumni Sons and Daughters, 1, 2, 3, 4; Publicity Committee, 4; English Club, 1, 2, 3, 4; President, 4; Future Teachers of America, 4; Student Co-operative Government Association, 4; Lanier Society, 1, 2, 3, 4; Phi Sigma Pi, 4.

NINA H. COOK . . . . . Lenoir, N. C.  
*Mathematics and English*

Mathematics Club, 2, 3, 4; *Teco Echo* Reporter, 4; English Club, 2, 3; W. A. A., 2; Y. W. C. A., 2, 3, 4; Big Sister, 3; Fleming Hall House Council, 4; House and Grounds Committee, 4.

MILDRED COPELAND . . . . . Hertford, N. C.  
*Home Economics and Science*

Home Economics Club, 1, 2, 3; Y. W. C. A., 1, 2; Lanier Society, 1, 2; 4-H Club, 3; V. W. A., 1, 2, 3; V. W. A. Council, 3; W. A. A., 2.

GARNETTE CORDLE . . . . . Seaboard, N. C.  
*Home Economics and Science*

Chi Pi Players, 1; Glee Club, 1, 2; Editorial Staff *Pieces O' Eight*, 2; Business Staff *Teco Echo*, 2; Dormitory Proctor, 2; Business Manager *Pieces O' Eight*, 3, 4; Secretary Y. D. C., 3; Social Committee, 3; Business Manager Handbook, 4; Publications Board, 3, 4.

MARY ELMA COX . . . . . Goldsboro, N. C.  
*Primary*

W. C. T. C., 1; Alpha Phi Sigma, 1; B. S. U. Council, 1, 2, 3, 4; Y. W. C. A., 2, 3; Association of Childhood Education, 4.

MARY ALICE COZART . . . . . Oxford, N. C.  
*Home Economics and Social Science*

ELIZABETH CREECH . . . . . Selma, N. C.  
*Home Economics and Social Science*



Doris Crosby  
Dorothy Rae Davis

Marie Darden  
Ruth Davis

Bonnie Davis  
Freeda Davis

Doris Davis  
Lucille Davis

# SENIORS

DORIS CROSBY . . . . . Wilson, N. C.

*Primary*

Y. W. C. A., 1, 2; Association of Childhood Education, 1, 2, 3, 4; Emerson Society, 1, 2, 3, 4; Marshal, 2; W. A. A., 1, 2.

MARIE DARDEN . . . . . Kenly, N. C.

*Mathematics and Commerce*

BONNIE DAVIS . . . . . Micro, N. C.

*Grammar*

DORIS DAVIS . . . . . Goldsboro, N. C.

*English and Social Science*

DOROTHY RAE DAVIS . . . . . Seaboard, N. C.

*Grammar*

*Terc Echo* Representative, 1; College Marshal, 2, 3; Lanier Society, 1, 2, 3, 4, President, 3; Associate Business Manager TEOCAN, 2, 3; Publication Board, 4; Business Manager TEOCAN, 1; Young Democrat Club, 2, 3; W. A. A., 2, 3; College Social Committee, 2; Chi Pi Players, 1.

RUTH DAVIS . . . . . Pikeville, N. C.

*Grammar*

Y. W. C. A., 3, 4; "Y" Cabinet, 4; Lanier Society, 3, 4, Secretary, 4; Social Committee, 4; Big Sister, 3; M. S. A., 1, 2, 3.

FREEDA DAVIS . . . . . Mt. Olive, N. C.

*Primary*

LUCILLE DAVIS . . . . . Farmville, N. C.

*Commerce and French*

Peace Junior College, 1, 2; Commerce Club, 2, 3.



Annadelle Dawson  
Margie Dudley

Pansie Deal  
Espy Eakins

Wilma Dean  
Doris Edwards

Rachel Dixon  
Annie Kate Evans

# SENIORS

ANNADELLE DAWSON . . . . . Dunn, N. C.  
*Home Economics and Social Science*

PANSIE DEAL . . . . . Asheville, N. C.  
*Home Economics and Social Science*

Asheville College, 1; Y. W. C. A., 2, 3, 4; Y. W. A., 2, 3, 4; F.H. Club, 2, 3, 4; Home Economics Club, 2, 3, 4; Alpha Sigma, 4.

WILMA DEAN . . . . . Oxford, N. C.  
*Grammar*

Y. W. C. A., 2, 3, 4; W. A. A., 2; Association of Childhood Education, 2, 3, 4; Future Teachers of America, 4.

RACHEL DIXON . . . . . New Bern, N. C.  
*Home Economics and Science*

MARGIE DUDLEY . . . . . Greenville, N. C.  
*Home Economics and Science*

*Town Echo*, 1, 2, 3, 4, Associate Editor, 2, 3, 4; *Chi Psi*, 1, 2, 3, 4, Reporter, 1, 3, Vice-President, 2; Co-Editor *Pieces Of Eight*, 1; Student Cooperative Council, 4; Y. W. C. A., 3, 4; Marshal, 4; Feature, 1; *TEXACO*, 4; *Poe Society*, 4; Young Democrat Club, 3; Publication Board, 4; *Who's Who Among Students in American Universities and Colleges*.

ESPY EAKINS . . . . . Ivanhoe, N. C.  
*Home Economics and Social Science*  
Home Economics Club, 2, 3, 4; W. A. A., 3, 4.

DORIS EDWARDS . . . . . Chicod, N. C.  
*History and Science*

ANNIE KATE EVANS . . . . . Clinton, N. C.  
*Home Economics and Science*





Hazel Gray Evans  
Helen Flynn

Alice Ferrell  
Beatrice Forrest

Amy Amanda Floyd  
Margaret Gerock

Marjorie Fitzgerald  
Jessie B. Gooden

# SENIORS

HAZEL GRAY EVANS . . . . . Greenville, N. C.

*English and History*

Young Democrat Club, 1; International Relations Club, 2, 3, 4; Sigma Phi Alpha, 3, 4.

ALICE FERRELL . . . . . Clayton, N. C.

*English and History*

Campbell, 1; Y. W. C. A., 3, 4, Cabinet, 3, 4; English Club, 2, 3, 4, Secretary, 4.

AMY AMANDA FLOYD . . . . . Barnesville, N. C.

*Commerce and English*

Y. W. C. A., 1; Young Democrat Club, 1; Lanier Society, 2; Commerce Club, 2, 3, 4, President, 4; Alpha Iota Sorority, 2, 3; Pi Omega Pi Fraternity, 4; Big Sister, 3; Student Cooperative Council, 4; Corresponding Secretary Alpha Iota Sorority, 3; Social Chairman Commerce Club, 3.

MARJORIE FITZGERALD . . . . . Selma, N. C.

*Primary*

HELEN FLYNN . . . . . Washington, N. C.

*Home Economics and Science*

Young Democrat Club, 1, 2, 3; Home Economics Club, 1, 2; Y. W. C. A., 1, 2, 3; Junior "Y" Cabinet; Senior "Y" Cabinet, 2, 3; Delegate to Blue Ridge, 2; W. A. A., 1, 2, 4; Emerson Society, 1, 2, 3, 4; Chi Pi Players, 2, 3, 4, Vice-President, 4; Contest Play, 2; Budget Committee, 1; Social Committee, 2; Woman's Student Government, 3; House President, 3; Courtesy Card Committee, 3, Chairman, 4; Student Cooperative Council, 4; Publications Board, Chairman, 4; Class Secretary, 3; Senior Class Council Representative, 4; Who's Who Among Students in American Universities and Colleges.

BEATRICE FORREST . . . . . Winterville, N. C.

*Grammar*

MARGARET GEROCK . . . . . Maysville, N. C.

*Grammar*

Y. W. C. A., 1, 2, 3, 4; W. A. A., 1, 2, 3, 4; Lanier Society, 1, 2, 3; Big Sister, 3, 4; Associate Business Manager TEOAN, 4.

JESSIE B. GOODEN . . . . . Clarkton, N. C.

*Home Economics and Science*

Home Economics Club, 1, 2, 3; Science Club, 3; Y. W. C. A., 3; Poe Society, 3; Vice-President Women's Judiciary, 3; Vice-President Jarvis Forensic Club, 3.



Lucy Foard Greene  
Edna Harrell

Margaret Pugh Harden  
Myrtle Harris

Jane P. Hardee  
Rosalyn Harris

Frances Hargrove  
Wilma Leigh Hart

# SENIORS

LUCY FOARD GREENE . . . . . Mocksville, N. C.  
*Grammar*

Lanier Society, 1, 2; A. C. E., 2; Future Teachers of America, 3, 4; Secretary, 4.

MARGARET PUGH HARDEN . . . Windsor, N. C.  
*Home Economics and Social Science*

Poe Society, 1, 2, 3, 4; Marshal, 4; Home Economics Club, 1, 2, 3; Y. W. C. A., 1, 2; Young Democrat Club, 1, 2, 3; Social Science Fraternity, 4; *Pieces O' Eight*, 3, 4; Inter-Society Committee, 4.

JANE P. HARDEE . . . . . Greenville, N. C.  
*Math and English*

Poe Society, 1; Mathematics Club, 1; Young Democrat Club, 1; M. S. A., 1, 2, 3, 4; Day Student Committee, 4; Vice-President Day Student Committee, 4; Student Cooperative Council, 4.

FRANCES HARGROVE . . . . . Dunn, N. C.  
*Commerce and Social Science*

EDNA HARRELL . . . . . Wilmington, N. C.  
*Primary*

MYRTLE HARRIS . . . . . Greenville, N. C.  
*Primary*

Louisburg, 1, 2; Y. W. C. A.; Association of Childhood Education.

ROSALYN HARRIS . . . . . Arcola, N. C.  
*Primary*

WILMA LEIGH HART . . . . . Virgilina, Va.  
*Music and Social Science*

Campbell, 1, 2; Choir, 3; Orchestra, 3; Band, 3; Glee Club, 4; Poe Society, 3, 4.





Mary Alice Hastings  
Iris Elizabeth Herring

Vera Hastings  
Mary Herring

Laura Hearne  
Betsy Hobgood

Christine Hellen  
Doris Hockaday

# SENIORS

MARY ALICE HASTINGS . . . Camden, N. C.  
*Home Economics and Social Science*

Y. W. C. A., 1; Home Economics Club, 3; Lanier Society, 3; 4; Alumni Daughters and Sons, 2.

VERA HASTINGS . . . Camden, N. C.  
*Grammar*

W. A. A., 2; Alumni Daughters and Sons, 2; A. C. E., 3, 4; Y. W. C. A., 3; Lanier Society, 2, 3, 4.

LAURA HEARNE . . . Greenville, N. C.  
*Commerce and English*

Band, 1, 2, 3, 4; Secretary-Treasurer, 2; Orchestra, 1, 2; Alpha Iota Sorority, Zeta Delta Chapter, 3, 4; *Teco Echo* Reporter, 1; Associate Editor *TECOAN*, 3, 4; Secretary-Treasurer Day Student Committee, 4; Pi Omega Pi Fraternity, 4.

CHRISTINE HELLEN . . . Greenville, N. C.  
*Primary*

Treasurer, 1; *TECOAN* Representative, 2, 3; Chi Pi Players, 2, 3, 4; Treasurer, 2; "Little Black Sambo," 2; Senior Play, 3; Student Council, 3; Poe Society, 1, 4; Associate Editor *TECOAN*, 3, Editor-in-Chief, 4; Publication Board, 4; Young Democrat Club, 1, 2, 3; Association of Childhood Education, 4; B. S. U. Council, 4; Senior Superlative; Who's Who Among Students in American Colleges and Universities.

IRIS ELIZABETH HERRING . . . Watha, N. C.  
*Primary*

Choir, 1; Band, 3; Woman's Glee Club, 2, 3, 4; Poe Society, 4; Association of Childhood Education, 2, 3, 4; Y. W. C. A., 1, 3, 4; Alumni Daughters and Sons, 2, 3.

MARY HERRING . . . Warsaw, N. C.  
*Home Economics and Science*

Y. W. C. A., 1, 2, 3; Home Economics Club, 1, 2, 3; Science Club, 3; Poe Society, 3.

BETSY HOBGOOD . . . Greenville, N. C.  
*Commerce and English*

Poe Society, 1, 2, 3; Budget Committee, 3; Chi Pi Players, 1, 2, 3; Alpha Iota Sorority, 3; Secretary, 3; Alumni Sons and Daughters, 1, 2, 3.

DORIS HOCKADAY . . . Raleigh, N. C.  
*Home Economics and Science*

Woman's Student Government Association, 2; House President, 3; Business Staff *Teco Echo*, 1; Associate Editor *TECOAN*, 2; *Pieces O' Eight*, 2; Secretary Student-Faculty Relations Committee, 4; Publications Board, 1; Y. D. C., 3; Chi Pi Players, 1; Chairman Bond Day Committee, 3; Who's Who in American Colleges and Universities.



Genevieve Hodgkin  
Sybil Horton

Anne Holloman  
Helen Lorraine House

Louise Holloman  
Carol Leigh Humphries

Ophelia Hooks  
Lillian Hunter

# SENIORS

GENEVIEVE HODGIN . . . . . Goldsboro, N. C.  
*Music and Grammar*

Louisburg College, 1; Y. W. C. A., 2, 3; Choir, 1, 2, 3, 4;  
Association of Childhood Education, 4; M. S. A. Cabinet, 2,  
3, 4; Orchestra, 3, 4.

ANNE HOLLOMAN . . . . . Aulander, N. C.  
*Grammar*

LOUISE HOLLOMAN . . . . . Goldsboro, N. C.  
*Primary*

Lanier Society, 1, 2; Emerson Society, 3; Y. W. C. A., 3;  
Association of Childhood Education, 3.

OPHELIA HOOKS . . . . . Whiteville, N. C.  
*History*

Chi Pi Players, 1, 2, 3, 4, President, 2, 3. Co-Stage Manager,  
2, 3. Co-Publicity Manager, 2; Co-Stage Manager Senior Play,  
2, 4; Co-Stage Manager "Martha," 2; English Club, 3; Y. D.  
C., 2, 3; Representative State Student Legislature, 1; State  
Contest Play, 2.

SYBIL HORTON . . . . . Louisburg, N. C.  
*Home Economics and Social Science*

HELEN LORRAINE HOUSE . . . . . Bethel, N. C.  
*Home Economics and Social Science*

CAROL LEIGH HUMPHRIES . . . . . Woodsdale, N. C.  
*Grammar*

B. S. U., 1, 2, 3, 4. Extension Director, 2, President, 4;  
Y. W. C. A., 1, 2, 3, 4; Vice-President Freshman "Y," 1;  
Nightwatch Chairman, 2, Vice-President, 3; Association of  
Childhood Education, 2, 3, 4. Vice-President, 3, Reporter,  
1; Emerson Literary Society, 1, 2, 3, 4; Vice-President, 3;  
College Marshal, 4; Vice-Chairman Interfaith Council, 4;  
Senior Superlative, 1; Who's Who Among Students in Amer-  
ican Universities and Colleges.

LILLIAN HUNTER . . . . . Beulaville, N. C.  
*Grammar*

Y. W. C. A., 2, 3; Association of Childhood Education, 3,  
4; Future Teachers of America, 3, 4; W. A. A., 3, 4; Lanier  
Society, 2, 3.



Louise Hunter  
Mildred Johnson

Helen James  
Mrs. Burchie Smith Johnston

Nell James  
Evelyn Louise Jones

Mary Emma Jefferson  
Hazel Dell Jones

# SENIORS

LOUISE HUNTER . . . . . Beulaville, N. C.

## Grammar

Y. W. C. A., 2, 3; Association of Childhood Education, 3, 4; Future Teachers of America, 3, 4; W. A. A., 3, 4; Lanier Society, 2, 3; B. S. U. Cabinet, Summer.

HELEN JAMES . . . . . Bethel, N. C.

## Primary

Emerson Society, 1; Lanier Society, 2, 3, 4; Teco Echo Staff, 2, 3; Secretary Budget Committee, 3; Business Staff Troop, 4; Senior Superlative.

NELL JAMES . . . . . Robersonville, N. C.

## Commerce and Social Science

MARY EMMA JEFFERSON . . . . . Fountain, N. C.

## Foreign Language and History

International Relations Club, 2, 3, 4; Sigma Pi Alpha Fraternity, 2, 3, 4; Vice-President, 3; Marshal, 2; Poe Society, 1, 2, 3, 4; Vice-President Class, 3; Y. W. C. A., 1, 2, 3; Young Democrat Club, 1; House President, 4; Future Teachers of America, 1.

MILDRED JOHNSON . . . . . Four Oaks, N. C.

## Commerce and History

International Relations Club, 2, 3, 4; Secretary, 3; Young Democrat Club, 1; Commerce Club, 1, 2, 3, 4; Alpha Iota Sorority, 2, 3, 4; Parliamentarian, 3; Chaplain, 4; Pi Omega Pi Fraternity, 4; Class Secretary, 4; Superlative.

MRS. BURCHIE SMITH JOHNSTON, Belhaven, N. C.

## Home Economics

Pieces O' Eight, 1; Associate Editor, 2, 4; Editor-in-Chief, 3; College Historian, 4; Handbook Committee, 4; Y. W. C. A., 1, 2, 3; Young Democrat Club, 1, 2; M. S. A., 1, 2, 3; Poe Society, 3, 4; Who's Who in American Universities and Colleges.

EVELYN LOUISE JONES . . . . . Greenville, N. C.

## Commerce and Social Science

Alpha Iota Sorority, 2, 3, 4; Secretary, 3; Pi Omega Pi Fraternity, 4; Young Democrat Club, 2; Women's Day Student Council, 4.

HAZEL DELL JONES . . . . . Farmville, N. C.

## Primary

Association of Childhood Education.



Katherine Jones  
Edna Earle Lang

Floriedel Shaw Kennedy  
Grace Lee

Elizabeth Kittrell  
Catherine Lewis

Virginia Knowles  
Margaret Overton Lewis

# SENIORS

KATHLRINE JONES . . . . . Pink Hill, N. C.

*Commerce*

FLORIEDEL SHAW KENNEDY . . . Clinton, N. C.

*Commerce and Music*

Flora Macdonald College, 1; E. C. T. C., 2, 3, 4; Emerson Society, 2, 3, 4; A Cappella Choir, 2, 3; Mixed Chorus, 1; Band, 2, 3, 4; Orchestra, 2, 3; W. A. A., 2, 3, 4; Swing Band Manager, 1; Commerce Club, 2, 3, 4; Y. W. C. A., 1.

ELIZABETH KITTRELL . . . . . Kittrell, N. C.

*Foreign Languages and Mathematics*

Y. W. C. A., 2, 3, 4; Young Democrat Club, 1, 2; Mathematics Club, 1, 2, 3, 4; *Teco Echo* Representative, 3; Big Sister, 3, 4; Phi Sigma Chapter of Sigma Pi Alpha, 1, 2, 3, 4; Secretary-Treasurer, 3; President, 4; Methodist Student Council, 2, 3, 4; Handbook Committee, 1.

VIRGINIA KNOWLES . . . . . Wallace, N. C.

*Physical Education and Social Science*

Emerson Society, 1, 2, 3, 4; "Miss Emerson," 2; Marshal, 4; W. A. A., 2, 3, 4; Basketball, Varsity, 2, 3, 4; Tennis, Varsity, 2, 3, 4; Volley Ball, Varsity, 3, 4; Soccer, Varsity, 2, 3; Hockey, Varsity, 2, 3; Softball, Varsity, 2, 3, 4; Head of Archery, 4; W. A. A. Cabinet, 4; Alpha Sigma, 4; Vice-President, 4; Superlative,

EDNA EARLE LANG . . . . . Gatesville, N. C.

*Grammar*

Y. W. C. A., 1, 2, 3, 4; Association of Childhood Education, 2, 3; Future Teachers of America, 3, 4; Treasurer, 1; B. S. U. Council, 3, 4; A Cappella Choir, 2, 3, Secretary, 2.

GRACE LEE . . . . . Four Oaks, N. C.

*Grammar*

Poe Society, 1, 2, 3, 4; Association of Childhood Education, 2, 3; W. A. A., 1, 2.

CATHRINE LEWIS . . . . . Faison, N. C.

*Home Economics and Social Science*

MARGARET OVERTON LEWIS . . . Turkey, N. C.

*Home Economics and Science*

Chi Pi Players, 1, 2, 3, 4; "Double Door," 2; Historian, 2; Home Economics Club, 1; Poe Society, 1, 2, 3, 4; Marshal, 2, 3, 4; *Teco Echo*, 2, 3, 4, Associate Editor, 4; Co-Editor *Pieces O' Eight*, 4; Student Cooperative Council, 4; House Council, 4; Y. W. C. A., 3; TEGAN, 4; Young Democrat Club, 2, 3; Publications Board, 4.



Margaret Liles  
Ellen Carlton Maddrey

Janice Lister  
Lona Maddrey

Evelyn Lyon  
Bobbie Lou Martin

Anne Mabry  
Elnora Louise Mason

# SENIORS

MARGARET LILES . . . . . Lilesville, N. C.  
*Commerce and English*

Brevard College, 1; Commerce Club, 2, 3, 4.

JANICE LISTER . . . . . Elizabeth City, N. C.  
*English and French*

Lanier Society, 1, 2, 3, 4; English Club, 3, 4; Sigma Pi Alpha, 3, 4.

EVELYN LYON . . . . . Ayden, N. C.  
*Primary*

Association of Childhood Education, 3, 4; Y. W. C. A., 4; Lanier Society, 4.

ANNE MABRY . . . . . Norwood, N. C.  
*Primary*

Y. W. C. A., 1, 2, 4; Association of Childhood Education, 4; Young Democrat Club, 2, 3; B. S. U., 2.

ELLEN CARLTON MADDREY . . . . . Seaboard, N. C.  
*Home Economics and Science*

Glee Club, 1, 2, 3; Young Democrat Club, 2, 3; Home Economics Club, 1, 2, 3, 4; Science Club, 1, 2, 3, 4; Associate Editor TECMAN, 2; Circulation Manager *Pieces O' Eight*, 4; Poe Society, 2, 3; Y. W. C. A., 1, 2; Superlative.

LONA MADDREY . . . . . Seaboard, N. C.  
*Grammar*

BOBBIE LOU MARTIN . . . . . Fayetteville, N. C.  
*Home Economics and Social Science*

ELNORA LOUISE MASON . . . . . Atlantic, N. C.  
*Primary*

Louisburg College, 1, 2; Y. W. C. A., 3; Association of Childhood Education, 4; Big Sister, 4.





Myrtle Gray Massengill  
Annie Pearl McDonald

Charlotte Matthews  
Ruth McHan

Hiram Mayo  
Jean McKinnon

Elsie McCain  
Nora Meiggs

# SENIORS

MYRTLE GRAY MASSENGILL . . . Four Oaks, N. C.

*Grammar*

W. C. U. N. C., 1; Y. W. C. A., 2, 3; Vice-President Free  
Will Baptist Student League, 4.

ANNIE PEARL McDONALD, Jackson Springs, N. C.

*Primary*

CHARLOTTE MATTHEWS . . . . . Apex, N. C.

*Home Economics and Science*

RUTH MCHAN . . . . . Winston Salem, N. C.

*Primary*

B. S. U. Council, 1, 2, 3; Y. W. C. A., 1, 2, 3, 4; Association  
of Childhood Education, 2, 3, 4; Choir, 2, 3; *Toro Echo*  
Representative, 4.

HIRAM MAYO . . . . . Mesic, N. C.

*Mathematics and Science*

JEAN MCKINNON . . . . . Mt. Gilead, N. C.

*Home Economics and Science*

ELSIE MCCAIN . . . . . Newport, N. C.

*Home Economics and Social Science*

Peace College, 1; Home Economics Club, 3, 4.

NORA MEIGGS . . . . . Camden, N. C.

*Primary*



Doris Moore  
Florine Morris

Lorraine Morrill Moore  
Marguerite Moye

Mary Sue Moore  
Gladys Munford

Esther Morgan  
Frances Elizabeth Newby

# SENIORS

DORIS MOORE . . . . . Spring Hope, N. C.

*Grammar*

Y. W. C. A., 2; B. S. U., 3, 4; Association of Childhood Education, 4; Student Council, 3.

LORRAINE MORRILL MOORE . . . Falkland, N. C.

*Primary*

Emerson Society, 2, 3, 4; Young Democrat Club, 1, 2, 3; Y. W. C. A., 1.

MARY SUE MOORE . . . . . Greenville, N. C.

*Home Economics and Social Science*

*Toro Echo*, 1, 2, 3, Associate Editor, 2, Fashion Editor, 3; Chi Psi, 1, 2, 3; Costume Mistress, 2, 3; Alumni Daughters and Sons, 2, 3; Home Economics Club, 3; W. A. A., 3; Campus Representative on College Board of *Madenoiselle*; Senior Superlative.

ESTHER MORGAN . . . . . Lillington, N. C.

*Primary*

W. A. A., 1, 2, 3; Lanier Society, 2, 3, 4; Y. W. C. A., 1; Association of Childhood Education, 4.

FLORINE MORRIS . . . . . Atlantic, N. C.

*English and History*

Duke University, 1, 2; Lanier Society, 3, 4; English Club, 3, 4.

MARGUERITE MOYE . . . . . Snow Hill, N. C.

*Primary*

GLADYS MUNFORD . . . . . Kenly, N. C.

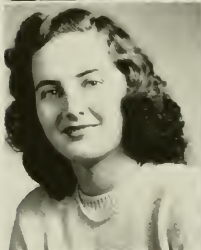
*Home Economics and Social Science*

Chief Marshal, 4; Y. W. C. A., 3, 4; Lanier Society Marshal, 4; Home Economics Club, 1, 2, 3, 4; Lanier Society, 4.

FRANCES ELIZABETH NEWBY . . . Hertford, N. C.

*Home Economics and Social Science*

Home Economics Club, 2, 3; Y. W. C. A., 1, 2; Y. D. C., 1, 2; Social Committee, 1, 2, 3; Proctor, 3; Emerson Society, 1, 2; Alpha Sigma, 4; House Council, 4.



Blonnie Odum  
Sue Parker

Jewel Orr  
Cassie Parnell

Dave Owens  
Dorothy Pearsall

Mary John Parker  
Annie Sue Perry

# SENIORS

BLONNIE ODUM . . . . . Swansboro, N. C.

*Primary*

Association of Childhood Education, 2, 4; W. A. A., 2, 3;  
Y. W. C. A., 3; College Choir, 2.

JEWEL ORR . . . . . Willard, N. C.

*Home Economics and Science*

DAVE OWENS . . . . . Pinetops, N. C.

*English and Social Science*

President Class, 3, 4; Chi Pi Players, 2, 3, 4, Co-Stage Manager, 2, 3, Vice-President, 3, Co-Publicity Manager, 2; Co-Stage Manager of "Martha," 3; Y. M. C. A., 1, 2, 3, 4, Publicity Chairman, 2; Senior Play, 2, 3, 4; *Pieces O' Eight*; Co-Stage Manager Senior Play, 2, 4; English Club, 2, 3; Basketball, 2, 3, 4; Football, 2, 3; Phi Sigma Pi Fraternity, 4; A Cappella Choir, 2; State Contest Play, 2; Young Democrat Club, 2, 3; Who's Who in American Universities and Colleges; Senior Superlative.

MARY JOHN PARKER . . . . . Clinton, N. C.

*Commerce*

SUE PARKER . . . . . Pollocksville, N. C.

*Home Economics and Social Science*

Home Economics Club, 1, 2, 3, 4, Secretary, 2, Vice-President, 3; Lanier Society, 1, 2, 3, 4; Tri-Dax Representative, 3; I-H Club, 2, 3, 4, Vice-President, 3; W. A. A., 1, 2, 3, 4; Dormitory Head, 2; Head of Volley Ball, 3; House President, 3; Secretary Women's Student Government Association, Summer; Y. W. C. A., 3, 4; Science Club, 2, 3, 4; Big Sister, 2; Senior Superlative; Who's Who Among Students in American Universities and Colleges.

CASSIE PARNELL . . . . . Pikesville, N. C.

*Primary*

DOROTHY PEARSALL . . . . . Wallace, N. C.

*Primary*

Vice-President Class, 4; President P. S. A., 4; House President W. S. G. A., 2; Class Representative W. S. G. A., 3; *Pieces O' Eight*, 2, 3, Associate Editor, 4; Business Staff *Tree Echo*, 3; Y. W. C. A., 4; Young Democrat Club, 1, 2, 3; Association of Childhood Education, 3, 4; Who's Who Among Students in American Universities and Colleges; Senior Superlative.

ANNIE SUE PERRY . . . . . Merry Hill, N. C.

*Commerce and English*





Rebecca Anne Perry  
Edna Powell

Annie Moore Piner  
Frances Jean Ratcliff

Christine Pleasant  
Nell Brandon Reavis

Edna Louise Powell  
Sarah Helen Register

# SENIORS

REBECCA ANNE PERRY . . . . . Louisburg, N. C.  
*Grammar*

Y. W. C. A., 2, 3, 4; W. A. A., 4; Future Teachers of America, 3, 4; President, 4; Student Cooperative Council, 4; B. S. U. Council, 4.

ANNIE MOORE PINER . . . . . Marshallburg, N. C.  
*Primary*

CHRISTINE PLEASANT . . . . . Angier, N. C.  
*Home Economics and Science*

EDNA LOUISE POWELL . . . . . Enfield, N. C.  
*Primary*  
Association of Childhood Education, 4; B. S. U., 4.

EDNA POWELL . . . . . Smithfield, N. C.  
*Home Economics and Science*

FRANCES JEAN RATCLIFF . . . . . Pantego, N. C.  
*Home Economics and Social Science*

Poe Society, 1, 2, 3, 4; Senior Y. W. C. A., Cabinet, 3; Publicity Chairman, 3; M. S. A. Cabinet, 3; Home Economics Club, 1, 2, 3, 4; Publicity Chairman, 3; Poster Bureau, 4.

NELL BRANDON REAVIS . . . . . Yadkinville, N. C.  
*Home Economics and Science*

SARAH HELEN REGISTER . . . . . Wilmington, N. C.  
*Primary*

Y. W. C. A., 1, 2, 3; Association of Childhood Education, 1, 2, 4.



Viola Register  
Grace Roberson

Margarette Ricks  
Maribelle Robertson

Elizabeth Roberts  
Mary Ann Rogers

Frances Roberts  
Mrs. Helen Thomas Rollins

# SENIORS

VIOLA REGISTER . . . . . Ft. Barnwell, N. C.

## Grammar

Young Democrat Club, 1; Y. W. C. A., 1; Emerson Society, 1; Future Teachers of America, 1, 2, 3, 4, Treasurer, 2; Secretary, 3; Big Sister, 3.

MARGARETTE RICKS . . . . . Selma, N. C.

## Home Economics and Social Science

Pineland Junior College, 1, 2; Y. W. C. A., 3, 4; Home Economics Club, 3, 4, Treasurer, Summer, 3; International Relations Club, 3, 4; 4-H Club, 3, 4, Reporter, 1; Lanier Society, 4; House Council, 4; Class Treasurer, 4; B. S. T. Council, 4; Student-Faculty Committee, 1.

ELIZABETH ROBERTS . . . . . Willow Springs, N. C.

## Home Economics and Science

FRANCES ROBERTS . . . . . Yanceyville, N. C.

## Home Economics and Social Science

GRACE ROBERSON . . . . . Robersonville, N. C.

## Primary

Young Democrat Club, 1; Glee Club, 2; W. A. A., 2; Emerson Society, 2, 3; Lanier Society, 1; Association of Childhood Education, 1; Y. W. C. A., 1; Big Sister, 4.

MARIBELLE ROBERTSON . . . . . Greenville, N. C.

## English and Commerce

Y. D. C., 1, 2; Glee Club, 1, 2, 3; Band, 1, 2, 3; Orchestra, 1, 2; English Club, 1, 2, 3, 4; Commerce Club, 1; Sophomore Class Treasurer; Associate Editor *Toro Echo*, 2, 3; Editor-in-Chief, 1; Alpha Iota, 3, 4; Women's Student Government Association, 3; Editor Handbook, 1943-44; Editor *Pieces O' Eight*, 4; Student Cooperative Council, Secretary, Summer, 3; Student-Faculty Committee, 4; College Marshal, 4; Emerson Society; Pi Omega Pi; Senior Superlative; Who's Who Among Students in American Universities and Colleges.

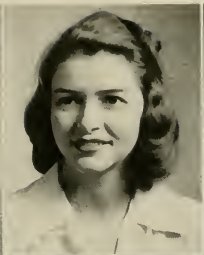
MARY ANN ROGERS . . . . . Fuquay Springs, N. C.

## Home Economics and Science

MRS. HELEN THOMAS ROLLINS . . . . . Corinth, N. C.

## Foreign Language and English

Y. W. C. A., 1, 2, 3; Choir, 1; Poe Society, 1, 2, 3; Marshal, 2; Phi Sigma Fraternity, 1, 2, 3; Trojan Representative, 3.



Alma Rouse  
Dorothy Sasser

Virginia Rouse  
Dorothy Payne Shearin

Marjorie Rowe  
Mary Beth Sheffield

Katherine Russell  
J. C. Shepherd

# SENIORS

ALMA ROUSE . . . . . Kinston, N. C.  
*Grammar*

Poe Society, 2, 3, 4; Big Sister, 3; International Relations Club, 3; Future Teachers of America, 4; Choir, 3.

VIRGINIA ROUSE . . . . . Greenville, N. C.  
*Grammar*

Band, 1, 2; Young Democrat Club, 1, 2; Chi Pi Players, 1, 2; Orchestra, 2; Choir, 2; Chairman House and Grounds Committee, 4; Association of Childhood Education, 4; Poster Bureau, 4.

MARJORIE ROWE . . . . . Ayden, N. C.  
*Commerce and Social Science*

Emerson Society, 2, 3, 4; Y. W. C. A., 1, 2, 3; Zeta Delta Chapter of Alpha Iota, 2, 3; Pi Omega Pi Fraternity, 4; Commerce Club, 1, 2, 3; Budget Committee, 4.

KATHERINE RUSSELL . . . . . Biscoe, N. C.  
*Commerce and English*

Y. W. C. A., 1, 2, 3, 4; Cabinet, 3; Chairman World Fellowship; Commerce Club, 1, 2, 3, 4; Alpha Iota Sorority, 2, 3, 4; Chaplain, 3; Historian, 4; Pi Omega Pi Fraternity, 4; Chi Pi Players, 1, 2; English Club, 1, 2, 3, 4; P. S. A., 1, 2, 3, 4; Cabinet, 2, 3.

DOROTHY SASSER . . . . . Wilmington, N. C.  
*Grammar*

Y. W. C. A., 2, 3, 4; Secretary, 2; Representative to an Inter-Racial Conference of the Y. W. C. A., 2; House President, 3; B. S. U. Council, 2, 3, 4; Editor *Key*, 3; Lanier Society, 2, 3; Choir, 1, 2; Glee Club, 3, 4; "Martha"; Chairman Social Committee, 4; College Marshal, 4; Who's Who Among Students in American Universities and Colleges.

DOROTHY PAYNE SHEARIN . . . . . Warrenton, N. C.  
*Mathematics and Physical Education*

Mathematics Club, 1, 2, 3, 4; Y. W. C. A., 1, 2, 3; Junior "Y" Cabinet, 1; W. A. A., 1, 2, 3, 4; Softball, Varsity, 1, 2, 3; Field Hockey, Varsity, 2, 3; Soccer, Varsity, 2, 3; Head of Soccer, 2; Treasurer Women's Student Government, 2; House President, 3, 4; Assistant Head Basketball, 4; Young Democrat Club, 1.

MARY BETH SHEFFIELD . . . . . Roschill, N. C.  
*French and English*

Meredith College, 1; English Club, 3, 4.

J. C. SHEPHERD . . . . . Lexington, N. C.  
*Mathematics and Science*

Appalachian State Teachers' College, 1; Y. M. C. A., 2, 3, 4; Cabinet, 2; Treasurer, 3; President, 4; Mathematics Club, 2, 4; Vice-President, 3; Phi Sigma Pi, 3; Historian, 4; Men's Student Government Association, 3; Student Cooperative Council, 4; Constitution Committee, 3; House President, Summer, 3; Committee on Study Conditions in the Dormitory, 3, 4; Easter Pageant, 2; Senior Supperlative, 4; Who's Who Among Students in American Universities and Colleges.



Alma E. Simmons  
Eris Stallings

Martha Spence  
Annie Audrey Stevenson

Ruth Spencer  
Helen Marie Stone

Betty Lee Spruill  
Alice Stovall

# SENIORS

ALMA E. SIMMONS . . . . . Greenville, N. C.  
*English and French*

Y. W. C. A., 1, 2, 3; Young Democrat Club, 1, 2; Lanier Society, 2, 3; Sigma Phi Alpha, 1, 2, 3; English Club, 1, 2, 3; Treasurer, 3; M. S. A., 1, 2, 3; Chairman World Friendship, 3.

MARTHA SPENCE . . . . . Fuquay Springs, N. C.  
*Primary*

RUTH SPENCER . . . . . Washington, N. C.  
*Commerce and Physical Education*

BETTY LEE SPRUILL . . . . . Greenville, N. C.  
*Home Economics and Science*

Peace Junior College, 1, 2; Home Economics Club; Science Club; Presbyterian Christian Association.

ERIS STALLINGS . . . . . Jamesville, N. C.  
*Home Economics and Social Science*

ANNIE AUDREY STEVENSON . . . . . Palmyra, N. C.  
*Primary*

M. S. A., 1, 2, 3, 4; Y. W. C. A., 1, 2, 3, 4, Cabinet, 3; Home Economics Club, 2, 3, 4; Science Club, 2, 3, 4, President, 1; House Committee, 4.

HELEN MARIE STONE . . . . . Reidsville, N. C.  
*Grammar*

Y. W. C. A., 1, 2, 3, 4, Treasurer, 3, President, 4; Future Teachers of America, 2, 3, 4, President, 3; Student Cooperative Council, 4; Interfaith Council, 4; M. S. A., 1, 2, 3, 4; Program Committee, 2; Senior Superlative; Who's Who Among Students in American Universities and Colleges.

ALICE STOVALL . . . . . Stovall, N. C.  
*Home Economics and Science*



Jean Strickland  
Frances Belle Tunstall

Geraldine Taylor  
Ruby Wanda Tyndall

Grace Taylor  
Jane Underwood Vann

Sue Murray Thomas  
Linda Vann

# SENIORS

JEAN STRICKLAND . . . . . Fayetteville, N. C.  
*Primary Education*

Louisburg College, 1; E. C. T. C., 2, 3, 4; Band, 2, 3, 4; Orchestra, 3; A Cappella Choir, 3; Woman's Chorus, 2; Mixed Chorus, 1.

GERALDINE TAYLOR . . . . . Greenville, N. C.  
*English and Commerce*

Alpha Iota, 2, 3, Secretary, 3; Vice-President, 2; Pi Omega Pi, 4, President, 4; Young Democrat Club, 1; Commerce Club, 1, 2, 3, 4; *Teco Echo* Representative, 1; English Club, 3.

GRACE TAYLOR . . . . . Jacksonville, N. C.  
*Grammar*

Association of Childhood Education, 1, 2, 3; B. S. U. Council, 3; Y. W. A., 3; Chi Pi Players, 1; Y. W. C. A., 1; W. A. A., 3; Jarvis Forensic Club, 3.

SUE MURRAY THOMAS . . . . . Beaufort, N. C.  
*Primary*

FRANCES BELLE TUNSTALL . . . . . Greenville, N. C.  
*Mathematics and Business Education*

Women's Judiciary, 4; Day Student Committee, 4; President Day Student Committee, 4; Alpha Iota Sorority, 3; Marshal Alpha Iota Sorority, 3; Pi Omega Pi, 4; Y. W. C. A., 4; Commerce Club, 2, 3, 4, Vice-President, 3; Mathematics Club, 1, 2, 3, 4; *Tecum* Representative, 2; M. S. A., 1, 2, 3, 4, Secretary, 2; Day Student Representative, 3; Second Vice-President, 4; Young Democrat Club, 1, 2, 3.

RUBY WANDA TYNDALL . . . . . Pink Hill, N. C.  
*Music and French*

W. C. U. N. C., Summer, 3; Delegate to Methodist Student Conference, 1; U. N. C., 2; Duke University, 3; M. S. A., 1, 2, 3, 4; Y. W. C. A., 1, 2; Poe Society, 3, 4; Band, 2, 4; Choir, 1, 2, 3; Secretary Music Department, 3, 4; Young Democrat Club, 2; College Dance Band, 4.

JANE UNDERWOOD VANN . . . . . Clinton, N. C.  
*Commerce and Science*

Alpha Iota Sorority, 2, 3, 4; Commerce Club, 1, 2, 3; Pi Omega Pi Fraternity, 1; Science Club, 1; W. A. A., 2, 3, 4; Y. W. C. A., 1, 3; Emerson Society, 1, 2, 3, 4; Marshal, 3; *Teco Echo*, 2; Vice-President W. S. G. A., 3; Chairman Women's Judiciary, 4; Editor Handlook, 3; Delegate to S. I. A. S. G., 3; Senior Play, 3; Senior Superlative; Who's Who Among Students in American Universities and Colleges.

LINDA VANN . . . . . Ayden, N. C.  
*Primary*

Lanier Society, 2, 4; Y. W. C. A., 4; Association of Childhood Education, 3, 4.





Ernestine Vinson  
Gretchen Webster

Anne Ward  
Doris Wells

Gwendolyn Ward  
Elizabeth Batten Wells

Mabel Spence Watson  
Mildred White

# SENIORS

ERNESTINE VINSON . . . Woodland, N. C.

*Grammar*

Y. W. C. A., 3, 4; Lanier Society, 2, 3, 4; W. A. A., 1, 2, 3, 4, Cabinet, 3; Young Democrat Club, 1, 2; Alumni Daughters and Sons, 3, 4.

ANNE WARD . . . Whitakers, N. C.

*Primary*

Lanier Society, 1, 2, 3, 4; W. A. A., 1, 2; Association of Childhood Education, 1, 2, 4; Student Cooperative Council, 4; Vice-President Wilson Hall, 4; Y. W. C. A., 1, 2, 4.

GWENDOLYN WARD . . . Merry Hill, N. C.

*Mathematics and Science*

MABEL SPENCE WATSON . . . Fremont, N. C.

*Grammar*

Y. W. C. A., 1, 2, 3, 4, Cabinet, 3, 4; M. S. A., 1, 2, 3, 4, Cabinet, 2; Association of Childhood Education, 2; Future Teachers of America, 3; Vice-President, 3, State Secretary, 4; Senior Superlative; Who's Who Among Student in American Universities and Colleges.

GRETCHEN WEBSTER . . . Leasburg, N. C.

*Home Economics and Science*

Laoler Society, 1, 2, 3, 4, Treasurer, 3; President, 4; Young Democrat Club, 1, 2, 3, Treasurer, 3; Delegate to State Student Legislature, 3; *Teco Echo*, 2, 3; 4-H Club, 3; A Cappella Choir, 1, 2, 3; Chi Pi Players, 2, 3, 4; Home Economics Club, 1, 2, 3, 4; Science Club, 1, 2, 3, 4; Y. W. C. A., 2, 3; Big Sister, 3; Hall Proctor, 3; W. A. A., 2, 3; Student Cooperative Council, 4; Who's Who Among Students in American Universities and Colleges; "Jane Eyre," 4.

DORIS WELLS . . . Rocky Mount, N. C.

*Commerce and English*

ELIZABETH BATTEN WELLS . . . Salem, N. C.

*Home Economics and Social Science*

Fineland Junior College, 1; Home Economics Club, 2, 3, 4; Science Club, 2; Choir, 2, 4; B. S. U. Council, 2, 3, 4.

MILDRED WHITE . . . Hertford, N. C.

*Grammar*

Poe Society, 2, 3, 4; Y. W. C. A., 2, 3; Y. D. C., 3; Future Teachers of America, 3, 4, Vice-President, 4.



Ruby White  
Edith Wilkerson

Patsy Whitehurst  
Ada Willey

Dorothy Whitley  
Doris Williams

Matilda Whitley  
Hazel Williford

# SENIORS

RUBY WHITE . . . . . Aurora, N. C.  
*Grammar*

EDITH WILKERSON . . . . . Bailey, N. C.  
*Home Economics and Social Science*

PATSY WHITEHURST . . . . . Greenville, N. C.  
*Home Economics and Science*

ADA WILLEY . . . . . Gates, N. C.  
*Home Economics and Science*

DOROTHY WHITLEY . . . . . Smithfield, N. C.  
*Primary*

DORIS WILLIAMS . . . . . Kinston, N. C.  
*Commerce and Social Science*

B. S. U. Council, 2, 3, 4; Sunday School Representative, 2, First Vice-President, 3, Music Chairman, 4; N. C. State B. S. U. Secretary-Treasurer, 3; Association of Childhood Education, 1, 2, 3, 4, Vice-President, 3; Glee Club, 2, 3, 4; Y. W. C. A., 1, 2, 3, 4; Young Democrat Club, 1; Lanier Society 2, 3; Student Cooperative Council, 4; Senior Superlative: Who's Who Among Students in American Universities and Colleges.

Commerce Club, 1, 2, 3, 4, Treasurer, 2, Secretary, 3; Emerson Society, 3, 4; TYCOAN Representative, 4; Choir, 1, 2; Young Democrat Club, 1, 2.

MATILDA WHITLEY . . . . . Smithfield, N. C.  
*Home Economics and Science*

HAZEL WILLIFORD . . . . . Greenville, N. C.  
*English and History*

Lanier Society, 1, 2, 3, 4; Chairman of Intersociety Committee, 4; Young Democrat Club, 1; Chi Pi Players, 1, 2, 3, 4, Treasurer, 3; "On the Bridge at Midnight," 2; International Relations Club, 3, 4; English Club, 1, 2, 3, 4; Alumni Sons and Daughters, 1, 2, 3, 4, Vice-President, 3; President, 4; Choir, 1, 2; Band, 1; Student Cooperative Council, 4.



Jessie Mary Willson



Dorothy Wilson



Oleta Wood



Nancy Wynne

# SENIORS

JESSIE MARY WILLSON . . . . Roxboro, N. C.

*Home Economics and Science*

Louisburg College, 1, 2; Glee Club, 3, 4; Home Economics Club, 3, 4; Y. W. C. A., 4.

DOROTHY WILSON . . . . Grimesland, N. C.

*Home Economics and Social Science*

OLETA WOOD . . . . Swansboro, N. C.

*Home Economics and Social Science*

NANCY WYNNE . . . . Bethel, N. C.

*Grammar*

W. A. A., 1, 2, 3, 4; Basketball, Varsity, 2, 3; *Two Echo* Reporter, 4; *Lanier Society*, 1, 2; Young Democrat Club, 1; Varsity Club Sweetheart, 3; Y. W. C. A., 1, 2; House President, Summer, 3; Senior Superlative; Cheerleader, 4.





# WHO'S WHO AMONG STUDENTS IN



LILLIAN BOYETTE  
ROSALIE BROWN  
DOROTHY RAE DAVIS  
MARGIE DUDLEY  
HELEN FLYNN

CHRISTINE HELLEN  
DORIS HOCKADAY  
CAROL LEIGH HUMPHRIES  
DAVE OWENS  
SUE PARKER

# AMERICAN UNIVERSITIES and COLLEGES



DOROTHY PEARSALL

MARIBELLE ROBERTSON

DOROTHY SASSER

J. C. SHEPHERD

BURCHIE SMITH JOHNSON

HELFN STONE

JANE VANN

MABEL SPENCE WATSON

GRETCHEN WEBSTER

DOROTHY WHITLEY

# SENIOR



NANCY WYNNE  
*Most Popular*

MABEL SPENCE WATSON  
*Most Intellectual*

VIRGINIA KNOWLES  
*Most Individual*

J. C. SHEPHERD  
*Most Dependable*

LILLIAN "MICKEY" BOYETTE  
*Best All-Round*

HELEN STONE  
*Most Likely to Succeed*

MARIBELLE ROBERTSON  
*Most Talented*

ANNIE B. BARTHOLOMEW  
*Most Athletic*

VIRGINIA DARE BRITTON  
*Sweetest*

ROSALIE BROWN  
*Most Versatile*

HELEN JAMES  
*Best Dressed*

ELLEN MADDREY  
*Best Dancer*

# SUPERLATIVES



JANE VANN  
*Wittiest*

DOROTHY WHITLEY  
*Best Disposition*

CHRISTINE HELLEN  
*Cutest*

DAVE OWENS  
*Best Leader*

MARY SUE MOORE  
*Most Original*

SUE PARKER  
*Best Disposition*

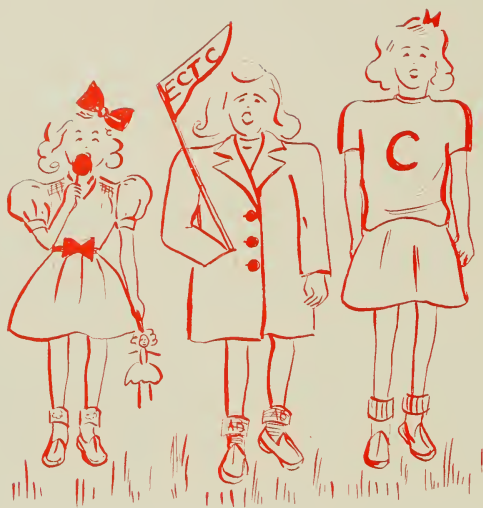
KATHERINE RUSSELL  
*Most Studious*

MILDRED JOHNSON  
*Most Sincere*

DOROTHY PEARSALL  
*Friendliest*

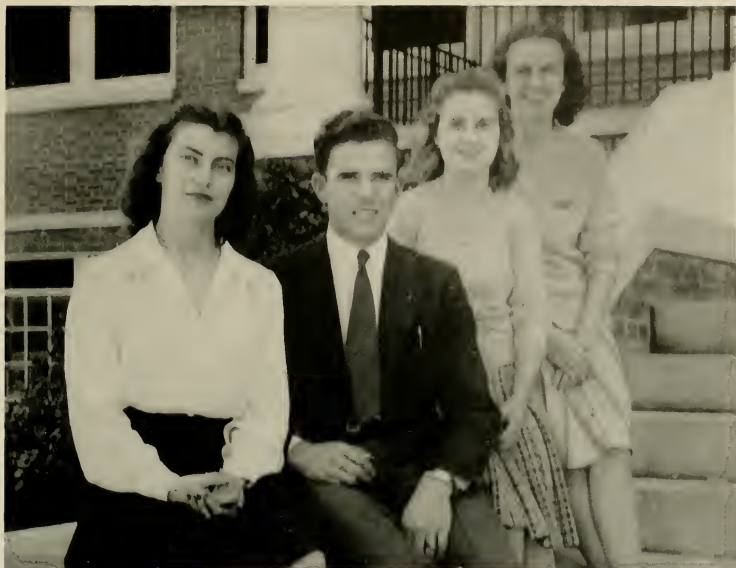
CAROL LEIGH HUMPHRIES  
*Most Capable*

JANE HARDEE  
*Prettiest* Not pictured



JUNIORS





## JUNIOR OFFICERS

VIVIEN YELVERTON . . . . . *President*

STANFIELD JOHNSON . . . . . *Vice-President*

EDITH BROWN . . . . . *Secretary*

PAT EDWARDS . . . . . *Treasurer*

# JUNIORS



*First Row:* MATTIE GRACE ALDERMAN, Parkersburg, N. C.; MARY ELIZABETH AUSTIN, Greenville, N. C.; ELLEN BARNHILL, Greenville, N. C.; BETTY BATSON, Burgaw, N. C.; SYBIL BEAMAN, New Bern, N. C.

*Second Row:* ELLIS BEDSWORTH, Marshallburg, N. C.; WINIFRED BOND, Oriental, N. C.; GRETCHEN BOSWELL, Wilson, N. C.; DOROTHEA BOYETTE, Kenly, N. C.; MARION BRASWELL, Louisburg, N. C.

*Third Row:* CORINE BRITTON, Jackson, N. C.; DORIS VIRGINIA BROCK, Kenansville, N. C.; EDITH BROWN, Magnolia, N. C.; JOHNNIE ELIZABETH BROWN, Greenville, N. C.; MARY BRYAN, La Grange, N. C.

*Fourth Row:* MILLISON BRYANT, Rich Square, N. C.; EDITH BUCK, Kinston, N. C.; SARAH ELLIS BUNN, Zebulon, N. C.; DORIS BUTLER, Clinton, N. C.; EVANGELINE BUTLER, Clinton, N. C.







*First Row:* MARGARET BUTLER, Tabor City, N. C.; ALEENE CADE, Fuquay Springs, N. C.; LOTA CAINE, Fayetteville, N. C.; FRANCES CARTER, Woodland, N. C.; ELIZABETH CATES, Timberlake, N. C.  
*Second Row:* LESLIE CHADWICK, Gloucester, N. C.; IDA FLORINE CLARK, Everetts, N. C.; DORIS COBB, La Grange, N. C.; MARY ALICE COHOON, Columbia, N. C.; SARAH COLLINS, Angier, N. C.  
*Third Row:* VIRGINIA COOKE, Greenville, N. C.; ALICE COPELAND, Ahoskie, N. C.; ELSIE CORBITT, Gatesville, N. C.; BESSIE COUNCIL, Durham, N. C.; JANET COVERT, Portsmouth, Va.  
*Fourth Row:* WILMA COZART, Greenville, N. C.; ELIZABETH CRAWFORD, Pikeville, N. C.; GARNETTE CROCKER, Seaboard, N. C.; SARA CURRIN, Oxford, N. C.; JEAN DAILEY, Shawboro, N. C.



## JUNIORS

# JUNIORS

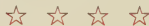


*First Row:* WILLIE MAE DANIELS, Oxford, N. C.; ELIZABETH DARDEN, Hertford, N. C.; ELOISE DAVIS, Fremont, N. C.; EVA DEANES, Murfreesboro, N. C.; FRANCES EAKES, Stokes, N. C.

*Second Row:* SYBIL EAKES, Oxford, N. C.; JESSIE EARP, Holly Springs, N. C.; LUCILLE EDWARDS, Chicod, N. C.; PAT EDWARDS, Hertford, N. C.; SARAH ELLIOT, Erwin, N. C.

*Third Row:* GRACE EVANS, Harrellsville, N. C.; HARRIET EVERETTE, Palmyra, N. C.; GERALDINE FELTON, Colerain, N. C.; MAMIE LEE FISCHER, Vaughan, N. C.; MORRIS FLOW, Louisburg, N. C.

*Fourth Row:* BERNICE FREEMAN, Hickory, N. C.; ANN GILLIAM, Windsor, N. C.; JEAN COURTNEY GOGGIN, Suffolk, Va.; SYLVIA GREENE, Roduco, N. C.; MARIETTA GRIFFIN, Dover, N. C.





*First Row:* JULIA ANN HANCOCK, New Bern, N. C.; JANE HARDY, Rocky Mount, N. C.; HAZEL HARRIS, Fletcher, N. C.; LILLIAN HARRIS, Farmville, N. C.; CATHERINE HESTER, Hurdle Mill, N. C.

*Second Row:* VERNIE HEWETT, Supply, N. C.; LILLIAN HINES, New Bern, N. C.; MARY EDITH HOLLINGSWORTH, La Grange, N. C.; CROSBY YVONNE HONEYCUTT, Roseboro, N. C.; JESSIE MAE HORNE, Pendleton, N. C.

*Third Row:* MILDRED HORNE, Roseboro, N. C.; REBECCA HORTON, Zebulon, N. C.; MARGARET IPOCK, Emul, N. C.; ELIZABETH IVES, New Bern, N. C.; DOROTHY JARVIS, Washington, N. C.

*Fourth Row:* ELIZABETH JENKINS, Aulander, N. C.; CAMILLE JERNIGAN, Aulander, N. C.; CLARINE JOHNSON, Stedman, N. C.; HELEN PAGE JOHNSON, Fairmont, N. C.; MIRIAM JOHNSON, Pendleton, N. C.



## JUNIORS

# JUNIORS



*First Row:* SUE JACKSON JOHNSON, Dunn, N. C.; WILLIAM STANFIELD JOHNSON, Conway, N. C.; LEE MAE JONES, Wendell, N. C.; MILDRED JORDAN, Elm City, N. C.; LOUISE KILGO, Greenville, N. C.

*Second Row:* NANCY KILPATRICK, Hookerton, N. C.; COLLEEN KING, Clinton, N. C.; WORTH LANIER, Chinquapin, N. C.; LOUISE LASSITER, Aulander, N. C.; SYBYLE LEDFORD, Creswell, N. C.

*Third Row:* IRIS LEE, Newton Grove, N. C.; RONALDO LEE, Fuquay Springs, N. C.; ELIZABETH LEWIS, Winnabow, N. C.; FRANCES LEWIS, Knight Isle, N. C.; NELL RACHEL LEWIS, Parton, N. C.

*Fourth Row:* BERTHA MALLARD, Trenton, N. C.; CHRISTINE MANNING, Fountain, N. C.; JANICE MARINE, Burgaw, N. C.; LAURENE MARSHBURN, Clinton, N. C.; ROBERT MARTIN, Rich Square, N. C.







*First Row:* MARJORIE MCBEE, Spruce Pine, N. C.; JEAN McDONALD, St. Pauls, N. C.; ESTHER MCGOUGAN, Tabor City, N. C.; SARAH MCINNIS, Wagram, N. C.; LOIS McLEOD, Carthage, N. C.

*Second Row:* MARGARET McMILLAN, Wade, N. C.; MATTIE McNEILL, Jonesboro, N. C.; MARY LOUIS MERCER, Lumberton, N. C.; HILDA MOORE, Greenville, N. C.; SARAH ANN MOSS, Greenville, N. C.

*Third Row:* NELL FINCH MURPHY, Henderson, N. C.; PEARL OGBURN, Willow Springs, N. C.; MAUDE OVERTON, Ahsokie, N. C.; ZULA PEARSON, Clinton, N. C.; ELEANOR PHILLIPS, Trenton, N. C.

*Fourth Row:* RETHA POPE, Clinton, N. C.; MYRTLE PRICE, New Bern, N. C.; REBECCA PRIDGEN, Elm City, N. C.; MARJORIE PRIVOTT, Edenton, N. C.; NINA REDDITT, Greenville, N. C.



## JUNIORS

# JUNIORS



*First Row:* HELENE STYLES RAMSEY, Burnsville, N. C.; ELIZABETH REGISTER, Clinton, N. C.; ELLEN RIDDICK, Hobbsville, N. C.; SARAH ROBERSON, Spring Hope, N. C.; ALICE ROWELL, Garysburg, N. C.

*Second Row:* REBA SANDERSON, Pink Hill, N. C.; LEONA SASSER, Selma, N. C.; GENEVIEVE SHINE, Arapahoe, N. C.; INEZ SIMMONS, Fairfield, N. C.; MARY ELIZABETH SLATE, Reidsville, N. C.

*Third Row:* JEWEL SLATER, Greenville, N. C.; ETHEL ELIZABETH SMITH, Robersonville, N. C.; LOIS SMITH, Winterville, N. C.; LUCILLE SMITH, Benson, N. C.; LUCY NELL SMITH, Lemon Springs, N. C.

*Fourth Row:* RUBY SMITH, Hertford, N. C.; GLADYS SNELL, Columbia, N. C.; SAM STRICKLAND, Rich Square, N. C.; LOTTIE TEW, Roseboro, N. C.; LORRAINE THOMAS, Red Springs, N. C.





*First Row:* LOUISE TOWE, Skyland, N. C.; IRENE TROTT, Richlands, N. C.; LORRAINE TYNDALL, Kinston, N. C.; AL-  
LENE VAUSE, La Grange, N. C.; FRANCES WALKER, Winston-Salem, N. C.

*Second Row:* GRACE WALKER, Ahoskie, N. C.; LAURA MARIE WALKER, Coinjock, N. C.; BERNICE WHITE, Elizabeth  
City, N. C.; CATHERINE WHITE, Popular Branch, N. C.; ESTHER MAIE WHITE, Belvidere, N. C.

*Third Row:* MARION WHITE, Hertford, N. C.; GRACE WHITEHURST, Conetoe, N. C.; MURIEL WHITEHURST, South  
Mills, N. C.; NORMA WHITFIELD, Hurdle Mills, N. C.; ALICE WIGGINS, Sunbury, N. C.

*Fourth Row:* BEATRICE WILLIAMS, Ayden, N. C.; VERA WILLIAMS, Williamston, N. C.; CATHERINE WILSON, Dunn,  
N. C.; EUNICE WINBON, Fremont, N. C.; MARY WINDLEY, Henderson, N. C.



## JUNIORS

# JUNIORS



*First Row:* PINEAR MAE WINDLEY, Pinetown, N. C.; RUTH WINSLOW, Hertford, N. C.; LUCY WINSTON, Knightdale, N. C.; CHARLOTTE WOMBLE, New Hill, N. C.; LOUVENE WOMBLE, New Hill, N. C.

*Second Row:* HELEN WOOTEN, Goldsboro, N. C.; LOUISE WOOTEN, Greenville, N. C.; MABEL WYNN, Powellsville, N. C.

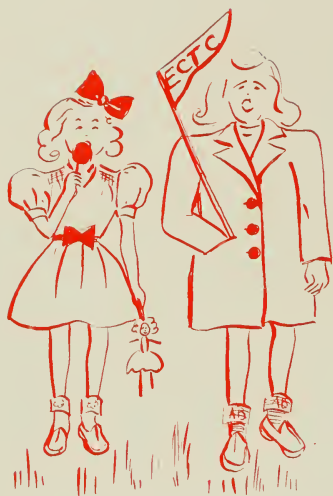
*Third Row:* VIVIAN YELVERTON, Stantonsburg, N. C.







*Snow Scene*  
*Cotton Hall*



# SOPHOMORES



## SOPHOMORE OFFICERS

EVELYN LEWIS . . . . .	<i>President</i>
MARJORIE SMITH . . . . .	<i>Secretary</i>
BERNICE GODLEY . . . . .	<i>Treasurer</i>



DAHLIA ADAMS  
JERRY ALBRITTON  
ADA LOU ALLEN  
SARAH ALLMAN  
PEARL ARNOLD  
JEAN ASBELL

DORIS BAUMRIND  
CORNELIA BEEMS  
ELSIE BIGGS  
MOLLIE BLALOCK  
MARTHA ANNETTE BLAND  
ELEANOR BOOTH

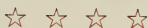
MIRIAM AVERETTE  
DORA O'NEIL BAILEY  
SARAH BALLANCE  
FRANCELLE BARDEN  
MARY BASS  
VIVIAN BASS

HAZEL BRANCH  
BARBARA BREWER  
ELIZABETH BRIDGERS  
DOROTHY BRILEY  
CATHERINE BRINSON  
MARY ANNA BROWN



## SOPHOMORES

# SOPHOMORES



MARY RUTH BROWN  
CATHERINE BURNETTE  
CURTIS BUTLER  
LILLIAN CALLIS  
ANNIE MAY CANNON  
JESSIE CARTER

FRANCES CONGLETON  
CLIFTON CRANDALL  
DELTON CREECH  
DOROTHY JEAN CREECH  
ELIZABETH CURRIN  
BEVERLY CUTLER

FAY CASE  
MARY ALICE CHARLTON  
ERNEST CHESNON  
ELEANOR CHESTNUTT  
HARRIET CHESTNUTT  
MARY LOUISE COBB

CAROLYN DANIELS  
RICHARD DAVID  
GLADYS DAVIS  
RITA DELL DAWSON  
GRACE DICKENS  
ALLIE MITCHELL DILDAY



FRANCES DODSON  
LOUISE DOUGHTIE  
JEAN DOUGLAS  
RACHEL EAKINS  
ANNIE LEE EASON  
MYRA LEE EDMUNDSON

JANICE FAIRLESS  
FRANCES FINCH  
DORIS FRANCK  
SARA FRANCK  
EDWARD GARRIS  
ELLA GATES

BETTIE GRAY ELDRIDGE  
CHARLOTTE VANCE ELLIOTT  
MARY FRANCES ELLIS  
ISABELLE ELLIOT  
AMANDA ETHRIDGE  
JOSEPHINE EVERETTE

JOSEPHINE GIBSON  
BERNICE GODLEY  
ANNA GWYNNE  
HERBERT NORFLEET HARDY  
FRANCES HARRELL  
CAROLYN HASSELL



## SOPHOMORES



# SOPHOMORES



PAULINE HIGGINS  
ERMA HINNANT  
MATTIE BROWN HINSON  
RUTH HINSON  
MARIE HINTON  
HARRIET HOLLOMAN

EVELYN JENKINS  
HOLLIS JERNIGAN  
HELEN JOHNSON  
JOHN JOHNSON  
WILMA JOHNSON  
MARGARET JOHNSTON

ISABELLE HUMPHREY  
LUCILLE HUSKETT  
KENNETH JAMES  
VIRGINIA JEANETTE  
MARTHA JEFFERSON  
ELOISE JENKINS

DONEY JONES  
KATY LOU JONES  
SARAH JONES  
MARY BLAINE JUSTICE  
ILMAR KEARNEY  
WILMA KEARNEY





VIRGINIA KEEL  
LOUISE KEITH  
SUDIE MAE KIRKMAN  
LUCY LANCASTER  
JOSEPH LASSITER  
EVELYN LEWIS

FAYE MIDYETTE  
DORIS MAE MITCHELL  
EUNICE MODLIN  
SARA MOORE  
ELIZABETH MORGAN  
ROBERT MORGAN

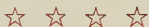
NANNIE LOU LITTLE  
CATHERINE LONG  
BEULAH MANNING  
CHARLOTTE MASON  
LULA JEAN MATTHEWS  
VELMA MEIGGS

DORLIS MORRIS  
MARTHA MOSELEY  
AUDREY MOZINGO  
KATHLYN McDANIEL  
MARGARET MCGILL  
QUEENIE MCGOWAN



## SOPHOMORES

# SOPHOMORES

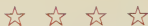


SARAH MCKENZIE  
MARGARET NUNN  
LUCILLE OAKES  
BLANCHE OGBURN  
KATIE EARLE OWEN  
BARBARA PARKER

LEAH MILDRED ROSS  
PAULA ROSS  
JEAN SCARBOROUGH  
ELGIA SCOTT  
MARY FRANCES SLACK  
VIRGINIA SMALL

MARY LYON PEEDIN  
MARGARET PERSON  
ELNA POWELL  
KATHERINE QUICK  
DOROTHY READE  
RACHEL ROBINSON

BETTIE SMITH  
EDNA PEARL SMITH  
MARGIE SMITH  
JEANETTE SMITH  
MRS. STELLA GRAY H. SMITH  
JANE SMITH



MARJORIE SMITH  
DORIS SPARKS  
VIOLET SPARKS  
KATHERINE SPRINKLE  
GRETCHEN STATON  
MARY FRANCES STEPHENSON

FRANCES TEMPLE  
ELIZABETH THOMAS  
ALTA MAE THOMPSON  
ANNE THOMPSON  
MARGARET L. THOMPSON  
JANE TUCKER

DORIS STEVENS  
DIXIE SUGG  
DORIS SUTTON  
LEYTA TAYLOR  
ROSALIE TAYLOR  
ELIZABETH TEMPLE

HELEN TYNDALL  
BETTY SUE TYSON  
MARY LEE VENTERS  
JAMES H. WARREN  
MARY WARREN  
MILDRED WELLONS



## SOPHOMORES

# SOPHOMORES



ELSIE WEST  
LOUISE WHITE  
MARIE WHITEHURST

NELL WHITEHURST  
GRACE WILKINS  
EVELYN WILLIAMS

MARGARET WILLIAMS  
SARA WILLSON

CHARLOTTE WOMBLE  
IRIS WOODY

GERTRUDE WOOLARD

CHRISTINE YARBOROUGH

EVELYN ZIMMERMAN



FRESHMEN

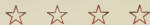


## FRESHMAN OFFICERS

DOROTHY PEBBLES . . . . . *President*  
 TOM ROWLETTE . . . . . *Vice-President*  
 CATHERINE WHITE . . . . . *Secretary*  
 MARY CAMERON DIXON . . . . . *Treasurer*



# FRESHMEN



## *First Row:*

Katherine Abernethy  
Margaret Albritton  
Ann Atkinson  
Nelda Atkinson  
Rena Averett  
Wildred Ward Ayers  
Ruth Baker

## *Third Row:*

Ruth Beddard  
Evelyn Belanza  
Hazel Belche  
Jean Bennett  
Hubert Bergeron  
Dorothy Bethune  
Naomi Blanchard

## *Second Row:*

Mrs. Mary Belle Ballentine  
Frances Banks  
Anne Barwick  
Frances L. Basinger  
Helen Bason  
Gladys Baucom  
Ann Beasley

## *Fourth Row:*

Ruth Blanchard  
Sarah Lee Bland  
Frances Blount  
Rhoda Mae Bone  
Glorence Bonner  
Billie Nelson Borden  
Elizabeth Boswell



# FRESHMEN



## *First Row:*

Betsy Bowers  
Myra Boyce  
Fenner Boyd, Jr.  
Ruth Boykin  
June Brandenburg  
J. L. Brandt  
Jessie Braxton

## *Third Row:*

Julia Ruth Brown  
Viola Brown  
A. Sidney Bunn  
Gloria Butler  
Margaret Iris Butler  
Dorothy Byrd  
Ann Cates

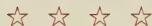
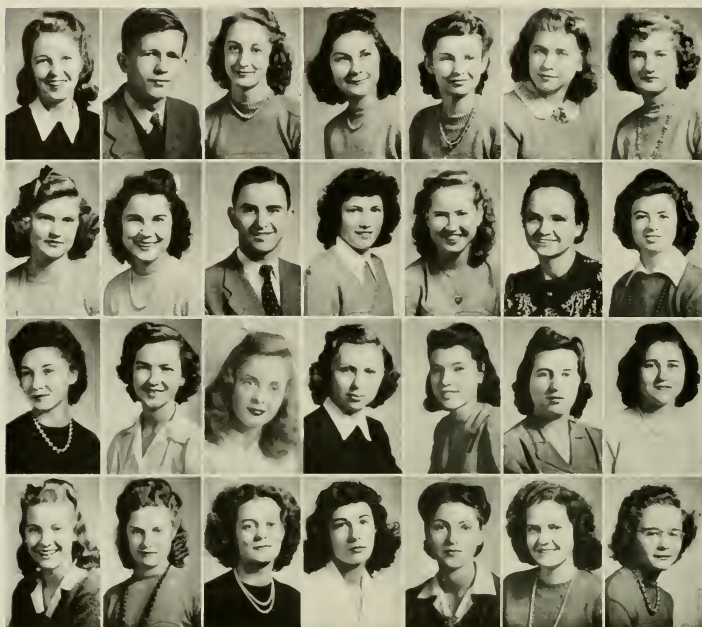
## *Second Row:*

Edith Briley  
Jean Brinkley  
Sallie Britt  
Rachel Brooks  
Ben Brown  
Dorothy Brown  
Jean Brown

## *Fourth Row:*

Eloise Chadwick  
Lois Webb Chadwick  
Jean Chaplin  
Frances Chapman  
Catherine Charles  
John Charlton  
Rebecca Cherry

# FRESHMEN



## *First Row:*

Margaret Chestnut  
Amos Clark  
Margaret Coates  
Johnsie Collins  
Henrietta Cooper  
Mildred Cordes  
Jane Cox

## *Third Row:*

Grace Davis  
Lorraine Davis  
Jacqueline De Lysle  
Susie Denning  
Catherine Dexter  
Geraldine Dickerson  
Thelma Dilday

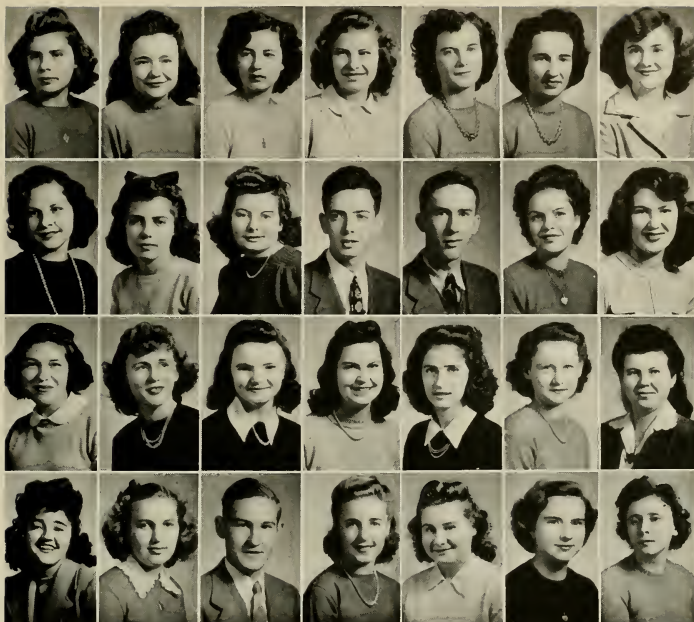
## *Second Row:*

Clara Crabtree  
Nellie Ruth Crawford  
Keith Cummings  
Helen Darden  
Eva Mae Davenport  
Florence Davenport  
Kathryn Davenport

## *Fourth Row:*

Mary Cameron Dixon  
Ada Grey Draughan  
Anna Page Duke  
Harriet Dula  
Myree Dunn  
Bettie Eakes  
Foy Eakes

# FRESHMEN



## *First Row:*

Sarah Lois Eakins  
Aldine Early  
Gilmer Edgerton  
Bertha Edmundson  
Edith Tull Edwards  
Louise Edwards  
Mary Gaskins Edwards

## *Third Row:*

Evelyn Foley  
Elaine Forrest  
Joyce Forrest  
Frances Gaddy  
Melba Garner  
Emma Lee Garriss  
Julia Gee

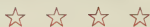
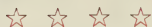
## *Second Row:*

Opal Ray Eldridge  
Jean Evans  
Myrtle Ewell  
James Oscar Felton, Jr.  
Leon Fleming, Jr.  
Kathleen Floyd  
Dorothy Flye

## *Fourth Row:*

Ernestine Grady  
Lena Evelyn Grant  
Alton Gray  
Emily Rebecca Gray  
Emily Greene  
Jayne Griffin  
Vera Griffin

# FRESHMEN



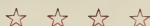
*First Row:*  
 William Griffin  
 Hilda Grimes  
 Margaret Hall  
 Ann Hardee  
 Elizabeth Hardee  
 Lucille Harden  
 Hazel Hardison

*Second Row:*  
 Jean Harrelson  
 Henry W. Harris  
 Nancy Harris  
 Winsome Hart  
 Annie Doris Heath  
 Martha F. Helms  
 Maxine Henderson

*Third Row:*  
 Nora Lee Hinnant  
 Edna L. Hodges  
 Dorothy Hoffer  
 Nancy Holloman  
 Peggy Hopkins  
 Louise Howard  
 Edna Gray Hughes

*Fourth Row:*  
 Hannah Ruth Humbles  
 Elsie Gray Hunt  
 Marion Hurley  
 Annabelle Jackson  
 Margie Jackson  
 Ellen Faye Jessup  
 Annie Belle Johnson

# FRESHMEN



## *First Row:*

Annie Blanche Johnson  
Grace Johnson  
Sally Margaret Johnston  
Dorothy Jones  
Helen Jones  
Lois Jones  
Margaret I. Jones

## *Third Row:*

Mary Ellen Knotts  
Wanda Lamm  
Rosa Alice Lancaster  
Ruth Langden  
Alta Lawson  
Alta White Lee  
Doris Lee

## *Second Row:*

Lillian Joyner  
Leona Keene  
Helen Kemp  
Colleen D. King  
Betty Joyce Kinlaw  
Hazel Kirby  
Rebecca Kirkland

## *Fourth Row:*

Morrison Leggett  
Frances Lewis  
Dorothy Little  
Mamie Lee Little  
Sadie Little  
Beatrice Waddell Long  
Blanche Majette



# FRESHMEN



## *First Row:*

Lura Delle Mallard  
Kay Mann  
Elizabeth Manning  
Georgia Mason  
Ann Massey  
Helen Matthews  
Julian Matthews

## *Third Row:*

Amelia Monroe  
Edith Moore  
Elizabeth Moore  
Frances Moore  
Kathryn Morris  
Blanie Moye  
Edna Munford

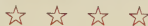
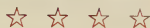
## *Second Row:*

Cornelia Mattocks  
Audrey May  
Inez McCaskill  
Margaret Jane McGowen  
Nell McQueen  
Ruth Mewbern  
Bonnie Jane Minton

## *Fourth Row:*

Hilda Mae Murphy  
Stella V. Murray  
Mary Alice Muth  
Janice Myers  
Clifton Nelson  
Douglas Nelson  
Mary Kathryn Nelson

# FRESHMEN



## *First Row:*

Margaret Newbern  
Vashti Newman  
Tillie Norris  
Peggy Nye  
Christine Oates  
Ruth Ogburn  
Leta Olive

## *Third Row:*

Hazel Piland  
Edna Earle Poole  
Helen Fay Porter  
Jewell E. Porter  
Annette Pridgen  
Foye Leigh Pritchard  
Doris Proctor

## *Second Row:*

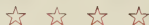
Nell Overton  
Eloise Page  
Frances Page  
Anne Miller Parker  
Helen Patterson  
Dorothy Peebles  
Annie Phillips

## *Fourth Row:*

Louise Pullen  
Hilda Pulley  
Bratha Reagan  
Marybelle Redditt  
Carolyn Register  
Jean Robeson  
Heman Robinson



# FRESHMEN



## *First Row:*

Allie Proctor Roebuck  
Marion Rogerson  
Helen Roper  
Helen Rouse  
Jean Rouse  
Alba Rowland  
Margaret Rumley

## *Third Row:*

Ann Shearin  
Margaret Shields  
Mildred Simmons  
Pattie Simmons  
Elizabeth Simpkins  
Vivian Sitterson  
Delia Slater

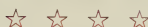
## *Second Row:*

Pearl Saiced  
Faye Sanders  
Frances Sawyer  
Ruby Lee Scott  
Helen Ruth Sessoms  
Anne Cole Sewell  
Edna Sharpe

## *Fourth Row:*

Marion Smith  
Mary Frances Smith  
Mary Penny Smith  
Helen Spruill  
Vista Grey Stephens  
Martha Strawn  
Hazel Strickland

# FRESHMEN



## *First Row:*

Marjorie Sugg  
Mozelle Suitt  
Alice Sumrell  
Darens Sumrell  
Alice Ruth Sutton  
Lita Grey Swindell  
Mary Elizabeth Taylor

## *Third Row:*

Elizabeth Trippe  
William Tucker  
Alta Earle Tyson  
Sarah Elizabeth Upchurch  
Lola Vaughan  
Leslie Venters  
Ruth Vincent

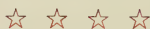
## *Second Row:*

Pauline Taylor  
Lucille Tharrington  
Jennie Thomas  
Watona Thorpe  
Mary Ann Townsend  
Grace Tripp  
Mimi Tripp

## *Fourth Row:*

Marguerite Ward  
Christine Warren  
Grace Warren  
Mary Ann Watkins  
Dorothy Wheeler  
Frances White  
Katherine White

# FRESHMEN



## *First Row:*

Rose White  
Catherine Whitehurst  
Mary Whitehurst  
Beverly Whitley  
Frances Whitley  
Eloise Williams  
Frances Ann Williams

## *Second Row:*

Ida Gray Williams  
Helen Willoughby  
Nellie Winfield  
Georgia Winstead  
Betty Jo Wood  
Anne Judson Woody  
Olive Woody

## *Third Row:*

Bessie Wooten  
Mary E. Wooten  
Linda Young  
Evelyn R. Wynne  
Elizabeth Worthington



*Classroom Building*



The things we do

# STUDENT COOPERATIVE



DOROTHY LEWIS  
*President*

## Student Cooperative Council

THE STUDENT COOPERATIVE COUNCIL functions as the executive and legislative branch of the Student Cooperative Government Association. Its membership is composed of class representatives, presidents of clubs and organizations, editors of the college publications, vice-chairmen of the Men and Women's Judiciaries, vice-presidents of house committees, and vice-presidents of day-student committees.

The Student Cooperative Council was born on May 5, 1943 when it convened for the first time in the lecture room of the New Classroom Building. Since that memorable date the council has known trials and errors but the sincere efforts of its members and the most commendable leadership of its President, Miss Dorothy Lewis have laid for it a secure foundation in the Student Cooperative Government Association of East Carolina Teachers College.

The Student Cooperative Council grew out of the desire of the Students of E.C.T.C. for a student government functioning as a constructive, unified, cooperative body. Its purpose can be stated in a few words, "to give the student body the best possible service and guidance."

DOROTHY LEWIS,  
*President*

VIRGINIA COOKE,  
*Vice-President*

BURCHIE SMITH JOHNSTON,  
*Historian*

AMANDA ETHERIDGE,  
*Secretary*

MARGARET PERSON,  
*Assistant Treasurer*

CLARINE JOHNSON,  
*Treasurer*





# GOVERNMENT ASSOCIATION



*Front Row: JANE VANN, Chairman; FRANCES TUNSTALL, President of Women's Day Student Committee; MARY EMMA JEFFERSON, President of Wilson Hall. Second Row: DIXIE CHAPPELL, Treasurer; DOROTHY SHEARIN, President of Jarvis Hall; MARJORIE PRIVOTT, President of Cotton Hall; JESSIE B. GOODIN, Vice-Chairman; ELIZABETH CRAWFORD, President of Fleming Hall; ANNIE B. BARTHOLOMEW, Secretary.*

## Women's Judiciary

THE WOMEN'S JUDICIARY of East Carolina Teachers College is composed of nine members elected by the student body. This is the branch of the Student Cooperative Government Association that concerns itself with the disciplinary problems of the women students.

The Women's Judiciary meets once a week to discuss problems of major and minor importance. The main function of this body is to maintain high standards of conduct on our campus.

## Men's Judiciary

THE PURPOSE OF THE Men's Judiciary is to act as a judicial body in all matters concerning discipline of men students, and to support any movement on the campus for the betterment of the college and the students. This year a very small number of men students were enrolled; thus, functions of the judiciary were greatly reduced.



*ROBERT MARTIN, Chairman of Judiciary and President of Men's Day Student Committee; BEVERLY CUTLER, Secretary-Treasurer; ROBERT MORGAN, Member-at-Large; JOE LASSITER, President of Ragsdale Hall. Not Pictured: HIRAM MAYO, Vice-Chairman; JACK JOHNSON, Member-at-Large.*

# YOUNG WOMEN'S



## Y. W. C. A. Officers

HELEN STONE,  
*President*

WILLIE MAE DANIELS,  
*Vice-President*

SYLVIA GREENE,  
*Treasurer*

VIOLET SPARKS,  
*Secretary*

## Freshman "Y" Officers

FOY LEIGH PRITCHARD,  
*President*

LORRAINE DAVIS,  
*Vice-President*

HANNAH RUTH HUMBLE,  
*Secretary*

FRANCES BANKS,  
*Treasurer*



# CHRISTIAN ASSOCIATION



THE YOUNG WOMEN'S CHRISTIAN ASSOCIATION has striven as always to carry out the purpose of the national organization to help students "realize full and creative lives through a growing knowledge of God."

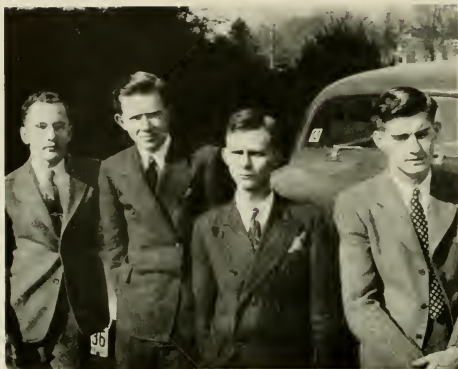
In many of the varied vesper programs, on Sundays and Fridays, and in the choice of "Brotherhood" for the theme of Religious Emphasis Week, with Rev. Charles Jones as chief speaker, the organization has emphasized this year a better understanding of all peoples.

The "Y" again took the lead in sponsoring the World Student Service Fund Drive, this time as a part of the National War Fund Drive. Through this means the members of the "Y" gave concrete expression to their belief that all men are brothers.

In cooperation with the Interfaith Council, the "Y" helped bring Rev. T. B. Cowan of the Norris Religious Fellowship to the campus for a series of talks.

Occasional socials; open house in the "Y" hut on Sundays, in the early fall for freshmen, and later for service men; projects and work groups in Freshman "Y"; and evening prayers in all the dormitories have helped to build well rounded lives.

# YOUNG MEN'S CHRIS



J. C. SHEPHERD,  
*President*

SAM STRICKLAND,  
*Vice-President*

DELTON CREECH,  
*Secretary*

JOE LASSITER,  
*Treasurer*

IN SPITE OF THE SMALL NUMBER of men students on the campus this year the Young Men's Christian Association has had a very successful year. Between fifty and sixty students and faculty members joined the "Y." When one considers that the enrollment of boys for the year averaged about fifty each quarter this seems to be an enviable record.

Members of the Cabinet met in Bayview for the annual fall retreat at which time plans were made for this year's activities. Working with the Young Women's Christian Association, the "Y" has constantly tried to keep religious activities before all the students. A World Student Service Fund drive was sponsored in the fall. A Religious

# TIAN ASSOCIATION

Emphasis Week was held during the winter quarter. During the entire year the two "Y's" have tried to bring outstanding religious speakers to the campus to hold their vesper services.

As a part of the year's activities, the Young Men's Christian Association mailed Christmas cards to all former East Carolina students who are now in service. The "Y" has also tried to maintain contact with its former members who are now in service by sending each an "In Service Membership Card" in the "Y" for their own personal use.



THE CABINET

*First Row:* DR. W. A. BROWN, J. C. SHEPHERD, CLIFTON CRANDELL, BEVERLY CUTLER, DELTON CREECH.

*Second Row:* SAM STRICKLAND, DR. R. L. HILDRUP, STANFIELD JOHNSON, JOE LASSITER, ELLIS BEDSWORTH.



## THE BAND

THE COLLEGE BAND HAS advanced and continues to do so under the able direction of Dr. Karl V. Gilbert, head of the Music Department.

The organization has built up a fine repertoire of music which offers its members helpful, as well as enjoyable experience. This experience is an aid to the student in organizing and conducting the future musicians of America.

DR. KARL GILBERT,  
*Director*







## VOCAL ENSEMBLES

DUE TO THE SCARCITY of men on the campus this year the college choir, as such, was given up. In its place, Mr. Fisher developed a number of small ensembles, which made several public appearances independently, at concerts, and for clubs. The members of one group will long remember one night they sang at the Rotary Club, when the gentlemen insisted on putting out the lights for their rendition of "A Kiss in the Dark."

The membership of these groups was as follows: Girls' Quintet—Doris Lee, Ethel Smith, Josephine Gibson, Jean Roberson, Sally Margaret Johnston; Girls' Septet—Mary Elizabeth Wells, Marguerite Moye, Blanch Ogborn, Marie Whitehurst, Elna Powell, Elizabeth Wells, Nan Little; Madrigal Singers—Dorothy Bethune, Roena Collins, Florie Dell Kennedy, Jean Strickland, Manora Mewborn, Harold MacDougle, Delton Creech, Julian Matthews, Leon Fleming; Sophomore Trio—Mary Blaine Justus, Elizabeth Bridgers, Mary Alice Charlton.



MR. FISHER,  
*Director*



MISS KUYKENDALL,  
*Director*



## WOMAN'S GLEE CLUB

THE WOMAN'S CHORUS under the direction of Miss Gussie Kuykendall, has forty-two members. The chorus took part in the Christmas program presented by the Music Department. A spring concert will be given by the group and several small concerts during commencement.





MARIE COBB,  
*President*

## INTERNATIONAL RELATIONS CLUB

THE INTERNATIONAL RELATIONS CLUB, organized in the winter of 1940, brings together those history and social science majors who have an average of a "3," and who have reached sophomore standing and all others who have twenty-one hours credit in geography, history and social science.

The purpose of the club is to encourage the study of international relations in affiliation with the Carnegie Endowment for International Peace, from which we receive books and other materials on current problems.





## COMMERCE CLUB

**PURPOSE:** To acquaint the students of the Commerce Department with each other; to foster interest in clerical work and in teaching; and to work together with the mutual benefit of its members and the Commerce Department as a whole.

**Adviser:** Dr. E. R. Browning.

Activities of the club consisted of regular monthly meetings which were made up of recreational and literary programs.

The outstanding events of the year were a dance, buying equipment for the club room in the Commerce Department, and entertaining service men in the Wright Building.

AMY FLOYD,  
*President*





## THE ENGLISH CLUB

THE ENGLISH CLUB is an organization of English majors which strives to bring experiences of literary value to its members which they would not receive in the classroom to increase their literary interests by a deeper delving into the best books, magazines, and plays. This naturally leads into a study of the lives of authors and a better knowledge of writing.

This year, with Miss Emma L. Hooper succeeding Dr. Lucille Turner as adviser, many varied and interesting programs have been enjoyed. Among them were readings of poetry, a Christmas pageant and the reading of a play on a subject of current interest.

The club meets in a well-equipped English laboratory. The equipment consists, among other things, of a duplicator, a projector, a good recording machine, files of clippings and pictures, and a very good collection of books and magazines. It is open at all times to English students and has proved a valuable aid to them in reading and studying.



ROENA COLLINS,  
*President*

DOROTHY WHITLEY,  
*President*



# ASSOCIATION of CHILDHOOD EDUCATION

THE PURPOSE OF THIS ORGANIZATION shall be to gather and disseminate knowledge of the movement for the education of young children; to bring into active cooperation all childhood education interests, including parent education; to promote the progressive type of education in nursery school, kindergarten and primary grades, and to raise the standard of the professional training for teachers and leaders in this field.





REBECCA PERRY,  
*President*

## FUTURE TEACHERS OF AMERICA

THE ROBERT H. WRIGHT CHAPTER OF FUTURE TEACHERS OF AMERICA has this year affixed to its charter the sixth gold seal, thus signifying its continuous activity since its organization as one of the first members in the junior branch of the National Educational Association and the North Carolina Education Association.

Its purpose is to sponsor activities through which students who are teachers in training can prepare to take part in professional and civic enterprises. During this year the chapter has engaged in such projects as making Red Cross headdresses and surgical dressings and salvaging waste paper and has encouraged professional interest through its meetings and reading materials.

The chapter has grown under the guidance of its sponsor, Miss Emma L. Hooper, and under the leadership of its presidents: Kathleen Strickland, 1938-39; Frances Cash, 1939-40; Kathleen Lewis, 1940-41; Charlotte Shearin, 1941-42; Helen Stone, 1942-43; and Rebecca Perry, 1943-44. Its growth this year has won it a place on the "Victory Honor Roll."







## PHI SIGMA CHAPTER of SIGMA PI ALPHA

THE PHI SIGMA CHAPTER OF SIGMA PI ALPHA is a national honorary fraternity for students of foreign languages. The fraternity centers its ideals and aims around three symbolic words: strength, permanency, and accomplishment.

This year Sigma Pi Alpha had two meetings a month, one social and the other business. We tried to vary our programs to make them always interesting. Among our activities we helped raise money for the National War Fund and showed some films on Germany, Russia, and the Fighting French.

The officers of the fraternity are Elizabeth Kittrell, President; Esther Maie White, Vice-President; Dorothea Boyette, Secretary-Treasurer; Katie Earl Owen, *Teco Echo* Reporter; Helen Thomas Rollins, *TECOAN* Reporter. Miss Marguerite Austin and Mr. R. C. Deal are our advisers.

The other members of the fraternity include: Hazel Gray Evans, Hazel Harris, Mary Emma Jefferson, Ronald Lee, Janice Lister, Margaret Magill, Dorothy Maynard, Sarah Moore, Nell Murphy, Paula Ross, Jessie Mae Horne, and Alma Simmons.

ELIZABETH KITTRELL,  
*President*







## PHI SIGMA PI FRATERNITY

THE TAU CHAPTER OF PHI SIGMA PI is a National Professional Education Fraternity for men in teacher training colleges and universities in the United States. Requirements for election to this Education Fraternity are superior scholarship, leadership, personality and character in teacher training.

Tau Chapter, the first national fraternity for men to be established on our campus was given a charter in 1936 with 21 members. The chapter now has a total of 126 members with 22 active members. The national organization grew out of a local fraternity in Missouri which was founded February 14, 1916.

During the year, the fraternity has had several speakers at its meetings who were well qualified to speak on Teacher Training Education. Last spring the fraternity had its annual founders day banquet with Dr. Ralph McDonald as its guest speaker.

The officers of the fraternity are Stanfield Johnson, President; Beverly Cutler, Vice-President; Robert B. Morgan, Secretary; Sam Strickland, Treasurer; Robert Martin, Assistant Secretary; and Ellis Bedsworth, Sergeant-at-Arms.

Honorary members of the Fraternity are: Hon. Clyde A. Erwin, Dr. Herbert McBarker, Dr. Leon R. Meadows, Dr. Paul Toll, Dr. H. C. Haynes, Hon. F. C. Harding, and Dr. A. D. Frank.

Dr. Beecher Flanagan, who was originally a member of the chapter at George Peabody College, is the faculty sponsor and has done much work to improve the success of the national and local organizations.



WILLIAM STANFIELD JOHNSON,  
*President*



## SCIENCE CLUB

THE SCIENCE CLUB is not an organization for science majors alone, but it is for all people on the campus who have a real interest in science. In the club are both faculty members and students. Dr. Wilton and Dr. Deloach are the official advisers, although the other members of the Science Department have also been cooperative.

The program of work for the year has been built around the theme "Our Surroundings." During the first meeting of the year a talk was made about the native trees on the campus. A club room has been set aside and furnishing it is one of the club's projects.

The club is also making a study of other Science clubs in the country—their organization and work—and plans to help in further organization of clubs in high schools are being made.

ANNIE AUDREY STEVENSON  
*President*





## HOME ECONOMICS CLUB

BELIEVING STRONGLY IN THE supreme worth of the individual, our club proposes to develop personality, leadership, initiative, and poise. Attempting to do this, it is our hope that we may simply "serve our community, our schools, and our families."

The theme of our club work this year was "Home Economics in War Time," and our monthly programs centered around various phases of home economics-nutrition, child care, 4-H club work, home economics teaching, and home-making. The Christmas meeting was devoted to preparing and wrapping gifts to be sent to the Grandfather's Home for Children at Banner Elk, North Carolina, and at the May meeting, the club honored the senior home economics students.

The club is a member of the North Carolina Association of Home Economics Club.



ANNIE KATE EVANS,  
*President*

SARAH HUNTER,  
*President*



## MATHEMATICS CLUB

THE PURPOSE OF THE MATHEMATICS CLUB this year has been to help its members to become better acquainted with one another and to show them the vital importance of mathematics in this present crisis. Throughout the year the programs have presented speakers who stressed the special need for mathematics now.

Officers: Sara Hunter, President; Charlotte Wooten, Vice-President; Annie Lee Eason, Secretary-Treasurer; Nina Cook, *Teco Echo* Representative; Gwendolyn Ward, *TECOAN* Representative; Hilda Moore, Social Chairman.

Members: Katherine Abernathy, Ruth Baker, Aldine Barnhill, Vivian Bass, Rena Bateman, Rhoda Mae Bone, Gretchen Boswell, Dorothea Boyette, Millison Bryant, Miss Ellen Caldwell, Leslie Chadwick, Nina Cook, Clifton Crandall, Marie Darden, Allie Mitchell Dilday, Annie Lee Eason, Miss Maria D. Graham, Alton Gray, Sylvia Green, Lois Howard, Sara Hunter, Rebecca Kirkland, Elizabeth Kittrell, Rosa Lancaster, Jean McDonald, Julian Matthews, Hilda Moore, Robert Morgan, Rebecca Pridgen, J. C. Shepherd, Doris Stevens, Dixie Sugg, Dorothy Shearin, Gwendolyn Ward, Miss Louise Williams, Advisers, Charlotte Wooten.





HAZEL WILLIFORD,  
*President*

## ALUMNI DAUGHTERS AND SONS

THE ALUMNI DAUGHTERS AND SONS is made up of students belonging to the second generation of the alumni.

The members serve as a link in the chain between the alumni and the college—the past and the present. In this capacity they strive to uphold the best traditions of the past and promote a closer feeling of friendship among the sons and daughters of the alumni.





GERALDINE TAYLOR  
*President*

## BETA KAPPA CHAPTER OF PI OMEGA PI

BETA KAPPA is a chapter of Pi Omega Pi, a national honorary business education fraternity with chapters in most of the leading colleges and universities in the United States where business education is taught. Requirements for election to Pi Omega Pi are superior scholarship in commerce, leadership, personality and character.

Beta Kappa was organized on February 12, 1944, with twenty-nine charter members. On this date an initiation-dinner was given, presided over by Dr. E. R. Browning, head of the business education department, and Miss Audrey Dempsey, who are members of the Zeta Chapter at Colorado State College of Education.

The charter members are: Ruth Allen, Annie B. Bartholomew, Rena Bateman, Gretchen Boswell, Mary Bryan, Dr. E. R. Browning, Dixie Chappell, Harriet Chestnutt, Tommie Lou Corbitt, Audrey Dempsey, Lena Ellis, Amy Floyd, Joyce Hales, Laura Hearne, Betsy Hobgood, Clarine Johnson, Mildred Johnson, Evelyn Jones, Dorothy Lewis, Velma Lowe, Daisy Mayo, Manora Mewborn, Annie Sue Perry, Ellen Riddick, Maribelle Robertson, Marjorie Rowe, Katherine Russell, Geraldine Taylor, Frances Tunstall, Jane Vane, and Vivian Yelverton.



NELL FINCH MURPHY  
*President*



## JARVIS FORENSIC CLUB

THE JARVIS FORENSIC CLUB, one of the few clubs on the campus encouraging intellectual activities, was organized in 1938 with a definite purpose, that of interesting more students in debating and various other phases of public speaking.

The highlights of the club year come on the occasions we participate in debates with other colleges. Since its organization, the club has won decisions over many of the prominent colleges of the South. Among them are the University of North Carolina, the University of Alabama, Davidson College, Wingate and Bridgewater. Among the more outstanding debaters of the club have been Mary Gaskins, Mildred Beverly, Jennings Ballard, Carlyle Cox and James Worsley.

Much of the success of the club may be accredited to its sponsor, Dr. M. N. Posey, a member of the English faculty. Dr. Posey has been the sponsor of the Forensic Club since its organization. Through his wide and varied experience in this field, he has been in position to offer constructive criticism and skillful leadership.



Backstage crew—at work.  
Set for "Ladies In Retirement."  
Cast of "Ladies In Retirement."  
Billy Greene and Mary Alice  
Charlton in "Ladies In  
Retirement."

Backstage crew—horse play.  
Virginia Cooke as "Claudia."  
Virginia Cooke and Ed  
Beddingfield in "Claudia."

Curtis Butler, Jo Gibson,  
Gretchen Webster, Jimmy  
Warren, in "Jane Eyre."  
Gretchen Webster as "Jane";  
Jimmy Warren as "Rochester."

## CHI PI

CHI PI HAS BEEN from its beginning a living and active organization. Its main purpose has been, is and will continue to be the quickening of interest in dramatics on the part of the whole school. This is accomplished not only by presenting plays for the entertainment of the student body and townspeople, but by offering any student interested in such things the chance to work on these productions in every capacity from actor to carpenter.





The things we print

# PUBLICATIONS BOARD



DR. R. J. SLAY

CHRISTINE HELLEN

DR. E. R. BROWNING

DOROTHY RAE DAVIS

HELEN FLYNN

MARIBELLE ROBERTSON

DR. DENVER BAUGHAN

SYBIL BEAMAN

DR. M. N. POSEY

MARGARET LEWIS

MARGIE DUDLEY

GARNETTE CORDLE

MR. J. B. CUMMINGS

DORIS HOCKADAY

DR. BEECHER FLANAGAN





CHRISTINE HELLEN  
*Editor-in-Chief*

# *The* TECOAN of 1944

THROUGH TRIAL AND ERROR the staff of the 1944 TECOAN has tried to give to you an annual that you will enjoy through the years. At this time we would like to mention a few names of whom without their help the TECOAN could not have been published:

Mr. Frank Fleming of the Lassiter Press; Miss Martha Mauney of the Charlotte Engraving Company; Dunbar Studio in Charlotte; Beverly Whitley, photographer; Lou Lassiter for the division drawings; and Dr. E. R. Browning and Dr. R. J. Slay, faculty advisors.



DOROTHY RAE DAVIS  
*Business Manager*



*Mrs. E. W. Hellen*

GREENVILLE, NORTH CAROLINA

# In Memoriam

Mrs. R. W. Davis

SEABOARD, NORTH CAROLINA

Sponsor for

1944 *Tecoan*

JUNE 17, 1886

JULY 19, 1943



MARIBELLE ROBERTSON  
*Editor-in-Chief*

## THE TECO ECHO

DURING THE PAST YEAR the staff of the *Teco Echo* has tried to live up to the traditions and ideals set up by former students who have worked on the newspaper and have built up high standards of journalism for the East Carolina Teachers College news organ.

The *Teco Echo* has upheld the principles of freedom of the press. Members of the staff have tried to get the news and put into print accounts of the activities carried out on the campus.

In its editorial policy the *Teco Echo* has endeavored to support what it believed to be right and has opposed what it considered to be wrong. It has held malice toward no one individual or campus group but has attempted to present to the student public the news as it happened.



SYBIL BEAMAN  
*Business Manager*



MARGIE DUDLEY  
*Co-Editor*



MARGARET LEWIS  
*Co-Editor*



GARNETTE CORDLE  
*Business Manager*

## PIECES O' EIGHT

THIS YEAR MORE THAN EVER before the aim of the *Pieces O' Eight* has been to make this publication a magazine of the students. An effort has been made to encourage contributions from the student body. Varied interests and much new talent has been discovered in this manner. The magazine has sought to provide a healthy escape from thoughts of war and at the same time broaden and heighten the outlook of the magazine with a few thought-provoking and informative stories and articles on more serious subjects.







# SOCIETIES



SARA BAUGHAN, *Mascot*  
EMERSON SOCIETY



JIMMY HANKNER, *Mascot*  
POE SOCIETY



BRYCE CUMMINGS, *Mascot*  
LANIER SOCIETY

# POE SOCIETY



ALICE COPELAND

President

EDITH WILKERSON,  
*Treasurer*

MARGARET PERSON,  
*Vice-President*

LEONA SASSER,  
*Secretary*



THROUGHOUT THIS YEAR the Edgar Allan Poe Society has sought to learn more about the poet for which it was named. We have bought a new banner, learned songs about Poe, and learned the true facts of his life.

The society has played its part in the uniting of the societies on the campus. Since our dance came in the early spring, we used Easter as the theme for the occasion.

The call for service has been heard by the Poe members and they have helped in the war effort by working in the Red Cross Room and buying war bonds and stamps.

# EMERSON SOCIETY



MARY "BILLIE" BRYAN

President

MARY ALICE CHARLTON,  
*Vice-President*

ALLENE VAUSE,  
*Treasurer*

LOUISE WOOTEN,  
*Secretary*



THE RALPH WALDO EMERSON LITERARY SOCIETY this year has excelled our expectations. Beyond the attempt to create a love of Emerson's masterpieces within the hearts of the members of our society, it has kindled the flame of a better social life on our campus.

Among the activities of the society throughout 1943-44 were the three receptions given for artists who visited our campus, a Christmas party, Red Cross work, entertainment of service men in the Campus Building, the President's Ball, and the main event of the year was the May Day program.

Marshals for the Emerson Society this year were Virginia Knowles, Henrietta Cooper, and Alice Wiggins.

Without a spirit of cooperation and brotherhood the society would have been unable to achieve the goal set for it. This has been a successful year for the Emerson Society, and we look forward to a brighter and even more successful one next year.

# LANIER SOCIETY



GRETCHEN WEBSTER

President

DOROTHEA BOYETTE,  
*Treasurer*

GRACE CLARK,  
*Vice-President*

RUTH DAVIS,  
*Secretary*



THE WORTHY PURPOSE FOR WHICH Sidney Lanier lived are the ideals ever before the loyal members of the Lanier Society.

This has been a most successful year for the Laniers, evidence of which may be recognized by the efficiency with which it has functioned both alone and in cooperation with the Emersons and the Poes.

The feature of the year was the mid-winter dance which was carried out in a spirit of frivolity and pleasing originality.





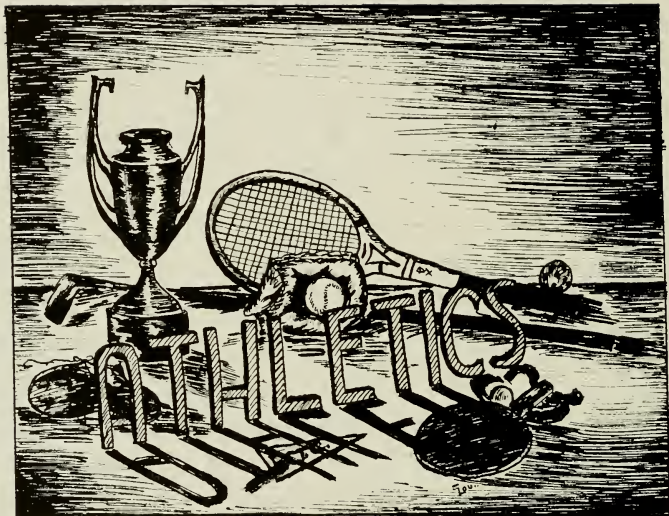
GLADYS MUNFORD  
Chief Marshal

# COLLEGE MARSHALS



*Front Row:* ROBERT MORGAN, ALICE WIGGINS, RUTH WINSLOW, PAT EDWARDS, MARGIE DUDLEY, MARY ALICE COHOON.

*Back Row:* MARY BLAINE JUSTIS, ELIZABETH DARDEN, CAROL LEIGH HUMPHRIES, CAMILLE JERNIGAN, MARGARET LEWIS, MARIBELLE ROBERTSON.



The things we play

# WOMAN'S ATHLETIC ASSOCIATION

LEE BLEDSE,  
*President*

VERNA CARRAWAY,  
*Vice-President*

DOROTHY PEELE,  
*Secretary*

ANNIE BRITTON BARTHOLOMEW,  
*Treasurer*





THE WOMAN'S ATHLETIC ASSOCIATION, one of the largest and most outstanding organizations on the campus, has seen a very successful year through the leadership of our adviser, Miss Stallings, and our president, Virginia Lee Bledsoe.

We have regular monthly meetings to discuss our problems, make plans for activities, and enjoy a bit of recreation.

Each member of the organization has an opportunity to participate in any of the varied sports which are sponsored—soccer, volley ball, basketball, softball, tennis, and field hockey. The highlight comes when the varsity teams are chosen.

Our organization puts before the student body a program of activities which promotes health, leadership, and fun.



MEMBERS OF THE TENNIS TEAM: Virginia Knowles, Lee Bledsoe, Amanda Etheridge, Dorothy Peele, Annie Britton Bartholomew.

One of the major spring sports at East Carolina Teacher's College is tennis. Most of the W.A.A. girls participate in this sport. Pictured above are the girls who make up the Varsity Tennis Team.

# TENNIS





Dot Shearin  
Amanda Etheridge  
Nannie Lou Little  
Verna Carraway

"Sit" Knowles  
Dot Peele  
Doris Stevens  
"B. B." Bartholomew

# SOFTBALL VARSITY



Amanda Etheridge  
 Dot Peele  
 Dixie Chappell  
 Margaret Hall  
 Lee Bledsoe  
 Nell Murphy  
 Jean Matthews  
 Lucy Winston  
 Penny Smith  
 Carolyn Register  
 "Bobbie" Brewer  
 Hilda Moore  
 "B. B." Bartholomew  
 Molly Brown

## FIELD HOCKEY VARSITY



Lee Bledsoe  
 Amanda Etheridge  
 Doris Stevens  
 Margaret Hall  
 Lucy Winston  
 Jean Scarborough  
 Nell Murphy  
 Polly Taylor  
 Anne Woody  
 Dot Peele  
 Carolyn Register  
 "B. B." Bartholomew  
 Hilda Moore  
 Molly Brown

## SOCCER VARSITY

Amanda Etheridge  
 Verna Carraway  
 Nancy Wynne  
 Nannie Lou Little  
 "B. B." Bartholomew  
 Jerry Albritton  
 Elsie West  
 Doris Stevens  
 Dot Peele  
 Lucy Winston  
 "Sit" Knowles  
 Nell Murphy

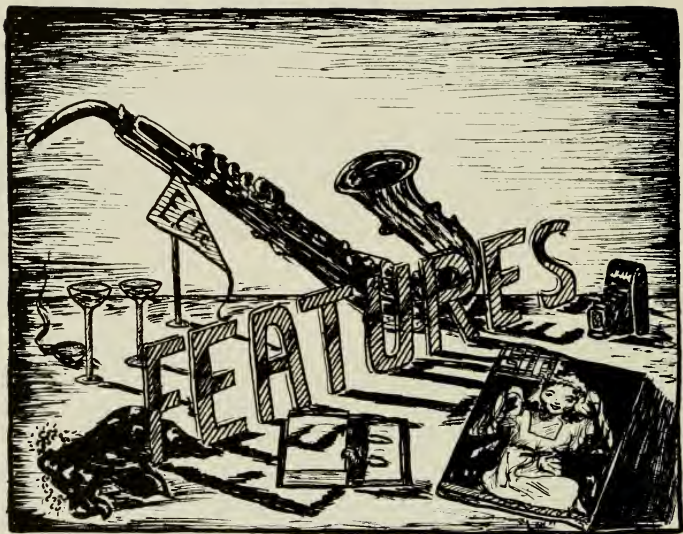


## BASKETBALL VARSITY



Amanda Etheridge  
 Dot Peele  
 Lee Bledsoe  
 Helen Rouse  
 Margaret Hall  
 "Sit" Knowles  
 Doris Stevens  
 Nell Murphy  
 Carolyn Register  
 Isabelle Humphrey  
 Lucy Winston  
 Verna Carraway  
 Julia Ann Hancock  
 "B. B." Bartholomew

## VOLLEY BALL VARSITY



WE NOW TURN FROM OUR STUDIES and activities to bring to you the six most outstanding seniors chosen by their class because of their versatility, personality, and leadership.

Free

Ones We Honor



*Miss Dorothy Pearsall*

WALLACE, NORTH CAROLINA



*Miss Sue Parker*

POLLOCKSVILLE, NORTH CAROLINA







*Miss Maribelle Robertson*

GREENVILLE, NORTH CAROLINA

*Miss Jane Vann*

CLINTON, NORTH CAROLINA





*Miss Lillian M. Boyette*

AHOSKIE, NORTH CAROLINA

*Miss Christine Hellen*

GREENVILLE, NORTH CAROLINA





*The barn dance is over.  
Gosh, it's deep!  
Colonel, be good to us.  
Patiently waiting.  
Jack and jeep.*

*W'bat a trio.  
W'bat a retreat!  
Already taken, girls.  
Monkey.  
Fix it good.  
It's so good to them.*

*W'bat goes up must come down.  
Rosie and "Betsy."  
Jerry and Katie.  
She's Florida bound.  
Mike is here again.*



*Judge them not by what they do.*

*"B. B."*

*It's the thing to do!*

*Bob's back!*

*Brother and sister.*

*Hungry, girls?*

*They stick together.*

*Just posing!*

*Relaxing, boys?*

*Yum, yum!*

*Shivering and shaking.*

*Don't stop now!*

*Salute to you.*

*The two-some.*

*Keep your feet off the ground.*

*Ready to go.*





*The admiral and his aides.  
Buddies.  
Guess who!  
Those happy day students.  
Poor horse!*

*Our Dean.  
Roommates.  
Working girls.  
Freshmen? You bet!  
Peek-a-boo.  
Fleming Hall belles.*

*Hiking is fun.  
It must be the snow.  
Bring them in.  
Don't do it, Ed.  
Ready for breakfast.*



*Inseparable.*

*Long, long ago.*

*Good old summertime.*

*Pepsi-Cola hits the spot.*

*Behind the eight ball.*

*Doing their part for a closer  
victory.*

*Ma, she's making eyes at me!*

*W'bat's up, Millie?*

*Snow birds.*

*Editors.*

*Town-crier.*

*"Sit."*





*Sweethearts forever.*  
*Eating as usual.*  
*Our boys.*  
*The gang's all here.*

*Ritzy, bub?*  
*Stepping off.*  
*Star gazing.*  
*No luck, girls?*

*He's always there.*  
*Mutt and Jeff.*  
*Devotion.*  
*Dirty feet—no sweetheart.*

*Snowball Janie.*  
*Hennie on the rail.*  
*Mascot for you.*  
*Remember Leslie?*

Seeing double.  
Apex John.  
Snowbirds.  
Up a tree.

Look away, look away.  
A thorn in the rosebush.  
In my arms, in my arms.  
So demure.



*Congratulations*

TO THE

GRADUATES OF 1943

We Are Proud of Your  
Accomplishment!

May Your Future Be Filled  
With Success and Happiness!

**Belk-Tyler Company**

"Eastern Carolina's Shopping Center"

GREENVILLE

NORTH CAROLINA

**BEST JEWELRY COMPANY**

"Eastern Carolina's Leading Jeweler"

Established 1901

QUALITY . . . VALUE . . . SERVICE

"Your Jewelers"

Smart Apparel for Women

**LOWE'S**



GREENVILLE, N. C.

Compliments of

**B R O D Y ' S**

Ladies' Department Store



GREENVILLE

NORTH CAROLINA

Congratulations to Seniors of 1944

**J. KEY BROWN**

Druggist

5 POINTS

GREENVILLE, N. C.

Where Southern  
Hospitality Blends  
With An Air of  
Refinement



**Olde Towne Inn**

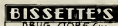
SAVE AND HAVE  
HOME BUILDING AND LOAN  
ASSOCIATION

403 Evans Street

GREENVILLE

NORTH CAROLINA

Congratulations and Best  
Wishes from



427 Evans Street

"Greenville's Finest Drug Store"

The College  
Stationery Store  
and  
Soda Shop

•  
*Congratulations,  
Seniors*

☆ Photographs

*Bakers' Studio*  
Greenville, N. C.

ALL WORK GUARANTEED

COMPLIMENTS OF

KARES BROS.

Restaurant, Soda and News Service

"We Serve The Best"

Compliments of

WHITES STORES

Greenville, N. C.  
Washington, N. C.  
Windsor, N. C.  
Ahoskie, N. C.  
Scotland Neck, N. C.  
Mount Olive, N. C.

Eastern Carolina's Shopping Center



BLOUNT-HARVEY

PEOPLES' BAKERY

Patronize the College "Y" Store

VICTORY GRILL

431 Evans Street

Greenville, N. C.

We Serve Only the Best Food

Greenville's Largest and Most Up-To-Date

I. R. Joseph, Owner

Compliments of

C. HEBER FORBES

For the Best

IN FOODS

HONEYCUTT'S MARKET

LAUTARES BROS.

... JEWELERS ...

Watches, Jewelry, China Gifts  
— Watch and Clock Repairing —

Compliments of

ROSE'S 5, 10 & 25c STORE

Congratulations to

SENIORS OF 1944

GREENVILLE  
CHAMBER OF COMMERCE

Congratulations Seniors

—and—

For Your Health's Sake

LIVE BETTER . . . LIVE ELECTRICALLY

GREENVILLE UTILITIES  
COMMISSION

Compliments of



703 Dickinson Avenue

Greenville, N. C.

Compliments of

**JOHN FLANNAGAN BUGGY  
COMPANY**

Your Ford-Lincoln-Mercury Dealer

Serving Greenville and Eastern Carolina Since 1866

**EIRD'S DEPARTMENT STORE**  
"Sells It For Less"

GREENVILLE

NORTH CAROLINA

DRINK *Coca-Cola* IN BOTTLES  
**COCA-COLA BOTTLING CO.**

Compliments of

**PALACE BARBER SHOP**

Compliments of

**GREENVILLE WHOLESALE  
CANDY CO.**

GREENVILLE

NORTH CAROLINA

Be Smart and See William's First  
**WILLIAM'S**  
The Ladies' Store

Compliments of  
**STAUFFER'S**  
Jewelers  
Greenville, N. C.

The Best  
**HOT DOGS IN TOWN**  
**DIXIE LUNCH**

Congratulations  
From  
**WHITE CHEVROLET CO.**

YOUNG AND OLD  
For an Afternoon or Evening's  
Enjoyment, Join Us at

**THE SKATING RINK**

5th Street

Greenville, N. C.

Compliments of

**GUARANTY BANK AND  
TRUST CO.**

Established 1901

Time Tested

Member Federal Deposit Insurance Corp.



**HOME FURNITURE STORE**

**"Right Price Furniture Store"**

R. W. Davenport, Manager

701 Dickinson Avenue

Greenville, N. C.

Compliments of

**CAROLINA DAIRY**

**SCOTT'S DRY CLEANERS**

One Block Back of Post Office

**—We Satisfy—**

PAUL A. SCOTT, Mgr.

GREENVILLE, N. C.

Compliments of

**J. C. PENNEY**

GREENVILLE

NORTH CAROLINA

**ROUSE PRINTERY**

Office Supplies . . . Stationery

Printing . . . Engraving

Compliments of

**LeANNE BEAUTY SALON**

Flowers for all Occasions

**COX FLORAL SERVICE**

Compliments of

**ORMAND WHOLESALE**

**GREENVILLE FLORAL  
COMPANY**

Telephone 2827

315 Cotonche St.

Compliments of

**TIP BOTTLING COMPANY**

A  
TRIBUTE  
TO OUR  
FORMER  
CLASSMATES  
NOW SERVING  
IN THE  
ARMED FORCES  
OF OUR  
COUNTRY

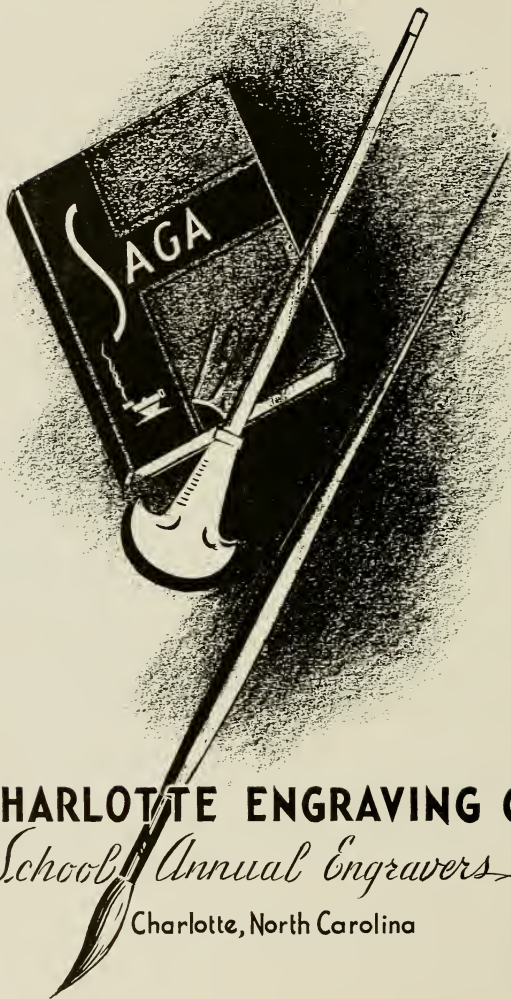
# DUNBAR STUDIO

*Fine Portraits*

228½ N. Tryon Street

Charlotte, N. C.

OFFICIAL PHOTOGRAPHERS  
FOR  
The 1944 TECOAN



**CHARLOTTE ENGRAVING CO.**

*School Annual Engravers*

Charlotte, North Carolina



# *School Publications*



P R I N T E R S   O F   T H E   1 9 4 4   T E C O A N









JOYNL



30372 0104 0233 4

