

The 1943 TECOAN





TECOAN

Nineteen Forty-three

Janie O. Eakes, Editor

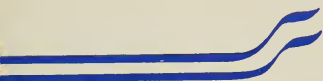


Lois Sessoms, Business Mgr

The
TECOAN

*Published by the Student Body
of East Carolina Teachers College
Greenville, N. C.*

1943



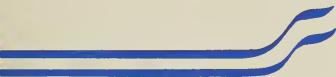


FOREWORD

WITH THE FULL CONSCIOUSNESS of the seriousness of the present world situation, we have tried to make this annual a record of the best in this college year. We have not attempted to carry out any consistent theme in this yearbook, but have indicated each division of it by an appropriate symbol

In This Book . . . Classes . . . Activities . . . Athletics . . . Features

The whole has been unified somewhat, however, by the fact that an undercurrent of patriotic sentiment runs throughout. We have had to conserve material and space this year, but we sincerely hope that this annual may be successful in its aim, which is, after all, only to serve in future years as a means of transportation back to the vanished days of happiness we knew in 1943.

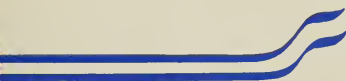




Dr. Howard J. McGinnis

Dedication

THE 1943 TECOAN is dedicated to Dr. Howard J. McGinnis, one of the most beloved men on our campus. Both as an administrator and as a teacher he has proven himself a true friend, giving freely of his time and energy to the solution of our many problems. His guidance, enthusiasm, and untiring efforts have been a real inspiration to us to set our ideals high, and his practical outlook has helped us make decisions which, we believe, will prove of great value throughout our lives. So it is with joy and pleasure and grateful hearts that we pay this tribute to him—our devoted teacher, administrator, and friend.



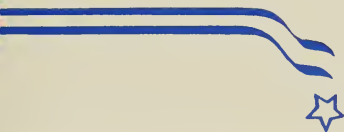


In MEMORIAM

THIS PAGE is humbly dedicated
to our East Carolina Teachers Col-
lege boys who lost their lives in
action for their country.



Austin Building



CAMPUS



Library



Classroom Building

Campus Building



SCENES



Front Campus

Classroom Building





Dear Class of 1943:

For the past four years you have conquered the difficulties of college life as you have met them day by day. We trust you have gained strength for the tasks that are ahead. Your job is to rebuild a world that is tottering on the verge of ruin; a world where nation is set against nation; race against race, and slavery against freedom. In your efforts to meet the responsibility that has been placed upon you may I urge you to eliminate hate and in its place substitute love for humanity; be tolerant toward all; look for the best in life and you will find it; learn to evaluate properly time, things, ideas, and people; carry your share of the community load—more than your share if necessary; exercise initiative; preserve a fine sense of humor; render the best service you can to others. Your Alma Mater follows you with her prayers.

Sincerely yours,

LEON R. MEADOWS, *President.*

ADMINISTRATION

THE MESSAGE I wish to give you has been well expressed by Patience Strong when she says:

"One life and one alone we have to live upon this little earth. One life in which to learn so much—to seek and find and prose our worth. So waste no time on fruitless quests that get you nowhere in the end. The gold of Time is yours to squander or with care to use and spend.

ANNIE L. MORTON

THE NATIONAL EMBLEM of democracy and freedom so gloriously uplifted by our sons throughout the world today is the sole ray of hope in an almost hopeless, subjugated, and oppressed world. Let us as teachers of youth perpetuate the spirit and the reality of democracy, not through words alone, but by democratic living, democratic thinking, and democratic practices in teaching.

HERBERT REBARKER



Administration



MISS OLA ROSS
Assistant Registrar

DR. LEON MEADOWS
President

DR. HOWARD J. MCGINNIS
Registrar

MRS. AGNES BARRETT
Secretary to the President

MISS HAZIL WILLIS
Secretary

MISS ELLEN BOWEN
Head of Placement Bureau

MRS. MILDRED OWENS
Treasurer's Assistant

E.C.T.C. FACULTY . . . 1943



Education and Psychology

MISS LUCILLE CHARLTON
Education

DR. E. L. HENDERSON
*Director of Instruction,
Education and Psychology*

MISS ANNIE C. NEWELL
Education

DR. H. C. HAYNES
Education and Psychology

DR. CARL L. ADAMS
*Director of Instruction,
Education and Psychology*



Dining Hall Staff

MRS. ROSE HARRELL
Assistant Stewardess

MRS. L. R. RIVES
Stewardess to Dining Hall

MISS VIRGINIA WELDON
Dietitian



Commerce Department

MISS LENA C. ELLIS

DR. E. R. BROWNING
Head of Department

MISS AUDREY DEMPSEY

MISS VELMA LOWE

English and Foreign Language

First Row:

MISS MAMIE JENKINS
MISS MARGUERITE AUSTIN
DR. LUCILLE TURNER
MISS EMMA L. HOOPER

Second Row:

MISS MARY GREENE
MISS LOIS GRIGSBY
MR. R. C. DEAL

Third Row:

DR. DENVER BAUGHAN
DR. M. N. POSEY

E.C.T.C. FACULTY . . . 1943

Geography

DR. W. A. BROWN

MR. PARNELE PICKLESIMER

MR. J. B. CUMMINGS



Science Department

DR. B. B. BRANDT

DR. DELOACH

MISS CHRISTINE WILTON

DR. R. J. SLAY
Director of Instruction, Science

MISS MARY CAUGHEY



Home Economics Department

MISS SARA COX

MISS MABEL LACY

MISS ETHEL WATTERS

MRS. ADELAIDE BLOXTON

MISS KATHERINE HOLTZCLAW

MISS MARGARET SELLMAN

MISS PEARL CHAPMAN

History and Social Science

MISS LAURA ROSE
History

MISS SALLIE JOYNER DAVIS
History

MRS. BLAINE
Social Science

DR. E. C. HOLLAR
History

DR. BEECHER FLANAGAN
Economics

DR. A. D. FRANK
Director of Instruction, History

DR. R. L. HILLDRUP
History



E.C.T.C. FACULTY . . . 1943

Mathematics Department

MISS LOUISE WILLIAMS

MISS MARIE GRAHAM

MISS CALDWELL

DR. HERBERT REBARKER
*Director of Instruction,
Mathematics*



Music Department

MISS ETHERIDGE

MISS LOIS V. GORRELL

MISS GUSSIE KUYKENDALL

MR. DENTON ROSSELL

MR. ALMA DITMAR



MISS SUE NORWOOD
Dormitory Matron

MISS RUTH WHITE
Dormitory Matron

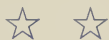
MISS ANNIE L. MORTON
Dean of Women

MRS. ELIZABETH SMITH
Assistant Dean of Women



OFF TO CLASSES



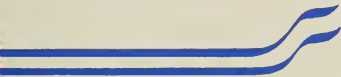


FRESHMEN, SOPHOMORES, JUNIORS, AND SENIORS
ALL MAKE UP OUR STUDENT BODY.



SENIORS

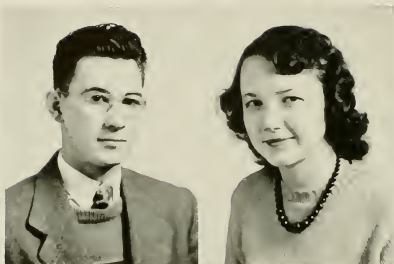




SENIOR OFFICERS

JOYCE DUNHAM	<i>President</i>
MARGIE DAVIS	<i>Vice-President</i>
ADMINTA EURE	<i>Secretary</i>
VIRGIL WARD	<i>Treasurer</i>

Seniors



WARREN ALDRIDGE
Vanceboro, N. C.

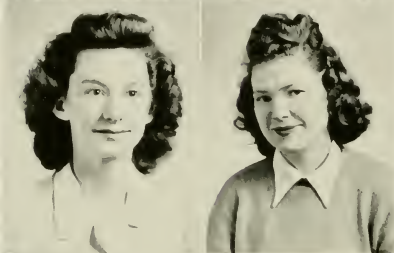
Science and Social Science

Louisburg, 1, 2; State, 3; Wake Forest, 4; Varsity Baseball, 4; Intramural Football, 4; Varsity Club, 4; Young Democrat Club, 4; Y.M.C.A., 4; English Club, 4.

JEANETTE AMICK
Mebane, N. C.

Primary

Louisburg, 1, 2; Association of Childhood Education, 3, 4; Y.W.C.A., 3, 4.



MARY ARRINGTON
Beaufort, N. C.

Primary

Poe Society, 1; W.A.A., 3; Association of Childhood Education, 3, 4; Y.W.C.A., 4.



FRANCES AVERETTE
Wake Forest, N. C.

Grammar

LOUISE AVERETTE
Oxford, N. C.

Commerce and Social Science

Louisburg, 1; Y.W.C.A., 2, 3, 4; Young Democrat Club, 2, 3, 4; Social Committee, 2, 3; Alumni Daughters and Sons, 2, 3, 4; Commerce Club, 2, 3; Senior Superlative, 4.

DORA BELLE AVERY
Clayton, N. C.

Primary

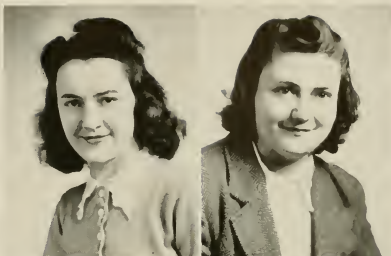
Seniors

MILDRED LEE AYCOCK

Black Creek, N. C.

Grammar

Y.W.C.A., 1, 2, 3, 4; W.A.A., 1; Poe Society, 2; Young Democrat Club, 2, 3; Future Teachers America, 3; Association of Childhood Education, 3, 4; Reporter, 4

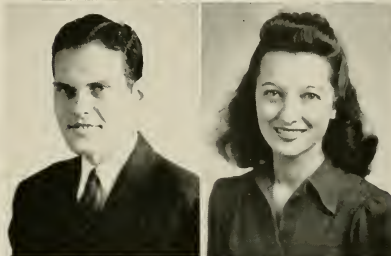


BERNICE BALLANCE

Lake Landing, N. C.

Commerce

M.S.A., 1, 2, 3, 4; Y.W.C.A., 1, 4; Commerce Club, 3, 4.

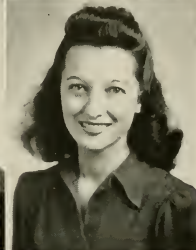


JENNINGS BALLARD

Alexis, N. C.

English

Brevard College, 1, 2; Y.M.C.A., 2, 3; Cabinet, 3; Men's Student Government, 4; Jarvis Forensic Club, 3, 4; Vice-President, 3; President, 4; Associate Editor *Teco Echo*, 4; Young Democrat Club, 3, 4; Delegate to Student Legislature, 3, 4.



ELOISE BAREFOOT

Benson, N. C.

Grammar

Campbell College, 1, 2; Social Committee, 4; Y.W.C.A., 3, 4; Association of Childhood Education, 4; Young Democrat Club, 3, 4; W.A.A., 4; B.S.U. Council, 3, 4; B.S.U. Trio, 3, 4; Y.W.A. Music Director.



JONNIE JAYE BARNES

Black Creek, N. C.

Primary

Y.W.C.A., 1, 2, 3, 4; Lanier Society, 3, 4; Young Democrat Club, 2, 3; Association of Childhood Education, 2, 3, 4; M.S.A., 1, 2, 3, 4; M.S.A. Cabinet, 1, 2, 3, 4; President, 4; College 4-H Club, 3, 4; Secretary of Class, 3.



NELLIE REESE BARNES

Clayton, N. C.

Primary

Seniors



BEATRICE BARNETTE
Buxton, N. C.
French and English



CATHERINE BARNHILL
Greenville, N. C.
Grammar



CAROL MAE BARTLING
New Bern, N. C.
Primary



Mars Hill Junior College, 1, 2; Association of
Childhood Education, 4; W.A.A., 4

MAYDELL BATCHELOR
Jonesboro, N. C.
Primary

Campbell College, 1, 2; Y.W.C.A., 3, 4; Association
of Childhood Education, 3, 4; B.S.U. Council,
4; Big Sister, 4.



ESTELLE BATTEN
Selma, N. C.
Primary



College Choir, 1; Lanier Society, 2, 3, 4; Young
Democrat Club, 2, 3; College Band, 3, 4; Y.W.C.
A., 4; Association of Childhood Education, 4.

JANE BEACHUM
Star, N. C.
Physical Education and History

Appalachian State Teachers College, 1, 2; W.A.A.,
3, 4; Lanier Society, 3, 4; Young Democrat Club,
3, 4; Y.W.C.A., 4; International Relation Club,
4; M.S.A., 3, 4; Varsity Basketball and Softball.

Seniors

ALMA LOUISE BENNETT

Raleigh, N. C.

Grammar

Young Democrat Club, 1, 2, 3, 4; Y.W.C.A., 1, 2, 3, 4; Association of Childhood Education, 2, 3, 4; Poe Society, 1, 2, 3, 4.



MILDRED BEVERLY

Ahoskie, N. C.

English and Science

College Orchestra, 1, 2; Young Democrat Club, 2, 3, 4; W.A.A., 1, 2, 3; Teco Echo Representative, 3, 4; Jarvis Forensic Club, 1, 2, 3, 4; Program Chairman, 2, 4; President, 4; Science Club, 1, 2, 3; English Club, 1, 2, 3, 4; TECOAN Representative, 3; President, 4; Y.W.C.A., 3, 4; Feature Editor Pieces of Eight, 3; Who's Who in American Colleges and Universities.



RUTH BIZZELL

Newton Grove, N. C.

Home Economics and Science

Home Economics Club, 1, 2, 3, 4; Secretary, 2; President, 4; Poe Society, 1; Y.W.C.A., 1, 2, 3, 4; Young Democrat Club, 3; Alumni Daughters and Sons, 4.

MARY ALICE BLACKHAM

Wilmington, N. C.

English and French

Sigma Phi Alpha, 2, 3, 4; English Club, 2, 3, 4; Teco Echo Representative, 4; Commerce Club, 2; Y.W.C.A., 3; Emerson Society, 1, 2; Reporter for Teco Echo, 4.



VENNIE BLACKMON

Four Oaks, N. C.

Home Economics and Social Science

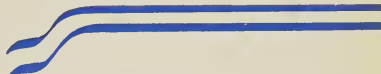
Y.W.C.A., 3, 4; Home Economics Club, 3, 4.

DOROTHY BONEY

Wallace, N. C.

Primary

W.C.U.N.C., 1; Cornelian Society, 1; Young Democrat Club, 2, 3; W.A.A., 2, 3; Poe Society, 2; Association of Childhood Education, 3, 4; Big Sister, 4.



Seniors



MARGARET BOONE
Rich Square, N. C.
Primary

Louisburg, 1; Y.W.C.A., 2, 3, 4; Young Democrat Club, 2, 3; Association of Childhood Education, 2, 3; Publicity Chairman, 4; Methodist Executive Council, 3, 4.

LYDIA MAE BOOTH
Spring Hope, N. C.
Home Economics



DOROTHY BOSWELL
Wilson, N. C.
Grammar

Y.W.C.A., 1, 2, 3, 4; W.A.A., 1, 2, 3, 4; Poe Society, 1, 2.

LOUISE BRETT
Como, N. C.
Grammar Grade
W.A.A., 1, 2, 3; Y.W.C.A., 3.



MARGARET BROUGHTON
Hertford, N. C.
Commerce and English

Junior Y Cabinet, 1; English Club, 2, 3, 4; Emerson Society, 2, 3, 4; Pieces of Eight Staff, 2.

RACHEL BROWN
Bethel, N. C.
Grammar
F.M.C., 1.

Seniors

MARGARET BYRUM
Edenton, N. C.

Home Economics and Science

Louisburg College. 1, 2; Lanier Society, 3.



LOIS CAIN
Fayetteville, N. C.

Grammar



DOROTHY CAINE
Roseboro, N. C.

Grammar

Emerson Society, 1, 2, 3, 4; W.A.A., 1, 2, 3; Y.
W.C.A., 2, 3, 4; Young Democrat Club, 2, 3, 4

ELLA CARAWAN
Swan Quarter, N. C.

Home Economics and Social Science

Home Economics Club, 1, 2, 3, 4; Secretary, 3;
Lanier Society, 3, 4; W.A.A., 1, 2, 3, 4; Science
Club, 2, 3, 4; Big Sister, 3.



ZALIA D. CAROWAN
Pantego, N. C.

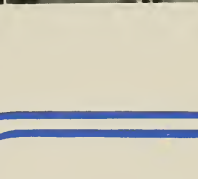
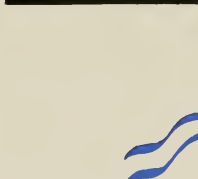
Primary

Junior Y Cabinet, 1; Y.W.C.A., 1, 2, 3, 4; Senior
Y Cabinet, 4; Lanier Society, 3, 4; Marshal, 4;
Association of Childhood Education, 2, 3, 4; Pub-
lication Representative, 4; Women's Student Gov-
ernment Association, 4; Delegate to Blue Ridge, 3.

MARGARET CASH
Wendell, N. C.

Grammar

Association of Childhood Education, 2, 4.



Seniors



SARA CAVANAUGH
Jacksonville, N. C.

Primary

Y.W.C.A., 1, 2, 3; W.A.A., 3, 4; Proctor, 3; Varsity Soccer, 3; Association of Childhood Education, 3, 4.



MARGARET CLINE
Shelby, N. C.

Home Economics and Social Science.

Mars Hill College, 1, 2; Home Economics Club, 3, 4; Y.W.C.A., 3; Pieces of Eight Circulation Manager.



EMILY ANN COLLINS
Nashville, N. C.

Primary and Music

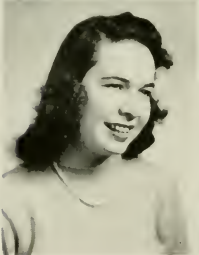
College Choir, 1; Woman's Glee Club, 2, 3, 4; College Band, 3, 4; College Orchestra, 4.



EVELYN CONYERS
Franklinton, N. C.

Grammar

Choir, 1; Young Democrat Club, 2, 3; Y.W.C.A., 1.



MELJONES COOPER
Warsaw, N. C.

Grammar

Campbell College, 1, 2; Young Democrat Club, 3, 4; Association of Childhood Education, 4.



WILLIE COPELAND
Ahoskie, N. C.

Grammar

Seniors

LEONA COUNCIL

Cameron, N. C.

Home Economics and Science



LA VERNE COX

Winterville, N. C.

English

LUCILLE COX

Robersonville, N. C.

Commerce and Music

Glee Club, 1, 2, 3; Orchestra, 2; Band, 3; Young Democrat Club, 1; Woman's Student Government Association, Summer, 3.



MARGARET COX

Winterville, N. C.

Primary

Young Democrat Club, 2; Association of Childhood Education, 4.

SAMUEL H. CRANDELL

Stokes, N. C.

Physical Education and History

Y.M.C.A., 1, 2, 3, 4; Secretary, 2; Vice-President, 3; President, 4; Teco Echo Class Representative, 1, 3; Young Democrat Club, 3; Varsity Basketball, 2, 3; Varsity Baseball, 2, 3, 4; Varsity Club, 4; Alumni Daughters and Sons Club, 4; Social Committee, 4; Opella Choir, 1, 2, 3; Blue Ridge Conference, 4; Senior Superlative, 4; Who's Who Among Students in American Colleges and Universities.



MIRIAM CREW

Pleasant Hill, N. C.

Primary

Y.W.C.A., 1, 4; Association of Childhood Education, 3, 4; M.S.A. Council, 1; Lanier Society, 3, 4.

Seniors



BLANCHE CRISP
Oak City, N. C.

Home Economics and Science

Home Economics Club, 4; Emerson Society, 3, 4; House President, Summer, 3; Emerson Marshal, 4; Louisburg College, 1, 2.



MIRIAM CRITCHER
Oxford, N. C.

Primary

Mars Hill College, 1, 2; Association of Childhood Education, 3, 4.



MARGARET CROCKER
Grover, N. C.

Home Economics and Science

Home Economics Club, 2, 3, 4; Science Club, 2, 3, 4; W.A.A., 1, 2, 3; Y.W.C.A., 3, 4.



CLELLIE MAE CROOM
Youngville, N. C.

Home Economics and Science

Home Economics Club, 2, 3; Science Club, 2; Young Democrat Club, 3; Y.W.C.A., 2, 3; Emerson Society, 3, 4.



ETHEL CROOM
Ayden, N. C.

Grammar

Mars Hill College, 1; Association of Childhood Education, 4.



JANE CURRIN
Oxford, N. C.

Commerce

Junior Y Cabinet, 1; Y.W.C.A., 1, 2; Commerce, 1, 2; Women's Student Government Association, 2; President, Summer, 3; Social Committee, 2, 3; Chairman of Social Committee, 4; Class Representative to TECOAN, 4; Who's Who Among Students in American Colleges and Universities.

Seniors

BEATRICE HELMS DANIELS

Monroe, N. C.

Grammar

Y.W.C.A., 1, 2, 3; Poe Society, 1, 2; Young Democrat Club, 2, 3; Association of Childhood Education, 3, 4; Future Teachers of America, 3.



NANCY DARDEN

Hertford, N. C.

Grammar

Emerson Society, 1, 2, 3; Marshal, 2; International Relation Club, 3; Social Committee, 4; Y.W.C.A., 1, 2, 3, 4; Future Teachers of America, 2, 3; Association of Childhood Education, 2, 3, 4; Young Democrat Club, 2, 3; Band, 3; Glee Club, 3.

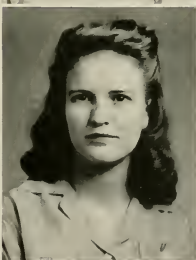


ESTELLE DAVIS

Seaboard, N. C.

Grammar

Class Vice-President, 1, Secretary, 2; TECOAN Staff, 2; President Lanier Society, 2; Vice-President Women's Student Government Association, 3; President, 4; Y.W.C.A. Cabinet, 4; W.A.A., 1; Young Democrat Club, 1, 2; Who's Who Among Students in American Colleges and Universities.



MARJORIE GRAHAM DAVIS

Wilmington, N. C.

Primary

Women's Student Government Association, 3; Vice-President Senior Class, 4; Reporter Teen Echo, 2; Associate Editor, 3; Secretary Young Democrat Club, 3; Vice-President, 4; Delegate to Student Legislature, 3, 4; Associate Editor Pieces of Eight, 4; Proctor, 4; Choir, 2; Y.W.C.A., 4; Association of Childhood Education, 4.

ELIZABETH DAWSON

Kinston, N. C.

Primary

Y.W.C.A., 1, 2, 3, 4; Lanier Society, 3, 4; W.A.A., 1, 2, 3; Young Democrat Club, 2, 3; Association of Childhood Education, 1, 2, 3, 4; Vice-President, 4; M.S.A., 1, 2, 3, 4.

ANNIE LAURIE DENNING

Benson, N. C.

Grammar

Poe Society, 1; Association of Childhood Education, 2, 4.

Seniors



MILDRED DEWAR
Fuquay Springs, N. C.
Home Economics and Science

Lanier Society, 1, 2, 3, 4; Science Club, 1, 2, 3, 4; Publicity Chairman, 4; Home Economics Club, 1, 2, 3, 4.

GRACE DRAUGHON
Dunn, N. C.
Home Economics and Science

Campbell College, 1, 2; Home Economics Club, 1, 2, 3, 4; Science Club, 3, 4.



GENEVE DRUM
Newton, N. C.
English and Social Science

Emmanuel College, 1, 2; Y.W.C.A., 3; Jarvis Forensic Club, 3, 4; English Club, 3, 4.

JOYCE DUNHAM
Wilmington, N. C.
French and English

Y.W.C.A., 1, 2; Junior Y Cabinet President, 1; English Club, 1, 2, 3, 4; Phi Sigma Chapter, 2, 3, 4; Secretary-Treasurer, 3; President, 4; Treasurer of Women's Student Government Association, 2; Associate Editor Handbook, 3; Class President, 3, 4; Student-Faculty Relationship Committee, Entertainment Committee, 4; Senior Superlative; Who's Who Among Students in American Colleges and Universities.

JANIE EAKES
Greenville, N. C.
Commerce and English

Poe Society, 1; Class Secretary, 1; President, 2; Chi Pi Players, 1, 2, 3; Secretary, 2; Contest Play, 2; Young Democrat Club, 1, 2, 3; English Club, 1, 2; Commerce Club, 1, 2, 3; Delegate Student Legislature, 2; Associate Editor of *TECOAN*, 2; Editor-in-Chief, 3; Publication Board, 3; Secretary, 3; Senior Superlative; Who's Who Among Students in American Colleges and Universities.



DOROTHY EDGE
Hope Mills, N. C.
Primary

Louisburg College, 1, 2; Association of Childhood Education, 3, 4; Y.W.C.A., 3, 4.

Seniors

LINA EDWARDS

Fountain, N. C.

Social Science and Home Economics



FRANCES ELLIOTT

Oxford, N. C.

Grammar

Y.W.C.A., 2, 4; W.A.A., 3; Jarvis Forensic Club, 3, 4. Secretary, 4.

VIRGINIA ENGLISH

Willard, N. C.

Home Economics and Science



ADMINTA EURE

Eure, N. C.

Primary

Poe Society, 1, 2, 3, 4; Marshal, 4, Y.W.C.A., 1, 2, 3, 4; Cabinet, 3, 4; Young Democrat Club, 1, 2, 3, 4; Association of Childhood Education, 1, 2, 3, 4; Executive Board, 3; Social Committee, 4; Superlative, 4; Class Secretary, 4; Who's Who in American Colleges and Universities.

JANE FISHER

Clinton, N. C.

Home Economics and Science

W.C.U.N.C., 1, 2; Emerson Society, 3, 4; Home Economics Club, 3, 4.



LEAH ELIZABETH FLEMING

Pikeville, N. C.

Home Economics and Science

W.C.U.N.C., 1; Home Economics Club, 2, 3, 4; Science Club, 2, 3, 4; Vice-President, 3; Glee Club, 3, 4; Y.W.C.A., 2, 3, 4; Baptist Student League, 3, 4; President, 3.

Seniors



MARTHA RACHEL FLEMING
Grimesland, N. C.

Commerce and English

W.C.U.N.C. 1; Poe Society. 1; Chi Pi. 1; Young Democrat Club, 1.

MARY LONG FORD
Franklinton, N. C.

Home Economics and Science

Y.W.C.A. 1, 2, 3, 4; Cabinet, 3, 4; Poe Society, 1, 2, 3, 4; Home Economics Club, 1, 2, 3, 4; Science Club, 1, 2, 3, 4; Vice-President Class, 3; M.S.A., 1, 2, 3, 4; Cabinet, 3; W.A.A., 1, 4; Young Democrat Club, 1, 2; Tecu Echo Business Staff, 2; Who's Who in American Colleges and Universities.



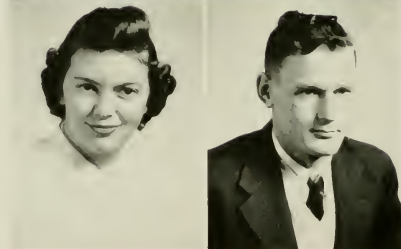
Z. W. FRAZELLE
Richlands, N. C.

Commerce and Mathematics

M.S.A., 1, 2, 3; Treasurer, 2, 3; Commerce Club, 1, 2, 3; Vice-President, 2; Treasurer, 3; Class Vice-President, 1, 2; M.S.G.A. Secretary-Treasurer, 2; Y.M.C.A., 1, 2, 3; Young Democrat Club, 1, 2, 3; Math Club, 1, 2, 3; Tecu Echo Reporter, 2; Phi Sigma Pi, 3.

MIRIAM FREEMAN
Ahoskie, N. C.

Grammar



MARY BECTON GASKINS
New Bern, N. C.

Science and Home Economics

RICHARD OCTAVIUS GAULDIN
Warfield, Va.

Science and Physical Education

Brevard Junior College, 1, 2; Baseball, 3, 4; Y. M.C.A., 4; Varsity Club, 4.

Seniors

MAE GILLIAM
Louisburg, N. C.

Home Economics and Science

Science Club, 2, 3, 4; Home Economics Club, 2, 3, 4.



AGATHA GOLDEN
Beaufort, N. C.

Commerce and Social Science

GWENDOLYN GOODSON
Mebane, N. C.

Primary and Music

Band, 3, 4; Glee Club, 3, 4; B.S.U. Council, 2; Association of Childhood Education, 4; Junior Y Cabinet, 1.



VIRGINIA GRAY
Rocky Mount, N. C.

Primary

DORIS GREENE
Council, N. C.

Grammar

Montreat College, 1, 2; Association of Childhood Education, 3, 4.

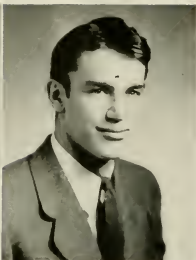


LOIS GREENE
Robersonville, N. C.

Home Economics and Science

Home Economics Club, 1, 2, 3, 4; Band, 1, 2; Poe Society, 3, 4; Entertainment Committee, 4.

Seniors



MARGARET GREENE
Clyde, N. C.
English and Social Science

WILLIAM GREENE
Crossnore, N. C.
Commerce and Physical Education

Chi Pi Players, 3, 4; Varsity Basketball, Football; Varsity Club, 3, 4; President, 4; Easter Pageant, 3, 4; Brevard College, 1, 2; Senior Superlative



EUGENIA GREGORY
Hertford, N. C.
Primary

Chowan Junior College, 1, 2; Association of Childhood Education, 3, 4; B.S.U. Council, 3; Y.W.C.A., 3, 4; Poe Society, 3.

EVAN GRIFFIN
Williamston, N. C.
History and English

Men's Student Government Association, 3, 4; President, 4; Phi Sigma Pi Fraternity, 2, 3, 4; Secretary, 3, 4; Chi Pi Players, 3, 4; Assistant Business Manager Pieces of Eight, 3; Teo Echo, 4; International Relations Club, 3, 4; Young Democrat Club, 2, 3, 4; Y. M. C. A., 3, 4; Entertainment Committee, 4; Who's Who Among Students in American Colleges and Universities.



LULA GUPTON
Louisburg, N. C.
Home Economics and Science

JUSTINE GURLEY
Goldsboro, N. C.
Primary

Campbell College, 1; Association of Childhood Education, 2; W.A.A., 2, 4; Varsity Basketball, 3; Y.W.C.A., 2.

Seniors

RUTH HALL

Woodsdale, N. C.

Physical Education and Social Science

Commerce Club, 1; Lanier Society, 2, 3, 4; Y.W. C.A., 2, 3; B.S.U. Council, 3; W.A.A., 1, 2, 3, 4; Varsity Basketball, 1, 2; Varsity Hockey, 2, 3, 4; Varsity Soccer, 2, 3.



VERA HAMILTON

Sea Level, N. C.

Grammar and Music

Glee Club, 2; Jarvis Forensic Club, 3; Orchestra, 4.



ELIZABETH HARRELL

Powellville, N. C.

Primary

JEAN HARRIS

Youngsville, N. C.

English and History

Y.W.C.A., 1, 2; Young Democrat Club, 2, 3; Emerson Society, 3, 4; English Club, 2, 3.



ELSIE HATSELL

Swansboro, N. C.

Home Economics and Science

Home Economics Club, 2, 3; Young Democrat Club, 2; W.A.A., 1, 2.

CHRISTINE HERRING

Goldsboro, N. C.

Home Economics and Science

Brevard College, 1, 2; Science Club, 3, 4; Home Economics Club, 3, 4; W.A.A., 3, 4.

Seniors



EUNICE HERRING

Rose Hill, N. C.

Commerce and Physical Education

Poe Society, 1; Young Democrat Club, 3, 4; Commerce Club, 2, 3; W.A.A., 1, 2, 3, 4; Varsity Basketball, 1, 2, 3, 4; Volley Ball, 1, 2, 3, 4; Softball, 2, 3; Hockey, 3, 4; Soccer, 3.

CAROLINE HINES

Turkey, N. C.

Home Economics and Science

Home Economics Club, 1, 2, 3, 4; 4-H Club, 3, 4; Poe Society, 1, 2, 3, 4.



NORMA HODGES

Washington, N. C.

Primary

Glee Club, 1, 2, 3, 4; Association of Childhood Education, 2, 3, 4; Young Democrat Club, 2, 3, 4; Alumni Daughters and Sons Club, 3, 4; Senior Superlative, 4.

KATHRYNE HOLDER

Windsor, N. C.

Primary

W.C.U.N.C., 1; Young Democrat Club, 2, 3, 4; W.A.A., 2; Association of Childhood Education, 2; Latier Society, 2, 3.



VIRGINIA HOLLOMAN

Stantonsburg, N. C.

English and Social Science

Emmanuel College, 1, 2; Y.W.C.A., 4.

MARGIE HOLLOWELL

Goldsboro, N. C.

Home Economics and Science

W.C.U.N.C., 1; Home Economics Club, 2, 3, 4.

Seniors

VIOLET HOPSON
Durham, N. C.

Home Economics and Science

Home Economics Club, 2, 3, 4; Science Club, 2, 3, 4; W.A.A., 3; Y.W.C.A., 3, 4; Lanier Society, 4.



LORRAINE HORNE
Burgaw, N. C.

Home Economics and Science

Y.W.C.A., 1, 2, 3, 4; Home Economics Club, 1, 2, 3, 4; W.A.A., 1, 2, 3, 4; Science Club, 2, 3, 4; Poe Society, 1, 2; Proctor, 3; Women's Student Government Association, 4.



PEARL HOUSE
Hobgood, N. C.

Commerce and Physical Education

Lanier Society, 1, 2; Y.W.C.A., 2, 3; Young Democrat Club, 2, 3; Commerce Club, 2, 3, 4; Alpha Iota Sorority, 2, 3, Vice-President, 4; Head of Intramural Basketball, 3; Varsity Basketball, 2, 3, 4; Volley Ball, 2, 4; Softball, 1, 2, 3; Hockey, 2, 3; Senior Superlative, 4.

GRACE HUMBLES
Farmville, N. C.

Home Economics and Science

Y.W.C.A., 1, 2, 3, 4; Young Democrat Club, 2, 3, 4; Proctor, 4; Marshal, 2.



BESSIE FAYE HUNT
Wilmington, N. C.

Mathematics, Commerce and English

Mathematics Club, 1, 2, 3, 4; Secretary, 2; President, 4; W.A.A., 1; Y.W.C.A. Cabinet, 2, 3, 4; Women's Student Government Association, 3; Secretary, 3; Easter Pageant, 2, 3; Student-Faculty Relationship Committee, 4; Chairman Consultation Committee, 4; Zeta Delta Chapter of Alpha Iota, 3, 4; Senior Superlative; Who's Who Among Students in American Colleges and Universities.

CLONNIE HUSKINS
Burnsville, N. C.

Home Economics and Science

Asheville College, 1, 2; Y.W.C.A., 3, 4; Home Economics Club, 3, 4; Young Democrat Club, 3, 4; Y.W.C.A., 4.

Seniors



CLAIRE JENKINS
Hobgood, N. C.
Commerce and English

W.A.A., 1, 2, 3, 4; Teco Echo Representative, 4; Alpha Iota Sorority, 2, 3, 4; Historian, 3; President, 4; Y.W.C.A., 2, 3; Young Democrat Club, 2, 3, 4; Lanier Society, 1; Commerce Club, 1, 4; English Club, 2.



ELEANOR JENKINS
Aulander, N. C.
Home Economics and Science
Chowan College, 1, 2; Home Economics Club, 3, 4.

LOUISE JENNINGS
Elizabeth City, N. C.
Primary
Association of Childhood Education, 1, 2, 3, 4; Y.W.C.A., 1, 2; Y.W.A., 1.

LINA PEARL JOHNSON
Benson, N. C.
Primary

Poe Society, 1; W.A.A., 1; Y.W.C.A., 1; Association of Childhood Education, 1; Young Democrat Club, 2.



MARGARET JOHNSON
Fairmont, N. C.
Home Economics

Y.W.C.A., 1, 2, 3, 4; Young Democrat Club, 2, 3; Circulating Manager Pieces of Eight, 2, 3; Poe Society, 1, 2, 3, 4; W.A.A., 1, 2; Home Economics Club, 1, 2, 3, 4; Science Club, 1, 2, 3, 4.

MARY TYSOR JOHNSON
Stedman, N. C.
English and Social Science

Seniors

GRACE JONES

Marshallberg, N. C.

English and History

English Club 2, 3, 4; International Relations Club,
3, 4; Pieces of Eight Staff, 3, Associate Editor, 4.



MAE KNOTT

Farmville, N. C.

Commerce and History



KATHERINE KYZER

Greenville, N. C.

Primary

DORIS LAMM

Lucama, N. C.

Mathematics and Science

Mathematics Club, 1, 2, 3, 4; Science Club, 2, 3,
4; Y.W.C.A., 3; W.A.A., 1, 2, 3.



MADGE LANE

Winfall, N. C.

French and History

Sigma Pi Alpha, 2, 3, 4; International Relations
Club, 3, President, 4

JEWELL LANGLEY

Rocky Mount, N. C.

Home Economics and Science

Science Club, 2, 3, 4, Vice-President, 3; 4-H Club,
3, 4, Secretary, 3, Treasurer, 4; Home Economics
Club, 2, 3, 4; Teeco Echo Representative, 3; Poe
Society, 2, 3; W.A.A., 2, 3, 4; Young Democrat
Club, 1, 2, 3, 4; Y.W.C.A., 1.

Seniors



FRANCES LEGGETT
Hobgood, N. C.

Physical Education and English

W.A.A., 1, 2, 3, 4, Head of Field Hockey, 3; Softball, 4; Young Democrat Club, 3; Lanier Society, 1.



MARY LOUISE LINDSAY
Fayetteville, N. C.

Physical Education and Social Science

Emerson Society, 1, 2; Young Democrat Club, 3; W.A.A., 1, 2, 3, 4, Vice-President, 3, President, 4, Varsity, 1, 2, 3, 4; Proctor, 1; Social Committee, 4.



NAN LOVELACE
Macesfield, N. C.

Primary

Secretary Junior Y, 1; Emerson Society, 1, 2, 3, 4; Association of Childhood Education, 2, 3; Y.W.C.A., 1, 2, 3, 4.



WALTER MALLARD
Trenton, N. C.

Science

Chi Pi Players, 1, 2, 3, 4; Senior Play; Senior Superlative; Easter Pageant, 3, 4.



HILDA MARTIN
Conway, N. C.

English and Foreign Language

Phi Sigma Fraternity, 2, 3, 4; Teco Echo Reporter, 3; Poe Society, 1; Emerson Society, 3, 4, President, 4; Marshal, 4; English Club, 2, 3, 4; Chi Pi Players, 2, 3; Y.W.C.A., 1, 2; Young Democrat Club, 4; Y.W.C.A. Social Chairman, 2.



DOROTHINE MASSEY
Pleasant Hill, N. C.

Primary

Lanier Society, 1, 2, 3, 4, Secretary, 3, Vice-President, 4; Glee Club, 1, 2, 3, 4; Band, 1, 2, 3, 4, Vice-President, 3; Y.W.C.A., 3, 4, Association of Childhood Education, 3, 4; Proctor, 3; M.S.A., 1, 2, 3, 4, Cabinet, 2; Who's Who Among Students in American Colleges and Universities.

Seniors

HELEN MASSEY

Pleasant Hill, N. C.

Grammar

Lanier Society, 1, 2, 3, 4. Marshal, 4. Association of Childhood Education, 3, 4. Corresponding Secretary, 4; Y.W.C.A., 1, 4; Student Government Association, 4; TECOAN Representative of Senior Class; Who's Who Among Students in American Colleges and Universities.



ELIZABETH MATTHEWS

Murfreesboro, N. C.

English and Social Science

Chowan College, 1, 2; Y.W.C.A., 3, 4; English Club, 3, 4.



MILDRED FAY MAXWELL

Brevard, N. C.

Primary

Brevard College, 1, 2; Y.W.C.A., 3, 4; Lanier Society, 3, 4; Choir, 3, 4.

NORMAN MAYO

Plymouth, N. C.

Physical Education and Social Science

Superlative; Varsity Club, 1, 2, 3, 4; Varsity Baseball, 1, 2, 3, 4; Football, 1, 2, 3, 4.

ZELEIAMA MEDLIN

Bunn, N. C.

French and History



ARLINE MERCER

Black Creek, N. C.

Primary

Y.W.C.A., 1, 2, 3, 4; Poe Society, 1; Lanier Society, 3, 4; Young Democrat Club, 2, 3; Association of Childhood Education, 2, 3, 4; M.S.A., 1, 2, 3, 4; Cabinet, 1, 2, 3; First Vice-President, 3; College 4-H Club, 3, 4; Reporter, 4; Alumni Daughters and Sons, 1, 2, 3, 4; President, 3, 4; Women's Student Government Association, 4; Who's Who in American Colleges and Universities.

Seniors



WINIFRED MERCER

Wilson, N. C.

Home Economics and Science

Young Democrat Club, 2, 3; Y.W.C.A. 1; Lanier Society, 1, 2, 3, 4; Marshal, 3; Home Economics Club, 1, 2, 3, 4; Women's Student Government Association, 2.

AILINE MEWBORN

Snow Hill, N. C.

Home Economics and Science



CAROLINE MILES

Henderson, N. C.

Primary

Y.W.C.A. 1, 2, 3, 4; Junior Y Cabinet, 1; Baptist Representative to Y Cabinet, 4; Poe Society, 1, 2, 3, 4; B.S.U., 1, 2, 3, 4; Cabinet, 4; Association of Childhood Education, 2, 3, 4; Vice-President, 3; President, 4; Young Democrat Club, 1, 2, 3; W.A.A., 1, 2.

BEN MILLER

Greenville, N. C.

Science and English

Y.M.C.A. 1, 2, 3, 4; Cabinet, 3; Chl Pi Players, 3, 4; Young Democrat Club, 1, 2, 3, 4; Tennis Team, 3.



MILDRED MITCHELL

Trottsville, N. C.

Grammar

CLELLIE MIZELLE

Enfield, N. C.

Grammar

Young Democrat Club, 1, 2, 3; Lanier Society, 2, 3; Jarvis Forensic Club, 2, 3; Proctor, 3.

Seniors

REBECCA MOYE

Bunn, N. C.

Grammar

Y.W.C.A., 3, 4.



HELEN MOZINGO

Selma, N. C.

History and Science

LOUISE MURPHY

Louisburg, N. C.

Home Economics and Science

Louisburg College, 1, 2; Home Economics Club, 3, 4; Science Club, 4.



DOROTHY BALLENTINE MCCLURE

Clarkton, N. C.

Home Economics and Science

"Big Sister," 4; House President of Women's Student Government Association, 3; Science Club, 2, 3, 4; Home Economics Club, 1, 2, 3, 4; Reporter, 4; Y.W.C.A., 1, 2, 4; Junior Class TEOCAN Representative, 3; Young Democrat Club, 2; P.S.A. Council, 2.

NELL MCCULLEN

Lakeland, Fla.

Math and Commerce

Math Club, 1, 2, 3, 4; Commerce Club, 1, 2, 3, 4; Emerson Society, 1, 2, 3, 4; Vice-President, 2; President, 3; Marshal, 2, 3, 4; W.A.A., 1, 2, 3, 4; Secretary, 3; House President, 3; Alpha Iota Sorority, 2, 3, 4; Marshal, 4; Superlative.

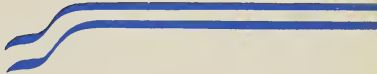


VIRGINIA MCGEE

Monroe, N. C.

Commerce and English

Commerce Club, 1, 2, 3, 4; Teo Echo Representative, 3; English Club, 2, 3, 4; Y.W.C.A., 1, 2, 3, 4; Y Cabinet, 1; Young Democrat Club, 1, 2, 3, 4; W.A.A., 2; Poe Society, 1, 2, 3; Future Teachers of America, 2.



Seniors



MAVIS MCGOWAN
Greenville, N. C.

Grammar

Louisburg College. 1, 2; Association of Childhood Education. 4; Y.W.C.A., 3, 4.



EUNICE MCKEITHAN
Roseboro, N. C.

Home Economics and Science

Western Carolina Teachers College. 1; Home Economics Club. 2, 3, 4; Science Club. 2, 3, 4; W.A.A., 2, 3; Y.D.C., 3.



REID MCLAWHORN
Winterville, N. C.

History and Mathematics



LUCILLE NELMS
Oxford, N. C.

Grammar



ZULA NEWMAN
Clinton, N. C.

French and Physical Education

Phi Sigma. 2, 3, 4; W.A.A., 1, 2, 3, 4; Emerson Society. 1, 2, 3, 4; Secretary. 3; Varsity Softball. 3; Young Democrat Club. 1.



MELBA ODEN
Hatteras, N. C.

Grammar

Y.W.C.A., 1, 2, 3; Association of Childhood Education. 1, 2, 3; W.A.A., 2; Future Teachers of America, 1, 2; Treasurer, 3.

Seniors

ELIZABETH PAGE

Burgaw, N. C.

Primary

Y.W.C.A., 2, 3, 4; Young Democrat Club, 3; Association of Childhood Education, 2, 3, 4; College Choir, 3, 4; M.S.A., 1, 2, 3, 4; M.S.A. Council, 4; "Big Sister", 4.



JESSIE MAE PAGE

Cameron, N. C.

Grammar

Montreat College, 1, 2; W.A.A., 3; Association of Childhood Education, 3, 4.



ESTHER MAE PARKER

George, N. C.

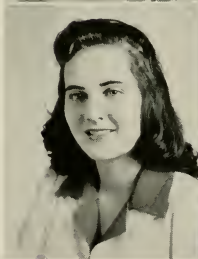
Physical Education and Commerce

W.A.A., 1, 2, 3, 4; Cabinet, 1, 2, 3, 4; Varsity Field Hockey, 1, 2, 3, 4; Soccer, 1, 2, 3, 4; Basketball, 1, 2; Volley Ball, 1, 2, 3, 4; Softball, 1, 2, 3, 4; Tennis, 1, 2, 3, 4; Commerce Club, 3, 4; Alpha Iota Sorority, 3, 4; Y.W.C.A., 2, 3.

MARY JOHN PARKER

Clinton, N. C.

Commerce



SUE PARKER

Pollockville, N. C.

Home Economics and Social Science

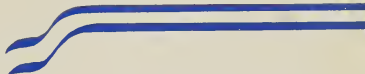
Home Economics Club, 1, 2, 3, 4; Secretary, 2; Vice-President, 3; Lanier Society, 1, 2, 3, 4; TEOGAN Representative, 3; 4-H Club, 2, 3, 4; Vice-President, 3; W.A.A., 1, 2, 3, 4; Dormitory Head, 2; Head of Volley Ball, 3; House President, 3; Secretary of Women's Student Government Association, Summer; Y.W.C.A., 3, 4; Science Club, 2, 3, 4; "Big Sister," 3.

JOYE IRENE PARNELL

Fayetteville, N. C.

Home Economics and Science

Home Economics Club, 1, 2, 3, 4; Science Club, 1, 2, 3, 4; Y.W.C.A., 1, 2, 3; Junior Y Cabinet, 1; W.A.A., 1, 2, 3; B.S.U. Council, 2, 3; Y.W.A. Officer, 1, 2; Foe Society, 2, 3.



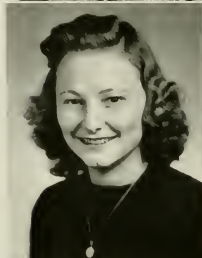
Seniors



MARTHA PARROTT
Goldsboro, N. C.
English and Social Science

HELEN PEACOCK
Parkton, N. C.
Primary

Class Treasurer, 2; Y.W.C.A., 1, 2; Student Government Representative, 3; Women's Student Government Association, 4.



ELIZABETH PEAL
Creswell, N. C.
Home Economics and Social Science

St. Mary's College, 1, 2; Lanier Society, 3, 4; W.A.A., 3; Young Democrat Club, 3; Home Economics Club, 3.

MARIE PENUEL
Princeton, N. C.
Home Economics and Science

Guilford College, 1; Science Club, 2, 3, 4; 4-H Club, 2, 3, 4; Home Economics Club, 2, 3, 4; Young Democrat Club, 3; Y.W.A., 2; Y.W.C.A., 4.



ELLEN PIERCE
Sunbury, N. C.
Primary
Association of Childhood Education, 1, 2.

DALE PITTS
Creedmoor, N. C.
Primary
W.A.A., 3; Association of Childhood Education, 3, 4; Methodist Student Cabinet, 2, 3, 4.

Seniors

AULENE POWELL
Denton, N. C.

Home Economics and Science

Brevard College, 1, 2; Home Economics Club, 4; Y.W.C.A., 4.



ANNE POYTHRESS
Henderson, N. C.

Primary

Y.W.C.A., 1, 2, 3, 4, Junior Y Cabinet, 1; W.A.A., 1; Poe Society, 1, 2, 3, 4, President, 4; Marshal, 4; Assistant Business Manager of TECOAN, 2; Associate Editor, 4, Business Manager, 3; Association of Childhood Education, 1, 2, 3, 4; Executive Board, 3; Young Democrat Club, 2; B.S.U., 1, 2, 3, 4; Who's Who Among Students in American Colleges and Universities.



OVELIA PRICE
Selma, N. C.

Home Economics and Science

Home Economics Club, 1, 2, 3, 4, Treasurer, 3; Science Club, 1, 2, 3, 4.

BOBBIE LORRAINE PRITCHARD
Seaboard, N. C.

Music

Lanier Society, 1, 2, 3, 4, Marshal, 2, Treasurer, 3; Glee Club, 1, 2, 3, 4; Band, 1, 2, 3, 4; Class Representative to TECOAN, 2; Entertainment Committee, 4; Chief Marshal, 4; Proctor, 2, 4; Who's Who Among Students in American Colleges and Universities.



KATIE RAGAN
New Hill, N. C.

Grammar

Future Teachers of America, 1, 2; Poe Society, 1, 2.

HAZEL RAPER
Wilson, N. C.

Physical Education and History

W.A.A., 2, 3, 4, Cabinet, 3, 4; Head of Archery, 4; Y.W.C.A., 3; Varsity Soccer, 3; International Relations Club, 4.

Seniors



HENRIETTA E. RAY
Buckner, N. C.
Home Economics and Science

Poe Society, 1, 2; Home Economics Club, 1, 2;
Science Club, 1, 2.

ADELAIDE READE
Burgaw, N. C.
Grammar

Y.W.C.A., 2, 3; Young Democrat Club, 3; Lanier
Society, 1, 2, 3, 4; Treasurer, 2; TECOAN Busi-
ness Staff, 2; P.S.A., 1, 2, 3, 4; President, 4.



MARGARET WADE REED
Elizabeth City, N. C.
Grammar

Junior Y Cabinet, 1; Lanier Society, 1, 2, 3, 4.
Vice-President, 3; Young Democrat Club, 2; Teco
Echo Reporter, 1.

DAPHNE REES
McLeansville, N. C.
Grammar



BEATRICE REYNOLDS
Kinston, N. C.
English and Social Science

Phi Sigma Chapter of Sigma Pi Alpha, 1, 2, 3,
4; Y.W.C.A., 2; English Club, 2, 3, 4; Secretary,
4.

IRMA RHODES
Whiteville, N. C.
Home Economics and Science

Campbell College, 1, 2; Home Economics Club,
3, 4; Science Club, 3.

Seniors

CAROLINE RICHARDSON
Wendell, N. C.

Grammar

Class Secretary, 1; Vice-President Junior Y Cabinet, 2; Y.W.C.A., 1, 2, 3, 4; Emerson Society, 3, 4; Association of Childhood Education, 1, 2, 3, 4; Young Democrat Club, 3, 4.



SARA RICHARDSON
Wendell, N. C.

Primary

Peace Junior College; Young Democrat Club, 2, 3, 4; Lanier Society, 3, 4; Association of Childhood Education, 3, 4; Proctor, 4.



BETSY RIDDICK
Gates, N. C.

Science and English

VIRGINIA RIDDLE
Saint Pauls, N. C.

Primary



MAGGIE PEARL RIVENBARK
Wallace, N. C.

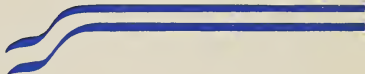
Primary

Y.W.C.A., 1, 2; Young Democrat Club, 2, 3; Association of Childhood Education, 3, 4; W.A.A., 3.

FLORENCE ROBERTSON
Colerain, N. C.

English and Social Science

Chowan Junior College, 1, 2; English Club, 3, 4; B.S.U. Council, 4; Y.W.C.A., 4.



Seniors



FRANCES ROBERTSON
Tarboro, N. C.
History and English

MOZELLE ROGERS
Wake Forest, N. C.
Grammar

Y.W.C.A. 1, 4, Association of Childhood Education, 4; Foe Society, 4; Home Economics Club, 1.



RUSSELL ROGERSON
Greenville, N. C.
History

Chi Pi Players, 1, 2, 3, 4; Contest Play, 3; Varsity Football, 1, 2, 3, 4; Basketball, 1, 2, 3, 4; International Relations Club, 2, 4; Phi Sigma Pi, 4; Varsity Club, 2, 3, 4; Secretary-Treasurer, 4.

RANDOLPH ROPER
Bath, N. C.
Commerce and Mathematics

Varsity Club, 4; Young Democrat Club, 4; Y.M.C.A., 4.



GRACE ROSS
Aurora, N. C.
Primary

Junior Y Cabinet, 1; Y.W.C.A., 1, 2, 3, 4; Senior Y Cabinet, 2, 3, 4; Foe Society, 2; Association of Childhood Education, 1, 2, 3, 4; Women's Student Government Association, 3; Delegate to Blue Ridge, 2; Delegate to National Y.W.C.A. Assembly at Oxford, Ohio; Who's Who Among Students in American Colleges and Universities.

JULIA DEAN SANDLIN
Beulaville, N. C.
Primary

Seniors

FRANCES SEARS
Apex, N. C.

English and Social Science

Freshman Play, 1; Y.W.C.A., 2, 3; Young Democrat Club, 2, 3; Poe Society, 1, 2, 3; English Club, 3, 4; "Big Sister," 4.



MIRIAM GRACE SEXTON
Rocky Mount, N. C.

Primary

Campbell College, 1, 2; Association of Childhood Education, 3, 4; Y.W.C.A. Cabinet, 3; B.S.U., 3; Glee Club, 3, 4.

MARY ELLEN SHAW
Mebane, N. C.

Primary

Louisburg, 1, 2; Association of Childhood Education, 3, 4; Y.W.C.A., 3, 4.



CHARLOTTE SHEARIN
Rocky Mount, N. C.

Grammar

Y.W.C.A., 1, 2, 3, 4; Secretary, 2; Vice-President, 3; President, 4; Junior Y Cabinet, 1; Future Teachers of America, 2, 3, 4; Vice-President, 2; President, 3; Poe Society, 1, 2, 3; Vice-President, 3; B.S.U. Council, 2, 3; Who's Who Among Students in American Colleges and Universities.

METSEL SIMMONS
Columbia, N. C.

Commerce and Mathematics

Y.M.C.A., 1, 2, 3, 4; Men's Student Government Association, 2, 3, 4; Young Democrat Club, 1, 2, 3, 4; Treasurer, 3; President, 4; Business Staff TECOAN, 4; Who's Who Among Students in American Colleges and Universities.



ALICE READ SMITH
Fairmont, N. C.

English and Social Science

Mars Hill Junior College, 1, 2; Treasurer of English Club, 3, 4; Young Democrat Club, 3, 4.

Seniors



LIZZIE CAROLINA SMITH

Raleigh, N. C.

Home Economics and Social Science

Home Economics Club, 3, 4; Young Democrat Club, 3, 4; Poe Society, 3, 4; Y.W.C.A., 3, 4; Lousburg Junior College, 1, 2.

FRANCES BLACK SOUTHERLAND

Burgaw, N. C.

Music and Primary

Peace College, 1, 2; Women's Chorus, 3, 4; Association of Childhood Education, 3, 4; M.S.A., 3, 4; Lanier Society, 3; Y.W.C.A., 3; Opera Martha, 4.



MARION STALLINGS

Jamesville, N. C.

Home Economics and Science

Young Democrat Club, 1; Home Economics Club, 2, 3, 4; Science Club, 2, 3, 4; W.A.A., 2, 3, 4.

RUTH STALLINGS

Hobbsville, N. C.

Home Economics and Science

Lousburg, 1, 2; Home Economics Club, 3, 4; Science Club, 3, 4; Emerson Society, 3, 4.



DOROTHY STARLING

Clinton, N. C.

Primary

Emerson Society, 3, 4; Association of Childhood Education, 3, 4; Pineland Junior College, 1, 2.

INEZ STEPHENSON

Angier, N. C.

Home Economics and Science

Seniors

EVELYN BELL STEWART

Windsor, N. C.

Primary

Choir, 3, 4; President, B.S.U., 4.



THELMA STEWART

Buie's Creek, N. C.

Mathematics and English

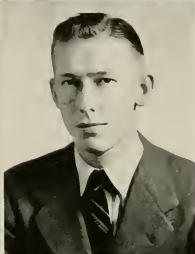
Campbell College, 1, 2; Mathematics Club, 3, 4; English Club, 3; Y.W.A., 3, 4, Social Chairman, 4; Young Democrat Club, 4; W.A.A., 4.

GRACE TAYLOR

Pink Hill, N. C.

Science and Home Economics

Y.W.C.A., 1, 2, 3, 4, Junior Y Cabinet, 1; Emerson Society, 1, 2, 3, 4; TECOAN Representative, 3; Home Economics Club, 1, 2, 3, 4; Proctor, 4.



HAROLD K. TAYLOR

Stantonsburg, N. C.

Science and History

Y.M.C.A., 1, 2, 3, 4, Cabinet, 3; Tece Echo Staff, 1, 2, Associate Editor, 2, 4; Phi Sigma Pi Fraternity, 2, 3, 4, Assistant Secretary, 3, 4.

LOUISE THOMAS

Oakboro, N. C.

English and History

Mars Hill College, 1, 2; English Club, 3, 4; International Relations Club, 4; Y.W.C.A., 3, 4; W.A.A., 3, 4, Young Democrat Club, 3, 4, Associate Editor Tece Echo, 4; Lanier Society, 3; Jarvis Forensic Club, 3.



RUTH M. TUCKER

Townsville, N. C.

Grammar

Lanier Society, 1, 2, 3, 4; W.A.A., 1, 2; P.S.A. Council, 2, 3, 4, Feature, 2; Class Treasurer, 3; TECOAN Staff, 3; Publication Board, 4; Young Democrat Club, 1.

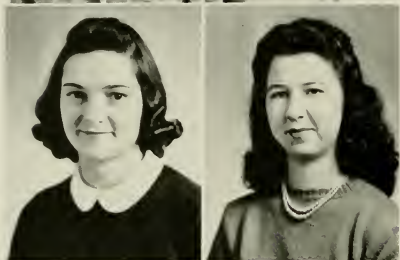
Seniors



BESS USRY
Oxford, N. C.
Home Economics and Science

MARGARET VAIL
Pikeville, N. C.
Home Economics and Science

W.C.U.N.C., 1; Home Economics Club, 2, 3, 4;
Science Club, 2, 3, 4.



IRENE VAUGHAN
Rich Square, N. C.
Home Economics and Science

Louisburg College, 1, 2; Home Economics Club, 3,
4; Science Club, 3, 4; Y.W.C.A., 3, 4.

IRIS WALKER
Hillsboro, N. C.
Commerce and Music

Glee Club, 3, 4; Band, 3, 4; Alpha Iota Sorority,
3, 4; Commerce Club, 2, 3; Young Democrat Club,
3; Y. W. C. A., 3.



MARY LOUISE WALLACE
Belhaven, N. C.
Home Economics and Science

Poe Society, 1, 2, 3, 4; W.A.A., 1, 2; Young Dem-
ocrat Club, 2, 3, 4; Y.W.C.A., 1, 2, 3, 4; Science
Club, 2, 3, 4; College Band, 1, 2; Home Econom-
ics Club, 2, 3, 4.

INGRAM WALTERS
Bladenboro, N. C.
Music

Seniors

VIRGIL WARD

Williamston, N. C.

English and History

Poe Society 1, 2, 3, 4; Marshal, 4; Teco Echo Representative, 2; House President, 3; Women's Student Government Association, 3; Class Treasurer, 4; Social Committee, 4; Who's Who Among Students in American Colleges and Universities.



MILDRED WATKINS

Louisburg, N. C.

Home Economics and Science

SARA WATKINS

Rockingham, N. C.

Grammar

W.A.A., 1, 2, 3; Association of Childhood Education, 1, 2, 3; Y.W.C.A., 1; Young Democrat Club, 2, 3.



MARJORIE WEBB

Pinetops, N. C.

Primary

Y.W.C.A., 1, Junior Y Cabinet, 1; Poe Society, 1, 2, 3, 4; Association of Childhood Education, 2, 3, 4; Young Democrat Club, 1, 2, 3.

JUNE WELLS

Greenville, N. C.

English and History

Flora Macdonald College, 1, 2; English Club, 3, 4; Young Democrat Club, 3, 4.



GRACE WESTBROOK

Raleigh, N. C.

Science and Physical Education

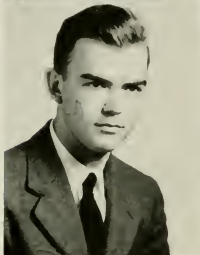
Young Democrat Club, 2, 3; Science Club, 2, 3; Poe Society, 1, 2, 3; Women's Athletic Association, 2, 3, 4; Varsity Tennis, 2, 3; W.A.A. Cabinet, 2.

Seniors



AUDREY WHITE
Poplar Branch, N. C.
English and French

Y.W.C.A., 1; Young Democrat Club, 1; English Club, 1, 2, 3; Phi Sigma, 1, 2, 3, 4; Vice-President, 3; Lanier Society, 1, 2.



REID WHITE
Robersonville, N. C.
English

JAMES LAWRENCE WHITE
Scotland Neck, N. C.
Commerce and Music

Mars Hill Junior College, 1, 2; Choir, 3, 4, B.S.U. Council, 3; Chi Pi Players, 3; Double Door, 3; Martha, 4; Y.M.C.A., 3, 4; Commerce Club, 3, 4; Easter Pageant, 3, 4; Senior Superlative.

LUCILLE WHITE
Aulander, N. C.
Primary

Chowan College, 1, 2; Association of Childhood Education, 1; Lanier Society, 4; Y.W.A., 4.



KATHLEEN WHITEHURST
Bethel, N. C.
Primary

Association of Childhood Education, 3, 4; Lanier Society, 1, 4; Y.W.C.A., 4; Alumni Daughters and Sons Club, 1, 2, 3, 4.

ANNIE WHITFORD
Ayden, N. C.
Grammar

Seniors

MARY HAZEL WHITLEY
Raeford, N. C.

Primary

Association of Childhood Education, 2, 3, 4; Choir, 2; Glee Club, 2, 4; Young Democrat Club, 4; W.C.U.N.C., 1.



MATILDA VAIL WHITLEY
Smithfield, N. C.

Home Economics and Science

Louisburg, 1, 2; Y.W.C.A., 3, 4; Home Economics Club, 3, 4; Science Club, 3.



EUGENIA WILLIAMS
Gatesville, N. C.

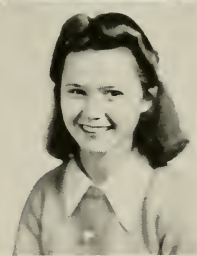
Primary

Y.W.C.A., 3, 4; Young Democrat Club, 2; Association of Childhood Education, 3, 4.

NAOMI ELIZABETH WILLIAMS
Wade, N. C.

Grammar

Campbell College, 1, 2; Association of Childhood Education, 4; Y.W.C.A., 4; B.S.U. Council, 4.



MELVA WILLIAMSON
Clinton, N. C.

Home Economics and Social Science

Home Economics Club, 3, 4; Proctor, 3; Y.W.C.A., 3, 4; Young Democrat Club, 3, 4; Pineland College, 1, 2.

VIRGINIA WILSON
Bethel, N. C.

Primary

Y.W.C.A., 1, 2; Association of Childhood Education, 1; Lanier Society, 1.

Seniors



LAURA FAYE WOOD
Four Oaks, N. C.

Primary

Lanier Society, 1, 2, 3, 4; W. A. A., 1, 2; Association of Childhood Education, 3, 4; Y. W. C. A., 2, 3, 4; B. S. U. Council, 2, 3, 4; TECOAN Staff, 3; Point System Committee, 4; Young Democrat Club, 1.

RACHEL WOODARD
Winterville, N. C.

Primary

Association of Childhood Education, 4; Young Democrat Club, 2.



FLOYD WOODY
Asheville, N. C.

History and Physical Education

Wake Forest, 1, 2; Varsity Club, 3, 4; Football, 3, 4; Basketball, 3; Baseball, 3, 4.

JACK YOUNG
Stovall, N. C.

Science and Physical Education

Y. M. C. A., 4; Varsity Club, 3, 4; Vice-President, 3; Chi Pi Players, 3, 4; Basketball, 3, 4; Football, 3, 4; Brevard College, 1, 2.



MARY MOSS YOUNG
Willow Springs, N. C.

Grammar

Y. W. C. A., 1, 2, 3; International Relations Club, 1; Association of Childhood Education, 1, 2; Sigma Pi Alpha, 1; Business Staff of Pieces of Eight, 1; College Choir, 1; P. S. A. Council, 1.

ROBERT YOUNG
Stovall, N. C.

Science and Physical Education

Brevard College, 1, 2; Football, 3, 4; Basketball, 3, 4; Baseball, 4; Varsity Club, 3, 4; Y. M. C. A., 3, 4.

Seniors

SOU LOU YOUNG

Angier, N. C.

Home Economics and Science

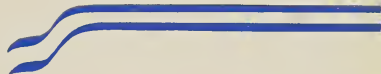
Campbell College, 1, 2; Home Economics Club, 4;
Science Club, 3; Emerson Society, 3, 4.

NICHOLAS JOHN ZURAS

Washington, D. C.

Physical Education

High Point College, 1, 2; Varsity Club, 3, 4; Phi
Sigma Pi, 4; Y.M.C.A., 3, 4; Football, 3, 4; Bas-
ketball, 3, 4.





"AGNES."
NOT SERIOUS?
"OSCAR."

LADY ON THE LAWN.
WELL?
WHAT A CLASS!

LADIES IN WAITING.
SH H H H.
WHERE'S SARAH?



SENIOR SUPERLATIVES



JIM WHITE
Most Individual

MADGE LANE
Most Intellectual

BESSIE FAY HUNT
Most Studious



SAMMIE CRANDALL
Most Dependable

EVAN GRIFFIN
Best Leader

PEARL HOUSE
Best Personality



LOUISE LINDSAY
Most Athletic

WILEY BROWN
Most Athletic

METSEL SIMMONS
Wittiest



HELEN PEACOCK
Prettiest

WALTER MALLARD
Most Handsome

LOUISE AVERETTE
Cutest

HILDA MARTIN
Best Dancer

ADMINTA EURE
Friendliest

JANIE EAKES
Best All-Round

NELL MCCULLEN
Most Versatile

JOYCE DUNHAM
Most Capable

NORMA HODGES
Best Dressed

RUDY WALTERS
*Best Dretted
Most Talented*

MILDRED MAXWELL
Most Original

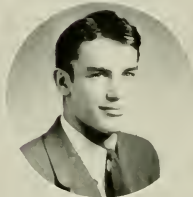
BILLY GREENE
Most Popular

Who's Who Among Students in

First Row: JANE CURRIN, HELEN MASSEY,
ADMINTA EURE, VIRGIL WARD, EVAN GRIFFIN,
METSSEL SIMMONS, SAMMIE CRANDALL.



Second Row: WILLIAM GREENE, MARY
LONG FORD, GRACE ROSS, JANIE EAKES,
BESSIE FAY HUNT, MILDRED BEVERLY,
HELEN PEACOCK.



Third Row: BOBBIE LORRAINE PRITCHARD,
MARJORIE DAVIS, CHARLOTTE SHEARIN,
DOROTHINE MASSEY, ANNE POYTHRESS,
ARLINE MERCER.

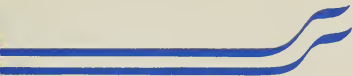


American Colleges and Universities



JUNIORS





JUNIOR OFFICERS

MARY EMMA JEFFERSON	<i>Vice-President</i>
DONALD PERRY	<i>Treasurer</i>
HELEN FLYNN	<i>Secretary</i>
DAVE OWENS	<i>President</i>

Juniors

First Row: LELA ADAMS, Blounts Creek, N. C.; RUTH YORK ALLEN, Creedmoor, N. C.; JENNIE ALSTON, Louisburg, N. C.; GEORGIA BUNCH, Hobbsville, N. C.; VIOLA ALSTON, Louisburg, N. C.; JESSILU AMAN, Jacksonville, N. C.

Second Row: EDNA EARL AVERETT, Oxford, N. C.; MAVIS BALLANCE, Maple, N. C.; ALDINE BARNHILL, Greenville, N. C.; ANNIE BRITTON BARTHOLEMFW, Spring Hope, N. C.; ALLEEN BATCHELOR, Jonesboro, N. C.; RENA BATEMAN, Ayden, N. C.

Third Row: POLLY BATTEN, Salem, N. C.; HELEN BLANCHARD, Wallace, N. C.; VIRGINIA LEE BLEDSOE, New Bern, N. C.; BLENNIE MAE BLUE, Carthage, N. C.; CHARLOTTE BORDEAUX, Lillington, N. C.; KATHRYN BOYD, Jackson, N. C.

Fourth Row: LILLIAN BOYETTE, Aboskie, N. C.; FRANCES BREWER, Greenville, N. C.; FARA RAE BRITT, Seaboard, N. C.; VIRGINIA DARE BRITTON, Pendleton, N. C.; EDWARD BROWN, Colerain, N. C.; LOUISE BROWN, Carthage, N. C.



First Row: MARJORIE BROWN, Bailey, N. C.; NORMA LYDE BROWN, Beulaville, N. C.; ROSALIE BROWN, Greenville, N. C.; VELNER BROWN, Lasker, N. C.; EMILY BURNS, Goldston, N. C.; JEROME BUTLER, Scotland Neck, N. C.

Second Row: MARY VIRGINIA BUTT, Aurora, N. C.; VERA CARRAWAY, Goldsboro, N. C.; NELL LOUISE CARTER, Hobbsville, N. C.; SARA CHAFFIN, Sanford, N. C.; MURLE CHAPMAN, Grifton, N. C.; DIXIE CHAPPELL, Hertford, N. C.

Third Row: VIRGINIA CHARLES, Aboskie, N. C.; EMMA GRACE CLARK, Everetts, N. C.; RUBY CLIFTON, Sanford, N. C.; S. MARIE COBB, Merry Hill, N. C.; ELWANDA COKER, Pink Hill, N. C.; ROENA COLLINS, Angier, N. C.

Fourth Row: NINA COOK, Lenior, N. C.; GARNETTE CORDLE, Seaboard, N. C.; WILLIAM COUNCIL, Durham, N. C.; CARLYLE COX, Robersonville, N. C.; ELIZABETH CREECH, Princeton, N. C.; SUE CRENSHAW, Wilson, N. C.

Juniors



Juniors

First Row: DORIS CROSBY, Wilson, N. C.; MARIE DARDEN, Kennansville, N. C.; BONNIE DAVIS, Micro, N. C.; DORIS DAVIS, Goldsboro, N. C.; DOROTHY RAE DAVIE, Seaboard, N. C.; FREEDA DAVIS, Mt. Olive, N. C.

Second Row: IRENE DAVIS, Pikeville, N. C.; RUTH P. DAVIS, Pikeville, N. C.; ANNABELLE DAWSON, Dunn, N. C.; WILMA RAE DEAN, Oxford, N. C.; CAROLYN DIXON, Vanceboro, N. C.; RACHEL DIXON, New Bern, N. C.

Third Row: MARGIE DUDLEY, Greenville, N. C.; ESPY EAKINS, Ivanhoe, N. C.; DORIS EDWARDS, Greenville, N. C.; ANNIE KATE EVANS, Clinton, N. C.; HAZEL GRAY EVANS, Greenville, N. C.; ALICE FERRELL, Clayton, N. C.

Fourth Row: MARJORIE FITZGERALD, Selma, N. C.; AMY FLOYD, Barnesville, N. C.; HELEN FLYNN, Washington, N. C.; BEATRICE FORREST, Winterville, N. C.; MARGARET GEROCK, Maysville, N. C.; SAMUEL GODDARD, Jamesville, N. C.



First Row: LUCY FORD GREENE, *Mocksville, N. C.*; JANE HARDEF, *Greenville, N. C.*; MARGARET PUGH HARDEN, *Windsor, N. C.*; FRANCES HARGROVE, *Dunn, N. C.*; EDNA HARRELL, *Wilmington, N. C.*; MYRTLE L. HARRIS, *Farmville, N. C.*

Second Row: ROSALYN HARRIS, *Arcola, N. C.*; W. B. HARRIS, *Greenville, N. C.*; WILMA L. HART, *Virginia, Va.*; MARY ALICE HASTINGS, *Camden, N. C.*; VERA HASTINGS, *Camden, N. C.*; LAURA HEARNE, *Greenville, N. C.*

Third Row: CHRISTINE HELLEN, *Greenville, N. C.*; IRIS HERRING, *Watha, N. C.*; BETSY HOBGOOD, *Greenville, N. C.*; DORIS HOCKADAY, *Raleigh, N. C.*; GENEVIEVE HODGIN, *Goldsboro, N. C.*; ANNE HOLLOMAN, *Aulander, N. C.*

Fourth Row: LOUISE HONEYCUTT, *Roseboro, N. C.*; RUTH HOOD, *Goldsboro, N. C.*; OPHELIA HOOKS, *Whiteville, N. C.*; SYBIL HORTON, *Louisburg, N. C.*; HELEN L. HOUSE, *Robersonville, N. C.*; CAROL L. HUMPHRIES, *Woodsdale, N. C.*

Juniors



Juniors

First Row: LOUISE HUNTER, Littleton, N. C.; SARA HUNTER, Littleton, N. C.; SARAH HUNTER, Lexington, N. C.; ARTHUR JACKSON, Ayden, N. C.; HELEN JAMES, Bethel, N. C.; NELL JAMES, Robersonville, N. C.

Second Row: MARY EMMA JEFFERSON, Fountain, N. C.; IDA JOHNSON, Fayetteville, N. C.; DOUGLAS JONES, Farmville, N. C.; EVELYN JONES, Greenville, N. C.; HAZEL DELL JONES, Ayden, N. C.; KATHRYN JONES, Pink Hill, N. C.

Third Row: NAOMI JONES, Ayden, N. C.; J. B. JOYNER, Greenville, N. C.; FLORIELD KENNEDY, Clinton, N. C.; ELIZABETH KITTRELL, Kittrell, N. C.; VIRGINIA KNOWLES, W'allace, N. C.; EDNA EARL LANG, Gatesville, N. C.

Fourth Row: MALINE LANGSTON, Gates, N. C.; GRACE LEE, Four Oaks, N. C.; CATHERINE LEWIS, Faison, N. C.; MARGARET LEWIS, Turkey, N. C.; WILMA LEWIS, Dublin, N. C.; MARGARET LILES, Lilesville, N. C.



First Row: JANICE LISTER, Elizabeth City, N. C.: BILL LUCAS, Asheville, N. C.: EVELYN LYON, Ayden, N. C.: ANNE MABRY, Norwood, N. C.: ELLEN MADDREY, Seaboard, N. C.: LONA MADDREY, Seaboard, N. C.

Second Row: CLYDE MANN, Manteo, N. C.: ELNORA L. MASON, Atlantic, N. C.: MYRTLE GRAY MASSENGILL, Four Oaks, N. C.: CHARLOTTE MATTHEWS, Apex, N. C.: HIRAM MAYO, Mesc, N. C.: NORA MEIGGS, Camden, N. C.

Third Row: LORRAINE MOORE, Falkland, N. C.; MARY SUE MOORE, Greenville, N. C.: ESTHER MORGAN, Lillington, N. C.: FLORINE MORRIS, Anlander, N. C.: MARGUERITE MOYE, Snow Hill, N. C.: GLADYS MUMFORD, Kenly, N. C.

Fourth Row: JOHN W. MURRAY, Raleigh, N. C.: ANNIE PEARL McDONALD, Jackson Springs, N. C.: ELOISE McCAIN, New Port, N. C.: JEAN MCKINSON, Mt. Gilead, N. C.: ALENE McLAMB, Roseboro, N. C.: FRANCES NEWBY, Hertford, N. C.

Juniors



Juniors

First Row: BLONNIE ODUM, Swansboro, N. C.: OLETA ODUM, Swansboro, N. C.:
DAVE OWENS, Pinetops, N. C.: CASSIE PARNELL, Pikesville, N. C.: DOROTHY
PEARSALL, Wallace, N. C.: ANNIE SUE PERRY, Merry Hill, N. C.

Second Row: DONALD PERRY, Washington, N. C.: REBECCA ANNE PERRY, Louis-
burg, N. C.: FRANCES PHELPS, Aboskie, N. C.: ANNIE M. PINER, Marshallburg,
N. C.: CHRISTINE PLEASANT, Angier, N. C.: MARY JEWELL PORTER, Grimes-
land, N. C.

Third Row: EDNA POWELL, Smithfield, N. C.: EDNA LOUISE POWELL, Enfield,
N. C.: MRS. NELL REAVIS, Yadkinville, N. C.: HELEN REGISTER, Wilmington,
N. C.: VIOLA REGISTER, Dover, N. C.: MARGARETTE RICKS, Selma, N. C.

Fourth Row: RUTH ROACH, New Bern, N. C.: GRACE ROBESON, Robersonville,
N. C.: FRANCES ROBERTS, Yanceyville, N. C.: M. ELIZABETH ROBERTS, Willow
Springs, N. C.: MARIBELLE ROBERTSON, Greenville, N. C.: BLANCHE LEE ROOKS,
Watha, N. C.



First Row: EGBERT ROUSE, Grifton, N. C.; VIRGINIA ROUSE, Greenville, N. C.; MARJORIE ROWE, Ayden, N. C.; KATHERINE RUSSELL, Biscoe, N. C.; DOROTHY SASSER, Wilmington, N. C.; MARGUERITE SAWYER, Powell's Point, N. C.

Second Row: LOIS SESSOMS, Aboskie, N. C.; DOROTHY SHEARIN, Littleton, N. C.; MARY BETH SHEFFIELD, Rosehill, N. C.; J. C. SHEPHERD, Lexington, N. C.; BONNIE BELLE SHIRLEY, Ayden, N. C.; BURCHIE SMITH, Belhaven, N. C.

Third Row: LEON RAY SPARROW, Ransomville, N. C.; MARTHA SPENCE, Fuquay Springs, N. C.; RUTH SPENCER, Washington, N. C.; ERIS STALLINGS, Jamesville, N. C.; ANNIE STEVENSON, Palmyra, N. C.; HELEN STONE, Reidsville, N. C.

Fourth Row: ALICE STOVALL, Stovall, N. C.; GERALDINE TAYLOR, Greenville, N. C.; HELEN THOMAS, Corinth, N. C.; SUE THOMAS, Beaufort, N. C.; BERNARD TRENT, Gold Hill, N. C.; FRANCES TUNSTALL, South Boston, Va.

Juniors



Juniors

First Row: JANE VANN, Clinton, N. C.: LINDA VANN, Ayden, N. C.: MARGARET VESTAL, North Wilkesboro, N. C.: ERNESTINE VINSON, Woodland, N. C.: ANNIE MAE WARD, Whitakers, N. C.

Second Row: GWENDOLYN WARD, Merry Hill, N. C.: FREEMAN WATSON, Albemarle, N. C.: MABEL SPENCE WATSON, Freemont, N. C.: GRETCHEN WEBSTER, Aboskie, N. C.: DORIS WELLS, Greenville, N. C.

Third Row: RUBY WHITE, Aurora, N. C.: CARL WHITEHURST, Greenville, N. C.: PATSY WHITEHURST, Greenville, N. C.: DOROTHY WHITLEY, Bethel, N. C.: MARY COX, Goldsboro, N. C.: MARY ALICE COZART, Oxford, N. C.



First Row: DOROTHY WHITLEY, *Smithfield, N. C.*: ROBERT WHITLEY, *Betbel, N. C.*: EDITH WILKERSON, *Black Creek, N. C.*: JULIA ANN WILLEY, *Gates, N. C.*: ADA LOUISE WILLEY, *Gates, N. C.*

Second Row: HARRY WILLEY, *Gates, N. C.*: DORIS WILLIAMS, *Kinston, N. C.*: HAZEL WILLIFORD, *Greenville, N. C.*: JESSIE MARY WILLSON, *Roxboro, N. C.*: DOROTHY M. WILSON, *Grimesland, N. C.*

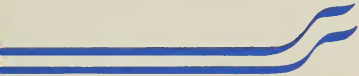
Third Row: MILDRED WISE, *Hobgood, N. C.*: NANCY WYNNE, *Betbel, N. C.*: HAZEL YELVERTON, *Stantonsburg, N. C.*: RUTH ZABOROWSKI, *Manchester, N. C.*: ALMA ROUSE, *Kinston, N. C.*: MILDRED WHITE, *Hertford, N. C.*

Juniors



SOPHOMORES





SOPHOMORE OFFICERS

PAT EDWARDS	<i>President</i>
DOROTHY JOHNSON	<i>Vice-President</i>
ROBERT MARTIN	<i>Treasurer</i>
DOROTHY DENNY	<i>Secretary</i>

Sophomores

First Row

RUTH ALFORD
MATALIE ATKINSON
KATHLEEN AYCOCK
JESSIE BALLANTINE



Second Row

ELLEN BARNHILL
ISABEL BARNHILL
BETTY BATSON
ELLIS BEDSWORTH



Third Row

SYBIL BEEMAN
MARY BLANCHARD
WINNIFRED BOND
GRETCHEN BOSWELL



Fourth Row

MARION BOSWELL
DOROTHEA BOYETTE
CORINNE BRITTON
DORIS BROCK



Fifth Row

EDITH BROWN
ELIZABETH BROWN
MARY BRYAN
MILLISON BRYANT



Sixth Row

EDITH BUCK
INEZ BULLOCK
SARAH ELSIE BUNN
DORIS BUTLER



Seventh Row

MARGARET BUTLER
ALENE CADE
LOTA CAIN
DOROTHY CAROWAN



Sophomores



First Row

FRANCES CARTER
ELIZABETH CATES
LESLIE CHADWICK
IDA FLORINNE CLARK



Second Row

THELMA CHERRY
DORIS COBB
FRANCIS COINER
SARAH COLLINS



Third Row

VIRGINIA COOKE
ALICE COPELAND
MILDRED COPELAND
ELSIE CORBITT



Fourth Row

BESSIE COUNCIL
JANET COVERT
WILMA COZART
ELIZABETH CRAWFORD



Fifth Row

NELL CRAWFORD
GARNETTE CROCKER
SARAH CURRIN
CHARLES CUSHMAN



Sixth Row

JEAN DAILEY
WILLIE MAE DANIELS
ELIZABETH DARDEN
BERSHA DAVIS



Seventh Row

ELSIE DAVIS
PANSIE DEAL
EVA DEANES
DOROTHY DENNING

Sophomores

First Row

FRANCES EAKES
SIBYL EAKES
JESSIE EARP
JACK EDWARDS



Second Row

LUCILLE EDWARDS
PAT EDWARDS
SARAH ELLIOT
MARGARET ENNETT



Third Row

GRACE EVANS
HARRIET EVERETT
GERALDINE FELTON
VIOLET FIELDS



Fourth Row

MAMIE LEE FISCHEL
MORRIS FLOW
MIRIAM FREEMAN
MIRIAM HEWITT GARGANO



Fifth Row

MARGARET GEORGE
LENA ROSE GILES
ANNE GILLIAM
JEAN GOGGIN



Sixth Row

SYLVIA GREENE
MARIETTA GRIFFIN
JULIA ANNE HANCOCK
JANE HARDY



Seventh Row

HAZEL HARRIS
LILLIAN HARRIS
ALLENE HAYNES
MARY HERRING



Sophomores



First Row

ESTELLE HESTER
KATHERINE HESTER
LILLIAN HINES
ROBIN HOLLAND



Second Row

MARY EDITH HOLLINGSWORTH
LOUISE HOLLAMAN
LORRAINE HORNE
REBECCA HORTON



Third Row

MARGUERITTE HUDSON
MARGARET IPOCK
ELIZABETH IVES
HARRY JARVIS



Fourth Row

BERNICE JENKINS
ELIZABETH JENKINS
CAMILLE JERNIGAN
CLARINE JOHNSON



Fifth Row

DOT JOHNSON
HELEN PAGE JOHNSON
MIRIAM JOHNSON
SUE JOHNSON



Sixth Row

WILLIAM STANFIELD JOHNSON
NORWOOD JONES
MARY JORDAN
GERALDINE KEARNEY



Seventh Row

EDNA KEITH
NANCY KILPATRICK
COLLEEN KING
WORTH LANIER

Sophomores

First Row

LOUISE LASSITER
IRIS LEE
RENALDO LEE
DOT LEWIS



Second Row

SIBYLE LEDFORD
ELIZABETH LEWIS
FRANCES LEWIS
NELL RACHEL LEWIS



Third Row

GARLAND LITTLE
BERTHA MALLARD
CHRISTINE MANNING
JANICE MARINE



Fourth Row

EUGENIE MARSHBURN
FRANCES MARSHBURN
LAURENE MARSHBURN
BOBBIE LOU MARTIN



Fifth Row

ROBERT MARTIN
MANORA MEWBURN
MERRIMOND MIZELLE
DORIS MOORE



Sixth Row

ANNE MORRIS
TOM MOSELY
SARA ANN MOSS
NELL LOUISE MURPHY



Seventh Row

JEAN McDONALD
ESTHER MCGOUGAN
RUTH McHAN
SARAH McINNIS



Sophomores



First Row

LOIS MCLEOD
MARGARET McMILLAN
MATTIE MCNEILL
SUE NORWOOD



Second Row

PEARL OGBURN
LU LU OVERTON
EDNA PARNELL
ZULA PEARSON



Third Row

DOROTHY PEELE
ELEANOR PHILLIPS
RETHA POPE
MYRTLE PRICE



Fourth Row

REBECCA PRIDGEN
MARJORIE PRIVOTT
MARY ALICE REAVES
ELIZABETH REGISTER



Fifth Row

ELLEN RIDDICK
SARAH ROBERSON
MARY ANN ROGERS
ALICE ROWELL



Sixth Row

RUBY SAFLEY
REBA SANDERSON
LEONA SASSER
WILMA SAUNDERS



Seventh Row

MARGARET SAVAGE
BARBARA SELBY
AGATHA SEWELL
GENEVIEVE SHINE

Sophomores

First Row

ALMA SIMMONS
INEZ SIMMONS
LUCILLE SIZEMORE
MARY LIB SLATE



Second Row

JEWELL SLATER
ETHEL SMITH
JAKE SMITH
LOIS SMITH



Third Row

LUCILLE SMITH
LUCY NELL SMITH
GLADYS SNEEL
SARA STANTON



Fourth Row

NANCY STEWART
SAM STRICKLAND
ELIZABETH SUGG
SADIE RUTH SUTTON



Fifth Row

MARY KATE SWAIN
FOUNTAIN TAYLOR
GRACE TAYLOR
LOTTIE TEW



Sixth Row

LORRAINE THOMAS
MARY BLOUNT THORP
SUSAN TIMBERLAKE
CHARLIE TRIPP



Seventh Row

IRENE TROTT
MAX TUCKER
LORRAINE TYNDALL
WANDA TYNDALL



Sophomores

First Row

ALLENE VAUSE
FRANCES WALKER
LAURA MARIE WALKER
JOYCE WATSON

Second Row

LOIS WEST
BERNICE WHITE
CATHERINE WHITE
ESTHER MAIE WHITE

Third Row

MARION WHITE
GRACE WHITEHURST
NORMA WHITFIELD
ALICE WIGGINS

Fourth Row

BEATRICE WILLIAMS
VERA WILLIAMS
CATHERINE WILSON
ELIZABETH WINBERRY

Fifth Row

MARY WINDLEY
PINEAR MAE WINDLEY
RUTH WINSLOW
LUCY WINSTON

Sixth Row

LOUVENE WOMBLE
CHARLOTTE WOOTEN
HELEN WOOTEN
LOUISE WOOTEN

Seventh Row

JAMES WORSLEY
MABEL WYNNIS
VIVIAN YELVERTON



- a. TELL IT TO THE MARINES.
- b. JUDGE THEM NOT BY WHAT THEY DO.
- c. STEP RIGHT UP.
- d. IT'S BEING DONE THIS SEASON.
- e. YUM! YUM!

- f. BUDDY, YOUR ROOMMATE.
- g. JUST WAITING.
- b. DICK AND ANN.
- i. THAT FARAWAY LOOK.

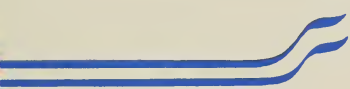


- a. Now, Now!!
- b. OUR "POP."
- c. "WE THREE."
- d. HEIL, HITLER.
- e. JUST ACT NATURAL.

- f. LEG SHOW.
- g. READY TO RIDE.
- h. MAIL'S UP.
- i. WHAT ARE THEY LOOKING FOR?
- j. BUDDIE AND MOLLIE.

FRESHMEN





FRESHMEN OFFICERS

DOROTHY CREECH	<i>Secretary</i>
ROBERT MORGAN	<i>Treasurer</i>
MOZELLE HOOKS	<i>President</i>
MARGARET JOHNSTON	<i>Vice-President</i>

Freshmen



First Row: RAY ABENETHY, DAHLIA ADAMS, MONNIE ADAMS, JERRY ALBRITTON, ADA LOU ALLEN, SARA ALLMAN, PEARL ARNOLD, JEAN ASBELL, MARY ELIZABETH AUSTIN.

Second Row: MIRIAM AVERETT, SARAH AVERETTE, DORA O'NEIL BAILEY, JEAN BAILEY, SARAH BALLANCE, FRANCELLE BARDEN, OTHA BARNHILL, MARY BASS, VIVIAN BASS.

Third Row: CORNELIA BEEMS, ELSIE BIGGS, MARY BISHER, MOLLIE BLALOCK, MARTHA ANNETTE BLAND, ELEANOR BOOTH, RUTH BOSTIAN, ALMA GRAY BOWDEN, MAE BOWEN.

Fourth Row: JOAN BOWERS, HAZEL BRANCH, DOROTHY BRAYNARD, BARBARA BREWER, ELIZABETH BRIDGERS, EDWARD BRIGHT, DOROTHY BRILEY, JAMES BRILEY, CATHERINE BRINSON.

Freshmen



First Row: MARY ANNE BROWN, REBA BROWN, ALTON BUCK, HURLEY BUNCH, MARY LOUISE BURRISS, CAROLYN BYRD, MARY ALICE CAHOON, VIVIAN CALLIS, JESSIE CARTER.

Second Row: FAYE CASE, ELOISE CHADWICK, MARY ALICE CHARLTON, ELEANOR CHESTNUTT, HARRIET CHESTNUTT, ED CHISHOLM, MARY L. COBB, FRANCES CONGLETON, DOT COPELAND.

Third Row: WILLIAM EARL CRAFT, NORMA CRAWLEY, DOROTHY J. CREECH, ELIZABETH CURRIN, BEVERLY CUTLER, CAROLYN DANIELS, GLADYS DAVIS, VIRGINIA DAVIS, FLORINE DENTON.

Fourth Row: GRACE DICKENS, ALICE MITCHELL DILDAY, FRANCES DODSON, LOUISE DOUGHTIE, JEAN DOUGLAS, RACHEL EAKINS, ANNIE LEE EASON, MYRA LEE EDMUNDSON, BETTIE GRAY ELDRIDGE.

Freshmen



First Row: CHARLOTTE ELLIOTT, ISABEL ELLIOTT, CORNELIA ELLIS, MARY FRANCES ELLIS, AMANDA ETHERIDGE, JOSEPHINE EVERETT, RUTH EVERETTE, JANICE FAIRLESS, FRANCES FINCH.

Second Row: ELVY FORREST, ANNE FOXWORTH, DORIS FRANCK, SARA FRANCK, ALICE GARDNER, EDWARD GARRIS, MARY GAYNOR, JOSEPHINE GIBSON, BERNICE GODLEY.

Third Row: ATHLEEN GUPTON, BETTY ROSE GURGANUS, ANNA GWYNNE, DORIS HALL, MARGARET HARDESTRY, BILLIE HARDISON, DIXIE HARRISON, EDNA HARRISON, CAROLYN HASSELL.

Fourth Row: PAULINE HIGGINS, LA MONTE HILL, ERMA HINNANT, MATTIE BROWN HINSON, RUTH HINSON, MARIE HINTON, HARRIET HOLLENMAN, MOZELLE HOOKS, ISABELLE HUMPHREY.

Freshmen



First Row: RALPH HUNTER, LUCILLE HUSKETT, MILDRED HUSSEY, KENNETH JAMES, VIRGINIA JEANETTE, MARTHA JEFFERSON, EVELYN JENKINS, HOLLIS JERNIGAN, BERTHA JOHNSON.

Second Row: JACK JOHNSON, WILMA JOHNSON, MARGARET JOHNSTON, ANNIE LAURIE JONES, DONEY JONES, DOROTHY JONES, EDDIE JONES, ELIZABETH JONES, SARAH JONES.

Third Row: ATHENE JORDAN, CLAUDIA JORDAN, DOROTHY JORDAN, LILLIAN JORDAN, CLINTON JOYNER, MARY BLAINE JUSTICE, ILLMAR KEARNEY, WILMAR KEARNEY, VIRGINIA KEEL.

Fourth Row: LOUISE KEITH, LUCY LANCASTER, PEARLIE LANGSTON, JOSEPH LASSITER, EVELYN LEWIS, NANNIE LOU LITTLE, FRANCES LOWERY, MARGARET MAGILL, OZELLE MALLARD.

Freshmen



First Row: BEULAH MANNING, JANE MANNING, MARY MANNING, FRANK MARKS, LULA JEAN MATTHEWS, ELMO MAYO, VELMA MEIGGS, DORIS MITCHELL, GRAYCE MITCHELL.

Second Row: EUNICE MODLIN, HILDA MOORE, EDNA EARLE MOORE, MAUDE JORDAN MOORE, SARAH MOORE, ELIZABETH MORGAN, ROBERT MORGAN, DORLAS MORRIS, MARTHA MOSELEY.

Third Row: JEAN MURPHY, ESTELLE MCBRIDE, LOUISE MCCOTTER, KATHRYN MCDANIEL, QUEENIE MCGOWAN, SARA MCKENZIE, LOEDE MCLAWHORN, BETTY NOWARAH, LUCILLE OAKES.

Fourth Row: BLANCHE OGBURN, KATIE EARLE OWEN, BOOTS PANETTI, BARBARA PARKER, MARY LYNN PEEDIN, MARGARET PERSON, NELL PITTS, MAXINE PLEASANT, ISABELLE POLLOCK.

Freshmen



First Row: EDNA POWELL, MARIETTA PRINCE, DARDENELLA PROCTOR, KATHRYN QUICK, LILLIAN RAY, DOT READE, FRANCES RHODES, RACHEL ROBERTSON, LEAH MILDRED ROSS.

Second Row: PAULA ROSS, EVELYN ROUSE, TROY ROUSE, JOHN ICKIE SAIEED, PEARL SAWYER, LILLIAN SCARLETT, ELGIA SCOTT, MARY FRANCES SLACK, VIRGINIA SMALL.

Third Row: BETTIE SMITH, DOROTHY OLIVEAN SMITH, EUGENE SMITH, EUNICE SMITH, JEANETTE SMITH, MARGARET SMITH, MARGIE SMITH, MARJORIE SMITH, MAXINE SMITH.

Fourth Row: DORIS SPARKS, VIOLET SPARKS, KATHRYN SPRINKLE, GRETCHEN STATON, MARY FRANCES STEPHENSON, VIRGINIA STEPHENSON, DORIS STEVENS, NANCY STEVENS, DIXIE SUGG.

Freshmen



First Row: DORIS SUTTON, DELIA ROSE TAYLOR, G. A. TAYLOR, ELIZABETH TEMPLE, FRANCES TEMPLE, ELIZABETH THOMAS, ALTA MAE THOMPSON, ANNE THOMPSON, MARGARET L. THOMPSON.

Second Row: JANE TUCKER, HELEN TYNDALL, BETTY SUE TYSON, LOUISE VAINRIGHT, MARGIE VARNELL, MARY LEE VENTERS, MARIE WALTHAL, M. C. WARD, JAMES WARREN.

Third Row: MARY WARREN, MILDRED WELLONS, ELSIE WEST, LOUISE WHITE, MARIE WHITEHURST, EVELYN WILLIAMS, LILLIAN WILLIAMS, LYNN WILLIAMS, MARGARET WILLIAMS.

Fourth Row: THOMAS CLAY WILLIAMS, SARAH WILLSON, MARJORIE WINDLEY, JENNY WITKOWSKI, CHARLOTTE WOMBLE, IRIS WOODY, GERTRUDE WOOLARD, FRANCES YANCEY, CHRISTINE YARBOROUGH.

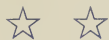


- a. STICKING TOGETHER.
- b. TARAZAN—FISH.
- c. O-OH!
- d. WHERE'S THE RACKET?
- e. WHEN THE ROLL IS CALLED UP YONDER.
- f. PLAYING POSSUM.
- g. CAN'T BE THAT BAD.

- h. E. C. T. C. BOUND.
- i. SAME SWEET MARGARET.
- j. PEEP-A-BOO!
- k. GLAMOUR.
- l. ANNIE OAKLEY KNOWLES.
- m. WHAT GOES UP MUST COME DOWN.
- n. BETWEEN TWO SISTERS.



OUTSIDE OF CLASSES



MISS ESTELLE DAVIS, *President Woman's Student Government Association*





WOMEN'S STUDENT GOVERNMENT ASSOCIATION

OFFICERS

ESTELLE DAVIS (Seated) *President*
JANE VANN *Vice-President*
CAMILLE JERNIGAN *Treasurer*
JOYCE WATSON *Secretary*

THE WOMEN'S STUDENT GOVERNMENT ASSOCIATION of East Carolina Teachers' College affords its members a democratic means of governing. It is an organization that combines the efforts of all women students to promote the general welfare of the college. The student body and classes elect a council through which the student government functions.

THE COUNCIL

Seated: ARLINE MERCER, MARIBELLE ROBERTSON, DORIS HOCKADAY, CAMILLE JERNIGAN, HELEN FLYNN, HELEN MASSEY, ZALIA CARRAWAN.

Standing: DOROTHY SASSER, MARJORIE PRIVOT, DORIS BOSWELL, DOROTHY PEARSALL, ESTELLE DAVIS, VIRGIL WARD, JOYCE WATSON, CHRISTINE HELLEN, SUE PARKER, JERRY ALBRITTON, JANE VANN.





MEN'S STUDENT GOVERNMENT ASSOCIATION

OFFICERS

EVAN GRIFFIN (Seated) *President*
BILLY GREENE (Seated) *Treasurer*
JEROME BUTLER (Standing) *Secretary*

THIS YEAR HAS BEEN a successful year for the Men's Student Government. The Council was very instrumental in getting more rooms for the boys in Ragsdale Hall and it has constantly worked for other improvements for the benefit of the students and the college. Working together for unity and advancement has been its purpose.

J. C. SHEPHERD, BILLY GREENE, EVAN GRIFFIN, JEROME BUTLER, ARTHUR JACKSON, FRANCIS COINER, RUSSELL ROGERSON, RANDOLPH ROPER, SAMMIE STRICKLAND.





OFFICERS

CAROL LEIGH HUMPHRIES, *Vice-President*

CHARLOTTE SHEARIN *President*

HELEN STONE *Treasurer*

WILLIE MAE DANIELS *Secretary*

YOUNG WOMEN'S CHRISTIAN ASSOCIATION

FRESHMAN "Y" OFFICERS

BESSIE COUNCIL *Treasurer*

ELEANOR BOOTH *Secretary*

MARY WARREN *Vice-President*

PAULA ROSS *President*



THE YOUNG WOMEN'S CHRISTIAN ASSOCIATION for the year 1942-43 has tried to have a varied program and to help the members grow spiritually, socially, physically and mentally.

The Vespers have included students and guest speakers; the Negro Marine Choir; reports of Blue Ridge, Danforth Foundation Camp in Michigan; and N. Y. President's School; and discussions of the religions on the campus and the race question. The "Y" was also fortunate in having an African Missionary and German Refugee student to talk with us.

Through the Y. W. C. A., a foreign student was brought to the campus as a student for the first time. The first W. S. S. F. Drive was held this year also, the returns of the drive went to help students of all races all over the world, including Americans.

Through the quarterly entertainments, the members have had fun and fellowship together.

PURPOSE: *"We unite in the desire to realize full and creative life through a growing knowledge of God.
"We determine to have a part in making this life possible for all people.
"In this task we seek to understand Jesus and follow Him."*



DR. W. A. BROWNE,
Faculty Adviser

DR. R. L. HILLDRUP,
Faculty Adviser

YOUNG MEN'S CHRISTIAN ASSOCIATION



DOUGLAS ELEY,
*Recreational
Chairman*



SAM STRICKLAND,
*Scrapbook
Chairman*

ELLIS BEDSWORTH,
*Religious Education
Chairman*



FRANCIS COINER,
Publicity Chairman

WILLIAM COUNCIL,
Membership Chairman



W. B. HARRIS,
Student Welfare Chairman

J. C. SHEPHERD



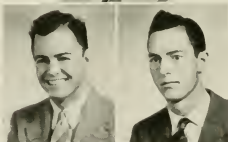
Treasurer

DONALD PERRY



Secretary

SAMMY CRANDALL,
President



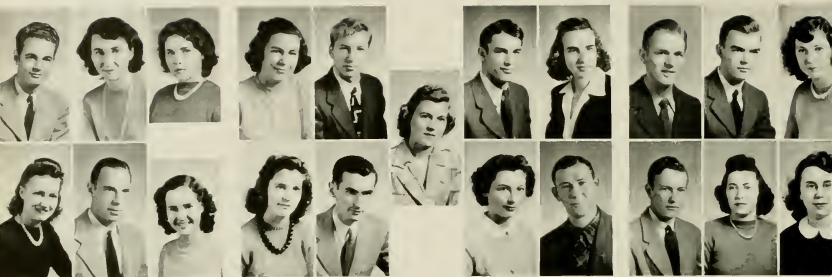
EDWARD BROWN,
Vice-President

TO PROMOTE THE SPIRITUAL LIFE on the campus, the Young Men's Christian Association of 1942, 1943 began its work by sending three of its cabinet members to the Blue Ridge Conference in Blue Ridge, North Carolina, June 6-13.

With the help of the Dean of Men during Orientation Week, the Student Welfare Committee placed all boys entering in conveniently located homes. During the year a recreational hour was arranged each quarter for all boys on the campus; an association meeting was held once a quarter; religious services were conducted weekly by the boys in Ragsdall Hall; and on Wednesday nights cabinet meetings were held. The Association secured membership pins for all members, contributed to the Red Cross, made a pledge to the National Y. M. C. A., and purchased a War Bond. The Young Women's and the Young Men's Christian Associations cooperated in carrying on the religious work on the campus. The two associations had Dean William J. Baird and Dr. Sherwood Eddy and guest speakers on the campus during the winter quarter.

Through its program the Young Men's Christian Association has worked in order that students might be inspired to live as Christians during their college days and throughout their lives.



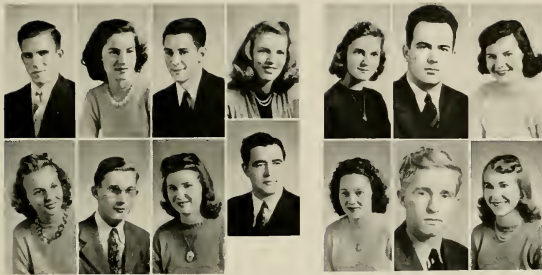


THE CHI PI PLAYERS, as an organization, has two objectives—to instruct members in the art of producing a play and to promote creative ability with the club. These objectives are combined in the presentation of varied types of plays in its annual program of productions. These productions have been noted for the professionalism shown throughout the entire play—from the smallest scene to the most dramatic—from the most minute piece of stage property to the most difficult set. The Chi Pi Players strive for perfection in a production. General criticism indicates that they reach their objective.



OPHELIA HOOKS,
President

DAVE OWENS
Vice-President

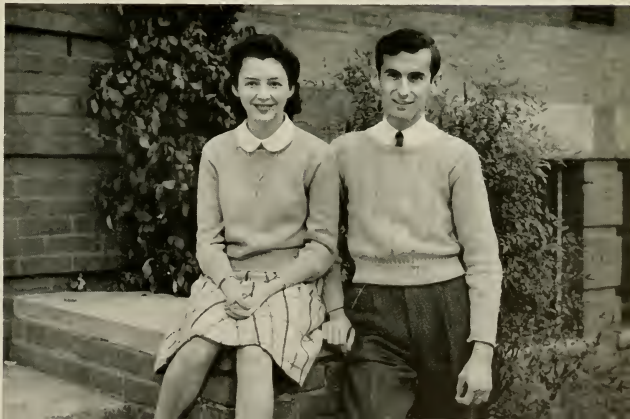


During the school year, 1942-1943, one of the players, Dave Owens, brought forth an original play. It is entitled "While Anubis Watched" and is a three-act mystery comedy. The club urges more creative efforts on the part of its members.

What the results from the following years will bring, we cannot say, but it is our promise that we will strive for perfection in a field which is rapidly growing—Dramatic Art.

HAZEL WILLIFORD,
Treasurer

DONALD PERRY,
Secretary





THE MUSIC DEPARTMENT of East Carolina Teachers was very successful in producing the opera "Martha" during the Winter Quarter under the direction of Mr. Denton Rossell. The Orchestra was directed by Mr. Alma Dittmer.

Pictured: Jean Abeyounis, seated, who played the part of Martha, Marie Walthal, Bobbie Lorraine Pritchard, who played Nancy, Morris Flow, and Mary Alice Charlton. Jim White, Jean Abeyounis, Ingram Walters, Martha and Nancy, Woman's Chorus, Scene at the Fair.

IN ACCORDANCE WITH THE GROWING DEMAND of music in this country, the college band is preparing its members to go out in various communities and build their own bands. The organization has built up a fine repertoire of music which offers its members helpful, as well as, enjoyable experience. This experience will not only familiarize the individual with many fine selections, but will aid him in organizing and conducting the future musicians of America.

THE BAND





THE COLLEGE A CAPPELLA CHOIR

THE COLLEGE A CAPPELLA CHOIR was organized to provide students on the campus with an opportunity to sing some of the beautiful mixed choral music. Its repertoire includes old polyphonic music of the Sixteenth Century, modern choral music, and many types between these extremes.

The College Choir, Woman's Chorus, and College Orchestra furnished music for this year's Christmas program, and during the spring quarter the Choir gave its annual concert.

The College Choir has advanced, and continues to do so, under the able direction of Mr. A. L. Dittmer, head of the Music Department.

THE WOMAN'S CHORUS is opened to all women students with voices of excellent quality. Each student is required to sing alone for the director before being permitted to enter the chorus. One hour credit is given for participation in the chorus, and many hours of pleasure is derived from three and four part singing in which the group specializes. This group helped with the music for the Christmas pageant, and supplied the chorus for the successful opera, "Martha," which was given during the winter quarter. During the spring the Woman's Chorus sings on the Commencement Recital and at the graduation exercises or the Baccalaureate Sermon. The chorus is under the direction of Miss Gussie Kuykendall.

WOMAN'S GLEE CLUB





YOUNG DEMOCRAT CLUB

THE PURPOSE OF THE Young Democrat Club of East Carolina Teachers' College is to create interest in the political affairs of the state and the nation. The club this year sent delegates to the sixth annual Student Legislature in Raleigh. The bill which was introduced by the group was passed. It was: To Draft Man Power for Labor in Industry, and War Work.

Jennings Ballard was made Sergeant-at-Arms in the House of Representatives and Metsel Simmons, President of the Club, was Chairman of the Finance Committee in the Senate.

THE PURPOSE OF THE International Relations Club, which was organized in 1940, is to encourage the study of international relations. The club is backed by the Carnegie Endowment, from which it receives books and other material on current problems.

The requirements for membership are credit for twenty-one hours in Geography, History and Social Science, and an average grade of at least "3" on all subjects. Members of the faculty in Geography, History and Social Science Departments may be associate members, but the programs at the regular monthly meetings are prepared by students.

Each year delegates are sent to the Southeast International Relations Conference.

INTERNATIONAL RELATIONS CLUB





THE JARVIS DEBATING CLUB

THE JARVIS FORENSIC CLUB, organized in 1938 under the name of the Jarvis Debating Club, has worked to interest the students of East Carolina Teachers College in debating and other phases of public speaking.

Last year the Club made its debut in Inter-Collegiate debating by debating Campbell College in a non-decision debate and by defeating Presbyterian Junior College in a decision debate.

This year the Debating Club sent a team to the Dixie Strawberry Leaf Tournament, held in Charlotte. This debating team won decisions over teams from the University of North Carolina, the University of Alabama, Davidson College, Bridgewater College, and Wingate College. It lost decisions to the University of Alabama and Wofford College. Members of the Debating Club debated North Carolina State College and the University of North Carolina at East Carolina Teachers College during the winter quarter.

Dr. M. N. Posey has been faculty adviser to the Club since it was first founded. Members of the Club willingly recognize that success in debate has been attained partly through Dr. Posey's constructive criticism and skillful leadership.

THE ENGLISH CLUB, with Dr. Lucile Turner as adviser, is an organization of English majors who meet and work together for the purpose of furthering their literary interests, of becoming acquainted with the best books and magazines, and of gaining knowledge of developments in the field of creative writing.

This year a series of miscellaneous programs, including reviews of recent books and magazines, studies of the lives of several writers, the playing of recordings of a Shakespearean play, and Christmas and initiation programs, were conducted by students and teachers. This series has been especially enjoyable and valuable to club members.

The Club meets in the well-equipped English Laboratory. This room contains a worth while collection of books and magazines, valuable files of clippings and pictures, a duplicator, a projector, a very good recording machine. It is open at all times to English students and has proved a great help to them in reading and studying.

THE ENGLISH CLUB





THE ASSOCIATION FOR CHILDHOOD EDUCATION

THE STUDENT BRANCH of the Association for Childhood Education at East Carolina Teachers' College is a member of the National Association for Childhood Education.

"The purpose of this organization shall be to gather and disseminate knowledge of the movement for the education of young children; to bring into active cooperation all childhood education interest, including parent education; to promote the progressive type of education in nursery school, kindergarten and primary grades, and to raise the standard of the professional training for teachers and leaders in this field."

THE ROBERT H. WRIGHT CHAPTER of the Future Teachers of America, under the sponsorship of Miss Emma L. Hooper, has placed its fourth seal on the Future Teachers of America Charter, signifying its success on the campus. Through the "Personal Growth Leaflets" we have found ways by which to mold our characters for "Future Teachers."

Other than wide and varied programs we have sewed for the Red Cross, given on a Defense Bond, and sent Easter cards to people in County Home.

FUTURE TEACHERS OF AMERICA





SIGMA PI ALPHA

THE PHI SIGMA CHAPTER of Sigma Pi Alpha is a national honorary fraternity for students of foreign languages. The ideals and aims of this club center around three symbolic words: strength, permanency and accomplishment.

The officers of the club are Joyce Dunham, President; Mary Emma Jefferson, Vice-President; and Elizabeth Kittrell, Secretary-Treasurer.

Other old members of the club are Mary Alice Blackham, LaVerne Cox, Mary Elizabeth Darden, Hazel Harris, Ida Johnson, Madge Lane, Hilda Martin, Zula Newman, Ruth Roach, Alma Simmons, Helen Thomas, Audrey White and Reid White.

During winter quarter the following new members were initiated into the club: Esther Mae White, RONALDA Lee, Katie Earl Owen, Mary Crawford, Paula Ross, Mozelle Hooks, Margaret Magill, Dorothy Jordan, Dorothy Maynard, Janice Lister and Dorothea Boyette.

Mr. R. C. Deal and Miss Marguerite Austin are the faculty advisers and they have done much to improve the success of the club.



PHI SIGMA PI FRATERNITY



Dr. Beecher Flanagan, Ingram Walters, Harry Jarvis, Clyde Mann, Metsel Simmons, Evan Griffin, Robert Martin, Francis Coiner, Dr. ReBarker, Dr. Hollar, Ray Sparrow, Z. W. Frazelle, Dr. Frank, Harold Taylor, John Murray, Nickolas Zuras, Charles Cushman, W. B. Harris, President.





THE COMMERCE CLUB

THE PURPOSE OF THE Commerce Club this year, as heretofore has been to better acquaint the students of the Commerce Department with each other, to foster interest in clerical work and in teaching, and to work together for the mutual benefit of its members and the Commerce Department as a whole.

The monthly programs of the Club consist of recreational programs, and programs that are informational and helpful to students in their work after graduation.

The outstanding event of the year was done by sponsoring a dance in order to buy War Bonds and also equipment for a reading room in the Commerce Department.

ZETA DELTA IS A CHAPTER of Alpha Iota, an International Honorary Business Sorority with chapters in most of the leading colleges and universities in the United States and Canada where Business Education is taught. Requirements for election to this Honorary Sorority are superior scholarship in commerce, leadership, personality and character.

Zeta Delta, the first sorority to be established on our campus, was organized on March 30, 1940, with twenty-four charter members.

During the year, the sorority has had several speakers at its monthly meetings who were well qualified to speak on topics pertaining to Business Education. In cooperation with the Commerce Club, the sorority sponsored a reading room for the commerce majors. In the spring, a number of new members were initiated into the sorority. Several members are planning to attend the National Convention in Milwaukee this summer.

ZETA DELTA CHAPTER OF ALPHA IOTA





SCIENCE CLUB

THE SCIENCE CLUB was organized in the fall of 1931 with a membership of 25. The membership has greatly increased since this time. Since the organization of this club, it has progressed rapidly. Many Science programs have been given by this club in which students, faculty and outsiders participated.

The Science Club is a member of the Student Science Clubs of America.

THE PURPOSE OF THE Home Economics Club, with Miss Margaret Sellman as its advisor this year, is to develop personality, leadership, initiative and poise. Attempting to do this, it is our hope that we may simply "serve our community, our schools and our families."

Believing strongly that the Home Economics girls play a great part in the war efforts, we selected as our theme for the year, "Home Economics Girls in Defense." Our speakers included members of the faculty, Mrs. Estelle Smith, Assistant State Home Demonstration Agent, and Miss Catherine T. Dennis, State Supervisor of Home Economics Education.

HOME ECONOMICS CLUB





MATHEMATICS CLUB

Purpose: To show the student the relation between mathematics, the greatest tool subject in the world, and his life as a whole.

Officers: Bessie Fay Hunt, President; J. C. Shepherd, Vice-President; Charlotte Wooten, Secretary-Treasurer; Elizabeth Kittrell, Reporter; Rebecca Pridgen, TECOAN Representative; Dorothy Shearin, Social Chairman; Miss Louise Williams, Adviser.

Members: Aldine Barnhill, Vivian Bass, Charlotte Bordeaux, Gretchen Boswell, Dorothea Boyette, Millison Bryant, Alton Buck, Edward Bright, Miss Ellen Caldwell, Leslie Chadwick, Nina Cook, Marie Darden, Allie M. Dilday, Annie Lee Eason, Myra Edmundson, Z. W. Frazelle, Miss Maria Graham, Sylvia Green, Bessie Fay Hunt, Sarah Hunter, Eddie Jones, Doris Lamm, Elizabeth Kittrell, Hilda Moore, Elmo Mayo, Rebecca Pridgen, Rachel Robertson, Dorothy Shearin, J. C. Shepherd, Eugene Smith, Doris Stevens, Thelma Stewart, Delia Rose Taylor, Fountain Taylor, Gwendolyn Ward, Miss Louise Williams, Sarah Willson, Charlotte Wooten.

THE A. D. AND S. CLUB serves as a connecting link between the college as it is now and as it was in the past. The students who are daughters and sons of the alumni strive to know the college that their mothers and fathers attended and preserve its history and best traditions and, also, to know it today so as to pass it on to them.

The Club has 60 members this year in comparison with the 25 last year. These meet once a month. The theme of the programs this year has been, "Know Your College." They have been instrumental in helping their fellow-students know the past in several ways. One was by having a booth at the World Student Service carnival displaying annuals, magazines, clippings, class records, and having the hostesses wear dresses of yesteryear.

The Alumni Daughters and Sons are always ready to aid the Alumni Association. They have served at an alumni tea, and are helping organize the alumni scrapbook.

The organization is assisted and guided by Miss Mamie Jenkins, faculty adviser and a charter member of our club.

ARLINE MERCER, *President.*

THE ALUMNI DAUGHTERS AND SONS CLUB





DOROTHY PEARSALL, FRANCES PHELPS, HELEN PAGE JOHNSON, BURCHIE SMITH, GARNETTE CORDLE, DORIS HOCKADAY, FRANCIS COINER, WILLIE MAE DANIELS, HAZEL HARRIS, RUBY CLIFTON, CAROLYN DIXON, MARY KATE SWAIN, INEZ SIMMONS, MARGIE DAVIS.

Publication at Work



PUBLICATIONS

THE TECOAN

JANIE EAKES *Editor-in-Chief*

LOIS SESSOMS *Business Manager*



MEMBERS OF STAFF AT WORK

CHRISTINE HELLEN, *Associate Editor*
JANIE EAKES, *Editor*
ANNE POYTHRESS, *Associate Editor*

HAZEL YELVERTON, *Business Staff*
LOIS SESSOMS, *Business Manager*
DOT DAVIS, *Business Staff*



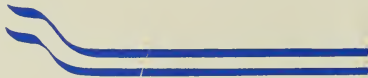
OF 1943

THE STAFF OF THE 1943 TECOAN has tried to publish an annual that each member of the Student Body will enjoy. They wish to express their thanks to Mr. B. K. Deighton of the Charlotte Engraving Company and Mr. Frank Fleming of the Lassiter Press in Charlotte.

Also the staff expresses appreciation to Dunbar Studios in Charlotte, Beverly Whitley and Sidney Dunn from the Greenville High School, who took pictures for the annual, and to Dr. E. R. Browning and Dr. R. J. Slay, faculty advisers.

DOROTHY DAVIS, LOIS SESSOMS, JANIE EAKES, BONNIE DAVIS, LILLIAN BOYETTE, CHRISTINE HELLEN, KATHLEEN AYCOCK, DORIS HOCKADAY, ANNE POYTHRESS, VIVIAN YELVERTON, HAZEL YELVERTON, CHARLOTTE ELLIOTT.





Mrs. O. W. Eakes

Greenville, N. C.



Mrs. J. C. Sessoms

Ahoskie, N. C.



TECO ECHO



ROSALIE BROWN
Editor



HARRY JARVIS
Business Manager



TECO ECHO STAFF

JEAN GOGGIN, RUBY WHITE, PAT EDWARDS, BERNICE JENKINS, MARGARET LEWIS, DOROTHY PEARSALL, HELEN PAGE JOHNSON, ROSALIE BROWN, MARGIE DUDLEY.

IN THE FACE OF DICTATORS and aggressors the college press has rolled on during the past year. Former students and members of the staff have taken their places in the armed services of our great country. Some of them have given their lives for the traditions we uphold: Freedom of Speech, Freedom of Religion, and *Freedom of the Press*. The policy of the *Teco Ecbo* has been to print the news of and for the campus and alumni, to give the students what they want by way of features and special columns, and to offer future journalists and teachers experience in news writing.



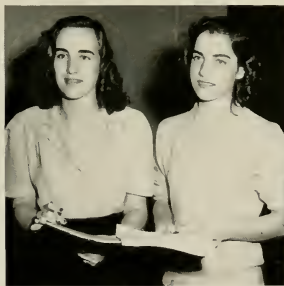
ROSALIE BROWN,
Editor

MARGIE DUDLEY,
Editorial Staff

Seated:

HARRY JARVIS,
Business Manager

CHARLES CUSHMAN,
Business Staff



PIECES O' EIGHT

THE TREND OF THE "Pieces O' Eight" for the past year has been toward the freer acceptance of contributions from among the student body. In this way, we have uncovered much new talent. While providing a healthy escape from the insistent thoughts of war, in parts of our magazine we have, nevertheless, had quite a few thought-provoking and informative articles and stories on this subject. We have tried and shall continue to try, both to broaden and to heighten the outlook of our magazine, and to make it one in which every student will take an interest.

BURCHIE SMITH,
Business Manager



GARNETTE CORDLE,
Editor



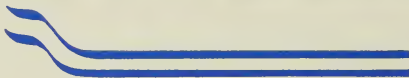


BOBBIE LORRAINE PRITCHARD
Chief Marshal

SOCIETIES

OFFICERS

ANNE POYTHRESS *President*
HAZEL YELVERTON *Secretary*
VIVIAN YELVERTON *Vice-President*
PAT EDWARDS *Treasurer*



POE SOCIETY

THE EDGAR ALLAN POE SOCIETY has a membership of 140 this year. Our first big feature for the year was to sponsor the Fall Dance. Since the dance came just before Christmas holidays, we used the Christmas theme for the occasion. We were quite proud of our Christmas tree and Santa Claus.

The next feature was at Meredith College. We obtained many good ideas and learned how societies worked.

The Society has also played a part in the war effort by helping in the Red Cross room, helping issue ration books, and buying war stamps.

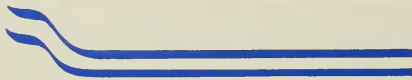
Poe Sponsors

ANNE POYTHRESS, HELEN THOMAS, DOT JOHNSON,
ADMINTA EURE, CAMILLE JERNIGAN.



OFFICERS

HILDA MARTIN *President*
CAROL LEIGH HUMPHRIES, *Vice-President*
SADIE RUTH SUTTON *Secretary*
FAYE EVERETTE *Treasurer*



EMERSON SOCIETY

THROUGHOUT THE SCHOOL YEAR 1942-1943 the Ralph Waldo Emerson Literary Society has sought to instill within the minds and hearts of its members a more thorough and deeper appreciation for Emerson—that great essayist and poet!

Evidence of this may be recognized by the programs which we have had in presenting the life of Emerson. Several essays on "Manners," "Giving" and "Love" were discussed and each member was urged to read at least one of these essays during the year. At a number of regular meetings, quotations from Emerson have been read by members in answer to the roll call.

The success of the Emerson Society may also be recognized by the efficiency and cooperation with which the annual winter dance was sponsored, having had the motive for the dance in memory of George Washington.

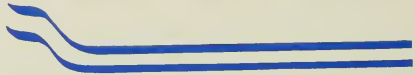
Emerson Sponsors

BLANCHE CRISP, JANE VANN,
HILDA MARTIN, MARY BRYAN, NELL McCULLEN.



OFFICERS

ALINE CADE	<i>Secretary</i>
DOROTHY DAVIS	<i>President</i>
DOROTHINE MASSEY	<i>Vice-President</i>
GRETCHEN WEBSTER	<i>Treasurer</i>



LANIER SOCIETY

THE LANIER LITERARY SOCIETY, named for the loved poet Sidney Lanier, speaks for itself in its motto: "To know the clever, good and wise, but haunt the lonesome heights of art."

The object of this society is to further the mental, moral and social development of each member, and to create a greater love for the best in literature, music and art.

This year the Lanier's entire program has been directed toward the war effort. Aside from giving individual time and help to the Red Cross, they have also purchased two war bonds. In keeping with the victory idea, they sponsored a lovely spring dance during the latter part of spring quarter, put on in patriotic style.

The year 1942-43 has proven to be a big year for the Laniers. The big family has had a wonderful time together and has ended a very successful year.

Lanier Sponsors

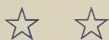
DOROTHY DAVIS, BETTY BATSON,
HELEN MASSEY, ZALIA CAROWAN.





O. A. HANKNER AND COACH JOHN CHRISTENBURY.

ATHLETICS



CHEERLEADERS

EVELYN LEWIS, RUTH BOSTIAN, DONEY JONES, LOIS SESSOMS,
ELNA POWELL, HARRY JAVIS; CHIEF CHEERLEADER, CHARLES
CUSHMAN.





VARSITY CLUB

THE VARSITY CLUB is made up of men students who have earned a letter in one or more inter-collegiate sports. However, due to there being no such activities this year, only seven new members have been taken in, last year's lettermen in baseball and tennis.

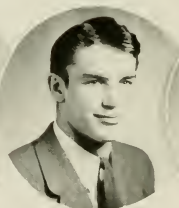
This year's activities consisted of checking coats and hats for the President's Birthday Ball; the customary mid-winter square dance to which everybody was invited; and the annual formal dance which was held in March instead of May.

The Varsity Club awards each member a ring in his senior year. This year ten rings were awarded.

Due to so many fellows going into the service, this may be the one club that will not be active until after the war, but we are sure that when things are straightened out "over there," East Carolina Teachers' College will again prosper successfully in Athletics and the Varsity Club will be larger than ever.



BILL LUCAS
President



WILLIAM GREENE
Vice-President

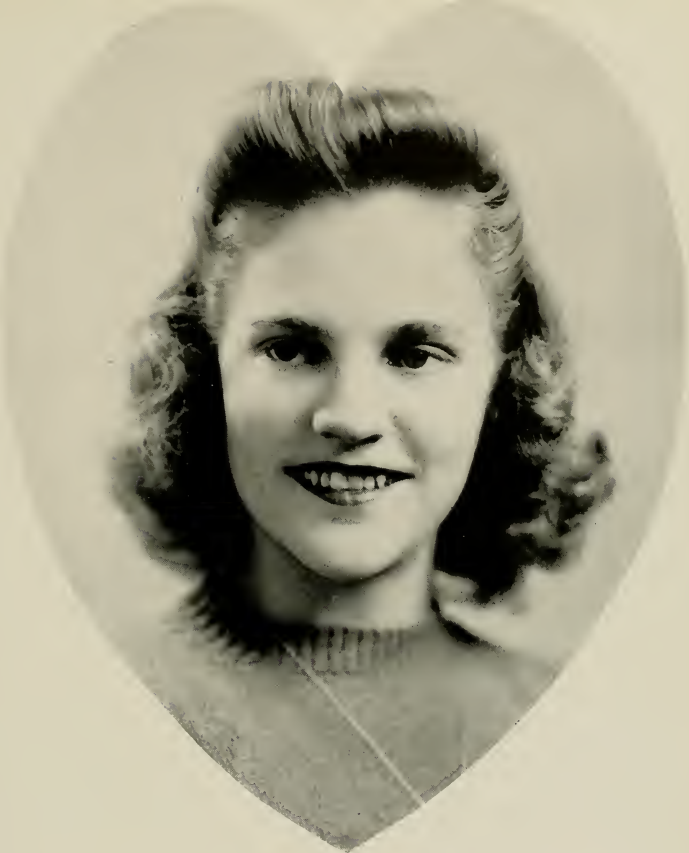


RUSSELL ROGERSON
Secretary-Treasurer



NANCY AND BOB

Miss
NANCY
WYNNE,
Bethel,
North
Carolina



VARSITY CLUB
SWEETHEART

INTRAMURAL



ROBERT YOUNG, *Captain*



DUE TO THE WAR CONDITIONS, East Carolina Teachers College did not have a Varsity Basketball team this year. However, they did have Intramural teams.

During the Basketball season, the four intramural teams played games each week in the gymnasium.

WILEY BROWN

W. B. HARRIS

CLYDE MANN

JACK YOUNG

FLOYD WOODY

NICK ZURAS



BASKETBALL

Besides the weekly Intramural games, the Basketball teams did play two varsity games with Atlantic Christian College in Wilson, North Carolina, in which they were defeated in both.

Basketball, and probably all other athletics, will be only intramural until after the war, but these teams are building up much school spirit.



WILLIAM GADY

SAMUEL CRANDALL



RUSSELL ROGERSON

DOUGLAS JONES

RANDOLPH ROPER



WILLIAM "HANK" COUNCIL	<i>Pitcher</i>
RICHARD GAULDIN	<i>Pitcher</i>
WILLIAM STANFIELD JOHNSON	<i>Pitcher</i>
WARREN ALDRIDGE	<i>Pitcher</i>
BRANT WATERS	<i>Short Stop</i>
BILL LUCAS	<i>Manager</i>

BASEBALL



COACH CHRISTENBURY



CHARLES FUTRELL, *Captain*



WILEY BROWN	Center Field
RAY SISK	Catcher
ROBERT YOUNG	Right Field
NORMAN MAYO	Left Field
W. B. HARRIS	First Base
SAMMIE CRANDALL	Right Field



BASEBALL TEAM.



MISS DOROTHY PARKS, *Our Guiding Star.*

IN YOU WE PLACED our trust for guidance into undertakings which were difficult for us—the inexperienced. You have never "let us down" or refused your capable assistance when we needed you. We could never have succeeded without you. The memories of you will always be cherished ones.



WOMAN'S ATHLETIC ASSOCIATION

THE WOMAN'S ATHLETIC ASSOCIATION is one of the most outstanding organizations on our campus. We have contributed to the National Bond Drive, the Infantile Paralysis Campaign, and sponsored the World Student Service Fund.

Under the direction of our Adviser, Miss Dorothy Parks and our President, Louise Lindsay, we have had a very successful year. The annual dance and beach trip were highlights of the year.

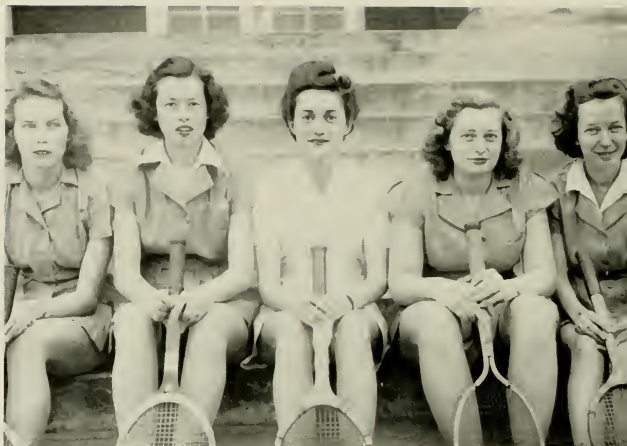
The Association sponsors an intramural program consisting of field hockey, soccer, volley ball, basketball, softball, tennis, archery, hiking and individual sports.

Each sport is climaxed by the selection of an honorary varsity.



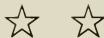
LOUISE LINDSAY, *President*
 MICKY BOYETTE, *Secretary*
 PEARL HOUSE, *Vice-President*
 RUTH HALL, *Treasurer*

VIRGINIA KNOWLES
GRACE WESTBROOK
DOROTHY PEFL
ESTHER MAE PARKER
VIRGINIA LEE BLEDSOE



TENNIS

ONE OF THE MAJOR SPRING SPORTS at East Carolina Teachers' College is Tennis. Most of the W. A. A. girls participate in this sport. Pictured above are the girls who make up the Varsity Tennis Team.



SOFTBALL, TOO, IS A MAJOR SPRING SPORT at East Carolina Teachers' College.
Pictured is the Varsity Softball Team.



SOFTBALL



First Row:

VIRGINIA LEE BLEDSOE
VIRGINIA KNOWLES
DOROTHY PEEL
EUNICE HERRING
ESTHER MAE PARKER

Standing:

FRANCES LEGGETT
ANNIE BRITTON BARTHOLEMEW
MARY LOUISE LINDSAY
PEARL HOUSE
DIXIE CHAPPELL

INTRA-

W. A. A. Cabinet

NELL LOUISE MURPHY
MARY ANNA BROWN
FRANCES LEGGETT
BONNIE DAVIS
ANNIE BRITTON BARTHOLEMEW
ADMINTA EURE
VIRGINIA LEE BLEDSOE
JANE BEACHUM
CLAIRE JENKINS
ESTHER MAE PARKER
ERNESTINE VINSON

Field Hockey

GRACE WESTBROOK
AMANDA ETHERIDGE
LOUISE LINDSAY
ESTHER MAE PARKER
VERNA CARRAWAY
EUNICE HERRING
JUSTINE GURLEY
PEARL HOUSE
NELL LOUISE MURPHY
FRANCES LEGGETT
VIRGINIA KNOWLES
DOROTHY PEEL
VIRGINIA LEE BLEDSOE

Soccer

VIRGINIA KNOWLES
DOROTHY SHEARIN
VIRGINIA LEE BLEDSOE
FRANCES LEGGETT
DIXIE CHAPPELL
LUCY WINSTON
DOROTHY PEEL
EUNICE HERRING
NELL LOUISE MURPHY
AMANDA ETHERIDGE
LOUISE LINDSAY
ESTHER MAE PARKER

MURALS

RACHEL ROBERTSON



Basketball

VIRGINIA KNOWLES
FRANCES LEGGETT
VIRGINIA LEE BLEDSOE
AMANDA ETHERIDGE
LILLIAN BOYETTE
NANCY WYNNE
LOUISE LINDSAY
JUSTINE GURLEY
EUNICE HERRING
JANE BEACHUM
DOROTHY PEEL
PEARL HOUSE



Volley Ball

LUCY WINSTON
EUNICE HERRING
ESTHER MAE PARKER
VIRGINIA LEE BLEDSOE
VIRGINIA KNOWLES
LOUISE LINDSAY
AMANDA ETHERIDGE
DOROTHY SHEARIN
DIXIE CHAPPELL
FRANCES LEGGETT

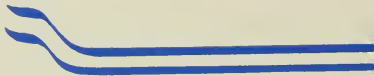


The Features for the 1943 Tecoa were elected by the Senior Class as the six most outstanding seniors. Their capability, leadership, scholarship, dependability and personality were taken into consideration.

FEATURES

SINCE MISS RISE STEVENS was one of the most outstanding personalities which appeared on our campus, we have chosen her to introduce our features.





Miss Estelle Davis

Seaboard, N. C.



Miss Laura Faye Wood

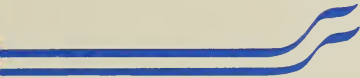
Black Creek, N. C.



Miss Bessie Fay Hunt

Wilmington, N. C.

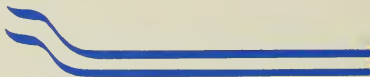




Miss Virgil Ward

Williamston, N. C.





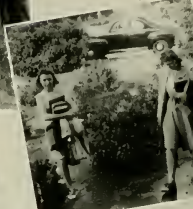
Miss Mary Long Ford
Franklinton, N. C.



Miss Joyce Dunham

Wilmington, N. C.

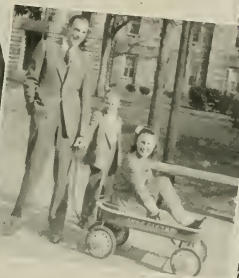




HOW'D YOU DO IT, COLONEL?
 "V" FOR VICTORY.
 HOPE IT DOESN'T GO OFF!
 THE "JIRINES" HAVE LANDED.
 INSEPARABLE.

FLEMING HALL GIRLS.
 WE GOT IT ON THEM.
 IT WOULD RAIN!
 IN A HURRY.
 PRIORITIES ON PARADE.
 BEAUTIES AT STUDY.

NOW, NOW—GIRLS!
 SUCH AFFECTION.
 MARINE HUNTING.
 JUST A CROWD.
 STRETCHED OUT.



WATCH OUT, HAZEL!
THREE OF A KIND.
BRINGING UP THE REAR.
MUST BE THE CONVERTIBLE.

HOW THEY LOVE TEACHER.
FATHER AND FAMILY.
AIN'T TRUCKIN' ANY MORE.
PRETTY SNOW??!
A BIT NOSEY!

AIN'T WE CUTE?
FLYING SECRETARY.
TWO MEN—Wow!!!!!!
E. C. T. C.'s TRIPLETS.



THE SLEEPING BEAUTY?
WHERE'S THE FOOD?
CUTE TEDDY BEAR!

HAPPY BIRTHDAY!
NOT SICK?
SOME DREAMS.

TWO OF THE FAMILY.
SMOOCH GALLERY.
IMAGINE.



SOME SHOOTING!
THE RED HEAD.
JUST POSING.
STUDIOUS—MAYBE?

IT MUST BE SPRING.
SHO' 'NUFF.
"GWEN."
INEZ.
CUTE GIRL.

PAT AND PUP.
"MID."
HAPPY?
PLAIN OLE SUE.



ESTELLE AND JEROME.
BOB AND NANCY.
MICKEY AND JIMMY.
HELEN AND BILL.

MID AND RUDY.
DOUG AND RUTHIE.
BILL AND RUTHIE.
MARTHA AND GEORGE.

SHORTY AND JACK.
BEATRYCE AND EARLE.
ROBERT AND ROENA.
JOE AND KATHRYN.



HANDSOME.
BEAUTIFUL LEGS.
SOME SPORT!

WAITING!
SECOND CHILDHOOD.
NEED A TEACHER?
SWEET LITTLE CHARLIE.

BIG FISH.
"FRESH."
"COLONEL."

Congratulations

TO THE
GRADUATES OF 1943

We Are Proud of Your
Accomplishment!

May Your Future Be Filled
With Success and Happiness!

Belk-Tyler Company

"Eastern Carolina's Shopping Center"

GREENVILLE

NORTH CAROLINA

The College
Stationery Store
and
Soda Shop

•
*Congratulations,
Seniors*

BEST JEWELRY COMPANY

"Eastern Carolina's Leading Jeweler"

Established 1901

QUALITY . . . VALUE . . . SERVICE

"Your Jewelers"

Congratulations and Best
Wishes from

BISSETTE'S
DRUG STORE, Inc.

427 Evans Street

"Greenville's Finest Drug Store"

Save and Have

HOME BUILDING AND LOAN ASSOCIATION

403 Evans Street

GREENVILLE

NORTH CAROLINA

"Bowl for Health's Sake"

— AT —

GREENVILLE HEALTH CENTER

H. B. SOMMER, Manager

HOME FURNITURE STORE

"Right Price Furniture Store"

J. A. COLLINS, Manager

701 Dickinson Ave. Greenville, N. C.

Compliments of

GUARANTY BANK AND TRUST CO.

Established 1901

Time Tested

Member Federal Deposit Insurance Corp.

ROUSE PRINTERY

Office Supplies . . . Stationery

Printing . . . Engraving

For the Best

In Foods

HONEYCUTT'S MARKET

STOP!

WILLIAM'S

The Ladies' Store

GREENVILLE NORTH CAROLINA

Compliments of

GREENVILLE WHOLESALE CANDY CO.

GREENVILLE NORTH CAROLINA

Congratulations to

Seniors of 1943

**GREENVILLE
CHAMBER OF COMMERCE**

Congratulation Seniors

and

For Your Health's Sake

LIVE BETTER . . . LIVE ELECTRICALLY

**GREENVILLE UTILITIES
COMMISSION**

Compliments of

SUNSHINE CLEANERS

J. C. YOUNGBLOOD, Proprietor

GREENVILLE NORTH CAROLINA

The Best
Hot Dogs in Town

DIXIE LUNCH

Keep Trim

or

PALACE BARBER SHOP

Compliments of

ROSES' 5, 10 & 25c STORE

Where Southern
Hospitality Blends
With An Air of
Refinement



Olde Towne Inn

East Carolina's
Finest and Most
Complete
Department
Store



**BLOUNT-
HARVEY**

SCOTT'S DRY CLEANERS

One Block Back of Post Office

... We Satisfy ...

PAUL A. SCOTT, Mgr. GREENVILLE, N. C.

**GREENVILLE FLORAL
COMPANY**

Telephone 2827

315 Cotanche St.

Congratulations

From

WHITE CHEVROLET CO.

Compliments of

BRODY'S

Ladies' Department Store

GREENVILLE

NORTH CAROLINA

LAUTARES BROS.

... JEWELERS ...

Watches, Jewelry, China Gifts

— Watch and Clock Repairing —

COBURN'S SHOES, INC.

"Your Shoe Store"

GREENVILLE

400 Evans Street

NORTH CAROLINA

EFIRD'S DEPARTMENT STORE

"Sells It For Less"

GREENVILLE

NORTH CAROLINA

TAKE A TIP!
DRINK A TIP!

TIP BOTTLING COMPANY

GREENVILLE

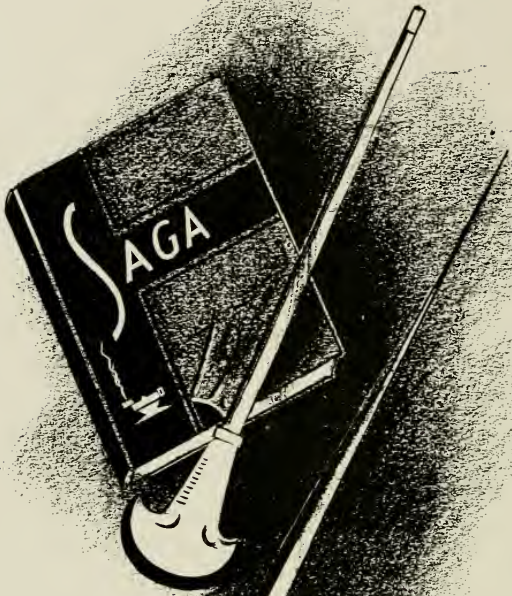
NORTH CAROLINA

DUNBAR STUDIO

Fine Portraits

228½ N. Tryon Street
Charlotte, N. C.

OFFICIAL PHOTOGRAPHERS
FOR
The 1943 TECOAN



CHARLOTTE ENGRAVING CO.

School Annual Engravers

Charlotte, North Carolina

SCHOOL PUBLICATIONS



Printers of
The 1943 Tecoan



The LASSITER PRESS, Inc.
CHARLOTTE, NORTH CAROLINA

the 1980s, the number of species of birds and mammals has increased, and the number of species of plants has decreased.

There are several reasons for this. First, the number of species of birds and mammals has increased because of the increase in the number of species of birds and mammals that are native to the island.

Second, the number of species of plants has decreased because of the increase in the number of species of plants that are introduced to the island.

Third, the number of species of birds and mammals has increased because of the increase in the number of species of birds and mammals that are introduced to the island.

Fourth, the number of species of plants has decreased because of the increase in the number of species of plants that are introduced to the island.

Fifth, the number of species of birds and mammals has increased because of the increase in the number of species of birds and mammals that are introduced to the island.

Sixth, the number of species of plants has decreased because of the increase in the number of species of plants that are introduced to the island.

Seventh, the number of species of birds and mammals has increased because of the increase in the number of species of birds and mammals that are introduced to the island.

Eighth, the number of species of plants has decreased because of the increase in the number of species of plants that are introduced to the island.

Ninth, the number of species of birds and mammals has increased because of the increase in the number of species of birds and mammals that are introduced to the island.

Tenth, the number of species of plants has decreased because of the increase in the number of species of plants that are introduced to the island.

Eleventh, the number of species of birds and mammals has increased because of the increase in the number of species of birds and mammals that are introduced to the island.

Twelfth, the number of species of plants has decreased because of the increase in the number of species of plants that are introduced to the island.

Thirteenth, the number of species of birds and mammals has increased because of the increase in the number of species of birds and mammals that are introduced to the island.

Fourteenth, the number of species of plants has decreased because of the increase in the number of species of plants that are introduced to the island.

Fifteenth, the number of species of birds and mammals has increased because of the increase in the number of species of birds and mammals that are introduced to the island.

JOYNER



30372 0104 0232 6

