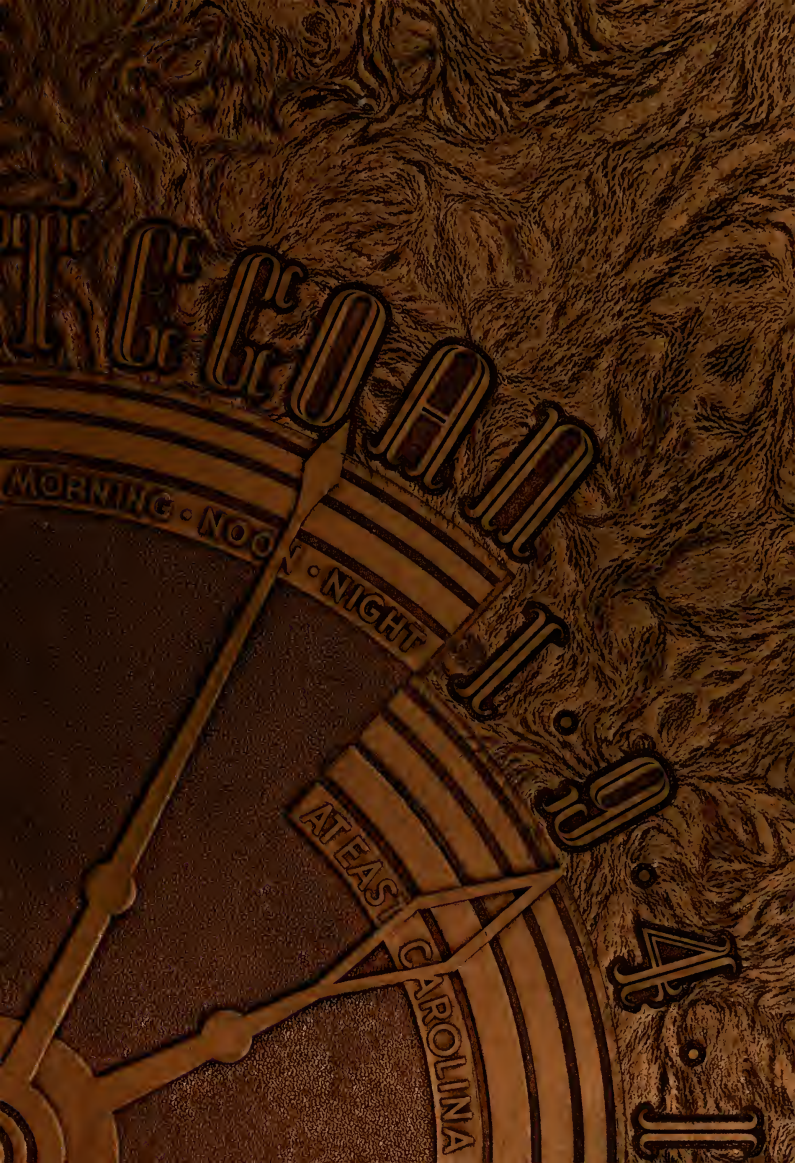


THE GEOGRAPHICAL  
MORNING · NOON · NIGHT  
AT EAST CAROLINA  
A · I · I











III  
TURN BACK

the CLOCK III

BETTY KEUZENKAMP  
EDITOR

LALLAH B. WATTS  
BUSINESS MANAGER



*Presented by*





# 1941 YEARBOOK of E.C.T.C.

Published Annually By The Student Body of  
East Carolina Teachers College • Greenville, N. C.

# "Turn Back the Clock"

E. C. T. C.

From Twelve to Twelve, life at East Carolina Teachers College is full of happenings, some sad and some gay, but each and everyone of us would not give up our four years of college life.

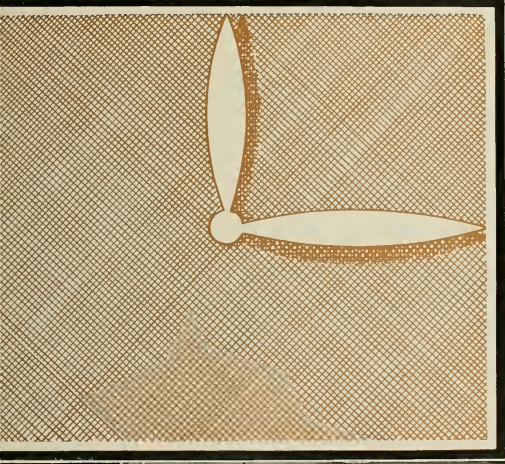
Some of you think college is hard, studies and restrictions filling up your day. But twenty years from now when you take down this annual to look back over your college career, and see our theme, we hope it will help you to "turn back the clock" of Time.

Each college career is divided into four distinct divisions. You Seniors have just finished the "College Clock", whereas you Juniors are only three-fourths way around the "Clock". Sophomores and Freshmen, you may only fill up the first half of our "College Clock", but in only a few years you will be where the Seniors are today.

Make every one of your minutes in the "Clock of College" count.

B. K.





296998

1941  
1941  
1941  
1941  
1941  
1941

## DEDICATION

To The Honorable F. C. Harding, friend and counselor we, the students of East Carolina Teachers College, affectionately dedicate the 1941 edition of  
the TECOAN.



THE HONORABLE F. C. HARDING

1910





## CAMPUS SCENES







FUTURE CAMPUS SCENES WILL CHANGE BUT  
THESE VIEWS WE SHALL NEVER FORGET





## CAMPUS SCENES







**DR. LEON R. MEADOWS**  
**President**

Thus far your life has been spent in what is generally known as the period of preparation; soon you will leave college for the purpose of taking upon your shoulders the full duties and responsibilities of adult citizenship. We hope and have cause to believe that you will take with you the ability to solve many of the problems that now face civilization, and the courage to undertake bravely their solution; successful efforts in this task will require knowledge, cooperation, character, tolerance, wisdom, and a proper sense of justice to others.

Your Alma Mater wishes for you the best that you are worthy to receive.

*LEON R. MEADOWS, President.*



## ANNIE L. MORTON

Dean of Women

Many of our grandmothers were great believers in patchwork quilts. "These little pieces of cloth represent the family", they would say. In the quilts some squares were finer than others depending upon the workmanship and materials used.

In many respects our college standards and traditions resemble a patchwork quilt. Each is the outgrowth of some idea or ideal of former members of our college family. What contribution have you made?

## DR. HERBERT REBARKER

Dean of Men

The yesterdays in ceaseless, stern array  
Recede into the ever-lengthening past;  
In the flaming forge of fate each one is  
cast,

Each moulded in the likeness of today,  
Tomorrow's vital link with yesterday.  
The noisy film of passing time fleets fast  
On the silent screen of life, until at last  
The imagery dims and quickly fades  
away.

Each yesterday is but a mute portrait  
Of joys and ills, fond hopes, good deeds  
and bad,

Kind thoughts, sweet dreams, ambition,  
love and hate,

All interwoven in the fabric's plaid.  
With the backward turn of the fateful  
hands of time

The yesterdays reveal our life's design.





# The FACULTY

DR. LUCILLE TURNER, Director of Instruction, *English*; MISS MAMIE JENKINS, *English*; MISS LOIS GRIGSBY, *English*; MISS EMMA L. HOOPER, *English*; DR. DENVER BAUGHAN, *English*; MISS MARY GREENE, *English*; DR. M. N. POSEY, *English*; DR. HERBERT REBARKER, Director of Instruction, *Mathematics*; MISS LOUISE WILLIAMS, *Mathematics*.



MISS ELIZABETH ENGLAND, *Mathematics*; DR. R. J. SLAY, Director of Instruction, *Science*; DR. R. C. BRANDT, *Science*; DR. CHARLES REYNOLDS, *Science*; DR. W. S. DELOACHE, *Science*; DR. O. C. WILTON, *Science*; MISS MARY CAUGHEY, *Science*; MR. R. C. DFAL, Director of Instruction, *French*; MISS MARGUERITE AUSTIN, *French*.



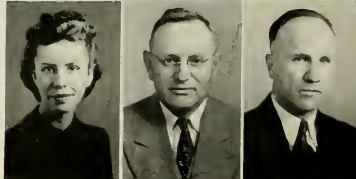
MR. ELMER BROWNING, Director of Instruction, *Commerce*; MISS LENA C. ELLIS, *Commerce*; MISS VELMA LOWE, *Commerce*; MISS AUDREY DEMPSEY, *Commerce*; DR. A. D. FRANK, Director of Instruction, *History*; MISS LAURA ROSE, *History*; DR. R. L. HILLDRUP, *History*; MR. E. C. HOLLAR, *History*; MR. M. L. WRIGHT, *Sociology*.



DR. BEECHER FLANAGAN, *Economics*; DR. PAUL TOLL, *Economics*; DR. E. L. HENDERSON, Director of Instruction, *Administration and Supervision*; DR. CARL L. ADAMS, Director of Instruction, *Psychology*; MISS ANNIE NEWELL, *Education*; MISS LUCILLE CHARLTON, *Education*; DR. HUBERT C. HAYNES, *Education and Psychology*; MISS DORA COATES, Director of Supervision, *Primary and Grammar Grades*; MISS KATE LEWIS, Director of Instruction, *Art*.



MISS VIDA MARIE VICKS, *Art*; MR. PARNELLE PICKLESIMER, Director of Instruction, *Geography*; DR. BROWN, *Geography*; MR. J. B. CUMMINGS, *Geography*; MISS RUBY SHOLTZ, *Home Economics*; MISS EVELYN ROGERS, *Home Economics*; MISS PEARL CHAPMAN, *Home Economics*; MRS. ETHEL REID WATTERS, *Home Economics*; MISS MOBEL LACY, *Home Economics*.





# The FACULTY

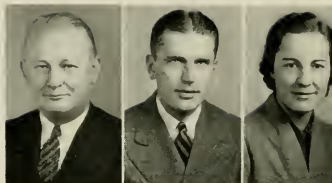
MR. WILLIAM MCHENRY, *Industrial Arts*; MR. O. A. HANKNER, Director of Instruction, *Physical Education*; MISS HELEN MCLWAIN, *Physical Education*; MR. JOHN B. CHRISTENBURY, *Physical Education*; MR. A. L. DITTMER, Director of Instruction, *Music Education*; MISS LOIS V. GORRELL, *Music Education*; MISS GUSSIE KUYKENDALL, *Music Education*; MR. DENTON ROSSELL, *Music Education*; MISS MARGARET SAMMON, *Assistant Librarian*; MR. VESTER MULHOLLAND, Principal Senior High School, *English*.

MISS DEANIE BOONE HASKETT, Critic Teacher, *English*; MR. R. G. WALSER, Critic Teacher, *English*; MR. JUDSON WHITE, Critic Teacher, *English and History*; MISS COOPER BELL, Critic Teacher, *Science*; MR. ELMER ROBINSON, Critic Teacher, *Science*; MISS IMOGENE RIDDICK, Critic Teacher, *French*; MISS LAURA BELL, Critic Teacher, *Commerce*; MISS EVELYN BUCHANNAN, Critic Teacher, *Mathematics*; MISS ESTELLE GREENE, Critic Teacher, *Mathematics*; MR. CUNNINGHAM, Critic Teacher, *History*.

MR. BO FARLEY, Critic Teacher, *Physical Education*; MISS FRANCES WAHL, Principal, *Training School*; MISS RUTH FAISON, *First Grade*; MISS ANN REDWINE, *First Grade*; MISS CHRISTINE JOHNSON, *Second Grade*; MISS LUCY NULTON, *Second Grade*; MISS EUNICE MCGEE, *Third Grade*; MRS. LINDSAY SAVAGE, *Third Grade*; MISS LOUISE GALPHIN, *Fourth Grade*; MISS ALMA BROWNING, *Fourth Grade*.

MISS CLEO RAINWATER, *Fifth Grade*; MISS HYMAN, *Sixth Grade*; MISS COBB, *Sixth Grade*; MISS KATHLEEN PLUMB, *Seventh Grade*; MR. F. D. DUNCAN, *College Treasurer*; MRS. OWENS, *Treasurer's Assistant*; MR. RUFUS JOHNSON, *Treasurer's Assistant*; MISS HAZEL WILLIS, *Secretary*; MISS OLA ROSS, *Assistant Registrar*; MRS. AGNES BARRETT, *Secretary to the President*.

MISS STELLA GROGAN, *Superintendent of the Infirmary*; MISS MARY LEA SMITH, *Assistant Superintendent of the Infirmary*; MISS RUTH WHITE, *Dormitory Matron*; MISS MARY CHEATHAM, *Dormitory Matron*; MISS ELIZABETH SMITH, *Assistant Dean of Women*; MISS ARLIE V. MOORE, *Supervisor of Buildings*; MRS. L. L. REEVES, *Stewardess to Dining Hall*.







# IN MEMORIAM



## MRS. M. N. POSEY

*We will be patient, and assuage the feeling  
We may not wholly stay;  
By silence sanctifying, not concealing,  
The grief that must have way.*

H. W. L.

# IN MEMORIAM



## MR. DEAN TABOR

*O gift of God! O perfect day:  
Whereon shall no man work, but play:  
Whereon it is enough for me,  
Not to be doing, but to be!*

# CLASSES

SEPTEMBER

*til*

JUNE

10



9



8



7

12

1



2



3

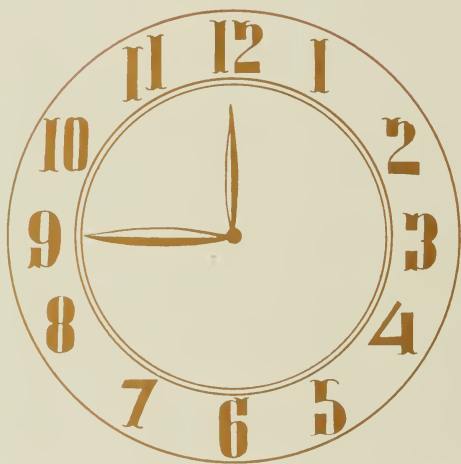


4

6

5

"12 o'clock midnight . . .



*Officers*

back to 9 o'clock"



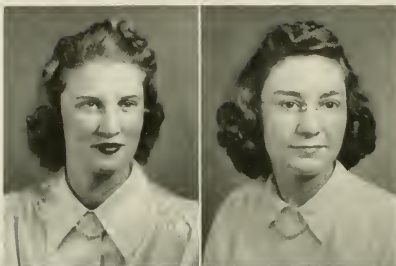
MAISIE CASTLEBERRY  
President

D. ANDREWS  
Vice-President

MATTIE DAVIS  
Secretary

REECCA SHANKS  
Treasurer





# SENIORS

LILLIAN ABEЕ  
Greenville, N. C.  
*History and Social Science*

PAULINE ELIZABETH ABEYOUNIS  
Greenville, N. C.  
*French and English*

St. Joseph's College 1; English Club 2, 3, 4, President 4; Poe Society 2; Glee Club 2, 3, 4; Phi Sigma 3, 4, President 4; Speech Choir 2, 3; Chi Pi 3, 4; Chi Pi Play 3; Associate Editor Teo Echo 4; Senior Play, World Premier of Ramona.

MADELINE ADAMS  
Grimesland, N. C.  
*History and English*

English Club 2, 3, 4; Teo Echo Reporter 4; International Relations Club 3, 4; Vice-President 4; Methodist Student Association 2, 3, 4; Circle Captain 4; Emerson Society 1, W. A. A. 3.

YVONNE SANGSTER ALDERMAN  
Rose Hill, N. C.  
*Grammar*

W. C. U. N. C. 1; Glee Club 2, 3, 4; Band 2, 3.

EUGENIA B. ALLEN  
Elizabethtown, N. C.  
*Home Economics and Science*

Y. W. C. A. 1, 2, 4, Y. W. C. A. Jr. Cabinet; Home Economics Club 2, 3, 4; Science Club 3, 4; Proctor 4; P. S. A. Council 1, 2, 3.

GLADYS ALLEN  
Albemarle, N. C.  
*Primary*

E.C.T.C.



# SENIORS

J. F. ALLEN

Greenville, N. C.

*History and French*



MARY AGNES ALSTON

Inez, N. C.

*Grammar*

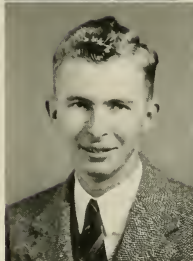
Y.W.C.A. 1; Glee Club 1, 2, 3, 4; Speech Choir 2; Association of Childhood Education 2, 3; Group Leader 4; Methodist Student Cabinet 2, 3, 4.

O. D. ANDREWS

Rocky Mount, N. C.

*Science and Math*

N. C. State 1, 2; Co-Editor Summer School Teco Echo 3; Associate Editor Teco Echo 4; Vice-President Senior Class.



MILDRED LAXTON ANDREWS

Enfield, N. C.

*English and History*

Photographer of THE TECOAN, Teco Echo, and Pieces of Eight 4; Executive Committee Y.D.C. 3, 4; English Club 3, 4; Poe Society 3, 4; Vice-Chairman College District Y.D.C. of North Carolina 4; Executive Committee Y.D.C. of N.C. 4; Executive Committee of Roosevelt Club 4; Pence College 1, 2.

RUTH ASKEW

Warsaw, N. C.

*Home Economics and Science*

Home Economics Club 2, 3, 4; Science Club 2, 3, 4; Y.W.C.A. 1, 2; W.A.A. 2, 3, 4.



SALLY M. ATKINSON

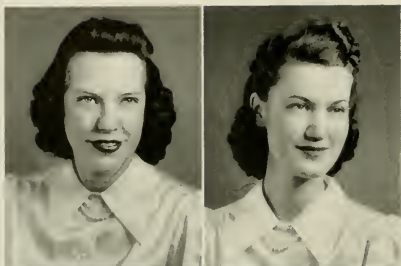
Greenville, N. C.

*Grammar Grade*

Poe Society; W.A.A.; Y.D.C.

TECOAN

# SENIORS



TULA NELL ATKINSON

Orrum, N. C.

*Grammar Grade*

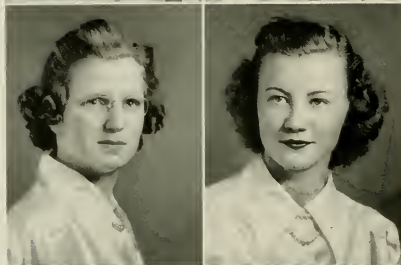
W.C.U.N.C. 1, 2; Emerson Society 3, 4; A.C.E. 4.

MARY KATE AUSTIN

Peachland, N. C.

*Home Economics and Science*

Home Economics Club 3, 4.



ELOISE AVERETTE

Wake Forest, N. C.

*Commerce and Social Science*

Commerce Club 1, 2, 3, 4; B.S.U. Council 2, 3; Social Science Club 3; International Relations Club 3, 4; Y.W. A. 1, 2, 3, 4; B.T.U. Officer 2, 3, 4; Y.D.C. 3, 4.

MARY GRANT BAILEY

Selma, N. C.

*Primary*

Band 3, 4; House President 4; Proctor 3; A.C.E. 3, 4.



SARAH ANN BAKER

Youngville, N. C.

MARGARET NIXON BARCLIFF

Wilmington, N. C.

*Grammar Grade*

Louisburg 1, 2; A.C.E. 4; Y.D.C. 4.

E.C.T.C.

# SENIORS

LAUMETA BARDEN

Orrum, N. C.

*Primary*

Peace College 1, 2; Poe Society 4; Y.D.C. 4; A.C.E. 4



PEARLIE WARD BARNHILL

Greenville, N. C.

*Science and Commerce*



MARGARET REO BASS

Nashville, N. C.

*Math and French*

Campbell College 1, 2; Math Club 3, 4.



LESSIE BATEMAN

Columbia, N. C.

*Home Economics and Science*

Chowan College 1; W.C.U.N.C. 2, 3; Y.W.C.A. 2, 3, 4; Home Economics Club 2, 3, 4.

EVELYN BAZEMORE

Lewiston, N. C.

*Grammar Grade*

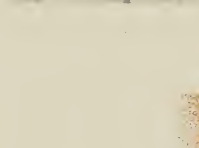
Chowan Jr. College 1, 2; Emerson Society 3, 4; A.C.E. 4; Y.D.C. 4; Jr. Class Marshal 3.

MARY ELIZABETH BEASLEY

Lumberton, N. C.

*Primary*

A.C.E. 1, 2, 3, 4; Group Leader 2; Secretary 4; Executive Board 4; Y.W.C.A. 1; W.A.A. 1, 2, 3, 4; Poe Society 1, 2, 3, 4; Marshal 2; Chief Marshal (Summer) 4; House President (Summer); Chairman Dance Committee (Summer); Presidents Club 4; Feature 3; Senior Superlative.



# SENIORS



BESS BARNHART  
Acme, N. C.

*Home Economics and Science*

CAMILLA BISSETTE  
Wilson, N. C.  
*Grammar*

Y.W.C.A.; Y.D.C.; F.T.A.; Poe Society.



DORIS BLALOCK  
Lucama, N. C.

*Science and English*

Junior Y Cabinet 1. President 1; Secretary Senior Y Cabinet 2; House President 2; Y.W.C.A. 1, 2, 3, 4; Poe Society 1, 2, 3; W. A. A. 3; English Club 2, 3; Science Club 2, 3; Vice-President W.S.G.A. 3; Treasurer Senior Y Cabinet 3; Constitution Committee 3, 4; Delegate to S.I.A.G.S. Conference 2, 3; Delegate to N.S.F.A. Conference 4; President W.S.G.A. 4; Representative to Senior Y Cabinet 4; Chairman Publication Board 4; Chairman Entertainment Committee 4; Chairman Budget Committee 4; Social Committee 4; Who's Who Among Students in American Colleges and Universities 3; Presidents Club 4; President 4; Superlative.

RACHEL BLANCHARD  
Greenville, N. C.

*History and Physical Education*

W.A.A. 1, 2, 3, 4; Y.D.C. 4; Varsity Soccer 3; Hockey 3; Head of Individual Sports 3, 4.



ELMER LEE BLAND  
Bethel, N. C.

*History and Physical Education*

Intramural Sports.

ANNA BELLE BOYD  
Greenville, N. C.

*English and History*

Peace Junior College; Y.D.C.

E.C.T.C.

# SENIORS

MARY HELEN BOYKIN

Williamston, N. C.

*Grammar Grade*

Poe Society 1; Publicity Chairman of F.T.A. 3; Secretary 4; Steering Committee of F.T.A. in N.C. 3.



RUBY BRAXTON

Greenville, N. C.

*Grammar Grade*

SAXON BRAY

Winston-Salem, N. C.

*History, French and English*



DAVID S. BREECE

Raleigh, N. C.

*Commerce and Social Science*

President Freshman Class; Football 1; Baseball 1, 2; Boxing 1, 2; Tennis 3, 4; Varsity Club 2, 3, 4; Glee Club 3; Senior Play 2, 3, 4; Chi Pi Players 3, 4; President 4; Y.D.C. 3, 4; Senior Superlative.



ELSIE BRENDEL

Bryson City, N. C.

*Home Economics and Science*

Rabun Gap 1, 2; President B.S.U. Summer 3; Home Economics Club 3, 4; Science Club 4; Y.W.C.A. 4.

MARY KATHERINE BRINKLEY

Valdese, N. C.

*Primary*

Emerson Society; Y.W.A.; Y.W.C.A.; Choir 4.



# SENIORS



MILDRFD BRILEY  
Robersonville, N. C.  
*History and Math*

Basketball 1; Treasurer of Class 2; Math Club 4.

AGNES BRITT  
Clinton, N. C.  
*Primary*

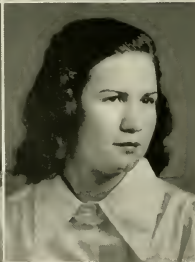
Y.W.C.A. 1; A.C.E. 3, 4.



DONALD BROCK  
Trenton, N. C.  
*History and Physical Education*

PATRICIA BROOKS  
Greenville, N. C.  
*Commerce and Science*

Poe Society 1; Commerce Club 1, 3, 4; Methodist Student Association 1, 2, 3, 4; Cabinet Member 4; Pieces of Eight 3, 4; Editor 4; Y.D.C. 4; Alpha Iota 3, 4; Historian 4; Publications Board 4; Who's Who Among Students in American Colleges and Universities 4; Presidents Club 4; College Museum Club 4; Science Club.



ALVA RUTH BROWN  
Belcross, N. C.  
*Primary*

Meredith College 1, 2; W.A.A. 3; Y.W.C.A. 3; Poe Society 3, 4; A.C.E. 3, 4.

EVELYN BRUMMITT  
Kittrell, N. C.  
*Commerce and English*

Emerson Society 1, 2, 3; English Club 2, 3; Commerce Club 3.

# SENIORS

ELIZABETH BRYAN

La Grange, N. C.

*Grammar Grade*

A.C.E. 3, 4; F.T.A. 3, 4; Y.D.C. 3, 4; Y.W.C.A. 1, 2, 3, 4.



GERALDINE BULLUCK

Rocky Mount, N. C.

*Home Economics and Science*

Junior Y Cabinet; Features 3.



ELIZABETH BURNS

Delco, N. C.

*Commerce and Physical Education*

Commerce Club 1, 2, 3, 4; W.A.A. 1, 2, 3, 4; Head of Hiking 3; Varsity Basketball Team 2; Varsity Soccer 1; Varsity Volley Ball 2.



ROBERT BURTON

Bethel, N. C.

*Physical Education and History*

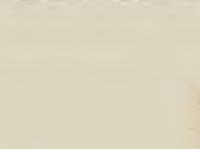
Basketball 1; Y.D.C. 2, 3; Phi Sigma Pi 2, 3, 4; Y.M.C.A. 3, 4.

GATSEY TRUETT BUTLER

Falcon, N. C.

*Primary*

Lanier Society 2, 3.



MARTHA BUTLER

Tabor City, N. C.

*Physical Education and Science*

Coker College 1, 2.





# SENIORS



ANNIE GRAY BYRD  
Bailey, N. C.  
*Primary*  
W.C.U.N.C.

LULA CAMERON  
Cameron, N. C.  
*Home Economics and Science*

Poe Society 1, 2; Science Club 2, 3, 4; Home Economics Club 2, 3, 4.



JOYCE CAMPBELL  
Lucama, N. C.  
*Social Science and History*

Junior Y Cabinet 1; Y.W.C.A. 1, 2, 3; Lanier Society 1, 2, 3, 4; Marshal 3; Entertainment Committee 4; Chi Pi Players 3; W.S.G.A. Representative 2; Who's Who Among Students in American Colleges and Universities 4

FRANCES CASH  
Wendell, N. C.  
*Grammar*

Y.W.C.A. 2; A.C.E. 3, 4; F.T.A. 3, 4; President 4.



MAISIE CASTLEBURY  
Apex, N. C.  
*Home Economics and Science*

Vice-President Junior Class; President of B.S.U. 4; President of Senior Class; Who's Who Among Students in American Colleges and Universities.

BLANCHE JESSUP CHAPPELL  
Belvidere, N. C.  
*Grammar Grade*

Poe Society 1, 2, 3, 4; Y.W.C.A. 2, 3, 4; A.C.E. 4; President Y.W.A. 3, 4.

E.C.T.C.



# SENIORS

JANE COPELAND

Ahoskie, N. C.

*Primary*

Junior Y Cabinet 1; Chowan Junior College 2, 3; Glee Club 4; Senior Play 4; A.C.E. 4; Y.W.A. 1, 2, 3, 4; Chi Pi Players 3, 4; Historian 4.

MARY ELIZABETH COPPEDGE

Thomasville, N. C.

*English and Music*

Mars Hill 1, 2; Glee Club 3, 4; Band 3, 4; Orchestra 3, 4; Senior Play 4.



L. C. CAPPS

Jacksonville, N. C.

*History and Physical Education*

WISTA COVINGTON

Dillon, S. C.

*Home Economics and Science*

Junior Y Cabinet 1; Lanier Society 1, 2, Treasurer 2; W.S.G.A. Treasurer 2; Home Economics Club 3, 4.



JEWEL COZART

Greenville, N. C.

*Primary*

BARBARA EDNA CREECH

Snow Hill, N. C.

*Grammar Grades*

Glee Club 1, 2, 3; Alumni Sons and Daughters 3, 4.



TECOAN

# SENIORS



MARY FRANCES CUTTS  
Stovall, N. C.  
*Home Economics and Science*

ELEANORA CROMARTIE  
Garland, N. C.  
*Home Economics and Science*

Peace Junior College 1, 2; Home Economics Club 3, 4; Science Club 4; Lanier Society 3, 4; P.S.A. 3, 4; Cabinet 4; Y.W.C.A. 4; Y.D.C. 4.

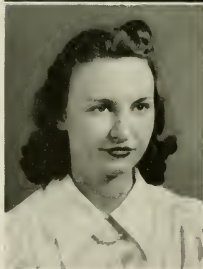


JAMES BURTON DANIELS  
Crossnore, N. C.  
*Math and Science*

Football 4; Pieces of Eight 4; Teco Echo 4; Publicity Manager Athletics 4; Debating Club 4.

HELEN DAVENPORT  
Kinston, N. C.  
*Commerce and History*

Commerce Club 1, 2, 3, 4; Band 1, 2, 3; Poe Society 1, 2; Y.D.C. 4; History Club 3.



KATHERINE DAVENPORT  
Greenville, N. C.  
*Commerce and French*

Phi Sigma 2, 3, 4; Secretary and Treasurer 4; Y.D.C. 3, 4; Executive Committee 3, 4; Delegate Student Legislature 4; Alpha Iota Sorority 4.

LILA B. DAVENPORT  
Roper, N. C.  
*Home Economics and Science*

Lanier Society 1; M.S.A. 1, 2, 3, 4; Home Economics Club 2, 3, 4.

E.C.T.C.

# SENIORS

MADLINE DAVENPORT  
Oak City, N. C.  
*Primary*



WILLIAM A. DAVIDSON  
Plymouth, N. C.  
*Math and Physical Education*

Football 1, 2, 3; Baseball 1, 3, 4; M.S.G.A. 3, 4;  
Varsity Club 3, 4; Math Club 4; State College 1, 2;  
Senior Play 4.

DOROTHY LOUISE DAVIS  
Burgaw, N. C.  
*Primary*

Teco Echo Representative 1; Math Club 1, 2; Poe So-  
ciety 1; Science Club 2, 3, Secretary 3; Proctor 2;  
A.C.E. 4; TECOAN Editorial Staff 3; TECOAN Class  
Representative 4; College Choir 3, 4.



MATTIE DAVIS  
Pikeville, N. C.  
*Grammar Grade*

Poe Society 1, 2; A.C.E. 3; Secretary of Class 4.

MYRA EVELYN DAVIS  
Beaufort, N. C.  
*Primary*

Home Economics Club 1.



MABEL DEANS  
Goldsboro, N. C.  
*Grammar Grade*

Y.W.C.A. 2, 4; A.C.E. 3, 4; M.S.A. Circle Captain 4.

TECOAN

# SENIORS

MARY KATHERINE DOBSON  
Beaulaville, N. C.  
*History and English*

JEROME DONALDSON  
Metter, Georgia  
*Commerce and Math*

Student Council 3; Membership Chairman of Y.M.C.A. 4; Math Club 4; Commerce Club 4; Who's Who Among Students in American Colleges and Universities 4.

BILL DUDASH  
Massena, New York  
*Physical Ed. and Social Science*

Football 1, 2, 3, 4; Basketball 1, 2; Glee Club 1, 2; Chi Pi Players 3, 4; Baseball 1, 2; Varsity Club 1, 2, 3, 4. "Milky Way" 3; "Skull".

FLORENCE DUDLEY  
Greenville, N. C.  
*History and English*

Poe Society 3, 4; Chi Pi Players 4

JEANETTE EARLY  
Ahoskie, N. C.  
*History and English*

NYMPIE EDGERTON  
Kenly, N. C.  
*Home Economics and Science*

W.C.U.N.C. 1, 2; Home Economics Club 1, 2, 3, 4; Poe Society 3; W.A.A. 3.



E.C.T.C.

# SENIORS

ESTELLE MARIE EDWARDS  
Newport, N. C.

*Home Economics and Science*

W. A. A. 1, 2, Secretary 3, Treasurer 4, Varsity Basketball 2, 3; Home Economics Club 3, 4; Poe Society 1.



JULIA WORTH EDWARDS  
Tabor City, N. C.  
*Commerce*



MARY ELIZABETH EAGLES  
Pinetops, N. C.

*English and French*

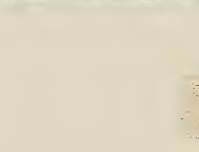
Poe Society 1, 2, 3, 4; French Society 1, 2, 3, 4; Dramatics Club 1, 2, 3, 4; Y. W. C. A. 1; Voice Choir 2, 3.



MARY ELLIOT  
Edenton, N. C.

*Primary*

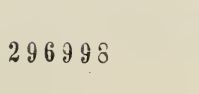
Poe Society 1; A. C. E. 2, 3, 4; Y. W. C. A. 2, 3, 4; W. S. G. A. 4; House President 4.



SARAH McNAIR EVANS  
St. Pauls, N. C.

*English and History*

Junior Y Cabinet 1; Y. W. C. A. 1; Ki Pi Players 1, 2; Verse Speaking Choir 2, 3; Business Staff Tevo Echo 3.



JANIE EVERETT  
Robersonville, N. C.

*English and French*

English Club 4; Phi Sigma 1, 2, 3, 4; Chi Pi Players 3, 4; Y. D. C. 4.



# SENIORS

BERLINE FAIRCLOTH

Roseboro, N. C.

*English*

Poe Society 1, 2, 3, 4; W.A.A. 1, 2, 3, 4; English Club 2, 3, 4.

SUE FOY

Pollocksville, N. C.

*Home Economics and Science*

W.C.U.N.C. 1; Proctor; Freshman Y Council; Athletican Society; Science Club 2, 3, 4; A.D.S. Club 2, 3, 4; Y.D.C. 4; Home Economics Club 3, 4.

CHRISTINE FENTRESS

Knotts Island, N. C.

*Home Economics and Science*

Home Economics Club 2, 3, 4; Science Club 2, 3, 4; M.S.A. 1, 2.

LOUISE FISHER

St. Pauls, N. C.

*French and English*

Appalachian State Teachers College; Phi Sigma; English Club; Y.W.C.A.; Y.D.C.

CHARLEY J. FRAZELLE

Richlands, N. C.

*Science and Math*

MERVIN FRAZELLE

Richlands, N. C.

*Commerce and History*

Phi Sigma Pi 4; Commerce Club 3, 4; Y.M.C.A. 4; Football 1, 2, 3; Varsity Club 2, 3, 4; Band 1, 2, 3, 4; Orchestra 2, 3, 4; International Relations Club 4; Senior Play 4; Senior Superlative.



E.C.T.C.

# SENIORS

FLORENCE GADDY  
Jacksonville, N. C.

*Primary*

Poe Society 1, 2, 3; A.C.E. 3, 4.



HAZEL GAINEY  
Dunn, N. C.

*Primary*



ANNIE ELIZA GARRIS  
Ayden, N. C.

*Commerce and Math*

EDWENA GARRIS  
Ayden, N. C.

*Primary*

Y.D.C. 4.



PHILLIP GARRIS  
Ayden, N. C.

*Commerce and History*

MARTHA GASKINS  
New Bern, N. C.

*Home Economics and Science*

Poe Society 1, 2; Home Economics Club 2, 3, 4; Y.W.C.  
A. 1, 2, 4; Science Club 3; Debating Club 4.

TECOAN



# SENIORS



**NINA SUTTLE GATLING**

Gates, N. C.

*Home Economics and Science*

W.C.U.N.C. 1, 2; Poe Society 3, 4; W.A.A. 3, 4; Y.D.C. 4; Home Economics Club 3, 4; Science Club 3, 4.

**IDA MARIE GEORGE**

Comfort, N. C.

*English and French*

Louisburg College 1, 2; English Club 3, 4; Sigma Phi Alpha 4; College Choir 3; Glee Club 4; Verse Speaking Choir 3; English Club 4; Vice-President 4; Editor-in-Chief of Phi Sigma 4; Senior Superlative.



**MYRA GODFREY**

Jonesboro, N. C.

*Home Economics and Science*

Home Economics Club 2, 3, 4; Delegate to State Home Economic Convention 3; Science Club 3; Y.W.C.A. 1; TECOAN Representative 3; House President 4; Who's Who Among Students in American Colleges and Universities 4.

**THERA GODWIN**

Falcon, N. C.

*Home Economics and Science*



**ANNE SEVILLE GOOLSBY**

Greenville, N. C.

*Grammar Grade*

Atlantle Christian College 1; Poe Society 2, 3, 4; Marshal 4; A.C.E. 4.

**EDITH MAE GRANT**

Garysburg, N. C.

*Grammar*

Poe Society 1, 2, 3, 4; Y.W.C.A. 1, 2; A.C.E. 1.

E.C.T.C.

# SENIORS

**FRANCES WICKLIFFE GULLEDGE**  
Greenwood, S. C.  
*Commerce*  
Senior Superlative.



**LORENE FRANCES HAMRICK**  
Shelby, N. C.  
*Primary*  
Y.D.C. 4; A.C.E. 4.



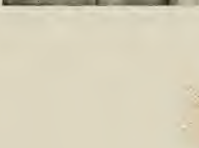
**ARTIS HARDEE**  
Greenville, N. C.  
*Science and History*  
Glee Club 1, 2, 3; Phi Sigma Pi 2, 3, 4; Y.D.C. 4.

**ERNESTINE HARDEE**  
Grimesland, N. C.  
*History and English*  
International Relations Club 4; Lanier Society 4; Y.W.C.A. 4.



**MARY FRANCES HARDY**  
Maury, N. C.  
*Grammar Grade*  
Lanier Society 1, 2, 3, Marshal 2, 3, Treasurer 1; W.S.G.A. 2; Y.W.C.A. 1, 2, 3; Junior Y Cabinet 1; Chorus Speaking Choir 2, 3; Who's Who Among Students in American Colleges and Universities 4; W.A.A. 1; A.C.E. 3, 4; Parliamentarian 4; F.T.A. 3, Historian.

**RUTH GLEEN HARDY**  
LaGrange, N. C.  
*Commerce and Math*  
Math Club 1, 2, 3, 4, President 3; Commerce Club 1, 2, 3, 4; Chairman of Social Committee 4; Alpha Iota 3, 4; Vice-President 4; Band 1, 2, 3; Y.W.C.A. 1, 2, 3.



TECDAN

# SENIORS

ELIZABETH H. HARRELL  
Gates, N. C.

*English and History*

Y. W. C. A. 1, 2, 3, 4; Poe Society 1, 2, 3, 4; History Club  
2; International Relations Club 3, 4; English Club 2, 3,  
4; Verse Speaking Choir 3; TECOAN Representative 4;  
Gates County Club 3, 4.

BELVA DARE HARRIS  
Greenville, N. C.

*History and Social Science*

Glee Club 1, 2, 3; B.S.U. Council 2.

FLOYD HINTON  
Rocky Mount, N. C.

*History and Physical Education*

MARTHA HOELL  
Grimesland, N. C.

*Home Economics and Science*

OLGA HOGGARD  
Lewiston, N. C.

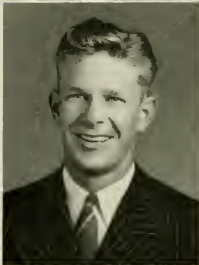
*Grammar Grade*

Chowan College: A.C.E. 4; Y.D.C. 4; W.A.A. 4.

ELIZABETH HOLLIDAY  
Greenville, N. C.

*Primary*

B.S.U. Council 2, 3; Glee Club 4.



E.C.T.C.

# SENIORS

MYRTLE HOPKINS

Plymouth, N. C.

*Home Economics and Science*

W.A.A. 1, 2, 3, 4, Treasurer 2, Vice-President 3, 4; Manager of Basketball Team 1; Varsity Basketball 2, 3; Home Economics Club 3, 4; Poe Society 1.



ALICE MARSHALL HUMPHRIES

Woodsdale, N. C.

*Primary*

Mars Hill Junior College 1, 2; A.C.E. 3, 4.



CLARISSA M. HUMPHREY

Wilmington, N. C.

*English and Social Science*

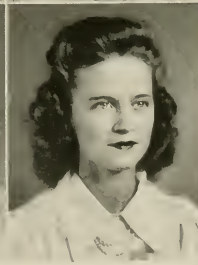
Teco Echo Reporter; TEOCAN Business Staff 4; Pieces of Eight Editorial Staff; Delegate Student Legislature, Co-Chairman Program Committee; Y.D.C. Executive Committee; English Club.

KATHRYN HURST

Marines, N. C.

*Primary*

Poe Society 1, 2; A.C.E. 1, 4; Y.W.C.A. 4.



ELIZABETH WILLA HUTCHINSON

Bladenboro, N. C.

*Primary*

Peace Junior College; Sigma Phi Kappa 1, 2; A.C.E. 3; Y.W.C.A. 3; Glee Club 2, 3, 4; Y.D.C. 3, 4, Vice-President 4.

MARY FRANCES IRVIN

Shelby, N. C.

*Home Economics and Science*

Y.W.C.A. 1, 2, 3; Junior Y Cabinet 1; W.A.A. 1, 2; Home Economics Club 2; Feature 3; A.S.T.C. Summer School 3.

TECAN

# SENIORS



WILLIAM WARD JAMES  
Winterville, N. C.

*Mathematics and English*

Chi Pi Players 2, 3, 4; Who's Who Among Students in American Colleges and Universities 4; Junior Play 2; Varsity Club Play 3; Senior Play 3; World Premier of Ramona 4; Entertainment Committee 4.



HELEN BROWN JEFFERSON  
Fountain, N. C.

*Commerce*



INEZ JENNINGS

Halifax, Virginia

*English and History*

Campbell College 1, 2; I.R.C. 4.



LOUISE JONES

Pink Hill, N. C.

*Commerce*

Louisburg College 1; Commerce Club 2; Poe Society 2; Glee Club 3, 4; Y.D.C. 4.



LEON JUSTICE

Jacksonville, N. C.

*History and Science*

Louisburg College 1, 2; Y.M.C.A. 4; Y.D.C. 4.



ANNIE LAURIE KEENE

Smithfield, N. C.

*Commerce and English*

Flora Macdonald College; English Club 2, 3, 4; Secretary 3; Commerce Club 2, 3; Alpha Iota Sorority 3, 4; Chaplain 3; Social Secretary 4; Poe Society 2, 3, 4; W.S.G.A. 4; Y.W.C.A. 4; Who's Who Among Students in American Colleges and Universities 4.

E.C.T.C.

# SENIORS

**HELEN KEMP**  
Louisburg, N. C.  
*Grammar Grade*



**ELOISE KENNEDY**  
Kerr, N. C.  
*Grammar Grade*

W.C.U.N.C. 1; Y.W.C.A. 4; Emerson Society 3, 4;  
A.C.E. 4; TECOAN Representative 4.

**BARBARA KEUZENKAMP**  
Greenville, N. C.  
*Commerce and French*

Class Representative for Teco Echo 1, 2; Associate Editor of Teco Echo 2; Sigma Pi Alpha 1, 2, 4; Glee Club 1; Orchestra 1, 2, 4; Drum Major of Band 1, 2, 4; Commerce Club 2, 4; Mixed Choir 2, 4; Alpha Iota Sorority 2, 4; Corresponding Secretary and Publicity Chairman 2; President 4; Delegate to Alpha Iota Conclave, Washington, D. C. 4; Delegate to N.C. C.P.A. 1, 2, 4; Corresponding Secretary Y.D.C. 4; Technical Staff Senior Play 2; Fashion Columnist for "News Leader", and "The Beaufort News" 1, 2, 4; Teco Echo Staff 4; Associate Editor of TECOAN 4; Publications Board 4; Who's Who Among Students in American Colleges and Universities.



**BETTY KEUZENKAMP**  
Greenville, N. C.  
*Commerce and French*

Orchestra 1, 2, 4; Choir 2, 4; Girls Glee Club 1; Drum Major of Band 1, 2, 4; String Quartet 1, 2; Commerce Club 1, 4; Teco Echo Staff 1, 2, 4; Sigma Pi Alpha 1, 2, 4; Alpha Iota Sorority 2, 4; Treasurer 2; Pledge Captain 4; Class Representative to TECOAN 1; Editor-in-Chief of TECOAN 4; Delegate to N.C.C.P.A. 2, 4; Delegate to Alpha Iota Conclave 4; Presidents Club 4; Publications Board 4; Who's Who Among Students in American Colleges and Universities 4; Publicity Chairman of Y.D.C. 4.



**HELEN KING**  
Gates, N. C.  
*History and French*

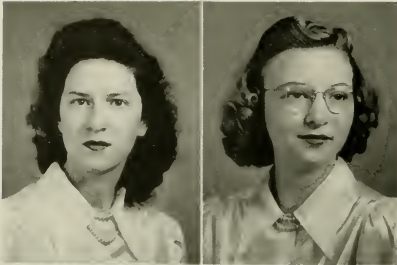
Phi Sigma 2, 3, 4; Methodist Cabinet 2, 4; Y.W.C.A. 4.

**EDNA CATHERINE KIRBY**  
Lucama, N. C.  
*Home Economics and Science*

Atlantic Christian College; Home Economics Club 2, 3, 4; Science Club 3, 4.



# SENIORS

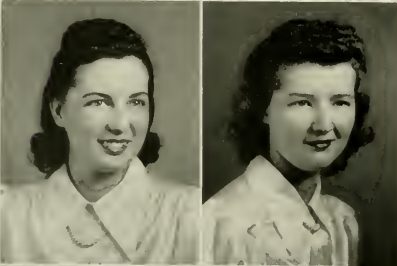


MARY ESTHER KOONCE  
Richlands, N. C.

*Home Economics and Science*

Poe Society 1, 2, 3, 4; Y.W.C.A. 1, 2, 3, 4; Home Economics Club 3, 4; Pieces of Eight Staff 3; Chi Pi Players 1, 2, 3, 4.

MARGARET LAMB  
*Commerce*



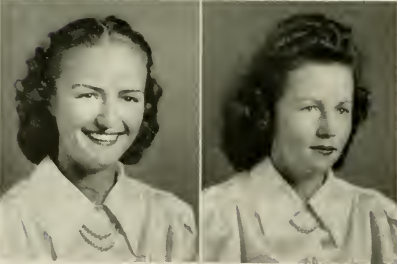
HELEN AILENE LANE  
Fort Barnwell, N. C.

*Home Economics and Science*

Y.W.C.A. 1, 2, 3, 4; Home Economics Club 2, 3, 4.

JOANNA LANE  
Tabor City, N. C.  
*Primary*

Lanier Society 1, 2; A.C.E. 3, 4; F.T.A. 4.



MILDRED LANGLEY  
Greenville, N. C.  
*Grammar Grade*

THELMA LANGSTON  
Rocky Point, N. C.  
*Home Economics and Science*

Home Economics Club 1, 2, 3, 4; Poe Society 1, 2, 3, 4; Y.D.C. 3, 4.

E.C.T.C.



# SENIORS

WILMA GRARY LEE

Dunn, N. C.

*Primary and Public School Music*

A.C.E. 3, 4; College Band 3, 4; Orchestra 2, 3, 4; Glee Club 2, 3, 4.

MARY HINES LEONARD

Nashville, N. C.

*Home Economics and Science*

Campbell College 1, 2; Home Economics Club 3, 4.

DOROTHY CLARK LEWIS

Macclesfield, N. C.

*Primary*

EFFIE SENORA LEWIS

Farmville, N. C.

*Home Economics and Science*

Y.W.C.A. 1, 2; Junior Y Cabinet 1; Home Economics Club 1, 2, 3, 4; Science Club 1, 2, 3, 4; Poe Society 1, 2, 3, 4; W.S.G.A. 2; M.S.A. Cabinet 3.

KATHLEEN LEWIS

Wilmington, N. C.

*Grammar Grade*

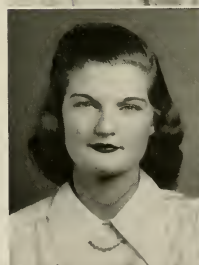
A.C.E. 1; Y.W.C.A. 1, 2; Constitution Committee 2; Pieces of Eight Staff, Assistant Business Manager 3; Business Manager 4; F.T.A. 3, 4; President 4; Who's Who Among Students in American Colleges and Universities 4; Y.D.C. 3, 4; Presidents Club 4.

SARAH EDITH LINDLEY

Snow Camp, N. C.

*Primary*

Guilford College 1; U.N.C. Summer School; A.C.E. 3, 4; Y.W.C.A. 3, 4; College Choir 3.



TECOAN

# SENIORS



MARY LENORA LITTLE

Freeland, N. C.

*Home Economics and Science*

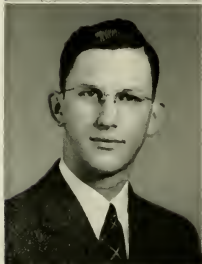
Home Economics Club 2, 3, 4; Science Club 2, 3, 4; P.T.A. 3, 4.

INEZ LYDAY

Brevard, N. C.

*Home Economics and Science*

Home Economics Club.



ALBERT MANESS

Chadbourn, N. C.

*Commerce and History*

Glee Club 3, 4; Commerce Club 2, 3, 4; History Club 2, 3; Y.M.C.A. 1, 2, 3, 4; Treasurer 4; Manager Football, Basketball and Baseball 3; Varsity Club 4; Y.D.C. 4.

REON GLADYS MANESS

Hemp, N. C.

*Home Economics and Science*

Louisburg College 1, 2; Home Economics Club 3, 4; Science Club 4; M.S.A. 3, 4; W.A.A. 4.



CARRIE MAE MANN

Lake Landing, N. C.

*Commerce and French*

Lanier Society 1, 2, 3; Y.W.C.A. 1; Alpha Iota Sorority 4; W.A.A. 4; Commerce Club 2, 3, 4; Phi Sigma 1, 2, 3, 4.

EDNA MARSHBURN

Clinton, N. C.

*Grammar Grade*

A.C.E.; B.T.U. Officer; Y.W.A. Secretary.

E.C.T.C.

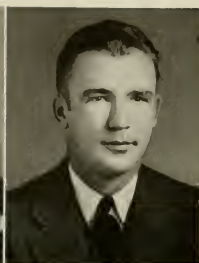
# SENIORS

**BENJAMIN FRANKLIN MARTIN**

Bethel, N. C.

*History and Social Science*

Glee Club 2, 3, 4; Phi Sigma Pi 3, 4; Y.D.C. 3, 4.



**KELLY MARTIN**

Conway, N. C.

*Social Science and Physical Ed.*

Football 1, 2, 3; Basketball 1, 2, 3, 4; Baseball 1, 2, 3, 4; Varsity Club 2, 3, 4; Treasurer.

**ELIZABETH MASHBURN**

Benson, N. C.

*Mathematics and History*

Y.W.C.A. 1, 4; Mathematics Club 1, 2, 3, 4; Secretary and Treasurer 2; I.R.C. 2, 3; P.S.A. Council 3, 4.



**MRS. LOUISE PETTY MATHENY**

Pittsboro, N. C.

*Primary and Music*

Glee Club 2, 3, 4; Lanier Society 2, 3; Debating Club 2; Band 4.

**SALLY MARY MATHIAS**

Gates, N. C.

*Primary*

W.A.A. 2, 3, 4; A.C.E. 2, 3, 4; M.S.A. 1, 2, 3, 4; President 4; Vice-President 3; A.C.E. Cabinet 4; Y.D.C. 3, 4; Y.W.C.A. 4.



**EVELYN WRIGHT MATTHEWS**

Kipling, N. C.

*Grammar Grade*

Meredith College 1; Y.W.C.A. 2, 4; A.C.E. 4; Philare-tian Society 1.

TEEDAN

# SENIORS



ADDIE LEE MEADOR  
Williamston, N. C.  
*Grammar Grade*

Poe Society 1, 2, 3, Proctor 2; A.D.C. Club 2, 3, 4.  
Vice-President 4; Y.D.C. 3, 4; F.T.A. 3, 4.



ELIZABETH MEADOWS  
Greenville, N. C.  
*Math and Science*

Teco Echo 2, 3, 4, Reporter 2, 4, Associate Editor 3;  
Math Club 2, 3, 4; TECOAN Staff 4; Science Club 4;  
Band 3; Orchestra 2, 3, 4.



LEON MEADOWS, JR.  
Greenville, N. C.  
*Math and Science*

Tennis Team 1, 2, 3, 4; Band 1, 2; Math Club 1, 2;  
Science Club 2; Glee Club 1, 2; Manager of Tennis  
Team 1, 2.



ELIZABETH MEIGGS  
Camden, N. C.  
*Home Economics and Science*

Lanier Society 1, 2, 3, 4; Home Economics Club 2, 3, 4



WILLIAM L. MERNER  
Durham, N. C.  
*Physical Education and Commerce*

Varsity Club 1, 2, 3, 4, Secretary and Treasurer 2,  
Publicity Agent 3, President 4; Football 1, 2, 3; Man-  
ager of Basketball and Baseball 1, 2, 3; M.S.G.A. 3, 4;  
TECOAN Associate Editor 3; Phi Sigma Pi 3, 4, Vice-  
President 4; Who's Who Among Students in American  
Colleges and Universities 3; Varsity Club Play 3; Pres-  
ident Mens Dormitory 2, 3; Glee Club 1; Dramatic  
Club 3, 4.



ELIZABETH MERRITT  
Rose Hill, N. C.  
*Grammar Grade*

Lanier Society 1, 2, 3, 4; W.A.A. 2, 3, 4; A.C.E. 4;  
Y.D.C. 4.

# SENIORS

NELLIE LEE MICHAEL  
Mebane, N. C.

*Home Economics and Science*

Science Club 2, 3; Home Economics Club 2, 3, 4.



IRENE MITCHAM  
Goldsboro, N. C.

*Grammar Grade*

President Episcopal Students 4; Proctor 4; Emerson Society 1, 2, 3, 4; Marshal 4; Y.W.C.A. 1; 2, 3, 4; Junior Y Cabinet 1; Y Cabinet 2, 4; Glee Club 1, 2, 3; A.C.E. 3, 4; F.T.A. 3, 4; Song Leader 3; Chi Pi Players 3, 4; Who's Who Among Students in American Colleges and Universities 4; World Premier of Harmona, Senior Play 4.



BRUCE MODLIN  
Jamesville, N. C.

*Grammar Grade*

Emerson Society 1, 2; W.A.A. 2; College Choir 3; F.T.A. 3; A.C.E. 3, 4; Glee Club 4; Y.D.C. 4.

EDNA MONTGOMERY  
Warrenton, N. C.

*Primary*



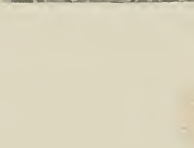
EMILY MONTAGUE  
Oxford, N. C.

*Primary*

GENEVA MOORE  
Stokes, N. C.

*Primary Education*

Y.D.C. 3, 4; A.C.E. 3, 4; Y.W.C.A. 3.



# SENIORS

MARGARET D. MOORE  
Greenville, N. C.

*Math and English*

Teco Echo Reporter 3, 4; Senior Class Reporter 4;  
TECOAN Associate Editor 4; Math Club 2, 3, 4;  
Vice-President 4; English Club 3, 4; A.D.S. Club 2, 3,  
4; Y.W.C.A. 3.

RUTH MOORING  
Snow Hill, N. C.

*Grammar Grade*

A.C.E. 4; Y.D.C. 3, 4.

NORMAN FOERSTER MOORE  
Bethel, N. C.

*History, English and Social Science*

U.N.C. 3; Tuscaloosa, Ala. 2; Poe Society 1, 2.

NOVINE MOORE  
Lucama, N. C.

*English and History*

PEGGY MOSS  
Stokes, N. C.

*Commerce and Science*

Mars Hill Junior College 1, 2.

EVELYN MYRICK  
Littleton, N. C.

*Grammar Grade*

Y.W.C.A. 3, 4; A.C.E. 3, 4; Proctor 4; F.T.A. 4;  
Program Committee 4.



E.C.T.C.

# SENIORS

MARGARET MCDANIEL  
Woodland, N. C.  
*Home Economics and Science*  
Home Economics Club 2, 3.

ELLEN MCINTIRE  
Red Oak, N. C.  
*Home Economics and Science*

Meredith College 1; Lanier Society 2, 3, 4. Vice-President 3, President 4. Marshal 4; Home Economics Club 1, 2, 3, 4. Vice-President 4; Science Club 2, 3; Chi Pi Players 3; W.A.A. 2; Varsity Soccer 2; Who's Who Among Students in American Colleges and Universities 4; Teco Echo Staff 2, 3. Associate Business Manager 3.

GLADYS GRANTHAM NEWBERN  
Goldsboro, N. C.  
*Primary Education*

Poe Society 1, 2, 3, 4; Y.W.C.A. 1, 2, 4; Proctor 2; Wayne County Club 1.

MRS. RACHAEL MCPHERSON NEWLIN  
Raleigh, N. C.  
*Primary Education*

Guilford College 1; U.N.C. Summer School: A.C.E. 3, 4; Proctor 3; College Choir 3.

HAMPTON NOE  
Wilmington, N. C.  
*Science and History*

"The Citadel" 1; History Club 2, 3; International Relations Club 4. Executive Committee 4; Science Club 2, 3, 4; Chi Pi Players 2, 3, 4; Technical Staff Senior Play 1, 2, 3, 4; Construction Staff of The Varsity Club Play and Senior Plays 1, 2, 3, 4; Football 2; Cheer Leader 3, 4; Y.D.C. 3, 4; Y.M.C.A. 4; Episcopal Student Organization 1, 2, 3, 4; Publicity Manager 2, 3; TECOAN Staff 4.

JUANITA O'BRIEN  
Stovall, N. C.  
*English and French*

Phi Sigma 2, 3, 4; English Club 2, 3, 4; Proctor 2; Secretary of Granville County Club 2.





# SENIORS

HAZEL OWENS

Fountain, N. C.

*Primary Education*

Class TECOAN Representative 2; Poe Society 1, 2, 3, 4; President 4; W.S.G.A. 3; A.C.E. 2, 3, 4; A.D.S. Club 2, 3, 4; Chi Pi Players 2; Who's Who Among Students in American Colleges and Universities 3; Senior Superlative.

MYRTIE PARNELL

Pikeville, N. C.

*Home Economics and Science*

Home Economics Club 2, 3, 4; Lanier Society 1; Y.W.C.A. 3, 4.

ELIZABETH LOFTIN PEARSALL

Wallace, N. C.

*Home Economics and Science*

Montreat Junior College 1, 2; Home Economics Club 3; Science Club 3.

JANIE REID PHILLIPS

Grifton, N. C.

*Primary Education*

Pence Junior College 1, 2; A.S.D. 3, 4; A.C.E. 4.

MARY ELIZABETH PHILLIPS

Macclesfield, N. C.

*Grammar Grade*

MATT PHILLIPS

Greenville, N. C.

*Physical Education and Commerce*

Mars Hill College; U.N.C. Football 3; Band 3, 4; Pieces of Eight 4; Teco Echo Staff 3; TECOAN Staff Photographer 4.



E.C.T.C.

# SENIORS

ELIZABETH PILAND  
Conway, N. C.

*Primary and Public School Music*

A.C.E. 1, 2, 3, 4; M.S.A. Cabinet 2; Glee Club 2, 3; Orchestra 2, 3, 4; Y.W.C.A. 4.



LYDIA PINER  
New Bern, N. C.

*English and History*

Chowan College 1, 2; Emerson Society 3; Jarvis Debating Club 3; Teco Echo 4; English Club 4; Senior Play (Worlds Premier of Ramona) 4; Senior Superlative.



LEELAH BLANCHE PITTMAN  
Whitakers, N. C.

*Home Economics and Science*

Louisburg Junior College 1, 2.



MAYBELLE POLLOCK  
Pollocksville, N. C.

*Physical Education and English*

Campbell College 1, 2; W.A.A. 3, 4, Cabinet 4; M.S.A. 3, 4; Y.W.C.A. 4; Y.D.C. 4.

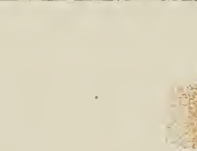
RUTH YOUNG POLLARD  
Garner, N. C.

*French and History*

Peace Junior College 1, 2; Phi Sigma 3, 4; I.R.C. 3, 4; College Choir 3, 4; Who's Who Among Students in American Colleges and Universities 4; Y.W.C.A. 4; W.A.A. 4; Y.D.C. 3, 4; W.S.G.A. Summer Council 3; Editorial Staff of Pieces of Eight 3, 4; Associate Editor of Teco Echo 4.

DOROTHY POTEAT  
Marion, N. C.

*History and English*



TECDAN

# SENIORS



SARA ANN PROCTOR

Greenville, N. C.

*Physical Education and Science*

Sinai School of Nursing 1; Emerson Society 2, 3, 4; Y.W.C.A. 2, 3, 4; Y.D.C. 4; Science Club 3, 4; Band 2, 3, 4; W.A.A. 2, 3, 4; Head of Basketball 3, 4; Tennis Team 4; Varsity Hockey 3, 4; Manager of Varsity Basketball 2.

THELMA RAYFORD

Newton Grove, N. C.

*Primary Education*

Y.W.C.A. 1, 2; A.C.E. 2, 3, 4; Proctor 4.



ALICE LEE RICH

Wake Forest, N. C.

*Home Economics and Science*

Home Economics Club 2, 3, 4; Science Club 2, 3; Sophomore Representative Social Committee 2; Y.W.C.A. 1, 2; Secretary of Class 2.

HARRY S. RIDDICK

Gatesville, N. C.

*Physical Education and Science*

Varsity Club 3, 4; Baseball 3; Science Club.



MADLINE RIDDICK

Hobbsville, N. C.

*Primary Education*

Emerson Society 4; A.C.E. 4.

DORIS ROBERTS

Shawboro, N. C.

*Home Economics*

E.C.T.C.

# SENIORS

FRANCES CRANDALL ROEBUCK  
Washington, N. C.

*Physical Education and Science*

Atlantic Christian College; W.C.U.N.C.; W.A.A. 3, 4; TECOAN Representative 4; Tennis 3, 4; Varsity Hockey; Varsity Basketball; Y.W.C.A. 3, 4; Poe Society 3, 4; Science Club 3, 4; A.D.S. 3, 4; President 4; Cheer Leader 3, 4; Head Cheer Leader 4; Delegate to Student Legislature 4; Y.D.C. 4; Council of Y.D.C. 4.



LAURA ANN ROBINSON  
Atlantic, N. C.

*Grammar Grade*

Poe Society 1, 2, 3; A.C.E. 3, 4; Math Club 1; Commerce Club 1; Y.W.C.A. 4.

WALTER ROGERS  
Woodsdale, N. C.

*History and Physical Education*

Wake Forest; M.S.G.A. 3, 4, Vice-President 3; President 4; Varsity Club 2, 3, 4; Treasurer 4; Phi Sigma Pi 2, 3, 4; Budget Committee 4; Social Committee 4; Courtesy Card Committee 4; Entertainment Committee 4; Football 2, 3, 4, Captain 4.



MELBA GRACE ROGERS  
Williamston, N. C.

*Primary Education*

Emerson Society 1, 2; Marshal 2; A.C.E. 3, 4; Glee Club 3, 4; W.A.A. 2, 4; Y.D.C. 4.

VINCENT ROMANO  
Huntington, N. Y.

*Music and English*

Orchestra 1, 2, 3, 4; Band 2, 3, 4; Glee Club 3; Mixed Choir 3.



REBECCA ROSS  
Aurora, N. C.

*Commerce and English*

Junior Y Cabinet 1; Y.W.C.A. 1, 2, 3, 4; Poe Society 1, 2, 3, 4; Treasurer 2; Commerce Club 1, 2, 3, 4; M.S.A. 2; Delegate to M.S.A. Conventions 1, 2; Secretary Pieces of Eight 2, 3; Marshal 3; Treasurer of Junior Class 3; Chairman of Social Service Committee of Y.W.C.A. 3; Delegate to Blue Ridge Conference 2, 3; Delegate to Y.M. Y.W.C.A. Presidents School at Columbia University; Who's Who Among Students in American Colleges and Universities 3; Alpha Iota Sorority 3, 4; Chaplain 4; President Y.W.C.A. 4; Y.D.C. 3, 4.

TECOAN

# SENIORS

RAY SAINT-AMAND  
Wilmington, N. C.

*Grammar Grade*

Y.W.C.A. 3; A.C.E. 3, 4; Y.D.C. 3, 4; F.T.A. 3, 4; Parliamentarian 4; Y.W.A. 4; M.S.A. 1, 2, 3, 4; Senior Superlative.

ERLINE SAWYER  
Powells Point, N. C.

*English, French and History*

Lanier Society 1, 2, 3; Secretary 2; English Club 2, 3, 4; Vice-President 3; History Club 2; Vice-President 2; W.S.C. 3; Who's Who Among Students in American Colleges and Universities 2; Y.W.C.A. 1, 2, 3, 4; Cabinet 4; Business Staff TECOAN 2; Business Staff Teco Echo 2; Budget Committee 4; Phi Sigma Pi 4; Chi Pi Players 2; Senior Superlative.

MAUDE SAWYER  
Belcross, N. C.

*History and Physical Education*

Meredith College 1, 2; Chi Pi Players 3; Executive Committee I.R.C. 3; Lanier Society 3, 4; W.A.A. 3, 4; Teco Echo 4; President I.R.C. 4; B.S.U. Council 4; Varsity Basketball 3.

REBECCA SHANKS  
Oxford, N. C.

*Primary Education*

Poe Society 1, 2, 3, 4; Vice-President Granville County Club 1; W.S.G.A. 1, 3, 4; House President 3; Entertainment Committee 2; Secretary Poe Society 2; Marshal 2; Y.W.C.A. 1, 2, 3, 4; Senior Y Cabinet 4; House of Comradship 2; Class Treasurer 4; Delegate Blue Ridge Conference 3; Y.D.C. 4; A.C.E. 4; Who's Who Among Students in American Colleges and Universities 3.

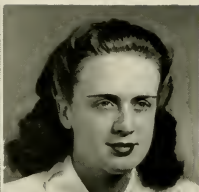
ETHEL MAE SMITH  
Hubert, N. C.

*Home Economics and Science*

Home Economics Club 2, 3, 4; Science Club 2, 3, 4; Y.W.C.A. 3, 4; Poe Society 1.

GRACE SMITH  
Varina, N. C.

W.A.A. 1, 2; Basketball 1; A.C.E. 4.



# SENIORS

LERA SMITH

Vanceboro, N. C.

*Primary Education*

Glee Club 1; Poe Society 1, 2, 3, 4; Y.D.C. 4; A.C.E. 4; Senior Play, World Premier of Ramona.

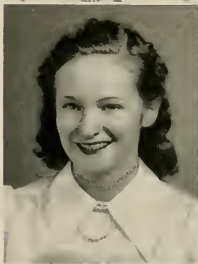


MARY THOMAS SMITH

Greenville, N. C.

*Grammar and Public School Music*

Glee Club 1, 2, 3, 4; Poe Society 1, 2, 3, 4; Orchestra 4.



MAVIS MARIE SMITH

Mebane, N. C.

*Home Economics and Science*

Science Club 2, 3; Home Economics Club 2, 3, 4; Y.W.C.A. 2.



SARAH LOUCILE SMITH

Fairmont, N. C.

*Primary Education*

Mars Hill Junior College 1, 2; A.C.E. 3; Y.D.C. 4.

THEMISE SMITH

Deep Run, N. C.

*Grammar Grade*

Y.W.C.A. 1, 2, 3, 4; A.C.E. 3, 4; Y.D.C. 4; W.A.A. 2, 3; F.T.A. 3, 4; Treasurer 4; B.S.U. Council 4.

EVELYN ELIZABETH SNIPES

Ahoskie, N. C.

*Primary Education*

Chowan Junior College 1, 2; Poe Society 3, 4; A.C.E. 3, 4; Y.W.C.A. 4; W.A.A. 3, 4; Y.D.C. 3, 4.

TECOAN

# SENIORS



HELEN SORRELL

Hubert, N. C.

*Home Economics and Science*

Campbell College 1, 2; Home Economics Club 3, 4; Science Club 3, 4; B.S.U. Council 4.



MARGIE SPIVEY

Greenville, N. C.

*Primary Education*

Poe Society 1, 2, 3, 4; Staff of Teco Echo 2, 3; Y.D.C. 4; A.C.E. 2, 3.



HAZEL RUTH STARNES

Hickory, N. C.

*Music Edu. and Grammar Grade*

Queens College; Glee Club 2, 3; Band 2, 3; Y.W.C.A. 2, 3, 4; Cabinet 4; M.S.A. 2, 3, 4; Cabinet 4; Vice-President of M.S.C.; President of W.S.G.A. Summer School 3; Poe Society 2, 3, 4; Marshal 4; A.C.E. 3; Entertainment Committee 4; Senior Superlative; Who's Who Among Students in American Colleges and Universities 4.

FLORA MARGARET STATON

New London, N. C.

*Primary Major*

Y.D.C. 4; A.C.E. 3, 4.



GRACY STEPHENSON

Halifax, N. C.

*Commerce and French*

Y.W.C.A. 1; Emerson Society 1; Phi Sigma 2; Commerce Club 3.

RACHEL TEMPLETON

Union Grove, N. C.

*Commerce and Social Science*

Mars Hill Junior College 1, 2; W.S.G.A. Summer School 4; Social Chairman Commerce Club 4; Alpha Iota Sorority 4; Orchestra 3, 4; Band 4; Who's Who Among Students in American Colleges and Universities 4; Commerce Club 4; I.R.C. 4.



# SENIORS

HILDA TEW  
Clinton, N. C.

*Commerce and History*

Glee Club 1, 2, 3; Commerce Club 1; Alpha Iota Sorority 4.



SUSIE THARRINGTON  
Warrenton, N. C.

*Grammar Grade*

Y.W.C.A. 3, 4; A.C.E. 3, 4; Y.W.A. 2, 3, 4; B.T.U. 3, 4; Secretary 3; President 4; B.S.U. Council 4.



EILEEN TOMLINSON  
Black Creek, N. C.

*Physical Education and Science*

W.C.U.N.C. 1; Poe Society 2, 3, 4; Y.W.C.A. 1, 2, 3, 4; Y.D.C. 4; Science Club 3, 4; Cheer Leader 2, 3, 4; W.A.A. 1, 2, 3, 4; President 4; Chairman of Freshman W.A.A. Party 3; Head of Hockey 3; Head of Track 2; Track Team 2; Tennis Team 4; Varsity Basketball 2; Varsity Soccer 2, 3; Varsity Softball 3; Varsity Hockey 3, 4; Varsity Volley Ball 2, 3; Senior Superlative.



ELIZABETH K. TOMLINSON  
Black Creek, N. C.

*Home Economics and Science*

W.C.U.N.C. 1; Y.W.C.A. 4; Y.D.C. 4; Science Club 3, 4; Home Economics Club 2, 3, 4; W.A.A. 2, 3, 4; Head of Intramural Softball 3; Varsity Basketball 2, 3; Varsity Softball 2, 3; Varsity Volley Ball 2.

DOROTHY REBECCA TURNER  
Pink Hill, N. C.

*Home Economics and Science*

Y.W.C.A. 1, 2, 3; Junior Y Cabinet 1; A.C.E. 1; Glee Club 1, 3; Home Economics Club 3, 4; Science Club 3, 4; Secretary 4; M.S.A. Cabinet 2, 3, 4.



EDNA M. TURNAGE  
Greenville, N. C.

*Home Economics and Science*

Home Economics Club 1, 2, 3, 4; TECOAN Representative 3; President 4; Teco Echo Reporter 1.

TECOAN

# SENIORS



NORMA LEE TYNDALL  
Kinston, N. C.  
*Home Economics and Science*  
Y.W.C.A. 1, 2, 3; Home Economics Club 2, 3, 4.

HILDA ROSE UPCHURCH  
Lillington, N. C.  
*Grammar Grade*  
Campbell College 1, 2; A.C.E. 4.



ZORA MELBA WALLER  
Kinston, N. C.  
*Commerce and French*  
A.C.C. 1; Hall Proctor 4; Commerce Club 2, 4; Phi Sigma 2, 3, 4; Y.D.C. 4; Y.W.C.A. 2; Alpha Iota Sorority 4; Glee Club 2.

AGNES WATSON  
Kenly, N. C.  
*Home Economics and Science*  
Lanier Society 1, 2, 3, 4; Treasurer 2; Marshal 4; Home Economics Club 2, 3, 4; Treasurer 4; Delegate to N. C. Home Economics Convention 3; President of N. C. Home Economics Club 4; Science Club 2, 3; Y.W.C.A. 2.



DAVID WATSON  
Southport, N. C.  
*History and Physical Education*  
Louisburg College 1, 2; Basketball 3; Varsity Club 4.

HELEN WETHERINGTON  
Clarks, N. C.  
*Primary*  
Peace Junior College 1, 2; A.C.E. 3, 4.

E.C.T.C.

# SENIORS

MARTHA E. WHELESS

Louisburg, N. C.

*Commerce and English*

Y.W.C.A. 1: Poe Society 1, 2, 3, 4; Alpha Iota Sorority 4; Commerce Club 1, 2, 3, 4; Treasurer 3, 4; English Club 1, 2; Senior Play (Worlds Premier of Ramona).



MABEL WILDER

Garner, N. C.

*Grammar Grade*

Poe Society 1; Y.W.C.A. 3, 4; A.C.E. 3, 4.



ANNIE ALLEN WILKERSON

Roxboro, N. C.

*English and History*

Y.W.C.A. Cabinet; W.S.G.A.; Vice-President of Y.W.C.A.; Chairman of Social Committee.

ELLEN WILLIAMS

Maysville, N. C.

*English and History*

English Club 2, 3, 4; History Club 1, 2; Poe Society 1, 2; Y.W.C.A. 1, 4; M.S.A. Delegate 2.



JOE WILLIAMS

Greenville, N. C.

*History and Physical Education*

LOIS WILLIAMS

Kenansville, N. C.

*History and French*

Phi Sigma 2, 3, 4; International Relations Club 3.

TECDAN

# SENIORS

VIRGINIA WILLIAMS  
Kinston, N. C.

*Primary Edu. and Public Sch. Music*

A.C.C. 1; Y.W.C.A. 1, 2; Glee Club 1, 3; A.C.E. 3, 4; Band 3, 4; Secretary 3, 4; Vice-President of A.C.E. 4; Y.D.C. 4; Mixed Chorus 4; Junior Orchestra 3.

M. ELIZABETH WILSON  
Greenville, N. C.

*Primary*

ELIZABETH M. WILSON  
Crossnore, N. C.

*Commerce and Science*

NANCY FLEMING WINSTON  
Youngsville, N. C.

*Home Economics and Science*

Mars Hill Junior College 1, 2; Poe Society 3; Home Economics Club 3, 4; Dormitory Hostess 4; B.S.U. Council Summer School 3.

DORIS WOODARD  
Kenly, N. C.

*Grammar Grade*

A.C.E. 3, 4; F.T.A. 3.

MADOLINE WOOLARD  
Greenville, N. C.

*Commerce*

Commerce Club 4; Y.D.C. 4.



E.C.T.C.

# SENIORS

MARY CATHERINE WOOLARD  
Greenville, N. C.

*Primary and Public School Music*

Foe Society 1, 2, 3, 4; Glee Club 2, 3, 4; A.C.E. 3, 4



RUTH WRIGHT  
St. Pauls, N. C.

*Primary Education*

A.C.E. 4; Y.D.C. 4; Y.W.C.A. 4.



JANE M. YONGUE  
Brevard, N. C.

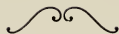
*Home Economics and Science*

Brevard Junior College; Y.W.C.A. 3, 4; Home Economics Club 3, 4; Y.D.C. 4.

ADA ROSE YOW  
Henderson, N. C.

*Primary Education*

Peace Junior College; Glee Club 2, 3, 4; Y.W.C.A. 2, 3, 4; P.S.A. 2, Secretary 3, President 4; A.C.E. 2, Vice-President 3, President 4.



TEEDAN



# SENIOR CLASS SUPERLATIVES

- IDA MARIA GEORGE.....Most Studious
- ERLENE SAWYER.....Most Intellectual
- MARY ELIZABETH BEASLEY.....Best Dancer
- DAVID BREECE.....Best Dancer
- HAZEL STARNES.....Best Dressed
- MERVIN FRAZELLE.....Best Dressed



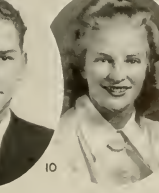
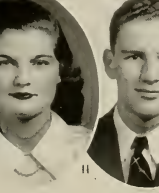
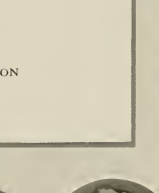
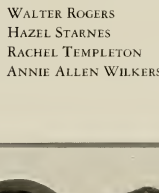
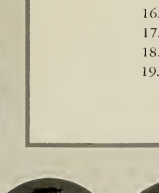
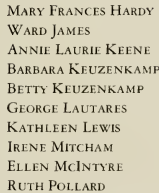
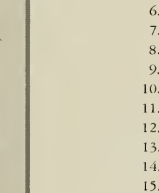
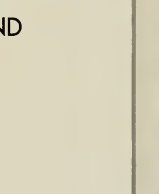
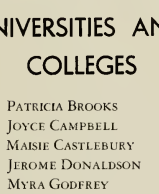
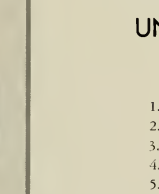
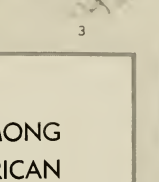
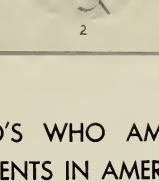
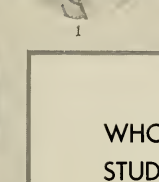
MAISIE CASTLEBURY.....Most Capable  
DORIS BLALOCK.....Most Popular  
LYDIA PINER.....Most Witty  
FRANCES CULLEDGE.....Cutest  
EILEEN TOMLINSON.....Most Athletic  
FLOYD HINTON.....Most Athletic





## SENIOR CLASS SUPERLATIVES

HAZEL OWENS ..... Prettiest  
 RACHEL TEMPLETON ..... Most Dependable  
 ELIZABETH COPPEDGE ..... Best Personality  
 REBECCA SHANKS ..... Most Friendly  
 MARY GRANT BAILEY ..... Most Versatile  
 MATT PHILLIPS ..... Most Handsome  
 RAY ST. AMAND ..... Most Original



## WHO'S WHO AMONG STUDENTS IN AMERICAN UNIVERSITIES AND COLLEGES

1. PATRICIA BROOKS
2. JOYCE CAMPBELL
3. MAISIE CASTLEBURY
4. JEROME DONALDSON
5. MYRA GODFREY
6. MARY FRANCES HARDY
7. WARD JAMES
8. ANNIE LAURIE KEENE
9. BARBARA KEUZENKAMP
10. BETTY KEUZENKAMP
11. GEORGE LAUTARES
12. KATHLEEN LEWIS
13. IRENE MITCHAM
14. ELLEN MCINTYRE
15. RUTH POLLARD
16. WALTER ROGERS
17. HAZEL STARNES
18. RACHEL TEMPLETON
19. ANNIE ALLEN WILKERSON

9 o'clock back



*Officers*

to . . . 6 o'clock"



DA RUTH KNOWLES  
President

CHARLES MARKS  
Vice-President

WILDA ROYALL  
Secretary

RUTH BRITT  
Treasurer

# JUNIORS

*First Row:* EUGENIA ABEYOUNIS, Greenville, N. C.; HOWARD ADAMS, Clayton, N. C.; THELMA ADAMS, Benson, N. C.; FRANCES ALLEN, Greenville, N. C.; VIRGINIA LEE ALLEN, Greenville, N. C.; BESSIE ANDERSON, Middlesex, N. C.; KATHLEEN ASBELL, Edenton, N. C.; MARGENETTE ASBELL, Sunbury, N. C.; VIRGINIA ATKINSON, Farmville, N. C.

*Second Row:* MARY KATE AUTRY, Salemburg, N. C.; FRANCES AVERETTE, Wake Forest, N. C.; MILDRED AYCOCK, Lucama, N. C.; MARY T. BAILEY, Kinston, N. C.; BERNICE BALANCE, Lake Landing, N. C.; ESTELLE BAKER, Durham, N. C.; MARGIE BAKER, Ahoskie, N. C.; MARTHA REID BAKER, Reidsville, N. C.; JENNINGS BALLARD, Alexis, N. C.

*Third Row:* ELSIE BARKER, Trenton, N. C.; DELLA BARKLEY, Severn, N. C.; KATHLEEN BARKLEY, Elm City, N. C.; JUANITA BASS, Black Creek, N. C.; VOLENA BASS, Black Creek, N. C.; KATRINA BAUM, Swan Quarter, N. C.; BETTY CLAIRE BEAM, Grover, N. C.; NELL BEDDARD, Snow Hill, N. C.; RUSSELL BEDDARD, Winterville, N. C.

*Fourth Row:* ARLENE BELCHE, Colerain, N. C.; MYRTLE LEIGH BELCHE, Rich Square, N. C.; LEOLA MAE BELL, Arapahoe, N. C.; MARGORIE BELL, Rocky Mount, N. C.; MELZA BOSTIC, Magnolia, N. C.; FRANCES BOYD, Lanes, S. C.; LILLIAN WHITE GARDNER, Farmville, N. C.; HAZEL BOYKIN, Micro, N. C.; HAZEL BOWEN, Willard, N. C.

*Fifth Row:* VERNA RAE BRADLEY, Rocky Mount, N. C.; RUTH BRAY, Elizabeth City, N. C.; NANNIE BRIGGS, Hurdle Mills, N. C.; DOROTHY BRINKLEY, Greenville, N. C.; ROSE BRITT, Four Oakes, N. C.; RUTH BRITT, Wendell, N. C.; ALVA BROWN, Belcross, N. C.; KATHERINE BROWN, Burgaw, N. C.; MARY ELIZABETH BROWN, Gatesville, N. C.



E. C. C.

TECOAN



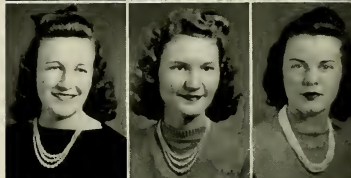


# JUNIORS

*First Row:* MARY QUINN BROWN, Beaulaville, N. C.; WILBUR BROWN, Greenville, N. C.; CATHERINE BRYANT, Rich Square, N. C.; SYLVIA BURNS, Siler City, N. C.; HELEN BUTNER, Greenville, N. C.; LOIS LEE BRITTON, Seaboard, N. C.; CLEO BURNEY, Lumberton, N. C.; JOHN F. CARSON, Bethel, N. C.; EUGENE CARSON, Bethel, N. C.



*Second Row:* LOUISE CARTER, Woodland, N. C.; MCGREE CARTER, Rose Hill, N. C.; RUTH CHANDLER, Virgilina, Va.; MARY LOUISE CHAPPELL, Belvidere, N. C.; VERNON CHASON, Lumber Bridge, N. C.; ELSIE V. CHERRY, Pactolus, N. C.; THELMA CLARK, Granville, Va.; DOROTHY CLEMENT, Nelson, Va.; CELIA COBB, Merry Hill, N. C.



*Third Row:* JULIA CAROLYN COFFMAN, Wilson, N. C.; ROSE COLLIE, Wilmington, N. C.; TOMMIE LOU CORBITT, Gatesville, N. C.; DOROTHY COX, Greenville, N. C.; LA VERNE COX, Winterville, N. C.; SARAH ELIZABETH COX, Goldsboro, N. C.; THOMAS E. COX, Greenville, N. C.; HENRY CRANK, Elizabeth City, N. C.; CELIA BLANCHE DAIL, Durant's Neck, N. C.



*Fourth Row:* DOROTHY DALRYMPLE, Jonesboro, N. C.; MARY ELIZABETH DARDEN, Jacksonville, N. C.; ELSIE M. DAUGHERTY, Dover, N. C.; NORMA DAVIS, Marshallberg, N. C.; RUTH DAVIS, Hillsboro, N. C.; DORIS DAWSON, Seven Springs, N. C.; MARY AGNES DEAL, Greenville, N. C.; JULIA DEAN, Oxford, N. C.; JIMMY DEMPSEY, Wilson, N. C.



*Fifth Row:* VIRGINIA O. DIXON, Leasburg, N. C.; YVONNE DOWNING, Fayetteville, N. C.; ROSE CARLTON DUNN, Rocky Mount, N. C.; DORIS DUVAL, Greenville, N. C.; LILLIE EASON, Selma, N. C.; CLARISSA B. EDWARDS, Winterville, N. C.; FREDERICK ERVIN, Richlands, N. C.; CLIFTON EVANS, Greenville, N. C.; ELDRED EVANS, Magnolia, N. C.

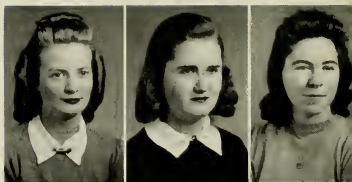






# JUNIORS

*First Row:* WILLIE EVANS, Magnolia, N. C.; CLIO FARLESS, Merry Hill, N. C.; RACHEL FARRIOR, Burgaw, N. C.; PECOLIA FISHER, St. Pauls, N. C.; KATE FOLEY, Greenville, N. C.; LILLIAN WHITE GARDNER, Farmville, N. C.; ELIZABETH FORREST, Ayden, N. C.; MARJORIE GARDNER, Elm City, N. C.; CAMILLE GASKINS, Windsor, N. C.



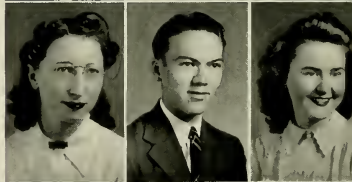
*Second Row:* CAROLYN WILSON GATLING, Gates, N. C.; MARGARET GATLING, Gates, N. C.; ELIZABETH GAY, Jackson, N. C.; ROSEBUD GAYLORD, Roper, N. C.; FRANCES DAWSON GILLIKIN, Goldsboro, N. C.; HILDA GILLIKIN, Beaufort, N. C.; RUBY GOFF, Falcon, N. C.; SARA MEADOWS GORHAM, New Bern, N. C.; RUBY GRANT, Greenville, N. C.



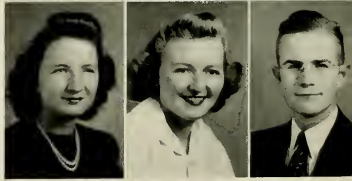
*Third Row:* JESSE GRAY, Stokes, N. C.; CARLOTTA GRUSSNER, Schenectady, N. Y.; CAROLYN V. GRIFFIN, Rocky Mount, N. C.; MARY GUINGTON, Rocky Mount, N. C.; DOROTHY GUPTON, Louisburg, N. C.; MARIE GUPTON, Louisburg, N. C.; LULA FOSTER GUPTON, Louisburg, N. C.; JUSTINE GUNLEY, Goldsboro, N. C.; EDITH GUTHRIE, Bethel, N. C.



*Fourth Row:* EDITH VARINA HARRIS, Elizabeth City, N. C.; JACK HARRIS, Stovall, N. C.; MARY LOU HARRIS, Elizabethtown, N. C.; MARY LUCILLE HARRIS, Louisburg, N. C.; WILLIAM C. HARRIS, Greenville, N. C.; LILL M. HART, Ayden, N. C.; SPENCER HATLEY, Albemarle, N. C.; GEORGE HEAFNER, Lincoln, N. C.; CHRISTINE HERRING, Goldsboro, N. C.



*Fifth Row:* JULIETTE HICKMAN, Sanford, N. C.; ELIZABETH HAISLEY, Hamilton, N. C.; ROBERT HOLLAR, Greenville, N. C.; JEWELL HOLLEY, Leesville, S. C.; MATTIE LAWRENCE HOLLIDAY, Greenville, N. C.; KATIE B. HONEYCUTT, Holly Springs, N. C.; MARY D. HORNE, Greenville, N. C.; DALLAS HOWARD, Roseboro, N. C.; LUCILLE HOWELL, Seaboard, N. C.



E.C.T.C.



# JUNIORS

*First Row:* ANN HURFF, Driver, Va.; ELEANOR JENKINS, Aulander, N. C.; HELEN MARGARET JENKINS, Milmaukee, N. C.; LULA MAE JENKINS, Orrum, N. C.; ALICE JOHNSON, Ayden, N. C.; EMILY JOHNSON, Willard, N. C.; ERVIN M. JOHNSON, Raleigh, N. C.; ETHEL JOHNSON, Roseboro, N. C.; NORENE JOHNSON, Goldsboro, N. C.

*Second Row:* SHIRLEY JOHNSON, Beaufort, N. C.; GRACE EVELYN JOHNSON, Kinston, N. C.; DAISY RAYE JONES, Sunbury, N. C.; MABEL KENNEDY, Pink Hill, N. C.; JESSIE KEITH, Kerr, N. C.; CORNELIA KEUZENKAMP, Greenville, N. C.; EVELYN KILPATRICK, Hookerton, N. C.; FRANKLIN D. KIZER, Washington, N. C.; IDA RUTH KNOWLES, Roper, N. C.

*Third Row:* VERNON KUETEMEYER, Chicago Heights, Ill.; RUTH MAE LANCASTER, Castalia, N. C.; EDNA RUTH LANCE, Durham, N. C.; ELEIDA RAE LASSITER, Greenville, N. C.; JULIA LATHAM, Washington, N. C.; HARRIETTE LAWRENCE, Tarboro, N. C.; AUDREY LEE, Arapahoe, N. C.; REBECCA LEWIS, Bethel, N. C.; MILDRED LIVERMAN, Columbia, N. C.

*Fourth Row:* CHARLES L. MARKS, Whitakers, N. C.; HARRIET ANNE MARSHBURN, Wilmington, N. C.; LURA ALICE MASON, Atlantic, N. C.; SAVONNE MATHEWS, Kipling, N. C.; MRS. CARRIE R. MARTIN, Pantego, N. C.; BETH MATTHEWS, Roanoke Rapids, N. C.; EDITH E. MATTHEWS, Rose Hill, N. C.; LYDIA HILL MAY, Spring Hope, N. C.; LOREEN MAYO, Aurora, N. C.

*Fifth Row:* WILEY MAYO, Mesic, N. C.; EDNA L. MITCHELL, Hobbsville, N. C.; EVELYN MITCHELL, Kittrell, N. C.; POLLY MITCHELL, Troyville, N. C.; ERLENE MITCHELL, Bunn, N. C.; LOUISE MIZELLE, Enfield, N. C.; EDITH MOORE, Delco, N. C.; WALTER R. MORITZ, Rosedale, L. I., N. Y.; FRANK W. MORRIS, Gastonia, N. C.





# TECOAN



# JUNIORS

*First Row:* RUTH MOYE, Snow Hill, N. C.; EMILY MURPHY, Atkinson, N. C.; VIRGINIA LOUISE MURPHY, Louisburg, N. C.; ROBERT MUSSELWHITE, Greenville, N. C.; LORRAINE MYERS, Aulander, N. C.; LOIS McCORMICK, Goldsboro, N. C.; DOROTHY McDANIEL, Woodland, N. C.; MARIE McGOWAN, Greenville, N. C.; LOONIS MCGLOHON, Ayden, N. C.

*Second Row:* MELISHA McLAMB, Roseboro, N. C.; VIVIAN McLAMB, Bethel, N. C.; RUTH CAROL NIX, Traphill, N. C.; ELIZABETH NOE, Bath, N. C.; RUTH M. NORVARAH, Roper, N. C.; CHRISTINE S. PALMER, Roxboro, N. C.; ALVANY PARKER, Rocky Mount, N. C.; GERTRUDE PARKER, Clinton, N. C.; KATE BRYAN PARKER, Veroda, N. C.

*Third Row:* MARTHA PARROTT, Kinston, N. C.; ELIZABETH SPRUILL PARTIN, Littleton, N. C.; MIRIAM PATRICK, Grifton, N. C.; ELIZABETH PEAL, Creswell, N. C.; ROSA L. PECORA, Bowden, N. C.; EDNA PIERCE, Apex, N. C.; ELIZABETH PIERCE, Colerain, N. C.; DOROTHY POWELL, Warsaw, N. C.; EDITH POWELL, Franklinton, N. C.

*Fourth Row:* JEAN POWELL, Kerr, N. C.; NETTIE PEARL PRICE, Wendell, N. C.; MAY PRICE, Wilmington, N. C.; FRANCES PRIVOTT, Edenton, N. C.; MARY PRIVOTT, Edenton, N. C.; LUCILLE PRIVETTE, Spring Hope, N. C.; DAPHNE ADELE REES, Greensboro, N. C.; MARTHA RICE, Enfield, N. C.; VIRGINIA LOVE RIDGLE, Saint Pauls, N. C.

*Fifth Row:* GEORGE W. ROBERTS, Forbes, N. C.; WILDA ROYALL, Clinton, N. C.; MARY HARVEY RUFFIN, Wilson, N. C.; JUANITA RUSH, Jr., Clyde, N. C.; EVELYN SATTERFIELD, Roxboro, N. C.; DORIS SATTERWHITE, Oxford, N. C.; EMMY LOU SCALES, Greenville, N. C.; GLADYS SCULL, Raeford, N. C.; VIRGINIA SEEGARS, Fairfield, N. C.



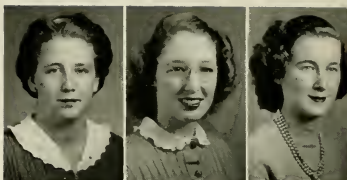
E.C.T.C.





# JUNIORS

*First Row:* LOUISE SHEARON, Dunn, N. C.; FRANCES B. SOUTHERLAND, Burgaw, N. C.; LENA MAE SMITH, Greenville, N. C.; NINA SMITH, Greenville, N. C.; MARION L. SMITH, Elizabeth City, N. C.; MAUDE EMILY SMITH, Fountain, N. C.; NANCY ALBERTA SMITH, Ayden, N. C.; MILDRED SPANGLER, Danville, Va.; LEON RAY SPARROW, Ransomville, N. C.



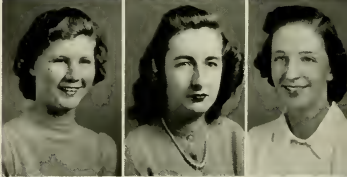
*Second Row:* ROXIE SPEAR, Creswell, N. C.; DOROTHY HILL SPENCE, Goldsboro, N. C.; VIRGINIA SPENCER, Swan Quarter, N. C.; A. ELIZABETH STACY, Rutherfordton, N. C.; AUDREY STANLEY, Swansboro, N. C.; JOE STATON, Greenville, N. C.; HULDA FRANCES STRICKLAND, Spring Hope, N. C.; LAURA STRICKLAND, Middlesex, N. C.; MARTHA SUE STROUD, Seven Springs, N. C.



*Third Row:* GLADYS STURDIVANT, Clayton, N. C.; FRANCES SUTHERLAND, Wilmington, N. C.; MARGARET TART, Dunn, N. C.; FRANCES A. TAYLOR, Bethel, N. C.; HAROLD TAYLOR, Stantonburg, N. C.; H. LOUISE TAYLOR, Maple, N. C.; HELEN TAYLOR, Bethel, N. C.; SIBYL CHRISTINE TAYLOR, Seaboard, N. C.; ESTALINE TEW, Godwin, N. C.



*Fourth Row:* ELIZABETH THOMASSON, South Hill, Va.; JESSIE THOMPSON, Goldsboro, N. C.; CHRISTINE TRIPPE, Ransomville, N. C.; ANNIE RUTH TUCKER, Grimesland, N. C.; WALTER TUCKER, Greenville, N. C.; MRS. J. F. TYSON, Farmville, N. C.; VERNON TYSON, Greenville, N. C.; EMILY ROSEMARY UNDERWOOD, St. Pauls, N. C.; ELIZABETH WADE, Williston, N. C.



*Fifth Row:* DAN WADDELL, Hendersonville, N. C.; BERTIE LEE WARD, Manteo, N. C.; MYRTLE WARD, Edenton, N. C.; MADELINE WARREN, Roseboro, N. C.; EDITH WARRICK, Seaboard, N. C.; LALLAH B. WATTS, Raleigh, N. C.; DOROTHY WEEKS, Rocky Mount, N. C.; NORMA WELLONS, Kenly, N. C.; JEAN WENDT, Wilmington, N. C.



E.T.C.



# JUNIORS

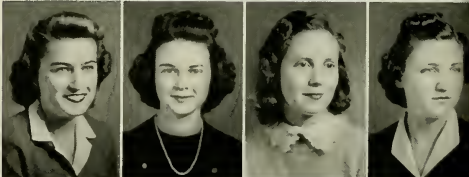
*First Row:* AMY CHARLOTTE WHITE, Bayboro, N. C.; HAZEL WHITE, Creswell, N. C.; MARY EDITH WHITE, Portsmouth, Va.; LULA MAE WHITEHURST, Greenville, N. C.



*Second Row:* JAMES WHITFIELD, Greenville, N. C.; VIRGINIA WHITLEY, Nashville, N. C.; DOROTHY WIGGINS, Trotville, N. C.; ANNIE LAURA WILKERSON, Bailey, N. C.



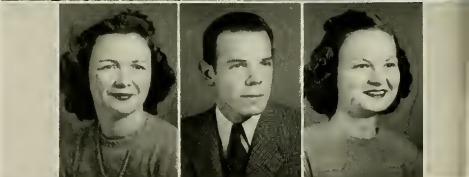
*Third Row:* JANE WILLIAMS, Clinton, N. C.; NORMA KATHRYN WILLIAMS, Asheville, N. C.; MARTHA WINDLEY, Bridgeton, N. C.; MARGARET WISE, Jackson, N. C.



*Fourth Row:* HELEN WOLFE, Washington, N. C.; MARGARET LEE WOOD, Troy, N. C.; LUCILE WRIGHT, Tabor City, N. C.; DOROTHY WYCOFF, Castle Hayne, N. C.



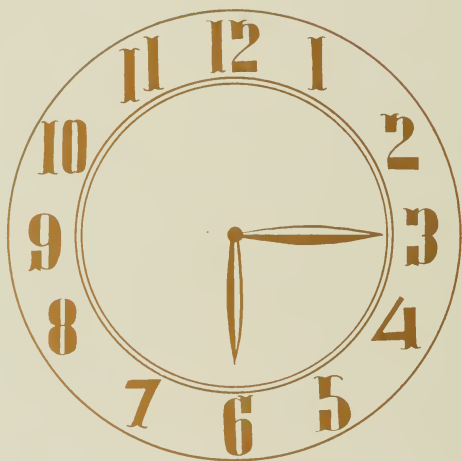
*Fifth Row:* MARY FRANCES YOUNG, Angier, N. C.; ROBERT YOUNG, Burnsville, N. C.; LOYS ORMAND TURNAGE, Ayden, N. C.





Three's a crowd... High up... What's the latest? ... Birdies... Looking down... And no where to go... Climbing... Studious... Beside the Wishing Well... They're our choice...

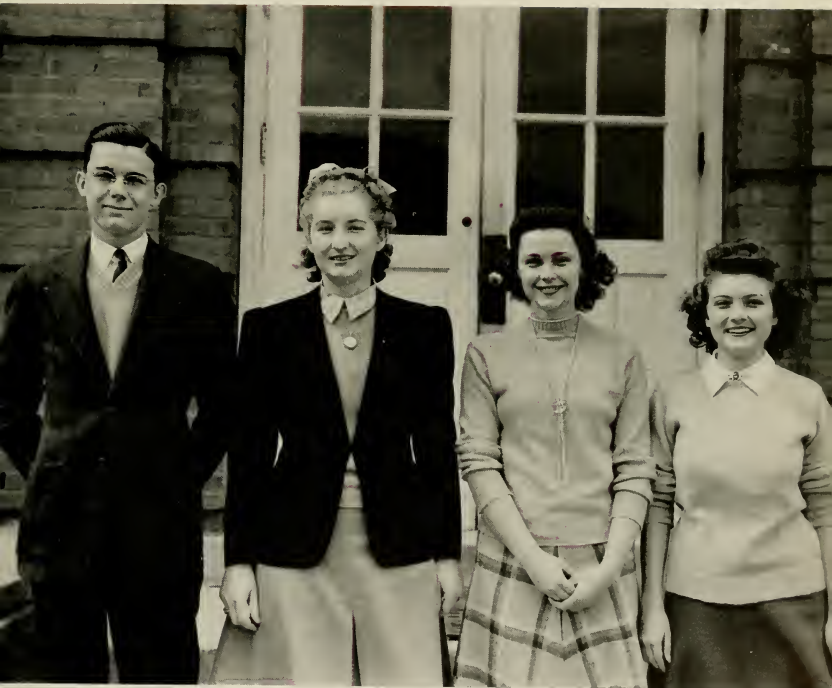
"6 o'clock . . .



*Officers*



back to 3 o'clock"



NORMAN WILKERSON  
President

DOROTHINE MASSEY  
Vice-President

ESTELLE DAVIS  
Secretary

HELEN PEACOCK  
Treasurer

## SOPHOMORES



*First Row:*

LOUISE AVERETT  
MILDRED LEE AYCOCK  
ALENE BAILEY  
DOROTHY BALLANTINE

*Second Row:*

CATHERINE BARNHILL  
JONNIE FAYE BARNES  
BEATRICE BARNETTE  
RUBY ELIZABETH BATCHELOR

*Third Row:*

ESTELLE BATTEN  
GLADYS BEARD  
ANNETTE BELL  
MYRA ESTELLE BELL

*Fourth Row:*

ALMA LOUISE BENNETT  
MILDRED BEVERLY  
MARY ALICE BLACKHAM  
ELIZABETH BISHOP

*Fifth Row:*

RUTH BIZZELLE  
DOROTHY MCKOY BONEY  
MARGARET BOONE  
DOROTHY BOSWELL

*Sixth Row:*

MARLOW F. BOSTIC  
JOSEPH BOWERS  
MARIE BRANCH  
PEARL BRAVALDA

*Seventh Row:*

LOUISE BRETT  
DORIS BRITT  
EDNA BRITT  
MARTHA BROOKS



# SOPHOMORES

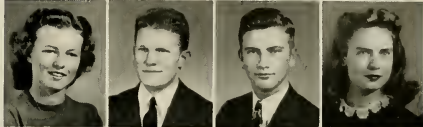
*First Row:*

MARGARET BRAUGHTON  
ANNA LEE BROWN  
DORIS MAE BROWN  
HELEN JOSEPHINE BROWN



*Second Row:*

RACHEL BROWN  
WILEY BROWN  
JAMES BULLOCK  
NANCY GRAY BURDEN



*Third Row:*

LOIS CAIN  
DOROTHY CAINE  
ELLA BLAND CALHOUN  
STELLA CARR



*Fourth Row:*

ZALIA CAROWAN  
MARGARET CASH  
J. L. CASTEEN  
EVELYN CAVANAUGH



*Fifth Row:*

SARA CAVANAUGH  
KATHERINE CHAPPELL  
EMILY ANN COLLINS  
EVELYN CONYERS



*Sixth Row:*

FLORENCE COOKE  
CHARLOTTE RUTH COREY  
LEONA COUNCIL  
MARGARET COX



*Seventh Row:*

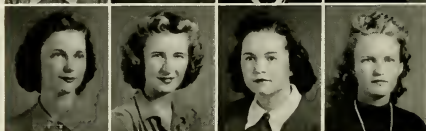
MIRIAM CREW  
SAMUEL HOWARD CRANDELL  
SUE B. CRENSHAW  
MARGARET CROCKER



## SOPHOMORES



*First Row:*  
CLELLIE MAE CROOM  
ETHEL CROOM  
JANE ELAM CURRIN  
NANCY DARDEN



*Second Row:*  
ESTELLE DAVIS  
MARJORIE G. DAVIS  
RUTH E. DAVIS  
ELIZABETH DAWSON



*Third Row:*  
WISTENA DEESE  
ANNIE LAURIE DENNING  
MILDRED DEWAR  
LOUISE DOZIER



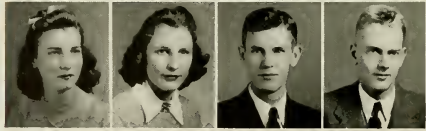
*Fourth Row:*  
JOYCE LOUISE DUNHAM  
PRESTON DUNN  
JANIE O. EAKES  
PEARL EDWARDS



*Fifth Row:*  
FRANCES ELLIOT  
VIRGINIA ENGLISH  
ADMINTA EURE  
FAYE EVERETTE



*Sixth Row:*  
ROSA FARRIOR  
DAMNON FIELDS  
MARGARET FINLEY  
LEAH FLEMING

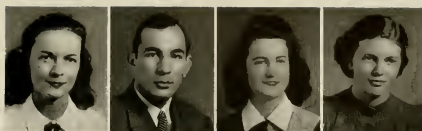


*Seventh Row:*  
MARTHA RACHEL FLEMING  
MARY LONG FORD  
Z. W. FRAZELLE  
MALCOLM FRINK

# SOPHOMORES

*First Row:*

SOPHIA G. FRIZZELLE  
 JAMES GAINAKAS  
 DOROTHY GARNER  
 MARY B. GASKINS



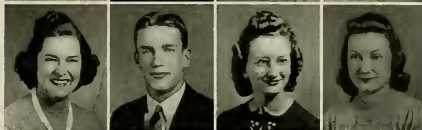
*Second Row:*

MAE GILLIAM  
 AGATHA GOLDEN  
 GWEN GOODSON  
 RUBY GORE



*Third Row:*

LOIS GREENE  
 WILLIAM M. GREENE  
 MURTIE GRESHAM  
 AGNES GRIFFIN



*Fourth Row:*

EVAN GRIFFIN  
 MARGARET L. GURGANUS  
 RUTH HALL  
 ANNETTE HANDLEY



*Fifth Row:*

CAROLINE HARPER  
 JEAN HARRIS  
 LAURA HASKINS  
 MARY JORDON HAWKS



*Sixth Row:*

BEATRICE HELMS  
 EUNICE HERRING  
 CAROLINE HINES  
 NORMA HODGES



*Seventh Row:*

MARIAN HOGGARD  
 KATHRYNE HOLDER  
 MARGIE LYNETTE HOLLOWELL  
 VIOLET HOPSON



## SOPHOMORES



*First Row:*  
LORAINÉ HORNE  
PEARL HOUSE  
GRACE HUMBLE  
BESSIE FAY HUNT



*Second Row:*  
SUSIE SANKIE HUTCHINSON  
CLAIRE JENKINS  
LOUISE JENNINGS  
LOIS JERNIGAN



*Third Row:*  
LINA PEARL JOHNSON  
MARGARET JOHNSON  
MARY TYSOR JOHNSON  
TRUMAN JOHNSON



*Fourth Row:*  
GRACE JONES  
MARJORIE JONES  
KATIE GEORGE KENNEDY  
JOHNNYE BROWN KENNEDY



*Fifth Row:*  
GENE NOELL KING  
KATHERINE KYZER  
DORIS LAMB  
MADGE LANE



*Sixth Row:*  
NANCY LOU LANCASTER  
JEWEL LANGLEY  
IRIS LANGSTON  
HILDA MERRIMAN LEE



*Seventh Row:*  
FRANCES LEGGETT  
CLAIRE LEWIS  
OLA LEA LILLERY  
MARY LOUISE LINDSAY

ETC.

## SOPHOMORES

*First Row:*

WALTER W. MALLARD  
HILDA RUTH MARTIN  
DOROTHINE MASSEY  
HELEN MASSEY



*Second Row:*

JUNE MAY  
NELL McCULLEN  
VIRGINIA CRAIG MCGEE  
MARGARET EUNICE McKEITHAN



*Third Row:*

MABEL McLAWHORN  
ARLINE MERCER  
WINIFRED MERCER  
AILINE MEWBORN



*Fourth Row:*

CAROLINE MILES  
MILDRED MITCHELL  
SARAH E. MOORE  
MARY MORRIS



*Fifth Row:*

MARGUERITE MOYE  
REBECCA MOYE  
HELEN MOYINGS  
KATHLEEN MULLEN



*Sixth Row:*

BRUCE MURRAY  
LUCILLE NELMS  
ZULA NEWMAN  
MILDRED T. OWENS



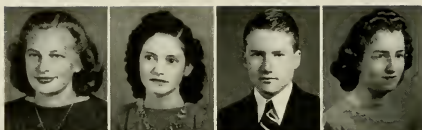
*Seventh Row:*

ELIZABETH PAGE  
HELEN PEACOCK  
ANNE POYTHRESS  
JOYE PARNELL





## SOPHOMORES



*First Row:*  
ESTHER PARKER  
MARY JOHN PARKER  
DALAS PEEL  
MARIE PENUEL



*Second Row:*  
FAYE PEOPLES  
NELL PETERSON  
JEAN PARIS PHILLIPS  
ELLEN MARIE PIERCE



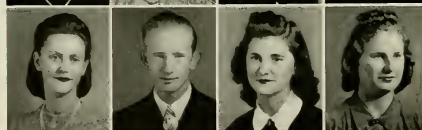
*Third Row:*  
VERNELLE B. PIERCE  
MARGARET POLLOCK  
DAPHNE POTTER  
SARA POTTER



*Fourth Row:*  
OVELLA PRICE  
BOBBIE LORRAINE PRITCHARD  
MINNIE QUINN  
HAZEL RAPER



*Fifth Row:*  
FRANCES JEAN RATCLIFFE  
MARGIE RAYNOR  
MARGARET WADE REED  
ADELAIDE E. READE



*Sixth Row:*  
BEATRICE REYNOLDS  
EDWARD REYNOLDS  
SARAH RICHARDSON  
MAGGIE PEARL RIVENBARK



*Seventh Row:*  
MOZELLE ROGERS  
MYRTLE ROGERS  
RANDOLPH ROPER  
GRACE ROSS

E.C.T.C.

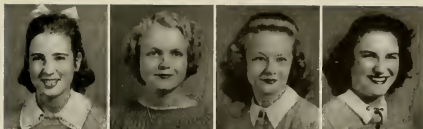


# SOPHOMORES

TECOAN

*First Row:*

JULIA DEANE SANDLIN  
HELEN KELLER SCARBOROUGH  
FRANCES SEARS  
MARJORIE SELBY



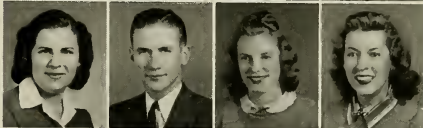
*Second Row:*

CHARLOTTE ELLEN SHEARIN  
DUBOSE SIMPSON  
METSEL SIMMONS  
KATHERINE KEITH SMITH



*Third Row:*

TIZZIE SMITH  
MORRISON SMITH  
MARGARET E. SPIRES  
DOROTHY STOKES



*Fourth Row:*

INEZ STEPHENSON  
MARGARET TADLOCK  
GRACE TAYLOR  
SARAH THOMPSON



*Fifth Row:*

HELEN MARIE TUCKER  
RUTH TUCKER  
WAYLAN TUCKER  
HATTIE TURNER



*Sixth Row:*

BESS USRY  
MARGARET VAIL  
JANE VANE  
PAUL WALDROP



*Seventh Row:*

IRIS WALKER  
MARY LOUISE WALLACE  
INGRAM P. WALTERS  
VIRGIL WARD



## SOPHOMORES



*First Row:*  
LUCY WARREN  
MILDRED WATKINS  
SARA ANNA WATKINS



*Second Row:*  
MARJORIE WEBB  
MAYME WEEKS  
GRACE WESTBROOK



*Third Row:*  
AUDREY WHITE  
MARGARET WHITE  
KATHLEEN WHITEHURST



*Fourth Row:*  
DALLIS G. WHITFORD  
MARY HAZEL WHITLEY  
NORMAN WILKERSON



*Fifth Row:*  
EUGENIA WILLIAMS  
MARY FRANCES WILLIAMS  
LOIS WILLIAMS



*Sixth Row:*  
DOROTHY GENEVA WINSTEAD  
LAURA FAY WOOD  
RACHEL WOODARD



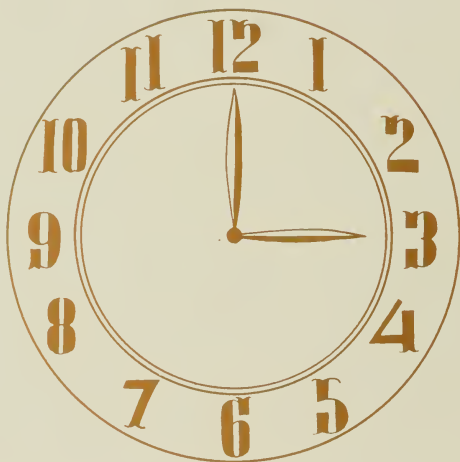
*Seventh Row:*  
MARY MOSS YOUNG  
ARCH C. YOW, JR.

E.C.T.C.



Weaving good time...Jitterbug trip...Ho hum...Sowing straight...Hi Professor...Lazy bones  
 ....Feet first...Check from home...Hey...Glamorous...Delicious...What o mug...Money!  
 ....Pep meeting....

“3 o’clock back



*Officers*

.. to 12 o'clock''



MARGARET RUSSELL  
President

Z. W. FRAZELLE  
Vice-President

JANIE EAKES  
Secretary

CHRISTINE HELLEN  
Treasurer

# FRESHMEN



*First Row:*  
 Edith Mae Alston  
 Ruth Allen  
 Jessly Amano  
 Doris Ambrose  
 John R. Anderson

*Second Row:*  
 Marie Arthur  
 Garlan Bailey  
 Marris Balance  
 Henry Barkley  
 Annie Britton Bartholomew

*Third Row:*  
 Allen Batchlor  
 Rena Bateman  
 Edna Best  
 Helen Blanchard  
 Virginia Lee Bledsoe

*Fourth Row:*  
 Blennie Mae Blne  
 Charlotte Bordenax  
 Doris Boswell  
 Alma Bowen  
 Kathryn Lassiter Boyd

*Fifth Row:*  
 Emma Julie Bridgers  
 Lydia Briggs  
 Janie Lee Jeffreys  
 Fara Rae Britt  
 Virginia Dare Britton

*Sixth Row:*  
 Edward Brown  
 Marjorie Ellen Brown  
 Norma Lyde Brown  
 Rosalie Brown  
 Velnor Merrill Brown

*Seventh Row:*  
 Millison Bryant  
 Elsie Mae Bullock  
 Georgia Bunch  
 Betty Burch  
 William Miller Burks

*Eighth Row:*  
 Virgil Burney  
 Emily Burns  
 Lois Madrid Cain  
 Louise Canady  
 Leon Cannon

E.C.T.C.



# FRESHMEN

*First Row:*

Ella Carawau  
Doris Caisou  
Nell Louise Carter  
Marjorie Carraway  
Verna Carraway



*Second Row:*

Murle Tucker Chapman  
Emma Grace Clark  
Gertrude Clark  
Ruby Phillips Clifton  
Elevanda Yvonne Coker



*Third Row:*

Troy Collins  
Roena Elizabeth Collins  
Sallie Marie Cobb  
Nina Cook  
Jean Cooper



*Fourth Row:*

Frances Copeland  
Willie Copeland  
Garnette Cordle  
Frances Coward  
Lucille Cox



*Fifth Row:*

Olive Crews  
Ora Everette Crisp  
Doris Crosby  
Virginia Cross  
Bonnie Davis



*Sixth Row:*

Doris Davis  
Dorothy G. Davis  
Dorothy Davis  
Freedra Davis  
Eva Kathleen Davis



*Seventh Row:*

Ruth P. Davis  
Annadell Dawson  
Wilma Dean  
Tom Dellinger  
Carolyn Dixon



*Eighth Row:*

Rachel Martin Dixon  
Margie Dudley  
Espy Eakins  
Ellie Mae Eason  
Margaret Eatman



# FRESHMEN



*First Row:*  
Doris Calene Edwards  
Sarah E. Elliott  
George D. Ellis  
Pauline Essey  
Annie Kate Evans



*Second Row:*  
Hazel Gray Evans  
Mary Gene Falkner  
Frances Farrior  
Alice Elizabeth Ferebee  
Eris Day Finch



*Third Row:*  
Marjorie Fitzgerald  
John Hardy Flanagan  
C. T. Fleming, Jr.  
Ella Nell Fletcher  
Frances Haskins



*Fourth Row:*  
Amy Amanda Floyd  
Helen Louise Flynn  
Dorothy Lewis Fox  
Lila Fountain  
Miriam Freeman



*Fifth Row:*  
James Fulfer  
Margaret Futrelle  
Anna Gardner  
Thurla Gaskins  
Melba Jean Gaylor



*Sixth Row:*  
Margaret Gerock  
Mildred Glover  
Lucy Foard Greene  
Thetis Gurganus  
Doris Hackaday



*Seventh Row:*  
Vera Louis Hamilton  
Dorothy Marie Hardee  
Jane Hardee  
Margaret Pugh Harden  
Cardace Julia Harris



*Eighth Row:*  
Rosalyn Harris  
Verda M. Harris  
William Benjamin Harris  
Wilma Harris  
Mary Alice Hastings

E.T.C.

# FRESHMEN

TECOAN

*First Row:*  
 Vera Hastings  
 Mary Hayes  
 Laura Hearne  
 Christine Hellen  
 Iris Elizabeth Herring

*Second Row:*  
 Esther Jane Hines  
 Ruth Hinnant  
 Charlotte Hinson  
 Helen Henson  
 Ruth Hinson

*Third Row:*  
 Anne Holloman  
 Rosalie Holmes  
 Ethel Ruth Hood  
 Nancy Lee Hooker  
 Ophelia Hooks

*Fourth Row:*  
 Helen Loraine House  
 Ruth Hense  
 Ruth Hoyle  
 Charles Hudson  
 Keith Hudson

*Fifth Row:*  
 Carol Leigh Humphries  
 Sarah Frances Hunter  
 Arthur Lee Jackson  
 Mary Elizabeth Jackson  
 Avis Jamerson

*Sixth Row:*  
 Evelyn James  
 Frances James  
 Helen C. James  
 Peggie Nell James  
 Robert James

*Seventh Row:*  
 Janie Lee Jeffreys  
 Mary Emma Jefferson  
 Mary Rebecca Jarvis  
 George Howard Johnson  
 Ida Yolando Johnson

*Eighth Row:*  
 Isla Ruth Johnson  
 Mildred Johnson  
 Blanche Jones  
 Evelyn Jones  
 Hazel Dell Jones



# FRESHMEN



*First Row:*  
 Kathryn Jones  
 Naomi Grey Jones  
 Helen Jordan  
 Bettie Margaret Joyner  
 Doris Keith

*Second Row:*  
 Frances Kemp  
 Mavis Gray Kennedy  
 Mary Edna Kilpatrick  
 Sara Ellen King  
 Elizabeth Kittrell

*Third Row:*  
 Laurin S. Knight  
 Virginia Knowles  
 Linda Lancaster  
 Edna Earle Lang  
 Betty Langdon

*Fourth Row:*  
 Grace Lee  
 Reba Lee  
 Audrey Leggett  
 Ira Osborne Lewis  
 Margaret O. Lewis

*Fifth Row:*  
 Wilma Melvin Lewis  
 Janice Lister  
 W. A. Lovette, Jr.  
 Bill Lucas  
 Evelyn Lyon

*Sixth Row:*  
 Anne Bolyin Mabry  
 Edder Carlton Maddrey  
 Lova Eloise Maddrey  
 Billie Manly  
 Clyde B. Mann

*Seventh Row:*  
 Mamie Marlow  
 Hiram Mayo  
 Nora Mezgis  
 Mildred Misgett  
 Ben Miller

*Eighth Row:*  
 Helen Yvonne Mishoe  
 Jessie Lois Mitchell  
 Clennie Mizelle  
 Jacqueline Moffett  
 Anna Moore



# FRESHMEN

*First Row:*

Alice E. Moore  
Lorraine Morrill Moore  
Alice Esther Morgan  
Rebecca Anne Moye  
Darrell Mumford



*Second Row:*

Gladys Mumford  
Mary Dawson McCarter  
Charles Wesley McFee  
Alene McLamb  
Elwood H. McPherson



*Third Row:*

Annie Nakoneczny  
Frances Newby  
Frank Noble  
Ruby Oden  
Milba Oden



*Fourth Row:*

Bonnie Elizabeth Odum  
Lara Ogburn  
Mary Oliver  
Virginia Osborne  
Grace Byrd Ouestion



*Fifth Row:*

Eloise Owens  
Jean Merritt Owens  
Mary E. Padrick  
Louise Parks  
Sue Parker



*Sixth Row:*

Roselyn Parker  
Cassie Farnell  
Dorothy Pearsall  
Florence Ernestine Peed  
Laura Peele



*Seventh Row:*

Edna Pelt  
Ella Mae Pelt  
Donald Perry  
Rebecca Anne Perry  
Meuzette Peterson



*Eighth Row:*

Frances R. Phelps  
Annie Moore Piner  
Elsie Phillips  
Christine Pleasant  
Mary Ethel Poole



# FRESHMEN



*First Row:*  
 Ila Mae Potter  
 Edna Louise Powell  
 Sara Price  
 Frances Odessa Fryor  
 Aileen Purser

*Second Row:*  
 Maxine Quinn  
 Helen Register  
 Viola Mae Register  
 Sarah Jean Reid  
 Eunice Cornell Ridenhour

*Third Row:*  
 Dorothy E. Rich  
 Thelma Greene Ritter  
 Ruth Evelyn Roach  
 Augusta Frances Robbins  
 William Robins

*Fourth Row:*  
 Grace Jenkins Roberson  
 Frances Roberts  
 Maribelle Robertson  
 Jesse Rollins  
 Alma Earle Rouse

*Fifth Row:*  
 Sally Cathryn Rouse  
 Egbert Rouse  
 Virginia Rouse  
 Marjorie Willis Rowe  
 Katherine Russell

*Sixth Row:*  
 Margaret Russell  
 Mary L. e Sauer  
 Dorothy Sasser  
 Marion C. Sasser  
 Marguerite V. Sawyer

*Seventh Row:*  
 Lois Dale Sessions  
 Cary Poe Shaw  
 Roberts Chadwick Shaw  
 Dorothy Shearin  
 Wilson Shuerholtz

*Eighth Row:*  
 Ray Sisk  
 Merle V. Slater  
 Carley Burch Smith  
 Cornelia Smith  
 Frances Smith

E.T.C.



# FRESHMEN

*First Row:*

Ruby Smith  
 Islamae Spirey  
 Martha Spence  
 Ruth Spencer  
 Eris Stallings



*Second Row:*

Marian Stallings  
 Lyle Reid Starling  
 Annie Audrey Stevenson  
 Betty Jo Stokes  
 Margaret Holland Stokes



*Third Row:*

Rosa Stokes  
 Winifred Stokes  
 Helen Morie Stone  
 Alice Stovall  
 Delia Strickland



*Fourth Row:*

Susie Strickland  
 Evelyn Swindell  
 Geraldine Taylor  
 Patsy Bruton Teal  
 Sue Murray Thomas



*Fifth Row:*

Frances Belle Tunstall  
 Edith Turford  
 Ruby Wanda Tyndall  
 Herschel Tyson  
 Jane Vann



*Sixth Row:*

Linda Vann  
 Anna von Oesen  
 Ernestine Vinson  
 Edith Irene Walker  
 Annie Mae Ward



*Seventh Row:*

Mabel Spence Watson  
 Gretchen Webster  
 Bob Whitehard  
 Frances Whitehard  
 Mildred White



*Eight Row:*

Ruby White  
 Carl Whitehurst  
 Patsy Whitehurst  
 Evelyn Whitfield  
 Dorothy Whitley



TECDAM

# FRESHMEN



*First Row:*  
Mary Elizabeth Whitley  
Clara Elizabeth Williamson  
D. L. Williams



*Second Row:*  
Doris Rouse Williams  
Jean Williams  
Rachael Williams



*Third Row:*  
Marie Williamson  
Hazel Williford  
Bonnie Willis



*Fourth Row:*  
Dorothy Wilson  
Virginia Wilson  
Florence Winslow



*Fifth Row:*  
Ruth Spivey Winslow  
Betty Jones Winstead  
Margaret Hayes Wood



*Sixth Row:*  
Ruby Mae Woodard  
Alvin Wooten  
Virginia Worley



*Seventh Row:*  
Betty Wylie  
Nancy Elizabeth Wynne  
Hazel Yelverton



*Eighth Row:*  
Katherine York



Relaxation...A shorthand class...Off for the week-end...Three in a row...Looking forward...  
Close ups...That tree again...Capture...No partner...In the bush...

# ACTIVITIES

SEPTEMBER

*til*

JUNE

10

9

8

7



12

1



2

3

4

6

5



OFFICERS

JOYCE DUNHAM  
Treasurer

SARA GORHAM  
Secretary

HARRIET MARSHBURN  
Vice-President

DORIS BLALOCK  
President



## WOMEN'S STUDENT

The Women's Student Government Association at East Carolina Teachers College unites the women students as no other organization does. Through unity it endeavors to help each student ad-

just herself to the responsibilities of good citizenship. Student government functions specifically through a council elected by the student body and by the classes. The council this year began its



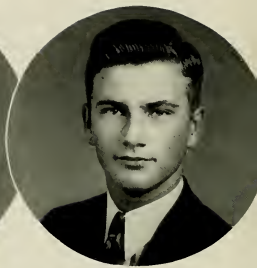
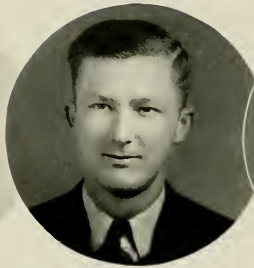
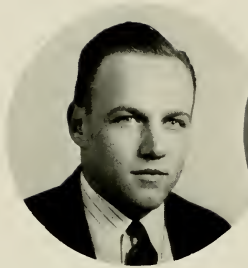


First Row: Emily Murphy, Rebecca Shanks, Mary Grant Bailey, Ruth Britt.  
Second Row: Celia Blanche Dail, Mary Elliot, Myra Godfrey, Shirley Johnson.  
Third Row: Elizabeth Noe, Wilda Royall, Virginia Whitley.

## GOVERNMENT ASSOCIATION

work in the fall by helping with freshman week. Throughout the year it has been the purpose of student government to firmly instill in each member a clear-

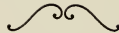
er understanding of the functions of the body and a spirit of loyalty and cooperation.



# MEN'S STUDENT

## OFFICERS

PRES. OF M. S. G. A.....	Walter Rogers
VICE-PRESIDENT.....	Thomas Cox
SECRETARY-TREASURER.....	James Bullock



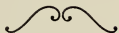
The Men's Student Government Council this year has realized most of its objectives. Working under a new constitution installed by the council last

year, a broader and newer outlook has been carried out through the year.

Due to the larger enrollment of men's students, the Council's work has been

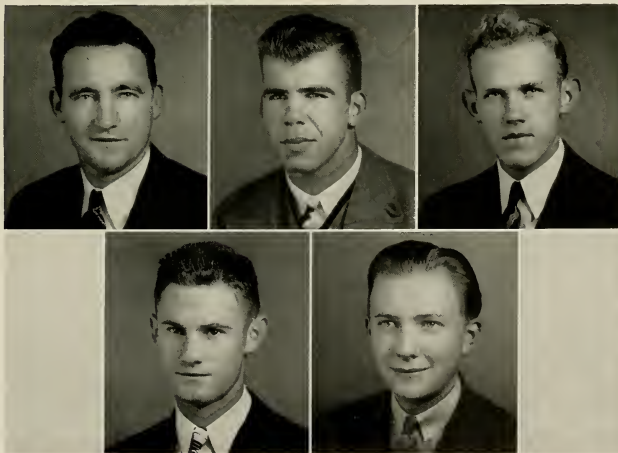
increased and a more intensified program of orientation has been carried out. Full cooperation of the men students made this program highly suc-

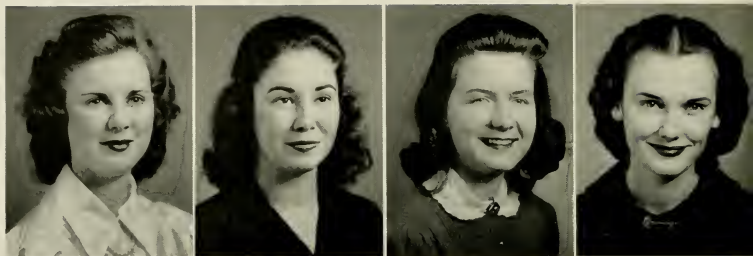
cessful and the ideals of the Men's Student Association of democracy and fairness have been realized to the fullest extent.



## GOVERNMENT ASSOCIATION

First Row. William Merner, William Davidson, Howard Adams  
Second Row. Jessie Gray, Metsel Simmon.





## YOUNG WOMEN'S

REBECCA POSS	.....President
SARA GORHAM	.....Vice-President
CHARLOTTE SHEARIN	.....Secretary
VIRGINIA WHITLEY	.....Treasurer



The Young Women's Christian Association this year has attempted to explore and interpret the true meaning of Christianity and to inspire the girls on the campus to shape their lives more in accordance with its principles. It has offered Christian fellowship through Sunday and Friday evening Vespers, Morning Watch, and by sending delegates to the intercollegiate conferences in the state, by exchanging deputations with Duke, State, and Wake Forest, and by having a Religious Emphasis Week with Dr. Wieman as chief speaker.

The two final services of the college year were the beautiful symbolic programs, "The House of Comradeship" and the candlelight service at Commencement. Two of the most elaborate programs of the year were pageants, one at Christmas and the other at Easter.

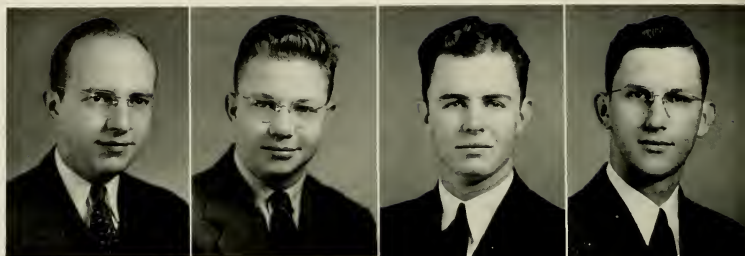
The social affairs of the year have been a party to the Freshmen, buffet dinners, and teas. Knitting for the Red Cross has brought groups together socially.

The president attended the "President School" at Union Theological Seminary, Columbia University, New York, for six weeks last summer, and she and two delegates attended the Blue Ridge Conference.

## CHRISTIAN ASSOCIATION

Committees Young Women's Christian Association: Grace Ross, Rebecca Shanks, Irene Mitcham, Rachel Farnior, Bessie Faye Hunt, Edna Mitchell, Wilda Royall, Erlene Sawyer.





## YOUNG MEN'S

### OFFICERS

President.....	Vernon Kuetemeyer
Vice-President.....	James Whitfield
Secretary.....	Samuel H. Crandell
Treasurer.....	Albert Maness

### FACULTY ADVISORS

Dr. Herbert ReBarker	Mr. J. B. Cummings
----------------------	--------------------



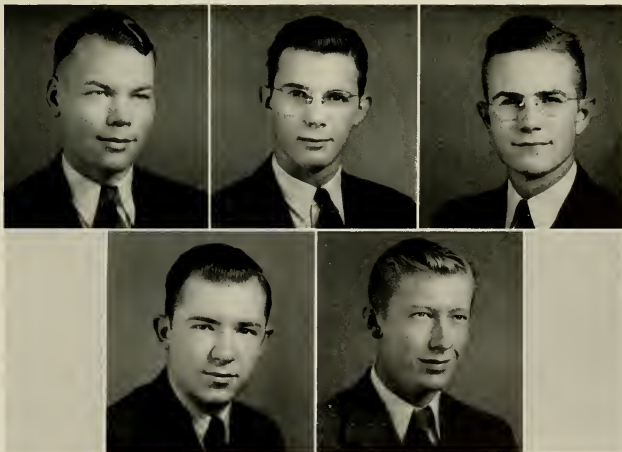
This is the Y.M.C.A.'s second year on the campus. We were organized in the spring of 1939 and have been steadily growing ever since. Our purpose is the realization of a full and creative life through a growing knowledge of God. We have tried to bring this about through vesper services.



Last summer we sent Charles Marks, our chairman of Christian Education to the President's School at Columbia University in New York. We have also taken part in the State "Y" conferences in Raleigh and Durham this year. We entertained all the men students several times at the Campus Building. This has been a successful year for the "Y", and we hope it will be more so next year.

## CHRISTIAN ASSOCIATION

First Row: Jerome Donaldson, Norman Wilkerson, Robert Hollar.  
Second Row: Charles Marks, Harold Taylor





## JUNIOR "Y" CLUB



LYLE REID STARLING  
President

The Freshman "Y" Club is a branch of the Young Woman's Christian Association, and although it is a new organization on our campus, it has tried to fulfill the purpose of its sponsors; "to make for its members a full and creative life through a growing knowledge of God". The Freshman "Y" owes much to Rebecca Ross, president of the Y. W. C. A., who helped organize our club and has done much toward its success. Our organization has charge of morning watch three times a week and has worked for attendance at vesper services. Its chief aims are to help freshman girls be loyal to their religious training and to develop religious leadership.



## SIGMA PHI ALPHA PHI SIGMA CHAPTER

The French Club of East Carolina Teachers College was organized in 1924 under the Greek letters "Phi Sigma", with Professor R. C. Deal, head of the foreign language department, its advisor. The club works with the idea of encouraging the study of French and of fostering and developing a spirit of friendship and scholastic attainment among its members.

In 1939 the organization became the Phi Sigma Chapter of Sigma Pi Alpha, a national honorary fraternity for students of foreign languages.

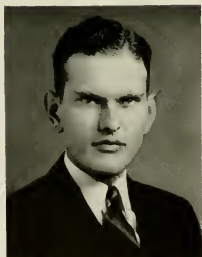
Miss Marguerite Zelle Austin, who came to the department last winter, was this year chosen by the club as co-sponsor with Mr. Deal. The two advisors aided the club in producing a play in French, in formulating plans for a visit to the Charleston Magnolia gardens, and in entertaining alumni at a late winter dance.



PAULINE ABEYOUNIS  
President



## THE JARVIS DEBATING CLUB



JENNINGS BALLAR  
President

The Jarvis Debating Club was organized by a group of students in 1939. Its purpose is to foster interest in debating, and to give training and experience in general forensic work. The aim of the club members is to find enjoyment in this pleasant and extremely practical extra curricula activity. It is hoped that in the future the Club will command the interest of a larger group.



## ENGLISH CLUB

With the supporting interest of its adviser, Dr. Lucile Turner, head of the English department, and of the other members of the department, the English Club has been successful in maintaining a spirit of friendship as well as a desire for high scholastic attainment among the English majors.

The highlight of this year's program was a visitor from Guilford College, Miss Dorothy Gilbert, professor of English, who spoke to the English majors on Emily Dickinson and her works. Interesting personalities of the city, the college, and the student body also furnish the club with entertaining and intellectual programs during the school year.



PAULINE ABEYOUNIS  
President



## ALUMNI DAUGHTERS AND SONS OF E. C. T. C.



FRANCES ROEBUCK  
President

The Alumni Daughters and Sons was organized to promote a closer feeling of friendship among the sons and daughters of the alumni and to preserve the memory of the students of the past.

Miss Mamie E. Jenkins, an authority on the history of the college, is the faculty adviser of the club.

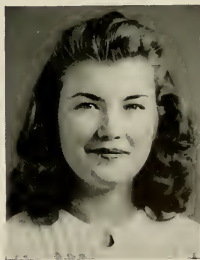




## MATH CLUB

The aim and practice of the Math Club is to learn to appreciate more the wonders and greatness of mathematics and how it has come to be what it is today, as well as to explore the recreational side of life. These aims have been successfully accomplished during the past year mainly through the efforts of our program chairman, Margaret D. Moore, with the help of our advisers, Miss Maria Graham, Miss Louise Williams, and Miss Elizabeth England.

As a background for our study of progress in the field of Mathematics, we have attempted, in recent programs, to acquaint ourselves with the lives and accomplishments of those who are outstanding in its past and present history.



KATHLEEN BARKLEY  
President



## HOME ECONOMICS CLUB

Believing strongly in the supreme worth of the individual, our club proposes to develop personality, leadership, initiative, and poise. Attempting to do this, it is our hope that we may simply "serve our community, our schools, and our families".

The Home Economics Club of East Carolina Teachers College had, as its outstanding activity of the school year, the annual North Carolina Association of Student Clubs over which Agnes Watson, state president and member of local chapter, presided. Also featured on the Club's calendar were: lecture on "Effect of the War on the French home" by Mr. James Fleming of Greenville; participation of club members through class in a Christmas contest sponsored by the Woman's Club; Seasonable reception of Woman's Glee Club; a skit in February by Club member; and hostess to visiting guests of the state department.



EDNA TURNAGE  
President



## THE ASSOCIATION FOR CHILDHOOD EDUCATION

The Student Branch of the Association for Childhood Education at East Carolina Teachers College is a member of the National Association.

"The purpose of this organization shall be to gather and disseminate knowledge of the movement for the education of young children; to bring into active cooperation all childhood education interests, including parent education; to promote the progressive type of education in nursery school, kindergarten and primary grades, and to raise the standard of the professional training for teachers and leaders in this field."

Article 11 A.C.E. constitution.

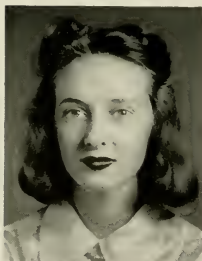
The Student Branch during the past year sponsored an Elementary Education Dinner Meeting to which all Primary and Grammar Majors were invited. Another activity was the editing of a News Bulletin for the North Carolina Branch of the Association for Childhood Education.



ADA ROSE YOW  
President



## THE COMMERCE CLUB



PATRICIA BROOKS  
President

The purpose of the Commerce Club this year, as heretofore, has been to better acquaint the students of the Commerce Department with each other, to foster interest in clerical work and in teaching, and to work together for the mutual benefit of its members and the Commerce Department as a whole.

As its main project this year, the Commerce Club gave a luncheon for the Commerce Alumni. The luncheon was held on Homecoming Day, May 31.

The undertaking was financed by having a bridge tournament, and sponsoring a movie.

The monthly programs of the Club consist of recreational programs, and programs that are informative and helpful to students in their work after graduation.



## ALPHA IOTA SORORITY ZETA DELTA CHAPTER

East Carolina Teachers College and the local Zeta Delta Chapter of Alpha Iota Sorority, International Honorary Business Sorority, take particular pride in the fact that ours is the first teachers college to be granted a charter of membership by Alpha Iota Sorority. Ours is also the first Sorority to be established at East Carolina Teachers College.

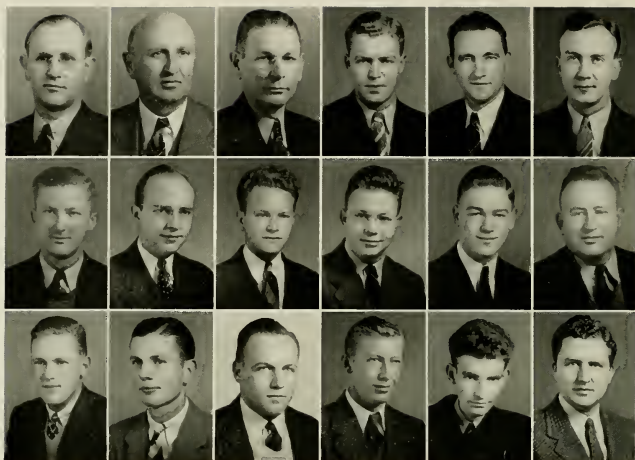
The Zeta Delta Chapter was organized on our campus on March 30, 1940, and twenty-four charter members were initiated and the officers installed in a beautiful, formal, candlelight ceremony. Miss Velma Lowe and Miss Lena Ellis are the sponsors of the Sorority and charter members. Requirements for election to this honorary organization are superior scholarship in commerce, leadership, personality, and character.

Aside from the pledging and initiating of nine new members this year, the active members were guests of the pledges at a party during the Christmas season; it has brought to the College a speaker who returned recently from Europe; and sponsored several programs in which both campus and off-campus speakers participated in discussing national and international affairs. The Sorority sent a group of members to the Mid-Atlantic Conclave held in Washington, D. C., October 18-20. In the spring it brought to the campus specialists in personality development.

MISS VELMA LOWE, *Sponsor.*



BARBARA KEUZENKAMP  
President



First Row: Dr. Flanagan, Dr. Hynes, Dr. ReBarker, Eugene Carson, William Merner, Spencie Hotley  
 Second Row: Tom Cox, Vernon Keutemeyer, Walter Moritz, James Whitfield, Walter Tucker, B. F. Martin  
 Third Row: Robert Burton, Artis Hardee, Walter Rogers, Harold Taylor, John Carson, Judson White

## PHI SIGMA PI

EUGENE CARSON .....	.....President
BILL MERNER .....	.....Vice-President
JOHN CARSON .....	.....Secretary
ARTIS HARDEE .....	.....Treasurer
ORVIL MORTON .....	.....Sergeant-at-Arms

The purpose of the Phi Sigma Pi, national honorary education fraternity, has been the development of personality, character, knowledge and skill in teaching.

There are eighty-two members in the local

group, twenty-two of which are active and sixty of which are alumni or honorary.

At a national convention of the fraternity Eugene Carson and John Carson, E. C. T. C. delegates were the only representatives from south of the Mason and Dixon line.





## FUTURE TEACHERS OF AMERICA

The Robert H. Wright Chapter of Future Teachers of America has completed its second successful year under the guidance of Miss Emma L. Hooper, sponsor of the club, and Miss Frances Wahl, faculty adviser. This year the club is affiliated with both the North Carolina Education Association and the National Education Association.

The aim of our organization has been fully realized in the interesting and entertaining programs sponsored this year. The Chapter was responsible for bringing Dr. Joy Elmer Morgan, Editor of the National Education Association *Journal*, to our campus for two days this spring.



KATHLEEN LEWIS  
President



## COLLEGE BAND



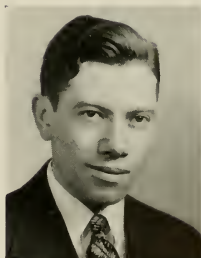
VERNON KUETEMEYER  
President

The East Carolina Teachers College Band, organized during the winter quarter of 1938, is beginning its fourth year of progress. This year will long be remembered as a dark one for the band, for we lost in death our much loved friend and director, Mr. Dean C. Tabor. We are, however, getting back in stride under the capable leadership of Mr. Dittmer and we are looking forward to making next year a truly successful year for the band.



## COLLEGE ORCHESTRA

To play beautiful music artistically requires a rare combination of aesthetic feeling and skill coupled with a dogged perseverance. As the E. C. T. C. Orchestra grows, its members who continue to strive for the beautiful performance of good music become ever more thrilled with the opportunity for the enjoyment of life which such activities afford. They also profit through this activity in becoming keenly sensitive to symphonic music wherever and whenever it is played. It is expected that all of East Carolina will yet feel the influence of orchestral playing through the organization of school orchestras by those now playing in this organization.



A. L. DITTMER  
Director



A. L. DITTMER  
Director

## COLLEGE CHOIR

The college choir was organized to provide opportunity for students to sing and to love some of the beautiful mixed chorus music. Its repertoire has included some of the old polyphonic music of the Sixteenth Century, some modern choral arrangements, and various types between these extremes. As an organization, it has delighted various groups, and will continue to do so as long as it continues to progress as it has begun to.



## WOMEN'S GLEE CLUB

Forty select voices in rich blended tones are proof of the untiring interest with which the Women's Glee Club works to present seasonable performances for the enjoyment of students and faculty in the college and people of the surrounding community.

Each year the organization renders Christmas and Easter programs a cappella and plays an important part in the annual commencement musical recital. Besides the scheduled appearances, the club contributes to chapel programs and lends inspiration to outstanding college events.

Purple choir robes which the members used this year have merited favorable comment from the supporting audience and help to accent the quality of a "finished product".



MISS GUSSIE KUYKENDALL  
Director

# INTERNATIONAL RELATIONS CLUB

The International Relations Club was organized in the Winter of 1940, and brings together those History and Social Science majors who have reached sophomore standing and all others who have twenty-one hours credit in History and Social Science.

Though very young, the club is engaging in many activities in the regular monthly meetings. The main purpose of the club is to learn and understand more fully the international situation.

The club receives at regular intervals books, materials and new current problems for discussion and research from the Carnegie Endowment.

One of the main activities is sending delegates to the Southern International Relations Conference each year.



MAUDE SAWYER  
President





# CHI PI PLAYERS



DAVID BREECE  
President

The Chi-Pi Players were organized in the spring of 1938 to give students practical experience in dramatic interpretation and production, to promote interest in dramatic activity, to develop the creative talent of students and to encourage the reading and witnessing of better plays.

During the year 1940-41 this organization has successfully produced "The Skull" and "Wuthering Heights" and has brought dramatics to a position of respect and appreciation among the students, faculty and alumnae of this college.

East Carolina Teachers College has benefited greatly by the work of the CHI-PI Players in that a complete new stage lighting system has been installed at the expense of the club and much advertisement of the college has been carried out by the productions. Also, the knowledge of dramatic art gained while a member of this organization has been of untold value to students who have entered the teaching profession.





## YOUNG DEMOCRATIC CLUB



DR. HILLDRUP  
Advisor

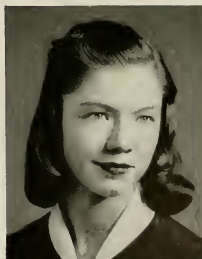
The Young Democratic Club, chartered under the State organization, concluded the year with a paid membership of more than 500. In the annual convention in Raleigh the club became a part of the College District formed at the convention. Mildred Laxton Andrews was named vice-chairman. For the first time in the history of the school East Carolina Teachers College participated in the State Student Legislature. Kenneth Woolard was named President pro-tem. Chriss Humphrey was chairman of the drive on the campus to re-elect President Roosevelt. Last fall the club played host to the college district at a dance, to be made an annual affair. It sponsored a visit of Congressman Herbert Bonner in the Winter Quarter. New officers were installed at a banquet program in the Spring. The club has done much to foster interest in political affairs of the State and Nation, as students are a part of them now and will have a vital interest in them in later life.



## SCIENCE CLUB

The aim and purpose of the Science Club is to inspire science students and to stimulate in them a desire for a deeper, more meaningful study and to challenge them to become more conscious of the scientific world.

Adopting as its project for the year the sponsorship of the College Museum, the Science Club for 1940-41 has gone forward in its work. Through the cooperation of students, faculty, and interested outsiders, actual museum work has been done and many interesting programs presented—programs given by students, by guest speakers, and by showing scientific movies. Through its social meetings the Club has created a sense of fellowship and friendship among its members.



MARY D. HORNE  
President



## PUBLICATIONS BOARD



DORIS BLALOCK  
President

The Publications Board, a little-known committee on the campus, is responsible for the actions of the three college publications—*The Teco Echo*, THE TECOAN, and the *Pieces of Eight*. In addition to this the committee certifies eligibles for offices to the major positions on these publications.

## EDITORIAL STAFF PIECES O' EIGHT

As this is only our second year of publication we think ourselves justified in the improvement which this year's staff has wrought in *Pieces O'Eight*. As most students are aware, the trend in our editorial policy throughout this year has been away from a light humor magazine toward a more literary publication. We feel that we have been successful in presenting the student body with a higher type of publication and hope next year's staff will be equally successful.

## BUSINESS STAFF PIECES O' EIGHT

This year the Business Staff has worn out inches of shoe leather seeking those elusive creatures that are indispensable in financing any publication—ads. The staff is justly proud of the results of this pavement-pounding. It has been through the interest and cooperation of our advertisers and the members of the staff that the magazine has been a financial success. To those advertisers who couldn't say, "No", we express our sincere appreciation. We hope that we have helped them as much as they have helped us. To all others who have helped us in any way, we take this opportunity to express our gratitude.



PATRICIA BROOKS  
Editor



KATHLEEN K. LEWIS  
Business Manager



## BUSINESS STAFF OF TECO ECHO

The policy of the advertising staff of the *Teco Echo* has been to serve the student body and faculty as a source of information, a medium of publicity, and a financing factor of the paper. Due to the cooperation of the student body and people of Greenville the advertising staff willingly attributes whatever success they have made.



JAMES WHITFIELD  
Editor

MARY AGNES DEAL  
Business Manager





# TECO ECHO EDITORIAL STAFF

During the year just ended the *Teco Echo* endeavored to support what it believed to be right and opposed what it thought to be wrong. It held no malice toward any individual or group of the student body and presented the news as it happened. The *Teco Echo* achieved two distinct purposes—producing a newspaper and serving as a laboratory to train journalists. It has upheld the

principles of a free press, one of the last citadels of Democracy. The staff, as interpreters of the ever-changing trend of events in our environment, have endeavored to perpetuate practices that tend to elevate the American way of life. If we have been successful to that end, then our efforts have not been in vain.



# THE 1941 TECOAN

The business staff is justly proud of the amount of advertising it has obtained this year, and is grateful to the firms who have helped to make the publication of the 1941 yearbook a financial success. It wishes to acknowledge the valuable assistance, for both staffs of Herbert Hitch, Charlotte Engraving Co., Charlotte Engraving Co., Charlotte; Frank Fleming, Lassiter Press, Charlotte; and M. F. Dunbar, Dunbar Studio, Charlotte. The staffs also wish to thank all students who have helped us in any way—there have been many.



BETTY KEUZENKAMP  
Editor

LALLAH B. WATTS  
Business Manager





We, the staff of THE TECOAN present this, the 1941 edition of the yearbook of East Carolina Teachers College, to the students. With hopes and fears we give and take. If we have made mistakes, we apologize. If we have pleased you, we are glad.

We wish here to thank Dr. Slay and Mr. Browning, our advisors, who have helped us throughout the year. We also wish to thank the student body for their cooperation.

We wish to express our sincere appreciation to Matt Phillips, staff photographer, who made all our Clock pictures. Also we thank Hampton Noe, who has been helpful in many ways, and Mildred Andrews, snapshot editor, for the many and varied pictures appearing in the snapshot section.

Again we say to all of you, "Thank you".



MRS. C. F. KEUZENKAMP, A. B.

*Sponsor* OF EDITOR 1941 TECOAN

MRS. L. A. WATTS

*Sponsor* OF BUSINESS MANAGER 1941 TECOAN



*The* SOCIETIES





MARY ELIZABETH BEASLEY  
Chief Marshal

# EMERSON SOCIETY

Throughout the school year 1940-41 the Ralph Waldo Emerson Literary Society has sought to instill within the minds and hearts of its members a more thorough understanding and a deeper appreciation for Emerson—the man and the poet.

Evidence of the success of the Emerson society may be recognized by the efficiency with which the annual fall dance was sponsored, the splendid programs given at the regular meetings, the play presented in the winter, and the wholesome attitudes and training received through the association of its members.

## OFFICERS

President..... Jane Williams  
 Treasurer..... Helen Louise Taylor  
 Vice-President..... Nell McCullen  
 Secretary..... Verna Bradley  
 Tecco Echo Rep..... Lydio Piner  
 Tecco Rep..... Eloise Kennedy



JANE WILLIAMS  
President



HELEN LOUISE TAYLOR  
Treasurer



NELL McCULLEN  
Vice-President



VERNA BRADLEY  
Secretary



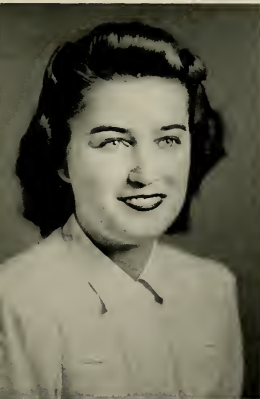
DORIS BRITT



NANCY DARDEN



IRENE MITCHAM



JANE WILLIAMS



RUTH BRITT

## MARSHALS

# POE LITERARY SOCIETY

The Poe Society has carried on its work well during this year and has done much to revive the old Poe spirit. The year began with a successful tea dance in the Wright Building for the Freshman Class.

The presentation of the one act tragedy "Mansions" was one of the greatest events of the year.

The Mid-winter dance sponsored by the Poe Society was carried out in a spirit of frivolity and pleasing originality. The Poes are planning to sponsor many more successful activities in the future.

## OFFICERS

President.....Hazel Owens  
 Vice-President.....James Whitfield  
 Secretary.....Christine Tripp  
 Treasurer.....Nancy Burden



HAZEL OWENS



JAMES WHITFIELD



CHRISTINE TRIPP



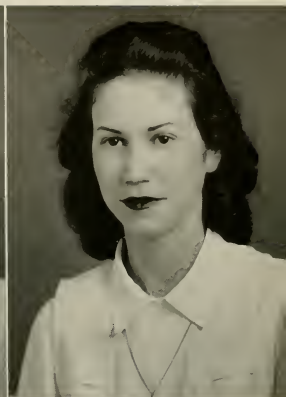
NANCY BURDEN



NANCY BURDEN



ROSELIND GAYLORD



ANNE GOOLSBY



HAZEL STARNES



VIRGIL WARD

## MARSHALS

# LANIER SOCIETY

The worthy purpose for which Sidney Lanier himself lived are the ideals ever before the loyal members of the Lanier Society.

The highlights of our year have been: An informal tea dance which was sponsored by the three societies to welcome the freshman and the intersociety one act play contest in which our talent was well organized.

The Spring dance sponsored by the Lanier Society was marked by gaiety and originality.

## MARSHALS

- President.....Ellen McIntyre
- Vice-President.....Marion Smith
- Secretary.....Edith Harris
- Treasurer.....Adelaide Reid

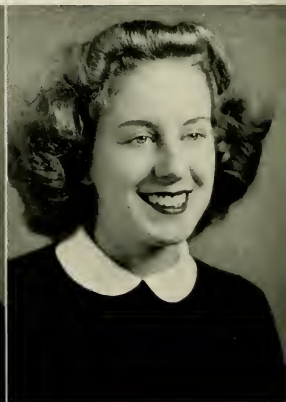
ELLEN MCINTYRE



MARION SMITH

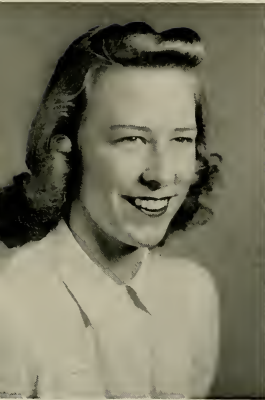


EDITH HARRIS



ADELAIDE REID





JESSIE KEITH



ELLEN McINTYRE



AGNES WATSON



LORAINÉ PRITCHARD



MILDRED LIVERMAN

## MARSHALS

# ATHLETICS

SEPTEMBER

*til*

JUNE

10

9

8

7



12

1



2

3

4

6

5



Music goes round and round...What's the matter? ...On the bar...just strollin'.  
 No escape for a uniform...Whow!...  
 Thirsty?...Heads 'ar.... ....???...Bong, bang....Deep in thought....





We won't be home until mornin'....Oh, Johnny!....Mo' lassies....Between classes....  
Roll out the barrel....Sisterly love....And four to go....  
Happy trio...In ambush...On the trail...Three ittie fishes beside the ittie bittie pool



## *The* VARSITY CLUB

The Varsity Club draws its members from lettermen in the various sports on the campus: football, basketball, baseball, and tennis. The Varsity Club this year has been striving toward harmony and cooperation among athletes.

The Varsity Club play and dance, and a

"Lil Abner" skit presented at the Pitt Theater were some of the major undertakings of the club. In conjunction with the W. A. A., the Varsity Club has attempted to sponsor recreation on the campus by keeping the Wright Building open on Sundays.



# FOOTBALL SQUAD

Back in the fall of 1940 rumors began circulating from the Pirate Camp that the Teachers at last had something to be proud of in the way of a football team. As an inspired team—managed by a new coach and full of new player's blood—went from one victory to another, the student body began to really take an interest in their team.

The 1940 edition of the Pirate football squad made one of the finest records that an E. C. T. C. grid team has ever established. Their "wins" greatly outnumbered their "losses" and their accomplishments on the gridiron promise to lead the way in a Renaissance movement in athletics here at East Carolina Teachers College.

## FOOTBALL COACH

"Coach John", as John Chisenbury is affectionately called by the fellows who play on his teams, began this, his first year on our campus, by coaching the most successful football team that East Carolina Teachers College has produced in years. He guided the team from victory to victory and gave basis for the hope that the Pirates will someday produce football teams that can carry the banner of accomplishment as high as do our other athletic teams.



# FOOTBALL SQUAD



CHUCK McFEE

BILL DAVIDSON

BOB YOUNG

ROCKERFELLOW VENTERS

WILSON SCHUERHOLTZ

RUSSELL ROGERSON

WALTER ROGERS

DAN WADDELL



BILLY GREEN

JACK YOUNG

IRVING POLIAKOFF

HOWARD ROBINSON



EDWARD EVANS  
JIMMY GIANOKAS  
BRUCE MURRAY



GEORGE ROBERTS  
JOE WILLIAMS  
BILL LUCAS



## BASKETBALL

A brilliant, fast, offensive court game was the outstanding feature of the 1941 edition of the Pirate cager's victory march. Converting a successful football

squad into an outstanding basketball team proved little trouble to Coach Chrisenbury and his boys romped through conference competition with

few losses and few close games. Usually E. C. T. C. gained an early lead and finished far ahead of their adversaries.

The '41 Pirate quint upheld E. C. T. C.'s

reputation of being a stiff opponent on the hardwood court and set quite a high mark in the record book for future teams to shoot at.



# BASEBALL

Directed by coach Gordan Gilbert the 1940 Pirate "Gashouse gang" made an enviable record on the baseball diamond. Defeated rarely, and displaying a hard fighting spirit coupled with a perfect example of cooperation, the spunky Pirate club emerged victori-

ous in most of their conference trials. A hard-hitting and dependable fielding outfit proved too much for weaker adversaries and when the last "out" was made E. C. T. C. found herself with a team of whose record she could be justly proud.

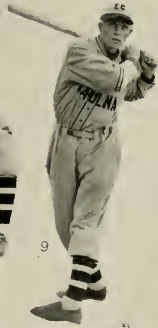
## GORDAN GILBERT (Baseball Coach)

Coach Gordan Gilbert was greatly responsible for the outstanding record left by the 1940 Pirate Baseball Club. His untiring efforts and capable management of the team members will long be remembered as out-

standing factors in a successful season. A good coach should be a combination of a teacher, a diplomat, and a natural-born leader,—Gordan Gilbert was all of these.









Under the guidanceship of Miss McElwain the W.A.A. has sponsored many events on the campus. The outstanding event was the dance (seen above). Snow floated down on the dancers like never before.

Come with us swimming, bicycling or what not. You will always be guaranteed a wonderful time.

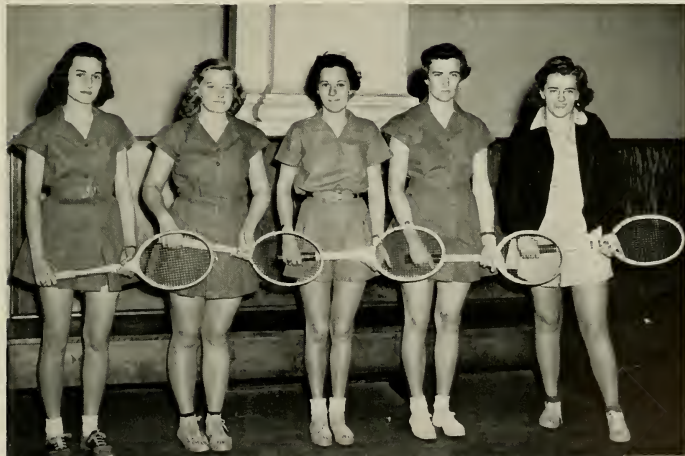


HELEN MCELWAIN

# TENNIS

Tennis is officially a major spring sport yet it continues for almost the entire school year. The season is climaxed by the participation of girls playing and

elimination tournament. These tournaments challenge the ability of as many girls as wish to come out. Pictured are the top ranking players who make up the tennis varsity.





## WOMEN'S ATHLETIC ASSOCIATION



FILEEN TOMLINSON  
President

MYRTLE HOPKINS  
Vice-President

MAYBELLE POLLOCK  
Secretary

ESTELLE EDWARDS  
Treasurer

The Women's Athletic Association was organized in 1912 and since that time it has been one of the most active organizations on the campus. Regular monthly meetings are held to discuss the athletic activities on campus and provides a social hour for its members.

This organization struggled unsuccessfully until the past few years when it became an active and enthusiastic group under the direction of Miss Helen McElwain.

The Physical Education Department has cooperated with the Association to sponsor various athletic activities.



In order to give more students a better chance to become proficient in a greater variety of sports, it has been the aim of the Association to promote an intramural program, introducing a new point system. This program includes field hockey, soccer, volley ball, basketball, softball, tennis, bicycling, hiking, archery, table tennis, croquet, horseshoe, badminton, shuffleboard, and darts.

Points are awarded for participation in these activities and awards consist of a medal for 500 points, letter for 1000 points, sweater for 1500 points, and a statue trophy for 2000 points.

It is the chief objective of such a program to create among the students a sense of fair play, loyalty, sacrifice, respect, cooperation, and sportsmanship.

Already the results have been a realization of a greater feeling of unity within the student body as a whole.

# HEADS OF



ESTHER PARKER  
Head of Volley Ball



EDITH DALRYMPLE  
Head of Tennis



MARGARET WOOD  
Head of Soccer



DORIS ROBERTS  
Head of Softball



NICK PROCTOR  
Head of Basketball

The Women's Athletic Association Cabinet is made up of the Association advisor, Miss McElwain, Association officers, and Heads of Sports. It is the official body of the Association. But the success and spirit of our Association depends as much upon the individual member as it does upon the cabinet members.

## SOFTBALL

In the spring at college as well as in the cities our minds turn to softball. More enthusiasm than ever before has been shown this spring by the number of participants out. The seasonal practices were brought to a close by a tournament held between the classes and by the selection of an honorary varsity—some of its members being shown here.



# DEPARTMENTS



LOUISE LINDSAY  
Head of Individual Sports



ELIZABETH BURNS  
Head of Hiking



RACHEL BLANCHARD  
Head of Hockey



MARGARET WHITE  
Head of Archery



CAMILLE GASKINS  
Head of Bicycles





RUTH HALL



MARY FRANCES WILLIAMS



AUDREY STANLEY



PEARL HOUSE

## ALL-STAR INTRAMURALS

### BASKETBALL

The basketball teams had a most successful season under the guidance of coach McElwain and manager Nick Proctor. Approximately one hundred fifty girls participated this year. The highlight of the season was the game played by the honorary varsities pictured here.



### SOCCER

Soccer, a popular fall sport meeting three times a week attracted over forty girls this year, thus proving how worthwhile it is. These girls can really kick that ball and some of the roommates are usually glad when the sport is over. The senior-freshman team won the final tournament by defeating the junior-sophomore team. At the end of the tournament a varsity team was chosen, the team being shown here.





## VOLLEY BALL

Intramural and interclass volley ball furnished an interesting fall sport for one hundred girls. During this season there is instruction for beginning, intermediate, and advanced groups. After the practices are completed, a Round Robin Tournament is held.



## FIELD HOCKEY

Field Hockey is a major sport of the fall season. Practices are held three times a week, and this year approximately fifty girls participated in the sport. And believe it or not—they really had fun in spite of the knocks and falls. The junior-sophomore team won the final tournament by defeating the senior-freshman team. Those chosen for honorary varsity from the four class teams are pictured here.

# FEATURES

This year the TECOAN staff has tried to be fair and impartial with all in the choice of the Features. We like you, wanted to put all sixteen in the section but space would not permit. Each class elected four candidates. Each candidate had a picture made and turned them in to us. The Honorable F. C. Harding then received the pictures without any names on them. He tried to be fair with all, and the following are the Eight Features he picked.

## SEPTEMBER

*til*

## JUNE

10

9

8

7



12

1



2

3

4

6

5





DOROTHY REED MILLER, MAY QUEEN OF 1940







HAZEL OWENS

HELEN BROWN JEFFERSON





KATE BRYAN PARKER

FRANCES SUTHERLAND





RUTH TUCKER



ESTELLE DAVIS





LYLE RIED STARLING

MARGIE DUDLEY





"THE SKULL"

# ADVERTISEMENTS

THE  
COLLEGE  
STATIONERY STORE  
AND  
SODA SHOP

CONGRATULATE SENIORS

EAST CAROLINA'S  
FINEST AND MOST  
COMPLETE DEPARTMENT  
STORE



BLOUNT-HARVEY

CLASS OF 1941

*Congratulations*

Belk-Tyler takes this opportunity to  
congratulate the graduates and  
teachers of E. C. T. C. We are proud  
of you. Success to all!

BELK-TYLER COMPANY  
"Eastern Carolina's Shopping  
Center"

Greenville, North Carolina

Drink

in Bottles

*Congratulations to*

Seniors of 1941

GREENVILLE  
CHAMBER OF COMMERCE



You are always welcome to the store  
that carries the Juniors' and Wom-  
an's smart apparel.

**WILLIAMS**

*The Ladies Store*

Greenville, N. C.

**BEST JEWELRY COMPANY**

*"Eastern Carolina's Leading Jeweler"*

Established 1901

**QUALITY • VALUE • SERVICE**

*"YOUR JEWELERS"*

The Best Candy You Can Buy  
**GREENVILLE WHOLESALE  
CANDY CO.**

706 Dickinson Avenue

**PHOTOGRAPHS**

**Baker's Studio**

Greenville, N. C.

**ALL WORK GUARANTEED**

*Compliments of*

**KARES BROS.**

Restaurant, Soda and News Service

*"We Serve the Best"*

**HOME FURNITURE STORE**

Complete line of  
Home Furnishings

J. A. Collins  
Manager

701 Dickinson Ave.  
Greenville, N. C.

**Congratulations and Best  
Wishes From**



427 Evans Street

**"Greenville's Finest Drug Store"**

*Compliments*

**WHITES STORE, INC.**

Greenville, N. C.  
Washington, N. C.  
Windsor, N. C.  
Ahoskie, N. C.  
Scotland Neck, N. C.  
Mount Olive, N. C.

C. H. EDWARDS HARDWARE  
HOUSE

"Where Quality Tells"

A Complete Line of Hardware,  
Points, and Sporting Goods

Dial 2418

Ninth at Dickinson Avenue  
Greenville, North Carolina

PEOPLES BAKERY

●  
PATRONIZE THE  
COLLEGE "Y"  
STORE

*Compliments of*

RICK'S TOURS

*Compliments of*  
ORMOND WHOLESALE  
COMPANY

Join the Swing to

***Pepsi-Cola***

Bigger & Better 5c

Use Genuine I.E.S. Lamps for Better  
Light and Better Sight

WATER AND LIGHT  
COMMISSION

*Compliments of*

J. B. KITTRELL

Greenville, N. C.

*Compliments of*

Bell's Coal and Wood Yard

Greenville, N. C.

RELAX—AND ENJOY  
NEHI ORANGE  
ROYAL CROWN COLA

Best by Taste—Test

ROUSE PRINTERY

Office Supplies, Stationery,  
Printing, Engraving

You will make no mistake letting us fill your  
prescription . . . neither will we.

J. KEY BROWN, DRUGGIST

The Rexall Store

Dial 3319 — Five Points

# EAST CAROLINA TEACHERS COLLEGE

GREENVILLE, N. C.

## Has membership in and is fully accredited by:

The Southern Association of Colleges and Secondary Schools  
The American Association of Teachers Colleges  
The North Carolina College Conference

## Has the following departments of instruction:

Administration and Supervision	Art Education
Commerce	Education
English	Foreign Language
Geography	History
Home Economics	Library Science
Mathematics	Music
Physical Education	Psychology
Science	Social Science

## Has curricula for the preparation of teachers in:

1. Primary grades (1 to 3 inclusive)
2. Grammar grades (4 to 7 inclusive)
3. High School (8 to 12 inclusive)

## The degrees offered are:

1. Bachelor of Arts—requiring four years of study on a well-organized curriculum that meets the requirements for a specific teachers' certificate in North Carolina.
2. Master of Arts—requiring at least one standard year of study on a curriculum organized on the basis of the student's educational preparation and in line with his intellectual interests.

The demand for well-trained and highly skillful teachers was never greater than at the present time.

The standards of instruction here are high and they are being made higher each year. Weak students are not solicited.

Special courses are offered for the purpose of preparing candidates for the principal's and the superintendent's certificates in North Carolina.

The summer quarter is a standard session and the equivalent, in instruction and credit that may be earned, to a quarter in the regular college year.

## For further information, address

LEON R. MEADOWS, President

HOWARD J. MCGINNIS, Registrar

When Better Automobiles are Built,  
Buick Will Build Them  
FOLGER BUICK CO., Inc.

Compliments of  
WYATT BROWN'S  
CASCADE LAUNDRY

LOWE'S DRESS SHOP  
Greenville, N. C.

BOWL  
At Greenville Health Center  
"Where Bowling is Pleasant"

CARTER'S PRINTERY  
Dial 3226  
417 Cotanche St.

GREENVILLE FLORAL  
COMPANY  
Telephone 2827  
315 Cotanche Street

U. S. C. Coach—Com'on, you guys—get going! You're playing like a bunch of amateurs.

—*Pelican*

At two o'clock in the morning one of the guests awoke his companion.

"Change places with me, Dick," he groaned. "It's my time to be on the feather."

—*Texas Ranger*

"Darling, would you like to marry a man with one eye?"

"Certainly not."

"Then let me have the umbrella."

—*Ranger*

"When did you first suspect your date was not all right mentally?"

"When he shook the hall tree and began feeling around on the floor for apples."

—*Sundial*

A wondrous smile was Ann McCarter's  
She wore a grin upon her face  
And mouse-traps on her garters.

"What kind of dress did Betty wear to the party last night?"

"I don't know: I think it was checked."

"Boy, that must have been some party!"

—*Skipper*

Student: "What's that you wrote on my paper?"

Prof.: "I told you to write plainly."

—*Drexel*

Judge: "You admit you drove over this man with a loaded truck?"

Driver: "Yes, your honor."

Judge: "And what have you to say in your defense?"

Driver: "I didn't know it was loaded."

"I shall put you fellows in this room," said the host. "You'll have a comfortable night, for it has a feather bed."

DUNBAR STUDIO

*Fine Portraits*

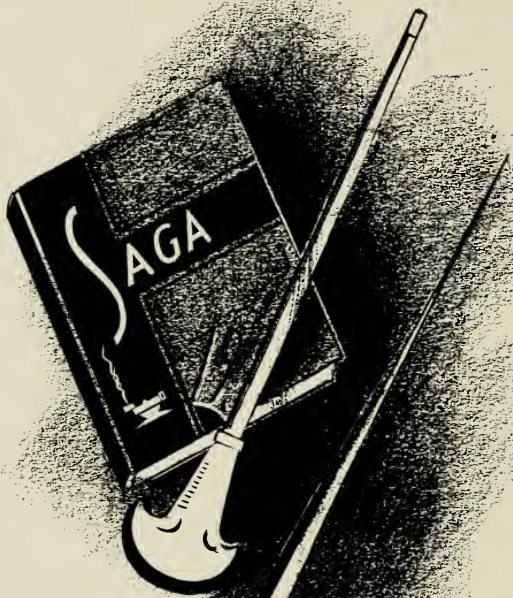
228½ N. Tryon Street

Charlotte, N. C.

OFFICIAL PHOTOGRAPHERS

FOR

The 1941 TECOAN



**CHARLOTTE ENGRAVING CO.**

*School Annual Engravers*

Charlotte, North Carolina



# ***School Publications***



The many high awards won each year by school publications produced by us is the result of many years' specialization based on a comprehensive knowledge of art motifs, design, layout and publication trends.

A modern printing plant, operated by highly efficient craftsmen in every department, provides a quality and distinctiveness that is unsurpassed.



**The LASSITER PRESS, Inc.**

CHARLOTTE, NORTH CAROLINA

PRINTERS OF THE 1941 TECOAN















JOYNER  
30372 0104 0230 0



GEMCO



THE CASHE  
PUBLISHERS  
NEW YORK