



The
TECOAN
1940

Bessie Jay Hunt
May 29, 1940



1940
TECOAN

P R E S E N T I N G

The
TECOAN
of
1940



Copyright
Editor..... HARVEY DEAL
Business Manager..... PRUE NEWBY
PUBLISHED BY THE STUDENT BODY OF
EAST CAROLINA TEACHERS COLLEGE
GREENVILLE, N. C.

F O R E W O R D



The little clay figures which grace the pages of this volume are harmless creatures—dug from the ground and mashed into crude shape. If, by this very crudity, which resolves itself into caricature, we have hurt anyone's feelings, we did not intend it. We present them as whatever you wish—symbols, dolls, caricatures—take them as you like. Life is fun.



C O N T E N T S

THE COLLEGE
CLASSES
ACTIVITIES
ATHLETICS
FEATURES

DEDICATION

To Mr. Dean Tabor, teacher
and friend, we, the students of
East Carolina Teachers College,
affectionately dedicate the 1940
edition of the TECOAN.



The COLLEGE





AUSTIN BUILDING
AND
VIEW FROM ENTRANCE





EAST OF AUSTIN
ADMINISTRATION
BUILDING



THE DAVIS ARBORETUM



BACK CAMPUS VIEW



THE LIBRARY



THE WRIGHT BUILDING



LIBRARY INTERIOR



WRIGHT BUILDING LOBBY



DR. LEON R. MEADOWS
President

You are leaving College at a critical period in the world's history; but if conditions are bad, your opportunities are equally as great. Few people possess the power, the ability to alter the situation as do you. There is a conflict between democratic and autocratic ideals. Enter this conflict; choose wisely from the values at your disposal; set standards that are high; encourage group thinking and group leadership as opposed to dictatorship. Only in this way can the people continue to control and operate their social and economic plans.

May the future hold for you happiness and success.

LEON R. MEADOWS



MISS ANNIE L. MORTON

Nail to the masthead of your life the motto of your State, "To be rather than to seem to be," and you will find yourself far along the road to happiness and success.

DR. HERBERT REBARKER

Successful life cannot be expressed in terms of amusement, wealth, notoriety, popularity, or even goodness. To unselfishly love, labor with, and serve mankind lifts one out of the commonplace into the realm of complete and abundant living. The profession of teaching capitalizes the possibilities of life.



FACULTY



Laura Rose

Top Row: DR. L. R. MEADOWS, Director of Instruction, English; DR. LUCILLE TURNER, English; DR. DENVER BAUGHAN, English; MISS MARY GREENE, English; MISS LOIS GRIGSBY, English.

Middle Row: MISS EMMA L. HOOPER, English; MISS MAMIE JENKINS, English; DR. M. N. POSEY, English; MR. R. C. DEAL, Director of Instruction, French; MISS MARGUERITE AUSTIN, French.

Bottom Row: DR. A. D. FRANK, Director of Instruction, History; MISS LAURA ROSE, History; DR. R. L. HILLDRUP, History; MR. E. C. HOLLAR, History; MR. O. A. HANKNER, Director of Instruction, Physical Education.

FACULTY



Top Row: MR. GORDON GILBERT, Physical Education; MR. BOLEY FARLEY, Physical Education; MISS HELEN MCELWAIN, Physical Education; MR. DEAN C. TABOR, Director of Instruction, Music Education; MISS GUSSIE KUYKENDALL, Music Education.

Middle Row: MR. A. L. DITTMER, Music Education; MISS LOIS V. GORRELL, Music Education; DR. R. J. SLAY, Director of Instruction, Science; DR. CHARLES REYNOLDS, Science; DR. R. C. BRANDT, Science.

Bottom Row: DR. HELEN SPANGLER, Science; MISS MARY CAUGHEY, Science; DR. DANIEL STULL, Science; MRS. ADELAIDE BLOXTON, Home Economics; MISS RUBY SHOLTZ, Home Economics.

FACULTY



Top Row: MISS EVELYN ROGERS, *Home Economics*; MR. PARNELLE PICKLESIMER, *Director of Instruction, Geography*; MR. J. B. CUMMINGS, *Geography*; DR. BROWN, *Geography*; MISS KATE LEWIS, *Director of Instruction, Art*.

Middle Row: MISS ALMA SPARGER, *Art*; MR. ELMER BROWNING, *Director of Instruction, Commerce*; MISS LENA C. ELLIS, *Commerce*; MISS VELMA LOWE, *Commerce*; MISS MIRIAM MOHL, *Commerce*.

Bottom Row: MR. M. L. WRIGHT, *Sociology*; DR. BEECHER FLANAGAN, *Economics*; DR. PAUL TOLL, *Economics*; DR. E. L. HENDERSON, *Director of Instruction, Administration and Supervision*; DR. CARL L. ADAMS, *Director of Instruction, Psychology*.

FACULTY



Top Row: MISS ANNIE NEWELL, *Education*; MISS LUCILLE CHARLTON, *Education*; DR. HUBERT C. HAYNES, *Education and Psychology*; MISS DORA COATES, *Director of Supervision, Primary and Grammar Grades*; DR. HERBERT REBARKER, *Director of Instruction, Mathematics*.

Middle Row: MISS LOUISE WILLIAMS, *Mathematics*; MISS ELIZABETH ENGLAND, *Mathematics*; MR. WILLIAM MCHENRY, *Industrial Arts*; MR. VESTER MULHOLLAND, *Principal Senior High School, English*; MISS DEANIE BOONE HASKETT, *Critic Teacher, English*.

Bottom Row: MR. R. G. WALSER, *Critic Teacher, English*; MR. ELMER ROBINSON, *Critic Teacher, Science*; MISS LACY, *Critic Teacher, Home Economics*; MISS IMOGENE RIDDICK, *Critic Teacher, French*; MR. HERMAN DALLY, *Critic Teacher, History*.

FACULTY



Top Row: MISS LAURA BELL, Critic Teacher, Commerce; MISS FRANCES WAHL, Principal, Training School; MISS ANNE REDWINE, First Grade; MISS RUTH FAISON, First Grade; MISS CHRISTINE JOHNSON, Second Grade.

Middle Row: MISS LUCY NULTON, Second Grade; MRS. LINDSAY SAVAGE, Third Grade; MISS EUNICE MCGEE, Third Grade; MISS ALMA BROWNING, Fourth Grade; MISS LOUISE GALPHIN, Fourth Grade.

Bottom Row: MISS CLEO RAINWATER, Fifth Grade; MISS COBB, Sixth Grade; MISS HYMAN, Sixth Grade; MISS KATHLEEN PLUMB, Seventh Grade; MR. J. L. DUNCAN, College Treasurer.

FACULTY



Top Row: MRS. OWENS, *Treasurer's Assistant*; MR. RUFUS JOHNSON, *Treasurer's Assistant*; MISS HAZEL WILLIS, *Secretary*; MISS OLA ROSS, *Assistant Registrar*; MISS STELLA GROGAN, *Superintendent of the Infirmary*.

Middle Row: MISS MARY LEA SMITH, *Assistant Superintendent of the Infirmary*; MR. S. R. GULLEDGE, *Librarian*; MISS MARGARET SAMMON, *Assistant Librarian*; MISS RUTH WHITE, *Dormitory Matron*; MISS MARY CHEATHAM, *Dormitory Matron*.

Bottom Row: MISS ELIZABETH SMITH, *Assistant Dean of Women*; MISS ARLIE V. MOORE, *Supervisor of Buildings*; MRS. AGNES BARRETT, *Secretary to the President*; MRS. L. L. REEVES, *Stewardess to Dining Hall*.

The CLASSES



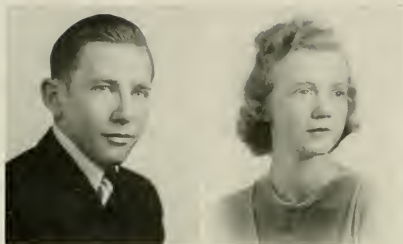


SENIORS



CLIFTON BRITTON *President*
NELL BREEDLOVE *Vice-President*
MARIE TRIPP *Secretary*
JOHN DAVID BRIDGERS *Treasurer*

SENIORS



JULIUS ABERNETHY, JR.

Nashville, N. C.

Mathematics and Commerce

Class Treasurer 1; M.S.G.A. 2; Mathematics Club 1, 2, 3, 4; Vice-President 4; Commerce Club 2, 3, 4; Treasurer 1; Speech Choir 3, 4.

EVELYN AIKEN

Snow Hill, N. C.

Home Economics and Science

Junior "Y" Cabinet, President 1; Class Representative TIGUAN 1; Y.W.C.A. 1, 2, 3, 4; Poe Society 1, 2, 3, 4; Science Club 3, 4; Home Economics 3, 4.



MARGARET MARIA ALLEN

Franklinton, N. C.

History and Mathematics

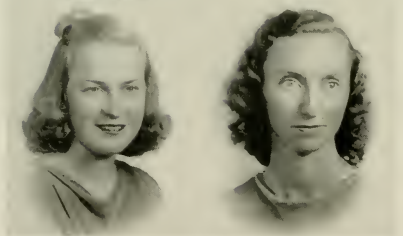
Mathematics Club 2, 3, 4; Y.W.C.A. 2.

MARION ALLEN

Creedmoor, N. C.

Grammar Grade Education

Y.W.C.A. 1; Emerson Society 1, 2, 3, 4; Methodist Student Association 1, 2, 3, 4; Cabinet 1, 2, 3, 4; Delegate to Methodist Conference 1; Granville Country Club 1, 2, 3, 4.



ALICE ALLGOOD

Fayetteville, N. C.

Grammar Grade Education

Poe Society 1, 2, 3, 4; Ki Pi Players 2, 3, 4; Sophomore Play 2; Junior Play 3; Dramatic Club Play 3; W.A.A. 1; Y.W.C.A. 1; Glee Club 1, 2; F.T.A. 3, 4; Senior Play 4.

VILEIGH AUSTIN

Willow Springs, N. C.

Mathematics and French

Mathematics Club 1, 2, 3, 4; Phi Sigma 1, 2; W.A.A. 1, 2, 3, 4; Basketball Varsity 1, 2; Head of Volley Ball 4; Technical Staff, Senior Play 4.

1940

E.C.T.C.

EVELYN BAKER
 Washington, N. C.
Commerce
 Commerce Club 1; Y.W.C.A. 1; Poe Society 1, 4.

RACHEL LOUISE BARBEE
 Nashville, N. C.
Primary Education
 Y.W.C.A. 1, 2, 3, 4; Lanier Society 1, 2, 3, 4;
 W.A.A. 1, 2; Basketball Team 1, 2.

MILDRED BARNES
 Severn, N. C.
Primary Education
 Poe Society 1, 2, 3, 4; A.C.E. 1; Y.W.C.A. 1, 2, 3,
 4; Vice-President Northampton Club 2.

LUCY ANN BARROW
 LaGrange, N. C.
English and History
 S.G.A. 1; Y.W.C.A. 2, 3, 4; Cabinet 3, 4; Delegate
 to "Y" Conference at Blue Ridge 3; English Club
 2, 3, 4; History Club 2, 3, 4; Dramatics Club 3, 4;
 Verse Speaking Choir 3; Junior Play 3; Trecoan
 Staff 4; Senior Play 4.

SAM BASS
 Black Creek, N. C.
Social Science and Mathematics
 Atlantic Christian College 1, 2, 3; Glee Club 1, 2,
 3, 4; Male Chorus 1, 2, 3, 4; Male Quartet 1, 2, 3;
 Kappa Alpha Fraternity 2, 3; Social Science Club
 4; Mathematics Club 4.

BIRTRUM BATEMAN
 Greenville, N. C.
Mathematics and Science
 Phi Sigma Pi 3, 4; College Band 2, 3, 4.



TECOAN

SENIORS



MARIE BAYSDEN
Richlands, N. C.

Home Economics and Science
Home Economics Club 2, 3, 4, Vice-President 4.



ANNIE LAURIE BEALE
Pendleton, N. C.

Commerce and History
Y.W.C.A. 1, 2, 3, 4; Junior "Y" Cabinet 1; Methodist Student Association Council 2, 3, 4, Treasurer 2, Chairman of Program Committee 3; President 4; Secretary Northampton Club 2; KJ P Players 2, 3, 4, Second Vice-President 4; Stage Manager Class Plays 2, 3; Stage Manager Senior Plays 2, 3; W.S.G.A. 4; *Who's Who in American Universities and Colleges* 4; Commerce Club 1, 2, 3, 4, President 3; Vice-President State Methodist Student Conference 4; Hall Proctor 3; Delegate to National Methodist Student Leadership Conference 3; Zeta Delta Chapter of Alpha Iota Sorority 4.



LUCILLE BELL
Rocky Mount, N. C.
Grammar Grade Education



TOMPY BENTON
Indian Trail, N. C.
Home Economics and Science
Senior Play 4.



JOSEPH D. BIGGS
Washington, N. C.
History and Science
Y.M.C.A. 4, Cabinet 4; Science Club 3, 4; History Club 4; Glee Club 2.



BETTIE B. BLANCHARD
Wallace, N. C.
Primary Education
Y.W.C.A. 1, 2, 3; W.A.A. 1, 2; Poe Society 1, 2; W.S.G.A. 3, 4; House President 3, 4.

1940

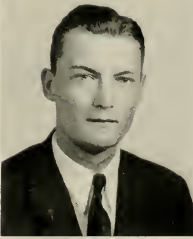
E. C. C.

DORIS ANN BLANCHARD
Sunbury, N. C.
Grammar Grade Education
Poe Society 1, 2, 3, 4; W.A.A. 4.



RACHEL BLANCHARD
Greenville, N. C.
Physical Education
W.A.A. 1, 2, 4.

ELMER BLAND
Bethel, N. C.
History and Physical Education



ELOISE BONE
Nashville, N. C.
Grammar Grade Education
Lanier Society 1, 2, 3, 4, Secretary 2; Glee Club
1, 2, 4; Y.W.C.A. 1, 2, 3, 4; Junior "Y" Cabinet
1; S.G.A. 3; Asheville Teachers' College 3; Senior
Superlative 4.

ANNIE HART BOONE
Pendleton, N. C.
French and English
Emerson Society 1, 2, 3, 4, Secretary 4; Phi Sigma
2, 3, 4, President 4; English Club 1, 2, 3, 4; Verse
Speaking Choir 3; Delegate to Sigma Pi Alpha
Conference 3.



LOUISE BOONE
Jackson, N. C.
Grammar Grade Education
Poe Society 2, 3.

TEEGAN

SENIORS

MAMIE LEE BOYD

Lane, S. C.

Grammar Grade Education

A.C.E. 3, 4; F.T.A. 3, 4, Librarian 4; Y.W.C.A. 2, 4; W.S.G.A. 4, House President 4.

ANNIE RUTH BOYETTE

Benson, N. C.

Grammar Grade Education

VIRGINIA LEE BOYETTE

Wilson, N. C.

Grammar Grade Education

Sons and Daughters Club 3, 4; Y.W.C.A. 1; Poe Society 1; Dramatic Club 3, 4.

ALICE BRAGG

Franklinton, N. C.

Grammar Grade Education

Y.W.C.A. 1, 2, 3, 4; Emerson Society 1, 2, 3, 4; Granville County Club 1, 2, 3, 4; Marshal 3; Methodist Student Association 1, 2, 3, 4, Cabinet 3, Delegate to Methodist Student Conference 3, 4.

DOROTHY BRAGG

Stem, N. C.

Home Economics and Science

Granville County Club 1, 2; Poe Society 1, 2.

NELL BREEDLOVE

Oxford, N. C.

Primary Education

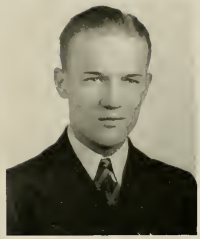
Peace Junior College 1; Poe Society 2, 4; Y.W.C.A. 2, 3, 4, Cabinet 4; W.S.G.A. 3, Vice-President 3, Editor of Handbooks 3; Chairman of Class Dance Committee 2, 3; Chairman Courtesy Card Committee 3; Representative to Southern Federation of W.S.G.A. 3; Representative to Southern Interracial Y.W.C.A. Conference 4; "Miss E.C.T.C." 3; Y.W.C.A. House of Comradeship Program 3; Granville County Club President 2; Vice-President Senior Class 4; Entertainment Committee 4; *Who's Who in American Universities and Colleges* 3; Class Executive Council 3, 4; Chairman Class Play Committee 4; Sponsor Junior "Y" Cabinet 4; Senior Play 4; Senior Superlative 4.

1940

E. C. C.

AILEEN BREWER
Marshville, N. C.

Home Economics and Science
Home Economics Club 3, 4; Science Club 3, 4;
W.A.A. 3, 4; Volley Ball 3; Y.W.C.A. 2, 3, 4.



ROBERT BREWER
Greenville, N. C.

History and Science
Campbell College 1, 2; Varsity Debater 1, 2;
Y.M.C.A. 3, 4; Glee Club 3; Phi Sigma Pi, Tau
Chapter 4.

JOHN DAVID BRIDGERS
Greenville, N. C.

Sophomore Play 1; Senior Play 2, 3, 4; Junior
Play 3; Mathematics Club 2, 3; Science Club 2, 3;
Phi Sigma Pi 3, 4; Historian 4; Y.M.C.A. 3, 4;
Cabinet 4; *Teco Echo* 1, 2, 3, Associate Editor 3;
Ki Pi Players 2, 3, 4, Vice-President 3; Class
Treasurer 4; Pre-Med Society 4; Varsity Club
Play 4; Senior Superlative 4.

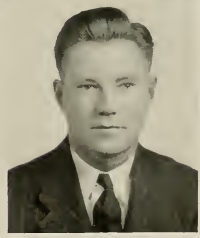


JENNIE MAE BRINKLEY
Coleraine, N. C.

Primary Education
Poe Society 1, 2, 3, 4; Vice-President Class 1;
Junior "Y" Cabinet 1; A.C.E. 3, 4; Y.W.C.A. 1.

ALBERTINA LOUISE BRINSON
Pollocksville, N. C.

Grammar Grade Education
Poe Society 1, 2, 3, 4; Y.W.C.A. 1.



GILBERT A. BRITT
Conway, S. C.

Mathematics and History
Mathematics Club 1, 2, 3, 4; *Teco Echo* Repre-
sentative 3; Glee Club 2; History Club 3, 4;
Y.M.C.A. 3, 4; Cabinet 3, 4; Senior Play 1.

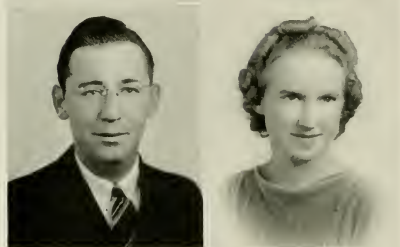
TECOAN

SENIORS



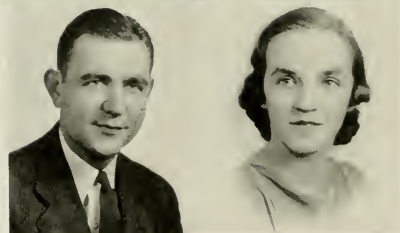
MARGUERITTE BRITT
Mount Olive, N. C.
Primary Education
A.C.E. 1, 2, 3, 4; Poe Society 1, 2, 3, 4.

SARAH MAE BRITT
Wendell, N. C.
Primary Education
Emerson Society 1, 2, 3, 4; Y.W.C.A. 1, 2, 3, 4;
Social Committee 3, 4; A.C.E. 3, 4; Tecoa Staff 4.



CLIFTON BRITTON
Milwaukee, N. C.
History and English
President Class 1, 2, 3, 4; Director Senior Play 1,
2, 3, 4; Ki Pi Players 3, 4; Student Director 3, 4;
Business Staff Tecoa 2; Science Club 2, 3; Direc-
tor Senior Normal Play 1; Director Sophomore,
Junior and Varsity Club Plays; Ki Pi Play 3;
*Who's Who in American Universities and Col-
leges* 3, 4; Director Y.M.C.A. and Y.W.C.A.
Passion Play; Y.M.C.A. 3, 4; Senior Superlative.

MAXIE BROADWELL
Winterville, N. C.
Primary Education
A.C.E. 3, 4.



DONALD BROCK
Trenton, N. C.
History and Physical Education
North Carolina State College 1, 2; Basketball 3, 4.

MRS. LEWELLYN THORNTON BROOME
Greenville, N. C.
Primary Education

1940

E. C. T. C.

BERT BROWNE

Bethel, N. C.

Y.W.C.A. 1; Poe Society 1; Phi Sigma Chapter of the Sigma Pi Alpha; University of North Carolina, Summer 3.

VIRGINIA BRYAN

Wilmington, N. C.

Primary Education

Emerson Society 1, 2, 3; Y.W.C.A. 1, 2; A.C.E. 2, 3, 4.



FLORA NEILL BULLOCK

Autryville, N. C.

English and French

Campbell College 1, 2; English Club 4; Phi Sigma 4.

DORIS ELIZABETH BURNEY

Lumberton, N. C.

Grammar Grade Education

Poe Society 1, 2; Glee Club 2, 3; Reportorial Staff *Teco Echo* 2; Wake Forest College, Summer 3; Junior Class Play 3; Proctor 3; W.S.G.A. 4; House President 4; Assistant Business Manager of Handbook 4; Methodist Student Association 3, 4.



SUDIE ELVA BUTLER

Clinton, N. C.

Primary Education

A.C.E.; Y.W.C.A.; Y.W.A.; Pineland College 1, 2.

MARY LOU BUTNER

Greenville, N. C.

Primary Education

A.C.E. 3, 4; President 4; College Band 3, 4.



TEEDAN

SENIORS



MARY FRANCES BYRD
 Wilmington, N. C.
Commerce and History
 Louisburg College 1; Zeta Delta Chapter Alpha Iota 4.

LOURAY CAISON
 Roseboro, N. C.
Commerce
 Pineland Junior College 1, 2; Commerce Club 3, 4.

URSULA BARROW CARR
 Farmville, N. C.
History and English
 Proctor 3, 4; History Club 3; English 3, 4; Business Staff TECOAN 4; Senior Play 4.

ESTHER MARIE CARMACK
 Richlands, N. C.
Primary Education
 Y.W.C.A. 3, 4; A.C.E. 3; Class Representative TECOAN 4.

EVA CAROLYN CARTER
 Warsaw, N. C.
Primary Education
 Poe Society 1, 2; A.C.E. 4; Marshal 2; *Teco Echo* 3; TECOAN 3, 4; Junior Executive Council 3; Senior Superlative; Proctor 4.

VANCE CHADWICK
 Straits, N. C.
 Phi Sigma Pi Fraternity 2, 3, 4, President 4; M.A.G.A. 3, 4; Y.M.C.A. 3, 4, Secretary 3, 4; Mathematics Club 2, 3, 4.

1940

E. C. C.

ELIZABETH CHAMBERS
Reidsville, N. C.
Primary Education

LILA JUNE CHANDLER
Greensboro, N. C.
Grammar Grade Education

Poe Society 1, 2, 3, 4; A.C.E. 4; Proctor 2, 4.

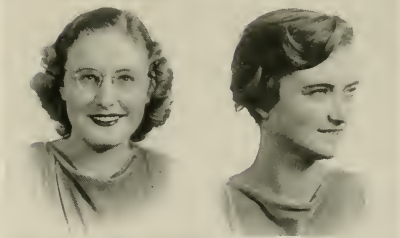


EVELYN CLARK
Grimesland, N. C.
Grammar Grade Education

Y.W.C.A. 1, 2, 3, 4; W.A.A. 1, 2, 3, 4; *Teco Echo* 2; W.A.G.A. 3; Methodist Student Association 1, 2, 3, 4; Cabinet 2, 4; Emerson Society 1, 2, 3, 4; English 2, 3, 4.

CAMILLE B. CLARKE
Lake Landing, N. C.
Home Economics and Science

Home Economics Club 2, 3, 4, Vice-President 3, President 4; Science Club 4.

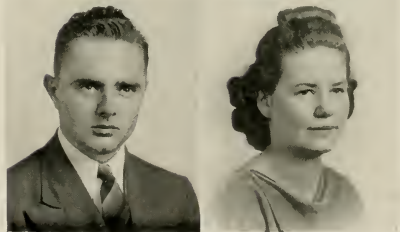


GORDON L. CLARKE
Greenville, N. C.
History and Science

Y.M.C.A. 3, 4; Elon College 2, 3; Emerson Society 1.

KATRINE COLLIE
Spring Hope, N. C.
Grammar Grade Education

Y.W.C.A. 2, 3; A.C.E. 4; Baptist Student Union 1, 2, 3, 4; A.C.E. Council 4.



TECOAN

SENIORS



EMILY JANE COPELAND
Ahoskie, N. C.

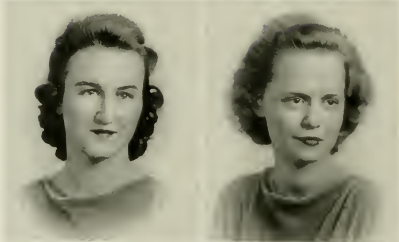
Primary Education

Chowan Junior College; Y.W.C.A. 3, Secretary 3;
Junior "Y" Cabinet 1; Class Treasurer 2; Lucal-
ian Literary Society 2; Laurel Society 1, 4; Glee
Club 1; A.C.E.; Senior Play 4.

MARY LYON COPPERSMITH
Littleton, N. C.

Primary Education

Y.W.C.A. 2; A.C.E. 4; Louisburg College.



VIRGIE COWARD
Merry Hill, N. C.

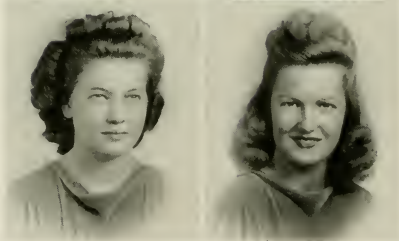
Grammar Grade Education

Chowan Junior College; Y.W.C.A.

KATHLEEN CRAWFORD
Pikeville, N. C.

Grammar Grade Education

Y.W.C.A. 1, 2, 3; F.T.A. 3.



ERNESTINE CREECH
Clayton, N. C.

Mathematics and Science

Poe Society 1, 2, 3, 4; Science Club 2, 3, 4; Mathe-
matics Club 2, 3; Y.W.C.A. 2; House President 3.

MARGARET CROWELL
Statesville, N. C.

Mitchell College; A.C.E. 3, 4.

1940

EUNICE CULLIPHER

Merry Hill, N. C.

Home Economics and Science

Home Economics Club 2, 3, 4; Poe Society 2, 3, 4;
Y.W.C.A. 2.

MARGUERITE CURRIN

Oxford, N. C.

Home Economics and Science

Home Economics Club 2, 3, 4; Social Chairman 3;
Science Club 2, 3, 4; Treasurer 3, Vice-President
1; Lanier Society 1; Y.W.C.A. 1, 4; Granville
County Club 2, 3; Delegate Inter-Racial Confer-
ence 2, 3.



FRANCES JOSEPHINE CUTCHIN

Washington, N. C.

Commerce and English

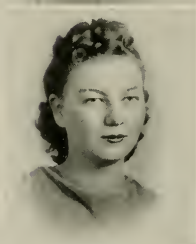
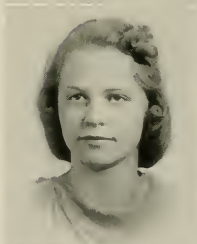
Mary Washington College 1, 2; Commerce Club
3, 4; Editor of *Business Beacon* 4; Y.W.C.A. 3,
4; Poe Society 4; English Club 4.

JOSEPHINE DANIEL

Stem, N. C.

Primary Education

Poe Society 1, 2, 3, 4; A.C.E. 2, 3, 4.



ANITA DAUGHTRIDGE

Rocky Mount, N. C.

History and English

History Club 2, 3, 4; English Club 2, 3, 4; A.D.S.
3, 4; Vice-President 3, President 4; Y.W.C.A. 2,
3, 4.

SYBLE DAUGHTRY

Murfreesboro, N. C.

Grammar Grade Education

Chowan College 1; A.C.E. 3, 4; Baptist Student
Union Council 4.



SENIORS

IDA FARRIOR DAVIS
Burgaw, N. C.

Grammar Grade Education

Poe Society 1, 2, Secretary 2; Science Club 2, 3, Vice-President 3; Class Treasurer 3; W.S.G.A. 4; Social Committee 3; Entertainment Committee 3; Business Staff Tecwan 2.



IRIS DAVIS

Stantonsburg, N. C.

French and English

Louisburg College 1; Poe Society 2, 3, 4, President 4; Sponsor Poe Dance 4; Y.W.C.A. 2, 3, 4; English Club 2, 3, 4; Phi Sigma Chapter of Sigma Phi Alpha 2, 3, 4; Ki Pi Players 2, 3, 4, Secretary 4; House President 4; W.S.G.A. 4; Associate Director of Passion Play 4; Associate Director of Class Play 3; President's Club 4; M.S.A. Conference 3, 4; Senior Superlative; *Who's Who in American Universities and Colleges*.



MAYME DAVIS

Seaboard, N. C.

Grammar Grade Education

Chowan Junior College 1, 2; W.A.A. 3.

PAGE DAVIS

Milwaukee, N. C.

Primary Education and Public School Music

Glee Club 1, 2, 3, 4; A.C.E. 1, 2, 3, 4; M.S.A. 1, 2, 3, 4; Y.W.C.A. 4; Secretary M.S.A. 4; Secretary-Treasurer A.C.E. 3, 4.



WINNIE RUTH DAVIS

Fremont, N. C.

Primary Education

Poe Society 1, 2; A.C.E. 4.

HARVEY DEAL

Greenville, N. C.

English and French

English Club 2, 3, 4, Vice-President 3; Phi Sigma Chapter Sigma Pi Alpha 2, 3, 4; Tau Chapter Phi Sigma Pi 2, 3, 4, Vice-President 3; Glee Club 1, 2, 3, 4; College Orchestra 1, 2, 3, 4; College Band 2, 3, 4; *Treo Echo* 1, 2, Associate Editor 2; *TECWAN* Associate Editor 3, Editor-in-Chief 4; Budget Committee 2; Entertainment 3; Social Committee 3; Constitution Committee 4; Ki Pi Players 2, 3, 4; "D" Play 1; Freshman Play 1; Sophomore Play 2; Junior Play 3; Technical Staff Senior Play 4; Delegate to N.C.C.P.A. 3, 4; Presidents Club 4; Class Executive Council 1, 2, 3, 4; M.S.G.A. 2; *Who's Who in American Universities and Colleges* 4; Publications Board 4; Senior Superlative.

1940

E.C.T.C.

BEATRICE DEAN
Wendell, N. C.
Primary Education



DORIS DOBSON
Kenansville, N. C.
Commerce and History
Commerce Club 1, 2, 3, 4; Y.W.C.A. 1, 4; Zeta Delta Chapter of Alpha Iota, Historian 4.

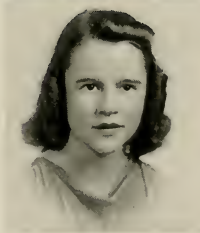
HOWARD DRAPER
Conway, N. C.
Y.M.C.A. 3, 4, Vice-President 3, 4; Cabinet 3, 4; Phi Sigma Pi 3, 4, Vice-President 3, 4; Constitutional Committee 4; Social Science Club 3, 4, Chairman of Social Committee 4; Northampton County Club 1, 2, 3, 4, President 3; Dormitory Club 3, 4.



MILLIE GRAY DUPREE
Angier, N. C.
Primary Education
Junior "Y" Cabinet 1; Poe Society 1; W.S.G.A. 4; *Teco Echo* Representative 3; F.T.A. 4, Treasurer 4; A.C.E. 4; M.S.A. Council 4.

MARY EAKES
Greenville, N. C.
Commerce

A.S.T.C. Summer School, Commerce Club 3, 4; Y.W.C.A. 3, 4; Poe Society 3, 4; Ki Pi Players 4; *Pieces O'Eight* Staff 4.



LUCILLE EDGE
Lumberton, N. C.
Mathematics and French
Mathematics Club 1, 2, 3, 4; Phi Sigma 2, 3; Y.W.C.A. 2; Poe Society 1; W.A.A. 3; *Teco Echo* 2; B.S.U. Council 3.

TEEDAN

SENIORS



ATHA LEA EDMUNDSON
Pikesville, N. C.

Primary Education
Emerson 1; A.C.E. 4.

MILDRED JUANITA ETHERIDGE
Whitakers, N. C.

French and English
Poe Society 1, 2, 3, 4, President 3; English Club 1, 2, 3, 4; Phi Sigma 1, 2, 3, 4; Vice-President Class 2; Marshal 2; W.S.G.A. 3, 4, President 4; Representative to S.I.A.S.G. 3, 4; Representative to N.C.S.F.A. 3; Chairman Budget Committee 1; Chairman Entertainment Committee 1; Social Committee 1; Chairman Publications Board 4; Feature 3; Y.W.C.A. 1, 4; Senior "Y" Cabinet 4; Representative N.S.F.A. 4; Senior Superlative 4.

MARY GOODWIN FEREBEE
Camden, N. C.

Meredith College 1; Y.W.C.A. 2; A.C.E. 2, 3, 4; B.S.U. Council 4.

KATHRYNNE FLEETWOOD
Edenton, N. C.

Primary Education
Lanier Society 1; A.C.E. 4.

HELEN PERKINS FLANAGAN
Greenville, N. C.

Mathematics and Science
W.C.U.N.C. 1; History Club 2, 3, Vice-President 3; Math Club 2, 3, 4, Vice-President 3; Science Club 1; Ki Pi Players 2, 3, 4; Emerson Society 2, 3, 4; *Teco Echo* Staff 3, 4, Business Manager 1; Delegate to N.C.C.P.A. 3, 4; Constitution Committee 4; Internatinnal Relation Club 4; Senior Play 4, Technical Staff 4.

EDITH FORREST
Greenville, N. C.

Primary Education
A.C.E. 4.

1940

E.C.T.C.

RUTH FRAZELLE
Richlands, N. C.

Commerce and English
English Club 2, 3, 4; Commerce Club 1, 2, 3, 4; Treasurer 3, Chairman Social Committee 4; Y.W. C.A. 1, 2, 3, 4; W.A.A. 1, 3, 4; Poe Society 1, 2, 3, 4; Zeta Delta Chapter Alpha Iota Sorority 4; Senior Play Technical Staff 4.



ELIZABETH FUSSELL
Rose Hill, N. C.

Grammar Grade Education



HAZEL GAINNEY
Dunn, N. C.

B.S.U. Council; A.C.E.; Y.W.A.

MILDRED GAMMON
Whitakers, N. C.

Primary Education

W.A.A. 1; President Edgecombe County Club 3; Y.W.C.A. 4; A.C.E. 3, 4.



GLADYS GASKINS
Cove City, N. C.

Home Economics and Science

Home Economics Club 1, 2, 3, 4; Y.W.C.A. 1, 2.

ETHEL GASTON
Greenville, N. C.

History and Physical Education

Emerson Society 2, 3, 4; Choric Speaking Group 2, 3; W.A.A. 3, 4; History Club 2, 3, 4; Band 2, 3; Ki Pi Players 2, 3, 4; President 4; Sophomore Play 2; Junior Play 3; Ki Pi Play 3; Social Committee 4; Chairman Student Chapel Committee 4; *Who's Who in American Universities and Colleges* 4; Assistant Director Varsity Club Play 4; Associate Editor *Trojan* 4; Exchange Editor *Pieces O'Eight* 1; *Teco Echo* 3; Superlative 4; Senior Play 4.

TECDAN

SENIORS



MARY IVE GAY
Zebulon, N. C.

Grammar Grade Education
Campbell College 1, 2; A.C.E. 4.

MARY HELLON GEDDIE
Fayetteville, N. C.

Pineland Junior College 1; Y.W.C.A. 2; W.A.A.
3; Y.W.A. 1; Glee Club 2, 3, 4; Poe Society 2.

ESTHER GILES
Lenden, N. C.

Home Economics and Science
Campbell 1, 2; Home Economics Club 3, 4; Science
Club 4.

HELEN GRAY GILLAM
Windsor, N. C.

English and French
Y.W.C.A. 1, 2, 3, 4; Junior "Y" Cabinet 1; Poe
Society 1, 2, 3, 4; Phi Sigma 2, 3, 4; English Club
2, 3, 4; Ki Pi Players 2, 3, 4; Vice-President 4;
Dramatics Club Play 3; Class Representative
Teco Echo 3; Senior Play 4.

PATSY MONTAGNE GLASS
Oxford, N. C.

Primary Education

GERALDINE GLOVER
Wilson, N. C.

Grammar Grade Education
Lanier Society 1, 2, 3, 4; Daughters and Sons
Club 3, 4; Y.W.C.A. 1, 2, 3, 4.

1940

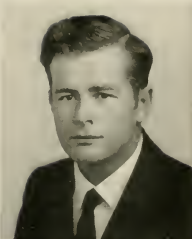
E.C.C.

JOHN GLOVER

Morehead City, N. C.

Science and Social Science

Glee Club 2, 3, 4; Band 2, 3; Football 2, 4; Social Science Club 3, 4; Publicity Chairman 3, 4; Erskine College 1; Senior Play 4.



LILLIAN REBECCA GRANT

Garysburg, N. C.

Commerce

Poe Society 1, 2, 3, 4, Vice-President 3; Y.W.C.A. 1, 2; English Club 2; W.A.A. 2; Commerce Club 2, 3, 4.

DOROTHY GREENE

Roanoke Rapids, N. C.

Primary Education

Poe Society 1, 3; A.C.E. 2, 3, 4.



ALETA JONES GRIFFIN

Summerfield, N. C.

Home Economics

W.C.U.N.C. 1, 2; Home Economics Club 3, 4.

MARY HELEN GULLEDGE

Greenwood, S. C.

Commerce

Lander College 1; Commerce Club 1, 2, 3, 4, Secretary 3; TEXAS Representative 4; Assistant Student Treasurer 3; Student Treasurer 4; Social Committee 3, 4, Chairman 4; Budget Committee 3, 4; Executive Council Junior Class 3; Constitution Committee 4; TEXAS Business Staff 4; Publications Board 4; WPA's WPA in American Universities and Colleges 4; Senior Superlative; Zeta Delta Chapter Alpha Iota Sorority 4, President 4.



MYLDRED GUPTON

Essex, N. C.

Grammar Grade Education

W.A.A. 1, 2, 3, 4; Dormitory Head for Sports 4; Y.W.C.A. 1, 2; Poe Society 1, 2; Softball Varsity 3; Volley Ball Varsity 3.

TEEDAN

SENIORS



META VIRGINIA HAMMOND

Andrews, S. C.

Commerce and French

Emerson Society 1, 2, 3, 4; Secretary 2; Marshal 2; Vice-President 3; President 4; Y.W.C.A. 1, 2, 3; TICOAN Staff 2, 3; Commerce Club 1, 2; Phi Sigma 1, 2; Social Committee 2.

MARGUERITE VIRGINIA HARDEE

Greenville, N. C.

Commerce and Mathematics

Mathematics Club 2, 3, 4; Commerce Club 2, 3, 4.



CHARLES D. HARRIS, JR.

Marshallberg, N. C.

History and Social Science

Phi Sigma Pi Fraternity, Tau Chapter; Social Science Club; Vice-President; Y.M.C.A.; Tennis Team; International Relations Club.

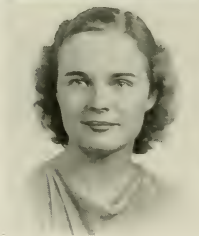


CHRISTINE HARRIS

Thomasville, Tenn.

English and French

English Club 1, 2, 3, 4; Phi Sigma Chapter of Sigma Phi Alpha 2, 3, 4; Poe Society 2, 3, 4; Y.W.C.A. 1, 2, 3, 4; Choral Speaking Choir 3, 4; Marshal 3; Chief Marshal 4; Sponsor Poe Dance 1; Treasurer Phi Sigma 3; Treasurer English Club 1; Feature 2, 4; Senior Superlative.



EDITH W. HARRIS

Louisburg, N. C.

English and History

Louisburg College 1, 2; Poe Society 3, 4; Vice-President 4; English Club 4.



MRS. FRANCES HARRIS

Greenville, N. C.

Science and English

Science Club 1, 2, 3; Poe Society 1, 2, 3, 4.

1940

E.C.T.C.

GERALDINE HARRIS

Greenville, N. C.

French and English

Two Echo Representative 1; Freshman Class Play 1; Lanier Society 2, 3, 4; Sophomore Class Play 2; KJ PI Players 2, 3, 4, Vice-President 3; Junior Class Play 3.



MARIE HART

Ayden, N. C.

Primary Education

Lanier Society 1.



RUTH HAWKES

Willow Springs, N. C.

Home Economics and Science

Lanier Society 1, 2, 3, 4, Treasurer 2; Home Economics Club 3, 4; Science Club 2, 3, 4, Publicity Manager 4; W.A.A. 3, 4; Y.W.C.A. 4; Technical Staff Senior Play 4.



VENETIA HEARNE

Greenville, N. C.

Home Economics and Science

Poe Society 1, 2, 3; Home Economics Club 2, 3, 4; Science Club 2, 3, 4.

MARJORIE HEATH

Newport, N. C.

Primary Education

Junior "Y" Cabinet 1; Y.W.C.A. 1, 2, 3, 4; Poe Society 1, 2; Vice-President M.S.A. 2; President Methodist S. S. Class 3; A.C.E. 4.

FAYE HELMS

Unionville, N. C.

Home Economics and Science

Lanier Society 1, 2, 3, 4; Science Club 2, 3, 4; Home Economics Club 2, 3, 4; P.S.A. 1, 2, 3, 4.

TECDAN

SENIORS



ROWENA HICKS

Oxford, N. C.

Y.W.C.A. 1, 2; Mathematics Club 1, 2, Secretary 2.



ROSALINE HIGH

Wendell, N. C.

Primary Education



INDIA HILL

Benson, N. C.

Mathematics and English

Glee Club 1, 3; Mathematics Club 1, 2, 3, 4;
English Club 1, 2, 3, 4; B.S.U. Council 3, 4.



CORNELIA HILL

Murfreesboro, N. C.

Primary Education

Chowan College 1, 2.



JOYCE ELAINE HILL

Ayden, N. C.

Commerce and English

Poe Society 1, 2, 3, 4; Commerce Club 1, 2, 3, 4;
English Club 2, 4; Ki Fi Players 3, 4; Y.W.C.A.
1; Commerce Club Secretary and Reporter 4;
Treasurer Ki Fi Players 4; Proctor 4; Senior
Play 4; Zeta Delta Chapter Alpha Iota Sorority
4, Marshal 4.



JENNIE HINSON

Stanfield, N. C.

Primary Education

Pfeiffer Junior College 1; W.A.A. 3, 4; Y.W.C.A.
2, 4; Head of Hiking 4.

1940

E. E. T. C.

ARTHUR L. HODDER
 Braddock, Pa.
 Appalachian 1, 2, 3; Football 4.



SYBIL HOFFMAN
 Kinston, N. C.
Grammar Grade Education
 M.S.A. 2, 3, 4.



MIRIAM HOGGARD
 Lewiston, N. C.
Home Economics and Science
 Chowan Junior College 1, 2.



OLGA HOGGARD
 Lewiston, N. C.
Grammar Grade Education
 Chowan College 1, 2.



DOROTHY HOLLAR
 Greenville, N. C.
History, English and French
 English Club 2, 3, 4; *Teco Echo* Reporter 2; Poe Society 2, 3, 4; W.A.A. 2, 3; Associate Editor *Teco Echo* 2, 3, Editor 4; History Club 2, 3, 4, Secretary-Treasurer 2; Ki Pi Players 3, 4; Marshal 3; Ki Pi Players Historian 3; English Club Reporter 3; Budget Committee 3; N.C.C.P.A. Delegate 3; Pi Sigma 4; Publications Board 4; Co-Editor *Teco Echo* Summer 3; W.S.G.A. 4; Pitt County Club 1, Secretary 1; *Who's Who in American Universities and Colleges* 4.



MARY PEACE HOWARD
 Salemburg, N. C.
Primary Education
 Meredith 1; Pineland Junior College 2; Y.W.C.A. 3; W.A.A. 3; A.C.E. 4; Y.W.A. 4.



TECOPAN

SENIORS



LUCY HUDGINS
Sunbury, N. C.
Home Economics and Science
Home: Economics Club 1, 2, 3, 4.

CASSIE HUDSON
Pantego, N. C.
French and English
English Club 1, 2, 3, 4; Phi Sigma 1, 2, 3, 4; Verse Speaking Choir 3; English Club Treas. Representative 4; Secretary-Treasurer Phi Sigma 4.



MARGUERITE HUTCHINSON
Rockingham, N. C.
Mathematics and French
Y.W.C.A. 1; Mathematics Club 1, 2, 3, 4. President 3; Proctor 2; House President 3.

GLADYS IPOCK
Erul, N. C.
Commerce and French
W.S.G.A. 3, Secretary 3; Commerce Club, President 2; *Who's Who Among Students in American Colleges and Universities*; Zeta Delta Chapter Alpha Iota Sorority 4.



G. A. JACKSON
Winterville, N. C.
Science and Physical Education
Wake Forest College 1, 2, 3.

JOSEPHINE JACKSON
Godwin, N. C.
Home Economics and Science
Y.W.C.A. 1, 2, 3, 4; W.A.A. 1, 2, 3, 4; Poe Society 1, 2; Science Club 2, 3, 4; Home Economics Club 2, 3, 4; Head of Hiking 2; Head of Individual Sports 3, 4; Head of Outdoor Cookery Club 4; Varsity Basketball 2.

1940

E.C.T.C.

MARGARET JACKSON
Grifton, N. C.

Primary Education
A.C.E. 4; Y.W.C.A. 4.

MATTIE LEE JACKSON
Lumberton, N. C.

English and History
English Club 2, 3, 4, President 4; History Club
2, 3, 4, President 4; Speech Choir 3, 4; B.S.U.
Council 4; Y.W.C.A. 2.

EDNA JAMES
Burgaw, N. C.

Grammar Grade Education
Poe Society 1, 2; W.A.A. 2, 3; Y.W.C.A. 1, 2.

MARGARET GILLIAM JARVIS
Moyock, N. C.

Commerce and Science
Science Club 1; Emerson Society 1, 2; Commerce
Club 1, 2; Y.W.C.A. 1, 2, 3, 4; W.A.A. 1, 2;
Associate Editor TECOAN 4; M.S.A. Council 4;
N.C.C.P.A. Delegate 4; Technical Staff Senior
Play 4.

EVELYN JERNIGAN
Goldsboro, N. C.

Home Economics and Science
Glee Club 1, 2, 3, 4; Y.W.C.A. 1; Y.W.A. 4;
Science Club 2, 3, 4; Home Economics Club 2, 3,
4.

LUCILLE JOHNSON
Ayden, N. C.

Primary Education
A.C.E. 2, 3, 4; *Teco Echo* Staff 2, 3, 4, Business
Manager 3; Publications Board 3, 4; P.S.A. 3, 4,
Vice-President 4; N.C.C.P.A. Delegate 2, 3.



TECOAN

SENIORS



MYRTLE JOHNSON
Roseboro, N. C.
Primary Education
A.C.E. 4.

MARY PARKER JOHNSON
Goldsboro, N. C.
Primary Education
Junior "Y" Cabinet 1. Senior "Y" Cabinet 4. Y.W.C.A. 1, 2, 3, 4; Methodist Cabinet 2, 3; A.C.E. 1, 2, 3, 4; Secretary 2; W.S.G.A. 2, 3; House President 3; Poe Society 1, 2; *Who's Who in American Universities and Colleges* 3; Entertainment 4.

SULOU JOHNSON
Kenly, N. C.
Primary Education
Poe Society 1, 2, 3, 4; Y.W.C.A. 1, 2, 3, 4; A.C.E. 1, 2, 3, 4; W.A.A. 2.

THADYS ELAINE JOHNSON
Pendleton, N. C.
Commerce and English
W.A.A. 2; Y.W.C.A. 2, 3; B.S.U. 1, 2, 3, 4; English Club 2, 3, 4; Phi Sigma 2, 3, 4; Commerce Club 2, 3, 4; President 4; Poe Society 1, 2, 3, 4; Secretary 4; Proctor 3; Band 4; Dormitory Hostess 4; Ki Pi Players 3, 4; Zeta Delta Chapter Alpha Iota Sorority 4; Social Secretary 4.

ANNA WINIFRED JONES
Farmville, N. C.
Grammar Grade Education
Y.W.C.A. 1; Lanier Society 1.

VERA JOYNER
Louisburg, N. C.
Grammar Grade Education
Pineland College 1, 2; F.T.A. 3, 4.

1940

ECTC

CAROLYN ELIZABETH LAMBE
Pantego, N. C.

Commerce and French

Poe Society 1; Commerce Club 1; Phi Sigma 1;
Y.W.C.A. 1; *Teeo Echo* Business Staff 2; Pres-
ident Student Branch of Episcopal Church; Zeta
Delta Chapter Alpha Iota 4.

FRANCES PEELE LAMBE
Pantego, N. C.

History and Social Science

Poe Society 1; Y.W.C.A. 1; TECOAN Staff 2; Eng-
lish Club 1.



BERTHA PEARL LAMM
Wilson, N. C.

Grammar Grade Education

W.C.U.N.C. 1; Poe Society 2, 3, 4; Y.W.C.A. 2,
3, 4.

LOUISE LATHAM
Mocksville, N. C.

Home Economics and Science

Brevard Junior College 1, 2; Home Economics
Club 3, 4; Science Club 4.



SHIRLEY GRAY LATHAM
Bath, N. C.

Grammar Grade Education

Senior Play 4.

SUE HARLEE LAWRENCE
Tarboro, N. C.

Home Economics and Science

Home Economics Club 2, 3, 4; Y.W.C.A. 1; Stu-
dent Auxiliary Episcopal Church 2, 3, 4.



TECOAN

SENIORS



MARGARET LAWRENCE
Tarboro, N. C.

Primary Education
Peace Junior College 1, 2; Y.W.C.A. 3; A.C.E. 3;
Glee Club 3.

BELMA LEE
Aropahoc, N. C.

History and English

KATHERINE P. LEWIS
Enfield, N. C.

Louisburg College 1, 2; Proctor 3; History Club
3; Phi Sigma 3, 4; Tecum Staff 4; *Pieces O'Eight*
Staff 4, Circulating Manager 4; I.R.C. 4; Senior
Superlative.

ELSIE LILLEY
Eure, N. C.

Home Economics and Science
Home Economics Club 2, 3, 4; Science Club 2, 3,
4; W.W.A. 3.

RUTH LUTHER
Eleazer, N. C.

History and English
English Club; History Club; Y.W.A.; Verse
Speaking Choir.

NELL MANESS
Buies Creek, N. C.

Home Economics and Science
Campbell College 1, 2; Home Economics Club 3,
4; Science Club 3, 4; Lanier Society 4.

1940

E. T. C.

WILLINE MANESS
Troy, N. C.

Primary Education
Campbell College 1, 2; A.C.E. 3, 4; B.S.U. Council 4.

EDITH MARTIN
Red Oak, N. C.

Primary Education
A.C.E. 3, 4; Vers. Speaking 3; Poe Society 3, 4; Delegate to A.C.E. Convntion 3; W.C.U.N.C. 1, 2.

VIRGINIA MARTIN
Parkton, N. C.

Primary Education
Teco Echo Staff 1, 2, 3, Reporter 1, 2, Associate Editor 2; W.S.G.A. 2; Glee Club 2; Poe Society 1, 2, 3, 4; English Club 2, 3, 4; Phi Sigma 2, 3, 4; Speech Choir 3, President 3; M.S.A. Cabinet 1, 2, 3, 4, President 3; Vice-President N.C.M.S.A. 3; Delegate to National M.S.A. Convention 2; Y.W.C.A. 2, 3, 4, Cabinet 3, President 1; Delegate Blue Ridge Conference 3; Chapel Committee 3; Marshal 4; Alumni Sons and Daughters 3, 4; Who's Who in American Universities and Colleges 3; Senior Superlative.

SARAH ANN MAXWELL
Pink Hill, N. C.

English and French

MARY ELLEN MATTHEWS
Raleigh, N. C.

Commerce and English
Y.W.C.A. 1, 2, 3, 4; Commerce Club 1, 2, 3, 4; English Club 1, 2, 3, 4; Ki Pi Players 3, 4; Chairman Class Dance 4; Executive Council Junior Class 3; Senior Play 4.

ANNIE MEADOWS
Maysville, N. C.

Primary Education
Poe Society 1; Y.W.C.A. 2; A.C.E. 2; M.S.A. 1, 2, 3, 4.



TECOAN

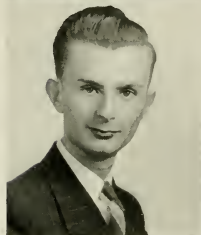
SENIORS



LEON MEADOWS, JR.
Greenville, N. C.
Mathematics and Science
Mathematics Club 2; Tennis 2, 3, 4; Band 2, 3.



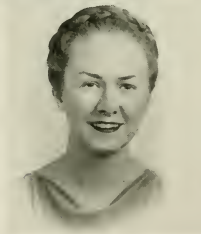
MAUDE MELVIN
Salemberg, N. C.
Primary Education
Pineland College 1, 2; Greensboro College 3; Glee Club 1, 2, 3, 4; Superlative 4; W.S.G.A. 4; A.C.E. 3, 4; Y.W.C.A. 4.



THOMAS J. MEEKS
Bethel, N. C.
Mathematics and Science
Science Club 2, 3, 4; Band 3, 4; Orchestra 3; Y.M.C.A. 4.



IVA MESSICK
Lowland, N. C.
Primary Education



DOROTHY REED MILLER
Wilmington, N. C.
Grammar Grade Education
Y.W.C.A. 2, 3, 4; A.C.E. 3, 4; May Queen 3, 4; Feature 3, 4; Duke University 1.



ELSIE MAE MILLS
Greenville, N. C.
Science and Social Science

1940

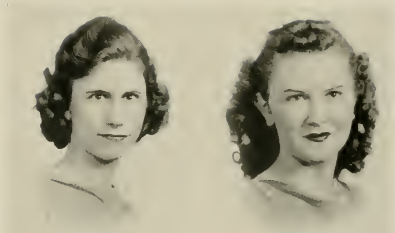
E.C.T.C.

MYRTLE MITCHELL
Kittrell, N. C.

Home Economics and Science
Home Economics Club 3, 4; Science Club 4; Girl
Scouts 3; Louisburg College 1, 2.

EDNA MOORE
Greenville, N. C.

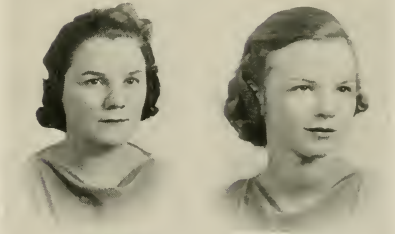
Primary Education
Poe Society 1, 2; A.C.E. 4.



LOTTIE MOORE
Kinston, N. C.

Grammar Grade Education
Glee Club 1, 2, 3, 4; W.S.G.A. 2, 4; Lanier So-
ciety 1, 2; Y.W.C.A. 1, 2.

MARGARET WADE MOORE
Bethel, N. C.



NATALIE LARUE MOORING
Stokes, N. C.

English, French and History
Teco Echo Reporter 1, 3; Phi Sigma 1, 2; English
Club 1, 2, 3; *Teco Echo* Associate Editor 4; *Pieces*
O'Eight 4; Business Associate 4; Alumni Sons
and Daughters 3, 4; Senior Play, Technical Staff.

KATHERINE E. McCLEES
Page, W. Va.

Grammar Grade Education
Poe Society 1, 4; Glee Club 2, 3, 4; A.C.E. 4;
Y.W.C.A. 1, 4; Senior Play 4; Senior Superlative.



TECOAN

SENIORS



ROSA LEE MCGOWAN

Greenville, N. C.

History and English

Lanier Society 1; English Club 1, 2, 3, 4; History Club 2, 3, 4; Poe Society 2, 3, 4; Budget Committee 4.

ORA MCHAN

Almond, N. C.

Home Economics and Science

Y.W.C.A. 1, 4; Junior "Y" Cabinet 1; Emerson Society 1; Home Economics Club 3, 4; Science Club 3; B.S.U. Council 4; Proctor 4; Y.W.C.A. Cabinet 4.

ANNA MCLAWHORN

Vanceboro, N. C.

Commerce and History

EVA MCMILLAN

Godwin, N. C.

Home Economics and Science

Y.W.C.A. 1, 2, 3, 4; Science Club 2, 3, 4; Home Economics Club 2, 3, 4; W.A.A. 1, 2, 3, 4; Proctor 2; Girl Scouts 2; W.A.A. President 4; Head of Intramural Sport 2, 3; Poe Society 1, 2; Varsity 1, 2, 3.

ANNIE RUTH MCMILLAN

Wade, N. C.

Grammar Grade Education

W.C.U.N.C. 1, 2; Y.W.C.A. 4; A.C.E. 4.

FRANCES NANCE

Bonlee, N. C.

English and French

Band 3, 4; W.A.A. 2, 3, 4; Treasurer 4; Phi Sigma 3, 4; Vice-President 4; English Club 3, 4.

1940

ETC

BETTY NEAL

Louisburg, N. C.

Grammar Grade Education



ANITA PAULINE NELSON

Atlantic, N. C.

Home Economics and Science

Home Economics Club 2, 3, 4; Y.W.C.A. 1, 2, 4; Orchestra 3, 4; Music Club 1, 2; County Club 2, 3, Secretary 2, President 3.

PRUE COLLINS NEWBY

Hertford, N. C.

Home Economics and Science

Poe Society 1; Y.W.C.A. 1, 2, 3, 4, Junior "Y" Cabinet 1, Advisor to Junior "Y" Cabinet 2, Vice-President 3, Secretary 2; Vice-President Class 3; Basketball Team 1; Tennis Team 2; Home Economics Club 2, 3, 4; W.A.A. 1, 2; TPCOAN Staff 2, 3, 4, Business Staff 2, 3, Business Manager 4; *Who's Who in American Universities and Colleges* 3; M.S.A. Council 2, 3; N.C.C.P.A. 3, 4; Publications Board 1; Senior Play 4.



GRACE NEWELL

Goldsboro, N. C.

Home Economics and Science

Louisburg College 1, 2; Science Club 3, 4; Home Economics Club 3, 4; Band 3.

FRANCES E. NEWSOME

Winton, N. C.

Home Economics and Science

Science Club 2, 3, 4, Treasurer 4; Home Economics Club 2, 3, 4; W.A.A. 1, 2, 3, 4.



HAMPTON NOE

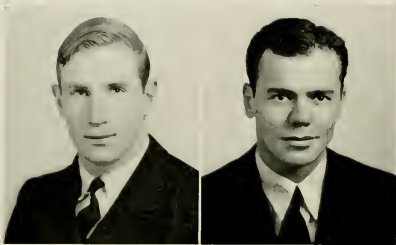
Wilmington, N. C.

Science and History

Citadel 1; History Club 2, 3, 4; Science Club 2, 3, 4; Football 2; Cheerleader 4; Senior Play, Technical Staff 4.

TECOAN

SENIORS

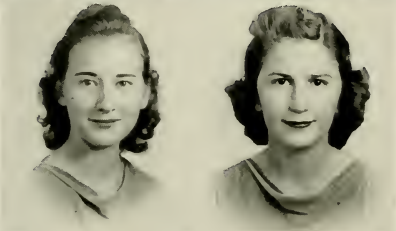


JOHN C. NOE

Bath, N. C.
Football 1, 2, 3, 4; Baseball 1, 2, 3, 4; Varsity
Club 2, 3, 4; I.R.C. 4.

U. S. NORWOOD

Norwood, N. C.
History and Social Science
N. C. State.

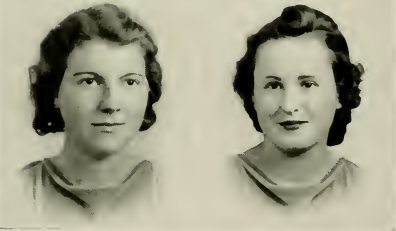


LAURA OATES

Faison, N. C.
Commerce and History
Commerce Club 2, 4; History Club 3; Lanier
Society 1, 2.

EDNA OGBURN

Angier, N. C.
Home Economics and Science
Meredith College 1, 2; Science Club 3, 4; Lanier
Society 3, 4; Marshal 4; Home Economics Club
2, 4, Secretary 4.



PAULINE OUTLAW

Seven Springs, N. C.
Home Economics and Science
Poe Society 1; Home Economics Club 2, 3, 4;
Science Club 2, 3, 4; Girl Scout 2, 3; Y.W.C.A.
2, 3, 4.

MABEL OWENS

Walstonburg, N. C.
W.A.A. 1, 2, 3, 4; *Teco Echo* Reporter 2; TECOAN
Representative W.A.A. 4.

1940

E.C.T.C.

ETHEL PADGETT

Rocky Mount, N. C.
Grammar Grade Education
 Y.W.C.A. 1; Poe Society 1, 2, 3; Glee Club 1, 2;
 Ki Pi Players 3, 4; *Teco Echo* Staff 2, 3, 4, Associate Editor 2, 3, Associate Business Manager 4;
Pieces O'Eight Business Manager 4; Executive Council Sophomore Class 2; N.C.C.P.A. 3, 4.



EILEEN PAKE

Marshallberg, N. C.
Grammar Grade Education
 Y.W.C.A. 1, 2; Poe Society 1, 2.



ANNIE LAURIE PARKER

Pollocksville, N. C.
Physical Education and English
 English Club 2, 3, 4; W.A.A. 3, 4; Head of Sport 4; Soccer Varsity 3, 4; Y.W.C.A. 1; M.S.A. 2, 3, 4; Poe Society 1, 2.

HOMER VANN PARKER, JR.

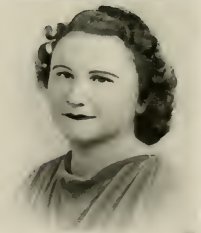
Murfreesboro, N. C.
 Chowan College 1, 2; Science Club 3, 4; Phi Sigma Pi Fraternity 3, 4; Y.M.C.A. 4; Senior Superlative.

ISABEL PARKER

Speed, N. C.
Commerce and Social Science
 Lanier Society 1, 4; A.C.E. 2; Commerce Club 2, 3, 4; Zeta Delta Chapter of Alpha Iota Sorority 4.

GERALDINE PATE

Pollocksville, N. C.
Primary Education
 Campbell College 1, 2; A.C.E. 4; Lanier Society 4.



TECOAN

SENIORS



ALTON W. PAYNE
Gull Rock, N. C.

Commerce and Science

Superlative 4; Commerce Club 1, 2, 3, 4; Science Club 1, 2, 3, 4; Glee Club 1, 2, 3, 4; Y.M.C.A. 3, 4; Poe Society 1, 2, 3, 4; Dramatics Club 3, 4; M.S.G.A. 3; Phi Sigma Pi 2, 3, 4; Treasurer 4; *Pieces O' Eight*, Assistant Business Manager and Business Manager 4; Social Committee 4; Y.M.C.A. Chairman of Social Committee 4; Executive Council Junior Class 3; Senior Play 1; Speech Choir 3; Constitution Committee 4.



JENNIE LOWE PEEBLES
Advance, N. C.

Grammar Grade Education

Appalachian State Teachers College 1, 2, 3; F.T.A. 3, 4; A.C.E. 4.



EVELYN PENDERGRASS
Tomahawk, N. C.

Home Economics and Science

Home Economics Club 2, 3, 4; Science Club 2, 3, 4; Poe Society 1; Proctor 3; Senior Play 4.



ANNIE LOUIS PERRY
Merry Hill, N. C.

Grammar Grade Education

Campbell College 1, 2.



MABEL LOIS PERRY
Powellsville, N. C.

Grammar Grade Education

Poe Society 1, 2, 3, 4; A.C.E. 4; F.T.A. 4.



MIRIAM PERRY
Colerain, N. C.

Primary Education

Poe Society 1, 2, 3, 4; Treasurer 4; A.C.E. 3, 4; Proctor 4.

1940

E. C. T. C.

MARY FRANCES PERSON
Louisburg, N. C.

Primary Education
Louisburg College 1, 2; Lanier Society 3, 4; A.C.E. 3, 4; Y.W.C.A. 3, 4; Band 3.



MAUDE EVANS PHELPS
Ahoskie, N. C.

Grammar Grade Education
Junior "Y" Cabinet 1; Y.W.C.A. 1; F.T.A. 3, 4; A.C.E. 3; Poe Society 1, 2, 3, 4.



HAZEL IRENE PHILLIPS
Warsaw, N. C.

Grammar Grade Education
Y.W.C.A. 1, 2; W.A.A. 3, 4; F.T.A. 3.

LAURA E. PITTMAN
Rocky Mount, N. C.

Social Science and History
I.R.C. 4; History Club 2, 3; Y.W.C.A. 1; W.A.A. 3, 4; Poe Society 1, 2, 3, 4.



ISABEL O. POLLARD
Virgilina, Va.

Primary Education
Y.W.C.A. 1, 2; A.C.E. 4; Publications Board of A.C.E. 4; Junior "Y" Cabinet 1; W.S.G.A. Summer 4. Secretary 4; Vice-President of Methodist Sunday School 3, 4.

JULIA MEREDITH POOLE
New Hill, N. C.

Home Economics and Science
Home Economics Club 2, 3, 4; Science Club 2, 3, 4; Proctor.

TELEPHON

SENIORS



MAGDALENE POWELL

Fremont, N. C.

Social Science and History

Poe Society 1, 2, 3, 4; Y.W.C.A. 1, 2, 3; Social Science Club 3, 4; President 4; History Club 2, 3, 4; Verse Speaking Choir 3; Junior "Y" Cabinet 1; English Club 3, 4.

LILLIAN PRICE

Pineville, N. C.

French and English

English Club 2, 3, 4; French Club 2, 3, 4; Y.W.C.A. 2; Proctor 3; Speech Choir 3, 4.

IOLA PRITCHARD

Seaboard, N. C.

Home Economics and Science

Louisburg College 1; Y.W.C.A. 2; Home Economics Club 2, 3, 4; M.S.A. Council 3; Lanier Society 3, 4.

RUTH WOOD PRITCHARD

Elizabeth City, N. C.

Home Economics and Science

Lanier Society 1, 2, 3, 4; Home Economics Club 2, 3, 4; W.S.G.A. 3; Vice-President Lanier Society 3; President Lanier Society 4; Marshal.

ANNA BELLE PRIVOTT

Edenton, N. C.

French and Mathematics

Mathematics Club 1, 2, 3, 4; Y.W.C.A. 1, 2, 3, 4.

MARIAN REED

Elizabeth City, N. C.

Grammar Grade Education

Class Secretary 1, 3; W.S.G.A. 2, 3; Treasurer 2; House President 3; Budget Committee 3; Secretary 3; Co-Chairman Social Committee 4; Representative to N.C.S.L. 2; Representative to N.C.S.F.; Lanier Society 1, 2, 3, 4; Marshal 2; A.C.E. 4; Y.W.C.A. 1, 2, 3, 4; Chairman Constitution Committee 4.

1940

E. C. T. C.

GLADYS RICHARDSON

Kenly, N. C.
Primary Education
 Poe Society 1; Y.W.C.A. 1.



ELIZABETH RIVERS

Raleigh, N. C.
Grammar Grade Education
 Poe Society 1, 2, 3, 4; Presbyterian Students Association 1, 2, 3, 4; Y.W.C.A. 1; A.C.E. 1.

MARENA ROSE ROBINSON

Wilmington, N. C.
Primary Education
 A.C.E. 4; M.S.A. 1, 2, 3, 4; Y.W.C.A. 1, 2, 3, 4; Emerson Society 1, 2, 3, 4.



VIRGINIA ROGERS

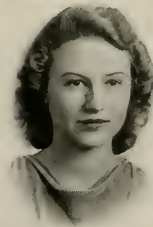
Mebane, N. C.
Primary Education
 Y.W.C.A. 2; W.A.A. 2; Poe Society 1, 2, 3, 4; B.S.U. Council; A.C.E. 4.

AUDREY SALTER

Sea Level, N. C.
Primary and Music Education
 M.S.A. 1, 2, 3, 4; Y.W.C.A. 1, 3, 4; A.C.E. 3, 4; Glee Club 3, 4; Junior Orchestra 3; Senior Orchestra 4; Band 3, 4.

EMMETT FRED SAWYER

Belcross, N. C.
History and Social Science
 Glee Club 1, 2; B.S.U.C. 3, 4; Y.M.C.A. 3, 4; President 3, 4; Representative to Blue Ridge 3; Cabinet 3, 4; State Y.M.-Y.W.C.A. Cabinet 4; Courtesy Card Committee 3; Phi Sigma Pi 3, 4; Associate Secretary 3; Secretary 4; M.S.G.A. 4; Constitutional Committee 4; Social Science Club 4; Christian Organization Council 4; Senior Superlative.



TECOAN

SENIORS



MIRIAM SHERLOCK SAWYER
Elizabeth City, N. C.

Science

Home Economics Club 1; Y.W.C.A. 1; Lanier Society 1, 2, 3; Science Club 2, 3, 4; Features 1, 4.

STANLEY SCARBOROUGH
Grifton, N. C.

Mathematics and Science

Mathematics Club 1; Science Club 1; Glee Club 3, 4; Manager Baseball 2, 4; Manager Basketball 2; Varsity Club 4.



RENA SESSOMS
Roseboro, N. C.

Home Economics and Science

Home Economics Club 3, 4; Science Club 3, 4.

WILLIAM SHELTON
Danville, N. C.

Commerce and Physical Education

Football 1, 2, 3, 4; Basketball 1, 2, 3, 4; Baseball 1, 2, 3, 4; Varsity Club 1, 2, 3, 4, President 3, 4; M.S.G.A. 3, 4, Secretary-Treasurer 3, President 4; Phi Sigma Phi Fraternity 3, 4; Budget Committee 4; Entertainment Committee 4; Social Committee 4; Courtesy Card Committee 4; Senior Superlative.



ELIZABETH SINGLETARY
Elizabethtown, N. C.

Grammar Grade Education

Y.W.C.A. 1; Emerson Society 1, 2, 3, 4; Science Club 2, 3, 4.

KATE SITTON
Almond, N. C.

History and Social Science

Brevard College 1, 2; I.R.C. 4.

1940

E. C. T. C.

BARBARA LOUISE SMITH
Atlantic, N. C.

English and French

Y.W.C.A. 1, 2, 3; English Club 2, 3; Phi Sigma
2, 3; Poe Society 1, 2, 3; Kl Pi Players 2; Senior
Superlative.



MABEL DARE SMITH
Fuquay Springs, N. C.

Physical Education and English

Campbell College 1, 2; W.A.A. 3, 4; English Club
3, 4; B.S.U. Council 4.



MARY THOMAS SMITH
Greenville, N. C.

*Public School Music and Grammar Grade
Education*

Glee Club 3, 4; Poe Society 1, 2, 3, 4.



MAVIL SMITH
Magnolia, N. C.

French and English

Lanier Society 1; Phi Sigma 1, 2, 3, 4; English
Club 4; Senior Play 4.

VIRGINIA DARE SMITH
Robersonville, N. C.

Grammar Grade Education

JULIA SPENCER
Swan Quarter, N. C.

Commerce and Science

Y.W.C.A. 1, 2, 3, 4; Emerson Society 1, 2; Sci-
ence Club 2; Commerce Club 2, 3, 4; M.S.A. 1, 2,
3, 4; Cabinet 4; Delegate 4; Zeta Delta Chapter
of Alpha Iota Sorority 4, Secretary 4.

TECOAN

SENIORS



STELLA RAY SPENCER
Scranton, N. C.
French, English and History
Emerson Society 1, 2, 3.

NELLIE B. STANFORD
Tyrone, N. C.
Grammar Grade Education
Lanier Society 3, 4; Y.W.C.A. 4; A.C.E. 3, 4;
Publications Committee 4; Entertainment Com-
mittee 4.



ETHEL STEPHENSON
Willow Springs, N. C.
Grammar Grade Education
Poe Society 1; F.T.A. 4.

HILDA STEPHENSON
Hobgood, N. C.
Grammar Grade Education
Y.W.C.A. 1; Varsity Basketball 1, 2, 3; Lanier
Society 1.



KATHLEEN STRICKLAND
Nashville, N. C.
Grammar Grade Education
Y.W.C.A. 1, 2, 3, 4; Junior "Y" Cabinet 1, Senior
"Y" Cabinet 2; State "Y" delegate 2; W.A.A. 1;
Lanier Society 1, 2, 3, 4; Marshal 2; TROAN
Business Staff 2, 3; Feature 2; Social Committee
3; Ki Pi Players 2, 3, 4; Speech Choir 2, 3; F.T.A.
3, 4; President 3, 4; *Who's Who in American Uni-
versities and Colleges* 1.

VIRGINIA SULLIVAN
Ansonville, N. C.
Grammar Grade Education
Wingate College 1, 2; F.T.A. 4.

1940

E.C.T.C.

ROSALIE SUTTON
La Grange, N. C.

Home Economics and Science

Home Economics Club 2, 3, 4, Secretary 4; W.S.G.A. 2.



ANNA LOUISE TAYLOR
Everetts, N. C.
Primary Education



ANNA M. TAYLOR
Southport, N. C.

Primary Education

Greensboro College 1, 2; A.C.E. 3, 4, Publications Representative 4; W.A.A. 3; Poe Society 3, 4.

ELIZABETH TAYLOR
Lillington, N. C.

Home Economics and Science

Y.W.C.A. 1; Home Economics Club 2, 3, 4; Science Club 2, 3, 4.



MAY FRANCES TAYLOR
Hookerton, N. C.

Primary Education

Sigma Phi Kappa 1, 2; Current Events Club 1; Pence Junior College 1, 2; Glee Club 2; A.C.E. 3, 4; Y.W.C.A. 3, 4.

MILDRED JANE TAYLOR
South Mills, N. C.

Grammar Grade Education

Lanier Society 1, 2, 3, 4; Marshal 2; F.T.A. 3, 4, Secretary-Treasurer 3, Secretary 4; W.S.G.A. Summer 3; Proctor 4.

TECOAN

SENIORS

MILDRED JEWELLE TAYLOR
Sea Level, N. C.

Grammar Grade Education

M.S.A. 1, 2, 3, 4; Y.W.C.A. 1, 2, 3, 4; A.C.E. 3, 4;
Co-Chairman Music Group 4; Music Club 2; Glee
Club 3, 4; Junior Orchestra 3; Senior Orchestra
4; Band 3, 4.

ELIZABETH THOMAS
Cameron, N. C.

Home Economics and Science

Campbell College 1, 2; Home Economics Club 3,
4; Science Club 4; Alumni Daughters and Sons
Club 3, 4; Outdoor Cookery Club 4.

LOIS THOMPSON
Leasburg, N. C.

Grammar Grade Education

Poe Society 1, 2, 3, 4; W.A.A. 3; Y.W.C.A. 1, 2,
4; F.T.A. 4.

MARIE TRIPP
Blounts Creek, N. C.

Commerce and Science

Commerce Club 1, 2, 3, 4; Poe Society 1, 2, 3;
Y.W.C.A. 1, 2; Science Club 1, 2; Proctor 2, 4;
Ki Pi Players 3, 4; Executive Council Junior
Class 3; Class Secretary 4; Zeta Delta Chapter
Alpha Iota Sorority 4; Vice-President 4; Business
Staff *Pieces O'Eight* 4.

ROSA LEE TRIPP
Bethel, N. C.

Grammar Grade Education

Y.W.C.A. 4; A.C.E. 4; F.T.A. 3, 4; M.S.A. 1, 2,
3, 4.

CATHERINE TYSON
Greenville, N. C.

Primary Education

1940

E. C. C.

DORIS VAUGHAN
Ahoskie, N. C.
Grammar Grade Education
Poe 1, 2, 3, 4; W.A.A. 4; A.C.E. 4.



MARGARET WATSON
Severn, N. C.
Primary Education

LARUE WEATHERS
Wendell, N. C.
English and History
English Club 1, 2, 3, 4; History Club 1, 2, 3, 4;
Ki Pi Players 3, 4; Glee Club 2, 3, 4; Y.W.C.A.
2; Senior Play 4.



MARJORIE WEATHERS
Wendell, N. C.
History and Physical Education
Lanier Society 1, 2, 3, 4; W.A.A. 1, 2, 3, 4; Y.W.
C.A. 1, 2; W.S.G.A. Summer 3; Senior Superlat-
ive.

FRANCES WEEKS
Tarboro, N. C.
Home Economics and Science
Junior "Y" Cabinet 1; Y.W.C.A. 1; Home Eco-
nomics Club 1, 2, 3, 4; Science Club 1, 2, 3, 4;
Poe Society 1, 2, 3, 4.



MARIE WELLS
Cedar Grove, N. C.
Grammar Grade Education
Poe Society 1, 2; A.C.E. 4; Y.W.C.A. 4; Presby-
terian Student Association 1, 2, 3, 4.

TECOAN

SENIORS



BARBARA ANNE WEST

Moyock, N. C.

Home Economics and Science

Y.W.C.A. 1, 2, 3, 4; Emerson Society 1, 2, 3, 4;
Home Economics Club 2, 3, 4.

RICHARD ROBERT WEST

Moyock, N. C.

History and Science

N. C. State College 1; Appalachian State Teachers
College Summer 3; History Club 3; Science Club
3, 4; Y.M.C.A. 3, 4.



LINDSAY WHICHARD

Stokes, N. C.

History and English

Mars Hill College 1; Poe Society 3, 4; English 2,
3, 4; History Club 2, 3, 4; Ki Pi Players 2, 3, 4;
Toro Echo 2, 3, 4; Associate Editor 3; TECOAN
Associate Editor 3; N.C.C.P.A. 3; Phi Sigma Pi
3, 4; Junior Play 3; Ki Pi Play; Assistant Tech-
nical Director Senior Play 3; Varsity Club Play
1; Class Treasurer 3; Director Poe Society Play
1; Chapel Committee 4; Entertainment Commit-
tee 1; Glee Club 3; Speech Choir 2, 3; Senior
Supernative; Senior Play 1; Technical Staff Senior
Play 4.

MARJORIE WHITEHURST

Bethel, N. C.

French and English

Y.W.C.A. 1; Poe Society 1; Phi Sigma 1, 2, 3.



HERBERT M. WILKERSON

Greenville, N. C.

Mathematics and Science

Mars Hill College 1; Boxing 2, 3, 4; Tennis Team
2, 4; Baseball 2; Varsity Club 3, 4; Mathematics
Club 2; Science Club 2; Pre-Med Society 4.

DORRIS WILEY

Tarboro, N. C.

Primary Education

Meredith College 1, 2.

1940

E.C.T.C.

HAZEL C. WILLIAMSON
 Kenansville, N. C.
Primary Education
 A.C.E. 2, 4; Y.W.C.A. 1.

MARY LOU WILLETS
 Whiteville, N. C.
French and English
 Meredith College 1; Phi Sigma 2, 3, 4; Glee Club 4.

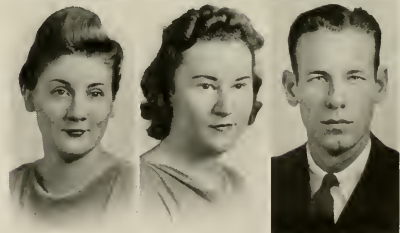
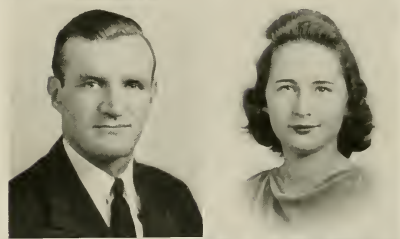
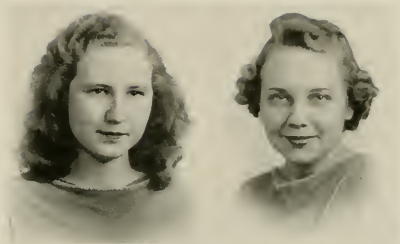
CECIL WILLIS
 Hickory, N. C.
Science and History
 Rutlerford College 1; W.C.T.C. 2; Football 1, 2.

FRANCES WILSON
 Henderson, N. C.
Home Economics and Science
 Y.W.C.A. 1, 2, 3, 4; Home Economics Club 2, 3, 4; Science Club 2, 3; Lanier Society 1, 2, 3, 4.

AGNES WOOD
 Essex, N. C.
Home Economics and Science
 Poe Society 1, 2; Y.W.C.A. 1, 2, 3, 4; Science Club 1, 2, 3, President 4; Proctor 2; W.A.A. 4; Marshal Summer 3.

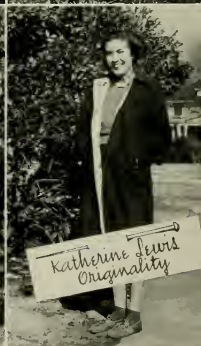
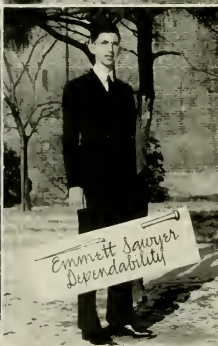
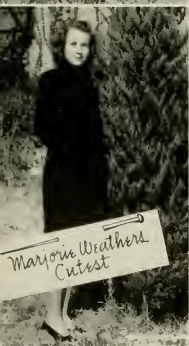
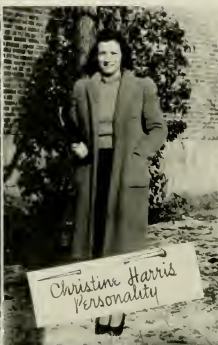
VIRGINIA WOODS
 Hurdle Mills, N. C.
Primary Education
 Poe Society 1, 2, 3, 4; Marshal 3; W.A.A. 2; Y.W.C.A. 2; A.C.E. 3.

WILLIAM VICTOR WORKMAN
 Asheville, N. C.
Commerce
 Mars Hill College 1, 2; W.C.T.C. 3; Commerce Club 3, 4; Ki Pi Players 3.



TECOAN

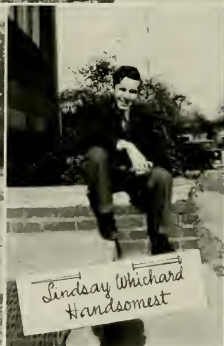
SENIOR



SUPERLATIVES



SENIOR SUPERLATIVES



JUNIORS



MERNER



CASTLEBURY



POWELL



ROSS

BILL MERNER *President*
MAISE CASTLEBURY..... *Vice-President*
ALICE POWELL..... *Secretary*
REBECCA ROSS..... *Treasurer*



JUNIORS

First Row: LILLIAN ABBE, Greenville, N. C.; PAULINE E. ABEYOUNIS, Greenville, N. C.; MADELINE ADAMS, Grimesland, N. C.; YVONNE S. ALDERMAN, Rose Hill, N. C.; EUGENIA ALLEN, Elizabethtown, N. C.

Second Row: GLADYS ALLEN, Albemarle, N. C.; MARY AGNES ALSTON, Inez, N. C.; O. D. ANDREWS, Rocky Mount, N. C.; TULA NELL ATKINSON, Orrum, N. C.; MARY KATE AUSTIN, Peachland, N. C.

Third Row: ELOISE AVERETTE, Wake Forest, N. C.; MARY GRANT BAILEY, Selma, N. C.; SARAH ANN BAKER, Youngsville, N. C.; MARGARET BARCLIFT, Wilmington, N. C.; LAUMETA BARDEN, Orrum, N. C.

Fourth Row: BESS BARNHARDT, Acme, N. C.; PEARLIE WARD BARNHILL, Greenville, N. C.; REO BASS, Nashville, N. C.; LESSIE BATEMAN, Columbia, N. C.; EVELYN BAZEMORE, Lewiston, N. C.



JUNIORS

First Row: MARY ELIZABETH BEASLEY, Lumberton, N. C.; ELIZABETH BEICH, Colerain, N. C.; JOSEPHINE BETTS, Beaufort, N. C.; CAMILLA BISSETTE, Wilson, N. C.; DORIS BLALOCK, Black Creek, N. C.

Second Row: ANNA BELLE BOYD, Greenville, N. C.; RAYCHEL BOYD, Pinetown, N. C.; MARY HELEN BOYKIN, Williamston, N. C.; RUBY BRAXTON, Greenville, N. C.; DAVID S. BREECE, Raleigh, N. C.

Third Row: ELSIE BRENDLE, Bryson City, N. C.; MILDRED BRILEY, Robersonville, N. C.; AGNES BRITT, Clinton, N. C.; PATRICIA BROOKS, Greenville, N. C.; ADRIAN BROWN, Manteo, N. C.

Fourth Row: ALVA BROWN, Belcross, N. C.; EVELYN BRUMMITT, Kittrell, N. C.; ELIZABETH BRYAN, La Grange, N. C.; GERALDINE BULLUCK, Rocky Mount, N. C.; FRANCES BUNTING, Palmyra, N. C.



Dear Al
 Pessie, I
 who enjoyed
 making
 you. Hope
 to see you
 some this summer
 or you know we

JUNIORS

Eighth Row: ROBERT BURTON, Bethel, N. C.; ANNIE GRAY BYRD, Bailey, N. C.; LULA CAMERON, Cameron, N. C.; JOYCE CAMPBELL, Lucama, N. C.; L. C. CAPPS, JR., Jacksonville, N. C.

Second Row: FRANCES CASH, Wendell, N. C.; MAISIE CASTLEBURY, Apex, N. C.; ELIZABETH COPPEDGE, Greenville, N. C.; WISTA COVINGTON, Dillon, S. C.; ELEANORA CROMARTIE, Garland, N. C.

Third Row: MARY FRANCES CUTTS, Stovall, N. C.; HELEN DAVENPORT, Kinston, N. C.; KATHERINE DAVENPORT, Greenville, N. C.; LELA B. DAVENPORT, Roper, N. C.; WILLIAM A. DAVIDSON, Plymouth, N. C.

Fourth Row: DOROTHY DAVIS, Burgaw, N. C.; EVELYN DAVIS, Beaufort, N. C.; LOUISE EVELYN DAVIS, Fremont, N. C.; MATTIE DAVIS, Pikeville, N. C.; MABEL DEANS, Goldsboro, N. C.

are you,
 self this summer. I'll see you in Summer
 School, maybe some at over, Pat.



JUNIORS

First Row: MARY KATHRYN DOBSON, Beulaville, N. C.; JEROME DONALDSON, Metter, Ga.; BILL DUDASH, Massena, N. Y.; FLORENCE DUDLEY, Greenville, N. C.; NANCY DUNN, Scotland Neck, N. C.

Second Row: MARY ELIZABETH EAGLES, Pinetops, N. C.; JEANETTE EARLEY, Ahoskie, N. C.; EVELYN EARNHARDT, Durham, N. C.; NYMPHE EDGERTON, Kenly, N. C.; ESTELLE M. EDWARDS, Newport, N. C.

Third Row: JULIA WORTH EDWARDS, Tabor City, N. C.; MARY D. ELLIOTT, Edenton, N. C.; SARAH EVANS, St. Pauls, N. C.; BERLINE FAIRCLOTH, Roseboro, N. C.; SAMMIE FARLOW, Carthage, N. C.

Fourth Row: CHRISTINE FENTRESS, Knotts' Island, N. C.; HELEN FLOWERS, Goldsboro, N. C.; SUE FOY, Pollocksville, N. C.; CHARLEY J. FRAZZELLE, Richlands, N. C.; FLORENCE GADDY, Jacksonville, N. C.



JUNIORS

First Row: ANNIE ELIZA GARRIS, Ayden, N. C.; EDWENA GARRIS, Ayden, N. C.; PHILIP GARRIS, Greenville, N. C.; MARTHA GASKINS, New Bern, N. C.; NINA GATLING, Gates, N. C.

Second Row: IDA MARIA GEORGE, Comfort, N. C.; MYRA GODFREY, Jonesboro, N. C.; THERA GODWIN, Falcon, N. C.; ANNE SEVILLE GOOLSBY, Greenville, N. C.; FRANCES GULLEDGE, Raleigh, N. C.

Third Row: LORENE HAMRICK, Shelby, N. C.; ARTIS HARDEE, Greenville, N. C.; ERNESTINE HARDEE, Grimesland, N. C.; MARY FRANCES HARDY, Maury, N. C.; RUTH GLENN HARDY, La Grange, N. C.

Fourth Row: ELIZABETH H. HARRELL, Gates, N. C.; BELVA DARE HARRIS, Greenville, N. C.; MARCELIA E. HESS, Lancaster, Pa.; FLOYD HINTON, Rocky Mount, N. C.; MARTHA HOELL, Grimesland, N. C.



JUNIORS

First Row: ELIZABETH HOLLIDAY, Greenville, N. C.; MYRTLE HOPKINS, Plymouth, N. C.; ETHEL HOWIE, Monroe, N. C.; ALICE HUMPHRIES, Woodsdale, N. C.; CLARISSA HUMPHREY, Wilmington, N. C.

Second Row: KATHRYN HURST, Jacksonville, N. C.; BETSEY HUTCHINSON, Bladenboro, N. C.; JIM H. IPOCK, New Bern, N. C.; MARY FRANCES IRVIN, Shelby, N. C.; WILLIAM WARD JAMES, Winterville, N. C.

Third Row: HELEN BROWN JEFFERSON, Fountain, N. C.; INEZ JENNINGS, Halifax, Va.; LOUISE JONES, Pink Hill, N. C.; LEON JUSTICE, Jacksonville, N. C.; ANNIE LAURIE KEENE, Smithfield, N. C.

Fourth Row: HELEN KEMP, Louisburg, N. C.; JESSIE KENDRICK, Ellenboro, N. C.; ELOISE KENNEDY, Kerr, N. C.; BARBARA KEUZENKAMP, Greenville, N. C.; BETTY KEUZENKAMP, Greenville, N. C.



JUNIORS

First Row: HELEN KING, Gates, N. C.; EDNA KIRBY, Lucama, N. C.; MARY ESTHER KOONCE, Richlands, N. C.; MARGARET LAMB, Fort Barnwell, N. C.; JOANNA LANE, Tabor City, N. C.

Second Row: HELEN LANE, Dover, N. C.; MILDRED LANGLEY, Greenville, N. C.; THELMA LANGSTON, Rocky Point, N. C.; GEORGE LAUTARES, Greenville, N. C.; WILMA GRAY LEE, Dunn, N. C.

Third Row: MARY HINES LEONARD, Nashville, N. C.; EFFIE SENORA LEWIS, Farmville, N. C.; DOROTHY CLARK LEWIS, Fountain, N. C.; KATHLEEN K. LEWIS, Wilmington, N. C.; SARAH EDITH LINDLEY, Snow Camp, N. C.

Fourth Row: MARY LENORA LITTLE, Freeland, N. C.; WOODROW LONG, Leggetts, N. C.; INEZ LYDAY, Brevard, N. C.; ALBERT MANESS, Chadbourne, N. C.; REON MANESS, Hcmp, N. C.



JUNIORS

First Row: CARLIE MAE MANN, Lake Landing, N. C.; EDNA MARSHBURN, Clinton, N. C.; KELLY MARTIN, Conway, N. C.; ELIZABETH MASHBURN, Benson, N. C.; SALLY MARY MATHIAS, Gates, N. C.

Second Row: EVELYN MATTHEWS, Kipling, N. C.; ADDIE LEE MEADOR, Williamston, N. C.; ELIZABETH MEADOWS, Greenville, N. C.; ELIZABETH MEIGGS, Camden, N. C.; BILL MERNER, Durham, N. C.

Third Row: ELIZABETH MERRITT, Rosehill, N. C.; NELL MICHAEL, Mebane, N. C.; IRENE MITCHAM, Goldsboro, N. C.; BRUCE MODLIN, Jamesville, N. C.; EMILY MONTAGUE, Oxford, N. C.

Fourth Row: EDNA MONTGOMERY, Warronton, N. C.; GENEVA MOORE, Stokes, N. C.; MARGARET D. MOORE, Greenville, N. C.; NOVINE MOORE, Micro, N. C.; NANCY LEE MOORE, Greenville, N. C.



JUNIORS

First Row: RUTH MOORING, Snow Hill, N. C.; PEGGY MOSS, Stokes, N. C.; EVELYN MYRICK, Littleton, N. C.; MATT McBRAYER, Rutherfordton, N. C.; MARGARET MCDANIFL, Woodland, N. C.

Second Row: ELLEN MCINTYRE, Red Oak, N. C.; PATSY MCINTYRE, Red Oak, N. C.; ELIZABETH McLEMORE, Roseboro, N. C.; RACHEL MCPHERSON, Graham, N. C.; NORWOOD NORTH CUTT, Cary, N. C.

Third Row: JUANITA O'BRIEN, Stovall, N. C.; HAZEL VIRGINIA OWENS, Fountain, N. C.; MYRTIE PARNELL, Pikeville, N. C.; GEORGE PATTERSON, Farmville, N. C.; ELIZABETH PEARSALL, Wallace, N. C.

Fourth Row: ETHEL PHIFER, Peachland, N. C.; MARY ELIZABETH PHILLIPS, Fountain, N. C.; MATT PHILLIPS, Greenville, N. C.; ELIZABETH PILAND, Norfolk, Va.; LYDIA PINER, New Bern, N. C.



JUNIORS

First Row: LEEAH BLANCHE PITTMAN, Whitakers, N. C.; RUTH YOUNG POLLARD, Garner, N. C.; MAYBELLE POLLOCK, Pollocksville, N. C.; DOROTHY POTEAT, Marion, N. C.; ALICE POWELL, Clinton, N. C.

Second Row: ALICE M. PROCTOR, Rocky Mount, N. C.; MRS. SARA M. PROCTOR, Greenville, N. C.; THELMA RAYFORD, Newton Grove, N. C.; ALICE RICH, Wake Forest, N. C.; MADELINE RIDDICK, Hobbsville, N. C.

Third Row: DORIS ROBERTS, Shawboro, N. C.; LAURA ANN ROBINSON, Atlantic, N. C.; FRANCES ROEBUCK, Washington, N. C.; MELBA GRACE ROGERS, Williamston, N. C.; WALTER ROGERS, Wooddale, N. C.

Fourth Row: VINCENT ROMANO, Huntington, N. Y.; REBECCA ROSS, Aurora, N. C.; RAY SAINT-AMAND, Wilmington, N. C.; ERLENE H. SAWYER, Powells Point, N. C.; MAUDE SAWYER, Belcross, N. C.



JUNIORS

First Row: REBECCA SHANKS, Oxford, N. C.; RACHEL SLOAN, Calypso, N. C.; ETHEL MAE SMITH, Hubert, N. C.; GRACE SMITH, Fuquay Springs, N. C.; LERA SMITH, Vanceboro, N. C.

Second Row: MAVIS MARIE SMITH, Mebane, N. C.; RUBELLE SMITH, Winterville, N. C.; SARA LOU SMITH, Fairmont, N. C.; THEMISE SMITH, Deep Run, N. C.; EVELYN SNIPES, Ahsokie, N. C.

Third Row: HELEN SORRELL, Hubert, N. C.; MARGIE SPIVEY, Greenville, N. C.; HAZEL STARNES, Hickory, N. C.; MARGARET STATON, New London, N. C.; GRACY STEPHENSON, Halifax, N. C.

Fourth Row: RACHEL TEMPLETON, Union Grove, N. C.; HILDA TEW, Clinton, N. C.; SUSIE THARRINGTON, Warrenton, N. C.; JAMES J. THOMPSON, Goldsboro, N. C.; EILEEN TOMLINSON, Black Creek, N. C.



JUNIORS

First Row: ELIZABETH K. TOMLINSON, Black Creek, N. C.; ROSALIND TUCKER, Greenville, N. C.; EDNA M. TURNAGE, Greenville, N. C.; DOROTHY TURNER, Pink Hill, N. C.; NORMA LEE TYNDALL, Kinston, N. C.; VERNON TYSON, Greenville, N. C.

Second Row: HILDA ROSE UPCHURCH, Lillington, N. C.; ZORA WALLER, Kinston, N. C.; AGNES WATSON, Kenly, N. C.; VIRGINIA WELDON, Norlina, N. C.; HELEN WETHERINGTON, Clarks, N. C.; MABEL WILDER, Garner, N. C.

Third Row: ANNIE ALLEN WILKERSON, Roxboro, N. C.; ELLEN WILLIAMS, Pollocksville, N. C.; VIRGINIA WILLIAMS, Kinston, N. C.; LOIS WILLIAMSON, Kenansville, N. C.; HELEN WILLOUGHBY, Kelford, N. C.; ELIZABETH M. WILSON, Crossnore, N. C.

Fourth Row: NANCY FLEMING WINSTON, Youngsville, N. C.; DORIS WOODARD, Kenly, N. C.; MADELINE WOOLARD, Greenville, N. C.; MARY WOOLARD, Greenville, N. C.; JANE YONGUE, Brevard, N. C.; ADA ROSE YOW, Henderson, N. C.

SOPHOMORES



KUETEMEYER



WHITE



DeLOATCHE



KEITH

VERN KUETEMEYER*President*
MARGENETTE WHITE*Vice-President*
BRANTLEY DeLOATCHE*Secretary*
JESSIE KEITH*Treasurer*



SOPHOMORES

First Row: EUGENIA ABEYOUNIS, HOWARD ADAMS, THELMA ADAMS, FRANCES ALLEN, VIRGINIA ALLEN, BESSIE ANDERSON.

Second Row: MARY ARRINGTON, KATHLEEN ASBELL, MARGENETTE ASBELL, RUTH ASKEW, VIRGINIA ATKINSON, HOLTON AVERY.

Third Row: MILDRED AYCOCK, MARY T. BAILEY, MARTHA REID BAKER, ESTELLE BAKER, MARGIE BAKER, DELLA BARKLEY.

Fourth Row: KATHLEEN BARKLEY, ELSIE BARKER, ALDINE BARNHILL, JUANITA BASS, VOLENA BASS, KATRINA BAUM.

Fifth Row: BETTY BEAM, EUGENIA BECTON, NELL BEDDARD, RUSSELL BEDDARD, LUCILLE BEDFORD, AELINE BELCH.



SOPHOMORES

First Row: MYRTLE LEIGH BELCHE, LEOLA MAE BELL, MARJORIE BELL, MYRA BLOUNT, ALICE LEIGH BLOW, MELZA BOSTIC.

Second Row: HAZEL BOWEN, FRANCES BOYD, HAZEL BOYKIN, VERA BRADLEY, FRANK E. BRILEY, DOROTHY BRINKLEY.

Third Row: RUTH BRITT, KATHARINE BROWN, MARY ELIZABETH BROWN, MARY QUINN BROWN, WILBUR H. BROWN, MARGUERITE BROWNING.

Fourth Row: CATHERINE BRYANT, CLEO BURNEY, ELIZABETH BURNS, HELEN BUTNER, JOHN F. CARSON, NORMAN CARSON.

Fifth Row: MCCREE CARTER, RICHARD CHADWICK, RUTH CHANDLER, BLANCHE CHAPPELL, MARY THAD CHAPPELL, VERNON CHASON.



*Success
The success of our past
is our hope for the future
of our school.*

SOPHOMORES

First Row: DOROTHY CLEMENT, CECELIA COBB, ROSE COLLIE, ELMER M. COX, MILTON COX, SARAH ELIZABETH COX.

Second Row: THOMAS E. COX, CELIA BLANCHE DAIL, DOROTHY DALRYMPLE, MARY ELIZABETH DARDEN, NORMA DAVIS, RUTH DAVIS.

Third Row: MARY AGNES DEAL, DORIS DAWSON, JULIA DEAN, BRANTLEY DELOATCHE, ELIZABETH DICKENS, VIRGINIA O. DIXON.

Fourth Row: THERA YVONNE DOWNING, ROSE CARLTON DUNN, DORIS DUVAL, LILLIE OWENS EASOM, CLARISSA BROOKS EDWARDS, IRENE ELLINGTON.

Fifth Row: FREDERICK ERVIN, WILLIE EVANS, RACHEL JOHNSON FARRIOR, PECOLIA FISHER, VISTA FLOYD, KATE FOLEY.



SOPHOMORES

First Row: ELIZABETH FORREST, MARY ELIZABETH FOUTZ, MERWIN FRAZELLE, LILLIAN WHITE GARDNER, MARJORIE GARDNER, CAMILLE GASKINS.

Second Row: ELIZABETH GATES, CAROLYN GATLING, MARGARET GATLING, ROSEBUD GAYLORD, HILDA GILLIKIN, FRANCES GILLIKIN.

Third Row: SARA GORHAM, JESSE GRAY, CARLOTTA GRUSSNER, MARIE GUPTON, JUSTINE GURLEY, DOROTHY GUPTON.

Fourth Row: EDITH GUTHRIE, RETA GUY, ROBERTA HALL, DOROTHY MAE HARDEE, KATHERINE HARDISON, BRUCE HARDY.

Fifth Row: LILLIAN HARRIS, EDITH VARINA HARRIS, MARY LOU HARRIS, LILL HART, SPENCER HATLEY, GEORGE HEAFNER.



SOPHOMORES

First Row: HICKS HENDERSON, DORIS HERRING, EDNA HERRING, ROBERT HOLLAR, MATTIE LAWRENCE HOLLIDAY, KATIE BELLE HONEYCUTT.

Second Row: MARY D. HORNE, LOIS HUGHES, MARTHA REED HUTCHINSON, LUDA MAE JENKINS, HELEN MARGARET JENKINS, ALICE JOHNSON.

Third Row: EMILY JOHNSON, ETHEL JOHNSON, NORENE JOHNSON, SHIRLEY JOHNSON, DAISY RAYE JONES, JESSIE KEITH.

Fourth Row: MABEL KENNEDY, FERDINAND B. KERR, EVELYN KILPATRICK, IDA RUTH KNOWLES, VERN KUETEMEYER, OPHELIA LANCASTER.

Fifth Row: CLARA E. LAUGHINGHOUSE, HARRIETTE LAWRENCE, AUDREY LEE, JULIA FULLER LEE, BETTY LEEPER, REBECCA LEWIS.



SOPHOMORES

First Row: CHARLIE H. LITTLE, MILDRED LIVERMAN, CHARLES L. MARKS, HARRIET MARSHBURN, LURA ALICE MASON, BETH MATTHEWS.

Second Row: EDITH MATTHEWS, LOREEN MAYO, NORMAN MAYO, WILEY S. MAYO, EDNA MITCHELL, ERLENE MITCHELL.

Third Row: PAULINE MITCHELL, LOUISE MIZELLE, WALTER MORITZ, ORVAL MORTON, RUTH MOYE, MARY MULLEN.

Fourth Row: MARGARET WHITE MUNDEN, EMILY MURPHY, ROBERT MUSSELWHITE, LORRAINE MYERS, GRACE McCLEES, LOIS McCORMICK.

Fifth Row: DOROTHY McDANIEL, LOONIS McGLOHON, MALISHA McLAMB, VIVIAN ELIZABETH McLAWHON, ELIZABETH NOE, RUTH M. NOWARAH.



SOPHOMORES

First Row: GERALDINE OLIVER, ZELDA O'NEAL, GERTRUDE PARKER, KATE BRYAN PARKER, MARTHA PARROTT, ELIZABETH SPRUILL PARTIN.

Second Row: JANIE REID PHILLIPS, EDNA PIERCE, ELIZABETH PIERCE, DOROTHY POWELL, EDITH POWELL, ADNA LEE PRIDGEN.

Third Row: LUCILLE PRIVETTE, FRANCES PRIVOTT, MARY PRIVOTT, WILDA ROYALL, HARRY S. RIDDICK, GERALDINE SANDERS.

Fourth Row: DORIS SATTERWHITE, EMMY LOU SCALES, GLADYS SCULL, VIRGINIA DARE SEEGARS, MARY GRACIE SIVERTSEN, ALBERTA SMITH.

Fifth Row: LENA MAE SMITH, MARION L. SMITH, MAUD E. EMILY SMITH, NINA E. SMITH, FRANCES SUTHERLAND, MILDRED SPANGLER.



SOPHOMORES

First Row: ROXIE SPEAR, LEON RAY SPARROW, DOROTHY HILL SPENCE, VIRGINIA SPENCER, C. KENNETH SPRUILL, ELIZABETH STACEY.

Second Row: AMBROSE RICHARD STANKUS, AUDREY STANLEY, JOE STATON, LAURA STRICKLAND, HULDA STRICKLAND, MARGARET TART.

Third Row: HAROLD K. TAYLOR, HELEN TAYLOR, HELEN LOUISE TAYLOR, ESTALINE TEW, ELIZABETH THOMASSON, JESSIE THOMPSON.

Fourth Row: CHRISTINE TRIPPE, ANNIE RUTH TUCKER, WALTER TUCKER, LOYS TURNAGE, ELIZABETH WADE, KENNETH D. WALKER.

Fifth Row: DORIS MARIE WALLACE, HELEN C. WARD, MYRTLE WARD, MADELINE WARREN, LALLAH B. WATTS, NORMA WELLONS.



SOPHOMORES

First Row: JEAN WENDT, GEORGE L. WEST, MARTHA ELEANOR WHELESS, AMY WHITE, CAMILLA WHITE.

Second Row: ELVA WHITE, MARY WHITE, MARGIE WHITE, LULA MAE WHITEHURST, JAMES WHITFIELD.

Third Row: FRANCES WHITLEY, VIRGINIA WHITLEY, DOROTHY WIGGINS, JANE WILLIAMS, MARGARET WISE.

Fourth Row: HELEN WOLFE, MARGARET WOOD, ATLAS W. WOOTEN, LUNA WORTHINGTON, RUTH WRIGHT, DOROTHY WYCKOFF.

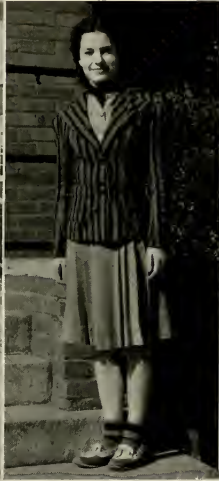
FRESHMEN



COX



DAVIS



JOHNSON



CASTEEN

DAVID COX*President*
ESTELLE DAVIS*Vice-President*
MARY TYSON JOHNSON*Secretary*
JOHN L. CASTEEN*Treasurer*

Always remember
you and say you most
proudly. Love
Mary L.



FRESHMEN

First Row: EDITH ALLEN, MARY L. ARNOLD, MITCHELL AVERY, MILDRED LEE AYCOCK, ALENE BAILEY, ERNESTINE BAKER, DOROTHY JANE BALLENTINE, MARY ELIZABETH BANKS, JONNIE FAYE BARNES.

Second Row: BEATRICE BARNETTE, CATHERINE BARNHILL, BILL BASDEN, RUBY ELIZABETH BATCHELOR, FAY BATEMAN, ESTELLE BATTEN, GLADYS D. BEARD, ALICE BELL, ANNETTE BELL.

Third Row: ALMA LOUISE BENNETT, MILDRED BEVERLY, ELIZABETH LEE BISHOP, ELLA RUTH BIZZELL, MARY ALICE BLACKHAM, MARLOW F. BOSTIC, DOROTHY BOSWELL, MARIE BRANCH, PEARL BRAVALDO.

Fourth Row: DORIS BRITT, EVELYN LOUISE BRETT, MARTHA BROOKS, RACHEL BROOKS, DOROTHY BROOME, MARGARET BROUGH-TON, ANNA LEA BROWN, DORIS BROWN, HELEN JOSEPHINE BROWN.

Fifth Row: PAUL E. BROWN, CAROL HARRY BRYAN, JAMES BULLOCK, NANCY GRAY BURDEN, WILLIAM MILLER BURKS, LOIS M. CAIN, DOROTHY CAINE, ELLA BLAND CALHOUN, ZALIA CAROWAN.



FRESHMEN

First Row: MARGARET CASH, J. L. CASTEEN, EVELYN CAVANAUGH, SARA CAVANAUGH, CATHFRINE CHAPPELL, HAZEL AILENE CLARKE, VIRGINIA CLARKE, ETTA CLOWE, EMILY ANN COLLINS.

Second Row: EVELYN CONYERS, FLORENCE COOKE, TOMMIE LOU CORBITT, CHARLOTTE RUTH COREY, V. T. COREY, MINNIE LEORA COUNCIL, FRANCES COWARD, DAVID MARSHALL COX, LAVERNE COX.

Third Row: MARGARET COX, SAMUEL HOWARD CRANDELL, SUE CRENSHAW, MIRIAM CREW, MARGARET CROCKER FRISH, CLELLIE MAE CROOM, JANE CURRIN, NANCY COCKE DARDEN, ELIZABETH JANE DAVIS.

Fourth Row: ESTELLE DAVIS, ELIZABETH DAWSON, ANNIE LAURIE DENNING, FLORENCE DENNING, MILDRED DEWAR, NANCY DICKSON, LOUISE DOZIER, JACK DULONG, JOYCE DUNHAM.

Fifth Row: MARY ELIZABETH EAKES, ZULA ANN EATMAN, GRACE EDWARDS, MARTHA JOY EDWARDS, PEARL EDWARDS, VIRGINIA ELAM, FRANCES ELLIOTT, VIRGINIA ENGLISH, ADMINTA EURE.



FRESHMEN

*Basils
I hope
you'll
enjoy
your
year
at
school
I'll
be
here
to
help
you
if
you
need
it*

- First Row:* ESTHER EVANS, FAYE EVERETTE, R. O. EVERETT, CLIO FARLESS, MARY FIELD, MARGARET FEULEY, ELLA NELL FLETCHER, FLORENCE FLOYD, ELSIE FORD.
- Second Row:* MARY LONG FORD, OLA H. FORREST, SOPHIA GUY FUZZELLE, CHRISTINE GARDNER, DOROTHY GARNER, MARY BECTON GASKINS, PRISCILLA GHOLSON, FRANCES GILBERT, MAE GILLIAM.
- Third Row:* JOSEPHINE GODDARD, AGATHA GOLDEN, GWEN GOODSON, ELNORA GRAHAM, RUBY GRANT, MARGARET GRAY, LOIS GREENE, AGNES GRIFFIN, CAROLYN GRIFFIN.
- Fourth Row:* EVAN GRIFFIN, ELEANOR GREY GURKINS, FLORINE GUY, NAN GUY, RUTH HALL, ANNETTE HANDLEY, CAROLINE HARPER, ELIZABETH HARRIS, JEAN HARRIS.
- Fifth Row:* WILLIAM HARRIS, ELSIE HATSELL, JOE HATEM, MARY HAWKS, CROFFARD HEDSPETH, BEATRICE HELMS, EUNICE HERRING, CAROLINE HINES, MARGARET HERRANT.



FRESHMEN

First Row: EDITH HODGES, NORMA HODGES, MARIAN HOGGARD, CHARLES HORNE, LORAINÉ HORNE, PEARL HOUSE, LUCILLE HOWELL, BESSIE FAY HUNT, VIOLET HOPSON.

Second Row: SARAH LOUISE INGRAM, GERALDINE JACKSON, ANNIE MAE JARWAN, CLAIRE JENKINS, EDNA EARLE JENKINS, LOUISE JENNINGS, LOIS JERNIGAN, LOUISE JERNIGAN, ELIZABETH JILEOTT.

Third Row: ISABELLE JOHNSON, JIMMIE JOHNSON, LINA PEARL JOHNSON, LOVIC JOHNSON, MARGARET JOHNSON, MARY TYSON JOHNSON, TRUMAN JOHNSON, JOHN JOHNSTON, CATHERINE JONES.

Fourth Row: GRACE JONES, MARJORIE JONES, JEAN FORBES KELLY, JOHNNYE BROWN KENNEDY, KATIE GEORGE KENNEDY, FRANKLIN D. KIZES, KATHERINE KYZER, DORIS LAMM, NANCY LOU LANCASTER.

Fifth Row: MADGE LANE, JEWEL LANGLEY, IRIS LANGSTON, FLUDA RAE LASSITER, NELLIE AUDRY LEE, FRANCES LEGGETT, OLA LEA LILLEY, MARY LOUISE LINDSAY, JAMES A. LITTLE.



*... you've got what it
takes to be a
... as the summer
... always.*

FRESHMEN

First Row: NAN LOVELACE, JAMES ALTON MANNING, HILDA MARTIN, RACHEL MARTIN, DOROTHINE MASSEY, HELEN MASSEY, NANCY ARLINE MERCER, WINIFRED MERCER, AILINE MEWBORN.

Second Row: CAROLINE MILES, MILDRED MITCHELL, G. CONNOR MOORE, SARAH MOORE, MARY MORRIS, ELISE MORRISON, MARGUERITE MOYE, REBECCA MOYE, KATHLEEN MULLEN.

Third Row: JANE MURRAY, NELL McCULLEN, MARJORIE McDANIEL, VIRGINIA CRAIG McGEE, MABEL McLAWHORN, REID McLAWHORN, LUCILLE NELMS, ZULA NEWMAN, EVELYN NICHOLSON.

Fourth Row: RUTH CAROL NIX, NELL NYE, MERLE OUTLAW, MILDRED OWEN, MILDRED OWENS, ELIZABETH PAGE, ALAN O. PARKER, ELIZABETH PARKER, ESTHER MAE PARKER.

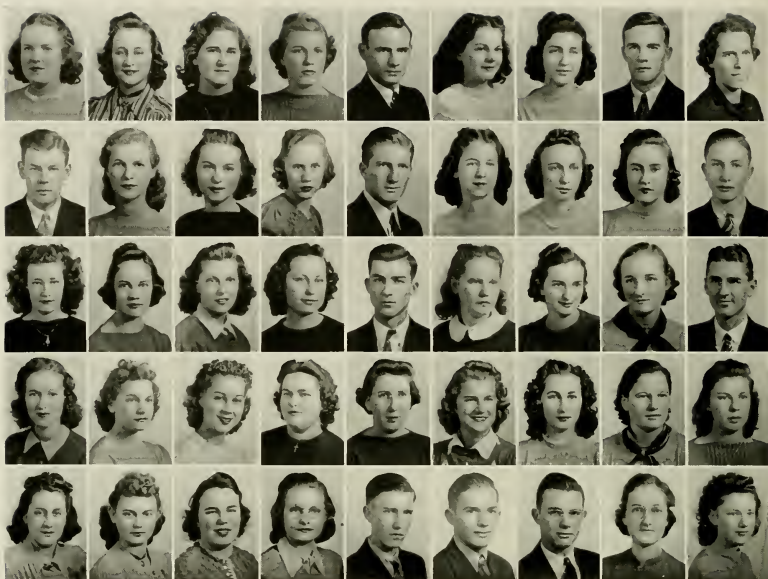
Fifth Row: MARY JOHN PARKER, JOYE PARNELL, MAUDE R. PARRISH, HELEN PEACOCK, DALLAS PEEL, JEAN PARIS PHILLIPS, VERNELLE PIERCE, ELEANOR PITTMAN, MARY DALE PITTS.



*Best wish
to a successful
year!
Wynne
Miss.*

FRESHMEN

- First Row:* IRVING POLIAKOFF, MARGARET POLLOCK, SARA POTTER, HARRIET SIMPSON POWERS, JEAN POWELL, ANNE POYTHRESS, MAY PRICE, OVELIA PRICE, MINNIE LORRAINE PRITCHARD.
- Second Row:* D. E. PROPST, MINNIE LILLIAN QUINN, MARGIE RAYNOR, ADELAIDE READE, MARGARET REED, BEATRICE REYNOLDS, NANCY LOUISE RICHARDS, MAGGIE PEARL RIVENBARK, LOMBE H. RIVES.
- Third Row:* ELEANOR RIVES, LILLIAN ROBBINS, EDITH WARD ROEBUCK, MOZELLE ROGERS, MYRTLE ROGERS, HAZEL C. ROPER, RANDOLPH ROPER, GRACE ROSS, JULIA DEANE SANDLIN.
- Fourth Row:* BETTY WARREN SAVAGE, FRANCES SEARS, HELEN SCARBOROUGH, MARJORIE SELBY, MARTHA SELBY, JESSIE SESSOMS, CHARLOTTE SHEARIN, MARIE SHYVER, METSEL SIMMONS.
- Fifth Row:* MARY SMITH, CLARE SPENCE, HELEN SPENCE, RALPH SPENCER, MARGARET E. SPIRES, INEZ STEPHENSON, LUCILE STEPHENSON, RACHEL STRICKLAND, JUNIUS SURLS, JR.



FRESHMEN

First Row: MARGARET TADLOCK, VIOLET A. TALBERT, GRACE TAYLOR, LOUISE TEW, JAMES THOMAS, SARAH THOMPSON, RUTH M. TUCKER, WAYLAN TUCKER, HATTIE TURNER.

Second Row: W. VERNON TYSON, HALLIE VERNA UPCHURCH, BESS USRY, FRANCES VINSON, PAUL WALDROP, IRIS WALKER, NELLIE WALKER, HAZEL WALL, NORWOOD WALL.

Third Row: MARY LOUISE WALLACE, MATTIE LEE WARD, VIRGIL WARD, LUCY WARREN, HERBERT WARRICK, MARY JANE WATERS, MILDRED WATKINS, SARA WATKINS, FREEMAN WATKINS.

Fourth Row: MARJORIE WEBB, FRANCES WEBSTER, ELIZABETH WEEKS, JOSEPHINE WEEKS, MAYME WEEKS, LORRAYNE WEST, AUDREY WHITE, ETHEL WHITE, HAZEL WHITE.

Fifth Row: LUTHIA WHITE, MARGARET WHITE, REID WHITE, KATHLEEN WHITEHURST, DALLIS WHITFORD, ROBERT B. WHITLEY, NORMAN WILKERSON, BLANCHE EUGENIA WILLIAMS, LOIS WILLIAMS.

*You are a nice
sweet girl and
I think a lot of
you I give you
love*



FRESHMEN

MARY FRANCES WILLIAMS, MILDRED WINDLEY, GENEVA WINSTEAD, LAURA FAYE WOOD, RACHEL WOODARD, KENNETH ALTON WOOLARD, JOHN BRYCE WORLEY, LUCILE WRIGHT, MARY MOSS YOUNG, ARCHIBALD C. YOW, JR.

CAMPUS LIFE

As usual, in this section of the yearbook, we have attempted to include snapshots depicting life on our campus during the past year. We wish to thank the large number of students who have helped us in compiling this section.



AT E. C. T. C.

Highlighting this page is the picture at the right of our swing band in action—in, believe it or not, the student council room. Notice also the industrious girls doing industrial work in the Industrial Arts Department.



CAMPUS LIFE

The top picture at the left is of that newly organized bunch of intellectuals that calls itself the commerce sorority, under the alias of some Greek name. As the pictures are evidence, we are proud of our snow (no connection to the commerce sorority).



AT E. C. T. C.

More campus scenery—outdoor fire place at the lake; bird bath and inhabitant; the campus fort (i.e. the eight-incher), and its marksman; clansmen; more snow; Romeo and Broughton.



CAMPUS LIFE

Here we have hikers to the lake (one-tenth milers), fire-escapers, another snow-maiden, posturesque band members, loafers, foot-scratchers, and what not.



AT E. C. T. C.

It takes all kinds to fill a page, as this one is easily evidence. The staff was unable to find out to whom the infant belonged, but since it bore resemblance to numerous people, we decided it deserved a place in the book along with the other freshmen.



ACTIVITIES



WOMEN'S STUDENT



OFFICERS

JUANITA ETHERIDGE
President

DORIS BLALOCK
Vice-President

HARRIET MARSHBURN
Secretary

SARA GORHAM
Treasurer



The Women's Student Government Association is an organization to which all women students of the college automatically belong. The purpose of this organization is to develop student honor and self-control, and to promote high ideals and a sense of responsibility among the students of the college.

GOVERNMENT ASSOCIATION

Contacts with other campuses have been made through delegates who attended the National Student Federation Congress at the University of Minnesota, at Minneapolis; the Southern Inter-Collegiate Association at Shorter College, Rome, Georgia; the North Carolina Federation of Students at the University of North Carolina; and the Southern Conference at New Orleans, Louisiana.



First Row: IDA RUTH KNOWLES, IRIS DAVIS, MILLIE GRAY DUPREE, MAMIE LEE BOYD.

Second Row: REBECCA SHANKS, BETTY BLANCHARD, WILDA ROYALL, ANNA LAURIE BEALE.

Third Row: DORIS BURNEY, IDA FARRIOR DAVIS, HAZEL OWENS.

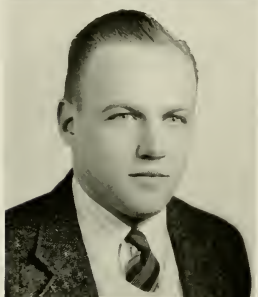
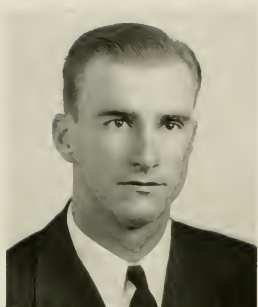
THE MEN'S STUDENT

OFFICERS

WILLIAM SHELTON *President*

WALTER ROGERS *Vice-President*

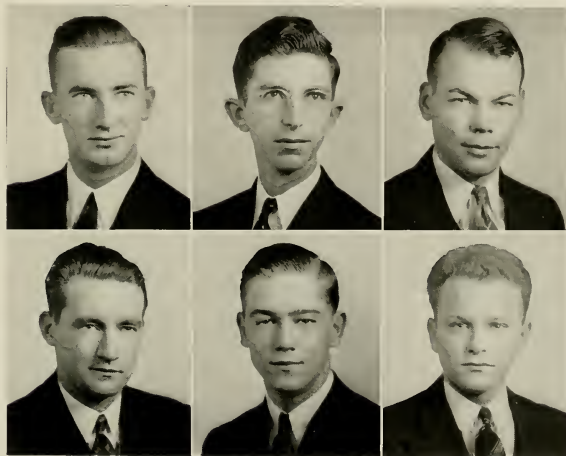
JAMES WHITFIELD *Secretary-Treasurer*



The Council of the Men's Student Government Association has strived diligently this year to promote all objectives in the interest of the men's student body. Acting under the authority of power vested in this body by men students, the Council undertook the task of revising the old constitution of the Men's Student Government Association. A United States flag was purchased from its appropriation, and it is flown daily on the front campus.

GOVERNMENT ASSOCIATION

The men students on the campus are still gaining in number, and with the growth of the Men's Student Body, the council that guides it must also grow. Higher ideals of democracy, wisdom, and fairness are all symbols of growth in a student body, and these, carefully handled, can be the mainstay of student government.



VANCE CHADWICK

EMMETT SAWYER

JEROME DONALDSON

BILL MERNER

WALTER TUCKER

WALTER MORITZ

YOUNG WOMEN'S

OFFICERS

SARAH ANN MAXWELL.....	<i>President</i>
ANNIE ALLEN WILKERSON.....	<i>Vice-President</i>
VIRGINIA WHITLEY.....	<i>Secretary</i>
DORIS BLALOCK.....	<i>Treasurer</i>



Through its Sunday and Friday evening vesper services, the Y. W. C. A. this year has attempted to realize its purpose—to make for its members a full and creative life through a growing knowledge of God. Among the outstanding speakers at these services have been Mrs. Mildred Morgan, University of Iowa; Dr. Hornell Hart, Duke University; and Madame Sheu-Riesz of Chapel Hill, N. C.

Deputation teams from Meredith College and North Carolina State have contributed to our programs, while we, in turn, have sent representatives to take part in their religious activities. Candle-

CHRISTIAN ASSOCIATION

lighting services have helped make our organization more inspirational and more beautiful for the student body.

Delegates from the association have attended all conferences of the Student Christian Movement of the state and, in the spring, delegates attended the leadership conference held at Blue Ridge, N. C.

Cabinet members pictured below are:

First Row: REBECCA ROSS, NELL BREEDLOVE, CELIA B. DAIL, AND MARGARET LAWRENCE.

Second Row: WILDA ROYALL, ORA MCHAN, SARA GORHAM, AND LUCY ANN BARROW.



*Bessie says you're a certainly a capable girl and
I'm so glad you consented to us on this
point. Don't work too hard this summer. Jack
Ways.
Love
Bessie*

*more, I'm looking forward to
being on Cabinet with you next year.
Will see you next Fall Term. Always,
Wilda*

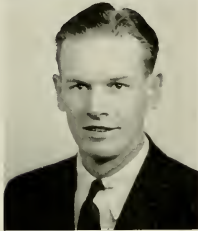
*Bessie, what in this world would I have done
without you!! in winter!! in winter!!
I'm so glad you consented to us on this
point. Don't work too hard this summer. Jack
Ways.*

YOUNG MEN'S

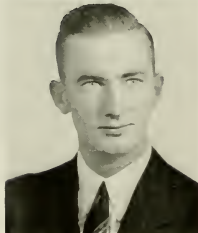
OFFICERS



EMMETT SAWYER *President*



HOWARD DRAPER *Vice-President*



VANCE CHADWICK *Secretary*



BRANTLEY DELOATCHE *Treasurer*



The Y. M. C. A. was organized in the spring of 1939. It has for its purpose the realization of a full and creative life through a growing knowledge of God. The Y. M. and Y. W. have cooperated in bringing about this purpose through vesper services. Among the outstanding speakers of the year were Mrs. Mildred Morgan, who spoke on men and women relations, and Mr. Wiley Critz, Southeastern Y. M. C. A. secretary.

The organization is a member of the Inter-racial Group of the Y. M. and Y. W. C. A.'s of the State. Last summer the "Y" sent two delegates to the Southeastern Regional Conference at

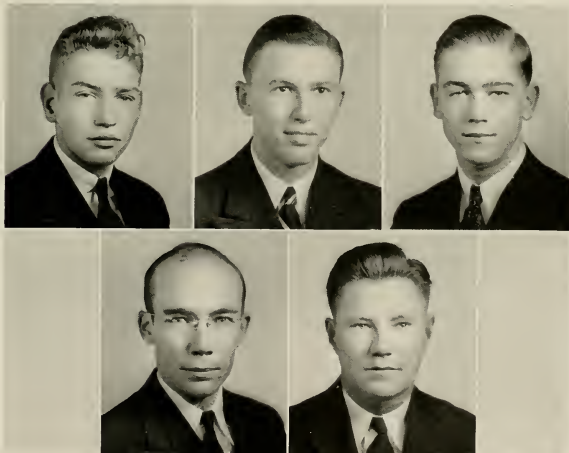
CHRISTIAN ASSOCIATION

Blue Ridge. We have also taken part in the State "Y" conferences in Raleigh and Durham this year. One of the outstanding entertainments was a square dance given in the fall. It is the hope of those who have been its founders, that our "Y" will steadily push forward, fulfilling its purpose, until every boy on our campus has been reached.

Cabinet members pictured below are:

First Row: JOHN DAVID BRIDGERS, ALTON PAYNE, WALTER TUCKER.

Second Row: JOE BIGGS, GILBERT BRITT.





JUNIOR "Y" CABINET



JOYCE DUNHAM
Chairman

The Junior "Y" Cabinet, as a co-worker with the Senior "Y" Cabinet, has played an important part in the Young Women's Christian Association on our campus. They have helped the success of this organization by participating in Friday and Sunday evening vespers, and actively attending morning watch. Their success is due largely to the chairman, and to Margaret Lawrence, cabinet adviser.



SCIENCE CLUB

The Science Club during the years 1939-40 has made much progress through the cooperation of its officers, members and advisors. The club has sponsored a variety of interesting programs given by students and outside speakers. Interest has been created in the study of Science Museums. During the spring term the club plans to do actual museum work. The annual club trip will complete the year's program.

The aim and purpose of the Science Club is to inspire science students and to stimulate in them a desire for a deeper, more meaningful study, and to challenge them to become more conscious of the scientific world.



AGNES WOOD
President

with next year and years to come.
lots o' love,
Mary E. Deegan



VERSE SPEAKING CHOIR



MISS MARY GREENE
Director

The Verse Speaking Choir is an organization three years old. Though identified with the English Club, it draws its membership from the entire student body, and since its beginning has had about seventy students actively interested in its work. Programs have been given for the English Club, for chapel and Y. W. C. A. exercises, and for the Third Street and the Greenville High Schools.



ALUMNI DAUGHTERS and SONS of E.C.T.C.

The purpose of the Alumni Daughters and Sons of East Carolina Teachers College is to develop loyalty, to promote a closer feeling of friendship among the sons and daughters of the alumni, and to preserve the memory of the students of the past.

The main event of the year was the tea given by the club for all alumni who returned for Commencement.



ANITA DAUGHTRIDGE
President



ENGLISH CLUB



MATTIE LEE JACKSON
President

The English Club has had entertaining and instructive monthly programs throughout this college year. The club, at the invitation of the Poe Society, was co-sponsor in bringing to our campus Miss F. Meredith Dietz, Editor of *The Southern Literary Messenger*. It organized and sponsors the Verse-Speaking Choir, under the leadership of Miss Mary Greene. Other groups of members are working on dramatics and creative writing.

The well-equipped club laboratory is a constant help to the English majors. Among the most important parts of the equipment, other than books, are three large filing cabinets of clippings and pictures, a duplicator, projector, and a recording machine.



MATHEMATICS CLUB

The Mathematics Club, with the help of its advisors, Miss Maria D. Graham, Miss Louise Williams, and Miss Elizabeth England, a newcomer to our department, has completed another successful year at East Carolina Teachers College. Our aim for more student programs and better attendance, has been fulfilled. The purposes of the club, which are: to appreciate the wonder and greatness of mathematics and how it has come to be what it is today, as well as, to explore the recreational side of life, have been carried out in the programs under the direction of the Vice-President, Julius Abernathy.



RUTH GLENN HARDY
President



HOME ECONOMICS CLUB



CAMILLE B. CLARKE
President

The Home Economics Club has as its motto: "Serving our community, our schools and our families". From this motto came the club's purpose: To develop personality, leadership, initiative, and poise. During the year outstanding speakers have been: Mrs. Stella R. Cusick, assistant Farm Administrator from Raleigh, who spoke of Farm Security work in North Carolina; Miss Mamie E. Jenkins of the college faculty, who spoke on her trip to Europe; and Mrs. Adelaide E. Bloxton of the Home Economics faculty who spoke on the early history and significance of Williamsburg.

A club bulletin was edited and sent to some of the recent alumnae of the club. Delegates were sent to the North Carolina Association of Student Home Economics Clubs at Queens-Chicora College, Charlotte. Agnes Watson, one of our members was chosen state president. The 1940 meeting of this association will be held at East Carolina Teachers College November 15-16.



ASSOCIATION for CHILDHOOD EDUCATION

"The purpose of this organization shall be to gather and disseminate knowledge of the movement for the education of young children; to bring into active cooperation all childhood education interests, including parent education; in nursery school, kindergarten and primary grades, and to raise the standard of the professional training for teachers and leaders in this field."

ARTICLE II, A. C. E. CONSTITUTION

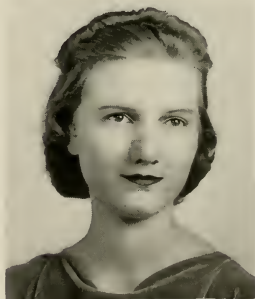
The East Carolina Teachers College Association for Childhood Education is a student branch of the state and national organization. Elementary majors and others who are interested in early childhood education are eligible for membership.

Studio group activities, outstanding speakers, and informal socials—all of these—provide opportunity for growth, both professionally and socially.

Among the speakers during the year was Dr. Hornell Hart, Professor of Social Ethics at Duke University, who was brought to our campus by the A. C. E., with the co-sponsorship of the Y. W. C. A.

This student branch was selected to edit the first North Carolina Branch News Bulletin, which was distributed among the fifteen state branches this year.

The following compose the executive board for the ninety-seven members: Mary Lou Butner, President; Ada Rose Yow, Vice-President; Page Davis, Secretary-Treasurer; Anna M. Taylor, Publications Representative; Mary Agnes Deal, Reporter; Mary Frances Hardy, Hazel Owens, Katrine Collier.



MARY LOU BUTNER
President



COMMERCE CLUB



THADYS JOHNSON
President

The Commerce Club has made its aim this year the increasing of interest in professional work and teaching.

At the regular monthly meetings, programs which will give some insight into business conditions, explain what the business world expects of those who enter this field, and how the commercial teacher can prepare others to meet these needs are presented. They have included social as well as educational entertainment.

One of the main projects for this year has been collecting articles of commercial interest for a museum in the Commercial Department.

The Club has also been active in organizing the Zeta Delta Chapter of Alpha Iota Sorority—an international honorary business sorority—on the campus. This chapter was officially installed on March 30 at an installation banquet. The Zeta Delta has twenty-four charter members and with Miss Velma Lowe and Miss Lena C. Ellis as sponsors great things are expected of this organization in the future. A group picture of the sorority appears in the snapshot section of this volume.



SIGMA PI ALPHA

Phi Sigma Chapter

Organized in 1925 under the name "Le Cercle Francais," the French Club of East Carolina Teachers College began its work with the purpose of encouraging the study of French, and fostering and developing a spirit of friendship among its members. Later the club adopted the name "Phi Sigma."

Last year we joined the Sigma Pi Alpha, national honor fraternity for students of foreign languages, and we have had a big part in its work this year. Professor R. C. Deal, head of the French department was elected National President of the fraternity for this year, and we also had the honor of being host to the National Congress which met on our campus April 20, 1940.

Members of the organization have enjoyed many social hours, including a weiner roast at Mr. and Mrs. Deal's.



ANNIE HART BOONE
President



Top Row: DR. BEECHER FLANAGAN, DR. HUBERT C. HAYNES, DR. HERBERT REBARKER—*Honorary Members:* VANCE CHADWICK, HOWARD DRAPER, EMMETT SAWYER, ALTON PAYNE.

Middle Row: JOHN DAVID BRIDGERS, CHARLES HARRIS, BILL SHELTON, WALTER ROGERS, LINDSAY W. WHICHARD, HOMER PARKER, JAMES WHITFIELD.

Bottom Row: ROBERT BREWER, WALTER MORITZ, EUGENE CARSON, WALTER TUCKER, JOHN CARSON, VERN KUETEMEYER, HARVEY DEAL.

Not Photographed: SPENCER HATLEY, TOM COX, ORVAL MORTON, ARTIS HARDEE.

PHI SIGMA PI

VANCE CHADWICK.....	<i>President</i>
HOWARD DRAPER.....	<i>Vice-President</i>
EMMETT SAWYER.....	<i>Secretary</i>
ALTON PAYNE.....	<i>Treasurer</i>
CHARLES HARRIS.....	<i>Sergeant-at-Arms</i>

The Phi Sigma Pi, national honorary educational fraternity, has completed another milestone in educational progressiveness, and in campus activities for 1939-40.

Among the principal undertakings of the fraternity this year were the annual carnival; the presentation of "Peck vs. Peck", a courtroom farce in one act, and the Founders' Day program on May 11.

The fraternity is composed of members who strive to promote a feeling of brotherhood and use the light of knowledge as their guiding star.

PUBLICATIONS BOARD



JUANITA ETHERIDGE
Chairman

This clandestine committee, little-known and less cared about, herewith betrays to the public its deep and dark secrets in the form of purpose and function. It certifies eligibles for publications offices, and is responsible, no more, no less, for the actions of those two bodies—*The Teco Echo*, and THE TECOAN. Latest to join the ranks of the scribblers and photo-snappers is the *Pieces of Eight*, a humor-literary magazine, or vice-versa. Although the magazine isn't responsible for until next year, it is already a member of the board in body and spirit.

First Row: HARVEY DEAL, PRUE NEWBY, MARY HELEN GULLEDGE, MR. J. B. CUMMINGS, DR. R. J. SLAY.
Second Row: DOROTHY HOLLAR, HELEN FLANAGAN, LUCILLE JOHNSON, DR. BEECHER FLANAGAN, MISS LOIS GRIGSBY.





DEAN C. TABOR
Director

COLLEGE BAND

Officers

ORVAL MORTON	<i>President</i>
VERNON KUETEMEYER	<i>Vice-President</i>
VIRGINIA WILLIAMS	<i>Secretary</i>
VINCENT F. ROMANO	<i>Librarian</i>
HICKS HENDERSON	<i>Sergeant-at-Arms</i>

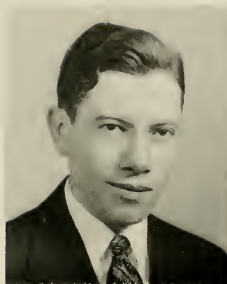
The East Carolina Teachers College band, organized during the winter quarter of 1938, is now beginning its third year of progress. The band, under the direction of Mr. Dean Tabor, has grown to a present membership of fifty-five. Officers were

chosen for the first time this year. This organization has aroused much enthusiasm among the students by playing at the sports events, special programs on the campus, and parades. We are proud of the development and interest shown in our band.



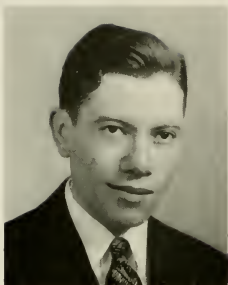
ORCHESTRA

While the orchestra of East Carolina Teachers College has been organized as an indispensable unit for prospective music teachers in a state whose strides in the field of music during the last few years have been immense, it still provides an enjoyable as well as a profitable source of activity for college students and teachers as well. It has fostered the love of good music during this year more than ever before through playing for chapel programs, plays, and various other functions on the campus. In this progressive institution, it is truly the best orchestra we have yet had.



A. L. DITTMER
Director





A. L. DITTMER
Director

MEN'S GLEE CLUB

The joy of singing in harmony is especially enhanced by the association of comradeship men find in such organizations as this. United in presenting the music to be rendered, these men have felt the thrill of musical achievement on numerous occasions on and off the campus during the past year.

Pictured below are:

First Row: RUSSELL BEDDAED, J. L. CASTEEN, VERN KUETEMEYER, HICKS HENDERSON, AND ROBERT MUSSELWHITE.

Second Row: CROFFORD HEDSPETH, accompanist, ED HARRIS, HOLTON AVERY, SPENCER HATLEY, NORMAN WILKERSON, AND MR. DITTMER.

Third Row: VINCENT F. ROMANO, ARCH YOW, WILLIAM BASDEN, AND JOHN DAVID BRIDGERS.

Members Not Photographed Are: SAM BASS, SAMUEL CRANDALL, OLA FORREST, GEORGE HEAFNER, FERDINAND KERR, CHARLES LITTLE, ALTON PAYNE, FREEMAN WATSON, AND DALLAS WHITFORD.





MISS GUSSIE KUYKENDALL
Director

WOMEN'S GLEE CLUB

The Women's Glee Club plays a definite part in musical activities of the college life. It presents various seasonal performances during the year, outstanding among which are the Christmas and Easter programs sung a cappella. The club contributes to chapel programs and lends inspiration to important college days and events.





EMMETT SAWYER
President

INTERNATIONAL RELATIONS CLUB

In the fall of 1939 the International Relations Club was formed on the campus by merging the History and the Social Science Clubs. The purpose of the club is to encourage the study of international relations in affiliation with the Carnegie Endowment of International Peace.

During the year various programs were presented by students who debated, lectured, and gave book reviews on international relations.

One of the highlights of the year's activities was the Southeastern Regional Conference of the International Relation Clubs' held at Chapel Hill, to which our Club sent representatives.



KI PI PLAYERS

The Ki Pi Players is composed of about fifty members. The purpose of this club is to give its members practical experience in the interpreting and producing of outstanding plays, to promote interest in the dramatic activities of the school, to develop the creative talent of the students of the school, to encourage the reading and witnessing of better plays, and to promote an enthusiasm for the drama in all its phases.

During the 1940 program, the club sponsored several one-act plays, with their major production coming in the spring quarter. The Ki Pi Players is a member of the Carolina Dramatics Association and the Alpha Psi Omega, a national honorary dramatics fraternity. Ethel Gaston, president of the group is pictured standing in front of the members photographed below.





KATHLEEN STRICKLAND
President

THE FUTURE TEACHERS OF AMERICA

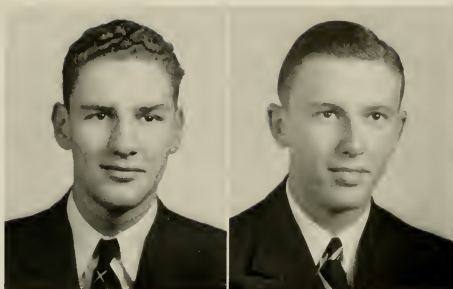
In the spring of 1939 the Robert H. Wright Chapter of the Future Teachers of America was organized through the guidance of its sponsor, Miss Emma L. Hooper. Our club is affiliated with the National Education Association. The purpose of the club is to give teachers in training practical experience in working together in a democratic way on the problems of the profession. Programs in the club this year have included social entertainment as well as educational discussion.



PIECES OF EIGHT

Although the *Pieces of Eight* made its debut in the spring of 1939, it was not presented to the students until the fall of '39. During the past year it has financed itself, and kept under control

by its own power. Next year this humor-literary magazine will reach every student, and become an E. C. T. C. publication in its own right. This spring it braved the terrors of the deep and became, by student approval, a member of the Publications Board, that unknown quantity mentioned elsewhere in this pretentious pamphlet.



GEORGE LAUTARES
Editor

ALTON PAYNE
Business Manager



HARVEY DEAL
Editor

◆
EDITORIAL STAFF

We, the staff of *THE TECOAN* present this, the 1940 edition of the yearbook of East Carolina Teachers College to the students. With hopes and fears we give and take. If we have made mistakes, we apologize. If we have pleased you, of course we have succeeded. We wish here to thank Mr. A. L. Dittmer for his help on our theme, and give due credit to Ethel Gaston, a member of our staff, for her indeed creditable work on the figures used as a theme center.



THE 1940



Left to Right: DOROTHY DALRYMPLE, KATHERINE P. LEWIS, BILL MERNER, ETHEL GASTON, MARGARET JARVIS, AND LINDSAY WHICHARD.
Seated: HARVEY DEAL.

PRUE NEWBY
Business Manager



BUSINESS STAFF

The business staff is justly proud of the amount of advertising it has obtained this year, and is grateful to the firms who have helped to make the publication of the 1940 yearbook a financial success. It wishes to acknowledge the valuable assistance, for both staffs of Herbert Hitch, Charlotte Engraving Co., Charlotte; Frank Fleming, Lassiter Press, Charlotte; and "Rev." Danbar, Dunbar Studio, Charlotte. The staffs also wish to thank all students who have helped us in any way—there have been many.

TECOAN



Left to Right: URSULA CARR, EVA CARTER, MARY HEJEN GULLEDGE, PRUE NEWBY, SARAH BRITT, AND JESSIE KEITH.



EDITOR'S SPONSOR: MRS. R. C. DEAL



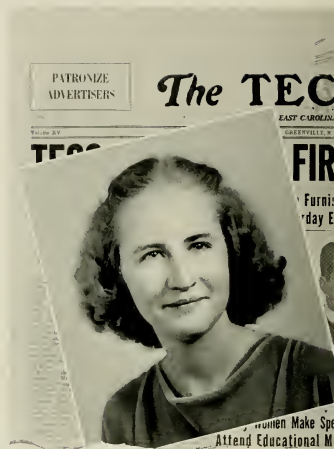
BUSINESS MANAGER'S SPONSOR: MRS. W. G. NEWBY

DOROTHY HOLLAR
Editor



EDITORIAL STAFF

The policy of the *Teco Echo* this year has been to make the publication the voice of the students through its news stories, open forum, and editorials. During the year there have been five special editions. The first came in the fall quarter before the Varsity Club play. Before the senior play, "Stage Door," the second special issue was published. The third special issue was in the form of an eight-page homecoming, dedication, and good will issue, of which over 3,000 copies were distributed over Greenville and to the visitors on the campus on dedication day. In the spring quarter two special issues were published; one being an April Fool issue which was distributed over the campus in addition to the regular issue which was distributed later in the week. Also an Alumni issue was published and distributed to approximately 1,600 former students.



TECO



LENA MAE SMITH, BARBARA KEUZENKAMP, PATSY MCINTYRE, ELIZABETH MEADOWS, BETTY KEUZENKAMP, MARY HORNE, LARUE MOORING.

HELEN FLANAGAN
Business Manager



BUSINESS STAFF

The advertising staff of the *Teco Echo* has endeavored to serve the students as a source of information, as a medium of publicity, and as an aid in financing the paper.

We feel that cooperation among the staff members, the students and all others connected, is responsible for whatever success we have had.



ECHO



LALLAH B. WATTS, BRANTLEY DELOATCHE, MARY AGNES DEAL, ALICE POWELL, JEAN WENDT, ELLEN MCINTYRE.



CHRISTINE HARRIS
Chief Marshal

Emerson Society

With success as its goal, the Emerson Society has done much during the year 1939-40 to carry forth the success of its previous years.

The high lights of our year have been: an informal dance given for the freshmen, the one-act play, "Girls in White," and the sponsorship of the winter dance. All of these were great successes—thanks to our loyal Emersons.

Throughout this year, we have tried to enrich our lives with the more beautiful works of literature and on the whole we consider this year a real success—a year each Emerson may well be proud of.



META VIRGINIA HAMMOND
President



FRANCES M. BOYD
Vice-President



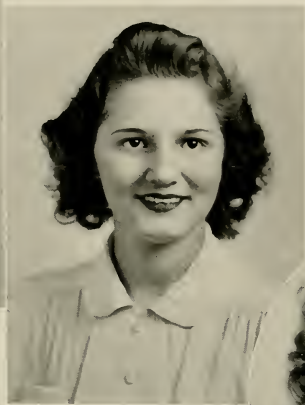
ANNIE HART BOONE
Secretary

JANE WILLIAMS
Treasurer



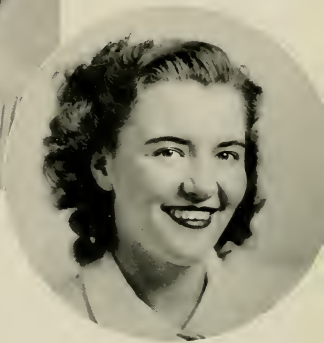


FRANCES M. BOYD
Marshal



DOROTHY SPENCE
Marshal

DOROTHY DALRYMPLE
Marshal



RUTH BRITT
Marshal

VERNA RAE BRADLEY
Marshal



Poe Society

During the school year of 1939-40, the Edgar Allan Poe Literary Society tried to grow in membership, appreciation of music, art, and literature, and in prestige on the campus.

Three of our outstanding activities were: one, a very successful dance, having sponsors for the first time here; two, speeches by Miss F. Meredith Deitz, editor of the *Southern Literary Messenger*, who was here for three days, and; three, a one-act play, "Sanatorium," which won the silver loving cup in the contest between the three societies. WGTC, the new radio station in Greenville, asked the Poe Society to give a program on the air, representing the organizations on the campus.



IRIS DAVIS
President



EDITH W. HARRIS
Vice-President



THADYS JOHNSON
Secretary



MIRIAM PERRY
Treasurer



SARAH ANN MAXWELL
Marshal



IDA RUTH KNOWLES
Marshal



REBECCA ROSS
Marshal

JEAN WENDT
Marshal



REBECCA SHANKS
Marshal



Lanier Society



RUTH WOOD PRITCHARD
President

The worthy purpose for which Sidney Lanier himself lived—those are the ideals ever before the loyal members of the Lanier Society. We began our work for the year by a friendly welcome to the freshman class of 1939-40 through an outdoor supper at the college lake. Terminating the comical initiation of the new members, they enjoyed a delightful social hour.

One of the highlights of the year was the Inter-Society one-act play contest in which our talent was well recognized. Our programs for monthly meetings are always planned for their literary interest as well as entertainment for the members.

Under the sponsorship of the Lanier Society, the spring dance, through its original planning, excellent orchestra was the greatest success of the year.



ELLEN MCINTYRE
Vice-President



JESSIE KEITH
Secretary

AGNES WATSON
Treasurer





RUTH WOOD PRITCHARD
Marshal



FRANCES HARDY
Marshal



EDNA OGBURNE
Marshal

EMILY MURPHY
Marshal



JOYCE CAMPBELL
Marshal





ATHLETICS



Varsity



Club



The Varsity Club draws its members from lettermen in the various sports on the campus: football, basketball, baseball, boxing, and tennis. This year for the first time monogram sweaters were awarded to boys earning them in tennis, one of the minor sports.



Outstanding among the club's activities this year were: the Varsity Club play, "The Milky Way," at which the "Varsity Club Sweetheart" was crowned, and the third annual Varsity Club dance, centered around the club sweetheart, Miss Jean Wendt.



FOOTBALL

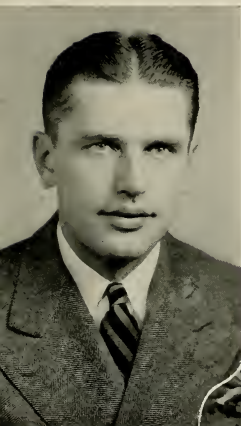


The 1939 edition of the Pirate football squad assembled at the college two weeks before school opened for what they hoped would be one of their best seasons. The squad, although not large in size or number was an average small college squad and with several lettermen returning to form a nucleus, prospects looked better than they had for the past three years.

After about two weeks training and only a week before the opening game injuries began to occur that put a damper on the spirits of everyone concerned. Two lettermen went out for the season with injured knees.

During the entire season the squad was never at full strength and consequently suffered reverse after reverse in many hard fought games.

Although the team from a winning standpoint, was far from successful, valuable experience was gained, and without abnormal injuries next year's prospects are already looking brighter.



Coach O. A. Hankner opened his coaching career on the campus with a tough schedule facing him, and in spite of injuries and other handicaps facing him, guided the squad through the season, often beaten, but unconquered in spirit.





1—AMBROSE STANKUS 2—WILLIAM HARRIS 3—WALTER ROGERS 4—BILL SHELTON 5—IRVING POLIAKOFF
6—NORMAN MAYO 7—WILEY MAYO 8—JOE WILLIAMS

MERWIN FRAZELLE

Given medal for being most valuable player





1—ARTHUR HODDER 2—JOE HATEM 3—MATT PHILLIPS 4—WAYLAN TUCKER 5—JACK MCJUNKIN
6—ADRIAN BROWN 7—BILL DUDASH 8—RICHARD CHADWICK



ALBERT MANUS
Manager

BASKET

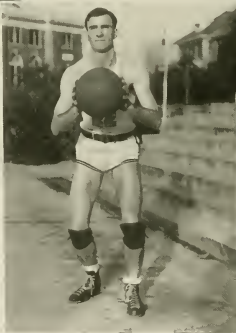


Front Row: TOM COX, BILL SHELTON, TOM PARRISH, HARRY RIDDICK, WILEY BROWN, JIMMIE DEMPSEY.

Second Row: KELLY MARTIN, DAVE WATSON, DONALD BROCK, GEORGE LAUTARES, RANDOLPH ROPER, FLOYD HINTON.



FARLEY
Coach



BILL SHELTON
Captain

BALL

Coach "Bo" Farley's East Carolina Pirates concluded a relatively successful basketball season here the last of February with a 67-51 victory over Langley Field's Aces. Though the Pirates piled up an early advantage, the game was a hard fought one. Lautares, Brock, and Shelton were high scorers.

Among the hard fought games high-lighting the season, the traditional battle with Atlantic Christian ranks among the highest. After the furious battle was over, the scoreboard showed 49 to 46 as the final score. Causing considerable student interest was the fact that the victory entitled the Pirates to retain the Bohunk trophy—a prize fought over by the rival teams from year to year.

A victory over Westinghouse Apprentice team rated considerable cheering and excitement due to the fact that the Pirates entered the game as underdogs, and then emerged victorious with a score of 51-44. Brock, rangy center, paced the Pirates with a total of 19 points.



SHELTON, PARRISH, HINTON, and the vanishing man run off a play for us.

BASEBALL



Front Row: MARTIN, HATEM, MAYO, SHELTON, RIDENHOUR, BREECE, WELLS.

Back Row: SCARBOROUGH, ROEBUCK, NORTHCUTT, HINTON, PHILIPS, MORITZ, FUTRELL, *Coach* GILBERT.



RIDENHOUR
Captain



SCARBOROUGH
Manager



Coach Gordon Gilbert's Pirates got off to a bad start for the 1939 season, by dropping the first game to Campbell College's nine to the tune of 13-5. Joe Hatem and Floyd Hinton led the Teachers in hits.

During the remainder of the season the Pirates picked up considerably. On April 10 and 11, the Pirates split a pair of games with the High Point College nine. In the first game Earl Smith, Bill Shelton, and Floyd Hinton led the Teachers as they walked away with the game, 22-3, to Kelly Martin's pitching. The following day they dropped a close game to the same nine. Results: 9-8. On April 23, the Pirates dropped another close one to The Atlantic Christian Bulldogs, 10-9.

In close succession, the Pirates defeated William and Mary (Norfolk Division), 16 to 1; Louisburg's Trojans, 4 to 1; and the Middies of the United States Naval Base (Norfolk), 10 to 9.

As a whole the season was rather a successful one for the Pirates, although during the last week of the season, they dropped games to High Point, split a two-game series with West Carolina. Bright spot in closing the season was the win over the Norfolk Naval Base May 13, 10-9.

BOXING



Due to insufficient participation and interest, no boxing matches were scheduled this year. The boys pictured above trained up until the last minute, when plans were finally and definitely dropped, thereby earning a place in the yearbook. Fleming and Chadwick, the first two on the front row are both Golden Gloves state champions.



BOYS TENNIS

The boys tennis team, composed of Charles Harris, Louis Wilkerson, Douglas Glover, Leo Burks, Charles Greene, and Leon Meadows beat Louisburg College's team 5 to 3, and lost the return match 5 to 4.

On May 6, darkness halted a match with Oak Ridge Military Academy, with the score 4-4.

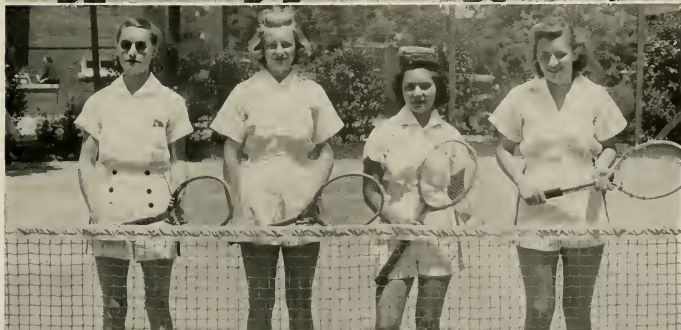
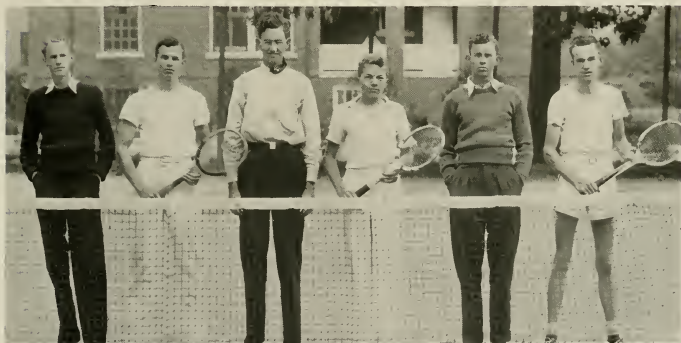
In subsequent matches they defeated Atlantic Christian 9-0; Appalachian 5-2; and a match with Wake Forest was halted by darkness with Wake Forest in the lead, 6-1.

GIRLS TENNIS

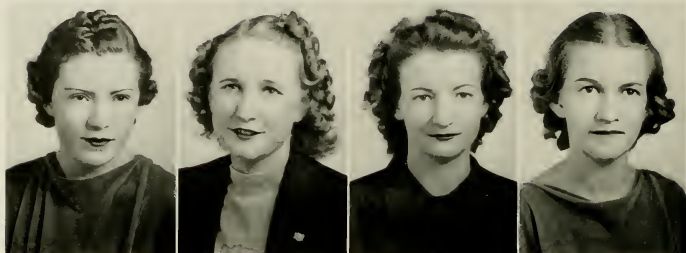
The girls tennis team scheduled only three matches; one home game, with Long Island University, and two with Blackstone Junior College, at Blackstone, Va.

The Long Island game was canceled, and the girls won the two Virginia matches by a wide margin.

On the team were Nancy Albright, Ruth Parker, Mary Frances Byrd, Dorothy Dalrymple, and Prue Newby.



WOMEN'S ATHLETIC ASSOCIATION



EVA McMILLAN
President

MYRTLE HOPKINS
Vice-President

ESTELLE EDWARDS
Secretary

FRANCES NANCE
Treasurer

The Women's Athletic Association sponsors the intra-mural sports of basketball, volley ball, and tennis, besides promoting interest in field, track, and play days.

Special divisions of the club embrace the sports of softball, basketball, croquet, tennis, horseshoes, soccer, hiking, table tennis, and archery. College letters, sweaters, and an intramural medal reward outstanding work in these fields.



SPOTS of SPORTS



Usually unpictured are the drudgeries undergone in preparing for a game of tennis. These pictures were unposed (notice the barefooted girl adjusting the net), and therefore should picture truthfully the preparation for, and the playing of a game of tennis.



HEADS *of* DEPARTMENTS



VILEIGH AUSTIN
Head of Volley Ball



ANNIE L. PARKER
Head of Soccer

This year the intercollegiate program for girls' athletics has been dropped to make way for more intramural activities. The purpose in mind is to provide some form of sport for all members of the student body. Another is to develop a cooperative spirit among the different members. A larger number of students are participating in these sports this year and additional events have been added to the Intra-mural program.



The heads of these departments, under the capable advisorship of Miss Helen McElwain carefully plan out programs for their various departments. Play nights were held throughout the year during which large numbers of students played volley ball, badminton, shuffleboard, indoor tennis, target shooting, etc.

In the spring and fall week-end hikes were planned, and tennis, softball, archery, soccer and other outdoor sports were given much attention.



ELIZABETH TOMLINSON
Head of Softball



NICK PROCTOR
Head of Basketball



JOSEPHINE JACKSON
Head of Individual Sports



JENNIE HENSON
Head of Hiking



EILEEN TOMLINSON
Head of Field Hockey



The above group is a composite of members of the various branches of the women's athletic department. A number of the department heads are in the group, together with miscellaneous members who have done representative work in the departments.

DORMITORY HEADS



MARY GRACE SIVERTSEN
Wilson Hall



DORIS ROBERTS
Cotten Hall



MARGARET WOOD
Jarvis Hall



MILDRED GUPTON
Fleming Hall

ALL STAR INTRAMURALS



SOFTBALL TEAM

The softball team was newly organized on the campus last spring, and this group comprises the charter members.

SOCCER TEAM

The soccer team, with its captain, Annie Laurie Parker pictured in the center, takes on all comers, and in the spring holds its place of prestige on the athletic field.



VOLLEY BALL

All the year round this group of girls plays, both in the gymnasium, and on the field, tackling even faculty and boys' teams.



FIELD HOCKEY

This group, too, terrorizes the athletic field, both fall and spring, waylaying all challengers, and, in spite of falls, they get up and go again.





FEATURES





DOROTHY REED MILLER



MARY FRANCES IRVIN



CHRISTINE HARRIS



MIRIAM SAWYER



GERALDINE BULLOCK



FRANCES ROEBUCK



SARAH THOMPSON



MARY ELIZABETH BEASLEY



ADVERTISEMENTS

Congratulations

SENIORS

Greenville News-Leader

"The Morning Daily"

COBURN SHOE CO.

"Your Shoe Store"

Ask Your Friends About
Our Shoes—They Know

Greenville, N. C.

PEOPLES BAKERY



*Patronize the
College "Y"
Store*

Relax—And Enjoy

ROYAL CROWN COLA

Best by Taste—Test

You are always welcome to the store
that carries the Juniors' and Women's
smart apparel.

WILLIAMS

The Ladies Store

Greenville, N. C.

*For 20 Years
The Largest And
Most Complete
Department Store
in
Eastern Carolina*



BLOUNT-HARVEY

Everything In

COSMETICS

SODA FOUNTAIN • LUNCHEONETTE

BISSETTE'S
DRUG STORE

Near Five Points

BEST JEWELRY COMPANY

"Eastern Carolina's Leading Jeweler"

Established 1901

QUALITY • VALUE • SERVICE

"YOUR JEWELERS"

BRODY'S

LADIES' DEPARTMENT STORE

Style • Quality

Economy

Photographs

BAKER'S STUDIO

Greenville, N. C.

ALL WORK GUARANTEED

Compliments of

KARES BROS.

Restaurant, Soda and News Service

"We Serve the Best"

Compliments of

**GREENVILLE FLORAL
COMPANY**

Telephone 443

Gift Dept. Beauty Salon
Gifts for all Occasions

The Colonial Shop
Personality Hairstyling

426 Evans St. Dial 2349

TOMORROW'S STYLES TODAY

SALLY FROCKS

Smart Clothes for Smart Girls

Greenville - Fayetteville - Wilmington

Compliments

WHITES STORE, INC.

Greenville, N. C.
Washington, N. C.
Windsor, N. C.
Ahoskie, N. C.
Scotland Neck, N. C.
Mount Olive, N. C.

Eric G. Flannagan
Architect

Henderson, N. C.



HOME FURNITURE STORE

Complete line of
Home Furnishings

J. A. Collins
Manager

701 Dickinson Ave.
Greenville, N. C.

On and Off the Campus
Look For

NISBET-PROCTOR'S
CUTE CLOTHES

To Say CONGRATULATIONS

Is Not Enough

We would be most
ungrateful if we didn't
take this opportunity
of saying

THANKS

For the many visits you've paid
our store

BELK-TYLER COMPANY

Greenville, N. C.

**First Federal Savings & Loan
Association of Greenville**

Your Savings are Fully Guaranteed
up to \$5,000.00
By An Agency Of The Federal Government

Compliments of

GUARANTY BANK & TRUST CO.
Greenville, N. C.

*Ask Your Friends About
Our Service — They Know*

CITY SHOE SHOP
Greenville, N. C.

Shop at

E F I R D S
"Friendly Store"
Greenville, N. C.

DUNBAR STUDIO

Fine Portraits

228½ N. Tryon Street

Charlotte, N. C.

OFFICIAL PHOTOGRAPHERS

FOR

The 1940 TECOAN



CHARLOTTE ENGRAVING CO.

School Annual Engravers

Charlotte, North Carolina

School Publications



The many high awards won each year by school publications produced by us is the result of many years' specialization based on a comprehensive knowledge of art motifs, design, layout and publication trends.

A modern printing plant, operated by highly efficient craftsmen in every department, provides a quality and distinctiveness that is unsurpassed.



The LASSITER PRESS, Inc.

QUEEN CITY PRINTING COMPANY

CHARLOTTE, NORTH CAROLINA

PRINTERS OF THE 1940 TECOAN

Believe, I will
I'm sorry that
you didn't tell me
to go. You know
I'm always here
for you. Love
you.

Dearest Fay

Now that the year is nearly up, I look back with a great deal of pleasure at having been in English and Math with you, and if I may say so - at having been friends. Dear old Jarvis Hall - what would it be like without you? Some of these days I hope to be .0001 as smart as you have been this year with all of your (1)5.

Lots of Love & Luck -
AS EVER -
"Ship"

