

The 1939

Western











~~the 1939~~ *acorn*



*presenting*



# The Year of 1939



COPYRIGHT

EDITOR • PETE HILL  
BUS. MGR. • MILDRED BOYCE

PUBLISHED BY THE STUDENT BODY  
OF EAST CAROLINA TEACHERS  
COLLEGE, GREENVILLE, N. C.

# Foreword

*To the students of East Carolina Teachers College we present this book. As the school is for the students alone, we feel that it is only fitting that you should be the theme of the book which records your year's activity.*





## contents

THE COLLEGE  
CLASSES  
ACTIVITIES  
ATHLETICS  
FEATURES



## DEDICATION

*In appreciation of his years spent in our service, we, the students of East Carolina Teachers College, affectionately dedicate the 1939 issue of the TECOAN to Doctor Beecher Flanagan, whom we know not only as a teacher, but also as a friend.*



book one





The college





THE DOOR OF KNOWLEDGE



THE FOUNTAIN



COLUMNS



THE ADMINISTRATION BUILDING



WIND THROUGH THE WILLOW





A VIEW FROM AN AUSTIN WINDOW



AUSTIN TOWER





WEST OF WILSON



LEON R.  
MEADOWS  
*President*

You are living in the most interesting age of the world's history. Changes are taking place so rapidly that one finds it difficult to make the necessary adjustments. Traditions are shattered and new customs are substituted; old idols are torn down only to have rise in their places different and, we trust, better objectives for veneration; hero worship disappears; heroism lingers. Change is the law of life—it is one law that never alters. This being true, certain observations are pertinent:

Poise is essential to success in this revolutionary period; a proper sense of values will enable one to eliminate much that is useless; personal effort is necessary for the accomplishment of anything that is worth while; intelligence and reason should replace ignorance and emotion; character is the basis of everything that endures; spiritual power is the most dynamic influence in the universe; each individual is master of his own destiny.

## *Dr. Herbert Rebarker*

The students of East Carolina Teachers College are the messengers through which the institution's aims and ideals are interpreted to the public in terms of life and living. Our motto, "To Serve", is fully realized only through the efforts of our students as they go forth to represent the college in their chosen profession.



## *Annie L. Morton*

To those students who will be with us next year, as well as to those who are leaving in June, may I say—be always thoroughly sincere; or in the words of Madeleine Bridgers,

"Give to the world the best you have,  
And the best will come back to you."



# FACULTY

TOP ROW—Left to Right:

Leon R. Meadows, Ph.D.  
Director of Instruction, English

Lois G. Grigsby, M.A.  
English

Lucile Turner, Ph.D.  
English

Emma L. Hooper, M.A.  
English

Denver E. Baughan, Ph.D.  
English

MIDDLE ROW—Left to Right:

Mamie E. Jenkins, M.A.  
English

Mary Greene, M.A.  
English

M. N. Posey, Ph.D.  
English

Ralph C. Deal, B.D.  
Director of Instruction,  
Foreign Language

Beatrice Davis, M.A.  
French and English

BOTTOM ROW—Left to Right:

A. D. Frank, Ph.D.  
Director of Instruction, History

Laura T. Rose, M.A.  
History

Robert LeRoy Hilldrup, Ph.D.  
History

E. C. Hollar, M.A.  
History

J. D. Alexander, M.A.  
Athletic Coach, Physical  
Education



# FACULTY

TOP ROW—Left to Right:

Lucille Norton, M.A.  
Physical Education

Gussie Kuykendall, B.S.  
Director of Instruction, Public  
Schools

Lois V. Gorrell  
Music, Piano

Dean C. Tabor, M.A.  
Public School Music

Ruby Scholz  
Home Economics

MIDDLE ROW—Left to Right:

Rosoline Ivey, M.A.  
Home Economics

P. W. Picklesimer, M.A.  
Director of Instruction,  
Geography

W. A. Brown, Ph.D.  
Geography

J. B. Cummings, M.A.  
Geography

Ronald J. Slay, Ph.D.  
Director of Instruction, Science

BOTTOM ROW—Left to Right:

Helen Spangler, Ph.D.  
Science

Charles Reynolds, Ph.D.  
Science

Daniel R. Stull, Ph.D.  
Science

Mary Caghey, M.A.  
Science

Kate W. Lewis, M.A.  
Director of Instruction, Public  
School Music



# FACULTY

## TOP ROW—Left to Right:

William McHenry  
Industrial Arts

E. R. Browning, M.Ed.  
Commerce

Velma WooldridgeLowe, M.S.  
Commerce

Lena C. Ellis, M.A.  
Commerce

M. S. Wright  
Director of Instruction,  
Economics and Sociology

## MIDDLE ROW—Left to Right:

Beecher Flanagan, Ph.D.  
Economics and Government

Paul A. Toll, Ph.D.  
Sociology

E. L. Henderson, Ph.D.  
Director of Instruction, Adminis-  
tration and Supervision

Carl L. Adams, Ph.D.  
Director of Instruction,  
Education and Psychology

Annie C. Newell, M.A.  
Education

## BOTTOM ROW—Left to Right:

Lucile Charlton, M.A.  
Psychology

H. C. Haynes, Ph.D.  
Psychology

Dora C. Coates, M.A.  
Education

Herbert ReBarker, Ph.D.  
Director of Instruction,  
Mathematics

Louise Williams, M.A.  
Mathematics



# FACULTY

TOP ROW—Left to Right:

V. M. Mulholland, M.A.  
Critic Teacher, English

Mrs. Maude E. Bowen, A.B.  
Critic Teacher, English

Deanie Boone Haskett  
Critic Teacher, English

R. G. Walser  
Critic Teacher, English

E. R. Robinson  
Critic Teacher, Science

MIDDLE ROW—Left to Right:

Evelyn Rogers  
Critic Teacher, Home Economics

Mabel Lacy  
Critic Teacher, Home Economics

Jessie Schnopp, M.A.  
Critic Teacher, Home Economics

Imogene Riddick  
Critic Teacher, French

Herman R. R. Dally, M.A.  
Critic Teacher, History

BOTTOM ROW—Left to Right:

Robert Sugg Fleming, M.A.  
Critic Teacher, Science

Mrs. Herbert Utley, M.A.  
Critic Teacher, Mathematics

Christine Johnston, M.A.  
Critic Teacher, Second Grade

Lucy Nulton, M.A.  
Critic Teacher, Second Grade

Louise Golphin, A.B.  
Critic Teacher, Fourth Grade





# FACULTY

TOP ROW—Left to Right:

Alma Browning, M.A.  
Critic Teacher, Fourth Grade

Cleo Rainwater, M.A.  
Critic Teacher, Fifth Grade

Mrs. Linsay Savage, M.A.  
Critic Teacher, Third Grade

Elizabeth Hyman, M.A.  
Critic Teacher, Sixth Grade

Kathleen Plumb, M.A.  
Critic Teacher, Seventh Grade

MIDDLE ROW—Left to Right:

Eunice McGee, M.A.  
Critic Teacher, Third Grade

Anne Redwine, M.A.  
Critic Teacher, First Grade

Frances Wahl, M.A.  
Principal of the Training School

Elizabeth Smith, A.B.  
Assistant Dean of Women

Howard J. McGinnis, Ph.D.  
Registrar

BOTTOM ROW—Left to Right:

F. D. Duncan, B.S.  
Treasurer

Mrs. Mildred Owens  
Secretary

Rufus Johnson, B.S.  
Bookkeeper

Hazel Willis  
Secretary

Ola S. Ross  
Assistant Registrar





# FACULTY

TOP ROW—Left to Right:

Mrs. Roy Barrett  
Secretary to the President

James R. Gullledge, M.A.  
Librarian

Margoret Sammon, A.B.  
Assistant Librarian

MIDDLE ROW—Left to Right:

Ruth White  
Dormitory Councilor

Mary Cheatham  
Dormitory Councilor

Arley V. Moore  
Housekeeper

BOTTOM ROW—Left to Right:

Stella Grogan  
Superintendent of the Infirmary

Mary Lea Smith  
Assistant Superintendent of the  
Infirmary

Mrs. L. L. Rives  
Stewardess



book two



*the classes*



## IN MEMORIAM



MARGARET BULLARD

June 24, 1918

September 1, 1938

# Seniors

With the coming of June another class prepares to graduate. To the seniors looking back the short four years are full of pleasant memories. Who could forget that first week of entertainment? It seemed that we were the most important persons on campus. Then we entertained for the first time. The Valentine Dance given for the juniors was more than a success. Next year we were seasoned veterans and gave the sophomore dance with the ease of an experienced hostess. We were sure that our Junior-Senior Prom on the streets of Paris in sight of the Eiffel Tower was the most ambitious thing we would ever undertake. Now we leave, satisfied that our play, "The Children of the Moon," is the climax to four years of activity. To the rising senior class, we say, "More power to you!"



LUCILLE LEWIS



LOUISE ELAM



MADELINE BYRUM



MABRY HODGES

## OFFICERS

LUCILLE LEWIS.....	President
LOUISE ELAM.....	Vice-President
MADELINE BYRUM.....	Secretary
MABRY HODGES.....	Treasurer

# The 1939



ELIZABETH ADLEY

DUNN, N. C.

*Primary Education*

Student Government Council 1



VIOLA MAE ALPHIN

MOUNT OLIVE, N. C.

*Home Economics and Science*

Pineland Junior College 1; Home Economics Club 2, 3, 4;  
Science Club 3, 4; Y.W.C.A. 4.



SALLY ANDERSON

HALIFAX, N. C.

*Commerce and History*

Louisburg College 1, 2.



DORIS ARMSTRONG

ROCKY POINT, N. C.

*Primary Education*

Lanier Society 1, 2, 3, 4; Y.W.C.A. 1, 2, 3, 4; A. C. E. 4.



MARGUERITE ASBELL

EDENTON, N. C.

*Grammar Grade Education*



MARGUERITE AVERETT

OXFORD, N. C.

*Mathematics and History*

Y.W.C.A. 2, 3; Math Club 1, 2, 3, 4; Secretary of Math  
Club 2; President of Math Club 3; History Club 3, 4;  
Editorial Staff of TECOAN 4; Chief Cheer Leader 4; Pro-  
ctor 4; Lanier Society 1, 2, 3, 4; President A. D. S. Club 4;  
WHO'S WHO IN AMERICAN COLLEGES AND UNIVER-  
SITIES 4; Entertainment Committee 4; Chairman of Com-  
mittee on Race Relations 4; Interracial Conference 3.

# Seniors

# Tecoan

## OZELLA BARBOUR

ANGIER, N. C.

*English and History*

Campbell College 1, 2; English Club 4, Dramatics Club 4

## HAZEL BARNES

ROCKY MOUNT, N. C.

*Grammar Grade Education*

Poe Society 2.

## MADLYN BARNES

ROCKY MOUNT, N. C.

*Grammar Grade Education*

## EDITH BARRETT

FRANKLINTON, N. C.

*Primary Education*

Louisburg College; Ki Pi Players 3, 4, A. C. E. 3, 4; Verse Speaking Choir 3, 4.

## HILDA GRAY BATTEN

Selma, N. C.

*Home Economics and Science*

Y.W.C.A. 1; Home Economics Club 2, 3, 4; Science Club 2, 3, 4; President Science Club 4.

## RUTH VIVIAN BATTEN

SELMA, N. C.

*Primary Education*

Y.W.C.A. 1, 2, 3; Poe Society 1, 2, 3; A. C. E. 3, 4; Junior "Y" Cabinet 1; Vice-President of B. S. U. Council 4; Marshal 3; Board 3, 4.



of 1939

# The 1939



LETA SUSAN BEAMAN

SNOW HILL, N. C.

*Grammar Grade Education*

Mars Hill College 1, 2; Poe Society 3.



LUCILE MCGLOHAN BEAMAN

SNOW HILL, N. C.

*English and History*

Meredith College 1; B. S. U. 2; Lanier Society 2; W. A. A. 4.

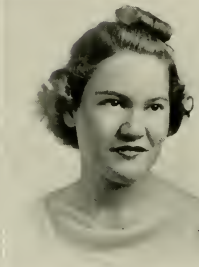


MARTHA LEEN BEAMAN

FOUNTAIN, N. C.

*Grammar Grade Education*

W. A. A. 1, 2, 3, 4; Y.W.C.A. 1, 4; Emerson Society 1, 2, 3, 4; Basketball 1.



LOUISE BECK

WADESBORO, N. C.

*Grammar Grade Education*



RUTH BELCHE

RICH SQUARE, N. C.

*Grammar Grade Education*



LUDELL BELLFLOWER

OAK CITY, N. C.

*Home Economics and Science*

Home Economics Club 1, 2, 3, 4; Emerson Society 1, 2, 3, 4.

# Seniors



# Tecoan

## ATHLEA BOONE

LOUISBURG, N. C.

*Home Economics and Science*

Louisburg College 1, 2; Home Economics Club 3, 4, B; U. Council 4; Y.W.C.A. 4; Poe Society 4.

## ELLEN DOUGLAS BOONE

JACKSON, N. C.

*Home Economics and Science*

Emerson Society 4; Home Economics Club 2

## FRANCES BLAIR BOYD

HENDERSON, N. C.

*Primary Education*

Glee Club 1, 2, 3, 4; Lonier Society 1, 2, 3, 4.

## SALLIE MILDRED BOYCE

WOODLAND, N. C.

*Home Economics and Science*

Glee Club 1, 2, 3, Y.W.C.A. 1; Home Economics Club 2, 3, 4; Science Group 2, 3, 4; S. G. A. 3; Poe Society 4; Social Committee 4; Business Manager TECOAN 4; N.C.C.P.N. 3, 4.

## CELESTA BOYETTE

KENLY, N. C.

*Primary Education*

Poe Society 1, 2, 3, 4; W. A. A. 1, 2, 3, 4; A. C. E. 4

## DOROTHY BRAGG

STEM, N. C.

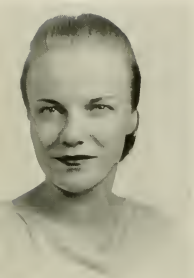
*Home Economics and Science*

Poe Society 1, 2, 3, 4; Granville County Club 1, 2, 3, 4.



of 1939

# The 1939



MARJORIE BRAY

ELIZABETH CITY, N. C.

*History and Social Science*

Lanier Society 1, 2, 4; Glee Club 1, 2, YWCA 2, Asbury College 3



EMILY BRENDLE

BOONEVILLE, N. C.

*History and English*

Lanier Society 1, 2, 3, 4; Vice-President Lanier Society 3, President Lanier Society 4; Marshal 4, YWCA 1; English Club 2, 3, 4; History Club 3, 4, Ki Pi Players 4, Treasurer Ki Pi Players 4; Treasurer Sophomore Class 2; Social Committee 3



SARAH ELIZABETH BRISTOL

STATESVILLE, N. C.

*Primary Education*

Mitchell College 1, 2, W.C.U.N.C. 3, W.A.A. 3, 4; Glee Club 3, A.C.E. 3, 4, Senior Play 4.



HATTIE LAURA BRITT

CLINTON, N. C.

*French and English*

Emerson Society 1, 2, 3, 4, Vice-President 3, President 4; Marshal 4; Phi Sigma 3, 4, English Club 2, 3, 4, YWCA 1, Junior Y Cabinet 1; Ki Pi Players, Secretary 4; TECOAN Editorial Staff 4; Publications Board 4; Verse Speaking Chair 4; Feature 4, WHO'S WHO IN AMERICAN COLLEGES AND UNIVERSITIES 4.

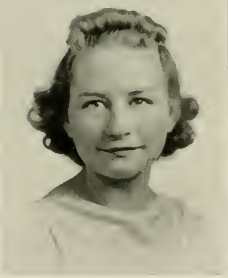


LOIS BRADY

FREELAND, N. C.

*Grammar Grade Education*

Campbell College 1, 2, YWCA 4, Glee Club 3, 4, A.C.E. 4



ROSA BROWN

RAEFORD, N. C.

*History and Mathematics*

Louisburg College 1, 2, Emerson Society 3, 4, History Club 4, Math Club 3, 4

# Seniors

# Tecoan

ELEANORE WINIFRED BURNEY  
AYDEN, N. C.

*Primary Education*

Lanier Society 1; A. C. E. 4.

ETHEL FREEMAN BUTLER

*Grammar Grade Education*

Pineland Junior College 1, 2; Glee Club 3.

ETHEL LEE BYRD

PARKTON, N. C.

*Primary Education*

W. A. A. 1, 2, 3, 4; Treasurer 2; Head of Tennis 3; Emerson Society 1, 2, 3, 4; Marshal 2, 3; TECO ECHO Staff 3, A. C. E. 3, 4.

MADELEINE BYRUM

SUNBURY, N. C.

*History and English*

Poe Society 1, 2, 3, 4; Marshal 4; English Club 2, 3, 4; Vice-President 3; President 4; History Club 3, 4; Ki Phi Players 3, 4; Class Secretary 4; Speech Choir 3, 4; B. S. U. 1, 2, 3, 4; Band 3, 4.

VIRGINIA CARRAWAY

FARMVILLE, N. C.

*Home Economics and Science*

ALMA CARRAWAY

SNOW HILL, N. C.

*Grammar Grade Education*

W. A. A. 1, 2, 3, 4; Lanier Society 1, 2; Head of a Sport 1, 2, 3.



of 1939

# The 1939



MOLLIE B. CARTWRIGHT

BATH, N. C.

*Grammar Grade Education*



GLADYS CASHWELL

INGOLD, N. C.

*Primary Education*



ELIZABETH CHAMBERS

REIDSVILLE, N. C.

*Primary Education*

W. C. U. N. C. 1, A. C. E. S.



MARTHA COBB

FARMVILLE, N. C.

*Primary Education*

Emerson Society 1, 2, 3, 4, W. A. A. 1, Y. W. C. A. 1, 4



ESTALENE COOK

FAYETTEVILLE, N. C.

*Home Economics and Science*

Chowan College 1, 2; Y. W. C. A. 3; B. S. U. Council 4;  
Science Club 4; Home Economics Club 4.



MARY CLYDE COPPEDGE

ROCKY MOUNT, N. C.

*English and French*

Campbell College 1, 2; Y. W. C. A. 3; Phi Sigma 4; English  
Club 4; TECO ECHO Staff 4; B. S. U. Council 4.

# Seniors

# Tecoan

## MARY CRAVEN

CREEDMOOR, N. C.

*Home Economics and Science*

Poe Society 1, 2, 3, 4; Y.W.C.A. 1, 2, 3, 4; Science Club 2, 3; Home Economics Club 2, 3, 4; Methodist Student Council 3, 4.

## DOLLY CRAWFORD

PIKEVILLE, N. C.

*Primary Education*

## RUTH CREEKMORE

MOYCOCK, N. C.

*History and English*

Emerson Society 1, 2, 3, 4, Treasurer 3; Y.W.C.A. 2, 3, 4; History Club 3, 4; English Club 2, 3, 4, Treasurer 4; TECO ECHO Reporter 3; Class Vice-President 3; Proctor 3, 4.

## MABLE GRAY CRISP

AYDEN, N. C.

*Primary Education*

## MINNIE BELL CRAFT

GREENVILLE, N. C.

*Grammar Grade Education*

## BOBBIE BLACKWELL DAVIS

SOUTHPORT, N. C.

*Primary Education*

St. Genevieve 1, 2; A. C. E. 3, 4; Poe Society 3, 4, Y.W.C.A. 3, 4; Orchestra 3.



of 1939

# The 1939



JUANITA DAVIS  
MIDDLESEX, N. C.

Campbell College 1, 2; English Club 4; B. S. U. Council 4



JULIA K. DAVIS  
KINSTON, N. C.

*Grammar Grade Education*



LULA MAE DAVIS  
RALEIGH, N. C.

*History and Mathematics*

Peace Junior College 1, 2, Math Club 3, 4.



GRACE DAWSON  
KINSTON, N. C.

*Grammar Grade Education*

Poe Society 1, 2, 3, 4, Student Council 2, Y.W.C.A. 3,  
S. G. A. Secretary, Summer 3, Marshal, Summer 3.



MARIE DAWSON  
ALLIANCE, N. C.

*Home Economics and Science*

Y.W.C.A. 1, 2, 3, 4; Y.W.C.A. Cabinet 2, 3, 4, Y.W.C.A.  
Vice-President 3, President 4, Vice-President of State  
Y.W. & Y.M.C.A. 4; House President 2; Home Economics  
Club 2, 3, 4; Science Club 2, 3, 4; Junior "Y" Cabinet 1



CATHERINE DENSON  
ROCKY MOUNT, N. C.

*Primary Education*

A. C. E. 1, 2, 3, 4; S. G. A. Secretary, Summer 3

# Seniors

# Tecoan

## GENEVIEVE EAKES

CLINTON, N. C.

### *Home Economics and Science*

Poe Society 1, 2; Science Club 2, 3, 4; Home Economics Club 1, 2, 3, 4; S. G. A. House President 3; Y.W.C.A. 2, 3, 4; Y.W.C.A. Cabinet 4

## FLORINE EDWARDS

HENDERSON, N. C.

### *Home Economics and Science*

Home Economics Club 2, 3, 4; W. A. A. 3, 4; Science Club 1, 2, 3, 4; Emerson Society 1, 2; Y.W.C.A. 4

## LOUISE ELAM

OXFORD, N. C.

### *Mathematics and History*

Lanier Society 1, 2, 3, 4; Y.W.C.A. 2; Math Club 1, 2, 3, 4; Vice-President 3; History Club 2, 3; Vice-President 3; President 4; Class Vice-President 4.

## MARIE ELDRIDGE

DUNN, N. C.

### *Primary Education*

A. C. E. 3; Poe Society 2, 3.

## LENA MAY ETHERIDGE

WHITAKERS, N. C.

### *Commerce and English*

Glee Club 1, 2, 3, 4; Y.W.C.A. 1, 2; Commerce Club 2, 3, 4; Secretary and Treasurer 3; Poe Society 1, 2, 3, 4; TECO ECHO Reporter 4; English Club 3, 4; S. G. A. 4.

## MADELYN EURE

RODUCO, N. C.

### *Primary Education*

W. A. A. 4; Poe Society 4.



of 1939



# The 1939



CAROLINE EVANS

WOODARD, N. C.

*Primary Education*

Poe Society 1, 2, 3, 4, Y.W.C.A. 1, 2, 4, TECO ECHO Staff 2, 3; Junior Y Cabinet 1, Class Treasurer 3.

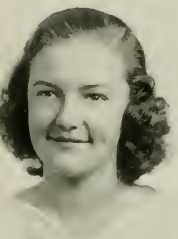


EDITH EVANS

KELFORD, N. C.

*Grammar Grade Education*

Poe Society 1, Y.W.C.A. 1, 3, 4, A. C. E. 4; Chowan College 2.



SUSAN EVANS

ST. PAULS, N. C.

*Grammar Grade Education*

Y.W.C.A. 1, 2, 3, 4, Y.W.C.A. Cabinet 3, 4, President Presbyterian Student Association 2, 3, Class President 3, Social Committee 4.



OSSIE VIRGINIA FAIRCLOTH

AUTRYVILLE, N. C.

*Grammar Grade Education*

Pineland Junior College 1, 2, Y.W.C.A. 4.



ANNIE B. FARRIOR

WILLARD, N. C.

*Primary Education*



MARY ALICE FELTON

HERTFORD, N. C.

*Grammar Grade Education*

Math Club 1, Y.W.C.A. 1; Lanier Society 1, 2, 3, 4; A. C. E. 4.

# Seniors

# Chowan

REBECCA FINCH

BAILEY, N. C.

*Home Economics and Science*

High Point College 1; W.C.T.U. 2.

MILDRED FISHER

BATTLEBORO, N. C.

*Primary Education*

MARY BELLE FLEMING

GREENVILLE, N. C.

*Grammar Grade Education*

HELEN FOLEY

GREENVILLE, N. C.

*Grammar Grade Education*

Glee Club 1, 2, 3

MARY ALICE FRANKLIN

STEM, N. C.

*Home Economics and Science*

Y.W.C.A. 1; Junior Y Cabinet 1; Granville County Club 1,  
2, 3, 4; Poe Society 1, 2, 3, 4; Home Economics Club 2,  
3, 4; Science Club 2, 3, 4.

MILDRED FREEMAN

COLERAIN, N. C.

*Grammar Grade Education*

Chowan College 1, 2.



of 1939

# The 1939



LOTTIE GADDY

PEACHLAND, N. C.

*English and History*

Wingate Junior College 1, 2, YWCA 3, 4, English Club 4, History Club 4

MARJORIE DEAN GARRIS

AYDEN, N. C.

*Mathematics and Science*

Science Club 1, 2, 3, 4.



GLADYS GASKINS

COVE CITY, N. C.

*Home Economics and Science*

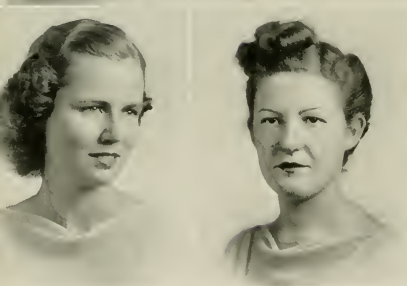
YWCA 1, 2, Home Economics Club 2, 3, 4

ELLA DILL GIBBS

SWAN QUARTER, N. C.

*Primary Education*

Emerson Society 1, 2, 3, 4



CELIA GRANTHAM

GOLDSBORO, N. C.

*Primary Education*

Louisburg College 1, 2, A. C. E. 3, 4, TECO ECHO Reporter 4, YWCA 4, Band 3, 4

EMMA GLADYS GRAY

STOKES, N. C.

*Grammar Grade Education*

For-Society 1, 2, 3, 4, YWCA 1

# Seniors

# Tecoan

## NANCY HAISLIP

HASSELL, N. C.

*Home Economics and Science*

Home Economics Club 2, 3, 4; Emerson Society 1, 2, YW  
C.A. 3.

## CAROLYN HAMRIC

GREENVILLE, N. C.

*Science and French*

Glee Club 1, 2.

## HELEN HARDING

CHOCOWINITY, N. C.

*Grammar Grade Education*

Emerson Society 1, 2, 3, 4; Secretary of Junior Normal  
Class 1; TECO ECHO Representative 2

## CLAUDIA DARE HARPER

AYDEN, N. C.

*Primary Education*

Poe Society 2; A. C. E. 4.

## IRIS HARRELL

WINDSOR, N. C.

*Primary Education*

Poe Society 1, 2, 3, 4; A. C. E. 4.

## JOYCE BRATTAIN HARRELL

HERTFORD, N. C.

*Commerce and History*

YW.C.A. 1, 2, 3, 4; Junior "Y" Cabinet, Secretary and  
Treasurer 1; Poe Society 1, 2, 3, 4; Math Club 1; W. A.  
A. 1; Class Secretary 1; Commerce Club 2, 3, 4, Secretary  
and Treasurer 2; Marshal 2; Feature 2; S. G. A., Treasurer  
2, Vice-President 3; Handbook Editor 3; Delegate to  
S.I.A.S.G. 2, 3; Delegate to North Carolina Student Legis-  
lative Assembly 3; Chairman Social Committee 4; Senior  
Superlative 4; WHO'S WHO IN AMERICAN UNIVERSI-  
TIES AND COLLEGES 4



of 1939

# The 1939



ELEANOR HARRINGTON

GREENVILLE, N. C.

*Primary Education*



OPAL CLAIRE HARRIS

GREENVILLE, N. C.

*Grammar Grade Education*



JENNIE HARRIS

WALSTONBURG, N. C.

*Grammar Grade Education*

W. A. A. 1, 2, 3, 4; Lonier Society 1, 2.



ALICE McIVER HARRISON

HENDERSON, N. C.

*Primary Education*

Peace Junior College 1, 2, YWCA 3, 4; YWCA Cabinet 4; A. C. E. 3, 4; Glee Club 3, 4; Presbyterian Student Association 3, 4, Proctor 4.



PATTY HARTIS

WILMINGTON, N. C.

*Grammar Grade Education*

Emerson Society 1, 2, 3, 4, YWCA 3.



EMILY HAWES

ATKINSON, N. C.

*Grammar Grade Education*

Lonier Society 1, 2, 3, 4.

# Seniors

# Tecoan

LOIS HINSON

MONROE, N. C.

*Grammar Grade Education*

Wingate Junior College 1, 2; Poe Society 1, 1, Girl Scout 3, 4.

FRANCES LOUISE HERMAN

CONOVER, N. C.

*Primary Education*

A.S.T.C. 1; Mitchell College 2; Orchestra 3, 4; Bond 3, 4; Glee Club 3, 4; A. C. E. 3, 4.

HULDAH HESTER

HURDLE MILLS, N. C.

*Grammar Grade Education*

Poe Society 1, 2, 3, 4, Marshal 2, 3, Proctor 3

MARY LOUISE HESTER

HURDLE MILLS, N. C.

*Grammar Grade Education*

Poe Society 1, 2, 3, 4; W. A. A. 4.

JEWELL HILL

KINSTON, N. C.

*Home Economics and Science*

Science Club 2, 3, 4; Home Economics Club 2, 3, 4; Poe Society 1, 2, 3, 4; TECOAN Representative 1, 4.

PETE HILL

SANFORD, N. C.

*Mathematics and History*

Y.W.C.A. 1; Junior "Y" Cabinet 1; W. A. A. 1; Math Club 2, 3, 4; History Club 3, 4; Ki Pi Players 3, 4; Emerson Society 1, 2, 3, 4, Treasurer 2, Secretary 4; TECOAN Staff 3, Editor 4; Delegate to N.C.C.P.A. 3, 4; Senior Superlative 4; WHO'S WHO IN AMERICAN UNIVERSITIES AND COLLEGES 4.



of 1939

# The 1939



VIRGINIA FRANCES HILL

KINSTON, N. C.

*Mathematics and Science*



ANNIE LAURIE HODGES

WASHINGTON, N. C.

*Grammar Grade Education*

Emerson Society 1, 2, 3, 4.



MABRY HODGES

WASHINGTON, N. C.

*French and English*

Emerson Society 1, 2, 3, 4; English Club 2, 3, 4; Phi Sigma 2, 3, 4, Vice-President 4; Class Treasurer 4.



CHARITY L. HOLLAND

PIKEVILLE, N. C.

*Primary Education*

Louisburg College 1, 2, A. C. E. 3, 4; M. S. A. 3, 4.



DORIS HOLLOWELL

PRINCETON, N. C.

*English and French*

W. A. A. 1, 2, 3, 4, Vice-President 4; Head of Basketball 4; Varsity Basketball 1, 2, 3, 4; B. S. U. Council 2, 3, President Baptist Sunday School Class 2; Secretary B. S. U. 3; Poe Society 1, 2; Y.W.C.A. 1; English Club 3, 4; French Club 3, 4; S. G. A. 2.



MILDRED HOLLOWELL

PRINCETON, N. C.

*Primary Education*

Y.W.C.A. 1, 2, 3, 4, Junior "Y" Cabinet 1; Y.W.C.A. Choir 1, 2; Poe Society 1, 2, 3, 4; B. S. U. 1, 2, 3, 4, Secretary 2, Vice-President 3; W. A. A. 1, 2, 3, 4, Secretary 4; Glee Club 1, 2, 3; A. C. E. 4.

# Seniors



# Tecoa

## NENA VERNON HOLT

SEVEN SPRINGS, N. C.

### *Primary Education*

Campbell College 1, 2, Y.W.C.A. 4, A. C. E. 4; Poe Society 3

## THELMA HOLT

PRINCETON, N. C.

### *Grammar Grade Education*

## HELEN JEW HORNE

BURGAU, N. C.

### *Primary Education*

Poe Society 1, 2, 3, 4.

## MARY COUNCIL HORNE

GREENVILLE, N. C.

### *Grammar Grade Education*

Peace Junior College 1, 2.

## MILDRED HOWELL

KENLY, N. C.

### *Primary Education*

Poe Society 1, 2, 3, 4; P. S. A. 1, 2, 3, 4; W. A. A. 4, A. C. E. 4.

## SELLASTINE HUGHES

COLERAIN, N. C.

### *Primary Education*

Y.W.C.A. 1, 2, 4; Junior "Y" Cabinet 1; Poe Society 1, 2; A. C. E. 4; Superlative 4.



of 1939

# The 1939



MARGARET G. JENKINS

CONWAY, N. C.

*Grammar Grade Education*

YWCA 1, 2; Lanier Society 1, 2; Northampton Club  
President 3, A. C. E. 4.

MARGARET I. JENKINS

ROSEBORO, N. C.

*History and French*

Pinelond Junior College 1; Phi Sigma 3, 4; English Club  
3, 4; History Club 4.

CHRISTINE JERNIGAN

DUNN, N. C.

*Grammar Grade Education*

YWCA 1, 2, 3; Simpson County Club 1, 2; B. S. U.  
Council 2, A. C. E. 1, 2, 3; W. A. A. 1, 2, 3; Science  
Club 2, Poe Society 1, 2, 3; Music Club 1, 2, 3.

CHRISTINE JOHNSON

FOUR OAKS, N. C.

*Primary Education*

A. C. E. 1, 2, 3, 4

FRANCES JOHNSTON

LILLINGTON, N. C.

*Primary Education*

Campbell College 1, 2; YWCA 3, 4; A. C. E. 3, 4.

KATHERINE JOHNSON

ABERDEEN, N. C.

*English and French*

Wingate Junior College 1, 2; English Club 4; Phi Sigma 4.

# Seniors

# Tecoan

MARY DOMER JOHNSON

WHITAKERS, N. C.

*Grammar Grade Education*

Y.W.C.A. 1, 2, 3, 4.

PAULINE JOHNSON

BETHEL, N. C.

*Grammar Grade Education*

BETSY ANN JORDAN

SMITHFIELD, N. C.

*Primary Education*

Louisburg College 2; Lanier Society 1, 4; Y.W.C.A. 1, 4;  
A. C. E. 4

LOU NICHOLS JOYNER

GREENVILLE, N. C.

*Primary Education*

VIVA LOUISE KING

LITTLETON, N. C.

*Grammar Grade Education*

Class Play 2; President Senior Normal Class 2, S. G. A.  
President, Summer 3; Lanier Society 1, 2, 3, 4; Y.W.C.A.  
1, 2, 3, 4.

ZORA GILBERT KOONCE

COMFORT, N. C.

*Grammar Grade Education*



of 1939

# The 1939



VICTORIA KORNEGAY

SEVEN SPRINGS, N. C.

*Grammar Grade Education*



BERTHA PEARL LAMM

WILSON, N. C.

*Grammar Grade Education*

W. C. U. N. C. 1; Poe Society 3, 4; Y. W. C. A. 4.



DOROTHY LASSITER

WOODLAND, N. C.

*Home Economics and Science*

Y. W. C. A. 1, 2; Science Club 2, 3, 4; Home Economics Club 2, 3, 4; Glee Club 1, 2, 3, 4



RENNIE LASSITER

JACKSON, N. C.

*Home Economics and Science*

Home Economics Club 3, 4; Emerson Society 1, 2, 3, 4.



BIRMA LEE

ARAPAHOE, N. C.

*Grammar Grade Education*

Poe Society 1, 2, 3, 4; W. A. A. 2, 3, 4; Y. W. C. A. 1, 2, 3, 4



HELEN LEE

SELMA, N. C.

*Home Economics and Science*

Poe Society 1, 2, 3, 4; Science Club 2, 3, 4; Home Economics Club 2, 3, 4, Secretary 3

# Seniors

# TECOAN

H. LUCILLE LEWIS

WILMINGTON, N. C.

*Mathematics and Commerce*

TECOAN Representative 1; Emerson Society 1; Associate Editor TECO ECHO 2; Associate Editor TECOAN 3; Budget Committee 3, 4; Publications Board 3; Math Club 3, 4; Commerce Club 3, 4; Student Treasurer 4; House Proctor 4, Class President 4; Senior Class Superlative 4; Feature 4.

MARY EURE LILLEY

GATESVILLE, N. C.

*Primary Education*

Poe Society 1, 2, 3, 4; WAA 3, 4; Y.W.C.A. 4; A C E 3, 4.

MARGIE LLOYD

HILLSBORO, N. C.

*Grammar Grade Education*

Poe Society 1, 2, 3, 4; Y.W.C.A. 1, 2, 3, 4

ANNIE LAURA LOVE

WINGATE, N. C.

*History and English*

Wingate Junior College 1, 2; Western Carolina Teachers College 3.

VELMA ELIZABETH LOVE

WINGATE, N. C.

*Primary Education*

Wingate Junior College 1, 2; Western Carolina Teachers College 3.

RUTH LOWERY

TRENTON, N. C.

*Grammar Grade Education*

Math Club 1; W. A. A. 1, 2.



of 1939

# The 1939



RUTH LUTHER

ELEAZER, N. C.

*History and English*



MELBA L. MARTIN

JAMESVILLE, N. C.

*History, English, French*



BLANCHE MASSEY

RUFFIN, N. C.

*Primary Education*



RUTH RUSSELL MASSEY

ZEBULON, N. C.

*English and History*



DAISY BELLE MAULTSBY

BOLIVIA, N. C.

*Primary Education*

Flora Macdonald College 1, 2; Poe Society 3, 4



LESSIE MAY

SPRING HOPE, N. C.

*Primary Education*

Lanier Society 1, 2, 3, 4; Science Club 2; Y.W.C.A. 3, 4;  
A. C. E. 4; Proctor 4.

# Seniors

# Tecoan

## GERALDINE MAYO

MESICO, N. C.

*Home Economics and Science*

Science Club 1, 2, 3, 4; Home Economics Club 4; Y.W.C.A. 4; Emerson Society 1, 2, 3, 4.

## RUTH MAYO

LUCAMA, N. C.

*Grammar Grade Education*

Y. W. C. A. 1, 2; Lanier Society 1, 2, 3, 4; W. A. A. 4; A. C. E. 4; Presbyterian Student Association 3, 4

## MAUDE MELVIN

SALEMBURG, N. C.

*Primary Education*

Pineland Junior College 1, 2; Greensboro College 3, Glee Club 4; Poe Society 4; Senior Class Superlative 4.

## EVELYN MIDGETT

RODANTHE, N. C.

*Grammar Grade Education*

Lanier Society, 2, Y.W.C.A. 3

## ANNA O. MOORE

TURKEY, N. C.

*French and History*

## NAIOMA MOORE

MARSHVILLE, N. C.

*Primary Education*

W.C.U.N.C. 1, 2; A. C. E. 3, 4; Emerson Society 3, 4



of 1939



# The 1939



MARTHA MORRISON

CLIO, S. C.

*Grammar Grade Education*



MINNIE GERTRUDE MORTON

GREENVILLE, N. C.

*Home Economics and Science*

Home Economics Club 2, 3, 4; Vice-President 3; Delegate to N. C. Home Economics Club Convention 3; Science Club 2, 3, 4.



MARY ETTA MOSLEY

KINSTON, N. C.

*Primary Education*

WCUNC 1, 2, A C E 3, 4



BETTY McARTHUR

FAYETTEVILLE, N. C.

*Primary Education*

Peace College 1, 2; Y.W.C.A. Cabinet 4; P. S. A. 4; A C E 4.



HELEN McCAIN

LANCASTER, S. C.

*Grammar Grade Education*

Montreat College 1, 2; Glee Club 3, 4; College Band 3; A C E 3, 4; Vice-President 4; TECO ECHO Staff 4; Y.W.C.A. 4; P. S. A. 3, 4; Delegate to N.C.C.P.A. 4.



MILDRED McDONALD

FOREST CITY, N. C.

*Home Economics and Science*

Junior "Y" Cabinet, President 1; Y.W.C.A. 1, 2, 3, 4, Secretary 2; Y.W.C.A. Cabinet 2; S. S. C. Delegate 1; State "Y" Delegate 1, 2; B. S. U. Council 2; Emerson Society 1, 2, 3, 4; Home Economics Club 2, 3, 4; Science Club 2, 3, 4; TECO ECHO Staff 1, TECOAN Staff 2, Business Manager TECOAN 3; N.C.C.P.A. Delegate 2, 3; Publications Board 2, 3; Budget Committee 2, 3; Feature 2; Social Committee 4; WHO'S WHO IN AMERICAN COLLEGES AND UNIVERSITIES 4.

# Seniors

# Tecoan

## HELEN MCGINNIS

GREENVILLE, N. C.

*Commerce and English*

English Club 2, 3, 4; Dramatic Club 3, 4, President 4; Commerce Club 3, 4.

## THELMA WOOD NEWSOME

HARRELLSVILLE, N. C.

*Primary Education*

Poe Society 1.

## REBECCA NICHOLSON

FRANKLINTON, N. C.

*Primary Education*

Class Vice-President 1; TECO ECHO Reporter 2; TECOAN Representative 3; Lanier Society 1, 2; A. C. E. 2, 3, 4, President 3, 4; M. S. A. Cabinet 3, 4; Proctor 3, 4; Senior Class Superlative 4.

## MARGARET GUY OVERMAN

ELIZABETH CITY, N. C.

*French and English*

Lanier Society 1, 2, 3, 4, Vice-President 2, President 3, Marshal 3; Phi Sigma 3, 4, President 4; English Club 2, 3, 4; W. A. A. 1; Y.W.C.A. 3; TECO ECHO Reporter 3, Associate Editor TECO ECHO 4; TECOAN Representative 4; Ki Pi Players 4.

## NANCY PAGE

TRENTON, N. C.

*Commerce and French*

Greensboro College 1; Poe Society 2, 3, 4; Orchestra 2, 3; Cheer Leader 3; Y.W.C.A. 4; Phi Sigma 4; Glee Club 4; Commerce Club 4; TECO ECHO 2, 3; Senior Play 4.

## MAVIS PARKER

GREENVILLE, N. C.

*Grammar Grade Education*

Poe Society 2, 3, 4; W. A. A. 1, 2, 3, 4; Varsity Basketball 2.



of 1939

# The 1939



LILLIAN PARRISH

ROCKY MOUNT, N. C.

*Home Economics and Science*

Lanier Society 1, 2, 3, 4; Treasurer 2; Y.W.C.A. 1, 2, 3, 4, Y.W.C.A. Cabinet 4, Class Secretary 2; Proctor 2; Science Club 2, 3, 4, Vice-President 3; Home Economics Club 2, 3, 4; S. G. A. 3, 4, President 4; Delegate to S.I.A.S.G. 3; Delegate to N.C.F.S.G. 3; Delegate to N.S.F.A. 4; Senior Class Superlative 4, WHO'S WHO IN AMERICAN COLLEGES AND UNIVERSITIES 4



LEONA MAIE PARSONS

MAYSVILLE, N. C.

*Primary Education*

Campbell College 1, 2, A. C. E. 4, Y.W.C.A. 4, Poe Society 3, 4.



CORA LEE PATTERSON

FARMVILLE, N. C.

*Primary Education*

Atlantic Christian College 1; Y.W.C.A. 2; Emerson Society 2, 3, 4; Marshal 3, A.C.E. 3, 4; Feature 3; Senior Class Superlative 4.



INA MAE PEARCE

MICRO, N. C.

*English and History*

Y.W.C.A. 1, 2, 4; Poe Society 1, 2, 4; Pianist B. S. U. 2, 3; English Club 2, 3, 4; History Club 3, 4; TECO ECHO Reporter 3, Associate Editor 4; Proctor 3; Bond 3, 4; President B. S. U. 4



RUTH PEARCE

COLERAIN, N. C.

*Primary Education*

Poe Society 1, 2, Y.W.C.A. 3, Proctor 3



NELL PERRY

BAILEY, N. C.

*History and English*

Lanier Society 1, 2, 3, 4; Class Vice-President 1; Y.W.C.A. 1, TECO ECHO Reporter 3; TECOAN Staff 4; S. G. A. 4, Senior Class Superlative 4; Feature 4

# Seniors

# Tecoan

## DORIS PHELPS

COLERAIN, N. C.

### *Primary Education*

Poe Society 2; Y.W.C.A. 2; College Band 3

## MELBA PHELPS

LA GRANGE, N. C.

### *Grammar Grade Education*

Y.W.C.A. 1, 2, 4; A. C. E. 4; Music Club 3; College Band 4; Orchestra 4; M. S. A. 3, 4.

## RUTH ELEANOR PARKER

GEORGE, N. C.

### *Physical Education and Science*

Y.W.C.A. 1, 4; W. A. A. 1, 2, 3, 4, Varsity Basketball 1, 2, 3, 4, Tennis 3; Math Club 1; Science Club 4; Lanier Society 1, 2, 3, 4.

## MARGARET RATLIFF

WADESBORO, N. C.

### *Primary Education*

Emerson Society 1, 2, 3, 4; M. S. A. 2, 3; A. C. E. 3, 4

## JUANITA RHODES

ZEBULON, N. C.

### *Grammar Grade Education*

Emerson Society 1, 2, 3, 4

## VIVIA RIVES

ENFIELD, N. C.

### *Grammar Grade Education*

Emerson Society 1, 2, 3, 4; Y.W.C.A. 1; Proctor 2; S. G. A. 3; B. S. U. Council 4.



of 1939

# The 1939



IBERIA ROACH

RUTHERFORDTON, N. C.

*Home Economics and Science*

YWCA 1, 2, 3, 4; Emerson Society 1; Science Club 2, 3, 4, Home Economics Club 2, 3, 4, Treasurer 3, President 4.



IDA ROBERTS

SHAWBORO, N. C.

*Home Economics and Science*

YWCA 2, 3; Emerson Society 1, 2, 3; Home Economics Club 2, 3; Science Club 2, 3; B. S. U. Council 3; S. G. A. 3.



VERLIE ROBERTS

MARSHALL, N. C.

*Home Economics and Science*



MARENA ROSE ROBINSON

WILMINGTON, N. C.

*Primary Education*

Emerson Society 1, 2, 3, 4; Y.W.C.A. 2, 3; A. C. E. 3, M. S. A. 2, 3, 4.



VERA DARE ROUSE

WINTERVILLE, N. C.

*Home Economics and Science*



ALMA EVELYN RUFFIN

BAILEY, N. C.

*Grammar Grade Education*

Lanier Society 1, 2; W. A. A. 3, 4; TECO ECHO Reporter 4; A. C. E. 4.

# Seniors

# Tecoan

IDA FAYE SANDERSON

BURGAU, N. C.

*Grammar Grade Education*

Campbell College 1, 2; Y.W.C.A. 4; A. C. E. 4

MARY LOUISE SAUNDERS

NASHVILLE, N. C.

*Home Economics and Science*

Home Economics Club 2, 3, 4; Science Club 2, 3, 4

BERGERNETTER SHEPARD

WILMINGTON, N. C.

*Primary Education*

Emerson Society 1, 2; A. C. E. 3; Y.W.C.A. 1.

MARY THOMAS SMITH

GREENVILLE, N. C.

*Grammar Grade Education*

Poe Society 1, 2, 3, 4.

TREXIE SOWERS

LEXINGTON, N. C.

*Primary Education*

Catawba College; Science Club 2; Poe Society 2, 4; Proctor 2; A. C. E. 4; Y.W.C.A. 4; Dramatics Club 4.

SUE WILLIAMS SPEED

FRANKLINTON, N. C.

*Grammar Grade Education*

Class President 1; Y.W.C.A. 2, 3; Lanier Society 1, 2, 3, 4; Marshal 2, 3; Business Staff TECO ECHO 2; Editorial Staff TECOAN 3; M. S. A. 2, 3; A. C. E. 3, 4.



of 1939

# The 1939



SARAH DARLENE STEPHENSON

ANGIER, N. C.

*Grammar Grade Education*

Poe Society 1, 2, 3, 4, YWCA 1, Junior "Y" Cabinet 1



MARY BLANCHE STRICKLAND

MIDDLESEX, N. C.

*Home Economics and Science*



MAUDE MALEEN STRICKLAND

BELLARTHR, N. C.

*Grammar Grade Education*

Poe Society, 1, 2



JEANNE STUBBS

BEAUFORT, N. C.

*French and English*

Louisburg College 1, 2; Phi Sigma 3, 4.



GEORGIA SUGG

HOOKERTON, N. C.

*English and History*

YWCA 1, 2, 3, 4, Treasurer 3, YWCA Cabinet 3, Junior "Y" Cabinet 1; Poe Society 1, 2, 3, 4; Marshal 3, English Club 1, 2, 3, 4, Secretary 3, Associate Editor TECO ECHO 1, 2, 3; Publications Board 3, History Club 4; Verse Speech Choir 3, 4.



PAULINE SUGGS

OLD DOCK, N. C.

*Grammar Grade Education*

YWCA 3, 4

# Seniors



# Tecoan

DOROTHY TANT

SPRING HOPE, N. C.

*Grammar Grade Education*

Poe Society 1, 2, 3; Y.W.C.A. 4; A. C. E. 4

EMILY GREEN TAYLOR

WHITAKERS, N. C.

*Primary Education*

RUTH M. TAYLOR

TARBORO, N. C.

*Primary Education*

Poe Society 1, 2, 3, 4; A. C. E. 3, 4.

CHRISTINE TEW

CLINTON, N. C.

*Home Economics and Science*

Emerson Society 1, 2, 3, 4; Science Club 2, 3, 4; Home Economics Club 2, 3, 4; Y.W.C.A. 4; Class Vice-President 2; S. G. A. 2.

MARIE THARRINGTON

ROCKY MOUNT, N. C.

*Grammar Grade Education*

Meredith College 1, 2; Y.W.C.A. 3, 4; A. C. E. 3, 4

MYRTLE THOMPSON

SMITHFIELD, N. C.

*Grammar Grade Education*

Dramatics Club 3, 4.



of 1939

# The 1939



ELIZABETH WHICHARD THIGPEN

FLORENCE, S. C.

*Primary Education*

Furman University 1, 2, Y W C A 3, 4, A C E 3, 4.



MARJORIE TOPPING

BELHAVEN, N. C.

*Home Economics and Science*

Science Club 2, 3, 4; Home Economics Club 2, 3, 4; Y W C A 1, 4; Junior "Y" Cabinet 1; Lonier Society 1.



MARGARET TREXLER

WADESBORO, N. C.

*Primary Education*

Lonier Society 1, 2, 3, 4; W. A. A. 1, 2, 3, 4, Secretary 3, President 4; Basketball 1, 3; Proctor 3; A C E 3, 4

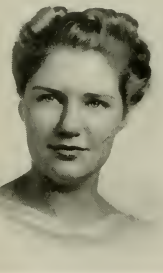


DORIS TUCKER

GREENVILLE, N. C.

*English and History*

Poe Society 1, 2, 3, 4; English Club 2, 3, 4; Class Secretary 3, History Club 4.



RUTH HAYES TURNAGE

FARMVILLE, N. C.

*Home Economics and Science*

Science Club 2, 3, 4, Home Economics Club 2, 3, 4; Emerson Society 1, 2, 3, 4; Social Committee 4; Entertainment Committee 4.



DELLA UNDERWOOD

ST. PAULS, N. C.

*Grammar Grade Education*

Pineblond Junior College.

# Seniors

# Recwan

## IRENE UZZELL

MAYSVILLE, N. C.

### *French and English*

Y.W.C.A. 1, 4; Junior "Y" Cabinet 1, Puer Society 1, 2, 3, 4, President 3, Marshal 2, Chief Marshal 4, Phi Sigma 3, 4; English Club 3, 4; Proctor 3; Dramatics Club 4

## BLANCHE VAN DYKE

HENDERSON, N. C.

### *Grammar Grade Education*

W. A. A. 1, 2, 3; Tennis 1, 2, Basketball 1, 2, 3, Lanier Society 1, 2, 3; Y.W.C.A. 1, 2, 3; Junior Executive Council 3, Junior Play.

## JULIA VAN LANDINGHAM

SCOTLAND NECK, N. C.

### *Primary Education*

Emerson Society 1, 2, 3, 4, A. C. E. 3, 4, Group Leader 3, 4, Executive Council 4, P. S. A. 1, 2, 3, 4; Proctor 3, Y.W.C.A. 1, 4.

## MARGUERITE VAUSE

LA GRANGE, N. C.

### *Home Economics and Science*

Y.W.C.A. 1, 2; Home Economics Club 2, 3, 4, President 3; Science Club 2, 3, 4, Secretary 4.

## MARGARET SUE WATKINS

OXFORD, N. C.

### *Primary Education*

A. C. E. 3, 4; Vice-President Gronville County Club 2; President Senior Normal Class, Summer 2

## MIRIAM WALKER

HILLSBORO, N. C.

### *Grammar Grade Education*



of 1939

# The 1939



MARJORIE WATSON

WILSON, N. C.

*Primary Education*

Y.W.C.A. 1, 2, 3, 4; Junior "Y" Cabinet 1; Lanier Society 1, 2, 3, 4; Marshal 4; Class President 2; TECO ECHO Business Staff 2, Business Manager 3; N.C.C.P.A. 2, 3, Publications Board 2, 3; A. C. E. 3, 4, Feature 4

NELLIE WEBB

PINETOPS, N. C.

*Grammar Grade Education*

Emerson Society 1, 2, 3, 4; W. A. A. 1, 2, S. G. A. 1, Secretary, Summer 1; Y.W.C.A. 3; Marshal 4; TECOAN Representative 4



FRANCES WEEKS

TARBORO, N. C.

*Home Economics and Science*

Y.W.C.A. 1, Junior "Y" Cabinet 1, Poe Society 1, 2, 3, 4, Home Economics Club 2, 3, 4; Science Club 2, 3, 4

BEULAH B. WHITE

TYNER, N. C.

*Home Economics and Science*

M. S. A. 2, 3, 4, Cabinet 3; M. S. A. Delegate 3, 4, Town Girls Club 1, 2, 3, Home Economics Club 2, 3, 4; Science Club 1, 2, 3, 4, Secretary 3; Y.W.C.A. 4; Chowan County Club 1, 2, 4, Secretary 1, Vice-President 2.



CAROLYN WHITE

ZEBULON, N. C.

*Grammar Grade Education*

Music Club 4.

INEZ WHITMAN

GREENVILLE, N. C.

*Grammar Grade Education*

# Seniors

# Tecoan

## MARY ELIZABETH WILDER

FRANKLINTON, N. C.

*History and English*

English Club 2, 3, 4; History Club 3, 4; Y.W.C.A. 4; Dramatic Club 3, 4; Speech Choir 3, 4; Emerson Society 1, 2, 3, 4, English Club 4.

## MARY V. WILLIAMS

ZEBULON, N. C.

Y.W.C.A. 1; A. C. E. 4; Glee Club 3, 4.

## DOLLY WILLIAMSON

CERRO GORDO, N. C.

*Grammar Grade Education*

Emerson Society 1.

## EMMIE COBB WILSON

NEW BERN, N. C.

*Home Economics and Science*

Science Club 2, 3, 4; Home Economics Club 2, 3, 4, Treasurer 4; Emerson Society 1, 2, 3, 4; Y.W.C.A. 1, 2, 4.

## EVELYN WILSON

TARBORO, N. C.

*Primary Education*

W. A. A. 1; Lonier Society 1; A. C. E. 3, 4

## MARGARET WILSON

HENDERSON, N. C.

*English and French*

Y.W.C.A. 1, 2, 3, 4; Lonier Society 1, 2, 3, 4; English Club 2, 3, 4; Phi Sigma 2, 3, 4, Music Club 1, 2, 3, President, Pi Kappa Players 4



of 1939

# The 1939



RUBY WINSTEAD

ROCKY MOUNT, N. C.

*Grammar Grade Education*

Y. W. C. A. 4; A. C. E. 4.

ROSA WOMACK

BROADWAY, N. C.

*History and English*



SUSIE WOODRUFF

ENFIELD, N. C.

*Primary Education*

Poe Society 1, 2, 3, 4.

MABEL WORLEY

FAIR BLUFF, N. C.

*Home Economics and Science*

Home Economics Club 1, 2, 3, 4, Science Club 1, 2, 3, 4,  
Treasurer 4; Emerson Society 1, 2, 3, 4; May Queen At-  
tendant 4.



PAULINE WORTHINGTON

WINTERVILLE, N. C.

*Grammar Grade Education*

# Seniors

# Tecoan

ADRIAN AYERS  
ROCKY MOUNT, N. C.

Varsity Club 1, 2, 3, 4; President 3; Boxing 1; Baseball 1, 2, 3, 4; Basketball 1, 2, 3, 4; Football 1, 2, 3, 4; History Club 3, 4.

LEO BURKS, JR.  
GREENVILLE, N. C.

*Science and English*

Band 3; Orchestra 1, 2, 3; Glee Club 3, 4; Tennis 3, 4; Phi Sigma Pi 2, 3, 4, Secretary 4; Associate Editor TECO ECHO 1, 2, 3; English Club 3; Speech Choir 3, 4.

GORDON L. CLARKE  
GREENVILLE, N. C.

*History and Science*

Elan College; Pitt County Club 1; Emerson Society 1.

CHARLES COBB  
GREENVILLE, N. C.

*Science and Social Science*

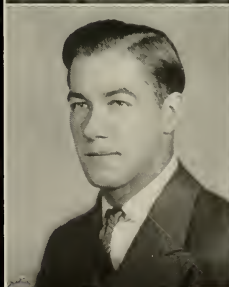
Duke University

GERALD G. DeMOND  
WILLET, NEW YORK

*History and Science*

THOMAS DENNIS  
GREENVILLE, N. C.

Baseball 2; Football 1, 2, 3, 4; Varsity Club 2, 3, 4.



of 1939



# The 1939



**BOLEY FARLEY**  
GREENVILLE, N. C.

Duke University, Springfield College



**FODIE H. HODGES**  
GRIMESLAND, N. C.

*Science and History*

Science Club 2, 3, 4, Treasurer 3, Publicity Manager 4, Poe Society 2, 3, 4; Basketball 3, 4; Phi Sigma Pi 2, 3, 4; Historian 3, President 4; Delegate to National Phi Sigma Pi Convention, Chairman of Chapel Committee 4, MSGA 4, Vice-President; Delegate to N.C.S.G.F. 3; Delegate to NSF A 4; Pitt County Club 1, 2, 3, 4, President 2; History Club 3, 4, Glee Club 2, 3, 4; Senior Play 4; Senior Class Superlative 4



**BILL HOLLAND**  
FUQUAY SPRINGS, N. C.

*History and Social Science*

Football 1, Baseball 1, 2, 3, Varsity Club 1, 2, 3, 4, Vice-President 4, Varsity Club Minstrel 1.



**HAMPTON NOE**  
WILMINGTON, N. C.

*Science and History*

Citadel 1, Science Club 2, 3, 4, History Club 3, 4, Football 2.



**C. RAY PRUETTE**  
FOREST CITY, N. C.

*History and Science*

Science Club 1, 2, 3, 4; MSGA 2, 3, 4, Secretary 2; TECO ECHO Associate Editor 2, Editor 3; Publications Board 2, 3, 4; N.C.C.P.A. Delegate 2, 3; Phi Sigma Pi 2, 3, 4; History Club 3, 4; Lanier Society 2, 3, 4; TECO ECHO Exchange Editor 4; WHO'S WHO IN AMERICAN UNIVERSITIES AND COLLEGES 4.



**LESTER RAY RIDENHOUR**  
COOLEEMEE, N. C.

*Physical Education and History*

Varsity Club 2, 3, 4, Vice-President 2, 3, Football 1, 2, 3, 4, Captain 2, 4; Basketball 1, 2, 3, 4, Captain 2, 3, Baseball 1, 2, 3, 4, Captain 3; Tennis Champion 1; Sports Editor TECO ECHO 2; Publications Board 3, MSGA, President 4.

# Seniors

# Tecoan

LLOYD H. SANDLIN

*English and Science*

Textile Junior College 1; Appalachian State Teachers College 2, 3; English Club 4.

EARL SMITH

SELMA, N. C.

*Physical Education and History*

N. C. State College 1; Campbell College 2; Football 3, 4; Baseball 2, 3, 4; Basketball 3, 4; Varsity Club 2, 3, 4.

STANLEY SCARBOROUGH

GRIFTON, N. C.

*Mathematics and Science*

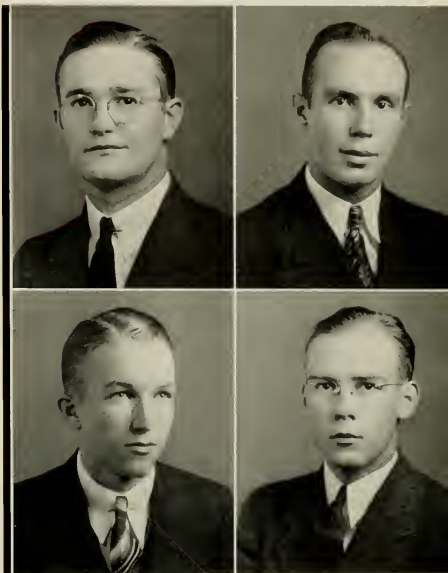
Math Club 1; Science Club 2; Assistant Manager Football 2; Manager Basketball 2; Manager Baseball 2.

WILLIAM B. WHITEHURST

BETHEL, N. C.

*Mathematics and Commerce*

Commerce Club 2; Poe Society 1, 2.



of 1939

## SENIOR SUPERLATIVES



LUCILLE LEWIS, Most Versatile, Most Intellectual,  
Best Leader, Best All-Round  
MAUDE MELVIN, Most Talented

LOUISE FREEMAN, Most Individual  
LEO BURKS, Best Dancer

DOROTHY STEADMAN, Best Dressed  
JOYCE HARRELL, Most Capable

## SENIOR SUPERLATIVES

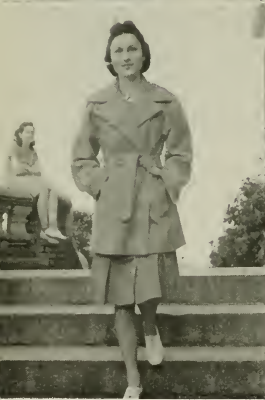


LILLIAN PARRISH, Most Popular  
SELLASTINE HUGHES, Wittiest

SARAH STEPHENSON, Cutest  
LEX RIDENHOUR, Most Athletic

EMILY BRENDLE, Most Dependable  
CORA LEE PATTERSON, Prettiest

## SENIOR SUPERLATIVES



SUE SPEED, Most Studious

REBECCA NICHOLSON, Most Friendly

PETE HILL, Most Original

NELL PERRY, Best Personality

DORIS HOLLOWELL, Most Athletic

FODIE HODGES, Best Dressed, Most Handsome



# Juniors

Our class feels fortunate in having as its leader for three years, Clifton Britton.

The three years have been crowded with events possible only through the cooperation of the entire class. The winter wonderland of the Sophomore-Senior, the array of costumes of the masquerade ball, and the success of "The Arrival of Kitty" and "Sunshine" are activities of which we may well be proud.

## OFFICERS

CLIFTON BRITTON .....	President
PRUE NEWBY .....	Vice-President
MARION REED .....	Secretary
LINDSAY WHICHARD .....	Treasurer



CLIFTON BRITTON



PRUE NEWBY



MARION REED



LINDSAY WHICHARD

# Junior Class

Julius Abernathy, Jr.  
Nashville, N. C.

Margaret Adcock  
Greenville, N. C.

Evelyn Aiken  
Snow Hill, N. C.

J. F. Allen  
Ayden, N. C.

Margaret Allen  
Youngsville, N. C.

Marion Allen  
Hester, N. C.

Alice Alligood  
Foyetteville, N. C.

Vileigh Austin  
Willow Springs, N. C.

Mary Tribble Bailey  
Kinston, N. C.

Evelyn Baker  
Washington, N. C.

Sybil Barker  
Fuquay Springs, N. C.

Mildred Barnes  
Severn, N. C.

Lucy Ann Barrow  
La Grange, N. C.

Marie Baysden  
Richlonds, N. C.

Anna Laurie Beale  
Pendleton, N. C.

Lucille Bell  
Rocky Mount, N. C.

Tompy Benton  
Indian Trail, N. C.

J. D. Biggs  
Washington, N. C.

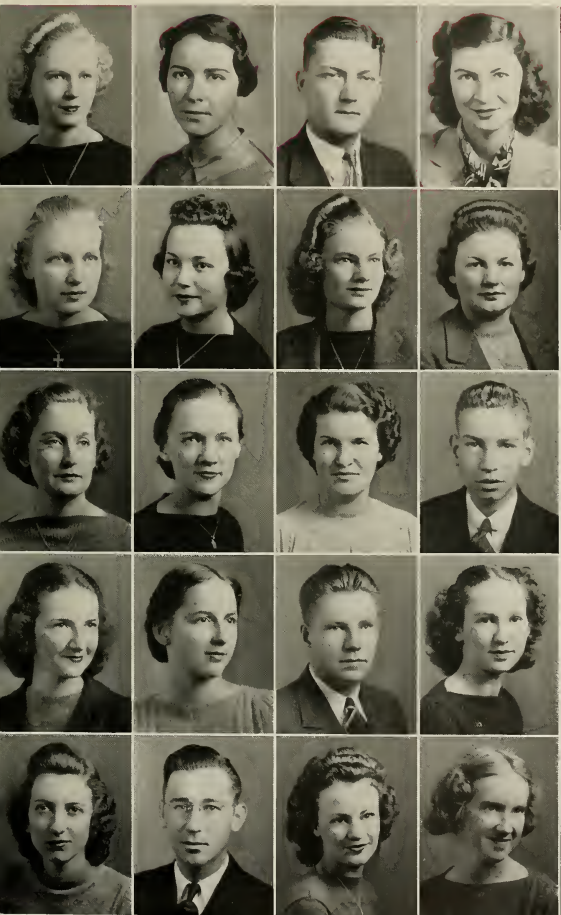
Camilla Bissette  
Wilson, N. C.

Bettie Blanchard  
Wallace, N. C.





# 1939 *Tecoan*



Doris Anne Blanchard  
Sunbury, N. C.

Rachel Blanchard  
Greenville, N. C.

Elmer Lee Bland  
Bethel, N. C.

Annie Hart Boone  
Pendleton, N. C.

Louise Boone  
Jackson, N. C.

Mamie Lee Boyd  
Lane, S. C.

Virginia Lee Boyette  
Wilson, N. C.

Harriett Omega Bradshaw  
Rose Hill, N. C.

Alice Bragg  
Franklinton, N. C.

Nell Breedlove  
Oxford, N. C.

Aileen Brewer  
Marshville, N. C.

John David Bridgers  
Greenville, N. C.

Jennie Mae Brinkley  
Colerain, N. C.

Albertine Brinsan  
Pollocksville, N. C.

Gilbert Britt  
Conway, N. C.

Margueritte Britt  
Mt. Olive, N. C.

Sarah Britt  
Wendell, N. C.

Clifton Britton  
Milwaukee, N. C.

Mary Louise Britton  
Conway, N. C.

Maxie Broadwell  
Winterville, N. C.

# Junior Class

Donald P. Brock  
Trenton, N. C.

Estelle Broda  
Beaufort, N. C.

Mary Elizabeth Brown  
Woodland, N. C.

Sybil Brown  
Comfort, N. C.

Virginia Bryan  
Wilmington, N. C.

Flora Neill Bullock  
Autryville, N. C.

Pennie Burkett  
Roxobel, N. C.

Doris Burney  
Lumberton, N. C.

Sudie Butler  
Clinton, N. C.

Mary Lou Butner  
Greenville, N. C.

Mary Frances Byrd  
Wilmington, N. C.

Lure Caison  
Roseboro, N. C.

Esther Marie Carmack  
Richlands, N. C.

Ursula B. Carr  
Formville, N. C.

Eva Carolyn Carter  
Warsaw, N. C.

Vance Chadwick  
Stroits, N. C.

Lila June Chandler  
Goumsboro, N. C.

Camille B. Clarke  
Lake Landing, N. C.

Evelyn Clark  
Grimesland, N. C.

Cecelia Cobb  
Merry Hill, N. C.



# 1939 *Tecoa*



Katrine Collie  
Spring Hope, N. C.

Mary Lyan Coppersmith  
Littleton, N. C.

Vergie Coward  
Merry Hill, N. C.

Kathleen Crawford  
Pikeville, N. C.

Virginia Crawford  
How River, N. C.

Barbara Edna Creech  
Snow Hill, N. C.

Ernestine Creech  
Clayton, N. C.

Margaret Crowell  
Statesville, N. C.

Eunice Cullipher  
Merry Hill, N. C.

Margueritte Currin  
Oxford, N. C.

Frances J. Cutchin  
Washington, N. C.

Josephine Daniel  
Stem, N. C.

Anita Daughtridge  
Rocky Mount, N. C.

Syble Daughtry  
Rich Square, N. C.

Ida Farrior Davis  
Burgaw, N. C.

Iris Davis  
Stantonsburg, N. C.

Mayme Davis  
Seaboard, N. C.

Page Davis  
Milwaukee, N. C.

Winnie Ruth Davis  
Fremont, N. C.

Harvey Deal  
Greenville, N. C.

# Junior Class

Beatrice Dean  
Wendell, N. C.

Doris Dobson  
Kenansville, N. C.

Howard Draper  
Conway, N. C.

Millie Gray Dupree  
Angier, N. C.

Mary Eakes  
Greenville, N. C.

Lucille Edge  
Lumberton, N. C.

Atha Lea Edmundson  
Pikeville, N. C.

Mabel L. Edwards  
Henderson, N. C.

Juanita Etheridge  
Whitakers, N. C.

Elizabeth Everett  
Greenville, N. C.

Mary Goodwin Ferebee  
Camden, N. C.

Helen Flannagan  
Greenville, N. C.

Kathryne Fleetwood  
Edenton, N. C.

Edith Forrest  
Greenville, N. C.

Ruth Frazelle  
Richlands, N. C.

Elizabeth Fussell  
Rose Hill, N. C.

Hazel Gainey  
Dunn, N. C.

Mildred Gammon  
Whitakers, N. C.

Phillip Garris  
Ayden, N. C.

Ethel Gaston  
Greenville, N. C.





# 1939 *Tecoan*



Mary Hellon Geddie  
Fayetteville, N. C.



Esther Giles  
Lenden, N. C.



Helen Gray Gillam  
Windsor, N. C.



Geraldine Glover  
Wilson, N. C.



John Glaver  
Morehead, N. C.



Edith Mae Grant  
Gorysburg, N. C.



Rebecca Grant  
Gorysburg, N. C.



Mary Iva Gay  
Zebulon, N. C.



Charles F. Green  
Wilmington, N. C.



Dorothy Greene  
Roanoke Rapids, N. C.



Aleta Jones Griffin  
Summerfield, N. C.



Marguerite W. Guard  
Coinjock, N. C.



Mary Helen Gulledge  
Jackson, N. C.



Myldred Gupton  
Essex, N. C.



Meta Virginia Hammond  
Andrews, S. C.



Marguerite Hardee  
Greenville, N. C.



Charles Davis Harris  
Marshallberg, N. C.



Christine Harris  
Thomasville, Tenn.



Edith W. Harris  
Louisburg, N. C.



Edward Harris  
Greenville, N. C.

# Junior Class

Geraldine Harris  
Greenville, N C

Ruth Hawkes  
Willow Springs, N C

Venetia Hearne  
Greenville, N C

Marjorie Heath  
Newport, N C

Faye Helms  
Unionville, N C

Lillian Hicks  
Bullock, N C

Rosena Hicks  
Oxford, N C

Rosaline High  
Wendell, N C

Cornelia Hill  
Murfreesboro, N C

India Hill  
Benson, N C

Joyce Elaine Hill  
Ayden, N C

Jennie Hinson  
Stanfield, N C

Maude Emma Hinson  
Greenville, N C

Maggie Pearl Hoggard  
Harrellsville, N C

Miriam Hoggard  
Lewiston, N C

Olga Haggard  
Lewiston, N C

Dorothy Hallar  
Greenville, N C

Mary Peace Howard  
Salemberg, N C

Lucy Hudgins  
Sunbury, N C

Cassie Hudson  
Pantego, N C



# 1939 *Tecoan*



Ralph Hutchinson  
Rockingham, N. C.

Marguerite Hutchinson  
Rockingham, N. C.

Gladys Ipock  
Ernul, N. C.

Josephine Jackson  
Godwin, N. C.

Mattie Lee Jackson  
Lumberton, N. C.

Edna James  
Burgaw, N. C.

Margaret Jarvis  
Moyock, N. C.

Evelyn Jernigan  
Goldsboro, N. C.

Lucille H. Johnson  
Ayden, N. C.

Mary Parker Johnson  
Goldsboro, N. C.

Myrtis Johnson  
Roseboro, N. C.

Sulou Johnson  
Kenly, N. C.

Thadys Elaine Johnson  
Pendleton, N. C.

Anna Jones  
Farmville, N. C.

James Joyner  
Greenville, N. C.

Vera Joyner  
Louisburg, N. C.

Mary Jean Kallam  
Lawsonville, N. C.

Mary Esther Koonce  
Richlands, N. C.

Carolyn Lambe  
Pantega, N. C.

Frances Lambe  
Pantega, N. C.



# Junior Class

Louise Latham  
Mocksville, N. C.

Shirley Latham  
Bath, N. C.

Margaret Lawrence  
Tarboro, N. C.

Audrey Lee  
Arapohoe, N. C.

Belma Lee  
Arapohoe, N. C.

Katherine Parrish Lewis  
Enfield, N. C.

Elsie Lilley  
Eure, N. C.

Elsie Liverman  
Greenville, N. C.

Clara Nell Maness  
Buies Creek, N. C.

Willine Maness  
Troy, N. C.

Edith Martin  
Red Oak, N. C.

Kelly Martin  
Conway, N. C.

Sidney Mason  
Bath, N. C.

Edna Matthews  
Sauford, N. C.

Mary Ellen Matthews  
Apex, N. C.

Sarah Ann Maxwell  
Pink Hill, N. C.

Annie Meadows  
Moyssville, N. C.

Leon Meadows, Jr.  
Greenville, N. C.

Thomas J. Meeks  
Bethel, N. C.

Iva Messick  
Lowland, N. C.



# 1939 *Tecoan*



Dorothy Reed Miller  
Wilmington, N. C.

Margaret Miller  
Merry Hill, N. C.

Myrtle Mitchell  
Kittrell, N. C.

Edna Moore  
Greenville, N. C.

Lottie Moore  
Kinston, N. C.

Margaret W. Moore  
Bethel, N. C.

La Rue Mooring  
Stokes, N. C.

Hilda Martin  
Rich Square, N. C.

Evelyn Myrick  
Littleton, N. C.

Katherine E. McClees  
Page, W. Va.

Katherine McDaniel  
Jackson, N. C.

Mary Louise McGaugan  
Tabor City, N. C.

Rose Lee McGowan  
Greenville, N. C.

Ora McHan  
Almond, N. C.

Anna McLawhorn  
Vanceboro, N. C.

Annie Ruth McMillan  
Wade, N. C.

Eva McMillan  
Godwin, N. C.

Frances Nance  
Bonlee, N. C.

Betty Neal  
Louisburg, N. C.

Anita Pauline Nelson  
Atlantic, N. C.

# Junior Class

Prue Newby  
Hertford, N. C.

Grace Newell  
Goldsboro, N. C.

Frances Newsome  
Wenton, N. C.

John C. Noe  
Bath, N. C.

Laura Oates  
Faison, N. C.

Edna Ogburn  
Angier, N. C.

Pauline Outlaw  
Seven Springs, N. C.

Mabel Owens  
Walstonburg, N. C.

Ethel Padgett  
Rocky Mount, N. C.

Eileen Pake  
Marshallburg, N. C.

Annie Laura Parker  
Pollocksville, N. C.

Hamer Vann Parker  
Murfreesboro, N. C.

Isabel Parker  
Speed, N. C.

Geraldine Pate  
Pollocksville, N. C.

Alton Payne  
Gull Rock, N. C.

Evelyn Pendergrass  
Tamahawk, N. C.

Mozelle Pernel  
Castalia, N. C.

Annie Louis Perry  
Merry Hill, N. C.

Mabel Lois Perry  
Powellsville, N. C.

Miriam Perry  
Colerain, N. C.



# 1939 *Tecoan*



Mary Frances Person  
Louisburg, N. C.

Maude Evans Phelps  
Ahoskie, N. C.

Hazel Irene Phillips  
Warsaw, N. C.

Ruth Phillips  
Wilson, N. C.

Laura Pittman  
Rocky Mount, N. C.

Isabel Pollard  
Virginia, N. C.

Julia Meredith Poole  
New Hill, N. C.

Magdalene Powell  
Fremont, N. C.

Lillian Price  
Pineville, N. C.

Lola Pritchard  
Seaboard, N. C.

Ruth Pritchard  
Elizabeth City, N. C.

Anna Belle Privott  
Edenton, N. C.

Valeria Reardon  
Buies Creek, N. C.

Marion Reed  
Elizabeth City, N. C.

Margaret Rice  
Pine Bluff, N. C.

Gladys Richardson  
Kenly, N. C.

Elizabeth Rivers  
New Bern, N. C.

Virginia Rogers  
Mebane, N. C.

Audrey Salter  
Sea Level, N. C.

Emmett Sawyer  
Belcross, N. C.

# Junior Class

Miriam Sawyer  
Elizabeth City, N. C.

Rena Sessoms  
Roseboro, N. C.

William Shelton  
Donville, Va.

Barbara Smith  
Atlantic, N. C.

Cornelia Ann Smith  
Jackson, N. C.

Mabel Smith  
Fuquay Springs, N. C.

Mavil Smith  
Mognolia, N. C.

Virginia Dare Smith  
Robersonville, N. C.

Julia Spencer  
Swon Quarter, N. C.

Stella Ray Spencer  
Scranton, N. C.

Nellie Blanche Stanford  
Roper, N. C.

Ethel Stephenson  
Willow Springs, N. C.

Hilda Stephenson  
Kelford, N. C.

Walter Stevens  
Goldsboro, N. C.

Kathleen Strickland  
Nashville, N. C.

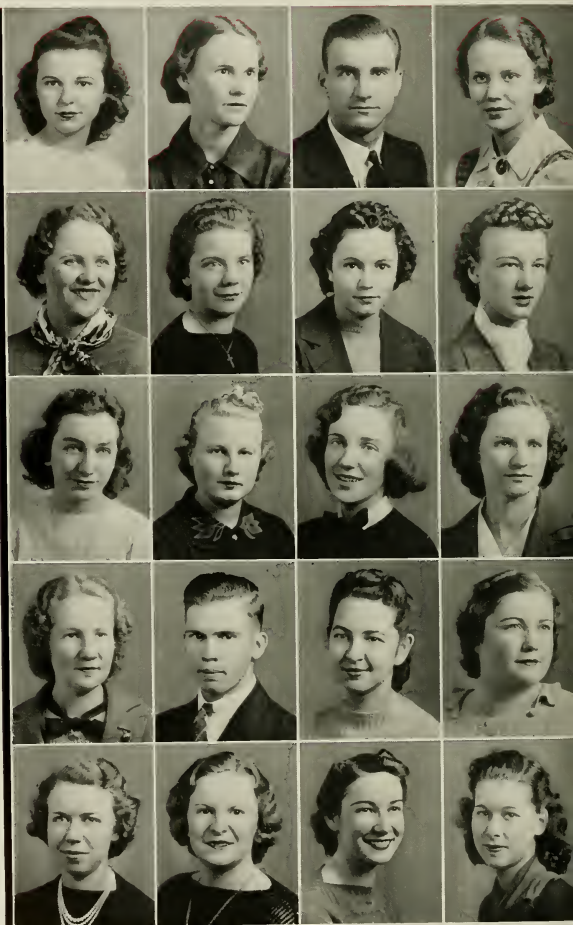
Emma Alyce Sumner  
Conway, N. C.

Rosalie Sutton  
La Grange, N. C.

Anna Louise Taylor  
Everetts, N. C.

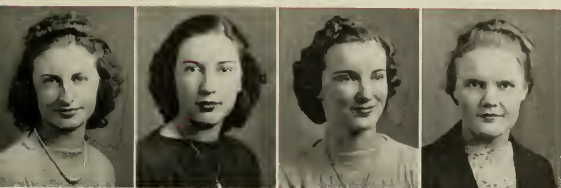
Anna M. Taylor  
Southport, N. C.

Elizabeth Taylor  
Lillington, N. C.





# 1939 *Tecoan*



Frances Taylor  
Hookerton, N. C.

Mildred Taylor  
South Mills, N. C.

Mildred J. Taylor  
Sea Level, N. C.

Sallie Taylor  
Greenville, N. C.

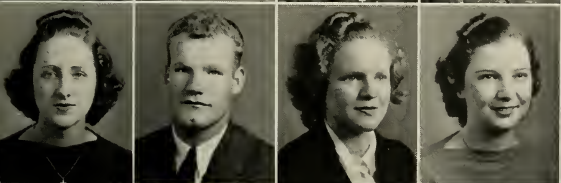


Elizabeth Thomas  
Cameron, N. C.

Lois Thompson  
Leasburg, N. C.

Marie Tripp  
Blount's Creek, N. C.

Rosa Lee Trip  
Bethel, N. C.



Doris Vaughan  
Ahoskie, N. C.

Melvin Wogner  
Derby Line, Vt.

Eleanor Warren  
Guilford College, N. C.

Mae Ellen Warren  
Newton Grove, N. C.

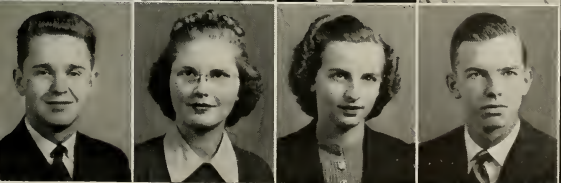


Margaret Watson  
Severn, N. C.

Marjorie Weathers  
Wendell, N. C.

Marie Wells  
Cedar Grove, N. C.

Barbara Ann West  
Moyock, N. C.



Lindsay Whichard  
Stokes, N. C.

Marjorie Whitehurst  
Bethel, N. C.

Mary Frances Whitehurst  
Pomele, N. C.

Louis Wilkerson  
Greenville, N. C.

# Junior Class



Mary Lou Willets  
Whiteville, N. C.

Doris Willey  
Weldon, N. C.

Hazel Williamson  
Kenansville, N. C.

Cecil Willis  
Hickory, N. C.

Frances Wilson  
Greenville, N. C.

Elizabeth Wilson  
Greenville, N. C.

Agnes Wood  
Essex, N. C.

Anna Lee Wood  
Newton Grove, N. C.

Virginia Woods  
Hurdle Mills, N. C.



# Sophomores

We have come only half way but we have experienced some of the difficulties which every class meets. The valuable assistance of our faculty advisers and the cooperation of the members of the class have reduced these trials to a minimum. The success of the social functions which we have sponsored has been sufficient reward for our efforts.

## OFFICERS

JIMMY WARD .....President

WILLIAM MERNER .....Vice-President

ALICE RICH .....Secretary

MILDRED BRILEY .....Treasurer



JIMMIE WARD



WILL. MERNER



ALICE RICH



MILDRED BRILEY

# Sophomore Class

Lillian Abee  
 Madeline Adams  
 Yvonne Alderman  
 Eugenia B. Allen  
 Gladys Allen



Mary Agnes Alston  
 Ruth Askew  
 Eloise Averette  
 Pauline E. Abeyounis  
 Mary Grant Bailey



Bess Barnhardt  
 Pearlle Barnhill  
 Mary Elizabeth Beasley  
 Josephine Betts  
 Doris C. Blalock



Rachel Boyd  
 Mary Helen Boykin  
 Irma Broxton  
 Ruby Braxton  
 Ruth Bray



Mildred Briley  
 Agnes Britt  
 Patricia Brooks  
 Bertha Browne  
 Evelyn Brummit



Elizabeth Bryan  
 Geraldine Bulluck  
 Frances Bunting  
 Alice Burke  
 Robert Burton



# 1939 *Tecoma*



Lula Cameron  
Joyce Campbell  
Frances Cash  
Maisie Castlebury  
Rose Collie

Sophia Credle  
Wista Covington  
Mary Elizabeth Currin  
Mary Frances Cutts  
Jack Daniels

Helen Davenport  
Katherine Davenport  
Lela Belle Davenport  
Dorothy Louise Davis  
Evelyn Davis

Mattie Davis  
Julia Pearl Dean  
Mabel Deans  
George Djiovanidis  
Mary Kathryn Dobson

Jerome Donaldson  
Waverley D'Orsey  
W. J. Dudash  
Florence Dudley  
Nancy Dunn

Mary Elizabeth Eagles  
Jeanette Earley  
Vera Edmonson  
Estelle Edwards  
Julia Edwards

# Sophomore Class

Vivian Christine Edwards

Mary Elliott

Earline Evans

Sarah McNair Evans

Janie Everette



Berline Faircloth

Sammie Farlow

Mary Elizabeth Farrior

Christine Fentress

Sue Fay



Charley J. Frazelle

Mervin Frazelle

Florence Gaddy

Lucy Gainey

Martha Gaskins



Romana Gillam

Frances Gillikin

Myra Godfrey

Anne Seville Goolsby

Margaret Griffin



Eunice Griggs

Frances Gulledge

Clayton Guthrie

Harold Gwynn

Ernestine Hardee



Frances Hardy

Ruth Glenn Hardy

Elizabeth H. Harrell

S. Elizabeth Harrell

Belva Dare Harris



# 1939 *Tecoan*



Dorothy Harris  
Edith Harris  
Reba Harris  
Melvin Hearn  
Othelia Hearn

Floyd Hinton  
Elizabeth Holliday  
Myrtle Hopkins  
Ethel Howie  
Margaret Hudgens

Kathryn Hurst  
Louise Hunter  
Bernice Iley  
Mary Frances Irvin  
Jim H. Ipock

Margaret Jackson  
William Ward James  
Helen Brown Jefferson  
Louise James  
Annie Laurie Keene

Helen Kemp  
Eloise Kennedy  
Helen King  
Edna Kirby  
Marguerite Kornegay

Margaret Lamb  
Helen Ailene Lane  
Joanna Lane  
Mildred Langley  
Thelma Langston



# Sophomore Class

Sue H. Lawrence  
Wilma Gray Lee  
Dorothy Clark Lewis  
Effie Senora Lewis  
Albert Maness



Carrie Mae Mann  
Edna Marshburn  
Tommie Byrd Martin  
Elizabeth Mashburn  
Sally Mary Mathias



Evelyn Matthews  
Addie Lee Meadow  
Elizabeth Meiggs  
William Merner  
Elizabeth Merritt



Nell Michael  
Lucy Jane Mills  
Irene Mitcham  
Bruce Modlin  
Emily Montague



Elizabeth Moody  
Elizabeth Moore  
Geneva Moore  
Novene Moore  
Ruth Mooring



Margaret McDaniel  
Ellen McIntyre  
Elizabeth McLemore  
Rachel McPherson  
Frances Nelson



# 1939 Tecumseh



Lon Nobles  
Norwood Northcutt  
Juanita O'Brien  
Ethel Owens  
Hazel Owens

Daisy Parker  
Myrtie Parnell  
Mary Elizabeth Phillips  
Elizabeth Piland  
Alice Powell

Ruth Powell  
Laura Pridgen  
Shelton Quinn  
Thelma Rayford  
Alice Lee Rich

Madeline Riddick  
Doris Roberts  
Jeanette Robinson  
Melba Rogers  
Vincent Romano

Rebecca Ross  
Emma Russell  
Louise Saieed  
Ray Saint-Amand  
Erlene Sawyer

Lima Keyes Sermans  
Helen Settle  
Rebecca Shanks  
Ethel Smith  
Grace Smith



# Sophomore Class

Lera Smith  
Mavis Marie Smith  
Rubelle Smith  
Themise Smith  
Margie Spivey



Earnestelle Stancil  
Gracy Stephenson  
Hazel Starnes  
Betty Summersill  
Rachel Teel



Hilda Tew  
Susie Tharrington  
Mamie Thomas  
Sarah Elizabeth Lindley  
Eileen Tomlinson



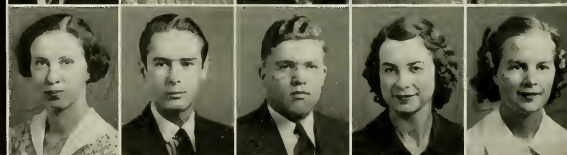
Elizabeth K. Tomlinson  
Rosalind Tucker  
Edna M. Turnage  
Dorothy Turner  
Norma Lee Tyndall



Vernon Tyson  
Zora Melba Waller  
William R. Ward  
Agnes Watson  
Larue Weathers



Virginia Weldon  
George West  
Robert West  
Mabel Wilder  
Annie Allen Wilkerson



Ellen Williams



Mary Lois Williamson



Nina Williams



Virginia Williams



Laura Mae Williamson



Helen Willoughby



Doris Woodard



Louise Woodard



Mary Woolard



Helen Yelverton



Mary Frances Young



Ada Rose Yow





# Freshmen

After one year ofl feel that we really know what college life is.

We have enjoyed the efforts of our sister class. In turn we have known the responsibility of giving social functions.

Individual members of our class have done their bit when called on to take part in programs of any kind.

With one year of success behind us we still have hope.

## OFFICERS

VERNON KEUTEMEYER .....	President
FERDINAND BADGER KERR .....	Vice-President
HARRIET MARSHBURN .....	Secretary
WILDA ROYAL .....	Treasurer



VERNON KEUTEMEYER



"BO" KERR



HARRIET MARSHBURN



WILDA ROYAL

# Freshman Class

Jean Abeyounis  
Howard Adams  
Thelma Adams  
Frances Allen  
Virginia Lee Allen  
Dorothy Alligood

Bessie Anderson  
Mary Louise Arnold  
Mary Ramsey Arrington  
Kathleen Asbell  
Margenette Asbell  
Alice Virginia Atkinson

Holton Avery  
Mildred Aycock  
Estelle Baker  
Jeanette Baker  
Margie Baker  
Martha Reed Baker

Bernice Ballance  
Kathleen Barker  
Estelle Barefoot  
Elsie Barker  
Marjorie Barnes  
Aldine Barnhill

Larry Barnhill  
Juanita Bass  
Valena Bass  
Katrina Baum  
Eugena Becton  
Nell Beddard

Russell Beddard  
Lucille Bedford  
Myrtle L. Belche  
Leola Bell  
Marjorie Bell  
Velma Bland

Alice Leigh Blaw  
Sarah Boone  
Vivian Marie Boone  
Melza Bostic  
Hazel Bowen  
Sarah Elizabeth Boyce



# 1939

# Tecoma



Frances M. Boyd  
Hazel Boykin  
Harvey Braddy  
Verna Bradley  
Honnah Brewer  
Dorothy Brinkley

Ruth Britt  
Mary Elizabeth Brown  
Mary Quinn Brown  
Eleanor Browning  
Marguerite Browning  
Catherine Bryant

Helen Leigh Bunch  
Margaret Burnette  
Cleo Burney  
Elizabeth Burns  
Eunice Butler  
Helen Butner

Tessie Campbell  
Norman Carson  
McCree Carter  
Blanche Chappell  
Mary Thad Chappel!  
Mildred Chappell

Vernon Chason  
Frances Clark  
Dorothy Clement  
Charlotte Collins  
Elmer Cox  
Milton Cox

Sarah Elizabeth Cox  
Thomas E. Cox  
Virginia Cox  
Celia Blanche Dail  
Dorothy Dalrymple  
Mary Elizabeth Darden

Mary Davenport  
Doris Dawson  
Mary Agnes Deal  
Brantley DeLoatche  
Marie Dickens  
Virginia O. Dixon



# Freshman Class

Yvonne Downing  
Doris Duval  
Kate Eaker  
Janice Eason  
Lillie Owens Eason  
Mabel Jackson Edwards

Mildred Belle Edwards  
William Chester Elks  
Irene Ellington  
Willie Evans  
Mary Virginia Farrior  
Pecolia Fisher

Helen Flowers  
Lillian Forbes  
Elizabeth Forrest  
Mary Elizabeth Foutz  
Astor Fowler  
Ruth M. Fussell

Lillian White Gardner  
Marjorie Gardner  
Lucy B. Garris  
Camille Gaskins  
Lee Edward Gaskins  
Jean Gaston

Elizabeth Gates  
Margaret Gatling  
Hilda Gillikin  
Milton Glass  
Sara Meadows Gorham  
Jesse Gray

Myrtie Gresham  
Carlotta Grussner  
Elsie Gup-ton  
Margaret Gurganus  
Edith Guthrie  
Reta Guy

Robert A. Haislip  
Nathan Hall  
Mary Frances Hansley  
Artis Hardee  
Stella Gray Harden  
Bruce Hardy





# 1939 *Tecoma*



Edith V. Harris  
Lilian Harris  
Mary Louise Harris  
William Harris  
Lill Hart  
Spencer Hatley

Hicks Henderson  
Doris Herring  
Marcelia Hess  
Edna Higgins  
Martha Hoell  
Robert Hollar

Mattie Lawrence Holliday  
Dorothy Louise Holt  
Katie Bell Honeycutt  
Mary D. Horne  
Marie Howard  
Emma Hughes

Lois Hughes  
Robert Hutsell  
Richard B. Jackson  
Marguerite Jamerson  
Robert James  
Bernard Jenkins

Helen Margaret Jenkins  
Lula Mae Jenkins  
Ann Elizabeth Jennette  
Alice Johnson  
Elsie Johnson  
Emily Johnson

Narene Johnson  
Shirley Johnson  
Daisy Raye Jones  
Carana Jordan  
Jessie Keith  
Mabel Kennedy

Ferdinand Badger Kerr  
Barbara Keuzenkamp  
Betty Keuzenkamp  
Evelyn Kilpatrick  
Ruth Kimrey  
Sybil King

# Freshman Class

Ida Ruth Knowles  
Dewitt Kornegay  
Vernon Kuetemeyer  
Ophelia Lancaster  
Clara E. Laughinghouse  
Harriete Lawrence

Theresa Lawrence  
Sarah Leary  
Julia Fuller Lee  
Betty F. Leeper  
Kathleen K. Lewis  
Pauline Litchfield

Charlie H. Little  
Mary Little  
Susan Lunceford  
Harriet Marshburn  
B. F. Martin  
Eleanor Martin

Lura Alice Mason  
Yates Mason  
Beth Matthews  
Edith Elaine Matthews  
Mary Frances Matthis  
Loreen Mayo

Wiley Mayo  
Elizabeth Meadows  
Alice Marie Meares  
Robena Midgett  
Elva Mae Mishoe  
Edna Mitchell

Erlene Mitchell  
Mildred Mitchell  
Pauline Mitchell  
S. Ann Mitchell  
Mary Elizabeth Modlin  
Evelyn Moore

Margaret Moore  
Walter Moritz  
Frank E. Morris  
Henry Morris  
Lillian Morton  
Orval Morton



# 1939 *Tecoma*



Royle Mozingo  
Mary Mullen  
Emily Murphy  
Bernice Murray  
Robert Musselwhite  
Lorraine Myers



Grace McClees  
Lois McCormick  
Dorothy McDaniel  
Geneva McDaniel  
Marie McDaniel  
Bettie McGlohan



Loonis McGlohan  
Lola McKinney  
Malisha McLamb  
Joyce McQuague  
Sarah Elizabeth Noe  
Ruth Nowaroh



Myrtle Olive  
Zelda O'Neal  
Ozalea O'Quinn  
Catherine Parker  
Gertrude Parker  
Kate Bryan Parker



Elizabeth S. Partin  
Miriam Patrick  
Charlotte Perkins  
Edna M. Pierce  
Dorothy Poteat  
Adna Lee Pridden



Frances Privott  
Mary Privott  
Lucille Privette  
Dorothy Riddick  
Harry Riddick  
Mabel Riggs



Evelyn Roberson  
Hubert Roberts  
Nancy Lois Roberts  
Virginia Roberts  
Laura Anne Robinson  
Jane Rowlett

# Freshman Class

Wilda Royall  
Thornton Ryan  
Geraldine Sanders  
Doris Satterwhite  
Helen K. Scarborough

Gladys Scull  
Virginia Dare Seegars  
Annie D. Shotwell  
Juanita Simpson  
Mary Gracie Sivertsen

Lena Mae Smith  
Marion Smith  
Maude Smith  
Morrison Smith  
Nancy Alberta Smith

Nina Smith  
Mildred Spangler  
Ray Sparrow  
Roxie Spear  
Dorothy Spence

Virginia Spencer  
Audrey Stanley  
Mary Lois Stephenson  
Dorothy Stokes  
Hulda Strickland

Laura Strickland  
Margaret Tart  
Dorothy Louise Taylor  
Harold K. Taylor  
Helen Taylor

Helen Louise Taylor  
Elizabeth Thomasson  
Jessie Thompson  
Christine Trippe





# 1939 *Tecoma*



Annie Ruth Tucker  
Walter Tucker  
R. Elizabeth Wade  
Doris Wallace  
Ingram P. Walters



Helen Christine Ward  
Martha M. Warren  
Hazel Waters  
Lallah Watts  
Norma Wellons



Jean Wendt  
Martha Eleanor Wheless  
Amy Charlotte White  
Camilla White  
Elva White



Margaret White  
Mary White  
Lula Mae Whitehurst  
James Whitfield  
Frances Whitley



Virginia Whitley  
Dorothy Wiggins  
Annie Laura Wilkerson  
Jane Williams  
Margaret Wise



Helen Wolfe  
Margaret Wood  
Florence Woodbury  
Mary Frances Worley  
Thelma Worrick



Luna Worthington  
Ruth Wright  
Dorothy Wyckoff  
Milton Zellen

# Campus

JUST A PAIR OF OLD COUGERS

DARWIN WAS RIGHT

REGISTRATION

POLLY

AH—ROMEO

HOLD TIGHT

HAD YOU HEARD?

10 MEN AND A GIRL

LAUNDRY, CHILLUNS



# Life at E.C.T.C.

LOOK OUT FOR SPLINTERS  
RIDE 'EM COWBOY  
ESSIE TESSIE WARBLER  
THE MAIL MUST GO THROUGH  
SOME PINS!  
THAT ONE MUST HAVE BEEN GOOD  
COME UP AND SEE ME  
LADIES FIRST





# Campus

AIN'T WE GOT THE BIZ  
JUST HANGING AROUND  
RIGHT THIS WAY FOLKS!  
THREE SMART GIRLS  
STRUTTIN' FLOSSIE  
CAMPUS SCENERY  
THAT AIN'T THE WAY I HEARD IT  
CAREFUL NOW  
WHAT'S THE LATEST



# Life at E.C.T.C.

LOAFING

HANDLE WITH CARE—PRECIOUS PROPERTY

DEAR TEACHER

WELL?

READY, AIM—

STEP LIVELY

BREAD LINE

LEFT AT THE POST



# Campus



HUDDLE  
 LOOK OUT BELOW  
 LEGGIN'S  
 DO YOU MIND?  
 CANDID CAMPUS SNAPPER  
 HOW TO GET A ONE IN ONE EASY LESSON  
 JOE D. TWO PHYS-ED GALS  
 HAVE A BITE  
 POSIN'!



# Life at E.C.T.C.

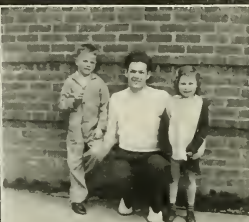
PICK 'EM UP  
GO AWAY, PLEASE  
IN THE SPRING  
HEADLINESMAN=NEWSPAPERMAN  
SKIRTS  
ANY BOYCE AROUND?  
AIN'T I CUTE?  
WELL, OF ALL THINGS!





# Campus

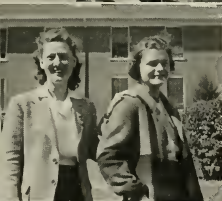
READY, CHEER LEADERS!  
EASY NOW!!  
LOOK AT FATHER  
"OVER SOMEONE ELSE'S SHOULDER"  
JUST A MINUTE, MISS WHITE  
LOOKS LIKE INITIATION  
LET US IN ON IT, TOO!  
IS THE SNOW THAT DEEP?  
PEEK-A-BOO!  
HARRY—WHERE ARE TOM AND DICK?



# Life at E.C.T.C.



RAH! RAH! RAH!  
THE PAUSE THAT REFRESHES  
DON'T LET IT GET YOU DOWN  
STANLEY AND ADRIAN  
WHAT'CHA TROUBLE, RED?  
TWO GIRLS FROM COTTEN  
TIME TO GO TO SLEEP  
THE UMBRELLA MAN  
MUSICAL TRIO



book three





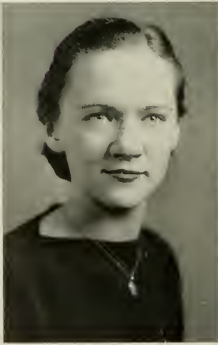
activities

# WOMEN'S STUDENT

The Women's Student Government Association is an organization to which all women students of the college automatically belong. The purpose of this organization is to encourage right conduct and to promote high ideals and a sense of responsibility among the students of the college.

## OFFICERS

LILLIAN PARRISH .....	President
NELL BREEDLOVE .....	Vice-President
GLADYS IPOCK .....	Secretary
WISTA COVINGTON .....	Treasurer



# GOVERNMENT ASSOCIATION



First Row. JUANITA ETHERIDGE, ANNIE ALLEN WILKERSON, MARION REED,  
NELL PERRY, MARGUERITTE HUTCHINSON

Second Row: DORIS BLALOCK, JOYCE CAMPBELL, LENA MAE ETHERIDGE,  
MARY PARKER JOHNSON, ERNESTINE CREECH

Third Row: EFFIE LESIE, BETTIE BLANCHARD, FRANCES HARDY

Contacts with other campuses have been made through delegates who went to the National Student Federation Congress at Purdue University, Lafayette, Indiana; to the Southern Intercollegiate Association in Winston-Salem, North Carolina; and to the meeting of the North Carolina Federation of Students at Chapel Hill.

# THE MEN'S STUDENT

With the largest enrollment of male students in the history of the school, the Men's Student Government Association of East Carolina Teachers College of 1938-1939 has, besides upholding the highest and finest ideals of manhood, formulated plans for the betterment of student activities and spirit.

Under the able leadership of Lester Ridenhour, its president, the council, with its advisers, has succeeded in the following: acquainted the Freshmen with the rules and regulations that prevail on the campus, presented a bill for the increase of the student fee which has made possible many improvements within the school, passed various laws for the amendment of the Constitution, created the first Y. M. C. A. which has made very much progress here, and sent a representative to National Student Federation of America held at Purdue University, Lafayette, Indiana.



# GOVERNMENT ASSOCIATION



C. RAY PRUETTE



ALTON PAYNE



VERNON TYSON



JACK DANIELS

## OFFICERS

LESTER RAY RIDENHOUR .....President

FODIE HODGES .....Vice-President

WILLIAM SHELTON .....Secretary and Treasurer

The Men's Student Body of East Carolina Teachers College has cooperated to the fullest extent with the association and its president. This cooperation was due much to the success of the organization.

## YOUNG WOMEN'S

The Y. W. C. A. has for its purpose the realization of a full and creative life through a growing knowledge of God. We have tried to carry out this purpose through our vesper services given on Friday and Sunday evenings. Among the outstanding speakers at these services was Sherwood Eddy, a well-known author and lecturer.

Deputation teams from State College and Wake Forest College have made contributions to our programs. We in turn have sent representatives to take part in their activities. Candlelighting services have also helped to make this organization more beautiful and more helpful to the student body as a whole. We have recently become a member of the Interracial Group of Y. W. and Y. M. C. A.'s of the state.





# CHRISTIAN ASSOCIATION



First Row: IRENE MITCHAM, SUSAN EVANS, BETTY McARTHUR, MARJORIE HEATH

Second Row: ANNIE ALLEN WILKERSON, ALICE HARRISON, SARAH ANN MAXWELL, LILLIAN PARRISH, GENEVIEVE EAKES

## OFFICERS

MARIE DAWSON .....	President
PRUE NEWBY .....	Vice-President
DORIS BLALOCK .....	Secretary
LUCY ANN BARROW .....	Treasurer

We sincerely hope that our Cabinet has left a permanent contribution to the campus in the form of a "Y" Reading Room recently opened in the Y. W. C. A. Cabinet Room.

## JUNIOR "Y" CABINET



VIRGINIA WHITLEY  
President

From observation one can quickly see that the Junior "Y" Cabinet under the leadership of the cabinet president, Virginia Whitley, and the cabinet adviser, Marjorie Heath, has played an important part in the Young Women's Christian Association on our campus. As a co-worker with the Senior "Y" Cabinet it has participated in the vesper services which are held each Friday and Sunday evenings. Also, the Junior "Y" Cabinet has been very active in increasing the attendance and promoting the work of our Morning Watch.



## SCIENCE CLUB

The Science Club, under the leadership of Hilda Gray Batten for the year 1938-1939, has been quite a success. During the year the club has presented interesting and valuable programs by outside speakers and by students. One of the highlights of the year was an illustrated lecture on neon conducted by Mr. Littlejohn Faulkner of Wilson, North Carolina. Other highlights were the annual club trip and three socials, which not only enabled the students to share their appreciation of the wonders of science, but also to know each other better and to enjoy the recreational side of the subject.

The aim and purpose of the Science Club is to inspire science students and to stimulate in them a desire for a deeper, more meaningful study and to challenge them to become more conscious of a scientific world.



HILDA GRAY BATTEN  
President



## VERSE SPEAKING CHOIR



MISS MARY GREENE  
Director

Under the direction of Miss Mary H. Greene, the Verse-Speaking Choir has this year increased its membership to a number approximately twice that at the time of its organization in 1938.

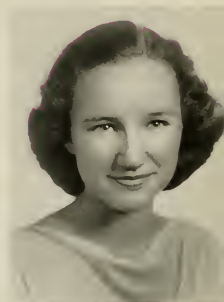
Already the members have presented several creditable performances. The selections studied have been chosen from both older and contemporary writings. The choir has as its purpose to learn more about diction and fine literature.



## ALUMNI DAUGHTERS AND SONS OF E. C. T. C.

In the fall of 1939 the Alumni Daughters and Sons of East Carolina Teachers College was organized through the guidance of Miss Mamie Jenkins, who is now its adviser. Its purpose is to develop loyalty, to promote a closer feeling of friendship among the sons and daughters of the alumni, and to preserve the memory of the students of the past

The main event on the club calendar was the tea given in Fleming Hall Parlor for the alumni of Greenville.



MARGUERITE AVERETT  
President



## ENGLISH CLUB

The English Club has had many stimulating programs this year. It has brought two outstanding speakers to the College—Mrs. Ruth Vick Everett, Secretary of the North Carolina Education Association; and Miss Mildred English, Field Secretary of the Southern Association of Secondary Schools and Colleges. It organized and sponsors the Verse-Speaking Choir under the leadership of Miss Mary Greene.

The club has a well-equipped laboratory which is a constant help to the English majors. Among the most important parts of the equipment, other than books, are a recording machine, a projector, a phonograph, a mimeographing machine, and three large filing cabinets of clippings and pictures

## MATHEMATICS CLUB

The Mathematics Club has aimed to make it possible for all majors and teachers in that department to know each other socially and to share their appreciation of mathematics. This purpose has been furthered by a dramatic production in which the members of the club participated, addresses given by the professors of the mathematics department, and social entertainments at each monthly meeting.

MADELINE BYRUM  
President of the English Club

MARGUERITTE HUTCHINSON  
President of the Mathematics Club





ENGLISH CLUB



MATHEMATICS CLUB



## HOME ECONOMICS CLUB

The Home Economics Club is affiliated with the State and National Home Economics Association. Our Club motto is "Serving our community, our school, and our families." The purpose of the club is to develop personality, leadership, initiative, and poise.

The members have participated in many activities during the year. They gave a program at the North Carolina Home Economics Student Club Association which met at the Woman's College of the University of North Carolina, Greensboro, North Carolina; they kept open house at Christmas, displaying attractive Christmas decorations, packages, and exhibits showing Christmas in other lands. The Club made contributions of toys, clothing, and food for some unfortunate families at Christmas, gave the nursery school some playground equipment, took a trip to New Bern, and arranged several social events.

Interesting and helpful programs have been given at the monthly meetings. The Club has had a number of outstanding speakers including Miss Catherine Dennis, State Supervisor of Home Economics; Mrs. Estelle T. Smith, Southeastern District Home Demonstration Agent; and Mrs. A. E. Blaxton, member of the Home Economics Faculty of this college.

Since the theme for the year was "Riding Your Hobby through Home Economics," the Club was divided into groups according to hobbies with demonstrations and exhibits given at the end of the year.

The Club, under the presidency of Iberia Roach and the sponsorship of Miss Holtzclaw, increased its membership from fifty to one hundred and ten members and has maintained a high place among the active and outstanding organizations on the campus.

## ASSOCIATION FOR CHILDHOOD EDUCATION

The Student Branch of the Association for Childhood Education, subdivided into groups interested in music, child care, reading, sewing, and art, has had a most successful year.

With cultural and valuable programs—through presenting Miss Rainwater, Mr. Tabor, Mr. Dittmer, and Dr. Harr as speakers—the Association has met regularly.

The Association realized its efforts of the year by sending several delegates to the National A. C. E. Convention in Atlanta, Georgia, during the week of April 10-14.

IBERIA ROACH  
President of the Home Economics Club

REBECCA NICHOLSON  
President of the Association for  
Childhood Education



HOME ECONOMICS CLUB



CHILDHOOD EDUCATION



## THE COMMERCE CLUB

This year the Commerce Club has made its aim the increasing of interest in professional work and teaching.

At the regular monthly meetings, programs which will give some insight into business conditions, explain what the business world expects of those who enter this field, and how the commercial teacher can prepare others to meet these needs are presented.

The seventy-five members of the club with the aid of the club advisers, Mr. E. R. Browning, Miss Lena C. Ellis, and Miss Velma Lowe, are making much progress and showing a great enthusiasm in their club, which is fast becoming one of the larger ones on the campus.

## PHI SIGMA

Organized in 1925 under the name "Le Cercle Francais," the French Club of East Carolina Teachers College began its work with the purpose of encouraging the study of French and fostering and developing a spirit of friendship among its members. Later the club adopted as its name the Greek letters "Phi Sigma."

This year the club became a chapter of Sigma Pi Alpha, national honor fraternity for students of foreign languages; and henceforth, is known as the Phi Sigma chapter of Sigma Pi Alpha. Programs in the club this year have included educational as well as social entertainment.

ANNIE LAURIE BEALE  
President of the Commerce Club

MARGARET GUY OVERMAN  
President of the Phi Sigma



COMMERCE CLUB



PHI SIGMA





# PHI SIGMA PI

This Chapter is made up of a group of men who are seriously planning teaching careers. It is yet young in years but is rapidly becoming a very active body. Already much has been done to develop a finer spirit of co-operation among the students and to contribute to our ever-increasing professional knowledge.

Outstanding activities of the year have included a womanless wedding and a carnival. We also sent delegates to a National Convention of our Fraternity in Cleveland, Ohio.

The annual Founder's Day Banquet will complete the activities of another successful year.

A fact which should be mentioned and of which we are very proud is that our sponsor, Dr. J. B. Flanigan, was elected National Historian for the years 1939-1941.

FODIE HODGES.....	President
HARVEY DEAL .....	Vice-President
LEO BURKS.....	Secretary
EMMETT SAWYER.....	Assistant Secretary
C. RAY PRUETTE.....	Treasurer



FIRST ROW—Honorary Member, Dr. Herbert Rebarker, Dr. A. D. Frank, Mr. E. C. Haller, Dr. H. C. Haynes, Superintendent Clyde R. Erwin, Dr. Leon R. Meadows not photographed, Dr. Beecher Flanigan, sponsor, Boley Farley, Billy Daniels.

SECOND ROW—John David Bridgers, Harvey Deal, Robert Burton, Vance Chadwick, Charles Green, Charles Harris, Emmett Sawyer, Lester Richmond.

THIRD ROW—Leo Burks, Jr., Lewis Rebarker, C. Ray Pruette, Earl Smith, Charles Wooten, Alton Payne, Adrian Ayers, William Shelton.



## THE PUBLICATIONS BOARD

To fill the need of an advisory committee to determine the policies of the two campus publications, this board has been organized. Its function is that of certifying eligibles for student elections of officers and of governing the actions of these two bodies—THE TECO ECHO and THE TECOAN.



LILLIAN PARRISH  
Chairman



FIRST ROW—Pete Hill, Mildred Boyce, Hattie Laura Britt, Billie Daniels, Lucille Johnson.

SECOND ROW—C. Ray Pruette, Dr. Howard J. McGinnis, Mr. J. B. Cummings, Miss Mome Jenkins, Beecher Flanagan.

## COLLEGE BAND

The East Carolina Teachers College Band is celebrating its first birthday, for the Band was organized by Mr. Dean Tabor during the winter quarter of 1938. Starting with twenty members trained in the fall quarter, the Band has grown to its present membership of sixty, with a long waiting list. Only six members will be lost by graduation. The Band is sincerely proud of its birthday present—Purple and Gold Uniforms. They aspire to a membership of one hundred within the next two years. We can well be proud of the fine development of this organization in such a short period of time.

## ORCHESTRA

With the growing importance of an instrumental music program in the public school curriculum, comes also the need of training teachers for this program. The East Carolina Teachers College Orchestra has been organized to provide for this need. In addition, it proposes to offer enjoyable recreation for all students and teachers who can play orchestral instruments, and to lay a foundation for the organization of a symphony which may serve both the needs of the school and of the community.

## HISTORY CLUB

The History Club, organized in the winter of 1938, brings together those history majors who have had nine quarter hours in that field.

Through the programs in which students and guest speakers participate the club shares in the wealth gained by the thorough studies of historical nature made by others.

The club visited historical New Bern last spring where they viewed some of the remnants of colonial North Carolina. The club hopes to make a trip of this nature an annual event on their calendar.



DEAN TABOR  
Director of the Band



DITTMER  
Leader of the Orchestra



LOUISE ELAM  
President History Club

CONCERT BAND



ORCHESTRA



HISTORY CLUB



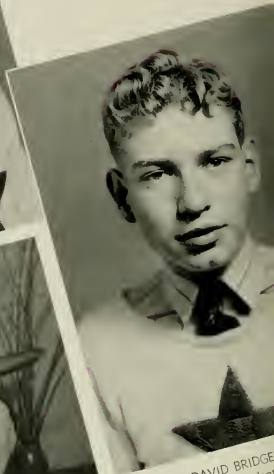
# KI PI PLAYERS



CLIFTON BRITTON  
Student Director



HELEN MCGINNIS  
President



JOHN DAVID BRIDGE  
First Vice-President



GERALDINE HARRIS  
Second Vice-President





HATTIE LAURA BRITT  
Secretary



EMILY BRENDLE  
Treasurer



DOROTHY HOLLAR  
Historian

The Ki Pi Players was organized during the spring quarter of 1938, with about fifty charter members. The purpose of this club is to give its members practical experience in the interpreting and producing of outstanding plays, to promote interest in the dramatic activities of the school, to develop the creative talent of the students of the school, to encourage the reading and witnessing of better plays, and to promote an enthusiasm for the drama in all its phases.

During the 1939 program, the Club studied such phases of dramatic art as make-up, stage settings, lighting, color, speech and diction, the history of the drama, and current New York plays. The Ki Pi Players is a member of the Carolina Dramatic Association.





# ANNUAL PUBLICATION OF EAST



PETE HILL

Editor

THE 1939

Associate Editors:

MARGUERITE AVERITT, WILLIAM SHELTON, DOROTHY DAVIS, PETE HILL, HATTIE LAURA BRITT, HARVEY DEAL, NELL PERRY.



# CAROLINA TEACHERS COLLEGE



TECOAN

MILDRED BOYCE

Business Manager

Assistant Business Managers:

EVA CARTER, META VIRGINIA HAMMOND, PRUE NEWBY,  
MILDRED BOYCE, KATHLEEN STRICKLAND, ERLENE SAWYER.



MRS. J. DAVID HILL



MRS. J. E. BOYCE

# BI-WEEKLY PUBLICATION OF EAST



BILLY DANIELS

Editor

THE TECO

Associate Editors:

LINDSAY WHICHARD, DOROTHY HOLLAR, MARY CLYDE  
COPPEDGE, MARGARET GUY OVERMAN, JOHN DAVID BRIDG-  
ERS, and INA MAE PIERCE.

Sports Editor

JACK DANIELS

Exchange Editor

C. RAY PRUETTE

Alumnae Editor

ELIZABETH COPELAND

# CAROLINA TEACHERS COLLEGE



## ECHO

LUCILLE H. JOHNSON

Business Manager

Business Staff:

ETHEL PADGETTE, HELEN FLANAGAN, EVA CARTER, SARAH  
EVANS, HELEN McCAIN, ERLENE SAWYER.

*Presenting*

MISS IRENE UZZELL

*and Society Officers*







HATTIE LAURA BRITT

The Emerson Society is composed of a small but elite group of students.

This year, under the presidency of Hattie Laura Britt, and the friendly advice of its sponsor, it has maintained the high standards set during preceding years.

Outstanding activities of the society have included a buffet supper and the sponsorship of the Fall Dance.

A plan which included one social, one student program, and one guest speaker during each quarter has been followed, thus providing variety for its members.

On the whole, the work this year has been tremendously successful—a year every Emerson may well be proud of.



META VIRGINIA HAMMOND



PETE HILL



EUNICE GRIGGS

*Emerson*

NELLIE WEBB



ALICE BRAGG



# *Society*



ANNIE LAURIE BEALE



MELBA GRACE ROGERS

HATTIE LAURA BRITT



JUANITA ETHERIDGE



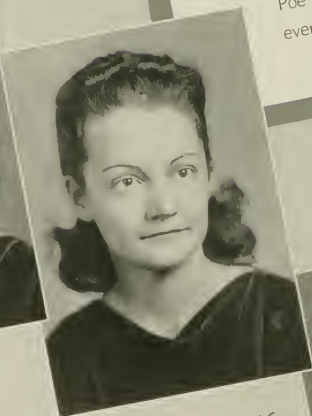
With "Eldorado" as its motto, the Poe Society has done much during the year 1938-1939 to revive the old Poe spirit. As a result of freshman registration in the fall, 103 became loyal Poes.

The programs have been planned so as to create a greater love for the best in literature, music, and art.

The spring dance, sponsored by the Poe Society, was one of the greatest events of the year.



REBECCA GRANT



REBECCA SHANKS

BECK ROSS



Poe S

MARY ELIZABETH BEASLEY



VIRGINIA WOODS



*ciety*



MADLINE BYRUM



DOROTHY HOLLAR

CHRISTINE HARRIS



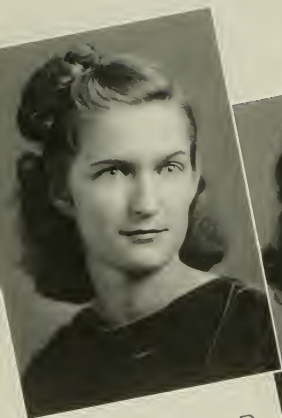
EMILY BRENDEL



The Lanier Society welcomed the freshmen of 1938-1939 by giving a weiner roast at the college loka. Those freshmen who became members were entertained at a Bingo party in the "Y" Hut

Among extra activities, the Laniers have worked on such hobbies as the making of a Sidney Lanier scrapbook and the collecting of epitaphs, college seals, and famous quotations. A program on the life and works of Pearl S. Buck was presented in chapel. The entertainment committee has catalogued a date for next year at which time the three societies will compete for a loving cup in a one-act play contest.

The mid-winter dance, sponsored by the Lanier Society, was marked by gaiety and originality.



RUTH W. PRITCHARD



ERLENE SAWYER

WISTA COVINGTON

*Lanier*





MARJORIE WATSON



FRANCES HARDY



*Society*



MILDRED J. TAYLOR



KATHLEEN STRICKLAND

EMILY BRENDE



book four



athletics





## VARSITY CLUB

The wearers of the "T", representing the four major sports: football, basketball, baseball, and boxing, have made the Varsity Club of East Carolina Teachers College, for the year 1938-1939, one of the leading organizations on the campus.

Besides promoting fellowship, the club has encouraged good sportsmanship at all intercollegiate games and welcomed visiting teams to our school.

Beginning this year under the leadership of its President, Bill Shelton, the club has as its motto "Better friendship among its members"—which is now a realization.

Through the past year the club has concerned itself chiefly in the following activities: increased membership by initiation of lettermen, amendments to the Constitution, the formation of a varsity club alumni, and the sponsoring of the second annual varsity club dance. All of these were well planned and well carried out.



# FOOTBALL

Coach Joe Alexander started the season with only nine men who had had previous experience in college football and was confronted with the stiffest schedule ever played by a Pirate team. The team made a very poor showing against Campbell and Belmont Abbey but gained momentum as the season racked on. They gained strength and made excellent showings against High Point, William and Mary (Norfolk Division), and won over the West Carolina Teachers College Catamounts in the Catamount's homecoming at Cullowhee in a game that was outstanding in thrills and spectacular play. The superb line play of Moye and Mayo together with the masterful kicking of Bill Shelton resulted in a victory for the Pirates by a narrow one point margin.



## ON THE

ALEXANDER  
Coach

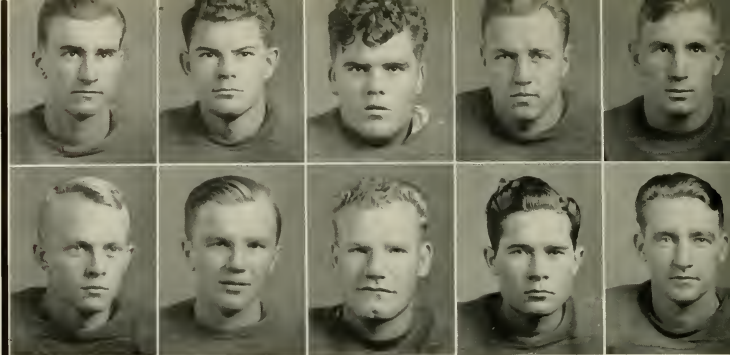




# COLLEGE GRIDIRON

## FOOTBALL SCORES

OCT. 1—BELMONT ABBEY .....	19	.....E.C.T.C.	0
OCT. 8—CAMPBELL COLLEGE .....	19	.....E.C.T.C.	0
OCT. 22—WEST CAROLINA TEACHERS ..	6	.....E.C.T.C.	7
OCT. 29—HIGH POINT COLLEGE .....	20	.....E.C.T.C.	7
NOV. 5—GUILFORD COLLEGE .....	7	.....E.C.T.C.	7
NOV. 11—WILLIAM & MARY (N. Div) ..	6	.....E.C.T.C.	0
NOV. 19—APPALACHIAN STATE TEACH	18	.....E.C.T.C.	6
NOV. 26—U. S. NAVAL BASE .....	31	.....E.C.T.C.	6



BILL SHELTON  
CHARLES FUTRELL

NORMAN MAYO  
BILL DUDASH

"FOCK" VENTERS  
MELVIN WAGNER

WALTER ROGERS  
HUBERT ROBERTS

JACK NOE  
BILL MURNER

Hubert Roberts and Floyd Hinton, ends, and Jack Moyer and Adrian Brown, guards, were outstanding linesmen during the past gridiron season, which was the first for each of these boys with the Buccaneers. Roberts and Hinton turned in stellar performances in games with Guilford College, West Carolina Teachers College, and William and Mary (Norfolk Division). The defensive work of Brown and Moyer in the High Point and Belmont Abbey games was commendable.



JIMMY WARD  
Manager



FLOYD HINTON  
LEX RIDENHOUR

KELLY MARTIN  
JOE WILLIAMS

"BUB" GLASS  
RALPH ELLIOT

"WOODIE" LONG  
JACK MOYE

ADRAIN BROWN  
GENE CARSON

Bill Shelton, Lester Ridenhour, Bill Dudash and Jack Noe, played spectacular ball throughout the season. Bill Shelton, triple-threat back, kept his opponents guessing on every play. Ridenhour, only senior on the squad, Dudash, sophomore, and Noe, a junior, were effective in blocking and in defensive play. They did much to furnish the power that carried the pigskin across the goal line for hard-earned touchdowns.



BILL SHELTON  
Given medal for being outstanding player



# BASKETBALL

Coach Gordon Gilbert's East Carolina Teachers College Pirates added many laurels to their record during the basketball season concluded here March 7 in a one-sided triumph over the Wilson Teachers College Owls of Washington, D. C.

This season's schedule was highlighted by several hard-fought games, all of which were scattered. In a game with William and Mary (Norfolk Division), the Pirates came from behind a half-time advantage held by their opponents to register a 35-33 verdict.

Aldo Cipolat, Virginia's second highest scorer in intercollegiate basketball competition, was held to only ten points when his colleagues collided with the Pirates, who garnered a 49-32 victory. This was the lowest scoring mark reached by the Virginian during the season.

One of the roughest and toughest games of the season matched the Pirates with a powerful Elon contingent, with the latter emerging in a 38-31 win. Another game that gave the Pirates stiff competition was with High Point College. The Panthers clawed the Pirates 43-37. High Point's aggregation was sparked by superb offensive and defensive play.

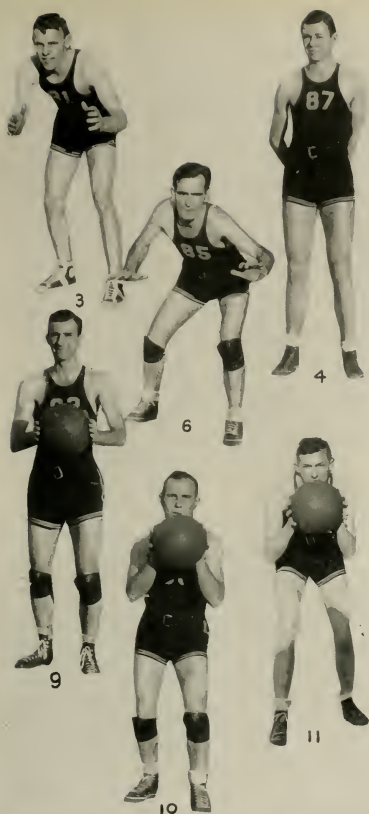
Atlantic Christian College offered a galaxy of thrills late in the season by trouncing the Pirates 43-37 in a game played on home territory. Nine minutes before the final whistle, the Pirates were out in front. However, the Bulldogs staged an unexpected comeback and cinched the win.

Coach Gilbert's Pirates also competed with outstanding independent teams during the season. Rocky Mount's Y. M. C. A. cagers suffered two defeats at the hands of the Pirates. In the first clash, the Pirates registered a 33-26 win, and in the second, a 49-39 triumph. Erwin's Red Birds trounced the Pirates 30-26 in a game at Erwin, but the Pirates gained their revenge by turning in a 35-32 verdict over the Erwin cagers in the E. C. T. C. gymnasium.



GILBERT  
COACH

- |   |                 |       |         |
|---|-----------------|-------|---------|
| 1 | KELLY MARTIN    | ..... | Center  |
| 2 | CLAYTON GUTHRIE | ..... | Guard   |
| 3 | DONALD BROCK    | ..... | Center  |
| 4 | LEX RIDENHOUR   | ..... | Forward |
| 5 | FLOYD HINTON    | ..... | Guard   |



## BASKETBALL

Dec 5—Newport News Business College.....	22	.....E.C.T.C.	31
Dec 9—Erwin Red Birds.....	30	.....E.C.T.C.	26
Dec 10—Wake Forest (Rebels).....	38	.....E.C.T.C.	44
Dec 10—Williamston Martins.....	32	.....E.C.T.C.	45
Dec 26—Kinston All-Stars.....	13	.....E.C.T.C.	45
Dec 27—Rocky Mount Y.M.C.A.....	26	.....E.C.T.C.	33
Dec 28—Kinston All-Stars.....	26	.....E.C.T.C.	67
Dec 29—Williamston Martins.....	36	.....E.C.T.C.	41
Dec 30—Rocky Mount Y.M.C.A.....	39	.....E.C.T.C.	49
Dec 31—Erwin Red Birds.....	32	.....E.C.T.C.	35
Jan 4—High Point College.....	43	.....E.C.T.C.	37
Jan. 9—A. C. C.....	32	.....E.C.T.C.	28
Jan. 13—William & Mary (Norfolk Div.).....	25	.....E.C.T.C.	34
Jan 14—Naval Base (Norfolk).....	35	.....E.C.T.C.	44
Jan 19—Wilson Teachers College.....	33	.....E.C.T.C.	41
Jan. 20—Lynchburg College.....	42	.....E.C.T.C.	40
Jan 21—Elon College.....	46	.....E.C.T.C.	20
Jan. 22—Louisburg.....	35	.....E.C.T.C.	22
Jan 27—W. C. T. C.....	30	.....E.C.T.C.	38
Jan 28—W. C. T. C.....	43	.....E.C.T.C.	38
Jan 31—High Point College.....	51	.....E.C.T.C.	45
Feb. 4—Lynchburg College.....	32	.....E.C.T.C.	49
Feb. 7—Elon College.....	38	.....E.C.T.C.	31
Feb. 13—A. C. C.....	29	.....E.C.T.C.	37
Feb 14—William & Mary (Norfolk Div.).....	33	.....E.C.T.C.	35
Feb. 20—Chowan College.....	18	.....E.C.T.C.	33
Feb. 22—Naval Base (Norfolk).....	43	.....E.C.T.C.	39
March 6—Wilson Teachers College.....	30	.....E.C.T.C.	53

3	HARRY RIDDICK.....	.....Forward
4	BUB GLASS.....	.....Forward
6	ADRIAN AYERS.....	.....Forward
9	BILL SHELTON.....	.....Forward
10	EARL SMITH.....	.....Guard
11	TOM COX.....	.....Guard



"LEX" RIDENHOUR  
CAPTAIN

# BASEBALL



"BO" FARLEY  
Coach



JIMMY WARD  
Manager



"LEX" RIDENHOUR  
Captain

Ending the 1948 season with seventeen victories and three defeats, Coach "Bo" Farley's nine compiled the best record of any baseball team produced at East Carolina Teachers College. It is believed that this team would rank with any baseball nine in intercollegiate circles.

Opening the season, March 28 in a two game series with the Guilford Quakers, the Pirates emerged with two victories, 5-2 and 4-2, behind the excellent pitching of Holland and Martin.

The next victims of the Pirates were the Panthers of High Point, who were left on the short end of an 8-3 and 6-0 scores with Phillips and Wells doing masterful work on the mound.

April 9 the Bulldogs of Atlantic Christian College were trounced to the tune of a 19-6 score; a total of 21 hits were gathered by the hard-hitting Pirates.

April 12, before a High School Day crowd of 2,000, Holland bested Jordan of the New Bern Bears, Coastal Plain League entry, 3-1, in a pitcher's duel, this being, by far, one of the best and fastest games ever witnessed on the local diamond.

April 13, in a return game with the New Bern Bears, the Pirate's six game winning streak was snapped by the effective pitching of Berry, the Bears' ace, by the close margin of 7-4.

On April 14 the Pirates again regained their winning ways by soundly beating Lausburg 19-2 and on April 15 and 19 by winning over William & Mary (Norfolk Division) 8-0 and 9-1.

Journeyming to Lausburg April 25 the Pirates turned back the Trojans 6-3, and on the following day nosed out A. C. C. Bulldogs 7-6, in their own backyard.

With a four-day invasion of Norfolk beginning April 30, the Pirates were victorious over William & Mary by the score of 7-2 May 2 and 3 found E. C. T. C. at the Naval Base chalking up two victories over Uncle Sam's proteges by the scores of 8-2 and 15-1. May 4, the Pirates suffered their first defeat by a college team. It was the second defeat of the season, since William & Mary turned back the E. C. T. C. nine 6-5 in a ten-inning affair.

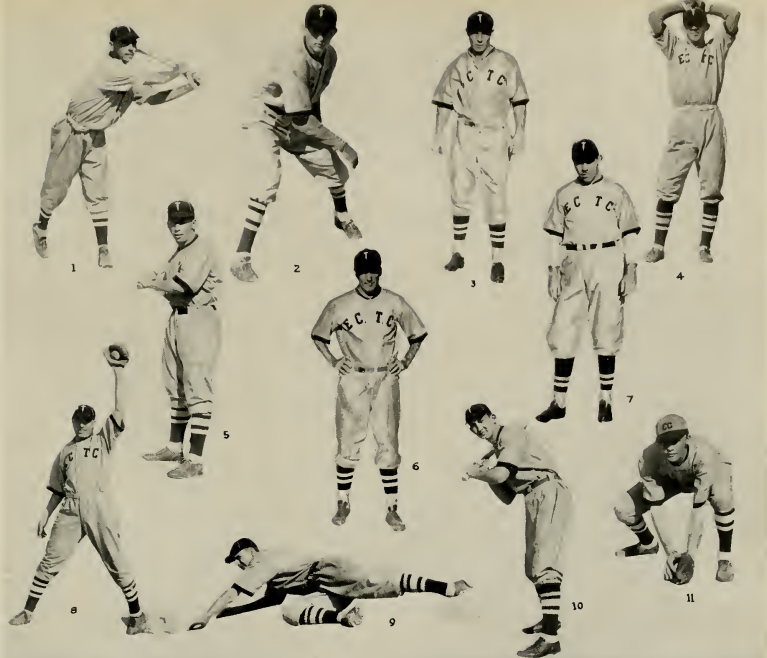
Playing Campbell College at Buies Creek May 7, the Pirates rode the Camels to a 6-1 victory with Bill Holland, Pirate ace, whiffing 21 batsmen.

Now invading the den of the Panthers of High Point, the E. C. T. C. nine broke even in a two-game series, being soundly beaten 14-4 in the first game, and gaining revenge in the second with a 7-3 victory.

May 18 found the Pirates in their last home stand belting the Campbell College Camels to a 8-1 victory. The feature of this game being the one-hit pitching of Bill Holland in his last collegiate game for East Carolina Teachers College.

Ridenhour and Smith topped the Pirates batsmen with averages of .411 and .403 respectively. The pitching staff was led by Bill Holland with 10 victories and no defeats. Wells followed next with 3 wins and no losses. Martin, with two wins and one loss, and Phillips, with two victories and two defeats, rounded out the pitching staff. Coach Farley, by his superb coaching ability, molded a team which will be long remembered at this College.





1 "CHICKEN" HATEM  
Left Field  
2 FRAN FEREBEE  
Center Field

2 WILLIE PHEL  
Pitcher  
6 ADRIAN AYERS  
Catcher

3 EARL SMITH  
Third Baseman  
7 BILL HOLLAND  
Pitcher

4 KELLY MARTIN  
Pitcher  
8 LEX RIDENHOUR  
First Baseman

9 BILL SHELTON  
Shortstop

10 JIMMY JOHNSON  
Right Field

11 CLAYTON GUTHRIE  
Second Baseman

March 28—Guilford College 2	.....E.C.T.C.	3	Here
March 29—Guilford College 2	.....E.C.T.C.	4	Here
March 30—High Point College 3	.....E.C.T.C.	8	Here
March 31—High Point College 0	.....E.C.T.C.	6	Here
April 9—A. C. C. 6	.....E.C.T.C.	9	Here
April 12—New Bern 1	.....E.C.T.C.	3	Here
April 13—New Bern 7	.....E.C.T.C.	4	There
April 14—Louisburg College 2	.....E.C.T.C.	19	Here
April 18—Wm. & Mary (N. D.) 0	.....E.C.T.C.	8	Here
April 19—Wm. & Mary (N. D.) 1	.....E.C.T.C.	9	Here

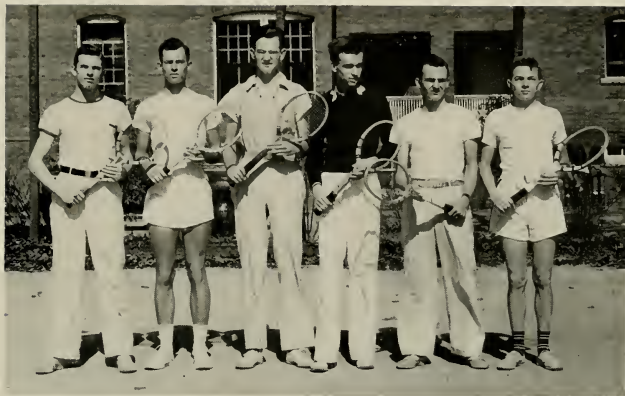
April 25—Louisburg College 3	.....E.C.T.C.	6	There
April 26—A. C. C. 6	.....E.C.T.C.	7	There
April 30—Wm. & Mary (N. D.) 5	.....E.C.T.C.	6	There
May 2—U. S. Naval Base 2	.....E.C.T.C.	8	There
May 3—U. S. Naval Base 1	.....E.C.T.C.	15	There
May 4—Wm. & Mary (N. D.) 6	.....E.C.T.C.	5	There
May 7—Campbell College 1	.....E.C.T.C.	6	There
May 9—High Point College 14	.....E.C.T.C.	6	There
May 10—High Point College 3	.....E.C.T.C.	7	There
May 18—Campbell College 1	.....E.C.T.C.	8	Here

## BOXING



With four veterans back the Pirate boxing team developed rapidly and were able to win decisively over Duke Freshmen and lost one to A. C. C. and tied with A. C. C. and Louisburg for one meet each. Wilkerson went through the season undefeated and untied. Joe Williams, Norman Fleming, and Woodrow Long made fine records for the season, and this year's team set the stage for great days in boxing at E. C. T. C.

## TENNIS



Last year, tennis, as was boxing, came into being for the first time as an intercollegiate sport. Without a coach, without money for finances, this team, supported by funds from the players themselves, won two matches, lost three, and tied two.

We opened the season with a 3-3 tie with High Point with Herbert Wilkerson furnishing the fireworks for the home team. The second match was rained out. Next came a 3-3 tie with A. C. C., called because of darkness.

Later we journeyed to State College where we met a well coached team and were white-washed, 9-0. Our Leo Burks played Jordan Dulin in a hard fought three-set match in which Dulin edged out.

In a return match with A. C. C., we were defeated 5-2 for no known reason. Burks again was the star.

In the last two matches we used some men who had not played before and beat Louisburg 6-3 here, and 5-2 in Louisburg.

## WOMEN'S ATHLETIC ASSOCIATION

The Women's Athletic Association sponsors intercollegiate basketball, volleyball, and tennis, and promotes special events in field, track and play days.

The intramural program includes softball, basketball, croquet, tennis, horseshoes, soccer, hiking, table tennis, and archery. Points are awarded for participation in these activities, and the awards consist of a bronze intramural medal, college letter and sweater.

MARGARET TREXLER  
President

DORIS HOLLOWELL  
Vice-President

MILDRED HOLLOWELL  
Secretary

MYRTLE HOPKINS  
Treasurer





## "SPOTS OF SPORTS"

THIS STROKE TELLS THE TALE

THE TARGET'S BEHIND YOU, RUTH

WONDER HOW LONG SHE CAN STAY UP SIDE  
DOWN.

OVER THE FENCE IS OUT

HEY, THIS IS SUPPOSED TO BE A HI'E



## HEADS OF DEPARTMENTS

- MARGARET TREXLER ..... Intramural Manager
- RUTH PARKER ..... Head of Archery
- EUNICE GRIGGS ..... Head of Volley Ball and Soccer
- EOFIS HOLLOWELL ..... Head of Basketball
- EVA McMILLAN ..... Head of Hiking
- MOZELLE PERNELL ..... Head of Softball
- NANCY ALBRIGHT ..... Head of Tennis

TREXLER

PARKER





**SOCCKER**—The soccer team, organized for the first time on our campus this year under the direction of Miss Norton, has had a very successful beginning.

**VOLLEY BALL**—The volley ball team created quite a bit of interest on campus this year in that everyone was given the chance to try out.

**HIKING**—Everyone enjoys hikes in the country on Saturday afternoon. Our hikes consist of supper hikes, breakfast hikes and hikes to places of interest near the campus.

**TENNIS**—Tennis is one of the most popular sports sponsored during the year.

**ARCHERY**—Should you walk down back campus and feel something whiz through the air on a bright, spring day, don't be surprised. It's only the archery team practicing!

**BASEBALL**—When spring comes, you may be sure to find a large group of girls on back campus playing softball. And believe it or not—some of them can swing a wicked bat!

GRIGGS

HOLLOWELL

McMILLAN

PERNELL

ALBRIGHT





## DORMITORY HEADS

WILSON HALL  
MARY GRACE SIVERTSEN

JARVIS HALL  
MARGARET WOOD

FLEMING HALL  
"KIM" TOMLINSON

COTTEN HALL  
HELEN WOLFE

# ALL-STAR INTRAMURAL CHAMPIONS

## BASKETBALL TEAM

### First Row:

DORIS HOLLOWELL  
ESTELLE EDWARDS  
MARGARET WOOD  
RUTH PARKER  
EVA McMILLIAN  
"KIM" TOMLINSON

### Second Row

MARY MULLINS  
MYRTLE HOPKINS  
EILEEN TOMLINSON  
ELSIE GUPTON  
EUNICE GRIGGS  
MARGARET TREXLER





## SOCCER TEAM

ANNIE L. PARKER  
 MABEL SMITH  
 ELLEN McINTYRE  
 GENNIE HINSON  
 ELIZABETH NOE  
 KATE EAKER  
 MARGARET WOOD  
 VILEIGH AUSTIN  
 "DOT" DALYRYMPLE  
 RUTH PARKER  
 EILEEN TOMLINSON



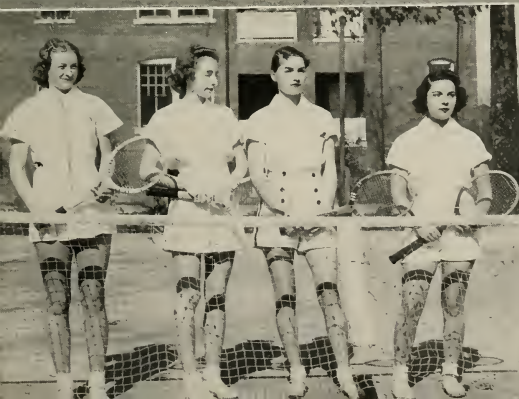
## VOLLEY BALL

Left to Right  
 First Row.

"KIM" TOMLINSON  
 MOZELLE PERNELL  
 DORIS ROBERTS  
 KATE EAKER  
 ELSIE GUPTON

Back Row:

MYLDRED GUPTON  
 AILEEN BREWER  
 RUTH PARKER  
 VILEIGH AUSTIN  
 EILEEN TOMLINSON  
 MARY MULLEN



## TENNIS

RUTH PARKER  
 PRUE NEWBY  
 NANCY ALBRIGHT  
 MARY FRANCES BYRD

book five





*Dorothy Reed Miller*



*Juanita Etheridge*





*Jeanette Earley*

*Lucille Lewis*





*Nell Perry*

*Hattie Laura Britt*





*Marjorie Watson*



*Nellie Webb*





# ADVERTISEMENTS

**E F I R D ' S**

*Make Our Store Your Headquarters  
When Shopping*  
**NEWEST PATTERNS AND STYLES**  
Greenville, N. C.

*Compliments of*

**HILL HORNE'S DRUG STORE**  
Greenville, N. C.

*On and Off the Campus  
Look For*

**NISBET-PROCTOR'S**  
CUTE CLOTHES

**PEOPLES  
BAKERY**

*Patronize the  
College "Y"  
Store*

*Congratulations  
To The*

***Graduating Class  
of 1939***



*And Best Wishes  
To Those Who  
Seek Their  
Goal*



**BELK-TYLER CO.**  
**GREENVILLE'S SHOPPING CENTER**  
Greenville, N. C.

*For 19 Years  
The Largest And  
Most Complete  
Department Store  
in  
Eastern Carolina*

**BLOUNT - HARVEY**

**COCA-COLA BOTTLING  
COMPANY**

*Coca-Cola*

630 Pitt Street

Greenville, N. C.

Repair Your Shoes and Dye Them

at

**NORFOLK SHOE SHOP**

Greenville, N. C.

**TOMORROW'S STYLES TODAY**

**SALLY FROCKS**

*Smart Clothes for Smart Girls*

Greenville - Fayetteville - Wilmington  
Rocky Mount

*Ask Your Friends About*

*Our Service — They Know*

**CITY SHOE SHOP**

Greenville, N. C.

**The Little Store With  
The Big Heart**

With Style First for the  
E. C. T. C. Girls

**WILLIAMS'**

*The Ladies' Store*

**BEST JEWELRY COMPANY**

*"Eastern Carolina's Leading Jeweler"*

Established 1901

QUALITY • VALUE • SERVICE

*"YOUR JEWELERS"*

*Compliments of*

**WHITE'S STORES, INC.**

Greenville, N. C.

**Distinctive Apparel  
For Women**

*We Show the New Things First*

**C. HEBER FORBES**

Greenville, N. C.

**B R O D Y ' S**  
LADIES' DEPARTMENT STORE

*Style • Quality*  
*Economy*

*Compliments of*

**KARES BROS.**

Restaurant, Soda and News Service

*"We Serve the Best"*

Tune in Every Night C.B.S.  
**ROYAL CROWN PROGRAM**

with  
**Believe It Or Not Ripley**

9:30 P. M.

*Approved by Good Housekeeping*

**Everything In**  
COSMETICS

SODA FOUNTAIN • LUNCHEONETTE

**BISSETTE'S**  
RENT STORE

Near Five Points

*Compliments of*  
**GREENVILLE FLORAL**  
**COMPANY**

Telephone 443

**Photographs**  
**BAKER'S STUDIO**

Greenville, N. C.

ALL WORK GUARANTEED

**COBURN SHOE CO.**

*"Your Shoe Store"*

Ask Your Friends About  
Our Shoes—They Know

Greenville, N. C.

**THE RIGHT PRICE**  
**FURNITURE STORE**

*Complete Line of Home Furnishings*

701 Dickinson Ave. Greenville, N. C.

Phone 79



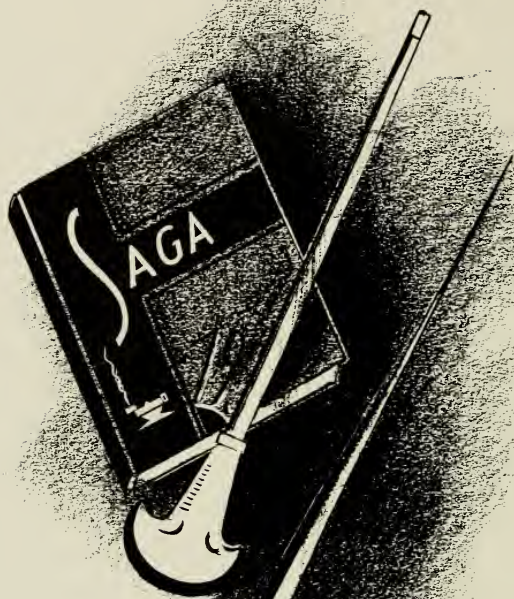
DUNBAR and DANIEL

*Fine Portraits*

132 Fayetteville Street

Raleigh, N. C.

OFFICIAL PHOTOGRAPHERS  
FOR  
The 1939 TECOAN



**CHARLOTTE ENGRAVING CO.**

*School Annual Engravers*

Charlotte, North Carolina

# ***School Publications***



The many high awards won each year by school publications produced by us is the result of many years' specialization based on a comprehensive knowledge of art motifs, design, layout and publication trends.

A modern printing plant, operated by highly efficient craftsmen in every department, provides a quality and distinctiveness that is unsurpassed.



**The LASSITER PRESS, Inc.**

QUEEN CITY PRINTING COMPANY

**CHARLOTTE, NORTH CAROLINA**









JOYNER



30372 0104 0227 6



UEMCO

