


Tecoan



1937



Digitized by the Internet Archive
in 2010 with funding from
University of North Carolina at Chapel Hill

<http://www.archive.org/details/tecoan1937east>

7

.. THE NINETEEN THIRTY SEVEN...

Jecoan



COPYRIGHT NINETEEN THIRTY SEVEN

Maggie Crumpler, EDITOR

Beatrice Hammond, BUS. MGR.



THE NINETEEN THIRTY



SEVEN

ecoan

Published by the Student Body of the East
Carolina Teachers College of Greenville, N. C.



DEDICATION

To MISS LORAIN HUNTER, who has taught us the truth and beauty of life and who, through the idealism of her personality and inspiration of her friendship, has taught us something of its significance, we, the student body of East Carolina Teachers College, affectionately dedicate the 1937 edition of the TECOAN.

THE
EAST CAROLINA COLLEGE
LIBRARY
COLUMBIA, MISSOURI

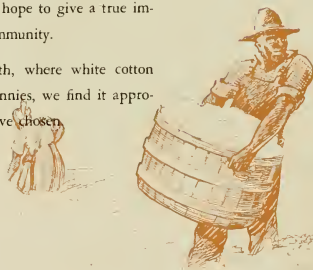


296994

Foreword

Out of the old South has grown the South of today, and in the new order the Negro still has a place. He is a symbol of one phase, at least, of Southern life, even though many Southerners are reluctant to admit it. With this idea in mind, we have chosen as our theme "Cotton in Relation to the Negro Life of the South". By suggesting the domestic, industrial, recreational, and spiritual life of the Southern Negro, we hope to give a true impression of life in a North Carolina community.

Thus, because we live in the South, where white cotton fields are dotted with little brown picaninnies, we find it appropriate to use as a motif the scenes we have chosen.



Contents

BOOK I	COLLEGE
BOOK II	CLASSES
BOOK III	ORGANIZATIONS
BOOK IV	ATHLETICS
BOOK V	FEATURES



Here and there through the South the traveler sees three-room structures of mud-chinked logs. Inside he would see bare walls and furniture either home-made or obtained from pieces discarded by the "white folks". Undisturbed by her surroundings mammy sings over her cooking of collards and 'possum. Here is a home typical of those dotting our fields.

The COLLEGE





VIEWS















LEON R. MEADOWS
President



A Message To The Students

This message has in it three ideas:
First; Success will come to you only through your own efforts. Do not rely upon "pull" for advancement, but depend upon "push" and energy. Hard work, properly directed, will not only prepare for greater service, but will insure against the pitfalls of indolence.

Second: A strong personality is worth far more than material wealth. Nothing really worthwhile has ever been accomplished without the influence of a great personality back of it. Strive earnestly to develop those characteristics which will enable you to achieve the best that your capacities will permit.

Third: Service to others should be the purpose of all effort. Do not let the lack of opportunities discourage you. Do well the small tasks which come to hand and soon society will burden you with heavy responsibilities.

From Blledows,

MISS ANNIE L. MORTON

When Miss Morton began her duties as Dean of Women at East Carolina Teachers College in 1925, she entered wholeheartedly into the enterprise of making this institution one of the outstanding colleges of our country. With ceaseless effort and undaunted spirit, she is accomplishing her purpose. Miss Morton understands young women and helps young women to understand themselves. Those girls who have come to her with their problems have found that she is always willing to help them and they go away with a clearer understanding and a possible solution.

DR. HERBERT REBARKER

Dr. Herbert ReBarker was made Dean of Men at East Carolina Teachers College in 1933. Dr. ReBarker inspires the confidence of his students. With an open mind, he welcomes their arguments, offers advice, and is deliberate in his criticism, at all times showing a thoroughly democratic attitude.



MORTON



REBARKER

THE FACULTY

On March 8, 1907, a bill was passed in the North Carolina Legislature providing for the establishment of East Carolina Teachers College. When the college opened October 5, 1909, there were thirteen staff members including the faculty, President, lady principal, and college doctor. They were: Dr. Robert H. Wright, Claude W. Wilson, W. H. Ragsdale, Leon R. Meadows, Mamie E. Jenkins, Maria D. Graham, Sallie Joyner Davis, Birdie McKinney, Kate W. Lewis, Fannie M. Bishop, Mrs. Kate R. Beckwith, Herbert E. Austin, and Dr. Charles Laughinghouse.

By the end of the first year two additions had been made and there has been an annual increase in the staff to accompany the gradual but steady expansion of the college. Now there are well over a hundred staff members in fifteen departments.

Thirteen years after the opening of the college all but three of the original staff remained in the employment of the college. At present there are five active charter members on the campus. They are: Dr. Leon Meadows, Mamie E. Jenkins, Maria D. Graham, Sallie Joyner Davis, and Kate W. Lewis.

In the past year there have been eight new faculty members and several other staff members added; and with an increasing enrollment we expect other additions before the opening of the next school year.

Our faculty members are well prepared in their various fields, and they are vitally interested in the students. It is their untiring efforts to serve the students and our personal contact with them that makes our college life so enjoyable.



FACULTY

DORA COATES
Education

LUCILLE CHARLTON
Education

ANNIE C. NEWELL
Education

HUBERT C. HAYNES
Psychology

LUCILE TURNER
English

MAMIE E. JENKINS
English

EMMA HOOPER
English

LOIS GRIGSBY
English

LUCILLE NORTON
Physical Education

R. C. DEAL
*Director of Instruction
in Foreign Language*

A. D. FRANK
*Director of Instruction
in History*

E. C. HOLLAR
History

R. L. HILLDRUP
History

LAURA ROSE
History

SALLIE JOYNER DAVIS
History

M. L. WRIGHT
*Director of Instruction
in Economics and Sociology*

BEECHER FLANAGAN
Economics

GUSSIE KUYKENDALL
*Director of Instruction
in Public School Music*





FACULTY

LOIS GORRELL
Music

DORA MEADE
Music

KATE LEWIS
*Director of Instruction
in Public School Art*

DOROTHY SYNDER
Art

R. J. SLAY
*Director of Instruction
in Science*

HELEN SPANGLER
Science

LORAIN HUNTER
Science

JESSIE MACK
Science

P. W. PICKLESIMER
*Director of Instruction
in Geography*

J. B. CUMMINGS
Geography

MARIA GRAHAM
Mathematics

LOUISE WILLIAMS
Mathematics

E. R. BROWNING
Business Administration

MAUDE ADAMS
Business Administration

JAMES GULLEDGE
Librarian

MARGARET SAMMON
Assistant Librarian

M. K. FORT
Psychology

E. L. HENDERSON
Education



FACULTY

MARY BERRY CLARK
Home Economics

MRS. ADELAIDE BLOXTON
Home Economics

BOLEY FARLEY
Athletics

LEMAR STEPHAN
Geography

MARY GREENE
English

DENVER BAUGHAN
English

EUNICE MCGHEE
Critic Teacher Third Grade

CLEO RAINWATER
Critic Teacher Fifth Grade

ELIZABETH HYMAN
Critic Teacher Sixth Grade

RUTH FAISON
Critic Teacher First Grade

KATHLEEN PLUMB
Critic Teacher Seventh Grade

T. C. BRYAN
Critic Teacher in History

ALMA BROWNING
Critic Teacher Fourth Grade

FRANCES WAHL
Principal Training School

GLADYS HUGHES
Critic Teacher Fifth Grade

DEANNIE BOONE HASKETT
Critic Teacher in English

LOUISE GALPHIN
Critic Teacher Fourth Grade

MRS. LINDSAY SAVAGE
Critic Teacher Third Grade





FACULTY

ANNE REDWINE
Critic Teacher First Grade

J. H. ROSE
*Superintendent of City Schools
and Director of Critic Teaching*

R. S. FLEMING
Critic Teacher in Science

RUFUS JOHNSON
Bookkeeper

MRS. MILDRED OWENS
Secretary

F. D. DUNCAN
Treasurer

OLA S. ROSS
Assistant Registrar

HAZEL WILLIS
Secretary

H. J. MCGINNIS
Registrar

DR. F. P. BROOKS
College Physician

MRS. A. A. HARRELL
Dietitian

MRS. L. L. RIVES
Dietitian

ELIZABETH SMITH
Assistant Dean of Women

MRS. W. G. MCKEAN
Dormitory Matron

ARLEY V. MOORE
Housekeeper

MRS. MAMIE BRADSHAW
Dormitory Matron

AGNES WADLINGTON
Secretary to the President

MARY LEA SMITH
Assistant Superintendent of Infirmary



The Negro's happy nature is reflected in his enjoyment of music and dancing. He is often seen cutting a "pigeon's wing" to the "plink, plunk" of his banjo, or following his coon dog on a wild chase. The Negro finds ample opportunity in the South to participate whole-heartedly in his own simple forms of recreation.

The CLASSES



In Memoriam

MRS. NANNIE F. JETER

Dietitian

SEPTEMBER, 1916

JUNE, 1936

MISS ANNIE E. MORRIS

Superintendent of Infirmary

SEPTEMBER, 1926

JUNE, 1934

MRS. MAMIE G. BRADSHAW

Dormitory Matron

SEPTEMBER, 1928

DECEMBER, 1936



RUTH CAGLE
President



SENIOR CLASS

In a sketch of the Senior Activities, no detailed account would be attempted. We have tried to keep up the Senior traditions by giving the plays and parties planned, and the results of our activities were more pleasing than the outlook in the middle of the preparation. As Seniors, we look back over our years here, and realize that they were probably the happiest of years of life.



MARION WOOD
Vice-President



RUBY LEE PEACOCK
Secretary



EVANGELINE BARFIELD
Treasurer

SENIORS

ELLA TURNER ATKINS
LILLINGTON, N. C.

Flora Macdonald College (1); Y.W.C.A. (2, 3, 4);
Lanier Society (2, 3, 4); Primary Club (4).

EMILIE AVENT
WHITAKERS, N. C.

Primary Education

Louisburg College (1, 2); Y.W.C.A. (3); Primary
Club (3); Poe Society (3, 4).



MARIBLAND ALBRITTON
KINSTON, N. C.

Grammar Grade

Poe Society (1, 2); W.A.A. (2); D. Class Play (2);
Senior Play (4); Y.W.C.A. (1).

DOVE ALLEN
MARSHVILLE, N. C.

English and History

Wingate Junior College (1, 2); Poe Society (3,
4); English Club (5).



SENIORS

MARY ROSE BADGETT
DENTON, N. C.

Home Economics and Science

Y.W.C.A. (1, 2, 3); Science Club (1, 2, 3, 4);
Lanier Society; Delta Omicron Sigma.

LUCILLE BAILEY
WAKE FOREST, N. C.

Grammar Grade

Y.W.C.A. (1, 2, 4); Y.W.C.A. Choir (2, 4);
W.A.A. (2); B.S.U. (1, 2, 4); Granville County Club
(1, 2, 4); Emerson Society (1, 2, 4); Student Volunteer
Band (2); Wake Forest College (3).



RANNIE BAKER
PINK HILL, N. C.

Grammar Grade

Campbell College (1, 2); Poe Society (3, 4);
W.A.A. (3).

WESLEY BANKSTON
MACON, GEORGIA

Science and Social Science



SENIORS

FRANCES BARNES
LEAKSVILLE, N. C.

English and Science

Mars Hill College (1, 2); *Teco Echo* Staff (4);
Student Government Council (4); English Club Pres-
ident (4); Senior Play (4).

NANCY ROSE BARNES
FOUR OAKS, N. C.

Primary Education

Poe Society (1, 2, 3, 4); Y.W.C.A. (1, 2, 3, 4).



EVANGELINE BARFIELD
MOUNT OLIVE, N. C.

French and English

Emerson Society (1, 2, 3, 4); Phi Sigma (2, 3, 4),
Secretary-Treasurer (3), Vice-President (4); Eng-
lish Club (3, 4); Y.W.C.A. (3, 4); Senior Class Offi-
cer (4).

CLARISE BARNES
WENDELL, N. C.

Primary Education

Poe Society (1, 2, 3, 4); Primary Club (4).



SENIORS

MYRTLE BASS
GOLDSBORO, N. C.
Grammar Grade

Poe Society (1).

ESSIE MAE BATTEN
SELMA, N. C.
Grammar Grade

Y.W.C.A. (2, 3, 4); B.S.U. (3); Math Club (2).



MRS. SUE H. BOWDEN
GREENVILLE, N. C.
History and English

SAXON BRAY
WINSTON-SALEM, N. C.
History and French

Poe Society (1, 2, 3, 4); Phi Sigma (2, 3, 4); Senior Play (4).

SENIORS

MILDRED BROADWELL
HOLLY SPRINGS, N. C.
Primary Education

ERNELLE BROOKS
GREENVILLE, N. C.
Primary Education



MARGARET BRASWELL
UNIONVILLE, N. C.
History and Science

SALLIE LEE BREWER
WINDSOR, N. C.
Grammar Grade

Poe Society (1, 2, 3, 4); Wake Forest Summer School (3).



SENIORS

GENEVA BROWN
WOODLAND, N. C.

English and History

TECUM Representative (1); Sophomore Class President (2); Lanier Society (1, 2, 3, 4); English Club (2, 3).

ROSA LEE BULLOCK
BETHEL, N. C.

Primary Education

Lanier Society (1, 2, 3, 4).



MRS. CORA JOHNSTON BUNDY
BELHAVEN, N. C.

Primary Education

MILDRED BURKE
GOLDSTON, N. C.

Primary Education

Appalachian State Teachers College (1, 2); Lanier Society (3, 4); Primary Club (3, 4); Y.W.C.A. (3, 4).



SENIORS

MOLLIE CARTWRIGHT
BATH, N. C.
Grammar Grade

OLETA CHAMBLEE
ZEBULON, N. C.
Primary Education

Y.W.C.A. (4); Primary Club (4); Proctor (S.S.)
(1); Vice-President Class (3); W.A.A. (4); Proctor
(3).



RUTH JOYCE CAGLE
RUTHERFORDTON, N. C.
Home Economics and Science

Delta Omicron Sigma (1, 2, 3, 4); Science Club
(1, 2); Emerson Society (1, 2, 3, 4); *Teco Echo* Re-
porter (3); Emerson Marshal (3); Inter-Society
Committee (4); Athletic Association (1); Associate
Editor *TECOAN* (2, 3); Class Cheerleader (1); Ex-
ecutive Committee (4); President of Class (4).

GENEVIEVE CARROW
EDWARD, N. C.

History and Science
Poe Society (1, 2); Science Club (1, 2, 3, 4).



SENIORS

CALLIE CHARLETON
MOYOCK, N. C.

Home Economics and Science
Junior Y.W.C.A. (1); Y.W.C.A. (1, 2, 3);
Y.W.C.A. Cabinet (2); Delta Omicron Sigma (1, 2,
3); Science Club (1, 2, 3); Emerson Society (1, 2,
3); Marshal (2); W.A.A. (1, 2, 3); Archery Intra-
mural Head (2, 3); B.S.U. (1, 2, 3); Senior Class
Superlative.

LUCILLE CLARK
GRIMESLAND, N. C.
Grammar Grade

Emerson Society (1, 2, 3, 4); Y.W.C.A. (1, 2, 3,
4); Science Club (2, 3, 4); TECOAN Representative
(2); Athletic Association (2); TECOAN Business Staff
(4); Methodist Student Organization (4).



ONIE COCHRAN
ARDEVILLE, SOUTH CAROLINA
English and Science

Teco-Echo Reporter (1); Poe Society (1, 2, 3, 4);
Science Club (1, 2, 3, 4); English Club (2, 3, 4);
Entertainment Committee (3); Budget Committee.

VIRGINIA COOPER
BELHAVEN, N. C.
Primary Education

Page Thirty-seven

SENIORS

FRANCES CRADDOCK

EMPORIA, VIRGINIA

Grammar Grade

Lanier Society (1, 2, 3); Proctor (3).

JOHN R. CREW, JR.

WELDON, N. C.

English and Science

A.S.T.C. (1, 2, 3); *Teco Echo* Staff (4); Poe Society (4); English Club (4); Science Club (4).



MILDRED CORBETT

TURKEY, N. C.

Grammar Grade

Poe Society (1, 2, 3, 4); Society Treasurer (3); Society Vice-President (4).



WILLIE GRAY COX

WINTERVILLE, N. C.

English and French



SENIORS

WINONA CURLEE
COLUMBIA, S. C.

Primary Education

Poe Society (1, 2, 3, 4); Primary Club (1).

FRANCES CURRIN
ANGIER, N. C.

English and History

Campbell College (1, 2); Y.W.C.A. (3, 4); Y.W.-
C.A. Cabinet (1); Glee Club (3); English Club (3,
4); Secretary (1); B.S.U. Council (3, 4); Senior Class
Superlative (4).



LOUISE CURRIN
GREENVILLE, N. C.

Primary Education

Poe Society (3, 4).

HAZEL DANIEL
WAKE FOREST, N. C.

Commerce

Campbell College (1); Western Carolina Teachers
College (2); Commerce Club.



SENIORS

VERDESSA DILDAY
AHOSKIE, N. C.

History and English

MARGUERITTE DIXON
BURLINGTON, N. C.

Grammar Grade



ISABEL DAVENPORT
PLYMOUTH, N. C.

Grammar Grade

Y.W.C.A. (1, 2, 3, 4).

JUANITA DAVIS
FREMONT, N. C.

Grammar Grade

Emerson Society (1); Y.W.C.A. Junior Cabinet
(1); Chairman Social Service Committee (2), Treasurer Y.W. (4).

SENIORS

JUDITH DU PREE
MIAMI, FLORIDA

French and English

Transfer from University of Miami.

FLORENCE ESTELLE EAGLES
PINETOPS, N. C.

Grammar Grade

St. Mary's Junior College (1); Lanier Society (2, 3, 4).



ETHEL EAKES
OXFORD, N. C.

French and History

Campbell College (1, 2).

MARGARET EAKES
GREENVILLE, N. C.

Grammar Grade

Lanier Society (3, 4); Day Student Club (2);
Pitt County Club (2); Y.W.C.A. (4); Vice-President
of B.S.U. (4); Assistant Business Manager of
TECUM (4); Proctor (4).



SENIORS



JEANETTE EDWARDS
AYDEN, N. C.
Primary Education



FRANCES EDGERTON
GOLDSBORO, N. C.
Primary Education

Y.W.C.A. (1, 2, 3, 4); Junior Y.W.C.A. Cabinet (1); Y.W.C.A. Cabinet (4); Lanier Society (1, 2, 3, 4); Student Volunteer (1, 2), Vice-President (2); Primary Club (3); A.C.E. President (4); B.S.U. President (2, 3); S.G.A. Class Representative (3, 4); Class Secretary (2).

CHESIE EDMUDSON
TARBORO, N. C.
Primary Education



MARY EVERETTE
ROBERSONVILLE, N. C.
Grammar Grade



SENIORS

CHRISTINE FOWLER
ZEBULON, N. C.

Primary Education

Emerson Society (1, 2, 3, 4); Primary Club (3, 4);
Y.W.C.A. (2, 3, 4).

MELROSE GARDINER
DUNN, N. C.

Primary Education



MARGARET GARNER
GREENVILLE, N. C.

History and French

GLADYS GASTON
GREENVILLE, N. C.

History and English

Lanier Society (1, 2, 3, 4); W.A.A. (1, 2); Science
Club (3, 4); Town Girl's Club (3, 4); Scribbler's Club
(1); Basketball (1).



SENIORS

ALICE HACKETT
BELHAVEN, N. C.
Primary Education

BONNIE MAE HALL
ROSEBORO, N. C.
Primary Education

Pineland Junior College (1, 2); Glee Club (3, 4);
Poe Society (3, 4); Y.W.C.A. (3).



EUNICE GREENE
OXFORD, N. C.

Grammar Grade

Y.W.C.A. (1, 2, 3, 4); Lanier Society (3, 4);
W.A.A. (4); Wake Forest Summer School (3).

W. T. GIBSON
ROPER, N. C.
History and Social Science



SENIORS

BEATRICE HAMMOND
ANDREWS, S. C.
Grammar Grade

Y.W.C.A. (1); Emerson Society (1, 2, 3, 4); Vice-President "C" Class (1); Junior Cabinet (1); Marshal (2); Business Staff TECOAN (2, 3); Superlative (2); Vice-President Emerson Society (3); Secretary Emerson Society (4); Business Manager TECOAN (4); Delegate to N. C. C.P.A. (1); Publications Board (1).

BEULAH HANSLEY
FOLKSTONE, N. C.
Primary Education

Pineland Junior College (1, 2); Jones Society (1, 2); Program Committee (2); Alpha Phi Omega (2); Social Committee (2); D.P. Club (1, 2); Mission Band (1, 2).



HELEN L. HARDY
MAURY, N. C.

Primary Education

W.C.U.N.C. (1); Lanier Society (2, 3, 4); W.A.A. (3); Y.W.C.A. (2, 3, 4); Primary Club (2, 3, 4).

EULA MAE HARGETTE
WINGATE, N. C.

Home Economics and Science

Wingate Junior College (1); Poe Society (2, 3, 4); Delta Omicron Sigma (2, 3, 4).



SENIORS

MILDRED HERRING
GREENVILLE, N. C.
Primary Education

JULIA HILDRETH
MARSHVILLE, N. C.
Primary Education

Y.W.C.A. (1, 2, 4); Poe Society (1, 2, 4); Y.W.-
C.A. Choir (1, 2); Glee Club (4); Cheerio Club (1,
2); Science Club (2, 4); Primary Club (4); Union
County Club (1, 2).



GENEVA HARRELL
COLERAIN, N. C.
Grammar Grade

HENRY HATSELL
BEAUFORT, N. C.

Science and Social Science

Wake Forest College (1, 2); Football (3, 4); Base-
ball (3, 4); Varsity Club (3, 4); Poe Soci ty (3, 4);
Science Club (3, 4).



SENIORS

MARTHA HINES
WARSAW, N. C.

Primary Education

Emerson Society (1, 2, 3, 4); Primary Club (3, 4);
A.C.E. (4); Treasurer of Sophomore Class (2);
Teehan Representative (3).

PAULINE HOOKER
AURORA, N. C.

Primary Education

Y.W.C.A. (1, 4); Poe Society (1); Primary Club
(3, 4); Vice-President Primary Club (4).



HATTIE HUDGENS
SUNBURY, N. C.

Primary Education

Poe Society (1, 2, 3, 4); Primary Club (3, 4).

MILDRED ILEY
HARRISBURG, N. C.

Science and Home Economics



SENIORS

MAE ELLEN JOHNSON
BENSON, N. C.

Primary Education

Y.W.C.A. (1, 2, 3, 4).

MELVA JOHNSON
GREENVILLE, N. C.

Mathematics and French

Emerson Society (1, 2, 3, 4).



LOUISE W. JAMES
WEKESVILLE, N. C.

Grammar Grade

Lanier Society (1, 2, 3, 4); Y.W.C.A. (3, 4);
Cheerio Club (1); Vice-President Lanier Society (3);
Marshal (3, 4); Social Committee (3, 4); Intersociety
Committee (2, 3).

ELIZABETH DIXON JOHNSON
GOLOSROBO, N. C.

Home Economics and Science

Y.W.C.A. (1, 2, 3, 4); Y.W.C.A. Cabinet (4); Poe
Society (1, 2, 3, 4); Vice-President (2); President (3);
Intersociety Committee (3); Delta Omicron Sigma
(1, 2, 3, 4); Science Club (1, 2, 3, 4); W.A.A. (4);
Sophomore Council Representative (2); House Presi-
dent (3); N.C.S.F. Delegate; N.S.F.A. Delegate (4);
Senior Superlative; President Women's Student Gov-
ernment Association (4).



SENIORS

ERNESTINE JONES
BUNN LEVEL, N. C.

French and History

Campbell Junior College (1, 2).

LOVE PRECIOUS JONES
PINK HILL, N. C.

Grammar Grade

Poe Society (1, 2, 3, 4); Cheerio Club (1).



BELLE KEARNEY
OXFORD, N. C.

Mathematics, French and English

Poe Society (1, 2, 3, 4); Vice-President of Class (2); Treasurer of Class (3); Class Supr'lative (4); Student Treasurer (3, 4); House President (4); Mathematics Club (2, 3, 4), Vice-President (3); Phi Sigma (3, 4); Secretary-Treasurer (4); Y.W.C.A. (3); Granville County Club; B.S.U. Treasurer (4).

IRENE KENNEDY
KINSTON, N. C.

Home Economics and Science

Y.W.C.A. (3); W.A.A. (1, 2, 3); Science Club (1, 2, 3, 4); Delta Omicron Sigma (1, 2, 3, 4).



SENIORS

SYLVIAN KNOWLES

COLUMBIA, N. C.

Grammar Grade

Poe Society (1, 2, 3, 4); Proctor (3); House President (4).

MARY LANIER

LILLINGTON, N. C.

Grammar Grade



RUTH KIKER

POLKTON, N. C.

Primary Education

Y.W.C.A. (1, 2, 3, 4); Emerson Society (1, 2, 3, 4); Marshal (3, 4); W.A.A. (1, 2); Ticoan Representative (2); S.G.A. Council (3); N.C.F.C. Delegate (2, 3); Secretary of N.C.F.S. (4); Primary Club (3, 4); Vice-President (3); Social Committee (4); Secretary of N. C. Methodist Student Conference (3); President of N. C. Methodist Student Conference (4).

ALMA KING

HAMPSTEAD, N. C.

Primary Education

Y.W.C.A. (2); Poe Society (1, 2); Student Volunteer (1, 2, 3).



SENIORS

HAZEL LAWRENCE
GATES, N. C.

Grammar Grade

Po' Society (1, 2, 3, 4); Y.W.C.A. (1, 2, 3); Y.W.
C.A. Choir (2, 3).

MAYO LEE
WILLOW SPRINGS, N. C.

Grammar Grade

Lanier Society (1, 2, 3); W.A.A. (2, 3); Glee Club
(2, 3).



ALMA LEWIS
GREENVILLE, N. C.

Grammar Grade

Emerson Society (1, 2, 3, 4); Pitt County Club (3,
4); Science Club (2, 3, 4).

MAVIS LEWIS
ROPER, N. C.

Primary Education

Lanier Society (1, 2, 3, 4).



SENIORS

RUBY LEE LYNCH
MILL SPRINGS, N. C.

Home Economics and Science

IRENE MANESS
BUYES CREEK, N. C.
Grammar Grade

Campbell College (1, 2); Y.W.C.A. (4); B.S.U.
Council (4).



CHRISTINE LINDSEY
L'UMBERTON, N. C.
Grammar Grade

BOOSTER LINDSEY
NACOGDOCHES, TEXAS
Social Science



SENIORS

FANNIE LATHAM MARTIN
JAMESVILLE, N. C.
Primary Education

ETHEL MCCORMICK
LAURINBURG, N. C.
Primary Education

Lanier Society (1, 2); Y.W.C.A. (1, 2).



HELEN MCDANIEL
WOODLAND, N. C.
Grammar Grade

Chowan College (1, 2, 3); Lanier Society (4).

BROWN MCLAWHORN
WINTERVILLE, N. C.
Grammar Grade



SENIORS

HELEN MOHN
NEW BERN, N. C.

French and History

Mars Hill Junior College (1, 2).

RACHEL L. MOORE
BATTLEBORO, N. C.

Primary Education



MABEL MCPHAUL
SHANNON, N. C.

Primary Education

Emerson Society (2, 3, 4).

MARY FRANCES MITCHELL
SNOW HILL, N. C.

Grammar Grade



SENIORS

EMMA MURRAY
WARSAW, N. C.

Primary Education

Lanier Society (1, 2, 4).

MARNITTE MURRAY
WADESBORO, N. C.

Primary Education



NAOMI NEWELL
SALEM, N. J.

English and History

Temple University (1); Y.W.C.A. (2, 3); Y.W.C.A. Cabinet (4); *Teco Echo* Staff (1); B.S.U. Council (2, 3); Poe Society (2, 3); English Club (4).

MARCELLE NICHOLSON
SAXAPAHAW, N. C.

Home Economics and Science



SENIORS

ALVAH PAGE
TRENTON, N. C.

History and Science

U.N.C. (2); Football (1); Basketball (1); Phi Sigma Pi Fraternity; Poe Society (1, 3, 4); Senior Plays (1, 3, 4); Science Club (3, 4).

ALDAH PARKER
CONETOE, N. C.

Grammar Grade

Lanier Society (1, 2); Y.W.C.A. (2); House President (2); Class TICOAN Representative (4).



MARGARET NORMAN
ROBERSONVILLE, N. C.

Primary Education

Y.W.C.A. (1, 2, 3, 4), Chairman Social Committee (2), Treasurer (3); Vice-President (4); Delegate to State Y.M.C.A. Y.M.C.A. Officers Training Conference Camp Nawakwa (2); Emerson Society (1, 2, 3, 4), President (4); Intersociety Committee (4), Chairman (4); President of Class (3), Executive Committee (3, 4); B.S.U. (3, 4); B.S.U. Council (3); W.A.A. (1); Editorial Staff TICOAN (2); Primary Club (3, 4); Childhood Educational Association (4).

LORENA ODOM
LUMBERTON, N. C.

Grammar Grade

Campbell College (1, 2); Robeson County Club (1, 2, 3, 4); Y.W.C.A. (3); Y.W.C.A. Choir (3, 4); Poe Society (3).



SENIORS

MARY ELIZABETH PARKER
POTECASI, N. C.

English, French and Mathematics

Lanier Society (1, 2, 3, 4); Math Club (1, 2),
Treasurer (1); Northampton Club (2, 3); Phi Sigma
(3, 4); English Club (4).

STUART PARRISH
LOUISBURG, N. C.

Home Economics and Science

Campbell College (1, 2); Wake Forest Summer
School (3); B.S.U. Council (3); Delta Omicron Sig-
ma (3, 4); *Toro Echo* Representative (4).



RUBY LEE PEACOCK
FREMONT, N. C.

Home Economics and Science

Home Economics Club (1, 2, 3, 4); Science Club
(1, 2, 3, 4); Y.W.C.A. (1, 2); Lanier Society (1, 2,
3, 4); Secretary Senior Class (4).

KATHERINE PERRY
HERTFORD, N. C.

Grammar Grade

Lanier Society (1, 2, 3, 4); Y.W.C.A. (4).



SENIORS

LUCILLE RAINES
PRINCETON, N. C.

Primary Education

MARGARET RAWLS
BAYSBORO, N. C.

Emerson Society (3, 4); Junior Y.W.C.A. Cabinet
(1); Y.W.C.A. (1, 2); University of N. C. (summer).



VIRGINIA PIERCE
GREENVILLE, N. C.

Primary Education

JOSEPHINE RANES
TARBORO, N. C.

Home Economics and Science

Lanier Society (1, 2, 3, 4); Scribblers Club (1);
Teco Echo (2); Business Manager (3); Science Club
(1, 2, 3, 4); Home Economics Club (1, 2, 3, 4).



SENIORS

BEATRICE S. REAVES
WARSAW, N. C.

Commerce, Mathematics, English, History

Y.W.C.A. (1, 2, 3); Emerson Society (1, 2, 3);
Commerce Club (3); Mathematics Club (1, 2, 3);
English Club (3); TECOAN Representative (3).

MABEL RICH
TOMAHAWK, N. C.

Home Economics and Science

Poe Society (1, 2, 3, 4); Delta Omicron Sigma (1,
2, 3, 4).



NELLIE RICKS
PENDLETON, N. C.
English and French

Chowan College (1, 2); Phi Sigma (3, 4); English
Club (3, 4); Marshal, Summer (3); S.G.A., Summer
(3).

KATHLEEN ROBERTSON
WENDELL, N. C.
Primary Education

Home Economics Club (1); W.A.A. (1); Y.W.C.A.
(1, 2, 3, 4); Y.W.C.A. Choir (2, 3); Poe Society (1,
2, 3, 4); Wake Forest Summer School (3); Primary
Club (3); A.C.E. (4).



SENIORS

SUSAN ROSE
GOLOSBO, N. C.

English, French and History

A.S.T.C. Summer School (2, 3); Y.W.C.A. (1, 2);
Emerson Society (1, 2, 3); English Club (2, 3); Phi
Sigma (2, 3).

HELEN SAWYER
GREENVILLE, N. C.

Primary Education

Glee Club (1, 2, 3, 4); Poe Society (1, 2, 3, 4).



MARTHA DEANS ROGERS
WILSON, N. C.

Mathematics and French

A.S.T.C. Summer School (3); Y.W.C.A. (1, 2, 3);
Science Club (1, 2, 3); Lanier Society (1, 2, 3);
W.A.A. (1, 2, 3); Phi Sigma (2, 3); *Teco Echo* Re-
porter (2, 3); Mathematics Club (1, 2, 3); A.C.C.
Summer School (2).

MAKENZIE ROSS
LILLINGTON, N. C.

Peace Junior College (1, 2); Y.W.C.A. (3, 4);
Lanier Society (2, 3, 4); W.A.A. (3, 4).



SENIORS

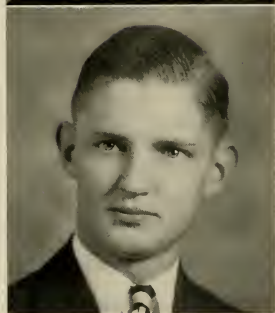
MARTHA SCOVILLE
GREENVILLE, N. C.

History and English

NETTIE BRETT SEWELL
AHOSKIE, N. C.

Grammar Grade

Y.W.C.A. Cabinet (4); *Teco Echo* Reporter (2);
Y.W.C.A. (1, 2, 3, 4); Poe Society (1, 2); Student
Volunteer Band (1, 2, 3); Proctor (2); Secretary of
Student Volunteer Band (3); Y.W.C.A. Choir (1, 2,
3, 4); Glee Club (3, 4); B.S.U. (2, 3).



MRS. ELSIE WINDHAM SIMPSON
GREENVILLE, N. C.

Grammar Grade

FRANCIS SINCLAIR
WILSON, N. C.

History and Mathematics

A.C.C. (1); Football (Varsity) (2, 3, 4); Baseball
(2, 3, 4); Tennis Champion (2, 3); Poe Society (2, 3,
4); Charter Member Tau Sigma Sigma (3); Secre-
tary and Treasurer (3); Charter Member Tau Chap-
ter Phi Sigma Pi (3, 4); Secretary (4); Varsity Club
(2, 3, 4); Secretary and Treasurer (4).



SENIORS

ALICE HICKS SMITH
GREENVILLE, N. C.

English and Science

Science Club (2, 3, 4); English Club (3, 4); Town
Girl's Club (2, 3); Lanier Society (1, 2, 3, 4).

BLANCHE SMITH
OAKBORO, N. C.

Grammar Grade



LOUISE SITTERSON
ROCKY MOUNT, N. C.

Grammar Grade

Poe Society (2, 4); Y.W.C.A. (2, 4); Scribbler's
Club (2).

WILLIAM S. SLEDGE
LOUISBURG, N. C.

Grammar Grade



SENIORS

ELMER SMITH
AYDEN, N. C.

History and Social Science

Men's Athletic Association (1); Poe Society (1, 2, 3, 4); Tau Sigma Sigma (3); Pitt County Club (3, 4); Baseball.

JULIA SMITH
DUDLEY, N. C.
Grammar Grade



RUTH SMITH
WINTERVILLE, N. C.
Grammar Grade

VIOLA SMITH
GOLDSBORO, N. C.
Grammar Grade

Lanier Society (1, 2, 3, 4); Secretary and Treasurer of Town Girl's Club (1, 2); Y.W.C.A. (3, 4); Y.W.C.A. Choir (3); Proctor (3); Associate Editor of *Teco Echo* (4); Chairman of Campus Committee, S.G.A. (4); Entertainment Committee (4); President of Methodist Student Association (4); Senior Superlative.



SENIORS

MARGARETTE STEPHENSON
BENSON, N. C.

Primary Education

NORA BOGART STEPHENSON
WINSTON, N. C.

Home Economics and Science

Lanier Society (1, 2, 3, 4); Science Club (2, 3, 4);
Delta Omicron Sigma; *Teco Echo* Reporter (3), Pres-
ident (3).



VIRGINIA CLARIS SMITH
RALEIGH, N. C.

Mathematics and Science

Poe Society (1, 2, 3, 4); Proctor (1, 2, 3); Math-
ematics Club (1, 2, 3, 4); *Teco Echo* Reporter (3);
Science Club (2, 3, 4); Y.W.C.A. (2); W.A.A. (1).

DELLA CLAIRE SNIPES
AHOSKIE, N. C.

Grammar Grade

Chowan College (1, 3); Lanier Society (2, 4);
W.A.A. (2).



SENIORS

DURWARD STOWE
MERRITT, N. C.

Science and History

V.P.I. (1); Varsity Club (2, 3, 4); Football (3);
Basketball (2, 3, 4); President of M.S.G.A. (3);
President of Executive Committee (3); Science Club
(3, 4), President (4).

JACKIE STRICKLAND
FOUR OAKS, N. C.

Primary Education



RUTH STYRON
PINE LEVEL, N. C.
Grammar Grade

CAMILLE SWINDELL
FAIRFIELD, N. C.
Grammar Grade

Y.W.C.A. (1, 2, 3, 4); Emerson Society (1, 2, 3, 4).



SENIORS

JENNIE GREEN TAYLOR
WILLIAMSTON, N. C.

Primary Education

President of Junior-Normal Class (1); *Teco Echo* Editorial Staff (3); Managing Editor of *Teco Echo* (2); Scribbler's Club (1, 2); Emerson Society (1, 2, 3, 4); Primary Club (3); A.C.E. (4); *Teco Echo* Reporter (4).

KATY JANE TAYLOR
RICHLANDS, N. C.

Grammar Grade



HAZEL E. TART
DUNN, N. C.

Primary Education

LOUISE LATHAN TAYLOR
COMO, N. C.

English and Science

Y.W.C.A. (1, 2, 3, 4); Poe Society (1, 2); Science Club (2, 3, 4); English Club (3, 4).



SENIORS

HELEN L. TAYLOR
SNOW HILL, N. C.

English and French

Y.W.C.A. (4); Emerson Society (1); Phi Sigma (3); English Club (4); President of Phi Sigma (4).

FLORA McIVER TEAGUE
SANFORD, N. C.

Grammar Grade



EVELYN L. THOMPSON
GOLDSBORO, N. C.

Grammar Grade

Y.W.C.A. (1); Poe Society (1, 2, 3, 4), Treasurer (4).

POLLY THOMPSON
GOLDSBORO, N. C.

Home Economics and Science

Science Club (1, 2, 3, 4); Delta Omicron Sigma (1, 2, 3, 4); Poe Society (1).

Page Sixty-seven



SENIORS

MARGARET WALKER
HILLSBORO, N. C.
Grammar Grade

Y.W.C.A. (1, 2, 3); Junior Y.W.C.A. Cabinet (1);
Poe Society (1, 2, 3, 4); Science Club (2, 3, 4);
Proctor (4).

CATHERINE WALLACE
KINSTON, N. C.
Primary Education

Junior Y.W.C.A. Cabinet (1); Senior Y.W.C.A.
Cabinet (2, 3, 4); Secretary of Student Volunteer
(2); Vice-President S.V. (3); Poe Society (1, 2);
Glee Club (3, 4); Proctor (3); S.G.A. (4); Treasurer
Primary Club (4); President of Y.W.C.A. (4).



CAMILLE TURNER
BOYKINS, VIRGINIA

French and History

S.G.A. (1); Lanier Society (1, 2, 3, 4); Class Su-
perlative (4); Phi Sigma (2, 3, 4); Y.W.C.A. (1, 4).

LOUISE TUTEN
EDWARD, N. C.

Primary Education

Poe Society (1); Primary Club (3, 4); Glee Club
(4); Proctor (4).



SENIORS

NOLA D. WALTERS
PRINCETON, N. C.

Grammar Grade

Y.W.C.A. (1, 2, 3, 4); Y.W.C.A. Senior Cabinet (3); S.G.A. (2); S.G.A. Secretary (summer); Poe Society (1, 2, 3, 4); Poe Society Secretary (3); Marshal (3); Chief Marshal (4).

CLARA WARD
EDENTON, N. C.

Grammar Grade

Lanier Society (1, 2, 3); Y.W.C.A. (1).



MARGARET WARREN
COLEMAN FALLS, VIRGINIA

Mathematics and Science

Louisburg College (1); Lanier Society (2, 3, 4); Science Club (3, 4); Mathematics Club (3, 4).

EFFIE LEE WATSON
WILSON, N. C.

Grammar Grade

A.C.C. (1); Y.W.C.A. (2, 3, 4); Y.W.C.A. Choir (2); Glee Club (2); W.A.A. (2); Delegate to N.C.-F.S. (2); Vice-President S.G.A. (3); Social Committee (3); Lanier Society (2, 3, 4); Marshal (3, 4); President of Society (1); Intersociety Committee (4); Editor of Handbook (3).



SENIORS

JUDSON WHITE
MOUNT CARMEL, ILL.

English and History

DePauw University (1, 2); St. Johns College (3);
Emerson Society (3, 4); English Club (4); Charter
Member Tau Sigma Sigma (3); Tau Chapter Phi
Sigma Pi (3, 4); Secretary (4); Student Council (4);
Budget Committee (4); Social Committee (4); En-
tertainment Committee (4); *Teco Echo* Staff (3).

MARGARET WHITEHEAD
MOREHEAD CITY, N. C.

English and French

Poe Society (1, 2, 3, 4); Phi Sigma (2, 3, 4);
English Club (4).



FLORENCE WELLS
DELCO, N. C.

Primary Education

Y.W.C.A. (2); Poe Society (1, 2); Proctor (1);
Cheerio Club (1); Columbus County Club (1).

BESS WHITAKER
DURHAM, N. C.



SENIORS

THELMA WHITEHEAD
ELM CITY, N. C.

Home Economics and Science

A.C.C. (1, 2); Lanier (3); Home Economics Club
(4); Science Club (3, 4).

CHRISTINE WILLIAMS
WINTERVILLE, N. C.

Science and Social Science



DOROTHY WILLIAMS
APEX, N. C.

Grammar Grade

Emerson Society (1, 2, 3, 4); Glee Club (1, 2, 3);
Y.W.C.A. (1, 2, 3, 4).

EDNA WILLIAMS
WINGATE, N. C.

Grammar Grade

Wingate Junior College (1, 2); Poe Society (3, 4).



SENIORS

ERNESTINE WILLIS

ST. PAULS, N. C.

Grammar Grade

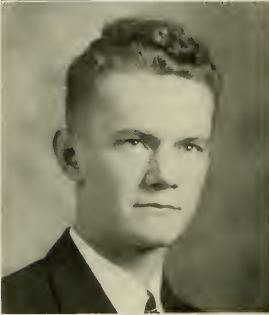
A.S.T.C. (1); Wake Forest Summer School.

DELLA GRACE WILSON

BENSON, N. C.

Primary Education

Poe Society (1, 2, 3, 4); Primary Club (3, 4);
W.A.A. (1, 2); Johnston County Club (1, 2);
TECOAN Representative of Johnston County Club (2);
Y.W.C.A. (4); Senior Superlative.



ELEASE WILLIAMS

CHATS, N. C.

Grammar Grade

Campbell College (1, 2); Poe Society (3, 4).

GEORGE S. WILLARD, JR.

RALEIGH, N. C.

Science and Mathematics

N. C. State College (1); Sports Editor *Teco Echo* (1, 2); Secretary M.A.A. (1); Scribblers Club (1); S.G.A. (2, 3, 4), Secretary (3); Science Club (2, 3, 4), Vice-President (3); Mathematics Club (2, 3, 4); Basketball Manager (3); Varsity Club (3, 4); Tau Sigma Sigma (3); Phi Sigma Pi (3, 4), Vice-President (4); Lanier Society (1, 2, 3, 4); Editor-in-Chief *Teco Echo* (4); Senior Class Superlative.



SENIORS

ANNIE EARLE WINDLEY
MOMEYER, N. C.

Primary Education

Poe Society (1, 2, 3, 4); Y.W.C.A. (1, 2); W.A.A. (1, 2, 3, 4); Primary Club (3); C.E.A. (4).

VALERIA WOMACK
BROADWAY, N. C.



DOROTHY WILSON
LOUISBURG, N. C.

Primary Education

Poe Society (1, 2, 3, 4); Y.W.C.A. (1, 2, 3, 4); Primary Club (3, 4); Science Club (2, 3, 4); A.C.E. (4); W.A.A. (3, 4).

MARY HELEN WILSON
LOUISBURG, N. C.

Grammar Grade

Poe Society (1, 2, 3, 4); W.A.A. (1, 2, 3, 4); Y.W.C.A. (1, 2, 3, 4); Social Committee (3, 4); Secretary Junior Class (3); Secretary W.A.A. (3); President W.A.A. (4); Basketball Varsity; Senior Superlative.



Page Seventy-three





SENIORS

MARIAN COX WOOD
VANCEBORO, N. C.

French and English

N.C.U.N.C. (1); Emerson Society (2); College Orchestra (2); Business Staff of TECOAN (3); S.G.A. (3); College Ensemble (3, 4); Vice-President of Senior Class (4); Chairman Social Committee (4); Senior Superlative.



RUTH COX WOOD
VANCEBORO, N. C.

French and English

W.C.U.N.C. (1); Emerson Society (2); College Orchestra (2, 3); Class Superlative.



SENIOR CLASS

Through four years of work and play, and life together, this college has been our home, and our classmates—our constant companions. As we approach graduation the days of the past are recalled to us: the loneliness of that first day, the perplexities of that first registration, the fear of initiation, yet with all these the pleasures of new friends, the joy of new enterprise fraught with opportunity, and a broader and richer life than we had ever known.

Senior—what a wealth of feeling and memories and expectations the word suggests: feeling, because of the love and loyalty our class bears toward our school; memories, when we think of the pleasant and now all-too-short years we have spent here; and expectations, because we realize that now we are graduating into a new life. All that this new life holds for us will be made richer, fuller, and more significant because of what we are carrying into it from this institution. Through the coming years the one ideal that has become the motto of this school can guide us in attaining the truest and most satisfying success, a success that can be ours regardless of the trend our lives may take, if we keep the ideal of service ever before us.



SENIOR SUPERLATIVES



HELEN WILSON	<i>Most Athletic</i>
CAMILLE TURNER	<i>Most Attractive</i>
DELLA G. WILSON	<i>Most Stylish</i>
MARIAN WOOD	<i>Most Versatile</i>
VIOLA SMITH	<i>Most Friendly</i>
FRANCES CURRIN	<i>Most Beautiful</i>

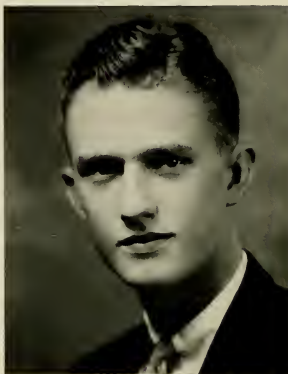


SENIOR SUPERLATIVES



ELIZABETH DIXON JOHNSON	<i>Most Popular</i>
CALLIE CHARLTON	<i>Wittiest</i>
GEORGE WILLARD	<i>Most Dependable</i>
BELLE KEARNEY	<i>Most Capable</i>
FRANCES BARNES	<i>Most Intellectual</i>
RUTH WOOD	<i>Most Individual</i>





In Memoriam

ALLAN WILSON MOORE

OCTOBER 6, 1915

JUNE 7, 1936

*"A sweeter and a lovelier gentleman,
Fram'd in the prodigality of nature,
Young, valient, wise, and,
No doubt right royal;
This spacious world cannot again offer."*

—SHAKESPEARE.



ELIZABETH COPELAND
President



JUNIOR CLASS

Two hundred and fifty strong we entered in the fall of '36 with greater zeal and determination to make this our most successful year. Junior-Freshman, the first step toward the goal, came up to every expectation. Junior-Senior, the high spot of the year, a "Prom"—the first given in the history of the college—the class holding true to its nature: Be different, yet excel.



JOSEPH BRAXTON
Vice-President



MILDRED SATTERWHITE
Secretary



CORABOB SMITH
Treasurer

JUNIORS

ESTELLE ADAMS
COLERAIN, N. C.

LALLAH ADLER
MOREHEAD CITY, N. C.

KATHRYN ALBRITTON
SNOW HILL, N. C.

CHRISTINE ALFORD
RALEIGH, N. C.

JARVIS ALLEN
GREENVILLE, N. C.

DIXIE ALLRED
HAMPTONVILLE, N. C.

BERNICE ALSTON
WINDSOR, N. C.

JOSEPHINE AMBROSE
BELHAVEN, N. C.

LILLIAN AMBROSE
BELHAVEN, N. C.

JOSEPHINE ANDERSON
MURFREESBORO, N. C.



JUNIORS



SALLY ANDERSON
HALIFAX, N. C.



MARTHA COOPER ARTHUR
WHALEYVILLE, VIRGINIA



MARGUERITE ASBELL
EDENTON, N. C.



ETHELYNDE BALLANCE
LAKE LANDING, N. C.



HELEN BARNHILL
PARMELE, N. C.



ROY BARROW
LA GRANGE, N. C.



BIRTRUM BATEMAN
AYDEN, N. C.



MILDRED BECTON
KINSTON, N. C.



BERNICE E. BELCHE
RICH SQUARE, N. C.



MARY LILY BEST
PINETOPS, N. C.



JUNIORS

RACHEL BISSETTE
BAILEY, N. C.

WILSON BLALOCK
JONESBORO, N. C.

KATY ETTA BLAND
WHITAKERS, N. C.

LILLIAN MARCELLE BLANTON
KINGS MOUNTAIN, N. C.

CELESTA BOYETTE
KENLY, N. C.

JOSEPH C. BRAXTON
LA GRANGE, N. C.

FANNIE BREWER
CLARKSVILLE, TENNESSEE

IDA MAIE BRITT
PARKTON, N. C.

LOUISE BRITT
COLERAIN, N. C.

JEAN BROWN
GREENVILLE, N. C.



JUNIORS

WORTH CHAUNCEY CALFEE
BELHAVEN, N. C.

ELAINE CALL
MOCKSVILLE, N. C.

BETTIE CASTELLOE
WINDSOR, N. C.

LOUISE CATES
TIMBERLAKE, N. C.

FRANCES CHAMBLEE
SPRING HOPE, N. C.

CATHERINE CHEEK
GRAHAM, N. C.

MILDRED CLAY
WHITAKERS, N. C.

MARY ANNA CLIFTON
LOUISBURG, N. C.

SUSIE GRAY COBB
FREMONT, N. C.

HADILENE COLEY
STANTONSBURG, N. C.



JUNIORS

JEAN A. COOPER
RALEIGH, N. C.

XYLDA COOPER
WALLACE, N. C.

ELIZABETH COPELAND
AHOSKIE, N. C.

CARRIE COTTEN
OXFORD, N. C.

MARY B. COX
STANTONSBURG, N. C.

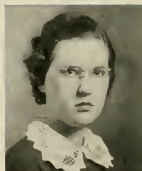
MAGGIE CRUMPLER
FAYETTEVILLE, N. C.

JIMMIE CULLENS
ROCKY MOUNT, N. C.

AGNES CULLIPHER
MERRY HILL, N. C.

DORA FREDERICK CURTIS
WILSON, N. C.

ALINE DAILEY
BUIES CREEK, N. C.



JUNIORS

EFFIE MOORE DARDEN
JACKSONVILLE, N. C.

EMMA DAUGHTRY
RICH SQUARE, N. C.

ALLEAN DAVIS
FREMONT, N. C.

LOUISE DAVIS
MILWAUKEE, N. C.

MARGARET E. DAVIS
BURGAW, N. C.

TEMPLE DAVIS
WHITAKERS, N. C.

SAM DEES
GREENVILLE, N. C.

GRAY DEWAR
FUQUAY SPRINGS, N. C.

EDITH DIXON
MEBANE, N. C.

HELEN DOWNING
ELIZABETHTOWN, N. C.



JUNIORS

MADELINE EAKES
OXFORD, N. C.

EUNICE MAE EDWARDS
GOLDSBORO, N. C.

FLORIDA EDWARDS
NEWPORT, N. C.

MILDRED EDWARDS
HAMLET, N. C.

MAY JOHNSON EURE
AYDEN, N. C.

MARABLE FAISON
TURKEY, N. C.

FRANCIS FEREBEE
NEW BERN, N. C.

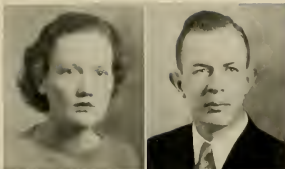
JULIA FOLEY
GREENVILLE, N. C.

GRACE FREEMAN
MOREHEAD CITY, N. C.

MARJORIE DEAN GARRIS
AYDEN, N. C.



JUNIORS



JULIA GAYLORD
GREENVILLE, N. C.

JAMES CURTIS GEDDIE
FAYETTEVILLE, N. C.



ELIZABETH GILLAM
WINDSOR, N. C.

LOUISE GOOCH
OXFORD, N. C.



CHRISTINE GRADY
FOUR OAKS, N. C.

MARIE GREGORY
ANGIER, N. C.



MARY KATHRYN GRIFFIN
WOODLAND, N. C.

LOUISE GRIGGS
WADESBORO, N. C.



MARGARET GRIGGS
MORVEN, N. C.

IULA HALL
ROSEBORO, N. C.



JUNIORS

JOSIE HALL
WALLACE, N. C.

MILDRED HAMILTON
MAGNOLIA, N. C.

LETA MAE LAMN
WILSON, N. C.

MARY HELEN HAMMOND
COMFORT, N. C.

MARGARET HARDEE
GREENVILLE, N. C.

ELEANOR R. HARDY
SNOW HILL, N. C.

APRYL JOYCE HARRELL
WILMINGTON, N. C.

MAMIE F. HAYWOOD
JACKSONVILLE, N. C.

VERDIS BETTY HAYWOOD
CANDOR, N. C.

EDNA CLAIRE HEMBY
SNOW HILL, N. C.



JUNIORS

JANIE E. HENDERSON
MAYSVILLE, N. C.

ELOISE HESTER
HURDLE MILLS, N. C.

MARION HILL
MURFREESBORO, N. C.

CLIFFIE HOBGOOD
OXFORD, N. C.

SADIE HOCUTT
ZEBULON, N. C.

JUANITA HOELL
GRIMESLAND, N. C.

HATTIE HOLLAND
ST. PAULS, N. C.

ANNIE MAE HOLLIDAY
GREENVILLE, N. C.

MARIE HOLMES
MOUNT OLIVE, N. C.

MARY HOOKS
FREMONT, N. C.



JUNIORS

JOSEPHINE HOUSE
BETHEL, N. C.

ELIZABETH HOWARD
ST. PAULS, N. C.

INEZ HUBBARD
FAYETTEVILLE, N. C.

MARGIE HUMPHREY
BEAUFORT, N. C.

ELIZABETH JAMES
BETHEL, N. C.

GERALD DEEN JAMES
BETHEL, N. C.

ANNIE LOU JEFFORDS
PIKESVILLE, N. C.

JOHN JENKINS
AYDEN, N. C.

LUCILE JOHNSON
SMITHFIELD, N. C.

M. LUCILE JOHNSON
ROSE HILL, N. C.



JUNIORS

CHARLOTTE JOHNSTON
WHITAKERS, N. C.

THELMA JONES
GREENVILLE, N. C.

ELIZABETH KEEL
ROBERSONVILLE, N. C.

BERTHA JOYNER LANG
FARMVILLE, N. C.

MARCELINE LANGSTON
FOUR OAKS, N. C.

AULINE LANIER
CHINQUAPIN, N. C.

ELIZABETH LAYDEN
ELIZABETH CITY, N. C.

BIRMA LEE
ARAPHOE, N. C.

MARJORIE LLOYD
HILLSBORO, N. C.

ZAZELLE LOUGHLIN
HENDERSON, N. C.

JUNIORS

EMMA BARKER MALLARD
TRENTON, N. C.

GLADYS MALPASS
WILMINGTON, N. C.

HANNAH MARTIN
SANFORD, N. C.

LOUISE N. MARTIN
SANFORD, N. C.

DAISY BELLE MAULTSBY
BOLIVIA, N. C.

MARY ELIZABETH MCCORMICK
PARKTON, N. C.

MARY LOIS McDONALD
FAYETTEVILLE, N. C.

MARY CARSON MCGEE
MONROE, N. C.

MARGARET MCKINNEY
ELLENBORO, N. C.

ELIZABETH MERCER
LUMBERTON, N. C.



JUNIORS



DORIS MEWBORN
SNOW HILL, N. C.

IDA WOOTEN MEWBORN
LA GRANGE, N. C.



EDITH MODLIN
ROCKY MOUNT, N. C.

OPELIA MONTAGUE
DENNISTON, VIRGINIA



EUNICE MOORE
AYDEN, N. C.

EDITH MORGAN
SPRING HOPE, N. C.



ZEBA HELEN MORGAN
CREEDMOOR, N. C.

FLORENCE MOYE
GREENVILLE, N. C.



HAZEL MOYE
WINTERVILLE, N. C.

MARGARET MULLEN
GATES, N. C.



JUNIORS

GENEVIEVE MURRELL
WILMINGTON, N. C.

LUCILE NEWTON
HENDERSON, N. C.

EUNICE ODOM
BUE, N. C.

CLARA INEZ OLIVER
PRINCETON, N. C.

ELOISE PARKER
BENSON, N. C.

FRANCES PARRISH
SMITHFIELD, N. C.

CORA LEE PATTERSON
FARMVILLE, N. C.

GRACE PELT
GOLDSBORO, N. C.

MARY LEE PENNY
GARNER, N. C.

EDNA EARLE PERRY
LOUISBURG, N. C.



JUNIORS



ERNESTINE PERRY
LOUISBURG, N. C.

KATHLEEN PERRY
HERTFORD, N. C.



EMILY PERSON
LOUISBURG, N. C.

LUCY PETERSON
PARKERSBURG, N. C.



MARY PHILLIPS
JONESBORO, N. C.

PAULINE POWELL
RUFFIN, N. C.



DELILAH PREVATT
WHITEVILLE, N. C.

SARA MORRIS PROCTOR
WASHINGTON, N. C.



MARGARET L. PRUETTE
ELLENBORO, N. C.

MARIE PUCKETT
HENDERSON, N. C.



JUNIORS

ALICE REAVES
LOUISBURG, N. C.

SARAH WHITE RHYNE
BESSEMER CITY, N. C.

LESTER RIDENHOUR
COOLEEMEE, N. C.

BLANCHE ROBERTSON
KNIGHTDALE, N. C.

JANIE MAE ROBINSON
MONROE, N. C.

MARGUERITE ROGERSON
GREENVILLE, N. C.

EDNA ROUSE
KINSTON, N. C.

CHRISTINE ROWE
PRINCETON, N. C.

FAYE ROWELL
GARYSBURG, N. C.

LOUISE SANDERSON
MAGNOLIA, N. C.



JUNIORS



CHARLOTTE SASSER
MOUNT OLIVE, N. C.



MILDRED SATTERWHITE
OXFORD, N. C.



CORNELIA SCOTT
MILTON, N. C.



DOROTHY SEXTON
ENFIELD, N. C.



VIRGINIA SHINDLER
RENSSELAER, INDIANA



MARY LYON SHOTWELL
STOVALL, N. C.



MARY ALICE SIMMONS
POLKTON, N. C.



ELIZABETH SINGLETARY
ELIZABETHTOWN, N. C.



BERTHA SMITH
HOPE MILLS, N. C.



CORABOB SMITH
AYDEN, N. C.



JUNIORS

FRANCES SMITH
GREENVILLE, N. C.

MARY ELIZABETH SMITH
FARMVILLE, N. C.

GRACE SPENCER
SCRANTON, N. C.

NANCY SPERLING
SHELBY, N. C.

CATHERINE SPRUILL
HENDERSON, N. C.

MARGIE STANFIELD
ROXBORO, N. C.

DOROTHY STEADMAN
PINETOPS, N. C.

MARY ELIZABETH STOKES
GREENVILLE, N. C.

THORNTON STOVALL
STOVALL, N. C.

MARY BLANCHE STOX
GREENVILLE, N. C.



JUNIORS

MARY LOIS STURDIVANT
CLAYTON, N. C.

NELLIE SUTTON
TRENTON, N. C.

JUNE SWAIN
PINETOWN, N. C.

LOUISE TADLOCK
GREENVILLE, N. C.

GEORGIA TAYLOR
AYDEN, N. C.

MARY E. TAYLOR
CLAYTON, N. C.

MARY RACHEL TEEL
GREENVILLE, N. C.

ELIZABETH TOLSON
SWANSBORO, N. C.

CATHERINE THOMPSON
FAISON, N. C.

MARY EVELYN THOMPSON
PRINCETON, N. C.



JUNIORS

MARJORIE TOPPINGS
BELHAVEN, N. C.

NETA LEE TOWNSEND
FARMVILLE, N. C.

GERALDINE TYSON
ST. PAULS, N. C.

THOMAS UPTON
BELCROSS, N. C.

ROSAMOND VAN DYKE
GREENVILLE, N. C.

KATY IRIS VINSON
ROSEBORO, N. C.

LUCILE WALLER
KINSTON, N. C.

LOUISE WARREN
COLEMAN FALLS, VIRGINIA

REBECCA WATSON
JONESBORO, N. C.

NANNIE WHELESS
LOUISBURG, N. C.



JUNIORS

MARY JEANNETTE WHITE
MAXTON, N. C.

W. K. WHITE
ERNUL, N. C.

ELOISE WHITEHURST
ELIZABETH CITY, N. C.

CLARA WILLIAMS
GREENVILLE, N. C.

SUDIE B. WILLIAMSON
CERRO GORDO, N. C.

GRACE LOU WILLIAMSON
CHADBURN, N. C.

ANNIE PEARL WILSON
SHELBY, N. C.

MILDRED WILSON
WARRENTON, N. C.

RUTH WISE
JACKSON, N. C.

FRANCES WOODARD
KENLY, N. C.



JUNIORS

SUSIE WOODRUFF
WHITAKERS, N. C.

CHARLES WOOTEN
GREENVILLE, N. C.

FRANK WOOTEN, JR.
GREENVILLE, N. C.

MABEL WORLEY
CERRO GORDO, N. C.

MARIE WORTHINGTON
AYDEN, N. C.

ROWANN YEARGAN
GARNER, N. C.

MARTHA YELVERTON
FREMONT, N. C.

ETHEL YOUNG
ROSE HILL, N. C.

MARTHA LOIS YOUNGBLOOD
GREENVILLE, N. C.





MARJORIE WATSON
President



SOPHOMORE CLASS

Thus far the members of the Sophomore Class have sailed together successfully through two years of their college course. As the voyage continues, the waters become deeper, the course becomes more interesting, and each member becomes more efficient in doing his part to help the ship baffle the waves of life.



CHRISTINE TEW
Vice-President



LILLIAN PARRISH
Secretary



EMILY BRENDLE
Treasurer

SOPHOMORES

VIOLA ALPHIN

HOWARD AMAN

DORIS ARMSTRONG

MARGUERITTE AVERETTE

ADRIAN AYERS

CELESTA BALLANCE

HAZEL BARNES

MADELINE BARNES

EDITH BARRETT

LUCILE BASS



SOPHOMORES

HILDA GRAY BATTEN

RUTH VIVIAN BATTEN

LUCILE BEAMAN

RUTH BELCHE

LUDELL BELLFLOWER

ELLEN DOUGLAS BOONE

MILDRED BOYCE

DOROTHY BRAGG

EMILY BRENDLE

LORRAINE BRIDGERS



SOPHOMORES

HELEN BRINKLEY

HATTIE LAURA BRITT

NELL W. BULLOCK

ETHEL LEE BYRD

MADELINE BYRUM

ELIZABETH CARRICO

ELIZABETH CASTEEN

VANCE CHADWICK

ELIZABETH CHAMBERS

MARY CRAVEN



SOPHOMORES

DOLLIE CRAWFORD

RUTH CREEKMORE

LOUISE DAUGHTRY

MARIE DAWSON

GENEVIEVE EAKES

FLORINE EDWARDS

LOUISE ELAM

MARIE ELDRIDGE

LENA MAE ETHERIDGE

CAROLINE EVANS



SOPHOMORES

SUSAN EVANS

ANNIE B. FARRIOR

MARY ALICE FELTON

MARY BELLE FLEMING

ANN FISLER

HELEN FOLEY

MARY ALICE FRANKLIN

MARY BELLE FULCHER

GLADYS GASKINS

MARTHA JANE GATES



SOPHOMORES

EMMA GLADYS GRAY

HERBERT HADLEY

NANCY HAISLIP

JOYCE BRATTAIN HARRELL

IRIS WILLARD HARRELL

JENNIE HARRIS

OPAL CLAIRE HARRIS

MARIE HART

JOSEPH HATEM

EMILY HAWES

Page One Hundred Nine



SOPHOMORES

HULDAH HESTER

MARY LOUISE HESTER



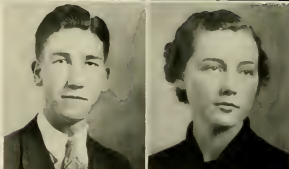
PETE A. HILL

VIRGINIA HILL



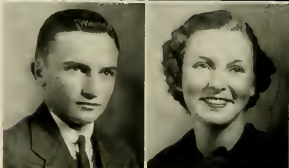
FODIE HODGES

MABRY HODGES



D. R. HOUSE

BERLINE HOWARD



LEXIE HOWARD

SELLASTINE HUGHES



SOPHOMORES

MARGARET GERTRUDE JENKINS

MARGARET I. JENKINS

PAULINE JOHNSON

RUBY MAE JONES

LOU NICKLES JOYNER

BERTHA PEARL LAMN

DOROTHY LASSITER

RENNIE LASSITER

AGNES L. LEE

HELEN LEE

Page One Hundred Eleven



SOPHOMORES

MARY EURE LILLEY

RUTH LOWERY

ELLA BONNER MANN

LOUISE T. MARTIN

RUTH MASSEY

MILDRED McDONALD

HELEN MCGINNIS

ANNA O. MOORE

JANE MOORE

MINNIE MORTON



SOPHOMORES

RACHEL NEAL

BERTHA MAE NEWSOM

IVA PEARL NICHOLSON

REBECCA NICHOLSON

HAMPTON NOE

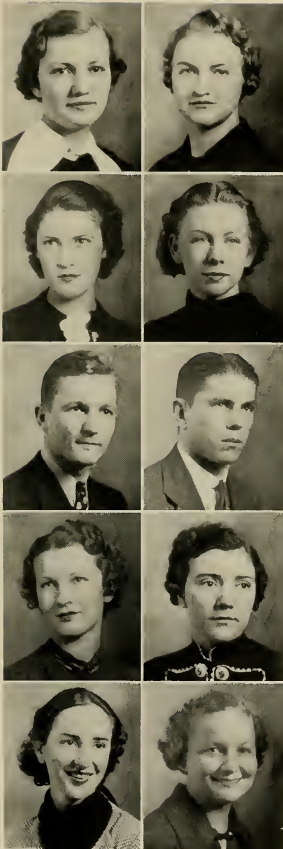
NORWOOD NORTHCUTT

STACIE B. ORR

MARGARET GUY OVERMAN

NANCY PAGE

LILLIAN PARRISH



SOPHOMORES

INA MAE PEARCE

NELL PERRY

LILLIAN POWELL

C. RAY PRUETTE

MARGARET RATLIFFE

ELIZABETH RESPESS

NELL WEEKS RIDDICK

VIVIA RIVES

IBERIA ROACH

MARENA ROBINSON



SOPHOMORES

LILY B. ROUSE

VERA DARE ROUSE

MARY LOUISE SAUNDERS

EOLINE SAWYER

STANLEY SCARBOROUGH

UNA SHAW

EDNA GRACE SMITH

MARY THOMAS SMITH

SUE WILLIAMS SPEED

LOUISE SPEIGHT

Page One Hundred Fifteen



SOPHOMORES

MABLE SPRUILL

JOSEPHINE STEWART

MAUDE STRICKLAND

GEORGIA JAMES SUGG

PAULINE SUGGS

EMILY GREENE TAYLOR

WILLIAM TAYLOR

ANNA BELLE TEEL

CHRISTINE TEW

CATHERINE H. THOMPSON





SOPHOMORES

MYRTLE THOMPSON

RUTH HINES THOMPSON



DOROTHY TILLMAN

MARGARET TREXLER



MARJORIE TRIPP

DORIS TUCKER



RUTH HAYES TURNAGE

IRENE UZZELL



JULIA VAN LANDINGHAM

MARGUERITE VAUSE



SOPHOMORES

MARJORIE WATSON

FRANCES WEEKS

BLANCHE RAE WELDON

BEULAH WHITE

WILLIAM B. WHITEHURST

INEZ WHITMAN

ELIZABETH WILDER

HERBERT WILKERSON

JOE WILLIAMS

DOLLIE WILLIAMSON



SOPHOMORES

EMMIE COBB WILSON



MARGARET WILSON

MILDRED WILSON



RUBY WINSTEAD

ROSA WOMACK



JOHN WOMBLE

DOROTHY LEE WOODARD



GORDEN GLENN WRIGHT





CLIFTON BRITTON
President



FRESHMAN CLASS

1937 Orientation week greeted four hundred freshmen. The entertainments from upperclassmen during this week were very successful, and helped us cross the first milestone of our four years of college life. The Freshman-Junior dance, our most important event, had the best of results. The class wishes to thank all of those who have helped make this year a pleasant one.



JENNIE MAE BRINKLEY
Vice-President



MARION REED
Secretary



ANNA LEE WOOD
Treasurer



FRESHMEN

EVELYN AIKEN
 FRANCES ALLEN
 J. F. ALLEN
 MARGARET ALLEN
 ALICE ALLGOOD
 PETTIE ANDREWS
 VILEIGH AUSTIN
 LARRY AVERETTE
 WILLIAM BAILEY
 EVELYN BAKER
 MARIE BAYSDEN
 ANN LAURIE BEALE
 HELEN BEARD
 TOMPY BENTON
 NORMAN BEST
 ELMER LEE BLAND
 BETTIE BLANCHARD
 DORIS ANNE BLANCHARD
 RACHEL BLANCHARD
 ANNIE HART BOONE
 LOUISE BOONE
 ANNIE RUTH BOYETTE
 VIRGINIA LEE BOYETTE

MAMIE LEE BOYDE
 HARRIET BRADSHAW
 ALICE BRAGG
 JENNIE MAE BRINKLEY
 ALBERTINA BRINSON
 GILBERT BRITT
 JESSIE BRITT
 MARGUERITTE BRITT
 CLIFTON BRITTON
 MAXIE BROADWELL
 ESTELLE BRODA
 ELIZABETH BROOKS
 MARY ELIZABETH BROWN
 SARAH EDITH BROWN
 SYBIL BROWN
 VIRGINIA BRYAN
 JESSIE MAE BRYANT
 SALLIE WILSON BUNTING
 PENNIE LOLA BURKETT
 VIRGINIA BURKETT
 LUCY ANNE BARROW
 MILDRED BURKE
 MARY LOU BUTNER

MABEL P. CAPPS
 CHRISTINE CAROON
 URSOLA CARR
 JULIA CARSON
 EVA CARTER
 LILA JANE CHANDLER
 LUCILLE CHERRY
 CAMILLE CLARK
 EVELYN CLARK
 MILDRED CLIFTON
 KATHERINE COLLIE
 JANE COPELAND
 ANNIE JEAN COREY
 GRAHAM COWARD
 VIRGINIA CRAWFORD
 EDNA CRAWLEY
 BARBARA CREECH
 ERNESTINE CREECH
 RUTH CREECH
 EUNICE CULLIPHER
 IDA PEARL CURRIN
 MARGUERITTE CURRIN
 ALICE LEE DANIEL





FRESHMEN

JOSEPHINE DANIEL
 ANITA DAUGHTRIDGE
 AGNES DALE DAVENPORT
 DAPHNE DAVIS
 PAGE DAVIS
 WINNE RUTH DAVIS
 HARVEY DEAL
 ANNIE REE DEAN
 BEATRICE DEAN
 BILLIE DENNING
 ETHEL DICKENS
 CATHERINE DENSON
 DORIS DOBSON
 DOROTHY DUNN
 MILLIE GRAY DUPREE
 ADELINE EARP
 LUCILLE EDGE
 ATHA LEE EDMUNDSON
 MABLE EDWARDS
 MILDRED EDWARDS
 MARY ELIZABETH ELBOTE
 JUANITA ETHERIDGE
 MARY ALICE FELTON

MYRTLE IRENE FINCH
 ANNE FISHER
 KATHERYNE FLEETWOOD
 LILLIAN MAE FOREST
 RUTH FRAZELLE
 ETHEL FULGHM
 ELIZABETH FUSSELL
 MILDRED GAMMON
 ELIZABETH GASKINS
 ETHEL GASKINS
 MARGUERITTE GUARD
 JAMES GEDDIE
 HELEN GRAY GILLIAM
 GERALDINE GLOVER
 DORA MAE GORMAN
 EDITH MAE GRANT
 REBECCA GRANT
 DOROTHY LOUISE GREENE
 MILDRED GUPTON
 ELEANOR GURGANUS
 META VIRGINIA HAMMOND
 ANNIE REE HARDEE
 LEE WARD HARDY

ARTRIVES HARRIS
 CHARLES D. HARRIS
 CHRISTENE HARRIS
 GERALDINE HARRIS
 OPAL CLAIRE HARRIS
 RUTH HAWKES
 JANET HAYES
 VENETHA HEARNE
 BETTY SUE HEATH
 MARJORIE HILL HEATH
 FAY HELMS
 FRANCES HENDERSON
 LILLIAN HICKS
 ROSALINE HIGH
 HAZEL HILL
 JOYCE ELAINE HILL
 INDIA HILL
 WILLARD HILL
 MAUDE HENSON
 SYBIL HOFFMAN
 MARY ELIZABETH HOGGARD
 DOROTHY HOLLAR
 MARGARET HOLLIDAY



FRESHMEN

WESLEY HOLLAND
 LUCY HUDGINS
 CASSIE HUDSON
 MARY DELL HURST
 MARGUERITTE HUTCHINSON
 MARGARET HYMAN
 GLADYS IPOCK
 JOSEPHINE JACKSON
 MARGARET JACKSON
 MATTIE LEE JACKSON
 MARGARET JARVIS
 EVELYN JERNIGAN
 LOUISE JOHNSON
 MARY PARKER JOHNSON
 MYRTIS JOHNSON
 SUELVIE JOHNSON
 THADYS JOHNSON
 ANNIE WYNNFRED JONES
 HELEN JONES
 JAMES JONES
 CORA E. JOSLYN
 JAMES JOYNER
 LILLIAN KNIGHT
 CAROLYN LAMBE
 FRANCES LAMBE
 EVELYN LATHAM
 SHIRLEY LATHAM
 SUE LAWRENCE
 BELMA LEE
 NELL LEE
 LUCY LEONARD
 RAY LEWIS
 ELSIE LILLEY
 CATHERINE LOWERY
 RACHEL ANNE MCCAMBLE
 CATHERINE MCCLEESE
 CATHERINE MCDANIEL
 MARY FRANCES MCDANIEL
 BONNIE ELOISE MCGEE
 LOUISE MCGOWAN
 MARY LOUISE MCGOUGAN
 PATSY MCINTYRE
 ANNIE BRANCHE McLAWHORN
 TUCKER McLAWHORN
 MALCOLM MCPHAW
 EVA MCMILLAN
 MARY MCNEILLE
 MARY MANNING
 EDNA MARSHBORNE
 ARCHIE MARTIN
 BILLIE MARTIN
 HILDA MARTIN
 KELLY MARTIN
 MARIETTA MARTIN
 VIRGINIA MARTIN
 MARY ELLEN MATHEWS
 MARY RIVERS MAY
 GERALDINE MAYO
 CHARLES MAYO
 SARAH ANNIE MAXWELL
 ANNIE MEADOWS

THOMAS MEESK
 IVA MESSICH
 GLADYS MILLER
 NELL MITCHELL
 BLANCHE MOORE
 EDNA MOORE
 ELIZABETH MOORE
 LILLIE BELL MOORE
 NANCY L. MOORE
 LA RUE MOORING
 REBA MURRY
 BETTIE NEAL
 PAULINE NELSON
 PRUE NEWBY
 FRANCES NEWSOME
 JOHN NOE
 LAURA OATES
 PAULINE OUTLAW
 MABLE OWENS
 ALTON PAYNE
 ETHEL PAGETTE
 ANNIE LAURIE PARKER
 ISABELLE PARKER
 EVELYN PENDERGRASS
 MOZELLE PERNELL
 MABEL LOUIS PERRY
 MIRIAM P. PERRY
 MAUDE EVANS PHELPS
 HAZEL IRENE PHILLIPS
 RUTH PHILLIPS
 LAURIE E. PITTMAN
 ROBERT PITTMAN, JR.
 ISABELLE POLLARD
 JULIA POOLE
 ARTIC POWELLE
 MADELINE POWELLE
 LILLIAN PRICE
 BILL PRATT
 RUTH PRICHARD
 ANNA BELLE PRIVATTE
 MARY RASOR
 MARION REED
 GLADYS RICHARDSON
 ELIZABETH RIVERS
 IDA ROBERTS
 WILLIAM ROBUCK
 VIRGINIA RODGERS
 LUCILLE ROGERSON
 ERNESTINE ROLLINS
 VINCENT ROMANS
 AUDREY SAULTER
 HAZEL SATTERWHITE
 EMMETTE SAWYER
 MIRIAM SAWYER
 HAROLD SCOTT
 WILLIAM SHELTON
 AUSTIN SMITH
 CORNELIA SMITH
 MARY THOMAS SMITH
 MARIE SMITH

JAMES SMITH
 VIRGINIA SMITH
 STELLA RAY SPENCER
 JULIA SPENCER
 NELLIE BLANCHE STANFORD
 ETHEL STEPHENSON
 HILDA PEARLE STEPHENSON
 EVELYN STEWART
 KATHLEEN STRICKLAND
 MARY BLANCHE STRICKLAND
 JOSEPHINE SUMRELL
 ROSALIE SUTTON
 WYLLIE SUTTON
 HARDING SUGG
 KATHLEEN SYKES
 ANNA LOUISE TAYLOR
 ELIZABETH TAYLOR
 MILDRED JEWELLE TAYLOR
 RUTH TAYLOR
 SMYTHIE TAYLOR
 AUBREY TAYLOR
 WILLIAM TAYLOR
 IRVING THARRINGTON
 DWIGHT THOMAS
 BLANCHE THREEWITTS
 MARIE TRIPP
 ROSALIE TRIPP
 RALEIGH TUCKER
 EDNA M. TYLER
 MARIAN TYSON
 JAMES UZZELLE
 DORIS VAUGHN
 CLAUDE VENTERS
 ROCKFELLOW VENTERS
 SARAH WAYDE
 EDITH WARD
 MAE ELLEN WARREN
 LA RUE WEATHERS
 MARJORIE WEATHERS
 MARIE WELLS
 BARBARA ANNE WEST
 MILDRED WESTBROOK
 NANNIE E. WORTHINGTON
 CAROLYN WHITE
 JEAN WHITE
 KITTIE WHITE
 INEZ WHITMAN
 FRANCES WILSON
 HAZEL WILLIAMSON
 LEWIS WILKERSON
 HELEN WILSON
 MILDRED WILSON
 MYRTLE WILSON
 ERNEST WILLARD
 GLADYS MAE WENSHOP
 JOHN WILLIAMS
 AGNES WOOD
 ANNA LEE WOOD
 VIRGINIA WOOD
 WILLARD WOOTEN
 MARGARET WYKOFF



IRENE WILLIAMSON
President



SENIOR NORMAL

The last of the D classes goes out proudly upholding the record of its twenty-seven predecessors.

"Tweedles", the dramatic triumph, the party with "D's" as honorees, and the sponsoring of the formal dinner were the chief social events. The "Sing and Dance" was for gathering dimes for a memorial.



RUTH TAYLOR
Vice-President



MARY BELLE EDMONDSON
Secretary



ELIZABETH POWELL
Treasurer

SENIOR NORMAL

RUTH BLANCHE ADAMS
FOUR OAKS, N. C.

Primary Education

ELIZABETH ADLEY
DUNN, N. C.

Primary Education

S.G.A. (1).

FRANCES ARRINGTON
ROCKY MOUNT, N. C.

Primary Education

ALLIENE BASS
NASHVILLE, N. C.

Primary Education

Poe Society (1, 2).

IDALENE BASS
SPRING HOPE, N. C.

Primary Education

Poe Society (1, 2).

IRENE BAUM
KITTY HAWK, N. C.

Primary Education

MARTHA LEEN BEAMAN
FOUNTAIN, N. C.

Grammar Grade

Y.W.C.A. (1); W.A.A. (1, 2); Emerson
Society (1, 2).

LOUISE BECK
WADESBORO, N. C.

Grammar Grade

LOUISE BLANTON
SHELBY, N. C.

Primary Education

Varsity Basketball (1, 2); W.A.A. (1,
2), Vice-President (2); Y.W.C.A. (1, 2).

LUCY WHITFIELD BRITT
MOUNT OLIVE, N. C.

Grammar Grade

Poe Society (1).



SENIOR NORMAL



DORIS BURNEY
LUMBERTON, N. C.

Grammar Grade

Poe Society (1, 2); Glee Club (2); Rep-
ortorial Staff of *Teco Echo* (2).



ELEANOR BURNEY
AYDEN, N. C.

Primary Education

Lanier Society (1, 2).

ALMA CARRAWAY
SNOW HILL, N. C.

Grammar Grade

W.A.A. (1, 2); Lanier Society (1); Bas-
ketball (1, 2).



JULIA CARSON
WASHINGTON, N. C.

Grammar Grade

GLADYS CASHWELL
INGOLD, N. C.

Primary Education



MARTHA COBB
FARMVILLE, N. C.

Primary Education

Pitt County Club (1); Emerson Society
(1, 2).

PAULINE COLEY
STANTONSBURG, N. C.

Grammar Grade

Poe Society (1, 2).



RUBY CONE
LOUISBURG, N. C.

Primary Education

Campbell College (1); Y.W.C.A. (2).

LUCILE COX
RUFFIN, N. C.

Primary Education

A.C.E. (2); Budget Committee (2).

ELIZABETH CRAWLEY
BELCROSS, N. C.

Grammar Grade

Lanier Society (1, 2).



SENIOR NORMAL

JANET GRIFFIN
WOOLAND, N. C.

Primary Education

MABEL GRAY CRISP
AYDEN, N. C.

Primary Education

ALICE GRAY DAUGHTRY
CLINTON, N. C.

Grammar Grade

Poe Society (1, 2).

GRACE DAWSON
KINSTON, N. C.

Grammar Education

Poe Society (1, 2); S.G.A. (2).

GENEVA DENNING
MOUNT OLIVE, N. C.

Grammar Grade

Y.W.C.A. (1, 2); TECOAN Representative
(2); Poe Society (2).

SARA DICKENS
HALIFAX, N. C.

Primary Education

MARY BELLE EDMONDSON
WILLIAMSTON, N. C.

Primary Education

Poe Society (1, 2); Marshal (2); Sec-
retary of Class (2).

MADelyn EURE
RODUCCO, N. C.

Primary Education

DORIS EVERETTE
ROBERSONVILLE, N. C.

Grammar Grade

IDA FLETCHER
WEEKSVILLE, N. C.

Grammar Grade

Lanier Society (1, 2); Y.W.C.A. (2).



SENIOR NORMAL

LUCY FOUTS
THOMASVILLE, N. C.

Primary Education
Y.W.C.A. (1, 2); Poe Society (1, 2).

LILLIE MAE FULLER
HESTER, N. C.

Primary Education
Granville County Club (1, 2); Y.W.C.A.
(1, 2).

MYRTIE ETTA GAYE
ZEBULON, N. C.
Primary Education

HETTY GREEN
ROCKY MOUNT, N. C.
Primary Education

MARTHA HAMILTON
MONROE, N. C.

Primary Education
Glee Club (1, 2); Y.W.C.A. (1, 2); Em-
erson Society (1, 2); S.G.A. (1); Asso-
ciate Editor of *Teco Echo* (2); A.C.E. (2).

HELEN E. HARDING
CHOCOWINITY, N. C.

Grammar Grade
Emerson Society (1, 2); Secretary of
Class (1); *Teco Echo* Staff (2).

CLAUDIA HARPER
AYDEN, N. C.
Primary Education
Poe Society (1).

ELEANOR HARRINGTON
GREENVILLE, N. C.
Primary Education

PATTY HARTIS
WILMINGTON, N. C.
Grammar Grade
Emerson Society (1, 2).

BETTISUE HEATH
MAGNOLIA, N. C.
Primary Education

SENIOR NORMAL

EMMA HEATH
GRIMESLAND, N. C.
Grammar Grade

LOUISE HEMBY
SNOW HILL, N. C.
Grammar Grade

MARILYN HENDERSON
MAYSVILLE, N. C.
Primary Education

Y.W.C.A. (1, 2); Junior Y.W.C.A. Cabinet (1); Senior Y.W.C.A. Cabinet (2); Emerson Society (1, 2).

ANNIE LAURIE HODGES
WASHINGTON, N. C.
Grammar Grade
Emerson Society (1, 2).

DORIS HOLLOWELL
PRINCETON, N. C.
Y.W.C.A. (1, 2); S.G.A. (2).

MILDRED A. HOLLOWELL
PRINCETON, N. C.
Primary Education
Poe Society (1, 2); Y.W.C.A. (1); Choir (1, 2); B.S.U. Council (2); Glee Club (2); Junior Y.W.C.A. Cabinet (1); W.A.A. (2).

MILDRED HOWELL
KENLY, N. C.
Primary Education

MARGARET HUMPHREY
ST. PAULS, N. C.
Grammar Grade

MATTIE IPOCK
COVE CITY, N. C.
Grammar Grade
Y.W.C.A. (1, 2); Poe Society (1, 2).

ELEANOR JACKSON
AYDEN, N. C.
Primary Education





SENIOR NORMAL

WILLIE B. JACKSON
GRIFTON, N. C.
Primary Education

ELOISE JERNIGAN
DUNN, N. C.
Grammar Grade

ANNA CHRISTINE JOHNSON
FOUR OAKS, N. C.
Primary Education

MARY DOMER JOHNSON
WHITAKERS, N. C.
Grammar Grade

MARY SUE JOHNSON
MEADVILLE, PENNA.
Grammar Grade
Emerson Society (1, 2).

GLADYS LORENE KING
REIDSVILLE, N. C.
Grammar Grade
Lanier Society (1); W.A.A. (1).

EDNA EARLE KIRBY
PRINCETON, N. C.
Grammar Grade

ZARA GILBERT KOONCE
COMFORT, N. C.
Grammar Grade

ESTHER LEAKE
RICH SQUARE, N. C.
Grammar Grade
Emerson Society (1, 2); Glee Club (2).

LALON LEE
DUNN, N. C.
Grammar Grade



SENIOR NORMAL

MAIDA LEE
COATS, N. C.

Primary Education

RUBY LEE
SMITHFIELD, N. C.

Primary Education
Poe Society (1, 2).

RUTH LEGGETT
ROCKY MOUNT, N. C.

Grammar Grade

LUCILLE LEWIS
WILMINGTON, N. C.

Grammar Grade

J. V. MARSH
FAYETTEVILLE, N. C.

Grammar Grade

BLANCHE MASSEY
RUFFIN, N. C.

Grammar Grade

MARGARET MAYNARD
WADE, N. C.

Primary Education

JANET MAYO
FREMONT, N. C.

Grammar Grade

RUTH MAYO
LUCAMA, N. C.

Grammar Grade

Y.W.C.A. (2); Lanier Society (1, 2).

RACHEL ANNE MCCAMPBELL
ARCHDALE, N. C.

Grammar Grade

Y.W.C.A. (1, 2); Emerson Society (1, 2).





SENIOR NORMAL

EVELYN MIDGETT
RODANTHE, N. C.
Grammar Grade

GLADYS MILLER
ALLIANCE, N. C.
Grammar Grade

Varsity Basketball (1, 2); W.A.A. (1, 2); Emerson Society (1, 2).

MARTHA MORRISON
CLIO, N. C.
Grammar Grade

ELLEN MOORE
OXFORD, N. C.
Grammar Grade

Lanier Society (1, 2).

ANNIE LEE MOZINGO

NANCY OLIVE
HAMLET, N. C.
Grammar Grade

MAVIS PARKER
BELVOIR, N. C.
Grammar Grade

W.A.A. (1, 2); Emerson Society (1);
Basketball (1); Varsity (1, 2).

RUTH PEARCE
COLERAINE, N. C.
Primary Education

Poe Society (1).

MARY ALICE PERNELL
LOUISBURG, N. C.
Grammar Grade

DORIS PHELPS
COLERAINE, N. C.
Primary Education

Poe Society (1).



SENIOR NORMAL

MELBA LOUISE PHELPS

LA GRANGE, N. C.

Grammar Grade

Y.W.C.A. (1).

SUSIE PLEASANT

ANGIER, N. C.

Grammar Grade

Y.W.C.A. (1); W.A.A. (1, 2); Poe Society (1, 2); Varsity (1); Proctor (2).

ELIZABETH POWELL

PRINCETON, N. C.

Grammar Grade

W.A.A. (1); Treasurer of Senior Normal Class (2).

JUANITA RHODES

ZEBULON, N. C.

Grammar Grade

Emerson Society (1, 2).

NYDA ROBINSON

CLINTON, N. C.

Primary Education

Lanier Society (2); C.E.A. (2).

EUGENIA ROOK

ROANOKE RAPIDS, N. C.

Primary Education

ALMA E. RUFFIN

BAILEY, N. C.

Grammar Grade

Lanier Society (1).

LOUISE SHACKELFORD

WALSTONBURG, N. C.

Grammar Grade

W.A.A. (1, 2); Emerson Society (1); Basketball (1, 2); Varsity (1, 2); Secretary of W.A.A. (2).

BERGENETTER SHEPARD

WILMINGTON, N. C.

Grammar Grade

MARY SHIRLEY

WALSTONBURG, N. C.

Grammar Grade

W.A.A. (1, 2); Emerson Society (1); Basketball (1, 2).



SENIOR NORMAL

FRANCES SIMMONS
GREENVILLE, N. C.
Grammar Grade

EUNICE MAE SMITH
SEVEN SPRINGS, N. C.
Grammar Grade
Poe Society (1, 2).

SARAH D. STEPHENSON
ANGIER, N. C.
Grammar Grade
Poe Society (1, 2); Y.W.C.A. (1, 2);
Junior Y.W.C.A. Cabinet (1).

ELLEN STEWART
BROADWAY, N. C.
Grammar Grade
Lanier Society (1, 2); Y.W.C.A. (2).

ELLA LEE STOCKS
HOOKERTON, N. C.
Primary Education

MARGUERITE STOREY
WOODLAND, N. C.
Primary Education

MATTIE BELLE STOVAL
VIRGINIA, VIRGINIA
Grammar Grade
Granville County Club.

RUBY STICKLAND
ORLANDO, FLORIDA
Primary Education
Poe Society (1, 2).

MARY ELIZABETH STYRON
HATTERAS, N. C.
Primary Education

DORIS SUTTON
MOUNT OLIVE, N. C.
Primary Education
Poe Society (1).



SENIOR NORMAL

HATTIE SWEATT
CHERRYVILLE, N. C.
Grammar Grade

DOROTHY TANT
SPRING HOPE, N. C.
Grammar Grade

Poe Society (1, 2).

RUTH TAYLOR
TARBORO, N. C.
Primary Education

Poe Society (1, 2); Vice-President of
Senior Normal (2).

EVELYN TUGWELL
FARMVILLE, N. C.
Primary Education

JANE VEASEY
DURHAM, N. C.
Primary Education

ELEANOR HODGES WALKER
REIDSVILLE, N. C.
Primary Education

LILLIAN WARREN
NEWTON GROVE, N. C.
Grammar Grade

MARGARET S. WATKINS
VIRGINIA, VIRGINIA
Primary Education
Y.W.C.A. (1, 2); Vice-President of
Granville County Club (2).

EUNICE MAE WATSON
LUCAMA, N. C.
Grammar Grade
Y.W.C.A. (2); Lanier Society (1, 2).

NELLIE WEBB
PINETOPS, N. C.
Grammar Grade
Emerson Society (1, 2); Secretary of
S.G.A. (summer); S.G.A. (2).



SENIOR NORMAL

MARY V. WILLIAMS
ZEBULON, N. C.
Grammar Grade

DORA WILLIAMSON
PINE HALL, N. C.
Primary Education

IRENE WILLIAMSON
CHADBURN, N. C.
Primary Education

Treasurer of Junior Normal Class (1);
Chairman of Social Committee (1); Pres-
ident of Senior Normal Class (2); Enter-
tainment Committee (2); C.E.A. (2).

EVELYN WILSON
ROSEBORO, N. C.
Primary Education

PAULINE WORTHINGTON
WINTERVILLE, N. C.
Grammar Grade





**Sponsors for Louisburg-
E. C. T. C. game**



Hang on to 'Em, Sister!



**What do you think this is?
Flag day?**



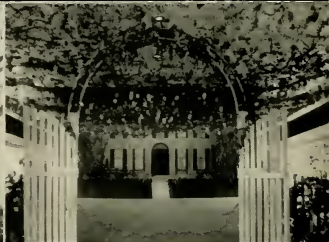
Taxie!



Stephy!



Up a tree.



Gala Junior-Senior—1936



**Going Some
place?**



Frosh barbecue gets results.



**William Tell's
Competitor!**



Carolina! Carolina!



**Row, row,
your boat—**



After lights in Wilson!



Way down South!



**What! A girl
in Ragsdale?**



**It's an old E. C. T. C.
custom.**



Well, what about it?



**Don't tell me they grow
around here!**



**Typical dormitory room
with trimmings**



Off to the P. O.



**Who's Frank with
this time?**



You tell 'um, sport!



**Embryonic
Fed Husing**



**Always a-head
somewhere.**



Flirtation Walk.



Going my way?



**Footloose and Fancy
Free**



Whose lucky day?



**Margie and Sammy—
Playing again.**



Mail! Male!



No wonder they had a war!



Woe is us!



What would mother say?



Puzzle—Find Beecher—



Tommy from
the Studio



Swing Mr. Charlie!



Dear Ole Alma Mater



3 Cheers



Curiosity didn't kill these
kittens.



What's he playing?



Sweet and quaint, what?



And—Lord bless
Africa—Amen.



Practice teaching—Dear
teacher.



Too bad it's not cactus!



Seeing double—Oh, it's the
Ambrosia twins—



Lib—from Ahoskie



Mildred—taking time out with nature



Meet Mr. Williams.



Miss Grogan
Miss Smith



Good Ole Schooldays



How did this happen,
camera?



What's the Editor up to
now?



What'ya Matter?
Slip?



Pupil salad—Snow's free!



Getting the most out of life
—snow



Gabbin' Gals



Varsity Minstrel—'36



Mr. Deal—
French Prof



What's she
mad about?



Dr. Frank— 1492
Columbus sailed, etc.

With the mule "hitched up", the family is off to the little wooden church—the center of the Negro life, where they will be deeply and sincerely stirred by an emotional sermon. Praising, singing, shouting, in this little church, gives a true outlet for every Negro's personality.

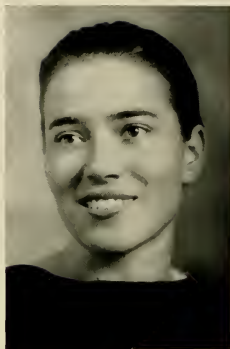
The ORGANIZATIONS



STUDENT GOVERNMENT

ELIZABETH DIXON JOHNSON

President



JOHNSON

THE WOMEN'S STUDENT GOVERNMENT ASSOCIATION

The Women's Student Government Association at East Carolina Teachers College unites the women students as no other organization does. Through unity it endeavors to help each student adjust herself to the responsibilities of good citizenship. Student government functions specifically through a council elected by the student body and by the classes. The council this year began its work in the fall by helping with freshman week. Throughout the year it has been the purpose of student government to firmly instill in each member a clearer understanding of the functions of this body and a spirit of loyalty and cooperation.

Contacts with other campuses have been made through delegates who went to the National Student Federation Congress in New York City; to the Southern Intercollegiate Association meeting in Spartanburg, South Carolina; and to the meeting of the North Carolina Federation of Students in Greensboro.

In this way student government carries on and develops.

First row: HALL, WARREN, HARRELL, WATSON, DAVIS.

Second row: HOWARD, ANDERSON, KNOWLES, WEBB, SHOTWELL.

Third row: KEARNEY, DAWSON, EDGERTON, BREWER, DAWSON.

Fourth row: HOLLOWELL, BARROW, WALLACE, BARNES, SMITH.



STUDENT GOVERNMENT

OFFICERS

THORNWELL GIBSON

President

WESLEY BANKSTON

Vice-President

C. RAY PRUETTE

Secretary



GIBSON

THE MEN'S STUDENT GOVERNMENT ASSOCIATION

The few years that boys have been coming to East Carolina Teachers College, the Men's Student Government has had much influence on their lives, as to behavior, scholarship, and morals. The purpose of the Men's Student Council is twofold. First: the Council has done quite a bit of work to further the interest of the boys on and near the campus. Second: the boys Council has tried to be a benefit to the boys in all matters, but especially in discipline problems, and in campus activities. Therefore, the members of the Men's Student Council wish the men students to know that their motive is to go forward rather than to retard their progress.

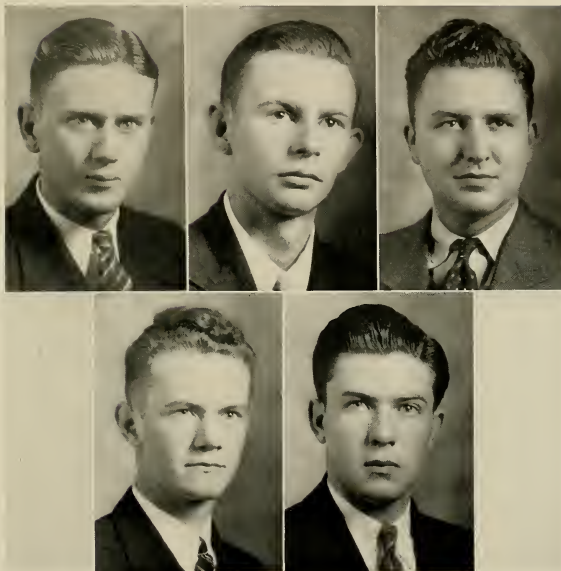
This year with Thornwell Gibson as President, the cooperation of the men has been excellent.

We feel that the Men's Association has not been in vain.



First row: WESLEY BANKSTON, C. RAY PRUETTE, JUDSON WHITE.

Second row: GEORGE WILLARD, THORNTON STOVALL.



Y. W. C. A.

OFFICERS

CATHERINE WALLACE

President

MARGARET NORMAN

Vice-President

MILDRED McDONALD

Secretary

JUANITA DAVIS

Treasurer



WALLACE

THE YOUNG WOMEN'S CHRISTIAN ASSOCIATION

The purpose of the Young Women's Christian Association, one of the outstanding organizations on the campus of East Carolina Teachers College, is to help students "live unreservedly Jesus' Law of Love in every relationship and so to know God." It is in an effort to realize this aim that the Y.W.C.A. carries on its many activities.



NORMAN



McDONALD



DAVIS



Every week-day Morning Watch is held, giving students an opportunity to begin the day with the Great Teacher. A Vesper service is planned for each Friday and Sunday evening at which time varied programs are brought to the students, including music programs; out-of-town speakers; deputation teams from Carolina, N. C. State, and Shaw University; White Gift Service; Junior Cabinet Installation; House of Comradeship Program; and Commencement Vesper Service. Prominent among the speakers this year was Miss Mary Herring of Raleigh, an applicant for the foreign mission field, who was a week-end guest.

The Y.W.C.A. has made provision for the social life by keeping the hut open for the use of students, and by giving one large social event each quarter for its members.

Of great assistance to the Y.W.C.A. in fulfilling its purpose were the advisers, Miss Lois Grigsby, Miss Emma L. Hooper, Mr. E. L. Henderson, and President Meadows.



Y.W.C.A. CABINET

First row: ELIZABETH COPELAND, ELIZABETH DIXON JOHNSON, FRANCES EDGERTON, EDNA EARLE PERRY.

Second row: MARIE DAWSON, MARIE GREGORY, NETTIE BRETT SEWELL, NAOMI NEWELL, FRANCES CURRIN.

GLEE CLUB

EDNA EARLE PERRY

President



PERRY



First Line: MILDRED HOLLOWELL, MARY LOIS STURDIVANT, AGNES DAVENPORT, ROSALYN MASSEY, BONNIE MAE HALL, JULIA HILDRETH, MARTHA HAMILTON, ANNE FISLER.

Second Line: EDNA CRAWLEY, INDIA HILL, CATHERINE WALLACE, NETTIE BRETT SEWELL, NELL LEE, EVELYN JERNIGAN, MADELINE EAKES, ELAINE CALL.

Third Line: DOROTHY LASSITER, ANNA LEE WOOD, HELEN SAWYER, EDNA EARLE PERRY, MARY EVELYN THOMPSON, BLANCHE WELDON, BARBARA CREECH.

Fourth Line: ESTER LEAKE, LENA MAE ETHERIDGE, NANCY SPERLING, MILDRED BOYCE, MAYO LEE, NELL PERRY, LOUISE TUTEN, CATHERINE CHEEK, ALICE ALLIGOOD.

Not Photographed: JESSIE BRITT, DORIS BURNEY, MARGARET WYCOFF, JOSEPHINE WADE, EOLINE SAWYER, HELEN FOLEY, ELIZABETH FERGUSON.



AIKEN

JUNIOR CABINET

EVELYN AIKEN

President



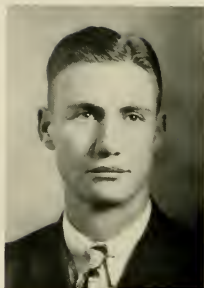
Members: JENNIE MAE BRINKLEY, JANE COPELAND, ANNIE REE DEAN, MILLIE GRAY DUPREE, ADELINE EARP, HELEN GRAY GILLAM, MARJORIE HEATH, MARY PARKER JOHNSON, PRUE NEWBY, MAUDE EVANS PHELPS, ISABELLE POLLARD, MAGDALENE POWELL, KATHLEEN STRICKLAND, JEAN WHITE.



SCIENCE CLUB

DURWARD STOWE

President



STOWE



The Science Club was organized in the fall of 1931 and under the direction of Henry Oglesby, the first president, it soon became one of the most active clubs on the campus. During the six years of its existence the Club has grown from a membership of twenty-five to one hundred twenty-five and is now affiliated with the Student Science Clubs of America. For the past two years the Club has sponsored Science Open House which has been attended by more than two thousand people. This year, with Durward Stowe as president, the Club is still marching steadily toward the goal, and plans are now being made for a presentation of a Science Pageant in the spring.





BARNES

ENGLISH CLUB

FRANCES BARNES

President



The English Club, subdivided into groups according to the special interests of the members, has to its credit this year, in addition to the regular monthly programs, the making of a literary map of the State, the performance of a one-act play at the general assembly, a public exhibit of periodicals, the improvement of the Club room, and three social events—a book party, an initiation party, and a tea for Irina Skariatina, to which everyone connected with the College was invited. Thus the Club, composed of English majors and teachers, has combined work and play.



MATHEMATICS CLUB

XYLDA COOPER

President



COOPER



In 1926 the Mathematics Club was organized under the guidance of Miss Maria D. Graham. In the ten years since, the Club has doubled its original membership of twenty-three. This year under the able leadership of Xylde Cooper, president, the Club has followed the plan of having its three regular monthly meetings each quarter varied. One, is a party; another, a program by the students; the third, a lecture by a guest speaker.





DAVIS

HOME ECONOMICS CLUB

LOUISE DAVIS

President



The Home Economics Club was organized in 1926. It is composed of students who major in Home Economics and who have passed nine hours of Home Economics work with a grade of not less than three. The Club is affiliated with the state and national Home Economics Associations. Meetings are held monthly. The object of the Club is two-fold: First, to study the work of the leaders in the field and to become acquainted with modern Home Economic problems and advantages; and second, to encourage social life and friendship among its members. Its motto recognizes the necessity of wholesome living now; it is "As our girlhood is now; so shall our womanhood be."

Page One Hundred Fifty-five



CHILDHOOD EDUCATION ASSOCIATION

FRANCES EDGERTON

President



EDGERTON



In November of this year the Primary majors joined the Association for Childhood Education. All students interested in the welfare and education of children were welcomed to our Branch. The purpose of this national organization is "To gather and disseminate knowledge of the movement for the education of young children, to bring into active cooperation all childhood education interests, to promote the progressive type of education, and to raise the standard of professional training."

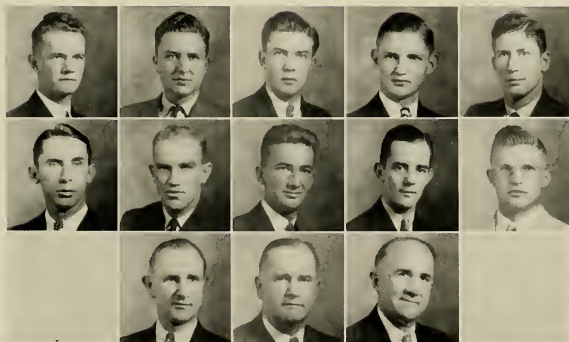


PHI SIGMA PI

WESLEY BANKSTON

President

BANKSTON



MEMBERS

First row: GEORGE WILLARD, JUDSON WHITE, THORNTON STOVALL,
FRANCIS SINCLAIR, FRANCIS FEREBEE.

Second row: HOWARD AMAN, THORNWALL GIBSON, VANCE CHAD-
WICK, ALVAH PAGE, WILLIAM SLEDGE.

Third row: DR. BEECHER FLANAGAN, DR. LEON R. MEADOWS, MR.
E. C. HOLLAR.



PHI SIGMA

HELEN TAYLOR

President



TAYLOR



In 1925, under the guidance of Mr. Deal, the French majors of East Carolina Teachers College, organized La Societe Francais, and chose as the first president, Christine Vick. The purpose of the Club being to further interest in the study of French. In 1926, the name was changed to Phi Sigma.

Every spring each French major who finished the winter term of sophomore French, is given a bid to join Phi Sigma. For those who accept this bid, initiation is in order. The regular monthly meetings are partially social.

The officers for this year are: Helen Taylor, President; Evangeline Barfield, Vice-President; and Belle Kearney, Secretary-Treasurer. This year there were twenty-three members, and a larger membership is anticipated for next year.



ELIZABETH DIXON JOHNSON
President of the Board



THE PUBLICATIONS BOARD



HUNTER

HAMMOND

FLANAGAN

McDONALD

JENKINS

WILLARD

MARTIN

JOHNSON

CRUMPLER



MAGGIE CRUMPLER
Editor



BEATRICE HAMMOND
Business Manager

THE 1937 TECOAN

The staff of the 1937 yearbook of East Carolina Teachers College presents this volume of the TECOAN with the hope that it has succeeded in its purpose, which has been to present true facts of student days on our campus that will live long after those days are past.

The readers will have to judge just how well the staff has achieved its ideals. Although there were many discouraging moments when we felt unable to cope with the problems at hand, we hope that this final result of our labors will be acceptable.

The business staff is justly proud of the amount of advertising which it has obtained this year. It is grateful to the firms who have helped to make the publication of the 1937 yearbook a financial success.

The staff wishes to acknowledge the number of faculty members and students who have helped us, and also the valuable assistance of Herbert Hitch, Charlotte Engraving Co., Charlotte, Raymond Thompson, Lassiter Press, Charlotte, and "Tommy" Daniels, Dunbar and Daniel Studio, Raleigh.





DAVIS

MCDONALD
CLARK

BREWER
EDWARDS

EAKES

THE TECOAN STAFF

MARGARET E. DAVIS	<i>Editorial</i>
MILDRED McDONALD	<i>Editorial</i>
FANNIE BREWER	<i>Editorial</i>
MARGARET EAKES	<i>Business</i>
LUCILLE CLARK	<i>Business</i>
MILDRED EDWARDS	<i>Business</i>





Sponsor for TECOAN Editor

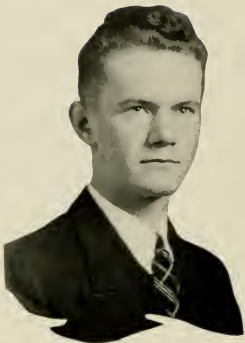
Mr. Taylor Melvin



Sponsor for TECOAN Business Manager

Mrs. A. E. Hammond





GEORGE WILLARD, *Editor*



LOUISE MARTIN, *Business Manager*

TECO ECHO

The most important aim of the *Teco Echo* staff during the past year has been threefold: (1) to present an impartial cross-section of college activity as completely as possible, (2) to endorse any movement which we believed would result in the betterment of East Carolina Teachers College, and (3) to carry out a conservative policy, giving adequate consideration in every case before drawing conclusions. If at any time our editorial comment has seemed a bit caustic, may we repeat that nothing personal was intended. We've tried to make *Teco Echo* truly the voice of this college.

If the staff has achieved any measure of success, it is because of the splendid cooperation on the part of both the student body and faculty. To them we say, "Thanks a lot." To the incoming staff we offer our sincere wishes for a better *Teco Echo*. To East Carolina Teachers College we reaffirm our allegiance.





*First row: SMITH, NEWELL, PRUETTE, BARNES, BURKS, BRAXTON.
Second row: JOHNSON, BRITT, MARTIN, DOWNING, EVANS, WATSON.*

THE TECO ECHO STAFF

VIOLA SMITH*Editorial Staff*
 NAOMI NEWELL*Editorial Staff*
 RAY PRUETTE*Editorial Staff*
 FRANCES BARNES*Editorial Staff*
 LEO BURKS*Editorial Staff*
 JOSEPH BRAXTON*Editorial Staff*

LUCILLE JOHNSON*Business Staff*
 LOUISE BRITT*Business Staff*
 HANNAH MARTIN*Business Staff*
 HELEN DOWNING*Business Staff*
 CAROLINE EVANS*Business Staff*
 MARJORIE WATSON*Business Staff*



THE RHODORA

In May, when sea-winds pierced our solitudes,
I found the fresh Rhodora in the woods,
Spreading its leafless blooms in a damp nook,
To please the desert and the sluggish brook.
The purple petals, fallen in the pool,
Made the black water with their beauty gay;
Here might the redbird come his plumes to cool,
And court the flower that cheapens his array.
Rhodora! If the sages ask thee why
This charm is wasted on the earth and sky,
Tell them, dear, that if eyes were made for seeing,
Then Beauty is its own excuse for being:
Why thou wert there, a rival of the rose!
I never thought to ask, I never knew:
But, in my simple ignorance, suppose
The self-same Power that brought me there brought you.

—RALPH WALDO EMERSON.

CHIEF MARSHAL



Nola Walters

EMERSON SOCIETY

MARGARET NORMAN*President*

OFFICERS

MARY ALICE SIMMONS*Vice-President*

BEATRICE HAMMOND*Secretary*

PETE HILL*Treasurer*



NORMAN

During the year 1936-37, the Emerson Society has done its part in carrying on those activities which enrich life on the campus. Though not the largest society in number of members, there is a spirit of loyalty and a oneness of purpose which makes the society active in social and literary affairs.

In the fall, the old Emersons united in an effort to secure new members and later, in entertaining them at a Masquerade Ball. A major activity of the year was the sponsoring of the first dance, the Homecoming Ball.

Because the members realize that we need more literary activity for the students, they are working, with the other societies, on plans for debates on the campus. With an ideal that tends toward character-building, the year is carried on.



SIMMONS



HAMMOND



HILL

EMERSON MARSHALS

Mary Alice Simmons

Ethel Lee Byrd

Margaret Griggs

Doris Mewborn

Ruth Kiker



POE SOCIETY

MARGARET E. DAVIS

President

OFFICERS

MILDRED CORBETT*Vice-President*

LOUISE CATES*Secretary*

EVELYN THOMPSON*Treasurer*



DAVIS

Realizing that a definite part of one's College life may be molded by the societies, the Poes were eager to see every freshman a live member of their society. Banners, posters, parties, words of welcome, smiles! These greeted the newcomers every day. Then came the day on which the freshman and transfers were to make their decisions. Excitement was in the air! Heads were seen together; and new students were "signing up"—some at one booth and some at the other. In the final windup, the Poes forged ahead claiming 142 members of the total 220 members that joined.

After a most colorful initiation week, the society with all its new members set out to revive the old "Poe Spirit" by seeking out and using the talent of the members.

The meetings consisting of music, dramatics, debates, socials, etc., were well planned and exceedingly interesting. To this we give credit for the most successful year of the Poe Society.



CORBETT



CATES



THOMPSON

POE MARSHALS

Mary B. Fulcher

Joyce Brattain Harrell

Irene Uzzell

Mary B. Edmundson

Huldab Hester



LANIER SOCIETY

OFFICERS

EFFIE LEE WATSON

President

MARGARET GUY OVERMAN . . . *Vice-President*

GERALDINE TYSON *Secretary*

LILLIAN PARRISH *Treasurer*



WATSON

The Lanier Society, under the leadership of Effie Lee Watson, has done good work this year. In the enrollment of new members at the first of the year our society ranked second, which makes us, not the largest; but certainly we have a great spirit of cooperation among our members as any organization on the campus.

The Freshmen of the school were entertained by the Sidney Lanier Society at a picnic and marshmallow roast behind the lake. Then, after a week of torturing the Freshmen who joined our group, we brought initiation to a close by having a party in the Society Hall.

We have had very good attendance at our regular monthly meetings. The members have co-operated with a fine show of the right spirit when they have been called upon to take part in the programs.

The programs have been of varied types. One was of literary value, in which Sidney Lanier's life and works were discussed by various members of the group. Another was a Christmas program, included in which was a Christmas story told by Miss Hyman. In still other cases the members were asked to use their individual talent to contribute to the program. Future programs consist of debates, orations, and socials.

The Lanier Society sponsored the mid-winter dance and a tea.



OVERMAN



TYSON



PARRISH

LANIER MARSHALS

Louise James

Eleanor Hardy

Effie Lee Watson

Sue Speed

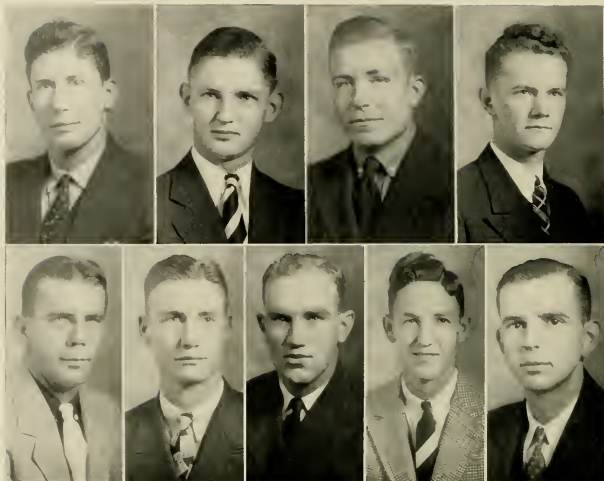
Corabob Smith



Negro mammy bums as she hangs out the week's wash, with Clarabelle pretending to help her. Three more children in the shanty are sweeping and cooking. Lazy little picaninnies play around the yard. Such an overflowing household like this helps to make the happy atmosphere usually found in Negro homes.

The ATHLETICS





VARSITY CLUB

At the close of the school year of 1936, the Varsity Club elected Fran Ferebee as their president for the coming year.

Fran has been a success as a leader. Our treasury for the first time since the beginning of the Club has an asset instead of a deficit on its accounts.

The Varsity Club for the first time gave the Senior members a new kind of sweater—a white sweater with a purple stripe for each year of service. This new regulation is now a by-law of our club.

The Varsity Club also for the first time sponsored a dance. The dance turned out to be a great success and we want to make it an annual event with our club.

OFFICERS

FRAN FEREBEE	<i>President</i>
FRANCIS SINCLAIR	<i>Secretary and Treasurer</i>

MEMBERS

LESTER RIDENHOUR
GEORGE WILLARD

HENRY HATSELL
DURWARD STOWE
THORNWELL GIBSON

CHAUNCEY CALFEE
ROY BARROW



"Bo" FARLEY
Coach

Under the able coaching of Roland "Bo" Farley, men's athletics at E. C. T. C. have progressed by leaps and bounds.

Farley, a three-letter athlete at Duke, was named on the all-southern basketball and baseball teams. Having signed a contract with the St. Louis Cardinals, he was sent by them to play with St. Jo in the Western League. Later he was traded to Rochester in the International League, but due to an injury he was forced to give up professional ball and took a position as Coach of the three major sports in the schools of Danville, Virginia. For two years he managed the Greenville Club in the Coastal Plain League. Last year he coached football for Greenville High School, and baseball for E. C. T. C., and is now coach of the three major sports at E. C. T. C.

Farley has been the backbone of athletics, and the men on the teams honor and respect him and cooperate to the fullest extent. He has been successful not only as a coach, but as a builder of men.



VANCE CHADWICK
Manager



FOOTBALL SQUAD

FOOTBALL

With the opening of the football season under the new coach we find a team which possessed to an admirable degree those intangible things called spirit, and loyalty, and a desire to express them in a fighting, unflagging spirit.

E. C. T. C. won its first home game of the season, defeating William and Mary (Norfolk Division), 25' to 0. The Teachers completely outclassed the Norfolk boys in every division of play and scored in every period of the game. The game was featured by the sensational defense play of Carpenter and Sinclair at guard and the fine punting of Pratt, who outdistanced his man, Nixon, by an average of ten yards to the kick. The Teachers' first score came in the first period on a 20-yard pass from Shelton to Gibson.

Shelton made the extra point on a line play. In the second quarter, the Teachers scored on a 70-yard run by Ridenhour, who intercepted a pass on his own 20-yard line. In the third period the Teachers marched down the field from their opponents' 49 for successive downs, with Ferebee carrying the ball over for the touchdown. The final touchdown came in the last quarter when Pratt returned a kick for 58 yards through William and Mary's defense.

The Pirates lost their second game of the season to Guilford College 6 to 0. The Quakers gained 279 yards to the Teachers' 86, but they failed to collect on the touchdown. The Quakers crossed E. C. T. C.'s goal three times—once the ball was brought back and Guilford penalized for holding—then Brinkley recovered a Pirate lateral that was brought back, fumbled, and ran over the goal line only to fumble himself. The Quakers had the ball within scoring distance but the Pirates held them off. Once the Pirates held them on the one yard mark until a fumble was recovered for a touchdown.

The Pirates lost a hard fought game to W. C. T. C., 7 to 6. E. C. T. C. outplayed, outgained, completed more passes, and gained more first downs than did the W. C. T. C. team. During the first half, the Pirates gained considerable ground with passes and line bucks. "Fran" Ferebee went over the goal line first, but the referee brought the ball back and penalized E. C. T. C. five yards for being offside. W. C. T. C. did not threaten E. C. T. C.'s goal throughout the first half. E. C. T. C. scored on three passes after receiving the kick-off at the beginning of the second half. The placement kick for extra point was blocked.

During the rest of the third quarter both teams gained and lost considerable ground. The Pirates came near scoring—they were on W. C. T. C.'s four yard line, but were penalized fifteen yards. W. C. T. C. scored during the third quarter by blocking a punt behind the E. C. T. C. goal. They made the extra point on a pass play. The score W. C. T. C., 7; E. C. T. C., 6; which is the way it was when the game ended. The Pirates were on a march which couldn't be stopped it seemed, and they marched within the twenty yard line but the final ended it. The Pirates played a fine game and with a few breaks could have won the game. When we think of the fine showing our boys made, we realize that Coach "Bo" Farley is putting out a winning team.

The Pirates piled up 19 points in the second half of the Homecoming game with Louisburg College November 21, to blank the Trojans for the second consecutive year. The first touchdown came in the third period. Shelton took the ball, which rested on the Trojan's 10, and passed the pigskin to Gibson, who lateraled to Lindsey. Lindsey carried the ball across for the first six points. An attempted line play for the extra point failed. Early in the last quarter, after gains by Gibson and Ferebee placed the ball in scoring position on the Louisburg 23, Shelton passed to Lindsey across the goal line for the second touchdown. Shelton ran the ball across for the extra point. After the Trojans received the next kickoff and were held for three downs on their own 35, Brinn kicked to the Pirates' 20, and Gibson returned the punt 18 yards to his own 38. The Pirates marched straight toward the Trojan's goal line. Pratt picked up 12, Gibson 9, and Ferebee made several good gains. With the ball on the Louisburg 20, Shelton again passed to Lindsey for the final touchdown. The first half of play gave the Teachers 8 first downs to Louisburg's 3, but both teams made scoring threats. In the first quarter, the Pirates drove to the Trojan's 20, only to be held for downs. In the second quarter, Brinn took Pratt's punt on the Teachers' 45 and ran to the 10, only to be called back because of an offside penalty. Andrews recovered a Louisburg fumble on his 42, Gibson picked up a first down and a pass from Shelton to Lindsey was good for 15 yards. After the Teachers made three successive first downs, Louisburg's line held on the 16 yard line. Gibson, playing his last game for the Pirates was a consistent ground gainer, while the Shelton-Lindsey combination played a successful passing game.



FOOTBALL ACTION PICTURE



"LEX" RIDENHOUR
Captain



OTIS POWELL



BILL PRATT



1



2



5

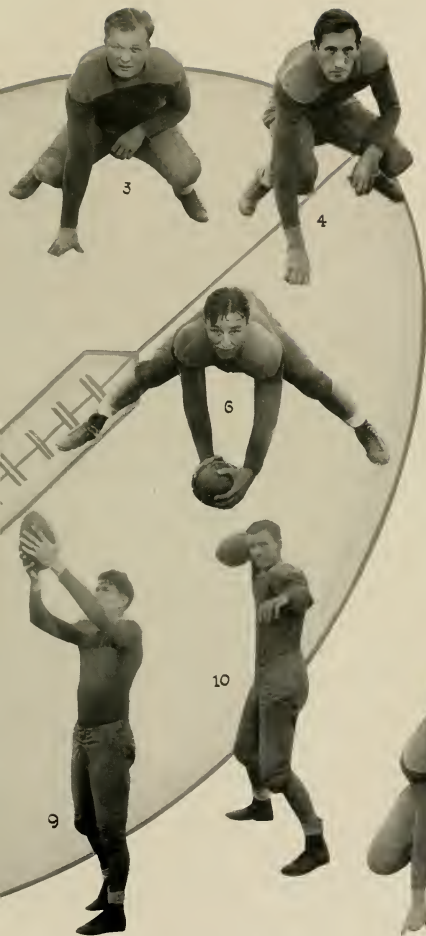


7



8

"FRAN" FEREBEE	1
JACK NOE	2
ROCKFELLOW VINTER	5
NORWOOD NORTHCUTT	7
PRIMROSE CARPENTER	8



- 3..... SAM ANDREWS
 4..... TOM DENNIS
 6..... ROBERT PITTMAN
 9..... "TEX" LINDSEY
 10..... BILL SHELTON

FRANCIS SINCLAIR

THORNWELL GIBSON

BASKETBALL

As basketball took the spot light, Coach Farley began coaching his first basketball team at E. C. T. C. With Stowe and Ridenhour, two of last season's regulars, as the nucleus he began building his team around them. In the early training period many of the candidates made much progress and in the end proved their great worth to the team.

The season opened for the Teachers in a game with Morehead City All-Stars in which the All-Stars were forced to take the short end of a 64 to 12 score.

In a hard fought game with the Rocky Mount "Y", the E. C. T. C. team resolved to bring home a second victory of the season, and they did. The final wind up was 39 to 37.

The next game proved a different story, for the Campbell "Camels" rode off with a win of 30 to 22.

In the game with Louisburg Coach Farley's Teachers gained the lead in every play and ran up a score of 39 to 24 points.

The entire Pirate basketball squad went on a scoring rampage against the Washington All-Stars and netted a total of 103 points while their opponents were scoring 18 points.

Playing sensational ball and fighting all the way, the Pirates were forced to a loss of 42 to 28 from the A. C. C. Bulldogs.

The Pirates next tackled the Ayden All-Stars and forged ahead adding another victory to their list—a score of 55 to 35.

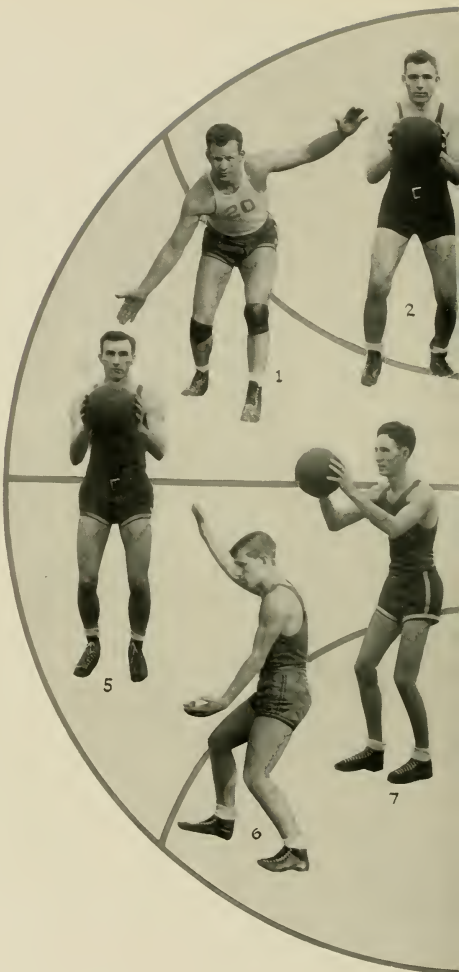
Next came the Bethel All-Stars who proved a somewhat stronger team. They, too, however, took home a loss of 32 to 29.

In the second game with the Ayden All-Stars the Pirates were not so successful. The All-Stars made a surprising attack and the Teachers barely escaped with a victory of 25 to 24.

Returning to Greenville for a second game, the Morehead City All-Stars were overcome once more and suffered a defeat of 45 to 32.

The first of a two-game series with Guilford proved to be a victory of 44 to 36 for the Quakers. However, in the return game the Pirates gained sweet revenge upon the Quakers when they trounced them by the score of 31 to 20.

Then came the fastest and most sensational game ever played on the Teachers' court—the return game between A. C. C. Bulldogs and the Teachers. Even though A. C. C. sent their 25 piece band and a large cheering section along with their team, they were unable to defeat their rival school and were bested 37 to 28.



OTIS POWELL	1
"Lex" RIDENHOUR	2
BILL SHELTON	5
JACK NOE	6
CHAUNCEY CALFEE	7



DURWARD STOWE
Captain

STANLEY SCARBOROUGH
Manager

- 3..... KELLY MARTIN
4..... FRANKLIN ROEBUCK
8..... FRAN FEREBEE
9..... ED WELLS

At Louisburg the Pirates were unfortunate and the Trojans rolled up a score of 41 to 30 against them.

The Teachers were surprised at the opposition put up by Fuquay All-Stars who walked off with the lead in a score of 55 to 47.

The Pirates added a victory to their list after playing against P. J. C. The final whistle found them ahead of a 62 to 34 decision.

Next the Pirates left for their regular trip to Virginia. They received their first defeat from the Naval Training school at Norfolk the score being 60 to 20. Another defeat came from Norfolk Division of William and Mary who won by a score of 41 to 36. Again the Pirates accepted defeat—this time from the Naval Apprentice School at Newport News. The score was 43 to 25.

Coming home the Pirates fell victims to High Point College who took a win of 42 to 23.

Next the Washington All-Stars lost another game to the Pirates. This time the final tally was 57 to 31.

The following game was another loss to the Naval Apprentice School who claimed the greater of a 35 to 39 score.

It seemed that the Washington All-Stars just couldn't get enough. So we find them victims of another shake-up—a 28 to 23 score.

The Teachers closed the season with a second loss to William and Mary—a score of 38 to 34.

BASEBALL

Something of the potency of the Teachers' 1936 baseball team can be seen in every game played. Coach Farley developed a splendid combination, both in the field and with the ashen stick.

The Teachers ushered in the season with a two-game series with the Quakers. The teams managed to split the honors of the series, the Quakers winning the first, 14 to 1, and the Teachers, led by the faultless pitching of Wells, claimed the second victory, 4 to 0.

After the first series with the Quakers, the Teachers again split honors—with Panthers of High Point. This time the Teachers took a 5 to 3 victory and, unable to regain their winning stride, suffered a defeat of 6 to 4.

On April 17, the Teachers left on their first baseball tour of the season. With their chins up, they met the Apprentices of the Naval Apprentice School. In a game in which each team was equally matched, lack of time forced the game to be a 2 to 2 draw.



WILLIAM HOLLAND	1
FRANK JENNINGS	2
DURWARD STOWE	5
ED WELLS	6
THORNWELL GIBSON	7



Next day the Braves of William and Mary capitulated after a battle of two and one-half hours. This was a game met with little resistance. Holland displayed splendid pitching allowing only five hits. The Teachers, however, sent a fusilage of hits against the "Brave" hurlers and drove the "apple" to all corners of the field to hang up a victory of 12 to 4.

Next the Teachers left on a campaign and won three of five games played. Those falling at their bats were: P. J. C., Oak Ridge, and Guilford. In two games with High Point, however, the High Point team just couldn't be beat.

Much of the success of the 1936 season is due to Manager Hyatt Forrest who handled the duties of his important office in a most capable manner. And to the team we must give congratulations for their cooperation with Coach Farley.



JIMMY JOHNSON
Captain



HYATT FORREST
Manager

- 3..... FLOYD HINTON
- 4..... W. K. WHITE
- 8..... HARVEY HINTON
- 9..... JACK BROCK
- 10..... BAXTER RIDENHOUR

WOMAN'S ATHLETIC ASSOCIATION

The beginning of a busy season for the women athletes of E. C. T. C. was suddenly interrupted by misfortune suffered by their coach, Lucile Norton, in an accident. Failure of Miss Norton to fully recover by the beginning of the winter quarter necessitated refilling of her place by another.



GLADYS BINGHAM
Coach

Miss Norton had won the love and esteem of all who knew her and to fill her place was thought to be out of the question. However, the opening of the winter quarter found Miss Norton's successor equally alert. And before long the new coach, Gladys Bingham, had won the cooperation, love, and respect of all.

Miss Bingham is a graduate of State Teachers College of Hattiesburg, Mississippi. From Peabody she received her Master's degree. While a student at S. T. C. Miss Bingham was active in all sports: basketball, baseball, soccer, and field hockey. After graduation from there in '31, she became director of Women's Athletics in her Alma Mater.

Three cheers to Miss Bingham for her loyalty and for training a great basketball team!

The Woman's Athletic Association was organized in 1912 and since that time it has been one of the most active organizations on the campus. Regular monthly meetings are held to discuss the athletic activities on campus and provide a social hour for its members.



HELEN WILSON
President



LOUISE BLANTON
Vice-President



LOUISE SHACKLEFORD
Secretary



ETHEL LEE BYRD
Treasurer

WOMAN'S ATHLETIC ASSOCIATION

The Physical Education Department has cooperated with the Association to sponsor various athletic activities. Now the Association promotes an intra-mural program including basketball, softball, croquet, archery, horseshoe, tennis, and hiking. Points are awarded for the participation in these activities and the awards consist of the college monogram and bronze intra-mural medals.

The Association sponsors inter-collegiate basketball and awards certificates and letters to those participating. It promotes special events as track and field days and play days.

At the close of the basketball tournament, "The Round Robin Tournament", this year, the Wildcats from Wilson Hall came out on top. They won all the games they played.

Then an "All-Star" team was picked from members of the various teams. They were: Forwards, Martha Leen Beaman, Prue Newby, Lucille Rogerson, Callie Charlton, Mabel Owens, Pennie Burkett, Annie R. Boyette, Virginia Woods; Guards, Hilda Stephenson, Eva MacMillan, Josephine Jackson, Sarah Wade, Cora Joslyn, Mayo Lee, and Vileigh Austin.



GIRLS' BASKETBALL

The Women's basketball team had a most successful season. Under the guidance of Miss Bingham, the new coach, the team soon became fit to tackle any team. The players played not as individuals but as a group and to this we give credit for their most successful season. Of the six games played only in one were they outscored. They were surely never outplayed.

The first team to fall in the hands of E. C. T. C. was the Chowan sextet. "Tee" Martin, and "Micky" Blanton, stars of last year's team, tied for scoring honors—ringing up fourteen points each. Newby, a newcomer to E. C. T. C., played a fine game also, running up ten points. The superb work of all the guards added to the thrill of the game and enabled the E. C. T. C. team to win by 50 to 8.

Shortly after the game with Chowan the Wingate sextet found that they, too, were not able to take the title from E. C. T. C. When the whistle blew for the final wind-up, E. C. T. C. was ahead with a score of 36 to 22.

The next game proved to be an even more exciting game. This was played with Mitchell College. In one instant Mitchell would be ahead, but in the next the E. C. T. C. players would cut them down and take the lead. In the end the E. C. T. C. girls increased their speed and shot two goals just in time to claim their third victory. This time the score was 30 to 26.

Returning the game to Chowan, the E. C. T. C. girls again entered into it whole-heartedly. They resolved to hold down the Chowan team as they had previously done. Playing sensational ball and keeping the lead in every minute of the game, the E. C. T. C. girls brought away another win over Chowan—47 to 11.



HELEN WILSON	1
PENNIE BURKETT	2
GLADYS MILLER	5
HILDA STEPHENSON	6
PRUE NEWBY	7



Next the E. C. T. C. team went on a trip. The first game was played with Mitchell College girls. Mitchell received their second sample of the E. C. T. C. teams. And in spite of fast, and steady playing, E. C. T. C. came home suffering the only defeat of the season. They were forced to bow to Mitchell to the tune of 32 to 20.

The E. C. T. C. sextet wound up the season in the game with Boone. This was, without a doubt, the most exciting game ever played by them. Not only did the Boone supporters cheer their team, but also the E. C. T. C. team. This helped the E. C. T. C. girls fight through to the end. A few minutes before the game was over Boone was ahead about ten points. But E. C. T. C. took advantage of the little time left and ran up enough points to cause the final score to be a draw 23 to 23 between the two teams.

As the season closes we find our team living up to the usual standard, having lost only one game this season.



LOUISE SHACKLEFORD
Captain



LOUISE BLANTON
Captain

- 3..... T. LOUISE MARTIN
- 4..... GERALDINE TYSON
- 8..... SUE PLEASANT
- 9..... MAVIS PARKER
- 10..... DORIS HOLLOWELL



INTRA-MURAL ATHLETICS

One purpose of Intra-mural Athletics is to provide some form of sport for all members of the student body. Another is to develop a cooperative spirit among the different members. More students are participating in each sport every year and additional events have been added to the Intra-mural program.

Each year basketball tournaments are held in which a great deal of enthusiasm and excitement prevails. Then there are the horseshoe, archery, and tennis tournaments which are equally interesting.

Other sports which are open to students are: hiking, ping-pong, and soccer.

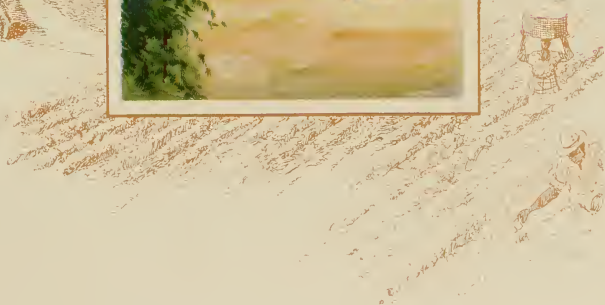
As other programs are brought to a close, the Intra-mural program culminates in a Field Day—held May 1 this year.

HELEN WILSON	<i>Manager</i>
ALMA CARRAWAY	<i>Hiking</i>
T. LOUISE MARTIN	<i>Basketball</i>
CALLIE CHARLTON	<i>Archery</i>
LOUISE SHACKLEFORD	<i>Croquet and Horseshoe</i>
SUE PLEASANT	<i>Tennis</i>



The Negro plays a real part in the industrial life of a cotton-farming section. Without his labor the wheels of many textile mills would cease to turn, and the cotton industry would be paralyzed. Thus we owe the development of a major industry, in part, to the Negro, and we acknowledge his place in the life of our South.

The FEATURES





Miriam Sawyer



Virginia Burkett





Mildred McDonald



Joyce B. Harrell





Marie Dawson



Lillian Warren





Corabob Smith



Margaret Davis





Ruth Kiker



Effie Lee Watson



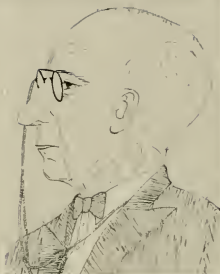
[illegible]

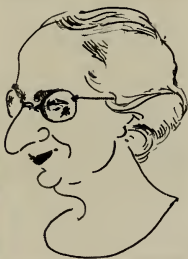
This is a large, dense collage of numerous black and white photographs, likely from the 1930s, depicting various scenes of daily life, social gatherings, and outdoor activities. The photos are arranged in an overlapping, non-linear fashion, capturing moments of people in different settings, including outdoors, indoors, and near vehicles. The images show a variety of people, mostly women, engaged in different activities: some are standing in groups, some are sitting or lying down, some are near cars, and others are in outdoor settings like fields or near trees. The collage is a visual record of a community or group of people during a specific time and place.

CAMPUS LIFE



This is a large, dense collage of black and white photographs, likely from a mid-20th-century yearbook. The photos are arranged in a non-linear, overlapping fashion, capturing various moments of student life and social gatherings. The images depict a wide range of activities: students posing in groups, couples embracing, individuals in candid moments, and scenes of outdoor recreation. The clothing and settings suggest a time period around the 1940s. The collage is a visual representation of the school's social and extracurricular life, showing students in various environments, from formal group portraits to candid snapshots of everyday interactions.





202

Everything in
Cosmetics—Soda Fountain
Luncheonette



Near Five Points

203

COBURN SHOE COMPANY

"Your Shoe Store"

Real College Styles
Combined With Quality
and Comfort

*Ask Your Friends About Our
Shoes—They Know*

Greenville, N. C.—Kinston, N. C.
Fayetteville, N. C.



Junior Miss and Misses'
Fashions

*"From the Smart
College Angle"*

*East Carolina's
Finest Department Store*

BLOUNT HARVEY

Peoples Bakery

Patronize the
College
"Y"
Store

LOWE'S
Smart Apparel
for Women

GREENVILLE, N. C.

COCA-COLA BOTTLING
WORKS

Coca-Cola

630 Pitt Street
GREENVILLE, N. C.

Compliments of
GREENVILLE
FLORAL COMPANY

PHONE 443

BEST JEWELRY CO.

Eastern Carolina's
Leading Jeweler

Quality—Value—Service

Meet Your Friends at—

CHARLES HORNE'S
DRUG STORE

Cosmetics
Soda Fountain
Drugs

GREENVILLE, N. C.

WILLIAMS'

The Store
That Is First
in

Style for Ladies
Who Want Something
New and Appealing

— **The Ladies' Store** —

Visit
**HILL HORNE'S
DRUG STORE**

**DRINK
ROYAL CROWN
COLA**

Manufactured by
Nehi Bottling Co.

Compliments of
**John Flanagan Buggy
Company**

**Better Photographs
BAKER'S STUDIO**

GREENVILLE, N. C.

Compliments of
White's Stores, Inc.
GREENVILLE, N. C.

— **The Proctor Hotel** —
Parents and friends of the
college girls and boys will
find our hotel greatly im-
proved this season.
— *We Welcome You* —

LADIES
Brody's Department Store
STYLE — QUALITY — ECONOMY

The Rouse Printery

Quality Printing

Engraved
Wedding Announcements
and Cards

Prices Reasonable

GREENVILLE :: :: :: N. C.

**Exclusive Apparel for
Women**

*We Show the First Things
First*

C. HEBER FORBES

GREENVILLE :: :: :: N. C.

**Mesdames Moore &
Randolph**

FLORISTS

PERSONAL SELECTION
Satisfaction Guaranteed

Phone 644

Elite Beauty Shoppe

West Fifth Street

GREENVILLE :: :: :: N. C.

*"Be Elite With an
Elite Wave"*

Phone 3

Tomorrow's Styles Today

SALLY FROCKS

*Smart Clothes for
Smart Girls*

Greenville—Wilmington
Rocky Mount

P L E A S A N T ' S

The College Girls' Store
Is Your First Stop and Last Stop
Sodas — Eats — Cosmetics
Bus Tickets—Taxi Service

Phone 80—G. L. Pleasant, Prop.

— E F I R D ' S —

*Greenville's Newest
Department Store*

Make Our Store Your Headquar-
ters When Shopping

Daily Arrivals of Merchandise
Newest Patterns and Styles

GREENVILLE :: :: :: N. C.

— L A U T A R E S —

Jewelers—Watchmakers—Engravers
SHEAFFER PENS

Modern and Up-to-Date Watches
GRUENS—TAVANNES—HAMILTON

ELGIN—BENRUS
Blue White Diamond Rings Styled by
J. R. WOOD

Quality—LUNCHEONETTE—Service

— L A U T A R E S —



DEPOSIT WITH
GUARANTY BANK AND TRUST CO.

Established 1901

Time Tested

*Member Federal Deposit Insurance Corporation
Deposits Insured Up to \$5,000.00 for Each Depositor*

E. G. FLANAGAN, *President*

W. H. WOOLARD, *Vice-President*

J. H. WALDROP, *Cashier*

DUNBAR and DANIEL

FINE PORTRAITS

132 Fayetteville St.

Raleigh, N. C.

OFFICIAL PHOTOGRAPHERS

For

The 1937 TECOAN



Achievement

~ACHIEVEMENT IN ANY LINE
OF ENDEAVOR IS THE NATURAL
RESULT OF ABILITY AND
EXPERIENCE, PLUS OPPORTUNITY.
~THIS ORGANIZATION TAKES PRIDE
IN ITS SUCCESS~SUCCESS EARNED
BY THE ABILITY OF ITS MEMBERS,
THE EXPERIENCE GAINED IN
TWENTY YEARS OF EFFORT, AND
THE OPPORTUNITIES OFFERED BY
ITS CLIENTS.

CHARLOTTIE ENGRAVING
COMPANY INC.

ARTISTS-PHOTO-ENGRAVERS-DESIGNERS
CHARLOTTE
NORTH
CAROLINA

ESTABLISHED NINETEEN FIFTEEN



SCHOOL PUBLICATIONS

THE many high awards won each year by school publications produced by us is the result of specialization based on a comprehensive knowledge of art motifs, design, layout and publication trends.

A modern printing plant operated by highly efficient craftsmen in every department provides a quality and a distinctiveness that is unsurpassed.

THE LASSITER PRESS, INC.

QUEEN CITY PRINTING COMPANY
CHARLOTTE, NORTH CAROLINA

PRINTERS OF THE
1937 TECOAN



JOYNER



30372 0104 0225 0

