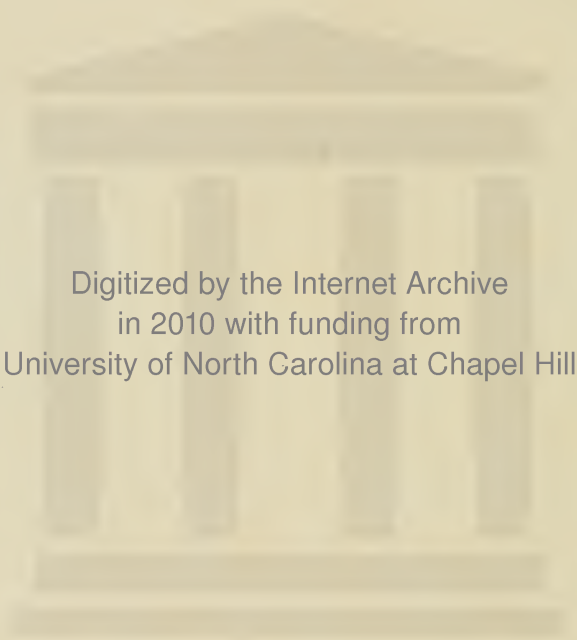


THE TECOAN 1982



Aileen Hunt



Digitized by the Internet Archive
in 2010 with funding from
University of North Carolina at Chapel Hill

<http://www.archive.org/details/tecoan1932east>

THE
Tecoan
1932



COPYRIGHT

ALICE TILLEY

EVELYN WRIGHT


1908



1997

The
TECOAN

Year Book of
EAST CAROLINA
TEACHERS
COLLEGE
GREENVILLE
NC.





CONTENTS

Book One
THE COLLEGE

Book Two
CLASSES

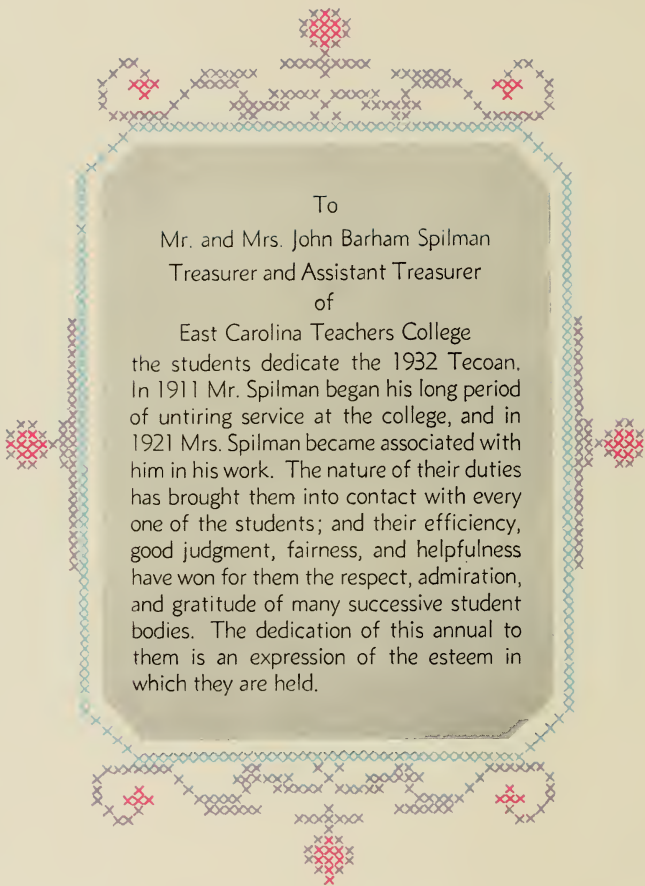
Book Three
ORGANIZATIONS

Book Four
FEATURES



FOREWORD

As in days gone by maidens embroidered their thoughts and deeds in the delicate patterns of the sampler, so we, desiring to preserve the fleeting pleasures of our college days, weave of enduring words and pictures this—our sampler.



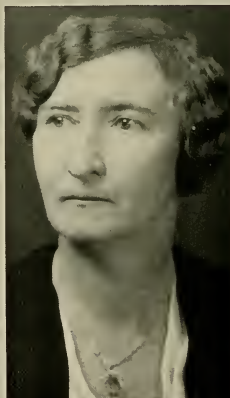
To
Mr. and Mrs. John Barham Spilman
Treasurer and Assistant Treasurer
of
East Carolina Teachers College
the students dedicate the 1932 Tecoa.
In 1911 Mr. Spilman began his long period
of untiring service at the college, and in
1921 Mrs. Spilman became associated with
him in his work. The nature of their duties
has brought them into contact with every
one of the students; and their efficiency,
good judgment, fairness, and helpfulness
have won for them the respect, admiration,
and gratitude of many successive student
bodies. The dedication of this annual to
them is an expression of the esteem in
which they are held.



SPONSORS FOR 1932 TECOAN



MRS. A.P. TILLEY
DURHAM, N.C.



MRS. M.L. WRIGHT
GREENVILLE, N.C.





ALICE TILLEY
EDITOR



EVELYN WRIGHT
MANAGER



FACULTY ADVISERS AND ASSOCIATE STAFF



MARY ALICE BULLOCK



LOREE CAGLE



MISS KATHERINE HOLTZCLAW



MISS MARY GREENE



MARION K. FORT



M.L. WRIGHT



SARA JOHNSON



DORIS MAE JONES



NINA WALSTON

*Try to
some other
way
remember
can open
good
dot*

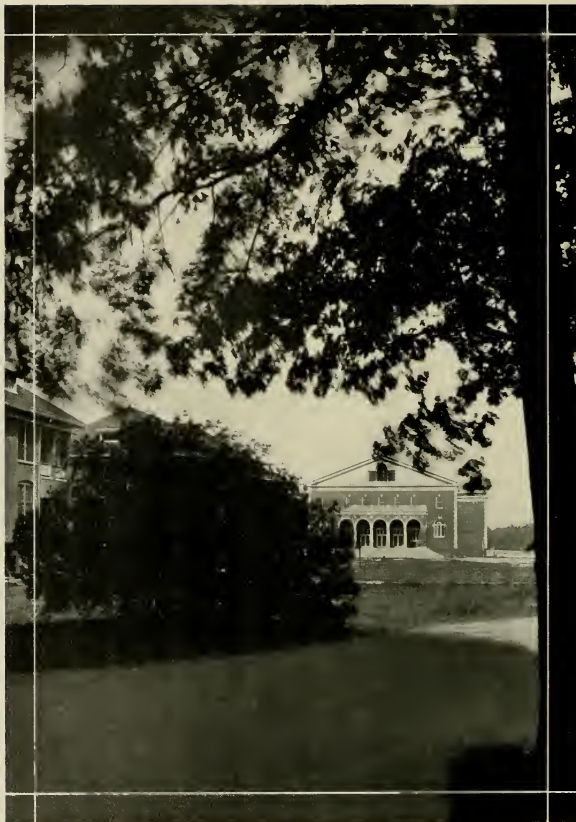
*the girl was
smiling.*

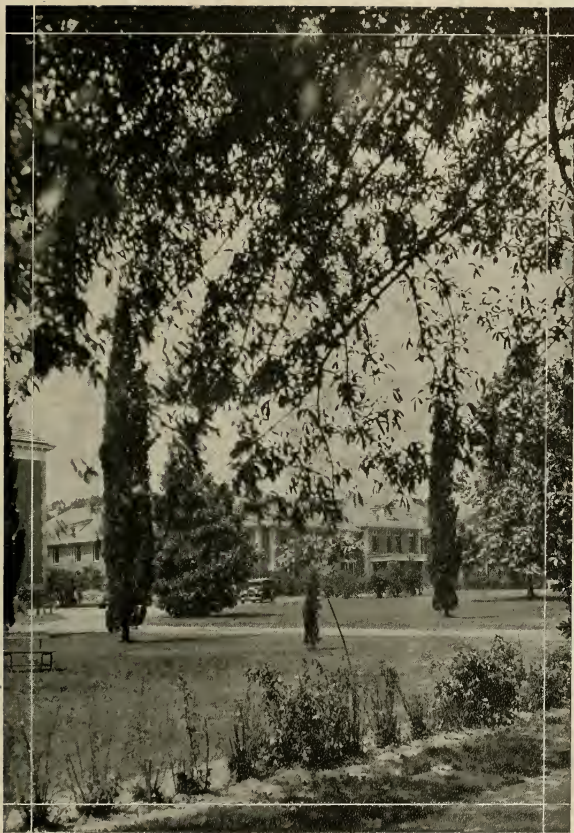


BOOK ONE

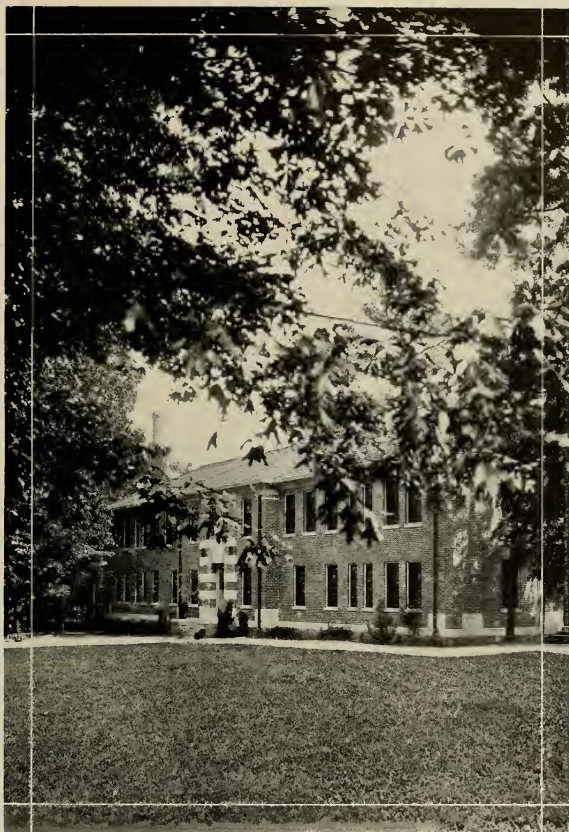
COLLEGE

























Officers and Administration

ROBERT H. WRIGHT.....	<i>President</i>
LEON R. MEADOWS.....	<i>Director of Summer School</i>
J. B. SPILLMAN.....	<i>Treasurer</i>
MRS. J. B. SPILLMAN.....	<i>Assistant Treasurer</i>
B. W. GINN.....	<i>Bookkeeper</i>
HAZEL WILLIS.....	<i>Secretary</i>
HOWARD J. MCGINNIS.....	<i>Registrar</i>
OLA ROSS.....	<i>Assistant Registrar</i>
MATTIE SCOVILLE.....	<i>Secretary</i>
AGNES WADLINGTON.....	<i>Secretary</i>
ELLEN BOWEN.....	<i>Secretary</i>
MRS. NANNIE JETER.....	<i>Dietitian</i>
ANNIE L. MORTON.....	<i>Dean of Women</i>
ELIZABETH SMITH.....	<i>Assistant Dean of Women</i>
ARLEY V. MOORE.....	<i>Dormitory Matron</i>
MRS. MAMIE G. BRADSHER.....	<i>House Director</i>
MRS. W. G. MCKEAN.....	<i>House Director</i>
IRENE HILL.....	<i>Secretary of Training School</i>
DR. J. E. NOBLES.....	<i>Physician</i>
ANNIE MORRIS.....	<i>Superintendent of Infirmary</i>
MARY LEA SMITH.....	<i>Assistant Superintendent of Infirmary</i>
A. A. HENDERSON.....	<i>Steward</i>
WADE H. HOLMES.....	<i>Electrician</i>
J. C. COCKRELL.....	<i>Electrician</i>
A. C. FORNES.....	<i>Superintendent of Grounds and Buildings</i>
W. L. BALDER.....	<i>Carpenter</i>
J. L. WILLIAMS.....	<i>Policeman</i>

Board of Directors

HON. A. T. ALLEN, <i>Chairman Ex Officio</i>	Raleigh, N. C.
O. P. MAKEPEACE.....	Sanford, N. C.
J. K. WARREN.....	Trenton, N. C.
W. S. MOYE.....	Rocky Mount, N. C.
H. D. WILLIAMS.....	Kenansville, N. C.
MRS. J. D. DAWSON.....	Kinston, N. C.
MRS. CHAS. S. FORBES.....	Greenville, N. C.
CARL GOERCH.....	Washington, N. C.
MRS. W. B. MURPHY.....	Snow Hill, N. C.
H. C. BRIDGERS.....	Tarboro, N. C.
E. G. FLANAGAN.....	Greenville, N. C.
JAMES L. GRIFFIN.....	Pittsboro, N. C.
F. C. HARDING.....	Greenville, N. C.



DR. ROBERT H. WRIGHT
President



MISS ANNIE L. MORTON
Dean of Women



DR. LEON R. MEADOWS
Director of Summer School

Faculty and Administration

E. L. HENDERSON

Administration and Supervision

C. L. ADAMS

*Director of Instruction in Education
and Psychology*

HOWARD J. MCGINNIS

Psychology

MAMIE L. EPPES

Education

MARION K. FORT

Psychology

LUCILE CHARLTON

Education

LUCY NULTON

Education

ANNIE C. NEWELL

Education





Faculty and Administration

L. R. MEADOWS
Director of Instruction in English

ALICE LUCILLE TURNER
English

MARY GREENE
English

LOIS GRIGSBY
English

EMMA HOOPER
English

MAMIE E. JENKINS
English

SARA G. SOMERVILLE
Physical Education

R. C. DEAL
*Director of Instruction in Foreign
Language*

ELLA GRAVES THOMPSON
Foreign Language

Faculty and Administration

A. D. FRANK

Director of Instruction in History

E. C. HOLLAR

History

E. Cleveland Hollar.

LAURA T. ROSE

History

M. L. WRIGHT

*Director of Instruction in Sociology
and Economics*

BEECHER FLANAGAN

Economics

DORA E. MEADE

Director of Instruction in Music

LOIS V. GORRELL

Music

GUSSIE KUYKENDALL

Music

EUGENIA THOMAS

Music



Faculty and Administration



KATE W. LEWIS

Director of Instruction in Industrial Art



KATHERINE HOLTZCLAW

Director of Instruction in Home Economics



MRS. A. E. BLOXTON

Director of Instruction in Home Economics



R. J. SLAY

Director of Instruction in Science



LORAIN HUNTER

Science



CATHERINE CASSIDY

Science



P. W. PICKLESIMER

Director of Instruction in Geography



J. B. CUMMINGS

Geography



HERBERT REBARKER

Director of Instruction in Mathematics

Faculty and Administration

LOUISE WILLIAMS
Mathematics

HELEN G. GRAY
Librarian

MARGARET SAMMONS
Librarian

GLADYS HUGHES
Critic Teacher

CHRISTINE JOHNSON
Critic Teacher

EUNICE MCGEE
Critic Teacher

MARY E. WINTERS
Critic Teacher

ELIZABETH HYMAN
Critic Teacher

ANNE REDWINE
Critic Teacher



Faculty and Administration



FRANCES WAHL
Critic Teacher



GERTRUDE RHODES
Critic Teacher



FRANCES HUDGENS
Critic Teacher



J. H. ROSE
City Superintendent



CONNIE HORNE
Critic Teacher



VESTER MULHOLLAND
Critic Teacher



MRS. C. A. BOWEN
Critic Teacher



MISS CLEM BRIDGES
Critic Teacher



MABLE MADDUX
Critic Teacher

Faculty and Administration

MRS. BESSIE PICKLESIMER
Critic Teacher

LAURA THOMAS
Critic Teacher

HAZEL WILLIS
Secretary

OLA ROSS
Assistant Registrar

MRS. J. B. SPILMAN
Assistant Treasurer

B. W. GINN
Bookkeeper

AGNES WADLINGTON
Secretary

ELLEN BOWEN
Secretary

ELIZABETH SMITH
Assistant Dean of Women



Faculty and Administration



ARLEY V. MOORE
Dormitory Matron



MAMIE G. BRADSHER
Dormitory Matron



MRS. M. C. MCKEAN
Dormitory Matron



ANNIE MORRIS
Superintendent of Infirmary



MARY LEA SMITH
Assistant Superintendent of Infirmary



MR. A. A. HENDERSON
Steward



MRS. NANNIE JETER
Dietitian



BOOK TWO

CLASSES



ANN WARLICK HILLMAN

COLORS: *Purple and Gold*

FLOWER: *White Rose*

MOTTO: *Not failure, but low aim is crime*

Senior Class Poem

*Only the best to do
Only the truth to see,
Only to live anew,
In all Sincerity.
These in our hearts we hold,
Three wishes sincere,
These may we all uphold
In our lives here.
Sweet may our memories rest,
Alma Mater, with you,
As those who give their best,
That class of '32.*

CAROLYN CONNER.



NANNIE SMITH
Senior Class President



Senior Class Officers

NANNIE SMITH.....	<i>President</i>
SARA JOHNSON.....	<i>Vice President</i>
ANNIE LEIGH BRYANT.....	<i>Secretary</i>
EDNA PEELE.....	<i>Treasurer</i>



MARION LORRAINE ADLER
Kinston, N. C.

Elementary Education

Lanier Society; Y. W. C. A.; Elementary Council; Proctor, '30; Athletic Association, '30, '31; Senior Class TECOAN Representative, '32.

ANNIE CLARA BAKER
Wilmington, N. C.

Elementary Education

Emerson Society; Y. W. C. A.; Athletic Association, '30, '31; Proctor, '30; House President, '31; Emerson Society *Teco Echo* Reporter, '32; Scribler's Club, '32; New Hanover County Club, '31; Senior Representative to Student Government Association, '32; Elementary Council.



LELA BROWN BARNHILL
Everett's, N. C.

Primary Education

N. C. C. W.; University of N. C.; Ap-
palachian State Teachers College; Emerson
Society; Elementary Educational Council;
Martin County Club; Y. W. C. A.

EULA BASS
Black Creek, N. C.

Home Economics

Poe Society; Y. W. C. A.; Delta Omicron
Sigma; President Delta Omicron Sigma, '32;
Proctor, '31.



DAISY BELK
Unionville, N. C.

Elementary Education

Queens-Chicora College, '27, '29; Athletic Association, '31; Y. W. C. A.; Elementary Council, '31.

LELIA ELLEN BELK
Waxhaw, N. C.

Science, English and History

Y. W. C. A.; Y. W. C. A. Cabinet, '29; Student Volunteer; Student Volunteer President, '30; Lanier Society; English Club; Science Club, '32; Phi Epsilon, '29, '30; Proctor; TECOAN Representative; *Teco Echo* Reporter; Scribblers, '32.



LOUISE BRAKE
Rocky Mount, N. C.

Mathematics and Science

Poe Society; Y. W. C. A.; Science Club;
Math. Club.

MILDRED BRAXTON
Fort Barnwell, N. C.

Home Economics and Science

Louisburg College, '28, '30; Poe Society;
Delta Omicron Sigma; Y. W. C. A.



ANNIE LEIGH BRYANT
Elm City, N. C.

Primary Education

Emerson Society; Y. W. C. A.; Class Secretary; '31, '32; Athletic Association, '29, '30, '31, '32; Basketball, '30, '31, '32; Elementary Education Council; Proctor, '31.

RUTH BURKETTE
Lewiston, N. C.

Primary Grade

Poe Society; Elementary Education Club; Y. W. C. A.; Athletic Association.



EVA BUTLER
Clinton, N. C.

Intermediate Education

Pineland College, '29, '30; Emerson
Society; Y. W. C. A.

HELEN CARLTON
Warsaw, N. C.

Home Economics

Emerson Society; Y. W. C. A.; Athletic
Association; Delta Omicron Sigma; Student
Council; Duplin-Pender Club.



MARGARET CARLTON
Warsaw, N. C.

History and English

Y. W. C. A.; Student Volunteer Band;
Emerson Society; Athletic Association;
Wearer of College Monogram; English
Club; *Teco Echo* Reporter for English Club;
Duplin-Pender Club; Vice President Duplin-
Pender Club.

THELMA CHERRY
Greenville, N. C.

Mathematics and Science

Science Club; Math. Club.



LILA STUART CHESNUTT
Rocky Point, N. C.

Home Economics and Science

Flora Macdonald College, '28, '30; Poe
Society; Delta Omicron Sigma; Y. W. C. A.;
Science Club.

MARY BELLE CLARK
Virgilina, Virginia

Science and History



ADA ELIZABETH CONLEY
Marion, N. C.

Primary Education

Emerson Society; Y. W. C. A.; Proctor;
Elementary Education Council.

CAROLYN WHITE CONNER
Belhaven, N. C.

English and History

Emerson Society; Class Poet, '31, '32;
English Club; Assistant Editor *Teco Echo*,
'31, '32; Proctor, '30; Centenary College of
Louisiana, '29.



MARY LUCILLE CONNER
Rich Square, N. C.

Home Economics and Science

Louisburg College, '28, '30; Emerson
Society; Y. W. C. A.; Delta Omicron Sigma;
Science Club.

JOSEPHINE DUNLAP
Wadesboro, N. C.

Primary Grade

Graduate of Queens College.



MARGARET CATHERINE EDWARDS
Kinston, N. C.

French and English

N. C. C. W.; Phi Sigma.

CATHERINE ELIZABETH FLAUGHER
Ayden, N. C.

History and French

Poe Society; Marshall, '30; *Teco Echo* Reporter for Poe Society, '32; Athletic Association; Basketball Team, '30, '31, '32; Class Cheer Leader, '31; Advertising Manager *Teco Echo*, '31; Phi Sigma; Vice President Phi Sigma, '31, '32; Y. W. C. A.



MARJORIE FLYTHE
Graham, N. C.

English and History

Poe Society; English Club, '31, '32; Class
Teco Echo Reporter, '30; Poe Society *Teco*
Echo Reporter, '30; Secretary Student
Government Association, '31; Vice President
Poe Society, '31; President Poe Society, '32.

LOUISE FOWLER
Hamlet, N. C.

French and Latin

Classical Club; Mars Hill College, '29, '30;
Carson-Newman College.



HAZEL FUTRELL
Woodland, N. C.

History and Geography

Class Vice President, '29; Class President, '30; Marshal, '30; Vice President of Northampton Club, '30; House President, '31; Y. W. C. A.; Poe Society; Glee Club, '30, '31, '32; Y. W. C. A. Choir, '31, '32; Poe Society Critic, '32; *Teco Echo* Representative of Geography Club, '31, '32; *TECOAN* Representative of Geography Club, '32.



OLIVE GRAY GILBERT
Clinton, N. C.

Primary Education

Emerson Society; Class Secretary, '29; Society Secretary, '30; Y. W. C. A. Cabinet, '31; Athletic Association, Vice President, '31; *Teco Echo* Reporter, '30; Elementary Education Council, '30, '31; Inter-Society Committee, '30; Wearer of College Monogram and Star; Class Basketball Team, '29, '31, Captain, '31, '32; Baseball Team, Captain, '30; Student Volunteer, Vice President, '31; Proctor, '28, '31; Glee Club.



MILDRED GRIFFIN
Wingate, N. C.

French and History

Wingate Junior College, '29, '30; Emerson Society; Y. W. C. A.; Phi Sigma; English Club.

KATHLEEN GUARD
Coinjock, N. C.

Intermediate Education

Emerson Society; Louisburg College, '29; Albemarle District Club, '30, '31; Secretary of Albemarle District Club, '31; Y. W. C. A.; Athletic Association, '30; Elementary Education Council, '32.



LAURA HAMMOND
Trenton, N. C.

English and French

RUTH LENORE HARDY
La Grange, N. C.

Primary Education

Lanier Society; Elementary Educational Council; Athletic Association; Y. W. C. A.; Lenoir County Club; Proctor; Appalachian State Teachers College.



JANE HALL
Greenville, N. C.

History and Geography

BESSIE HANCOCK
Scotland Neck, N. C.

Intermediate Education

Chowan College; Meredith College; Poe
Society; Y. W. C. A.; Glee Club, '31.



ILA BERNICE HARRELL
Harrellsville, N. C.

Science and French

Poe Society; Athletic Association, '28, '29; Hertford County Club, '29; Phi Sigma; Science Club; Y. W. C. A., '28, '29.

LENA EVELYN HELLEN
Vanceboro, N. C.

Home Economics and Science

Emerson Society, '29-'31; Emerson Debater, '29; Emerson Marshal, '29, '30; *Teco Echo* Staff, '29, '30; Delta Omicron Sigma, '29-'31; Athletic Association, '29, '30; Y. W. C. A.



LILLIE HINSON
Mount Pleasant, N. C.

Mathematics and Science

Emerson Society; Math Club.

ADA HUDSON
Pollocksville, N. C.

Primary Education

Meredith College; Emerson Society; Y. W.
C. A.; Athletic Association, '30; Proctor, '30;
Society *Teco Echo* Reporter; Class Critic,
'30; Emerson Society Critic; Superlative, '31.

can here's hoping
 you will enjoy your
 new work for next
 year I'm wishing you
 a big success. Love
 Myrtis



MYRTIS GILCHRIST HUGHES
 Parkton, N. C.

Home Economics and Science

Queens College; Emerson Society; Delta
 Omicron Sigma; Science Club; Y. W. C. A.

ISABEL HUNT
 Wake Forest, N. C.

Elementary Education

Emerson Society; Athletic Association,
 '30, '31; Y. W. C. A.; Wake County Club,
 '29; Elementary Educational Council, '31,
 '32.



ELOISE CURTIS HYDE
Greenville, N. C.

Latin and English

Emerson Society; English Club; Vice
President Classical Club, '30; President
Classical Club, '31.

MAGGIE INMAN
Fairmont, N. C.

French and English



DOLPHINE IREY
Enfield, N. C.

*History and English.
Enfield N.C. '29-'30. Transfer to
this society. English - '29,
English - '30.*

MILDRED IVES
Elizabeth City, N. C.

Home Economics

Emerson Society; Y. W. C. A.; Delta Omicron Sigma; Class President, '29, '31; Proctor, '30; Business Manager of Handbook, '30; Secretary Delta Omicron Sigma, '31; Chairman Campus Committee, '31; Editor-in-Chief Handbook, '31; Entertainment Committee, '31; Delegate to State Home Economics Convention, '31; Vice President Student Government Association, '32; Superlatives, '32.



MARJORIE JACKSON
Winterville, N. C.

English and History

Poe Society; English Club; Y. W. C. A.

SUSIE EVELYN JENKINS
Robersonville, N. C.

Primary Education

Appalachian State Teachers College;
Emerson Society; Elementary Educational
Council; Athletic Association; Y. W. C. A.;
Martin County Club.



KATHRYN JOHNSON

Liberty, N. C.

English and History

Guilford College; Emerson Society; English Club, '31, '32; Class Critic, '30, '31; Athletic Association, '30, '31; Class Basketball Team, '30, '31; Vice President Emerson Society, '31, '32; President English Club, '31, '32.

SARA STROTHER JOHNSON

Ayden, N. C.

Home Economics and Science

Emerson Society; Y. W. C. A. Cabinet, '30; Vice President Class, '31; *Teco Echo* Staff, '30, '31; Delegate to N. C. C. P. A., '30; *Tecoan Staff*, '31; Phi Epsilon, Vice President, '30; President, '31; Delta Omicron Sigma Treasurer, '31.



IRENE JONES
Youngsville, N. C.

History and French

Lanier Society; Y. W. C. A.; Phi Sigma;
Class Student Council Representative, '29.

KATHERINE RUTH JONES
Greenville, N. C.

English and French

English Club, '31, '32; Emerson Society;
Phi Sigma, '31, '32; Pitt County Club, '30;
Scribblers Club, '32; Class Cheerleader, '30,
'31, '32; Emerson Orchestra, '31, '32;
Manager Emerson Orchestra, '31, '32.



LOUISE CECELIA JONES
Greenville, N. C.

English and French

English Club, '31, '32; Phi Sigma, '31, '32;
Glee Club, '30, '31; Emerson Society, '28-'32;
Pitt County Club, '29.

MARY LOUISE JONES
Harrellsville, N. C.

Primary Education

May happiness & success
be yours always. Adieu
I like you heaps
Mary Louise



ROXY JONES
Blounts Creek, N. C.

Elementary Education

Y. W. C. A.

LOUISE JOYE
Lamar, S. C.

Elementary Education

Poe Society; Y. W. C. A.



MARY ELIZABETH KELLY

Vass, N. C.

Mathematics and History

Y. W. C. A.; Mathematics Club; *Teco*
Echo Reporter, '31; Poe Society.

RUTH C. KING

Kinston, N. C.

Grammar Grade

Louisburg College, '28; Emerson Society,
'30, '31; Y. W. C. A.



IRMA KNOWLES
Plymouth, N. C.

French and English

Lanier Society; English Club; Phi Sigma;
Athletic Association, '31.

VIRGINIA LANG
Farmville, N. C.

Graduate Work

Graduate of Meredith College.



MARGUERITE LANE
Vandemere, N. C.

History and English

Poe Society; English Club; Athletic Association; Y. W. C. A.; Y. W. C. A. Cabinet, '31, '32; Delegate to Blue Ridge Conference, '30; Delegate to Chapel Hill Conference, '31; *Teco Echo* Reporter for Poe Society, '30, '31; *Teco Echo* Reporter for Athletic Association, '30; Assistant Editor *Teco Echo*, '31, '32; Class Treasurer, '30, '31; Budget Committee, '31; Entertainment Committee, '32.



BETSY LEE
Fremont, N. C.

Science and Home Economics

Delta Omicron Sigma.



MABEL E. LEWIS
Wilmington, N. C.

Grammar Grade

Emerson Society; Athletic Association,
'29; Y. W. C. A.; Junior Cabinet.

ETHEL LITTLE
Grimesland, N. C.

Primary Grade



RUTH LOGAN
Yadkinville, N. C.

Primary Education

Appalachian State Teachers College;
Emerson Society.

MARION TUCKER LYNCH
Goldshoro, N. C.

Primary Education

Lanier Society; Y. W. C. A.; Treasurer
Wayne County Club, '29; Lanier Society;
Cheer Leader, '29, '30, '31; Elementary
Education Council; Proctor; College Cheer
Leader; Inter-Society Committee; Lanier
Marshal, '30-'32; President Lanier Society,
'32.



ELLA MOORE
Battleboro, N. C.

Intermediate Education

Lanier Society; Athletic Association, '29; Proctor; Assistant Business Manager TECOAN; Y. W. C. A.; Edgecombe County Club, '29; Elementary Educational Council, '31, '32; Society Marshal, '31; Representative to N. C. S. F., '31; House President, '32; Statistics, '31.

MILLIE MOORE
Battleboro, N. C.

Intermediate Education

Lanier Society; Athletic Association, '29; Proctor; Y. W. C. A.; Y. W. Cabinet, '32; Edgecombe County Club, '29; Elementary Educational Council, '31, '32; Society Marshal, '31; Representative to N. S. F. A., '31; to S. I. A. S. F., '31; to N. C. S. F., '31; to Blue Ridge, '31; Inter-Society Committee, '31; Statistics, '31; Class Representative S. G. A., '30, '31; Student President, '32.



EMMA MACARTHUR
Greenville, N. C.



EDNA CARR MCCULLEN
Faison, N. C.

Grammar Grade Education

Lanier Society; Vice President Lanier Society, '31; Y. W. C. A.; Y. W. C. A. Cabinet, '31; Athletic Association, '29, '30; Elementary Educational Council; Secretary-Treasurer Elementary Educational Council, '31, '32; Student Government Association, '32; Assistant Editor Handbook, '31; Chairman Point Committee, '32.



PAULINE ELIZABETH MCCULLEN
Mount Olive, N. C.

History and English

Appalachian State Teachers College, '29;
Emerson Society; English Club.

RACHEL MOORE MCKEE
Mooresville, N. C.

History and French

Emerson Society; *Teco Echo* Reporter
Emerson Society, '30; Chairman Program
Committee Emerson Society, '30; Debater
Emerson Society, '30; Marshal, '31; Pres-
ident Emerson Society, '32; Y. W. C. A.;
Senior Cabinet, '32; Athletic Association;
Phi Sigma; Classical Club; Secretary and
Treasurer Classical Club, '30; President
Classical Club, '31.



LUCILE McLAWHORN
New Bern, N. C.

Home Economics and Science

Louisburg College, '29, '30; Poe Society;
Delta Omicron Sigma, '31, '32; Y. W. C. A.;
Science Club, '32.

VIRGINIA HANCOCK McNATT
Parkton, N. C.

Primary Education

Poe Society; Pineland College; Y. W.
C. A.



MAGGIE MCPHERSON
Haw River, N. C.

History and English

Emerson Society; Y. W. C. A., '30; English Club; Geography Club; Athletic Association; Scribblers; Managing Editor *Teco Echo*, '31; Delegate to N. C. C. P. A., '31; Editor *Teco Echo*, '32; Delegate to C. S. P. A., '32.

HENRY CLAY OGLESBY
Winterville, N. C.

Science and Mathematics

Wake Forest College, '26, '27; Emerson Society; Critic Emerson Society, '32; President Science Club, '32; Math. Club, '31, '32; Manager Basketball Team; Business Manager Co-ed Club.

Handwritten note:
 With yours
 we have a lot of friends
 with - at this year
 you're going to be
 a very good student
 and have a very good
 record in your studies,
 Henry



EDNA GERTRUDE ORR
Wallace, N. C.

Home Economics and Science

Meredith College, '27; East Carolina
Teachers College, '30, '31, '32; Delta Omicron
Sigma, '30, '31, '32; Science Club; Poe
Society; Y. W. C. A.

OLIVE PARKER
Bowden, N. C.

Science and Geography

Lanier Society; Marshal; Geography
Club; Science Club; House President.



EDNA MAY PEELE
Pikeville, N. C.

English and French

Emerson Society; Y. W. C. A.; Athletic Association, '32; Phi Sigma; English Club; Secretary Class, '32; Class Basketball Team, '32.

RUTH PICKLESIMER
Greenville, N. C.

Science and Geography

Poe Society; Geography Club, President; Science Club.

Alden,

Wine missed you on our
hall - but I'm glad you
had the house to going!

Don't forget me and all
the fun we've had at S. Clark
these two years. Hear?

May you always have
the ^{very} best of everything.

Sincerely,
Edna.



ZELMA AMELIA ROBINSON
Shallotte, N. C.

Grammar Grade Education

Graduate Pineland College; Lanier Society.

ROSLYN VIRGINIA SATTERWHITE
Henderson, N. C.

Mathematics and French

Poe Society; Marshal, '31; Athletic Association; TECOAN Representative of A. A., '30; Class Treasurer, '28; Y. W. C. A.; Class Basketball Team; Captain of Basketball Team, '30; Math Club; Secretary-Treasurer Math Club, '30; President Math Club, '32; Phi Sigma; Assistant Business Manager *Teco Echo*, '31; Business Manager *Teco Echo*, '32; Delegate to N. C. C. P. A., '31, '32; Delegate to C. S. P. A., '32.



ELVA SCHREYER
Fletcher, N. C.

Grammar Grade

Biltmore Junior College, '29, '30; Asheville Normal, Summer, '31; Lanier Society; Y. W. C. A.

MYRA SCULL
Ahoskie, N. C.

Home Economics and Science

Louisburg College, '28, '30; Poe Society; Delta Omicron Sigma; Y. W. C. A.



ERMA G. SMALL
La Grange, N. C.

History, Science and English

Y. W. C. A.; Poe Society; Proctor, '29; English Club; Science Club; Student Volunteer Group, Secretary, '31, Treasurer, '31, *Teco Echo* Reporter, '31; Delegate to State Student Volunteer Conference, '31; President Student Volunteer, '32; Delegate to National Student Volunteer Conference, '32.



NANNIE SMITH
Farmville, N. C.

French-History

Senior Class President, '32; Vice President Class, '31; Phi Sigma.



Allen, Rep
 the Council
 going next
 year. Don't
 district too
 many. The
 late of suc-
 cess to you.
 Don't forget
 me
 J. C.
 Cullie.

GRACE SNELL
 Greenville, N. C.

Mathematics and Science

Math. Club; Emerson Society.

CULLIE ELIZABETH STAFFORD
 Mooresville, N. C.

Home Economics and Science

Emerson Society, Vice President, '31;
 Marshal, '30; Delta Omicron Sigma; TEOAN
 Representative, '30; Class TEOAN Repre-
 sentative, '29; Athletic Association; Class
 Basketball Team, '29, '30, '31; Y. W. C. A.
 Cabinet, '30, '31, President, '32; Phi Epsilon;
 Delegate to State "Y" Officers Training
 Conference, '30, '31; Delegate to National
 Conference at Council of Christian Associa-
 tions at Detroit; Delegate to Blue Ridge
 Conference, '31; Ex Officio on Student Self-
 Government Association; Superlative, '32.



JESSIE STRICKLAND
Nashville, N. C.

HAZEL MARIE TAYLOR
Bachelor, N. C.

Home Economics and Science

Poe Society, '29, '32; Delta Omicron
Sigma, '29-'32; Y. W. C. A.; Science Club,
'31, '32; Proctor, '31, '32; TECOAN Repre-
sentative, '31, '32.



MILDRED ODELLE TAYLOR
Cary, N. C.

Home Economics

Pineland College, '29, '30; Emerson Society, '30, '31; Y. W. C. A.; Delta Omicron Sigma, '30, '31.

RARA LEODA TAYLOR
Severn, N. C.

History and Science

Chowan College, '28, '29; Emerson Society, '30, '31; Y. W. C. A.; Science Club, '31; Proctor, '31; Northampton County Club, '31.



VERNA GERTRUDE TEACHEY
Rose Hill, N. C.

History and English

Poe Society; Y. W. C. A.; Athletic Association; English Club; Life Service Band; Secretary Duplin-Pender County Club, '29, '30.

ALICE WHITTED TILLEY
Durham, N. C.

Home Economics and Science

Y. W. C. A.; Emerson Society; Science Club; Phi Epsilon, Secretary Phi Epsilon, '31; Delta Omicron Sigma; Vice President Class, '30; Athletic Association; Proctor; Violin Ensemble; Entertainment Committee; Associate Editor TECOAN, '30; Assistant Editor TECOAN, '31; Editor TECOAN, '32; Delegate to N. C. C. P. A., '31, '32.



FRANCES CAROLYN TYSON
Ayden, N. C.

Primary Education

Poe Society; Y. W. C. A.; Elementary
Education Council; Proctor, '29.

ANNIE DELL UPCHURCH
Apex, N. C.

Home Economics

Emerson Society; Y. W. C. A.; Delta
Omicron Sigma; Proctor, '30; Vice Pres-
ident Delta Omicron Sigma, '32.



ETHEL WALKER
Hillsboro, N. C.

French and English

Wingate Junior College, '29, '30; Poe
Society; Phi Sigma; English Club.

KATHERINE WALL
Elams, N. C.

Intermediate Education

Poe Society; Y. W. C. A.; Warren County
Club; Elementary Education Council;
Alumnae Secretary, '30; Alumnae Reporter,
'31.



NINA ESTELLE WALSTON
Scotland Neck, N. C.

English, French and Latin

Junior Cabinet, '30; Y. W. C. A.; Poe Society; Society Treasurer, '32; Class Secretary, '30; Classical Club; English Club; Phi Sigma; *Teco Echo* Reporter for English Club; Scribblers Club; Assistant Business Manager of *TECOAN*, '31, '32.

HANNAH WRAE WARD
Belvidere, N. C.

Elementary Education

Meredith College; Lanier Society; President Lanier Society, '31; Marshal, '31; Y. W. C. A.; Delegate to Chapel Hill Conference, '31; Albemarle District Club; Albemarle District Club President, '31; Elementary Education Council; Vice President Elementary Education Council, '31; President Elementary Education Council, '32; Chief Marshal, '32.



JOYCE ELIZABETH WARREN
Clinton, N. C.

History and Science

Pineland College, '29, '30; Y. W. C. A.;
Emerson Society; Science Club.

ELLA MAMIE WATSON
Albemarle, N. C.



KATHERINE WEATHERS
Raleigh, N. C.

History and Geography

Coker College, '29, '30; Lanier Society,
Vice President, '32; Class Cheer Leader,
'32; Geography Club.

HAZEL WHITEHURST
Bethel, N. C.

Elementary Education

Athletic Association, '29, '30; Y. W. C. A.;
Poe Society; Elementary Council, '31, '32;
Glee Club, '31, '32; Y. W. C. A. Choir,
'30, '31, '32; Pitt County Club.



MARY FRANCES WHITEHURST
Greenville, N. C.

Grammar Grade

Emerson Society; Elementary Educational
Council.

CHRISTINE WILKERSON
Greenville, N. C.

Primary Grade

Emerson Society; Elementary Educa-
tional Council.



HELEN WILLIAMS
Newton Grove, N. C.

History, Geography and English

Poe Society; Student Volunteer, Procter, '30; Class Basketball Team, '28, '29, '30; '31; Athletic Association, Vice President, '30; Wearer of College Monogram, Star, Medal; Baseball Team, Captain, '29; Y. W. C. A.; Geography Club, Secretary-Treasurer, '30; Vice President, '31; President Athletic Association, '31.

SARA WILLIAMS
Currituck, N. C.

Home Economics

Emerson Society; Albemarle District Club; Delta Omicron Sigma; Phi Epsilon, Vice President, '31; Athletic Association; Class Basketball Team, '30, '31.



SARAH JANE WILLIAMS
Wingate, N. C.

History and English

Wingate Junior College; Appalachian
State Teachers College; Emerson Society;
English Club.

GRACE WILLIFORD
Elm City, N. C.

Elementary Education

Emerson Society; Athletic Association;
Basketball Team, '29, '30, '31; TECOAN
Representative of Junior Class; *Teco Echo*
Reporter; *Teco Echo* Circulation Manager;
Secretary and Treasurer of Scribblers Club;
Y. W. C. A.



LUCY WILLFORD
Rougemont, N. C.

History and English

THELMA WILSON
McAdenville, N. C.

Elementary Education

Emerson Society; Y. W. C. A.; Gaston
County Club, '29; Class Representative for
TECOAN, '30; Elementary Educational
Council, '31, '32.



I. W. WOOD
Troy, N. C.

English and Science

Co-ed Club; *Teco Echo* Reporter for
Co-ed Club.

RENA LOUISE WOODARD
Kenly, N. C.

Primary Education

Poe Society; Y. W. C. A.; Proctor, '29;
Johnston County Club; Athletic Association;
Elementary Education Council, '30, '31;
Basketball Team, '30.



JUANITA WORSLEY
Greenville, N. C.

Science and Mathematics

Science Club; Math Club; Winner of
National Science Essay Contest.

EVELYN HOPE WRIGHT
Greenville, N. C.

Mathematics and Science

Poe Society; Marshal, '31; Poe Debater,
'30; Y. W. C. A.; Science Club; Phi Epsilon;
Teco Echo Reporter of Phi Epsilon, '31;
Math Club; Math Club Secretary-Treasurer,
'30; Class Secretary, '29; Assistant Business
Manager TECOAN, '30; Business Manager
TECOAN, '31, '32; Delegate N. C. C. P. A., '30,
'31; Secretary N. C. C. P. A., '31; Athletic
Association Superlatives, '32.

Senior Class History

PROLOGUE

THE curtain rises! Our hearts beat with excitement; our time has come—for four years we have worked and waited for this moment. We walk proudly upon the stage and play our part. The curtain falls, the applause dies, and all grows quiet. The drama of the class of 1932 is over. Our pleasures, struggles, and our achievements have become history. Only the memory of the play remains. If, however, we choose again to roll back the curtain of time, the four acts of our college life are enacted once more as vividly as if we turned the pages of a book and read our history there.

ACT I

In the fall of 1928 the girls came from hill and plain to become members of the class of 1932. We wandered about the campus bewildered, confused, and homesick. We had left home elated that at last we were going to college, but now everything was so new and strange. Registration was the biggest ordeal we had ever faced, but there seemed to be guardian angels called Y. W. girls that helped us through. Things didn't seem as hard after we found which room we had to go to for our classes.

The performance here by Paul Whiteman and his orchestra was a big event that made us forget we wanted to go home. The Denishawn dancers were among the most wonderful entertainers whom we had ever seen.

Then came initiation. Nobody seemed to help us get through this. After we became society members, we felt a little at home.

We saw the Seniors doing so many wonderful things that after we organized our class with Mildred Ives as president we decided that maybe we might be permitted to have a picnic. We were. We actually left the campus for this big event.

Commencement came, a great occasion for us; we were going home. It was beyond our comprehension that the Seniors were crying.

ACT II

No longer were we freshmen but Sophomores. Now, when Miss Morton spoke to the old girls we could lift our heads with pride and know we belonged. We were the ones that gave the initiation this time, and we were actually bold enough to speak to some of the teachers.

Hazel Futrell was our president and we had a busy and successful year. There were many things to do and lots of places to go.

The United States Army Band was here. We became so enthusiastic that we stood up for "Columbia, the Gem of the Ocean." We all dressed up in our evening dresses and went to the opera, "The Barber of Seville." Tony Sarg and his Marionettes were here also. It is hard to tell which of these we enjoyed the most.

We gave the next big event in honor of the Seniors—an old time square dance in the "Y" hut. Before the party was over, we could understand that our grandmothers did have fun in their young days.

ACT III

When we returned this time we were Juniors. We welcomed several new members to our class. This year Mildred Ives was elected president.

Now, we had a chance to be big sisters to the freshmen. It was almost a marvel to us that we had once been as timid as our little sisters.

All our new privileges made us realize that it was worth while working two years to get to be a Junior.

The biggest event of the year was the Junior-Senior banquet. Even the hard work that it took to make the banquet a success was fun. We almost thought we were in Holland when we entered the banquet hall and saw the tall wind-mill, the tulips, and the little Dutch boys and girls. There we remained until the wee hours of the night and then we carried away happy memories of the event.

The last act of our drama was drawing near. Next year we would be Seniors.

ACT IV

The days went by and once more we were returning to East Carolina Teachers College. This time it seemed as if we were going home.

The freshmen looked at us with awe and even the other girls said we looked better than we did before. With the thoughts of graduation, all the work that lay before us, the joy and work of practice teaching, we did feel different.

There were many important things we had to do. Nannie Smith became our president. Our Senior play was a big success. The Junior-Senior banquet made us glad that we were Seniors.

We went to hear Galli-Curci and the Don Cossacks.

The stage became crowded with happy memories of the things that filled our Senior year with joy.

At last commencement came. The goal that had been so far distant at the beginning of our career had at last been reached. Now that the end has come, the tears fill our eyes, and we are crying too, for it is with reluctance that we say good-bye.

EPILOGUE

The curtain falls, and the drama of the class of 1932 is over. Next year the actors will take their places on a different stage in a new play. But the memory of the class of 1932 will lead them on to greater success in the drama of life.

LELIA ELLEN BELK.

Last Will and Testament

We the senior class of 1932, while on the eve of graduation we look backward to our Alma Mater, hereby bequeath:

To the Faculty, a wideawake student body equally as intelligent as we have been.

To the Freshmen, our untold hopefulness and patience that will prove invaluable in helping them to stand aside cheerfully as upper classmen exercise freely their innumerable privileges.

To the Sophomores, our sisters for whom we feel quite responsible, (looking two years ahead) we leave our discarded positions which we so capably held during the early years of our teaching careers.

To the Juniors, our interest and participation in all the activities to be found here at our Alma Mater.

To all concerned, our broad and optimistic outlook on life, hoping that it will serve as a guiding post to success to all who follow us.

MARGARET CARLTON	} Testatrixes.
LAURA HAMMOND	

Class Prophecy

CLASS PROPHECY

MYAR SCULL: High soprano in "De Faustis."

MAGGIE MCPHERSON: Editor of "True Story."

ROSLYN SATTERWHITE: Business manager of "New York Times."

RACHEL MCKEY: President of National Association of Psychiatrists.

EULA BASS: Home demonstration agent.

LELA BROWN BARNHILL: School teacher.

LELIA ELLEN BELK: Head science department here.

LOUISE BRAKE: Head math department here.

PAULINE BRAY: Model in Sok's.

FRANCES BRANTLEY: Dietitian here.

MILDRED BROXTON: Saleswoman at Tiffany's.

ANNIE LEE BRYANT: Married and rearing a family.

RUTH BURKETTE: Running a concession in a carnival.

MARGARET CARLTON: Successful author.

THELMA CHERRY: Teacher in Lelia Ellen's department.

LILA CHESNUTT and LUCILLE CONNOR: Writing menus for the Ritz.

MARY BELLE CLARK: Tight-rope walker.

CAROLYN CONNER: Photographer's assistant.

ELIZABETH CONLEY: Bareback rider.

CATHERINE FLAUGHER: Hostess in night club.

MARJORIE FLYTHE and HAZEL FUTRELL: Missionaries to heathen black.

OLIVE GILBERT: Owner and operator of grocery store.

JULIA GRIFFIN: Overseer of parrot farm.

MILDRED GRIFFIN: Bus driver.

JANE HALL: Soap box orator.

LAURA HAMMOND: Radio announcer.

RUTH HARDY: Book agent.

LENA EVELYN HELLEN: Married to a Doctor.

LILLIE HINSON: Math teacher in Louise's department.

ISABEL HUNT: Running dry cleaning establishment.

ELOISE HYDE: Translating Latin ms.

MAGGIE INMAN: Chorus girl.

MILDRED IVES: Tea room manager.

MARJORIE JACKSON: In antique business.

SUSIE JENKINS: Instructor in athletic dancing.

KATHRYNE JOHNSON: Shakespearean actress.

IRENE JONES: Personal maid.

LOUISE JONES: Jean Harlow II.

LOUISE JOY and THELMA WILSON: Aviatrixes.

MAR' KELLY: Lawyer.

KATHE RINE JONES: Editor of "Ballyhoo."

RUTH KING: Nurse.

IRMA KNOWLES: French teacher.

MARGUERITE LANE: Head of employment agency.

BETSY LEE: Lie tenant Governor.

MABEL LEWIS: History teacher at E. C. T. C.

ETHEL LITTLE: Taxi driver.

RUTH LOGAN and ETHEL WALKER: Prizefighters.

TUCKER LYNCH: Movie Queen.

EMMA MCARTHUR I: Manufacturer of alarm clocks.

EDNA McCULLEN: Sculptress.

PAULINE McCULLEN: Matron of Wilson Hall.

VIRGINIA McHATT: Scientific explorer.

MILLIE and ELLA MOORE: Running kindergarden.

HENRY OGLESBY: Ford's official mechanic.

GERTRUDE ORR: Private secretary to Mr. Hoover.

OLIVE PARKER: College Dean.

RUTH PICKLESIMER: In geography department et Sarbonne.

RUTH NEAL REDFEARN: Will Rogers' successor.

ERMA SMALL: Missionary to heathen white.

ELIZABETH SKINNER: Associated with Lucian Lefong.

NANNIE SMITH: Chief contributor to "Judge."

GRACE SNELL: Librarian.

CULLIE STAFFORD: President of National Y. W.

MILDRED TAYLOR: Home economics teacher.

RABA TAYLOR: Palmist.

VERNA TEACHEY: Physical education instructor.

ALICE TILLEY: Mother of twelve children.

CAROLYN TYSON: School teacher.

ANNIE DELL UPCHURCH: Official dressmaker et White House.

FLORENCE VINCENT: Chorus girl.

KATHERINE WALL: Student secretary.

WRAE WARD: Head usher at Roxy's.

JOYCE WARREN: Vocal teacher.

HAZEL WHITEHURST: Prime Donna.

SARA WILLIAMS: Ventriloquist.

HELEN WILLIAMS: Taxidermist.

GRACE WILLIFORD: Barber.

LUCY WILLIFORD: Snake charmer.

RENA WOODARD: Oriental dancer.

EVELYN WRIGHT: Janet Gaynor's alternate.

MAMIE WATSON: Tight-rope walker.

SARA WILLIAMS: Professor of economics.

I. W. WOOD: Chief contributor to "True Story."

NINA WALSTON: Married.

HELEN CARLTON: Sign painter.

MARGARET EDWARDS: Agitator for prison reform.

KATHLEEN GUARD: Fat woman in circus.

HAZEL TAYLOR: Ma Jaters' substitute.

MARION ADLER: Portrait painter.

ANNIE CLARA BAKER: Matron in a girl's school.

LOUISE FOWLER: Latin teacher.

JOSEPHINE DUNLAP: Enterprising journalist.

DAISY BELK: Undertaker's assistant.

EVA BUTLER: Engineer.

BERNICE HARRELL: Operating peanut stand.

ADA HUDSON: Married.

MYRTIS HUGHES: Manager of a cafeteria.

DOLPHINE IRBY: Stenographer.

MARY LOUISE JONES: Pianist for Paderewski.

ROXY JONES: County superintendent.

ZELMA ROBINSON: Dealer in antiques.

ELVA SCHREYER: With Carolina Playmakers.

JESSIE STRICKLAND: Dancing in night club.

KATHERINE WEATHERS: Animal trainer.

MARY FRANCES WHITEHURST: Architect.

CHRISTINE WILKERSON: Ditto.

JUANITA WORSELY: Great Chemist.

BESSIE HANCOCK: Chief of Scotland Neck fire department.

SARA JOHNSON: Printer.

EDNA PEELE, Prophet



UNION



IONE HOOKER BRADSHER
Junior Class Mascot

COLORS: *Green and White*

FLOWER: *Lily-of-Valley*

MOTTO: *"To strive; to seek; to find; but not to yield."*

Junior Class Poem

*"To strive; to seek; to find,
But not to yield—"
The Junior class has bound
Itself to this ordeal.*

*No conquerous great are we
In fields unknown,
Yet ever do we say
Alma Mater, lead on.*

*To you, O Alma Mater,
We owe our all;
To you we pledge ourselves;
We heed your call.*

*You gave to us the best
You had to give;
Your thoughts of us came first;
That we might live.*

*When college days are done you bid
Us live abundantly,
Yet we would walk with you awhile,
This class of '33.*

BERTHA WALSTON.



Junior Class Officers

LOREE CAGLE.....	<i>President</i>
HUNTER SPEER.....	<i>Vice President</i>
BIRDIE LEE DEBNAM.....	<i>Secretary</i>
NELSON HUNSUCKER.....	<i>Treasurer</i>



Junior Class

HESTER AIKEN
Creedmoor, N. C.

MARY E. BAKER
Bakersville, N. C.

INEZ BECTON
Bachelor, N. C.

MARY BUFORD BEST
Watsaw, N. C.

ELIZABETH BIDDLE
Dover, N. C.

AMELIA BLACK
Bessemer City, N. C.

KATHERINE BLALOCK
Jonesboro, N. C.

MARY BRILEY
Chicod, N. C.

LILLIE MAE BRITT
Milwaukee, N. C.

Junior Class

VERA BROUGHTON
Stonewall, N. C.

MARY WALKER BROWN
Wilson, N. C.

LOREE CAGLE
Rutherfordton, N. C.

MARY CARSON
Stokes, N. C.

CLAYTON CHERRY
Cornelius, N. C.

SEPHIA LEE CLARK
Middleton, N. C.

ELLEN CLIFTON
Faison, N. C.

VIVIAN COOKE
Louisburg, N. C.

REBECCA COOPER
Rocky Mount, N. C.



*I have enjoyed
knowing
these girls
since the
summer of
1911. Love
Edith*



Junior Class

EDITH CORBITT
Currie, N. C.

KARA LYNN COREY
Greenville, N. C.

MIRIAM COURTNEY
Williamston, N. C.

GRACE COX
Kinston, N. C.

HILDA DAVIS
Mount Olive, N. C.

MILDRED DAVIS
Fairmont, N. C.

PERRIE DAVIS
Macon, N. C.

BIRDIE LEE DEBNAM
Snow Hill, N. C.

JOSEPHINE DIXON
New Bern, N. C.

Junior Class

MARY EDNA DOBSON
Kenansville, N. C.

ALICE MAE ELKS
Grimesland, N. C.

MARGARET M. EVERETT
Robersonville, N. C.

JULIA FARRIOR
Warsaw, N. C.

SALLY JO FIELDS
Metter, Ga.

MARGARET FISHER
Swan Quarter, N. C.

IRIS FLYTHE
Pendleton, N. C.

ZELLE FOLEY
Greenville, N. C.

EDITH FORNES
Greenville, N. C.



Junior Class

KATIE MANN GIBBS
Swan Quarter, N. C.

EVELYN GILLAM
Harrellsville, N. C.

CLEMENT GORDON
Waxhaw, N. C.

MARGARET GRIFFIN
Marshville, N. C.

MARJORIE GRIFFIN
Toronto, Canada

MARTHA GUARD
Currituck, N. C.

ELIZABETH HAYWOOD
Trenton, N. C.

VIVIAN HELLEN
Vanceboro, N. C.

MARY ELIZABETH HELMS
Goldsboro, N. C.



Junior Class

MARICE HESTER
Creedmoor, N. C.

HELEN HICKS
Wise, N. C.

RUTH HOLLOWELL
Hertford, N. C.

KEMP HOUSE
Greenville, N. C.

SARA HUMPHREY
Farmville, N. C.

NELSON HUNSUCKER
Greenville, N. C.

VERA JENNINGS
Elizabeth City, N. C.

REBECCA JOHNSON
Weldon, N. C.

MARGARET JOHNSTON
Emporia, Virginia



Junior Class

DORIS MAE JONES
Goldsboro, N. C.

LOUISE JORDAN
Powellsville, N. C.

ANNIE LAURIE KENNEDY
Kinston, N. C.

CHARLES KING
Greenville, N. C.

DOROTHY KNOX
Huntersville, N. C.

EMILY LANE
Hertford, N. C.

ROSA LEE LANG
Farmville, N. C.

MARY LANGSTON
Gates, N. C.

PANSY LANIER
Oxford, N. C.

*Allen Dear,
Yes, I'm glad
to have the opportunity
of meeting you
You are well
I consider
a fine girl
you make a
good team
President. I
to be with
you more
Yes, I will
Love*

Junior Class

RUTH LLOYD
Spencer, N. C.

MAMIE RUTH LONG
Oxford, N. C.

LARUE MANGUM
Creedmoor, N. C.

MARY MANN
Middleton, N. C.

FLORENCE MAY
Spring Hope, N. C.

GLADYS MEASLEY
Goldsboro, N. C.

BEULAH MEWBORN
Snow Hill, N. C.

IMA MEWBORN
Snow Hill, N. C.

CLARA MODLIN
Farmville, N. C.



Junior Class

CHRISTINE MOORE
Grifton, N. C.

LULA MOORE
Little Rock, S. C.

FRANCES MORTON
Greenville, N. C.

MARGARET MOYE
Goldsboro, N. C.

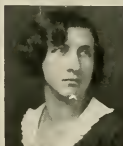
MARGARET MURCHISON
Greensboro, N. C.

LOUISE MUSSLEWHITE
Saint Pauls, N. C.

ESTELLE McCLEES
Ayden, N. C.

MARY D. McCORMICK
McColl, S. C.

MARGUERITE McGINNIS¹⁷
Greenville, N. C.



Junior Class

PEARL McHAN
Almond, N. C.

LOUISE McINTIRE
Charlotte, N. C.

BESSIE McLAMR
Parkton, N. C.

IRENE McLAURIN
Fayetteville, N. C.

CARRIE MOORE NASH
Goldsboro, N. C.

HULDAH NORLES
Greenville, N. C.

ETHEL PARKER
Woodland, N. C.

MARTHA PICKETT
Kenansville, N. C.

ABBIE MAE PORTER
Chicod, N. C.



Junior Class



ANNIE LEE POWELL
Warrenton, N. C.



MARY RABB
Marion, N. C.



EVELYN L. ROGERS
Wilmington, N. C.



ELIZABETH ROWLAND
Louisburg, N. C.



ROSA LEE SALED
Greenville, N. C.



ADAH BELLE SESSOMS
Windsor, N. C.



THELMA SHACKELFORD
Portsmouth, Va.



DOROTHY SLOAN
Wallace, N. C.



DOROTHY SMITH
Farmville, N. C.

Junior Class

HUNTER SPEARS
Rocky Mount, N. C.

CAROLYN SPENCER
Swan Quarter, N. C.

BEATRICE STALLS
Robersonville, N. C.

MARTHA STARLING
Pine Level, N. C.

BESSIE STEWART
Gloacester, N. C.

CARRIE WALL STUTTS
Mount Gilead, N. C.

JACQUELINE SWINDELL
Swan Quarter, N. C.

MARY TAYLOR
Elm City, N. C.

RUBY TAYLOR
Snow Hill, N. C.



Junior Class



SARA TREVATHEN
Pinetops, N. C.



ERIC TUCKER
Greenville, N. C.



MAE TUCKER
Marshville, N. C.



INEZ TURNER
Currie, N. C.



BERTHA WALSTON
Stantonsburg, N. C.



PAULINE WHELESS
Ansonville, N. C.



EMMA LEE WILKINSON
Kinston, N. C.



DOROTHY WILLARD
Greenville, N. C.



DOROTHY WAYNE WILLIAMS
Apex, N. C.

*Dear Mr. Tucker, I have had this is I am inside it an honor to be able to write in it. Thank you Miss Hunt.
Eric Tucker*

Junior Class

LETA WILLIAMS
Jacksonville, N. C.

ROSA WILLIAMS
Currituck, N. C.

MARY GLADYS WOMBLE
Lillington, N. C.

VIRGINIA WOODBURY
Leland, N. C.

FRANCES WOOLLEN
High Point, N. C.

JUANITA YOUNG
Lake Landing, N. C.







ELLEN MOORE FORT
Sophomore Class Mascot

COLORS: *Blue and Silver*

FLOWER: *Ragged Robin*

MOTTO: *"Rowing, not drifting"*

Sophomore Class Poem

*The class of thirty-four strives on
To seek the goal half won;
It thrusts aside all obstacles;
Its work is yet half done.*

*Two short years it has sought
The good, the just, the true;
Two years have brought its goal
Looming halfway into view.*

*Then lead on, O Class of Thirty-four,
Your standard ever uplifting,
And hold aloft your banner bright
With its motto, "Rowing, not drifting."*

MARY G. PARKER.



Sophomore Class Officers

STELLA BLEVENS.....	President
MARGARET SMITH.....	Vice President
MARY LYNN PIPKIN.....	Secretary
MARY ELIZABETH CRAWFORD.....	Treasurer



Sophomore Class

PAULINE BARBER LOULA MAE BARKER GEORGIA BELL STELLA BLEVENS HILDA BOYCE
 HAZEL BRASWELL LOLA BROOKS SALLIE BROOKS CLYDE BROWN LILLIAN BROWN
 HELEN BURNETTE JULIA HOLLAND BUTLER MARY VIRGINIA CALE MARY WILLIAMS CARE NAOMI CARE
 MARY CLARK JESSIE GLYN COLE MATTIE LOU COTTEN MARY ELIZABETH CRAWFORD REBECCA CURTIS



Sophomore Class

MARGARET CUTHRELL	ELIZABETH DAIL	EMMA LEE DAVIS	FRANCES DAVIS	ELIZABETH DENNY
MABLE DICKINS	MILDRED DIXON	BERNICE ELLIOTT	LUCY EVANS	EDNA FARROW
ILAMAE FITZGERALD	CHARLES FORBES	RACHEL FREDERICK	CLARA VANN FREEMAN	ELIZABETH FULCHER
TEMPERANCE GARRISS	NELLIE GRISSOM	HELEN HARKEY	FRANCES HARVEY	MYRTIE GRAY HODGEN

*Room, Thawit to
has been in
the first in
class. Eddie
when M. Dean
saw about
the amount
of work I had
done. I was
happy and
Rural*



Sophomore Class

CATHERINE HOLLAND	ANNIE R. HORNE	MILDRED HORTON	BEULAH HOUSE	HATTIE LEE HUMPHREY
ALEEN HUNT	MARY EMMA HURST	DORIS JONES	ELEANOR JONES	LORNA LANOLEY
MARY LOUISE LAWRENCE	ELIZABETH LEAKE	AUDREY MARTIN	MARGARET MATTHEWS	ELCY MILLER
DELIA MITCHELL	DOROTHY MITCHELL	RUTH MOORE	PEARL MOOKING	BLANCHE MOSELY



Sophomore Class

ESTELLE McCULLEN LUCILE NOELL ELIZABETH ODOM BETSY ODOM KOMA LEE OWENS
 LUCILLE PAIT MARY G. PARKER RUTH PARKER FREDA PARKS LOIS PARKISH
 MARGARET PATRICK MARY LYNN PIPKIN LEOLA PLEASANT CARRIE POWELL MARGARET RANKIN
 EVELYN RICE LUCILLE ROSE ELIZABETH ROTALL ETHELYN SANDERS IRENE SANDLING

dear: I who do think
 you are a fine girl
 and I wish you every-
 thing good.

I hope to
 see you in the future
 I like you lots



- Alice, surely
 do miss you
 hope you don't
 forget me
 I wish you
 all the best
 in your life
 Love
 Helen

Sophomore Class

ALICE JAMES SAVAGE	LOUISE SIMMONS	MARGARET SMITH	JULIA STILLEY	AGNES STRICKLAND,
FRANCES SWINDELL	VIRGINIA TAYLOR	AILEEN TEDDER	HILDA THOMPSON	LAURA THORNTON
DOROTHY TILLEY	PATTIE MAE TURNAGE	ALVA VAN NORTWICK	MARGARET WALKER	GEORGE WILKERSON
DOROTHY WILKINS	MILDRED WILLIAMS	RUTH WILLIAMS	HAZEL WOODARD	LILA WYNNE

When
ideas may be
bright and
your life
joyful
and your
physical

FRESHMAN



JOAN BLOOM
Freshman Class Mascot

COLORS: *Gold and White*

FLOWER: *Daisy*

MOTTO: *"Not to the top but climbing"*



Freshman Class Officers

FRANCES NEWSOME.....	<i>President</i>
LUCY LEROY.....	<i>Vice President</i>
FRANCES WATSON.....	<i>Secretary</i>
C. O. ARMSTRONG.....	<i>Treasurer</i>

Allen dear,
I think you are a really
sweet girl and a grand
House President. I am really
glad they sent you over to

us! because
I didn't know
how nice you
were. I hope
you have
a grand
time this
summer and
are back with
us next year.
Lots of love
Ruth

Allen, if you did
have to leave us
in Wilson I still
remember you, and
hope you'll remember
me. Love, Lucy G.



Allen, I hope you
will have a grand
time in Wilson. I
will be thinking of
you and hope you
will be thinking of
us. Love, Ruth

Allen I surely have
enjoyed seeing the society
this year. I hope to see more
of you next year. I wish
you would come to see
me this summer if you
can to see my city!

Freshman Class Roll

ETTA AIKEN	MILDRED HARRISON	WILLIAM NESBIT
LUCY ALEXANDER	ADA HEDGEPATH	FRANCES NEWSON
WILLIAM G. ANDREWS	MARY FRANCES HEDGEPATH	ANDY NOE
C. O. ARMSTRONG	GRACE LEE HELMS	ADELIA NORRIS
CORNELIA AVENT	KATHRYN HINES	MARY FRANCES O'BRIEN
HELEN BABCOCK	BESSIE HINSON	MELBA O'BRIEN
WILLIAM W. BARKER, JR.	KATHERINE HINSON	DOROTHY ODHAM
KATHRYN BARNETT	MARY VIRGINIA HORNE	ELIZABETH OVERTON
FRANCES BENTON	RACHEL HURST	ELSIE PARKER
SUSAN BEVERIDGE	MADELINE JENKINS	MILDRED PEARSON
HELEN BOOMER	KATIE LEE JOHNSON	THELMA MAE PEEL
FRANCES BOWEN	THELMA JOHNSON	MARTHA HART PELLE
GRACE BRINKLEY	THELMA JONES	ADELAIDE PELFFER
EDNA BRYAN	VERONA LEE JOYNER	JONNIE PERKINS
MARY ELLA BUNN	ELIZABETH KASEY	FLORENCE PHELPS
EDUINA BURCH	ESTHER KEENE	LOU PITTS
HENRY BURNETTE	SCOTTIE KILLSBREW	SAM QUINERLY
ELEANOR BYRD	HAZEL KING	JOSEPHINE ROBERTSON
EDWIN CANNON	MARY KING	MARY SHAW ROBESON
ELOISE BATEMAN CAMP	IDA LOUIS KERNEGAY	MAHEW SAWYER
IRENE CARMICHAEL	PENNIE KEEL LANG	DRURY SETTLE
CONSTANCE CHEAVES	DOROTHY LANIER	SUE SEWELL
FANNIE CHESSEN	BESSIE LEE	LOUISE SHARPE
HELEN CLARK	MARGARET LEE	LUCY SHEARIN
MARGARET COPPAGE	LUCY LEROY	SELIZ SMITH
JOHN H. COWARD	ROBERT LITTLE	JATIE SPAIN
CLIFTON CRAWFORD	VIRGINIA MAGNEAS	JUDITH STANTON
TRAVIS CRAWFORD	RUTH LYON MANGUM	MILDRED TOLAR
HENRIETTA CROWE	CLARA MANN	BONNIE R. TRIPP
KATHERINE CROWE	MARTHA MARINE	EVELYN TURNAGE
ELMO DUPREE	EDITH MARSLENDER	ALMA TYNDALL
CHARLES EDWARDS	EVELYN MATTHEWS	STELMA VANBORNE
LUCILLE FAISON	BORRIS MEDLIN	RUBY WALL
EDWARD FLANAGAN	NORMA MELVIN	FRANCES WATSON
ROBERT FLEMING	NINA LEE NEWBORN	FLOYD WEICHARD
ALFRED FORBES	WARDELL MILLS	FRANCES WILLIAMS
MILDRED GIBSON	EUNICE MOORE	LUCILE WILLIAMS
LUCY GLOVER	RUTH MOORE	OLA WILLIAMS
KATIE LEE GORDON	HAZEL MORRIS	SARA M. WILLIAMS
MINNIE MARGARET GORHAM	CLYDE MORTON	VERDA WILSON
SELMA GUGANUS	EDITH MORTON	VERDIE WILSON
EMMA FRANCES HARDEE	MILDRED McDANIEL	WOODROW WOODARD
HELEN M. HARKLEY	MAGGIE LEE MCGLOHON	ALICE WOODRUFF
SALLIE HARPER	ACBREY McLEAN	EVELYN W. WRIGHT
NELLIE HARRELL	IDA MAY NANCE	ALICE YANCEY
LOUISE HARRINGTON	CHRISTINE NELSON	LUCILLE YATES





MARY RUTH CARTER
Senior Normal Class Mascot

COLORS: *Blue and White*

FLOWER: *Daisy*

MOTTO: *"Not sunset but dawn"*

Senior Normal Class Poem

*Just as the sun is beginning to set
I struggle hard to find an outlet
For all the things which I've been thinking,
For the past two years our minds
Have been drinking
Of the cup that
Wisdom fills
That flourishes and bubbles and
Continues to build.
Today this cup wisdom holds
Tight,
For all will end here and will
Start a new flight
To explore what's in the space
Beyond
And to strengthen a new and tighter bond*

*But before we go let's take
Inventory
Of the Senior Normal Class
In its mighty glory,
As she shines and sparkles and
Falls in rays,
Rays that are known as
College days
Each little ray we'll cherish
And love
Like something divine
That was sent from above.
May wisdom's cup forever
Ebb and flow
As on our journey, we
Continue to go.*

BLANCHE VAN DYKE, '32.



IRMA DELL PHILLIPS
Senior Normal Class President



Handwritten notes in cursive script, likely a list of names or a letter, partially obscured by the portrait.



Senior Normal Class Officers

IRMA DELL PHILLIPS.....	<i>President</i>
LAURETA HOWARD.....	<i>Vice President</i>
ELIZABETH THOMPSON.....	<i>Secretary</i>
MARGUERITE SMITH.....	<i>Treasurer</i>

Senior Normal

MARTHA ELLA ABRAMS
Macclesfield, N. C.
Grammar Grade

Lanier Society.

PAULINE L. ADCOCK
Varina, N. C.
Senior Normal

Peace Institute, '28, '29; Poe Society; Y. W. C. A.



LENA CHERRY ALLSBOOK
Scotland Neck, N. C.
Elementary Education

Emerson Society; Class Critic, '31; *Teco Echo* Reporter, '32; Marshal, '32; Y. W. C. A.

LENA MAE ANDREWS
Sloop Point, N. C.
Primary Education

Lanier Society.



EULA BEATRICE AYCOCK
Micro, N. C.
Primary Grade

Poe Society; Y. W. C. A.; Athletic Association.

RUTH BALLENTINE
Middlesex, N. C.
Primary Education

Lanier Society; Athletic Association, '31.



NANNIE ERVIN BARBEE
Richlands, N. C.

Poe Society; Y. W. C. A.

ELOISE BARCO
Belcross, N. C.
Grammar Grade

Poe Society; Albemarle District Club, '31.





Senior Normal

DORA BEDDARD
Winterville, N. C.

Poe Society, '31.

PAULINE BOYETTE
Kenly, N. C.

Poe Society; Y. W. C. A.; Johnston County Club.

EUNICE ELIZABETH BOYKIN
Daltzell, S. C.

Poe Society; Y. W. C. A.

KATIE BARNES BRADLEY
Rocky Mount, N. C.

Primary Education

Appalachian State Teachers College; Emerson Society.

JOSEPHINE BRANTLEY
Spring Hope, N. C.

ALMA BRAXTON
Greenville, N. C.

Elementary Education

IDELL BRITT
Mount Olive, N. C.

Primary Education

Poe Society, '31, '32; Junior Y. W. C. A. Cabinet, '31; Y. W. C. A.; Secretary Student Fund, '32; Athletic Association, '31; Basketball, '31.

HOWARD MORNING BROOKS
Hamlet, N. C.

Primary Education

Lanier Society; Athletic Association; Y. W. C. A.; Class Cheer Leader, '32.

Senior Normal

LOTTIE LANE BRYAN

Garner, N. C.

Grammar Grade

Lanier Society; Y. W. C. A.

MAXINE ELIZABETH BUCHANAN

Sanford, N. C.

Primary Education

Lanier Society; Class Critic, '31, '32; Y. W. C. A.; Athletic Association, '31, '32.

LANIE HILDRED BULLOCK

Wilson, N. C.

Elementary Education

Class Treasurer, '31; Y. W. C. A.; Emerson Society.

MARY ALICE BULLOCK

Ayden, N. C.

Grammar Grade

Lanier Society; Proctor; Y. W. C. A.; Assistant Editor of TECOAN.

R. JANETTA CAIN

Acme, N. C.

Primary Education

Lanier Society; Y. W. C. A.

MILDRED KATHLEEN CAIN

Acme, N. C.

Grammar Grade

Lanier Society; Y. W. C. A.

MARY ELIZABETH CARTWRIGHT

Bath, N. C.

Grammar Grade

Lanier Society; Athletic Association, '31, '32; Y. W. C. A.

MILDRED VIRGINIA CASTELLO

Windsor, N. C.

Grammar Grade

Poe Society; Y. W. C. A.



Although I
haven't known
you very long
I like you
just like an
elder. I now
wish I could
come back to
S. C. T. C. and
work on list-
servis and you
be there. Please
beans of love
with me!



Senior Normal

EMILY CHAMBLISS
Rocky Mount, N. C.
Primary Grade

Y. W. C. A.; Lanier Society, '31, '32; Treasurer
Lanier Society, '32; Athletic Association; Proctor,
'31; Glee Club, '31, '32; Scribber's Club.

LOUISE CLARKE
Greenville, N. C.

Emerson Society.



MARGARET ELIZABETH CLEMMONS
Wilmington, N. C.

Primary Education
Emerson Society; Y. W. C. A.

MARTHA FRANCES COLE
Hamlet, N. C.

Primary Education
Lanier Society; Y. W. C. A.; Athletic
Association.



KATHLEEN ELIZABETH COOK
Wallace, N. C.

Primary Education
Poe Society; D and P Club; Y. W. C. A.

VIRGINIA DARE CRANE
Waxhaw, N. C.



DORA F. CRAWFORD
Pikeville, N. C.

Primary Grade
Emerson Society; Y. W. C. A.

AVA M. CREDLE
Belhaven, N. C.

Emerson Society; Y. W. C. A.

Senior Normal

ZOULINE DARDEN
Fayetteville, N. C.

Primary Education

Athletic Association, '30, '31; Basketball Team, '30, '31; Poe Society, '30, '31; Y. W. C. A.; Glee Club, '30, '31.

GLADYS DAVIS
Marshallburg, N. C.

Y. W. C. A.; Athletic Association, '31, '32;
Poe Society; English Club, '31.

CARRIE MERCER DICKENS

Halifax, N. C.

Grammar Grade

Emerson Society; Y. W. C. A.; Athletic Association.

ELSIE MAE DRAKE
Spring Hope, N. C.

Grammar

Lanier Society.

MARGARET M. EDWARDS
Battleboro, N. C.

Primary Grade

Emerson Society; Athletic Association, '31;
College Monogram.

HAZEL L. ELLIS
Draper, N. C.

Grammar Grade

Emerson Society; Y. W. C. A.

OPAL ERVIN
Richlands, N. C.

Primary Education

Poe Society; Y. W. C. A.

ELIZABETH LOVE FARMER
Wilmington, N. C.

Emerson Society; Y. W. C. A.



[Faint, illegible handwriting]



Senior Normal

ALICE FARRIOR
Wallace, N. C.

Primary Education

Poe Society; Y. W. C. A.; Y. W. C. A. Choir;
Glee Club; D. and P. Club.

SALLY LOU FINCH
Henderson, N. C.
Grammar Grade



EDNA M. FLAKE
Polkton, N. C.
Grammar Grade

Lanier Society; Y. W. C. A.

HAZEL VIRGINIA FLEMING
Greenville, N. C.
Grammar Grade

Lanier Society, '30, '31.



MERLE FLOYD
Fairmont, N. C.
Primary Grade

Poe Society; Y. W. C. A.; Proctor, '31.

THELMA JANE FLOYD
Fairmont, N. C.
Grammar Grades

Poe Society; Y. W. C. A.



ALDONIA CAROLINE FULLER
Smithfield, N. C.
Primary Grade

Lanier Society; Johnston County Club; Y. W.
C. A.; Cullowhee College.

CATHERINE GASKILL
Sea Level, N. C.

Lanier Society; Y. W. C. A.

Senior Normal

SADIE MAE GASKINS
New Bern, N. C.

Primary Grade

Emerson Society; Athletic Association, '30, '32;
Craven County Club, '30; Y. W. C. A.; Basket-
ball, '32.

ELLA DILL GIBBS
Swan Quarter, N. C.

Primary Grade

Emerson Society.

THERA GODWIN
Falcon, N. C.

Primary Grade

MARY ALICE GOODING
Oriental, N. C.

Primary Education

Poe Society; Y. W. C. A.

ELIZABETH GREENLEAF
Elizabeth City, N. C.

Emerson Society; *Teco Echo* Reporter; Alber-
marle Society, '31; Y. W. C. A.

FLORENCE DE ETTE GRIMES
Wilmington, N. C.

Elementary Education

Poe Society.

DORIS GURLEY
Fremont, N. C.

Primary Grade

Emerson Society, '30, '31, '32; Y. W. C. A.;
Athletic Association.

KATHERINE ATKINSON HALL
Sloop Point, N. C.

Primary Education

Lanier Society.



Senior Normal



VERA HAMILTON
Magnolia, N. C.
Grammar Grade

Lanier Society, '30, '31; Pender-Duplin County Club; Proctor, '31.



LENA HAZEL HARDY
LaGrange, N. C.
Primary Grade

Emerson Society; Athletic Association; Y. W. C. A.; Secretary Greene County Club; Proctor.



ANNA HARRIS
Greenville, N. C.
Grammar Grade



MARY ELIZABETH HARRIS
Clarksville, Va.
Grammar Grade

Emerson Society; Y. W. C. A.



MILLCENT FRANCES HARRIS
Elizabeth City, N. C.
Primary Education

Lanier Society; Y. W. C. A.



JOSEPHINE WOOLARD HARRISON
Williamston, N. C.
Primary Education

Emerson Society; Class Treoan Representative, '31; Athletic Association, '31, '32; Y. W. C. A.; Class Basketball Team, '31; Proctor.



MARY LOUISE HART
Mooresville, N. C.
Primary Education

Poe Society; Y. W. C. A.



SHARIA HATEM
Greenville, N. C.
Grammar Grade

Senior Normal

LOIS NORFLEET HAYES
Wooddale, N. C.

Primary Grade

Poe Society; Y. W. C. A.

MARCIA HELMS
Marshville, N. C.

Primary Grade

MARIANNA HELMS
Marshville, N. C.

Primary Grade

ADELAIDE NANCE HENLEY
Cheraw, S. C.

Grammar Grade

Poe Society; Athletic Association, '31; Y. W.
C. A., Student Volunteer, '31.

CORVA HOYT HERRINGTON
Ransomville, N. C.

Grammar Grade

Emerson Society; Y. W. C. A.; Athletic As-
sociation, '31, '32; Basketball Team, '31, '32;
College Monogram.

MAUDE J. HICKS
Norlina, N. C.

Grammar Grade

Poe Society; Assistant Cheer Leader Poe
Society; Cheerio Club; Y. W. C. A.; N. C. C. W.

DORIS HOBGOOD
Oxford, N. C.

Primary Grade

Poe Society, '30, '31.

DOROTHY HOBGOOD
Oxford, N. C.

Primary Grade

Poe Society, '30, '31.





Senior Normal

GLENDIA LOUISE HODGE
Kenly, N. C.

Primary Grade

Emerson Society; Y. W. C. A.; Secretary
Johnston County Club, '31; President Johnston
County Club, '32; Proctor, '32.

MARY HOGAN
Eagle Springs, N. C.

Lanier Society; Y. W. C. A.

ROSA LEIGH HORTON
Knightdale, N. C.

Primary Grade

Y. W. C. A.; Y. W. C. A. Choir, '30, '31;
Poe Society, '30, '31; Delegate B. S. U. Con-
ference, '30, Vice President B. S. U., '32.

LAURETA HOWARD
Oxford, N. C.

Primary Education

Emerson Society; Y. W. C. A.; Vice President
Class, '32.

ANNIE SUE HOWELL
Warrenton, N. C.

LOIS HUFFINS
Gibsonville, N. C.

Primary Grade

Y. W. C. A.; Athletic Association, '31; Class
Cheer Leader, '31, '32; Society Cheer Leader,
'32; Junior Cabinet, '31; Emerson Society, '31,
'32; House President, '32.

GENEVA HUGHES
Shiloh, N. C.

Grammar Grade

Poe Society; Albemarle District Club, '31.

MARY HUNSUCKER
Gibson, N. C.

Primary Grade

Lanier Society, '30, '31; Y. W. C. A.; Y. W.
C. A. Choir, '31; Glee Club, '30, '31; Athletic
Association, '31.

Senior Normal

HAZEL HUNTER
Beulaville, N. C.
Grammar Grade

Poe Society; Y. W. C. A.

LOUISE JACOBS
Georgetown, S. C.
Primary Grade

Poe Society; Y. W. C. A.

ALMA HARRIS JENNINGS
Elizabeth City, N. C.
Grammar Grade

Emerson Society; Albemarle District Club, '31.

DAISY DELLA JOHNSON
Robersonville, N. C.
Grammar Grade

Lanier Society.

ERLINE JOHNSON
Roseboro, N. C.

Y. W. C. A.; Lanier Society.

EVELYN TURLEY JONES
Clayton, N. C.
Primary Education

Emerson Society; Y. W. C. A.; Y. W. C. A. Choir; Johnston County Club.

MARY ELEANOR JONES
Louishurg, N. C.
Primary Education

Y. W. C. A.; Athletic Association, '32.

RUTH JONES
Hamlet, N. C.
Primary Education

N. C. C. W.; Poe Society, '31; Y. W. C. A.; Athletic Association, '31.





Senior Normal

EMMA DEETTE KIMREY
Wilmington, N. C.

Primary Education

Emerson Society; Y. W. C. A.; Y. W. C. A.
Junior Cabinet, '30; Athletic Association.

EUGENIA S. KING
Hampstead, N. C.

Elementary Education

MARY ELIZABETH KING
Littleton, N. C.

Primary Education

Emerson Society; Athletic Association; Y. W.
C. A.

VICTORIA KORNEGAY
Seven Springs, N. C.

Grammar Grade

Lanier Society; Y. W. C. A.

LULA LOIS LANCASTER
Goldsboro, N. C.

Primary Education

Lanier Society.

MARGARET LANE
Tyner, N. C.

Lanier Society, '30, '31; Proctor, '31; Athletic
Association.

BESSIE WARREN LAWRENCE
Kenly, N. C.

Primary Grade

Poe Society; Johnston County Club, '31

MARY LILLIAN LEE
Benson, N. C.

Grammar Grade

Poe Society; Athletic Association; Johnston
County Club; Y. W. C. A.

Senior Normal

REBECCA LEE
Benson, N. C.

Grammar Grade

Poe Society, '30, '31; Johnston County Club.

BRETA SCOTT LEWIS
Rocky Point, N. C.

Primary Grade

Poe Society; Y. W. C. A.

DAISY LEE LEWIS
Ransomville, N. C.

Primary Grade

MARJORIE LEWIS
Marshallberg, N. C.

Grammar Grade

Poe Society; Y. W. C. A.; Athletic Association,
31, '32.

MARY JAMES LIPSCOMB
Greenville, N. C.

Primary Grade

Emerson Society.

DOROTHY I. LIVERMAN
Gum Neck, N. C.

Grammar Grade

Y. W. C. A.

WILHELMINA LIVINGSTON
Wilmington, N. C.
Grammar Education

Poe Society; Poe Society Marshal, '31, '32;
Y. W. C. A.; Secretary Class, '30, '31; Athletic
Association, '30, '31; Cheerio Club.

FLORENCE ADELE LOFTIN
Wilmington, N. C.

Grammar Grade

Emerson Society; Athletic Association; Y. W.
C. A.; Proctor.





Senior Normal

VIOLET LONG
Blounts Creek, N. C.

Primary Education

Emerson Society; Y. W. C. A.

MARGARET LUCAS
Wilmington, N. C.

Primary Education

Emerson Society.

ADELL MAREADY
Chinquapin, N. C.

Poe Society; Y. W. C. A.

AUDREY McIVER MARTIN
Rich Square, N. C.

Primary Education

Emerson Society; Y. W. C. A.; Y. W. C. A.
Choir; Greensboro College.

MIN NILEE EDWARDS MARTIN
Burlington, N. C.

Primary Education

Emerson Society.

EVELYN LOUISE MAYNARD
Clayton, N. C.

Primary Education

Emerson Society; Athletic Association; Glee
Club; House President, '31; Treasurer Emerson
Society; Orchestra; Y. W. C. A. Choir; Y. W.
C. A.; Society Debater.

ESSMA MELVIN
Parkersburg, N. C.

Primary Grade

Emerson Society; Y. W. C. A.

EUNA MILLER
Mocksville, N. C.

Primary Education

Catawba College, '28.

Senior Normal

DOROTHY DELL MILLIS
Folkstone, N. C.

Poe Society.

LILLIAN PARKER MITCHNER
Franklinton, N. C.
Primary Grade

Poe Society, '30, '31, '32; Glee Club, '31, '32;
Y. W. C. A. Choir, '31, '32.

RACHEL MONK
Farmville, N. C.
Grammar Grade

Lanier Society; Athletic Association, '31; Y. W.
C. A.; Scribner's Club; Proctor.

BERTIE MORGAN
Elizabeth City, N. C.

Emerson Society; Y. W. C. A.

MARY CATHERINE MORRIS
Wilmington, N. C.

Emerson Society; Y. W. C. A.; Proctor, '31;
Student Government Representative.

ROSALIE BELL MURDOCH
Wildwood, N. C.
Primary Grade

Poe Society; Y. W. C. A.; Proctor, '31.

WILMA MURPHY
Louisburg, N. C.

Poe Society; Athletic Association.

ROTHA MURRAY
Spring Hope, N. C.

Lanier Society, '31.



Handwritten notes in cursive script, likely from a yearbook or scrapbook, partially visible on the right edge of the page.



Senior Normal

ELIZABETH McCORMICK
Jonesboro, N. C.

Primary Education

Emerson Society; Y. W. C. A.

EDNA RUTH McDANIEL
Trenton, N. C.

Primary Education

MARGARET EARL McDONALD
White Oak, N. C.

Primary Grade

Poe Society; Athletic Association, '31, '32;
Y. W. C. A.

HELEN McLAUCHLIN
Benson, N. C.

Primary Grade

TE'OGAN Representative Class, '32.

BERTHA C. McKINNEY
Bakersville, N. C.

Primary Grade

Scribbler's Club.

MARY NEAL MACNAIR
Raeford, N. C.

Primary Grade

Emerson Society; Athletic Association, '31, '32;
Y. W. C. A.

JANIE McNAIR
Hamlet, N. C.

Primary Education

Emerson Society; Athletic Association; Y. W.
C. A.

CLARA ETHEL NANCE
Reidsville, N. C.

Primary Education

Emerson Society.

Senior Normal

RUBY CLAIRE NEIGHBORS

Ruffin, N. C.

Primary Education

Y. W. C. A.

THELMA WOOD NEWSOME

Harrellsville, N. C.

Primary Grade

Poe Society.

SUSIE LEE NEWTON

McCall, S. C.

Primary Education

Poe Society.

ETTA DUDLEY NORWOOD

Bullock, N. C.

Grammar Grade

Emerson Society: Y. W. C. A.; Y. W. C. A.
Choir; Proctor, '31.

EDNA EARLE O'NEAL

Selma, N. C.

Primary Education

Lanier Society; Statistics, '32; Y. W. C. A.

PEARL PACKER

Clinton, N. C.

Primary Grade

Lanier Society.

ERNESTINE B. PARKER

Greenville, N. C.

Primary Grade

Emerson Society, '31.

MARY EFFIE PATRICK

Greenville, N. C.

Primary Education

Emerson Society.





Senior Normal

EDITH TERRELL PERKINSON
La Crosse, Va.

Elementary Education

Poe Society; Y. W. C. A.; Proctor.

LEONA PERRY
Kitty Hawk, N. C.

Grammar Grade

Lanier Society.

IRMA DELL PHILLIPS
Gibsonville, N. C.

Primary Grade

Y. W. C. A.; Athletic Association, '31; C
Class Basketball Team; Associate Editor TROOP,
'31; Emerson Cheer Leader, '32; D Class Pres-
ident, '32; Emerson Society, '31, '32; Statistica,
'32.

MARY ELIZABETH PITT
Littleton, N. C.

Primary Grade

Lanier Society; Y. W. C. A.

SALLY BRADLEY PITTMAN
Andrews, N. C.

Primary Education

Y. W. C. A.; Junior Cabinet, '31; Poe Society,
'31, '32; Vice President Poe Society, '32; Athletic
Association, '31; Class Basketball Team, '31;
House President, '32.

SALLY SUE PITTMAN
Henderson, N. C.

Primary Education

Emerson Society, '31, '32; Y. W. C. A.

HATTIE MALINDA POWELL
Greenville, N. C.

Grammar Grade

LORINE PRICE
Rocky Mount, N. C.

Primary Grade

Y. W. C. A., '31, '32; Junior Y. W. C. A.
Cabinet, '31; Athletic Association, '31, '32;
Lanier Society Marshal, '32; Basketball, '31;
Glee Club, '31.

Senior Normal

BERTHA MAIE PRITCHARD

Biscoe, N. C.

Primary Grade

Y. W. C. A.; Y. W. C. A. Choir, '31;
Athletic Association, '31, '32; Emerson Society;
Student Volunteer, '32.

MOZELLE RAY

Zebulon, N. C.

Primary Education

Lanier Society, '31.

LEONA RAYNOR

Centerville, N. C.

Grammar Grade

Emerson Society; Y. W. C. A.

MARGARET REGAN

Laurinburg, N. C.

Primary Grade

Lanier Society, '31, '32; Y. W. C. A.; Junior
Y. W. C. A. Cabinet, '31.

HELEN HORTENSE REID

Warrenton, N. C.

Grammar Grade

Poe Society; Athletic Association, '31; Y. W.
C. A.

BROWNIE ROBERSON

Robersonville, N. C.

Grammar Grade

Emerson Society; Y. W. C. A.; Proctor.

LEOTA E. ROBINSON

Jacksonville, N. C.

Grammar Grade

Athletic Association, '31; Y. W. C. A.; Emerson
Society, '31.

RUBY EVELYN ROGERS

Fuquay Springs, N. C.

Primary Grade

Emerson Society.





Senior Normal

DELHA UNDINE ROSS
Robersonville, N. C.

Grammar Grade

Y. W. C. A.; Emerson Society.

EDNA MAE ROUSE
La Grange, N. C.

Grammar Grade

Lanier Society.

MARIE H. ROYSTER
Bullock, N. C.

Primary Grade

Emerson Society; Y. W. C. A.

LILLIAN SELTZ
Mount Gilead, N. C.

Primary Grade

Emerson Society; Athletic Association; Monogram; Basketball Team, '30.

NELL SHAW
Laurinburg, N. C.

Primary Grade

Lanier Society; Y. W. C. A.; Junior Cabinet;
C Class Student Government Representative;
House President, '32; Marshal.

AIELEEN SHELTON
Hamlet, N. C.

Primary Grade

NINA LOUISE SITTERSON
Rocky Mount, N. C.

Grammar Grade

Poe Society; Y. W. C. A.; Scribbler's Club.

MAMIE MARIE SMALL
Elizabeth City, N. C.

Primary Grade

Emerson Society; Y. W. C. A.; Albemarle District Club.

Senior Normal

BETTY SMITH
Gibson, N. C.

Primary Grade

Lanier Society, '31, '32; Glee Club, '31, '32;
Y. W. C. A. Choir, '31, '32; Athletic Association, '32.

KITTEE BLANCHE SMITH
Schma, N. C.

Primary Education

Lanier Society; Y. W. C. A.; Johnston County Club, '31, '32.

MARGUERITE SMITH
Warsaw, N. C.

Primary Grade

Emerson Society; Y. W. C. A.; Class Secretary, '32.

HAZEL SPEER
Winston-Salem, N. C.

Grammar Grade

Poe Society; Y. W. C. A.; Salem College, '29, '30.

FRANCES STOKES
Greenville, N. C.

Grammar Grade

Lanier Society.

VIRGINIA STRICKLAND
Nashville, N. C.

Grammar Grade

CHARLOTTE LOUISE STYRON
Norfolk, Va.

Primary Education

Emerson Society; Y. W. C. A.

KATHRYN SULLIVAN
Hamlet, N. C.

Primary Grade

Emerson Society, '31, '32; Athletic Association, '31, '32; Y. W. C. A.





Senior Normal

KATE KIRBY SUMMERLIN
Mount Olive, N. C.

Primary Grade

Lanier Society, '31, '32.

SUSIE KATE SWAIN
Shallotte, N. C.

Primary Grade

Poe Society; Y. W. C. A.; Athletic Association.

RUTH MACON TANKARD
Bath, N. C.

Grammar Grade

Emerson Society.

MILDRED TATUM
Elizabethtown, N. C.

Grammar Grade

Emerson Society.

ELSIE TAYLOR
Fairmont, N. C.

Primary Grade

Poe Society.

KATHERINE TAYLOR
Wilson, N. C.

Primary Grade

Y. W. C. A.

ANNIE SYDNE THOMPSON
Graham, N. C.

Primary Education

Emerson Society; Y. W. C. A.; Student Volunteer '31, '32; Glee Club, '31, '32; Circulation Manager *Teco Echo*, '32.

ELIZABETH THOMPSON
Graham, N. C.

Elementary Education

Emerson Society; Athletic Association, '31; Y. W. C. A.; Class Treasurer, '32; *Teco Echo* Reporter, '31; Associate Editor *Teco Echo*, '32; Student Volunteer, '31, '32; Student Volunteer Reporter, '32; Glee Club, '32; Proctor, '31.

Senior Normal

MARY PITTS TURLEY

Clayton, N. C.

Primary Grade

Y. W. C. A.; Athletic Association, '31, '32;
Lanier Society, '31, '32; Basketball, '31; Glee
Club, '31, '32; Johnston County Club, '31, '32.

HAZEL RUTH TURNAGE

Ayden, N. C.

Grammar Grade

Lanier Society; Y. W. C. A.; Athletic As-
sociation; Class Basketball Team.

LILLIAN TURNER

Tyner, N. C.

Primary Grade

MARGARET TYSON

Greenville, N. C.

Grammar Grade

MARY UNDERWOOD

Columbia, N. C.

Primary Education

Emerson Society; Y. W. C. A.; Junior Cabinet;
Secretary Junior Cabinet; Y. W. C. A. Cabinet,
'32; Albemarle District Club; Vice President Albe-
marle District Club, '31.

BLANCHE VAN DYKE

Henderson, N. C.

Grammar Grade

Y. W. C. A.; Athletic Association, '31; Lanier
Society, '30, '31; Proctor, '30; Student Volunteer
Group, '30, '31.

MAGGIE ELLEN VANN

Newton Grove, N. C.

Primary Grade

Poe Society; Athletic Association; Glee Club;
Y. W. C. A.

MIRIAM WALKER

Hillsboro, N. C.

Primary Grade





Senior Normal

ELIZABETH WALSTON
Shiloh, N. C.

Primary Grade

Poe Society.

MARIE WALTERS
Drum Hill, N. C.

Grammar Grade

Emerson Society.



LOLA TUNNEL WATSON
Swan Quarter, N. C.

Primary Grade

Emerson Society; Y. W. C. A.

MARY LOUISE WEBB
Pinetops, N. C.

Primary Grade

Emerson Society; Proctor Fall, '31; Athletic Association, '30



ELISE WEBSTER
Fairmont, N. C.

Primary Education

Poe Society; Y. W. C. A.

LOIS E. WELBORN
Winston-Salem, N. C.

Grammar Grade



VERONA WHITE
Bath, N. C.

Primary Grade

Emerson Society; Y. W. C. A.

MARGARET B. WILLIAMS
Bunn, N. C.

Grammar Grade

Lanier Society; Y. W. C. A.

Senior Normal

MARY FRANCES WILLIAMS

Elizabeth City, N. C.

Grammar Grade

Emerson Society; Glee Club; Albemarle Club;
Y. W. C. A.

RUTH EVELYN WILLIAMSON

Greenville, N. C.

Primary Education

Emerson Society.

CORINNE CHESTNUT WILLIS

Beaufort, N. C.

Primary Education

Poe Society; Y. W. C. A.; Proctor.

EDNA WILSON

Goldsboro, N. C.

Grammar Grade

Emerson Society; Athletic Association; Basket-
ball, Captain, '32; Tennis Champion, '31.

VARNEDA WOODARD

Kenly, N. C.

Primary Grade

Poe Society; Y. W. C. A.

MARGARET OLIVER WOODBURY

Wilmington, N. C.

Primary Education

Emerson Society; Y. W. C. A.; Vice President
Class, '31.

LUCILLE WOOLARD

Greenville, N. C.

Primary Grade

EUNICE MAY WYNNE

Kittrell, N. C.

Grammar Grade

Lanier Society.

CLAUDIE MAY WYNNE

Maysville, N. C.

Grammar Grade

Emerson Society; Y. W. C. A.; Athletic As-
sociation.



Senior Normal Class History

HOW vividly lingers the memory of a blue Monday, September 29, 1930, when a heterogeneous group of what seemed to be cast-offs migrated to the campus of East Carolina Teachers College. Two hundred and forty-three strong, we were ready to seek the hidden treasures of knowledge, truth, and honor. Though we were termed "green" and branded "green" we were on our way to show our superiors what we could do.

Two days of parties, teas, and "pep" meetings to familiarize us with the campus and faculty made us acquainted with those whom we thought "Queens of the campus"—upperclassmen. We soon, indeed, realized the importance and necessity of their lending us a friendly and helping hand.

"C's" we were called. Not knowing why, we took the term to mean Capability. We lost no time in getting started by electing Janet Gray as our leader.

Then there came the day we dreaded most—Initiation! What an attractive group we were—dressed in pajamas, gym hose, petticoats galore, and carrying laundry bags. In loyal fright we obeyed our friendly persecutors by "mcows" here, "baas" there, and "bow-wows" yonder.

Thanksgiving—and was it cold? Not too cold, however, for us to be victorious in the basketball game. "Champions" and "Cup winners" became our proud titles.

June! Books in, and trunks packed meant the close of a successful "C" year.

Day after day rolled by until once more we were on the campus with the ghosts of practice teaching, science, history, and mathematics haunting our pleasant dreams. Strange faces greeted us in the place of our dear friends, the Seniors of '31. We regretted our loss, but welcomed our new friends.

The charming and efficient Irma Dell Phillips was elected president of the Senior Normals of 1932.

Speaking of anticipations—well, we had them. Once more initiation was here. No one knows how excited we were, for then was the time for our revenge. (We weren't very bad to the "green" newcomers, after all.)

All our untiring efforts in basketball were in vain; we had to lose our treasured token, the cup. It was hard to bow down in defeat, but we graciously surrendered because we know we were outclassed. Our only consolation was the fact that we were soon to hear the Don Cossack Russian chorus.

Something from fairyland must have come since, for the first time in the history of the college, we were given Thanksgiving holidays. The dormitories were in an uproar the night before our departure for four days of family feasts, parties, and—sweethearting.

Not any too soon did those three weeks from Thanksgiving till Christmas pass. Alas! Exams haunted us night and day the final two days, but we were willing to pay their toll to start on the homeward journey.

The year of our graduation, 1932! There were "treats" on top of each other in store for us. Galli-Curci, the noted singer, the senior play, and other entertainments lay ahead. Who wouldn't enjoy college with such pleasures to look forward to?

We wish, in closing, to pay a grateful tribute to those who, during our college career, have patiently guided our footsteps to the realms of knowledge, who have treated our mistakes, and who have rejoiced in our successes. We have little to show now; we only trust time will reveal the lives inspired to the heights of honor and service.

Graduation bids us part—part from those whose friendship we cherish dearly. We depart reluctantly, yet hopefully, led by our motto, "Not sunset but dawn."

HAZEL RUTH TURNAGE,
ANNIE SUE HOWELL,
Historians.

“D” Class Last Will and Testament

STATE OF NORTH CAROLINA
COUNTY OF PITT
TOWN OF GREENVILLE

} EAST CAROLINA TEACHERS COLLEGE

WE the Senior Normal Class of Nineteen Hundred and Thirty-two, having survived two years of strenuous work, cruel initiations, and an intelligent faculty, believe ourselves to be of a sound mind and body. Realizing that the days are approaching with great rapidity; and realizing the inability of this class to carry with it their college possessions to distant realms, we do hereby make and declare our last Will and Testament:

One: We bequeath to our Alma Mater our love, esteem, and loyalty.

Two: To the faculty we bequeath the right to direct the incoming students of this college out of the depths of ignorance into the light of knowledge.

Three: To our Parents, who have been so patient and kind, as to have made it possible for us to be here, we devote our time and lives toward making ourselves worthy of their hardships and worries for us.

Four: We take great pleasure in leaving the Junior Normal Class:

1. All the rights and privileges of D's.
2. That never to be forgotten war path to the training school.
3. A supply of maps to make them come to the realization that North Carolina is not all dry land.
4. The privilege to sing as many times as they like that old familiar tune—
“Do, Me, So.”

(Seal)

IDELL BRITT,
BLANCHE VAN DYKE,
Testators.

Witnesses:

IRMA DELL PHILLIPS.
MARGUERITE SMITH.

Prophecy of the Senior Normal Class of '32

THIS is station WPTF, Raleigh, North Carolina, broadcasting over the NBC chain. We are now turning the program over to the Senior Normal class of East Carolina Teachers College of '32."

"This is Wilhelmina Livingston announcing. Irma Dell Phillips is in the studio and we will ask her to speak, Miss Phillips."

Irma Dell Phillips, WPTF: "Hello everybody! Don't you think it would be a good idea to call on every one and let each person speak for herself? We'll ask Marguerite Smith, who is here with me, to check the roll, which she has kept all these years, and see that every one is accounted for. I will speak for myself and several others. This morning I received a letter from Zouline Darden, who is teaching in the Philippine Islands teaching with Evelyn T. Jones, Evelyn Maynard, Millicent Harris, Dorothy Liverman, and Bertha Pritchard. This letter also came, and from a far off place—the jungles of Africa. I know you'll be surprised when I tell you that Mary Pitts Turley, Emily Chambliss, and Idell Britt are teaching the natives how to use make-up, and Lorina Price and Edna Earle O'Neal are exchanging dance steps with the Africans. All of these regret that they cannot be here. Lois Huffines wishes to hear from Rachel Monk."

Rachel Monk, XYZ: "I know that I haven't much time so I'll just tell you that I'm modeling dresses in Mary Catherine Morris's New York fashion shop. The other girls here are: Elizabeth Farmer, Margaret Clemmons, Margaret Woodbury, and Lena Cherry Alshbrook. I'm wondering where Nell Shaw is?"

Nell Shaw, WMO: "Margaret Regan, Joe Harrison, Elizabeth and Anne Thompson, and Sallie Sue Pittman are with me in my home here in Ontario, Canada. We are planning a trip to Greenville, North Carolina, soon. We would like to hear from Margaret Huff."

Margaret Huff, ABC: "I'm speaking from my home in Laguna Beach, California. I know I am the happiest person in the world here with my author husband and two little boys. It would be of interest to you to know that Mary Underwood and her newly acquired husband are spending part of their honeymoon with me. She told me that Mary Alice Bullock, Hazel Ruth Turnage, and Virginia Strickland, are prominent society leaders in Englewood, New Jersey. We are interested in Maxine Buchanan."

Maxine Buchanan, SAE: "I saw in the paper the other day that Ruth Ballentine has just married a prominent mayor, but I still contend that I am much happier being the wife of a famous football player. I also saw that Martha Cole and Howard Morning Brooks have almost completed their book on "Why College Deans Give up their Positions and why Student Councils Dissolve." But where is Helen McLauchlin?"

Helen McLauchlin, BAH: "Maxine, I certainly am glad to hear you. I've been here in England for the past six months and will be here until I have completed my latest book. Do any of you know where Maggie Ellen Vann is?"

Maggie Ellen Vann, TAT: "Helen, I am surprised that you haven't seen my picture in the new "Photoplay." Others of your classmates are there, too, Aileen Shelton, a second Greta Garbo; Betty Smith; De Ette Kinney; Mary Hunsucker; Doris Gurley; Blanche Smith; Mildred Bullock; Sally Bradley Pittman; Edna Flake; Sally Lou Finch; Mercer Dickens; and Maude Hicks. All are starring for Paramount. I know that these girls are in the follies: Merle Floyd, Hazel Spear, Annie Sue Howell, Rosa Lee Horten, Brownie Roberson, Glenda Dodge, Doris and Dorothy Hobgood, Margaret Lane, and Josephine Brantley—I wonder where Lillie May Britt is?"

Lillie May Britt, SPK: "I am running a beauty parlor in Raleigh, North Carolina. Pearl Packer, Lillian Selig, Margaret Edwards, and Marie Royster are my assistants. Yesterday Mozelle May, Mary Effie Patrick, Lucile Woolard, Elizabeth McCormack, Eloise Barco, Adelaide Henley, and Audrey Martin, who are teaching near here, came into the shop. Marcia and Marianna Helms were with them and said that Laureta Howard and Mary Hogan are doing critic work at E. C. T. C. Is Mary Lee on the air?"

Mary Lee, ATO: "Yes, I am here with Rebecca Lee, Katherine Sullivan, Janie McNair, Edna McDaniel, Vernelda Woodard, Corrine Willis, Edna Wilson, Della Ross, and Helen Reid doing home mission work in Mississippi. Eula Aycock, Opal Ercin, Nannie Barbee, Elsie Mae Drake, Ella Dill Gibbs, Martha Ella Abrams, Dora Beddard, and Pauline Boyette are missionaries in foreign fields. Every one knows that Blanch Van Dyke is in the Senate. I've heard that we have a number of classmates in Gastonia. Corva Herrington is coaching basketball; Lottie Bryan, Lena Hazel Hardy, and Hazel Fleming are teaching music and voice; Alma Braxton, Lois Lancaster, and Vera Hamilton are teaching in the primary grades; and Ruby Hobgood is principal of the Giraumar school there. Where is Eunice Boykin?"

Eunice Boykin, PKA: "Mary Alice Gooding, Hazel Hunter, Daisy Johnson, Mary L. Hart, and I are running a tea room in Hampton Roads where our sailor husbands are at sea. Daisy M. Belk, Breta Lewis, Geneva Hughes, Elsie Taylor, Mary Louise Webb, and Margaret Bell Williams are nursing at St. Luke's hospital in Richmond. They have many friends living there: Kate Kirby Summerlin, who married a very prominent lawyer; Elizabeth King, shopper for Miller-Rhodes; and Ava Crede, who is head of the millinery department there. Daisy Lee Lewis, who married a congressman is also living there. Let's see who is at station SNO in New York."

Station, SNO: "This is Ruth Tankard speaking. Frances Stokes, Lillian Turner, Edna Rouse, Hattie Powers, Etta Norwood, Claude Wynne and myself are governesses here in New York. Bertie Morgan, Adelle Morendy, Clara Nance, Rotha Murray, and Ruby Neighbors have a private kindergarten here, Mildred Costello is governess to Rosalie Murdocks children. Every one has been accounted for except Ellis and Violet Long, who, everyone knows, are studying for grand opera." (and it was just in time for)—

"This is John Roberts speaking over the NBC system. We are about to broadcast the correct time. When the gong sounds it will be exactly——.

MARY UNDERWOOD,
HOWARD MORNING BROOKS,
Prophetesses.



DOROTHY NELL HENDERSON AND ED HILLMAN
Junior Normal Class Mascots

COLORS: *Lavender and White*

FLOWER: *Sweet Pea*

MOTTO: *"Upward and Onward"*

C Class Poem

*Another "C" Class has started on its way,
 Heights of success to scale.
 We'll do what's right; we'll say what's right;
 We know we cannot fail.*

*Our watchword is "to serve our school,"
 It's standards we'll uphold.
 To make this year the best we've known—
 "Go forward" is our goal.*

*So Alma Mater, we're your friends,
 And fellow students too.
 On us you know you can depend
 For we're the "C" Class true.*

MELBA L. WATSON.



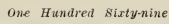
Junior Normal Class Officers

EDITH DILLARD.....	<i>President</i>
ANNIE MCINTYRE.....	<i>Vice President</i>
RACHEL MORGAN.....	<i>Secretary</i>
LUCY KELLY.....	<i>Treasurer</i>



Junior Normal Class Roll

THELMA IRLAND
MILDRED L. JERNIGAN
ANTIONETTE JONES
LOUISE JONES
EDITH KEMP
MARY LUCY KELLY
ELLA JOHNSON KINLAW
ELSIE KNIGHT
EDITH KRIDER
LAVERNA LANGSTON
HULA B. LEACH
GRACE LEE
RUBY LEE
MILDRED MANNING
RUBY MAY
MARGARET MEBANE
ANNIE LAURIE MELVIN
FRANCES MEWBORNE
MARY ARMA MONROE
ANNIE LORENE JONES
ELAINE RACHEL MORGAN
LEONA MORGAN
DORIS MORRIS
DELL MOYE
JESSIE MUNN
MARNETTE MURRAY
BEATRICE MCCOTTER
ANNIE MCINTYRE
HELEN MCCLAUCHLIN
RENNO MC LAUGHORN
LIZZIE LEE NELMS
INEZ OOLESBY
NANCY ORRELL
JENNIE N. OUTLAW
FRANCES OVERTON
THELMA PARKER
PATTEE MAE PATTERSON
ALICE PEACOCK



Junior Normal Class Roll

HAZEL BYRD PEARCE
MILDRED PEELE
ALICE LEIGH PELLITER
MARJORIE PERKINS
VASHTI PERRY
MARY FOY PETERSON
KITTYE S. PHILLIPS
JOY PICKARD
MARIE PINNELL
ESTELLE PITT
SARA BELLE PITT
REBECCA PITTMAN
FRANCES POLLOCK
MILDRED PORTER
RUBY PRICE
EDITH PULLEY
MARGARET REGAN
MAYDE REYNOLDS
MARY LENA RICE
NINA RIDDICK
KATHLEEN RIDDLE

MARGARETTE HOLT ROGERS
MILDRED ROSE
BONNIE RUSHEN
MARGARET RUSSELL
MARGARET SMITH
MATTIE RUTH SMITH
MILDRED SMITH
PAULINE SMITH
MARY SOUTHERLAND
MARY ROSS SQUIRES
RUBY STEPHENS
JANE STEWART
IRIS STOKES
PAT STOKES
MARGARET STRICKLAND
GRACE STRINGFIELD
SARAH TANKARD
HELEN TAYLOR
LELA MAE TAYLOR
MARTHA TEAL
ELSIE TILGHMAN

HELEN TURNAGE
FLORA TYNDALL
MABLE TYNDALL
LOIS WADELL
IDA WALKER
LOIS WALKER
MAMIE WATSON
MELBA WATSON
CELLA WESTON
AGNES WHITE
VIRGINIA WHITE
ETHEL WHITEHURST
MARGARET WHITEHURST
CLIO LOUISE WHILFIELD
ESTELLE WILLIAMS
LENORA WINSTEAD
HILDA WISE
NELLIE WISE
MAVIS WOMACK
FLORENCE WOODARD
FRANCES WOODBURY





BOOK THREE

ORGANIZATIONS

Student Government Association

OFFICERS

MILLIE MOORE.....	<i>President</i>
MILDRED IVES.....	<i>Vice President</i>
MARGARET MURCHISON.....	<i>Secretary</i>
RUTH PARKER.....	<i>Treasurer</i>
EVELYN ROGERS.....	<i>Chairman of Campus Committee</i>
CULLIE STAFFORD.....	<i>President of Y. W. C. A.</i>
ANNIE CLARA BAKER.....	<i>Senior Class Representative</i>
ELIZABETH BIDDLE.....	<i>Junior Class Representative</i>
HATTIE LEE HUMPHREY.....	<i>Sophomore Class Representative</i>
MILDRED HARRISON.....	<i>Freshman Class Representative</i>
MARY C. MORRIS.....	<i>Senior Normal Representative</i>
HULA B. LEACH.....	<i>Junior Normal Representative</i>
OLIVE PARKER.....	<i>House President, Cotten Hall</i>
ELLA MOORE.....	<i>House President, Cotten Hall</i>
LAURA EURE.....	<i>House President, Cotten Hall</i>
LOIS HUFFINES.....	<i>House President, Fleming Hall</i>
VIRGINIA WOODBURY.....	<i>House President, Fleming Hall</i>
EVELYN MAYNARD.....	<i>House President, Jarvis Hall</i>
SALLY B. PITTMAN.....	<i>House President, Jarvis Hall</i>
NELL SHAW.....	<i>House President, Wilson Hall</i>
EDNA McCULLEN.....	<i>House President, Wilson Hall</i>






MILLIE MOORE
Battleboro, N. C.
President of Student Government Association



Please, looking for a place
 of about 1000 to 1500 acres.
 if you have a good one, please
 send it out. Please
 write your name and
 address.






EVELYN MAYNARD



VIRGINIA WOODBURY



HULA B. LEACH



ANNIE CLARA BAKER



MARY C. MORRIS

*Alas! now just. Let
kind of date
same year and
month. I*



ELIZABETH BIDDLE



MILDRED HARRISON



EVELYN ROGERS

all over it



HATTIE LEE HUMPHREY



CULLIE STAFFORD



CULLIE STAFFORD
Mooreville, N. C.
President of Young Women's Christian Association

*I have not
 been to
 the
 since*



*Don't forget
 Mary*

Y. W. C. A. Cabinet

ETHEL PARKER.....	Vice President
FRANCES HARVEY.....	Secretary
VERA JENNINGS.....	Treasurer
ELIZABETH DENNY.....	Teco Echo Reporter
RACHEL McKEY }.....	Store Keepers
OLIVE GILBERT }	
MILLIE MOORE.....	Ex Officio
MARGUERITE LANE.....	Religious Education
JULIA FARRIOR.....	World Fellowship
BEATRICE STALLS.....	Morning Watch
ELIZABETH BIDDLE.....	Social
MARY BUFORD BEST.....	Social Service
DOROTHY SLOAN.....	Music
MARY UNDERWOOD.....	Publicity



STUDENT VOLUNTEER BAND

*I thought your is kept but
it is, we would like to see you too.
We'll be seeing you next year at next year Miss
Lillian, 1948*



JUNIOR CABINET

Just - I've
 enjoyed knowing you
 this year - (Please)
 remember me -
 Sincerely,
 James P. C.



GLEE CLUB



ORCHESTRA



Athletic Association

OFFICERS

HELEN WILLIAMS.....	<i>President</i>
OLIVE GILBERT.....	<i>Vice President</i>
IRIS FLYTHE.....	<i>Secretary</i>
BERTHA WALSTON.....	<i>Business Manager</i>
MARY SUE LANGSTER.....	<i>Tecoan Representative</i>
GRACE WILLIFORD.....	<i>Teco Echo Representative</i>

with, about
over it was
Court report
Linn with
enough to
lead "I was
we are good
of love.

A black and white photograph of a large group of young women, likely a cheerleading squad, posing in front of a building with classical columns. They are arranged in many rows, wearing light-colored uniforms. Some are holding large letters, including a prominent 'A' in a circle. The photo is oriented horizontally on the page.



HELEN WILLIAMS



OLIVE GILBERT



IRIS FLYTHE



BERTHA WALSTON



MARY S. LANGSTON



GRACE WILLIFORD



HAZEL R. TURNAGE

ATHLETIC BOARD



WEARERS OF MONOGRAM & STAR



Junior Basketball Team

WINNERS

Forwards

IRIS FLYTHE (Capt.)
BETH COOPER
VIVIAN COOKE

Guards

MARY SUE LANGSTER
BERTHA WALSTON
VERA BROUGHTON
MARY WALKER BROWN



Junior Normal Team

WINNERS

Forwards

FLORENCE SINCLAIR
ALICE HERRING
ANNETTA JONES
MARIA PANNEL

Guards

LOUISE RILEY (Capt.)
MAE HERNE
GRACE SHINGFIELD



SENIOR
BASKETBALL
TEAM

SOPHOMORE
BASKETBALL
TEAM



FRESH MAN
BASKETBALL
TEAM

SENIOR NORMAL
BASKETBALL
TEAM





ANNIE ROSAMOND HORNE--MILDRED DIXON
College Cheer Leaders





MILDRED DIXON



MELBA WATSON



KATHERINE WEATHERS
KATHERINE JONES



MARY ROSS SQUIRES



IRMA DELL PHILLIPS
LOIS HUFFINES

CHEER LEADERS

*I don't see
why you had
to move away
from me -
cause I love
you and think
you're one of the
sweetest, cutest
girls I've ever
seen M.R.S.*



JOHNSTON COUNTY CLUB



THE TECO ECHO

EAST LANSING, MICHIGAN COLLEGE

KRUTZBERG
TO APPEAR HERE

Whole Town's Talking"
To Be Given By Senior
ass February, 17 And 18

Dyn Smith, Is Coach

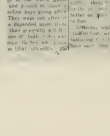


MAGGIE McPHERSON

EDITOR-IN-CHIEF

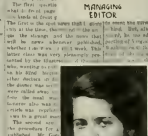


ESTELLE McCLEES
ASSOCIATE
EDITOR



Hundred Eight

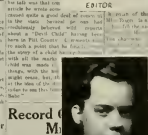
Carl Goerch Speaks To Scribblers Club
Large Group Attended Meeting Of Journalist

[illegible]

...the question of
taken up. Mr. Co
agrees to the post
to leave pencils and



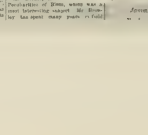
MARQUERITE LANE



Peculiarities of Subject

The Science Club sale is another Massachusetts Council of the State Museum, to

ELIZABETH THOMPSON
ASSOCIATE



Kreutzberg and Partners
To Present New D

Before E. C. T. C.
Speedy Cagers

The Whistle Sounded At
Close Of Last Quar-
ter With A Score
35-25

Charles Sang And
O'Neil

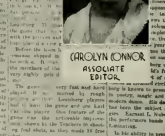
Excellent End

Louisburg W
Teachers Co
January

Famous Doctors Of
Social Medicine In
day, February

Large Crowd

thoug
in De
the
with
rich
with
society
society
society
society
society

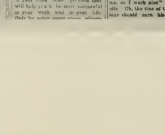


...brown feelings and use
...modern dance. K...

[illegible]

FACULTY

ADVISOR. What is great success the future? All that you wish will be so. Little more than a definite word phrase. You know, you accomplish life. As we think of it. If you give it your power, it is yours.



A black and white portrait of a woman with dark, wavy hair, looking directly at the camera. She has a serious expression. The background is dark and out of focus.



OFFICERS

TUCKER LYNCH.....	President
KATHERINE WEATHERS.....	Vice President
EMILY LANE.....	Secretary
EMILY CHAMBLISS.....	Treasurer



Lanier Society Song

Tune: "On the Mall"

*Let us sing a song of praise to our Society,
 Hail to thee, O Sidney Lanier!
 Loyal members ever proving your sobriety,
 Though our fun to us will e'er be dear.
 Then let us to our banner each a tribute pay—
 Let us ever our motto uphold,
 Always faithful, true, and loyal to thee, night and day.
 Hurrah for the Green and Gold!*



Emerson Society

OFFICERS

RACHEL McKEY.....	<i>President</i>
KATHERINE JOHNSON.....	<i>Vice President</i>
EVELYN ROGERS.....	<i>Secretary</i>
EVELYN MAYNARD.....	<i>Treasurer</i>



Emerson Society Song

Tune: "Clayton's Grand March"

*Oh, Emerson Society,
 Dear old White and Blue!
 For you our hearts beat merrily
 As we sing this song to you.
 For when we see our colors there,
 Blue and White, everywhere,
 We know that they mean only you,
 And all you hold so true.
 So here we are the Emersons,
 Boosting for our clan.
 Oh, Emerson! Oh, Emerson!
 For you we will always stand!*



Poe Society

OFFICERS

MARJORIE FLYTHE.....	<i>President</i>
SALLY BRADLEY PITTMAN.....	<i>Vice President</i>
LUCILLE NOEL.....	<i>Secretary</i>
NINA WALSTON.....	<i>Treasurer</i>



Poe Society Song

*Oh, Edgar! Oh, Edgar Allan!
 We are the Edgar Allan Poes.
 We are the society,
 Choice and picked variety.
 Oh, Edgar! Oh, Edgar Allan!
 We are the Edgar Allan Poes.
 March on!—March on!
 Beneath the red and white,
 For we will conquer all our foes,
 And we're sure to win in every fight.*

at 2
is happy
and along
love Wren



WRAE WARD
Hertford, N. C.
Chief Marshal Lanier Society

One Hundred Ninety-six



LORINE PRICE



ANNIE R. HORNE



TUCKER LYNCH



NELL SHAW



OLIVE PARKER

LANIER SOCIETY MARSHALS

Allen, what did
you have to say
from Wilson for
the miss you
love. Be good -
Frances.



FRANCES SWINDELL



FRANCES HARVEY



MARJORIE GRIFFIN



LENA CHERRY ALLSBROOK



VIRGINIA WOODBURY

EMERSON SOCIETY MARSHALS

Allen, I surely am for
you came to P.C.S.
I could not
love
with
you
to
the
end



CATHERINE HOLLAND



HATTIE DE HUMPHREY

1898 -
 Halliday



MARGARET RANKIN



WILHELMINA LIVINGSTON



LAURA EURE

POE SOCIETY MARSHALS



Phi Sigma

OFFICERS

MARJORIE GRIFFIN.....President

CATHERINE FLAUGHER.....Vice President

RUBY TAYLOR.....Secretary

*dear I'm glad your majoring in French and
wrote back the opportunity to read French for me. Deal
in the same class. I surely am glad you came
over to our hall 'cause you're a new neighbor.*



ELEMENTARY EDUCATIONAL COUNCIL



Mathematics Club

OFFICERS

ROSLYN SATTERWHITE.....	<i>President</i>
NELSON HUNSUCKER.....	<i>Vice President</i>
JESSIE GLYNN COLE.....	<i>Secretary-Treasurer</i>





Delta Omicron Sigma

OFFICERS

EULA BASS.....	<i>President</i>
ANNIE DELL UPCHURCH.....	<i>Vice President</i>
EVELYN ROGERS.....	<i>Secretary</i>
SARA JOHNSON.....	<i>Treasurer</i>
MISS KATHERINE HOLTZCLAW	{ <i>Advisers</i>
MRS. A. E. BLOXTON	





The Classical Club

INSIGNIA: *Caduceus of Hermes*

MOTTO: *Forsan et haec meminisse iuvabit*

OFFICERS

ELOISE HYDE
MARY L. TAYLOR
KEMP HOUSE

..... *President*
..... *Vice President*
..... *Secretary-Treasurer*

MEMBERS

DOROTHY SMITH
RUTH HOLLOWELL
ALEEN HUNT
LOUISE FOWLER

SUE SEWELL
NINA WALSTON
ELIZABETH CORSWELL
EDITH MORTON

KEMP HOUSE
ELOISE HYDE
MARY L. TAYLOR
RACHEL MCKEY

MISS ELLA GRAVES THOMPSON (Faculty Member)



Inter-Society Committee

OFFICERS

EMILY LANE, Lanier Society.....*Chairman*
 ELIZABETH DENNY, Lanier Society.....*Secretary*

FACULTY MEMBERS

MISS CHARLTON.....Lanier Society	MR. HOLLAR.....Emerson Society
DR. SLAY.....Lanier Society	MR. FLANAGAN.....Poe Society
MR. PICKLESIMER....Emerson Society	DR. MEADOWS.....Poe Society

STUDENT MEMBERS

TUCKER LYNCH...Pres. Lanier Society	VIRGINIA WOODBURY..Emerson Society
EMILY LANE.....Lanier Society	MARY L. PIPKIN....Emerson Society
ELIZABETH DENNY.....Lanier Society	MARJORIE FLYTHE...Pres. Poe Society
ELIZABETH BIDDLE....Lanier Society	LAURA EURE.....Poe Society
RACHEL McKEY.Pres. Emerson Society	DOROTHY WILKINS.....Poe Society



CO-ED CLUB



CO-ED BASKETBALL TEAM

*When I have
enjoyed having
a big team
I have been
in a big way
in the world
of sports
I have been
a big part
of it*



POE CHEERIO CLUB



RAZZBERRIES



Scribblers' Club

OFFICERS

BERTHA WALSTON President
ELIZABETH DENNY Vice President
GRACE WILLIFORD Secretary-Treasurer
WILLA MITCHELL DICKEY Teco Echo Reporter
MISS GRISBY Adviser

MEMBERS

HELEN BABCOCK
 MARY E. BAKER
 ELLEN BAKER
 FRANCES BENTON
 STELLA BLEVINS
 CAROLYN CONNER
 MARILYN CULBRETH
 ELIZABETH DENNY
 WILLA MITCHELL DICKEY
 LOIS GRISBY
 ORA HAMMOND
 BESSIE HANCOCK
 ELIZABETH HEYWOOD

MYRTIE GRAY HODGES
 SARA JOHNSON
 MARGUERITE LANE
 RUBY MAY
 ESTELLE MCCLEES
 BERTHA MCKINNEY
 RACHEL MONK
 CLYDE MORTON
 ETHEL PARKER
 MARY G. PARKER
 EDNA PEELE
 MARY LYNN PIPKIN
 LUCILE ROSE

ROSLYN SATTERWHITE
 LOUISE SHARPE
 LOUISE SITTERSON
 HELEN TAYLOR
 ANNE THOMPSON
 ELIZABETH THOMPSON
 ERIC TUCKER
 MARGARET WALTERS
 BERTHA WALSTON
 NINA WALSTON
 EMMA LEE WILKERSON
 GEORGE WILKERSON
 IVEY WOOD



Science Club

OFFICERS

HENRY OGLESBY.....	<i>President</i>
IRIS FLYTHE.....	<i>Vice President</i>
ZELLE FOLEY.....	<i>Secretary</i>
LILLIAN BROWN.....	<i>Treasurer</i>

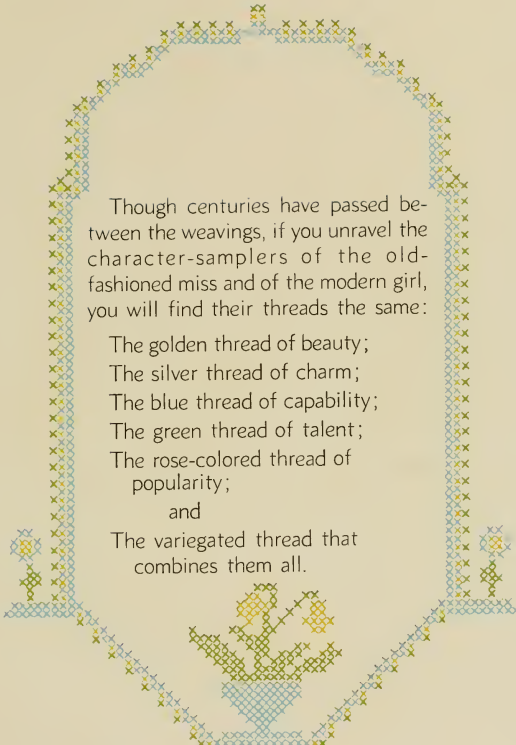






BOOK FOUR

FEATURES



Though centuries have passed between the weavings, if you unravel the character-samplers of the old-fashioned miss and of the modern girl, you will find their threads the same:

The golden thread of beauty;
The silver thread of charm;
The blue thread of capability;
The green thread of talent;
The rose-colored thread of popularity;

and

The variegated thread that combines them all.



RUTH HOOD—*Beauty*



IRMA DELL PHILLIPS—*Charm*



EDNA EARLE O'NEAL—*Talent*



MILDRED IVES—*Capability*



CULLIE STAFFORD—Representative



ANNIE ROSAMOND HORNE—*Popularity*



ZOULINE DARDEN—*Beauty*



MAXINE BUCHANAN—*Charm*



EVELYN MAYNARD—*Talent*



EVELYN WRIGHT—*Capability*



MARGARET MURCHISON—*Representative*



TUCKER LYNCH—*Popularity*

The evening dresses pictured in the feature section were provided through the courtesy of The C. Heber Forbes Company. The staff and the student body wish to express their thanks for the interest and generosity shown by the management of Forbes, both at this time and on many other occasions.

Don't Stop Here
There's More Yet

Hello Allen;
I have enjoyed
knowing you
+ C.C.T.C.
Blecher & Langford



COBURN SHOE
COMPANY

"Your Shoe Store"

Real College Styles
Combined with Quality
and Comfort

*Ask Your Friends About
Our Shoes
They Know*

Ladies'
Ready-to-Wear
and Millinery

*We Show the
New Things First*

C. Heber Forbes
Greenville, N. C.

W. L. BEST
Official College Jeweler
Established 1901

POE PINS
LANIER PINS
PHI EPSILON PINS
EMERSON PINS
GLEE CLUB PINS
COLLEGE SEALS
GUARDS

Special Prices to College Girls

WATCH REPAIRING
JEWELRY REPAIRING
ENGRAVING

We Sell "Divided Pay Plan"

J. C. Penney Co., Inc.

Greenville, N. C.

*Low Prices Here That
Every Value-wise Shopper
Will Appreciate*

Ready-to-Wear
Shoes and
Hosiery

Dr. Frank: Did you ever hear of Wilson?

Student: No.

Dr. Frank: Taft?

Student: No.

Dr. Frank: Cleveland?

Student: Is his last name Ohio?

Young America's aim is now—"Life, Liberty, and the Pursuit of Snappiness."

A MATTER OF METHOD

Sympathetic Senior: I wouldn't cry like that.

Homesick Freshman: Cry as you please, this is my own way.

Co-eds strolling leisurely up hill say:

"Shucks, why hurry? Be late and give the girls a thrill with a grand stand entrance."

"The only way to get rid of a temptation is to yield to it."—*Oscar Wilde*.

Mamma: Susie, go and wash your face and neck.

Susie: Neck who, mother?

Bob: See that girl? Her face is her fortune.

Bill: Yeah, and it runs into a nice figure.

"Der's jess two folks dat kin sleep sound. Dem wif a clear conscience an' de folks wif none at all."

"A Highbrow is one whose learning has outstripped his intelligence."—*Vincent Massey*.

"O I'm seventeen when I'm sunny,
And I'm seventy when I'm sad;
So I'm forty when I'm sensible,
But I'm nothing when I'm mad."—*Anon*.

"How far have you studied, Johnny?" inquired the teacher.

"Just as far as the book is dirty."

Proud Papa: Don't you think it's about time the baby learned to say "papa"?

Mother: Oh, no I hadn't intended telling him who you are until he grows stronger.

Officer: Hey! where do you think you are going?

Driver: Be easy on me, officer. This is the first time I haven't had my wife along to tell me.

"I'm glad I'm not a snake."

"Why so?"

"When he has a stomach ache, how's he to know whether it's a stiff neck or a sore tail?"

YOUNG'S

*For the Newest Styles in
Dresses*

Specially Priced

We Always Get the Newest Novel-
ties in Oxfords and Pumps
First

*Our Silk Hosiery is the Best
Obtainable*

Extra Good Heavy Silk Hose,
Triple Seam, Full Fashioned
Pointed Heel

All Colors, \$1.39

Corner Dickerson Avenue and
Greene Street

Drink

Coca-Cola

In Bottles

The Perkins Company

*Ladies' Ready-to-Wear and
Shoes at Popular Prices*

419 Evans Street
Greenville, North Carolina

LOWE'S

Exclusive Millinery

Greenville, N. C.

Greenville Floral Company

"Say It With Flowers"

BLOOMING PLANTS
WEDDING BOUQUETS
CORSAGES
FUNERAL DESIGNS

The Home of Flowers

Phone 443-W

Griffin Shoe Co., Inc.

"Smart Footwear"

Only Exclusive Ladies' Shoe Store
in Eastern Carolina



=====

BLOOM'S

Smart Women's Wear

Official
College Clothier

Greenville, N. C.

=====

Lautares Candy
Palace

Quality — Service

Complete Line of
TOILET ARTICLES
EASTMAN KODAKS
CONKLIN LIFE-TIME
FOUNTAIN PENS
PURE ICE CREAM

*Our Soda Fountain is one of the
Most Up-to-date in the State*

Including Hot Water Service
Service and Quality

LAUTARES CANDY
PALACE

TRADE AT HOME

We Have It Right in the College Store

High Grade Stationery
Pillow Tops and Pennants
Kodak Films

ALSO A COMPLETE LINE OF CLASSROOM SUPPLIES
AT A SAVING TO YOU

Open
7:45 to 8:20 a.m. 1:20 to 3:30 p.m.
6:20 to 7:30 p.m.

College Stationery Store



The Rouse Printery

Quality Printing

Greenville, N. C.

McLellans Stores Co.

The Home of Satisfied Customers

5c to \$1.00

Let this be your shopping center

Vandyke Furniture Co.

*"Happy Home
Furniture Co."*

Phone 542

Renfrew Printing Co.

Printers and Stationers

Evans Street

Opposite Proctor Hotel

White's

Dependable Merchandise

Greenville, N. C.

Shop and Compare

*Charles's Prices Are Lower
for
Dependable Merchandise*

WE INVITE YOUR PATRONAGE

CHARLES STORE COMPANY

"Reliable Goods at Low Prices"

406 Evans Street

GREENVILLE, N. C.

The Girl Grows Older—

Cutting teeth

Cutting up

Cutting classes

And cutting switches.

A man fell from a hotel roof,

And from each window bar

He shouted to his friends above

"I am all right so far."

THE ITINGERS

Hey! Ain't we
 got fun sleepin' & havin'
 tennis racket and beat
 coming back and maybe!
 you good! - Kate Hunter.



*The One Gift That
Only You Can
Give—*

Your Photograph

BAKERS STUDIO

*Showing at All Times the
Latest Creations in
Ready-to-Wear
Dry Goods, Notions
and Accessories*

Agents for such well known
lines as

HUMMING BIRD HOSIERY
WARNER'S FOUNDATION
GARMENTS
VAN RAALTE UNDERWEAR

Our Slogan:

"Quality Merchandise at Right Prices"

McKay, Washington
Company

"The Ladies' Store"

FOLLOWING THE RULES OF SAFETY

This bank is strong today because for years we have followed the rules of safety.

We have never permitted ourselves to go anywhere near the danger line. In our loans and investments particularly, we have exercised the most extreme care in order to protect our depositors.

Our reserves have been kept strong and we have maintained a high ratio of cashable assets. We have devoted our resources generously to the support of local enterprise and have put forth our best efforts for the benefit of home people. Because of our strong financial position we have been able to give proper support and encouragement to our depositors throughout the whole of a difficult period.

THE GREENVILLE BANKING & TRUST CO.

Depository for U. S. Postal Savings

all-o' Alabama
Maybe you
didn't know it or
you but anyway I
surely have enjoyed
knowing you and hope
on boat I got Margaret Rose

Margaret: Don't the basketball players ever wash their suits?

Pete: Sure, what do you think the scrub team is for?

"Words foil me" said the girl as she flunked the test.

Miss Cassidy: What is a parasite, Miss Babcock?

Helen Babcock: It is something that you jump out of an aeroplane in.

She: Is there any art in kissing?

He: None except, "Art thou willing?"

"He who flunks and still is gay
Will live to flunk another day."

Wire to Father: Where is the money I wrote for last week?

Answer: In my inside vest pocket.

A.: I want something to wear around the dormitory.

Salesgirl: How large is your dormitory?

Willie: Pa sent me for a piece of rope like this.

Hardware Dealer: How much does he want?

Willie: Just enough to reach from the goat to the fence.

MATHEMATICS

A dusky son of Alabama was busily engaged in a bedbug hunt. When asked by a sergeant what he was doing, he replied.

"I'se hunting for dem 'rithmetic bugs."

"Why do you call them arithmetic bugs?"

"Cause dey adds to ma misery, dey subtracts from my pleasure, dey divides ma attention and dey multiplies like hell."

DUMBNESS OF THE PRESENT GENERATION

A superintendent once went to a country school to inspect the progress that had been made. In a casual manner he remarked to the teacher that the children of the present generation were dumb compared to those when he was growing up. The teacher failed to grasp his meaning.

To make his point more clear he called on a little boy to give a number. The kid hollered out "67" and the superintendent wrote "76" on the board. He then called on a second boy. This time the number was "92" and "29" was written on the board. Still there was no comment. While further attempting to explain his point, the superintendent spied a freckle-face, red-headed, fidgety little boy. The boy was Tim O'Brien, who talked on the end of his tongue. In an abrupt manner the superintendent said, "Well, Tim, son, you give me a number." The reply came, "Theventy-theven, you darn fool, thee if you ean thurn that around."

She: Why are you always behind in your studies?

Co-ed: Because if I were not behind, I could not pursue them.

Sign seen over country store: "China ware, Hardware, and Underware."

Marriage is a tragedy in one act. Many scenes follow.

Autographs

Autographs

[illegible]

Handwritten notes on the right margin of the page:

Handwritten notes on the right margin of the page:

Handwritten notes on the right margin of the page:

There is a girl! a girl who is
young, fine, and beautiful.

10. 11. 1918

in the - - - - -

The first year was very -
unpleasant.

[Faint handwritten notes at the bottom of the page]

remember that
going to court?
and back to you, Alan
and Emma
Sells, Md.

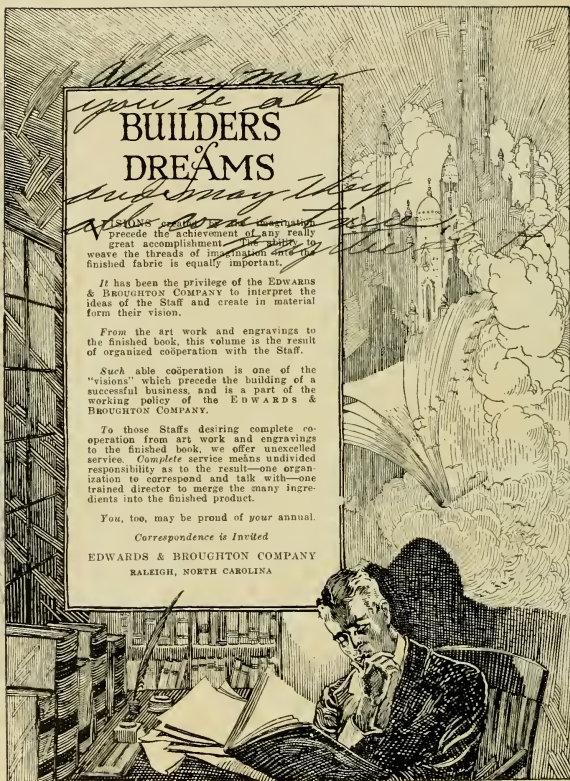
Alan,
H. W. Sells,
Emma Sells,
Sells, Md.

Autographs

Dear Alan,
I have enjoyed ~~knowing~~
with you this year and
am looking forward to
next. Even if we can't be in
Wilson Hall we have a
nice room, if we don't freeze
so we won't mind. Be good
this summer and don't
forget to come back early.
Love,
Margaret

Autographs

Dear Allen,
I hope all the love and
kindness of wishes, especially
in the winter.



When may you be a
BUILDERS
and may they
DREAMS
of the future

VISIONS and DREAMS precede the achievement of any really great accomplishment. The ability to weave the threads of imagination into the finished fabric is equally important.

It has been the privilege of the EDWARDS & BROUGHTON COMPANY to interpret the ideas of the Staff and create in material form their vision.

From the art work and engravings to the finished book, this volume is the result of organized coöperation with the Staff.

Such able coöperation is one of the "visions" which precede the building of a successful business, and is a part of the working policy of the EDWARDS & BROUGHTON COMPANY.

To those Staffs desiring complete coöperation from art work and engravings to the finished book, we offer unexcelled service. Complete service means undivided responsibility as to the result—one organization to correspond and talk with—one trained director to merge the many ingredients into the finished product.

You, too, may be proud of your annual.

Correspondence is Invited

EDWARDS & BROUGHTON COMPANY
RALEIGH, NORTH CAROLINA

