


TECOAN

1926





Digitized by the Internet Archive
in 2010 with funding from
University of North Carolina at Chapel Hill

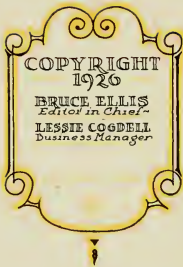
<http://www.archive.org/details/tecoan1926east>

PRESS OF
THE OBSERVER PRINTING HOUSE, INC.
CHARLOTTE, N. C.



EX-LIBRIS





COPYRIGHT
1926

BRUCE ELLIS
Editor in Chief-

LESSIE COGDELL
Business Manager

The TECOAN

NINETEEN HUNDRED AND TWENTY-SIX

Volume Four



Published by the Students of
EAST CAROLINA TEACHERS COLLEGE
GREENVILLE, NORTH CAROLINA



FOREWORD

WE PRESENT TO YOU THIS, THE FOURTH VOLUME OF *THE TECOAN*, SINCERELY HOPING THAT IT WILL MEET WITH YOUR APPROVAL. WE HAVE TRIED TO MAKE IT A TRUE REPRESENTATION OF OUR COLLEGE, FACULTY, AND STUDENTS. OUR GOAL HAS NOT BEEN ATTAINED; BUT, IF WE HAVE NEARED IT, WE SHALL BE EXCEEDINGLY GLAD.



TO
HERBERT E. AUSTIN
OUR FRIEND AND TEACHER
WE DEDICATE THIS BOOK

ORDER of BOOKS

BOOK I
THE COLLEGE

BOOK II
THE CLASSES

BOOK III
ORGANIZATIONS AND
CLUBS

BOOK IV
STATISTICS AND
FEATURES

BOOK V
POTPOURRI





BOOK ONE

The College



ROBERT H. WRIGHT
President

OFFICERS OF ADMINISTRATION

ROBERT H. WRIGHT	<i>President</i>
ANNIE V. MORTON	<i>Lady Principal</i>
MITTIE R. BEAMAN	<i>Assistant to Lady Principal</i>
CHARLES O'H. LAUGHINGHOUSE	<i>Physician</i>
MARY E. CULP	<i>Superintendent of Infirmary</i>
OLA S. ROSS	<i>Registrar</i>
REBECCA EDMONDS	<i>Secretary</i>
MATTIE SCOVILLE	<i>Secretary</i>
BEULAH WESTMORELAND	<i>Secretary</i>
J. B. SPILMAN	<i>Treasurer</i>
MRS. J. B. SPILMAN	<i>Assistant Treasurer</i>
MRS. NANNIE F. JETER	<i>Matron</i>
NELL KEEL	<i>Assistant Matron</i>
ARLEY MOORE	<i>Dormitory Matron</i>
LEON R. MEADOWS	<i>Director of Summer Term</i>
M. L. WRIGHT	<i>Executive Secretary</i>
HELEN G. GRAY	<i>Librarian</i>
O. C. HOLMES	<i>Chief Engineer</i>
WADE HOLMES	<i>Assistant Engineer</i>
A. C. FORNES	<i>Superintendent of Grounds and Buildings</i>
MRS. F. A. HASKINS	<i>Superintendent of Laundry</i>
J. S. WILLIAMS	<i>Campus Policeman</i>



BOARD OF TRUSTEES

A. T. ALLEN, <i>Chairman Ex-Officio</i>	Raleigh, N. C.
MRS. H. G. CONNOR, JR.	Wilson, N. C.
F. C. HARDING	Greenville, N. C.
L. W. TUCKER	Greenville, N. C.
F. C. KUGLER	Washington, N. C.
HENRY C. BRIDGERS	Tarboro, N. C.
D. S. BOYKIN	Wilson, N. C.
J. S. HARGETT	Trenton, N. C.
JAMES L. GRIFFIN	Pittsboro, N. C.



ANNIE V. MORTON
Lady Principal



THE WILSON MEMORIAL

On the campus stands a pure white pergola, erected by the Alumnae as a perpetual reminder of the life of service of Professor C. W. Wilson. It is fitting that the memorial to him should be placed on the west campus opposite his house, where from his porch he loved to watch the girls enjoy the campus. May this not only be a happy meeting place for the girls, but may it keep alive the influence he exerted while at the College.



*"Not only around our infancy
Doth heaven with all its splendors lie."*



*"Lord, I do fear
Thou'st made the world too beautiful this year."*



*"O beauty manifold, from morn till night,
Dawn's flush, moon's blaze, and sunset's tender light."*



*"Still there's a sense of blossoms yet unborn
In the sweet airs of morn."*



*"Again rejoicing, Nature sees
Her robe assume its vernal hue."*



*"I'd rather be thy child
And pupil, in the forest wild,
Than be the queen of men elsewhere."*



"Here is the place where Loveliness keeps house."



*"So might I, standing on this pleasant led,
Have glimpses that would make me less forlorn."*



"The groves were God's first temples."



*"The forest is my loyal friend;
Like God it useth me."*



FACULTY



LEON R. MEADOWS
English

HERBERT E. AUSTIN
Geography

KATE W. LEWIS
Industrial Art

MARY JANE ALEXANDER
Physical Education

MAUDE MANUELL HALL
English

MARY G. BERTOLET
Piano

MAMIE E. JENKINS
English

AGNES L. WHITESIDE
Primary Education

FACULTY

A. D. FRANK

History

MRS. A. D. FRANK

Home Economics

DORA E. MEAD

Piano

DOROTHY CHAMBERLAIN

Industrial Art

MRS. R. L. CARR

Home Economics

J. BEECHER FLANAGAN

History

CYRIL L. ADAMS

Psychology

LAURA ROSE

History



FACULTY



R. J. SLAY
Science

MARY GLENN LLOYD
French

LOIS V. GORRELL
Piano

R. C. DEAL
French and Latin

BIRDIE MCKINNEY
Mathematics

KATIE KING
Critic Teacher, Science

R. G. FITZGERALD
School Management

IRENE HAND
Critic Teacher, English

FACULTY

HUBERT C. HAYNES

Education

E. L. HENDERSON

Director of Practice Schools

MARJORIE HASTINGS

Critic Teacher, Mathematics

LOUISE GOGGIN

Critic Teacher, Seventh Grade

RACHEL SCARBOROUGH

Critic Teacher, History

KATHERINE BRADFORD

Critic Teacher, Seventh Grade

J. H. ROSE

Supervisor of Practice

FRANCES WAHL

Critic Teacher, Sixth Grade



FACULTY



FANNIE MCCLELLAND
Critic Teacher, Fifth Grade

BESSIE WORLEY
Critic Teacher, Third Grade

BONNIE HOWARD
Critic Teacher, Fourth Grade

RUTH HILLHOUSE
Critic Teacher, Second Grade

GLADYS BORDEAUX
Critic Teacher, Fourth Grade

GRACE HUNTER
Critic Teacher, Second Grade

RUTH TOWNSEND
Critic Teacher, Third Grade

ANNIE REDWINE
Critic Teacher, First Grade

FACULTY

DORA E. COATES

Critic Teacher, First Grade

ALICE V. WILSON

Science

BETTY WHITE

Science

GLADYS MOORE

Critic Teacher, Latin

THELMA SHAMHART

Critic Teacher, Seventh Grade

JENNIE D. EVANS

Critic Teacher, First Grade

GUSSIE KUYKENDALL

Public School Music

EMMA L. HOOPER

English

SALLIE J. DAVIS

History

MARIA D. GRAHAM

Mathematics

MARY CARTER TATUM

Home Economics



OFFICERS OF
ADMINISTRATION



M. L. WRIGHT
Executive Secretary

HELEN G. GRAY
Librarian

MRS. J. B. SPILMAN
Assistant Treasurer

OLA S. ROSS
Registrar

MARY E. CULP
Superintendent of Infirmary

BEULAH WESTMORELAND
Secretary

REBECCA EDMONDS
Secretary

MRS. NANNIE F. JETER
Matron

OFFICERS OF ADMINISTRATION

NELL KEEL

Assistant Matron

MITTIE R. BEAMAN

Assistant to Lady Principal

ARLEY MOORE

Dormitory Matron

MATTIE SCOVILLE

Secretary

J. B. SPILMAN

Treasurer



THE FOOL HATH SAID—

"The fool hath said in his heart,
there is no God."
And yet—they forget
In the spring,
That the primroses pushing their
way through the sod
Tell of God.
They forget
How the sight
Of the white
Of a dogwood in bloom
Made them glad.
They seem not to know
Of the breezes which blow
The white cap of every green wave:
Of the note
In the throat
Of the wild birds that sing
In the spring.
They seem to forget
That the gold
In the hair of a child—
That the fold
In the red velvet of a rose
Is a sign.
And then, when again
Comes the strain
Of music which mothers have sung
Do they sigh
When the old lullaby
Is begun?
Do they know
Of the love
Which exists between maiden and man?
Can they tell
How the touch of a baby's warm cheek
Made them think
As nothing else can?
Is it so
That they go
Through the world
Never seeing the hand
Of a Great Omnipotent Being?
Do they see
Without thinking,
The primroses pushing their way
through the sod?
And yet—
"The fool hath said in his heart,
there is no God."

—BESSIE WILLIS, '28.



BOOK TWO

The Classes

SENIORS



M. Seagroves



MARJORIE SPIVEY
Sponsor of Senior Class

COLORS: *Scarlet and Gold*

FLOWER: *Rose*

SLOGAN: *"Launched, but Not Anchored"*



JANIE JACKSON
President of Senior Class



LESSIE COGDELL, A. B.

GOLDSBORO, N. C.

Poe

Treasurer of Student Government Association, '24; Science Club, '24; Representative of Class, '25; Phi Epsilon, '25, '26; Chairman of Point Committee, '25; Hiking Club, '25; Business Manager of THE TECOAN, '26; Secretary of Budget Committee of S. G. A., '26; Mathematics Club, '26; Senior Play, '26; Class Testatrix, '26; Class Critic, '26; *Teco Echo* Reporter, '26; Proctor, '26; President of Mathematics Club, '26.

TECOAN 1926

SALLIE CHEEK, A. B.

OCRACOKE, N. C.

Poe

Wee Gee Club, '24; Delegate to Blue Ridge, '24; T. W. O. M. Club, '25; Y. W. C. A. Cabinet, '25; Delegate to S. V. Conference at Chapel Hill, '25; Delegate to World Court Conference, Duke University, '26; Phi Sigma, '25, '26; President of Hyde County Club, '26; President of Y. W. C. A., '26.



ISABELLA CROMARTIE, *A. B.*

GARLAND, N. C.

Poe

Class Sergeant-at-Arms, '23; Vice-President of Class, '25; Senior Play.



TECOAN

1926



KATHLEEN MOYE DAIL, *A. B.*

LAGRANGE, N. C.

Lanier

Class Representative to Student Government, '23; Chairman of Publicity of the Y. W. C. A., '25; Vice-President of Lenoir County Club, '26; Vice-President of Student Government Association, '26; Vice-President of Class, '26; President of Lenoir County Club, '26; Phi Sigma.



ANNIE DOZIER, *A. B.*

SHILOH, N. C.

Poc

President Camden County Club, '26;
President Pals Club, '26; Chairman Ar-
rangement Committee of Poe Society.

TECOAN 1926

ANNIE MAE EDWARDS, *A. B.*

GREENVILLE, N. C.

Lanier

Phi Epsilon; Class Treasurer, '24;
Pitt County Club; Senior Play.



BRUCE ELLIS, *A. B.*

WINTERVILLE, N. C.

Lanier

Secretary of Class, '25; Vice-President *La Societe Francaise*, '24; Class Editor, '25; Editor-in-Chief of *THE TECOAN*, '26; Secretary of Phi Sigma, '26; Senior Play, '26; Wittiest, '26.



TECOAN 1926



BLANCHE EVANS, *A. B.*

GREENVILLE, N. C.

Poe

Basketball, '24, '25; Most Accommodating in Class, '24; Most Athletic in Class, '26.



BRUCE EXUM, A. B.
GREENVILLE, N. C.

Lanier

TECOAN 1926

DEANIE BOONE HASKETT, A. B.
GREENVILLE, N. C.

Poe

Phi Epsilon; Phi Sigma; Pitt County
Club; Class Treasurer, '25; Treasurer
of Phi Sigma, '25; Editor-in-Chief of
Teco Echo, '26.



BEULAH HAYNES, A. B.
NORTH WILKESBORO, N. C.

Poe

Assistant to Librarian, '26.



WILKESBORO 1926



ESTELLE ISLES, A. B.
THELMA, N. C.

Poe

Class Secretary, '24.



JANIE JACKSON, *A. B.*

GREENVILLE, N. C.

Poe

Class Cheer Leader, '23; Vice-President of Class, '24; President Phi Epsilon, '25, '26; Member of Budget Committee of S. G. A., '26; Class President, '26; Member of Mathematics Club, '26; Pitt County Club, '24, '25, '26.

TECOAN 1926

MAUDE JOHNSTON, *A. B.*

GREENVILLE, N. C.

Lanier

Class Secretary, '23; Lanier President, '25; Member of Inter-Society Committee, '25; Class Treasurer, '26.



RACHEL LEE, *A. B.*

DUNN, N. C.

Poe

Cheer Leader of "C" Class, '23; Poe Orator, '23; Y. W. C. A. Choir, '22, '26; Treasurer of Poe Society, '24; Quartet, '24, '26; Delegate to Student Volunteers' Conference at Queens, '24; Carolina, '25; Meredith, '25; Glee Club, '25, '26; Assistant Class Cheer Leader, '26; Teacher of Mission Study Class, '26; Most Talkative, '26.



TECOAN 1926



MARY LOWDER, *A. B.*

RUTHERFORD COLLEGE, N. C.

Lanier



MARY SHELTON McARTHUR, *A. B.*
CLINTON, N. C.

Poe

Representative to Student Council, '22; President Sophomore Class, '23; Presidents Club, '23; President Junior Class, '25; Assistant Editor of *Teco Echo*, '26.

TECOAN 1926

MUSETTE LATNEY MONTAGUE, *A. B.*
ROXBORO, N. C.

Poe

Business Manager of Athletic Association, '24; Reporter of *Poe Society*, '26; Vice-President of Phi Sigma, '26.



BERTHA L. PILAND, *A. B.*

OAK CITY, N. C.

Lanier

U. D. C. Scholarship, '26; Senior
Play.



TECOAN 1926



MACY SILER, *A. B.*

MORRISVILLE, N. C.

Poe

Phi Epsilon, '26; President Wake
County Club, '26.



FRANCES RINGOLD SMITH, A. B.
GREENVILLE, N. C.

Lanier

Business Manager of *Teco Echo*, '26;
President of Mathematics Club, '26; Pitt
County Club, '25, '26; Secretary of
Class, '26.

TECOAN 1926

MARGARET SMITH, A. B.
ELIZABETHTOWN, N. C.

Lanier

TECOAN Representative, '24; Class
Secretary, '24; Secretary of S. G. A., '25.



ELIZABETH THOMAS, *A. B.*

PITTSBORO, N. C.

Poe

Class Critic, '23; Chairman of Y. W. C. A. Choir, '24, '25; Glee Club, '25, '26; Inter-Society Committee, '26; Assistant Business Manager of *Teco Echo*, '26; Class Historian, '26; Senior Play.



TECOAN 1926



CHRISTINE VICK, *A. B.*

WOODLAND, N. C.

Lanier

S. G. A. Representative, '23; Associate Editor of *THE TECOAN*, '23; Delegate to Blue Ridge, '23; Tennis Team, '23; Class President, '24; Y. W. Cabinet; U. R. Delegate to National Y. W. Convention, New York; Captain Basketball Team, '24; Y. W. President, '25; Lanier Critic, '25; S. G. Council, '25; Delegate Baptist Student Convention, '25; President Phi Sigma, '25; S. G. A. President, '26; Chairman Inter-Society Committee, '26; Chairman Budget Committee, '26; Best All-Round, '26; Northampton County Club.



HELEN THERESA VINIARSKI, *A. B.*
ASHEVILLE, N. C.

Poe

Class Editor, '23, '24, '26; Proctor, '23, '24; President of C. C. Club, '24; Class Cheer Leader, '26; Most Talented, '26; Senior Play; Sergeant-at-Arms of Phi Epsilon, '26; Tennis Team, '25.

THE TECOAN 1926

JENNETTE WEDMORE, *A. B.*
NEW HAVEN, CONN.

Lanier

Class Treasurer, '23; Glee Club, '23, '24; Phi Sigma, '24, '25, '26; President H. M. S. S. Club, '24; Director of College Orchestra, '24; Associate Editor of THE TECOAN, '24; Cheer Leader, '24; President of Triple L Club; Representative of Athletic Association on THE TECOAN, '26; S. G. Representative, '26; College Violin Ensemble, '26; Mathematics Club, '26; Tennis Team, '25.



SUDIE GRACE WEST, *A. B.*

DOVER, N. C.

Lanier

North Carolina College for Women,
'24, '25; Mathematics Club, '26.



TECOAN

1926



RUBY WORTHINGTON, *A. B.*

WINTERVILLE, N. C.

Poe

Alumnae Editor to *Teco Echo*, '26;
Proctor, '26.



JUANITA WORTHINGTON, A. B.
WINTERVILLE, N. C.

Poe

Proctor, '23, '25; President H. E. Club,
'25; President Pitt County Club, '25;
Phi Epsilon; Reporter of Phi Epsilon,
'26.

TECOAN


1926

DOROTHY TAYLOR, A. B.
LA GRANGE, N. C.

Poe

St. Mary's; G. C. W.; Duke Univer-
sity.





RUTH LOWDER, *A. B.*
RUTHERFORD COLLEGE, N. C.

Lanier



WYCOAN

1926

GHOSTS OF INDIANS

Indian-footed move the mists
From the corner of the lake,
Silent, sinuous and bent;
And their trailing feathers shake,
Tremble to forgotten leapings,
While with lingerings and creepings
Down they lean again to slake
The dead thirst of parching mouths,
Lean their pale mouths in the lake.

Indian-footed move the mists
That were hiding in the pine,
Bent upon the oval lake
In a bent and ghostly line
Lean and drink for better sleeping—
Then they turn again and creeping
Gliding as with fur and fins—
Disappear through woods and water
On a thousand moccasins.

—WITTER BYNNER.



FIRE-FLOWERS

And only where the forest fires have sped,
Scorching relentlessly the cool north lands,
A sweet wild flower lifts its purple head,
And, like some gentle spirit sorrow-fed,
It hides the scars with almost human hands.

And only to the heart that knows of grief,
Of desolating fire, of human pain,
There comes some purifying sweet belief,
Some fellow-feeling beautiful, if brief,
And life revives, and blossoms once again.

—TEKAHIONWAKE.

HISTORY OF THE SENIOR CLASS

*There was a class went forth every day,
The college it looked upon, that college it became,
And that college became a part of the class for a day, or a certain part of the day,
Or for many years or stretching cycles of years.*

IN September, '22, we found ourselves in our new college home, the one we were to help make, watch grow, and become a part of. When we had become ourselves, we ceased to be teary around the lashes, we were beginning to like our new environment—not casting away the old and assuming the new—but keeping our sincere thoughts of home and finding a place for a new love of our Alma Mater. While we were thus adapting ourselves, we organized our class of twenty-two members with Miriam Shamhart as president. Thus we pursued our duties, but created no undue excitement until May Day; we were then transposed into dancers for the May Queen. Perhaps we were not as “light as feathers” nor “as graceful as lilies,” but we received our compliments graciously and celebrated ourselves.

In September, '23, we returned much improved intellectually from what we were the year before. After welcoming the meek and initiating the pert Freshmen, we began to rise to supremacy, knowing that we were being feared and most of all, knowing that our instructions were being obeyed. After having started off the Freshmen in the way they should go, we began to proceed with our year's work with Christine Vick as class president. This year our class had nineteen members. We were not unlike the general run of Sophomores, but in the spring “with nameless pathos in the air” we began to repent; began to wonder, began to look back upon the deeds of the past year. Each of the class wondered:

*“How shall I this habit break?
As you did the habit make.
As you gathered, you must lose,
As you yielded, now refuse.”*

So it was that such deep thought and good philosophy insisted that we give the much abused and knocked about Freshman class a picnic. We had fun galore, and from that day the class of '27 has been our friend. A few weeks later, after having done such a good deed, we turned ourselves into roses and danced for the May Queen.

After having reformed in the spring, we returned in September, '24, as very understanding, forgiving Juniors. This year, Mary Shelton McArthur was president of our class of twenty-two members. We received the disappointment of our lives because we were unable to give a Junior play, but as luck would have it, we were given a chance to show off our talents in another way—in other words, we gave a minstrel. We probably would not have looked well as chorus girls in the operetta we wanted to present, but we made a hefty looking bunch of Alabama Coon Jiggers. Had we not been so anxious to become school teachers we probably would have been able to wipe Al G. Fields off the map.

Lo, and our dream has come true. We are at last Seniors! However, we do not notice any great change in ourselves; sophistication must have been assumed gradually. We have transformed ourselves from giddy school girls to efficient, sober-minded student teachers. We were able to stage Clyde Fitch's "The Truth" and received praise far and wide as a result of its success.

—ELIZABETH THOMAS.



SENIOR



"SERVICE"
Janie Jackson



"MUSIC"
Maude Johnston



"MIRTH"
Lessie Cogdell



"INNOCENCE"
Bruce Ellis



TECOAN 1926

THE EAST CAROLINA TEACHERS' COLLEGE
1882-1907-1908-1909-1910-1911-1912-1913-1914-1915-1916-1917-1918-1919-1920-1921-1922-1923-1924-1925-1926



"SPORT"
Annie Mae Edwards



"CHARM"
Helen Viniarski



"BEAUTY"
Deanie Boone Haskett



"MOST ATHLETIC"
Blanche Evans

STATISTICS

LAST WILL AND TESTAMENT OF THE SENIOR CLASS

JUST as a great ship sets sail with her passengers and cargo for some port, so the Class of '26 unfurled their banners of Scarlet and Gold and embarked the great ship of "Adventure." Our compass, "Launched, but not Anchored," had assured the party of a pleasant and successful journey. But, at last, the happy band reluctantly lauded at the destined port of "Graduation" and now it becomes our duty to distribute our cargo of valuables to those who have been awaiting our arrival. To the following persons whom we honor with the task of safeguarding our cherished possessions we gratefully bequeath our simple directions of lending our personal property to any succeeding individual or group who may seek aid from the trials and experiences of the Class of '26.

ITEM I

To our parents and friends, who have so gladly given their best to sponsor our educational career at East Carolina Teachers College we fondly dedicate our best records which we have attained and trust that our love may ever hold its rightful place in their hearts and memories.

ITEM II

To our Alma Mater we affectionately bequeath our loyalty and devoted services toward the development of her high ideals and the preservation of her noble standards.

ITEM III

We bestow our unbounding love and appreciation upon President Wright, the captain of our crew, for his many deeds of kindness in our behalf.

ITEM IV

To Miss Morton we affectionately dedicate our love and devotion for her friendship and watchful care.

ITEM V

To the faculty who have so patiently traveled the long journey with us and tenderly administered to our every need, we extend our esteem and thanks; moreover, there are further bequests we leave for individual keeping.

1. To Mr. Austin we reluctantly leave two portraits of our likeness to be used for future references.

2. To Mr. Flanagan we bequeath a helpmate, the said will to be executed as soon as he has made his choice of our number.

3. To Miss Alexander we donate a sufficient quantity of black hose to supply the practice teachers who are in dire need of hose and time.

4. To Miss Hooper and Miss Hall we bequeath our love and gratitude for their untiring efforts in helping to make "The Truth" a success.

5. To Mr. Frank we leave numerous maps and several editions of the *World Almanac*. These to be used by his history practice teachers.

6. To Mr. M. L. Wright and Miss McKinney we leave an appropriation schedule to be used by the budget committee as an aid in appropriating the student fund.

ITEM VI

To the student body we say, "Defend our banners of purple and gold and be ready 'To serve on time, every time'."

ITEM VII

To the Juniors we graciously submit our privileges of practice teaching accompanied by the many criticisms that made life worth living. As an aftermath for practice teaching we bequeath the many happy hours that may be spent in chaperoning underclassmen.

ITEM VIII

To the Sophomores we set aside our dignity and all understanding of the parallel reading they may be assigned in English. Moreover it is our desire for them to thoroughly master and memorize all the rules of etiquette before they appear at the many social functions to be given in their honor.

ITEM IX

To the Freshmen we leave hopes of a better day and advise them to faithfully administer their duties as proctors for "if you are faithful in the little things you will become masters in the big things."

ITEM X

To the "C" class we leave the glad tidings that there is a mate for every person (although Greenville is unable to supply the demand), and, if they will accept the charm and grace which we bestow upon them, each will meet him ere it is too late.

ITEM XI

Christine Vick wills her executive ability and good will to the next Student Government President.

2. Bruce Ellis dedicates her wit and innocence to any E. C. T. C. student who feels capable of assuming the responsibility of safeguarding it.

3. Frances Smith leaves a couple of Fords to the *Teco Echo* business manager to aid her in getting ads.

4. Kathleen Dail grants her ability to select appropriate pictures for the student body to the new vice-president.

5. Elizabeth Thomas leaves a standardized test in grammar and rhetoric for the English practice teachers to take, in order that they may become thoroughly familiar with the subject, before they meet the high school pupils for their lesson.

6. Janie Jackson and Lessie Cogdell will their office in the science department to the student government council, and trust that they may spend as many a fascinating session in there as the former have spent in conversation and research.

7. Helen Viniarski leaves her ability to speak eighteen languages to Mr. Deal, and requests that he give an occasional lecture in the unknown tongue.

8. Musette Montague requests that Mary Banks be assigned to room in her quiet study at the end of the hall, because she expects her to get inspirations from the various conversations she overhears as the rest of the world goes by.

9. Jennette Wedmore wills her stage career as a violinist to Jean Morton.

Signed and sealed on the eighth day of June, A. D. Nineteen Hundred and Twenty-Six, at East Carolina Teachers' College, Greenville, N. C.

(Seal) LESSIE COGDELL,
Testatrix.

WITNESSED BY:

JANIE JACKSON, *President,*
KATHLEEN DAIL, *Vice-President,*
FRANCES SMITH, *Secretary.*





D's



ROBERT GREESON FITZGERALD, JR.
Mascot of Senior Normal Class



SENIOR NORMAL CLASS

OFFICERS

DELL POPE	<i>President</i>	JULIA TYLER	<i>S. G. A. Representative</i>
FANNIE LOWE	<i>Vice-President</i>	MAE MARTIN	<i>Critic</i>
PAULINE MOORE	<i>Secretary</i>	MELBA WARREN	<i>Editor</i>
FRANCES HARMON	<i>Treasurer</i>	ELIZABETH JOHNSON	<i>Cheer Leader</i>
CATHERINE SMITH	<i>Sergeant-at-Arms</i>

SENIOR NORMAL CLASS

COLORS: *Lavender and White*FLOWER: *Sweet Pea*MOTTO: *"Give to the world the best you have and the best will come back to you."*

POEM

We are the Class of '26,
 The best we think, of all,
 Who ever dared to penetrate
 The depths of a college wall.

The standards we have lived up to,
 Have proved the very best,
 Although to gain the knowledge here
 Has doubtless been a test.

The ideals of our class have been
 To reach the highest goal,
 To go upward and ever onward
 As each enlightened the soul.

May our services be unselfish,
 As our duty, we try to do,
 And although we become discouraged,
 We will stick 'till the job is through.

As we bid farewell to our College,
 We will give to her a cheer,
 We love thee, East Carolina!
 May you grow greater each year.

—BLANCHE FITZGERALD, '26.

BESSIE ABBOTT
SOUTH MILLS, N. C.

Poe Society; Camdonian Club.

*"Better to be small and shine
Than great and cast a shadow."*

Bessie is quietness itself, but beneath that, one may easily perceive her sincerity and ability in doing what she once begins. She is one of those "best" girls who can be depended upon at all times no matter what should happen. As the old saying goes, "Quality comes in small packages."



CHRISTINE ADAMS
MERRY HILL, N. C.

Poe Society; Bertie County Club.

*"She doeth little kindnesses
Which most leave undone or despise;
For naught that sets one heart at ease,
And giveth happiness or peace,
Is low esteemed in her eyes."*

"Stine" is a rare combination of soberness and wit. She is never found shirking her studies—especially music. We feel sure that success and happiness will be her lot in the world.



EFFIE ADAMS
MORVEN, N. C.

Poe Society; Anson County Club, '25; Athletic Association; Hiking Team; Track Team, '25.

*"Here's to a girl with a heart and smile
That makes the bubbles of life worth while."*

In Effie we find a combination of sunshine and laughter. She never leaves her smile behind, because it is a part of her. As to her future—well, there are rumors and rumors you know—but it could be nothing but bright, whether she enters the teaching profession or—some other!



JENNIE DARE AIKEN
BREVARD, N. C.

"Poe Society; Basketball Team, '24, '25; Poe Marshal, '26; Assistant Editor *Teco Echo*, '26.

*"I dreamt I was in love again with
The one before the last,
And I smiled to greet the pleasant
Pain of that innocent young past."*

The least that can be said of "Jent" is that she is entertaining. You might think to hear her talk that her interest was centered on men, bridge and dances rather than college activities, but wait until you see her work as a marshal, know her interest in the *Teco Echo* or see her report at the end of the term. A good worker, a good sport, a good pal always is "Jent."





CARRIE LEE ARNOLD

JONESVILLE, N. C.

Lanier Society; Marshal, '26; Chairman of World Fellowship Committee, '26; Vice House President, '26.

"She's just that which is neatest, 'completest' and sweetest."

*Neat and sweet, efficient, too,
That is Corrie Lee,
A worker, no shirker, that is true;
We'll see what she'll be
And not feel dismay,
At her renown the country round, some day not far away.*



PATTIE MAE BAGGETTE

WINOSOR, N. C.

Poe Society; H. C. C., '25; President Bertie County Club, '25; Marshal, '26; H. D. D., '26.

*"Tis reported that Dan Cupid's dart,
Has punctured this fair damsel's heart,
But when we ask 'Pat'
She says, 'Look at my frat,'
Now what do you think is the meaning of that?"*

"Pat" is East Carolina's most graceful girl. With her charming personality she has won a host of friends. A girl any sweeter would be hard to find.



FRANCES BARRINGER

SALISBURY, N. C.

Poe Society.

*"It's the songs you sing and the smiles you wear
That's making the sunshine everywhere."*

Frances works while she works, and plays while she plays. This, with her charming disposition, probably accounts to her success in everything she attempts. Our best wishes go with her always.



URSULA SINGLETON BATEMAN

COLUMBIA, N. C.

Poe Society; Krammers Club, '26; Athletic Association.

*"The men—O Heaven bless them, I can't;
I'll be happy, I'll be free, but I'll be sad for nobody."*

"Song-bird" and "heart smasher"—that's Ursula. As a mischief maker she is a wonder. Her victories in this field are only surpassed by the number of "sheiks" she has tamed. She is ambitious, unselfish, modest and unassuming. By her high ideals and right principles she has won for herself an abiding place in the hearts of all.

GENEVIEVE BAUCOM

RALEIGH, N. C.

Poe Society; President Johnston County Club, '25; Clayton Club; Athletic Association; Track Team, '25; Basketball Team, '25.

*"She's sweet of disposition,
She's loving, wise and kind,
She's full of true affection,
She cannot be defied."*

Such a charming and modest personality as hers is as beautiful as it is rare. Behind her sunny disposition, we realize her ability to succeed in whatever she attempts. Who could refrain from loving a person as sincere, lovable, intelligent and true as "links"? Why, "To know her, is to love her."



JESSIE VERNON BAZEMORE

LEWISTOWN, N. C.

Poe Society; Track Team, '24; Proctor, '24, '26; Art Editor of THE TECOAN, '26.

*"Errors like straws upon the surface flow,
He who seeks for pearls must dive below."*

Jessie has instilled in her a heart of a true friend. She is always happy and ready for mischief, which can be told by one glance at her brown eyes. Her abilities are many; her work in art being held up as an example for the less talented to follow.



LEATHEA LEWIS BAZEMORE

WINOSOR, N. C.

Poe Society; Bertie County Club, '25; Bertie-Hertford County Club, '26.

*"Kind and loyal, a friend to all,
She's always ready to answer the call;
Whether it be in sick room or class,
She's never too busy to do the task."*

Leathea has the rare combination of a sunny, pleasure-loving nature, determination and ability. Her lovable disposition has won her many friends. Whatever she does or wherever she goes, it will be a "lucky corner" filled by "Tip."



CHARLOTTE BEDDINGFIELD

MILL BROOK, N. C.

Lanier Society.

*"Earth seems more sweet to live upon, more full of love
because of her."*





MERLE BELL
ROSEMARY, N. C.

Poe Society; More Eaters Club; Member of D² Club; Halifax County Club.

*"For if she will, she will;
You may depend on't,
And if she won't, she won't;
And here's an end on't."*

Merle is a steady and earnest worker in whatever she undertakes; owner of her own heart, we think, and master of her own mind. What she says she means—whether it is seriousness, sarcasm or jest. We know that she will meet success wherever she goes. Here's good luck to you, old girl!



MARY VERONA BEVERLY
CONETOE, N. C.

Poe Society; Treasurer of Edgecombe County Club, '26.

*"You hardly know she is around,
She's so quiet and sweet,
But when it comes to her studies
She is noticeably hard to beat."*

Mary, we will long remember and love you, for your kindly smile and helping hand has often made a heavy load light, and we are sure that no matter what you start out to do you will succeed, because you have the secret of success ever with you—that of serving always in the cause of the right.



MARY LOUISE BELL
HOBGOOD, N. C.

Lanier Society; Lanier Debater, '25; House President, '25; President Lanier Society, '26; Proctor; Halifax County Club; Athletic Association; Left-Hand Club.

*"Love her? Well I guess we do;
Love her mighty fond and true,
Love her better each day
'Dunno' Why—it's just her way."*

For tact, character and ability here's the girl. We can truly say we are glad Louise was one of us, for her pleasant manner, her beaming smile, and her warm friendship has meant a lot to us.

We wonder what East Carolina will do without Louise, for she is a leader that is sincere. Wherever she goes, we wish her a great success.



EMMA BENNETT
WARSAW, N. C.

Poe Society.

*"Her happy disposition, and her pleasant smile,
Have won her friends for many a mile."*

"Bennie" hails to us from Warsaw. She is the kind of girl we all love, a good sport, a jolly pal; and a better friend cannot be found.

AUDREY ISABEL BIGGERS

MATTHEWS, N. C.

Poe Society; Athletic Association.

"A light heart lives long."

Life was made for love and happiness so I put all my troubles in the bottom of my heart and sit on the lid and smile.



MARY EMMA BIZZELL

KINSTON, N. C.

Lanier Society; Domino Six Club; Lenoir County Club.

"Impulsiveness though she may be,
She is true blue, as you see."

Mary Emma, we will all miss you and treasure those precious memories of your refreshing characteristics, for you are one girl whom we all love. May happiness, joy, and love be yours always.



MILDRED CORNELIA BOYETTE

KENLY, N. C.

Lanier Society; Johnston County Club.

"A true friend is more precious to the soul than all that which is inherited beneath the sun."

They say that "daisies won't tell," but if you want to tell anything, tell Mildred. She's one of the most confident girls on the "Hill," and is true as steel—always ready with a winning smile to solve any problem that might confront you. To like Mildred is to know her; knowing her, you find her a valuable friend. She's loyal, dependable, straight-forward in every way, always ready to laugh at a good joke and frequently has one to offer. She's a friend worth having and we all wish her success in life.



RUTH BOWEN

PLYMOUTH, N. C.

Poe Society; Vice-President Y. W. C. A.; Y. W. C. A. Choir; Delegate to Y. W. C. A. Conference at Blue Ridge.

"When duty whispers low,
'Thou must,'
The youth replies
'I can'."

Ruth will never be forgotten by those who know her. When these walls shall crumble, her ideals will stand unequalled, unchanged.



HETTIE MARIE BRASWELL
ENFIELD, N. C.

Poe Society; Halifax County Club.

*"Sincerity is to speak as you think,
To do as we pretend and profess,
To perform and to make good what we promise,
And really to be what we would seem and appear to be."*

Hettie will always be remembered for her great talent and high ideals; a very helpful friend to all who know and have seen her.



LETA BRANTLEY
SPRING HOPE, N. C.

Poe Society; Nash County Club; Athletic Association.

*"'Still water runs deep'
May be said of this lass,
But you'll find she's not asleep
When she shines in class."*

Leta is a pal worth having.



LELIA BRAGG BULLOCK
CREEDMORE, N. C.

Lanier Society; H. C. Club, '25; H. D. D. Club, '26;
Proctor, '25; Athletic Association.

*"In her first passion woman loves her lover,
In all the others all she loves is love."*

Charm is Lelia. With the personality she so fortunately possesses she has won many friends. Her silver voice drives away the "blues" of those who hear her. May all happiness in life be hers.



ORA BRIGHT
NEALSVILLE, N. C.

Poe Society; Track Team, '24; Baseball Club, '24; Beta Kappa, '26; Athletic Association.

"Doesn't pay to worry, things are bound to happen anyway."

"Bright's" unique wit, which she brought from the mountains, has won for her many friends. She is also a math "shark." The lucky man will never have to worry with figures.



ANNIE GREY BRIDGERS

LASKER, N. C.

Poe Society; Northampton County Club.

"The mildest manners and the gentlest heart."

Annie Grey is a girl who is loved by all who know her. She is loyal, unselfish, and ready at any time to help anyone she can. Besides this, she is a good student. We are all sure that the future holds much in store for her.



IOLA BRITT

BUIES, N. C.

Poe Society; Robeson County Club, '25; President of Robeson County Club, '26; L. A. C. Club, '26.

*"A smile for all, a greeting glad;
A loving, jolly way she had."*

Iola is well-known because of her amiable and pleasant disposition. She's a great friend to all, because if it's fun you're up to, she's with you; if you're down and out, she's the one to go to. She's a "rare good fellow," whether serious or gay.



IOLA BRITT

BUIES, N. C.

Poe Society; L. A. C. Club, '26; Robeson County Club; Athletic Association; Class Tennis Team, '25, '26.

*" 'Tis the words you speak and the smiles you wear
That makes the sunshine everywhere."*

There is a ray of sunshine to be found in the darkest places when Iola is around. She is fond of "breaking the monotony to change the effect." No situation is too trying for her optimism.



GEORGIA BUFF

Poe Society; Athletic Association.

"To know Georgia is to love her."

*"Sincerity is to speak as we think,
To do as we pretend and profess,
To perform and make good what we promise,
And really to be what would seem and appear to be."*





MYRA BUNCH
EDENTON, N. C.

Lanier Society; Proctor.

*"So with the world thy quiet ways shall be,
An endless theme of love and praise."*

You can tell by Myra's dignified expression that she is a Senior. Her amiable disposition with her unselfishness portrays a real girl. She has made many friends among her classmates and those who do not know her, miss a great deal.



DOVIE BURNETTE
GREENVILLE, N. C.

Poe Society.



RUTH BRYANT
ELM CITY, N. C.

Lanier; Proctor; Wilson County Club; Athletic Association.

*"When joy and duty clash
Let duty go to smash."*

Ruth is a quiet, studious, true and noble girl. She is loved by all who come in contact with her because of her sweet personality and kind disposition. We predict for her a successful future in whatever she undertakes.



MARY EMMA BRYAN
POLLOCKSVILLE, N. C.

Lanier Society; Left-Hand Club.

"Even though vanquished, she could argue still."

Mary Emma has proved herself worthy of the confidence reposed in her. With unswerving fidelity to each and every trust, she has been a loyal member of the class. What more can be said?

SUE BRYAN
 OXFORD, N. C.

Poe Society; Treasurer of Granville County Club.

*"Interested and true,
 If she likes you
 She'll stand by you."*

"Sue," as she is known to us, is a serious-minded girl. She never talks unless she has something to say and she never fails to help those less fortunate than herself. Though quiet, she has the knack of winning many friends, and it can be truthfully said that those won are never lost.



MILDRED MAE BYRUM
 EDENTON, N. C.

Poe Society.

*"Neatness, simplicity, kindness combined,
 With a gentle heart and open mind."*

Here is a classmate we can never forget. When one has won her friendship, she has won something really worth while. We wish her much success in the future. Her ambition is to weigh a hundred pounds.



MARGIE MAY CALDWELL
 DILLON, S. C.

Poe Society, Member of S. C. Club, '25, '26; Proctor, '25, '26.

*"A smile for all, a greeting glad,
 A lovable, jolly way she had."*

Margie's fun is never at any one else's expense and though she'd much rather laugh than cry over anything, you'd have to go a long way before you'd find a more sympathetic and understanding friend.



RUBY CANNON
 AYDEN, N. C.

Poe Society; Pitt County Club.

*"Her happy disposition,
 Her pleasant smile,
 Have won her friends
 For many a mile."*

Ruby is the very person you need when you are sad or discouraged, for she can always speak that "word" which no one else could ever say. She is a real "honest-to-goodness" girl. She never pushes herself forward, but she is ready to do her part in anything, at any time.





HATTIE COPPEDGE

SPRING HOPE, N. C.

Poe Society; Proctor, '25.

*"The' modest and shy,
She'd laugh or die."*

Hattie is a girl who is always jolly and full of fun. Bubbling over with energy and enthusiasm, finding joy in life always, she is a loyal friend, classmate and pal. The Class of '26 wishes her much success in the future.



MARY MOYE CARPER

GREENVILLE, N. C.

Lanier Society; Pitt County Club.

*"God made a heart of gold,
Skinning, and sweet and true,
Gave it a home of fairest mold,
Blessed it, and called it you."*

Her sweet charm, mingled with the grace of kindness and love, cling to her name, whenever it is mentioned. In perfect harmony with life's best gifts, she is attractive, sincere and dependable, while she crowns these qualities with a worthy dignity and poise. To play with, to cry with, to love—always a true-blue, honest-to-goodness friend, if you know what I mean—that's Mary Moye!



MAUDE CARTER

WAXHAW, N. C.

Lanier Society.



ESTELLE CHAMBLEE

WAKEFIELD, N. C.

Poe Society; Wake County Club; Glee Club.

"Tiny parcels are the best."

A cheerful smile and lovable personality like "Stelle's" makes one know that she is a true pal. Serious-minded but always ready with a jolly laugh, she has made many friends and a good name that will live long in the memories of her classmates.

FLORENCE CLARKE

LAKE LANDING, N. C.

Poe Society.

*"For she is wise, if I can judge her,
And fair she is, if that mine eyes are true,
And true she is, as she hath proved herself."*

The secret of being loved is in being lovely, and the secret of being lovely is in being unselfish—that's Florence.



MAUDE CLAY

HESTER, N. C.

Poe Society; Granville County Club; Class Historian.

"Still water runs deep."

Here is a quiet, sincere and energetic girl. Upon her countenance can be read a character of honesty, sincerity, loyalty and respect for her fellow workers. There was never a person more loyal to this maxim, "What is worth doing at all, is worth doing well."

Maude is to be commended upon her selection of so noble a life work, for as a teacher she will instruct the youth of our land in the way they should go, by setting before them an example of one who has a noble purpose, high ideals and reverence for the best things in life.



MARY COLSON

MOORESVILLE, N. C.

Poe Society; Iredell County Club; Hiking Club; Wearer of Letters, '26.

*"Little in size
But so very friendly and wise."*

You have often heard, "Where there's a will, there's a way"—that's Mary. When she undertakes a thing she doesn't stop until she has succeeded. She is dependable, ambitious, and frank in her opinion. Success awaits her in everything she undertakes.



KATHLEEN COX

AYDEN, N. C.

Lanier Society; Proctor, '25.

*"The virtue of her lively looks
Excels the precious stones,
I wish to have none other books
To read or look upon."*



EULA COLLIER

Poe; More Eaters Club; Member of D² Club; Halifax County Club.

"Short in stature, but long in all that makes a lovable girl."

She might—but we hardly think she will—follow her teaching profession long. However, we are wishing her success in whatever she undertakes.



ROSA NELL COX

RAEFORD, N. C.

Poe Society.

*"Better to be small and shine
Than to be large and cast a shadow."*

If good nature and smiles were money, Rosa Nell would soon go bankrupt; such is her great propensity for showering both around, about, over, through and among us. We would do her a great injustice if we did not mention her alluring brown eyes. Well—maybe they vamped Howard. We won't say. It is with deep regret that we say "Au Revoir" to a girl like this, but we wish her much prosperity and a good future in the practice of her chosen profession.



ELOISE CREDLE

NEW HOLLAND, N. C.

Poe Society.



IZONA CURRIN

OXFORD, N. C.

Poe Society; Granville County Club; Krammers Club, '26.

"There is a great deal of devilry behind this mild exterior."

Gloom spreads its wings and sails to foreign realms when "Arizona" comes smiling around. Cherishing a cordial good will for everyone, her quick sympathy, high ideals and keen sense of honor have made her a matchless and trustworthy gal to all. Here's hoping "Arizona" will banish the idea of teaching a "one-pupil" school so soon after graduation. But she knows her own mind, and will have her own way, so who can tell?



PAULINE CURRIN

OXFORD, N. C.

Poe Society; Proctor, '25; Granville County Club.

*"Laugh, and the world laughs with you,
Weep, and you weep alone."*

Pauline's cheery smile and friendly manner have won her a host of friends. Everyone who knows her loves her, for no matter where you see her she is just a jolly good fellow. Behind her smiling countenance is a character of sterling worth, and a heart of purest gold. We are sure that she will be a successful teacher, and our best wishes will always go with her.



ANNIE LOIS DALRYMPLE

JONESBORO, N. C.

Lanier Society; Treasurer of Class, '25; Tennis Club; Baseball Team; Athletic Association; Y. W. C. A. Choir; Secretary of Athletic Association, '26; Chairman of Social Service Committee, '26; President of College Presbyterian Sunday School Class, '26; Y. W. C. A. Representative to THE TECOAN, '26.

"Nothing endures but personal qualities."

A quiet step, a smile, and then Lois. Is she reserved? No, in this respect she keeps to a happy medium. As a friend, she is ever loyal and sincere. As a student—well, she has great love for the higher arts, especially letter writing, and often in days gone by she could be seen seated near a table in pleasant conversation (written) with an "invisible surgeon," yet she loves only "practice teaching." Will she make teaching her profession, or assist in medical research work? Who will decide?



CATHERINE DANIEL

HAZLEHURST, GA.

"A little laughter and good will lengthens life."

Catherine is not one of the species that you can knock down and she comes up smiling, for she is in a good humor when a good humor is appropriate, but take my word for it, she lets nobody walk over her. Catherine likes studies, but enough fun and good time to flavor 'em up.



ANNIE BELLE DAUGHTRY

ROANOKE RAPIDS, N. C.

Lanier Society; More Eaters Club; Halifax County Club; D² Club.

*"Tis easy enough to be pleasant
When life flows along like a song;
But the girl worth while is the girl who can smile
When everything goes dead wrong."*

Annie Belle says it isn't any use to worry about what you have to do, or what you haven't done, so she doesn't do it.



EDNA DAVENPORT
GREENVILLE, N. C.

Lanier Society.



ANN DELLINGER
WILMINGTON, N. C.

Poe Society; Domino Six.

*"The gladness of her gladness and the sadness of her sadness,
Are nothing compared to the badness of her badness when
she's bad."*

This quotation needs a little explanation. We don't mean that Ann is bad always. We really mean that she is a good sport and through all her joys and sorrows there runs a little thread of mischief—that is Ann.



MRS. MAMIE E. DEMPSEY
WINTERVILLE, N. C.



LOUISE DICKINSON
GREENVILLE, N. C.

Poe Society; Athletic Association.

*"God made a heart of gold,
Shining and sweet and true,
Gave it a home of fairest mold,
Blessed it and called it you."*

Louise is the life and light of her class. She is energetic, and a natural born leader. She is a rare compound of quality, noble and true, a good chum, sport, pal, full of wit, and at the same time possesses plenty of common sense—a thousand girls in one.

CARRIE MAY DUNN
KINSTON, N. C.

Poe Society.

*"To know her is to love her
And love but her forever,
For nature made her what she is
And never made another."*



TARMESIA DUNN
SPRAY, N. C.

Poe Society.

*"A smile for all, a greeting glad,
A kind, good way she had."*

Tarmesia is a friend to everybody. If she ever vows friendship she performs it to the last article. If the work is hard and she cannot find a way to do it she will make one. Determination is the master key to success.



JOSEPHINE SAUNDERS EARLY
AULANDER, N. C.

Lanier Society; Proctor, '25; Hertford-Bertie County Club; V. W. C. A. Choir, '25; Glee Club, '26.

"O may fortune be so good as to save me from old maidenhood."

By her outspoken nature and simplicity of manner, "Joe" has won for herself a host of friends and admirers at East Carolina. She has proved herself to be a good sport and a thoroughly capable student. Her chief hobby, however, seems to be waiting for the evening mail to bring good news from the East.



ESTELLE EDMUNDSON
FREMONT, N. C.

Lanier Society; Wayne County Club.

"She is like an April shower—full of fun and lots of laughter."

She is very quiet until you know her well enough to reach her inmost thoughts; then, she is as full of fun and mischief as anyone.





ADELIA EDWARDS
SHARPSBURG, N. C.



ELIZABETH EDWARDS
GREENVILLE, N. C.

Lanier Society.

*"Better to be small and shine,
Than to be large and cast a shadow."*

A happy disposition is a great blessing, indeed. "Lib" is not only happy herself, but with her bright smile and friendly manner she has certainly been a ray of sunshine, illuminating the life of everyone with whom she comes in contact.



IRENE ETHERIDGE
SOUTH MILLS, N. C.

Poe Society; Glee Club; Camdonian Club; Y. W. C. A. Choir.

*"So earnest in her work and fun,
We know not half the work she's done."*

"Weenie's" a "jolly good fellow." She must carry a box of smiles somewhere about her for she's always wearing one. Her friends are innumerable—her heart itself is brimful of friendliness and good cheer.



ETHEL LEE EVERETTE
CONETOE, N. C.

Poe Society; Edgecombe County Club; Athletic Association; Y. W. C. A. Choir.

*"Sweet, true and always kind,
A better pal no one could find."*

Ethel we love you and yet it's hard to tell just why. The best we can do is to say that it's because you are you. Every one of us feels that it has been a great opportunity to have known and worked with you. We wish you the best of everything and unlimited happiness.

HELEN EDWARDS

HENOERSON, N. C.

Poe Society; Athletic Association; Pals Club.

"A merry heart goes all the way."

There is so much to be said about "Hiale Baby" that it is hard to know where to begin, for her admirable qualities mount to the sky. No one studies more than "Hiale Baby," yet with all her studying she finds time to smile. Withal she is a good sport. We predict that her ambition, her sincerity, and her high ideals in life will be the means of her attaining success in the field of teaching.



ELIZABETH EVANS

GREENVILLE, N. C.



BLANCHE FITZGERALD

SMITHFIELD, N. C.

Lanier Society; Johnston County Club; Class Poet, '26.

*"She's lucky, she's kind, sincere and true,
Quite studious, more generous than any of you."*

Blanche's fine qualities along with her sweet disposition tend to make her one among many. She is a girl with high ideals; she is capable of assuming responsibility. We are sure she will find success wherever she goes.



DAISY FINCHER

MINERAL SPRINGS, N. C.

Poe Society; Union County Club.

"To know her is to love her; have I not said enough?"

Daisy likes college life in general, but home much better. At first she thought of college life as a joke, but one day something intercepted her path which caused her to take life more seriously—"practice teaching." She is very ambitious. Watch her succeed!





NANCY PEARL FREEMAN

LUMBERTON, N. C.

Poe Society; Robeson County Club.

"Honor lies in honest toil."

*' Her face is pleasant to behold,
Her eyes, they are true blue;
Her smile is worth its weight in gold,
Her manner, patient, kind and true—this is Pearl.'*



HELEN GOODWIN

EDENTON, N. C.

Poe Society.

*"Whistling, smiling or singing a song,
Happy and contented she joys along."*

Helen is just the jolly kind of girl admired by everyone. She must carry a box of smiles somewhere about her for she's always wearing one. Her highest ambition is to journey through life with a smile and a song and never grow old.



ELFRIEDA E. GOUGER

MOORESVILLE, N. C.

Lanier Society; Hiking Club, '25; Athletic Association; Fredell County Club; A. U. L. I. Club, '25, '26.

*"Original, with a heart of gold,
A head to fit are her's we're told."*

Elfrieda is a very capable girl. Whatever she undertakes she accomplishes, and we see in her future a great success. With success we wish her happiness.



ELIZABETH LEE GRANT

GARYSBURG, N. C.

Lanier Society; Northampton County Club.

*"Take life easy; never da today
What you can put off until tomorrow."*

"Lib" is a grand old sport. When you win her friendship, you have won something worth while. She never worries or frets over things, but takes life as it comes to her, and makes the best of it.

MARY CATHERINE GRANTHAM
GOLDSBORO, N. C.

Lanier Society; Glee Club; College Quartet, '25, '26;
Y. W. C. A. Choir, '25, '26; Wayne County Club.

"She'll say her say if the whole world's against it."

Yes, that's "Cat" up and down, and a sweeter girl will never be found. I must not forget her voice for when she sings she will charm a saint.



RUTH GRANTHAM
PRINCETON, N. C.

Poe Society; County Club, '26.

"She's rolls them"—her eyes. She's quite a good girl, but after all is said and done, her special characteristic is "She rolls them"—those eyes.



KATHLEEN GRIFFIN
FAIRMONT, N. C.

Lanier Society.

"Smile and the world smiles with you."

"Cat" is a treasure—when we need a friend to her we go for never was one so willing to help. She is a generous, good sport and never troubles trouble, and is ready for all of the fun. We can sum "Cat" up as being a true, lovable and sweet girl.



EVA LILLIAN GRIMES
TARBORO, N. C.

Lanier Society; Secretary Edgecombe County Club.

*"A big heart wishing to do right,
And to be friends with everybody."*

Here's to our Eva, one of the dearest of girls! She is a friend to everyone, true, kind, and lovable—and what is more to be desired in a friend? We know that she will be successful wherever she may be.





LUCY L. HANKS

BELMONT, N. C.

Lanier Society; Gaston County Club; Athletic Association.

"There is no truer-hearted."

Lucy's lovable and modest, sincere and true; she always accomplishes what she starts to do. She's not afraid to say her say; but is a steadfast girl in every way. An excellent teacher she is sure to be, for she has the knowledge and ability.



GUSSIE LEE HARRELL

ELIZABETH CITY, N. C.

Poe Society; Pasquotank Tribe.

"What light is brighter than the sunshine she makes for others?"

A conscientious worker and true friend is Gussie Lee. She is blessed with an unusually brilliant mind. She is sincere in what she says and does. There is nothing too great for her to do for you. She has won a host of friends among both the faculty and students.



FRANCES L. HARMAN

TITUSVILLE, FLA.

Poe Society; Athletic Association; Treasurer of Class, '26; Tennis Club; Hiking Club; Baseball Squad; Granco Club.

*"I would be friend to all—the foe—the friendless;
I would be humble, for I know my weakness,
I would look up—and laugh—and love and lift!"*

A good sport, a jolly pal, a true friend in sunshine or in rain, and ever forgetful of self—that's "Frank."



HILDA MAE HARE

APEX, N. C.

Lanier Society; Wayne County Club; Y. W. C. A. Cabinet.

*"A perfect woman, nobly planned,
To warn, to comfort, and command."*

Hilda always meets her tasks and difficulties with a smile. When you are seeking information, you may assure yourself that you will attain your desire. Sweet, good, and kind we have found her the same yesterday, today and tomorrow. We know that her strong ambition and her sunny disposition will bring her much success.

MINNIE HART

SEABOARD, N. C.

Poe Society; Northampton County Club.

*"She cannot be surpassed
If whenever it comes to wit;
She has a personality
That will in all cases fit."*

If you once gain her friendship you have a friend that is not found in many, for when she loves, she loves with her whole heart, and is willing to make any necessary sacrifice for those whom she loves.



MARTHA ELIZABETH HASSELL

CLAYTON, N. C.

Critic Junior Normal Class; Testator Senior Normal Class; Secretary Johnston County Club; Clayton Club; K. Y. M. B.

*"Still let me sleep, embracing clouds in vain,
And never wake to feel the day's disdain."*

Martha possesses those qualities which were most admired in our grandmothers. Her quiet and unassuming manner is balanced by her love for frolic and fun.

She has one great weakness in the superlative degree—sleep—sleep—sleep. She is a firm advocate of the policy of having Mrs. Jeter to serve breakfast in the rooms and wants classes to begin after she gets up instead of the way they run at present. Nevertheless we know that she will make a wide-awake teacher.



MAY HELMS

CHARLOTTE, N. C.



ANNIE MERCER HENRY

ROCKY MOUNT, N. C.

Lanier Society.

*"Not too serious,
Not too gay;
But a rare good pal
In a rare good way."*

Steady, likeable and true is Annie Mercer. She is everybody's friend and is appreciated by all her classmates. Those who know her love her, and no better pal can be found.





BETSY HENRY
ROCKY MOUNT, N. C.

Poe Society.

"Joy rises in me like a summer's morn."

"Betsy" is sweet, modest, and sincere. She has wit and humor to make her presence enjoyable. She's "true-blue" all the way to her heart, and is the kind that makes you see the sunny side of life.



FRANCES HERRING
LA GRANGE, N. C.

Lanier Society.

"Duty comes before pleasure."

This quiet girl lives up to her motto: "Always ready when duty calls." Yet, we find in her a humorous side. She is always ready for fun when her duties are finished. Frances is a good friend to have, and lucky are they who know her.



FLORENCE HICKS
WISE, N. C.

Poe Society; Tennis Club.

*"To see her is to know her,
To know her is to love her."*

"Flossy" is a girl loved by all who know her. She is loyal, unselfish, and ready at any time to help anyone she can. We are sure that the future has in store much for "Flossy."



VIRGINIA HICKS
HENDERSON, N. C.

Lanier Society; Granville County Club; Athletic Association.

*"A smile for all, a greeting glad,
A lovable, jolly way she had."*

Virginia is an all-round good girl. She's a good sport and enjoys everything. She is always full of pep, and wears a smile the whole day through.

ELLEN A. HINES

WILSON, N. C.

Poe Society; Basketball Team, '25, '26; Baseball Team, '25, '26; Track Squad, '25, '26; Athletic Association; Lieutenant Athletic Society, '26; Captain Basketball Team, '26; Treasurer N. G. F. Club, '26; Wearer of Letters, '25, '26.

*"Ellen's eyes, Ellen's smiles,
Are all beyond expressing,
Who will be the next one vamped
Keeps us all a-guessing."*

Just to make a long story short, she's a good old pal of a mighty good sort.



ELGIA HOCUTT

CLAYTON, N. C.

Poe Society; Society Representative to THE TECOAN; Johnston County Club.

"Sympathy is the golden key that unlocks the hearts of others."

Elgia is a thousand girls in one. She's true to the tradition of what a real East Carolina girl is: Quiet and demure but true and steadfast. We predict for Elgia a great future with success in more lines than one.



MILDRED PAULINE HOFFLER

SUNBURY, N. C.

Poe Society.

*"Rare compound of quality, noble and true,
With plenty of sense and good humor too."*

A jolly, fun-loving and altogether likeable girl is Mildred. On account of her tact and perseverance we know she will always be successful in whatever she may undertake.



CLYDE HOOKS

KENLY, N. C.

Lanier Society; Johnston County Club; Hiking Club, '25.

"Not swift nor slow to change, but firm."

She's an all-round good sport, but she knows what she wants and she gets it. How good to be so firm, so self-determined.





ELIZABETH HOLLAND

BETHEL, N. C.



HULDAH WALSTON HOOKS

FREMONT, N. C.

Lanier Society; Hiking Club; Athletic Association; Wayne County Club; Krammers Club, '26.

*"For if she will, she will, you may depend on't,
And if she won't, she won't, so there's on end on't."*

Huldah, one of our cutest girls, is always ready for a good time. Many of us envy her way of getting around things. In her many pranks and jokes, she has won the honorable name of "Sudie Perkins." Don't mistake this, for "Sudie," like all of us, has her serious moments. Only those who know her can appreciate her. Words cannot describe her. In fun and in play just a jolly, good pal in every way—that is "Sudie Perkins."



ANNIE ROWE HOUSE

WELDON, N. C.

Lanier Society; Chief Marshal, '26; Proctor, '26.

*"She is pretty to walk with,
And witty to talk with,
And pleasant, too, to think on."*

Annie Rowe's position as chief marshal "just fits" for she is a chief among our tribe, to say nothing of the marshals. One might call her, "a prince of a fellow," meaning, of course, that she possesses a magnetic personality, and is a girl who excels.



LA RUE FLOYD

FAIRMONT, N. C.

Poe Society; Secretary Robeson County Club; Proctor.

"To say well is good, but to do well is better."

It is just La Rue—quiet, modest and unassuming would most nearly describe this little girl. She never sells for her real value until after she is known. She is never too serious to laugh, and yet, never too laughing to be serious.

ANNIE LEE HOWARD

GREENVILLE, N. C.

Poe Society.

*"God made a heart of gold,
Shining and sweet and true,
Gave it a home of fairest mold,
Blessed it and called it you."*



MARY MARGARET HUDSON

MOORESVILLE, N. C.

Lanier Society; Vice-President of Iredell County Club; Athletic Association; Basketball Squad; Tennis Club; Baseball Club; Wearer of Letters; Proctor.

*"A sweeter face there never grew,
Nor a being so dear and true,
The goodness, the kindness, the charm of 'U',
Is as fresh and glowing as the morning dew."*

We couldn't do without "Hudson" on our class, on our hall or in our college. She makes us laugh, "sits on us" with her sarcasm, yet can sympathize in our troubles. We'll say she's a true-blue pal.



LEONA JARVIS

STRAITS, N. C.

Poe Society; Proctor.

*Leona is full of fun and wit—
Although she is small,
She loafs—not a bit,
What her calling in life is
No one can tell,
But whatever it is
She will fill it well.*



ELIZABETH JOHNSON

GOLDSBORO, N. C.

Poe Society; Cheer Leader of Poe Society, '25, '26; "D" Class Cheer Leader.

*"A pretty girl, a witty girl,
A fine girl so full of fun,
A brainy girl, a care-free girl,
A thousand girls in one."*

She possesses a winsome personality, a happy disposition, and the faculty of making hosts of friends. Because of her optimistic mood, "Liz" creates such a sunny atmosphere that the "blues" could not exist in her presence. Indeed, we have found one of the best of sports and a delightful friend.





FAYE JOHNSON

CONWAY, N. C.

Lanier Society; Northampton County Club.

*"Far may we search before we find
A heart so noble and so kind."*

For an earnest, reliable thinker and worker who is dependable, conscientious, and sure, we present you Faye. With an opinion of her own, she bases her conclusions on facts, and when she sets out for results she cannot be delayed.



MARY L. JOHNSTON

MOORESVILLE, N. C.

Poe Society; Hiking Club, '25; Athletic Association; Iredell County Club; A. U. L. L. Club, '25, '26.

*"Funny and friendly,
Generous and gay,
A real good sport
In work or play."*

Mary is a little girl, but, as you've often heard, the most valuable articles are wrapped in small packages. She's a good all-round girl and success is waiting for her just around the corner.



ROSABELLE JOHNSON

SPRING HOPE, N. C.

Lanier Society; Athletic Association; Proctor, '25.

"A loving heart is the truest wisdom."

She's just "terribly nice." Although quiet and reserved, she has an armful of attractive ways. Here, there, everywhere, she's a fine old sport.



ALICE JONES

FAVETTEVILLE, N. C.

Poe Society; Vice-President of Class, '25; Basketball Team, '25, '26; Baseball, '25; Vice-President Poe Society, '26; Assistant Business Manager the *Teco Echo*, '26; Domino Six; Athletic Association.

"Not too serious, not too gay, but a rare good girl when it comes to play."

Wonder what Alice will be doing this morning; Singing "Titina," teasing Ann, or dancing the Charleston? Which ever it is you may be sure she and all the rest will have a good time when she is around. Alice is a dandy good sport and has a "head on her like a tack." If she keeps up her record, East Carolina will receive glorious reports next year.

MARGARET LEE JONES

CLAYTON, N. C.

Poe Society; Proctor; Secretary Junior Normal Class; Vice-President Johnston County Club; Clayton Club; Prophet Senior Normal Class; Senior Normal Representative for *Teco Echo*; K. Y. M. B.'s.

"A perfect woman, nobly planned, to worn, to comfort and command."

Margaret Lee seems demure at a distance but on closer acquaintance we find that the gods have bestowed on her that priceless possession that they give to few—a sense of humor. She is a bundle of talent, ability and originality. She's the stand-by of the Class of '26.



ELLEN JONES

ROANOKE RAPIDS, N. C.



HELEN JONES

GREENVILLE, N. C.

Poe Society.



LOUISA JOYNER

KINSTON, N. C.

Poe Society; Proctor, '25; Marshal, '25, '26; Lenoir County Club.

*"A pretty girl, a witty girl,
A girl so full of fun,
A brainy girl, a carefree girl—
A thousand girls in one."*

Louise is truly that; she has a composite disposition, the best always predominant. She lives each day so that her life is an endless drama, getting as a repertoire, romance, comedy, tragedy and all the rest, thus giving her the opportunity of making the best of existence for those around her—and for herself.



NELL JOYNER

WOODLAND, N. C.

Poe Society; Athletic Association; Northampton County Club.

*"A smile for all, a greeting glad,
A lovable, jolly way she had."*

Nell is always cheerful and happy and looks on the bright side of life. She does not think it worth while to spend all her time studying because she thinks life is just as worth living now as after she has finished school.



RUBYE KILPATRICK

DOVER, N. C.

Lanier Society; Athletic Association; Class Basketball Team, '22; Lanier Society Reporter.

"A sunny disposition is half the battle."

"Pat"'s ways are true, her conduct blameless and her friendship lasting.



MARY VIRGINIA KILPATRICK

SNOW HILL, N. C.

Lanier Society; Athletic Association; Proctor.

"Happiness is cheaper than worry, so—why pay the price?"

Mary Virginia—Well, no common words can describe her. We don't expect them to, because she is our original girl, and, of course, she is different. She is cheerful, she is bright and a happier little girl is hard to find.



ERNESTINE AMANDA KING

AHOSKIE, N. C.

Lanier Society; Hertford-Bertie County Club; Inter-Society Committee, '26; K. Y. M. B.'s.

"She is gentle, she is shy but she has mischief in her eye."

When we glance at "Teenie," we at once pronounce her the embodiment of gentleness and modesty, but as we glance longer we perceive that she is a "fille" of the twentieth century. She possesses the traits which make her admired by all, but especially by one who has fallen beneath her charming ways.



MYRTLE KNOX
HUNTERVILLE, N. C.

Lanier Society.

*"Errors like straws, upon the surface flow,
He who seeks for pearls must dive below."*

Myrtle is one of our girls whom you have to know to appreciate, for she is so quiet and unassuming that her many desirable characteristics are not clearly perceived by the casual observer. We feel sure that when she goes out into the world success will be hers.



ELLINOR LANE
ELIZABETH CITY, N. C.

Lanier Society; Athletic Association; "Pasquotank Tribe."

*"I leave the praises unexpressed;
I leave the greatness to be guessed."*

Ellinor is quiet and faithful to a degree that commands admiration from her classmates; a good lovable girl with a keen sense of humor. If you have known her you will find a worthy companion. She is loved by all who know her for her sweetness of disposition.



MINNIE LEE LANIER
ROSE HILL, N. C.

Lanier; Basketball, '26; Athletic Association, '26; Duplin County Club.

*"A cheerful heart, a cheerful smile,
A charm of friendship all the while."*

Minnie Lee is a jolly, good companion. She is ever happy and meets everyone with a smile. She is very industrious and we wish her much success as a school "Marm." However, we fear she will not teach very long, because—Oh, well, you know why.



SNEEDE LEESON
SPRING HOPE, N. C.

Assistant Cheer Leader of College; Proctor; Johnston County Club; Lanier Society; Athletic Association; Beta Kappa Club.

*"Rare compound of addity, frolic and fun,
To relish a joke and rejoice in a pun."*

"Nuff" said—that's Sneede.





CLARICE LEWTER

SEVERN, N. C.

Northampton County Club; Lanier Society.

"A smile for all, a greeting glad, a lovable, jolly way she had."

Clarice is the type of girl who takes life and its trials in a very cheerful way. She is a girl whom you have to know to appreciate, for she is so quiet and unassuming that her many desirable characteristics are not clearly perceived by the casual observer. Our best wishes follow her as she leaves our midst to pursue her cause of imparting knowledge to others.



MYRTLE LEWIS

STATESVILLE, N. C.

Poe Society; Pitt County Club.

"Precious things are done up in small packages."

Is she a good student? Yes. With her kind and generous disposition she has won many friends. She is always ready and willing to lend a helping hand to those about her. Her gentle, sincere manner will be sure to bring her many successes in the future.



HELEN M. LEWIS

STATESVILLE, N. C.

Poe Society; President of Class, '25; Vice House President, '26; President Iredell County Club; Athletic Association.

*"She's sweet of disposition,
She's loving, wise and kind;
She's full of true affection;
She cannot be defined."*

Helen, one of the most lovable girls in our class, will always be remembered as the girl of the greatest ability in performing any duty assigned her. Let us hope that she will have just as great a success in the future as she has had in her college career.



LUCY ELOISE LEWIS

BREVARO, N. C.

Lanier Society.

"To know her is to love her."

A rare thing it is to find generosity and wisdom in one person. Indifferent as she appears to be, there is no more loyal friend than Eloise; she is unselfish and sincere. Like a book she must be studied to be known, but the result is well worth the effort.

HELEN G. LEWIS
BELMONT, N. C.

Gaston County Club, '25; Poe Society.

"Good natured and slow to anger."

Helen is perhaps the most cheerful and good-natured of us all. She hates no one, and we have never heard her say harm of anyone. Just to make a long story short, she is a good old pal of a mighty good sort.



PRUE LINEBURGER
MT. HOLLY, N. C.

Lanier Society; Athletic Association.

*Prue is true-blue through and through,
With those blue eyes she wins you,
And makes you love her too.*



RAYNOR LONG
SEABOARD, N. C.

Northampton Club.

"Behind her blue eyes there lies a world of mischief."

Raynor, better known as "Willie," wears a cloak of laughter. Let anyone should guess, that which is hidden beneath it—is nothing less than mischievousness.



FANNIE LOWE
RICH SQUARE, N. C.

Lanier Society; Vice-President of Northampton Club, '25; Left-Hand Club, '26; Athletic Association; Baseball Squad, '26; Tennis Club, '26; Hiking Club, '26; Proctor; Treasurer of Lanier Society, '26; Vice-President of Class, '26.

*"When joy and duty clash,
Let duty go to smash."*

Fannie's smile—how can we describe it? Enigmatical, unfathomable and sweet. Her face and figure? Beautiful. Friends? Innumerable. Does Fannie study? We have never seen her do so, yet her brilliant answers would make one think her a genius. She is athletic and graceful; her record as a Lanier Society treasurer speaks for her business ability, though we have reasons to believe that in the near future one of the opposite sex will attend to the business of two.





CHRYPELLE FAYE LUCAS

BENSON, N. C.

Poe Society; Athletic Association; Johnston County Club; Red-Head Club; Y. W. C. A. Choir, '26; Tennis Club, '26.

*"Here's to a girl with a heart and smile,
That makes the bubble of life worth while."*

A good-natured, friendly little girl is Stella. Some folks say she is dignified—and she is sometimes—but a good sport as well, and always ready for a good time, and equally as ready to share it with others.



VIVIAN LUCAS

GREENVILLE, N. C.

Poe Society.



ELVA MANESS

BISCOE, N. C.

Poe Society.

*"'Tis the songs you sing and the smiles that you wear
That makes the sun shine everywhere."*

This is truly fitting for Elva, as she carries sunshine everywhere with her. She is happy and ready for mischief, which can be told by one glance in her eyes.



ADDIE MAE MARTIN

SANFORD, N. C.

Lanier Society; Marshal, '26; Critic Senior Normal Class.

*"Not too serious, not too gay,
But a rare good fellow
When it comes to play."*

When you find a regular girl who is a good sport—she is worth knowing. Such is "Mae." Her lovable disposition has won her many friends. She never tells us much about herself; but whatever it is or wherever she is, it will be a "lucky corner" that is filled by Mae.

MYRTLE MASON

ATLANTIC, N. C.

Poe Society; Y. W. C. A. Choir.

*"God made a heart of gold,
Shining and sweet and true;
Gave it a home of fairest mold,
Blessed it and called it you."*

Myrtle is a girl of high ideals and perseverance, clear-thinking and noble acting, a good student and, best of all, a good friend.



THELMA RAE MASON

ATLANTIC, N. C.

Poe Society.

*"But in a sieve I'll thither
Sail, and like a rat
Without a tail, I'll do,
I'll do, and I'll do."*

Let come what will and come what may, Thelma Sue, as she is commonly known, is always ready to help. In spite of her few faults, she is a dandy good sport and an excellent girl.



MILDRED MATTOCKS

GREENVILLE, N. C.

Lanier Society; Secretary of Pitt County Club, '25.

*"Sweet, true and always kind,
A better pal no one could find."*

"Milly" has always proved herself to be a fine, true girl and when it comes to her studies she is noticeably hard to beat. She is a good sport, a good student and a good pal. With her winning smile and cheerful greetings she makes the bubbles of life worth while. We predict for her a great future.



MYRA MAYO

WASHINGTON, N. C.

Lanier Society; Beauco Club.

*"She is honest and true
And always true-blue."*

It can be said of Myra that she is studious and conscientious. She is kind and always willing to lend a helping hand. No one who goes to her for anything is turned down. She is determined to make a good teacher, and we are sure that she will.





LOTTIE McCLENNY

GOLDSBORO, N. C.

Lanier Society; Y. W. C. A. Choir; Basketball Team, '26; Baseball Team, '25, '26; Wearer of Letters, '25, '26; President Athletic Association, '26; Track Team, '25, '26; Wayne County Club, '26.

"A loving heart is the truest wisdom."

A good disposition, cheerful smile, and plenty of fun and pep has Lottie. She's an athlete of the best kind and has won distinction on the athletic field. You see Lottie has a way that you must admire.



HOMISELLE McCORKLE

SALISBURY, N. C.

Poe Society.

*"Age cannot wither her,
Nor custom stall her infinite variety."*

"Homie" came to us from *William and Mary*. Attractive in manner, cheerful, with an unusually strong and winning personality, we are proud that she finally settled down in East Carolina. In her we have a brainy girl, who has a host of friends.



SADIE REE McJOY

MOORESVILLE, N. C.

Poe Society; Iredell County Club; Athletic Association.

*"She is gentle, she is shy,
But she has mischief in her eye."*

Sadie Ree goes about her tasks as though they come natural, and her little worries soon vanish to give room for all things great and good that makes one's life great.



MARY KATE McKERNON

SANFORD, N. C.

Poe Society; Athletic Association; Basketball Squad; Tennis Club; Baseball Club; Wearer of Letters.

*"Should you make a search, you could not find
A girl more attractive, sweet, and so kind;
She counts her friends, yes, by the score,
And wherever she goes, she will make many more."*

Kate, "the line shooter," is a good ol' pal for all that. She's there on the spot whenever she's needed, and you're mighty right, she's wanted.

EVA McLEAN

MAXTON, N. C.

Poe Society; Robeson County Club; President of L. A. C. Club, '26; Athletic Association, '26; Class Baseball Team, '26.
"Sweet, true and always kind; a better pal no one could find."

Eva is a good sport whom everyone may depend upon doing the right thing. She possesses a wonderful personality which leads you to love her, for by her winning ways she has won a place in the heart of everyone who knows her.



ETHEL McCORMICK

LAURINBURG, N. C.

Lanier Society.

"Not failure, but low aim is crime."

Ethel is a friend indeed and lives up to her motto for she has a high aim, and we feel sure she will succeed. To have Ethel for a friend is to have one that is loyal and true. In school she is an excellent student, and out of school she is a good sport in every way. She is absolutely true-blue and we count it a great privilege to know her.



KATHERINE McKENZIE

WILMINGTON, N. C.

Poe Society; Athletic Association; Vice-President L. A. C. Club, '26; Class Baseball Team, '26.

*"If she will she will and you may depend on it;
 If she won't, she won't, and that's an end on it."*

Katherine is a quiet, lovable girl and is always ready when duty calls her. Yet, when duty is done, she is ready for play. She is dependable, ambitious, frank in her opinions and a good friend to have. Her classmates expect to hear great things of her in the future.



DORIS McKEY

MOORESVILLE, N. C.

Poe Society; Hiking Club; IredeU County Club; Athletic Association; Wearer of Letters; A. U. L. L., '26.

"Ready in heart and ready in hand."

Doris may be serious, glam, or gay, but still she's a rare good pal in a rare good way. She is ever a good sport and a remarkable friend and one upon whom you can always depend.



ANNA TAYLOR McNEILL
KINSTON, N. C.

Poe Society; Marshal, '26; Lenoir County Club; Domino Six.

*"She's a dainty wee thing,
She's a winsome wee thing,
She's a bonnie wee thing—
This dear little 'Moc' of ours."*

Popular? Oh, my yes! As you can easily learn by looking either above or below this inadequate paragraph. Teachers love her as well as classmates; in fact, we all think "Anne T." so very angelic that we have a lurking fear that she will some day "take wings" and leave us far behind.



RUBY MENIUS
MOORESVILLE, N. C.

Lanier Society; Iredell County Club; Athletic Association.

"Modest and gentle, but purity shines clearly from her sweet countenance."

Ruby on first acquaintance possesses a very quiet, gentle and dignified reserve, yet she is very alert and always ready for fun. She is a true friend—one that anybody would be proud to claim. What greater compliment could he paid her?



DOROTHY MAE MIDGETT
RALEIGH, N. C.

Lanier Society; Wake County Club.

"She mixed wisdom with pleasure and reason with mirth."

"Dot" is a very lovable girl. She has a very jolly and amiable nature that wins friends for her wherever she goes. Whenever she comes into a room, she brings sunshine with her and cheers everyone with whom she comes in contact. She is herself a collection of the best things. "So earnest in her work and fun, we know not half the work she's done." We expect great things of "Dot" in the future.



FRANCES MITCHELL
DRAFER, N. C.

Poe Society; H. C. C., '25; H. D. D., '26; Red Head Club, '26.

*"Rare compound of quality,
Noble and true,
A plenty of wit and good sense, too."*

Who would think that "Frank" with her laughing brown eyes and curly red hair was a "dignified" first grade teacher? But that's the delightful part about "Frank." She's brimful of fun—and a splendid sport when it's time for play—but on serious occasions we see the graver side of her nature—her willingness for work, good judgment, and power of concentration. Good luck, ol' girl, and remember everybody believes in "Frank-ness."



PAULINE MOORE

BURLINGTON, N. C.

Athletic Association; Proctor, '26; Secretary of Class, '26; Poe Debater, '26; Krammers Club, '26.

"Where teats meet, sparks fly."

"Jack," with her charming personality, is an inspiration to all with whom she comes in contact. With her sunny smile and mirthful ways she'll drive "old man-gloom" away and leave you free to enjoy the tender blessings of happiness. What more could we ask of anyone? Best luck, old pal, may you reach your desired goal, and scale the ladder of success.



BLANNIE REA MORRIS

SUNBURY, N. C.

Poe Society; Proctor.

"True to her word, and her work, and her friends."

The old saying that the first impression is everlasting is not suitable in this case. For to know Blannie is to love her. She is funny because she is so entirely unconscious of having said anything out of the ordinary. She never says so much, but she looks it all.



ROMA DARE MORRIS

ATLANTIC, N. C.

Poe Society.

*"Her joy is as deep as the ocean;
Her troubles as light as its foam."*

Roma is a good, grand old girl and very lovable. When one has won her friendship she has won something worth while. Her loyal friendship, her frank, sincere spirit, make her one of "Gold and White's" proudest possessions.



SADIE NEAL

REIDSVILLE, N. C.

Lanier Society; Y. W. C. A. Cabinet; Athletic Association; Granco Club; Tennis Club; Proctor, '24, '25; Baseball Squad; Y. W. C. A. Choir.

*"Refined, jolly and demure,
A charming girl you may be sure;
One on whom you can depend
To be a faithful, sincere friend."*

Sadie is studious and of a kindly disposition. Although she is a conscientious worker, she still believes in fun and all varieties of sport. She is noted for having her own opinions, and sticking by them "til death do us part."





EULA MAE NELSON
GREENVILLE, N. C.

Poe Society; Pitt County Club, '25.

*"Not too serious, not too gay,
But a good pal in every way."*

Bubbling over with laughter—that's "Nelly." It is spontaneous, it is irresistible, that jolly laugh of hers. She is planning to be a school "ma-am," but these specials from "Duke" don't seem to back up her plans. But whatever she will be she is the grandest "pal" anyone can have.



GERTRUDE MARYAN NEWSOME
ORIENTAL, N. C.

Lanier Society; P. C. Club; Proctor.

*"She is gentle, she is shy,
But she has mischief in her eye."*

Do you know Gertrude? Well, you have heard her because her tongue is her most active organ, and without it she would surely "pass out." She is gentle and kind and has friends galore. Gertrude has the reputation of being too "frank"; but we hope she'll overcome this some day. We believe she left her love in Oriental and anticipates going back there sometime. Luck to you, Gertrude.



ELIZABETH NEWSOME
GOLDSBORO, N. C.

Lanier Society; Goldsboro Club.

"There is nothing lacking—she is true and sound."

"Lil" has the ability to do anything well that she undertakes. It is a known fact she likes a good time, but when time to lay aside frolic has come, there are few who can beat her at good hard work. Such a rare combination is to be commended.



JENNIE LILLIAN OLIVER
POLLOCKSVILLE, N. C.

Lanier Society; Proctor.

"A loving heart is the truest wisdom."

In Jennie we have a good dependable student, always considerate and willing to help others. She is just the natural girl who has many qualities that go to make up a well-rounded character. In her, our school is sending out a loyal and staunch supporter.

BEULAH PHYLLIS O'NEIL

OCRACOCKE, N. C.

Poe Society; Hyde County Club.

*"She's sweet of disposition,
She's loving, wise and kind,
She's full of true affection;
She cannot be defied."*

"Beux" is her nickname, but "Jolly," it should be, for this word describes her, as she is always jolly with something to tell. She has a pure heart and a noble mind, a better pal no one could find.



BESSIE OWENS

FOUNTAIN, N. C.

Lanier Society; Edgecombe County Club; Athletic Association.

*"She is not a 'Comedy of Errors,'
Nor 'A Midsummer Night's Dream,'
But take it 'As you Like It,'
She is just what she seems."*

Although she has a quiet and dignified manner, she is always ready for fun. Bessie is a very studious girl, and always ready to help others.



MARY HOLLIE PARKER

LASKER, N. C.

Poe Society; Northampton County Club.

"And underneath it all lies a heart of purest gold."

Hollie has a lovable disposition. She is dependable, cheerful and loyal, a girl with high ideals and she is capable of assuming much responsibility. Since she has been a student at East Carolina she has shown that she is competent of doing things. We all know she will be a success as a teacher.



MILDRED PATE

NEW BERN, N. C.

Lanier Society; Athletic Association; Staff Reporter.

*"An open-hearted maiden,
True and pure."*

She is always faithful to her duty, and true to those with whom she makes friends. With these traits we wish her great success in her teaching career.





SARAH C. PATRICK

GASTONIA, N. C.

Poe Society; Athletic Association; Gaston County Club.

"Her heart is in her work."

Sarah is one of those good, steady, dependable girls who can always be relied upon in whatever she undertakes. She is happiest when teaching a class of first grade children, and that is what she plans to do next year. Because of the ability she has shown as a teacher, and pleasing disposition, she is bound to succeed wherever she goes.



ELIZABETH PAUL

PEMBROKE, N. C.

Lanier Society; Robeson County Club; Athletic Association; Social Director L. A. C. Club, '26.

*"Divinely tall, and full of grace,
Surely you know this maiden
With the lovely face."*

"Lib's" hair is not more sunny than her smile. No situation is too trying for her. She is always calm, serene, dignified and generous. She is very studious and at her post of duty on time, every time. To know her is to love her.



GRACE PETERSON

VANCEBORO, N. C.

Lanier Society; Athletic Association.

"None but herself can be her parallel."

Grace wins the love and admiration of all who come in contact with her. Her quiet dignity, her sweet and unselfish disposition, and her noble ideals combine to make a character which is indeed worthy of a true girl. We do not need to prophesy success her every characteristic foretells it.



ALLIE RAE PAUL

EDWARD, N. C.

Poe Society; President of the Beano Club; Athletic Association.

"Behind those brown eyes there lies much mischief."

There are many people who think she is quiet, but those of us who know her will surely deny it. Quiet and reserved in appearance, she is as good a sport as can be found. She never fails to help a friend in need. Here's to you, Allie Rae, you'll surely succeed.

NAOMI PETERSON

PARKERSBURG, N. C.

Poe Society.

"Life is real, life is earnest."

Her manner is quiet and dignified, and her deep brown eyes suggest a serious conscientious mind. Naomi is a good student, always at class on time and preparing her lessons day by day. Though talkative she isn't a chatterer, but talks interestingly and sensibly. You should hear her tell about a picture she has seen or a story that she has read.



DORA PHELPS

BELHAVEN, N. C.

Poe Society: Beaufort County Club.

*"Sweet, true, and always kind,
A better pal no one can find."*

Dora is a very sweet girl and full of fun.



ELLIE PHIFER

MARSHVILLE, N. C.

Poe Society: Assistant Editor of THE TECOAN, '26; Class Editor, '25; Union County Club.

*"She's kind, she's modest, sincere and just,
More studious, more generous than most of us."*

Steadiness, pluck and determination fit Ellie exactly. By her helpfulness, her friendship, and her cheerful manner she grows in the hearts of all. Her words, sometimes softly spoken, carry weight because of the personality behind them. She's a true representative of the best things of life, and as human and fun-loving as any of us.



ANNIE PHIPPS

GIBSONVILLE, N. C.

Lanier Society.

*"If ever she knew an evil thought
She spoke no evil word."*

Annie was ever a friend to all who came her way and was always ready to help us and cheer us on our way. We wish you the greatest of success in your work and may "Dame Fortune" be ever with you, but may her daughter, "Misfortune," never come near you.



BLANCHE L. PIERCE
PIKEVILLE, N. C.

Lanier Society; Wayne County Club; Proctor.

"Blanche smiled, and all the world was gay."

You may search the world over, but you will never find another like Blanche. She is true-blue and we count it a privilege to have her as one of our friends. A sweeter girl cannot be found. She goes about with a smile of happiness and content which she shares with everyone. She's a friend worth having.



MARY LEE PITTMAN
GREENVILLE, N. C.

Poe Society.

*"Sometimes we find hearts that are big,
Always willing to give their all;
In the heart of this girl we find
Ideals that will never fall."*

The friendliest friend on the campus—that's "Pitt." There's comfort and kindness in the ready twinkle of her eager eyes. "As welcome as sunshine in every place, so is the beaming approach of her good-natured face." She is not only a friend in deed, but a friend in need; thus we are loathe to bid her good-bye.



FRANCES HOKE POLLOCK
KINSTON, N. C.

Poe Society.

*"Sweet, true and always kind,
A better pal no one could find."*

A sympathetic interpretation of human nature, charm of personality and unselfishness unite to make "Polly" a success in human relationships. Her strength of character, her perseverance, together with a firm determination, have fixed her in the hearts of her classmates, and they will ever remember her as a friend sincere and true.



PHILADELPHIA HOSEA POPE
FAYETTEVILLE, N. C.

Poe Society; Proctor, '25; Vice House President, '26; President Senior Normal Class, '26; Red Head Club, '26; Domino Six, '26.

*"You'll always find her true and just,
A girl whom all will love and trust."*

You'll find "Dell" on the spot when there is a good time to be had. She isn't quiet—yet—she isn't loud. Yes, that's true—you'll find her if you need advice, too.



JOSIE PEARL PROCTOR

SHARPSBURG, N. C.

Poe Society; Proctor, '24, '25; President Edgecombe County Club, '25, '26; Athletic Association; Kramer Club.

*"I pin my faith to no man's sleeve,
Have I not two eyes of my own?"*

Some are born with beauty and some with brains, but it is seldom that we find them both in one person. "Jodie Britt's" sparkling blue eyes have effect upon all those about her, and just one of her smiles forces the gloomy person to say, "Be gone, dull care, I'll have none of thee." She is known as a true sport wherever we find her. She is a link in the chain which binds us together and we could not have been complete without her.



ETHEL PREVATT

BUIES, N. C.

Poe Society; Basketball Team, '25, '26; Captain Basketball Team, '25; Treasurer I. A. C. Club, '26; Robeson County Club, '25, '26; Athletic Association; Hiking Club, '25; Captain of Olympian Athletic Society, '26; Wearer of Letters, '25, '26; Captain of Baseball Team, '25; Track Club, '25, '26; Tennis Team, '25, '26.



RAMONA RAY

GREENVILLE, N. C.

Lanier Society; Treasurer of Pitt County Club, '25, '26.

*"Beauty, refinement and friendliness,
Three in one—that's 'Mona'."*

Mona is one of the most attractive girls in our class and is renowned, not only because of her fairness but because she possesses so many sterling qualities. She is the kind of girl that can make sunshine in life's darkest places. We predict for her a successful future in the teaching profession.



LESSIE REEL

GRANTSBORO, N. C.

Lanier Society.

*"If wisdom's ways she wishes to know,
Five things she observes with care,
Of whom she speaks,
To whom she speaks,
And how, and when,
And where."*

Lessie's favorite pastime is watching for the postman, but just the same, she always makes good.



MAE RICE

STONEWALL, N. C.

Poe Society.

"Nothing endures but personal qualities."

Mae came to us her Senior year from Cullowhee State Normal. Though she has been with us only a while, we have found in her those things which make a real character. Mae wins the love and admiration of all who come in contact with her. Her quiet dignity, her sweet disposition, and her noble ideals combine to make a character which is indeed worthy of a true girl.



VERLA RICHARDSON

MONROE, N. C.

Lanier Society; Union County Club.

"Ye shall know her by her smile."

Quite so. Verla has a smile for everyone. Some may think her dignified. So she is, but just the kind of dignity to win the respect of one and all. Never too busy is she to stop and help others. She'll help in anything but Math. When it comes to that she looks up with that smile and says, "Me don't know." Verla is a girl who does and will win bushels of friends. She is a girl who is out to succeed and watch what I say, "She will do it."



IRENE RIDDICK

ELIZABETH CITY, N. C.

Lanier Society; Athletic Association.

"Honor lies in honest toil."

She is always prompt and true to her word; independent and self-reliant.



RUBY LOUISE WOODROOF

ROANOKE RAPIDS, N. C.

Lanier Society; D² Club; More Eaters Club; Halifax County Club.

"Quiet in appearance with motives unknown."

To appreciate her is to know her well. She works untiringly, always letting work come before pleasure, but in the end she reaps her just reward. She is an earnest student and we feel that the way to success is known to her.



HILDEGARDE ROBERTS

MOUNT OLIVE, N. C.

Lanier Society; Wayne County Club.

"If she will she will, but if she won't, she won't."

Girls have you ever been "strolling" with her? Try it sometime and see if we don't know that "if she will, she will, but if she won't, she won't."



LEOTA ROBINSON

ATLANTIC, N. C.

Lanier Society.

*"She's lucky, she's kind, sincere and true,
Quite studious, more generous, than any of you."*

A happy disposition is a great blessing indeed. Leota is not only happy herself but with her bright smile and friendly manner she has certainly been a ray of sunshine, illuminating the life of everyone with whom she comes in contact. Her ambition is to journey through life with a smile and never grow old.



MARGARET ROBINSON

GOLDSBORO, N. C.

Poe Society; Social Chairman N. G. F. Club; Athletic Association.

"Do you love life? Then live around a friend."

Margaret is a jolly, good old sport, plenty of pep, and as helping a hand as ever you meet. She is one who feels that, "when worry means death she will live forever."



WILLIE LEWIS ROBINSON

RIDGEWAY, N. C.

Lanier Society.

*"She's lucky, she's kind, sincere and true,
Quite studious, more generous than any of you."*

Willie is a quiet girl, but one in whom quietness is admired. She lends a helping hand to everybody. Her ambition is to be a school "marm" in Franklin county.



MARY ROBINSON

MORVEN, N. C.

Lanier Society; Proctor; Athletic Association.

"The way to have friends is to be one."

Sure, and it's always a friend you'll have with many around. She is a rare combination of good humor and hard work; a girl to be liked for her charming personality. Wherever she roams she will carry with her the sincere wishes of each and every member of the Class of '26.



LESSIE ROSE

NASHVILLE, N. C.

Poe Society; Proctor.

"To know her is to love her."

Quiet and reserved is Lessie, and we agree that if "Beauty is as beauty does" she, too, is quite beautiful. She is a faithful and capable worker. Her actions are always from honest motives and mindful of her fellow man. We have all learned to love her.



NANNIE LEIGH ROYSTER

BULLOCK, N. C.

Lanier Society; Athletic Association; Proctor; Secretary of Granville County Club.

"Whistling, laughing, or singing a song, happy and content she joys along."

"Nancy" is a sweet old girl, and is loved by everyone who knows her. She is studious but not a book worm, because she's always ready for fun. She is inclined to be mischievous, but is so innocent-looking she never gets caught.



INDIA EARLE ROUSE

DILLON, S. C.

Poe Society; Proctor.

"To be loved is all I need, and whom I love, I love indeed."

Happy-go-lucky girl! Seldom worrying over anything! One might think she was very quiet and dignified by only seeing her in the classroom, but that is only the face she wears while obtaining knowledge. Always kind and sympathetic, everybody's buddy, that's her nature.



ELOISE SASSER

GOLDSBORO, N. C.

Poe Society; Secretary of Wayne County Club, '26; Vice-President of N. G. F. Club, '26; Glee Club, '25, '26; Y. W. C. A. Choir; Wearer of Letters, '26.

*"A smile is a type that is liked by all,
Boys and girls, both big and small."*

*"Just a dear, fine pal
Everybody knows;
Attractive and sweet,
Loved everywhere she goes."*



CLEO GERTRUDE SAULS

CONWAY, N. C.

Poe Society; Athletic Association; Proctor, '25; Northampton County Club.

"Behind those brown eyes there lies much mischief."

Cleo is an all-round sport, and we all just love her. She will be missed when her merry voice and laughter cease to ring in the dormitories for it is she who bears no burden of sorrow. She is so lively that none can resist her, and all are led to happiness and enjoyment.



MAE SEAGROVES

CARTHAGE, N. C.

Poe Society.

"Kind, whole-hearted, faithful, and true."

Mae is a very quiet girl with a big heart, wishing to do right and to be friends with everybody.



ADA BELLE SESSOMS

AHOSKIE, N. C.

Poe Society; Proctor, '25; Hertford-Bertie County Club, '26; K. Y. M. B.'s; Athletic Association.

*"Shall I compare thee to a summer's day?
Thou art more lovely and more temperate."*

A girl with a pair of square shoulders, a pleasing smile and a pair of eyes that look into the faces of her friends with a softness and a sincerity that makes one know that Ada is a true friend, a great companion and an associate in whose presence we maintain just pride.

We are setting out on a road with but detour after detour, but we feel that when we reach the ultimate end of the path, we will find Ada there in all the glory that could be gathered in the course of the long trials.



IRENE SIMMONS

POLLOCKSVILLE, N. C.

Poe Society

"Kind and pleasant, full of fun, loving and thoughtful to everyone—that's 'Simmie'."

Irene is a hard worker and she always meets her tasks and difficulties with a smile. We know that her strong ambition and her sunshiny disposition will bring her to much success wherever she goes.



BLANCHE SMITH

AYDEN, N. C.

Poe Society.



CATHERINE SMITH

RUBY, S. C.

Poe Society; Y. W. C. A. Choir; Athletic Association; Proctor; Sergeant-at-Arms, '26; South Carolina Club.

*"Run if you like and try to keep your breath;
Work like a man, but don't be worried to death."*

If it's primping it's "Cat,"
If it's giggling it's "Cat,"
If it's for fun, skipping classes, dancing, going a-flirting, it's not "Cat."

For all her chatter and nonsense "Cat" is not lacking in brains. We ourselves may be slow-witted, but "Cat" may be depended upon to see through every humorous happening. Behind it all is a true heart.



ISABEL SMITH

RED SPRINGS, N. C.

Poe Society; Robeson County Club; Athletic Association.

*"A pretty girl, a witty girl,
A girl so full of fun,
A brainy girl, a carefree girl,
A thousand girls in one."*

It takes all the above combination to make up this pleasing personality known as Isabel, or to her intimate friends, as "Izzy." You may search the world over, but you will never find another like Isabel.



LOLA ADELINE SMITH

REIDSVILLE, N. C.

Lanier Society; Y. W. C. A.

*"To see her is to know her,
To know her is to love her."*

Here's the girl whom the girls delight in, and the boys all fall for "To know her is to love her." She possesses a strong character and has a very pleasing personality. We wish Lola success in all her work, but we also know that she is not planning to make teaching school her life-time profession.



MILDRED HOLMES SMITH

RUBY, S. C.

Poe Society; Representative to Student Council, '25; House President, '26; Y. W. C. A. Choir; Athletic Association; South Carolina Club, '25, '26.

*"A friendly heart has plenty of friends,
Did I hear you say 'a clever and funny person'?"*

Surely you must have been speaking of "Mickey" for she is one of the existing true wits—besides being a wit, she is a teacher of no mean capacity and a most capable hand at writing lesson plans. Whenever we hear someone talking about A. S. D. C. we always know that "Mickey" is holding forth on her favorite subject.



MARTHA WOOD SPIVEY

RICH SQUARE, N. C.

Lanier Society; Basketball Team; Northampton County Club; Proctor; Athletic Association.

*"A sunshine heart, a 'soul for song,
Love for hate, and right for wrong."*

"Tussie" Wood is all that goes to make an all-round good girl. She is loyal, unselfish, and ready at any time to lend a helping hand. You do not really appreciate her until you know her, and the more you know her the better you like her.



WILLIE LEE SPIVEY

RICH SQUARE, N. C.

Poe Society; Athletic Association; President of Northampton Club, '25; Proctor.

"Some say the world is made for fun and frolic; so do I."

Willie Lee is a good all-round girl. She is a good student, but finds plenty of time for fun. Her heart is as kind as it is mirthful.





LOUISE STANFORD
KINSTON, N. C.

Lanier Society; Lenoir County Club, '25, '26.

*"Kind and pleasant, full of fun,
Loving and thoughtful to everyone—that's 'Wese'."*

To be associated with her means to love her. With her amiable nature she makes friends wherever she goes. She has a pure heart and a very noble mind; a girl any sweeter would be hard to find. We expect great things of her in the future.



RUTH STANTON
STANTONSBURY, N. C.

Poe Society.

"None but herself can be her parallel."

She's the kind of girl you like better every time you see her. Very reserved at first, but when you know her you are astonished to find that she has been your friend all along. Ruth came to us in our Senior year from Cullowhee, N. C. Their loss was our gain and we have found in Ruth a real friend who is true and lasting.



EFFIE ISABEL STRAWN
MARSHVILLE, N. C.

Poe Society; Secretary and Treasurer of Union County Club.

*"Not too serious, not too gay,
But a rare, good girl in every way."*

Steady, clever, conscientious, ambitious, fun-loving, a true friend, a willing worker, a good all-round girl—that's Effie.



NANCY RUBY STRICKLAND
SPRING HOPE, N. C.

*"Sweet, true, and always kind,
A better pal no one could find."*

A ruby is a precious stone, but in this "Ruby" you will find treasure more precious than those in mere stone. She is one of the most lovable, loyal and industrious girls on the "Hill." A sweeter girl cannot be found—she is a friend worth having.

THELMA SYLIVANT

SNOW HILL, N. C.

Lanier Society.

"She's true to her word, her work and her friends."

Although Thelma is quiet and unassuming, there is a limit to the suffering she will endure. She is a diligent worker, a loyal friend and a good all-round companion. So here's hoping you success, and many friends, Thelma.



ELLA TUCKER SMITH

GREENVILLE, N. C.

Lanier Society.

*"She walks the waters like a thing of life,
And seems to dare the elements of strife."*



BETTIE ROSE TAYLOR

GUMBERG, N. C.

Lanier Society; Proctor; Northampton County Club.

*"Happy am I; from care I'm free!
Why aren't they all contented like me?"*

With her lovable, jolly way she wins a place in the heart of everyone. She is ever a good sport and a true friend and always there to do a service for you. It would be hard to find a girl more noble and kind.



MARTHA REBECCA THIGPEN

TARBORO, N. C.

Lanier Society; Proctor; Vice-President of Edgecombe County Club; Athletic Association.

"And she herself is sweeter than the sweetest thing she knows."

We call her "Beck" for short, and you can bet we call her lots, too.





JULIA TOLAR
LUMBER BRIDGE, N. C.

Lanier Society; Robeson County Club; Mathematics Club.

*"A cheerful heart, a cheerful smile,
A charm of friendship all the while."*

In Julia we find a combination of sunshine and laughter: she never leaves her smile behind, because it is a part of her. As to her future—well, there are rumors and rumors, you know—but it could be nothing but bright, whether she enters the teaching profession or some other.



MARY FANNIE TREXLER
WADESBORO, N. C.

Lanier Society.

*"She has a form of fairy grace,
A dimpled, smiling, lovely face.
In her character no blemish you could find,
And her personality will linger on through aeons of time."*

Mary Fannie is an ideal type, for she's witty, intelligent, industrious, cute, pretty, irresponsible, irresistible.



NELLIE TRIPLET
WINSTON-SALEM, N. C.

Lanier Society; Athletic Association; Pals Club; Left-Hand Club.

*"God made a heart of gold,
Shining and sweet and true;
Gave it a home of fairest mold,
Blessed it and called it you."*

Do you know her? Don't you love her? The elements are so mixed in "Trip" that all nature might stand up and say, "This is a woman." Born with the initiative of a leader, she possesses the rare ability of following well. By nature she is artistic and temperamental, yet practical and business-like when occasion demands. She does not court popularity—it is hers without soliciting. Above all, she is a friend to her friends.



MIRIAM TURLEY
CLAYTON, N. C.

Lanier Society; Clayton Club; Johnston County Club.

*"Happiness is cheaper than ivory;
Why pay the higher price?"*

Is Turley popular? Decidedly. Like Postum, "There's a reason." She is a living specimen of personified optimism. She believes in taking everything as it comes and worrying over nothing. She leaves the frowns and cares to someone else; why should she be bothered with them. Your good nature will take you anywhere, Miriam, so "step on the gas."

JULIA JACKSON TYLER

RICH SQUARE, N. C.

Lanier Society; Athletic Association; Representative to Student Council, '26; Northampton County Club; Proctor.

*"A friendly girl, a witty girl,
A girl so full of fun,
A brainy girl, a carefree girl,
A thousand girls in one."*

"Juby Tyler" is never "down and out," but always on the move for something better. She is just serious enough to be loved and mischievous enough to make you keep on loving her. She always has a smile and "Hey" for everyone.



FLORENCE DELIGHT TYLER

RICH SQUARE, N. C.

Poe Society; Athenian; Red-Head Club; Northampton County Club.

"She is of so free, so kind, so apt, so blessed a disposition."

With her pleasing manner and splendid disposition, Florence is a true and loyal friend, one who believes that the way to have friends is to be one.



LOUISE TYNDALL

KINSTON, N. C.

Lanier Society; Athletic Association, '25, '26; Lenoir County Club, '25, '26; Business Manager L. A. C. Club, '26; Proctor.

*"Attractive and sweet
And hard to beat;
Interested and true, and if she likes you, will stand by you."*

Louise has intelligence, determination, endurance, and a keen sense of humor. You need not go further, if it's for a real true pal you are searching.



BERTHA TYSON

SARATOGA, N. C.

Poe Society; Athletic Association.

*"Bertha is just a dear little friend,
With a dimple in her chin,
And with her happy little grin,
She is always sure to win."*

Bertha is a wide-awake, studious girl, liked by all. She loves mischief, and plays many pranks on unsuspecting classmates.



ELIZABETH TYSON

AYDEN, N. C.

Lanier Society; Proctor; Athletic Association; Pitt County Club.

"Life without laughing is a weary blank."

There is a ray of sunshine to be found in the darkest places when Elizabeth is around. She possesses a wonderful personality which leads you to love her, for by her winning ways she has won a place in the heart of everyone who knows her.



MELBA WARREN

BURLINGTON, N. C.

Lanier Society; Athletic Association, '26; Class President, '25; Class Editor of THE TEGOAN, '26; Secretary of Lanier Society, '26; Krammers Club, '26; Tennis Club, '26; Hiking Club, '26.

"You can live without knowledge, you can live without books, But civilized men cannot live without cooks."

Good cooks did you say? You know that's Melba. She evidently knows the way to reach a man's heart to perfection, for she has a "string of admirers" that would reach from here to—er—. Aside from this peculiar gift all her own, Melba is endowed with an unlimited supply of "pen," an inestimable quality of "ready wit" and determination. She is a high-minded student and everybody's friend. Melba is Melba and she's all right! She has proven very efficient in the many offices she has held for the past two years.



MABEL E. WARREN

LITTLETON, N. C.

Lanier Society; Halifax County Club.

*"If ever she knew an evil thought,
She spoke no evil word."*

Always cheerful and gay, that's Mabel. Her winning ways have won her many friends at East Carolina. Her good nature, congenial smile and perseverance combine to make her one of the most loyal of the Class of '26.



ELIZABETH WATSON

HAMER, S. C.

Lanier Society; Member South Carolina Club, '25, '26.

*"She is wise if I can judge of her, and fair she is, if that
mine eyes are there,
And true she is, as she has proved herself."*

*If you've heard of girls with intelligent minds,
If you've heard of girls who are dear,
If you've heard of girls with quiet refinement,
Then this is 'Lib' a friend sincere.*



JOHNNIE WATSON

PINE LEVEL, N. C.

Lanier Society; Athletic Association; Secretary of Johnston County Club.

*"Whistling, laughing, or singing a song,
Happy and contented she joys along."*

A more wonderful personality you would have to search hard to find. She is gentle, kind and thoughtful. This combination of her lovable qualities, together with her winning smile, has gained for her a coveted place among her classmates.



ELLEN F. WEEKS

CLINTON, N. C.

Lanier Society.

"She is always quiet and dignified."

Ellen is one of our quiet, studious girls from Sampson county. She is a very quiet and reserved girl, and those of us who are lucky enough to know her say, "To know Ellen is to love her." She is always sincere, and stands well in her class.



MARGARET WESTON

LAKE LANOING, N. C.

Poe Society.

"A big heart always wishing to do right and be friends with everybody."

The way to have friends is to be one, that is why Margaret has won the friendship of all those who know her.



ANNA WETHINGTON

GRIFFON, N. C.

Lanier Society; Pitt County Club.

*"Impulsive, earnest, quick to act,
And makes her generous thought a fact."*

Anna is a good student, loves a good time and has a merry soul whose mirth is contagious. Her winning ways are true, her conduct blameless, and will hold a permanent place in the hearts of her East Carolina friends.





MARJORIE GENEVIEVE WILLIAMS

CLAYTON, N. C.

Poe Society; President of Clayton Club; Athletic Association; Proctor; K. Y. M. B.

"Love is the perfect sum of all delight."

Margie is hard to beat, as sweet and fine a girl as can be found in the Class of '26. Though a bit mischievous she may sometimes be, her spirit of comradeship and unselfishness has won for her a host of friends at East Carolina. Though she now says that she will teach, we say that she will teach—one—.



EUNICE WILLIAMS

PARMELEE, N. C.

Poe Society; Martin County Club.

*"Sometimes we find hearts that are big,
Always willing to give their all,
In the heart of this girl, we find
Ideals that will never fall."*

With her persistent determination she is bound to win. She is always happy and ready for fun, which can be told by one glance at her eye. Good luck to you, Eunice, and may success be ever yours.



LYDIA MARIE WILLIS

ATLANTIC, N. C.

Lanier Society.

"Character is like a diamond that scratches every other stone."

Lydia is a ray of sunshine, the kind of a girl that makes you feel better when you meet her. Her cheerfulness, continual talking, and singing makes her a noted one in her class. Her ambition is to have a college education and always to be happy.



MARIE WILLIAMS

KINSTON, N. C.

Poe Society; Lenoir County Club.

*"Quiet in nature, jolly in play,
Marie is a dear, sweet girl in every way."*

"Ree" is as quiet and placid as the night breeze. She is always ready to do her duty, and is a girl whom everyone may depend on to do the right thing. She possesses a wonderful personality which leads one to love her.

MIRIAM WILLIAMS

SWAN QUARTER, N. C.

Lanier Society; Hyde County Club.

*"Kind and pleasant, full of fun,
Loving and thoughtful to everyone,
You couldn't find any better
Or sweeter girl in East Carolina
Than dear little Miriam."*



MOZELLE FRANKLYN WORKMAN

HILLSBORO, N. C.

Lanier Society; Proctor.

*"A disposition so sweet and a character so sound,
Beauty so charming and manner so kind,
A better pal, no one could find."*

If it is possible for a girl to have a million admirable qualities, Mozelle has a million of them. Good descriptive adjectives are exhaustible when it comes to describing her.



CATHARINE FISHER

BATTLEBORO, N. C.

Lanier Society; Secretary Edgecombe County Club; More Eaters Club, '24; Proctor, '24.

*"Love her? Well, I guess I do;
Love her mighty fond and true,
Love her better every day,
Dunno why—it's just her way."*

"Kat" has been a member of "our" great family only since Christmas, but in this short while, she has won the love of all who know her. Her dainty, neat appearance and her attractive, winsome manner fill us all with envy, and have won for her the chief place in somebody's heart. All these things are admirable, but the reason we love her is because—well, it's just her way.



OPHELIA FLOYD

FAIRMONT, N. C.

Lanier Society; Robeson County Club.

*"Sweet, true, and always kind,
A better pal no one could find."*

Ophelia is just an "all around" girl whom we love. She possesses the quality of being the same wherever you see her and this wins for her quick and lasting friends. She is always ready for play when her duties are done.



LILLIE FOGLEMAN

HIGH POINT, N. C.

Lanier Society; Athletic Association; Proctor.

*"To see her is to admire her;
To know her is to love her."*

A girl whose ideals claim the highest; a girl whose nature is above reproach; a girl whose friendship is prized by many—such is the girl whose name stands above.



HISTORY OF SENIOR NORMAL CLASS

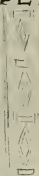
If ye would hear a college story told
By one who loves the golden days of yore,
She spent within the bound'ries fair of that
Beloved school ye call E. C. T. C.,
Then give ye heed to the chronicles of what
Ye will agree to be a class of pow'r
And loyalty, of worthy work, of fun
And mirthful gayety. Such class behold
In the lengthy roll of Nineteen Twenty-Six.
Eleven score were we when eagerly
On September twenty-third we came
To our beloved Alma Mater here,
And enrolled beneath the banner fair
Of the Junior Normal Class, and soon became
Well known, for short, by our class name, the "C's."
We organized our class at last, and chose
Bright Helen Lewis for president.
Thus we began our happy gatherings
And many joys and strange experiences.
All Hallows came around at last; then we
With faces all by dominoes obscur'd
Right merrily went forth to festival.
In previous years it was the custom gay,
For "C's" and "D's" on each Thanksgiving Day
To see whose basketball could win the game.
On the happy day we gathered all our force
Around the court to watch the tournament.
Alas! we did receive disappointment sore,
For the other team was proven stronger far.
The Christmas holidays next passed away,
Then back to work we steadily did go;
And very soon with one accord we chose
Wee Robert Fitzgerald our mascot true.
In full array and peacock proud, we bought

A ring to signify our rank and class,
 And then in social mood, to the "D's" we gave
 Our tickets complimentary, to an hour
 Of beautiful reading by Miss Everts,
 In May our team of basketball redeemed
 Its name, proving the strongest on the field,
 To us thus came the prize—a silver cup,
 And jealous were our conquered foes.
 So June the second brought our closing day,
 And most joyful began vacation days,
 For three long happy moons at home.
 Again, September twenty-ninth, we came
 To this our Alma Mater dearer grown.
 Two hundred now were we. Some returned not
 To take the place they held the year before.
 October—the Touley Opera Company
 Presented under "D" class auspices,
 An opera grand to girls and public, too.
 In that eventful month we chose Dell Pope
 To wear the dignity of president.
 Then during April's gay and happy days,
 A play, we did present with great success.
 Relentless time kept pressing faster on,
 E'er driving hard our college days away
 To distant lands of memory so dear.
 For June the seventh brought Class Day's program
 And swiftly June the eighth arriv'd
 With its dear joy and sorrows sweet entwined.
 This day to us were given diplomas fair,
 We bade to Alma Mater good-byes sad;
 Much longer fain we would have lingered here;
 To stronger calls we turned reluctant hearts,
 For we are bound to the dear and friendly halls
 From whence we bear the fair ensign of truth,
 Which our beloved Alma Mater dear
 Has trusted us to bear for hence throughout
 The land where duty says, "Here ye must serve."

—MAUDE CLAY.



PEP



STYLE



INDEPENDENCE



DIGNITY



KNOWLEDGE

SENIOR NORMAL STATISTICS



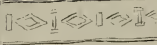
CHARM



LOVE



BEST KNOWN



FUN



WIT

SENIOR NORMAL STATISTICS

LAST WILL AND TESTAMENT OF THE SENIOR NORMAL CLASS

*State of North Carolina,
County of Pitt,
Town of Greenville.*

WE, the Senior Normal Class of 1926, East Carolina Teachers College, being of sound health and disposing in mind and memory; realizing our human frailities and being fully aware that through the hour glass of youth the sand is constantly flowing; knowing that when the last grain has trickled through we too will pass over the Great Divide into another life; full sensitive to the fact that upon our passing there will be some things that must remain, we do declare and publish this, our Last Will and Testament, hereby expressly revoking any and all wills heretofore made by us.

SECTION I

Article 1.—To our Alma Mater we wish to express our sincerest love. We, the Class of '26, wish the fact to be known that we will ever be true to the ideals that have been so faithfully instilled in us during our college life.

Article 2.—We bequeath to our Alma Mater our experience, the best of all teachers, in order that she may use it for the benefit of future seekers of knowledge.

Article 3.—To our parents who have borne the financial burden of all our bills, trips, tuitions, matriculations, etc., we leave our records as model daughters and our ever-present appreciation.

Article 4.—To our faculty, the members of which have toiled so patiently with us through our many trials and guided us hopefully through many a doubtful hour and placed within our reach such an abundance of opportunities, we extend our deepest gratitude.

Article 5.—To our beloved President, Mr. Wright, we leave a promise from the gods, that he may always be youthful in thoughts and spirit and by being so give to our successors the full advantage we have enjoyed.

Article 6.—To Mr. Austin, in appreciation for numerous services he has rendered us, we promise to be ideal teachers, always remembering our aims.

SECTION II

Article 1.—To the Junior Normal class we leave an abundance of note books on all subjects, with an additional copy of the book entitled, "How to Study," by Weno Likee.

Article 2.—To the Freshmen we impart our secrets on how to look pretty, be witty and wise.

Article 3.—To the Sophomores we leave a typed copy (one each) of all rules and regulations to help them remember they have a long road to travel before they reach the pinnacle of privileges, etc.

Article 4.—To the Juniors we leave all our dignities and responsibilities, fully aware of the fact that they will be of use in the near future.

SECTION III

We, the Class of '26, do make and declare the following assignments of personal property:

1. I, Ada Belle Sessoms, leave my bank account which consists of one single "Bill" to Helen Newell.

2. I, Annie Rowe House, leave my surplus pounds of flesh to Helen Stearne, sincerely hoping that she will use them as wisely as I have.

3. I, Frances Mitchell, bequeath my popularity with the student council to any Freshman who thinks she can bear it.

4. I, Jennie Aiken, leave my pen to any Junior Normal student possessing my skill in writing for the *Teco Echo*.

5. I, Margaret Lee Jones, tearfully leave Iola Tankard.

6. I, Dell Pope, leave my incessant blushing to the roots of my hair.

7. We, Iula and Iola Britt, leave our ability to keep everyone guessing (which is which), to any and all twins at East Carolina.

8. I, Mary Emma Bizzell, leave my baby talk to any "C" who thinks she can get away with it.

9. I, Ethel Prevatt, leave my love for sport and my ability as an athlete to Evelyn Cahoon.

10. I, Martha Hassell hereby leave town before anyone who reads the foregoing testations.

—MARTHA HASSELL,
Class Testatrix, '26.

SENIOR NORMAL CLASS PROPHECY

IT WAS the hour of midnight and I, weary with the cares of my position, walked alone in the forest. All unafraid I walked until I came to a large opening where in the center of this space, looking into her cauldron, sat a witch, mumbling magic-like words to herself. Upon hearing footsteps, she turned.

"And what do you want?" she said to me.

"Oh, I have such a responsibility," said I, "I wish to know what has happened to all of my classmates. You see, it has been twenty-five years since last we met and I know not how to start in finding them. Can you not help me?"

"Will you be seated?" she said to me.

Then she began pouring unknown ingredients into the pot and meanwhile chanting the magic words:

"Bubble, bubble, toil and trouble,
Fire burn and cauldron bubble,
In this pot the fates are fixed
Of the members of the Class of '26."

And this is what she told me:

Dell Pope, upon graduation, received many offers of good positions in the teaching world. She taught for a while in the schools of Raleigh but is now Associate Editor of the *News and Observer*. She was surprised to find her friend, Fannie Lowe, as one of the advertising managers.

Melba Warren succumbed to an attack of the heart soon after graduation and they say that the wedding was one of the most magnificent in North Carolina. Her former roommate, Ursula Bateman, was maid of honor, and several of the Class of '26 were present at the wedding. Among them were Jennie L. Oliver, Mary E. Bryan, Elizabeth Newsome and Josie Proctor.

In 1945, the *Teco Echo* published the following news: "Friends of East Carolina will be glad to know that Miss Linda Cobb has been elected to the Chair of Bible of the Southern Baptist Seminary, Louisville, Ky. Misses Frances Mitchell and Betty Bond are teachers of evangelistic work in the same institution."

Ada Bell Sessoms is quite happy as chief of the fire department in Norfolk, Va. Alice Jones is assistant fire chief and prominent members of their company are Anna McNeill, Mary E. Bizzell, LaRue Floyd, Eloise Sasser, Martha Spivey and Louise Bell.

Effie Strawn is county superintendent of the Pitt County schools. Ellie Phifer and Leathea Bazemore are office assistants to this all important woman, and Elva Maness, Myra Mayo, Catherine McKenzie, Willie Robinson, Lessie Rose and Mae Rice are under her employment.

It is particularly interesting to find out about Martha Hassell, Josie Early and Genevieve Baucom. It is well known that they have experimented for years on the best methods of teaching mathematics. They have finally decided on the best ways and are all prominent members of the faculty of Caswell Training School.

Mildred Smith is now on the stage, playing as double to Mrs. Beckwith. Hildegard Roberts, Clyde Hooks, Eula Mae Nelson, Margaret Weston and Mabel Warren are members of the same company. They are widely known and are very successful players.

Gertrude Newsome is serving a term as Mayor of Franklin, Va. Her town clerk is Nellie Triplett, and her chief adviser is Miriam Williams. Lydia Willis is foreign representative.

Pauline Moore, Julia Tyler, Helen Edwards, Elfrieda Gouger and Frances Herring have finally succeeded in getting in the Barnum & Bailey Circus. They are listed to appear in Greenville sometime soon.

Edna Love is a prominent lawyer of Burlington, N. C. She has recently won out in a case in which Virginia Hicks, Nannie Lee Royster and Ellen Hines were tried for placing their weiner and barbecue stand on the main thoroughfares of that city.

Ethel Prevatt, who holds the title of being the world's lightweight champion, and her traveling companion, Lottie McClenny, are now touring the Orient. From recent letters we learn that they were overjoyed at meeting Eloise Lewis, Mary Virginia Kilpatrick, Chrystelle Lucas, Ellen Jones, Florence Hicks and Leona Jarvis who are tobacco saleswomen and at present are in India.

Also from China and Africa we hear that a large number of our class are teaching the "heathen Chinese." They are: Mary Margaret Hudson Homoselle McCorkle, Minnie Lee Lanier, Myrtle Knox, Lillie Fogleman and Rubye Kilpatrick.

Annie Rowe House was successful in her profession, but she was soon captivated and is living a life of happy captivity near Clayton.

Prue Lineburger has recently announced her candidacy as next governor of Iowa. Annie Lee Howard and Catherine Fisher are her campaign managers.

Emma Bennett, Frances Barringer, Iula Britt, Mae Seagrove, Roma Morris, Hilda Hare, Mary Beverly, Myrtle Lewis and Mildred Mattocks are Shakespearean interpreters, specializing in "As You Like It."

Louisa Joyner, we hear, was the leading lady in the late Broadway hit, "Take Me Now or Never."

Jennie Aiken, one of the idle rich at Miami Beach, has in her employment Julia Felton as chauffeur; Elizabeth Johnson, captain of her private yacht, running chiefly from Miami to Cuba; Hettie Braswell, Jessie Bazemore, and Margie Caldwell, interior decorators; and Sue Bryan, Izona Currin and Ophelia Floyd, skin and beauty specialists.

Frances Pollock is now editor of *Fashionable Dress* and her shop models are Hattie M. Pitt, Grace Peterson, Ruth Stanton, India Rouse, Margaret Robinson and Ramona Ray.

Marjorie Williams is enjoying the contentment of married life.

Pat Baggette, Carrie Lee Arnold, Lelia Bullock and Eloise Credle are prominent in our papers just now as dashing divorcees.

Pauline Currin, Blanche Fitzgerald, Lois Dalrymple, Ora Bright, Iola Britt and Mildred Boyette all took to the hills and are popular bootleggers of that section.

Maude Clay has just completed a ten-volume history of North Carolina. She is to succeed Miss Sallie Joyner Davis at East Carolina Teachers College.

Ann Dellinger is running as the fat lady in Sparks Circus.

Bessie Abbott and Ethel Everett are joint owners of a ranch in Wyoming, and their helpers are Christine Adams, Eula Collier, Irene Etheridge and Ruth Bryant.

Mary Colson, Kathleen Griffin, Lucy Hanks, Bessie Owens and Clarice Lewter have gained a vast fortune from selling their new compound which makes the hair curl naturally. After using this compound for several times Blannie Morris, Helen M. Lewis, Faye Johnson, Minnie Hart, Mae Midgette, Leota Robinson and Orphie Rogers were able to join the Ziegfeld Follies.

Catherine Smith, Mae Martin, Ella Tucker Smith and Annie Phipps have charge of an Old Maids' Home in Richmond. They expect Mary Lee Pittman

to join them soon because she says that being animal tamer in a New York zoo is too much for her at her age.

Sadie Neal, Kate McKernon, Ethel McCormick and Myrtle Mason are Salvation Army lassies, while Cleo Sauls, Mary Robinson and Lola Smith are well-fare workers and especially interested in convicts.

Ruby Menius and Sadie R. McCoy are the inventors of the new "Last-a-Week" paint so popular with the girls just now.

"Teenie" King and Catherine Grantham are walking advertisements of before-and-after-taking Dr. Barker's exercise. Miss Grantham sings her praise of this wonderful invention.

To the centennial celebration of East Carolina Teachers College last year came many of the '26 graduates. Among the gifted orators were Rev. Elgia Hocutt, pastor of Buies Creek Baptist Church; Prof. Eleanor Lane, professor of geography at Asheville Normal; Hon. Nell Joyner, prominent lawyer of Raleigh; Dr. Mary Moye Carper, world-wide known as the only real doctor for heart disease. Willie Lee Spivey, of Louisburg College, opened the centennial occasion with a prayer. She brought her family with her.

Among other members of our class who came back to their Alma Mater were: Dovie Burnett, gym teacher at Saratoga High School; Annie Bell Daughtry, junior leader of the Swathmore Chautauqua; Maude Carter, trained nurse of the Bellevue Hospital, New York City; Betty Rose Taylor, Alline Thomas and Pearl Freeman, bareback riders of Ringling Brothers Show; Doris McKey, chief of police at Mooresville, N. C.; Elizabeth Evans, Edna Davenport and Reba Howard, returned missionaries from China; Julia Toler and Louise Tyndall, African distributors of Hoyt's Select Perfume; Anna Wethington, leading photographer of Greenville, succeeding Baker; Rebecca Thigpen and Elizabeth Watson, managers of a cleaning and pressing club in Wilson. Mozelle Workman succeeds Miss Morton as lady principal and is now teaching the dear girls the blessings of dignity.

When she had spoken the last word, I sat very still, hoping that she might tell me some little something about myself—but no—just then I was aroused by someone coming down the hall and singing as though 'twould burst their lungs, "Don't Wake Me Up, Let Me Dream." Also a sudden shake on the shoulder and a quick voice saying:

"Pray, get up. Will you sleep all day? Don't you know that it is now ninety-three and we are to practice our class exercises at ten?"

Upon looking up, I saw my roommate, and after collecting my thoughts I decided that it was only June 7, 1926, and tomorrow was graduation—I had been dreaming.

—MARGARET LEE JONES, '26.

SILHOUETTE

The sky-line melts from russet into blue,
Unbroken the horizon, saving where
A wreath of smoke curls up the far, thin air,
And points the distant lodges of the Sioux.

Etched where the lands and cloudlands touch and die
A solitary Indian tepee stands,
The only habitation of these lands,
That roll their magnitude from sky to sky.

The tent poles lift and loom in faint relief,
The upward floating smoke ascends between,
And near the open doorway, gaunt and lean,
And shadow-like, there stands an Indian chief.

With eyes that lost their lustre long ago,
With visage fixed and stern as fate's decree,
He looks towards the empty west, to see
The never-coming herd of buffalo.

Only the bones that bleach upon the plains,
Only the fleshless skeletons that lie
In ghastly nakedness and silence, cry
Out mutely that naught else to him remains.

—TEKAHIONWAKE.

JUNIOR





KENNETH LANE HENDERSON
Mascot of Junior Class

If any class has a mascot that's better
In any quality that you may name,
Won't you please let us see him, for ours
Is the best on the campus, we claim.

"Like father, like son," is the saying,
And this case, it's true, for the lad
Has affection of the Juniors, that only
Is rivaled by that for his Dad.

We are proud of our class now, and we think
That Kenneth to spur us ahead,
We can do greater things for the college
Than we could, had we not known this lad.



JUNIOR CLASS

COLORS: *Blue and Gold*

FLOWER: *Pansy*

MOTTO: "*Esse Quam Videri*"



OFFICERS

GLADYS KILPATRICK	<i>President</i>
ELLA FLEMING	<i>Vice-President</i>
LAURA SLOAN	<i>Secretary</i>
EMMA JACOBS	<i>Treasurer</i>
ZILPAH FRISBIE	<i>Critic</i>
HORTENSE MOZINGO	<i>THE TECOAN Representative</i>
MAMIE COPELAND	<i>Student Government Representative</i>
MAMIE COPELAND	<i>Cheer Leader</i>



VIRGINIA BLOUNT
FAISON, N. C.

Lanier

"She is just the sweetest girl."



ALVERTA BRENDEL
BOONEVILLE, N. C.

Poe

"Success comes through labor."



BEAULAH CARR
ROSE HILL, N. C.

Poe

"Here is one whose heart is noble, whose thoughts are pure, whose deeds are kind, and whose hands are helpful."



MAMIE COPELAND
WOODLAND, N. C.

Lanier

*"A sunshine heart, a soul for song,
Love for hate, and right for wrong."*



ELLA FLEMING
GREENVILLE, N. C.

Poe

*"Efficient in scholarship,
Well I'll say;
A dear little friend in every way."*

ZILPAH FRISBIE
MARION, N. C.

Poe

*"The girl who reins, is the girl who works,
The girl who works while the others shirk."*



NORA LEE GADDY
WINGATE, N. C.

Poe

*"Her happy disposition, her pleasant smile
Have won her friends for many a mile."*



LOUISE GRISSOM
HENDERSONVILLE, N. C.

Poe

*"Here's to a girl who has a heart full of love
and sympathy. A girl any sweeter would
be hard to find."*



MARY HOLT
PINK HILL, N. C.

Lanier

*"A girl so sweet, so generous, true and kind
That many come a friend in her to find
And with it all she has a brilliant mind."*



EMMA JACOBS
ELIZABETH CITY, N. C.

Lanier

*"Sweet, true, and always kind,
A sweeter pal no one could find."*





VIOLA JONES

STEM, N. C.

Poe

*"Not too serious, not too gay,
But loyal and true in every way."*



RUBY KNOWLES

WOODWARD, N. C.

Lanier

*"She's kind, she's modest, sincere and true,
More studious, more generous than most of
you."*



GLADYS KILPATRICK

BREVARD, N. C.

Poe

*"A girl whose capability needs no one to
defend,
The very best of leaders and the truest kind
of friend."*



PAULINE MARTIN

EAST BEND, N. C.

Lanier

*"To know her is to love her,
To meet her will be great,
So here's to the future,
For it has in 'store her fate."*



RUTH MCGOWAN

GREENVILLE, N. C.

Poe

*"Sweet, true and lovable,
A rare combination of fun and wisdom."*

GERTRUDE MERCER
FOUNTAIN, N. C.

Poe

*"Clever, attractive, and never blue,
When you're with her, you're happy too."*



MARY GRAY MOORE
NEW BERN, N. C.

Poe

*"Worth, courage, honor—these indeed your
sustenance and birthright."*



HORTENSE MOZINGO
WILSON, N. C.

Poe

*"There are some girls who can and will not;
There are some who are willing and cannot,
But the friend we all like, is the girl of this
type
Who both can and will help when you ask
it."*



GLADYS PARSONS
NEW BERN, N. C.

*"Perhaps you will find a more capable, deserv-
ing and lovable girl, but I doubt it."*



ELOISE RIGGS
SOUTH MILLS, N. C.

"Of manner gentle; to friends sincere."





LAURA SLOAN
WALLACE, N. C.

Lanier

"Sweet, unassuming, sincere in all she does."



BESSIE SUMERELL
GRIFTON, N. C.

Lanier

"It was not the face made to wear a sunny smile, and the heart to be tender and true."



MILDRED TEAL
McFARLAND, N. C.

Lanier

"Faithful and honest, kind and true, Dates in history will she ever pursue."



GLADYS TINGLE
MERRITT, N. C.

Poe

"A mind to conceive, a heart to understand and a hand to execute."



ELLA WHEELER TUCKER
GRIFTON, N. C.

Lanier

*"If you've heard of girls with intelligent minds,
If you've heard of girls who are dear,
If you've heard of girls with gifts of all kinds,
Then this is 'Wheeler,' a friend sincere."*

EFFIE WEST
STATESVILLE, N. C.

Poe

"Envious of none, and desirous of pleasing all."



MARGARET WILLIAMS
SOUTH MILLS, N. C.

Poe

*"She's a girl that cooks,
She's a girl that sews,
She'll make her way wherever she goes."*





Mary Holt
as
"PETER PAN"

PARTS THEY PLAY



Sadie Grace West
as
"LITTLE ORPHAN ANNIE"



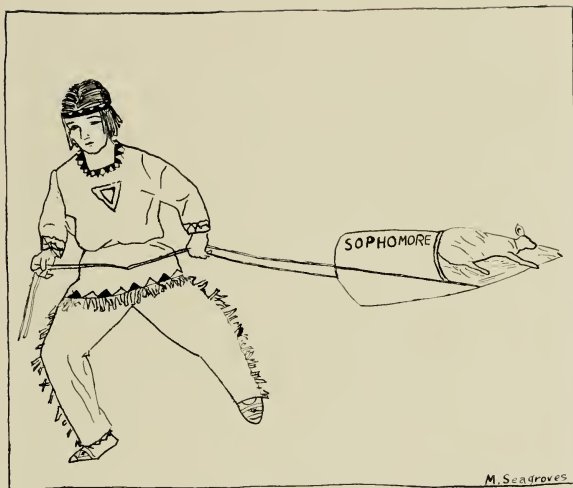
Louise Grissom
as
"TOM SAWYER"



Zilpah Frishie
as
"The GYPSY FLOWER GIRL"



Mamie Copeland & Virginia Blount Gladys Tingle
"KING and QUEEN of the FAIRIES" "WILKES BOOTH LINCOLN"



SOPHOMORE



JEAN HARRINGTON, *Sophomore Mascot*

SOPHOMORE CLASS

COLORS: *Purple and White*

FLOWER: *White Rose*

MOTTO: "*Not failure, but low aim is crime*"



LIVING MONUMENTS

If we can live again when life is o'er,
 Not take again this earthly form of ours,
 But in the minds and hearts of little children
 Our lives need no monuments or towers.

If by our plan of living we succeed
 In giving unto little ones we guide
 Some tiny spark of faith, and love, and duty,
 Then we can rest—our hopes satisfied.

If we can make our world a trifle better,
 And by our living, give to those we've taught;
 Then on cold-faced marble sing our praise,
 But rather, living, by the good we've wrought.

It is a call—a call of little children
 From everywhere, by those whom we hold dear,
 To teach the things of life—of worth and goodness.
 We hear the call and answer without fear,
 "North Carolina, we are here."

—BESSIE WILLIS, '28.

SOPHOMORE CLASS OFFICERS



ANNIE BATTS
Enfield, N. C.
Vice-President

DORALITA LARKINS
Clinton, N. C.
Secretary

LUCILLE BRITT
Clinton, N. C.
Treasurer

BESSIE WILLIS
Goldsboro, N. C.
Poet



ETHEL SPRATT
Dysartville, N. C.
President



RUBY YELVERTON
Black Creek, N. C.
Representative on Council

NANCYE HINSON
Kinston, N. C.
TECOAN Representative

MARY CUMMINGS
Kinston, N. C.
Cheer Leader

CARRIE LEE PEELE
Williamston, N. C.
Sergeant-at-Arms

LUCILE ALLEN
DURHAM, N. C.

VERA WESTER
FRANKLINTON, N. C.

MARY BANKS
GRANTSBORO, N. C.

INA BISHOP
JACKSONVILLE, N. C.

MARY CAMPBELL
SANFORD, N. C.

FANN CAVIN
TROUTMAN, N. C.

CATHERINE CLARK
ELIZABETHTOWN, N. C.

BRONNIE COGDELL
GOLDSBORO, N. C.





BERTHA COOPER
WASHINGTON, N. C.

DOROTHY CURRIN
GREENVILLE, N. C.

LOUISE EVANS
GREENVILLE, N. C.

KATHLEEN FAISON
FAISON, N. C.

SABRA GARRISS
WILSON, N. C.

SARAH GURLEY
GOLDSBORO, N. C.

GOLDIE HARRELL
MOYOCK, N. C.

MILDRED HERRING
CLINTON, N. C.

MARY HOCUTT
CLAYTON, N. C.

LAVA HOWARD
STATESVILLE, N. C.

EVELYN HUTCHESON
RALEIGH, N. C.

RUTH JONES
STEM, N. C.

JANIE BELL JOHNSON
ROSE HILL, N. C.

ANNE KANOY
KERNERSVILLE, N. C.

CAROLINE MACON
HENDERSON, N. C.

RUTH MEWBORN
GRIFTON, N. C.





ANNA OUTLAND
WOODLAND, N. C.

MILDRED PETWAY
ENFIELD, N. C.

ROSINA PITTMAN
SCOTLAND NECK, N. C.

MARY BELLE ROBESON
ROBERSONVILLE, N. C.

NINA RUTH ROUSE
KINSTON, N. C.

RUTH RHYNE
BESSEMER CITY, N. C.

JULIA SATTERTHWAITE
PACTOLUS, N. C.

MARGARET SHAW
ROCKY POINT, N. C.

ALMA SMITH
LEMON SPRINGS, N. C.

DELMA SMITH
FARMVILLE, N. C.

ELIZABETH SMITH
HENDERSONVILLE, N. C.

MARY LOUISE TURNER
SMITHFIELD, N. C.

IDA TOWNSEND
FAIR BLUFF, N. C.

INEZ VAN DYKE
GREENVILLE, N. C.

LILLIAN TRIPP
AYDEN, N. C.

LELIA ASKEW
WOODLAND, N. C.



THE PLACID SOPHOMORE

With a book in my lap and in my hand a flower,
 Thus I sat by my window during study hour.
 I saw how the Senior was enjoying life,
 And then I thought of the Sophomore's strife.
 I saw the Junior with her haughty looks,
 Then my mind once more returned to my books.
 I envy them not their joys and their thrills—
 (Not any more than the taking of pills).
 I'll have my own pleasures some far off day,
 If I continue my course in the good old way—
 Since in their pleasure I cannot swirl
 Let me be like the average Sophomore girl.

There are Seniors and Juniors both good and bad;
 Some are very happy and others are as sad.
 The Senior—she loves her privileges many;
 (But I envy her not—*no* not any).
 The Junior—she simply dotes on her looks,
 While the placid Sophomore returns to her books.
 These Seniors and Juniors, good and bad (like me),
 Are just as interesting as they can be.
 They're careless, they're accurate, they're slow, they're fast,
 And somehow they always manage to pass.
 But let the second year student her banner unfurl,
 For *she* is the average Sophomore girl.

—MARY FLETA CAMPBELL, '28.



FRESHMAN



FRESHMAN CLASS

OFFICERS

CLASS COLORS: *Green and White*

CLASS FLOWER: *Lily-of-the-Valley*

CLASS MOTTO: *"Not less than best"*

ANNIE SHIELDS VAN DYKE	President
MARY FRANCES JENKINS	Vice-President
LILLIAN COLSON	Secretary
EUNICE RICHARDSON	Treasurer
EVELYN EWELL	S. G. A. Representative
ALICE FOLEY	Tecoan Representative
NELL FOOTE	Poet
LUCILLE SERMONS	Critic



FRESHMAN CLASS POEM

We are loyal Freshmen, Class of '29;
From every part of N. C. State
We come, with ideas fine.

There are many of us, two full score and more,
Who bring our lives to thee, E. C.,
And lay them at thy door.

And so, dear East Carolina, our very lives are thine,
To have and use for thy great good
And mold and make more fine.

We'll nobly strive, our dear E. C., our purpose to
fulfill;
We'll give our very best to thee
And try our niche to fill.

We chose thee, our dear College, because thou art
the best;
We'll ever keep thy standards high,
And ever wave them o'er the rest.

—NELL FOOTE, '29.



THE FRESHMAN CLASS

FRESHMAN CLASS

ROLL

REBECCA ALEXANDER	MILDRED MANGUM
ADA ALLEN	ELIZABETH MURPHY
ELIZABETH AUSTIN	LOUISE OVERMAN
OMA FAE BARNHILL	MARGARET PICKETT
BESS BARNHARDT	SADIE PERRY
JULIA D. BLOUNT	VIRGINIA PERKINS
WILMA COX	GERTRUDE RENFREW
LILLIAN COLSON	THELMA ROWL
FRANCES DIXON	EUNICE RICHARDSON
EVELYN EWELL	EMILY SMITHWICK
MARGARET FAISON	MARTHA STEWART
ALICE FOLEY	CLYDE STOKES
OLIVIA FORBES	VIOLA SCOTT
NELL FOOTE	LUCILLE SERMONS
MASAL FRY	GERTRUDE STYRON
SARAH FUSSELL	CARRIE SMITH
CARRIE L. GRIMES	CLARA L. SPRUILL
SUDIE HARRIET	VALLIE SUMRELL
ODESSA HILLIARD	EFFIE TRIPP
MAY HENDERSON	EVELYN TILLMAN
CLAIRE JONES	ANNIE S. VAN DYKE
SARAH B. JENKINS	LYNETTE WARREN
MARY F. JENKINS	GRACE WELLS
JULIA LANCASTER	MARY E. WHITE

C's





MAE MEADOWS
Mascot of Junior Normal Class



Velma Talton
SECRETARY



Dixie Taylor
PRESIDENT



Helen Maskins
VICE-PRESIDENT



Mabel Regan
TREASURER



Elise Dunn
CLASS EDITOR



Mary Grace Lyon
CARTIC



Clyda Woodard
TEEG ECHO
REPRESENTATIVE



Annie L. Brinkley
REPRESENTATIVE
ON COUNCIL

JUNIOR NORMAL CLASS OFFICERS



JUNIOR NORMAL CLASS—SECTION A

JUNIOR NORMAL CLASS

SECTION A

- BELL, MRS. EMILY
Scotland Neck, N. C.
- BRYAN, EMMA
Burgaw, N. C.
- BROWN, EMILY COBB
Greenville, N. C.
- CLARK, JULIA
Elizabethtown, N. C.
- DUNN, ELISE
Enfield, N. C.
- DUPREE, MARGARET
Greenville, N. C.
- EDMONDSON, PATTIE
Williamston, N. C.
- ELLIS, DOROTHY
White Oak, N. C.
- ELLIS, SALLIE
White Oak, N. C.
- EVERETTE, ELLEN
Robersonville, N. C.
- GAY, ELIZABETH MASON
Jackson, N. C.
- HOOKS, MARY LEE
Kinley, N. C.
- GEDDIE, CANOLIA
Erwin, N. C.
- HUDSON, RUTH
Oxford, N. C.
- KAHN, IRENE SARA
Hamlet, N. C.
- LIPSCOMB, REBEKAH
Milton, N. C.
- MARKS, ALMA
Scotland Neck, N. C.
- McINNIS, MABEL
Gibson, N. C.
- MEADOWS, JESSIE
Pollocksville, N. C.
- MOORE, SARA EVELYN
Matthews, N. C.
- MORTON, JEAN JOHNSTON
Wilmington, N. C.
- MOORE, RACHEL
Whitakers, N. C.
- PATRICK, MRS. SYBIL H.
Grifton, N. C.
- PHILLIPS, MARJORIE
Washington, N. C.
- ROEBUCK, SALLIE
Robersonville, N. C.
- SEXTON, VALERIA
Enfield, N. C.
- SMITH, EARLE
Gerian, N. C.
- STARK, WILLIE LEE
Townsville, N. C.
- STATON, ETHEL
Marshville, N. C.
- TATUM, EDNA
Ingold, N. C.
- TURNER, NELLIE
Mebane, N. C.
- VICK, SARA L.
Woodland, N. C.
- VIVERETTE, DOROTHY
Enfield, N. C.
- WALSTON, LILLIAN
Scotland Neck, N. C.
- WALSTON, MARY ELIZABETH
Woodland, N. C.
- WATSON, VIRGINIA
Jonesboro, N. C.
- WILLIAMS, SYBIL
Pollocksville, N. C.



JUNIOR NORMAL CLASS—SECTION B

JUNIOR NORMAL CLASS

SECTION B

ALLEN, ELIZABETH Aurora, N. C.	PETERSON, INEZ Savannah, Ga.
BECTON, AUDREY LEE Fremont, N. C.	PICKETT, CLARA Warsaw, N. C.
BLACKMAN, VERA Selma, N. C.	PITTARD, MITTILULAH Hester, N. C.
BOYD, THELMA Roanoke, N. C.	POWELL, JEANETTE Enfield, N. C.
BROWN, MARY ARUE Bethel, N. C.	RATCLIFFE, VIRGINIA Raleigh, N. C.
CABLE, ALTA LEE Clayton, N. C.	REGAN, MABEL C. Lumberton, N. C.
CREECH, MILDRED Selma, N. C.	SHORT, EVELYN Fremont, N. C.
DULA, LOUISE Wilkesboro, N. C.	SMITH, ALICE L. Hillsboro, N. C.
EVANS, RUBELLE Greenville, N. C.	SPIVEY, ANNIE Rich Square, N. C.
FULGHUM, SADIE Selma, N. C.	STEWART, JOHNNIE LEE Dunn, N. C.
HENDREN, HOPE Wilkesboro, N. C.	STRICKLAND, WINNIE WEST Kinston, N. C.
HINES, MILDRED Black Mountain, N. C.	SWAIN, MEREDITH LOUISE Raleigh, N. C.
JONES, ELIZABETH Greenville, N. C.	TALTON, M. VELMA Selma, N. C.
KISER, ELVA E. Bessemer City, N. C.	TANKARD, IOLA Washington, N. C.
LLOYD, EVELYN Hillsboro, N. C.	TAYLOR, NANNIE ALICE Kinston, N. C.
McMILLAN, MARY BELLE Red Springs, N. C.	TEMPLE, RUTH E. Dunn, N. C.
MITCHELL, MARY EUGENIA Hillsboro, N. C.	TOMLINSON, VERA Wilson, N. C.
MYERS, WILMER Orlanda, N. C.	TROY, PAULINE Wilmington, N. C.
NEWELL, HELEN R. Reidsville, N. C.	TUCKER, BRUCE Greenville, N. C.
PELLE, KATHERINE Gibsonville, N. C.	WATSON, ELIZABETH B. Fayetteville, N. C.
WHITFIELD, MARGARET Franklinton, N. C.	



JUNIOR NORMAL CLASS—SECTION C

JUNIOR NORMAL CLASS

SECTION C

- ABERNETHY, PAULINE
 Charlotte, N. C.
 ALEXANDER, ALMA
 Kinston, N. C.
 BRETT, KATE M.
 Ahoskie, N. C.
 BRIDGAM, MATTIE
 Swan Quarter, N. C.
 BRYAN, HAZEL
 Pikesville, N. C.
 BRYAN, MARY L.
 Burgaw, N. C.
 BATTIS, MARGARET
 Rocky Mount, N. C.
 CAHOON, EVELYN
 Plymouth, N. C.
 COAKE, AGNES
 Jackson, N. C.
 FAULK, FLORA
 McDonald, N. C.
 GOODNIGHT, RUTH
 Kannapolis, N. C.
 GRIGGS, GARNETTE
 Ruby, S. C.
 HARRIS, ARCHIE M.
 Swan Quarter, N. C.
 HICKS, BEATRICE
 Goldsboro, N. C.
 HARRELL, HELEN
 Merry Hill, N. C.
 JAMES, MAVOURNEEN
 South Mills, N. C.
 JOHNSTON, CORO
 Belhaven, N. C.
 LIPPARD, PAULINE
 Statesville, N. C.
 MACON, PATTIE P.
 Louisburg, N. C.
 MALLOY, MARGARET
 Jonesboro, N. C.
 MANN, LOIS
 Middleton, N. C.
 MOORE, LULA
 Roxboro, N. C.
 MOORE, LOTTIE
 Morehead City, N. C.
 PATTON, ANNIE MAY
 Davidson River, N. C.
 PEARCE, EDNA
 South Mills, N. C.
 PIERCE, JANIE B.
 Ayden, N. C.
 RADFORD, BETTY
 Swannanoa, N. C.
 RICHARDSON, SURLIE
 Elizabeth City, N. C.
 ROBBINS, HILDA
 Washington, N. C.
 ROGERS, RUBY K.
 Monroe, N. C.
 SCOTT, ELIZABETH
 Pollocksville, N. C.
 SCOTT, STELLA
 Pollocksville, N. C.
 SEWELL, MATIDGE
 Middleton, N. C.
 SILER, MAUDE
 Morristown, N. C.
 SMITH, JANIE RAE
 Troutman, N. C.
 STEARN, HELEN
 Belhaven, N. C.
 STEPHENS, GLADYS
 Holly Springs, N. C.
 WALL, MARY EMERY
 Jonesboro, N. C.
 WARREN, ERTIE BOYD
 Littleton, N. C.
 WHITE, VIRGINIA
 Hobgood, N. C.
 MARTIN, RUTH ELIZABETH
 Jonesboro, N. C.
 MCCALLUM, ELIZABETH
 Rowland, N. C.
 MCLEOD, REBA
 Angier, N. C.
 MCQUEEN, SALLIE
 Laurinburg, N. C.
 MITCHELL, ODELL
 Walnut Cove, N. C.
 WHITEHURST, LOUISE
 South Mills, N. C.
 WILLIAMS, CHRISTINA
 South Mills, N. C.
 WOODARD, CLYDA
 Kenley, N. C.
 WILLIAMS, CLORA
 Beulaville, N. C.
 WOODARD, EDNA
 Belhaven, N. C.



JUNIOR NORMAL CLASS—SECTION D

JUNIOR NORMAL CLASS

SECTION D

ATKINSON, LOUISE Greenville, N. C.	JOHNSON, REBECCA Rich Square, N. C.
BAGGETTE, MABEL Lewiston, N. C.	KERNODLE, EUGENIA Burlington, N. C.
BALLANCE, LULA INEZ North West, Va.	KILPATRICK, AILEEN Kinston, N. C.
BRINKLEY, ANNIE LAURIE Glen Apline, N. C.	LYON, MARY GRACE Oxford, N. C.
BROWN, ANNIE VIRGINIA Woodville, N. C.	McPHERSON, ETHEL Haw River, N. C.
BRYANT, CECILE Elm City, N. C.	MITCHELL, MARY M. Walnut Cove, N. C.
DAIL, CORINNE Edenton, N. C.	NICHOLS, E. CHRISTINE Morehead, N. C.
DUDLEY, ALTHEA Ayden, N. C.	NICHOLS, LURLINE Durham, N. C.
EDWARDS, MAMIE C. Snow Hill, N. C.	NORMAN, FRANCES Greenville, N. C.
ELLIOTT, MARY Hertford, N. C.	OAKLEY, GERTRUDE Greenville, N. C.
EVANS, NANNIE Greenville, N. C.	OVERCASH, LOUANNA Kannapolis, N. C.
FUQUAY, MARY EVELYN Fuquay Springs, N. C.	PHILLIPS, GLADYS Lucama, N. C.
GARDNER, MYRTLE Angier, N. C.	PITTARD, VIRGINIA Oxford, N. C.
GREEN, CORA LEE Warrenton, N. C.	PULLEN, MARY Spring Hope, N. C.
HASKINS, HELEN Kinston, N. C.	PAUL, EVA Arapahoe, N. C.
HEILIG, MARY SMITH Oriental, N. C.	SCOTT, VIOLET B. Lucama, N. C.
JENKINS, IRMA Rich Square, N. C.	SMITH, KATHERINE Red Springs, N. C.
JOHNSTON, GEORGIA Greenville, N. C.	SYKES, AUGUSTA Columbia, N. C.
JOHNSON, LYDIA HELEN Apex, N. C.	WINSLOW, ANNE Elizabeth City, N. C.
	WOOD, MARTHA ROWENA Warrenton, N. C.



JUNIOR NORMAL CLASS—SECTION E

JUNIOR NORMAL CLASS

SECTION E

BLACKLEY, MAURINE Franklin, N. C.	McPHERSON, RUTH Mebane, N. C.
BRITT, MARY LOUISE Hertford, N. C.	MITCHELL, MAYBELLE Goldsboro, N. C.
BROWN, SARAH M. Rockingham, N. C.	MOSELEY, MARTHA Kinston, N. C.
DUNN, LENA Roberdell, N. C.	PHIFER, ILA Marshville, N. C.
ELLERBE, MARY Rockingham, N. C.	SERMONS, IRMA T. Winterville, N. C.
FERGUSON, VIRGINIA Murfreesboro, N. C.	SMITH, ANNIE LEE Monroe, N. C.
FORBES, ANASTACIA Greenville, N. C.	SMITH, GENEVA Marietta, N. C.
FUQUAY, MAMIE Natson, N. C.	TAYLOR, DIXIE New Bern, N. C.
GASKILL, VIOLET Nanchese, N. C.	WHITE, ADA J. Elizabeth City, N. C.
GODWIN, MILDRED Columbia, N. C.	WALKER, SARAH MARGARET Fayetteville, N. C.
HESTER, MILDRED Greenville, N. C.	WALKER, MARGARET E. Graham, N. C.
HOBGOOD, JULIA Oxford, N. C.	WELLS, HARRIET E. Willard, N. C.
HOLTON, WILLIE MAE Greenville, N. C.	WEST, IDA LAURA Dover, N. C.
HARRELL, RUTH Elizabeth City, N. C.	WEST, JUANITA Stantonsburg, N. C.
IPOCK, CLAUDIA MAE Cove City, N. C.	WHITEHURST, RUTH ATHLEEN Tarboro, N. C.
JOHNSON, GERTRUDE Kerr, N. C.	WHITEHURST, ELIZABETH South Mills, N. C.
KEITH, NOLIE H. Willow Springs, N. C.	WOOD, JULIA MINOR Goldsboro, N. C.
McDANIEL, CHRISTINE V. Kinston, N. C.	WYNNE, ERNESTINE Columbia, N. C.



JUNIOR NORMAL CLASS—SECTION F

JUNIOR NORMAL CLASS

SECTION F

BLACKMAN, MAUDE Smithfield, N. C.	HUTCHINS, BLANCHE Oxford, N. C.
BOYETTE, MAUDE Kenly, N. C.	JACKSON, ROCHELLE Cooper, N. C.
BROOKS, ELOISE Bath, N. C.	KEE, LUCILE Pleasant Hill, N. C.
CANNON, SUSIE Hertford, N. C.	MARTIN, EFFIE Bethel, N. C.
CLAYTON, AGNES Brevard, N. C.	McDANIELS, ETHEL Selma, N. C.
COLSTIN, TEMPIE Nashville, N. C.	MITCHELL, ODESSIE Colerine, N. C.
COOK, LEORIA Kenley, N. C.	PITTMAN, INEZ Micro, N. C.
DEAN, LILLIAN Stovall, N. C.	RAMSAUR, EVA MAE Winnabow, N. C.
DOZIER, ELIZABETH Hertford, N. C.	ROBERSON, GRACE White Oak, N. C.
GRANT, FLORA Selma, N. C.	SANDERS, VIVIAN Weldon, N. C.
HART, SARAH Seaboard, N. C.	STEPHENSON, BLANCHE Garysburg, N. C.
HARRELL, FAYTIE Moyock, N. C.	THORPE, JESSIE Rosemary, N. C.
HAWKES, GLADYS Willow Springs, N. C.	WELLONS, ASENATH Selma, N. C.
HUGHES, OZIE Colerine, N. C.	WILLIAMS, MARTHA Oxford, N. C.
HUNT, GRACE Wake Forest, N. C.	WYCHE, ELIZABETH Weldon, N. C.
WHITEURST, DORIS Bethel, N. C.	

JUNIOR NORMAL CLASS POEM

E. C. T. C.'s in Pitt county,
Down right near the sea;
The River Tar, deep and wide,
Washes its wall on the northern side.
A pleasanter spot you never spied
But when begins my ditty,
Now, almost a year ago,
To see the town boys staring so
At girls was a pity.

C's!
They pushed, they shoved, they scared the
"rats,"
But they were only babies from the cradle.
Hungry? They ate the cheese out of the
vats,
And licked the soup from the cooks' own
ladles;
The noise they made sounded like cats,
They cried and ruined their Sunday hats,
And even spoiled the teachers' chats
By drowning their speaking
With shrieking and squeaking
In fifty different sharps and flats.

Next morning they to the school house
went,
And many hours of waiting there were
spent,
"Come in!" a man cried looking bigger:
And in did come the strangest figure!

At length the President broke the silence,
"It's easy to bid one rack one's brain—
I'm sure my poor head aches again,
I've scratched it so and all in vain.
Oh, for a plan, a plan, a plan!"
Just as she said this what could hap
At the council door but a gentle tap.
"Come in," she cried, and all gave a look
To the door where stood a purple book!
She took it up—looked from cover to head;
Rules! Oh, the Freshies would have a dread.
And so they did, and the rules had to learn
But from then on they knew not to spurn
The little hand book of purple and gold
That rests in their memory a perfect mould.

When into the world we C's will step,
From our Alma Mater here,
Whether we go east, west, north, or south,
We'll hold its memory dear.
Then like a musical adept,
To blow the pipe of praise to her
The College, who over work did never slur,
And on whose books there's never been a blur,
And 'ere three shrill notes the pipe utters
She'll hear as if an army mutters
From the top of the stair, where we C's sing airs
We haven't stared up the steps, but stepped up the stairs.

—MABEL McINNIS, '27.

Many there were with eyes swollen and
red,
Yet all over some papers bent their heads.
Questions, questions, it was like a din
And each was answered like prick of a pin.
But the registering was over and out they
swarmed
Like thousands of bees when the weather's
warm.
Yet lips where smiles went out and in
As they went to dinner like a wolf from
his den;
And nobody could a bit admire
The table and its quaint attire.
Quoth one, "It's beef steak every day,
Cooked in every imaginable way.
Oh, you'll get used to it I pray."

At last the council in a body
To their meeting place came flocking;
"Tis clear," cried the President, "laws
must be made"
And as far as our council shocking,
To think the C's get out with a little
squirming
Because we can't or won't determine,
What's best to be done about squirring.
Rouse up girls! Give your brain a racking,
Or, sure as Pat, I'll send you packing!"
An hour they sat in council.

COLLEGE LIFE AS IT IS

THE campus presented a very peaceful appearance on a certain March afternoon. Girls in two's and three's stepped briskly along carrying books under their arms and evidently discussing Rudolph Valentino, fashions, the ouija board, or some other topic of interest to intellectually inclined college girls. Among these groups of sweater-clad girls our modern miss stood alone on the steps of the library. It was evident from her chic costume that she was on her way downtown, and it was just as evident from her attitude that she was waiting for someone as she stood there drawing on her small brown gauntlets. Jolly greetings were thrown to her by all who passed.

Just then, two girls around the corner of a building saw the one waiting for them and let forth yells which shattered the peaceful enchantment of the scene, "Joe, Oh, Joe!" they cried, "come here quick, we've got something great to tell you."

Josephine soon joined her two roommates, and Mary, the most vivacious of this trio, hastened to tell the marvelous news, "Uncle George is coming tonight and you know he promised to take us to the theater."

"Oh, when did you hear from him, Mary?" asked Josephine.

"Just now," was a quick reply, "at least I haven't seen the message yet, but it's in my room. I met Sue in the hall and she told me it was on my dresser. Isn't it thrilling? What shall we wear?"

This started a discussion which lasted until they descended from the street car in front of a millinery store. Three important decisions had been made in the meantime. Mary must have a new hat, Josephine must have a new hat, Helen must have a new hat. Having reached these decisions, the only thing which remained was to select three hats suitable in size, shape, color and price. The remainder of the afternoon was spent in trying on hats of all descriptions.

Before entering the fifth millinery store, Helen stopped to set her watch by the town clock and discovered that they had only ten minutes in which to reach the College in time for dinner. "We'll have to run for our lives," she exclaimed, "if we expect to get anything to eat tonight and get dressed for the theater." With this they began racing towards the College, but, tired as they were, they could not refrain from talking about the play they expected to see that night and of all the fun they would have the next day in telling the girls about it.

Out of breath they reached the College only to discover that the dining room doors had been closed. Each of them assumed a blank expression. Soon, however, Mary partially recovered and endeavored to console the other two hungry girls, "Why should we worry over that?" she asked. "Isn't Uncle George coming tonight? Of course he'll see that we get something to eat downtown. Let's hurry up now and dress."

With this thought the girls' faces brightened and they quickly followed Mary upstairs.

When they reached their room all of them rushed towards the dresser, but no message could they find. Then they began a systematic search of the room, including the table, the chairs, and even the floor. Since they could not find it in any of these places, Mary began again with the dresser. There concealed beneath powder, rouge, and hair nets, Mary found the fateful message and, joyously, she turned to the expectant girls and read:

"Put your shoes in the closet and sweep under the bed."

—CLYDE HOOKS, '26.



School Days



BOOK THREE

Organizations

AND CLUBS



LOYD EVAN ELLIS
Sponsor of THE TECOAN Staff

THE TECOAN



Bruce Ellis
EDITOR-IN-CHIEF



Gladys Parsons
ASSOCIATE EDITOR

Ellie Phifer
ASSISTANT EDITOR



Jessie Bazemore
ART EDITOR



Lessie Cogdell
BUSINESS MANAGER



Inez Van Dyke
ASSISTANT BUS. MGR.

"THE TECOAN" STAFF

THE TECO ECHO



DEANIE BOONE HASKETT
Editor-in-Chief

FRANCES SMITH
Business Manager

REPORTERS

ZILPAH FRISBIE
ELIZABETH SMITH
SARAH GURLEY
LESSIE COGBELL
RUBY KILPATRICK

MUSETTE MONTAGUE
MARY CAMPBELL
JUANITA WORTHINGTON
KATHLEEN DALL
ELIZABETH THOMAS

MARGARET WILLIAMS
EMILY SMITHWICK
DORALITA LARKINS
MARGARET LEE JONES
CLYDA WOODARD



EDITORIAL STAFF



BUSINESS STAFF



McArthur



Aikin



Carr

THE TECO ECHO

Published bi-weekly during the College year by the Student Government Association of East Carolina Teachers College.

SUBSCRIPTION RATE FOR COLLEGE YEAR, \$1.50

Established in December, 1925.

STAFF

Editorial

MARY SHELTON McARTHUR
JENNY DARE AIKIN
REULAH CARR
RUBY WORTHINGTON

Business

MARY HOLT
ELIZABETH THOMAS
CATHERINE CLARKE
ALICE JONES
RUTH LOWDER



Worthington



Thomas



Holt



Clarke



JONES



Lowder

THE Teco Echo STAFF

S.G.A.





CHRISTINE VICK
President of Student Government Association



Virginia Blount
HOUSE PRESIDENT



Kathleen Dafl
VICE-PRESIDENT



Mildred Smith
HOUSE PRESIDENT



Annie Batts
HOUSE PRES.



Zilpah Frisbie
SECRETARY



Elizabeth Thomas
HOUSE PRES.



Viola Jones
HOUSE PRES.



Inez Van Dyke
TREASURER



Mary Cummings
HOUSE PRES.

STUDENT COUNCIL



Julia Tyler
REP. 'D' CLASS



Jennette Wedmore
REP. SENIOR CLASS



Mamie Copeland
REP. JUNIOR CLASS



Annie L. Brinkley
REP. 'C' CLASS



Ruby Yelverton
REP. SOPHOMORE
CLASS



Sallie Cheek
Y.W.C.A. PRES.

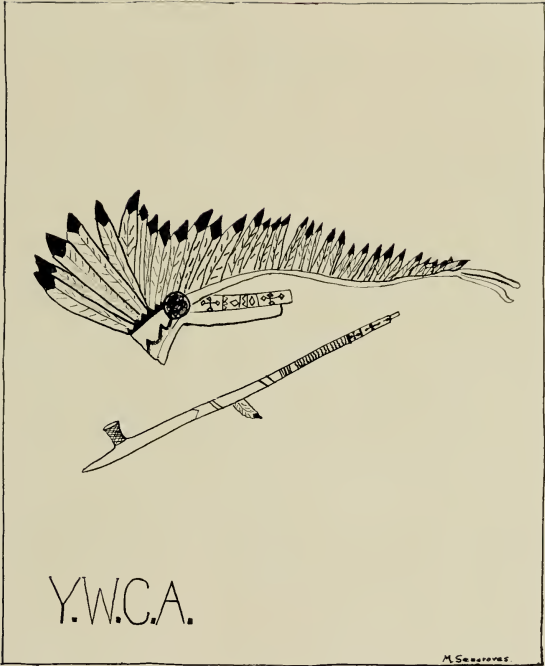


Evelyn Ewell
REP. FRESHMAN CLASS



Mary Holt
CHAIRMAN CAMPUS COMMITTEE

STUDENT COUNCIL





SALLIE CHEEK
President of Y. W. C. A.





Lois Dalrymple
SOCIAL SERVICE



Vera Wester
TREASURER



Ruth Bowen
VICE PRESIDENT



Carrie Lee Arnold
WORLD FELLOWSHIP



Virginia Blount
SOCIAL



Beulah Hillis
REG. CHAIR



Elizabeth Smith
SECRETARY



Hortense Moxing
UNDERGRADUATE REP.



Mary Grey Moose
MUSIC



Sadie Neal
STORE KEEPER



Milda Hare
PUBLICITY

Y. W. C. A. CABINET



Y. W. C. A. CHOIR



BLUE RIDGE SNAPSHOTS

THE Y. W. C. A. ON THE CAMPUS

THE Young Women's Christian Association has its place on the campus, and as no other organization can do it tends to deepen our appreciation of the higher things of life and to quicken the sources of love and fellowship among the students. This great organization, however, stands first of all for "Practical Christianity." The spiritual life is strengthened on the campus and a good training in Christian work is afforded by the Y. W. C. A.

By participating in the activities of the Y. W. C. A. the students become closer to Him; therefore they can happily try to abide by the national objective, "We determine to live unreservedly Jesus' Law of Love in Every Relationship, and so to God."

Aside from the religious viewpoints, the social standards are made higher by the Y. W. C. A., and a wholesome atmosphere that permeates the student body is created. Why would not every girl like to be a member of the Y. W. C. A.? To go to the hut at leisure moments during the day is more than a pleasure to the students. This hut, which has been a dream for the last few years, has been completed, and many enjoyable gatherings have been held there. Of course, the furnishings are rather scanty at present, but we hope to have it an up-to-date place before long.

Not only does the Y. W. C. A. elevate our social and spiritual life, but it furnishes a place for satisfying physical needs, known as the Y. W. Store. The profits from this store are used for sending delegates to the Blue Ridge conference each year in the early days of June. It is here that the Y. W. C. A. work is outlined, campus problems discussed, and probably the greatest good accomplished. To find God on the "Mountain Top" experiences is surely an inspiration never to be forgotten.

What more could anyone desire than to find God, and to know Him?

—HORTENSE MOZINGO, '27.



FOLLOW THE GLEAM

The Silver Bay Prize Song, 1920
Written by Bryn Mawr College

To the Knights in the days of old, ——— Keep-ing watch on the
And we who would serve the King, ——— And loy - al-ly

mountain heights, — Came a vision of Ho - ly Grail ——— And a
Him o - bey, — In the con-soc-ri-ate sil - lence know ——— That the

voicethrough the wait - ing night. — Fol-low, fol - low, fol low the
challenge still holds to - day — Fol-low, fol - low, fol low the

gleam Ean-ners un - furled o'er all the world, Fol - low, fol
gleam Stand-ards of worth o'er all the earth, Fol - low, fol

low, fol-low the gleam Of the Chal-ice that is the Grail, ———
low, fol-low the gleam Of the light that shall bring the dawn, ———

Used by the kind permission of Sallie Hume Douglas, Composer.





INTER-SOCIETY COMMITTEE



CHRISTINE VICK, *Chairman*

LOUISE BELL

GLADYS PARSONS

BESSIE WILLIS

ELIZABETH THOMAS

ERNESTINE KING

CARRIE LEE PEELE





LOUISE BELL
President of Lanier Society



Mildred Petway
VICE - PRESIDENT



Melba Warren
SECRETARY



Nellie Dawes
CHEER LEADER



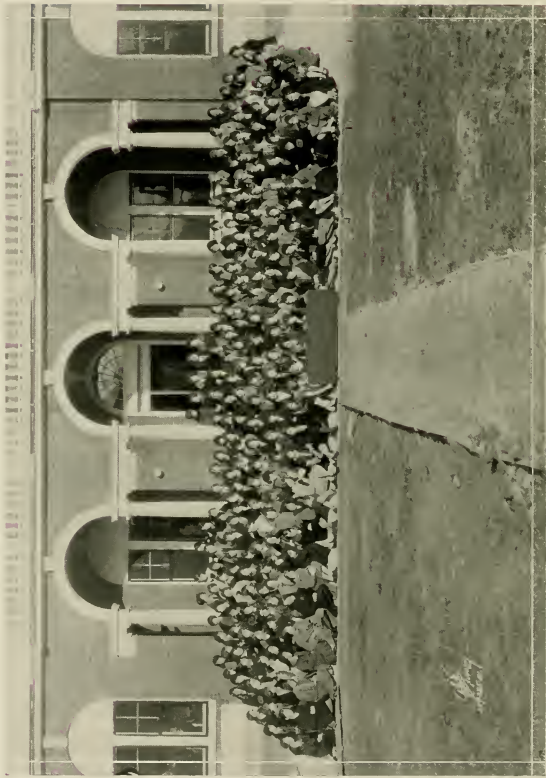
Maude Johnston
CRITIC



Fannie Lowe
TREASURER



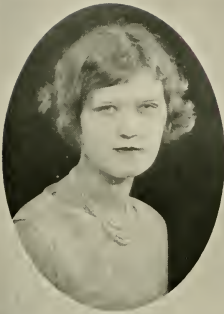
LANIER SOCIETY OFFICERS



LANIER SOCIETY GROUP



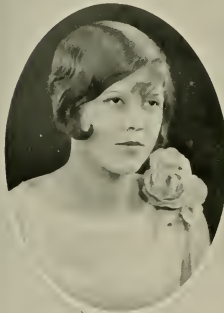
FRANCES DIXON AND EVELYN EWELL
Lanier Speakers



Carrie L. Arnold



Catherine Clark



Carrie Lee Peel



Addie M. Martin

LANIER MARSHALS



ANNIE ROWE HOUSE
Chief Marshal Lanier Society

LANIER SOCIETY SONG

TUNE: "On the Mall"

*Let us sing a song of praise to our society,
Hail, to thee, Sidney Lanier!
Loyal members ever proving your sobriety,
Though our fun to us e'er will be dear.
Then let us to our banner, each our tribute pay.
Let us ever our motto uphold,
Always faithful, true and loyal to the night and day.
Hurrah! for the Green and Gold.*





GLADYS PARSONS
Poe Society President



Alice Jones
VICE PRESIDENT



Mary Grey Moore
SECRETARY



Elizabeth
Johnson
CHEER LEADER

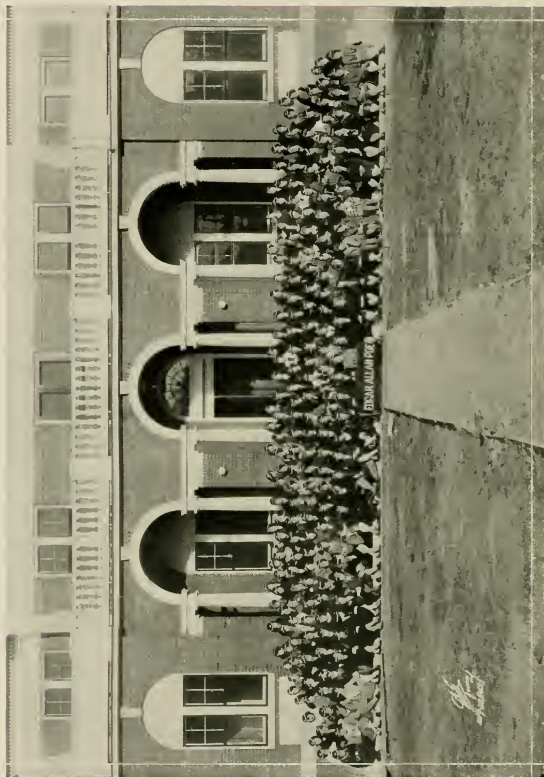


Hortense Mazingo
CRITIC



Louise Evans
TREASURER

POE SOCIETY OFFICERS



Poe Society Group



PAULINE MOORE AND ZILPAH FRISBIE
Poc Speakers
WINNERS OF THE CUP IN 1926



Pattie Mae Bagget



Jennie Aiken



Louise Joyner



Anna T. McNeil

POE MARSHALS





Phi Epsilon

PHI EPSILON

MOTTO: "I Do"

FLOWER: *Black-Eyed Susan*

COLORS: *Gold and Black*

OFFICERS

JANIE JACKSON	<i>President</i>
VIRGINIA BLOUNT	<i>Vice-President</i>
MARGARET WILLIAMS	<i>Secretary</i>
MAMIE COPELAND	<i>Treasurer</i>
HELEN VINIARSKI	<i>Sergant-at-Arms</i>
FEROL KEECH	<i>Mascot</i>



MEMBERS

ELIZABETH AUSTIN	SARAH GURLEY
PRISCILLA AUSTIN	DEANIE BOONE HASKETT
LUCILE ALLEN	MILDRED HERRING
ANNIE BATTS	JANIE JACKSON
INA BISHOP	JANIE BELLE JOHNSON
VIRGINIA BRITT	MARY FRANCES JENKINS
ALVERTA BRENDEL	DORALITA LARKINS
MARY CAMPBELL	RUTH MCGOWAN
BRONNIE COGDELL	MILDRED PETWAY
LESSIE COGDELL	ELOISE RIGGS
MAMIE COPELAND	JULIA SATTERTHWAITTE
CATHERINE CLARK	MARY SILER
DOROTHY CURRIN	DELMA SMITH
BERTHA COOPER	ELIZABETH SMITH
LILLIAN COLSON	MARGARET SHAW
EVELYN EWELL	LUCILLE SERMONS
NELL FOOTE	EMILY SMITHWICK
KATHLEEN FAISON	CARRIE LEE SPRULL
ZILPAH FRISBIE	CLYDE STOKES



PHI SIGMA

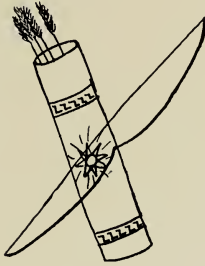
OFFICERS

MARY GRAY MOORE	<i>President</i>
MUSETTE MONTAGUE	<i>Vice-President</i>
BRUCE ELLIS	<i>Secretary</i>
LAURA SLOAN	<i>Treasurer</i>



MEMBERS

SALLIE CHEEK	DEANIE BOONE HASKETT	GLADYS PARSONS
KATHLEEN DAIL	VIOLA JONES	CHRISTINE VICK
MARY HOLT	MAUDE JOHNSTON	JENNETTE WEDMORE
R. C. DEAL		<i>Faculty Member</i>



ATHLETICS



LOTTIE McCLEDDY
President of Athletic Association





Sarah Gurley
BUSINESS MGR.
AND TREASURER

Lois Dalrymple
SECRETARY

Jennette Wedmore
REP. ON STAFF

OFFICERS OF THE ATHLETIC ASSOCIATION



ATLIENIANS

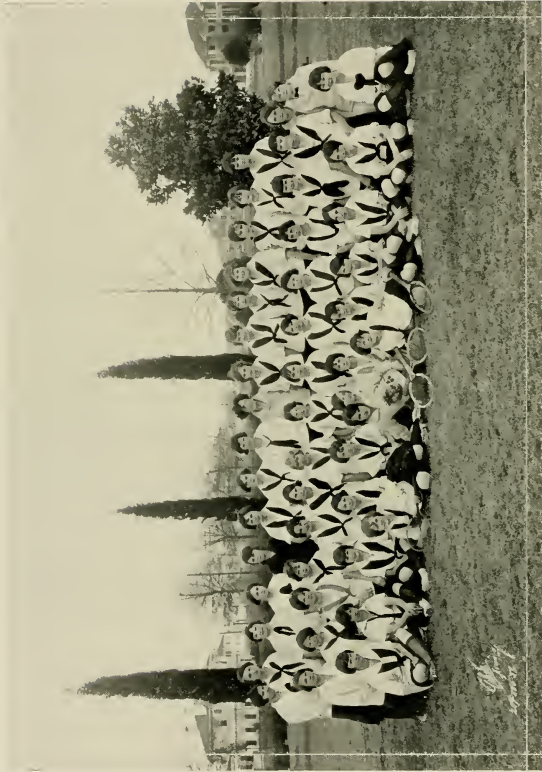
ATHLETICS

OUR college year in athletics really starts at the first game of importance—that of Thanksgiving. Heretofore, the game was played only between the two Normal classes, but this year the Freshmen, Sophomores and Juniors joined in, making the day more interesting. We had only one cup and that to be given to the winning team of the Normal classes. So we decided for a new cup to be given to the winning team of the college classes. This proved to be the Sophomores, and the "D's" of the Normal.

"Field Day" is another important event in athletics. We have all kinds of sport, from basketball to track. The class that receives the highest number of points in basketball, baseball, tennis and track receives the athletic cup. The class winning in basketball receives the basketball cup.

Another thing that adds interest to athletics is the division of the large group of members into two groups of smaller size; that of the Athenians under captainship of Sarah Gurley, and that of the Olympians under captainship of Ethel Prevatt. In this way, more work is accomplished and more interest is shown. We hope that interest in athletics will continue to grow as it is something everyone needs and enjoys.

—JENNETTE WEDMORE, '26.



OLYMPIANS



WEARERS OF LETTERS IN '24-'25

SARAH GURLEY

ELLEN HINES

RUTH JONES

VIOLA JONES

LOTTIE McCLENNY

ETHEL PREVATT

JENNETTE WEDMORE



"The Wearers of the Letters" are the members of the Athletic Association who, through the point system, have won college letters. The point system is a device for making points through the various forms of athletics and health rules. To win letters one is required to make three hundred points during the year.

—LOTTIE McCLENNY, '26.



SENIOR NORMAL BASKETBALL TEAM

ELLEN HINES, *Captain*

FORWARDS

LOTTIE McCLENNY
ETHEL PREVATT

MINNIE LEE LANIER
MARGARET HUDSON

GUARDS

ALICE JONES
ELLEN HINES

GENEVIEVE BAUCOM
JULIA TYLER

CENTERS

MARTHA SPIVEY

KATE MCKERNON



SOPHOMORE BASKETBALL TEAM

SARAH GURLEY, *Captain*

FORWARDS

LOUISE EVANS
SARAH GURLEY

GERTRUDE MERCER
CAROLINE MACON

GUARDS

VERA WESTER
RUTH JONES

ETHEL SPRATT
ELIZABETH SMITH

CENTERS

DELMA SMITH

BRONNIE COGDELL



JUNIOR
BASKETBALL TEAM

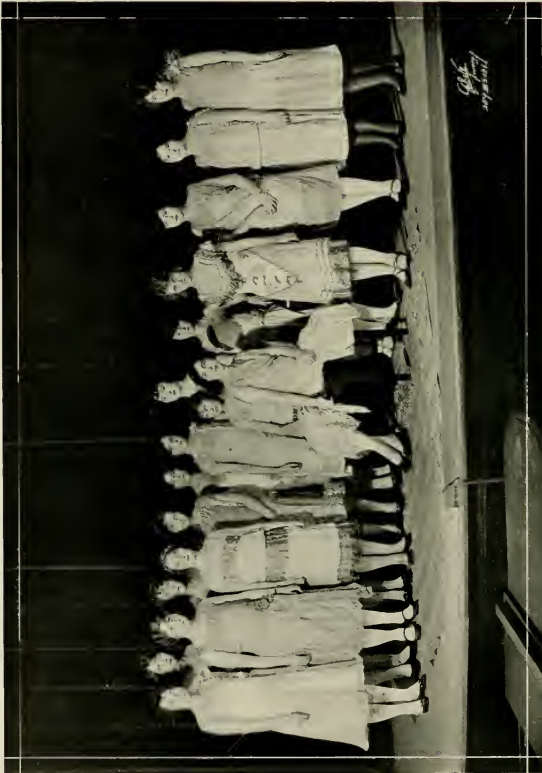


"C" BASKETBALL
TEAM



FRESHMAN
BASKETBALL TEAM





THE GLEE CLUB



COLLEGE QUARTET

MARY GRAY MOORE RACHEL LEE CATHERINE GRANTHAM IRENE ETHERIDGE

GLEE CLUB

OFFICERS

MISS GUSSIE KUYKENDALL *Director*
 MARY GRAY MOORE *President*
 CATHERINE GRANTHAM *Business Manager*
 EDNA WOODARD *Assistant Business Manager*



MEMBERS

JEAN MORTON
 ANNIE ROWE HOUSE
 CATHERINE GRANTHAM
 ELOISE SASSER
 BEATRICE HICKS
 JOSIE EARLY
 VIRGINIA BLOUNT
 GLADYS PARSONS
 MAY BELLE MITCHELL
 EDNA WOODARD
 ELIZABETH THOMAS

HELEN HASKINS
 IRENE KAHN
 IRENE ETHERIDGE
 REBA MCLEOD
 ESTELLE CHAMBLEE
 EVELYN LOYD
 ASENATH WELLS
 MAUDE JOHNSTON
 RACHEL LEE
 MILDRED HESTER
 MARY GRAY MOORE



HOME ECONOMICS CLUB

OFFICERS

GLADYS KILPATRICK	<i>President</i>
ELOISE RIGGS	<i>Vice-President</i>
JULIA SATTERTHWAITE	<i>Secretary</i>
MARGARET WILLIAMS	<i>Treasurer</i>



ROLL

ADA ALLEN
 ELIZABETH AUSTIN
 PRISCILLA AUSTIN
 MARY BANKS
 BESSIE BARNHARDT
 INA BISHOP
 VIRGINIA BLOUNT
 MARY CAMPBELL
 CATHERINE CLARK
 EVELYN EWELL

KATHLEEN FAISON
 SARA FUSSELL
 SUME HARRIET
 SARA BURTON JENKINS
 JANIE BELL JOHNSON
 GLADYS KILPATRICK
 ELIZABETH MURPHY
 LOUISA OVERMAN
 RUTH RHYNE

ELSIE SEAGO
 HILDA SUTTON
 JULIA SATTERTHWAITE
 EVELYN TILLMAN
 EFFIE TRIPPE
 ELLA WHEELER TUCKER
 MARY LOUISE TURNER
 GRACE WELLS
 MARGARET WILLIAMS
 JUANITA WORTHINGTON



THE BEAU CO CLUB
Beaufort County Boosters

FLOWER: *Dogwood*

MOTTO: *"First, last, and always"*

COLORS: *Green and White*

OFFICERS

ALLIE RAE PAUL	<i>President</i>
CORA JOHNSON	<i>Vice-President</i>
HELEN STEARN	<i>Secretary</i>
HILDA ROBBINS	<i>Treasurer</i>



MEMBERS

ELIZABETH ALLEN	<i>"Liz"</i>	Aurora
ELOISE BROOKS	<i>"Weezer"</i>	Bath
BERTHA COOPER	<i>"Jim"</i>	Washington
CORA JOHNSON	<i>"Sal"</i>	Belhaven
MYRA MAY MAYO	<i>"M3"</i>	Washington
MARJORIE PHILIPS	<i>"Margie"</i>	Washington
DORA PHELPS	<i>"Dordy"</i>	Belhaven
ALLIE RAE PAUL	<i>"L' Rae"</i>	Edwards
HILDA ROBBINS	<i>"Spot"</i>	Washington
HELEN STEARN	<i>"Helen"</i>	Belhaven
IOLA TANKARD	<i>"Iola"</i>	Washington
EDNA WOODARD	<i>"Runt"</i>	Belhaven



BERTIE-HERTFORD CLUB

MOTTO: "Don't do today what you can put off 'til tomorrow"

COLORS: *White and Gold*

FLOWER: *Daisy*

OFFICERS

ADA BELLE SESSOMS *President*
 JOSIE EARLY *Vice-President*
 LEATHEA BAZEMORE *Secretary and Treasurer*



MEMBERS

"SALLY" ADAMS	"MIDGET" BRETT	"FRANK" MYERS
"MABEL" BAGGETTE	"VA" BROWN	"OLD MAID" HUGHES
"PAT" BAGGETTE	"JO" EARLY	"NOSE" KNOWLES
"JESS" BAZEMORE	"GINGER" FERGUSON	"DESS" MITCHELL
"TIP" BAZEMORE	"HELEN" HARRELL	"BILL" SESSOMS
"BETTY" BOND	"TEENIE" KING	"LITTLE-UN" SMITHWICK



CAMDONIANS

Motto: "Joy while we live"

COLORS: *Old Gold and Black*

FLOWER: *Goldenrod*

OFFICERS

ANNIE DOZIER *President*
 ELOISE RIGGS *Vice-President*
 MAVOURNEEN JAMES *Secretary and Treasurer*



MEMBERS

<i>Name</i>		<i>Statistics</i>
ANNIE DOZIER	"Dimples"	Most Lovable
ELOISE RIGGS	"Weenie"	Meekest
MAVOURNEEN JAMES	"Jimmie"	Most Attractive
MARGARET WILLIAMS	"Peggy"	Most Talented
CHRISTINA WILLIAMS	"Tiny-Bertie"	Best Sport
IRENE ETHERIDGE	"Weenie"	Most Musical
LOUISE WHITEHURST	"Do-Ease"	Most Sincere
ELIZABETH WHITEHURST	"Buck"	Most Friendly
EDNA PEARCE	"Kid"	Best Athlete
BESSIE ABBOTT	"Bess"	Best-All-Round



D² CLUB

MOTTO: "Get up and get"

FLOWER: *Self-Rising*



MEMBERS

EDNA BELL	"Red"	Rosemary
EULLA COLLIER	"Pint"	Roanoke Rapids
ANNA BELLE DAUGHTERY	"Phool"	Roanoke Rapids
MARY ELLIOT	"Lefty"	Hertford
CORA JOHNSON	"Sal"	Belhaven
EDNA WOODARD	"Runt"	Belhaven
RUEYE WOODROOF	"Woo-Fce"	Roanoke Rapids



DOMINO SIX

MARY EMMA BIZZELLE	General Gay
ANNA McNEILL	Colonel Frolic
ANN DELLINGER	Major Happy
ALICE JONES	Captain Fun
DELL POPE	Lieutenant Wit
VIVIAN SANDERS	Raw Recruit Grin





EDGECOMBE COUNTY CLUB

MOTTO: "B²"

COLORS: *Red and White*

AIM: "Move On"

FLOWER: *Tulip*

OFFICERS

JOSIE PROCTOR	<i>President</i>
REBECCA THIGPEN	<i>Vice-President</i>
EVA GRIMES	<i>Secretary</i>
MARY BEVERLY	<i>Treasurer</i>
GERTRUDE MERCER	<i>Poet</i>

ROLL

"Bill"	BESSIE OWENS	"Jane"	EVA GRIMES
"Bec"	REBECCA THIGPEN	"D"	ADELIA EDWARDS
"Keel"	ETHEL EVERETTE	"B. B."	VIVIAN LUCAS
"Trixie"	GERTRUDE MERCER	"H'ite"	ATHLEEN WHITEHURST
"Beaver"	MARY BEVERLY	"Jody"	JOSIE PROCTOR

POEM

We are the daughters of Edgcombe,
 "Move On" is our aim,
 We will stand up for our college
 And true to you remain.



GRAN-CO CLUB

MOTTO: "We are out for fun; get up and git"

COLORS: *Pink and Green*

FLOWER: *Crepe Myrtle*

OFFICERS

VIOLA JONES	President
RUTH JONES	Vice-President
NANNIE LEIGH ROYSTER	Secretary
SUE BRYAN	Treasurer



MEMBERS

LUCILE ALLEN	MAE HENDERSON	CAROLYN MACON
SUE BRYAN	JULIA HOBGOOD	SADIE NEAL
PAULINE CURRIN	BLANCHIE HUTCHINS	VIRGINIA PITTARD
IZONA CURRIN	RUTH HUDSON	MITTILULAH PITTARD
MAUDE CLAY	VIOLA JONES	NANNIE LEIGH ROYSTER
LILLIAN DEAN	RUTH JONES	ELIZABETH SMITH
FRANCES HARMON	CLAIRE JONES	MARTHA WILLIAMS
VIRGINIA HICKS	MARY GRACE LYON	MARGARET WHITFIELD



HYDE COUNTY CLUB

MOTTO: *"Do anything you see your way clear"*

COLORS: *Green and White*

FLOWER: *Pond Lily*

MEMBERS

"MATT" BRIDGMAN
"SAL" CHEEK
"FLOSSY" CLARKE
"ARCH" HARRIS

"PRISS" MANN
"PEGGY" WESTON
"MAY" WHITE
"MEUM" WILLIAMS



NOTABLE FEATURES

MATT "will" do anything to help you get in trouble.
SAL is always striving for "the preacher."
PEGGY, our historian—her favorite topic, "Sir Gilbert."
PRISS has the honor of heading "Our Marriageable List."
ARCH wears "brown" all the time.
FLOSSY, the only one who wishes to be a "mann."
MEUM, the only "boy chaser."
MAY, the "only lady."



IREDELL COUNTY CLUB

MOTTO: *"Why should life all labor be?"*

COLORS: *White and Gold*

FLOWER: *Daisy*



MEMBERS

FAN "DEBORAH" CAVIN
LILLIAN "PRISCILLA" COLSON
MARY "ESMERALDA" COLSON
ELFRIEDA "CECELIA" GOUGER
LAVA "DIANA" HOWARD
MARY M. "PENELOPE" HUDSON
MARY "PRUDENCE" JOHNSTON

PAULINE "SUSAN" LIPPARD
HELEN "DRUSCILLA" LEWIS
DORIS "LENNA" MCKEY
SADIEREE "MELISSA" MCKOY
RUBY "PRUNELLA" MENIUS
JANIE REA "DAPHNE" SMITH
EFFIE "JANE" WEST



JOHNSTON COUNTY CLUB

MOTTO: "We can because we think we can"

COLORS: *Yellow and White*

FLOWER: *Jonquil*

OFFICERS

SAYDEE FULGHUM *President*
 CLYDA WOODARD *Vice-President*
 JOHNNIE WATSON *Secretary and Treasurer*



ROLL

MILDRED BOYETT
 MAUDE BOYETT
 MAUDE BLACKMAN
 GENEVIEVE BAUCOM
 VERA BLACKMAN
 LEORIA COOK
 MILDRED CREECH
 BLANCHE FITZGERALD
 SAYDEE FULGHUM
 FLORA GRANT

RUTH GRANTHAM
 CLYDE HOOKS
 MARY LEE HOOKS
 ELGIA HOCUTT
 MARY HOCUTT
 MARTHA HASSELL
 GLADYS HAWKS
 MARGARET LEE JONES
 CHRYSTELLE LUCAS

SNEEDE LEASON
 ETHEL MCDANIEL
 INEZ PITTMAN
 MARY LOUISE TURNER
 MIRIAM TURLEY
 VELMA TALTON
 CLYDA WOODARD
 ASENATH WELLONS
 JOHNNIE WATSON
 MARJORIE WILLIAMS



L. A. C. CLUB

SLOGAN: "Me too"

MEETING PLACE: *Room 211*

TIME: *All Times*



MEMBERS

<i>Name</i>	<i>Nickname</i>	<i>Office</i>
EVA McLEAN	"Eve"	President
KATHERINE MCKENZIE	"Kat"	Vice-President
IULA BRITT	"Puny"	Secretary
ETHEL PREVATT	"Spemter"	Treasurer
LOUISE TYNDALL	"Sticky"	Business Manager
ELIZABETH PAUL	"Libs"	Social Director
IOLA BRITT	"Lola"	Cheer Leader



LEFT HAND CLUB

MOTTO: "Each for all and all for each"

COLORS: *Blue and White*

OFFICERS

LOUISE BELL	<i>President</i>
ELVA KISER	<i>Vice-President</i>
RUTH RHYNE	<i>Treasurer</i>
NELLIE TRIPLETT	<i>Secretary</i>



MEMBERS

LOUISE BELL
 MARY EMMA BRYAN
 MARY ELLIOT
 FLORENCE HICKS
 REBECCA JOHNSON
 RUBY KILPATRICK
 IRENE KAHN

ELVA KISER
 RUTH RHYNE
 NELLIE TRIPLETT
 MIRIAM TURLEY
 MISS MORTON
 MISS HALL
 MISS DAVIS

THE ELCOAN



N. G. F.'S

SLOGAN: "To the top or bust!"

COLORS: *Green and White*

FLOWER: *Bachelor's Button*

MEETING PLACE: *Deux Cents Scize*

Laugh, frolic, and eat can we,
 But in the latter we excel,
 If you doubt it just watch and see,
 But, please, don't go tell.



MEMBERS

<i>Name</i>	<i>Nickname</i>	<i>Office</i>
DELMA SMITH	"Bojack"	President
ELOISE SASSER	"Sassy"	Vice-President
MAY BELLE MITCHELL	"M'Belle"	Secretary
ELLEN HINES	"Butter-Cup"	Treasurer
MARGARET ROBBERSON	"Bargie"	Social Director
JULIA MINOR WOOD	"Aziaminor"	Jazz Director
JANIE BELLE JOHNSON	"Jeb"	F. G. Elite
SARA GURLY	"Skippit"	Rhyme-Ringer
ELLEN GARDNER	"Classy"	Retired to Matrimony



NORTHAMPTON COUNTY CLUB

MOTTO: "North Carolina we cherish above, but our own Northampton, none the less, we love."

COLORS: *Crimson and Grey*

FLOWER: *Grey Moss*

OFFICERS

JULIA TYLER *President*
FLORENCE TYLER *Secretary and Treasurer*



MEMBERS

AGNES COOKE
ELIZABETH GAY
LELIA ASKEW
FAYE JOHNSON
CLARICE LEWTER
CHRISTINE VICK
NELL JOYNER
MINNIE HART
SARAH LEIGH VICK
LUCILLE KEE

RAYNOR LONG
WILLIE LEE SPIVEY
ANNIE GRAY BRIDGERS
ANNA OUTLAND
FANNIE LOWE
ELIZABETH GRANT
HOLLIE PARKER
BETTIE ROSE TAYLOR
MARY WATSON
CLEO SAULS

BLANCHE STEPHENSON
BERNICE BRITT
SARAH HART
MAMIE COPELAND
ANNIE SPIVEY
IRMA JENKINS
REBECCA JOHNSON
JULIA TYLER
MARTHA SPIVEY
FLORENCE TYLER



THE PALS' CLUB

MOTTO: "To have a friend is to be one"

FLOWER: *Forget-Me-Not*

OFFICERS

ANNIE DOZIER	<i>President</i>
HELEN EDWARDS	<i>Vice-President</i>
RUBY KNOWLES	<i>Secretary</i>
NELLIE TRIPLETT	<i>Treasurer</i>



MEMBERS

<i>Name</i>	<i>Nickname</i>	<i>Statistics</i>
ANNIE DOZIER	"Jimmie"	<i>Best All-Round</i>
HELEN EDWARDS	"Hialy Baby"	<i>Most Attractive</i>
NORA LEE GADDY	"Norga"	<i>Most Popular</i>
LOUISE GRISSOM	"Little Ease"	<i>Most Sincere</i>
RUBY KNOWLES	"Knows"	<i>Most Talented</i>
NELLIE TRIPLETT	"Trip"	<i>W'ittiest</i>



PASQUOTANK TRIBE

MOTTO: "Turn over and take it easy"

COLORS: *Green and White*

FLOWER: *Water Lily*

OFFICERS

CATALOACHEE JACOBS *President*
NEBA LANE *Secretary and Treasurer*
HARVEY DEAL *Mascot*



MEMBERS

HIWASSEE HARRELL	CHICASAU HARRELL
CATALOACHEE JACOBS	SALUDA REDDICK
TULUCA RICHARDSON	WATABA WHITE
NEBA LANE	AQUONIE RICHARDSON



RED-HEAD CLUB

MOTTO: "*Toujours Rouge*"

SONG: "*'Cause It's Red*"

COLORS: *Red and Green*

FLOWER: *Red Roses*

OFFICERS

MISS RUTH HILLHOUSE *President*
 MISS BECKY EDMONDS *Vice-President*
 NANCYE HINSON *Secretary and Treasurer*



MEMBERS

ANNIE BATTs
 MENIE BELL
 LUCILLE BRITT
 MARY CUMMINGS
 TARMESIA DUNN
 KATHLEEN FAISON
 MARGARET FAISON
 MRS. A. D. FRANK

GUSSIE L. HARRELL
 MARY HOLT
 CLAUDIA IPOCK
 ESTELLE ISLES
 JANIE B. JOHNSON
 ANN KANoy
 FRANCES MITCHELL
 JEAN MORTON

Mr. R. C. DEAL

DELL POPE
 NINA R. ROUSE
 ISABEL SMITH
 CLARA L. SPRUILL
 JOHNNIE L. STEWART
 FLORENCE TYLER
 GRACE WELLS
 ERNESTINE WYNNE



ROBESON COUNTY CLUB

MOTTO: *"Boost McLEAN and Save ROBESON"*

COLORS: *Blue and White*

FLOWER: *Ragged Robins*

OFFICERS

IOLA BRITT	<i>President</i>
CHRISTINE McDANIEL	<i>Vice-President</i>
LaRUE FLOYD	<i>Secretary and Treasurer</i>
ELIZABETH PAUL	} <i>Program and Social Committee</i>
MABEL REGAN	



MEMBERS

ETHEL PREVATT
 EVA McLEAN
 MARY BELLE McMILLAN
 ISABEL SMITH
 KATHERINE SMITH
 ELIZABETH PAUL

IOLA BRITT
 IULA BRITT
 CORONA JOHNSON
 CHRISTINE McDANIEL
 LaRUE FLOYD

FLORA FAULK
 JULIA TOLAR
 ELIZABETH McCALLUM
 MABEL REGAN
 OPHELIA FLOYD
 PEARL FREEMAN



“THE HAPPY HANDFUL”

MOTTO: “The best is none too good”

Twenty-one hands full of happiness,
 Twenty-one hearts full of cheer,
 This is the motto we follow,
 Daughters of Wayne, while we're here.
 Hail fellows! A laugh and a greeting—
 We're off for a Wayne county meeting!

OFFICERS

SARAH GURLEY	<i>President</i>
ELOISE SASSER	<i>Secretary</i>
LOUISA OVERMAN	<i>Treasurer</i>
JULIA M. WOOD	<i>Social Leader</i>



MEMBERS

HAZEL BRYAN
 HILDA HOOKS
 ELEN HINES
 MARGARET ROBINSON
 EARLE SMITH
 AUDREY BECTON

RUTH CRUMPLER
 ESTELLE EDMUNDSON
 LOTTIE McCLENNY
 BLANCHE PIERCE
 BRONNIE COGDELL

BESSIE WILLIS
 MARY EDMUNDSON
 EVELYN SHORT
 CATHERINE GRANTHAM
 HILDAGARDE ROBERTS
 MAYBELLE MITCHELL



TRIPLE "L" CLUB

MOTTO: "L L L"

SONG: "Let Me Call You Sweetheart"

FLOWER: Sweetheart Rose

FAVORITE CANDY: Honey-Moon Kisses



<i>Name</i>	<i>Nickname</i>	<i>Statistics</i>
NANNIE ALICE TAYLOR	"Nat"	Lover of Love
MABEL REGAN	"Ginger"	Lover of Dreams
JEAN MORTON	"Sunshine"	Lover of Music
CLARA PICKETT	"Prune"	Lover of Peace
JENNETTE WEDMORE	"Jack"	Lover of Fun
WINNIE STRICKLAND	"Peggy"	Lover of Ease
PATTIE EDMUNDSON	"Pat"	Lover of Letters
MAE HELMS	"Turk"	Lover of the Moon
WILMER MYERS	"Slim"	Lover of the One

THE TECOAN



UNION COUNTY CLUB

MOTTO: "*In union there is strength*"

COLORS: *Green and White*

FLOWER: *Goldenrod*

OFFICERS

NORA LEE GADDY *President*
ANNIE LEE SMITH *Vice-President*
EFFIE STRAWN *Secretary and Treasurer*



MEMBERS

ISABEL BIGGERS
MAUDE CARTER
DAISY FINCHER
NORA LEE GADDY
MAE HELMS
EVELYN MOORE

ELLIE PHIFER
ILA PHIFER
VERLA RICHARDSON
RUBY ROGERS
ETHEL STATON
EFFIE STRAWN

ANNIE LEE SMITH



WAKE COUNTY CLUB

MOTTO: "Wake 'em up"

COLORS: *Purple and White*

FLOWER: *Morning Glory*

OFFICERS

MACY SILER *President*
 MEREDITH SWAIN *Vice-President*
 EVELYN HUTCHESON *Secretary and Treasurer*



MEMBERS

ESTELLE CHAMBLEE
 EVELYN FUQUAY
 HILDA HARE
 GRACE HUNT
 HELEN JOHNSON

NOLIE KEITH
 MAE MIDGETT
 VIRGINIA RATCLIFFE
 MAUDE SILER
 GLADYS STEPHENS

EVELYN TILLMAN



B. K.'S



SOUTH CAROLINA CLUB



HALIFAX COUNTY CLUB



PITT COUNTY CLUB



BOOK FOUR

Statistics

AND FEATURES



STATISTICS

Jambalaya

(With apologies to everybody)

"Tell them dear, that if eyes were made for seeing
Then Beauty is thine own excuse for being."
If charming ways can soothe all melancholy
Then I pray, Charm, to put us all to folly.
If ribboned poles and daisy chains bespeak the day
Then send your heralds forth, Queen of the May.
We'll fun and frolic, sing with hearty good cheer
And Grace shall dance her way through all the year.
With envying eyes we watch as Talent plays
Her tune on every string, in pleasant ways.
She who can ever talk and yet make others hear
As Loquacity does, is pleasing to the ear.
When Kings and Queens and all their court grow sad—
Then straight for Wit they send to make them glad.
To you, Versatility, the world can tell,
Choose what you will, you'll ever do it well.
The one who can smile in the face of defeat,
Wear Victory's laurels well, is a Sport hard to beat.
All work and no play makes Jack a dull boy;
Athletics, you're work, but you're work with a joy.
"Three cheers," say the Cheer Leaders, "pep it up there,
Let's sing for our College 'For her we'll dare'."

—BESSIE WILLIS, '28.



MARY FANNIE TREXLER
Beauty



VIRGINIA BLOUNT
Charm



FANNIE LOWE
May Queen



PATTIE MAE BAGGETTE
Grace



HELEN VINIARSKI
Talent



RACHEL LEE
Loquacity



BRUCE ELLIS
Wit



CHRISTINE VICK
Versatility



JOHNNIE LEE STEWART
Sport



ETHEL PREVATT
Athletics



BESSIE WILLIS AND SNEEDE LEESON
College Cheer Leaders



Arthur



Robin AND John



Elinor AND John

Scenes from "Sherwood"^{DD}



Marian AND Robin



John AND Marian



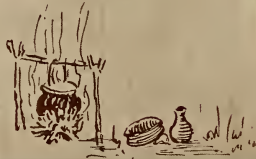
Marian AND Robin



Shadow-of-a-Leaf



Blondell





A SCENE FROM YESTERDAY
(The Faculty)



THE FACULTY AS THEY WERE



BOOK FIVE

Potpourri

"THE TRUTH"

(Clipped from *The Tecu Echo*)

A delightful performance of "The Truth," that clever play which is a combination of comedy and tragedy, by Clyde Fitch, was given by the Senior class on December 10th at 8:30 o'clock in the college auditorium to a large audience who proved their appreciation by their response to all the fine points of the play.

Helen Viniarski, as Becky, a lovable, sweet and attractive person who finds the truth hard to tell, was the star. Her acting was superb. She had the entire audience smiling at her one moment and weeping with her the next. Elizabeth Thomas played convincingly the part of Tom Warder, a rather puritanic type of person, who "doesn't understand a suspicious nature—but has every confidence in his wife."

The chief causes of the trouble in the Warder home are two persons, Fred Lindon, a sheikish man of no character, which satirical and easy-going part was excellently interpreted by Isabelle Cromartie; and Stephen Roland, Becky's father, a broken down gambler and a "has been," played in a most commendable manner by Bruce Ellis. Lessie Cogdell, in the role of Mrs. Crespigny, Roland's landlady who, regardless of his faults, hopes that he is a "will be" for her, was a scream. She kept the audience in an uproar whenever she appeared.

Annie Mae Edwards, as Eve Lindon, never lost her part as the nervous, jealous wife. Sallie Cheek, as Laura Fraser, was a good foil for her.

Bertha Piland as Jenks was a good maid, and Kathleen Dail made an attractive little messenger boy.

The girls that took parts of men are to be congratulated on the excellent way in which they carried out their difficult parts, both in appearance and in action.

The make-up was cleverly done. The costumes, which were modern, helped to carry out the idea of the time and place.

Possibly the thing that impressed the audience most was the naturalness of the acting. Each actor appeared not to be conscious of the fact that there was an audience, but spoke and acted toward each other with an ease which is very hard for amateurs to attain. Their voices were well modulated, so the lines were all caught by the audience.

The great success of the play was due to a large extent to the untiring efforts of the directors, Miss Emma L. Hooper and Miss Maude M. Hall, both of the English department.

The large crowd of people from outside the college was sufficient proof of the good work done by the advertising committee, which consisted of Christine Vick, Musette Montague, Deanie Boone Haskett, and Macy Siler.

The many attractive posters, which were placed in Greenville and several other towns, were effective and did a great part in bringing the crowd.

The stage committee composed of Ruby Worthington, Maude Johnson, Ruth Lowder, and Mary Lowder deserve much praise for their work in making the stage as it should be.

The president of the class, Janie Jackson, is also due much praise for her executive ability in managing the play so that it went off so well.

The music, before the curtain and between the acts, a violin ensemble, by Misses Gorrell, Wedmore, Westmoreland and Morton, with Miss Mead at the piano, added greatly to the success of the evening.

The ushers for the evening were as follows: Rachel Lee, Frances Smith, Mary Shelton McArthur, Margaret Smith, Juanita Worthington and Estelle Isles



"IN THE BEGINNING"

WHY TEACHERS TURN GRAY

Answers to exam on medieval history, when asked to identify the following in history:

1. Philip the Fair: The first user of Palmolive soap as he kept that school girl complexion.
2. "City of God": Garden of Eden.
3. Charles the Bold: The first man to eat an oyster.
4. Romance Languages: Pet words used by Mark Antony and Cleopatra.
5. Dante: Famous for writing on "The Entrance to the Hellespont."
6. Charles the Hammer: Rival of George Washington.
7. Joan of Arc: Daughter of Noah.
8. Marco Polo: A famous game of the Prince of Wales.
9. Moscow: Furnished the well-known food for colleges.
10. Richard the Lion-Hearted: A member of Barnum-Bailey Circus.
11. Alaric: A form of blank poetry.
12. Theodosian Code: A code used by the famous lovers, Pryramus and Thisbe.
13. Harold, the fair-headed of Norway: First user of Golden-Glint Shampoo.

THE WOMANLESS WEDDING

A wedding of more than usual interest to all East Carolina students, faculty and alumnae, was the womanless wedding which took place in the East Carolina chapel on December 18, 1925.

This wedding of unusual interest was solemnized at 6:30 o'clock when Prof. A. D. Frank became the bride of Prof. Beecher Flanagan.

The impressive ring ceremony was performed by Prof. E. L. Henderson, and the vows were spoken before an improvised altar decorated with cherry blossoms and candles. Prior to the ceremony, Miss Sallie Joyner Davis lighted the candles, thereby making the altar one of enchanting beauty.

Immediately preceding the ceremony, Miss Davis escorted Prof. Austin, followed by Mr. Adams, to the piano where Mr. Austin rendered some musical selections and Mr. Adams sang "Just Before the Battle Mother."

Mr. Austin wore a unique costume and Mr. Adams was attired in a pink-beaded evening gown, black hat and gray squirrel chocker.

At the strains of the wedding march the flower girls, R. J. Slay and Prof. R. C. Deal, entered carrying large laundry baskets of pink and blue rose petals which they scattered in the paths of the bride and groom. Dr. Slay was dressed in a dainty white dress with much lace and yellow accessories, including hair ribbon and gold slippers. Prof. Deal was charming in a blue basque dress with pink accessories. Mr. James A. Keech, principal of the Greenville High School, was the ring bearer. He was most elaborately dressed in a clown suit of blue and black, and carried the ring on an E. C. T. C. pillow, supported by a tray.

The next to enter was Mr. M. L. Wright, mother of the bride, attended by Miss Davis and wore a navy suit, black hat and sky-blue scarf, and wore a corsage of pink and white roses.

The bride entered with and was given in marriage by her father, Prof. Hubert C. Haynes. The groom entered unattended, due to the fact that his best man, Pres. Robert H. Wright, had another engagement.

The bride wore a lovely white linen dress. She wore a long white veil caught with cherry blossoms and carried an arm bouquet of pink and lavender roses. Her only ornament was a necklace of brown beads, perhaps the gift of the groom.

The wedding scene was of rare interest and was attended by a large assemblage of students and relatives of the professors.

—LESSIE COGDELL, '26.

JOKES

Our idea of a modern dumb bell is the Freshman who, when told to observe study hour, sat on the back campus for an hour and watched the Sophs in the dormitory study.

HARRY JOHNSON (copying "D" write-ups): "If this typewriter had any sense at all it would have been love sick by now."

A Father to His Modern Daughter: "Where are you going, my little maid?"
"I'm going a-petting, sir," she said.

The exams are done,
And a darkness falls on my soul by right,
For I feel myself wafted homeward
By the Advisory Board e'er night.

EVELYN HUTCHINSON: "Mary, I saw you with a gentleman in a car last night, and I only saw one of his arms. Did he have only one?"
MARY CUMMINGS: "The other was around somewhere, I guess!"

Absent-minded math teacher after she had given the clerk her order: "Now, if you understand that, raise your hand."

MR. FRANK TO MR. HAYNES: "I read in the paper the other day that it is going to be the style for men to wear suits the color of their hair."
MR. HAYNES: "Gee, I'm out of luck."

INEZ VAN DYKE (business manager of THE TECOAN): "Mr. Marcus, may I come to see you next week?"
MR. MARCUS: "Sorry, but I will be on my honeymoon next week."

KATHLEEN DALL (slightly mixed): "This morning I found a dime going to church."
FRIEND (innocently): "Did you stop it?"

MUSETTE (to Rachel Lee, who was singing as she passed the window): "Don't sing by my window."
RACHEL (pertly): "I'm not singing 'By My Window.' I'm singing 'Yearning'."

"LINES"

(Composed After Breaking a Rare Vase)

Vainly I had sought to borrow
 From my books surcease of sorrow—
 Sorrow for the broken vase
 For the rare and antique vase which
 I had broke upon the floor,
 Useless here for evermore.

Presently my soul grew stronger;
 Hesitating then no longer,
 "Dear," said I, "or Nancye, truly your
 Forgiveness I implore,
 But the fact is I was leaning, and so
 Gently it was tipping,
 And so faintly it came slipping,
 Slipping while my sweater tore,
 That I scarce was sure I felt it"—then
 I looked upon the floor—
 Pieces there and nothing more.

Then, methought, the air grew tenser,
 Perfumed from an unseen censer,
 Swung by tears whose foot-falls
 Tinkled on the hard, old floor.
 "Wretch," I cried, "my pocketbook be
 Empty, but my roommate she hath lent me
 Dimes, dimes to turn thee from
 The memories of antiques!
 Take, oh take this little dime and
 Forget that lost antique!
 Please, oh please, for evermore."

THE PSALM OF THE PRACTICE TEACHER

Practice teaching is my fate,
 I shall not desire more.
 It maketh me to sit up late at nights.
 It leadeth me into deep thought,
 It tormenteth me.
 It leadeth me into paths of worry for its name sake.
 Yea, tho I ride out to Winterville, I am sat upon.
 I thinketh great evil when I writeth plans.
 Its "ups and downs" tortureth me,
 It maketh me to say naughty words in the presence of my friends.
 It annointeth my face with tears.
 My eyes runneth over.
 Surely to goodness if this fate followeth me all the days of my life I shall
 dwell at "Dick's Hill" forever.



Love Me?



All Aboard!



Off for a Ride

19



A Bird's-Eye View

26



-PALS-



JANIE



HAPPY ~ THO MARRIED

COLLEGE SNAPSHOTS

1926



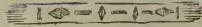
Below Zero



"Bruze"



When Skies
Are Blue



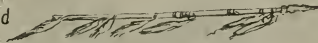
Ferdinand



A Favorite "HANG-OUT"
(Denton's College Store)



Peter



A Tramp?



"Sissy" Dail
Little V.P.



'Posed'

COLLEGE SNAPSHOTS

1926



While She Waits



Mr. Boyd



ON A HIKE



Just Here



TWO IS COMPANY
FIVE IS ---?



Public
Courtship



Miss Culp



Mr. WAYNE



A RARE Sport
-Here-

COLLEGE SNAPSHOTS

1926



"Charlestoning"



Lucille Sermons
Ruth Rhine



"Zip" and "Jack"



A Popular Sailor



"Heck" ?



"Snowbirds"



SEN →

← IORS



Colonial Dames



Evelyn + Nancye



Reserved Seats

COLLEGE SNAPSHOTS



PATRONIZE OUR
ADVERTISERS

FOR
COLLEGE STATIONERY
SCHOOL SUPPLIES
TOILET ARTICLES
AND
GUARANTEED SATISFACTION

Try "Us" First



Denton's College Store

"The College Girls' Store"

PHONE 80

CHAS. O. H. HORNE

Druggist



CLEANEST STORE IN
GREENVILLE INVITES
YOUR PATRONAGE



PHONE 50

*Opposite Proctor
Hotel*

GREENVILLE'S

Authority on Ladies' Wear

*Ladies' Tailor-Made
Suits a Specialty*

All the newest styles in Dress
Goods, Silks, Embroideries,
Laces and Dress Trimmings.
My shoe stock is complete
in every line for Men,
Ladies and Children

I want your patronage
You will profit by trading
with me

W. A. BOWEN'S STORE

Phone 330

GREENVILLE, N. C.

THE ROUSE PRINTERY

Quality Printing



*Fine Stationery
Prices Reasonable*



GREENVILLE, N. C.

New Blonde and Grey
Slippers to Glorify
Your Appearance
This Spring
and Summer

At the CAROLINA SHOE STORE
you are quite certain to find at all
times just the shoe that harmonizes
with the rest of your costume.
The ensemble idea is to be more
popular this Spring and Summer
than ever before which makes it
important that you have footwear
to accompany each outfit. An in-
teresting assortment of pumps and
strapped styles will make choosing
a pleasure.

10 per Cent. Discount to All
E. C. T. C. Students

CAROLINA SHOE STORE

**McKAY WASHINGTON
COMPANY**

"The Ladies' Store"

Ever Showing the Latest
Apparel for Ladies

**SUITS, COATS AND
DRESSES**

AGENTS FOR

Warner Corsets
Red Fern Corsets
Dove Undermuslin
Phoenix Hose

**WE GUARANTEE
THESE ITEMS**

GREENVILLE, N. C.

*Ladies Ready-to-Wear
and Millinery*

**WE SHOW THE NEW
THINGS FIRST**



C. HEBER FORBES

GREENVILLE, N. C.

Peoples Bakery



**DIENERS PEANUT
BRITTLE**

CREAM PUFFS

ALL KINDS OF PASTRIES

PHONE 129

GREENVILLE, N. C.

The Proctor Hotel



**Caters Especially to College
Students and Their Families**

**Call us at 393 for any service
we may be able to render at
any time**

W. DAVID TURNER

Manager

GREENVILLE, N. C.

J.C. Penney Co.
A NATION-WIDE
INSTITUTION-
INC.
DEPARTMENT STORES

Superior Values Always Here!

We don't believe in spasmodic "sales," but we do believe in giving the most in value for each dollar you spend here. And we believe in doing this every day in the year.

BLOUNT-HARVEY COMPANY, INC.

Greenville Style Center for Wearing Apparel

Women who depend upon this store for their wearing apparel know that styles are correct; that old stocks never accumulate here; that we show greatest variety of fabrics, many of which are exclusively our own; that everything is of guaranteed quality; that they get a full dollar's worth for every dollar. We want more women to know these truths.

**WE MAKE SPECIAL EFFORT TO PLEASE
COLLEGE GIRLS**

BLOUNT-HARVEY COMPANY, INC.

The Shopping Center

J. G. LAUTARES

Candy Palace

THE EVERY DAY DESSERT



Our pure Ice Cream, and Home-Made Candy are more than a dessert. Their food value exceeds that of most table foods. A dish of our Ice Cream has the same food value as a pound of steak or four pounds of potatoes. We leave it to any member of the household to say which is the most appetizing. Lautares Ice Cream has passed the State Food Inspection at Raleigh, and has proved to be a pure cream—and a rich cream. Our Ice Cream Plant has been installed by the Southern Construction and Supply Company, Atlanta, Ga., and is the best and most up-to-date in the State.

□+□

Try Our Ice Cream in Your Home

□+□

BE SURE TO ASK FOR

LAUTARES ICE CREAM

WHOLESALE AND RETAIL

B. S. WARREN

The Leading Druggist

GREENVILLE, N. C.



*The Old Reliable
Store*



Call Us for Anything a Drug
Store Sells

PHONE 68

THE PRICE OF A

GOOD PHOTOGRAPH

Is not the money you exchange for it, but the Personal Happiness and Mental Satisfaction—and yet you find our prices most reasonable.



BAKER'S STUDIO

Sit to Us for Your Portraits

PITT SHOE COMPANY



Shoes Exclusively



FIVE POINTS



We Keep Your Feet Happy

H. W. PETERS
COMPANY

*Manufacturing
Jewelers*



CLASS RINGS, SOCIETY
EMBLEMS AND INVITATIONS



District Office
321½ West Main Street
DURHAM, N. C.



J. H. MILLER
District Manager

Put Your Experience of YESTERDAY Into
TODAY
And It Will Pay You a Reward TOMORROW

PROFIT BY OBSERVATION

Look around you and you will see on every side examples of men
who, during their working years, spent their income
regardless of the future

Prepare now so that in your declining years you will have peace
and plenty

EXPERIENCE IS KNOWLEDGE GAINED BY TRIAL AND PRACTICE
OPEN A BANK ACCOUNT—DO IT TODAY

THE GREENVILLE BANKING AND TRUST COMPANY
Resources Over \$1,500,000.00

GREENVILLE MARKET
COMPANY

WHOLESALE AND RETAIL



FRESH MEATS
OYSTERS AND FISH



We Appreciate Your Patronage

Phone 82

STATIONERY
OFFICE SUPPLIES



RENFREW PRINTING
COMPANY

PRINTERS AND STATIONERS



We have all kinds of stationery
and supplies for College Girls

EVANS STREET

Opposite Proctor Hotel

YOUNG'S

*For the Newest Styles
or Evening Dresses*

SPECIALY PRICED

We always get the newest
novelties in

OXFORDS AND PUMPS FIRST

Our silk hosiery is the best ob-
tainable, Extra good heavy silk
hose, triple seam, full fashioned

ALL COLORS, \$1.49

CORNER DICKERSON AVENUE
AND GREENE STREET

THIS SPACE IS

COMPLIMENTARY TO

WHITE'S THEATRE

FOR A

Picture given in behalf of

THE 1926 TECOAN

NATIONAL BANK OF GREENVILLE

GREENVILLE, N. C.

The Big Bank on Five Points

Resources \$1,644,098.00

90%

This is the high average, yet 90% of the business of this country is
done by check

We want you to join the majority by opening an account with
this bank

JAMES L. LITTLE, President
F. G. JAMES, Vice-President

F. J. FORBES, Cashier
CHAS. JAMES, Asst. Cashier

East Carolina Teachers College

GREENVILLE, N. C.

COURSES OFFERED

I. A Two-Year Normal Course

II. A Four-Year College Course

The two-year normal course leads to a diploma which entitles the holder to a Primary or Grammar Grade Certificate, Class B. The four-year college course leads to the A. B. degree which entitles the holder to a Primary, Grammar Grade, or High School Teacher's Certificate, Class A. All work given in these courses will count toward graduation from this institution.

Special courses are offered with the purpose of preparing High School Teachers of English, History, Science, Biology, Mathematics, Geography, Latin, French, and Home Economics.

Beginning with the fall term of 1927 the college will offer a course for Elementary school principals and supervisors.

FOR FURTHER INFORMATION, ADDRESS

ROBERT H. WRIGHT

President

Equipped with many years experience for making photographs of all sorts, desirable for illustrating college annuals. Best obtainable artists, workmanship and the capacity for prompt and unequalled service.

White
STUDIO

Photographers to
1926 TECOAN

220 WEST 42nd STREET, NEW YORK

*A Good, Accurate Watch is Absolutely Essential
When You Start Teaching*

Hamilton - Elgin

Bulova - Optima



Our Prices

\$12.50 to

\$100.00

Investigate Our "Divided Payment" Plan for College Girls

WE ALWAYS KEEP AN EXPERT WATCH-MAKER

Traub Genuine "Orange Blossom" Wedding Rings and Mountings

If Interested, Write for Brochure "Wedding Ring Sentiment"

We are as Near as Your Post Office: Make Wants Known

W. L. BEST

"LARGEST JEWELER IN PITT COUNTY"

Wilkerson & Williams

UNDERTAKING AND
MUSIC COMPANY



FUNERAL DIRECTORS
AND EMBALMERS



PIANOS AND PLAYER PIANOS
VICTROLAS AND RECORDS
PICTURE FRAMES AND
NOVELTIES

GREENVILLE, N. C.

**JOHN FLANAGAN
BUGGY COMPANY**



AUTHORIZED FORD
DEALERS



SALES AND SERVICE

GREENVILLE, N. C.



CASH OR CREDIT

JUST EVERYTHING
DRUG STORES SELL



OUR MOTTO

Service and Quality



GREENVILLE DRUG Co.

J. KEY BROWN
Druggist

FIVE POINTS

How Do You Stand?

Are the soles of your feet comfortable? and your heels? Do you feel on the level, or wobbly? If the latter, maybe your shoes are at fault. Better bring them to us and let us give you a better understanding. We do all kinds of shoe repairing, in a thorough manner, at fair prices.

**GOODYEAR SHOE
REPAIRING Co.**

GREENVILLE, N. C.

Greenville Floral Co.

"Say It With Flowers"

Wedding Bouquets, Corsages
Funeral Designs

Largest Growers of Cut Flowers in
Eastern Carolina

PHONE 443-W

PHONE 437

DR. M. B. MASSEY
DENTIST

◆◆◆

200-202 National Bank Building

◆◆◆

GREENVILLE, N. C.

WILLARD'S
Fancy Groceries

◆◆◆

Food of Superior Excellence

23—PHONES—92

GREENVILLE, N. C.

MRS. R. W. FLEMING
Hemstitching

◆◆◆

P. O. BOX 418 PHONE 136

EVANS STREET

GREENVILLE, N. C.

LOWE'S

◆◆◆

Millinery and Van Raalte Hose

◆◆◆

GREENVILLE, N. C.

CHIC

Naturalness and Correctness are
the Characteristics of

A VANITY BOXE
NEW NESTLE CIRCULINE
PERMANENT WAVE

Make Your Application Now

THE VANITY BOXE

DR. B. MCK. JOHNSON
DENTIST

◆◆◆

National Bank Building

Phone 391

GREENVILLE, N. C.

MISSES MANNING
SPECIALTY SHOP

Ladies' Ready-to-Wear
and Millinery

GREENVILLE, N. C.

MRS. ANNIE PITTMAN

Hemstitching, Button Covering
and Pleating

PHONE 218

EVANS STREET

GREENVILLE, N. C.

Dr. Alfred M. Schultz

DENTIST

◆◆◆

100 National Bank Building

GREENVILLE, N. C.

DR. R. F. WILLIAMS

DENTIST

◆◆◆

302 National Bank Building

PHONE 413

GREENVILLE, N. C.

L. O. GROSS

◆◆◆

PIANO TUNING AND
REPAIRING

◆◆◆

GREENVILLE, N. C.

It is a fact, that you can get
better furniture at a better
price and better terms at

TAFT & VANDYKE

GREENVILLE, N. C.

6%—Money to Loan—6%

**THE HOOD SYSTEM
INDUSTRIAL BANK**

GREENVILLE, N. C.

Pay Back Weekly or Monthly

**ELECTRIC SERVICE AND
SUPPLY COMPANY**

ANYTHING ELECTRICAL

RADIOS

We Appreciate Your Business

PHONE 605

DICKERSON AVENUE

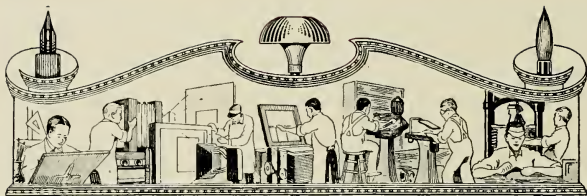
A. G. WALTERS

JEWELER AND OPTICIAN

"Everything in First-Class
Jewelry"

SEE OUR LINE

GREENVILLE, N. C.



In the planning and production of this Annual it has been a pleasure to work with the Class of 1925-26. We believe that we have been of real service to you, and we appreciate the opportunity. We also believe that our mutual efforts to produce a worthy Annual have not been in vain.

As you go out into Life we can but wish for your success and happiness. Your successors of 1926-27 will find us equally able and willing to share their problems as they take up your work. We hope to know them as well as we have known you. We welcome all inquiries and we are always ready to serve.

BIERMAN ENGRAVING CO.

DESIGNERS RETOUCHERS HALFTONES ZINC ETCHINGS
ILLUSTRATORS SHADING TINTS COLOR PLATES EMBOSsing DIES

COR. CHURCH AND 4TH ST. CHARLOTTE, N. C.
TELEPHONE 1203

College and High School
ANNUALS



We invite your meticulous scrutiny of this Annual as to typography, press-work, binding, and all the elements that enter into the publishing of a year-book.

Our organization is made up of men who are experts in the handling of College and High School Annuals—our equipment is second to none in the State—and these two, combined with exceptional business service, assure our patrons of entire satisfaction.

Correspondence Invited

The Observer Printing House

INCORPORATED

CHARLOTTE, N. C.

The cover for
this annual
was created by
The DAVID J.
MOLLOY CO.
2857 N. Western Avenue
Chicago, Illinois

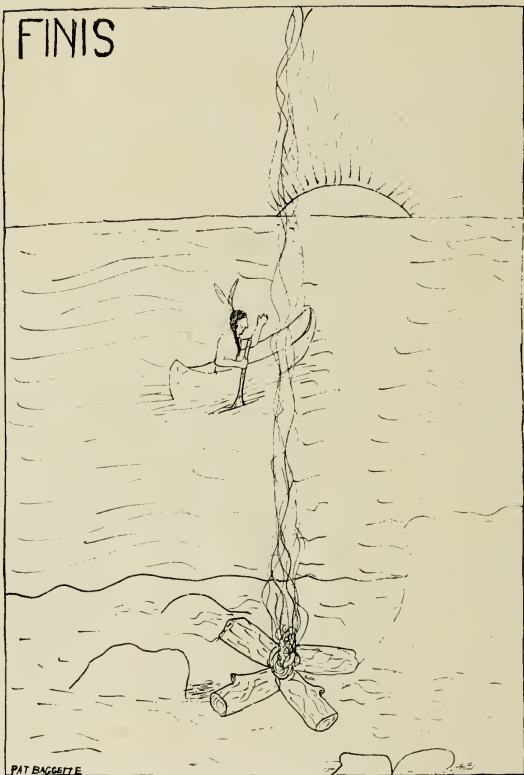


Every Molloy Made
Cover bears this
trade mark on the
back lid.

AUTOGRAPHS

1.
2.
3.
4.
5.
6.
7.
8.
9.
10.
11.
12.
13.
14.
15.

FINIS



PAT BAGGETT

the 1990s, the number of people with a mental health problem has increased in the UK (Mental Health Act 1983).

There is a need to understand the experience of people with mental health problems, and to explore the ways in which they are affected by their condition. This paper reports on a study of the experience of people with mental health problems, and the ways in which they are affected by their condition.

Methodology

Design

The study was a qualitative study, using a phenomenological approach to explore the experience of people with mental health problems.

The study was a phenomenological study, using a phenomenological approach to explore the experience of people with mental health problems.

The study was a phenomenological study, using a phenomenological approach to explore the experience of people with mental health problems.

The study was a phenomenological study, using a phenomenological approach to explore the experience of people with mental health problems.

The study was a phenomenological study, using a phenomenological approach to explore the experience of people with mental health problems.

The study was a phenomenological study, using a phenomenological approach to explore the experience of people with mental health problems.

The study was a phenomenological study, using a phenomenological approach to explore the experience of people with mental health problems.

The study was a phenomenological study, using a phenomenological approach to explore the experience of people with mental health problems.

The study was a phenomenological study, using a phenomenological approach to explore the experience of people with mental health problems.

The study was a phenomenological study, using a phenomenological approach to explore the experience of people with mental health problems.

The study was a phenomenological study, using a phenomenological approach to explore the experience of people with mental health problems.

The study was a phenomenological study, using a phenomenological approach to explore the experience of people with mental health problems.

The study was a phenomenological study, using a phenomenological approach to explore the experience of people with mental health problems.

The study was a phenomenological study, using a phenomenological approach to explore the experience of people with mental health problems.

The study was a phenomenological study, using a phenomenological approach to explore the experience of people with mental health problems.

The study was a phenomenological study, using a phenomenological approach to explore the experience of people with mental health problems.

The study was a phenomenological study, using a phenomenological approach to explore the experience of people with mental health problems.

The study was a phenomenological study, using a phenomenological approach to explore the experience of people with mental health problems.

The study was a phenomenological study, using a phenomenological approach to explore the experience of people with mental health problems.

The study was a phenomenological study, using a phenomenological approach to explore the experience of people with mental health problems.

The study was a phenomenological study, using a phenomenological approach to explore the experience of people with mental health problems.

The study was a phenomenological study, using a phenomenological approach to explore the experience of people with mental health problems.

JOYNER



30372 0103 3197 0



LEHCO

