

INDEX

Buckeye Roofing,.....	Page 5
Beaded Ceiling,.....	" 11
Ceiling, (beaded),.....	" 11
Corrugated Roofing,.....	" 8
" Siding,.....	" 8
" Ceiling,.....	" 8
Capping, Ridge,.....	" 9
Curved Corrugated,.....	" 9
Crimped Edge, V Crimped,.....	" 7
Iron Shingles,.....	" 10
"New Style" Roofing,.....	" 3
"Outside Clear" Roofing,.....	" 6
Old Style, V Crimped,.....	" 7
Paint,.....	" 11
Paper Felt Lining,.....	" 11
"Roll and Cap" Roofing,.....	" 4
Tin Shingles,.....	" 10
Weatherboards,.....	" 11

NOTES.

When quotations are made, **PAINTED IRON** is always understood, unless otherwise specified.

All our quotations are made by **THE SQUARE**, (100 sq. feet): under each kind of Iron, find specification of a square.

When not otherwise specified, all quotations are understood to be for Sheets of **STANDARD ROOFING GAUGE**, weighing about 75 lbs. to the square.

Heavier Gauges quoted, when requested.

PITCH REQUIRED.

Our Different Varieties of Iron are suited for roofs of the Following Pitch:

"New Style," 1 1/2 in. or more to the ft.	"Roll and Cap," 3/4 in. or more to the ft.
"Buckeye," 3/4 "	"Old Style," 1 1/2 "
"Corrugated," 2 1/2 in. or more to the ft.	

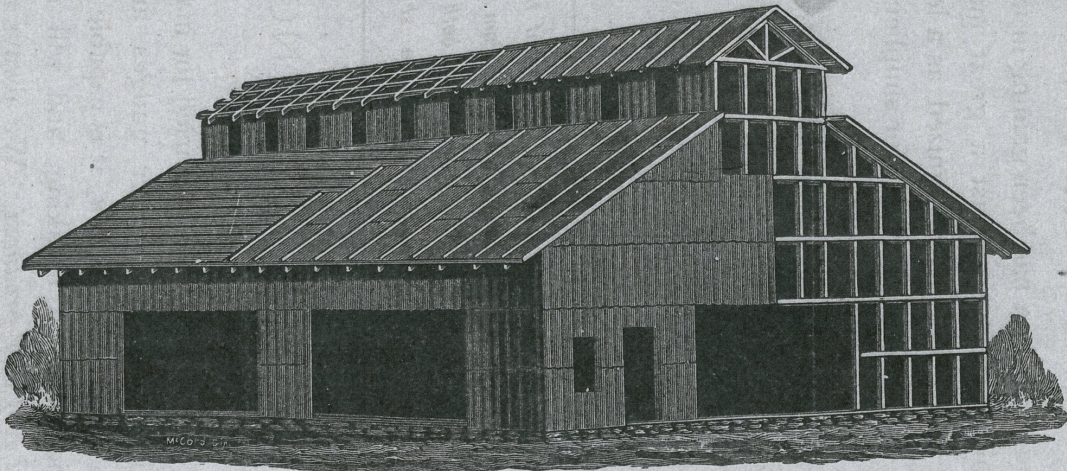
FULL DIRECTIONS and INSTRUCTIONS FOR LAYING sent when requested.

GALVANIZED IRON, quoted on application.

CRIMPED AND CORRUGATED

IRON & STEEL ROOFING,

SIDING, CEILING, METAL SHINGLES, WEATHERBOARDS.



FOR SAW MILLS, STORES, RAILROAD
DEPOTS, SHOPS, &c.

FACTORIES, DWELLINGS, &c.
STIMMILL'S, SHEPHERD'S, NOLTON'S FOR

FIRE-PROOF! WATER-PROOF! WIND-PROOF! RUST-PROOF!

MANUFACTURED BY
W. G. HYNDMAN & CO.

Send for Prices.

Nos. 52 and 54 East Second Street, CINCINNATI, OHIO.

IRON ROOFING.

For some years iron has been gaining in favor as a roofing material, winning its way against a great many competitive articles, until it has become recognized as a legitimate article of trade, and attained a reputation for simplicity and durability equal to any other roofing material.

To meet the varied purposes for which iron is used, we have put upon the market, a large variety of shapes, some suited for steep pitched roofs, others for very flat roofs; some adapted for siding and ceilings, others being only suitable for roofing.

All of our Irons are made from box annealed sheets, of the very best quality suitable for the purpose; the sheets are free from scales, holes or splits. All our irons are well painted on both sides with the very best Metallic Paint before shipping.

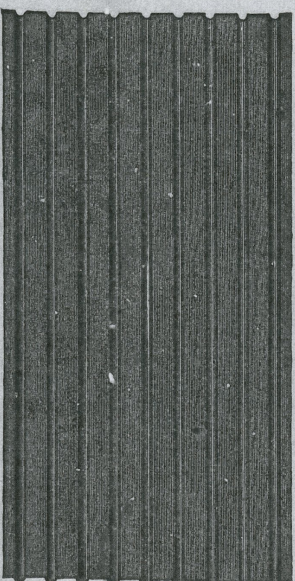
STEEL ROOFING.

Steel is the purest metal ever used for making sheet roofing, especially where the lighter gauges are used; while costing *very little more than iron*, it is capable of being bent in every direction without breaking, and will make the most *durable metal roof ever produced*. We always advise the use of steel roofing, where parties want a roof to last forever. All our steel sheets are well painted on both sides with the very best metallic paint.

BEADED CEILING.

—1 OR SIDING. 1—

Sheets well painted on both sides with best Metallic Paint.

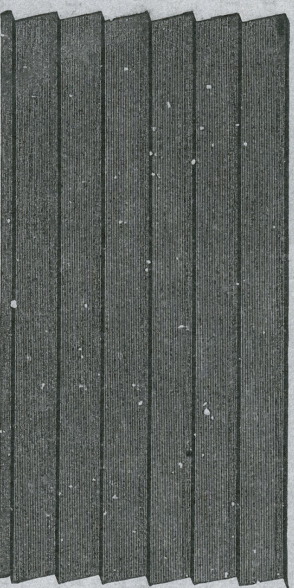


SHEETS.
Regular Length
8 feet.
Special Lengths,
from 4 to 10 feet.
Covering Width,
24 inches.

A SQUARE—Consists of $6\frac{1}{4}$ sheets 8 ft. long, or 50 lineal ft. of other lengths.

WEATHER BOARDS.

Sheet well painted on both sides with best Metallic Paint.



SHEETS
8 feet long, and
cover two feet
wide.

A SQUARE—Consists of $6\frac{1}{4}$ sheets 8 ft. long, or 50 lineal ft. of other lengths.

PAPER FELT.

When Roofs are subject to the attack of evaporating steam, or other gases it is advisable to cover the roof with dry Paper Felt before putting on the iron. Prices of different Feltings furnished on application.

PAINT.

It is advisable to repaint all our roofings, just as soon as they are laid. There being so many inferior paints on the market, we have made arrangements to furnish our customers with the *very best Roofing Paint* made, in small or large packages.